

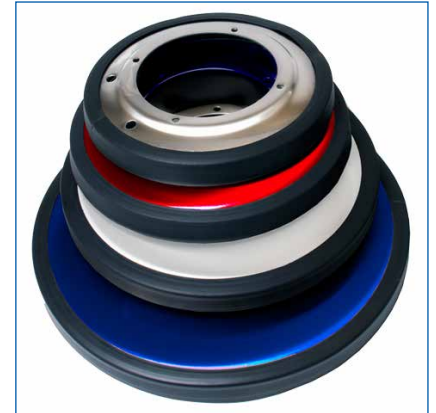
50 Ft. Heavy Duty Cord with Durable spring steel strain relief

Dual metal switch levers, left or right hand operation

13", 15", 17" & 20" heads available, interchangeable, color options available

5 YEAR WARRANTY

Tough All steel and stainless steel construction



98 lbs - Optimum weight delivers more resistance against the floor to get the job done better and faster

Extremely durable & convenient handle adjustment mechanism is foot operated.

Dual Capacitors

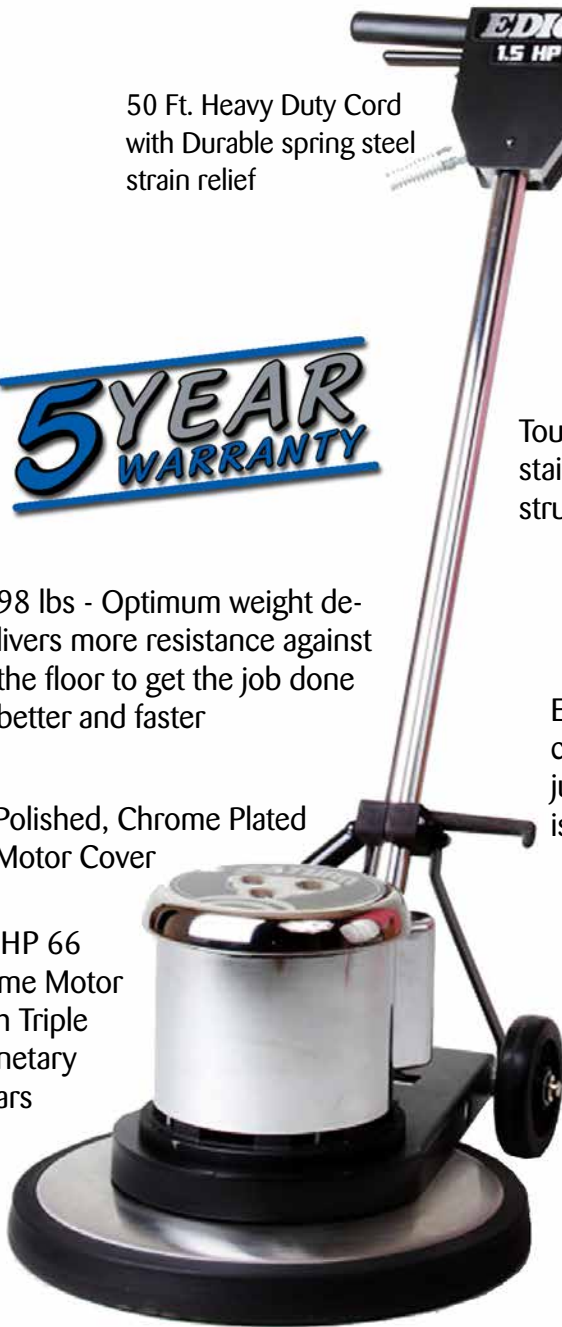
Polished, Chrome Plated Motor Cover



1.5HP 66 Frame Motor with Triple Planetary Gears

5" non-marking wheels

Optional 4 gallon shampoo tank



Non-marking PVC bumper prevents marking furniture or walls



PAD Driver

Optional Brushes - See Table on Reverse for Part #s



SATURN

LOW SPEED FLOOR MACHINES

Specifications:

13LS3-BK**	15LS3-SS* or 15LS3-BK**	17LS3-SS* or 17LS3-BK**	20LS3-SS* or 20LS3-BK**
13" Head	15" Head	17" Head	20" Head
175 RPM	175 RPM	175 RPM	175 RPM
1.5 HP 66 frame Motor	1.5 HP 66 frame Motor	1.5 HP 66 frame Motor	1.5 HP 66 frame Motor
Triple planetary steel gears	Triple planetary steel gears	Triple planetary steel gears	Triple planetary steel gears
91 lbs.	93 lbs.	95 lbs.	98 lbs.
Black Powder Coated Brush Cover	Stainless Steel or Black Powder Coated Brush Cover	Stainless Steel or Black Powder Coated Brush Cover	Stainless Steel or Black Powder Coated Brush Cover
Shipping Weight: 101 lbs.	Shipping Weight: 106 lbs.	Shipping Weight: 112 lbs.	Shipping Weight: 115 lbs.
Anti-fatigue Handle Grips	Anti-fatigue Handle Grips	Anti-fatigue Handle Grips	Anti-fatigue Handle Grips
50' Power Cord	50' Power Cord	50' Power Cord	50' Power Cord
6.8 Amps	6.8 Amps	6.8 Amps	6.8 Amps
Shipping dimensions: 48"H x 26.5"L x 23"W	Shipping dimensions: 48"H x 26.5"L x 23"W	Shipping dimensions: 48"H x 26.5"L x 23"W	Shipping dimensions: 48"H x 26.5"L x 23"W
5 Year Warranty	5 Year Warranty	5 Year Warranty	5 Year Warranty

* SS notes stainless steel brush cover

** BK notes black powder coated brush cover



Detachable power cord at the motor for easy service and maintenance



Optional Pad Drivers and Brushes:

Model#	Description – 17" Floor Machines
1601BR	16" Pad Driver with Molded-In Clutch Plate, For 17" Machine
1603BR	16" Pad Driver, For 17" Machine
1505BR	Nylon Carpet Brush, 15" Block, For 17" Machine
1506BR	Poly Carpet Brush, 15" Block, For 17" Machine
1507BR	Grit Brush, 15" Block, For 17" Machine, 46 Grit
1507BR-1	Grit Brush, 15" Block, For 17" Machine, 80 Grit
1507BR-2	Grit Brush, 15" Block, For 17" Machine, 180 Grit
1507BR-3	Grit Brush, 15" Block, For 17" Machine, 500 Grit
Model#	Description – 20" Floor Machines
1901BR	19" Pad Driver with Molded-In Clutch Plate, For 20" Machine
1903BR	19" Pad Driver, For 20" Machine
1805BR	Nylon Carpet Brush, 18" Block, For 20" Machine
1806BR	Poly Carpet Brush, 18" Block, For 20" Machine
1807BR	Grit Brush, 18" Block, For 20" Machine, 46 Grit
1807BR-1	Grit Brush, 18" Block, For 20" Machine, 80 Grit
1807BR-2	Grit Brush, 18" Block, For 20" Machine, 180 Grit
1807BR-3	Grit Brush, 18" Block, For 20" Machine, 500 Grit

Questions? Contact Us: 800.338.3342 • edic-usa.com