



## Electronic Service Manuals

This electronic document is provided as a service to our customers. We do not create the contents of the information contained in this document. Should you have detailed questions pertaining to the information contained in this document, you may contact Michco, or the manufacturer which provided the original information in this electronic deliverable. Michco's only part in this electronic deliverable was the electronic assembly process. By providing this manual on line we are not guaranteeing parts availability.

You may contact Michco through the following methods:

Phone (517) 484-9312 or (800) 331-3339

2011 N. High St. -- Lansing, Michigan -- 48906

Fax: (517) 484-9836

Email: [CustServe@Michco.com](mailto:CustServe@Michco.com)

Web site: [www.Michco.Com](http://www.Michco.Com)

Parts Web site: [www.FloorMachineParts.Com](http://www.FloorMachineParts.Com)

Order Parts on Line at:

**[www.FloorMachineParts.Com](http://www.FloorMachineParts.Com)**

Directly to Parts & Service:

By Email: **[Shop@Michco.com](mailto:Shop@Michco.com)**

By Fax: (517) 702-2041

By Voice: Use numbers above.

**Serving the Cleaning Industry Since 1922**

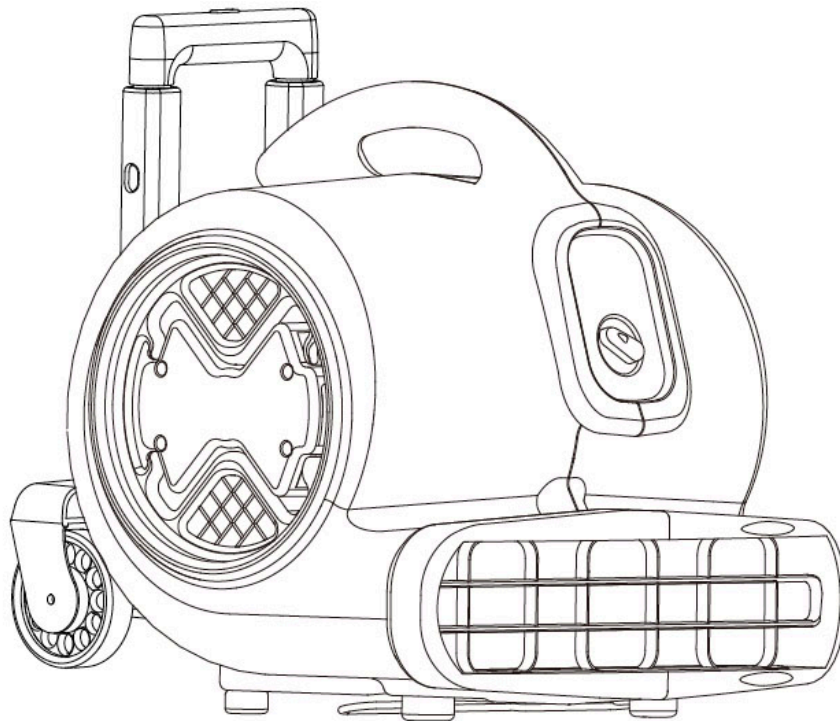
Notice: All copyrighted material remains property of original owners, all trademarks are property of respective owners. Manuals are subject to Manufacturer's reproduction limitations. Originals or reproductions were provided by manufacturers through a request. We make no warranty as to the correctness of information provided in this document and you assume all risk. By placing these manuals on line we are not declaring our corporation to be an manufacturer authorized dealer or provider, please check our web site for authorized manufacturers we represent.

3 – SPEED AIR MOVER

# OWNERS MANUAL

IMPORTANT: READ OWNERS MANUAL CAREFULLY

Please fill out and return your warranty card!



MODEL # RACER / TPRACER

REV 01 (1-13)

## **TABLE OF CONTENTS**

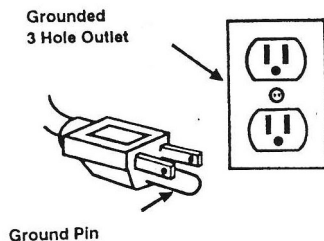
<b>Safety Precautions</b>	<b>3</b>
<b>Machine Operation / Daisy Chain</b>	<b>4</b>
<b>Maintenance / Storage</b>	<b>5</b>
<b>Parts List</b>	<b>6-7</b>
<b>Wiring Diagram</b>	<b>8</b>

## **SAFETY PRECAUTIONS**

### **GROUNDING INSTRUCTIONS**

General – This air mover shall be grounded while in use to protect the operator from electrical shock. The machine is provided with a three – conductor cord and a three – contact grounding type attachment plug to fit the proper grounding type receptacle. The green (or green & yellow) conductor in the cord is the grounding wire. Never connect this wire to anything other than the grounding pin of the attachment plug.

This machine is for use on a nominal 120 – volt circuit and has a grounding plug that resembles the plug illustrated in the figure below. Make sure that the machine is connected to an outlet having the same configuration as the plug. No adapter should be used with this machine.



(120V)

This machine is intended for commercial use only. It is constructed for use in an indoor environment and is not intended for any other use.

All operators shall read, understand and exercise the following safety precautions:

- 1) Do not operate machine:
  - Unless trained and authorized.
  - Unless you have read and understand the operators manual.
  - In flammable or explosive areas.
  - With a damaged cord or plug.
  - If not in proper operating condition.
  - In outdoor areas.
  - In standing water.
  - With the use of extension cords.
- 2) Before operating machine:
  - Make sure all safety devices are in place and operate properly.
- 3) When using machine:
  - Do not pull machine by cord or plug.
  - Do not pull cord around sharp edges or corners.
  - Do not unplug machine by pulling on the cord.
  - Do not stretch cord.
  - Do not handle plug with wet hands.
  - Keep cord away from heated surfaces.
  - Report machine damage or faulty operation immediately.
- 4) Before leaving or servicing machine:
  - Turn off machine.
  - Unplug cord from outlet.
- 5) When servicing machine:
  - An experienced technician should only perform service work.
  - Unplug cord from outlet.
  - Use manufacturer supplied or approved replacement parts.

## **BASIC OPERATION**

- 1) Check the machine for any obstructions in fan prior to operation.
  - If an item blocks the intakes of the air mover, this will hurt the performance of the machine, and could cause the motor to overheat.
- 2) Adjust machine to desired position for operation by pulling it back to its preset height adjustments.
- 3) Plug power cord into a grounded outlet.
  - **Do not use an extension cord in conjunction with the standard power cord.**
- 4) This machine has 3 power settings. Turn the power knob to the desired speed.
  - Low = 1      Med = 2      High = 3.
- 5) To stop the machine at any time, simply turn the power knob to the “off” position.
  - **Never stick any object into the air inlet vents or the air outlet vent.**

## **DAISY CHAIN**

The RACER / TPRACER can be connected in a “Daisy Chain” allowing for two (2) additional RACER / TPRACER units to work together on one circuit.

- **Only use RACER or TPRACER units together in the daisy chain.**



Note:  
Air Mover has an on-board circuit breaker. If the auxiliary outlet overloads, the circuit breaker will trip. If the breaker trips, unplug the units and press the circuit breaker reset button. Plug the units back into the power source and turn on the switch.

## MAINTENANCE

To keep this machine performing well for many years, please follow the following maintenance procedures:

- **Always confirm the machine is unplugged from the power source prior to performing any maintenance or repairs!**
- 1) Unplug machine as soon as you are done using it.
  - 2) Wrap the power cord around the carrying handle.
  - 3) Check power cord for any damage. If any damage is detected, replace the cord immediately.
  - 4) Lubricate the handle assembly and wheels with a water resistant lubricant every month.
  - 5) Check machine for loose or missing nuts and bolts, and replace as necessary.
  - 6) Clean the outside of the machine with a mild cleaner.

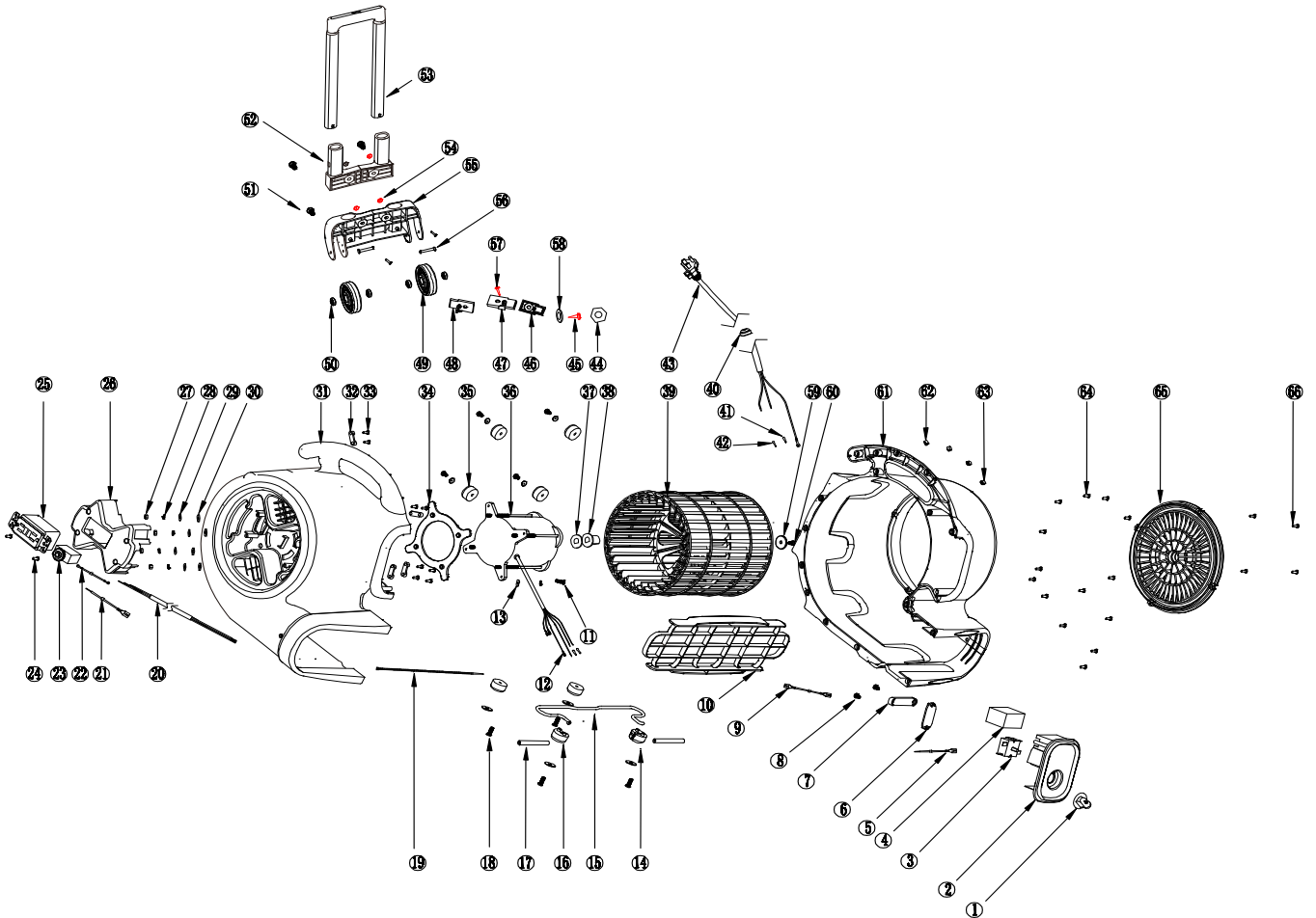


### **AIR MOVER STORAGE:**

Air Movers can be stacked (up to 4) on their sides for storage.

**NOTICE:**  
1. Stacking feature is not secure for transportation.  
2. Remove the filters before stacking.

# PARTS BREAKDOWN



## PARTS BREAKDOWN

<b>BASE ASSEMBLY - RACER / TPRACER</b>							
DIA NO	PART NUMBER	DESCRIPTION	NO REQ'D	DIA NO	PART NUMBER	DESCRIPTION	NO REQ'D
1	XP600-001	KNOB, ON / OFF	1	34	XP600-034	PLATE, HEAT INSULATION	1
2	XP600-002	SWITCH PLATE	1	35	XP600-035	RUBBER FEET (SET OF 6 PCS)	1
3	XP600-003	SWITCH ASSEMBLY	1	36	XP600-036	MOTOR	1
4	XP600-004	CAPACITOR	1	37	XP600-037	WASHER, D-SHAPED	1
5	XP600-005	MALE, LEAD (SWITCH)	1	38	XP600-038	BUSHING	1
6	XP600-006	CONTROL SWITCH CLIP	1	39	XP600-039	FAN WHEEL	1
7	XP600-007	CAPACITOR CLIP	1	40	XP600-040	CORD STRAIN RELIEF	1
8	XP600-008	SCREW, 3.5 X 12, PAN HEAD	4	41	XP600-041	CLOSED-END TERMINAL (C4)	2
9	XP600-009	FEMALE END LEAD (SWITCH)	1	42	XP600-042	CLOSED-END TERMINAL (C5)	3
10	XP600-010	VENT, FRONT OUTLET	1	43	XP600-043	POWER CORD	1
11	XP600-011	SCREW, M5 X 6, PAN HEAD	1	44	XP600-044	NUT, M6, HEX	4
12	XP600-012	FEMALE TERMINAL (MOTOR)	3	45	XP600-045	SCREW, SELF-TAPPING, 2.9 X 14	4
13	XP600-013	LOCKWASHER, COUNTERSINK	1	46	XP600-046	NUT, CLIPPING BLOCK 1	4
14	XP600-014	RUBBER FOOT, RIGHT	1	47	XP600-047	NUT, CLIPPING BLOCK 2	2
15	XP600-015	KICK STAND	1	48	XP600-048	NUT, CLIPPING BLOCK 3	2
16	XP600-016	RUBBER FOOT, LEFT	1	49	XP600-049	WHEEL (HANDLE)	2
17	XP600-017	RUBBER SLEEVE, KICK STAND	2	50	XP600-050	BEARING, WHEEL	4
18	XP600-018	SCREW, SELF-TAPPING, M5 X 20	8	51	XP600-051	SCREW, PAN HEAD, M6 X 20	4
19	XP600-019	NYLON TIE	1	52	XP600-052	CENTERING BLOCK, UPPER HANDLE	1
20	XP600-020	LEAD WIRE, SWITCH	1	53	XP600-053	UPPER HANDLE	1
21	XP600-021	LEAD WIRE, CIRCUIT BREAKER	1	54	XP600-054	WASHER, FLAT, 6.4	4
22	XP600-022	GROUND WIRE (GFCI)	1	55	XP600-055	CENTERING BLOCK, LOWER HANDLE	1
23	XP600-023	CIRCUIT BREAKER, 12A	1	56	XP600-056	RIVET, 6 X 46	2
24	XP600-024	SCREW, SELF-TAPPING, M3 X 6	2	57	XP600-057	SCREW, SELF-TAPPING, 2.9 X 10	4
25	XP600-025	RECEPTICAL, GFCI	1	58	XP600-058	WASHER, FLAT, 3.5	4
26	XP600-026	VENT, COVER (MOTOR SIDE)	1	59	XP600-059	WASHER, FLAT, 5.4	1
27	XP600-027	NUT, M5	4	60	XP600-060	SCREW, PAN HEAD, M5 X 16	1
28	XP600-028	SPRING WASHER, M5	5	61	XP600-061	HOUSING, RIGHT	1
29	XP600-029	WASHER, FLAT	12	62	XP600-062	HOLE PLUG #2	2
30	XP600-030	WASHER, HEAT INSULATION	4	63	XP600-063	HOLE PLUG #1	2
31	XP600-031	HOUSING, LEFT	1	64	XP600-064	SCREW, SELF-TAPPING, ST4 X 16	21
32	XP600-032	CABLE CLIP, #2	4	65	XP600-065	VENT, COVER (FAN SIDE)	1
33	XP600-033	SCREW, SELF-TAPPING, ST4 X 12	8	66	XP600-066	SCREW, SELF-TAPPING ST5 X 12	1

## WIRING DIAGRAM

