



Electronic Service Manuals

This electronic document is provided as a service to our customers. We do not create the contents of the information contained in this document. Should you have detailed questions pertaining to the information contained in this document, you may contact Michco, or the manufacturer which provided the original information in this electronic deliverable. Michco's only part in this electronic deliverable was the electronic assembly process. By providing this manual on line we are not guaranteeing parts availability.

You may contact Michco through the following methods:

Phone (517) 484-9312 or (800) 331-3339

2011 N. High St. -- Lansing, Michigan -- 48906

Fax: (517) 484-9836

Email: CustServe@Michco.com

Web site: www.Michco.Com

Parts Web site: www.FloorMachineParts.Com

Order Parts on Line at:

www.FloorMachineParts.Com

Directly to Parts & Service:

By Email: **Shop@Michco.com**

By Fax: (517) 702-2041

By Voice: Use numbers above.

Serving the Cleaning Industry Since 1922

Notice: All copyrighted material remains property of original owners, all trademarks are property of respective owners. Manuals are subject to Manufacturer's reproduction limitations. Originals or reproductions were provided by manufacturers through a request. We make no warranty as to the correctness of information provided in this document and you assume all risk. By placing these manuals on line we are not declaring our corporation to be an manufacturer authorized dealer or provider, please check our web site for authorized manufacturers we represent.



2300/2320/2340

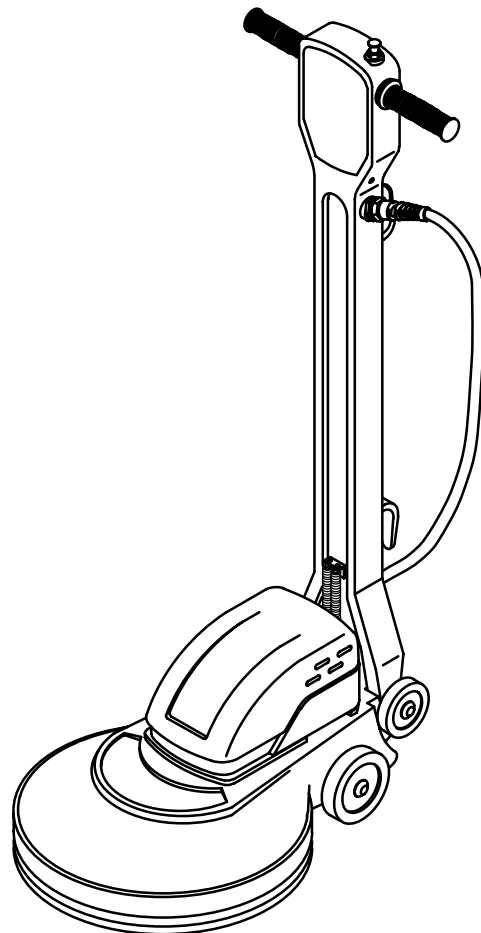
High Speed Floor Burnisher
Pulidora de Piso de Alta Velocidad

U.S. PATENT NO.: D.343,932 & D.345,035

Models:

- 608326 – 2300
- 608325 – 2320
- 607879 – 2340
- 609902 – 2300 SI

Operator and Parts Manual
Manual del Operador y Piezas

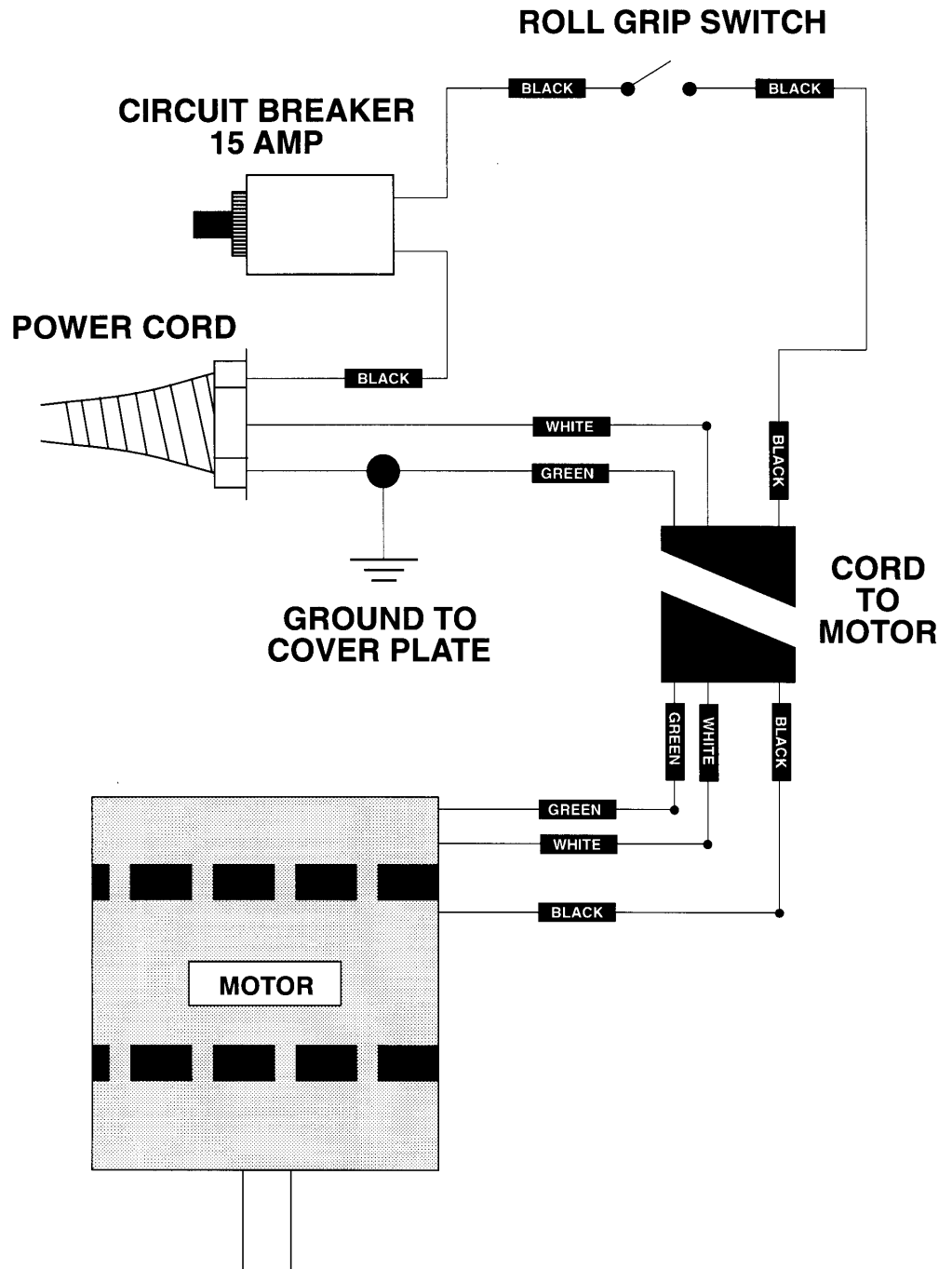


TENNANT COMPANY
Commercial Products
12875 RANSOM STREET
HOLLAND MI 49424

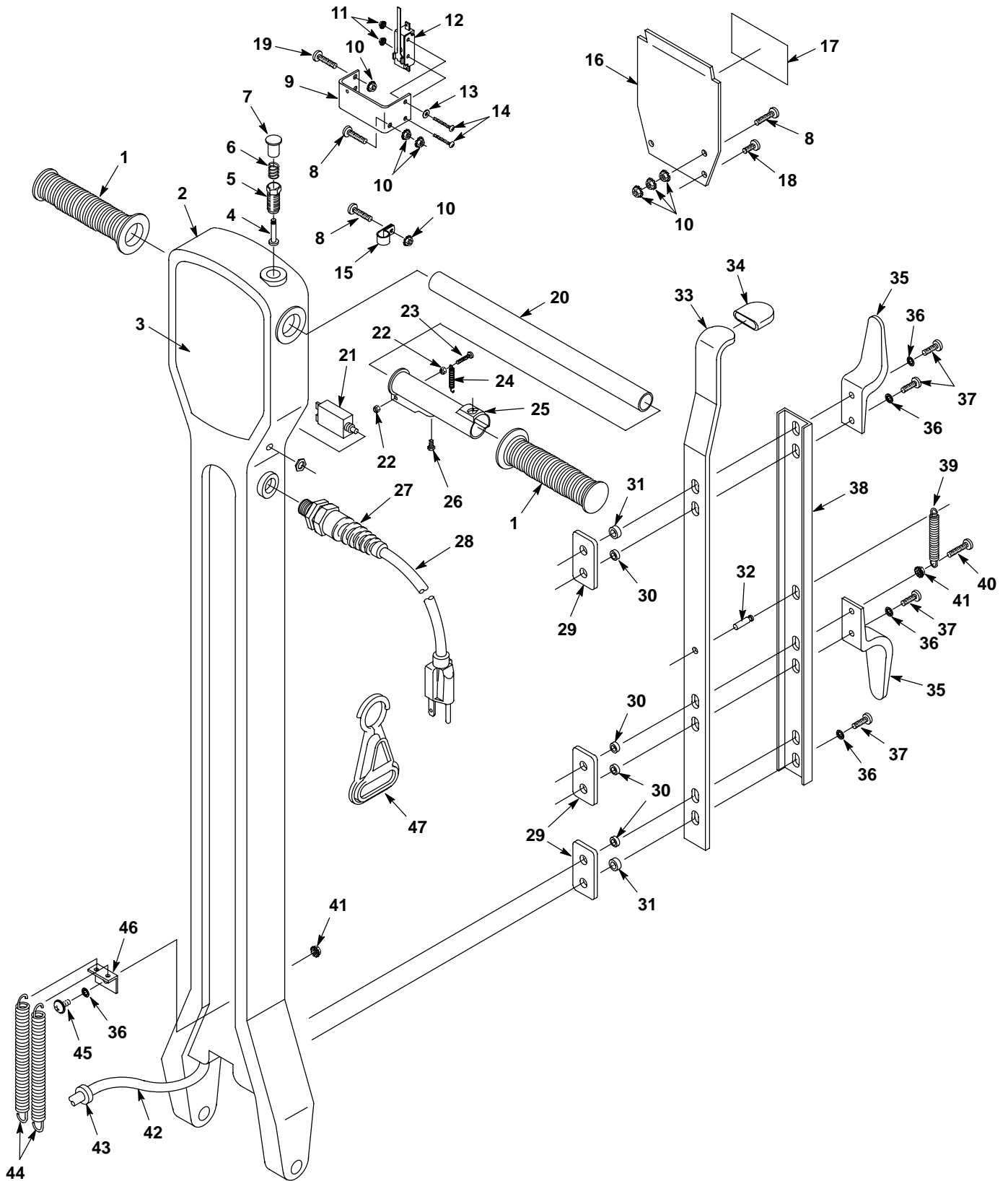
CUSTOMER SERVICE: 1-800-964-9644
OUTSIDE U.S.: 1-616-786-2345
FAX: 1-800-678-4240

607759
Rev. 01 (09-02)

120V



HANDLE GROUP
GRUPO DEL ASA



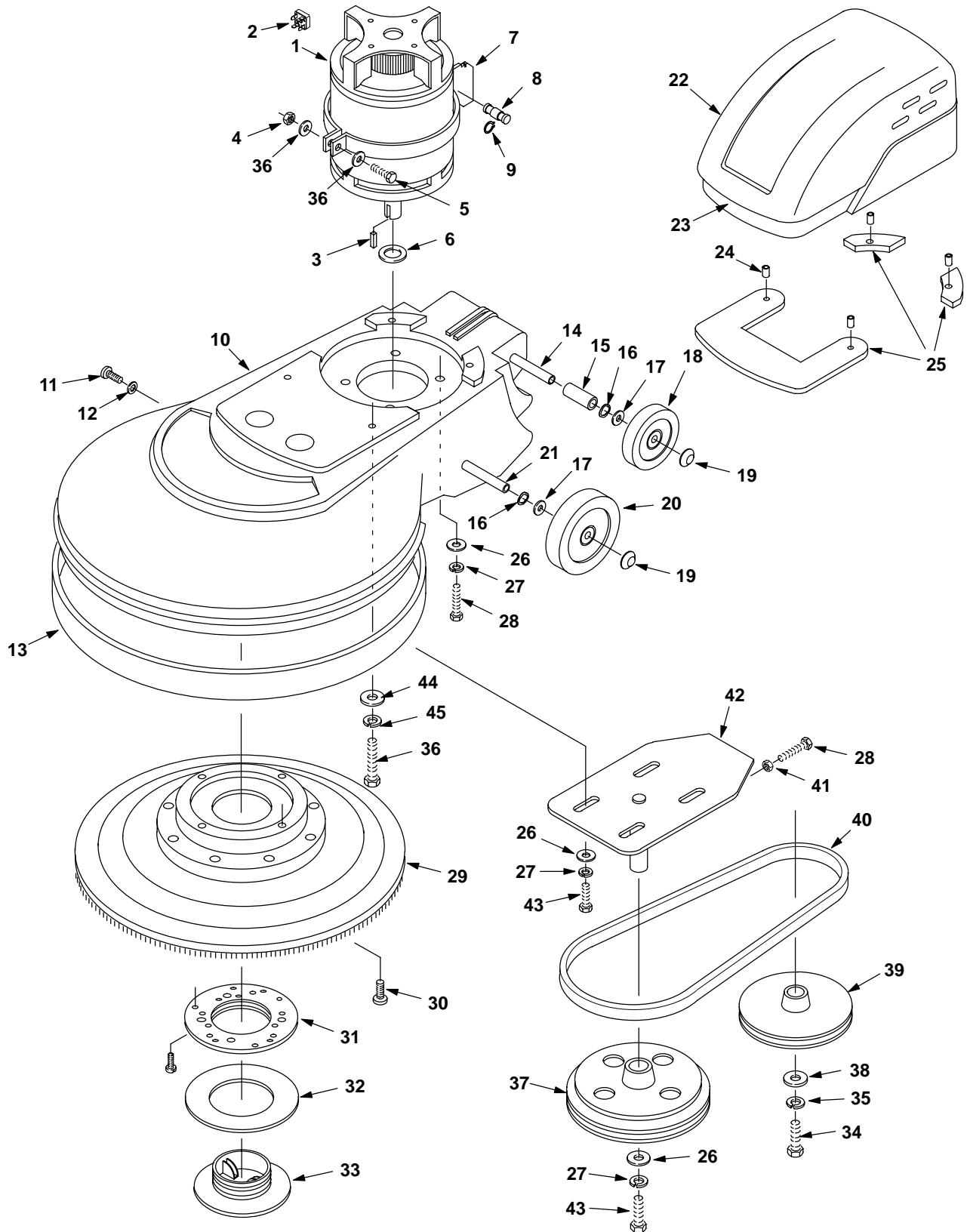
HANDLE GROUP
GRUPO DEL ASA

REF	PART #	DESCRIPTION	QTY.
1	200823	GRIP, HANDLE TUBE	2
2	607637	HANDLE, WHITE	1
3	608115	LABEL, 2300	1
	608116	LABEL, 2320	1
	608117	LABEL, 2340	1
4	230856	PIN, LOCK RELEASE	1
5	230857	SOCKET, LOCK	1
6	140401	SPRING, LOCK BUTTON	1
7	230855	BUTTON, LOCK RELEASE	1
8	140900	SCREW, 10-24X3/4	3
9	230854	BRACKET, SWITCH	1
10	140519	NUT, 10-24	8
11	140539	NUT, 6-32	2
12	605407	●SWITCH	1
13	140032	WASHER, #6 FLAT	1
14	140829	SCREW, 6-32X1	2
15	140324	CLAMP, CABLE 5/16ID BLK NYLON	1
16	612763	PLATE, HANDLE REAR	1
17	613286	LABEL, WARNING	1
18	140197	SCREW, 10-24X3/8 TRSPHL SEM	2
19	140823	SCREW, 10-24X5/8 PHL	2
20	230853	HANDLE, TUBE	1
21	605201	●BREAKER, CIRCUIT 17A (2300/2320)	1
	130752	BREAKER, CIRCUIT 20A (2340)	1
22	28990	NUT, 8-32 NYLOCK	2

REF	PART #	DESCRIPTION	QTY.
23	6010.16	SCREW, 8-32X1	1
24	600987	SPRING	1
25	100355	SLEEVE, LOCKING	1
26	140259	SCREW, 1/4-20X5/8	1
27	602849	GRIP, CORD	1
28	610974	●CORD, 14/3X75' YELLOW	1
29	230852	PLATE, BACKING	3
30	140147	SLEEVE, .44ODX.25BX.21L	4
31	140146	BUSHING, .50ODX.25BX.21L	2
32	140604	PIN, GROOVE 1/4X3/4	1
33	230860	HANDLE, LATCH	1
34	200821	GRIP, LATCH	1
35	602750	HOOK, CORD	2
36	140052	WASHER, 1/4 EXT	6
37	140864	SCREW, 1/4-20X3/4	5
38	230859	CHANNEL, LATCH HANDLE	1
39	140402	SPRING, HANDLE LATCH	1
40	140881	SCREW, 1/4-20X1	1
41	140524	NUT, 1/4-20 KEP	2
42	130204	CORD, 14/3X57" BLACK	1
43	130141	BUSHING, STRAIN-RELIEF	1
44	140437	SPRING	2
45	140864	SCREW, 1/4-20X3/4	1
46	230773	BRACKET, SPRING	1
47	130176	●BELT CLIP, STRAIN-RELIEF (OPTIONAL)	1

● RECOMMENDED STOCK ITEMS / ARTICULOS RECOMENDADOS PARA
MANTENER EN EXISTENCIA

BASE GROUP
GRUPO BASE



BASE GROUP
GRUPO BASE

REF	PART #	DESCRIPTION	QTY.
▽ 1	600825	●MOTOR, 120V (2300/2320)	1
▲ 2	190753	●-RECTIFIER, 120V	1
▲	190752	●-CARBON BRUSH, 120V (2/PK)	2
▽ 1	130498	●MOTOR, 120V (2340)	1
▲ 2	190743	●-RECTIFIER, 120V	1
▲	22117	●-CARBON BRUSH, 120V	4
3	140628	KEY, 3/16X3/16X1	1
4	140546	NUT, 5/16-18	1
5	140221	SCREW, 5/16-18X1-1/4	1
6	230447	SPACER, PULLEY	1
7	230918	PLATE, LATCH	1
8	230772	PIN, PLATE	1
9	140421	RING, RETAINING	1
10	607760	BASE, HIGH SPEED TEAL	1
11	140824	SCREW, 1/4-20X5/8	2
12	140003	WASHER, 1/4	2
13	602544	BUMPER	1
14	608910	AXLE, 1/2DIA X 12.915"	1
15	140148	SLEEVE, .625D	2
16	4252	WASHER, 1/2 COMP	4
17	3148.816	WASHER, FLAT 7/8X1/2	4
18	103066	●WHEEL, 4"X1.5 GRAY	2
19	103019	CAP, HUB WHEEL	4
20	103067	●WHEEL, 5"X1.5 GRAY	2
21	608913	AXLE, 1/2DIA X 15.73	1
22	607762	COVER, MOTOR TEAL	1
23	120582	LABEL, RECESS	1
24	069760417	SLEEVE (2300)	4

REF	PART #	DESCRIPTION	QTY.
25	600824	GASKET, SPACER SET (2300)	1
26	32492	WASHER, FLAT .38 STD	11
27	140017	WASHER, LOCK SPLIT 0.38	9
28	611048	SCREW, 3/8-16X1-1/4 HXHD	5
▽ 29	240240	●ASM., PAD DRIVER	1
▲ 30	140949	SCREW, 5/16-18X1-1/4	4
▲ 31	621326000	RING, CENTERLOCK	1
▲ 32	572084000	WASHER, CENTERLOCK	1
▲ 33	621327000	●CENTERLOCK, PAD	1
34	140223	SCREW, 5/16-18X3/4	2
35	140015	WASHER, LOCK 5/16	2
37	611695	PULLEY, DRIVE	1
36	140209	SCREW, 1/4-20X2-1/2 (2300)	4
	600591	SCREW, 1/4-20X1-7/8 (2320/2340)	4
38	25732	WASHER, 1-1/4X.359	1
39	240075	●PULLEY, 3-1/4" DIA (2300)	1
39	240076	●PULLEY, 4" DIA (2320)	1
39	240077	●PULLEY, 5" DIA (2340)	1
40	240078	●BELT (2300)	1
	240079	●BELT (2320)	1
	240080	●BELT (2340)	1
41	140545	NUT, JAM 3/8-16	1
42	230448	BRACKET, DRIVE CASTING	1
43	02994	SCREW, HEX .38-16X0.75	5
44	140000	WASHER, FLAT 1/4	4
45	140016	WASHER, LOCK 1/4	4

▽ ASSEMBLY / CONJUNTO

▲ INCLUDED IN ASSEMBLY / INCLUIDO EN EL CONJUNTO

● RECOMMENDED STOCK ITEMS / ARTICULOS RECOMENDADOS PARA
MANTENER EN EXISTENCIA