



## Electronic Service Manuals

This electronic document is provided as a service to our customers. We do not create the contents of the information contained in this document. Should you have detailed questions pertaining to the information contained in this document, you may contact Michco, or the manufacturer which provided the original information in this electronic deliverable. Michco's only part in this electronic deliverable was the electronic assembly process. By providing this manual on line we are not guaranteeing parts availability.

You may contact Michco through the following methods:

Phone (517) 484-9312 or (800) 331-3339

2011 N. High St. -- Lansing, Michigan -- 48906

Fax: (517) 484-9836

Email: [CustServe@Michco.com](mailto:CustServe@Michco.com)

Web site: [www.Michco.Com](http://www.Michco.Com)

Parts Web site: [www.FloorMachineParts.Com](http://www.FloorMachineParts.Com)

Order Parts on Line at:

**[www.FloorMachineParts.Com](http://www.FloorMachineParts.Com)**

Directly to Parts & Service:

By Email: **[Shop@Michco.com](mailto:Shop@Michco.com)**

By Fax: (517) 702-2041

By Voice: Use numbers above.

**Serving the Cleaning Industry Since 1922**

Notice: All copyrighted material remains property of original owners, all trademarks are property of respective owners. Manuals are subject to Manufacturer's reproduction limitations. Originals or reproductions were provided by manufacturers through a request. We make no warranty as to the correctness of information provided in this document and you assume all risk. By placing these manuals on line we are not declaring our corporation to be an manufacturer authorized dealer or provider, please check our web site for authorized manufacturers we represent.



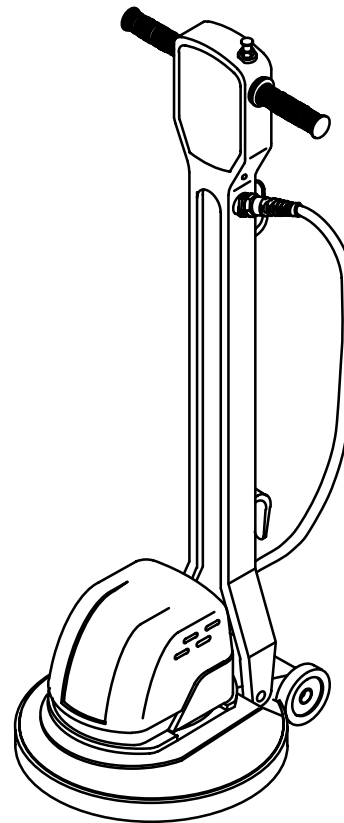
# 2000/2010/2030 2040/2160/2170

Floor Machine  
Máquina para pisos

**Model No.:**

- 609671 – 2000 (120V/60HZ)
- 609622 – 2010 (120V/60HZ) HD
- 609784 – 2010 (240V/50HZ) HD
- 609621 – 2010 (230V/60HZ) HD
- 613739 – 2010 (220V/60HZ) HD
- 609672 – 2030 (120V/60HZ)
- 609624 – 2040 (120V/60HZ) HD
- 609786 – 2040 (230V/50HZ) HD
- 609664 – 2040 (220V/60HZ) HD
- 613738 – 2040 (220V/60HZ) HD
- 607642 – 2160 (120V/60HZ) DS
- 607643 – 2170 (120V/60HZ) DS
- 609665 – 2170 (230V/60HZ) DS

**Operator and Parts Manual  
Manual del Operador y Piezas**



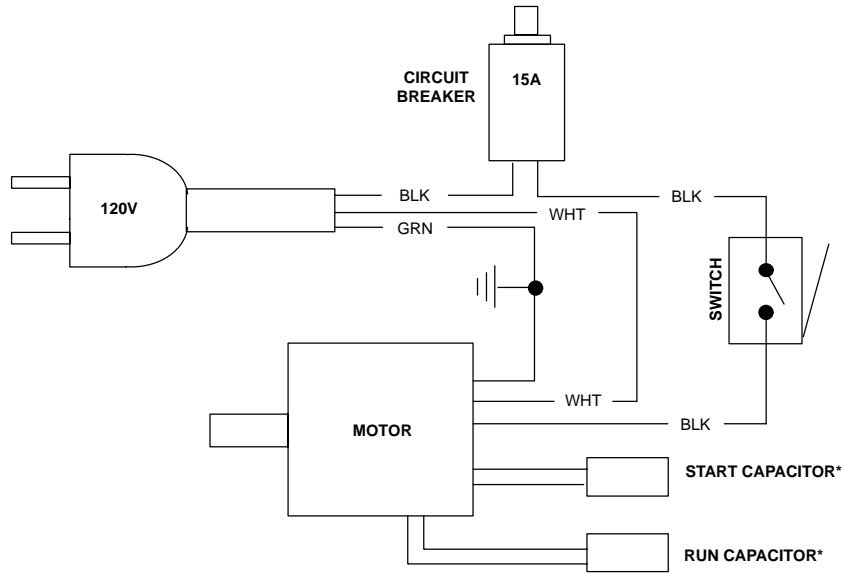
**TENNANT COMPANY**  
Commercial Products  
12875 RANSOM STREET  
HOLLAND MI 49424 U.S.A.

**CUSTOMER SERVICE:**  
1-800-982-7658  
1-616-786-2330  
**FAX:** 1-800-678-4240  
1-616-786-2345

**607644  
Rev. 04 (10-02)**

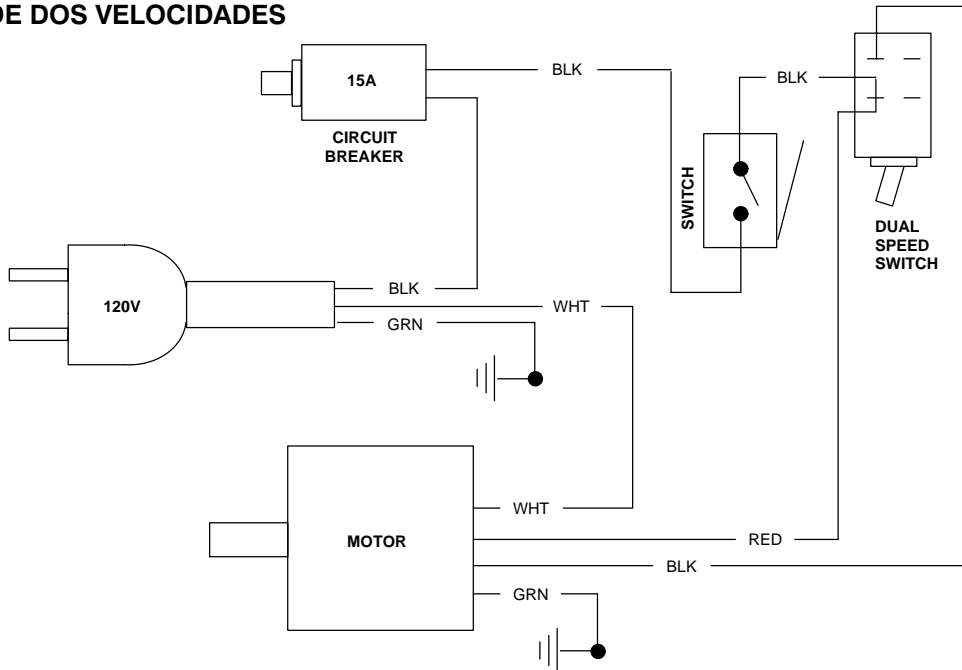
# ELECTRICAL DIAGRAMS DIAGRAMAS ELECTRICAS

## SINGLE SPEED – 120V MODELOS DE UNA VELOCIDAD

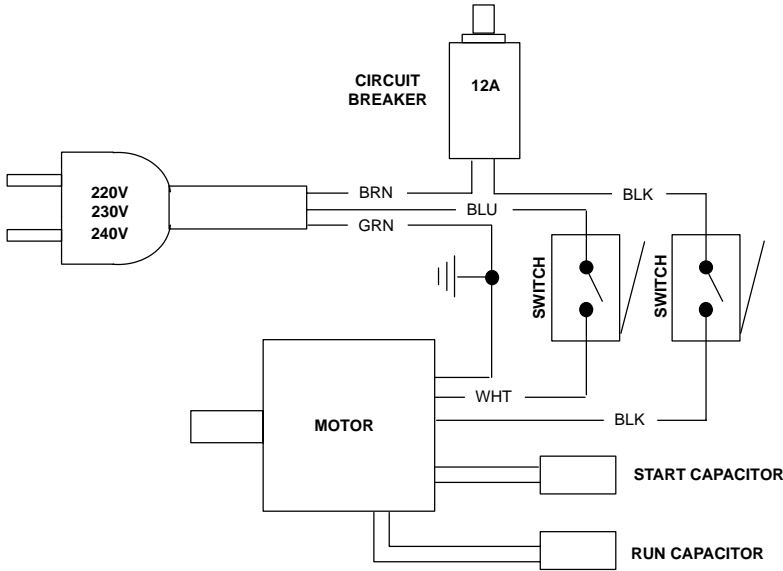


\*1.5HP MODEL ONLY

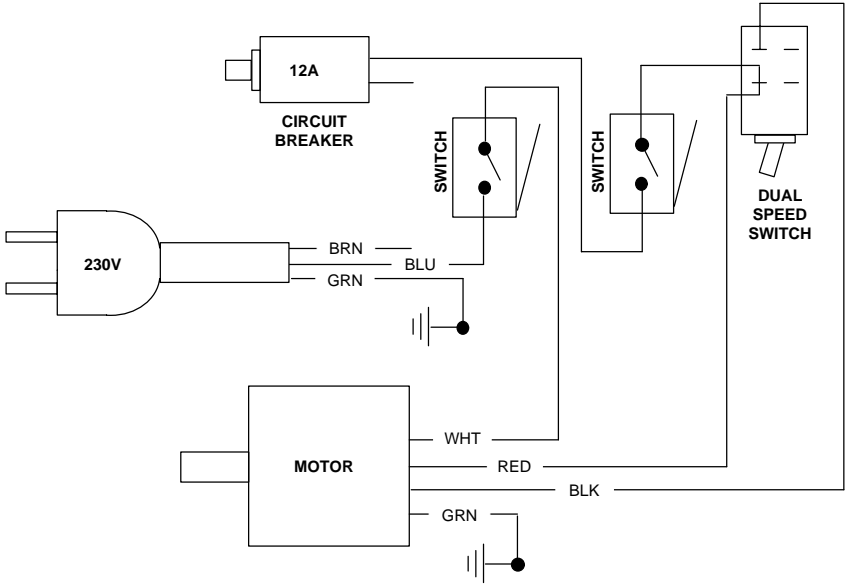
## DUAL SPEED – 120V MODELOS DE DOS VELOCIDADES



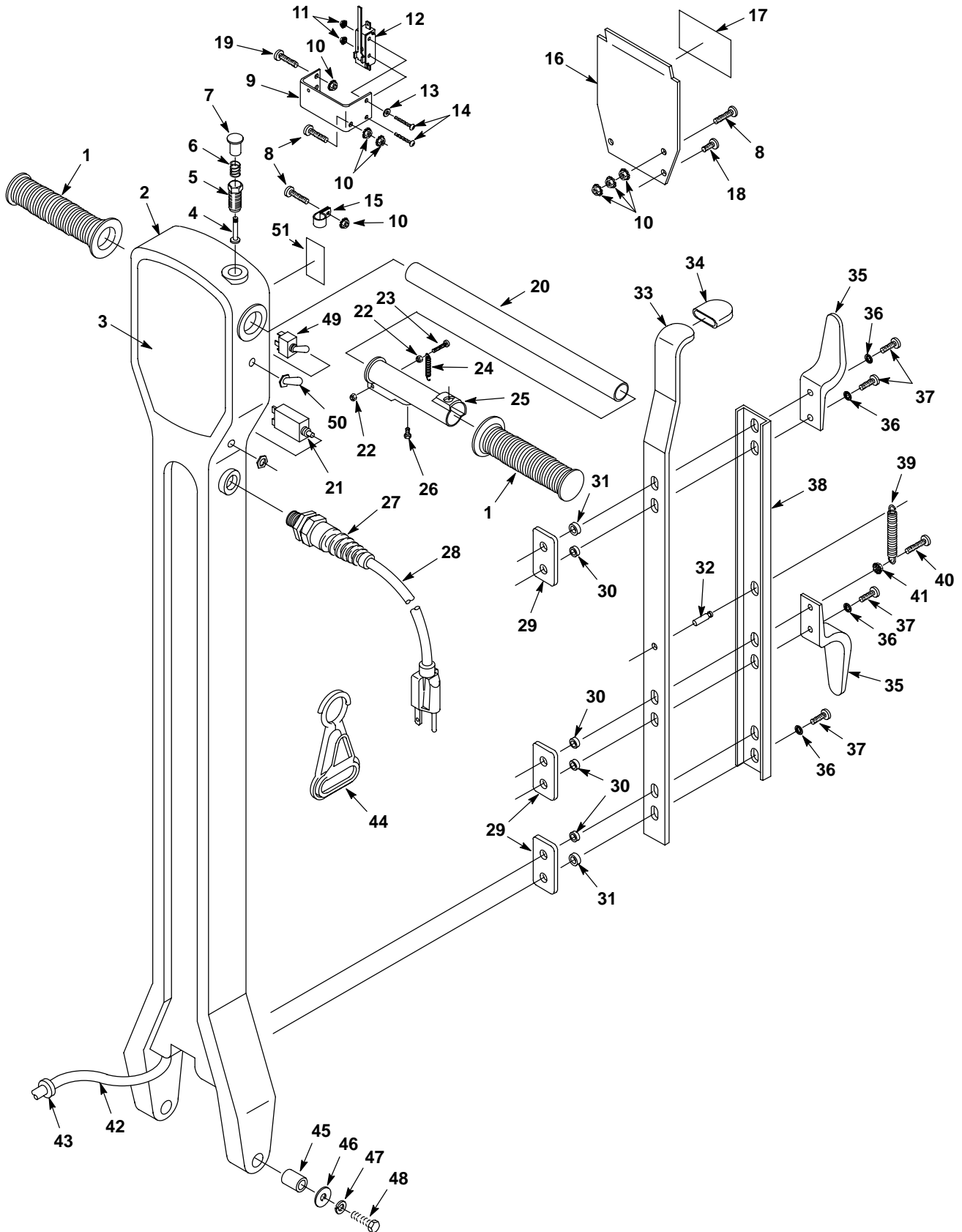
**SINGLE SPEED – 220V/230V/240V**  
**MODELOS DE UNA VELOCIDAD**



**DUAL SPEED – 230V**  
**MODELOS DE DOS VELOCIDADES**



HANDLE GROUP  
GRUPO DEL ASA



**HANDLE GROUP**  
**GRUPO DEL ASA**

REF	PART #	DESCRIPTION	QTY.
1	200823	GRIP, HANDLE TUBE	2
2	607637	HANDLE, OFF-WHITE (2000/2010/2030/2040)	1
	607692	HANDLE, DS, OFF-WHITE (2160/2170)	1
3	608121	LABEL, TENNANT 2000	1
	609058	LABEL, TENNANT 2010	1
	609059	LABEL, TENNANT 2030	1
	608123	LABEL, TENNANT 2040	1
	609148	LABEL, TENNANT 2160	1
	609149	LABEL, TENNANT 2170	1
4	230856	PIN, LOCK RELEASE	1
5	230857	SOCKET, LOCK	1
6	140401	SPRING, LOCK BUTTON	1
7	230855	BUTTON, LOCK RELEASE	1
8	140900	SCREW, #10-24X3/4	3
9	230854	BRACKET, SWITCH	1
10	140519	NUT, #10-24	8
11	140539	NUT, #6-32	2
12	605407	●SWITCH (120V)	1
	605407	●SWITCH (220V/230V/240V)	2
13	140032	WASHER, #6 FLAT	1
14	140829	SCREW, #6-32X1 (120V)	2
	140830	SCREW, #6-32X1-5/8 (220V/230V/240V)	2
15	140324	CLAMP, CABLE 5/16 ID BLK NYLON (SINGLE SPD & HD MODELS)	1
	140328	CLAMP, CABLE 3/8ID BLK NYLON (DUAL SPD MODEL)	1
16	609700	PLATE, HANDLE REAR	1
17	613286	LABEL, WARNING	1
18	140197	SCREW, 10-24X3/8 TRSPHL SEM	2
19	140823	SCREW, 10-24X5/8 PHL	2
20	230853	HANDLE, TUBE	1
21	605197	●BREAKER, CIRCUIT 15A (120V)	1
	130670	●BREAKER, CIRCUIT 12A (220V/230V/240V)	1
22	28990	NUT, 8-32 NYLOCK	2

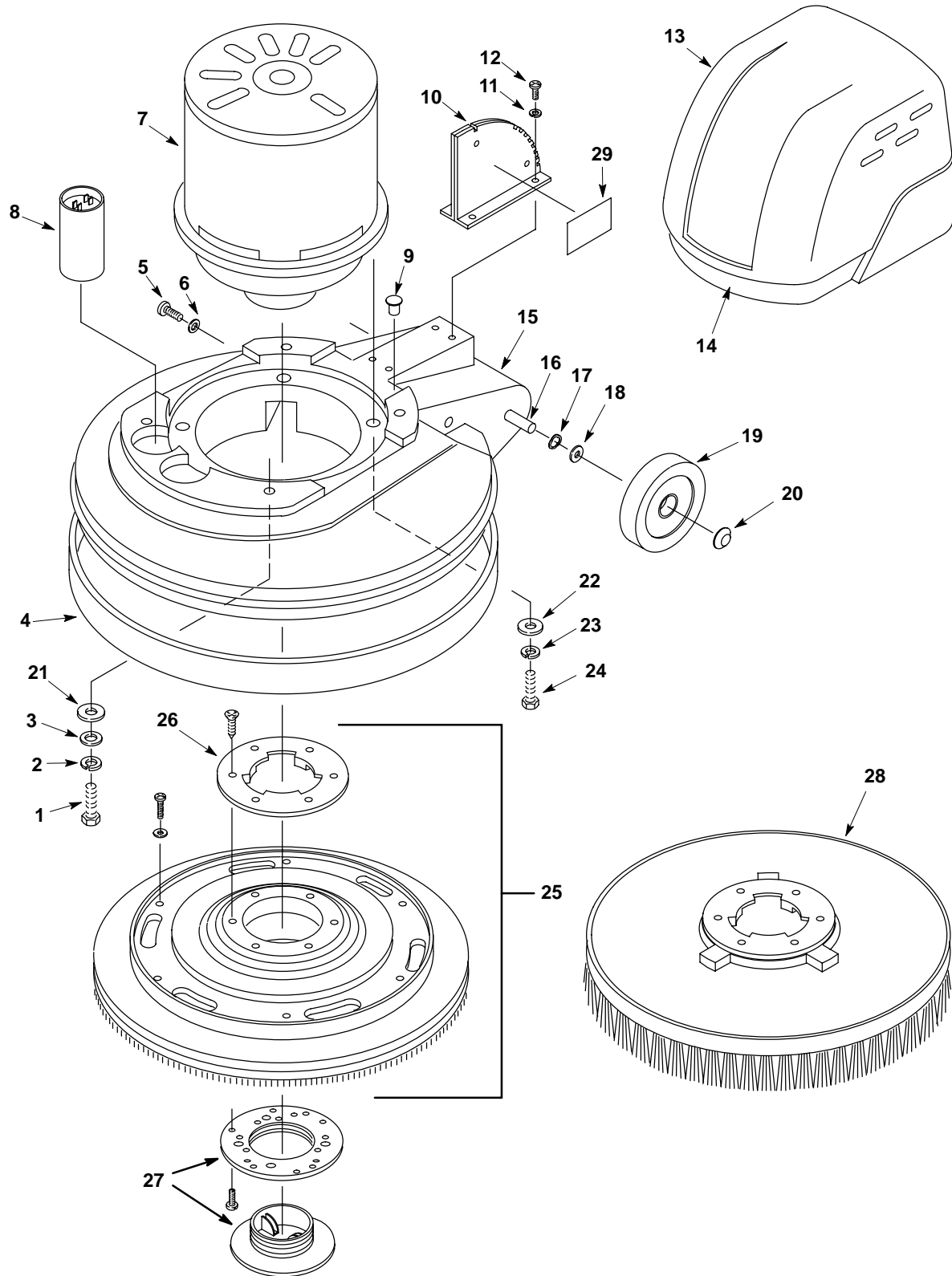
REF	PART #	DESCRIPTION	QTY.
23	6010.16	SCREW, 8-32X1	1
24	600987	SPRING	1
25	100355	SLEEVE, LOCKING	1
26	140259	SCREW, HEX .25-20X.62	1
27	602849	●GRIP, CORD (120V)	1
	130167	●GRIP, CORD (220V/230V/240V)	1
28	602747	●CORD, 14/3X50' YELLOW (120V)	1
	600324	●CORD, 3X1.5MM2X15M BLACK (220V/230V/240V)	1
29	230852	PLATE, BACKING	3
30	140147	SLEEVE, .25X.44X.20	4
31	140146	SLEEVE, .25X.50X.19	2
32	140604	PIN, GROOVE 1/4X3/4	1
33	611141	LATCH, HANDLE	1
34	200821	GRIP, LATCH	1
35	602750	HOOK, CORD	2
36	140052	WASHER, 1/4 EXT	5
37	140864	SCREW, 1/4-20X3/4	5
38	230859	CHANNEL, LATCH HANDLE	1
39	140402	SPRING, HANDLE LATCH	1
40	140881	SCREW, 1/4-20X1	1
41	140524	NUT, 1/4-20 KEP	1
42	130204	CORD, 14/3X57" BLACK (SINGLE SPD & HD MODELS)	1
	130203	CORD, 14/4X57" BLACK (DUAL SPD MODEL)	1
43	130141	BUSHING, STRAIN-RELIEF	1
44	130176	●BELT CLIP, STRAIN-RELIEF (OPTIONAL)	1
45	140148	SLEEVE, .625DX1.4L	2
46	3148.816	WASHER, FLAT	2
47	140024	WASHER, LOCK	2
48	140235	SCREW, 1/2-13X2 HXHDCP	2
49	130726	SWITCH, TOGGLE (DUAL SPD MODELS)	1
50	130990	BOOT, RUBBER SWITCH BLACK (DUAL SPD MODELS)	1
51	120675	LABEL, OPERATION (DUAL SPD MODELS)	1

▽ ASSEMBLY / CONJUNTO

▲ INCLUDED IN ASSEMBLY / INCLUIDO EN EL CONJUNTO

● RECOMMENDED STOCK ITEMS / ARTICULOS RECOMENDADOS PARA  
MANTENER EN EXISTENCIA

BASE GROUP  
GRUPO BASE



**BASE GROUP**  
**GRUPO BASE**

REF	PART #	DESCRIPTION	QTY.
1	140255	SCREW, 1/4-20X1.75	4
2	140016	WASHER, LOCK	4
3	140000	WASHER, FLAT	4
4	602543	BUMPER, (17" MODELS)	1
	602545	BUMPER, (20" MODELS)	1
5	140852	SCREW, #12X3/4 SHTMETL PNP HL (17" MODELS)	2
	140824	SCREW, 1/4-20X5/8 TRSPHL (20" MODELS)	2
6	019680127	WASHER, FLAT (17" MODELS)	2
	140003	WASHER, FNDR (20" MODELS)	2
∇ 7	130497	MOTOR, 120V/60HZ, 1 HP (2000/2030)	1
▲	130465	COUPLING, MOTOR	1
▲ 8	130762	●CAPACITOR, START (BLACK)	1
	606243	TAPE, DBL STICK 1"X0.170 FT.	2
∇ 7	130451	MOTOR, 120V/60HZ 1.5 HP (2010/2040)	1
▲	130465	COUPLING, MOTOR	1
▲ 8	605286	●CAPACITOR, RUN (SILVER)	1
	130762	●CAPACITOR, START (BLACK)	1
	606243	TAPE, DBL STICK 1"X0.170'	3
∇ 7	130494	MOTOR, 120V (2160/2170)	1
▲	190742	●CARBON BRUSH CARD ASM.	1
▲	22117	●CARBON BRUSH	4
▲	190753	●RECTIFIER, 120V	1
▲	190744	●CONTROL, SPEED 120V	1
▲	515021	●HOLDER	1
∇ 7	600807	MOTOR, 220V/230V/240V/50HZ, 1.5 HP (2010/2040)/613738-2040	1
∇ 7	600808	MOTOR, 220V/230V/60HZ, 1.5 HP (2010/2040)	1
▲ 8	605286	●CAPACITOR, RUN (SILVER) (2010/2040)	1
	130762	●CAPACITOR, START (BLACK) (2010/2040)	1
	606243	TAPE, DBL STICK 1"X0.170'	3
∇ 7	130488	MOTOR, 1800/3200 230V-DS (DUAL SPD 2170 MODEL)	1
▲	600281	●CARBON BRUSH CARD ASM.	1
▲	190311	●CARBON BRUSH	4
▲	190312	●RECTIFIER, 230V	1
▲	190745	●CONTROL, SPEED 230V	1
9	130198	PLUG	1
10	611133	PLATE, LATCH	1

REF	PART #	DESCRIPTION	QTY.
11	140015	WASHER, LOCK	4
12	140226	SCREW, 5/16-18X.625	4
13	<del>607698</del>	COVER, MOTOR, TEAL <b>607635</b>	1
14	120582	DECAL, RECESS	1
15	607641	BASE, TEAL, (2000/2010/2160)	1
	607633	BASE, TEAL, (2040/2130/2170)	1
16	608909	AXLE, 1/2X10.040"	1
17	4252	WASHER, COMP.	2
18	3148.816	WASHER, FLAT	2
19	103066	●WHEEL, 4"X1.5 GRAY	2
20	103019	CAP, HUB	2
21	140027	WASHER, FLAT .31	4
22	140003	WASHER, 1/4X1 FNDR (SINGLE SPD & HD MODELS)	8
	140046	WASHER, 1.00X.392X.090 FLAT (DUAL SPD MODELS)	4
23	140016	WASHER, LOCK SPLIT 0.25 (SINGLE SPD & HD MODELS)	4
	140015	WASHER, LOCK SPLIT 0.31 (DUAL SPD MODELS)	4
24	140212	SCREW, 1/4-20X1-1/2 HXHDCP (SINGLE SPD & HD MODELS)	4
	140216	SCREW, 5/16-18X1-1/2 HXHDCP (DUAL SPD MODELS)	4
∇ 25	605124	ASM., PAD DRIVER 432MM (17") SINGLE SPD & HD MODELS (OPT.)	1
	605123	ASM., PAD DRIVER 508MM (20") SINGLE SPD & HD MODELS (OPT.)	1
	603537	ASM., PAD DRIVER 432MM (17") DUAL SPD MODELS (OPTIONAL)	1
	605225	ASM., PAD DRIVER 508MM (20") DUAL SPD MODELS (OPTIONAL)	1
	600255	BLOCK, WOOD SANDING 432MM (17") SINGLE SPD (OPTIONAL)	1
	600256	BLOCK, WOOD SANDING 508MM (20") SINGLE SPD (OPTIONAL)	1
▲ 26	603539	PLATE, CLUTCH PLASTIC	1
27	603538	●LOCK, CENTER (OPTIONAL)	1
28	240255	BRUSH, DYNA-SCRUB 432MM (17") SINGLE SPD (OPTIONAL)	1
	240257	BRUSH, DYNA-SCRUB 508MM (20") SINGLE SPD (OPTIONAL)	1
	240256	BRUSH, STRATA-GRIT 432MM (17") SINGLE SPD (OPTIONAL)	1
	240258	BRUSH, STRATA-GRIT 508MM (20") SINGLE SPD (OPTIONAL)	1
	<del>605117</del>	<del>BRUSH, ROTARY SHOWERFEED 432MM (17") SINGLE SPD (OPT.)</del>	1
	<del>605118</del>	<del>BRUSH, ROTARY SHOWERFEED 508MM (20") SINGLE SPD (OPT.)</del>	1
29	120619	LABEL, WARNING	1

∇ ASSEMBLY / CONJUNTO

▲ INCLUDED IN ASSEMBLY / INCLUIDO EN EL CONJUNTO

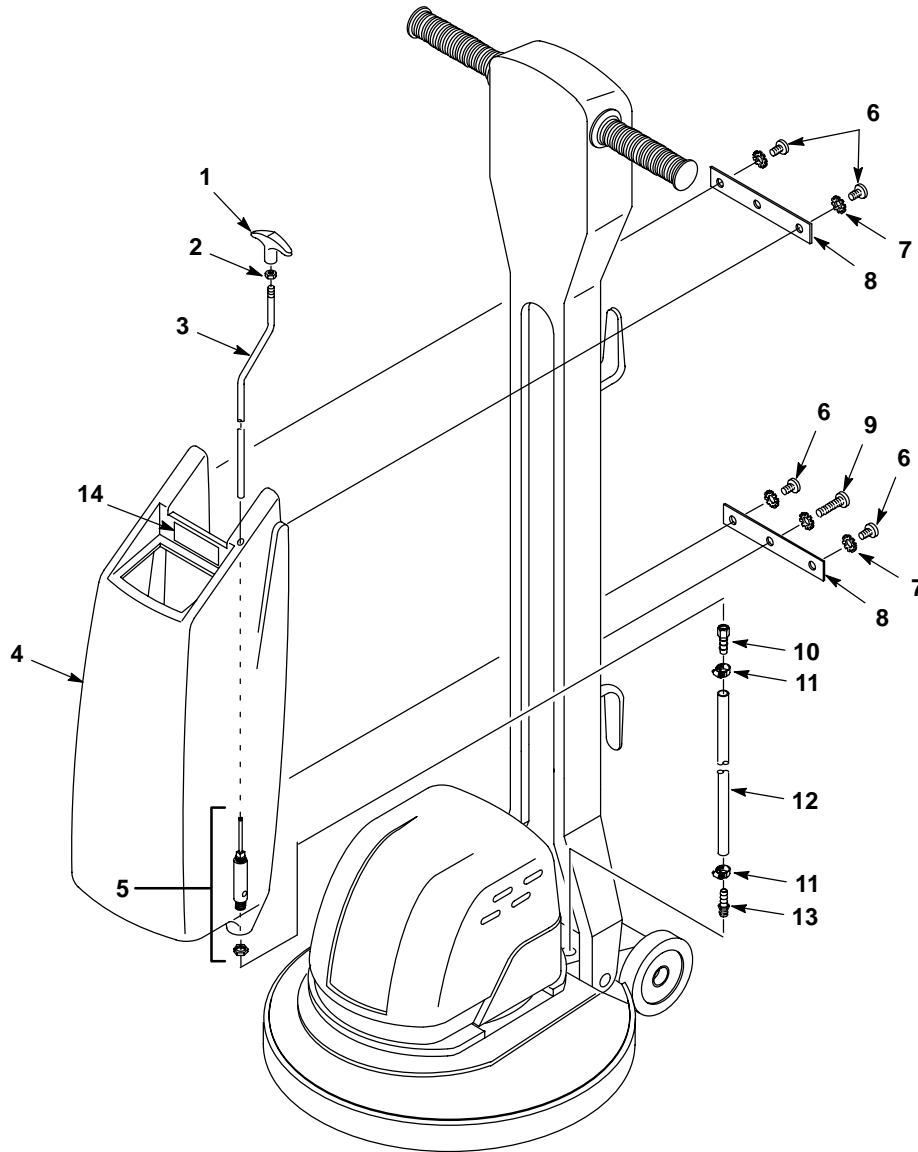
● RECOMMENDED STOCK ITEMS / ARTICULOS RECOMENDADOS PARA

MANTENER EN EXISTENCIA

1019263 Brush, Disk, Scrub (20") HARD FLOOR  
607463 Brush, Disk, Scrub (18") CARPET

1019262 Brush, Disk, Scrub (17") HARD FLOOR  
604989 Brush, Disk, Scrub (15") CARPET

SOLUTION TANK GROUP  
GRUPE DEL DEPÓSITO DE DISOLUCIÓN



HAWK GRAY

REF	PART #	DESCRIPTION	QTY.
190123	▽ 609968	ASM., SOLUTION TANK, <del>TEAL</del>	1
	▲ 1 240194	KNOB, HEIGHT ADJ.	1
	▲ 2 140548	NUT 5/16	1
	▲ 3 230399	ROD, VALVE SOLUTION TANK	1
611864	▲ 4 609967	TANK, SOLUTION, <del>TEAL</del> HG	1
	▲▽ 5 700197	ASM., VALVE	1
	▲ 210216	VALVE, W/ NUT & O-RING	1
	▲ 210218	O-RING SEAL FOR VALVE	1
	▲ 6 140885	SCREW, TRS 1/4-20X1/2 PHL	4

REF	PART #	DESCRIPTION	QTY.
	▲ 7 140052	WASHER, LOCK EXT. .25	5
	▲ 8 230475	BRACKET, SOLUTION TANK	2
	▲ 9 140881	SCREW, 1/4-20X1	1
	▲ 10 150511	FITTING	1
	▲ 11 140305	CLAMP, HOSE	2
	▲ 12 606667	HOSE 3/8 ID X 10"	1
	▲ 13 150516	FITTING	1
	▲ 14 610722	DECAL, WARNING FLAMMABLE	1

▽ ASSEMBLY / CONJUNTO

▲ INCLUDED IN ASSEMBLY / INCLUIDO EN EL CONJUNTO

● RECOMMENDED STOCK ITEMS / ARTICULOS RECOMENDADOS PARA MANTENER EN EXISTENCIA