



Electronic Service Manuals

This electronic document is provided as a service to our customers. We do not create the contents of the information contained in this document. Should you have detailed questions pertaining to the information contained in this document, you may contact Michco, or the manufacturer which provided the original information in this electronic deliverable. Michco's only part in this electronic deliverable was the electronic assembly process. By providing this manual on line we are not guaranteeing parts availability.

You may contact Michco through the following methods:

Phone (517) 484-9312 or (800) 331-3339

2011 N. High St. -- Lansing, Michigan -- 48906

Fax: (517) 484-9836

Email: CustServe@Michco.com

Web site: www.Michco.Com

Parts Web site: www.FloorMachineParts.Com

Order Parts on Line at:

www.FloorMachineParts.Com

Directly to Parts & Service:

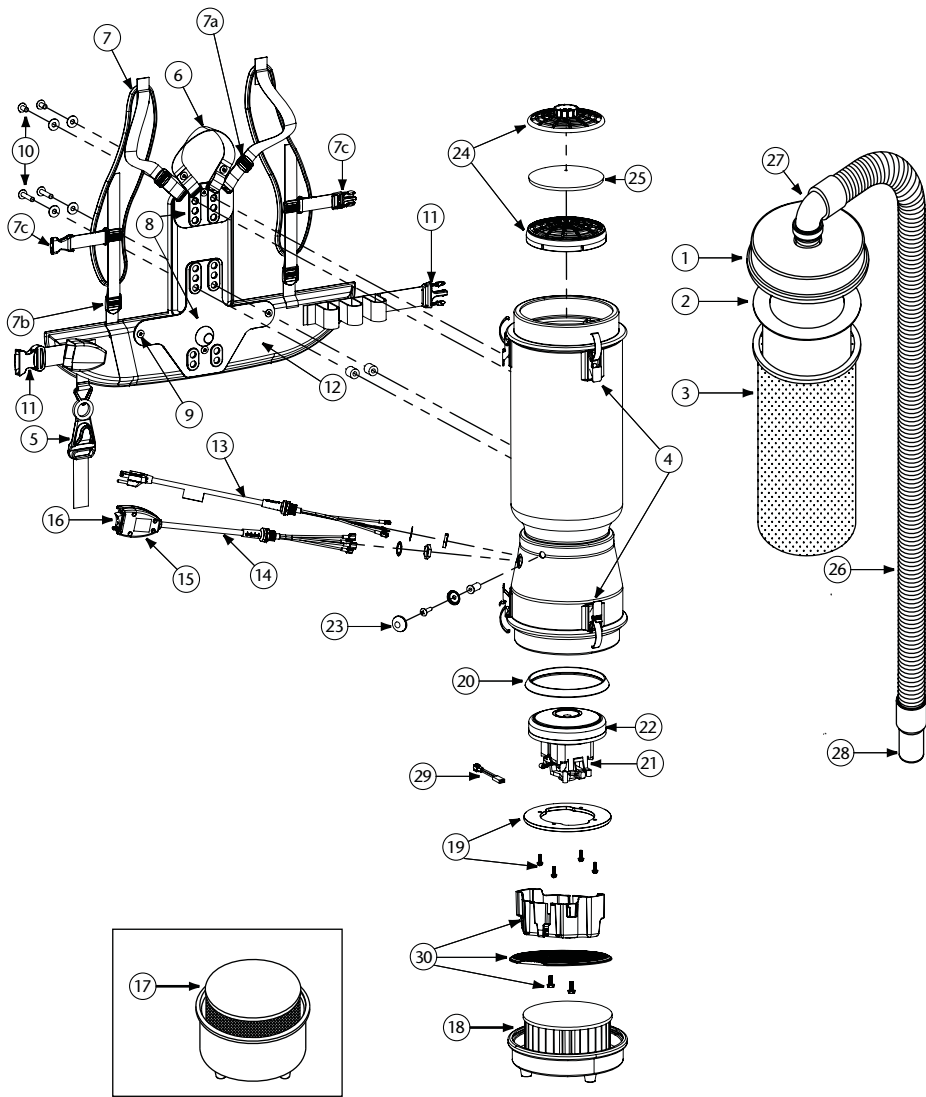
By Email: **Shop@Michco.com**

By Fax: (517) 702-2041

By Voice: Use numbers above.

Serving the Cleaning Industry Since 1922

Notice: All copyrighted material remains property of original owners, all trademarks are property of respective owners. Manuals are subject to Manufacturer's reproduction limitations. Originals or reproductions were provided by manufacturers through a request. We make no warranty as to the correctness of information provided in this document and you assume all risk. By placing these manuals on line we are not declaring our corporation to be an manufacturer authorized dealer or provider, please check our web site for authorized manufacturers we represent.



LINEVACER ASSEMBLY

No.	Product Name	Qty
1	104276 Latch Cap w/Cuff (Black)	1 ea.
2	100291 Intercept Micro Filter	10/pk
3	100565 Micro Cloth Filter	1 ea.
4	100286 Top or Bottom Cap Latch Set: 3 Latches, 3 Locks w/6 Fastening Rivets, 6 Washers	1 set
5	102604 Cord Holder	1 ea.
6	101737 Carry Handle w/Rivet and Washer Set	1 set
7	100356 Shoulder Strap Assembly (includes: #7a, 7b, 7c)	1 set
7a	100358 Shoulder Strap Plastic Adjustment (Top)	1 ea.
7b	100357 Shoulder Strap Plastic Adjustment (Bottom)	1 ea.
7c	103627 Sternum Strap Buckles (Latch and Keeper)	1 set
8	105046 Backplate (includes: #9)	1 ea.
9	100375 Barrel Nut Connection Set for Backplate (Replacement)	1 set
10	100374 Backplate Connection Set: 4 Screws w/Washers, Stand Offs	1 set
11	106719 Waist Belt Keeper and Latch	1 ea.
12	100359 Waist Belt (includes: #11)	1 ea.
	100354 Strap Assembly Complete (includes: #7, 12)	1 set
	103166 Backplate System Complete (includes: #6, 7, 8, 10, 12)	1 set
13	100641 Power Cord (18" 14/3) Assembly Complete	1 set
	100299 15' Cart power Supply Cord Complete w/Crimps (100279, 100282)	1 set
14	101610 Switch Cord Assembly 120V (includes: #14, 15, 16)	1 set
	101714 Switch Cord w/Crimps	1 ea.
	101716 18" Switch Cord Assembly Complete 120V	1 set
15	101472 Switch Box w/Velcro and New Lamb Switch	1 set
	106287 Switch Box w/Velcro and Screws	1 ea.
16	106066 On/Off Switch (must use with #106287)	1 ea.
17	104275 ULPA Filter Assembly Complete w/Bottom Cap (100280, 100282)	1 set
18	104274 HEPA Filter Assembly Complete w/Bottom Cap (100277, 100279)	1 set
19	100335 Motor Compression Ring w/Screws	1 set
	100378 Compression Ring Screw Set: 4 Screws	1 set
20	100014 Tetraseal	1 ea.
21	105697 Carbon Brush Set (Domel Motor)	1 set
	100424 Carbon Brush Set (Ametek Motor) (116311-00)	1 set
	106904 Carbon Brush Set (Ametek Motor) (122157-00)	1 set
22	100422 Motor/Fan (120 V) w/Crimps (Ametek Motor)	1 ea.
	100380 Motor Crimp Set: 4 female, 4 Male and a Ground Crimp Connector	1 set
	100379 Motor Ground, Wire Clamp Set w/Screws	1 set
23	100368 Motor Mounting System Set: 3 Well Nuts, 3 Bolts, 3 Washers, 3 Covers	1 set
24	100030 Dome Filter w/Foam Media	1 ea.
25	100343 Foam Filter Media for Dome Filter	1 ea.
26	103048 Static-Dissipating Hose w/Cuffs (Black)	1 ea.
27	101928 Replacement Double Swivel Elbow Cuff (Black)	1 ea.
28	100694 Replacement Swivel Cuff (Black) 1 1/2"	1 ea.
29	107294 Thermal Protector Replacement	1 ea.
30	105044 Motor Shroud/Diffuser w/Screw Set: 2 Screws	1 set
	101678 50' Extension Cord (Not Shown)	1 ea.