



## Electronic Service Manuals

This electronic document is provided as a service to our customers. We do not create the contents of the information contained in this document. Should you have detailed questions pertaining to the information contained in this document, you may contact Michco, or the manufacturer which provided the original information in this electronic deliverable. Michco's only part in this electronic deliverable was the electronic assembly process. By providing this manual on line we are not guaranteeing parts availability.

You may contact Michco through the following methods:

Phone (517) 484-9312 or (800) 331-3339

2011 N. High St. -- Lansing, Michigan -- 48906

Fax: (517) 484-9836

Email: [CustServe@Michco.com](mailto:CustServe@Michco.com)

Web site: [www.Michco.Com](http://www.Michco.Com)

Parts Web site: [www.FloorMachineParts.Com](http://www.FloorMachineParts.Com)

Order Parts on Line at:

**[www.FloorMachineParts.Com](http://www.FloorMachineParts.Com)**

Directly to Parts & Service:

By Email: **[Shop@Michco.com](mailto:Shop@Michco.com)**

By Fax: (517) 702-2041

By Voice: Use numbers above.

**Serving the Cleaning Industry Since 1922**

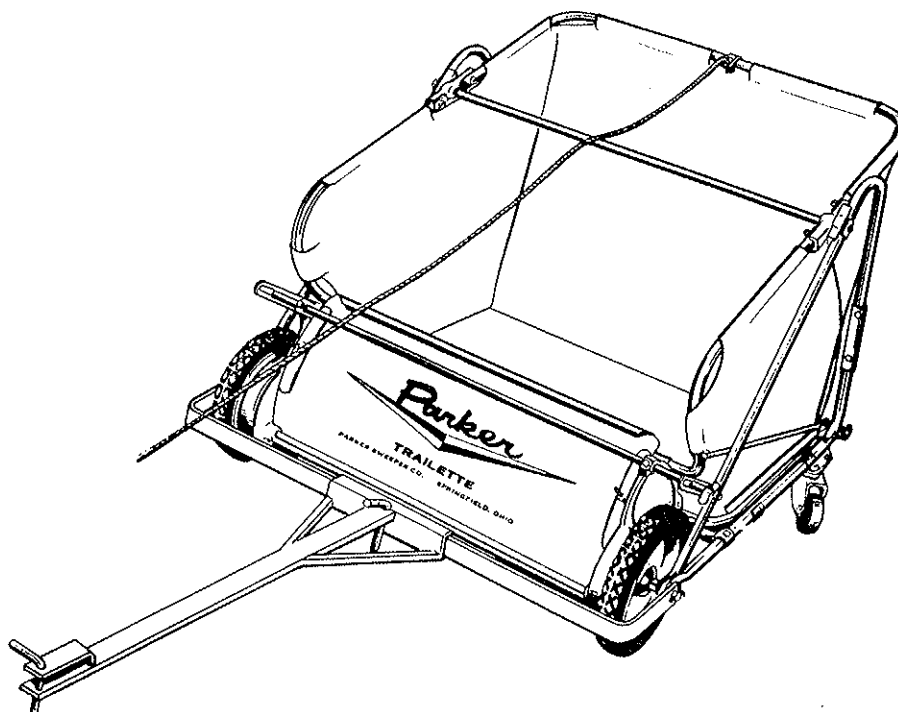
Notice: All copyrighted material remains property of original owners, all trademarks are property of respective owners. Manuals are subject to Manufacturer's reproduction limitations. Originals or reproductions were provided by manufacturers through a request. We make no warranty as to the correctness of information provided in this document and you assume all risk. By placing these manuals on line we are not declaring our corporation to be an manufacturer authorized dealer or provider, please check our web site for authorized manufacturers we represent.

# OWNERS GUIDE



# Parker

## TE- 7036 TRAILETTE 36" LAWN SWEEPER



**NOTICE:** These instructions were written to assist you in assembling your Lawn Sweeper quickly and correctly. Read instructions thoroughly before attempting assembly so that you are familiar with the complete procedure.

**PARKER SWEEPER COMPANY**

**BOX 1720**

**SPRINGFIELD, OHIO 45501-1728**

# ASSEMBLY INSTRUCTIONS

TE-7036

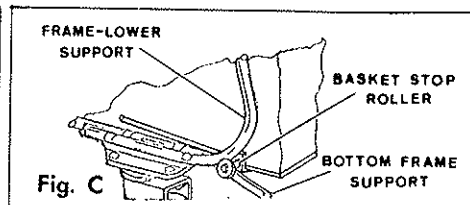
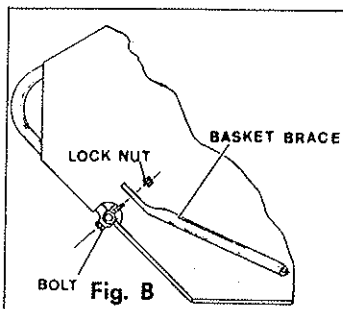
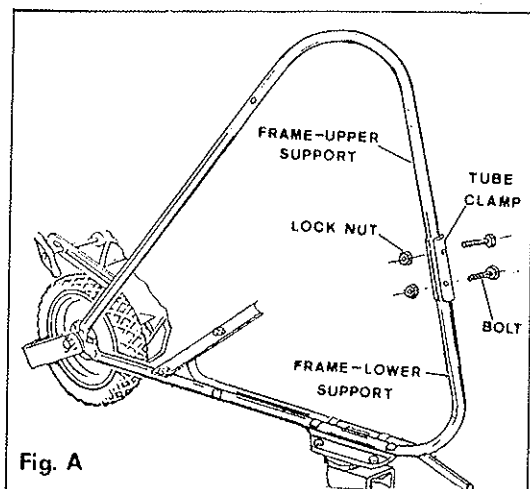


Fig. A

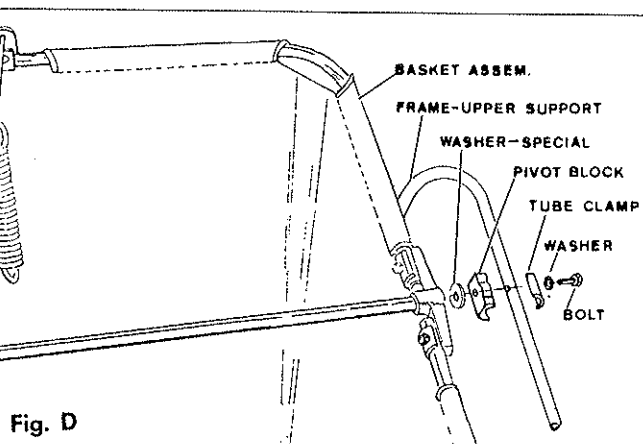


Fig. D

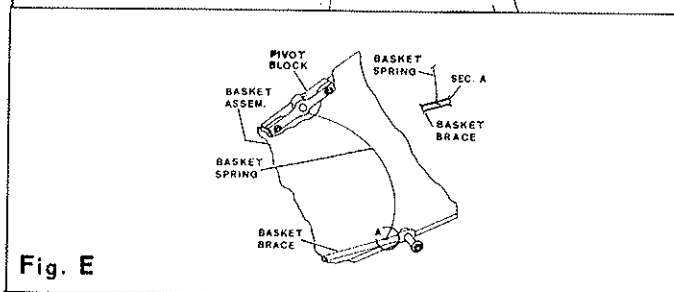


Fig. E

1. Lay carton on side so sweeper can be pulled from carton.
2. Lift basket assembly from sweeper and set aside.
3. Fig. A. Assemble frame-upper support and frame-lower support by using tube clamps, lock nuts and bolts as shown. (both sides)
4. Fig. B. Remove lock nut from basket leaving bolt in place. Place basket brace over bolt, replace lock nut and tighten. (both sides)
5. Fig. C. Place basket assembly on sweeper frame, see front page. Be sure basket stop roller is resting on bottom frame support. (both sides)
6. Fig. D. Remove bolt-washer-tube clamp-pivot block and washer-spec. from basket assembly. Replace as shown with frame-upper support between pivot block and tube clamp. (both sides)
7. Fig. E. Insert hook end of Basket Spring in Basket Brace as shown in Sec. A. Bend Spring as shown and insert top end in the hole on the under side of the Pivot Block. (both sides)
8. Inspect all nuts and cap screws and tighten if necessary. Check alignment of brush clamps. Tighten cap screw to 8 ft. pounds max. If necessary. (8 lb. pull at end of 12" handle) Do not strip threads in brush bracket.
9. See Fig. 4 for Hitch Assembly.

## OPERATING INSTRUCTIONS

**BRUSH HEIGHT ADJUSTMENT.** Loosen large wing nut, Ref. No. 24, Fig. 2. To raise brushes to extreme height, pull sweeping unit forward as far as slots in brush adjustment brackets, Ref. No. 1, Fig. 2, will permit. To lower brushes to lowest position, push sweeping unit backward as far as slots will permit. Secure wing nut when desired brush adjustment is obtained.

**HOOD HEIGHT ADJUSTMENT.** Loosen two wing nuts, Ref. No. 4, Fig. 1, and adjust hood, Ref. No. 6, to desired height. Retighten wing nuts.

1. For grass clippings or leaves, adjust hood and brushes at highest position. After trial run on lawn, should the settings be too high, lower slightly and try again until correct setting is found. Brush life may be prolonged by adjusting so contact with ground is light. The lighter the contact, the longer the wear and easier to pull.

2. For patio, sidewalk and driveway sweeping, adjust hood to bottom position. The hood is in correct position when it does not drag or throw sweepings ahead of sweeper. Also adjust brushes so they just contact cement.

**NOTE: IF SWEEPER PULLS HARD, THE BRUSHES OR HOOD ARE SET TOO LOW.**

**BASKET DUMPING.** The load is dumped from basket by pulling basket forward with rope, causing basket to pivot into a semi-inverted position. When load is discharged, allow rope and basket to return to its normal position.

**MAINTENANCE.** Place a few drops of oil into the oilers which are located on each side plate, Ref. Nos. 7 and 17 of Fig. 1, every time the machine is used. The wheels and casters should be lubricated at the same time. A drop or two of oil should also be applied occasionally to the basket pivot block, Ref. No. 26, Fig. 3.

**CARE AND REPLACEMENT OF BRUSHES.** The brushes used on this sweeper are made of the finest bristles that will give years of service if given proper care. Should they become bent from constant use, it is possible to straighten bristles by reversing the brushes on the reel shaft, so that the sweeping pressure is applied from the opposite side.

To reverse or replace brushes:

1. Turn sweeper upside down.
2. Remove cap screws & clamps Ref. No. 11 & 33 Fig. 1 which hold the brush strips to the reel shaft brackets. Reverse and replace the brush strip and clamps, then retighten the cap screws.

**CAUTION:** The brush fiber and basket material will burn if in contact with open flame. Avoid dumping basket over fire.

**BASKET CARE.** To insure longer basket life empty after each use.

# OPERATING INSTRUCTIONS

## CARE AND BRUSH REPLACEMENT

Should the bristles take a set from use, reverse the Brushes on the Reel Shaft. Never allow the Brush Bristles to remain in a bent position on any object for any length of time as they can take a set.

### TO REMOVE BRUSHES

Turn the Sweeper upside down on the ground. Notice the Stud has either 2 Swage Bumps or a Collar against the Brush Bracket holding it against the Reel Shaft.

Fig. F - Remove the Hex Nuts, Washers and Clamps from the Stud on the end having the 2 Swage or Collar. Remove the Brushes from the Brush Bracket slots, (4 places). Now remove the Hex Nuts, Washers and Clamps from the opposite end of the Studs. Do not remove the Speed Nuts or the Studs will fall away from the Reel Shaft (4 places).

### TO REPLACE BRUSHES

Fig. F - Turn the Reel Shaft so you can position the Brush Strips in the slots on the Brush Bracket that are being held on the Stud and Shaft by the Speed Nut. Position the Clamps, Washers and Hex Nuts, center the Brush Strips between the Side Plates, then tighten the Hex Nuts.

Turn the Reel Shaft so the Brushes are on the bottom side. Now place the Brush Strips in the slots on the Brush Brackets, on the top side. Position the Clamps, Washers and Hex Nuts. Center the Brush Strips between the Side Plates, then tighten the Hex Nuts.

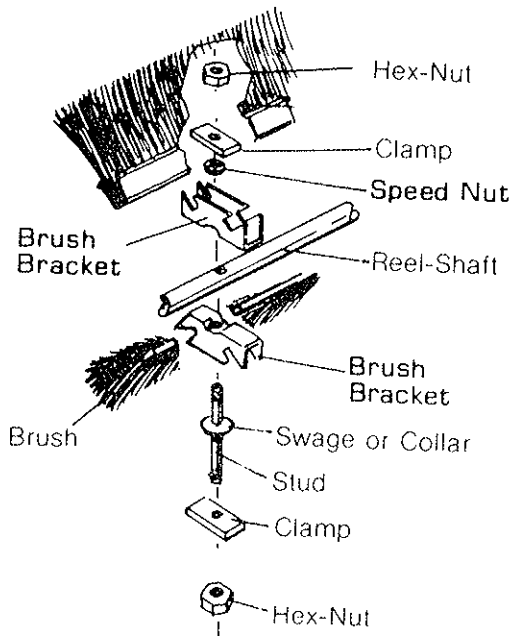


Figure F

**CAUTION:** The Brush Fiber and basket material will burn if in contact with open flame. Avoid dumping Basket over fire.

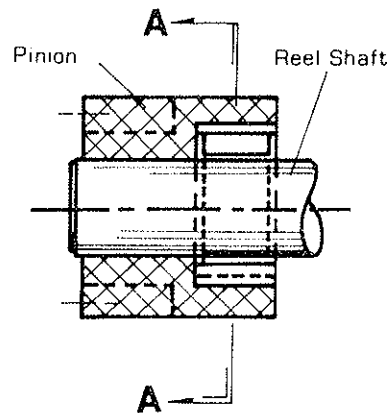
## LUBRICATION

Frequent lubrication of the Sweeper will lengthen the service life.

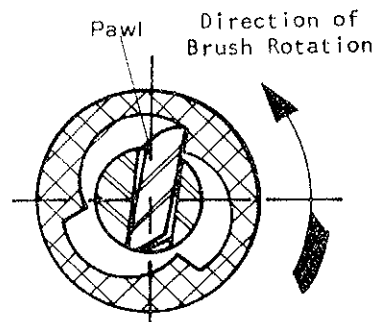
Place a few drops of oil in the oil holes located in the Hub of each Wheel and in each Side Plate, Ref. No. 7 & 17 of Fig. 1, also in the Swivel Bearings and Axle of the Casters every time the machine is used. A drop or two of oil should also be applied occasionally to the Basket Pivot Block, Ref. No. 26, Fig. 3.

Before using the Sweeper the first time each season, remove both Wheels and put a good grade of grease on the Pinion Gear and the gear of the Wheel.

Fig. G - Be sure the Pawls and Pinion Gears are in place correctly before putting the Wheels back on. Both the Left and Right Pawl must be turning the same direction. When the Pawls are installed correctly, the top of the Reel Shaft will rotate toward the operator when the Sweeper is pushed forward.



Left Hand Pinion Shown From Operators Position



### SEC A-A

Direction of Sweeper Travel

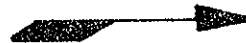


Figure G

# SWEEPER UNIT ASSEMBLY

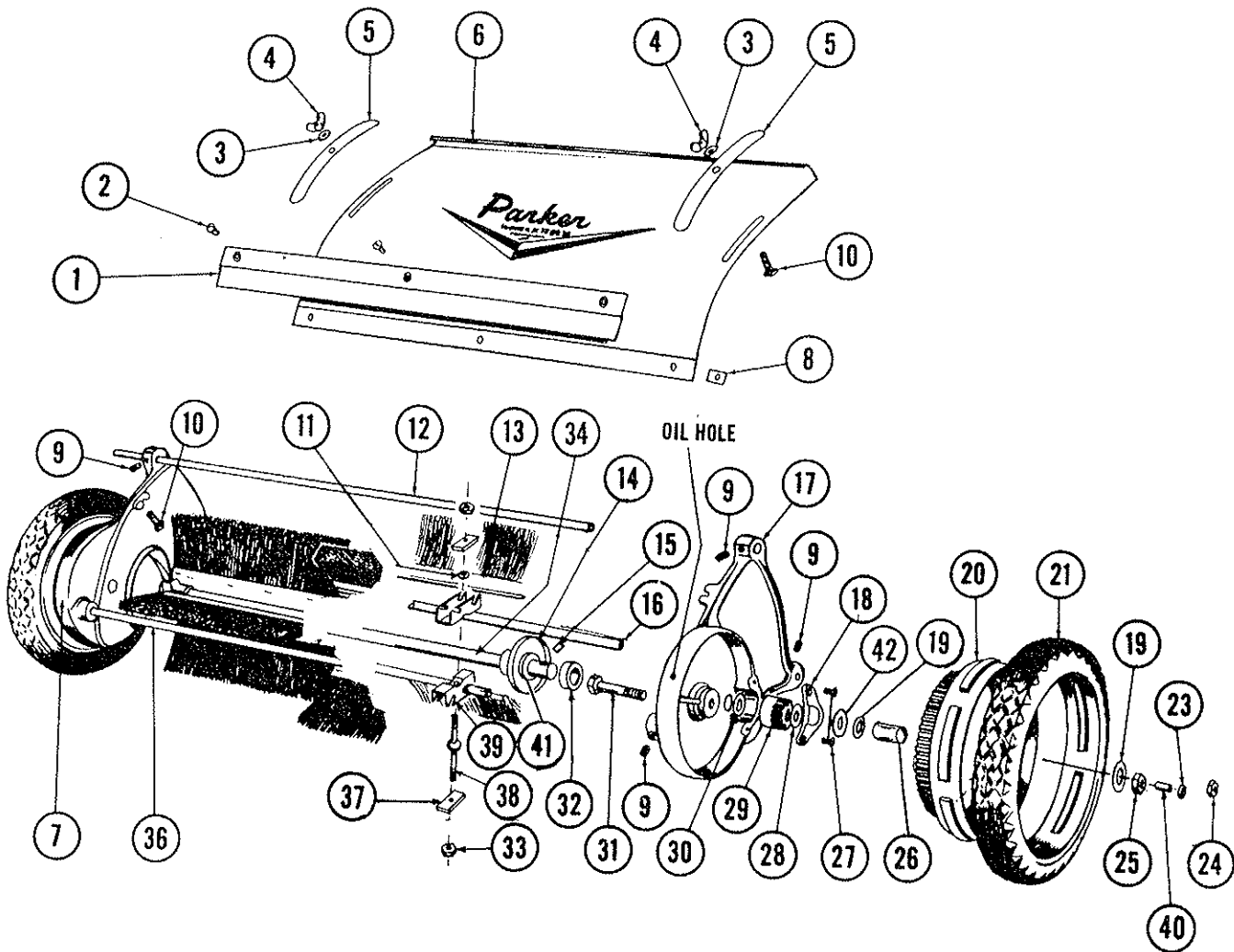


Figure 1

## PARTS LIST Figure 1

Ref. No.	Part No.	Qty. Per Unit	Description of Part	Ref. No.	Part No.	Qty. Per Unit	Description of Part
1	68-37-B	1	Hood Extension 90-29	22	<del>45-18-RC</del> *	1	Pinion-R.H. (Not Shown)
2	515-10-8	3	Screw-Rd. Hd. #10-24 x 1/2	23	945-816	2	Washer-Flat S.A.E. 1/2
3	945-516	3	Washer-Flat	24	368-816	2	Nut-Hex Lock 1/2 (thin)
4	351-516-20	2	Wing Nut 5/16-18 x 1 1/4	25	363-816	2	Nut-Hex Lock 1/2
5	49-11-A	2	Hood Clamp	26	58-06-A	2	Sleeve
6	<del>75-136-C</del>	1	Hood Assembly	27	505-416-8	4	Screw-Flat Hd. 1/4-20 x 1/2
7	<del>67-20-RF</del>	1	Side Plate-R.H.	28	946-1016-16	2	Washer-Fiber
8	346-10	3	Speed Nut #10	29	<del>45-19-LG</del> *	1	Pinion-L.H. (Shown)
9	560-C-516-10	6	Set Screw-Sq. Hd. 5/16-18 x 5/8	30	50-33-A	2	Washer-Special
10	65-516-12	2	Bolt-Hex Hd. 5/16-18 x 3/4	31	53-35-A	2	Axle
11	75-89-A	4	Retainer	32	68-60-A	2	Bearing
12	69-123-A	1	Adjusting Tube	33	362-416	8	Nut-Hex Lock
13	1200-17	8	Brush Assembly	34	<del>75-151-B</del>	1	Reel Shaft SA-788-D
14	74-166-B	2	Cover-Dust	35	936-416	8	Washer-Int. Tooth 1/4
15	<del>45-25-A</del> *	2	Pawl	36	68-33-A	2	Rod-Tie
16	<del>69-230-A</del>	1	Rod-Tie	37	69-04-A	8	Clamp-Brush x 1 1/4
17	<del>67-21-LF</del>	1	Side Plate-L.H. 76-339LF	38	74-16-A	4	Stud-Brush
18	<del>56-94-B</del>	2	Cover-Pinion 60-01-T3	39	74-13-C	8	Bracket-Brush
19	58-05-A	4	Washer-Special	40	68-44-A	2	Spacer-Axle
20	58-14-D-1	2	Wheel	41	55-161-A	2	Washer-Special
21	75-88-B	2	Tire	42	946-816-16	2	Washer-Fiber

\* SA-1583-B 1 PINION KIT  
CONTAINS # 15, 22 & 29

# FRAME ASSEMBLY

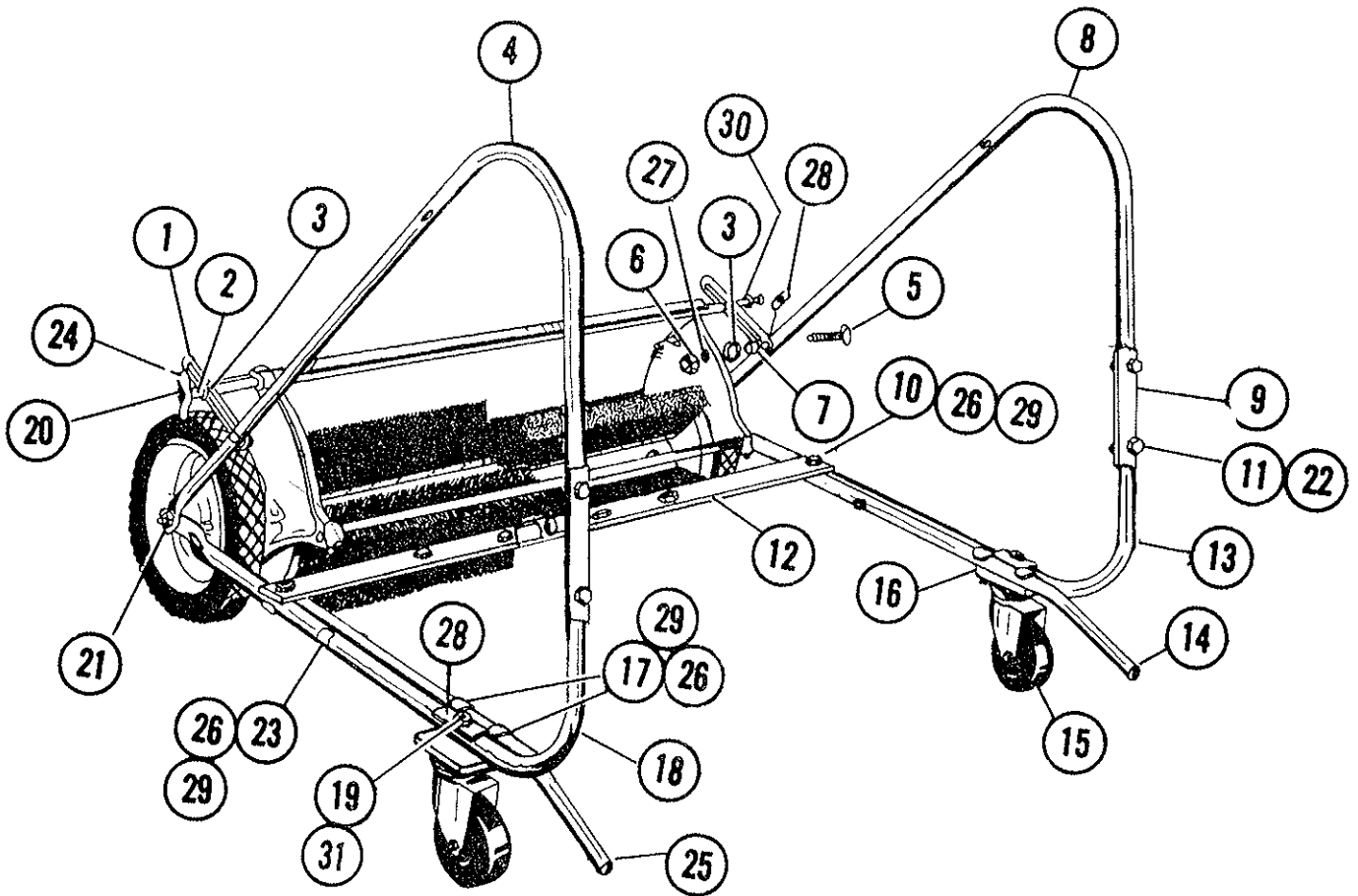


Figure 2

## PARTS LIST Figure 2

Ref. No.	Part No.	Qty. Per Unit	Description of Part	Ref. No.	Part No.	Qty. Per Unit	Description of Part
1	59-59-A	2	Bracket-Brush Adjusting	17	69-416-24	4	Bolt-Cont. Hd. $\frac{1}{4}$ -20 x $1\frac{1}{2}$
2	<del>53-08-A</del>	1	Spacer	18	<del>75-188-LC</del>	1	Lower Frame-L.H.
3	945-516	2	Washer-Flat- S.A.E. $\frac{5}{16}$	19	65-516-40	2	Bolt-Hex Hd. $\frac{5}{16}$ -18 x $2\frac{1}{2}$
4	69-112-LD	1	Upper Frame-L.H.	20	69-111-A	1	Bolt-Adjusting
5	69-516-24	2	Bolt-Cont. Hd. $\frac{5}{16}$ -18 x $1\frac{1}{2}$	21	368-816	2	Nut-Hex Jam- $\frac{1}{2}$ -20
6	335-516	4	Nut-Hex $\frac{5}{16}$ -18	22	65-416-20	4	Bolt-Hex Hd. $\frac{1}{4}$ -20 x $1\frac{1}{4}$
7	54-227-A	2	Spacer	23	69-416-28	2	Bolt-Cont. Hd. $\frac{1}{4}$ -20 x $1\frac{3}{4}$
8	69-113-RD	1	Upper Frame-R.H.	24	351-516-20	1	Wing Nut
9	58-124-C	4	Clamp-Handle	25	69-108-LD	1	Frame-Bottom Support L.H.
10	69-416-20	6	Bolt-Cont. Hd. $\frac{1}{4}$ -20 x $1\frac{1}{4}$	26	335-416	12	Nut-Hex $\frac{1}{4}$ -20
11	365-416	4	Nut-Lock Hex $\frac{1}{4}$ -20	27	936-516	2	Washer-Internal Tooth
12	<del>69-109-D</del>	1	Tie Bar	28	59-77-A	2	Clamp-Tube
13	<del>75-189-RC</del>	1	Lower Frame-R.H.	29	936-416	12	Washer-Internal Tooth $\frac{1}{4}$
14	69-107-RD	1	Frame-Bottom Support R.H.	30	945-616	1	Washer $\frac{3}{8}$
15	75-123-A	2	Caster Assembly	31	365-516	2	Nut-Hex Lock $\frac{5}{16}$ -18
16	<del>59-69-B</del>	2	Caster Plate				

# BASKET ASSEMBLY

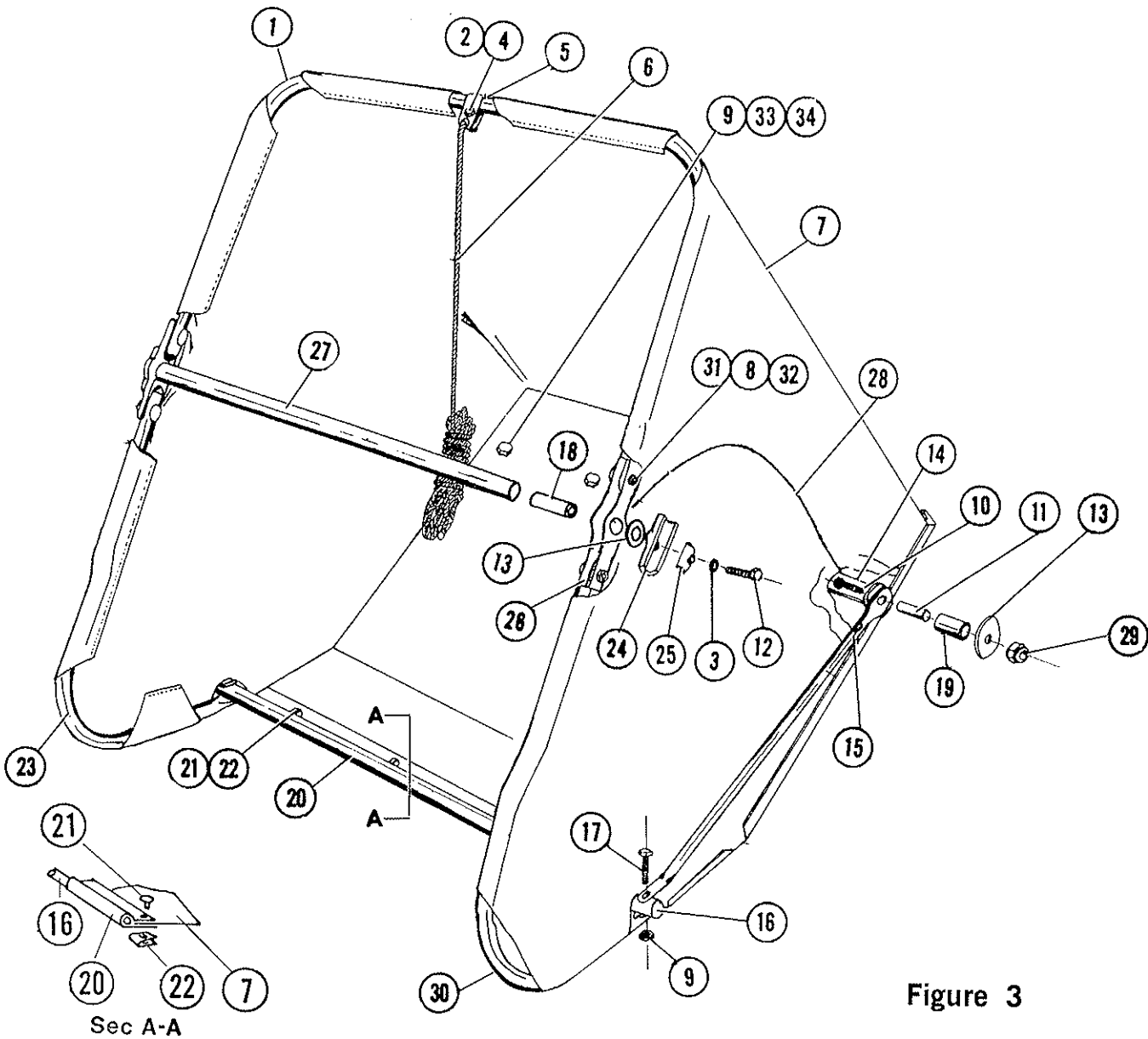


Figure 3

## PARTS LIST Figure 3

Ref. No.	Part No.	Qty. Per Unit	Description of Part	Ref. No.	Part No.	Qty. Per Unit	Description of Part
1	69-110-D	1	Frame-Rear Basket	18	<del>70-26-A</del>	2	Spacer Bushing
2	70-516-24	1	Bolt-Carriage $\frac{5}{16}$ -18 x $1\frac{1}{2}$	19	69-196-A	2	Stop Bumper
3	<del>936-516</del>	2	Washer-Int. Tooth Lock $\frac{5}{16}$	20	<del>69-106-D</del>	1	Clamp-Basket Bottom
4	365-516	1	Nut-Lock $\frac{5}{16}$ -18	21	<del>515-416-6</del>	5	Screw-Rd. Hd. $\frac{1}{4}$ -20 x $\frac{3}{8}$
5	59-60-A	1	Bracket <i>76-252-A</i>	22	346-416	5	Nut-Speed $\frac{1}{4}$
6	60-09-A	1	Rope	23	69-114-RF	1	Frame-Front Basket-R.H.
7	SA-239-F	1	Basket Sub. Assembly	24	<del>59-68-B</del>	2	Short Pivot Block <i>79-174-A</i>
8	69-416-20	4	Bolt-Cont. Hd. $\frac{1}{4}$ -20 x $1\frac{1}{4}$	25	59-77-A	2	Clamp-Tube
9	365-416	6	Nut-Lock $\frac{1}{4}$ -20	26	<del>59-62-B</del>	2	Long Pivot Block <i>79-112-13</i>
10	<del>65-616-40</del>	2	Bolt-Hex Head $\frac{3}{8}$ -16 x $2\frac{1}{2}$	27	<del>70-28-A</del>	1	Spreader-Tube Weld. <i>2A-1427-13</i>
11	63-291-A	2	Spacer	28	70-84-B	2	Basket Spring
12	<del>65-516-52</del>	2	Screw-Cap $\frac{5}{16}$ -18 x $3\frac{1}{4}$	29	365-616	2	Nut-Lock Hex $\frac{3}{8}$
13	<del>55-156-A</del>	4	Washer-Special <i>82-138-B-1</i>	30	69-115-LF	1	Frame-Front Basket-L.H.
14	<del>69-103-B</del>	1	Basket Stop	31	936-416	4	Washer-Int. Tooth $\frac{1}{4}$
15	<del>69-102-B</del>	2	Basket Brace	32	335-416	4	Nut-Hex Plain
16	<del>69-122-A</del>	1	Basket Bottom Support	33	945-416	4	Washer-Flat
17	65-416-24	2	Bolt Hex Hd. $\frac{1}{4}$ -20 x $1\frac{1}{2}$	34	65-416-12	4	Bolt-Hex Hd. $\frac{1}{4}$ -20 x $\frac{3}{4}$

# HITCH ASSEMBLY

## PARTS LIST Figure 4

Ref. No.	Part No.	Qty. Per Unit	Description of Part
1	75-40-B	1	Hitch Plate Assembly
2	75-32-B	1	Tongue Weldment
3	<del>74-75-A</del>	2	Pin-Clinch <i>81-14-A</i>
4	65-516-12	2	Bolt-Hex Hd. $\frac{5}{16}$ -18 x $\frac{3}{4}$
5	364-516	2	Nut-Hex Lock $\frac{5}{16}$ -18
6	75-134-B	1	Yoke

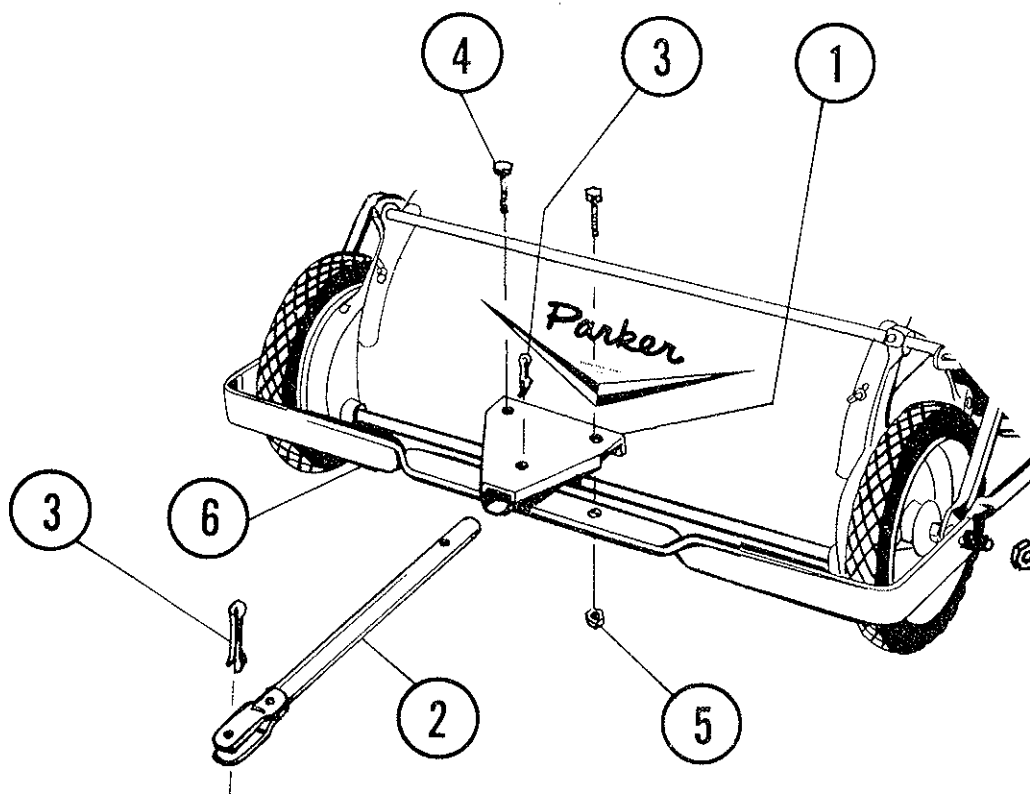


Figure 4

-Plate No. 292-

**ALWAYS GIVE THE FOLLOWING INFORMATION WHEN ORDERING REPAIR PARTS:**

- |                               |                        |
|-------------------------------|------------------------|
| 1. PART NUMBER (Not Ref. No.) | 3. DESCRIPTION OF PART |
| 2. QUANTITY NEEDED            | 4. MODEL No. TE-7636   |

If unable to obtain parts locally, write down above information and send to:  
**PARKER SWEEPER CO., BOX 1728, SPRINGFIELD, OHIO 45501**

Your unit is right hand (R.H.) or left hand (L.H.) as you stand behind it.

**IMPORTANT**

