



Electronic Service Manuals

This electronic document is provided as a service to our customers. We do not create the contents of the information contained in this document. Should you have detailed questions pertaining to the information contained in this document, you may contact Michco, or the manufacturer which provided the original information in this electronic deliverable. Michco's only part in this electronic deliverable was the electronic assembly process. By providing this manual on line we are not guaranteeing parts availability.

You may contact Michco through the following methods:

Phone (517) 484-9312 or (800) 331-3339

2011 N. High St. -- Lansing, Michigan -- 48906

Fax: (517) 484-9836

Email: CustServe@Michco.com

Web site: www.Michco.Com

Parts Web site: www.FloorMachineParts.Com

Order Parts on Line at:

www.FloorMachineParts.Com

Directly to Parts & Service:

By Email: **Shop@Michco.com**

By Fax: (517) 702-2041

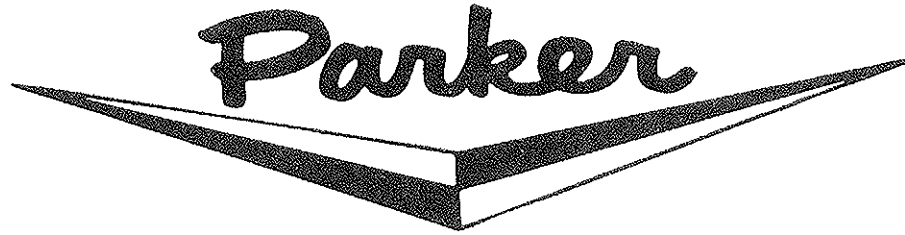
By Voice: Use numbers above.

Serving the Cleaning Industry Since 1922

Notice: All copyrighted material remains property of original owners, all trademarks are property of respective owners. Manuals are subject to Manufacturer's reproduction limitations. Originals or reproductions were provided by manufacturers through a request. We make no warranty as to the correctness of information provided in this document and you assume all risk. By placing these manuals on line we are not declaring our corporation to be an manufacturer authorized dealer or provider, please check our web site for authorized manufacturers we represent.

INSTRUCTIONS AND PARTS LIST

FOR



Lawn Beauty®

Spreaders

Models LB-6830 and LB-6830-TH

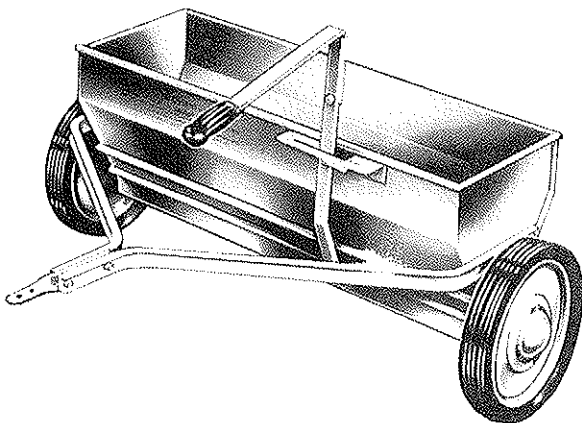
LB-6830-S and LB-6830-THS

Note: Suffix "S" indicates Stainless Steel Hopper Bottom and Slide. Also Stainless Steel Slide is optional for Standard Models at additional cost.

**Patented Cam Action Agitator
and Exclusive Rate Control Dial**

**Spreads ... All Types of Chemical and Organic Fertilizers,
Grass Seeds, Lime, Granular and Pelletized Material**

Accurately, Uniformly, in Adequate Quantities



NOTICE: These instructions were written to assist you in assembling and operating your *Lawn Beauty* quickly and correctly. Read instructions thoroughly before attempting assembly and/or operating machine so that you are familiar with the complete procedure and safety precautions.

PARKER SWEEPER COMPANY

BOX 720

SPRINGFIELD, OHIO 45501

ADJUSTMENT

How To Adjust . . . Models LB-6830 LB-6830-S

See Fig. 1

Set rate control dial 10 so that position No. 19 is at the top. Tighten the knob and turn handle forward until regulator cam 9 contacts dial at position No. 19. With dial and regulator cam in this position, adjust nuts on each side of clip 7 so that bottom slide 8 moves to exact maximum rectangular opening. At this point, tighten both nuts securely.

How To Adjust . . . Models LB-6830-TH LB-6830-THS

See Fig. 2

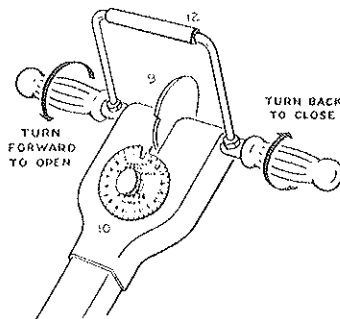
Loosen knob and move slide adjusting plate 9 to position No. 19. Tighten knob. Loosen bolts holding regulator plate 3 to hopper. Move slide lever so that openings in the bottom slide 4 form EXACT RECTANGULAR OPENINGS with the openings in the hopper bottom; hold slide lever in this position and move regulator plate so that slide adjusting plate rests against the slide lever. Tighten very securely bolts holding regulator plate to hopper.

OPERATION

How To Operate . . . Models LB-6830 LB-6830-S

Determine rate setting by consulting either the Application Chart or the chart on the handle. Rate adjustment is made by loosening the knob on the rate dial and rotating dial until desired number is in line with regulator cam 9. Tighten the knob. Close spreader before filling hopper. Hold handles forward while spreading.

Set baffle inside hopper at best height for material being spread. Lower position for free flowing material. Upper positions for organic fertilizer, peat moss, etc.



How To Operate . . . Models LB-6830-TH LB-6830-THS

Determine rate setting by consulting either the Application Chart or the handy chart on hopper. Rate adjustment is made by loosening the knob on the slide adjusting plate and moving the plate to the desired number. Tighten the knob. Close spreader before filling hopper. Set baffle inside hopper at best height for material being spread. Lower position for free flowing material. Upper positions for organic fertilizer, peat moss, etc.

CLEAN THOROUGHLY AFTER EACH USE.

Your Lawn Beauty spreader is a precision-built machine designed to give you years of satisfactory service. As with all quality machines

it does require care — a few minutes servicing after each use will assure you a perfect spreader for perfect spreading.

TO REMOVE BOTTOM SLIDE & CLEAN & OIL

Models LB-6830 & LB-6830-S Fig. 1

Note: The large washer under dial prevents accidental dropping of the slide and it may be discarded. After washer is removed, proceed as follows:

Loosen the knob on the rate dial. Rotate so that the dial slot lines up with regulator cam. Turn handle forward so that cam enters cleanout slot. Disengage slide from bottom of hopper. Use dry cloth to clean inside and outside of hopper and bottom slide. Cover inside of slide and outside

bottom of hopper with a coating of light oil to protect against corrosion. Stand spreader on ends and oil wheel bearings from outside of hopper. Assemble bottom slide to hopper by engaging rivets in keyhole slots. ALL RIVETS MUST BE ENGAGED OR SLIDE WILL NOT FUNCTION. Turn handle backward to close. Rotate cleanout slot in dial away from cam as shown above.

Models LB-6830-TH & LB-6830-THS Fig. 2

Remove the knob from the slide adjusting plate 9 and remove plate and retainer from regulator plate 3. Move slide lever 2 over until the holes in the keyhole slots in the bottom slide 4 are immediately over the rivets in the hopper. Disengage slide from bottom of hopper. Use dry cloth to clean inside and outside of hopper and bottom slide. Cover inside of slide and outside bottom of hopper with a coating of light oil to

protect against corrosion. Stand spreader on ends and oil wheel bearings from outside of hopper. Assemble bottom slide to hopper by engaging rivets in keyhole slots. ALL RIVETS MUST BE ENGAGED OR SLIDE WILL NOT FUNCTION. Move slide lever back to position No. 1. Replace slide adjusting plate, retainer and knob.

Lawn Beauty IS SIMPLE AND EASY TO ASSEMBLE - ADJUST - OPERATE - CLEAN

How To Assemble . . . Models LB-6830 & LB-6830-S

1. Handle Brace 2 fits notch B. Use the 3/4" x 1/4" bolt for bolting handle brace to hopper. (Lockwasher and nuts go on inside of hopper.)
2. Attach the other handle brace in the same manner.
3. Place Handle 4 between braces and bolt with one 3 5/8" x 1/4" bolt through lower hole and one 3 1/2" x 1/4" bolt through upper hole.
4. Fasten Leg 6 to hopper with three 1/2" x 1/4" bolts and to studs on handle with two 1/4" - 20 nuts. Use Lockwashers.
5. Slide Connecting Rod 5 through holes H in leg (do not insert into Angle 7—see Step 6). Turn handle grips forward and insert elbow of connecting rod through hole in Cam 9 and fasten with washer and cotter pin.
6. Screw one 5/16" - 18 nut one inch up on connecting rod and turn handle grips backward so that rod enters hole in Angle 7 and screw on second 5/16" - 18 nut.
7. Insert Handle Lever 12 through handle bar and fasten with lock washer and nuts on each side of bar.
8. See How To Adjust.

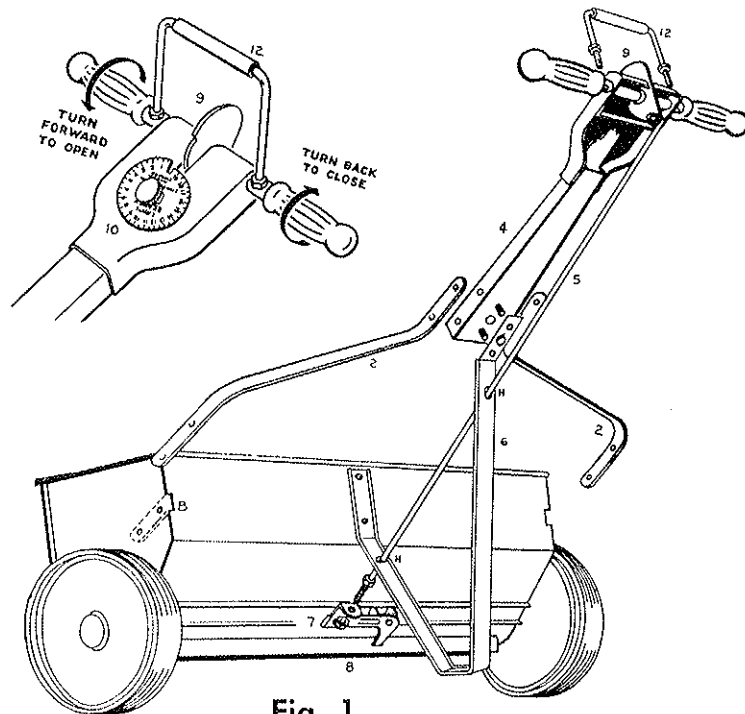


Fig. 1

How To Assemble . . . Models LB-6830-TH & LB-6830-THS

1. Rest front of hopper on floor. (Front panel has the Lawn Beauty name screened on.)
2. Insert Slide Lever 2 into slot of Regulator Plate 3.
3. Engage tip of slide lever into slot in Bottom Slide 4 and fasten Slide Lever Angle 5 to hopper using two 10 - 24 x 3/8" bolts with attached lockwashers. Nuts go on inside of hopper.
4. Fasten Regulator Plate 3 to hopper using two 1/4-20 x 1/2" bolts. Nuts and lockwashers go on inside of hopper. Hand tighten nuts and bolts.
5. Attach Handle Extension 6 to slide lever using two 1/4 - 20 x 3/4" bolts.
6. Attach Brace 7 through notch B to hopper using four 1/4 - 20 x 1/2" bolts. Lockwashers and nuts on inside of hopper.
7. Attach Connecting Bar 8 to braces using two 1/4-20 x 3/4" bolts.
8. See How To Adjust.

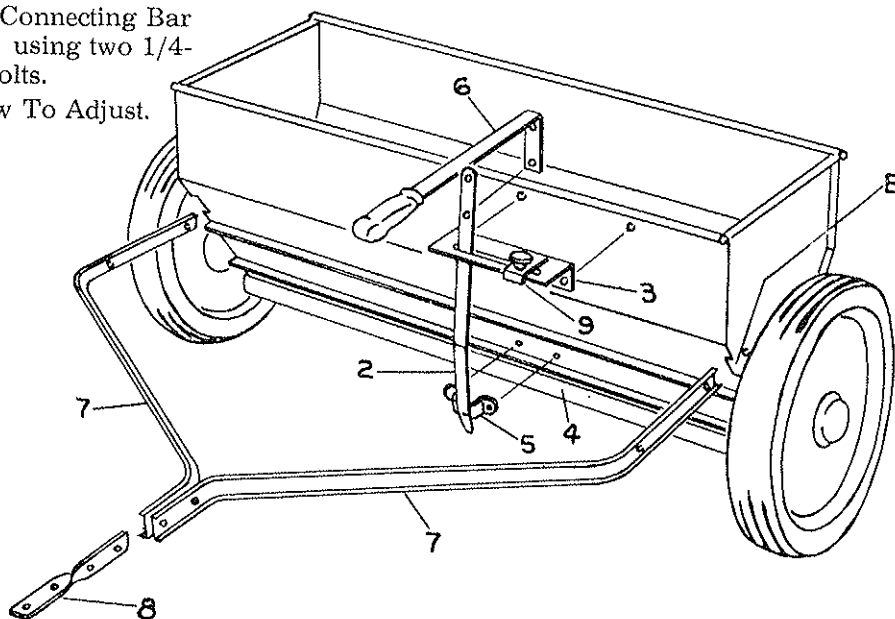


Fig. 2

Replacement Parts Lists For Models LB-6830, LB-6830-S, LB-6830-TH, LB-6830-THS

| NAME of PART | QUAN. | PART NUMBERS LISTED UNDER EACH MODEL | | | | | | | |
|----------------------------|--------------------|--------------------------------------|---------------|------------|---------------|------------|---------------|-------------|---------------|
| | | LB-6830 | | LB-6830-S | | LB-6830-TH | | LB-6830-THS | |
| | | PARKER No. | SCHNEIDER No. | PARKER No. | SCHNEIDER No. | PARKER No. | SCHNEIDER No. | PARKER No. | SCHNEIDER No. |
| 1 End Plate | 2 | 67-205 | 6 | 67-205 | 6 | 67-205 | 6 | 67-205 | 6 |
| 2 Oilite End Brg. | 2 | 67-635 | 20 | 67-635 | 20 | 67-635 | 20 | 67-635 | 20 |
| 3 Left End Spacer | 1 | 67-215-L | 60 | 67-215-L | 60 | 67-215-L | 60 | 67-215-L | 60 |
| 4 Shaft Washer Left End | 1 | 67-649 | 200 | 67-649 | 200 | 67-649 | 200 | 67-649 | 200 |
| 5 Right End Spacer | 1 | 67-214-R | 51 | 67-214-R | 51 | 67-214-R | 51 | 67-214-R | 51 |
| 6 Shaft Washer Right End | 1 | 67-527 | 628 | 67-527 | 628 | 67-527 | 628 | 67-527 | 628 |
| 7 Hub Cap | 2 | 67-213 | 31 | 67-213 | 31 | 67-213 | 31 | 67-213 | 31 |
| 8 Wheel | 2 | 67-694 | P | 67-694 | P | 67-694 | P | 67-694 | P |
| 9 Agitator Rod | 1 | 67-586 | 755 | 67-586 | 755 | 67-586 | 755 | 67-586 | 755 |
| 10 Spring Clip | 4 | 67-216 | 61 | 67-216 | 61 | 67-216 | 61 | 67-216 | 61 |
| 11 Agitator | 1 | 67-581 | A-30 | 67-581 | A-30 | 67-581 | A-30 | 67-581 | A-30 |
| 12 Knob | 1 | 67-618 | 178 | 67-618 | 178 | 67-618 | 178 | 67-618 | 178 |
| 13 Baffle | 1 | 67-587 | 756 | 67-587 | 756 | 67-587 | 756 | 67-587 | 756 |
| 14 Rubber Grip | 2-Fig. 3, 1-Fig. 4 | 67-614 | 32 | 67-614 | 32 | 67-614 | 32 | 67-614 | 32 |
| 15 Hopper Weldment | 1 | 67-691 | B-30 | 67-770 | CD-30 | 67-700 | E-30 | 67-773 | GH-30 |
| 16 Slide Weldment | 1 | 67-692 | M | 67-772 | N | 67-692 | M | 67-775 | M |
| 17 Connecting Bar | 1 | | | | | 67-599 | 802 | 67-599 | 802 |
| 18 Connecting Brace | 2 | | | | | 67-600 | 803 | 67-600 | 803 |
| 19 Slide Adj. Plate | 1 | | | | | 67-604 | 807 | 67-604 | 807 |
| 20 Regulator Plate or Dial | 1 | 67-331 | 168 | 67-331 | 168 | 67-602 | 805 | 67-602 | 805 |
| 21 Slide Lever & Bracket | 1 | 67-667 | T | 67-667 | T | 67-701 | V | 67-701 | V |
| 22 Weld Plate | 1 | | | | | 67-702 | U | 67-702 | U |
| 23 Handle Extension | 1 | | | | | 67-605 | 808 | 67-605 | 808 |
| 24 External Lock Washer | 1 | | | | | 937-516 | 810 | 937-516 | 810 |
| 25 Handle | 1 | 67-696 | KA | 67-696 | KA | | | | |
| 26 Regulator Cam | 1 | 67-695 | 0 | 67-695 | 0 | | | | |
| 27 Handle Bar | 1 | 67-325 | 21-1 | 67-325 | 21-1 | | | | |
| 28 Handle Lever | 1 | 67-329 | 138 | 67-329 | 138 | | | | |
| 29 Connecting Rod | 1 | 67-588 | 757 | 67-588 | 757 | | | | |
| 30 Handle Brace | 2 | 67-594 | 763 | 67-594 | 763 | | | | |
| 31 Leg | 1 | 67-590 | 759 | 67-590 | 759 | | | | |
| 32 Bag of Bolts For Mach. | 1 | 67-777-A | | 67-777-A | | 67-776-A | | 67-776-A | |

Fig. 3

Fig. 4

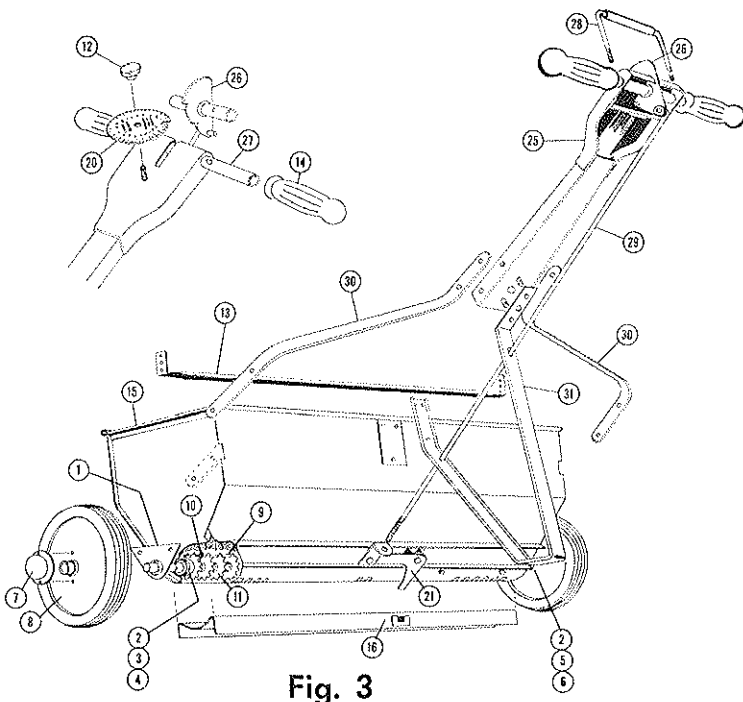


Fig. 3

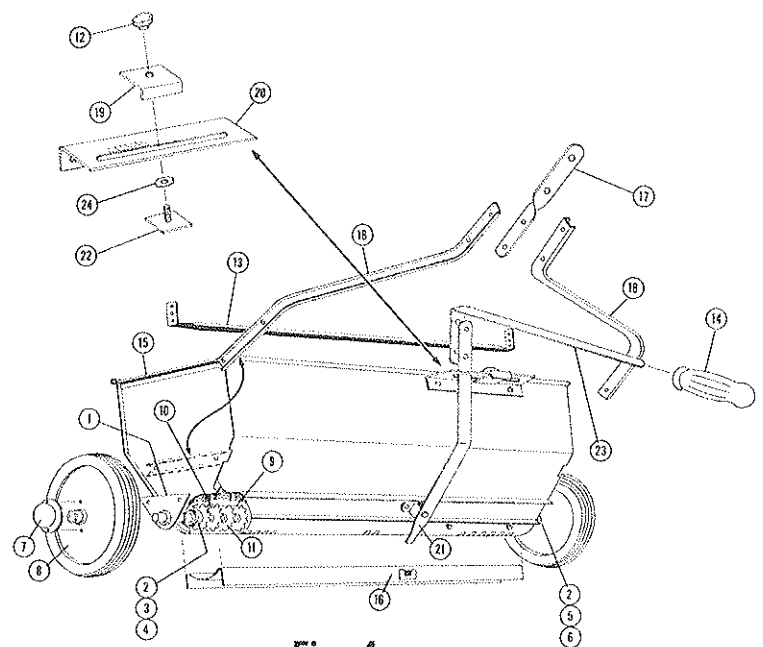
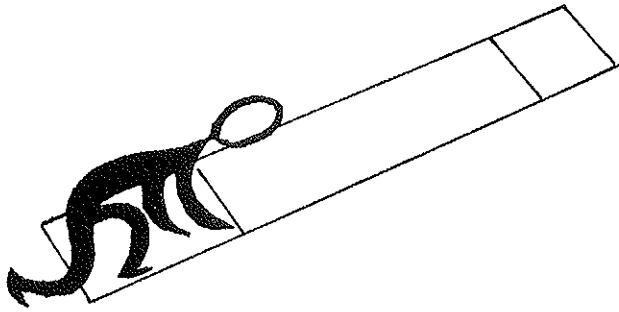


Fig. 4

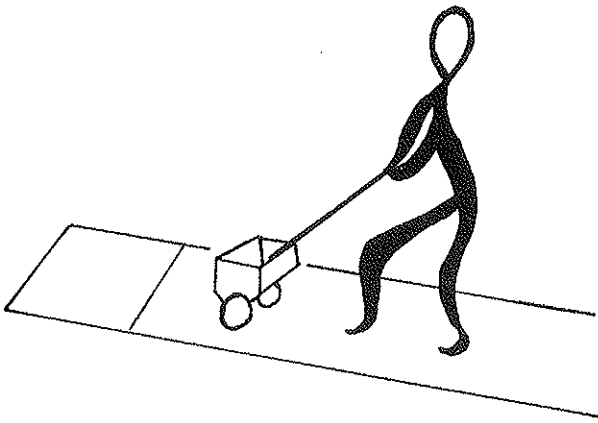
If you are unable to find a dial setting in your chart for the material you want to spread, you may determine the correct setting, by establishing the manufacturers recommended rate of application in pounds per 1000 square feet.

HOW TO FIND A DIAL SETTING NUMBER FOR YOUR LAWN BEAUTY SPREADER



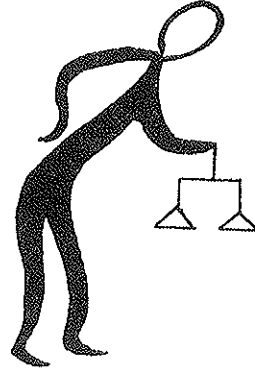
1. First obtain a piece of wrapping paper wider than your spreader and at least five feet longer than the test strip length indicated in paragraph 8 below.
Set this down on a level area.

2. Place on the paper two heavy marks the distance apart required for your size spreader.



3. Pelletized and granular fertilizers are usually applied in heavier rates per thousand square feet . . . an arbitrary dial number of 7 could be chosen for your first test for a product such as this. Many insecticides are applied in lighter rates so a good arbitrary dial setting to use for these would be 5.

4. Make one pass over the test-strip, opening the slide at the first mark, and closing it securely at the second mark.



5. Gather up the material just spread and weigh it.
6. Multiply the weight by 2 1/2; the result will be the rate in pounds per thousand square feet.

Example

Weight of material spread in one pass . . 4 oz.
Multiply 4 x 2 1/2 to equal 10 pounds,
per thousand square feet.

7. If the rate per thousand square feet arrived at in step 6 above is different than that desired, additional passes will be required using higher or lower dial numbers; if it is too high, use a lower dial number and try another pass; if it is too low, use a higher number for an additional pass. It may take a number of trials to find the exact rate desired.

8. Test Strip Lengths:

| Model No. | Length |
|-----------|--------|
| LB-6830 | 10'-6" |

ALWAYS GIVE THE FOLLOWING INFORMATION WHEN ORDERING REPAIR PARTS

Order all parts from your nearest dealer.

1. Part Number, Quantity.
 2. Model Number
- Right hand (R.H.) or left hand (L.H.) is determined by facing the Hitch or Handle side on all models.

*Standard hardware items may be purchased locally.

