



## Electronic Service Manuals

This electronic document is provided as a service to our customers. We do not create the contents of the information contained in this document. Should you have detailed questions pertaining to the information contained in this document, you may contact Michco, or the manufacturer which provided the original information in this electronic deliverable. Michco's only part in this electronic deliverable was the electronic assembly process. By providing this manual on line we are not guaranteeing parts availability.

You may contact Michco through the following methods:

Phone (517) 484-9312 or (800) 331-3339

2011 N. High St. -- Lansing, Michigan -- 48906

Fax: (517) 484-9836

Email: [CustServe@Michco.com](mailto:CustServe@Michco.com)

Web site: [www.Michco.Com](http://www.Michco.Com)

Parts Web site: [www.FloorMachineParts.Com](http://www.FloorMachineParts.Com)

Order Parts on Line at:

**[www.FloorMachineParts.Com](http://www.FloorMachineParts.Com)**

Directly to Parts & Service:

By Email: **[Shop@Michco.com](mailto:Shop@Michco.com)**

By Fax: (517) 702-2041

By Voice: Use numbers above.

**Serving the Cleaning Industry Since 1922**

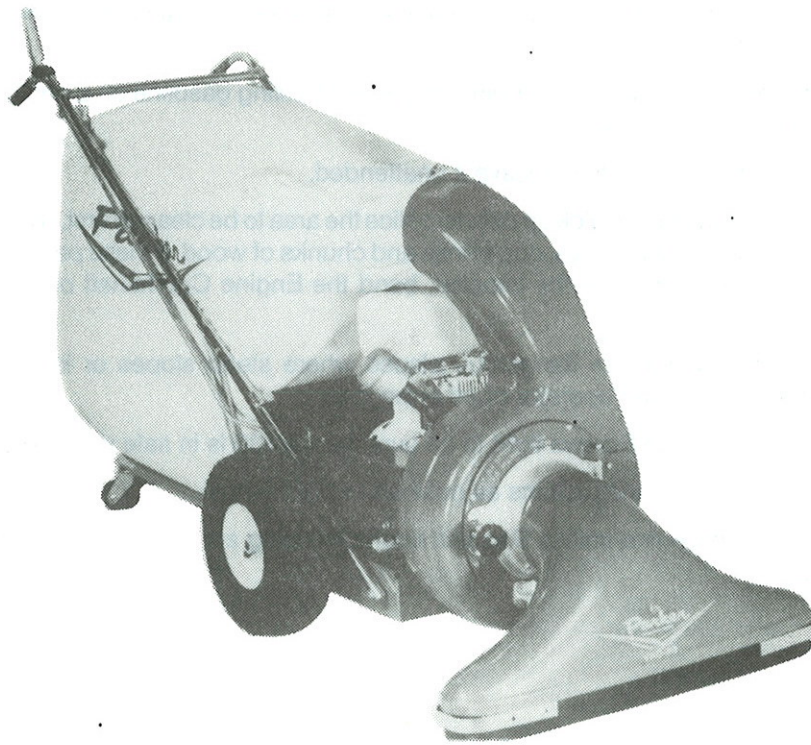
Notice: All copyrighted material remains property of original owners, all trademarks are property of respective owners. Manuals are subject to Manufacturer's reproduction limitations. Originals or reproductions were provided by manufacturers through a request. We make no warranty as to the correctness of information provided in this document and you assume all risk. By placing these manuals on line we are not declaring our corporation to be an manufacturer authorized dealer or provider, please check our web site for authorized manufacturers we represent.

# OWNER'S GUIDE



## VACUUM SWEEPER VAC-35 GASOLINE AND LP ENGINE

MODEL NO. PV-8308-K-SP, 8308-K-SP-LP



**READ THESE INSTRUCTIONS  
BEFORE SETTING UP AND OPERATING MACHINE**

**BE SAFE. PROTECT YOUR FAMILY, YOUR FRIENDS, YOURSELF.  
OBSERVE ALL SAFETY INSTRUCTIONS.**

**PARKER SWEEPER COMPANY**

**Box 1728**

**Springfield, Ohio 45501-1728**

# TO THE OWNER

These instructions were written to assist you in the assembly and operation of your Vac-35. **READ THE INSTRUCTIONS** thoroughly **BEFORE** attempting to assemble and operate the machine so that you are familiar with the complete procedure and the safety precautions.

## RULES FOR SAFE OPERATION



The following safety precautions are suggested to prevent damage to the equipment or injury to the operator or nearby persons.

1. Do not allow anyone to operate the Vac-35 without proper instructions.
2. Do not permit children to operate the Vac-35.
3. Do not sweep too close to fire. Ingesting hot ashes or cigarette butts will ignite the Bag.
4. Stop the Engine before reaching into the Intake Housing or Discharge Chute to dislodge sticks or other debris.
5. Stop the Engine before attempting to make any adjustment or performing any maintenance work on the Vac-35.
6. When working on the Engine, always remove the Spark Plug Wire from the Engine and attach it to the V shaped Clip on the Engine head.
7. Do not run the Engine in an enclosed area. Exhaust gases contain carbon monoxide, an odorless and deadly poison.
8. Do not fill the Fuel Tank while the Engine is running. Spilling gasoline on a hot Engine may cause a fire or an explosion.
9. While machine is running, do not leave it unattended.
10. Before using the machine to pick up debris, police the area to be cleaned first, picking up any large objects such as glass, toys, dog bones and chunks of wood. If these pass through the machine, they could damage the Impeller, bend the Engine Crankshaft or put a hole in the Bag.
11. Avoid using the machine in dangerous places where steep slopes or loose debris will endanger the safety of the operator or other people.
12. Keep all Nuts, Bolts and Screws tight to be sure the Vac-35 is in safe working condition.
13. Follow the maintenance instructions as outlined in this manual.
14. Do not start or run Engine unless Bag and Intake Housing are properly secured as injury may result.

## IMPORTANT

### ALWAYS GIVE THE FOLLOWING INFORMATION WHEN ORDERING REPAIR PARTS:

- |                               |                        |
|-------------------------------|------------------------|
| 1. Part Number (Not Ref. No.) | 3. Description of Part |
| 2. Quantity Needed            | 4. Model No. of Vac-35 |

If unable to obtain parts locally, write down above information and send to:  
**PARKER SWEEPER CO., BOX 1728, SPRINGFIELD, OHIO 45501**

Your unit is right hand (R.H.) or left hand (L.H.) as you stand behind it.

# ASSEMBLY INSTRUCTIONS

**YOUR SAFETY IS OUR CONCERN. READ ALL SAFETY RULES AND OPERATING INSTRUCTIONS BEFORE ATTEMPTING TO OPERATE THIS EQUIPMENT. FAILURE TO FOLLOW SAFETY RULES AND OPERATING INSTRUCTIONS MAY RESULT IN SERIOUS INJURY.**

1. The Vac's covered in this owner's guide is shipped complete in one box. Follow all instructions on assembly very carefully.
2. Unpack all items from Carton.
3. Tip box over so Wheels are toward floor. Pull unit out of box and stand upright.
4. **DO NOT** discard the Carton or any of the inserts until the unit is completely assembled.
5. All hardware is on the unit in it's proper location. If something is missing, notify the dealer/distributor where unit was purchased. If unable to purchase parts locally, contact the Parker Sweeper Company.
6. Whenever the terms left or right hand, or "L" and "R" are used, it means from a position standing behind the unit facing forward.

**NOTE:** See AF-280 Handle Assembly on Plate 753 for reference to numbers used in the following instructions.

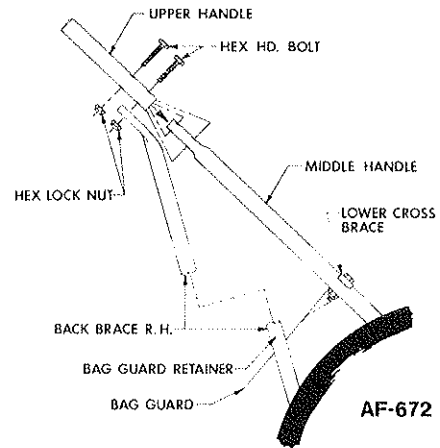
## HANDLE ASSEMBLY

1. Remove Hex Hd. Bolts (7) and Hex Lock Nuts (49) from the bottoms of the right and left Upper Handles (5) and (54).
2. Place Upper Handles (5) and (54) over ends of Middle Handles (25).
3. Align the lower holes in both Upper and Middle Handles. Replace Hex Hd. Bolts (7), removed in step 1, to each of the lower holes.
4. Lift Handles to align lower Hex Hd. Bolts (7) with holes in Back Braces (9) and (49).
5. Place Hex Hd. Bolts (7) thru holes in Back Braces and attach Hex Lock Nuts (49). **DO NOT TIGHTEN.**
6. Align the upper holes in both Upper and Middle Handles removed in step 1. **DO NOT TIGHTEN.**

**NOTE:** If Bag Guard Retainer (57) is removed prematurely, simply move Right Back Brace (9) up, and Left Back Brace (46) down. Place Bag Guard Retainer (57) in side hole on Left Back Brace (46). Move Right Back Brace (9) down and attach free end of Retainer to side hole of Right Back Brace (9). Simultaneously lift both Back Braces, and Re-attach Hardware. (See steps 5 & 6.)

**NOTE:** Check alignment of Handle. The Hex Lock Nuts have been left loose to allow movement between the holes and the Bolts. Do not bend tubing to accomplish proper alignment.

7. Once Handles are aligned tighten all Hex Lock Nuts (49). **NOTE:** Nuts should be tightened enough that at least two of the Bolt threads extend through the Nut. It may be necessary to collapse the tubing SLIGHTLY to accomplish this.



## ASSEMBLING BAG PLATFORM

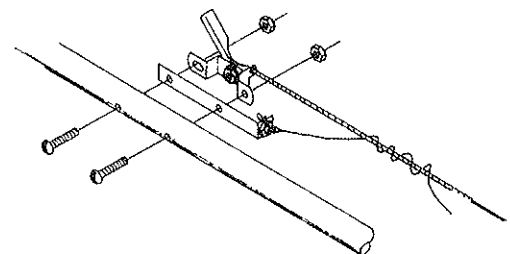
1. Place ends of Platform (27) onto End Caps (51) and align holes.
2. Place one Contour Hd. Bolt (6) through each hole and secure with Lockwashers (12) and Hex Nuts (13).
3. Lift back of Platform (27) and hold one Caster Assembly (33) against bottom, in either corner.
4. Round edge and holes of Caster Plate should align with outer edge and holes in corner of Platform.
5. Place Contour Hd. Bolt (6) through each hole and secure with Lockwashers (12) and Hex Nuts (13).
6. Repeat steps 3 thru 5 for other Caster.

## THROTTLE HOOK-UP

1. Remove Throttle Control Assembly from shipping position.
2. Straighten the Throttle Cable out and run it up the Left Hand Handles (5) and (25).
3. Align holes in Stop Switch (37) and Throttle Control (40) with those in Upper Left Handle.
4. Attach the Throttle Control (40) to the Upper Left Hand Handle (5) with the two Oval Hd. Screws (35) and Hex Nuts (41) furnished.
5. Attach Snap-On Clamps (56) to handles to secure Throttle Cable.

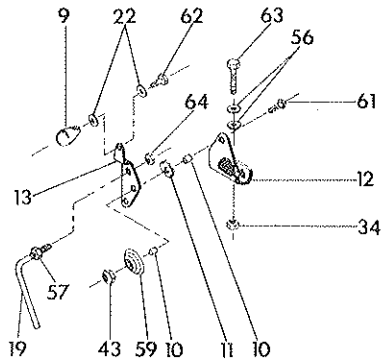
**NOTE:** Be sure not to place any bends in Throttle Control Cable less than 8 inches radius.

**NOTE:** Make sure Stop Switch is connected to Condensor Screw.



**NOTE:** L.P. Units are not supplied with Stop Switch. Disregard Step (3) and please refer to L.P. Operating Instructions.

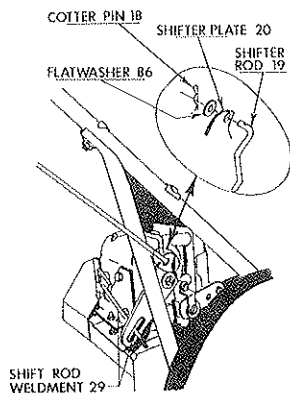
# ASSEMBLY INSTRUCTIONS



AF-398

## SHIFT LEVER CONNECTION

1. Remove hex lock nut (64) from shifter rod (19). Tighten plain nut (57) onto rod (19).
2. Place shifter rod (19) thru upper hole in shift lever (13) using plain nut (57) as a stop.
3. Replace hex lock nut (64) and tighten, leaving nut loose enough to allow the shifter rod to pivot freely.
4. Remove cotter pin (18) and flatwasher (86) from lower end of shifter rod (19). Place rod through hole in shifter plate (20) and replace flatwasher (86) and cotter pin (18).



AF-397

5. Pulling shift lever fully to the rear is reverse gear. Moving lever progressively from reverse is neutral, 1st, 2nd, 3rd, 4th and 5th gears. Securing bracket (12) is slotted on bottom for adjustment if necessary.

**NOTE:** Unit will roll freely forward and backward with the transmission in neutral.

## CLUTCH ASSEMBLY AND ADJUSTMENT

1. Remove the snap clamp (56) securing the clutch cable (53) to the left middle handle (25).
2. Run the clutch cable (53) up the right hand upper handle (54) and assemble open loop of spring (55) through hole in tab of clutch grip (30).
3. Check to make sure the lower end of clutch cable is seated in the nylon pulley (78).

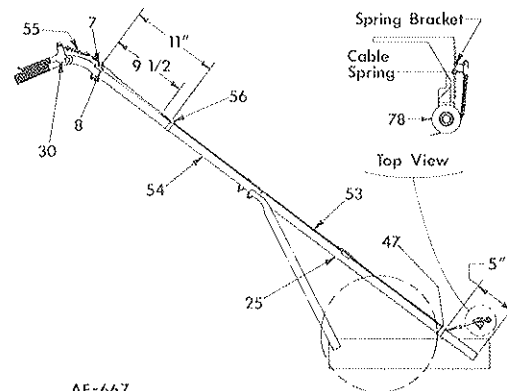
**NOTE:** Proper assembly of the clutch cable is important as it determines the adjustment of the clutch. Follow these instructions carefully to adjust clutch.

4. Loosen the fasteners on wire clamp (47) securing clutch cable (53) to the right middle handle (25).

5. Slide the black outer sheath of clutch cable (53) up or down so that the metal collar on top of sheath is 9 1/2 inches down from the center of the hex hd. bolt (7) securing upper cross brace (8) to handles.
6. Measure down 11 inches from that same bolt and assemble snap clamp (56), removed in step 1, to upper handle and clutch cable.
7. Measure up from the bottom of the middle handle (25) to the lowest edge of the wire clamp (47). This should be 5 inches.

**NOTE:** If adjustment is needed wire clamp (47) should be loosened enough to allow free movement over cable and handle without pulling or stretching black sheath.

8. Once clamp is properly set, hold in place and tighten fasteners.
9. This should be the correct setting and no further adjustment needed. To check, depress clutch grip (30), engaging clutch, the cable spring should be, almost or just touching nylon pulley (78).
10. If after inspection or operation the clutch would need adjustment, loosen the fasteners on the wire clamp (47). Moving the clamp upward on handle and cable will loosen the tension of clutch. Moving the clamp down will tighten clutch.



AF-667

## TO ASSEMBLE SPIN-PAK®

1. Remove the hex hd. bolts, lock nuts, and flatwashers, from the three upper holes used to secure the retaining ring to the blower housing. DO NOT remove the bottom bolt or the retaining ring from blower housing.
2. Align the holes in the Spin-Pak® with the three upper holes in the retaining ring and blower housing. Replace hardware removed in Step 1 and tighten.

## ATTACHING DUST BAG

1. Attach Bag Hooks to upper Bag Straps and hook over upper handles above Upper Cross Brace.
2. Slip the neck of the dust bag over the Spin-Pak® until the tie strap can be pulled tight around the housing neck just over the bead on the Spin-Pak®. The bead must be covered.
3. Attach Bag Hooks to the front Bag Straps and hook over the lower cross brace. IMPORTANT: Failure to attach front Bag Straps to the lower crossbar will cause premature wear of bag around the bottom and around the neck at the Spin-Pak®. The Spin-Pak® may also break due to excessive weight from the Bag.

**NOTE: FAILURE TO OBSERVE SAFETY INSTRUCTIONS MAY RESULT IN SERIOUS INJURY.**

# ASSEMBLY INSTRUCTIONS (Cont.)

## ATTACHING INTAKE HOUSING

**NOTE:** See AF-587 Housing Assembly on Plate No. 755 to the back of this owner's guide for reference to numbers used in the following instructions.

1. Insert Hinge Bosses, on Collar of Intake Housing (14) behind the Hinge Extensions on Front Cover Assembly (8).
2. Swing Intake Housing (14) to lay flat against Front Cover Assembly (8).
3. Secure by placing Flatwasher (10) and Adjusting Knob (9), on Pivot Bolt, over the Collar of Intake Housing (14) and tighten Adjusting Knob (9).

## L.P. FUEL TANK HOOK-UP

**WARNING:** Proper assembly of replacement parts is the responsibility of the owner or mechanic doing the work. Parker Sweeper Company will not recommend or supply replacement parts for liquid propane units. Parts listed on repair parts list are for reference only. As technology continues to change, the manufacturer should be consulted for recommendation of repair parts and instructions for their assembly.

**NOTE:** Only authorized L.P. mechanics familiar with current parts. Failure to comply with this requirement could result in serious damage, fire, explosion or asphyxiation. This applies to the following instructions.

**NOTE:** Numbers in parenthesis refer to those used in AF-277 "L.P. GAS GROUP" on Plate No. 874 to the back of this owner's guide.

1. The Liquid Propane Vac-35 requires a 20-pound Vapor Withdrawal Fuel Tank. This tank can be purchased separately from Parker Sweeper Co. as part no. 65-747-B (Item (9) must be ordered when tank is ordered). If purchased from a local L.P. Fuel Supplier, they will need to install the Street Elbow which always remains with the Tank.

**NOTE:** The Tank Fuel Outlet must be parallel thru the valve, with the tank center line thru the pin and the gage center.

2. Place tank in Tank Bracket Weldment (11) making sure vertical pin is through hole in Tank Collar. This places the relief valve so that any fuel discharged is directed UPWARD. As required by government regulations for the L.P. fuel tanks.
3. Secure Tank with Strap Weldment (12).
4. Remove Male Half (16) from quick disconnect coupling and thread onto Street Elbow (9).
5. Attach Hose (14) to Tank by threading Female Half (15) of quick disconnect coupling to Male Half (16).
6. See Operating Instructions for procedure to be used in starting Engine with L.P. fuel.

## TANK SPECIFICATION

1. Storage and Handling Liquefied Petroleum Gases-1979 NFPA Specifications.
2. Horizontally Mounted Vapor Withdrawal.
3. 12 1/4 O.D., 19 overall length, 13 5/8 cyl. length 20 lbs., .77 cu. ft. automatic excess flow valve.
4. Manchester Tank & Equipment Company  
29389 Lexington Park Drive  
Elkhart, Indiana 46514  
Parker Sweeper Company  
Part No. 65-747-B

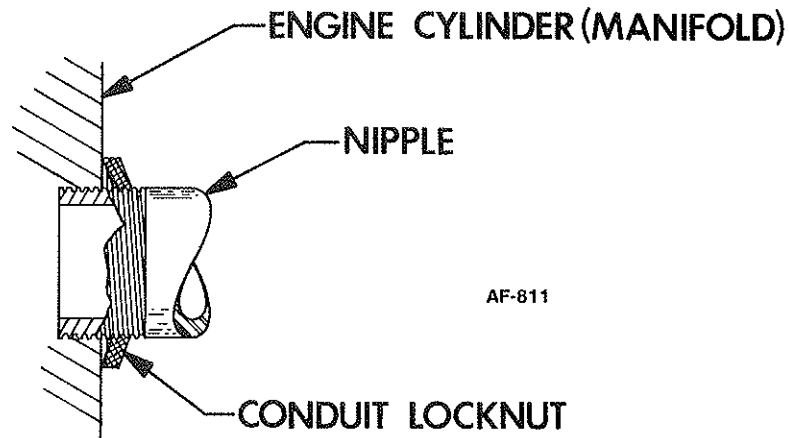
**NOTE:** Auto excess flow valve must be attached to the tank so the threaded end is parallel with the center line thru the float gage.

## MUFFLER ASSEMBLY

**NOTE:** For L.P. Units only. See AF-257 on Plate No. 754 for reference to numbers used in the following instructions.

1. Remove Muffler (25) and Pipe Nipple (2) from shipping position.
2. Attach items to threaded Casting Manifold on Engine (4).
3. Adjust Conduit Locknut (24) to desired position on Pipe Nipple (2) and tighten securely.

**NOTE:** Conduit Locknut must be installed as shown below, to avoid Premature Failure. If loosened, it may cause damage to Cylinder Threads.



### WARNING

Make a thorough inspection to see that all fastenings are tight and all parts are properly installed. DO NOT start engine without Intake Housing and Dust Bag in place.

### IMPORTANT

**WARNING:** The Engine contains NO OIL. Read the Engine Instruction Manual carefully before operating the Vac-35. Be sure you know how to start and stop the Engine before proceeding further. Do not start the Engine until all assembly is finished.

**OBSERVE SAFETY RULES AT ALL TIMES. DON'T TAKE CHANCES!**

# OPERATING INSTRUCTIONS

## SELF PROPELLED LIQUID PROPANE UNIT

**NOTE: FAILURE TO OBSERVE SAFETY INSTRUCTIONS MAY RESULT IN SERIOUS INJURY.**

### LIQUID PROPANE FUEL

**CAUTION:** When installing Fuel Tanks, new or refills, be sure they comply with the following specifications:

1. Storage and Handling Liquified Petroleum Gases-1979 NFPA Specifications.
2. Horizontally Mounted Vapor Withdrawal.
3. 12 1/4 O.D., 19 overall length, 13 5/8 cyl. length 20 lbs., .77 cu. ft. automatic excess flow valve.

*These specifications are also printed on the fuel tank support.*

**IMPORTANT:** Check your local, state and federal regulations for using liquid propane fuel to be sure you comply with all requirements.

### TO START LIQUID PROPANE UNIT:

**IMPORTANT:** Read the Engine Manual CAREFULLY before operating the Vac-35.

Before starting the Engine read and understand the following:

1. Be sure the Engine crankcase is filled with the proper type and amount of oil.
2. Spin-Pak® is in place.
3. Dust Bag or Discharge Hose is in place.
4. Intake Housing or Hose Kit is attached to the Fan Housing.
5. Transmission MUST be in NEUTRAL to start.
6. Release the BRAKE by twisting lever and letting it slide down.
7. Open Fuel Line valve at Tank.
8. Set Throttle in closed position.
9. Pull Starter Rewind Cable 3 or 4 times. This will open automatic shut-off valve allowing fuel to enter the Regulator. Engine may start at this time. If not, open Throttle 1/4 and momentarily press the Primer Button on the Regulator. Pull the Starter Rewind Cable with one hand and intermittently press the Primer Button as the Starter Cable is pulled thru. Open throttle to full position after Engine starts.
10. If Engine fails to start, repeat steps 8 & 9.
11. Turn in main fuel jet until it is closed. Back out 1 1/4 turns. This should be the position to allow the Engine to start. After Engine has been warmed up, adjust main jet for final running position by turning slowly in either direction until the Engine performance is satisfactory.  
**CAUTION:** When stopping Engine, shut off fuel at tank and run Engine until it stops. This removes pressure from the valves and regulators and lengthens their life. Also, this reduces danger from fuel leakage while Engine is not used. This procedure is mandatory under National Fire Protection Assoc. Document 58, "Storage and Handling Liquid Petroleum Gases, 1979."
12. TO STOP UNIT, PLACE GEAR SHIFT LEVER IN NEUTRAL.
13. Pull up and twist Brake Lever 1/4 turn to lock in Brake position. This Brake is to be used as only a parking Brake.

14. Extra filled Tanks should be stored on steel rack with Tank horizontal and arrow and relief valve up.

### TRANSMISSION OPERATION

**NOTE:** Transmission has five forward speeds.

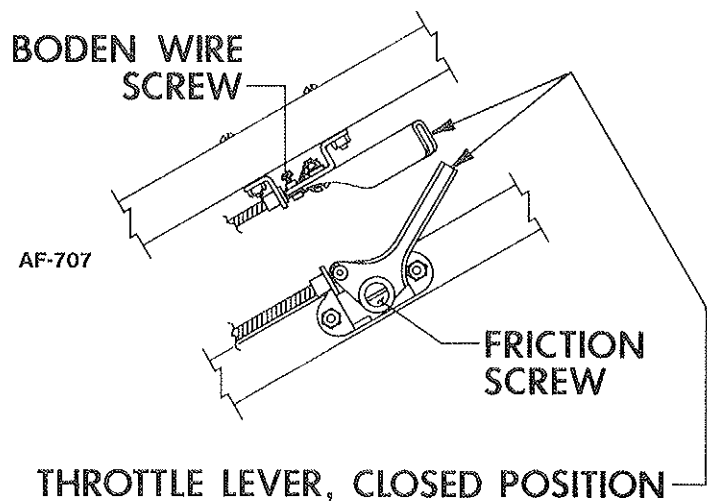
1. Transmission used on this equipment is a tractor type (not automotive). The operator does not have to start in first gear and shift on up to gear required, he can go directly into the gear needed. It is also important to understand that the gears are designed to go into mesh (into gear) only when not turning. De-clutching (releasing clutch handle) is required at all times when gear selection occurs. Never shift on hills or inclined surfaces.
2. The operator should not shift with the unit under heavy load. In no case should an operator shift from first to neutral, from reverse to neutral, or from neutral to first or reverse, without de-clutching.

### CLUTCH OPERATION

1. The unit is equipped with a "Dead Man" clutch. When the transmission is put in gear, and the clutch is depressed and held in the down position the unit will move. The unit will stop moving when the clutch is released.

### THROTTLE OPERATION AND ADJUSTMENT

1. The Throttle Control on Handle is a remote for the Throttle Control on Engine. Pull the throttle lever back, toward operator, to open Throttle for starting or speed control.
2. To stop unit, move Throttle Lever to the closed position and shut off fuel at Tank and run Engine until it stops.
3. While operating, if Throttle Lever does not stay open due to vibration of unit, tighten Friction Screw until there is sufficient friction to hold Throttle open.



**BE SAFE.  
PROTECT YOUR FAMILY,  
YOUR FRIEND, YOURSELF.  
OBSERVE ALL SAFETY INSTRUCTIONS.**

# OPERATING INSTRUCTIONS (Cont.)

## SELF PROPELLED UNIT

### TO START UNIT

KOHLER ENGINES. The Stop Switch is located on the Handle.

**IMPORTANT:** Read the Engine manual CAREFULLY before operating the Vac-35.

Before starting the engine read and understand the following:

1. Be sure the Engine crankcase is filled with the proper type and amount of oil.
2. Spin-Pak® is in place.
3. Dust Bag or Discharge Hose is in place.
4. Intake Housing or Hose Kit is attached to the Fan Housing.
5. Transmission MUST be in NEUTRAL to start.
6. Move SAFETY STOP switch to ON position.
7. Pull Starter Rewind Cable 3 or 4 times. If Engine fails to start, repeat steps 5 & 6.
8. After Engine has started, release the BRAKE by twisting lever and letting it slide down.

**WARNING:** When refueling care should be taken not to spill fuel on hot Engine. This could cause the fuel to ignite, resulting in serious injury to operator or damage to the unit.

9. TO STOP UNIT, PLACE GEAR SHIFT LEVER IN NEUTRAL, and move SAFETY STOP switch to OFF position. Pull up and twist Brake lever 1/4 turn to lock in Brake position. This Brake is to be used as only a parking Brake.

### TRANSMISSION OPERATION

NOTE: Transmission has five forward speeds.

1. Transmission used on this equipment is a tractor type (not automotive). The operator does not have to start in first gear and shift on up to gear required, he can go directly into the gear needed. It is also important to understand that the gears are designed to go into mesh (into gear) only when not turning. De-clutching (releasing clutch handle) is required at all times when gear selection occurs. Never shift on hills or inclined surfaces.
2. The operator should not shift with the unit under heavy load. In no case should an operator shift from first to neutral, from reverse to neutral, or from neutral to first or reverse, without de-clutching.

### OPERATING NOTES

1. The efficiency of this unit depends on the breathing capacity of the Dust Bag. Under extremely dusty conditions the bag should be emptied and cleaned frequently. Always empty and clean bag before storing after use. Debris allowed to remain in the bag may cause spontaneous combustion, resulting in an explosion or fire.
2. Heavy concentrations of sand and gravel should be avoided. These materials are extremely abrasive, and while the Vac-35 will handle moderate amounts of these materials, it was not designed for heavy applications. Treat the Vac-35 with reasonable care and it will provide long, trouble-free service.
3. The Vac-35 will handle most common kinds of debris found around industrial plants, commercial buildings, homes, and farms. Acid contaminated materials, magnesium, dust and other DANGEROUS DEBRIS should not be handled with the Vac-35 unless approved by a regulating authority expert in the handling of such hazardous materials.
4. When using Hose attachment, keep it away from Engine exhaust system and other parts of the Engine that may be hot enough to burn Plastic Hose.
5. The Vac-35 is equipped with a Front Adjustable Caster which provide any height adjustment of Intake Housing that is practical. Nuts must be kept tight.

### IMPORTANT

If Engine is started with Intake attached, serious injury may result by drawing clothing or parts of the body into the Fan.

If Engine is run without Dust Bag, small stones or other objects may be picked up and propelled at operator or bystanders through the unprotected opening causing serious injury.

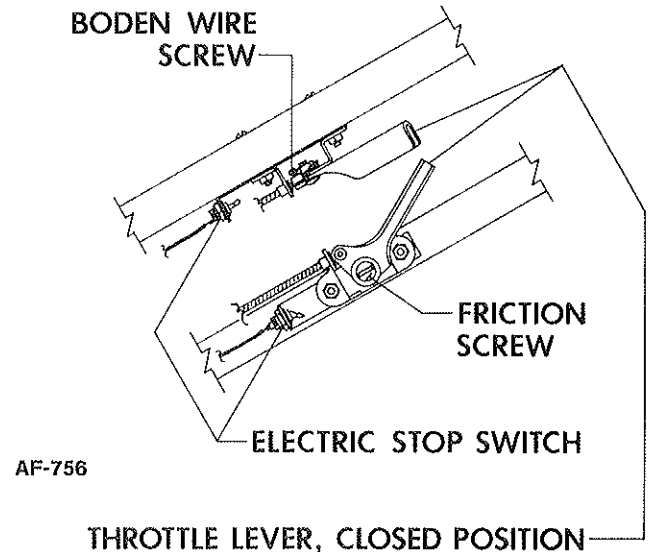
**DANGER:** Improper use of this equipment may result in serious injury.

### CLUTCH OPERATION

1. The unit is equipped with a "Dead Man" clutch. When the transmission is put in gear, and the clutch is depressed and held in the down position the unit will move. The unit will stop moving when the clutch is released.

### THROTTLE OPERATION AND ADJUSTMENT

1. The Throttle Control on Handle is a remote for the Throttle Control on Engine. Pull the Throttle Lever back, toward operator, to open Throttle for starting or speed control. Move Throttle Lever forward to the closed position for lowest idle.
2. To stop unit, move Throttle Lever to the closed position and engage Electric Stop Switch.
3. If Engine is not stopping easily or seems to idle too high; Stop Engine and let cool if hot. Move Throttle lever to closed position and loosen Boden Wire Screw. Move Throttle Lever on Engine to full closed and retighten Boden Wire Screw.
4. While operating, if Throttle Lever does not stay open due to vibration of unit, tighten Friction Screw until there is sufficient friction to hold Throttle open.



# MAINTENANCE INSTRUCTIONS

## LUBRICATION

1. Lubricate the Wheel Bearings and Wheel Axle on the Caster once a week if used daily.

NOTE: Refer to Engine operating instructions for proper lubrication of the Engine.

2. Add a few drops of oil to the Throttle Control Cable and Wire to keep it operating smoothly.
3. Grease fittings are located in the Hubs of the Rear Wheels. Fresh grease should be added periodically to assure proper lubrication of Wheels.

NOTE: Check all items once a week if unit is used daily.

## DUST BAG CARE

1. Keep the Dust Bag clean at all times.
2. To clean the Dust Bag, turn the bag inside out and reattach to the sweeper.
3. Start the Engine and run at full Throttle. Lightly tap the Bag to release the dust trapped in the weave.
4. When the Bag is clean, remove it and turn it right side out again. Reattach to the Sweeper and resume sweeping.
5. DO NOT wash the Dust Bag to clean.

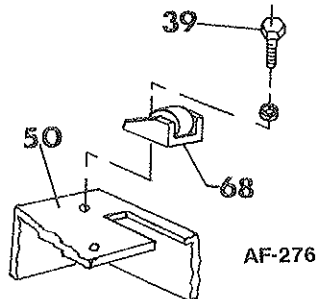
## CHAIN TENSIONER ADJUSTMENT

NOTE: See AF-274 Chassis Assembly on Plate No. 751 to the back of this owner's guide for reference to numbers used in the following instructions.

1. The Chain Tensioner is adjusted properly at factory before shipment. Chain should be checked periodically for Chain tension and wear on Chain Tensioner. If Chain Tensioner should need replaced or Chain tension adjusted, follow these instructions.

NOTE: Round Wooden "Roller" is not designed to "roll." It must be clamped tightly with Bolt through Casting. Chain Side Bars will cut guide grooves in Roller and Chain Rollers will roll against Wood, assuring proper Chain adjustment and guidance without damage to Chain.

2. Remove Chain Cover (15).
3. Loosen Hex Hd. Bolt (39).
4. Slide the Tensioner (63) forward (toward Chain) until Tensioner will not slide further.



5. Pull Tensioner back 1/8" and retighten Hex Head Bolt (39).
6. Check Chain by pushing down and lifting Chain between Tensioner and Differential Sprocket.
7. Chain should move approximately 1/8" when checked. If Chain is loose it will jump off Sprocket. If too tight, Chain may break or cause excessive wear on Bearings.

## BELT ADJUSTMENT

Best adjustments is automatically controlled by an Extension Spring on the end of the Clutch Cable. With this system, Belt tension is always correct, reducing Belt wear and Belt stretch.

## BELT REPLACEMENT

1. Remove the Spark Plug to insure that Engine cannot be started accidentally.
2. Belt can be replaced by removing the Blower Housing and Fan.

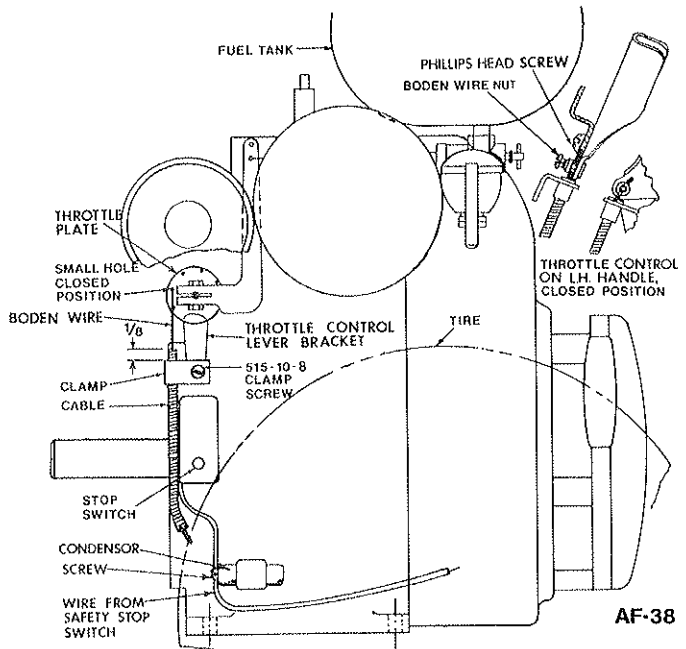
Remove the following items to reach Belt:

1. Dust Bag
2. Intake Housing
3. Front Cover
4. Fan
5. Spin-Pak®
6. Fan Housing
7. Guard

## THROTTLE CONTROL CONNECTION

If it becomes necessary to remove or adjust Throttle Control Cable from Engine, follow set of instructions below.

1. Place Boden Wire thru Clamp and attach to Throttle Plate as shown in illustration AF-38.
2. Extend 1/8" of Cable beyond Throttle Lever Clamp and tighten Clamp Screw.
3. With Throttle Plate in the closed position on the Engine, Throttle Control on Handle should also be in the closed position.

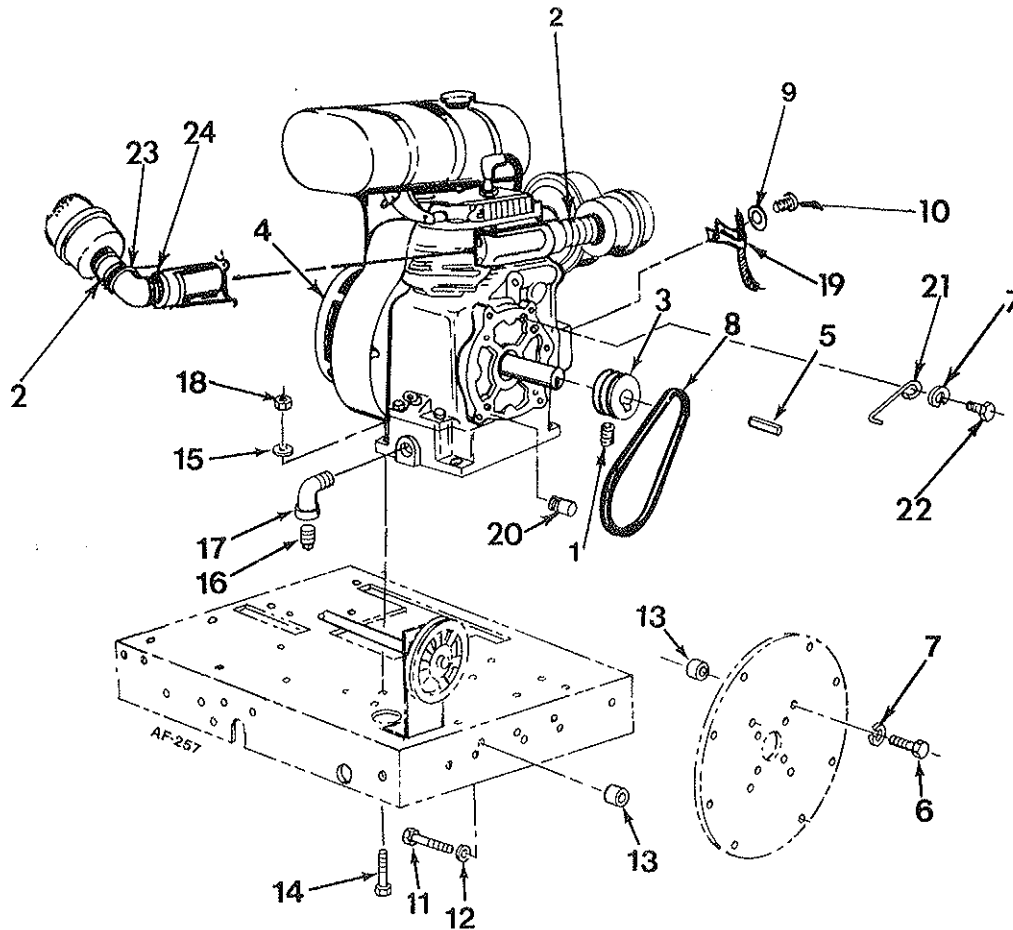


NOTE: Make sure Stop Switch Wire is connected to Condenser Screw.

NOTE: If Throttle does not stay open due to vibration of unit, tighten Friction Screw on Throttle Control until there is sufficient friction to hold Throttle open.

READ SAFETY & OPERATING INSTRUCTIONS BEFORE OPERATING EQUIPMENT.

KOHLER ENGINE ASSEMBLY



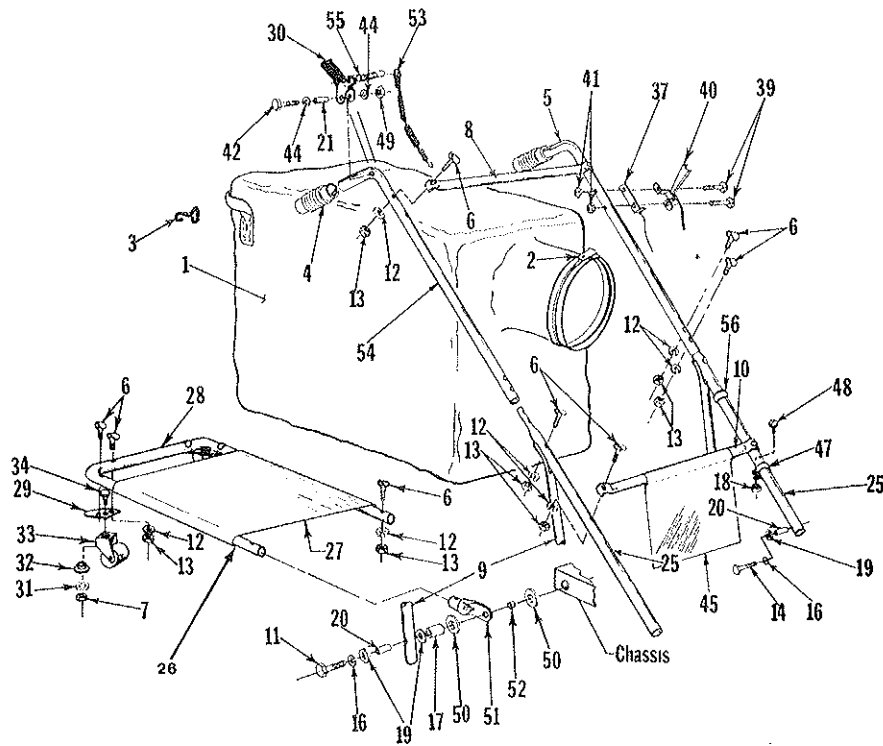
PARTS LIST

Ref. No.	Part No.	Description	Qty. Per Unit	Ref. No.	Part No.	Description	Qty. Per Unit
1	564-416-8	Screw, Set 1/4-20 x 1/2	1	12	935-416	Lockwasher, 1/4"	2
2	67-68-A	Pipe Nipple, 1 x 4	1	13	79-139-A	Spacer, Back Cover	6
3	81-61-A	Pulley, Engine	1	14	65-616-20	Bolt, Hex. Hd., 3/8-16 x 1 1/4	4
*4	83-47-D	Engine, Kohler <del>86-88-D</del>	1	15	945-616	Flat Washer, 3/8	4
5	74-112-A	Fan Key, 1/4 x 2 1/2	1	16	**	Pipe Plug, Oil Drain	1
6	65-616-24	Bolt, Hex. Hd., 3/8-16 x 1 1/2	4	17	57-81-A	Street Elbow, 1/2 x 90°	1
7	935-616	Lock Washer, Spring, 3/8	5	18	365-616	Lock Nut, Hex. Hd., 3/8-16	4
8	73-417-A	V Belt 3L-210	1	19	75-115-A	Throttle Cable Clip	1
9	935-8	Lockwasher, #8	1	20	81-32-A	Belt Popper	1
10	515-8-8	Screw, Rd. Hd., 8-32 x 1/2	1	21	81-33-A	Belt Popper	1
11	65-416-28	Bolt, Hex. Hd., 1/4-20 x 1 3/4	2	22	65-616-12	Bolt, Hex. Hd., 3/8-16 x 3/4	1
				***23	<del>69-125-A</del>	Street Elbow 1 x 45°	1
				***24	73-240-A	Conduit Locknut 1"	1

\* Kohler Model No. K-181-T, Spec. 30814  
 \*\* Supplied with Engine

\*\*\* Used on PV-8308-K-SP only

HANDLE ASSEMBLY



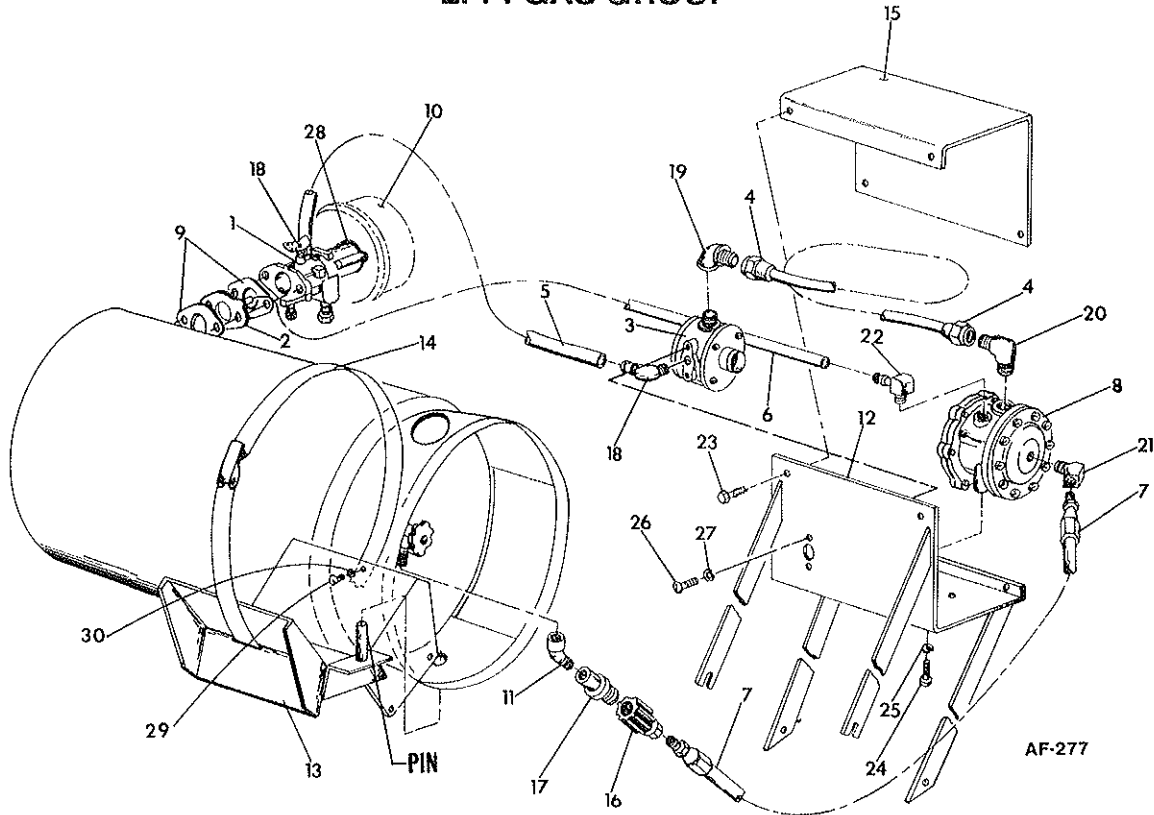
AF-280

PARTS LIST

Ref. No.	Part No.	Description	Qty. Per Unit	Ref. No.	Part No.	Description	Qty. Per Unit
1	MA-419-A	Dust Bag Assembly	1	30	SA-1176-A	Clutch Grip Assembly	1
*2	SA-794-B	Strap Assembly	1	31	50-230-A	Washer - Special	2
*3	63-304-A	Bag Hook	2	32	78-130-A	Bearing, Caster	2
4	80-232-A	Handle Grip	2	33	SA-962-B	Caster Assembly	2
5	83-18-C	Handles, Upper L.H.	1	34	65-516-16	Bolt, Hex. Hd., 5/16-18x1	2
6	69-416-24	Bolt, Contour Hd., 1/4-20x1 1/2	15	37	SA-1175-B-45	Stop Switch Assy.	1
8	81-04-B	Cross Brace, Upper	1	39	515-10-24	Screw, Rd. Hd., 10-24x1 1/2	2
9	82-244-C	Back Brace <i>85-09-C (PAIRS)</i>	2	40	88-25-B-49	Throttle Control Assy.	1
10	81-47-B	Cross Brace, Lower	1	41	365-10	Nut, Hex. Lock, 10-24	2
11	65-516-40	Bolt, Hex. Hd., 5/16-18x2 1/2	2	42	65-416-32	Bolt, Hex. Hd., 1/4-20x2	1
12	935-416	Lock Washer, Spring, 1/4	15	44	945-416	Flatwasher, 1/4	2
13	335-416	Nut, Hex. Plain, 1/4-20	15	45	80-237-A	Bag Guard	1
14	65-516-28	Bolt, Hex. Hd., 5/16-18x1 3/4	2	47	81-88-A	Wire Clamp	2
15	365-516	Nut, Hex. Lock, 5/16-18	4	48	515-8-8	Screw, Rd. Hd., 8-32x1/2	2
16	935-516	Lockwasher, Spring, 5/16	4	49	365-416	Lock Nut, Hex. Hd., 1/4-20	1
17	81-42-A	Spacer	2	50	76-36-A	Special Washer	4
18	365-8	Nut, Hex Lock, 8-32	2	51	81-116-A	Tubing End Cap	2
19	945-516	Flatwasher, 5/16	6	52	81-120-A	Spacer	2
20	80-238-A	Inserts	4	53	82-84-A	Clutch Cable	1
21	80-225-A	Spacer <i>80-264-A</i>	1	54	81-23-C	Upper Handle, R.H.	1
25	82-242-B	Middle Handle	2	55	74-167-A	Spring	1
26	8A-982-C	Bag Platform (Complete Assy.) <i>MA 471-C</i>	1	56	80-276-A	Clamp, Snap-on	1
27	81-117-C	Bag Platform	1				
28	81-96-B	Frame, Bag Platform	1				
29	82-02-B	Caster Plate	2				

\*Supplied with MA-419-A Dust Bag Assy.

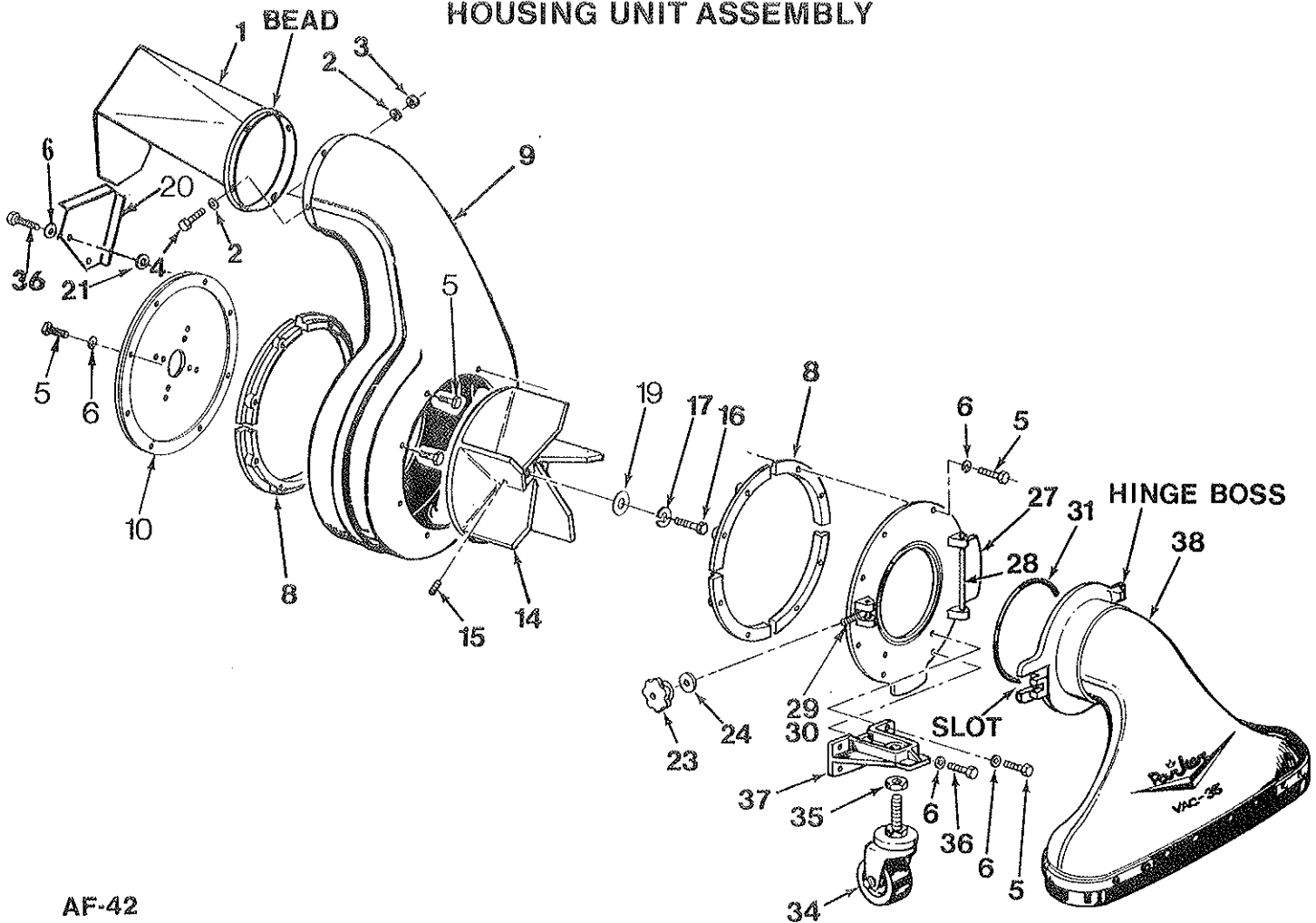
L. P. GAS GROUP



**NOTE:** All parts listed are under the manufacturers' name and part number. Replacement parts should be purchased directly from each company listed with a complete description of the part and part number. Addresses of manufacturers who stock parts are listed in the assembly instructions. Parts listed under the "Standard Parts" can be purchased from most hardware stores.

Ref. Part No.	Part No.	Description	Ref. Part No.	Part No.	Description
<b>Garretson Parts</b>			<b>Parker Sweeper Company Parts</b>		
1.	220-0118	Carburetor	12.	74-142-C	Regulator Bracket
2.	180-02	Idler Plate	13.	65-565-C	Tank Bracket
3.	074-131	Regulator, Pressure MD #52	14.	80-278-B	Tank Hold down Band
4.	491-12	Vapor Hose, Fuel Line, 12" Lg.	15.	76-365-C	Regulator Mount Cover
<b>Dayco Corporation Parts</b>			16.	7141-E-	Connector, Female, 1/4-18, 400 PSI
5.	6428-C	Fuel Line Carburetor, 12" Lg.	17.	7141-M-	Connector, Male, 3/8-18, 400 PSI
6.	6428-C	Vacuum Line, 18" Lg.	<b>Standard Parts</b>		
<b>Weatherhead Company Part</b>			18.	—	1/4 NPT Male x 90° Hose Barb
7.	H-368-5	Fuel Line Inlet, 24" Lg.	19.	—	Female 90° Elbow 5/8-18 x 1/4-18, Female Thread
<b>A. J. Industries Part</b>			20.	—	Male 90° Elbow, 3/8 Tube x 1/4 Pipe Thread
8.	VFF-30	Fuelock, Vacuum and Filter	21.	—	Street Elbow 45°, 1/4-18 NPT
<b>Kohler Company Parts</b>			22.	—	Male 1/8 NPT x 1/4 Hose Barb
9.	210223	Gasket	23.	62-416-10	Bolt, Self Tapping Hex. Hd., 1/4-28 x 5/8
10.	231857	Air Cleaner Base	24.	65-416-12	Bolt, Hex. Hd., 1/4-20 x 3/4
<b>Imperial-Eastman Part or Equivalent</b>			25.	935-416	Lockwasher, Spring, 1/4
11.	124-13	Street Elbow, Brass, 3/8 x 45° 3000 Lbs. Test	26.	504-1032-8	Screw, Rd. Hd., 10-32 x 1/2
			27.	935-10	Lockwasher, Spring, #10
			28.	515-10-6	Screw, Rd. Hd., 10-24 x 3/8
			29.	346-10	Speed Nut #10

HOUSING UNIT ASSEMBLY



AF-42

PARTS LIST

Ref. No.	Part No.	Description	Qty. Per Unit	Ref. No.	Part No.	Description	Qty. Per Unit
1	88-76-B-	Spin Pak, Deflector	1	24	945-816	Flat Washer, 1/2 SAE	1
2	945-416	Flat Washer, 1/4 SAE	8	25	65-416-16	Bolt, Hex. Hd., 1/4-20 x 1	8
3	364-416	Thin Lock Nut, Hex. Hd., 1/4-20	4	26	935-416	Lock Washer, Spring, 1/4	12
4	65-416-10	Bolt, Hex. Hd., 1/4-20x5/8	4	27	63-225-D	Front Cover (Complete Assy.)	1
5	65-416-16	Bolt, Hex. Hd., 1/4-20x1	4	28	63-194-A	Hinge Pin	1
6	935-416	Lock Washer, Spring, 1/4	6	29	63-192-A	Pivot Bolt	1
8	64-78-C	Anti-Wrap Segment	8	30	63-193-A	Roll Pin, 0.264 x 1 1/4	1
9	70-103-F	Housing Assembly	1	31	63-190-A	O-Ring, Gasket	1
10	84-372-C	Back Cover & Gasket	1	34	64-71-A	Caster Stem Type	1
14	72-175-D	Fan Wheel	1	35	340-1216	Jam Nut, Hex., 3/4-10	1
15	564-C-516-16	Setscrew, 5/16-18 x 1	1	36	65-416-20	Bolt, Hex. Hd., 1/4-20x1 1/4	4
16**	60-716-20	Bolt, Hex. Hd., 7/16-20x1 1/4	1	37	66-430-C	Caster Bracket	1
17	935-716	Lock Washer, Spring, 7/16	1	38	5A-911-D	Intake Housing, 30" MA-251-D	1
19	82-138-B3	Washer, Special	1	38	MA-113-D	Intake Housing, 24"	*
20	72-241-B	Heat Shield	1	38	MA-120-D	Intake Housing, 36"	*
21	54-227-A	Spacer	2				
23	80-29-A	Adjusting Knob	1				

\*Purchased separately, optional accessory

\*\*Torque 55 to 59 ft. lbs.

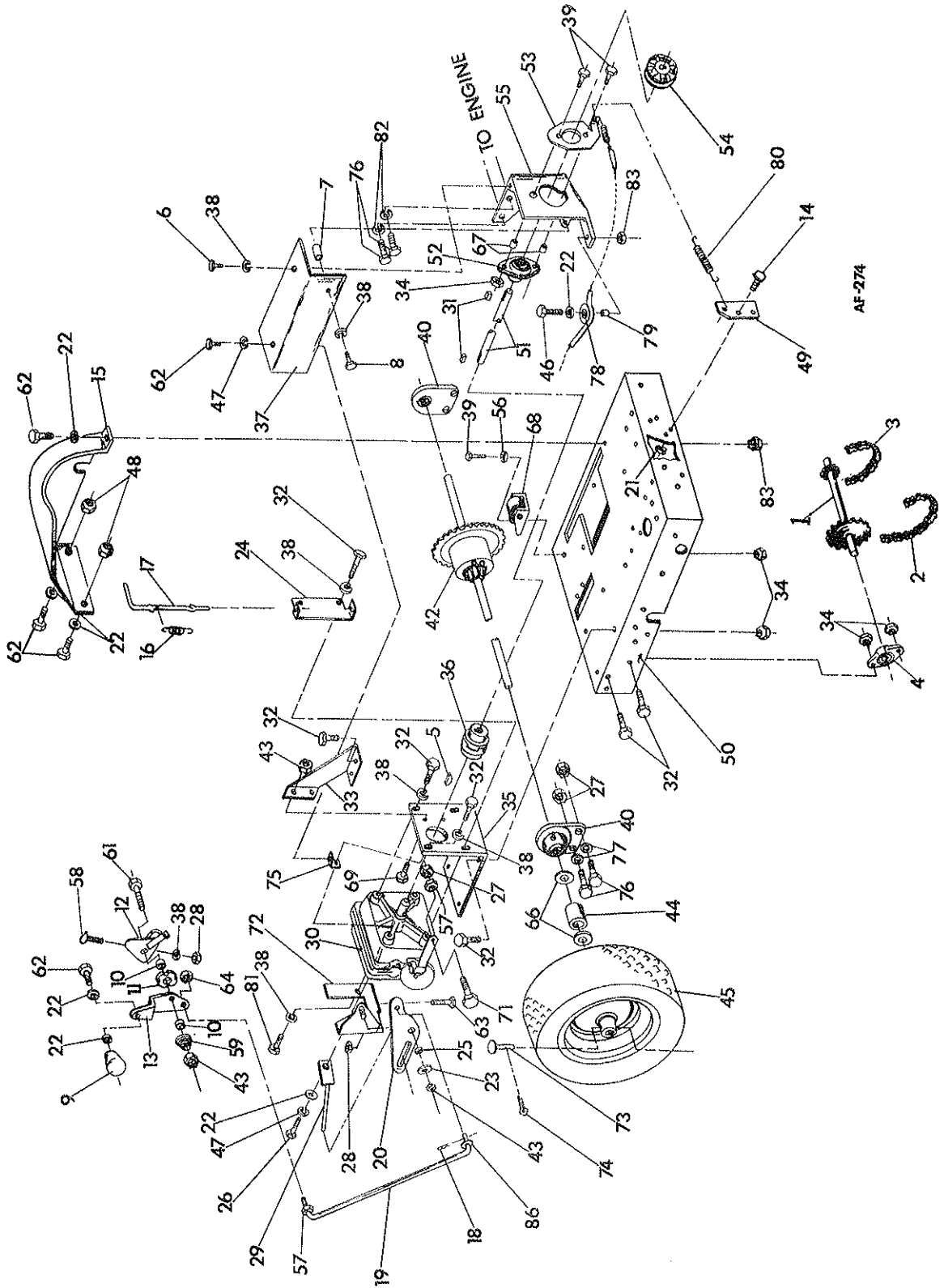
## CHASSIS &amp; DRIVE ASSEMBLY

## PARTS LIST

Ref. Part No.	Part No.	Description	Qty. Per Unit	Ref. Part No.	Part No.	Description	Qty. Per Unit
1	81-25-B	Jack Shaft	1	44	74-168-A	Wheel Spacer	2
2	<del>74-117-A</del>	Chain, Roller #41-32p <i>84-41-32-B</i>	1	45	68-310-B	Wheel Assembly	2
3	<del>74-118-A</del>	Chain, Roller #41-50p <i>84-41-50-B</i>	1		<del>68-311-B</del>	Wheel	2
4	74-116-A	Bearing Assy. Side Flange	2		<del>68-312-A</del>	Tire 5.30/4.50x6 <i>use 68-310-B</i>	2
5	280-09	#9 Woodruff Key	1	46	65-416-16	Bolt, Hex Hd., 1/4-20x1	1
6	61-516-8	Bolt, Self Tapping 5/16-18x1/2	1	47	935-416	Lockwasher, Spring, 1/4	3
7	81-10-A	Spacer	1	49	82-159-B	Spring Support Bracket	1
8	61-516-16	Bolt, Self Tapping, 5/16-18x1	1	50	81-19-D	Chassis	1
9	75-79-A	Shifter Knob	1	51	82-40-A	Drive Shaft	1
10	54-227-A	Spacer	2	52	66-138-A	Seal Master Bearing	1
11	68-28-A	Cupped Washer	1	53	81-43-A	Spring Bracket	1
12	82-137-A	Stop & Bracket	1	54	74-86-A	Sheave, Drive	1
13	70-67-B	Shift Lever	1	55	82-16-C	Clutch Bracket	1
14	65-416-10	Bolt, Hex. Hd., 1/4-20x5/8	2	56	945-516	Flatwasher, Plain, 5/16	1
15	82-195-D	Chain Guard	1	57	335-616	Nut, Hex Plain, 3/8-16	2
16	74-167-A	Spring, Brake	1	58	69-516-24	Bolt, Contour Hd., 5/16-18x1 1/2	1
17	74-96-A	Brake Lever	1	59	80-162-A	Shifter Spring	1
18	57-110-A	Cotter Pin	1	61	515-516-12	Screw	1
19	82-227-B	Shifter Rod	1	62	65-416-8	Bolt, Hex. Hd., 1/4-20x1/2	5
20	83-29-A	Shifter Plate	1	63	65-516-24	Bolt, Hex. Hd., 5/16-18x1 1/2	1
21	365-416	Nut, Hex Lock, 1/4-20	2	64	364-616	Nut, Hex. Lock Thin, 3/8-16	1
22	945-416	Flatwasher, Plain, 1/4	7	66	66-431-A	Special Washer	4
23	76-36-A	Special Washer	1	67	81-42-A	Spacer	2
24	82-164-D	Brake Bracket	1	68	SA-968-A	Tensioner & Roller Assy.	1
25	83-35-A	Spacer	1	69	65-516-10	Bolt, Hex. Hd., 5/16-18x5/8	2
26	60-416-10	Bolt, Hex. Hd., 1/4-20x5/8	1	71	65-616-20	Bolt, Hex. Hd., 3/8-16x1 1/4	1
27	365-616	Nut, Hex. Lock, 3/8-16	5	72	82-141-B	Adj. Plate	1
28	335-516	Hex Nut, Plain, 5/16-18	2	73	80-44-A	Clevis Pin	2
29	82-134-B	Shift Rod	1	74	380-332-8	Cotter Pin	2
30*	SA-857-A	Transmission	1	75	80-32-A	Bracket & Nut	1
31	48-277-A	Key, 3/16 Square	2	76	65-616-16	Bolt, Hex. Hd., 3/8-16x1	6
32	65-516-12	Bolt, 5/16-18x3/4	14	77	81-166-A	Special Washer, 3/8	4
33	82-20-C	Transmission Bracket Brace	1	78	81-44-A	Nylon Pulley	1
34	365-516	Nut, Hex. Lock, 5/16-18	13	79	81-45-A	Spacer	1
35	82-15-D	Transmission Bracket	1	80	81-31-A	Spring	1
36	74-114-A	Flexible Coupling	1	81	61-516-12	Bolt, Self Tapping, 5/16-18x3/4	3
37	81-83-D	Shaft Guard	1	82	935-616	Lockwasher, Spring, 3/8	2
38	935-516	Lockwasher, Spring, 5/16	10	83	364-416	Nut, Hex. Lock Thin, 1/4-20	4
39	65-516-16	Bolt, Hex. Hd., 5/16-18x1	3	84	66-139-A	Flange Bearing	2
40	SA-816-B	Bearing Assy.	2	85	81-40-A	Bearing Spacer	1
42	SA-1243-D	Differential Assembly	1	86	945-616	Flatwasher, Plain 3/8	1
43	364-516	Nut, Hex Lock Thin, 5/16-18	4				

\*(See Transmission Page)

CHASSIS & DRIVE ASSEMBLY



## PEERLESS "750"-A TRANSMISSION

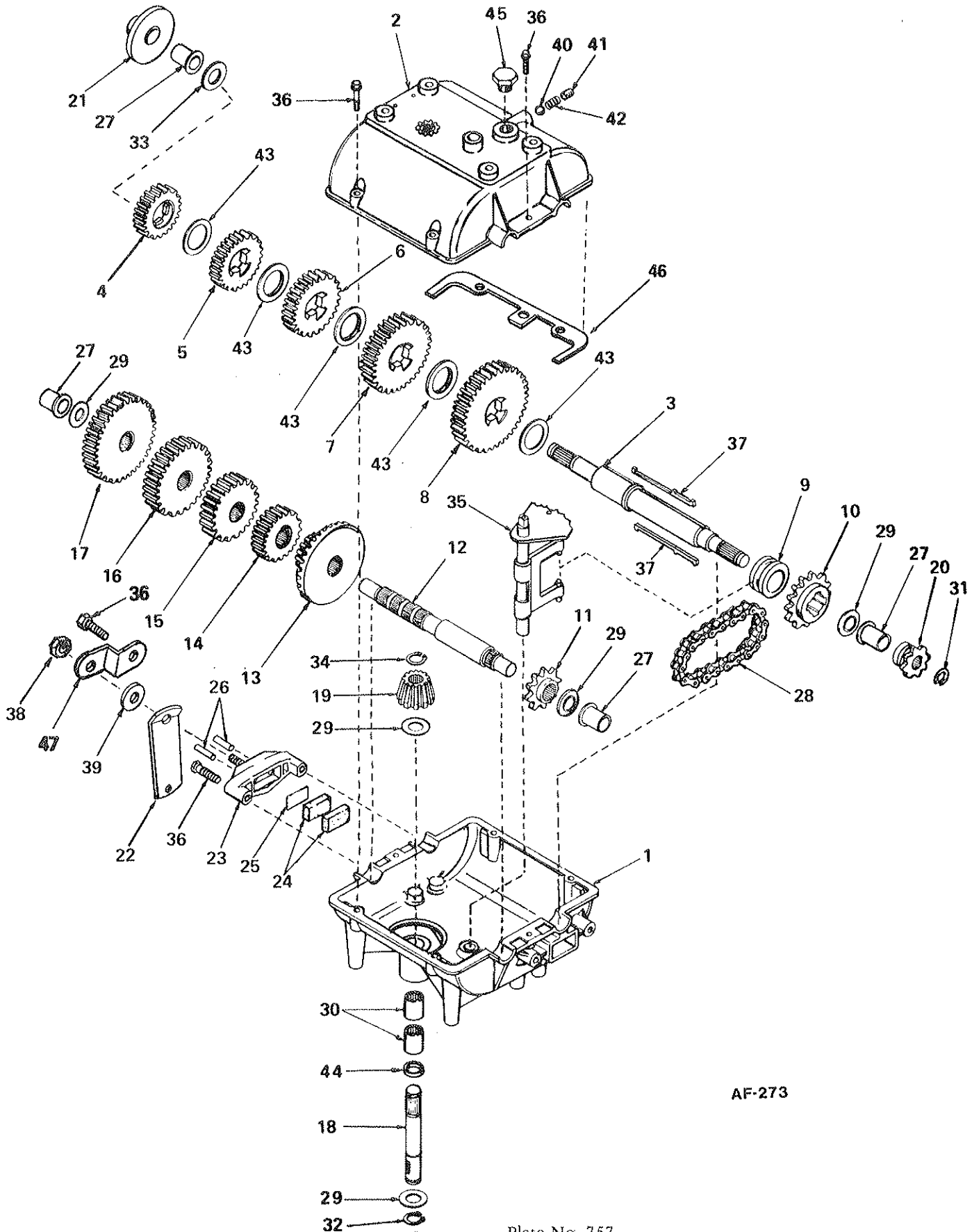
## PARTS LIST

Ref. No.	Part No.	Description
1	770061	Case, Transmission
2	772083	Cover, Transmission
3	776161	Shaft, Output & Brake
4	778121A	Gear, Spur (20 teeth)
5	778122A	Gear, Spur (22 teeth)
6	778123A	Gear, Spur (25 teeth)
7	778124A	Gear, Spur (30 teeth)
8	778125	Gear, Spur (35 teeth)
9	784266	Collar, Shift
10	786060	Sprocket (14 teeth)
11	786061	Sprocket (10 teeth)
12	776134	Shaft, Counter
13	778109	Gear, Bevel (42 tooth & 15 tooth spur gear)
14	778126A	Gear, Spur (20 teeth)
15	778127A	Gear, Spur (25 teeth)
16	778128A	Gear, Spur (28 teeth)
17	778129A	Gear, Spur (30 teeth)
18	776135	Shaft, Input
19	778113A	Bevel Pinion, Input
20	786047	Sprocket (8 teeth)
21	790003	Disk, Brake
22	790013	Lever, Brake
23	790025	Holder, Brake pad
24	790006	Pad, Brake
25	790007	Plate, Brake pad
26	786026	Pin, Dowel
27	780105A	Bushing, Flanged
28	786062	Chain, Roller (No. 41 chain, 22 links)
29	780072	Washer, Thrust
30	780086	Bearing, Needle
31	792072	Ring, Retaining
32	792035	Ring, Retaining
33	780109	Washer
34	788040	Ring, Retaining
35	784267	Rod & Fork Assy., Shift
36	792073	Screw, Hex. Hd. Taptite, 1/4-20x2 1/4
37	792089A	Key
38	792075	Nut, Lock, 5/16-24
39	792076	Washer, Flat, 5/16
40	792077	Ball, Steel, 5/16"
41	792078	Screw, Set, 3/8-16x3/8
42	792079	Spring
43	780108	Washer, Thrust
44	792001	"O" Ring
45	792074	Plug
46	788054	Gasket
47	786046	Bracket

# PEERLESS TRANSMISSION

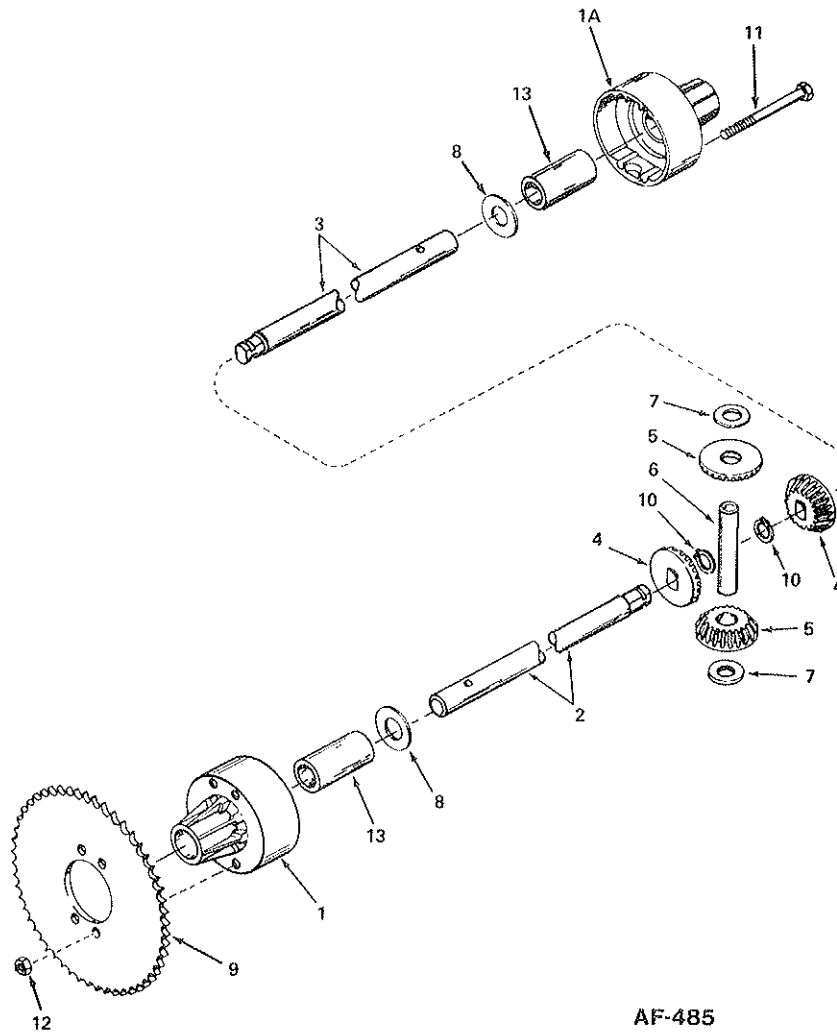
## MODEL 750-A

Five Speed



AF-273

PEERLESS DIFFERENTIAL  
MODEL 100-038



AF-485

Ref. No.	Part No.	Description
1	774484	Housing, Differential carrier (Incl. No. 13)
1A	774485	Housing, Differential carrier (Incl. No. 13)
2	774583	Axle (8-3/4" long)
3	774584	Axle (18-1/8" long)
4	778067	Gear, Bevel
5	778068	Gear, Pinion
6	786040	Pin, Drive
7	780096	Washer, Thrust
8	780001	Washer
9	1549-P1	Sprocket
10	792018	Ring, Snap
11	792041	Screw, Flanged Hex Hd., 5/16-18 x 3-3/4
12	792042	Nut, Lock, 5/16-18
13	780077	Bushing

Order all parts from your nearest PARKER PARTS DISTRIBUTORS. If unable to locate the part from your Parts Distributor, forward your order to PARKER SWEEPER COMPANY for a quote.

Hart-Greer, Inc.  
900 N. 24th St.  
BIRMINGHAM, AL 35203

Lawn & Garden Supply Co.  
2222 N. 27th Ave.  
PHOENIX, AZ 85017

H. V. Carter Company  
1700 E. 14th St.  
OAKLAND, CA 94606

Tarzana Mower & Engine Parts, Inc.  
6075 Reseda Blvd.  
RESEDA, CA 91335

Colorado Outdoor Equip., Inc.  
527 W. Evans  
DENVER, CO 80223

Roberts Supply, Inc.  
2698 S. Orange Blossom Trail  
ORLANDO, FL 32805

Lawn & Turf, Inc.  
2570 Old Covington Hwy.  
CONYERS, GA 30207

Small Engine Clinic, Inc.  
98019 Kam Hwy.  
HONOLULU, HAWAII 96701

Tyner Distributing, Inc.  
5437 Kendall St.  
BOISE, ID 83706

Plante's Lawn Equipment, Inc.  
4 Grant St.  
NORTH AURORA, IL 60542

Davis Turf Products, Inc.  
435 S. Wheeling Rd.  
WHEELING, IL 60090

T. E. Bocher & Sons  
1009 W. State St.  
ALBANY, IN 47320

The Harnack Co.  
728 Commercial St.  
WATERLOO, IOWA 50701

Mid-East Power Equip. Co., Inc.  
185 Lisle Rd.  
LEXINGTON, KY 40586

Morton B. Collins  
300 Birnie Ave.  
SPRINGFIELD, MA 01106

Frost Company  
483 Wildwood St.  
WOBURN, MA 01801

Frederick Trading Co.  
7901 Trading Lane-Box 400  
FREDERICK, MD 21701

Adams Equipment, Inc.  
8001 Newell St.  
SILVER SPRINGS, MD 20910

Power Equipment Distributors, Inc.  
340 N. Hubbard  
MT CLEMENS, MI 48043

R. L. Gould Company  
3711 N. Lexington Ave.  
ST. PAUL, MN 55112

Hance Distributors  
420 Excelsior Ave., W.  
HOPKINS, MN 55343

Gunthers Service & Supply  
7320 Wornall Rd.  
KANSAS CITY, MO 64114

Henzler, Inc.  
2015 Lemay Ferry Rd.  
ST. LOUIS, MO 63125

Port Huron Machinery & Supply  
801 Q St.  
LINCOLN, NE 68508

George Smith & Sons, Inc.  
322 Broadway  
BETHPAGE, L.I., NY 11714

Grasslands Equip. & Irrigation  
892 Troy Schenectady Rd.  
LATHAM, NY 12110

Henry W. O'Neill & Associates, Inc.  
410 N. Goodman St.  
ROCHESTER, NY 14609

The Messinger Company, Inc.  
374 Avery St.  
ROCHESTER, NY 14606

Smith Hardware Co.  
515 N. George St.  
GOLDSBORO, NC 27530

Hayward Distributing Co.  
460 Neilston St.  
COLUMBUS, OH 43215

Schroeder Sales & Service, Inc.  
1144 Harrison Ave.  
HARRISON, OH 45030

**PARKER SWEEPER COMPANY**  
P.O. Box 1728  
SPRINGFIELD, OH 45501  
Phone: 513-323-4901

Wait Sales Company  
406-10 S. Peoria, Box 1015  
TULSA, OK 74120

Baltz & Son Co.  
9817 E. Burnside  
PORTLAND, OR 97216

Monroe Machinery & Supplies, Inc.  
1421 S. E. Gidson St.  
PORTLAND, OR 97242

Lawn & Golf Supply Co.  
647 Nutt Rd.  
PHOENIXVILLE, PA 19460

Gardenville Supply Co., Inc.  
Route 611  
PIPERSVILLE, PA 18947

Bluemont Co.  
11125 Frankstown Rd.  
PITTSBURGH, PA 15235

Niemeyer Corp.  
1135 Phoenixville Pike, Box 1477  
WEST CHESTER, PA 19360

Fidelity Sales Corp.  
6331 Baum Dr.  
KNOXVILLE, TN 37919

Fidelity Sales Corp.  
447 E. Market St.  
KINGSPORT, TN 37662

Fidelity Sales Corp.  
6044 Lee Highway  
CHATTANOOGA, TN 37421

Goldthwaite's of Dallas, Inc.  
2700 Forest Ln., Box 34660  
DALLAS, TX 75234

Goldthwaite's of Ft. Worth  
1401 Foch St.  
FT. WORTH, TX 76107

Goldthwaite's of Houston, Inc.  
220 Farris  
HOUSTON, TX 77025

Goldthwaite's of Texas, Inc.  
10751 Sentinel  
SAN ANTONIO, TX 78217

Boyd Martin Company  
1260 N. W. Temple  
SALT LAKE CITY, UT 84116

Wetsel Seed Co.  
941 N. Liberty  
HARRISONBURG, VA 22801

The Bentley Company  
4126 Airport Way, S.  
SEATTLE, WA 98108

Northwest Mower, Inc.  
926 N. 165th St.  
SEATTLE, WA 98133

Interstate Radiator &  
Lawn Mower Co.  
1611 4th Ave.  
CHARLESTON, WV 25312

Reinders Brothers, Inc.  
13400 Watertown Plank Rd.  
ELM GROVE, WI 53122

R. L. Gould  
344 Berger St.  
GREEN BAY, WI 54302

Van's Supply & Equip. Co., Inc.  
2640 S. Ashland Ave.  
GREEN BAY, WI 54303

Powertek Equipment  
9766 51 Avenue  
EDMONTON, ALBERTA,  
CANADA T6E 0A6

Shepherd Bros. Equip., Ltd.  
19575 North 10 Highway  
LANGLEY, B.C.,  
CANADA V3A 4R8

Fallis Turf Equip., Ltd.  
11951 Forge Place  
RICHMOND, B.C.,  
CANADA V7A 4V9

G. C. Duke Lawn Equipment  
1184 Plains Rd., East  
BURLINGTON, ONTARIO,  
CANADA L7S 1W6