



Electronic Service Manuals

This electronic document is provided as a service to our customers. We do not create the contents of the information contained in this document. Should you have detailed questions pertaining to the information contained in this document, you may contact Michco, or the manufacturer which provided the original information in this electronic deliverable. Michco's only part in this electronic deliverable was the electronic assembly process. By providing this manual on line we are not guaranteeing parts availability.

You may contact Michco through the following methods:

Phone (517) 484-9312 or (800) 331-3339

2011 N. High St. -- Lansing, Michigan -- 48906

Fax: (517) 484-9836

Email: CustServe@Michco.com

Web site: www.Michco.Com

Parts Web site: www.FloorMachineParts.Com

Order Parts on Line at:

www.FloorMachineParts.Com

Directly to Parts & Service:

By Email: **Shop@Michco.com**

By Fax: (517) 702-2041

By Voice: Use numbers above.

Serving the Cleaning Industry Since 1922

Notice: All copyrighted material remains property of original owners, all trademarks are property of respective owners. Manuals are subject to Manufacturer's reproduction limitations. Originals or reproductions were provided by manufacturers through a request. We make no warranty as to the correctness of information provided in this document and you assume all risk. By placing these manuals on line we are not declaring our corporation to be an manufacturer authorized dealer or provider, please check our web site for authorized manufacturers we represent.

Minuteman[®]
Parker[®]

Model:
PL0310B

Portable Loader

OPERATION

SERVICE

PARTS

CARE

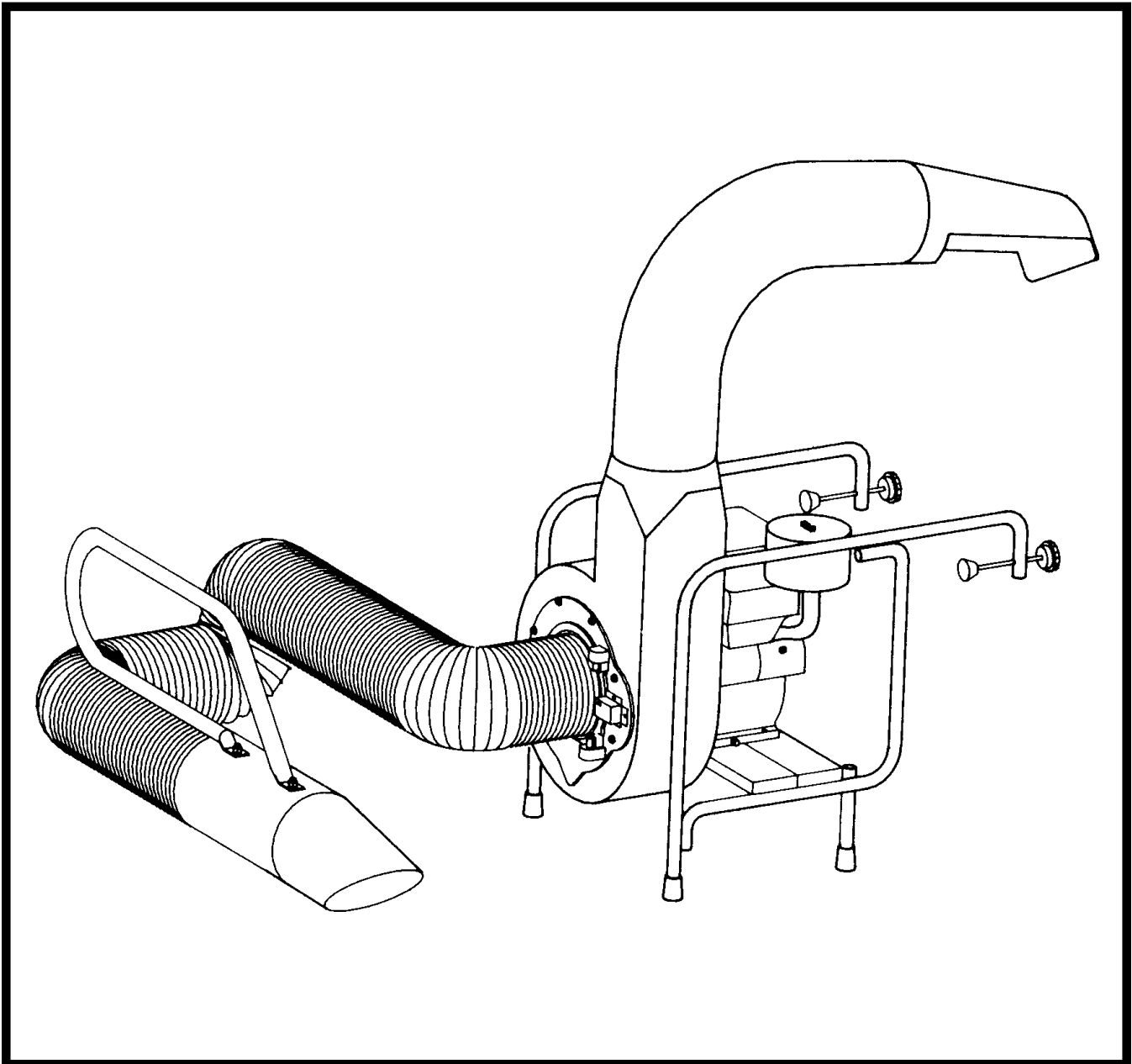


TABLE OF CONTENTS

General Safety Instructions	1-2
Warning Decal Replacement	3
Safety Interlock System	4
Operating Instructions	5-7
Repair Parts	8-12

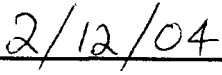
EC Declaration of Conformity

according to Directives 98/37/EC, 89/336 and 2000/14/EC

We, Parker Sweeper Company, a division of Minuteman International Incorporated of 111 South Rohlwing Road Addison Illinois 60101 USA, declare under our sole responsibility that the products PL0310B to which this declaration relates corresponds to the relevant requirements of the EC Directives 98/37/EC, 89/336 and 2000/14/EC. The following standards were used to determine compliance with the Directives: EN 292-1, EN 953, EN 811, EN 3744, and CISPR 12.



Jeff Pollack, Standards Engineer



Date

Form: EC064

Model # _____ Serial # _____

IMPORTANT SAFETY INSTRUCTIONS

READ ALL INSTRUCTIONS BEFORE USING

WARNING

- To prevent personal injury or property damage, do not attempt to start engine until all assembly steps are complete and you have read and understand the safety and operating instructions in this manual.
- Under California law, and under laws of several other states, you are not permitted to operation internal combustion's engine using hydrocarbon fuels on any forest covered, brush covered, or grass covered land, or on land with grain, hay, or other flammable agricultural crop, without an engine spark arrester in continuous effective working order. The engine on your power equipment, like most outdoor power equipment, is an internal combustion engine that burns gasoline, a hydrocarbon fuel. Therefore, your power equipment must be quipped with a spark arrester muffler in continuous effective working order. The spark arrester must be attached to the engine exhaust system in such a manner that flames or heat from the system will not ignite flammable material. Failure of the owner/operator of the equipment to comply with this regulation is a misdemeanor under California law, and may also be a violation of other state and/or federal regulations, laws, ordinances, or codes. Contact your local fire marshal or forest service for specific information about what regulations apply in your area.
- Wear approved safety glasses when operating this equipment. The operation of any powered machine can result in foreign objects being thrown by high-speed rotating parts.
- Wear work gloves, sturdy footwear, and hearing protection when operating this equipment.
- Remove hearing protection and watch for traffic when operating near, or when crossing roadways.
- Before inspecting or servicing any part of equipment, shut off engine, disconnect spark plug wire from spark plug, and make sure that all moving parts have come to a complete stop. Be aware that rotating blades slow down gradually after engine is shut off.
- Exercise extreme caution on slopes and avoid excessively steep slopes.
- Never leave equipment unattended when engine is running. Shut off engine and disconnect spark plug wire from spark plug before leaving equipment. Turn off fuel shut-off if equipped.
- Do not operate this equipment on a paved, gravel, or hard surface unless the collection bag is installed. Discharged material may bounce from a hard surface.
- Do not vacuum any burning or smoldering materials such as cigars, cigarettes, ashes or cinders.
- Do not vacuum areas that have been recently treated with fertilizers, pesticides or herbicides. Follow chemical manufacturer's safety instructions regarding contact with treated areas.
- Do not vacuum flammable liquids such as gasoline, kerosene, diesel fuel, paint thinner, etc.
- Never pick up or carry equipment while the engine is running.
- Walk, never run.
- Never allow children or untrained adults to operate this equipment.
- Keep the area of operation clear of all persons, particularly small children, and pets. Keep bystanders at least 25 feet away from the area of operation.

- Do not run engine in an enclosed area. Engine exhaust contains carbon monoxide gas, a deadly poison that is odorless, colorless, and tasteless.
- Do not operate this equipment near buildings, windows, or air conditioners.
- Do not allow hands or any other part of the body or clothing inside the vacuum inlet.
- Do not start engine or operate this equipment with any safety guards or housing removed.
- Before removing or installing collection bag, shut off engine, disconnect spark plug wire from spark plug, and allow all moving parts to come to a complete stop.
- Empty the collection bag after each use. Decomposing debris could generate enough heat to catch fire. Before emptying the collection bag, shut off engine, disconnect spark plug and allow all moving parts to come to a complete stop.
- If equipment jams or becomes clogged, immediately shut off engine, disconnect spark plug, and allow all moving parts to come to a complete stop. Use only a wooden stick to clear away debris.

DANGER

Gasoline is highly flammable and its vapors are explosive. To prevent personal injury or property damage:

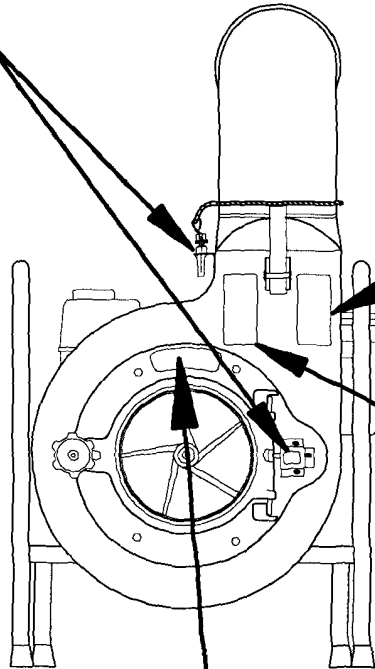
- Do not add fuel if engine is running or still hot from recent operation. Allow engine to cool for at least three minutes.
- Do not fill fuel tank indoors. After filling, wipe up any spills and move away from gasoline fumes before starting engine.
- Do not allow open flame, matches, or smoking in area.
- Fill fuel tank with fresh, clean unleaded regular automotive gasoline, (leaded regular and unleaded or leaded premium grades of gasoline are acceptable substitutes).
- Do not mix oil with gasoline.
- Clean the area around the fuel fill cap and remove the cap from the fuel tank. Insert a clean funnel into the fuel tank.
- Fill the tank to 1/2 inch below the bottom of the filter neck to provide space for any fuel expansion.
- Reinstall the fuel fill cap securely and wipe up any spilled gasoline.

SAVE THESE INSTRUCTIONS

SAFETY DECALS

SAFETY
INTERLOCK
SWITCH
715313

715313



STOP FAN BEFORE
REMOVING HOUSING
FAN ← ROTATION

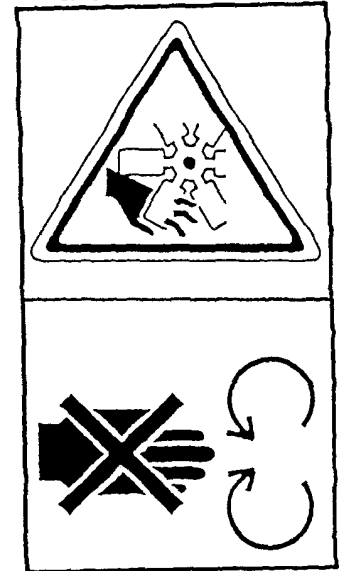
85-151-A

KEEP A SAFE DISTANCE
FROM THE MACHINE



715301

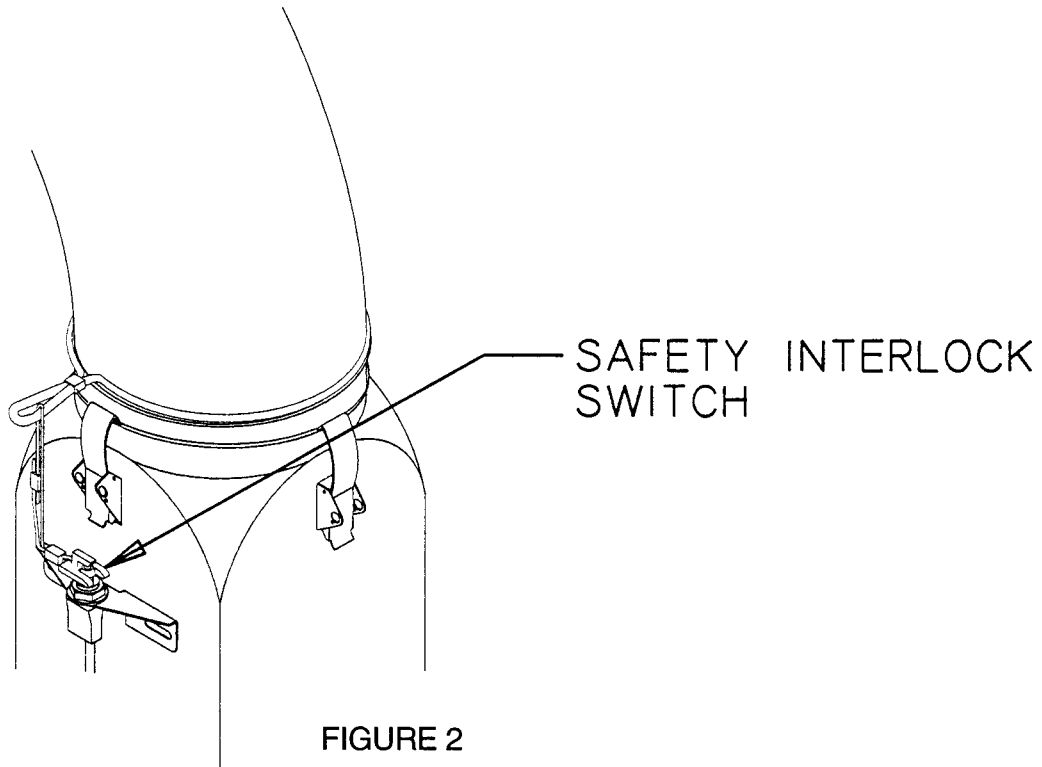
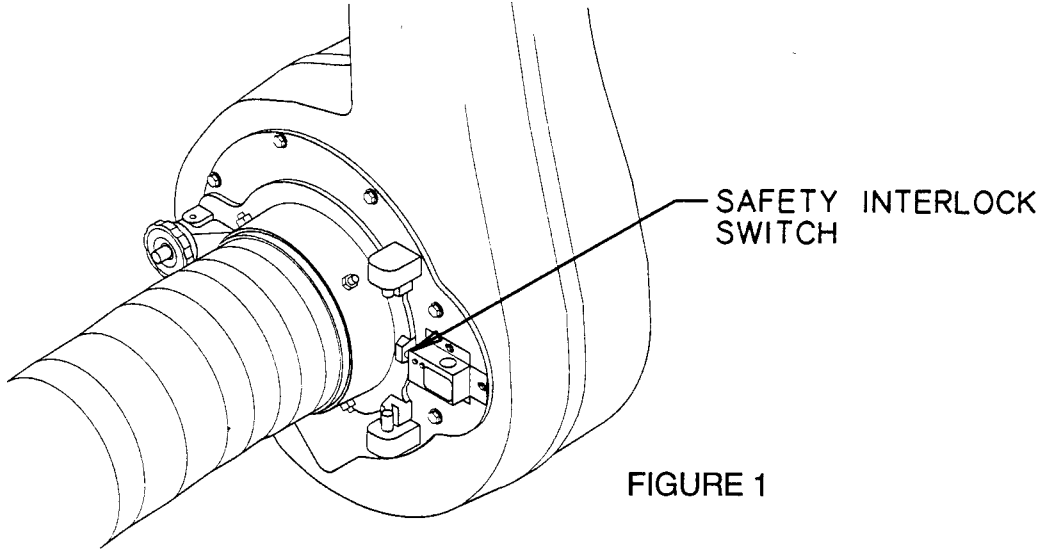
DO NOT OPEN OR REMOVE
SAFETY SHIELDS WHILE
ENGINE IS RUNNING



715300

SAFETY INTERLOC SYSTEM

This equipment incorporates two safety interloc systems. Figure 1 below is for the front vacuum housing assembly. Figure 2 is for the exhaust chute. Both interlocks must be engaged for engine to start.



ASSEMBLY INSTRUCTIONS

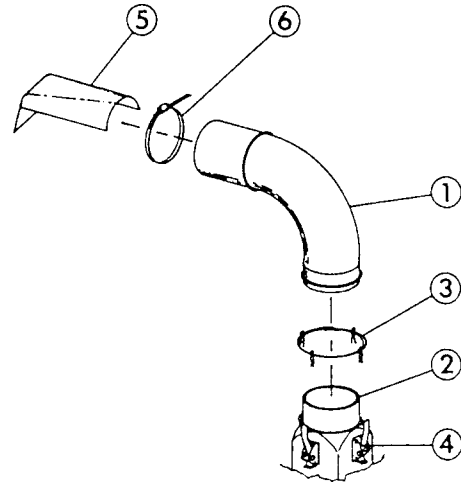
YOUR SAFETY IS OUR CONCERN. READ ALL SAFETY RULES AND OPERATING INSTRUCTIONS BEFORE ATTEMPTING TO OPERATE THIS EQUIPMENT. FAILURE TO FOLLOW SAFETY RULES AND OPERATING INSTRUCTIONS MAY RESULT IN SERIOUS INJURY.

UNPACKING UNIT

1. Completely unpack the unit from carton. Do not discard any packing, inserts or the carton until the unit is completely assembled.
1. If anything is missing, notify your dealer or local distributor to obtain parts needed. If unable to find parts locally, contact the Parker Sweeper Company.

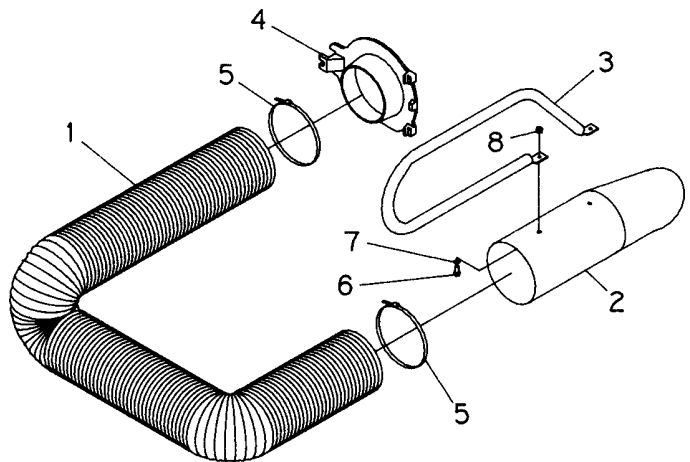
ASSEMBLING ELBOW TO BLOWER HOUSING

1. Place elbow (1) down over neck of blower housing (2) with long end of elbow (1) back over engine.
2. Remove locking pins of pin assembly (3) from latches (4). Open latches (4) and hook ends over small bead around bottom of elbow (1).
3. Close latches (4) and replace locking pins to small hole in latches.
4. Place clamp (6) over top end of elbow (1) approximately 4 inches from end. Do Not Tighten.
5. Place deflector (5) of top end of elbow (1) under clamp (6).
6. Slide deflector (5) until there is approximately 7 inches, opening, between end of elbow and deflector. Tighten clamp (6).



ASSEMBLING HOSE

1. Remove hex head bolts (6), flatwashers (7) and hex lock nuts (8) from handle (3).
2. Align holes in handle (3) with those in intake tube (2). **NOTE:** Handle (3) should extend away from angled end of intake tube.
3. Assemble flatwashers (7) to bolts (6) and insert up through intake tube (2) and handle (3).
4. Replace lock nuts (8) and tighten.
5. Assemble one step clamp (5) to each end of hose (1).
6. Slide one end of hose (1) over rear of intake tube (2), under handle, and tighten clamp (5).
7. With hose (1) straight and handle (3) upward, assemble free end of hose (1) over neck of collar (4) with flat edge of collar to the bottom. Tighten clamp (5).

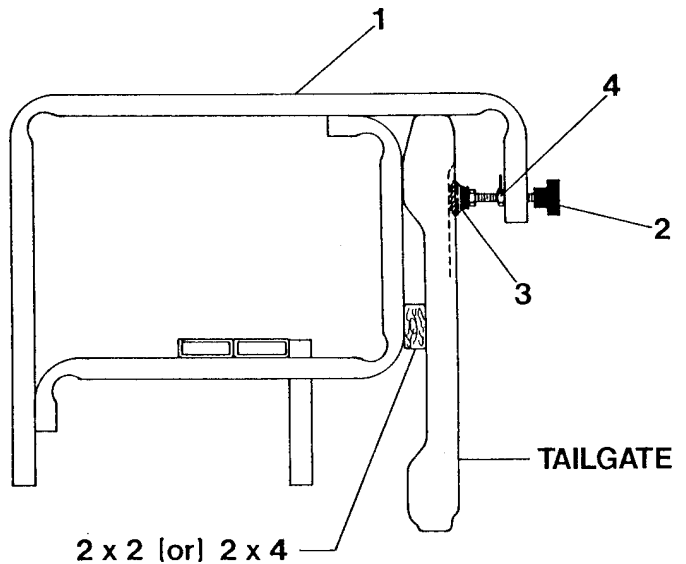


ASSEMBLY INSTRUCTIONS

ASSEMBLING UNIT TO TAILGATE OF TRUCK

NOTE: Before assembling unit it may be desirable to purchase a rubber matt or some other covering to place over tailgate, where unit is to be assembled, to protect its finish during assembly and operation of the unit.

1. With an able-bodied person to assist, lift unit onto tailgate of truck.
2. Place 2x2 or 2x4 between lower back edge frame (1) and tailgate.
3. Holding unit, so back edge of frame (1) is flush with tailgate, turn adjusting knob on tailgate clamps (2) until rubber rings (3) are tight against inside of tailgate.
4. Turn half wing nuts (4) until tightly against frame (1) to lock unit in place.



CAUTION! IT IS UNSAFE TO TRANSPORT LOADER WHILE ON TAILGATE.

ASSEMBLING HOSE TO UNIT

1. Place hinge bosses of collar behind hinge extensions on front cover. Swing collar in, flat against front cover, being sure to engage safety kill switch.
2. Place flatwasher and adjusting knob, on pivot bolt, over collar and tighten to secure hose.

CAUTION! For NO REASON should the hose be removed from the collar while it is operable. This will allow unit to remain running with no covering over intake opening in blower housing. Loose items of clothing could be drawn into unit causing serious injury. Feeding debris into open housing by hand could also cause serious injury.

NOTE: This unit is equipped with a safety kill switch. When the collar is removed from front cover the kill switch grounds the engine, stopping unit.

OPERATING AND MAINTENANCE INSTRUCTIONS

READ SAFETY AND OPERATING INSTRUCTIONS BEFORE OPERATING EQUIPMENT

CAUTION! Some method of containing debris must be used. It must fit tightly around elbow and have no major openings that would allow debris to fly out. Running the unit without a container could cause damage to truck and seriously injure operator or persons nearby.

An optional collector bag, MA-607, is available from Parker Sweeper for containing debris being picked up; makes removal and dumping of debris much easier.

WARNING! Although unit is equipped with a safety kill switch, NEVER reach into blower housing to remove clogs or for maintenance work without first removing the spark plug from engine. This will prevent false starting of engine and also allow fan to move freely.

CAUTION! The engine contains NO OIL. Before starting the engine, make sure the crankcase is filled with the proper amount and type of oil. Refer to the engine operating manual for proper lubrication of the engine. Read the engine manual carefully before operating unit. Be sure to know how to start and stop the engine.

1. Care should be taken not to plug the hose by forcing too much debris into it at one time.
2. Stiff debris such as sticks and tree trimmings should not be picked up with the hose, as they may plug the hose.
3. If the hose becomes plugged, the engine must be shut off.

4. Remove hose from blower housing, remove all blockage from the hose and replace to blower housing.

5. Best vacuum is obtained when engine is run at full throttle.

6. Before using the machine to pick up debris, police the area to be cleaned first, picking up any large objects such as cans, toys, bones and chunks of wood. If these pass through the machine, they could damage the impeller or bend the engine crankshaft.

DANGER: Improper use of this equipment may result in serious injury.

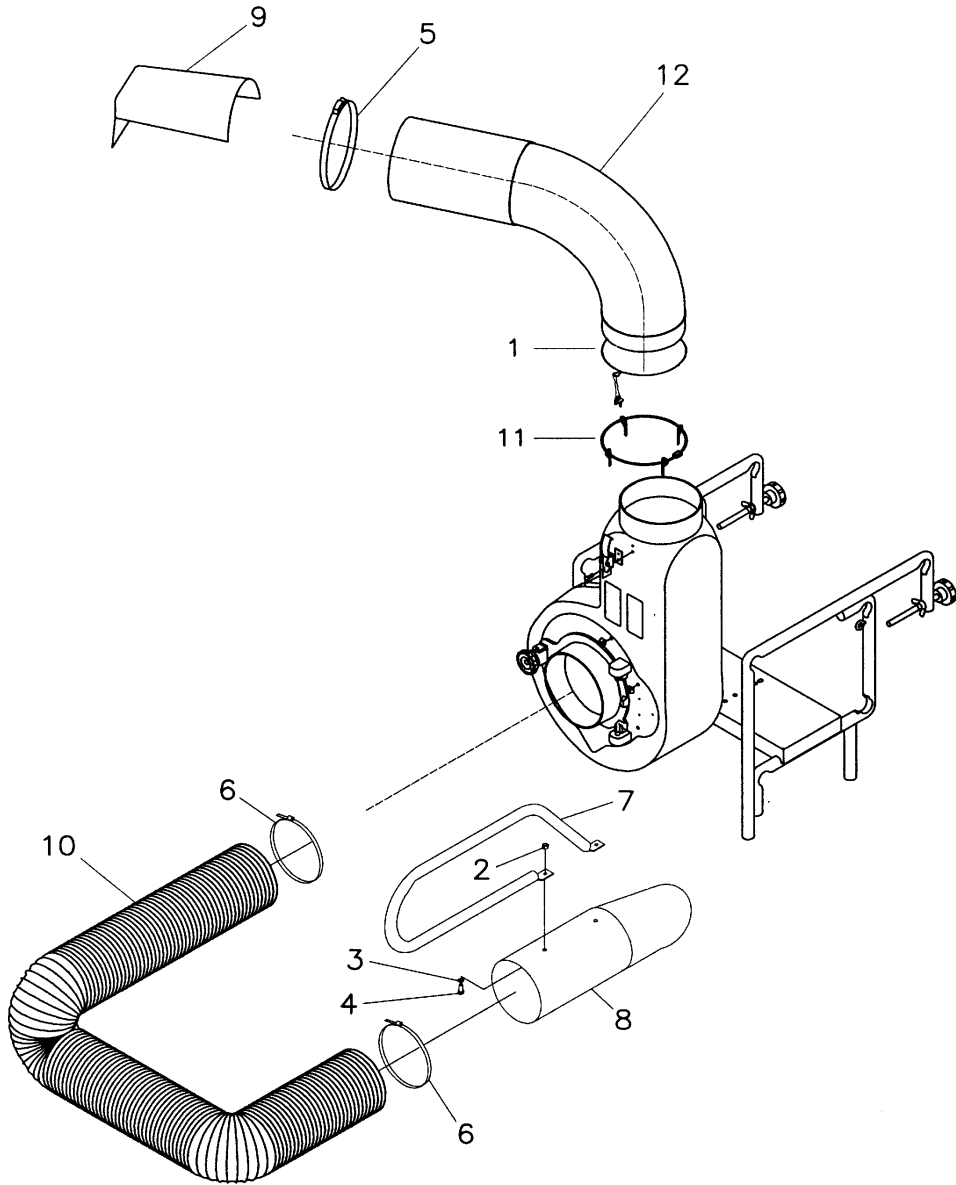
7. For servicing and operating instructions for engine refer to Engine Manufacturers Service Manual. Careful attention to care of air cleaner and crankcase lubrication instructions will insure longer engine life. KEEP ENGINE CLEAN.

8. Clean the engine air cleaner every 10 hours of operation. (Do so more often under dusty conditions.) If it is punctured, torn, or uncleanable it should be replaced.

9. Be sure to keep the oil at the proper level in the engine. Check the oil level each time you fill the fuel tank.

WARNING: When refueling, care should be taken not to spill fuel on hot engine. This could cause the fuel to ignite, resulting in serious injury to operator or damage to unit.

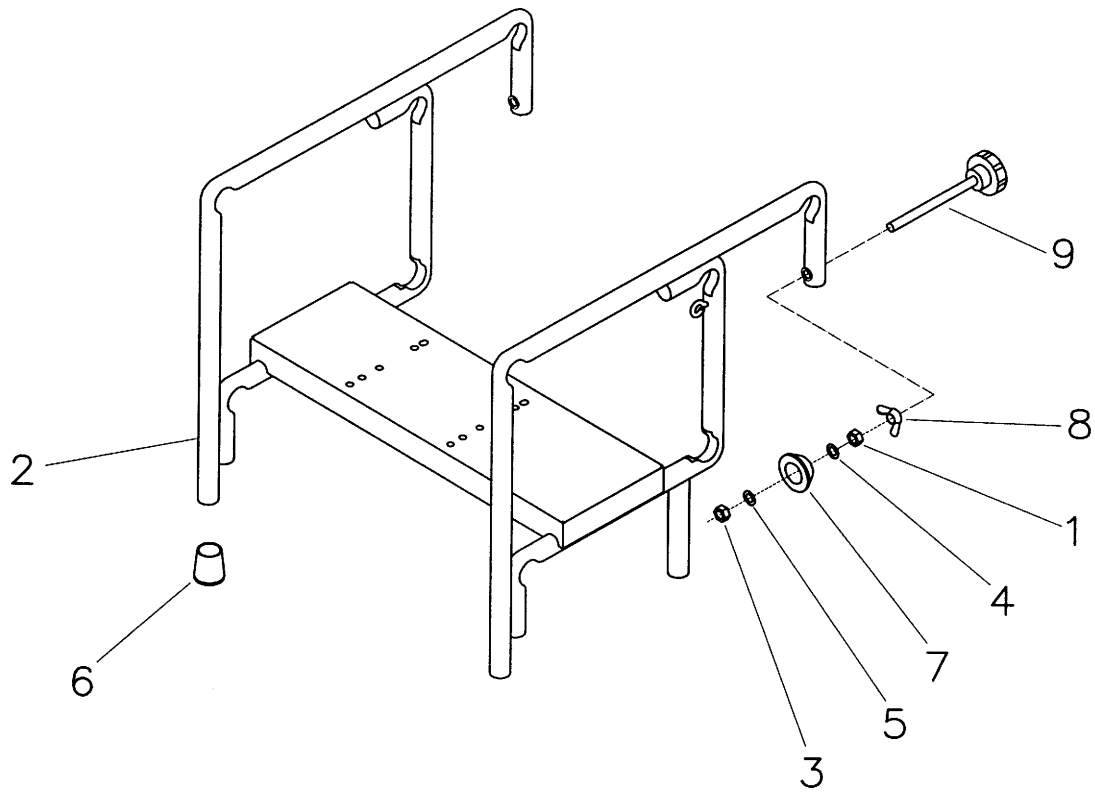
ELBOW & HOSE ASSEMBLY



PARTS LIST

Item	Part No.	Qty.	Description
1	350193	1	Lanyard Strap Asy
2	711373	2	Nut, Nyloc 1/4-20
3	711505	2	WSR-Flat 1/4
4	713001	2	BLT HH 1/4-20 x .62 #5
5	84-152-C	1	Clamp
6	84-389-C	2	Step Clamp
7	86-128-D	1	Handle VL
8	86-137-D	1	Intake Tube Asy
9	86-138-D	1	Deflector Portableloader
10	87-131-B	1	Hose, 8" Dia. x 16' Long
11	88-147-C	1	Pin Assembly
12	88-150-C	1	Elbow & Decal Asy

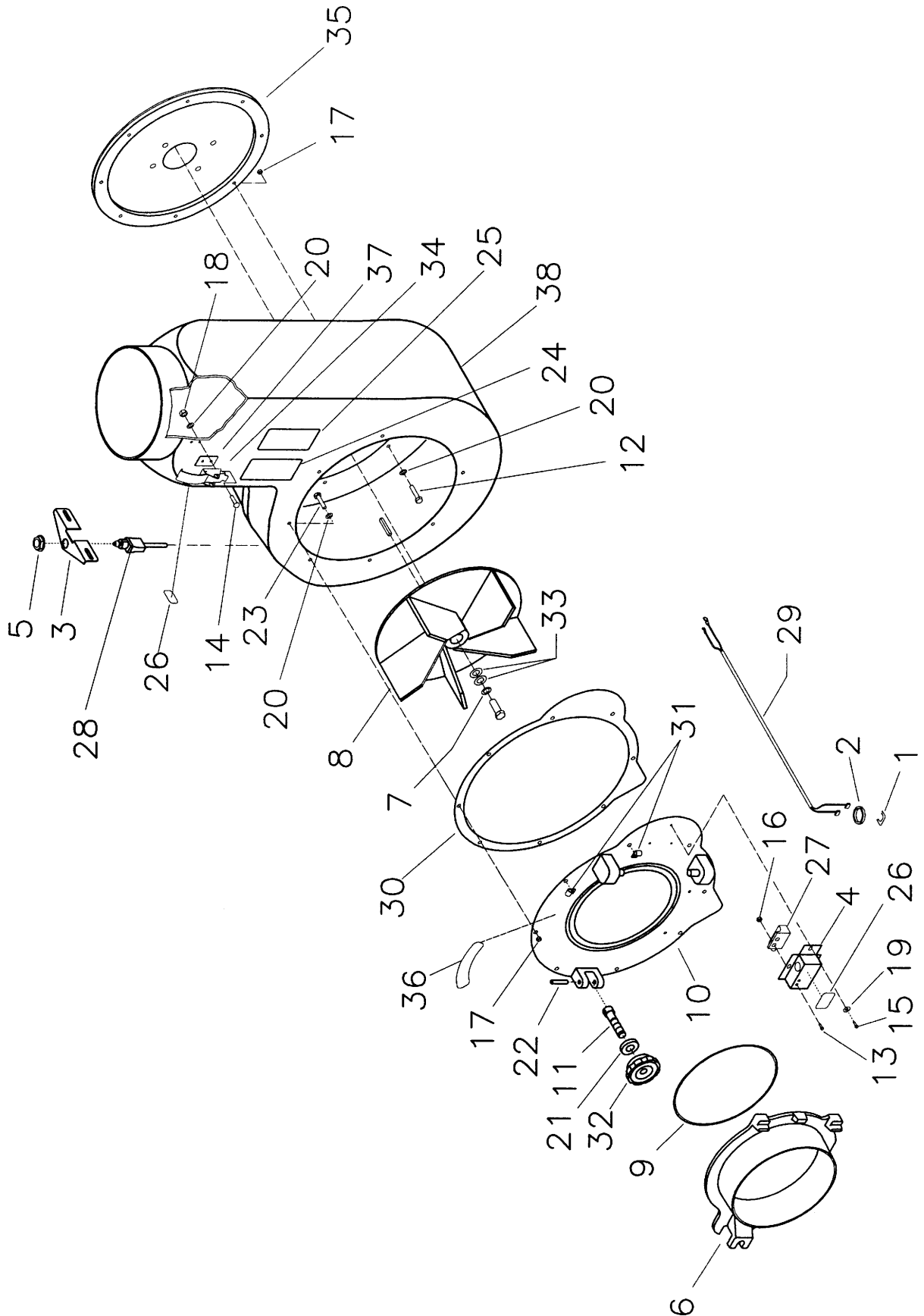
ENGINE MOUNT ASSEMBLY



PARTS LIST

Item	Part No.	Qty.	Description
1	340816	2	Nut-Hex Jam
2	350245	1	Weldment Frame
3	364-816	2	Nut-Nyloc 1/2-13 Half
4	58-05-A	2	WSR-FLT .516 x 1.625 x .075
5	711509	2	WSR-FLT 1/2
6	88-111-B	4	Leg Tip White Rubber
7	88-112-B	2	Ring, Rubber Foot
8	88-114-A	2	Nut-Wing
9	88-117-B	2	Tailgate Clamp

ENGINE MOUNT ASSEMBLY

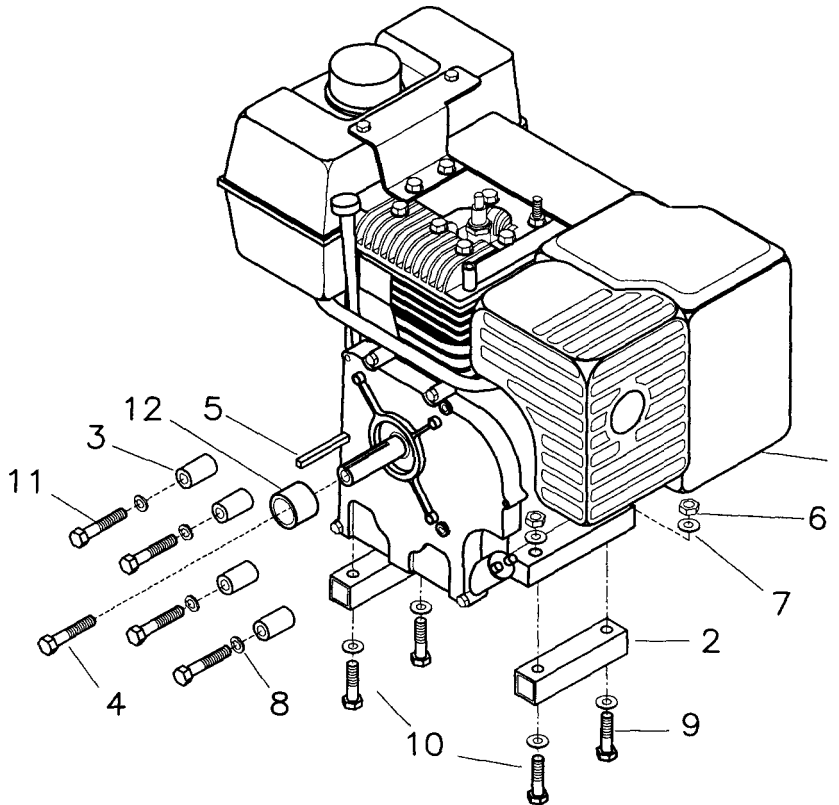
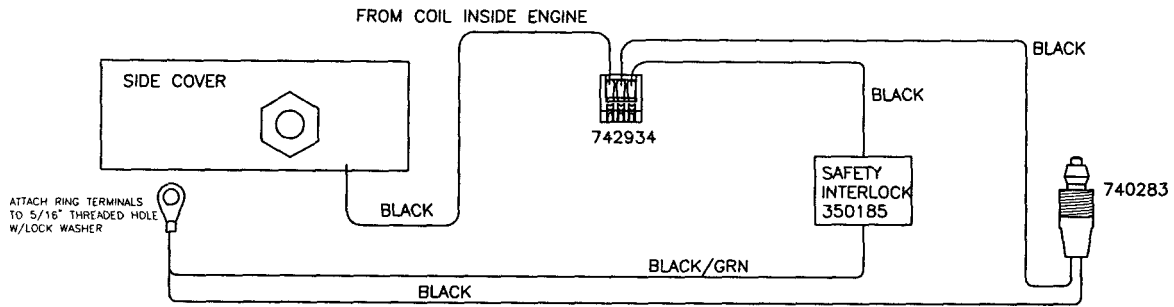


PARTS LIST

Item	Part No.	Qty.	Description
1	100028	1	Strain Relief
2	101008	1	Grommet, Rubber
3	350129	1	Switch Bracket for 7050-10
4	350130	1	Switch Box 6400
5	350135	1	Switch Nut 6250
6	350152	1	Collar CV
7	350242	1	WSR-Belleville 7/16
8	350700BAL	1	Steel Fan Wldmt Balanced
9	63-190-A	1	O Ring Gasket
10	63-191-D	1	Casting-Cover Front
11	63-192-A	1	Pivot Bolt
12	65-416-14	8	Bolt-HH #5
13	710130	2	SCR-MC 8/32 x .62 Nickel
14	710180	8	SCR-MC 1/4-20 x .75 Zinc
15	711124	3	SCR-ST-B 10 x .75 NI
16	711372	2	Nut-Nyloc 8-32
17	711373	8	Nut-Nyloc 1/4-20
18	711377	8	Nut-Nyloc 1/4-20
19	711503	3	WSR-FLT #10
20	711505	8	WSR-FLT 1/4
21	711509	1	WSR-FLT 1/2
22	711661	1	Pin-Roll .250 x 1 3/4
23	713003	8	Bolt-HH 1/4-20 x 1.00 #5
24	715300	1	Decal-Warning Fingers
25	715301	1	Decal-Warning Blower
26	715313	2	Decal Safety Inter Loc
27	740282	1	Switch Delta 6451
28	740283	1	Switch Delta 7050-10
29	740293	1	Wire Assembly
30	75-03-C	1	Gasket Front Cover
31	78-120-A	3	Clamp-P
32	80-29-A	1	Knob Plastic
33	82-138-B-3	2	WSR-Area Vac 35
34	84-245-A	4	Latch
35	84-372-C	1	Back Cover & Gasket
36	85-151-A	1	Decal-Stop Fan Before
37	88-172-A	4	Spacer
38	SA-1558-C	1	Blower Hsg Lining Asy

10 HP ENGINE

SAFETY INTERLOC WIRING DIAGRAM



PARTS LIST

Item	Part No.	Qty.	Description
1	350602	1	Engine 10HP B/S 205432
2	360159	2	Spacer, Engine Mount
3	57-105-A	4	Spacer-.377 x .626 x 1
4	60-716-24	1	BLT-HH 7/16-20 x 1.5 #5
5	63-130-A	1	Key 1/4 x 1 3/4 Long
6	711374	4	Nut-Nyloc 5/16-18
7	711506	8	WSR-FLT 5/16 (Narrow) ST PL
8	711546	4	WSR-Helical 3/8
9	713033	2	BLT-HH 5/16-18 x 2 1/2 #5
10	713037	2	BLT-HH 5/16-18 x 3.5 #5
11	713045	4	BLT-HH 3/8-16 x 1.75 #5
12	73-415-A	1	Spacer-1.03 x 2 x .875

LIMITED WARRANTY

The Parker Sweeper Company warrants to the original purchaser/user that this product is free from defects in workmanship and materials under normal use and service for a period of two years from date of purchase. In addition, Parker Sweeper Company will, at its option, honor labor warranty claims for the first 12 months from date of sale, provided such claims are submitted through and approved by factory authorized repair stations. Parker Sweeper Company will, at its option, repair or replace without charge, except for transportation costs, parts that fail under normal use and service when operated and maintained in accordance with the applicable operation and instruction manuals.

This warranty does not apply to normal wear, or to items whose life is dependent on their use and care, such as belts, cords, switches, hoses, rubber parts, electrical motor components or adjustments. Parts not manufactured by Parker Sweeper Company such as engines, batteries, battery chargers, hydraulic pumps, and tires are covered by and subject to the warranties and/or guarantees of their manufacturers. Please contact Parker Sweeper Company for procedures in warranty claims against these manufacturers.

Special warning to purchaser — Use of replacement filters and/or prefilters not manufactured by Parker Sweeper Company or its designated licensees, will void all warranties expressed or implied.

A potential health hazard exists without exact original equipment replacement.

All warranted items become the sole property of Parker Sweeper Company or its original manufacturer, whichever the case may be.

Parker Sweeper Company disclaims any implied warranty, including the warranty of merchantability and the warranty of fitness for a particular purpose. Parker Sweeper Company assumes no responsibility for any special, incidental or consequential damages.

This limited warranty is applicable only in the U.S.A. and Canada, and is extended only to the original user/purchaser of this product. Customers outside the U.S.A. and Canada should contact their local distributor for export warranty policies. Parker Sweeper Company is not responsible for costs or repairs performed by persons other than those specifically authorized by Parker Sweeper Company. This warranty does not apply to damage from transportation, alterations by unauthorized persons, misuse or abuse of the equipment, use of non-compatible chemicals, or damage to property, or loss of income due to malfunctions of the product.

If a difficulty develops with this machine, you should contact the dealer from whom it was purchased.

This warranty gives you specific legal rights, and you may have other rights which vary from state to state. Some states do not allow the exclusion or limitation of special, incidental or consequential damages, or limitations on how long an implied warranty lasts, so the above exclusions and limitations may not apply to you.



A Minuteman International Company

World Headquarters
Minuteman International, Inc.
111 South Rohlwing Road
Addison, Illinois 60101

Minuteman Canada, Inc.
2210 Drew Road
Mississauga, Ontario
L5S 1B1

(630) 627-6900
FAX (630) 627-1130

(905) 673-3222
FAX (905) 673-5161

988302
Printed in U.S.A.