



Electronic Service Manuals

This electronic document is provided as a service to our customers. We do not create the contents of the information contained in this document. Should you have detailed questions pertaining to the information contained in this document, you may contact Michco, or the manufacturer which provided the original information in this electronic deliverable. Michco's only part in this electronic deliverable was the electronic assembly process. By providing this manual on line we are not guaranteeing parts availability.

You may contact Michco through the following methods:

Phone (517) 484-9312 or (800) 331-3339

2011 N. High St. -- Lansing, Michigan -- 48906

Fax: (517) 484-9836

Email: CustServe@Michco.com

Web site: www.Michco.Com

Parts Web site: www.FloorMachineParts.Com

Order Parts on Line at:

www.FloorMachineParts.Com

Directly to Parts & Service:

By Email: **Shop@Michco.com**

By Fax: (517) 702-2041

By Voice: Use numbers above.

Serving the Cleaning Industry Since 1922

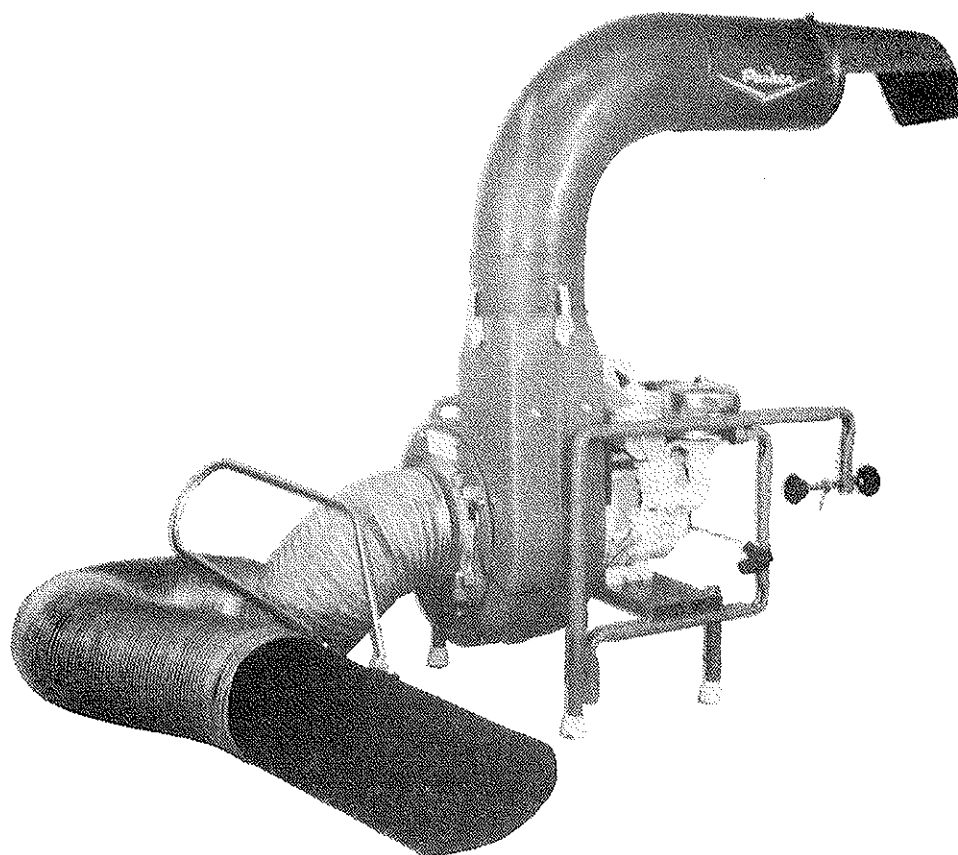
Notice: All copyrighted material remains property of original owners, all trademarks are property of respective owners. Manuals are subject to Manufacturer's reproduction limitations. Originals or reproductions were provided by manufacturers through a request. We make no warranty as to the correctness of information provided in this document and you assume all risk. By placing these manuals on line we are not declaring our corporation to be an manufacturer authorized dealer or provider, please check our web site for authorized manufacturers we represent.

OWNER'S GUIDE



PORTABLE LOADER

MODEL NO. PL-8808-I/C



AF-821

**READ THESE INSTRUCTIONS BEFORE SETTING UP
AND OPERATING MACHINE**

**BE SAFE. PROTECT YOUR FAMILY, YOUR FRIENDS, YOURSELF.
OBSERVE ALL SAFETY INSTRUCTIONS.**

PARKER SWEEPER COMPANY

Box 1728

Springfield, Ohio 45501-1728

Plate No. 1414

88-144-A

ASSEMBLY INSTRUCTIONS

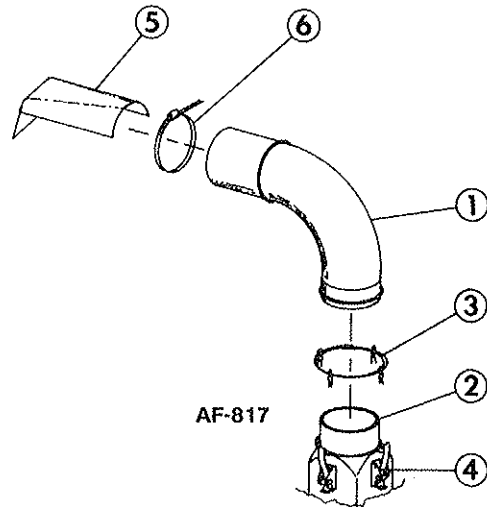
YOUR SAFETY IS OUR CONCERN. READ ALL SAFETY RULES AND OPERATING INSTRUCTIONS BEFORE ATTEMPTING TO OPERATE THIS EQUIPMENT. FAILURE TO FOLLOW SAFETY RULES AND OPERATING INSTRUCTIONS MAY RESULT IN SERIOUS INJURY.

UNPACKING UNIT

1. Completely unpack the unit from carton. Do not discard any packing, inserts or the carton until the unit is completely assembled.
2. If anything is missing, notify your dealer or local distributor to obtain parts needed. If unable to find parts locally, contact the Parker Sweeper Company.

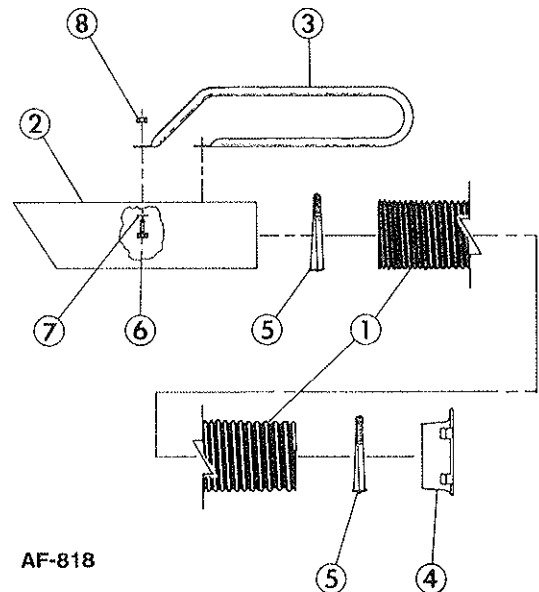
ASSEMBLING ELBOW TO BLOWER HOUSING

1. Place Elbow (1) down over neck of Blower Housing (2) with long end of Elbow (1) back over Engine.
2. Remove locking pins of Pin Assembly (3) from Latches (4). Open Latches (4) and hook ends over small bead around bottom of elbow (1).
3. Close Latches (4) and replace locking pins to small hole in Latches.
4. Place Clamp (6) over top end of Elbow (1) approximately 4 inches from end. Do Not Tighten.
5. Place Deflector (5) on top end of Elbow (1) under Clamp (6).
6. Slide Deflector (5) until there is approximately 7 inches, opening, between end of Elbow and Deflector. Tighten Clamp (6).



ASSEMBLING HOSE

1. Remove Hex Hd. Bolts (6), Flatwashers (7) and Hex Lock Nuts (8) from Handle (3).
2. Align holes in Handle (3) with those in Intake Tube (2).
NOTE: Handle (3) should extend away from angled end of Intake Tube.
3. Assemble Flatwashers (7) to Bolts (6) and insert up through Intake Tube (2) and Handle (3).
4. Replace Lock Nuts (8) and Tighten.
5. Assemble one Step Clamp (5) to each end of Hose (1).
6. Slide one end of Hose (1) over rear of Intake Tube (2), under Handle, and tighten Clamp (5).
7. With Hose (1) straight and Handle (3) upward, assemble free end of Hose (1) over neck of Collar (4) with flat edge of Collar to the bottom. Tighten Clamp (5).



**SAFETY IS IMPORTANT!
DO NOT IGNORE IT!
OBSERVE IT!
BE SAFE!**

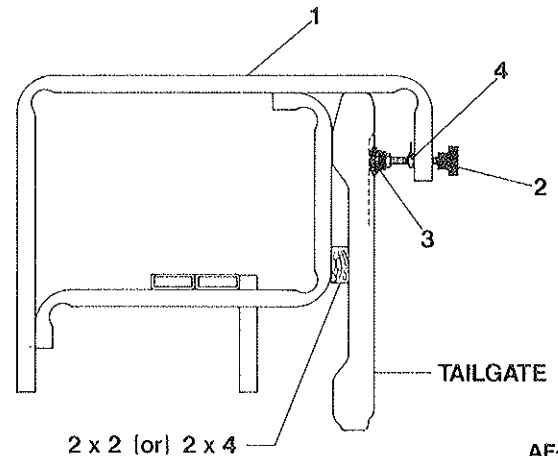
ASSEMBLY INSTRUCTIONS

ASSEMBLING UNIT TO TAILGATE OF TRUCK

NOTE: Before assembling unit it may be desirable to purchase a rubber mat or some other covering to place over tailgate, where unit is to be assembled, to protect its finish during assembly and operation of the unit.

1. With an able-bodied person to assist, lift unit onto tailgate of truck.
2. Place a 2x2 or 2x4 between lower back edge Frame (1) and tailgate.
3. Holding unit, so back edge of Frame (1) is flush with tailgate, turn adjusting knob on Tailgate Clamps (2) until rubber Rings (3) are tight against inside of tailgate.
4. Turn Half Wing Nuts (4) until tightly against Frame (1) to lock unit in place.

CAUTION! IT IS UNSAFE TO TRANSPORT LOADER WHILE ON TAILGATE.



AF-819

ASSEMBLING HOSE TO UNIT

1. Place hinge bosses of Collar behind hinge extensions on Front Cover. Swing Collar in, flat against Front Cover, being sure to engage Safety Kill Switch.
2. Place Flatwasher and Adjusting Knob, on pivot bolt, over Collar and tighten to secure Hose.

NOTE: The unit is equipped with a safety kill switch. When the collar is removed from front cover the kill switch grounds the engine, stopping unit.

CAUTION! For NO REASON should the hose be removed from the Collar while unit is operable. This will allow unit to remain running with no covering over intake opening in Blower Housing. Loose items of clothing could be drawn into unit causing serious injury. Feeding debris into open Housing by hand could also cause serious injury.

OPERATING INSTRUCTIONS

CAUTION! Some method of containing debris must be used. It must fit tightly around Elbow and have no major openings that would allow debris to fly out. Running the unit without a container could cause damage to truck and seriously injure operator or persons nearby.

An optional collector Bag, MA-607, is available from Parker Sweeper for containing debris being picked up. Makes removal and dumping of debris much easier.

WARNING! Although unit is equipped with a safety kill switch, NEVER reach into Blower Housing to remove clogs or for maintenance work without first removing the spark plug from engine. This will prevent false starting of engine and also allow Fan to move freely.

CAUTION: The engine contains NO OIL. Before starting the engine, make sure the crankcase is filled with the proper amount and type of oil. Refer to the engine operating manual for proper lubrication of the engine. Read the engine manual carefully before operating unit. Be sure to know how to start and stop the engine.

1. Care should be taken not to plug the hose by forcing too much debris into it at one time.
2. Stiff debris such as sticks and tree trimmings should not be picked up with the hose, as they may plug the hose.
3. If the hose becomes plugged, the engine must be shut off.
4. Remove hose from blower housing, remove all blockage from the hose and replace to blower housing.

NOTE: FAILURE TO OBSERVE SAFETY INSTRUCTIONS MAY RESULT IN SERIOUS INJURY. OBSERVE SAFETY RULES AT ALL TIMES. DON'T TAKE CHANCES!

OPERATION AND MAINTENANCE INSTRUCTIONS

READ SAFETY & OPERATING INSTRUCTIONS BEFORE OPERATING EQUIPMENT

5. Best vacuum is obtained when engine is run at full throttle.
6. Before using the machine to pick up debris, police the area to be cleaned first, picking up any large objects such as cans, toys, bones and chunks of wood. If these pass through the machine, they could damage the impeller or bend the engine crankshaft.
DANGER: Improper use of this equipment may result in serious injury.
7. For servicing and operating instructions for engine refer to Engine Manufacturers Service Manual. Careful attention to care of air cleaner and crankcase lubrication instructions will insure longer engine life. **KEEP ENGINE CLEAN.**
8. Clean the engine air cleaner every 10 hours of operation. (Do so more often under dusty conditions.) If it is punctured, torn, or uncleanable, it should be replaced.
9. Be sure to keep the oil at the proper level in the engine. Check the oil level each time you fill the fuel tank.

WARNING: When refueling, care should be taken not to spill fuel on hot engine. This could cause the fuel to ignite, resulting in serious injury to operator or damage to unit.



SAFETY PRECAUTIONS: The following is suggested to prevent damage to the equipment or injury to operator and people nearby.

1. Do not allow anyone to operate the Portable Loader without proper instructions.
2. Do not permit children to operate the Portable Loader.
3. Do not run the engine in an enclosed area. Exhaust gases contain carbon monoxide, an odorless and deadly poison.
4. Keep all nuts, bolts and screws tight to be sure the Portable Loader is in safe working condition.

WARRANTY INFORMATION

Parker Sweeper Company warrants each new piece of equipment manufactured under its name except the engine, to be free of defects in materials and workmanship under normal use and service. Parker Sweeper Company's obligation is limited to repair or replacement at its option for one (1) year (ninety (90) days for commercial service) from date of purchase.

If trouble should occur with the engine, please contact the manufacturer listed below, giving them all information: Name of unit purchased from company (Parker, Portable Loader, etc.), problem with engine, model no. of engine, etc.; when unit was purchased; and your complete return address with zip code. Failure to provide complete information will result in unnecessary delay of repair and return of unit.

Proper assembly of replacement parts is the responsibility of the owner or mechanic doing the work. Parker Sweeper Company warranty only applies to the original purchased unit and/or replacement parts if assembled correctly by a qualified mechanic. Under no circumstances does the warranty extend beyond the original time specified from date of purchase.

ENGINE:

Briggs & Stratton Company
P.O. Box 702
Milwaukee, Wisconsin 53201

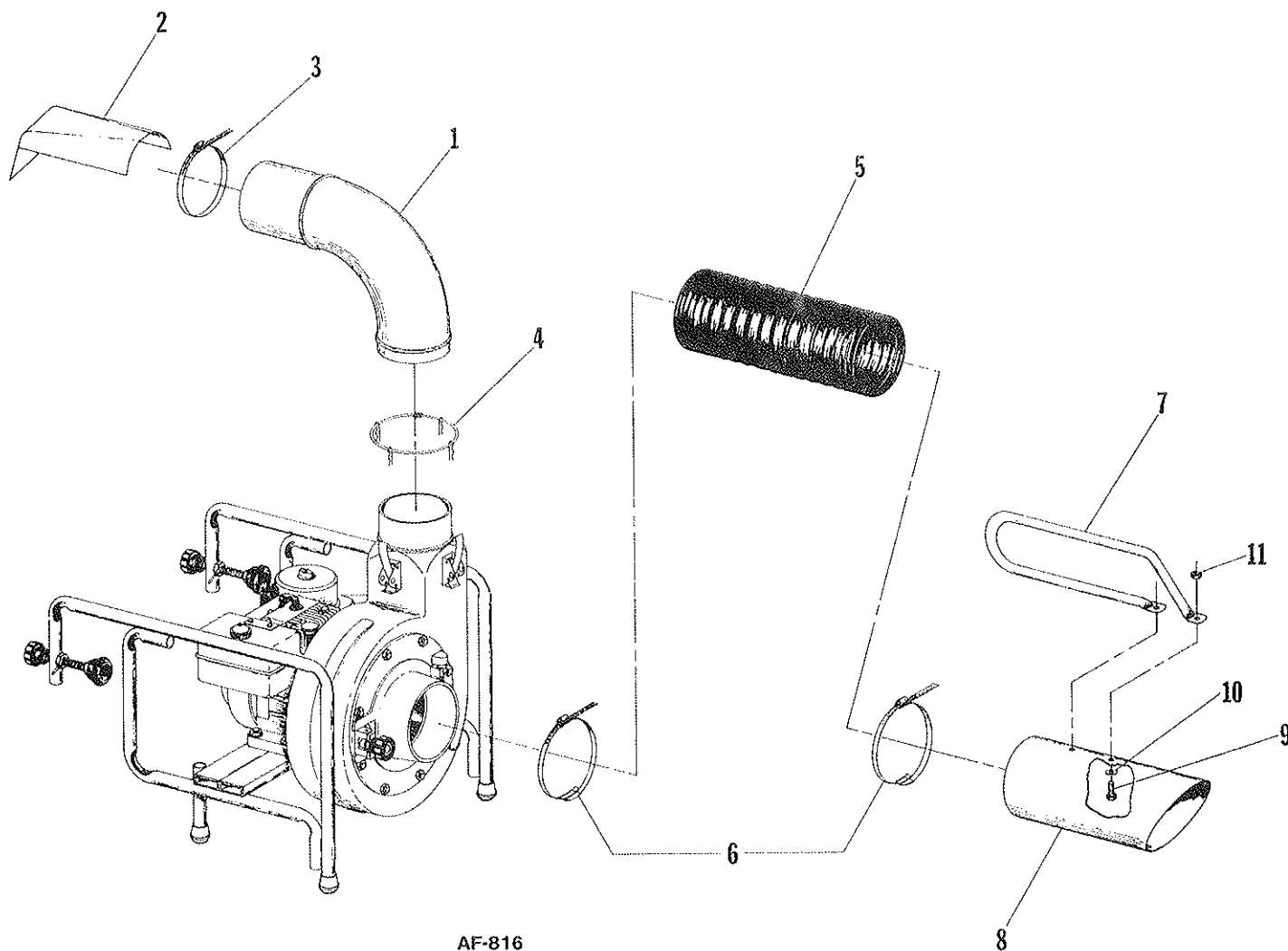
NOTE: Parker Sweeper Co. is continually striving to improve its products. We must, therefore, reserve the right to make improvements or changes, when it becomes practical and possible to do so, without incurring any obligation to make changes or additions to the equipment previously sold.

ALWAYS GIVE THE FOLLOWING INFORMATION WHEN ORDERING REPAIR PARTS:

- | | |
|-------------------------------|------------------------------|
| 1. PART NUMBER (Not Ref. No.) | 3. DESCRIPTION OF PART |
| 2. QUANTITY NEEDED | 4. FOR MODEL NO. PL-8808-1/C |

If unable to obtain parts locally, write down the above information and send to:
PARKER SWEEPER CO., P.O. BOX 1728, Springfield, Ohio 45501-1728

ELBOW & HOSE ASSEMBLY



PARTS LIST

Ref. No.	Part No.	Qty. Per Unit	Description
1	88-150-C	1	Elbow
2	86-138-D	1	Deflector Mod.
3	84-152-C	1	Clamp
4	88-147-C	1	Pin Assembly
5	87-131-B	1	Hose, 8" Dia. x 15' Lg.
6	84-389-C	2	Step Clamp
7	86-128-D	1	Handle
8	86-137-D	1	Intake Tube
9	65-416-10	2	Bolt, Hex Hd. 1/4-20 x 5/8
10	945-416	2	Flatwasher, Plain 1/4
11	365-416	2	Nut, Hex Lock 1/4-20

ENGINE MOUNT ASSEMBLY

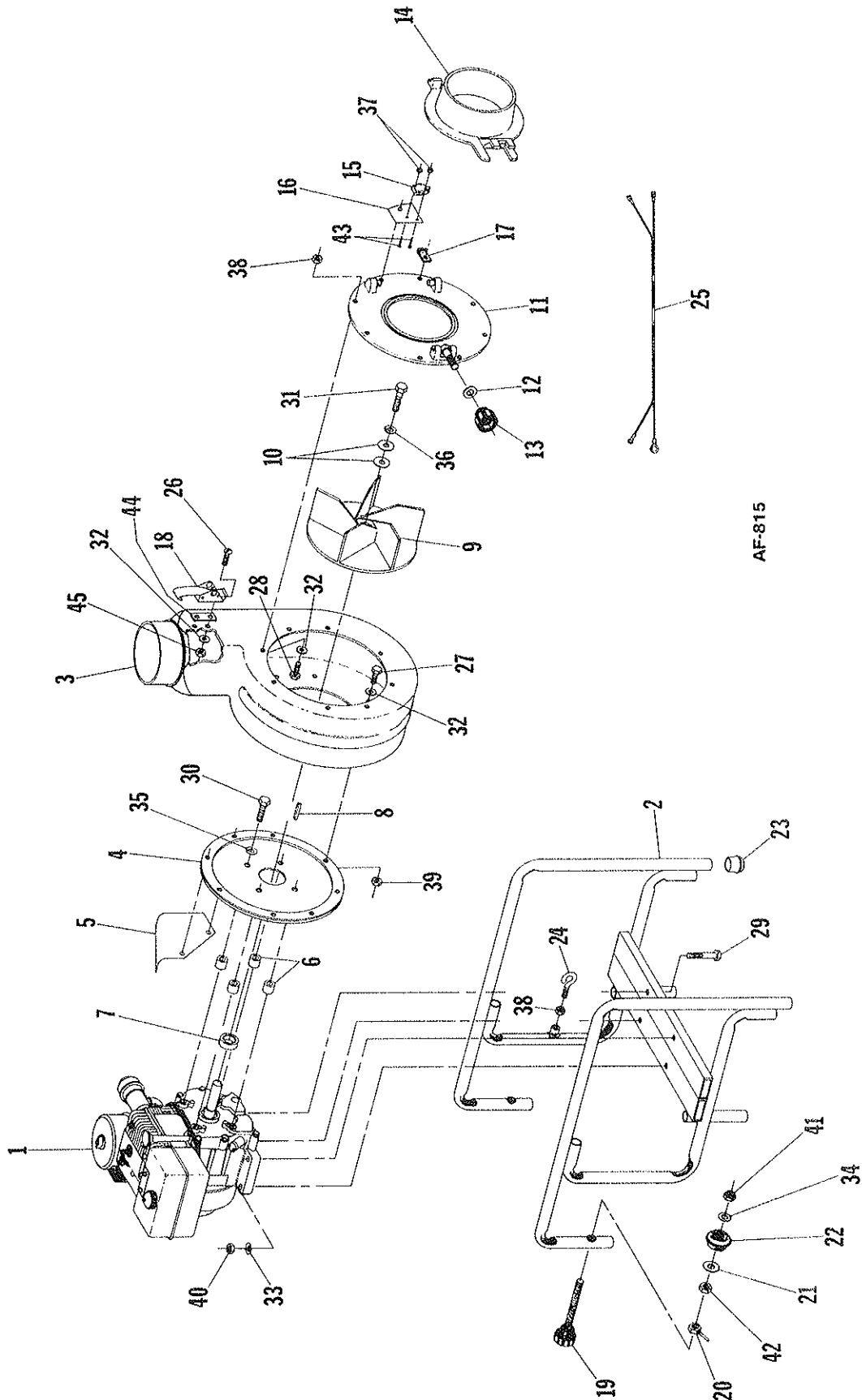
PARTS LIST

Ref. No.	Part No.	Qty. Per Unit	Description
1	*	1	Engine, 8 HP-B&S
2	88-126-D	1	Frame Weldment
3	SA-1558-C	1	Blower Housing & Liner Assy.
4	84-372-C	1	Back Cover & Gasket
5	88-129-C	1	Heat Shield
6	57-105-A	4	Spacer
7	73-415-A	1	Fan Spacer
8	74-112-A	1	Fan Key
9	72-175-D	1	Fan Wheel
10	82-138-B3	2	Special Washer
11	SA-1336-D	1	Front Cover Assy.
**12	945-816	1	Flatwasher, Plain 1/2
**13	80-29-A	1	Adjusting Knob
14	63-195-DU	1	Collar
15	88-146-B	1	Switch Modified
16	88-119-C	1	Kill Switch Plate
17	78-120-A	1	Cable Guide
18	84-245-A	4	Latch
19	88-117-B	2	Tailgate Clamp
20	88-114-A	2	Half Wing Nut Weldment
21	58-05-A	2	Special Washer
22	88-112-B	2	Ring
23	88-111-B	4	Leg Tip
24	84-80-A	1	Eye Bolt
25	SA-1557-B	1	Wire Assembly
26	515-416-12	8	Screw, Rd. Hd. Mach. 1/4-20 x 3/4
27	65-416-14	8	Bolt, Hex Hd. 1/4-20 x 7/8
28	65-416-16	8	Bolt, Hex Hd. 1/4-20 x 1
29	65-616-40	4	Bolt, Hex Hd. 3/8-16 x 2 1/2
30	60-616-28	4	Bolt, Hex Hd. 3/8-24 x 1 3/4
31	60-716-24	1	Bolt, Hex Hd. 7/16-20 x 1 1/2
32	945-416	24	Flatwasher, Plain 1/4
33	960-616	4	Flatwasher, Plain 3/8
34	945-816	2	Flatwasher, Plain 1/2
35	935-616	4	Lockwasher, Spring 3/8
36	935-716	1	Lockwasher, Spring 7/16
37	335-4	2	Nut, Plain Hex #4-40
38	335-416	1	Nut, Plain Hex 1/4-20
39	365-416	16	Nut, Hex Lock 1/4-20
40	365-616	4	Nut, Hex Lock 3/8-16
41	364-816	2	Nut, Hex Lock (Thin) 1/2-13
42	340-816	2	Nut, Hex Jam 1/2-13
43	505-4-12	2	Screw, Flat Hd. Mach. #4-40 x 3/4
44	88-172-A	4	Spacer
45	364-416	8	Nut, Hex Lock 1/4-20

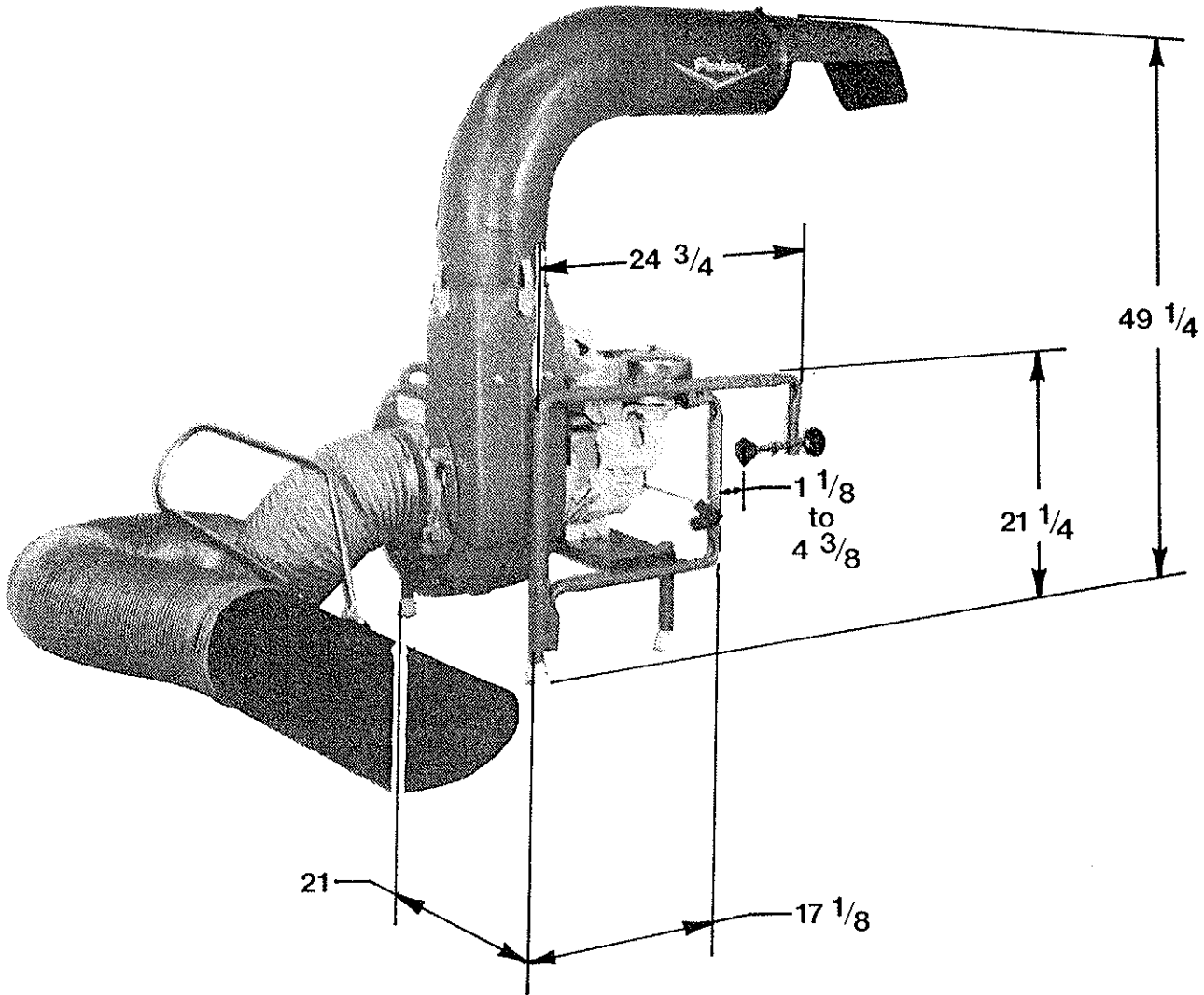
*Briggs & Stratton Model 195432 Spec. 4013-01

**Items 12 & 13 are supplied with item 11, Front Cover Assembly, but can be purchased separately.

ENGINE MOUNT ASSEMBLY



AF-815



PORTABLE LOADER
MODEL NO. PL-8808-I/C

