



Electronic Service Manuals

This electronic document is provided as a service to our customers. We do not create the contents of the information contained in this document. Should you have detailed questions pertaining to the information contained in this document, you may contact Michco, or the manufacturer which provided the original information in this electronic deliverable. Michco's only part in this electronic deliverable was the electronic assembly process. By providing this manual on line we are not guaranteeing parts availability.

You may contact Michco through the following methods:

Phone (517) 484-9312 or (800) 331-3339

2011 N. High St. -- Lansing, Michigan -- 48906

Fax: (517) 484-9836

Email: CustServe@Michco.com

Web site: www.Michco.Com

Parts Web site: www.FloorMachineParts.Com

Order Parts on Line at:

www.FloorMachineParts.Com

Directly to Parts & Service:

By Email: **Shop@Michco.com**

By Fax: (517) 702-2041

By Voice: Use numbers above.

Serving the Cleaning Industry Since 1922

Notice: All copyrighted material remains property of original owners, all trademarks are property of respective owners. Manuals are subject to Manufacturer's reproduction limitations. Originals or reproductions were provided by manufacturers through a request. We make no warranty as to the correctness of information provided in this document and you assume all risk. By placing these manuals on line we are not declaring our corporation to be an manufacturer authorized dealer or provider, please check our web site for authorized manufacturers we represent.

OWNER'S GUIDE



HURRICANE® MODEL HT-8680-K



AF-708

**READ THESE INSTRUCTIONS
BEFORE SETTING UP AND OPERATING MACHINE
BE SAFE. PROTECT YOUR FAMILY, YOUR FRIENDS, YOURSELF.
OBSERVE ALL SAFETY INSTRUCTIONS.**

PARKER SWEEPER COMPANY

Box 1728

Springfield, Ohio 45501-1728

Plate No. 1175 (Rev. 5-22-87)

87-58-A

TO THE OWNER

These instructions were written to assist you in the assembly and operation of your Hurricane. **READ THE INSTRUCTIONS** thoroughly **BEFORE** attempting to assemble and operate the machine so that you are familiar with the complete procedure and the safety precautions.

RULES FOR SAFE OPERATION



The following safety precautions are suggested to prevent damage to the equipment or injury to the operator or nearby persons.

1. TO PREVENT ACCIDENTAL STARTING ALWAYS REMOVE THE SPARK PLUG before working on the engine or equipment driven by the engine.
2. DO NOT RUN THE ENGINE IN AN ENCLOSED AREA. Exhaust gases contain carbon monoxide which is an odorless and deadly poison.
3. DO NOT FILL GASOLINE TANK WHILE ENGINE IS HOT OR RUNNING. Spilling gasoline on a hot engine may cause a fire or explosion.
4. DO NOT leave machine unattended while running.
5. DO NOT ALLOW machine to blow in direction of people or objects that could be injured by blown materials.
6. AVOID operating machine in dangerous places where steep slopes or loose debris will endanger the safety of operator or other people.

OPERATING INSTRUCTIONS

1. Before starting the engine, read the Operating and Maintenance instruction Manual. Add proper gasoline and oil to correct level.
2. Engine should be "broken in" by running at 1/2 throttle for 30 minutes and full throttle for an additional 30 minutes.
3. Machine will operate effectively by either pushing or pulling.
4. For moving heavy debris such as sticks, cleaning out flower beds, anything heavier than leaves, use the deflector in the down position.
5. For controlled blowing of leaves into windrows and stacking use the deflector in the up position.

IMPORTANT

ALWAYS GIVE THE FOLLOWING INFORMATION WHEN ORDERING REPAIR PARTS:

- | | |
|-------------------------------|---------------------------|
| 1. Part Number (Not Ref. No.) | 3. Description of Part |
| 2. Quantity Needed | 4. Model No. of Hurricane |

If unable to obtain parts locally, write down above information and send to:
PARKER SWEEPER CO., BOX 1728, SPRINGFIELD, OHIO 45501

Your unit is right hand (R.H.) or left hand (L.H.) as you stand behind it.

ASSEMBLY INSTRUCTIONS

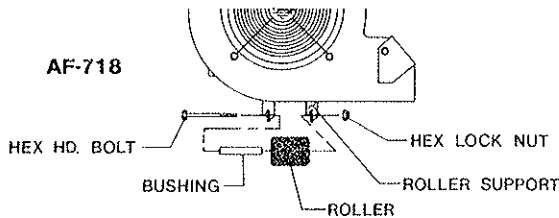
OBSERVE SAFETY RULES AT ALL TIMES. DON'T TAKE CHANCES!

UNPACKING UNIT

1. Remove all loose items from carton.
2. Use a hammer or nail puller to remove carton from wooden base.
3. Do not discard the carton or inserts until the unit is completely assembled.
4. Whenever the terms left or right hand, or "L" and "R", are used, it means from a position standing behind the unit facing forward. All hardware is on the unit in its proper location.

ASSEMBLING FRONT ROLLER

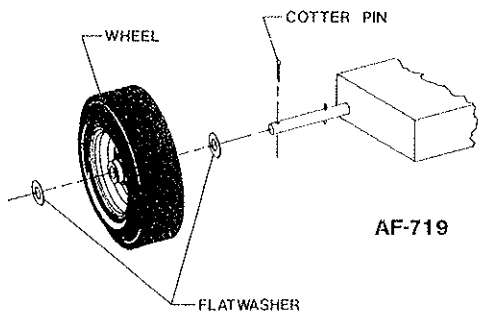
1. Remove the straps securing unit to wooden base, and front roller to axle.
2. Remove hex lock nut and hex hd. bolt from bushing and roller supports.
3. Insert bushing through hole in roller and place roller between roller supports. Insert bolt through supports and roller, secure with lock nut.



ASSEMBLING WHEELS

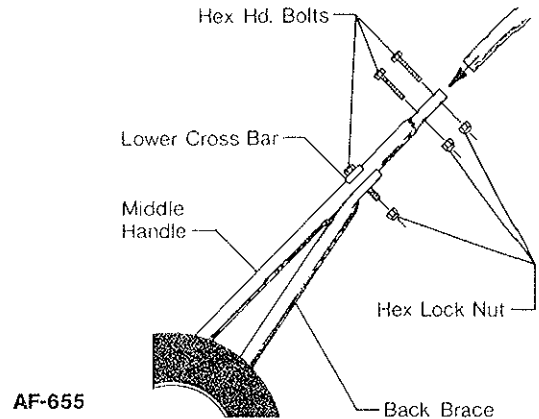
1. Remove the cotter pin from each end of axle. Also remove one flatwasher from each side.
2. Lift unit and assemble wheels to axles. Replace flatwashers and cotter pins.

NOTE: Wheels must be assembled with grease fitting in hub to the outside.



ASSEMBLING HANDLES

1. Remove hex lock nuts from the hex head bolts used to secure lower cross bar to the middle handles.
2. Align middle handles and back braces until bolts securing lower cross bar can be assembled through holes in upper portion of back braces.
3. Replace hex lock nuts to bolts and tighten.
4. Remove the four hex head bolts and hex lock nuts from the ends of the upper handle assembly.
5. Place the upper handle assembly down over the ends of middle handles.
6. Align holes in upper handle assembly with those in middle handles and replace hex head bolts and hex lock nuts removed in step 4.

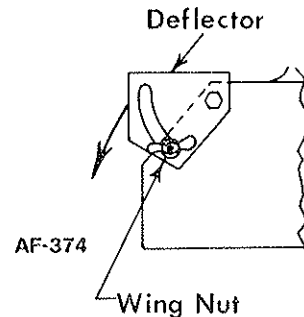


THROTTLE HOOKUP

1. To install the throttle control, remove it from the lower right hand handle.
2. Straighten the throttle cable out and run it up the left hand handle.
3. Attach the throttle control to the upper left hand handle with the two oval head screws and hex nuts furnished.
4. Make sure no sharp bends are in the line.

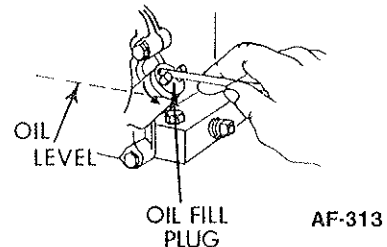
DEFLECTOR ADJUSTMENT

The air deflector is shipped in the down position and can be adjusted up or down per your requirements. To adjust the deflector loosen the wing nut and move the deflector up or down and then tighten wing nut.



IMPORTANT:

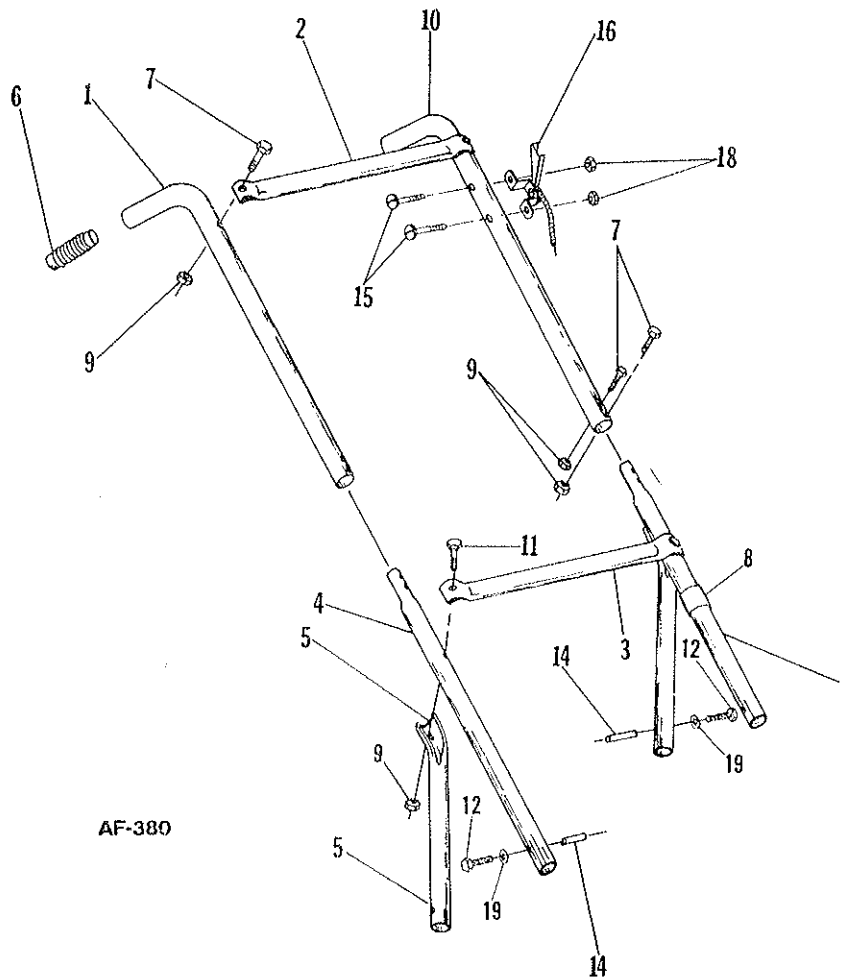
WARNING: the engine contains NO OIL. Read the Engine Instruction Manual carefully before operating the Unit. Be sure you know how to start and stop the engine before proceeding further. Do not start the engine until all assembly is finished.



NOTE: Parker Sweeper Co. is continually striving to improve its products. We must, therefore, reserve the right to make improvements or changes, when it becomes practical and possible to do so, without incurring any obligation to make changes or additions to the equipment previously sold.

**SAFETY IS IMPORTANT! DO NOT IGNORE IT!
OBSERVE IT! BE SAFE**

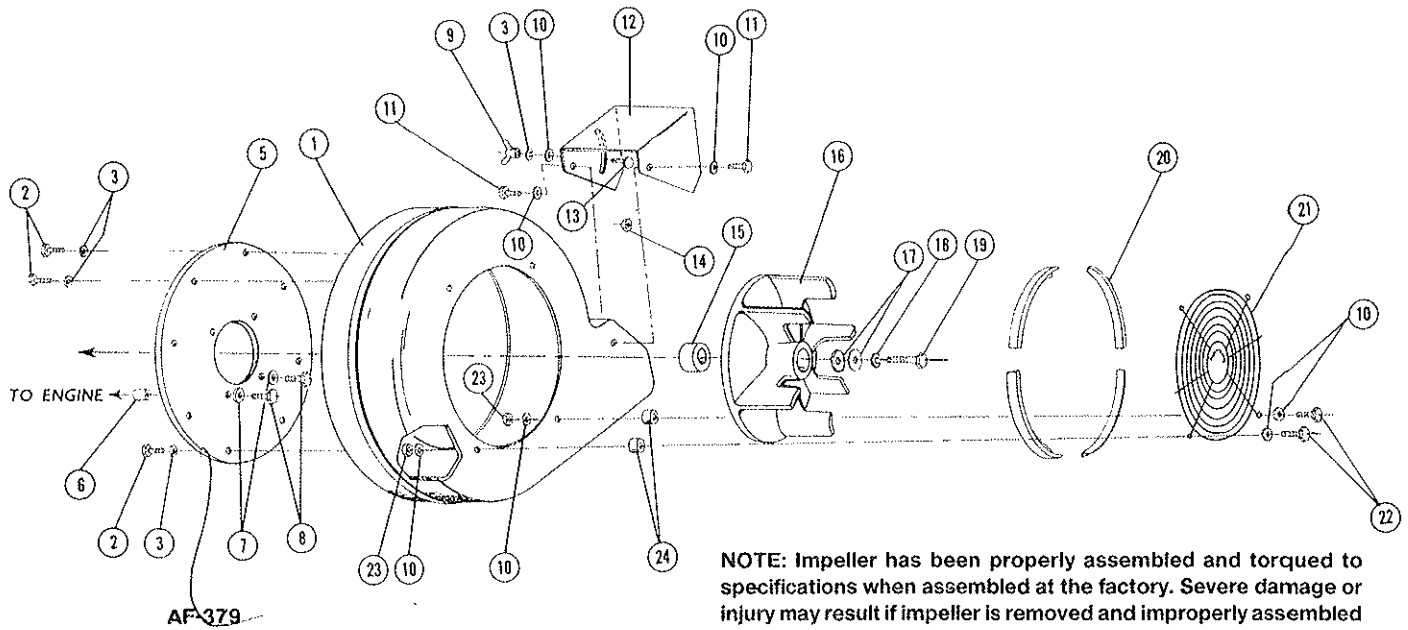
HANDLE ASSEMBLY



PARTS LIST

Ref. No.	Part No.	Qty. Per Unit	Description
1	80-321-C	1	Upper Handle
2	81-04-B	1	Crossbar Upper
3	81-47-B	1	Crossbar Lower
4	82-149-B	2	Middle Handle
5	82-155-C	2	Handle Brace
6	80-232-A	2	Handle Grip
7	65-416-24	6	Bolt, Hex Hd. 1/4-20 x 1 1/2
8	80-276-A	1	Clamp, Snap on Mounting
9	365-416	8	Nut, Hex Lock 1/4-20
10	83-18-C	1	Upper Handle
11	65-416-28	2	Bolt, Hex Hd. 1/4-20 x 1 3/4
12	65-516-24	4	Bolt Hex Hd. 5/16-18 x 1 1/2
14	80-238-A	4	Insert
15	515-10-20	2	Screw, Rd. Hd. 10-24 x 1 1/4
16	83-25-B-36	1	Throttle Control
18	365-10	2	Nut, Hex Lock 10-24
19	935-516	4	Lockwasher, Spring 5/16

BLOWER ASSEMBLY



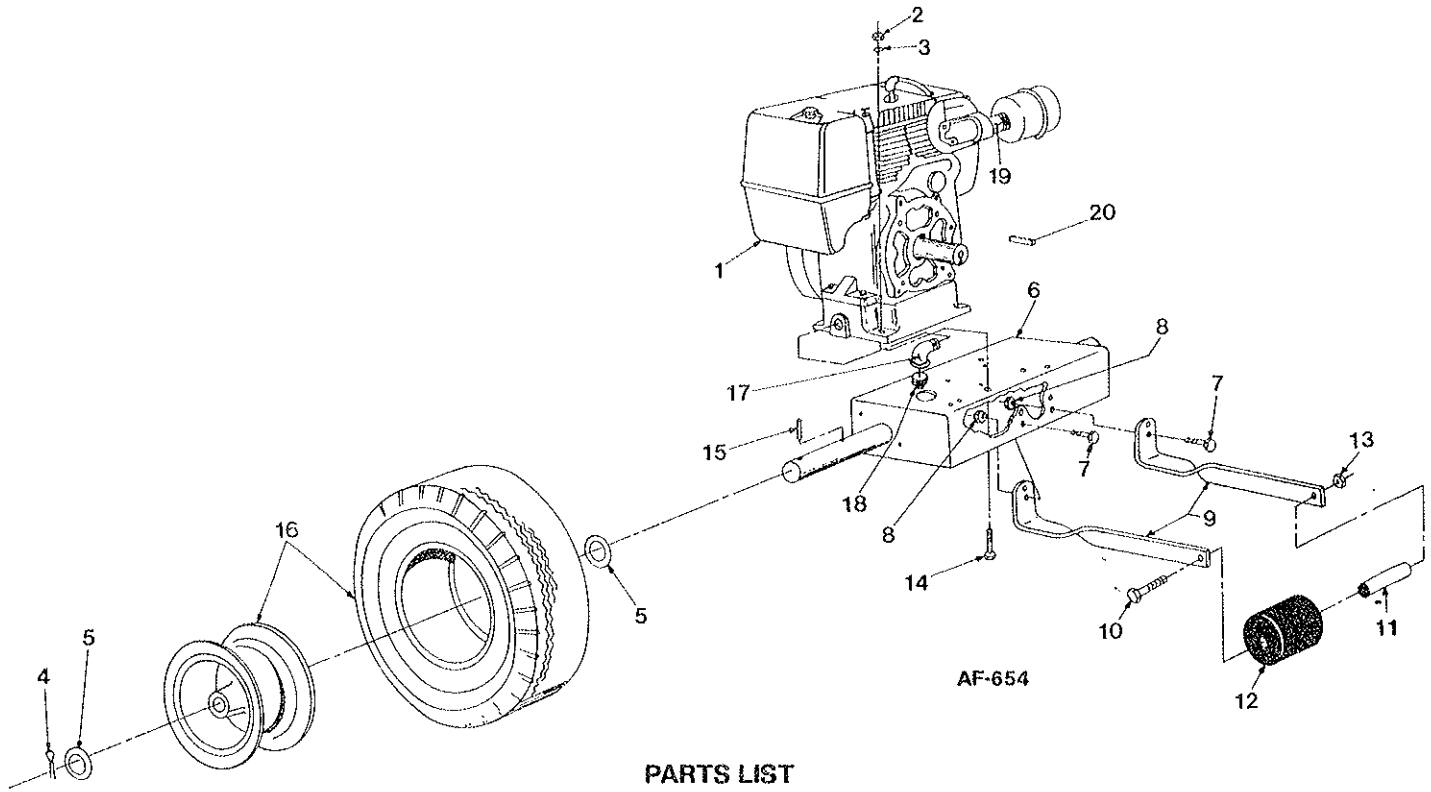
NOTE: Impeller has been properly assembled and torqued to specifications when assembled at the factory. Severe damage or injury may result if impeller is removed and improperly assembled with different hardware or torqued incorrectly. The bolt must be of grade 5 and the specified length. Torque a 7/16 bolt at 55 to 59 ft. lbs. Parker Sweeper is not liable for any changes by owner.

PARTS LIST

Ref. No.	Part No.	Qty. Per Unit	Description
1	82-117-D	1	Blower Housing
2	65-416-16	8	Bolt, Hex. Hd. 1/4-20 x 1
3	935-416	9	Lockwasher, Spring 1/4
5	83-52-C	1	Back Plate
6	82-108-A	4	Spacer
7	935-616	4	Lockwasher, Spring 3/8
8*	65-616-24	4	Bolt Hex Hd. 3/8-16 x 1 1/2
9	351-416-18	1	Wing Nut 1/4
10	945-416	11	Flatwasher, Plain 1/4
11	65-416-12	2	Bolt, Hex Hd. 1/4-20 x 3/4
12	82-130-C	1	Exhaust Deflector
13	70-416-12	1	Carriage Bolt, 1/4-20 x 3/4
14	365-416	2	Nut, Hex Lock 1/4-20
15	73-117-A	1	Fan Spacer
16	73-118-D	1	Fan Wheel
17	82-138-B3	2	Special Washer
18	935-716	1	Lockwasher, Spring 7/16
19	60-716-24	1	Bolt Hex Hd., 7/16-20 x 1 1/2
20	73-123-C	4	Anti-Wrap Segment
21	82-121-C	1	Grille
22	65-416-24	4	Bolt, Hex Hd. 1/4-20 x 1 1/2
23	364-416	4	Nut, Hex Lock 1/4-20
24	82-142-A	4	Spacer

*Torque at 10.5-12.5 Ft. Lbs.

ENGINE ASSEMBLY



PARTS LIST

Ref. No.	Part No.	Qty. Per Unit	Description
1	**	1	Engine
2	365-616	4	Nut, Hex Lock 3/8
3	945-616	4	Flatwasher, Plain 3/8
4	380-432-20	2	Cotter Pin 1/8 x 1 1/4
5	945-1216	4	Flatwasher, Plain 3/4
6	82-113-C	1	Chassis Weldment
7	65-416-12	4	Bolt, Hex Hd. 1/4-20 x 3/4
8	365-416	4	Nut, Hex Lock 1/4-20
9	82-147-B	2	Roller Support
10	60-816-88	1	Bolt, Hex Hd. 1/2-20 x 5 1/2
11	84-259-A	1	Bushing
12	66-436-A	1	Rubber Roller
13	363-816	1	Nut, Hex Lock 1/2-20
14	65-616-20	4	Bolt Hex Hd. 3/8-16 x 1 1/4
15	67-521-A	2	Roll Pin
16*	SA-231-B	2	Wheel Assembly
	68-447-B	2	Wheel Hub
	68-312-A	2	Tire
17	57-81-A	1	Street Elbow, 1/2 x 90°, Galvanized
18	—	1	Plug (Supplied with Engine)
19	—	1	Black Pipe Nipple 1 x 4 (Supplied with Engine)
20	63-130-A	1	Key

*Inflate to a Max. of 30 lbs.

**Kohler Model: M8T Spec. PA-301551.