



## Electronic Service Manuals

This electronic document is provided as a service to our customers. We do not create the contents of the information contained in this document. Should you have detailed questions pertaining to the information contained in this document, you may contact Michco, or the manufacturer which provided the original information in this electronic deliverable. Michco's only part in this electronic deliverable was the electronic assembly process. By providing this manual on line we are not guaranteeing parts availability.

You may contact Michco through the following methods:

Phone (517) 484-9312 or (800) 331-3339

2011 N. High St. -- Lansing, Michigan -- 48906

Fax: (517) 484-9836

Email: [CustServe@Michco.com](mailto:CustServe@Michco.com)

Web site: [www.Michco.Com](http://www.Michco.Com)

Parts Web site: [www.FloorMachineParts.Com](http://www.FloorMachineParts.Com)

Order Parts on Line at:

**[www.FloorMachineParts.Com](http://www.FloorMachineParts.Com)**

Directly to Parts & Service:

By Email: **[Shop@Michco.com](mailto:Shop@Michco.com)**

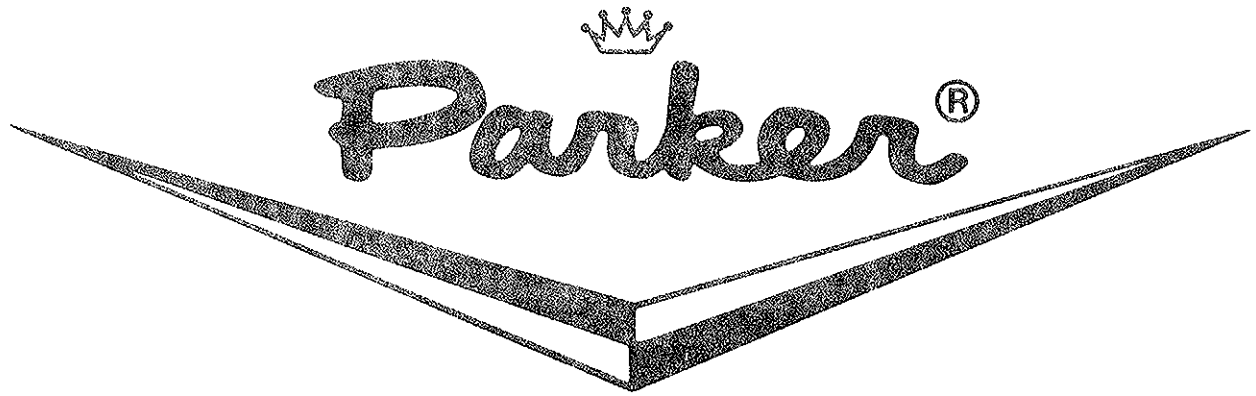
By Fax: (517) 702-2041

By Voice: Use numbers above.

**Serving the Cleaning Industry Since 1922**

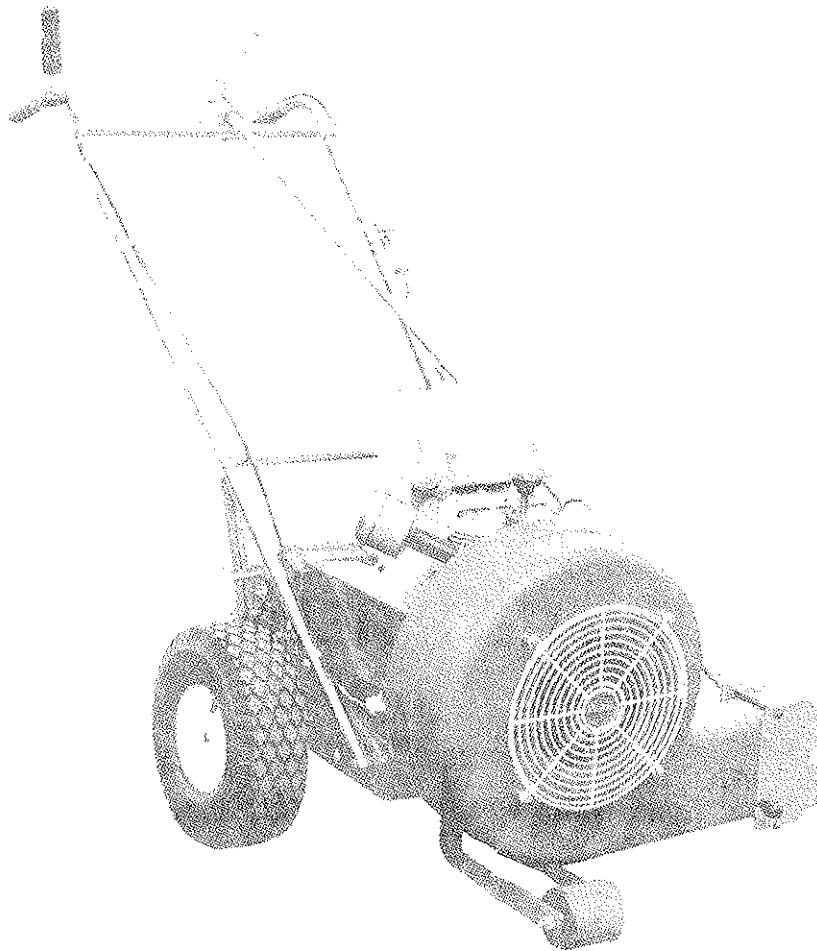
Notice: All copyrighted material remains property of original owners, all trademarks are property of respective owners. Manuals are subject to Manufacturer's reproduction limitations. Originals or reproductions were provided by manufacturers through a request. We make no warranty as to the correctness of information provided in this document and you assume all risk. By placing these manuals on line we are not declaring our corporation to be an manufacturer authorized dealer or provider, please check our web site for authorized manufacturers we represent.

# OWNER'S GUIDE



## SELF-PROPELLED HURRICANE<sup>®</sup>

MODEL NO. HC-9180-K-SP



AF-483

**SAFETY COMES FIRST; READ THIS OWNER'S GUIDE THOROUGHLY, UNDERSTAND ALL INSTRUCTIONS BEFORE SETTING UP AND OPERATING THIS EQUIPMENT.**

**PARKER SWEEPER COMPANY**

**Box 1728**

**Springfield, Ohio 45501-1728**

Plate No. 1546

91-03-A

## TO THE OWNER

These instructions were written to assist you in the assembly and operation of your Hurricane. **READ THE INSTRUCTIONS** thoroughly **BEFORE** attempting to assemble and operate the machine so that you are familiar with the complete procedure and the safety precautions.

### RULES FOR SAFE OPERATION

The following safety precautions are suggested to prevent damage to the equipment or injury to the operator or nearby persons.

1. **TO PREVENT ACCIDENTAL STARTING ALWAYS REMOVE SPARK PLUG** before working on the engine or equipment driven by the engine.
2. **DO NOT RUN THE ENGINE IN AN ENCLOSED AES.** Exhaust gases contain carbon monoxide which is an odorless and deadly poison.
3. **DO NOT FILL GAS TANK WHILE ENGINE IS HOT OR RUNNING.** Spilling gasoline on a hot engine may cause a fire or explosion.
4. **DO NOT** leave machine unattached while running.
5. **DO NOT ALLOW** machine to blow in direction of people or objects that could be injured by blown materials.
6. **AVOID** operating machine in dangerous places where slopes or loose debris will endanger the safety of operator or other people.

### LUBRICATION

The only lubrication necessary is a couple drops of light oil on the throttle control lever and throttle wire where it enters the cable, also on the moving parts on the exhaust deflector. Lubricate the wheel bearings and wheel axle once a week if used daily.

### OPERATING INSTRUCTIONS

1. Before starting the engine, read the Operating and Maintenance Instruction Manual. Add proper gasoline and oil to correct level.
2. Engine should be "broken in" by running at ½ throttle for 30 minutes and full throttle for an additional 30 minutes.
3. Machine will operate effectively by either pushing or pulling.
4. Your Hurricane Blower can be used as either a Low Blow or Hi Blow depending on the application.
5. For moving heavy debris such as sticks, cleaning out flower beds, anything heavier than leaves, use the Low Blow.
6. For controlled blowing of leaves into windows and stacking use the Hi Blow.

**ALWAYS GIVE THE FOLLOWING INFORMATION WHEN  
ORDERING REPAIR PARTS:**

- |                               |                           |
|-------------------------------|---------------------------|
| 1. Part Number (Not Ref. No.) | 3. Description of Part    |
| 2. Quantity Needed            | 4. Model No. of Hurricane |

If unable to obtain parts locally, write down above information and send to:  
**PARKER SWEEPER CO., BOX 1728, SPRINGFIELD, OHIO 45501**

Your unit is right hand (R.H.) or left hand (L.H.) as you stand behind it.

# ASSEMBLY INSTRUCTIONS

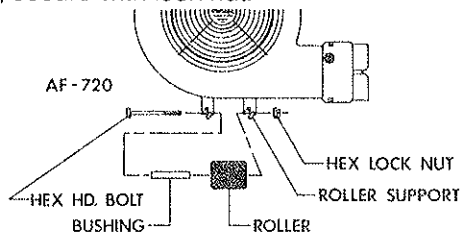
**YOUR SAFETY IS OUR CONCERN. READ ALL SAFETY RULES AND OPERATING INSTRUCTIONS BEFORE ATTEMPTING TO OPERATE THIS EQUIPMENT. FAILURE TO FOLLOW SAFETY RULES AND OPERATING INSTRUCTIONS MAY RESULT IN SERIOUS INJURY.**

## UNPACKING UNIT

1. Remove all loose items from carton.
2. Do not discard the carton or inserts until the unit is completely assembled.
3. Whenever the terms left or right hand, or "L" or "R", are used, it means from a position standing behind the unit facing forward. All hardware is on the unit in its proper location.

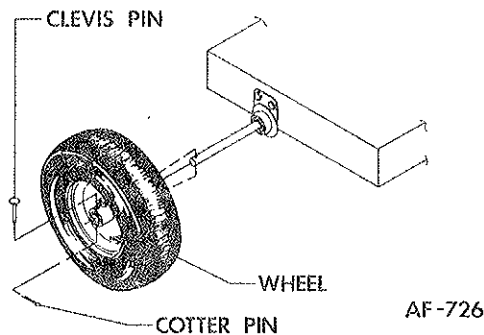
## ASSEMBLING FRONT ROLLER

1. Remove front roller from end of lower control rod.
2. Remove hex lock nut and hex hd. bolt from bushing and roller supports.
3. Insert bushing through hole in roller and place roller between roller supports. Insert bolt through supports and roller, secure with lock nut.



## ASSEMBLING WHEELS

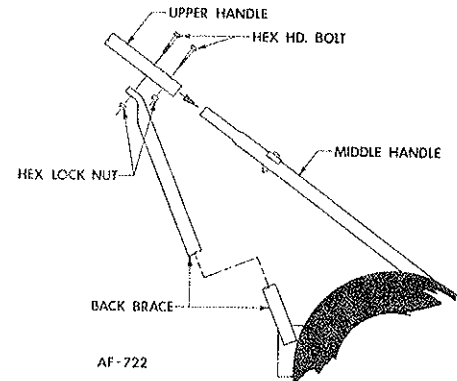
1. Remove the cotter pin and clevis pin from ends of differential axles.
  2. Lift one side of unit at a time and assemble wheels to axles.
- NOTE: Wheels must be assembled with hole in hub shaft to outside.
3. Reassemble clevis pins through holes in hubs and axles, secure with cotter pins.



## ASSEMBLING HANDLES

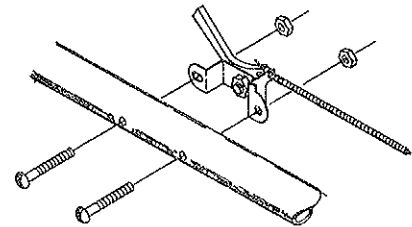
1. Remove the hex lock nuts and hex hd. bolts from lower holes in upper handle assembly.
2. Place upper handle assembly down over ends of middle handles.
3. Align holes in upper handle assembly with those in middle handles, replace hex hd. bolts, only, through holes.
4. Assemble one nut to the bolt in the lower hole on each side, Tighten nut. securing upper cross brace (8) to handles.
5. Left handle assembly until back braces can be assembled to the bolts in upper holes and assemble hex lock nuts, Tighten nuts.

NOTE: Nuts should be tightened enough that at least two of the Bolt threads extend through the Nut. It may be necessary to collapse the tubing SLIGHTLY to accomplish this.



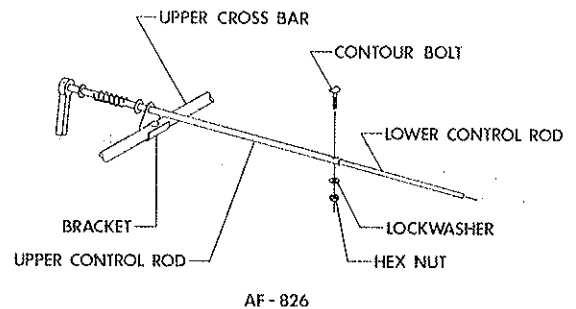
## THROTTLE HOOKUP

1. Remove Throttle Control from its shipping position and run it up left hand handles.
2. Align the holes in control with those in upperleft handle and secure with Oval Hd. Screw and Lock Nuts furnished.
3. Secure control cable to lower left handle with Snap-on Clamp.
4. Be sure there are no bends less than 8" in radius.



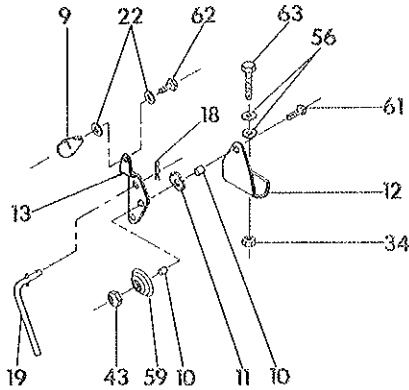
## CONTROL ROD CONNECTION

1. Remove the contour hd. bolt, lockwasher and hex. nut from the upper control rod.
2. Telescope the lower and upper control rods together.
3. Replace the contour hd. bolt, lock washer and hex nut thru the control rods.



**SAFETY IS IMPORTANT!  
DO NOT IGNORE IT — OBSERVE IT!  
BE SAFE!**

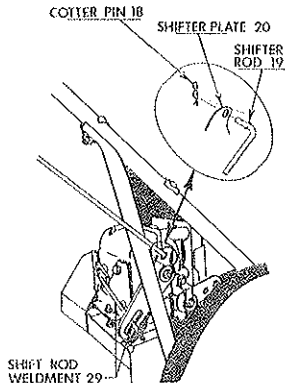
# ASSEMBLY INSTRUCTIONS



AF-398

## SHIFT LEVER CONNECTION

1. Remove cotter pin (18) from upper end of shifter rod (19).
2. Place end of rod thru upper hole in shift lever (13). Small pin in rod will act as a stop.
3. Replace cotter pin (18). Shifter rod (19) should pivot freely in shift lever (13).
4. Secure lower end of shifter rod (19) to shifter plate (20) as outlined above.



AF-725

5. Pulling shift lever fully to the rear is reverse gear. Moving lever progressively from reverse is neutral, 1st, 2nd, 3rd, 4th and 5th gears. Securing bracket (12) is slotted on bottom for adjustment if necessary.

**NOTE:** Unit will roll freely forward and backwards with the transmission in neutral.

## CLUTCH ASSEMBLY AND ADJUSTMENT

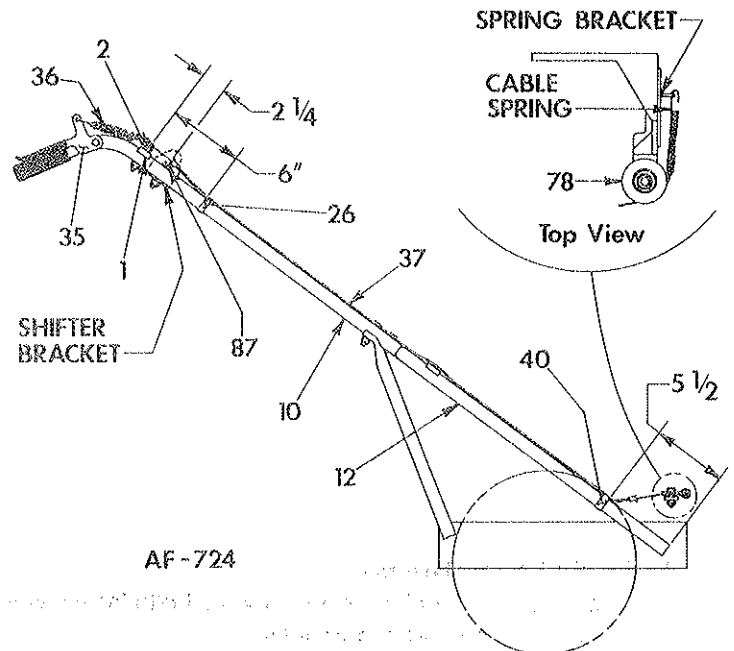
1. Remove the snap clamp (26) securing the clutch cable (37) to the left middle handle (12).
2. Run the clutch cable (37) up the right hand upper handle (10) and assemble open loop of spring (37) through hole in tab of clutch grip (35).
3. Check to make sure the lower end of clutch cable is seated in the nylon pulley (78).

**NOTE:** Proper assembly of the clutch cable is important as it determines the adjustment of the clutch. Follow these instructions carefully to adjust clutch.

4. Loosen the fasteners on wire clamp (40) securing clutch cable (37) to the right middle handle (12).
5. Slide the black outer sheath of clutch cable (37) up or down so that the metal collar on top of sheath is  $2\frac{1}{4}$  inches down from the center of the hex hd. bolt (2) securing upper cross brace (1) to handles.
6. Measure down 6 inches from that same bolt and assemble snap clamp (26), removed in step 1, to upper handle and clutch cable.
7. Measure up from the bottom of the middle handle (12) to the lowest edge of the wire clamp (40). This should be  $5\frac{1}{2}$  inches.

**NOTE:** If adjustment is needed wire clamp (40) should be loosened enough to allow free movement over cable and handle without pulling or stretching black sheath.

8. Once clamp is properly set, hold in place and tighten fasteners.
9. This should be the correct setting and no further adjustment needed. To check, depress clutch grip (35), engaging clutch, the cable spring should be, almost or just touching nylon pulley (78).
10. If after inspection or operation the clutch would need adjustment, loosen the fasteners on the wire clamp (40). Moving the clamp upward on handle and cable will loosen the tension of clutch. Moving the clamp down will tighten clutch.



AF-724

**NOTE: FAILURE TO OBSERVE SAFETY INSTRUCTIONS MAY RESULT IN SERIOUS INJURY.**

# OPERATING INSTRUCTIONS

## TO START UNIT

**WARNING:** The engine contains no oil when shipped. Read the Engine Instruction Manual and add the proper type and amount of oil and gas before starting engine.

Transmission **MUST** be in **NEUTRAL** to start.

Read engine manual carefully. Be sure to know how to start and stop engine operating unit.

## TRANSMISSION OPERATION

**NOTE:** Transmission has five forward speeds.

1. Transmission used on this equipment is a tractor type (not automotive). The operator does not have to start in first gear and shift on up to gear required, he can go directly into the gear needed. It is also important to understand that the gears are designed to go into mesh (into gear) only when not turning. De-clutching (releasing clutch handle) is required at all times when gear selection occurs. Never shift on hills or inclined surfaces.

2. The operator should not shift with the unit under heavy load. In no case should an operator shift from first to neutral, from reverse to neutral, or from neutral to first or reverse, without de-clutching.

## CLUTCH OPERATION

1. The unit is equipped with a "Dead Man" clutch. When the transmission is put in gear, and the clutch is depressed and held in the down position the unit will move. The unit will stop moving when the clutch is released.

## ADJUSTING BLOWER HOUSING "HI or LOW"

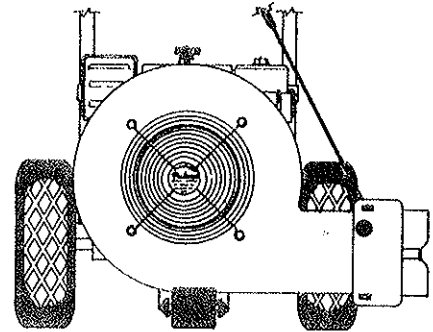
**CAUTION:** When adjusting Blower Housing, engine must be shut off and spark plug wire disconnected.

1. Loosen Adjusting Knob, do not remove, that holds Clamp against Pivot Ring of Blower Housing.
2. Pivot Blower Housing to desired position and tighten Adjusting Knob.

**NOTE:** It is not necessary to detach the Deflector Control Rod Assembly.

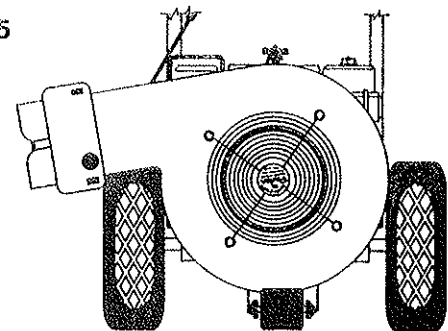
3. It is possible to control the air flow from the operating position. Turn Exhaust Control Lever to change deflection angle of Exhaust Deflector.

AF-824

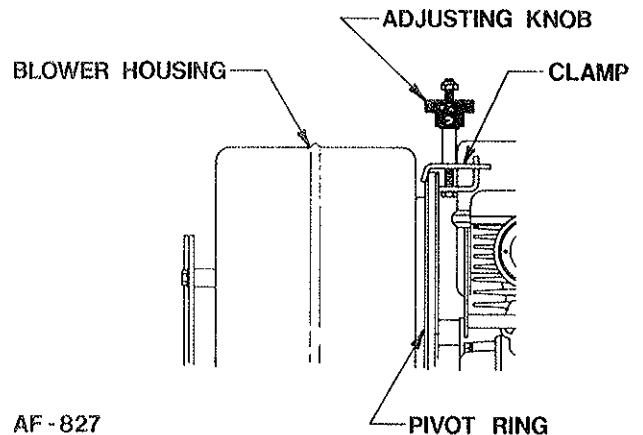


Blower Housing in the Low Blow position.

AF-825



Blower Housing in the Hi Blow position.



AF-827

## OPERATING NOTES

1. The unit is designed to operate at full throttle, and will work effectively by either pushing or pulling.
2. To clean an area, start at the outer perimeter and blow the material toward the center.
3. When cleaning large areas or if debris is very dense, it may be best to split the area into smaller plots and blow the material into several small piles rather than one large one. As the area being cleaned becomes smaller, reduce the engine speed to prevent blowing the collected debris into the area already cleaned.
4. The Blower Housing can be adjusted to the "Hi" or "Low" blowing position depending on the job being performed.
5. Place the Blower Housing in the "Low Blow" position with the Exhaust Deflector straight out from side of unit for blowing dry leaves and other light debris.
6. For blowing heavier debris such as wet leaves, twigs and small sticks, place Blower Housing in "Low Blow" position with Exhaust Deflector aimed downward.
7. Place the Blower Housing in the "Hi Blow" position for stacking leaves in piles or wind rows. The Exhaust Deflector should be adjusted to achieve desired effect.

**OBSERVE SAFETY RULES AT ALL TIMES. DON'T TAKE CHANCES!**

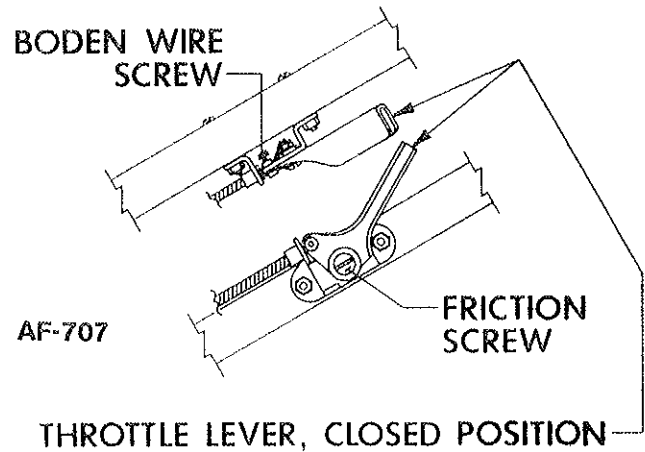
# OPERATING INSTRUCTIONS

## THROTTLE OPERATION AND ADJUSTMENT

1. The Throttle Control on Handle is a remote for the Throttle Control on Engine. Pull the throttle lever back, toward operator, to open Throttle for starting or speed control.
2. To stop unit, move Throttle Lever to the closed position.
3. While operating, if Throttle Lever does not stay open due to vibration of unit, tighten Friction Screw until there is sufficient friction to hold Throttle open.

## BELT ADJUSTMENT

Belt adjustments is automatically controlled by the Extension Spring on the end of the Clutch Cable. With this system, Belt tension is always correct, reducing Belt wear and Belt stretch.

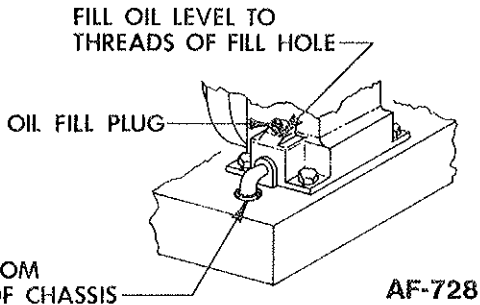


# MAINTENANCE INSTRUCTIONS

**CAUTION:** Before starting to work on the Engine or the equipment driven by the Engine, always remove the spark plug to prevent accidental starting.

Refer to Engine Manufacturer's Service Manual. Careful attention to care of air cleaner and crankcase lubrication instructions will insure longer engine life.

KEEP ENGINE CLEAN.



**WARNING:** When refueling care should be taken not to spill fuel on hot engine. This could cause the fuel to ignite, resulting in serious injury to operator or damage to the unit.

## BELT REPLACEMENT

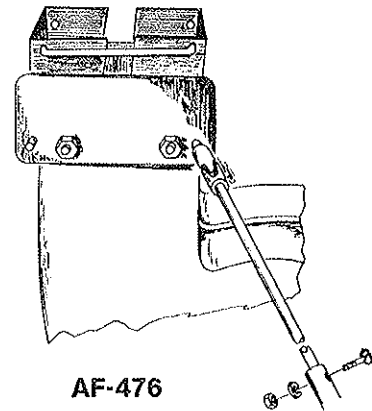
1. Remove the Spark Plug to insure that Engine cannot be started accidentally.
2. Remove the following items to reach Belt:
  1. Universal Joint (37) from Exhaust Deflector (36).
  2. Loosen Knob (5), Do Not Remove.
  3. Roller Guides (15).
  4. Complete Blower Housing (40), including items (21, 22, 25 & 27 thru 47), also spacer (2 & 3).
  5. Hex Hd. Bolt (26).
  6. Spring Lockwasher (24).
  7. Special Washers (23).
  8. Fan Wheel (20).

## INSTRUCTIONS FOR REMOVING OR INSTALLING THE BLOWER HOUSING

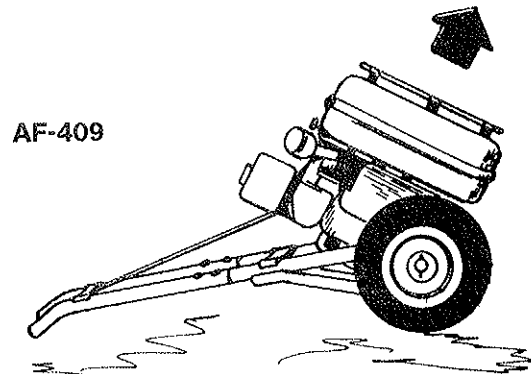
### To Remove the Blower Housing:

1. Push the handle of the Hurricane down until the handle is resting on the ground.

2. Remove the contour head bolt, hex. nut and lock washer, holding the upper and lower control rods, for the deflector, together.



3. To loosen the top of the blower housing, remove the lock nut, knob, washer, spacer and clamp.
4. To loosen the bottom of the blower housing, remove the nuts on each side.
5. Remove the lock washers and pull out the roller guides bringing the bolts, washers and spacers with them.
6. Remove the blower housing by lifting it off the fan.

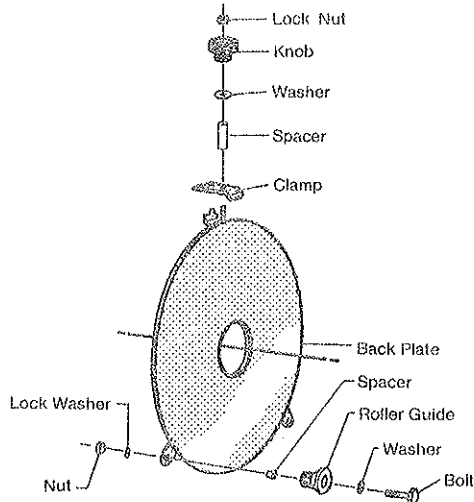


**BE SAFE. PROTECT YOUR FAMILY, YOUR FRIENDS, YOURSELF.  
OBSERVE ALL SAFETY INSTRUCTIONS.**

# MAINTENANCE INSTRUCTIONS (Continued)

## To Install the Blower Housing:

1. Place the blower housing over the fan and position the pivot ring against the back plate.
2. Re-insert the bolts with the roller guides, washers and spacers, in the order shown below.
3. Add the washer, nut, and tighten.
4. At the top of the housing, replace the clamp, spacer, washer, knob and lock nut.

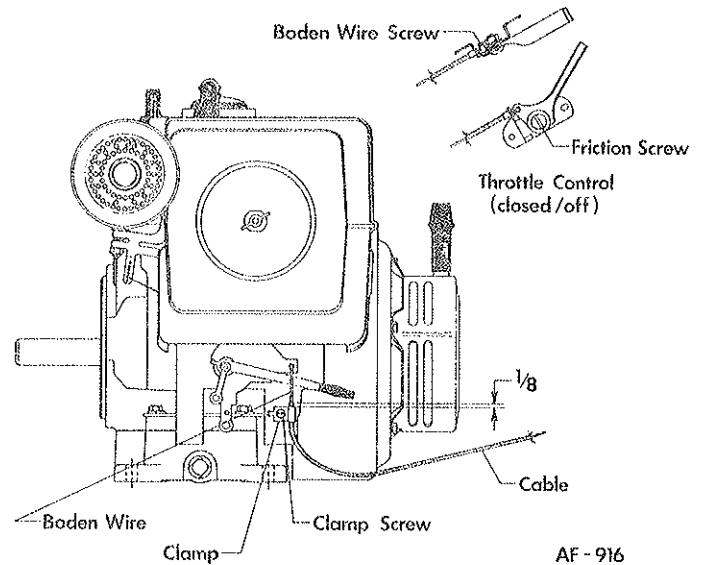


**CAUTION:** Pull the recoil starter cord to rotate the fan, to make sure the fan rotates freely. Replace the ignition wire on the spark plug.

## THROTTLE CONTROL CONNECTION

If it becomes necessary to remove or adjust Throttle Control Cable from Engine, follow set of instructions below.

1. Place Boden Wire thru Clamp and attach to Throttle Plate as shown in illustration AF-916
2. Extend 1/8" of Cable beyond Throttle Lever Clamp and tighten Clamp Screw.



3. Loosen Boden Wire Screw and place Throttle Control in closed position.
4. Place Throttle Control of Engine to the off position and tighten Boden Wire Screw.

**NOTE:** If Throttle does not stay open due to vibration of unit, tighten Friction Screw on Throttle Control until there is sufficient friction to hold Throttle open.

## LUBRICATION

1. Grease fittings are located in the hubs of the rear wheels. Fresh grease should be added periodically to assure proper lubrication of Wheels.
2. Add a few drops of oil to the Throttle Control Cable and Wire to keep it operating smoothly.

**NOTE:** Check all items once a week if unit is used daily.

**NOTE:** Refer to engine operating instruction for proper lubrication of the engine.

## WARRANTY INFORMATION

Parker Sweeper Company warrants each new piece of equipment manufactured under its name except engines, transmissions and differentials where applicable to be free from defects in materials and workmanship under normal use and service. Parker Sweeper Company's obligation is limited to repair or replacement, at its option for one (1) year (Ninety (90) days of commercial service) from date of purchase.

If trouble should occur with the engine, please contact the manufacturer, giving them all information: Name of unit, purchased from company, (HC-9180-K-SP, Parker Sweeper Co., etc.); problem with engine, model number of engine, etc.; when unit was purchased; and a complete return address with zip code. Failure to provide complete information will result in unnecessary delay of repair and return of unit. The following is a list of companies that supply Parker Sweeper Co. with various products. Please contact the companies directly at the address listed if any problems should occur.

All parts listed are under the manufacturer's name and part number. Replacement parts should be purchased directly from the company listed with the complete description of the part and part number.

Proper assembly of replacement parts is the responsibility of the owner or machanic doing the work. Parker Sweeper Company warranty only applies to the original purchased unit. Under no circumstance does the warranty extend beyond the original time specified from date of purchase.

## ENGINES

Kohler Co.  
Kohler, Wisconsin 27249

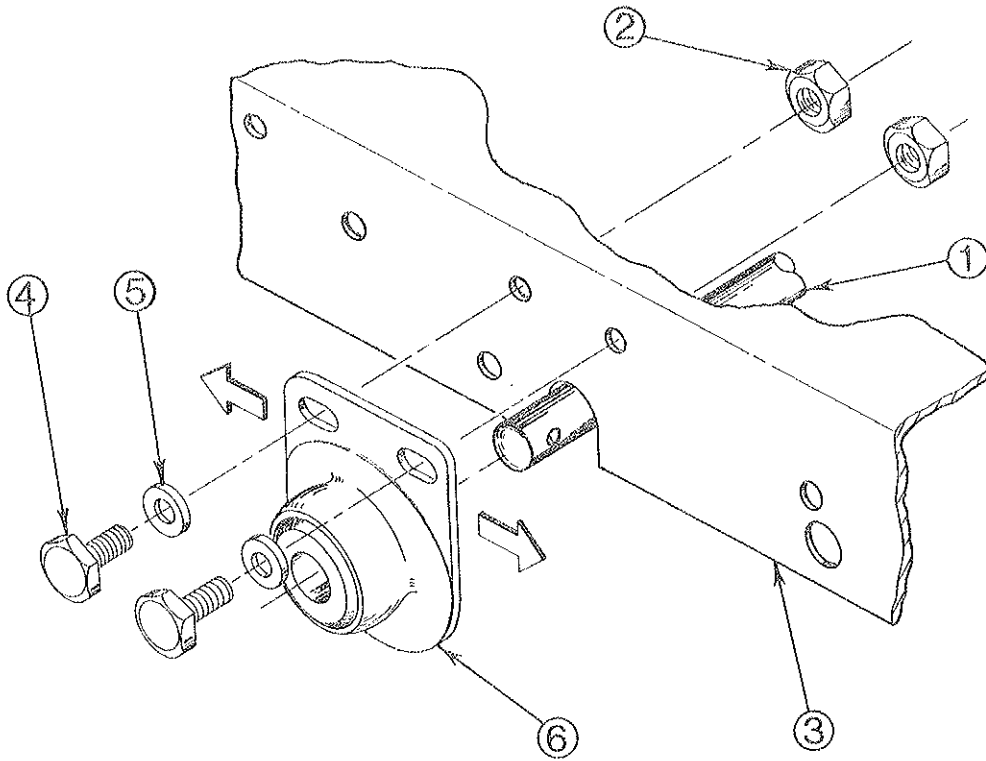
## TRANSMISSION & DIFFERENTIAL

Engine & Transmission Group  
900 North St.  
Grafton, Wisconsin 53024

## CHAIN ADJUSTMENT, DIFFERENTIAL

To adjust chain, set chassis upon 2" x 4" or equivalent. At the ends of the axle remove cotter pin, and clevis pin. Pull wheels off the axle. The axle bearings are now accessible for adjustment. With 9/16 wrench loosen the nuts holding the bearings on both sides of the machine.

To tighten chain, push axle forward. Make sure that the bearings are moved forward the same amount on both sides. The same amount of the slot should be visible on the bearings on both sides. Tighten the nuts with a wrench. Slide the wheels onto the axles and reinsert the clevis and cotter pin. If chain needs to be loosened repeat same procedure only pulling axle back just slightly.



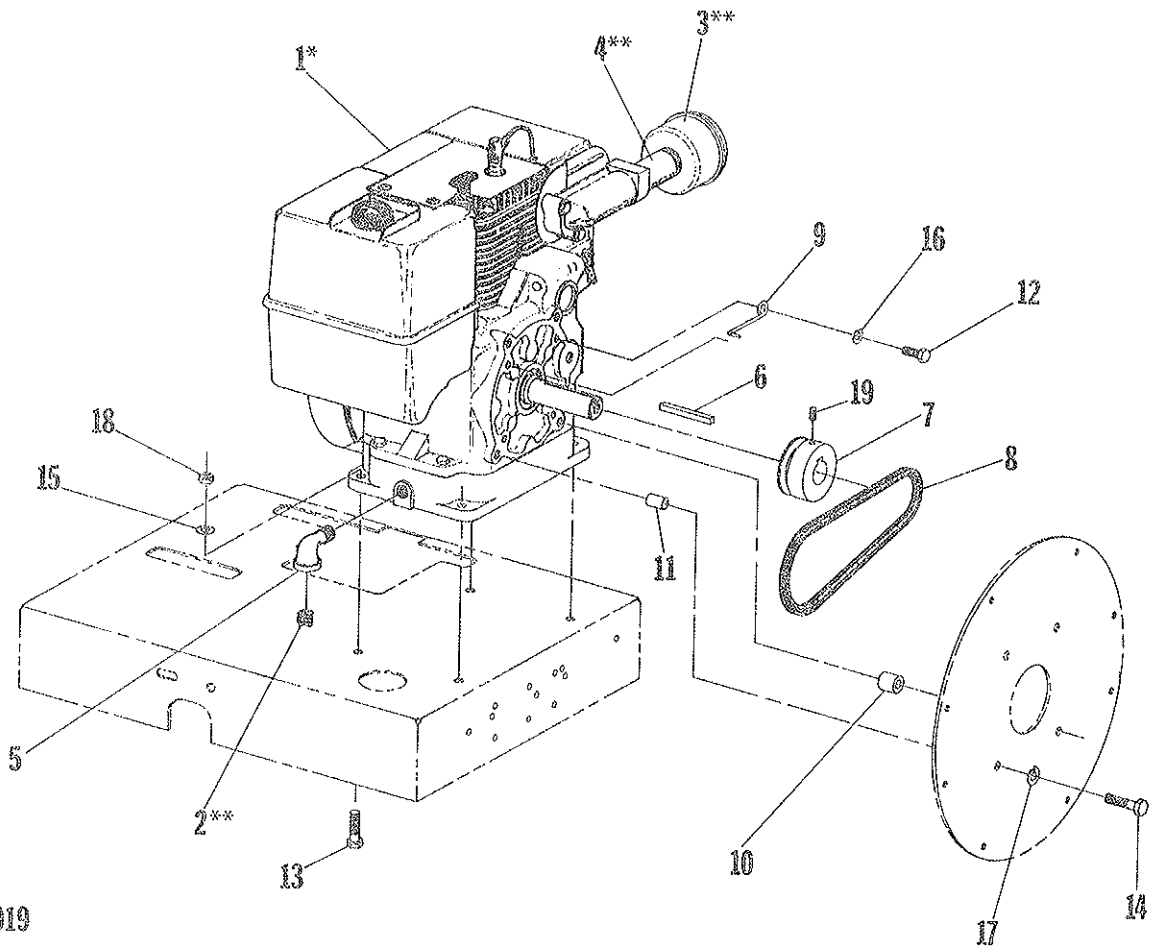
AF-479

### PARTS LIST

Ref. No.	Description
1	Differential Assy.
2	Nut, 3/8-16 Hex. Lock
3	Chassis
4	Bolt Hex. Hd., 3/8-18 x 1
5	Washer, Flat Special 3/8
6	Bearing Assembly Modification

# ENGINE ASSEMBLY

## PARTS LIST



AF-919

Ref. No.	Part No.	Description	Qty. Per Unit	Ref. No.	Part No.	Description	Qty. Per Unit
1	*	Engine, Kohler 8 H.P.	1	13		Bolt, Hex Hd. 3/8-16 x 1 1/4	4
2	**	Plug, Oil Drain	1	14		Bolt, Hex Hd. 3/8-16 x 1 1/2	4
3	**	Muffler	1	15		Flatwasher, Plain 3/8	4
4	**	Pipe Nipple 1x4	1	16		Lockwasher, Spring 5/16	2
5	57-81-A	Street Elbow 1/2-90°	1	17		Lockwasher, Spring 3/8	4
6	74-112-A	Fan Key 1/4 x 2 1/2	1	18		Nut, Hex Lock 3/8-16	4
7	81-61-A	Engine, Pulley	1	19		Screw, Allen Hd. Set 1/4-20 x 1/2	1
8	90-118-A	V-Belt (Gates #1260)	1				
9	81-33-A	Belt Popper	2				
10	79-139-A	Spacer	3				
11	90-122-A	Spacer	1				
12		Bolt, Hex Hd. 5/16-18 x 3/4	2				

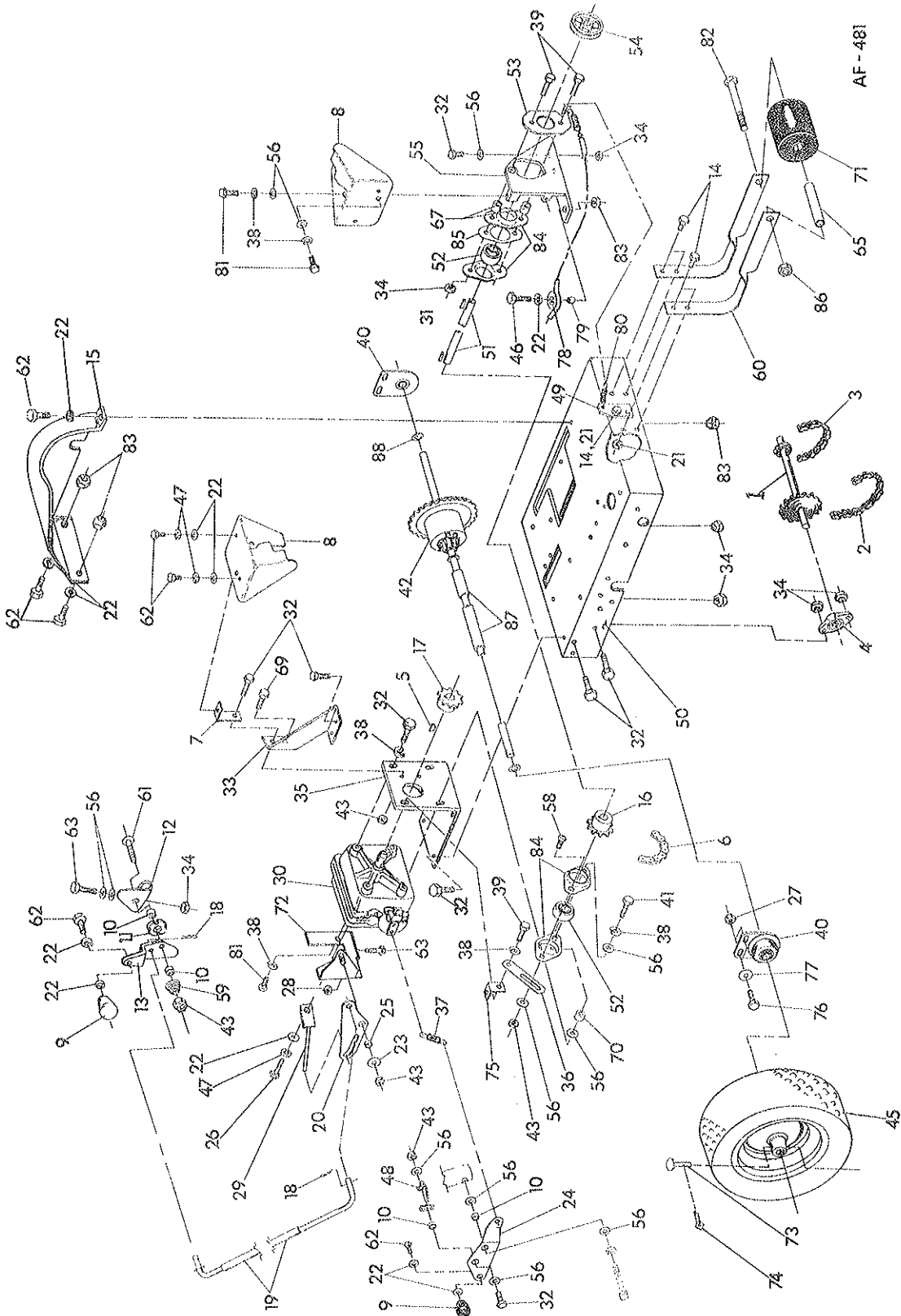
Items listed below should be purchased through a local Hardware, Lumber or Auto supply store. Grade 5 is recommended.

\* Kohler Model No. M 8T, Spec. 301551

\*\* Supplied with engine, Muffler spec. 230410, Nipple spec. 48 136 01

# CHASSIS & DRIVE ASSEMBLY

## PARTS LIST



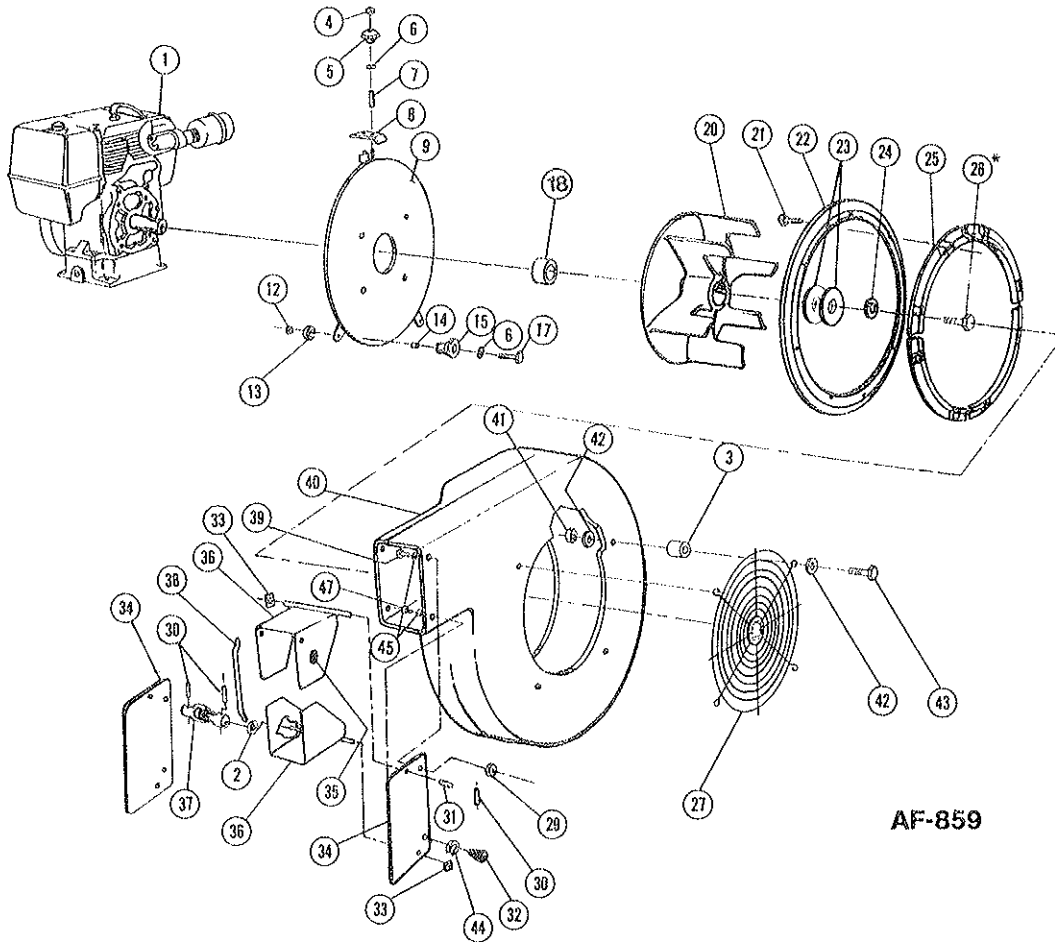
## CHASSIS &amp; DRIVE ASSEMBLY

## PARTS LIST

Ref. No.	Part No.	Description	Qty. Per Unit	Ref. No.	Part No.	Description	Qty. Per Unit
1	81-25-B	Jack Shaft	1	78	81-44-A	Nylon Pulley	1
2	84-41-B32	Chain, Roller #41-32-P	1	79	81-45-A	Spacer	1
3	84-41-B48.5	Chain Roller #41-48.5-P	1	80	90-120-A	Spring	1
4	74-116-A	Bearing Assy. Side Flange	2	84	66-139-A	Flange Bearing	4
5	280-09	Woodruff Key #9	1	85	81-40-A	Bearing Spacer	1
6	84-41-B20.5	Chain, Roller #41-20.5-P	1	87	88-56-B	Spacer Tube	1
7	88-42-A	Bracket Weldment	1	88	88-49-A	Washer	3
8	90-69-C	Chain & Belt Guard	2	Items listed below should be purchased at a local hardware store, and must be of grade 5 quality.			
9	75-79-A	Knob	2	14	65-416-12	Bolt, Hex Hd. 1/4-20 x 3/4	6
10	54-227-A	Spacer	4	21	365-416	Nut, Hex Lock 1/4-20	6
11	68-28-A	Cupped Washer	1	22	945-416	Flatwasher, Plain 1/4	11
12	80-285-A	Bracket	1	26	60-416-10	Bolt, Hex Hd. 1/4-24 x 5/8	1
13	70-67-B	Lever Clutch Control	1	27	365-616	Nut, Hex Lock 3/8-16	4
15	82-195-D	Chain Guard Weldment	1	28	335-516	Nut, Plain Hex 5/16-18	1
16	90-73-A	Sprocket	1	32	65-516-12	Bolt, Hex Hd. 5/16-18 x 3/4	16
17	90-74-A	Sprocket	1	34	365-516	Nut, Hex Lock 5/16-18	16
18	57-110-A	Cotter Pin	2	38	935-516	Lockwasher, Spring 5/16	9
19	SA-1139-B	Shifter Rod (Includes items 18)	1	39	65-516-16	Bolt Hex Hd. 5/16-18 x 1	3
20	83-29-A	Shifter Plate	1	41	65-516-20	Bolt, Hex Hd. 5/16-18 x 1 1/4	1
23	76-36-A	Washer, Special	1	43	364-516	Nut, Hex Lock (Thin) 5/16-18	5
24	90-119-B	Brake Lever	1	46	65-416-16	Bolt, Hex Hd. 1/4-20 x 1	1
25	83-35-A	Spacer	1	47	935-416	Lockwasher, Spring 1/4	3
29	82-134-B	Shift Rod Weldment	1	56	945-516	Flatwasher, Plain 5/16	13
*30	SA-857-A	Transmission	1	57	335-616	Nut, Plain Hex 3/8-16	1
31	48-277-A	Key, 3/16 Square	2	58	70-516-12	Bolt, Carriage 5/16-18 x 3/4	1
33	82-20-C	Transmission Bracket Brace	1	61	515-516-12	Screw, Rd. Hd. Mach 5/16-18 x 3/8	1
35	82-15-D	Transmission Bracket	1	62	65-416-8	Bolt, Hex Hd. 1/4-20 x 1/2	7
36	90-75-A	Jackshaft Bracket	1	63	65-516-24	Bolt, Hex Hd. 5/16-18 x 1 1/2	2
37	80-193-A	Spring	1	64	364-616	Nut, Hex Lock (Thin) 3/8-16	1
40	SA-817-B	Bearing Assy.	2	69	65-516-10	Bolt, Hex Hd. 5/16-18 x 5/8	1
42	SA-1243-D	Differential Assy.	1	74	380-332-8	Cotter Pin	2
44	74-168-A	Wheel Spacer	2	76	65-616-16	Bolt, Hex Hd. 3/8-16 x 1	4
45	68-310-B	Wheel Assembly	2	81	72-516-12	Bolt, Self Tapping 5/16-18 x 3/4	5
	68-311-B	• Wheel	2	82	60-816-88	Bolt, Hex Hd. 1/2-20 x 5 1/2	1
	68-312-A	• Tire 5.30/4.50 x 6	2	83	364-416	Nut, Hex Lock (Thin) 1/4-20	4
48	63-304-A	Bag Hook	1	86	363-816	Nut, Hex Lock 1/2 - 20	1
49	82-159-A	Spring Support Bracket	1				
50	81-19-D	Chassis Weldment	1				
51	90-66-B	Drive Shaft	1				
52	66-138-A	Seal Master Bearing	2				
53	81-43-A	Spring Bracket	1				
54	74-86-A	Drive Sheave	1				
55	90-44-D	Clutch Bracket	1				
59	80-162-A	Shifter Spring	1				
60	82-147-B	Roller Support	2				
65	84-259-A	Bushing	1				
66	66-431-A	Washer, Special	4				
67	81-42-A	Spacer	2				
70	59-29-A	Spacer	1				
71	66-436-A	Roller	1				
72	82-141-B	Adjusting Plate	1				
73	80-44-A	Clevis Pin	2				
75	80-32-A	Bracket & Nut	1				
77	81-166-A	Washer, Special	4				

\* (See Transmission Page)

# BLOWER ASSEMBLY



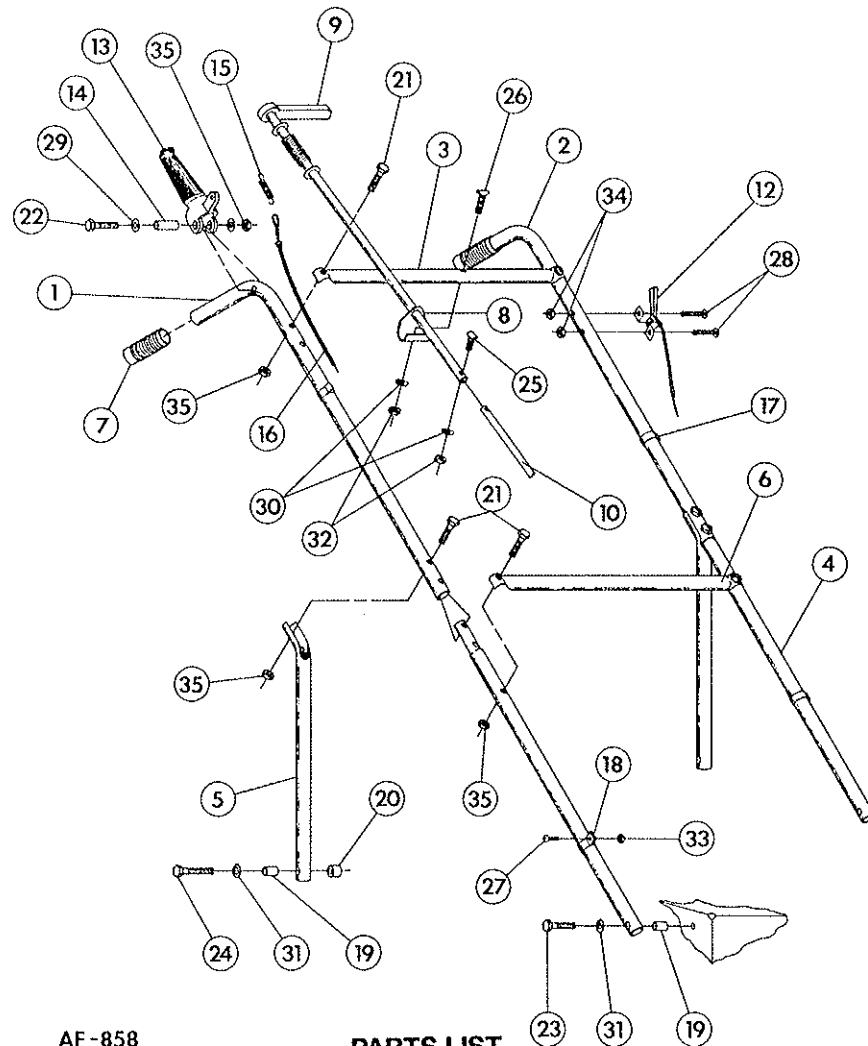
AF-859

## PARTS LIST

Ref. No.	Part No.	Qty. Per Unit	Description	Ref. No.	Part No.	Qty. Per Unit	Description
1		1	Engine (on assy. page)	25	73-123-C	4	Anti-Wrap
2	81-120-A	1	Spacer	26*	60-716-24	1	Bolt, Hex Hd. 7/16-20 x 1 1/2
3	82-142-A	4	Spacer, Grille	27	82-121-C	1	Grill Assembly
4	365-516	1	Nut, Hex. Lock, 5/16-18	29	365-416	3	Nut, Hex. Lock, 1/4-20
5	79-94-A	1	Knob	30	60-62-A	3	Roll Pin, 1/8 Dia. x 3/4
6	945-516	3	Washer, 5/16	31	73-372-A	1	Spring
7	79-67-A	1	Spacer	32	75-79-A	1	Knob
8	79-51-A	1	Clamp	33	75-80-A	2	Shaft, Retainer
9	80-316-C	1	Back Plate Weldment	34	73-124-B	2	Exhaust, Side Plate
12	335-516	2	Nut, Hex., 5/16-18	35	73-406-A	1	Friction Disc
13	935-516	2	Washer, Lock, 5/16	36	73-125-B	2	Exhaust Deft. Weld.
14	80-101-A	2	Bushing	37	82-251-A	1	Universal Joint
15	80-144-A	2	Guide, Roller	38	73-126-A	1	Link, Exhaust Def.
17	65-516-20	2	Bolt, Hex. Hd., 5/16-18x1 1/4	39	65-416-12	3	Bolt, Hex. Hd., 1/4-20x3/4
18	88-153-A	1	Spacer	40	82-118-D	1	Blower Housing
20	73-118-D	1	Fan Wheel	41	364-416	4	Nut, Hex. Lock (Thin) 1/4-20
21	505-416-24	8	Screw, Flat Hd., 1/4-20x1 1/2	42	945-416	8	Flatwasher, Plain 1/4
22	79-129-C	1	Pivot Ring	43	65-416-24	4	Bolt, Hex. Hd., 1/4-20x1 1/2
23	82-138-B3	2	Special Washer	44	935-416	1	Lockwasher, Spring, 1/4
24	935-716	1	Lockwasher, Spring, 7/16	45	945-416	4	Washer, Plain, 1/4
				47	65-416-10	1	Bolt, Hex. Hd., 1/4-20x5/8

\*7/16 Bolt Torque to 45 to 49 ft. lbs.

# HANDLE ASSEMBLY



AF-858

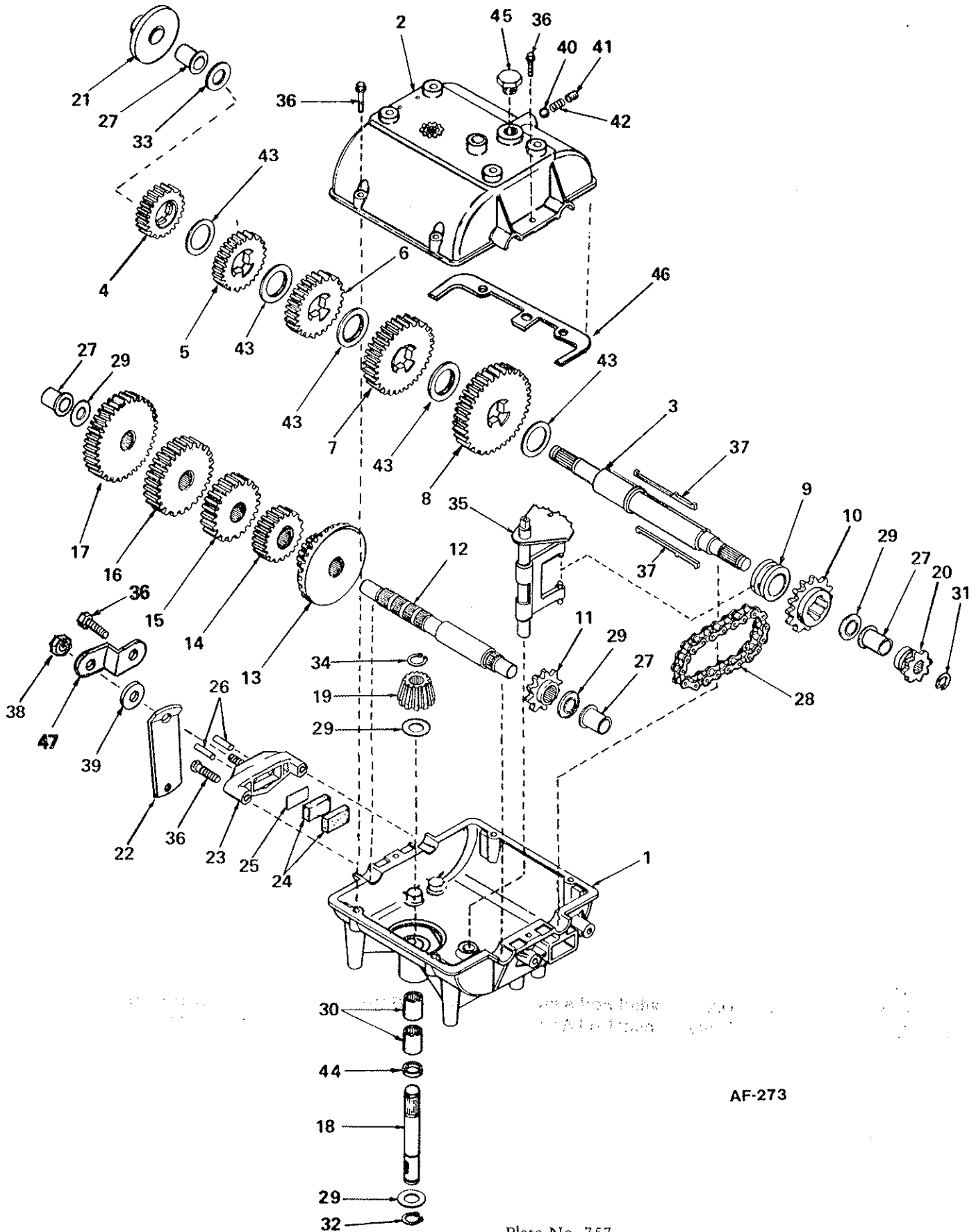
## PARTS LIST

Ref. No.	Part No.	Qty. Per Unit	Description	Ref. No.	Part No.	Qty. Per Unit	Description
1	81-23-C	1	Upper Handle	The following items should be purchased through a local hardware store, and MUST be of grade 5 quality.			
2	83-18-C	1	Upper Handle	21	65-416-24	8	Bolt, Hex Hd. 1/4-20 x 1 1/2
3	82-249-B	1	Upper Cross Bar	22	65-416-28	1	Bolt, Hex Hd. 1/4-20 x 1 3/4
4	82-167-B	2	Middle Handle	23	65-516-28	2	Bolt, Hex Hd. 5/16-18 x 1 3/4
5	85-23-C	2	Handle Back Brace	24	65-516-40	2	Bolt, Hex Hd. 5/16-18 x 2 1/2
6	81-58-B	1	Lower Cross Bar	25	69-416-16	1	Bolt, Contour Hd. 1/4-20 x 1
7	80-232-A	2	Handle Grip	26	69-416-24	1	Bolt, Contour Hd. 1/4-20 x 1 1/2
8	82-252-A	1	Bracket	27	515-8-8	1	Screw, Rd. Hd. Mach. 8-32 x 1/2
9	SA-909-B	1	Upper Control Rod Assy.	28	515-10-24	2	Screw, Rd. Hd. Mach. 10-24 x 1 1/2
10	SA-1582-A	1	Lower Control Rod Assy.	29	945-416	2	Flatwasher, Plain 1/4
12	83-25-B44	1	Throttle Control	30	935-416	2	Lockwasher, Spring 1/4
13	SA-1176-A	1	Clutch Grip Assy.	31	935-516	4	Lockwasher, Spring 5/16
14	80-225-A	1	Spacer	32	335-416	2	Nut, Plain Hex 1/4-20
15	74-167-A	1	Spring	33	365-8	1	Nut, Hex Lock 8-32
16	<del>91-01-A</del> 86-37-A	1	Clutch Cable	34	365-10	2	Nut, Hex Lock, 10-24
17	80-276-A	3	Snap-On Clamp	35	365-416	9	Nut, Hex Lock 1/4-20
18	81-88-A	1	Clamp				
19	80-238-A	4	Insert				
20	79-139-A	2	Spacer				

# PEERLESS TRANSMISSION

## MODEL 750-A

Five Speed



AF-273

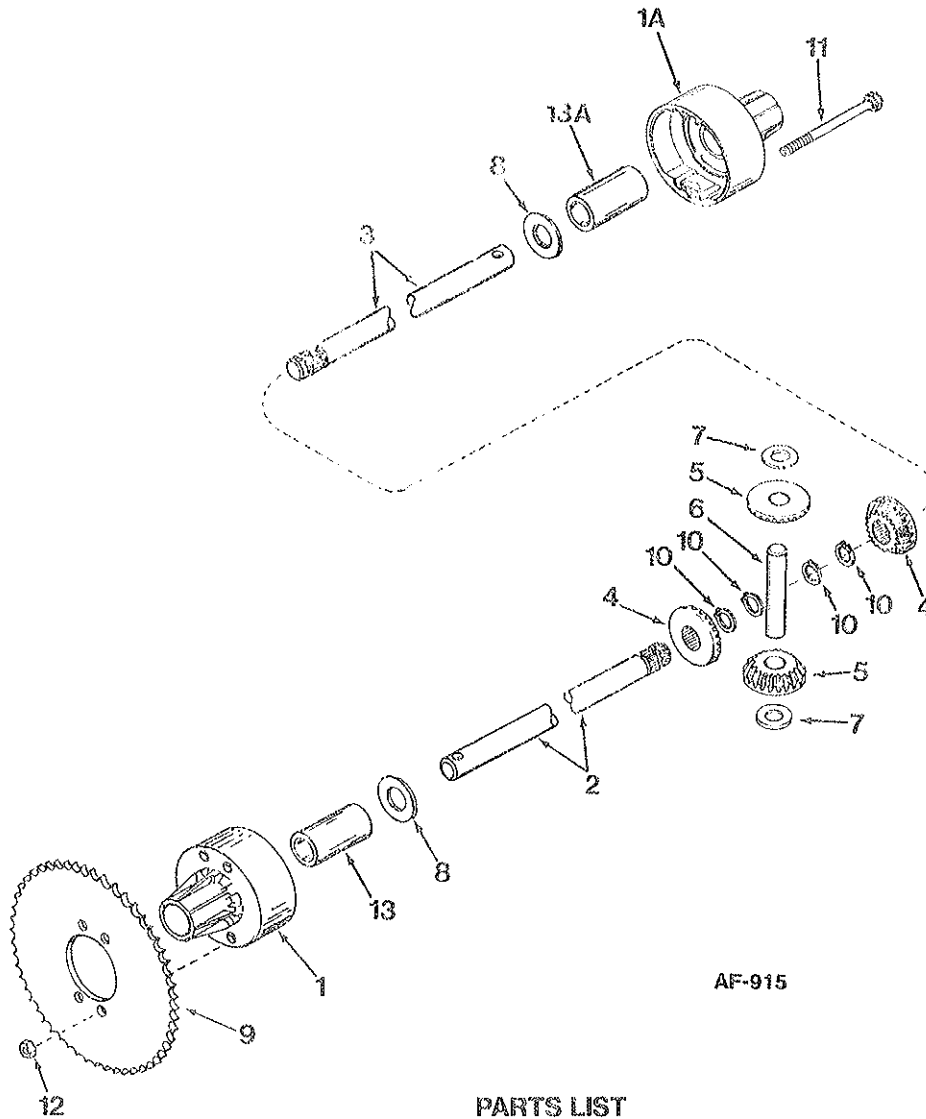
# REPAIR PARTS

## PEERLESS "750"-A TRANSMISSION

### PARTS LIST

Ref. No.	Part No.	Description
1	770061	Case, Transmission
2	772083	Cover, Transmission
3	776161	Shaft, Output & Brake
4	778121A	Gear, Spur (20 teeth)
5	778122A	Gear, Spur (22 teeth)
6	778123A	Gear, Spur (25 teeth)
7	778124A	Gear, Spur (30 teeth)
8	778125	Gear, Spur (35 teeth)
9	784266	Collar, Shift
10	786060	Sprocket (14 teeth)
11	786061	Sprocket (10 teeth)
12	776134	Shaft, Counter
13	778109	Gear, Bevel (42 tooth & 15 tooth spur gear)
14	778126A	Gear, Spur (20 teeth)
15	778127A	Gear, Spur (25 teeth)
16	778128A	Gear, Spur (28 teeth)
17	778129A	Gear, Spur (30 teeth)
18	776135	Shaft, Input
19	778113A	Bevel Pinion, Input
20	786047	Sprocket (8 teeth)
21	790003	Disk, Brake
22	790013	Lever, Brake
23	790025	Holder, Brake pad
24	790006	Pad, Brake
25	790007	Plate, Brake pad
26	786026	Pin, Dowel
27	780105A	Bushing, Flanged
28	786062	Chain, Roller (No. 41 chain, 22 links)
29	780072	Washer, Thrust
30	780086	Bearing, Needle
31	792072	Ring, Retaining
32	792035	Ring, Retaining
33	780109	Washer
34	788040	Ring, Retaining
35	784267	Rod & Fork Assy., Shift
36	792073	Screw, Hex. Hd. Taptite, 1/4-20x2 1/4
37	792089A	Key
38	792075	Nut, Lock, 5/16-24
39	792076	Washer, Flat, 5/16
40	792077	Ball, Steel, 5/16"
41	792078	Screw, Set, 3/8-16x3/8
42	792079	Spring
43	780108	Washer, Thrust
44	792001	"O" Ring
45	792074	Plug
46	788054	Gasket
47	786046	Bracket

**PEERLESS DIFFERENTIAL  
MODEL 100-092**



AF-915

**PARTS LIST**

Ref. No.	Part No.	Description
1	774484	Housing, Differential carrier (Incl. No. 13)
1A	774485	Housing, Differential carrier (Incl. No 13A)
2	774774	Axle (8-3/4" long)
3	774773A	Axle (18-3/8" long)
4	778221	Gear, Bevel
5	778068	Gear, Pinion
6	786040	Pin, Drive
7	780096	Washer, Thrust
8	780001	Washer
9	786042	Sprocket
10	792125	Ring, Retaining (Pkg. of 2)
11	792041	Screw, Flanged Hex Hd., 5/16-18 x 3-3/4
12	792042	Nut, Lock, 5/16-18
13	780077	Bushing
13A	780124	Bushing