



## Electronic Service Manuals

This electronic document is provided as a service to our customers. We do not create the contents of the information contained in this document. Should you have detailed questions pertaining to the information contained in this document, you may contact Michco, or the manufacturer which provided the original information in this electronic deliverable. Michco's only part in this electronic deliverable was the electronic assembly process. By providing this manual on line we are not guaranteeing parts availability.

You may contact Michco through the following methods:

Phone (517) 484-9312 or (800) 331-3339

2011 N. High St. -- Lansing, Michigan -- 48906

Fax: (517) 484-9836

Email: [CustServe@Michco.com](mailto:CustServe@Michco.com)

Web site: [www.Michco.Com](http://www.Michco.Com)

Parts Web site: [www.FloorMachineParts.Com](http://www.FloorMachineParts.Com)

Order Parts on Line at:

**[www.FloorMachineParts.Com](http://www.FloorMachineParts.Com)**

Directly to Parts & Service:

By Email: **[Shop@Michco.com](mailto:Shop@Michco.com)**

By Fax: (517) 702-2041

By Voice: Use numbers above.

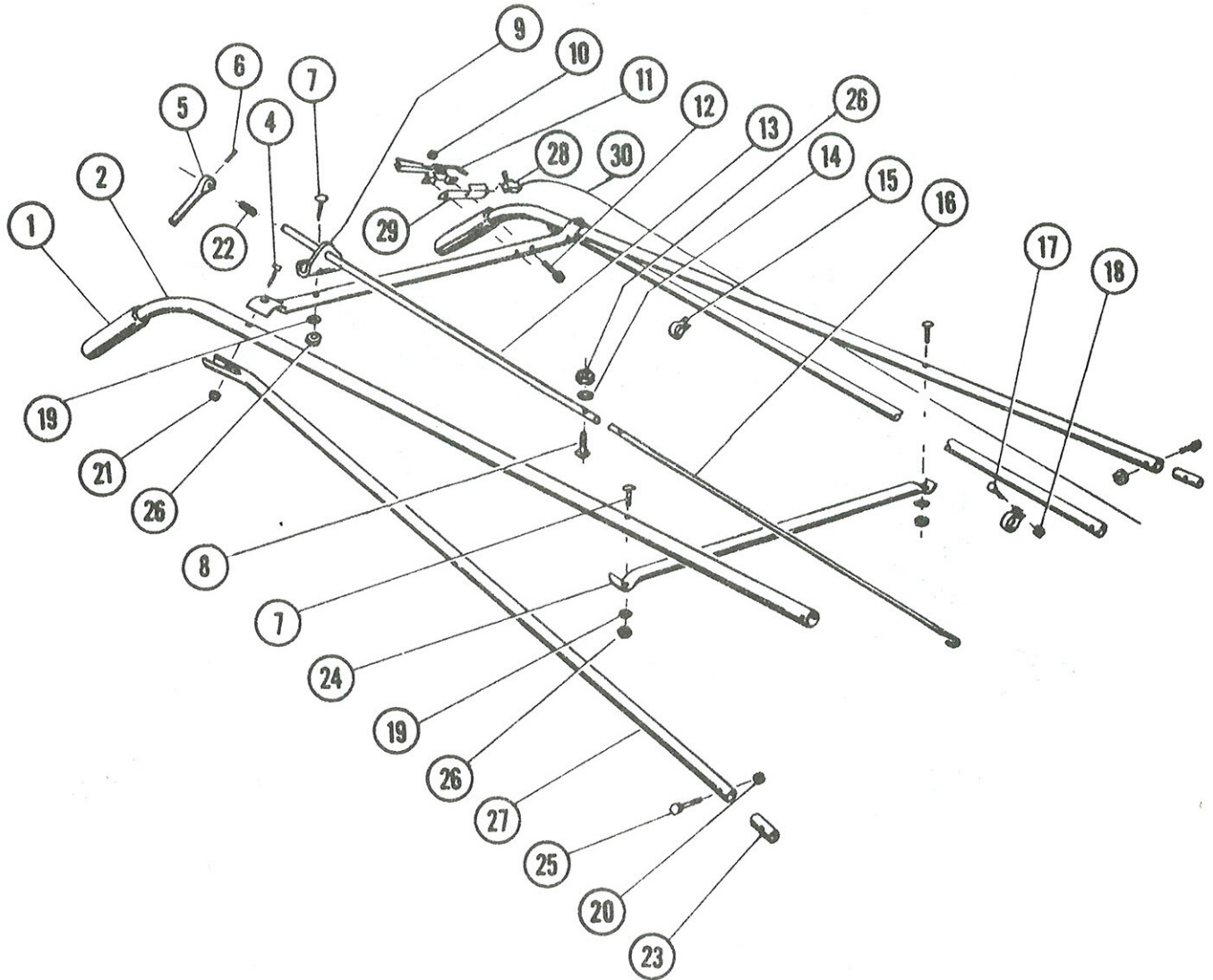
**Serving the Cleaning Industry Since 1922**

Notice: All copyrighted material remains property of original owners, all trademarks are property of respective owners. Manuals are subject to Manufacturer's reproduction limitations. Originals or reproductions were provided by manufacturers through a request. We make no warranty as to the correctness of information provided in this document and you assume all risk. By placing these manuals on line we are not declaring our corporation to be an manufacturer authorized dealer or provider, please check our web site for authorized manufacturers we represent.

# SELF-PROPELLED HURRICANE

SECTION 8

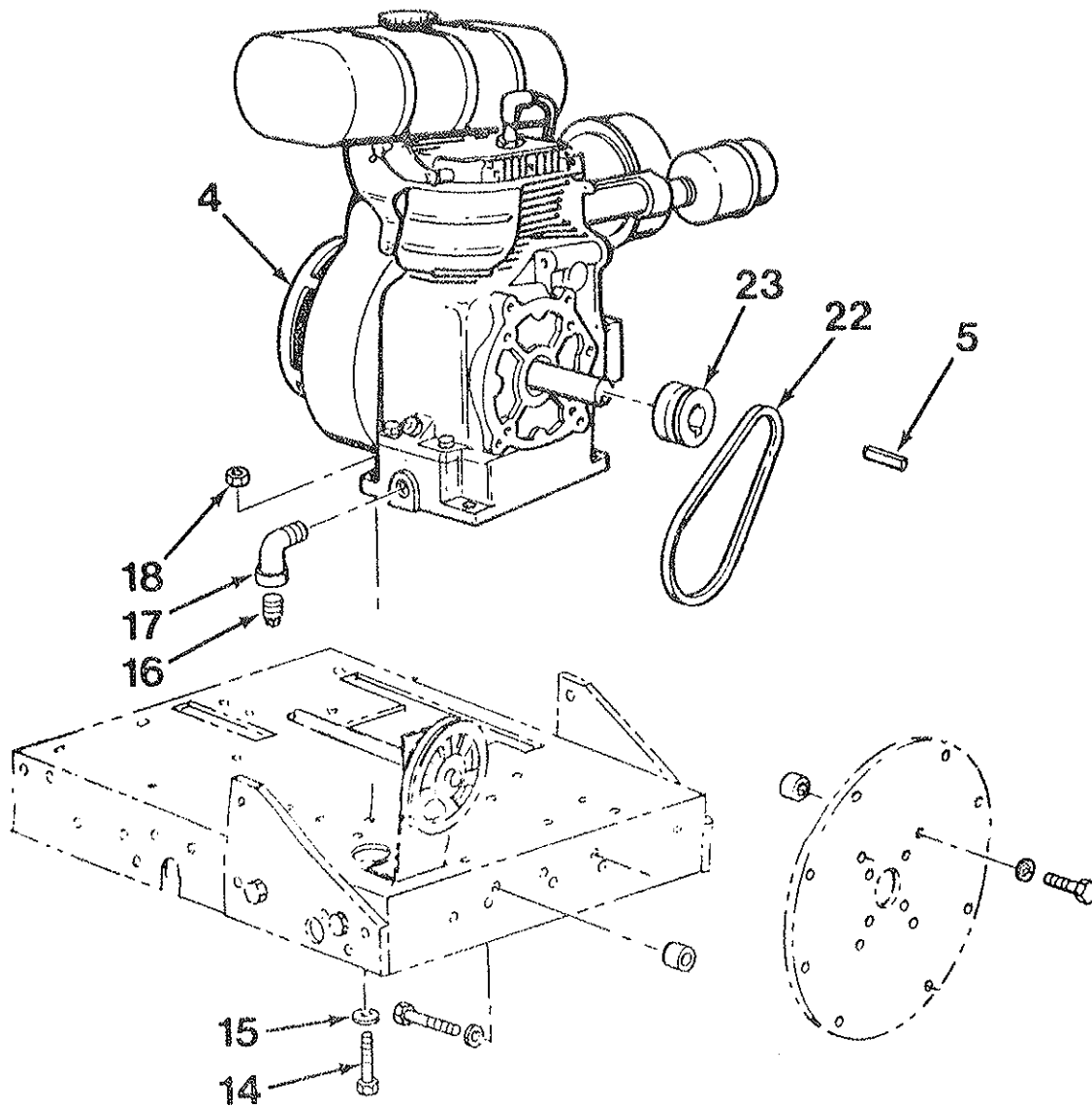
## MODEL HC-7560-SP



### PARTS LIST

Ref. No.	Part No.	Qty. Per Unit	Description of Part	Ref. No.	Part No.	Qty. Per Unit	Description of Part
1	61-26-A	2	Handle Grip	16	76-31-A	1	Control Rod Weldment
2	73-373-C	2	Handle	17	515-8-8	2	Screw Rd. Hd. Mach. 8-32 x 1/2
3	73-365-B	1	Cross Bar - Upper	18	365-8	2	Nut-Hex Lock 8-32
4	65-416-20	2	Bolt Hex Hd. 1/4-20 x 1 1/4	19	935-416	3	Washer-Spring Lock
5	76-34-A	1	Lever	20	365-516	4	Nut-Hex Lock 5/16-18
6	67-521-A	1	Roll Pin	21	365-416	2	Nut-Hex Lock 1/4-20
7	69-416-20	3	Bolt Cont. Hd. 1/4-20 x 1 1/4	22	74-135-A	1	Spring
8	69-416-16	1	Bolt-Cont. Hd. 1/4-20 x 1	23	75-30-A	4	Insert Ends
9	74-137-A	1	Bracket	24	61-11-B	1	Cross Bar Lower
10	365-10	2	Nut-Hex Lock 10-24	25	65-516-20	4	Bolt-Hex Hd. 5/16-18 x 1 1/4
11	68-393-A	1	Throttle Control Assembly	26	335-416	4	Nut-Plain Hex 1/4-20
12	517-10-16	2	Screw-Oval Hd. 10-24 x 1	27	73-364-C	2	Truss Brace
13	76-33-A	1	Control Rod (Upper)	28	75-91-A	1	Switch
14	936-416	1	Washer-Int. Lock	29	75-77-B	1	Switch Bracket
15	68-101-A	2	Clamp Control	30	75-97-A	1	Wire Assembly

# ENGINE ASSEMBLY



## PARTS LIST

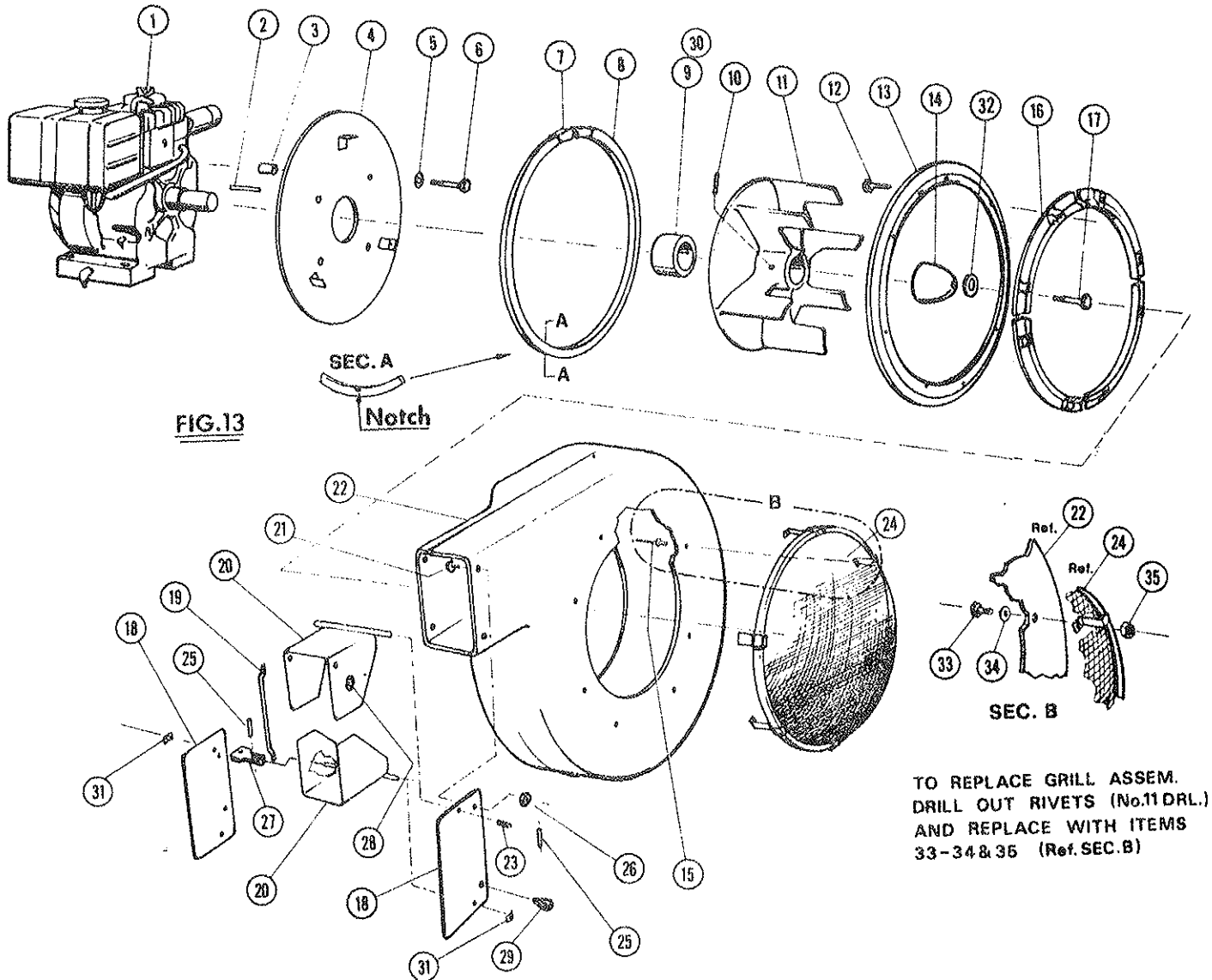
Ref. No.	Part No.	Qty. Per Unit	Description of Part	Ref. No.	Part No.	Qty. Per Unit	Description of Part
4	65-34-A	1	Engine, Kohler	16	**	1	Pipe Plug, Oil Drain
4	65-550-A	-	Engine, Kohler LP	17	57-81-A	1	Street Elbow 1/2 x 90°
5	74-112-A	1	Fan Key 1/4 x 2 3/8	18	365-616	4	Nut, 3/8-16, Hex Hd., Lock
14	65-616-20	4	Bolt, 3/8-16 x 1 1/4, Hex Hd.	22	73-417 A	1	V Belt, 3L-210
15	945-616	4	Flat Washer, 3/8	23	74-119-A	1	Pulley, Engine

\*\* Supplied with Engine

OPTIONAL ACCESSORY  
 MA-288-D DISCHARGE HOSE KIT  
 FOR  
 MODELS HC-7480, HC-7560, HC-7560-SP

# BLOWER ASSEMBLY

HC-7560-SP



## PARTS LIST

Ref. No.	Part No.	Qty. Per Unit	Description of Part	Ref. No.	Part No.	Qty. Per Unit	Description of Part
1	Engine		See Fig. 15	19	73-126-A	1	Link-Exhaust Def.
2	63-130-A	1	Key	20	73-125-B	2	Exhaust Deflt. Weld.
3	73-414-A	4	Spacer-Back Plate	21	65-416-12	4	Bolt-Hex. Hd. 1/4-20 x 3/4
4	73-375-C	1	Back Plate Weldment	22	73-79-F	1	Blower Housing
5	935-616	5	Washer-Spring Lock 3/8	23	73-372-A	1	Spring
6	65-616-24	4	Bolt-Hex Hd. 3/8-16 x 1 1/2	24	73-121-C	1	Grill Assembly
7	73-377-A	1	Latch-Retaining Ring	25	60-62-A	2	Roll Pin 1/8 dia. x 3/4
8	73-135-C	1	Retaining Ring	26	365-416	4	Nut-Hex Lock 1/4 x 20
9	73-415-A	1	Spacer-Fan B/S Engine	27	73-127-A	1	Connector-Control Rod
10	564-C-516-6	1	Screw-Set 9/16-18 x 3/8	28	73-406-A	1	Friction Disc.
11	73-118-D	1	Fan	29	75-79-A	1	Knob
12	505-416-20	8	Screw-Flat Hd. 1/4-20 x 1 1/4	30	74-154-A	1	Spacer-Fan - Kohler Eng.
13	73-122-C	1	Pivot Ring	31	75-80-A	2	Shaft-Retainer
14	73-119-A	1	Retainer Fan	32	935-716	1	Washer-Spring Lock
15	410-6-402	1	Pop Rivet	33	515-10-10	6	Screw Rd. Hd. 10-24 x 5/8
16	73-123-C	4	Anti-Wrap	34	945-10	6	Washer Flat
17	65-39-A	1	Bolt-Fan	35	365-10	6	Nut Hex Lock 10-24
18	63-124-B	2	Exhaust Side Plate				

# CHASSIS ASSEMBLY

## PARTS LIST

Ref. No.	Part No.	Description of Part	Qty. Per Unit	Ref. No.	Part No.	Description of Part	Qty. Per Unit
1	55-130-A	Knob, Ball	1	40	74-102-A	Bracket, Bearing	2
2	935-516	Lock Washer, 5/16 Spring	1	41	74-100-C	Sprocket, Differential, 40 Teeth	1
3	65-516-12	Bolt, 5/16-18 x 3/4 Hex Hd.	4	42	SA-459-B	Differential Assembly	1
4	335-416	Nut, 1/4-20 Hex Plain	1	43	364-516	Nut, 5/16-18 Hex Lock Thin	4
5	935-416	Lock Washer 1/4 Spring	1	44	74-105-A	Bearing	2
6	945-416	Washer, 1/4 Flat	1	45	68-310-B	Wheel Assembly	2
7	69-416-20	Bolt, 1/4-20 x 1 1/4 Contour Hd.	1		68-311-B	Wheel	2
8	945-516	Washer, 5/16 Flat	2		68-312-A	Tire 5.10/4.50 x 6	2
9	364-516	Nut, 5/16-18 Hex Lock Thin	1		68-313-A	Valve Stem	2
10	59-29-A	Spacer	1	46	65-416-24	Bolt, 1/4-20 x 1 1/2 Hex Hd.	2
11	946-816-16	Washer, Fiber	1	47	935-416	Lockwasher, 1/4 Spring	2
12	74-03-A	Bracket	1	48	335-416	Nut, 1/4-20 Hex Plain	2
13	70-67-A	Lever, Shift	1	49	73-362-C	Bracket, Handle	2
14	65-416-8	Bolt, 1/4-20 x 1/2 Hex Hd.	3	50	74-99-F	Chassis	1
15	74-171-D	Guard, Chain	1	51	74-88-A	Drive Shaft	1
16	74-167-A	Spring, Brake	1	52	66-41-A	Bearing, Seal Master	1
17	74-96-A	Lever, Brake	1	53	75-94-B	Guard, Belt	1
18	380-332-12	Pin, Cotter	1	54	74-86-A	Sheave, Drive	1
19	74-107-A	Rod, Speed Control	1	55	74-87-C	Bracket, Bearing	1
20	75-12-A	Control Arm Assembly, Shift	1	56	945-516	Washer, 5/16 Flat	2
21	365-416	Nut, 1/4-20 Hex Lock	1	57	74-89-B	Jack Shaft Weldment	1
22	945-416	Washer, 1/4 Flat	2	58	74-117-A	Chain, Roller, #41-32P Transmission to Jackshaft	1
23	75-10-A	Spacer	1	59	74-118-A	Chain, Roller, #41-50P Jackshaft to Differential	1
24	74-95-D	Bracket, Shift Control	1	60	74-116-A	Bearing Assembly, Side Flange	2
25	65-416-28	Bolt, 1/4-20 x 1 3/4	1	61	280-09	#9 Woodruff Key Comes with Transmission	1
26	60-416-10	Bolt, 1/4-28 x 5/8 Hex Hd.	1	62	530-7-6	Screw #7 x 3/8 Type A Sheet Metal	2
27	935-416	Lock Washer, 1/4 Spring	1	63	515-10-6	Screw #10-24 x 3/8 Rd. Hd. Mach.	1
28	74-97-A	Link, Speed Control	1	64	365-10	Nut #10-24 Hex Lock	1
29	74-106-A	Lever, Transmission	1	65	73-114-C	Guard	1
30	SA-458-A	Transmission, Mechanical	1	66	74-130-A	Bracket	2
31	48-277-A	Key, 3/16 Square	1	67	65-516-20	Bolt-Hex Hd. 5/16-18 x 1 1/4	2
32	65-516-12	Bolt, 5/16-18 x 3/4 Hex Hd.	24	68	365-516	Nut-Hex Lock 5/16-18	2
33	74-94-B	Brace, Transmission Bracket	1	69	994-8	Snap Ring	2
34	365-516	Nut, 5/16-18 Hex Lock	22	70	73-418-A	Axle	1
35	74-93-C	Bracket, Transmission	1	71	74-169-A	Spacer	2
36	74-114-A	Coupling, Flexible	1	72	55-161-A	Washer-Special	3
37	75-95-C	Guard, Shaft	1	73	66-432-A	Bearing	4
38	935-516	Lockwasher, 5/16 Spring	4	74	66-436-A	Roller	2
39	65-516-16	Bolt, 5/16-18 x 1 Hex Hd.	4	75	74-168-A	Wheel Spacer	2

# CHASSIS ASSEMBLY

*FW  
JA-9/15-C*

