



Electronic Service Manuals

This electronic document is provided as a service to our customers. We do not create the contents of the information contained in this document. Should you have detailed questions pertaining to the information contained in this document, you may contact Michco, or the manufacturer which provided the original information in this electronic deliverable. Michco's only part in this electronic deliverable was the electronic assembly process. By providing this manual on line we are not guaranteeing parts availability.

You may contact Michco through the following methods:

Phone (517) 484-9312 or (800) 331-3339

2011 N. High St. -- Lansing, Michigan -- 48906

Fax: (517) 484-9836

Email: CustServe@Michco.com

Web site: www.Michco.Com

Parts Web site: www.FloorMachineParts.Com

Order Parts on Line at:

www.FloorMachineParts.Com

Directly to Parts & Service:

By Email: **Shop@Michco.com**

By Fax: (517) 702-2041

By Voice: Use numbers above.

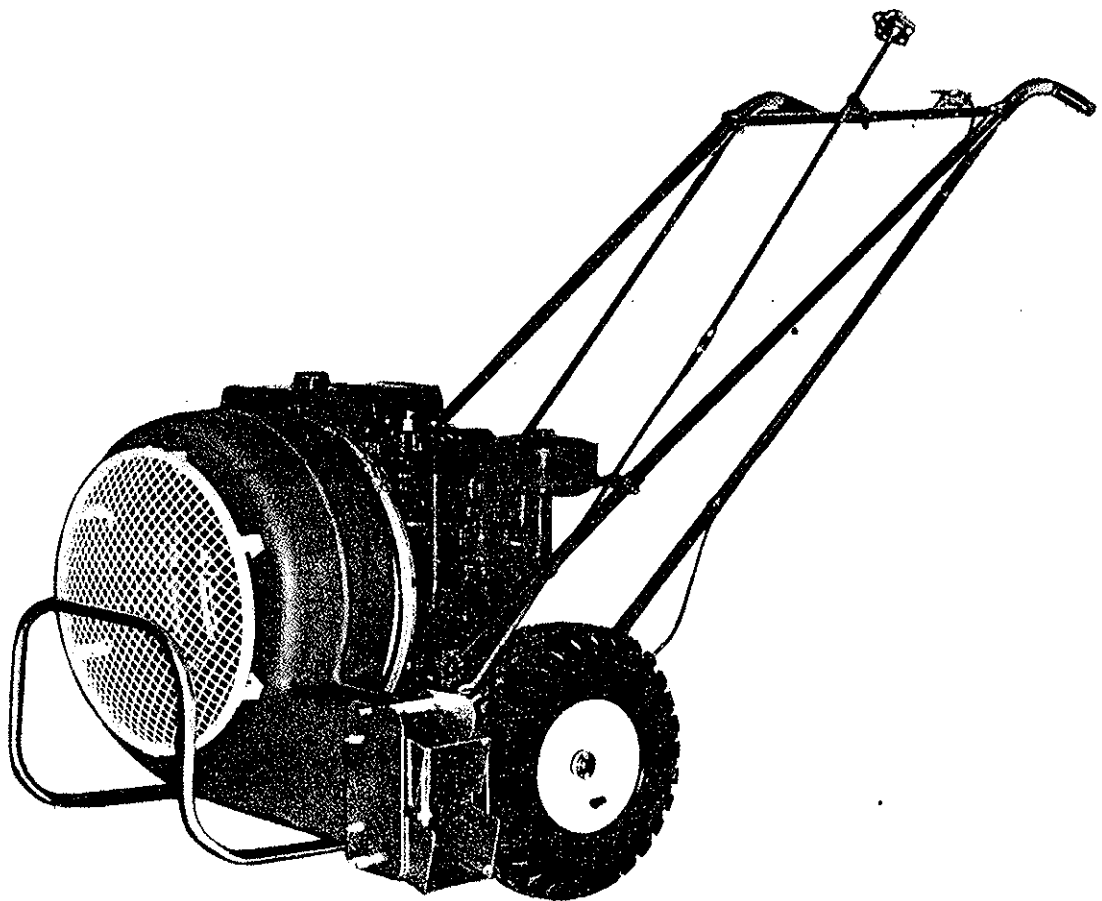
Serving the Cleaning Industry Since 1922

Notice: All copyrighted material remains property of original owners, all trademarks are property of respective owners. Manuals are subject to Manufacturer's reproduction limitations. Originals or reproductions were provided by manufacturers through a request. We make no warranty as to the correctness of information provided in this document and you assume all risk. By placing these manuals on line we are not declaring our corporation to be an manufacturer authorized dealer or provider, please check our web site for authorized manufacturers we represent.

OWNERS GUIDE



HURRICANE MODEL HC-7480



Sht. 1 of 7 -Plate No. 183-

PARKER SWEEPER COMPANY Box 720 Springfield, Ohio 45501

ASSEMBLY INSTRUCTIONS HC-7480

PACKAGING

Your Hurricane has been shipped in two cartons.

Carton 1 of 2 contains the Hurricane Unit, Control Rod Assembly, Exhaust Deflector Assembly and Bag containing Cable Clamps, Screws and Lock Nuts.

Carton 2 of 2 contains the parts for the Handle Assembly and Bag containing the hardware for assembly.

HANDLE ASSEMBLY

NOTE: It is to the best advantage to leave all bolts and nuts loose during the Handle Assembly. When the assembly is complete tighten all bolts and nuts.

Fig. 1 & Fig. 11 - Assemble the Upper Cross Bar to the Handle and Truss as shown. Use the upper hole in the Truss.

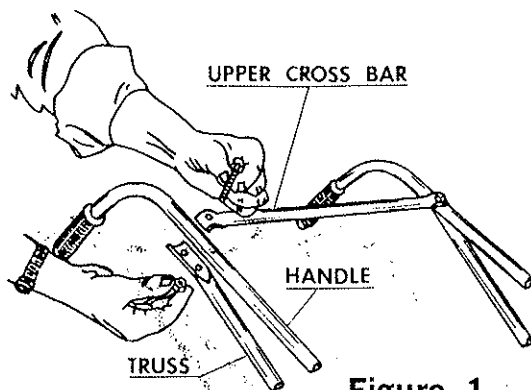


Figure 1

Fig. 2 & Fig. 11 - Assemble the Lower Cross Bar to the Handles as shown. Now attach the Handle and Truss to the Handle Brackets as shown. Be sure to use the Inserts.

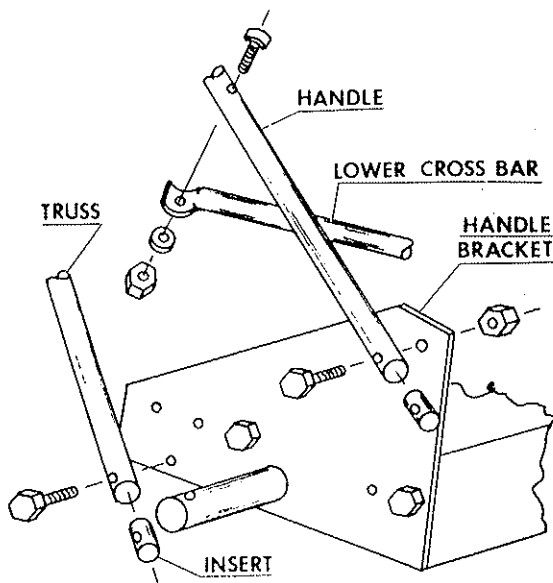


Figure 2

THROTTLE ASSEMBLY

Fig. 3 - Unwrap the Throttle Control Assembly at the Engine and position the cable along the left hand truss, attaching it to the Truss with the Cable Clamps. Now attach the Throttle Control Lever to the Upper Cross Bar as shown (also Ref. Fig. 11).

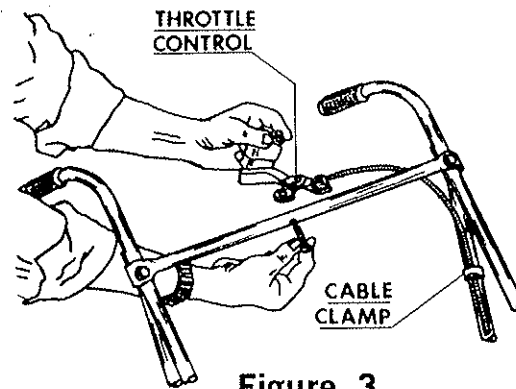


Figure 3

Fig. 4 - Shows (Throttle Control Assembly) Cable attached to the engine.

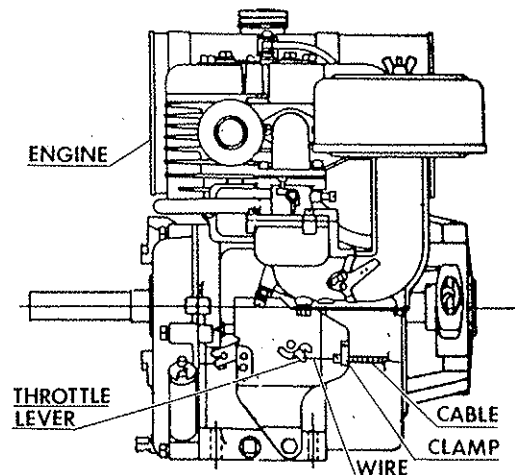


Figure 4

EXHAUST DEFLECTOR ASSEMBLY INSTALLATION

Fig. 5 - The Hurricane Unit is shipped with the Blower Housing in a straight up position.

NOTE: Fig. 5 & 6 & 7 as seen from operator's position.

ASSEMBLY & OPERATING INSTRUCTIONS HC-7480

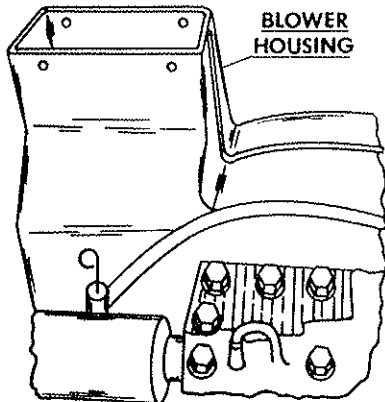


Figure 5

Fig. 6 & 13 - Remove the 4 bolts and lock nuts from the Exhaust Deflector Assembly and attach it to the Blower Housing with the same bolts and lock nuts.

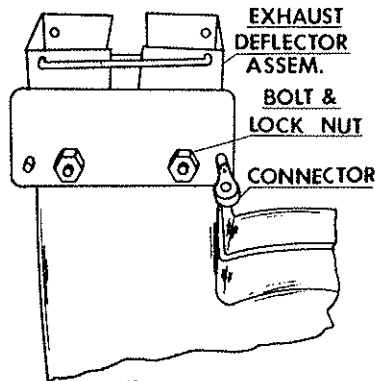


Figure 6

CONTROL ROD INSTALLATION

Fig. 7 and Fig. 11 - Attach the Control Rod (lower) to the Connector (fastened to the Exhaust Deflector Assembly) then assemble to the Handle Assembly as shown in Fig. 11.

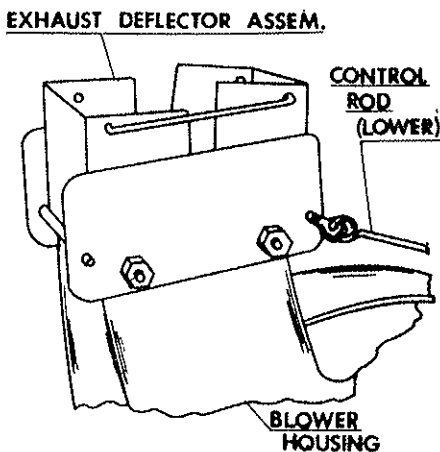


Figure 7

NOTE: Now tighten all bolts and nuts.

FOR SAFE OPERATION

TO PREVENT ACCIDENTAL STARTING ALWAYS REMOVE THE SPARK PLUG before working on the engine or equipment driven by the engine.

DO NOT RUN THE ENGINE IN AN ENCLOSED AREA. Exhaust gases contain carbon monoxide which is odorless and deadly poison.

DO NOT FILL GASOLINE TANK WHILE ENGINE IS HOT OR RUNNING. Spilling gasoline on a hot engine may cause a fire or explosion.

DO NOT leave machine unattended while running.

DO NOT ALLOW machine to blow in direction of people or objects that could be injured by blown materials.

AVOID operating machine in dangerous places where steep slopes or loose debris will endanger the safety of operator or other people.

LUBRICATION

The only Lubrication necessary is a couple drops of light oil on the Throttle Control Lever and Throttle Wire where it enters the Cable, also on the moving parts on the Exhaust Deflector.

OPERATING INSTRUCTIONS

Before starting the Engine, read the Operating and Maintenance Instruction Manual. Add proper gasoline and oil to correct level.

Engine should be "broke in" by running at $\frac{1}{2}$ throttle for 30 minutes and full throttle for an additional 30 minutes.

Machine will operate effectively by either pushing or pulling.

Your Hurricane Blower can be used as either a Low Blow or Hi Blow depending on the application.

For moving heavy debris such as sticks, cleaning out flower beds, anything heavier than leaves, use the Low Blow.

For controlled blowing of leaves into windrows and stacking use the Hi Blow.

ASSEMBLY & OPERATING INSTRUCTIONS HC-7480

ADJUSTING THE BLOWER HOUSING TO HI OR LOW BLOW ENGINE MUST BE STOPPED WITH THE SPARK PLUG WIRE DISCONNECTED.

Fig. 8 - Move the Latch Lock off the Latch Arm and lift up the Latch Arm. Hold the Latch Arm up and pivot the Exhaust Deflector around to the desired position then push the Latch Arm down and lock with the Latch Lock.

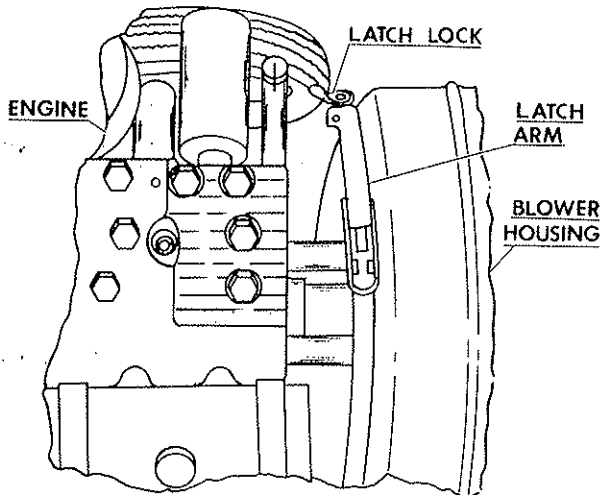


Figure 8

It is not necessary to detach the Exhaust Deflector Control Rod Assembly. It will pivot with the Blower Housing to any position.

By turning the Knob on the Control Rod Assembly fastened to the Upper Cross Bar, the deflection angle can be changed to control the air flow from the Exhaust Deflector.

Fig. 9 - Shows Exhaust Deflector in the Low Blow position.

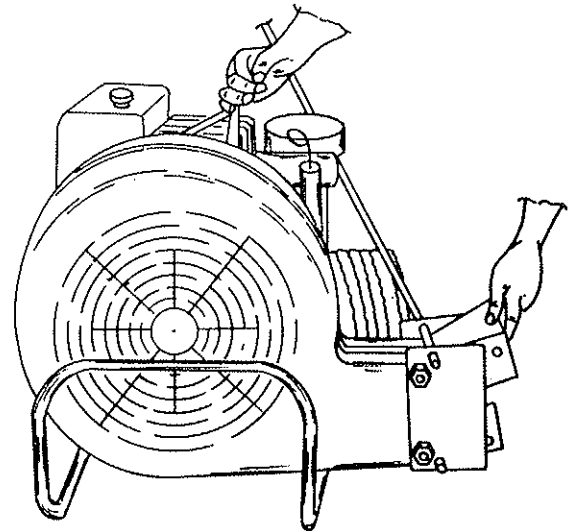


Figure 9

Fig. 10 - Shows Exhaust Deflector in the Hi Blow position.

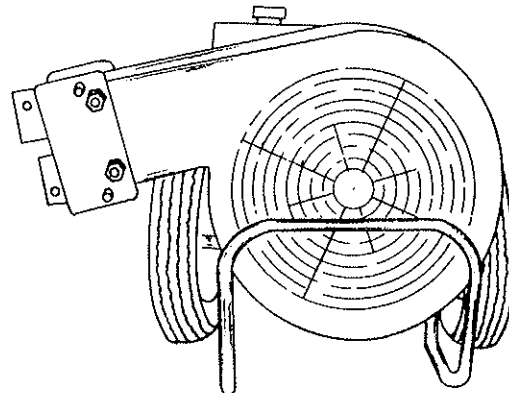


Figure 10

Shl. 4 of 7 -Plate No. 186-

ALWAYS GIVE THE FOLLOWING INFORMATION WHEN ORDERING REPAIR PARTS:

1. PART NUMBER (Not Ref. No.)
2. QUANTITY NEEDED
3. DESCRIPTION OF PART
4. MODEL No. HC-7480

If unable to obtain parts locally, write down above information and send to:
PARKER SWEEPER CO., BOX 720, SPRINGFIELD, OHIO 45501

Your unit is right hand (R.H.) or left hand (L.H.) as you stand behind it.

IMPORTANT

HANDLE ASSEMBLY HC-7480

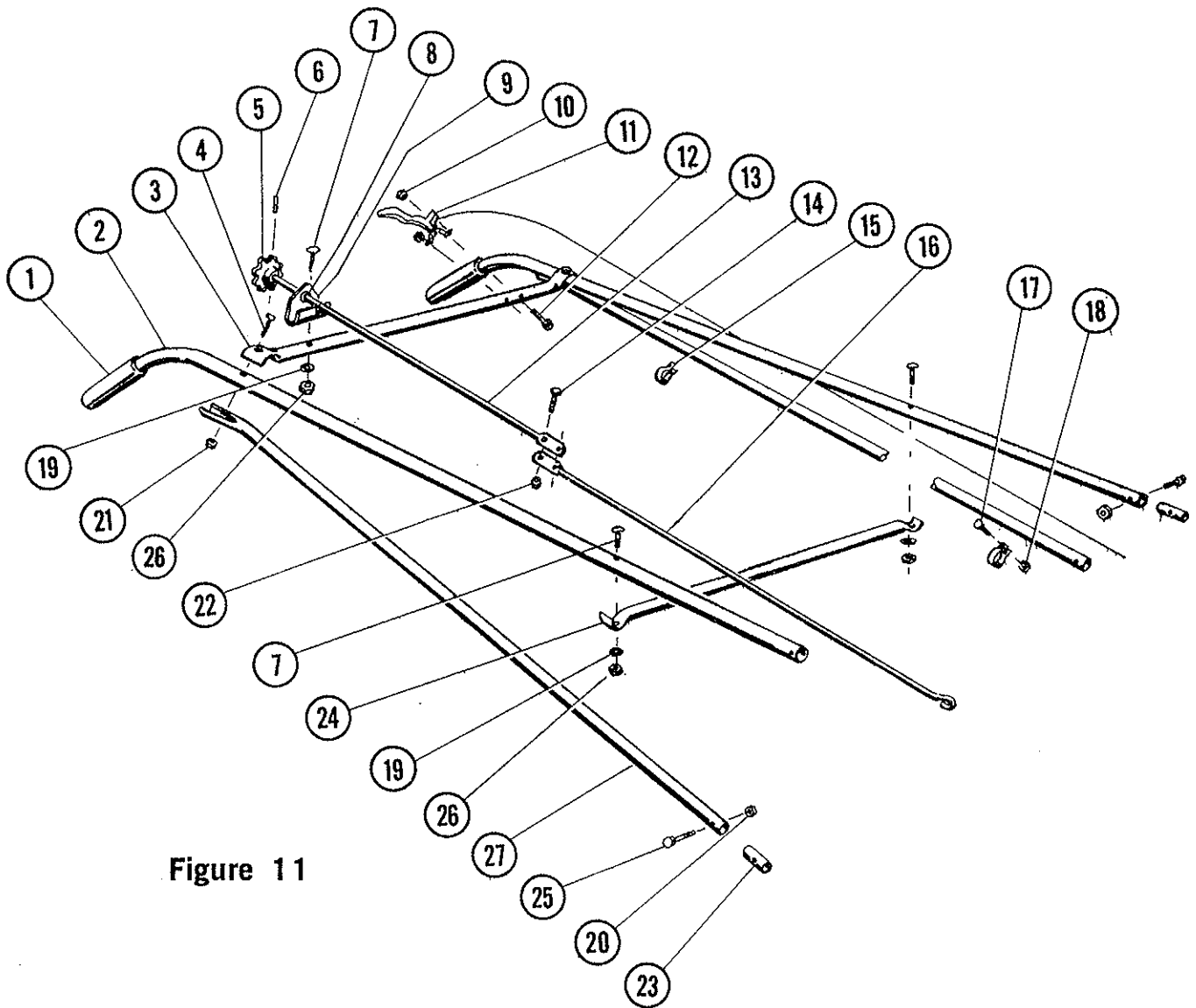


Figure 11

PARTS LIST Figure 11

Ref. No.	Part No.	Qty. Per Unit	Description of Part	Ref. No.	Part No.	Qty. Per Unit	Description of Part
1	61-26-A	2	Handle Grip	15	68-101-A	2	Clamp Control
2	73-373-C	2	Handle	16	73-402-B	1	Control Rod (Lower)
3	73-365-B	1	Cross Bar - Upper	17	515-8-8	2	Screw Rd. Hd. Mach. 8-32 x 1/2
4	65-416-20	2	Bolt Hex Hd. 1/4-20 x 1 1/4	18	365-8	2	Nut-Hex Lock 8-32
5	73-370-A	1	Knob Control	19	935-416	3	Washer-Spring Lock
6	60-62-A	1	Roll Pin	20	365-516	4	Nut-Hex Lock 5/16-18
7	69-416-20	3	Bolt Cont. Hd. 1/4-20 x 1 1/4	21	365-416	2	Nut-Hex Lock 1/4-20
8	73-374-A	1	Grommet-Rubber	22	365-1024	2	Nut-Hex Lock 10-24
9	62-128-A	1	Bracket	23	61-13-A	4	Insert Ends
10	365-10	2	Nut-Hex Lock 10-24	24	61-11-B	1	Cross Bar Lower
11	62-95-A	1	Throttle Control Assembly	25	65-516-20	4	Bolt-Hex Hd. 5/16-18 x 1 1/4
12	517-10-16	2	Screw-Oval Hd. 10-24 x 1	26	335-416	3	Nut-Plain Hex 1/4-20
13	73-371-A	1	Control Rod (Upper)	27	73-364-C	2	Truss Brace
14	515-10-8	2	Screw. Rd. Hd. Mach. 10-24 x 1/2				

CHASSIS AND ENGINE ASSEMBLY HC-7480

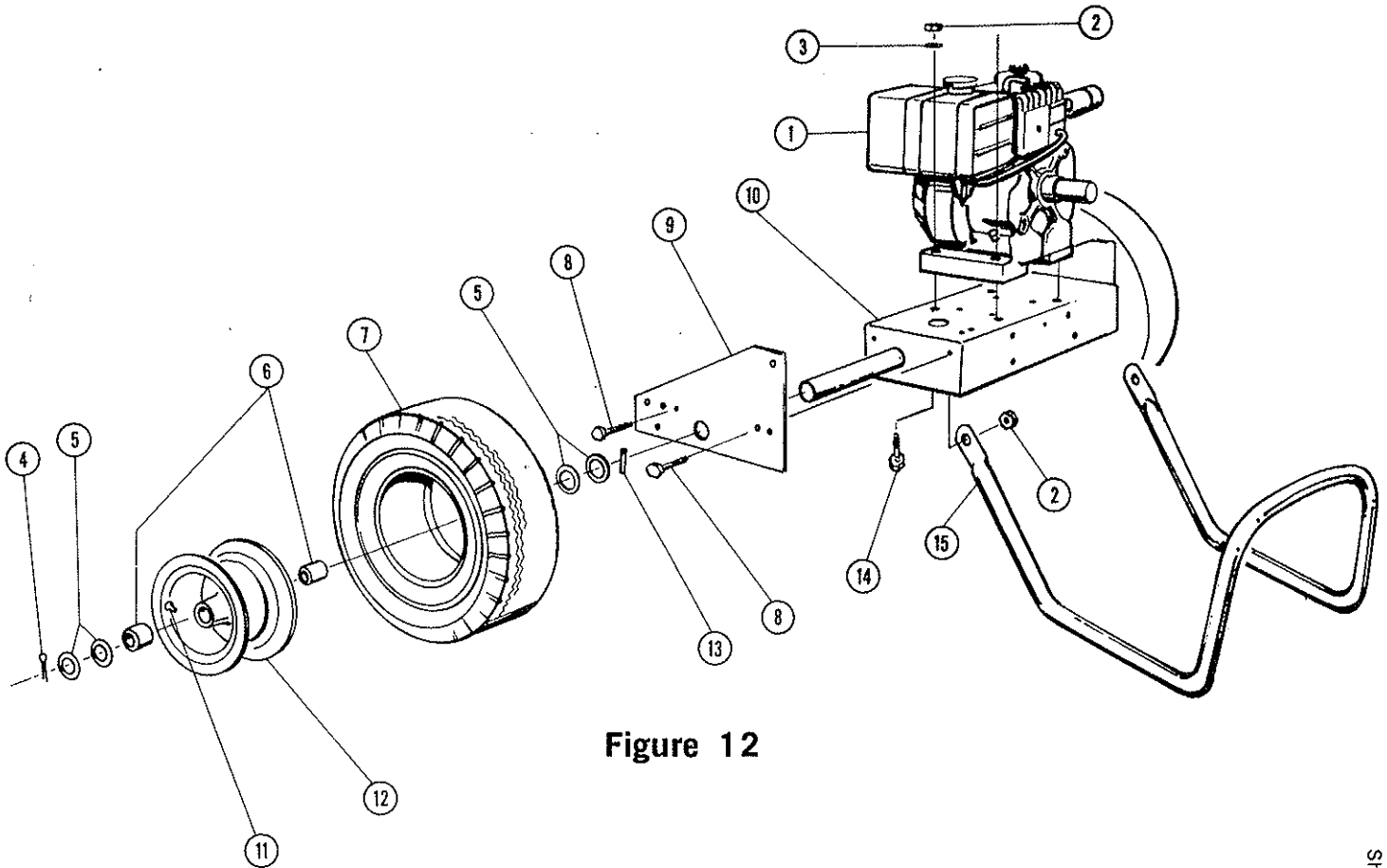


Figure 12

PARTS LIST Figure 12

Ref. No.	Part No.	Qty. Per Unit	Description of Part	Ref. No.	Part No.	Qty. Per Unit	Description of Part
1	73-102-A	1	Engine B/S	9	73-362-C	2	Handle Bracket
2	365-516	8	Nut-Hex Lock	10	73-360-C	1	Chassis Weldment
3	945-516	4	Washer-Flat	11	68-313-A	2	Valve
4	380-432-20	2	Cotter Pin $\frac{1}{8}$ dia. x $1\frac{1}{4}$	12	68-447-B	2	Wheel
5	945-1216	8	Washer Flat	13	65-521-A	1	Roll Pin
6	67-03-A	4	Wheel Bearing	14	65-516-28	4	Bolt Hex Hd. $\frac{5}{16}$ x $1\frac{1}{2}$ x $1\frac{3}{4}$
7	68-312-A	2	Tires 5.30/4.50 x 6	15	73-114-C	1	Blower Guard
8	65-516-12	4	Bolt-Hex Hd. $\frac{5}{16}$ -18 x $\frac{3}{4}$				

BLOWER ASSEMBLY HC-7480

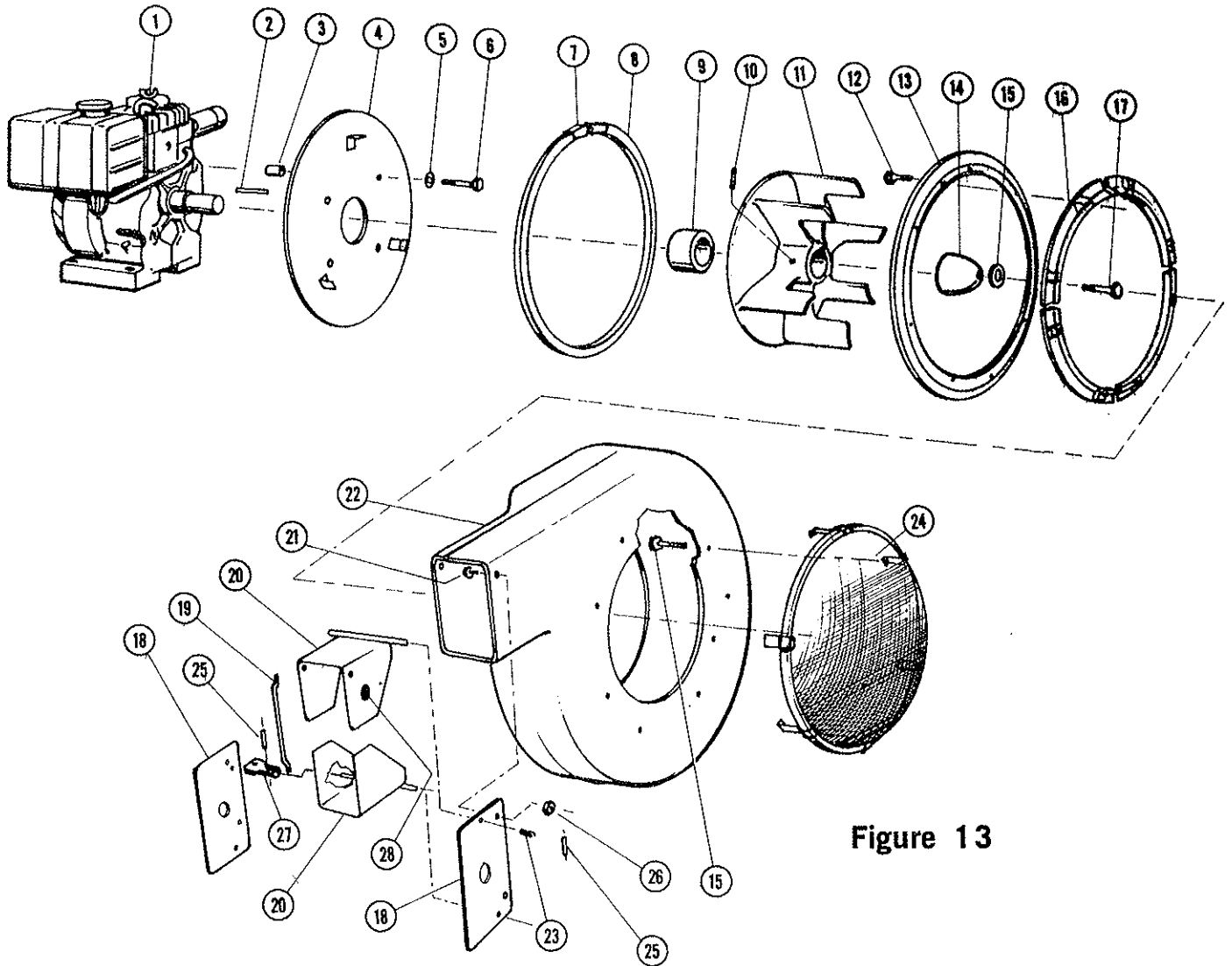


Figure 13

PARTS LIST Figure 13

Ref. No.	Part No.	Qty. Per Unit	Description of Part	Ref. No.	Part No.	Qty. Per Unit	Description of Part
1	Engine		See Fig. 12.	15	534-7-8	6	Screw-Hex Washer Hd.
2	63-130-A	1	Key	16	73-123-C	4	Anti-Wrap
3	73-116-A	4	Spacer-Back Plate	17	73-413-A	1	Bolt-Fan
4	73-375-C	1	Back Plate Weldment	18	63-124-B	2	Exhaust Side Plate
5	935-616	5	Washer-Spring Lock $\frac{3}{8}$	19	73-126-A	1	Link-Exhaust Def.
6	65-616-16	4	Bolt-Hex Hd. $\frac{3}{8}$ -16 x 1	20	73-125-B	2	Exhaust Def. Weld.
7	73-377-A	1	Latch-Retaining Ring	21	65-416-12	4	Bolt-Hex. Hd. $\frac{1}{4}$ -20 x $\frac{3}{4}$
8	73-135-C	1	Retaining Ring	22	73-79-F	1	Blower Housing
9	73-117-A	1	Spacer-Fan	23	73-372-A	1	Spring
10	564-C-516-6	1	Screw-Set $\frac{5}{16}$ -18 x $\frac{3}{8}$	24	73-121-C	1	Grill Assembly
11	73-118-D	1	Fan	25	60-62-A	2	Roll Pin $\frac{1}{8}$ dia. x $\frac{3}{4}$
12	505-416-20	8	Screw-Flat Hd. $\frac{1}{4}$ -20 x $1\frac{1}{4}$	26	365-416	4	Nut-Hex Lock $\frac{1}{4}$ x 20
13	73-122-C	1	Pivot Ring	27	73-127-A	1	Connector-Control Rod
14	73-119-A	1	Retainer Fan	28	73-406-A	1	Friction Disc.

1
2
3
4
5
6
7
8
9
10
11
12
13
14
15
16
17
18
19
20
21
22
23
24
25
26
27
28
29
30
31
32
33
34
35
36
37
38
39
40
41
42
43
44
45
46
47
48
49
50
51
52
53
54
55
56
57
58
59
60
61
62
63
64
65
66
67
68
69
70
71
72
73
74
75
76
77
78
79
80
81
82
83
84
85
86
87
88
89
90
91
92
93
94
95
96
97
98
99
100

1
2
3
4
5
6
7
8
9
10
11
12
13
14
15
16
17
18
19
20
21
22
23
24
25
26
27
28
29
30
31
32
33
34
35
36
37
38
39
40
41
42
43
44
45
46
47
48
49
50
51
52
53
54
55
56
57
58
59
60
61
62
63
64
65
66
67
68
69
70
71
72
73
74
75
76
77
78
79
80
81
82
83
84
85
86
87
88
89
90
91
92
93
94
95
96
97
98
99
100