



## Electronic Service Manuals

This electronic document is provided as a service to our customers. We do not create the contents of the information contained in this document. Should you have detailed questions pertaining to the information contained in this document, you may contact Michco, or the manufacturer which provided the original information in this electronic deliverable. Michco's only part in this electronic deliverable was the electronic assembly process. By providing this manual on line we are not guaranteeing parts availability.

You may contact Michco through the following methods:

Phone (517) 484-9312 or (800) 331-3339

2011 N. High St. -- Lansing, Michigan -- 48906

Fax: (517) 484-9836

Email: [CustServe@Michco.com](mailto:CustServe@Michco.com)

Web site: [www.Michco.Com](http://www.Michco.Com)

Parts Web site: [www.FloorMachineParts.Com](http://www.FloorMachineParts.Com)

Order Parts on Line at:

**[www.FloorMachineParts.Com](http://www.FloorMachineParts.Com)**

Directly to Parts & Service:

By Email: **[Shop@Michco.com](mailto:Shop@Michco.com)**

By Fax: (517) 702-2041

By Voice: Use numbers above.

**Serving the Cleaning Industry Since 1922**

Notice: All copyrighted material remains property of original owners, all trademarks are property of respective owners. Manuals are subject to Manufacturer's reproduction limitations. Originals or reproductions were provided by manufacturers through a request. We make no warranty as to the correctness of information provided in this document and you assume all risk. By placing these manuals on line we are not declaring our corporation to be an manufacturer authorized dealer or provider, please check our web site for authorized manufacturers we represent.

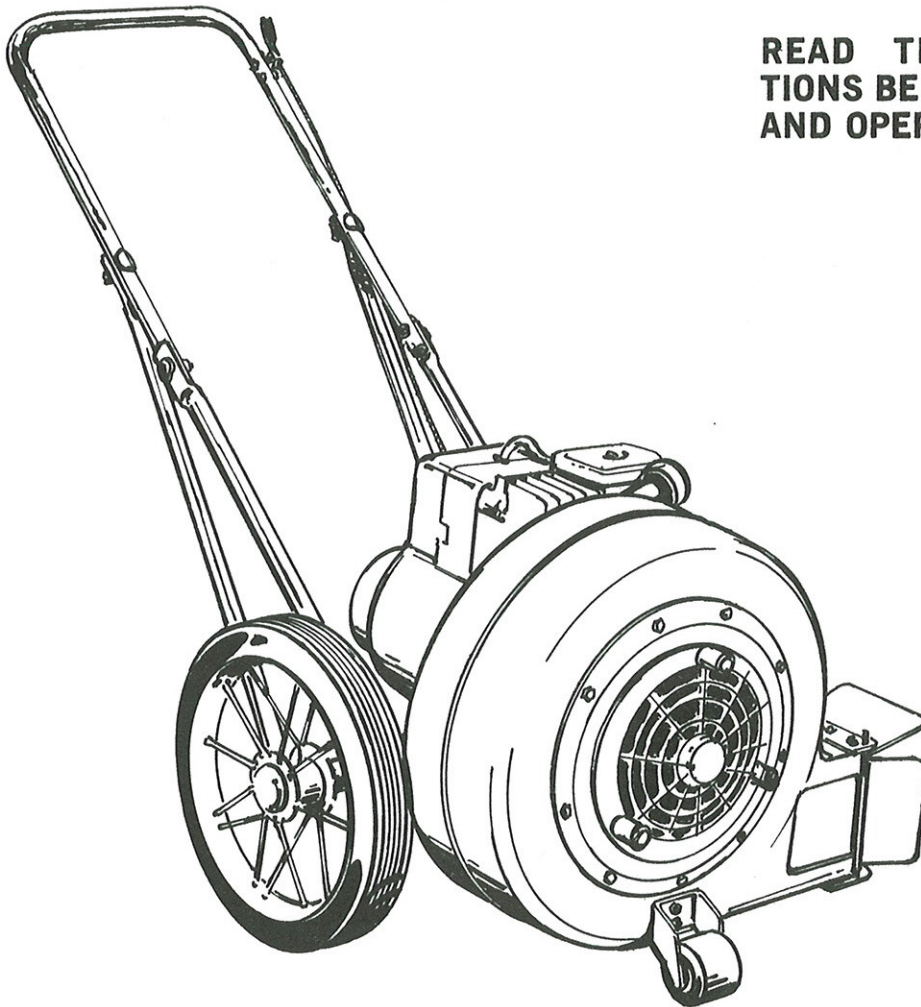
# OWNERS GUIDE



## HURRICANE "5"

MODEL CB-7850

**READ THESE INSTRUCTIONS BEFORE SETTING UP AND OPERATING MACHINE.**



**PARKER SWEEPER COMPANY**    **Box 1728**    **Springfield, Ohio 45501**  
Plate No. 398    Part No. 78-12

# ASSEMBLY & OPERATING INSTRUCTIONS

## MODEL CB-7850

Your Hurricane Blower, Model CB-7850, is shipped complete in one carton. Remove the contents. Inside the carton you should find the unit assembly and the following loose parts.

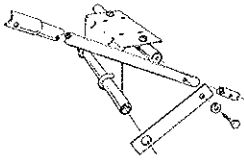
1 - 77-134	Upper Handle	2 - SA-357-C	Wheel Assembly
2 - 77-131	Lower Handle	1 - 77-128	Axle
1 - 77-132	Truss Brace, R.H.	1 - SA-698	Plastic Bag of Hardware
1 - 77-133	Truss Brace, L.H.		

The plastic bag should contain the following parts.

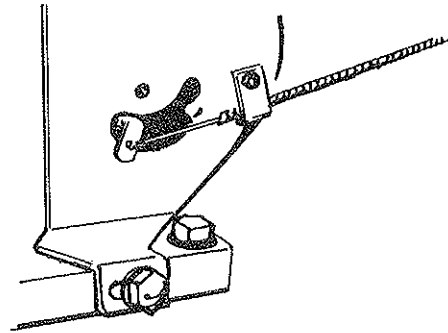
2 - 517-10-16	10-24x1 Oval Hd. Screw	1 - 935-816	1/2" Spring Lock Washer
2 - 365-10	10-24 Hexagon Lock Nut	2 - 945-816	1/2" Flat Washer
1 - 365-8	8-32 Hexagon Lock Nut	2 - 73-33	Wheel Bushing
1 - 515-8-8	8-32x1/2 Rd. Head Screw	2 - 75-30	Handle Insert
1 - 68-101	Cable Clamp	2 - 935-516	5/16 Spring Lock Washer
4 - 69-416-20	1/4-20x1 1/4 Contour Head Bolt	2 - 65-516-24	5/16-18x1 1/2 Hexagon Head Bolt
4 - 935-416	1/4" Spring Lockwasher	2 - 77-129	Engine Base Brace
4 - 335-416	1/4-20 Hexagon Nut	1 - 78-08	Spring
1 - 73-36	Throttle Control Assy.	1 - 73-416-20	1/4-20x1 1/4 Step Bolt
1 - 325-816	1/2-20 Hexagon Nut	1 - 364-416	1/4-20 Locknut
		2 - 945-416	1/4" Flat Washer

You will need a screw driver, a 3/8" wrench, a 7/16" wrench, a 1/2" wrench and a 3/4" wrench to assemble this machine. Do not discard any of the carton or inserts until after the machine is completely assembled. The right or left side of the machine is determined from the operator's position at the rear of the machine.

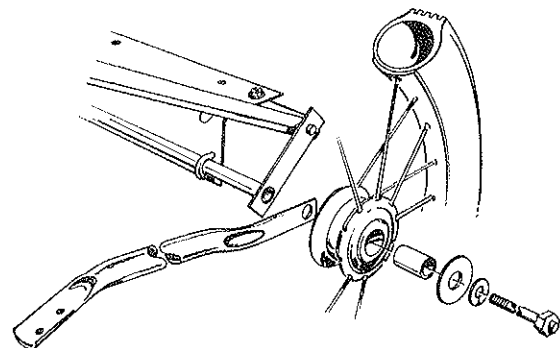
The first thing to assemble, is to attach the throttle control assembly to the engine. So, remove the throttle control assembly from the plastic bag and uncoil it so that it is straight. Now raise the control lever as high as it will go until it hits the mounting bracket. This will push the wire out of the cable at the other end. Now insert the offset in the end of the throttle wire in the hole in the throttle lever under the fuel tank at the left side of the engine. Loosen but do not remove the clamp screw and slip the throttle wire and cable under the clamp. Push the cable and wire forward through the clamp as far as it will go and then tighten the clamp to hold the cable in this position.



The next operation is to install the wheels on the machine. To do this, take the axle and nut assembly from the loose parts and install a flat washer, wheel bushing, wheel and one of the truss braces on the axle in that order. Be sure that the concave end of the truss brace is facing upward, to nest against the handle and that the flat side is next to the wheel to provide clearance for the tire. Now insert this axle assembly through the tube on the engine mount below and behind the engine. Be sure that the axle is first inserted through the hole in the engine base brace and that the axle also passes through the hole in the brace on the opposite side. Now on the axle, install the other truss brace also with the concave end facing upward, then a wheel bushing, the wheel, a flat washer, a lock washer and a nut. Make these nuts also "finger tight". Do not tighten them with a wrench yet.



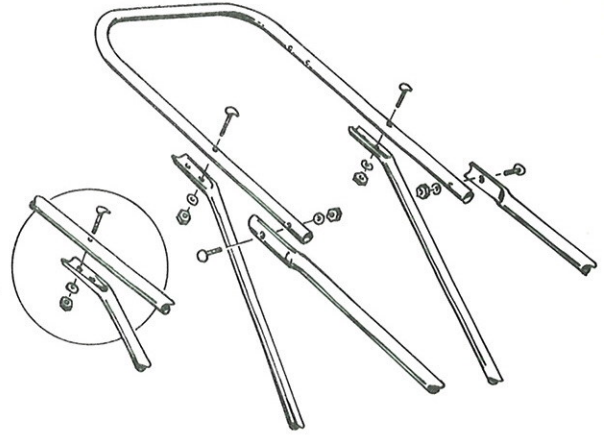
Next, install one of the handle inserts in the end of the lower handle and using a 5/16 x 1 1/2" bolt and lockwasher, attach the lower handle to the tube under the engine. Insert the bolt through the 5/16" lockwasher, then through the smaller hole in the engine brace, then through the handle and handle insert, and screw it into the tapped hole in the end of the tube. Be sure the concave section in the upper end of the handle is facing inward toward the machine. Now install the other lower handle on the opposite side of the engine base in the same sequence that you installed the first one. Do not tighten the bolts with a wrench at this time. Make them "finger tight".



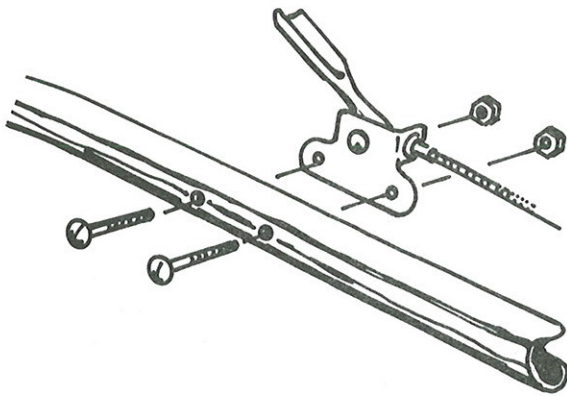
# ASSEMBLY & OPERATING INSTRUCTIONS

CB-7850

Attach the upper handle to the lower handle using two of the  $\frac{1}{4}$ -20 contour head bolts, lockwashers and nuts. Notice that the upper handle is not symmetrical. One side of the handle has four holes while the other side has two holes. The side with the four holes should be on the left to accommodate the throttle control lever. Now raise the handle and attach one of the truss braces to each side of the handle using the remaining  $\frac{1}{4}$ -20 contour head bolts, lockwashers and nuts. Notice that there are two holes in the end of the truss brace. These are used to adjust the handle height. Putting the bolt in the hole closer to the end of the brace will raise the handle. Putting the bolt in the hole farther from the end will lower the handle. Now is the time to tighten all the nuts and bolts you used to assemble the handles and wheels to the machine.

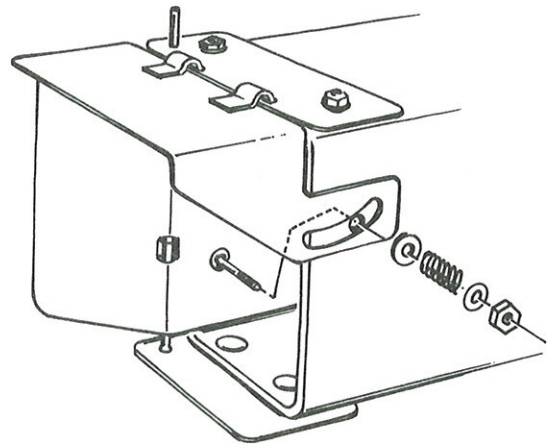


## OPERATING INSTRUCTIONS



The next item to assemble is the throttle control lever to the handle. Insert the two #10-24 x 1" screws from the inside toward the outside of the handle and install the throttle control bracket over the screws. Then secure with the two #10 self locking nuts. Now clamp the throttle control cable to the truss brace at a point 5 or 6" below the joint using the cable clamp and remaining #8 screw and lock nut.

The last item to assemble is the exhaust deflector. To do this, insert the step bolt from the inside of the exhaust opening through the slot in the side of the deflector. Now install the flat washer over the bolt, then the spring, the washer and the nut. The tension on the spring can be adjusted by screwing the nut in or out on the bolt.



## FOR SAFE OPERATION

**TO PREVENT ACCIDENTAL STARTING** always remove the spark plug before working on the engine or equipment driven by the engine.

**DO NOT RUN THE ENGINE IN AN ENCLOSED AREA.** Exhaust gases contain carbon monoxide, an odorless and deadly poison.

**DO NOT FILL GASOLINE TANK WHILE ENGINE IS RUNNING.** Spilling gasoline on a hot engine may cause a fire or explosion.

**DO NOT** leave machine unattended while running.

**DO NOT** allow machine to blow in direction of people or objects that could deflect blown materials.

**AVOID** operating machine in dangerous places where steep slopes or loose debris will endanger the safety operator or other people.

**WHEN USING BAGGING ATTACHMENT** caution must be taken to prevent picking up Tin Cans, Glass and Blocks of Wood. It was not intended for this type of service, since tremendous stresses are set up as these pieces pass thru the impeller.

## OPERATING INSTRUCTIONS

Now that your "Hurricane 5" is completely assembled, it is ready to start the engine. But before you do start the engine, read the engine operators manual and add the proper amount and grade of gasoline and oil. If you plan to operate this machine in any grassy or brushy area where there is any possibility of FIRE HAZARD you MUST equip the engine with a SPARK ARRESTER. IN THE STATE OF CALIFORNIA, IT IS MANDATORY THAT YOU INSTALL A SPARK ARRESTER. Spark arresters are available from your dealer and he will install it on the muffler for you.

TO START THE ENGINE first depress the handle on the throttle control lever on the left hand handle about halfway, then close the choke by pulling out on the choke plunger under the air cleaner. With a firm grip on the starter rope knob, pull the starter rope and the engine should start. When the engine starts, push in on the choke plunger or the engine will die.

It is best to operate the engine at about  $\frac{1}{2}$  throttle for the first hour or so in order to properly seat the moving parts.

TO STOP THE ENGINE, raise the throttle control lever to its highest position. This will activate a grounding switch and stop the engine.

For blowing leaves, debris, water or snow, it is best to run the blower at full throttle and to blow the material down wind. Blowing leaves, snow and other light objects into the wind is self defeating and all you will do is to stir up the material for it will settle back where it was. To clean a large area, start at the outer perimeter and blow the material toward the center. Since the Hurricane blows equally as well whether pushed or pulled you can use it in either direction. However, in many instances it is easier to pull the machine than to push it. If the area to be cleaned is very large or the debris is very dense, it may be best to split the area into small plots and

blow the material into several smaller piles rather than into one large one. As the area to be cleaned becomes smaller and the pile of debris becomes larger it is well to reduce the engine speed to prevent blowing the collected debris over the pile and into the area that has already been cleaned. Notice that the blower exhaust opening at the left side of the machine is equipped with two deflectors. The one inside the opening will deflect the exhaust air either to the side or to the front. The deflector on the outside and top of the opening, will deflect the air downward toward the surface to be cleaned or straight out away from the blower.

### MAINTENANCE HINTS

Your Hurricane has been designed to operate with a minimum of care and maintenance. However, it is best from time to time to check to make sure that all the nuts and bolts are tight. The only LUBRICATION necessary is a drop or two of light oil on the throttle

control wire, where it enters the cable and between the throttle control lever and the bracket. The wheel bearings are pre-packed with lubricant. The level of the oil in the engine crankcase should be checked every time that you fill the fuel tank.

### ALWAYS GIVE THE FOLLOWING INFORMATION WHEN ORDERING REPAIR PARTS:

1. PART NUMBER (Not Ref. No.)
2. QUANTITY NEEDED
3. DESCRIPTION OF PART
4. STOCK No. CB-7850

If unable to obtain parts locally, write down above information and sent to:

**PARKER SWEEPER CO., BOX 1728, SPRINGFIELD, OHIO 45501**

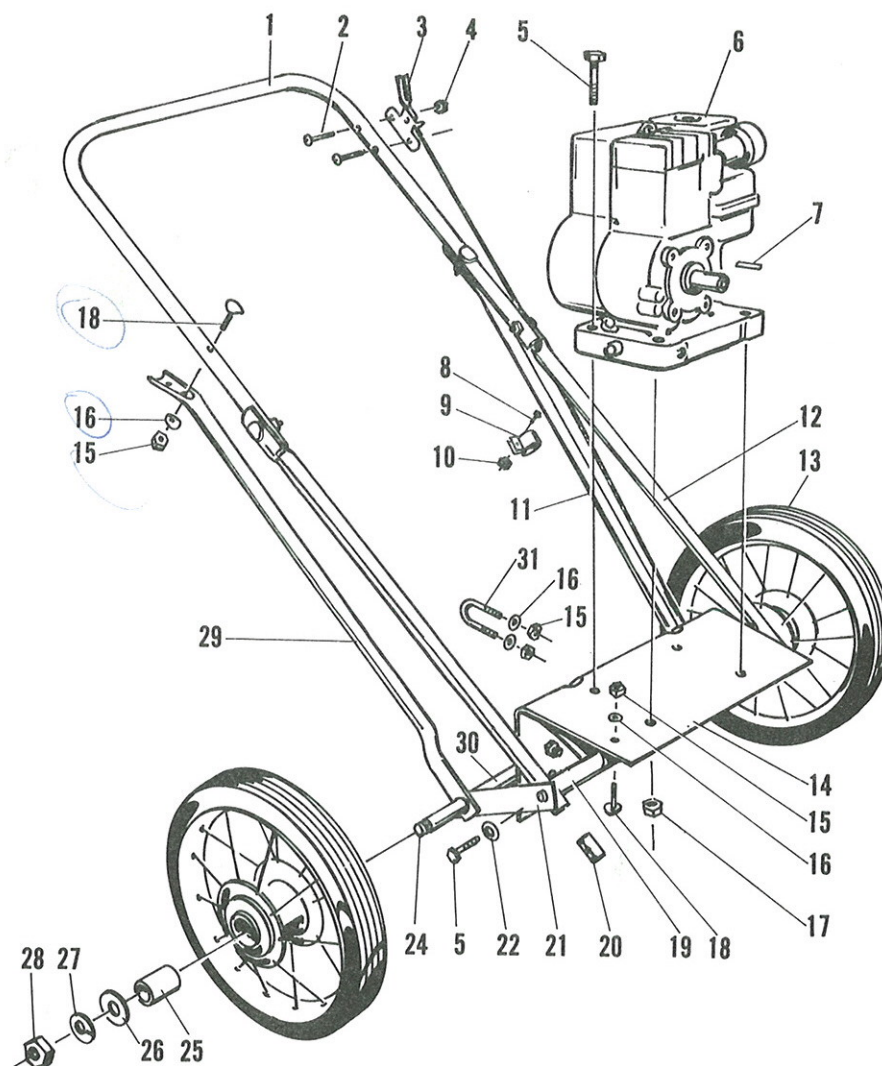
Your unit is right hand (R.H.) or left hand (L.H.) as you stand behind it.

## HANDLE AND FRAME ASSEMBLY

REPAIR PARTS

CB-7850

MODEL NO. CB-7850



## PARTS LIST

REF. NO.	PART NO.	QTY. PER UNIT	Description of Part	REF. NO.	PART NO.	QTY. PER UNIT	Description of Part
1	77-134	1	Upper Handle	16	935-416	10	Lockwasher ¼ Spring
2	517-10-16	2	Screw #10-24 x 1	17	365-516	4	Nut 5/16-18 Hex Lock
3	73-36	1	Throttle Control Assy.	18	69-416-20	6	Bolt ¼-20 x 1¼ Contour
4	365-10	2	Nut #10-24 Hex Lock	19	SA-695	1	Handle Support Assy.
5	65-516-24	6	Bolt 5/16-18 x 1½ Hex	20	75-30	2	Handle Insert
6	73-15	1	Engine	21	77-129	2	Engine Base Brace
7	61-65	1	Engine Key	22	935-516	2	Lockwasher 5/16
8	515-8-8	1	Screw #8-32 x ½	24	77-128	1	Axle
9	68-101	1	Cable Clamp	25	73-33	2	Wheel Bushing
10	365-8	1	Nut #8-32 Hex Lock	26	945-816	2	Washer ½ Flat
11	77-133	1	Truss Brace LH	27	935-816	2	Lock Washer ½
12	77-131	2	Lower Handle	28	325-816	2	Nut ½-20 Hex
13	SA-357	2	Wheel Assembly	29	77-132	1	Truss Brace RH
14	77-130	1	Engine Base	30	77-127	1	Axle Support
15	335-416	10	Nut ¼-20 Hex	31	76-177	2	U Bolt

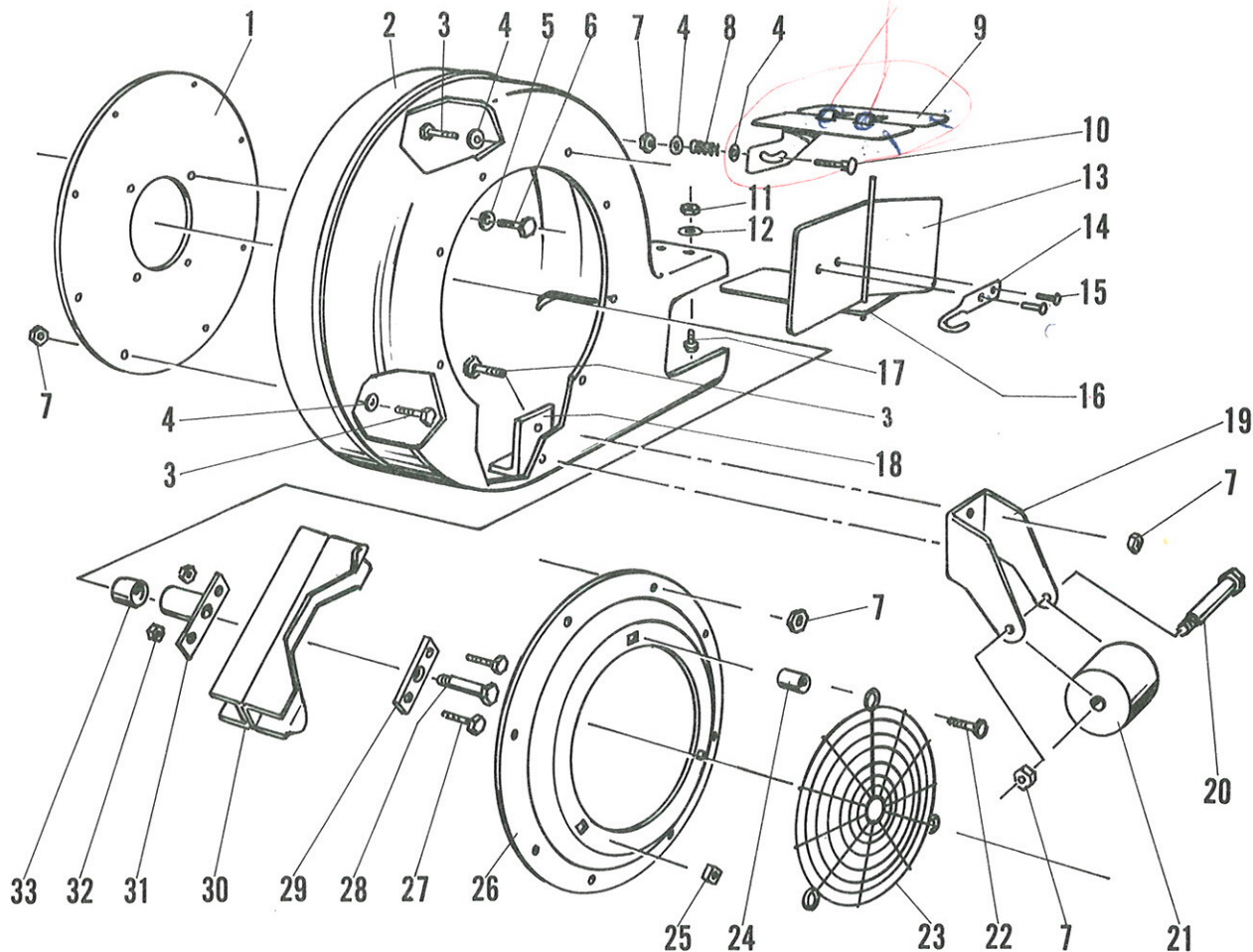
PARKER SWEEPER COMPANY Box 1728 Springfield, Ohio 45501

## HOUSING UNIT ASSEMBLY

REPAIR PARTS

CB-7850

MODEL NO. CB-7850



## PARTS LIST

Ref. No.	Part No.	Qty. Per Unit	Description of Part	Ref. No.	Part No.	Qty. Per Unit	Description of Part
1	61-02	1	Back Plate	18	78-14	1	Nut Plate
2	78-09	1	Blower Housing	19	76-136	1	Roller Bracket
3	65-416-12	18	Bolt 1/4-20 x 3/4 Hex. Hd.	20	76-202	1	Roller Axle
4	945-416	18	Flat Washer 1/4"	21	76-58	1	Roller
5	935-516	4	Lockwasher 5/16 Spring	22	65-416-20	3	Bolt 1/4-20 x 1 1/4 Hex. Hd.
6	60-516-10	4	Bolt 5/16-24 x 5/8 Hex. Hd.	23	73-95	1	Fan Guard
7	364-416	20	Nut 1/4-20 Hexagon Lock	24	73-414	3	Spacer
8	78-08	1	Compression Spring	25	73-18	3	Nut Retainer
9	78-68	1	Deflector Weldment	26	73-17	1	Front Cover
10	73-416-20	1	Step Bolt 1/4-20 x 1 1/4	27	65-516-16	2	Bolt 5/16 - 18 x 1 Hex. Hd.
11	335-416	4	Nut 1/4-20 Hexagon	28	60-516-32	1	Bolt 5/16 - 24 x 2 Hex. Hd.
12	935-416	4	Lockwasher 1/4 Spring	29	63-305	1	Anchor Plate
13	78-03	1	Deflector Van Weldment	30	SA-701	1	Fan Assembly
14	78-10	1	Deflector Latch	31	78-02	1	Fan Adaptor
15	534-7-4	2	Sheet Metal Screw	32	364-516	2	Nut 5/16 - 18 Hex Lock
16	78-06	2	Pivot Plate	33	78-05	1	Fan Spacer
17	73-416-10	4	Step Bolt 1/4-20 x 5/8				

PARKER SWEEPER COMPANY Box 1728 Springfield, Ohio 45501

Order all parts from your nearest PARKER PARTS DISTRIBUTORS. If unable to locate the part from your Parts Distributor forward your order to PARKER SWEEPER COMPANY for handling.

PARKER SWEEPER COMPANY  
Post Office Box 1728  
Springfield, Ohio 45501  
Phone: 513-323-4901

Hart-Greer, Inc. 106 Distribution Dr. BIRMINGHAM, ALABAMA 35209	Ideal Mower Sales Inc. 811 Woodward Heights FERNDALE, MICH. 48910	Baltz & Son Co. 9817 East Burnside PORTLAND, OREGON 97216	R. L. Ryerson Company 5278 N. Port Washington Rd. MILWAUKEE, WISCONSIN 53217
Lawn & Garden Supply Co. 2222 N. 27th Ave. PHOENIX, ARIZONA 85701	Lorenz Service Company 2500 So. Pennsylvania Ave. LANSING, MICHIGAN 48910	Polson Company 208 S. E. Hawthorne Blvd. PORTLAND, ORE. 97214	Farm & Tiller Sales, Lyd. 1205 E. Hastings Street VANCOUVER, B.C., CANADA
Lawn & Garden Supply Co. 5455 So. Nogales Highway TUCSON, ARIZONA 85706	Ball Sales & Service Co. G-6200 N. Saginaw MT. MORRIS, MICHIGAN 48458	Lawn & Golf Supply Co. 647 Nutt Rd. PHOENIXVILLE, PA. 19460	Robertson Seeds, Ltd. 8118 - 103 Street EDMONTON, ALBERTA, CANADA
H.V. Carter Company 1700 East 14th St. OAKLAND, CALIFORNIA 94607	R. L. Gould Company 3711 N. Lexington Ave. ST. PAUL, MINN. 55112	Bluemont Co. 11125 Frankstown Road PITTSBURGH, PA. 15235	Morin Equipment Inc. 98 Industrial Park Road LONGUEUIL, QUEBEC, CANADA
Tarzana Mower & Engine Parts 6075 Reseda Blvd. RESEDA, CALIFORNIA 91335	Gunthers Service & Supply 7320 Wornall Rd. KANSAS CITY, MISSOURI 64114	Niemeyer Corp. 1135 Phoexisville Pike, Box 531 WEST CHESTER, PA. 19380	Morin Equipment, Inc. 2075 Branley STE-FOY, QUEBEC, CANADA
South Denver Lawn Eqpt. 527 West Evans DENVER, COLORADO 80223	Henzler, Inc. 2015 Lemay Ferry Rd. ST. LOUIS, MISSOURI 63125	Colonial Motor Co. 3219 Holmes St. DALLAS, TEXAS 77036	Duke Lawn Equipment 1184 Plains Road, East BURLINGTON, ONTARIO, CANADA
Zaun Equipment Inc. 1741 Hamilton St. JACKSONVILLE, FLA. 32210	Port Huron Machinery & Supply Co. P. O. Box 81708 LINCOLN, NEBRASKA 68508	Goldthwaite's of Dallas Inc. 2700 Forest Lane DALLAS, TEXAS 75234	
Florida Turf & Garden 7275 N. W. 64th St. MIAMI, FLA. 33166	McKee City Distributors Inc. 406 English Creek Ave. McKEE CITY, NEW JERSEY 08232	Goldthwaite's of Houston Inc. 5703 Chimney Rock Rd.-Box 343 HOUSTON, TEXAS 77001	
Zaun Equipment Inc. 323 Gore St., West ORLANDO, FLA. 32806	George Smith & Sons Inc. 322 Broadway BETHPAGE, L.I., NEW YORK 11714	Watson Distributing Co. 6335 Southwest Freeway HOUSTON, TEXAS 75215	
Zaun Equipment Inc. 3032 44th Avenue, North ST. PETERSBURG, FLA. 33714	Grasslands Eqpt. & Irrigation 892 Troy Schenectady Rd. LATHAM, NEW YORK 12110	Goldthwaite's of Texas Inc. 10751 Sentinel SAN ANTONIO, TEXAS 78217	
Wislar & Company Inc. 4505 Mills Place, S.W. ATLANTA, GA. 30336	Henry W. O'Neil & Associates Inc. 410 No. Goodman St. ROCHESTER, N.Y. 14609	Watson Distributing Co. P. O. Box 17185 SAN ANTONIO, TEXAS 78217	
Geo. A. Davis 5440 Northwest Highway CHICAGO, ILL. 60630	E. J. Smith & Sons 4000 Golf Acres Dr. CHARLOTTE, N. C. 28201	A-1 Eng. & Mower Company 437 East 9th Street SALT LAKE CITY, UTAH 84111	
Plante's Lawn Eqpt. Inc. 4 Grant St. NORTH AURORA, ILL. 60542	Hayward Distributing Co. 460 Neilston St. COLUMBUS, OHIO 43215	Richmond Power Equipment Co., Inc. 1904 North Hamilton Street RICHMOND, VIRGINIA 23230	
T. E. Booher & Sons 1009 West State St. ALBANY, INDIANA 47320	Hershman's Inc. 12477 Benner Rd. RITTMAN, OHIO 44270	The Bently Company 4126 Airport Way, South SEATTLE, WASHINGTON 98108	
Louisville Cycle & Supply 400 Almond Ave. LOUISVILLE, KY. 40209	M.P.E. Sales Inc. 25850 Chardon Road CLEVELAND, OHIO 44143	Northwest Mower, Inc. 926 N. 165th Street SEATTLE, WASHINGTON 98133	
Morton B. Collins 300 Birnie Avenue SPRINGFIELD, MASS. 01170	Tri-County Sales & Service 15 North West Ave. YOUNGSTOWN, OHIO 44501	Polson Company 625 Lander Street SEATTLE, WASHINGTON 98134	
Frost Company 483 Wildwood St. WOLBURN, MASS. 01801	Wait Sales Company 406-10 S. Peoria, Box 1015 TULSA, OKLA. 74120	Polson Company East 210 Montgomery St. SPOKANE, WASHINGTON 99207	

