



Electronic Service Manuals

This electronic document is provided as a service to our customers. We do not create the contents of the information contained in this document. Should you have detailed questions pertaining to the information contained in this document, you may contact Michco, or the manufacturer which provided the original information in this electronic deliverable. Michco's only part in this electronic deliverable was the electronic assembly process. By providing this manual on line we are not guaranteeing parts availability.

You may contact Michco through the following methods:

Phone (517) 484-9312 or (800) 331-3339

2011 N. High St. -- Lansing, Michigan -- 48906

Fax: (517) 484-9836

Email: CustServe@Michco.com

Web site: www.Michco.Com

Parts Web site: www.FloorMachineParts.Com

Order Parts on Line at:

www.FloorMachineParts.Com

Directly to Parts & Service:

By Email: **Shop@Michco.com**

By Fax: (517) 702-2041

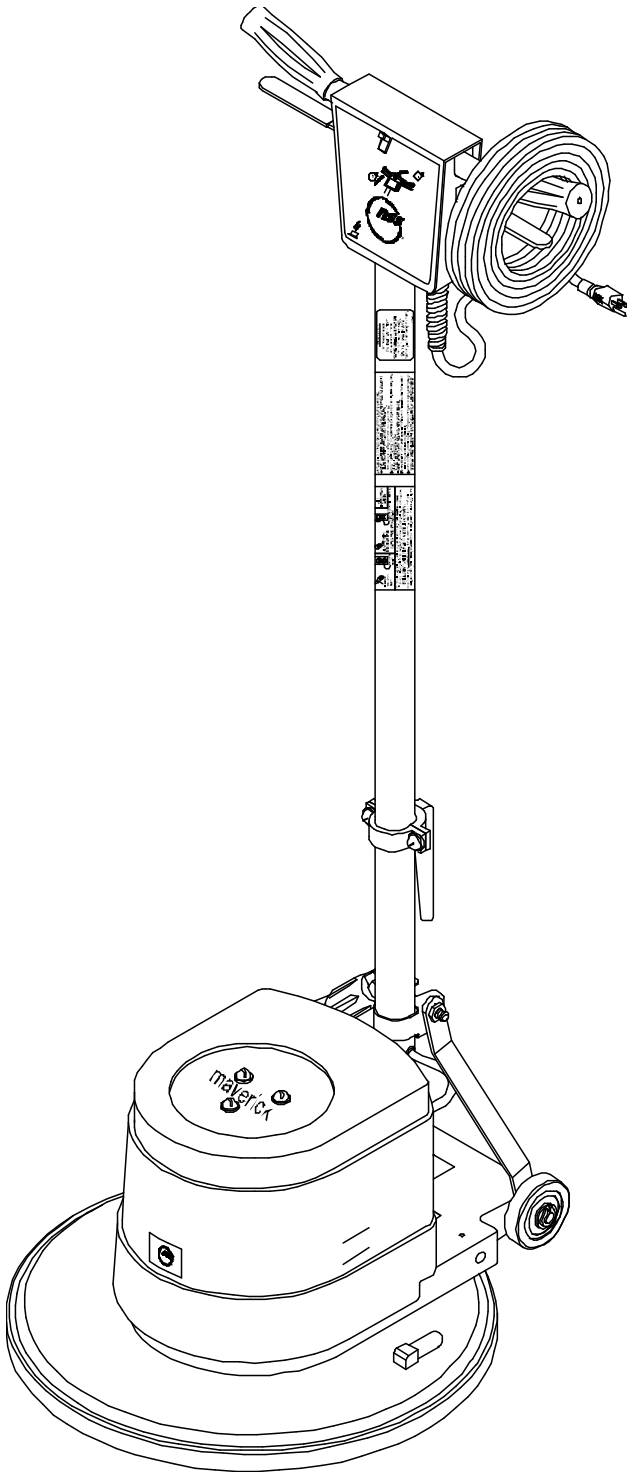
By Voice: Use numbers above.

Serving the Cleaning Industry Since 1922

Notice: All copyrighted material remains property of original owners, all trademarks are property of respective owners. Manuals are subject to Manufacturer's reproduction limitations. Originals or reproductions were provided by manufacturers through a request. We make no warranty as to the correctness of information provided in this document and you assume all risk. By placing these manuals on line we are not declaring our corporation to be an manufacturer authorized dealer or provider, please check our web site for authorized manufacturers we represent.

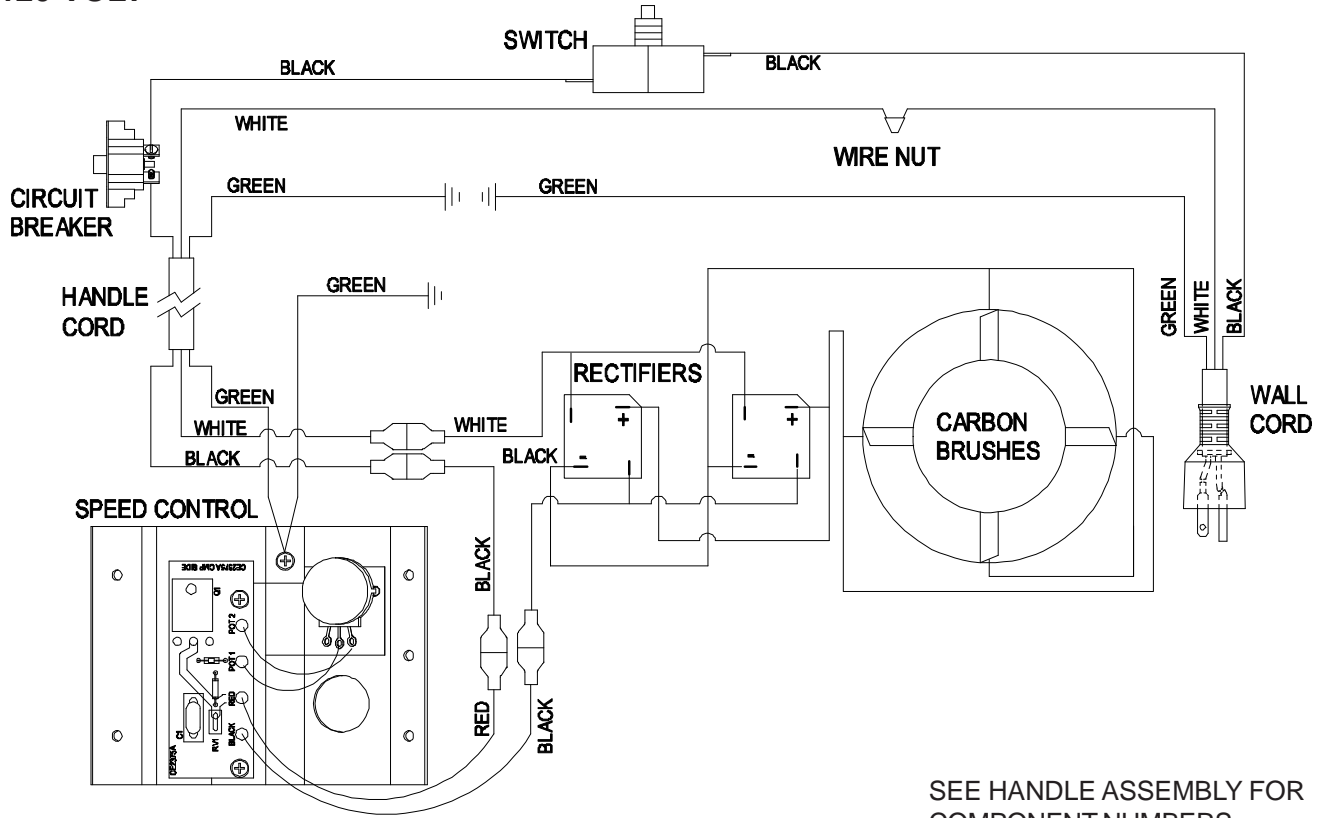
PARTS LIST

MAVERICK 300 STANDARD SPEED FLOOR MACHINE



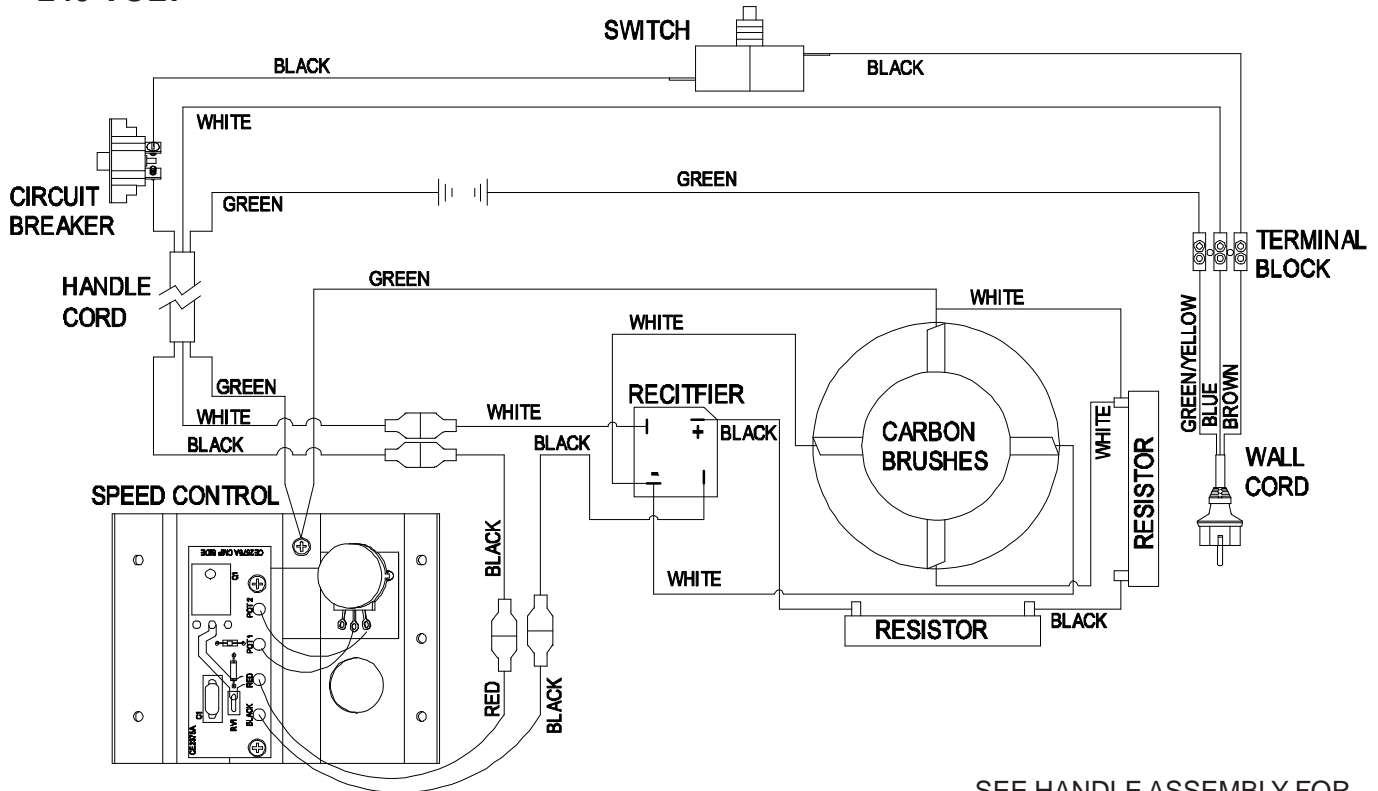
WIRE DIAGRAM - VARIABLE SPEED

120 VOLT



SEE HANDLE ASSEMBLY FOR
COMPONENT NUMBERS

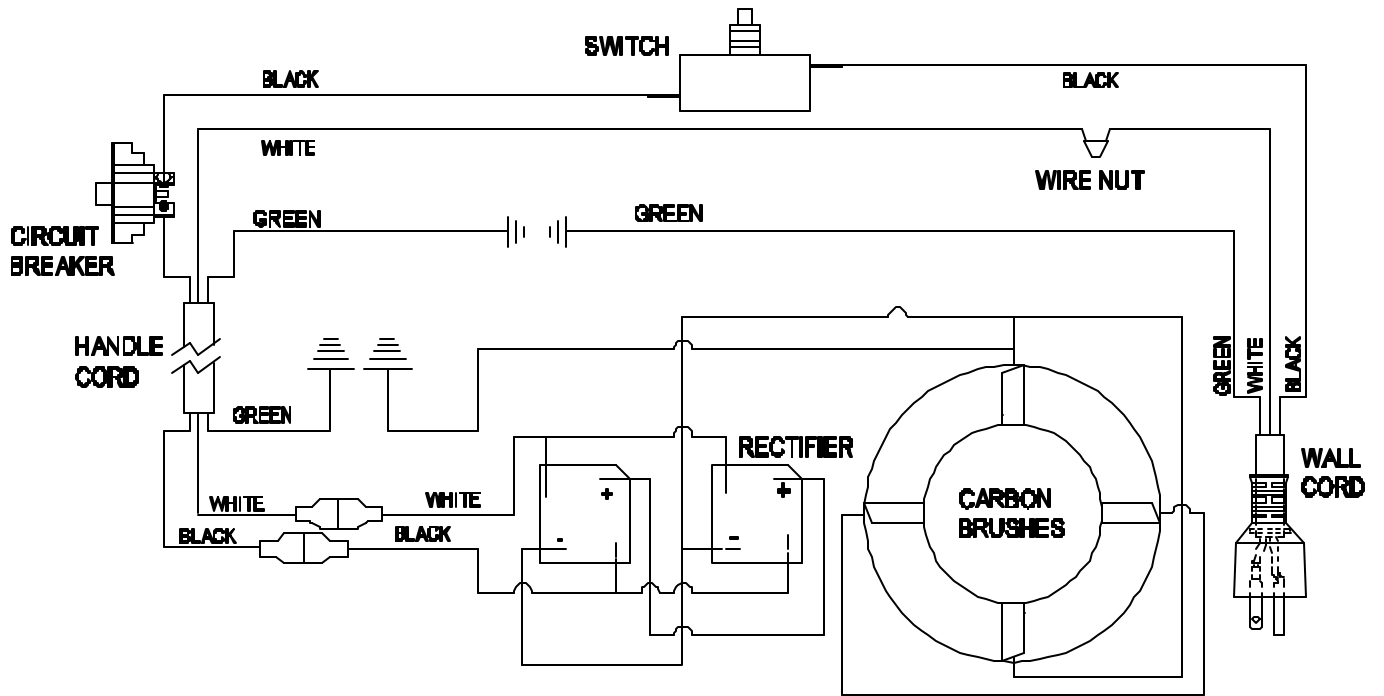
240 VOLT



SEE HANDLE ASSEMBLY FOR
COMPONENT NUMBERS

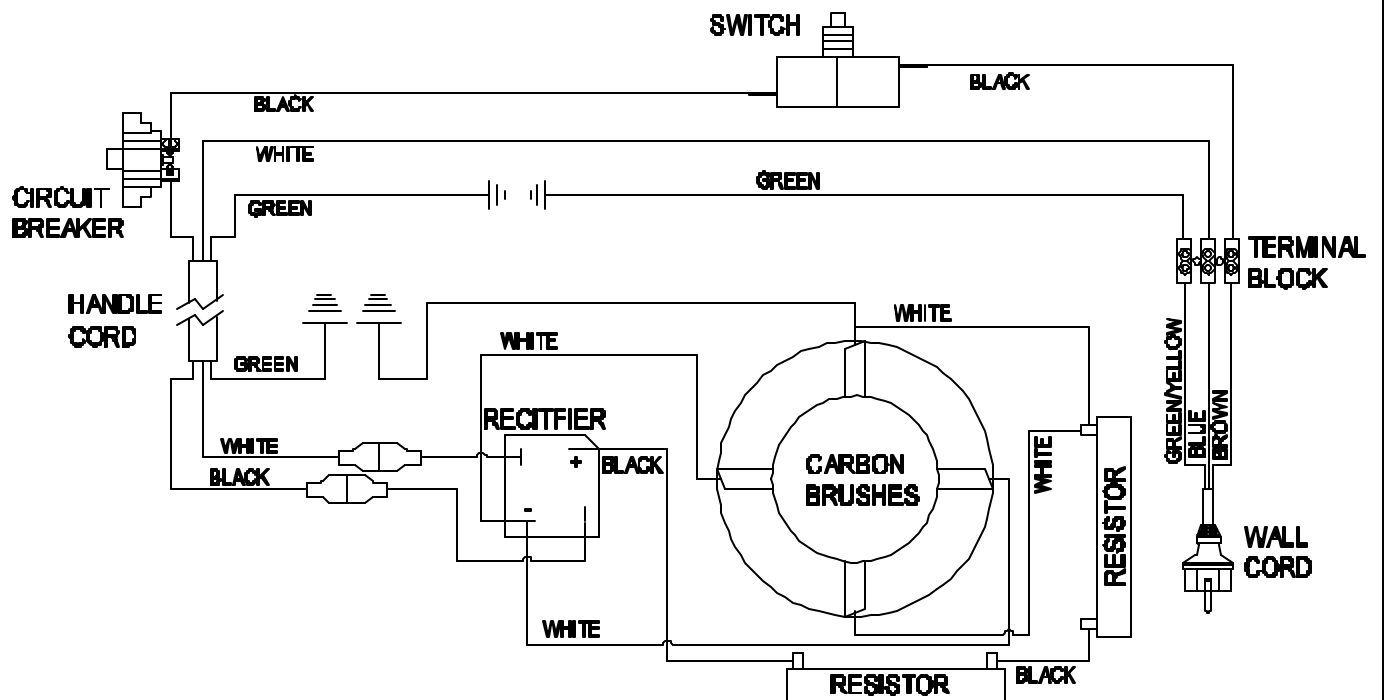
WIRE DIAGRAM - SINGLE SPEED

120 VOLT



SEE HANDLE ASSEMBLY FOR COMPONENT NUMBERS

240 VOLT

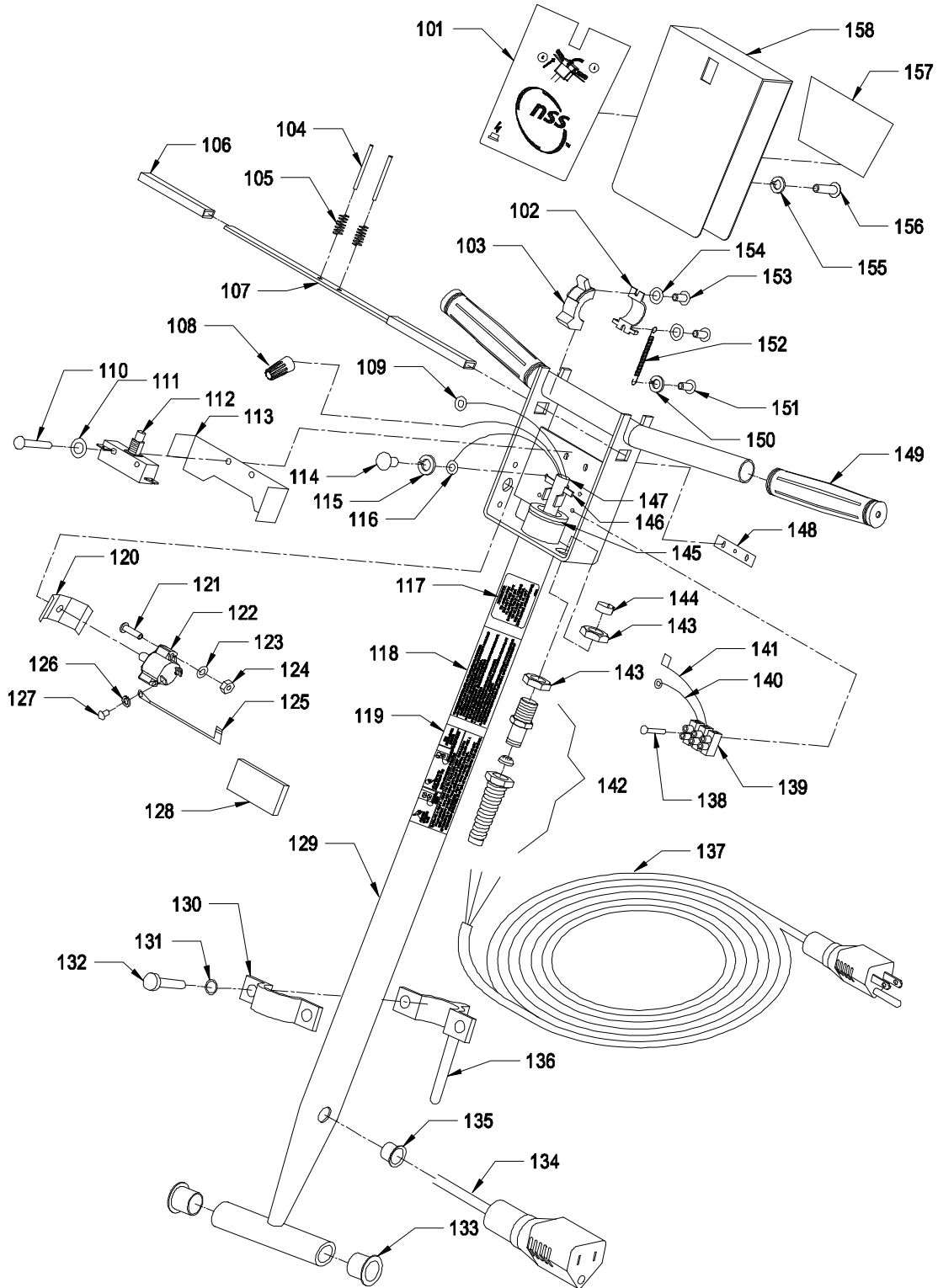


SEE HANDLE ASSEMBLY FOR COMPONENT NUMBERS

HANDLE ASSEMBLY

ITEM	PART NO.	PART DESCRIPTION	QTY.
	5490189	HANDLE ASSEMBLY - 120 VOLT	1
	5490679	HANDLE ASSEMBLY - 240 VOLT	1
101	5392421	DECAL - "SWITCH BOX - CIRCUIT BREAKER ICON"	1
102	0393511	LOCKOUT BRACKET	1
103	0393521	LOCK OUT	1
104	9120828	1/8 X 1 3/4 ROLL PIN	2
105	5390171	SWITCH LEVER SPRING	2
106	0393411	GRIP - SWITCH LEVER	2
107	0393401	SWITCH LEVER	1
108	5391321	WIRE NUT - ORANGE	1
109	0294031	# 8 RING TERMINAL - 120 VOLT ONLY	1
	5092331	FLAG TERMINAL - CRIMP ON - 240 VOLT ONLY	1
110	9120100	6-32 X 1 ROUND HEAD PHILLIPS MACHINE SCREW	2
111	9120130	6 EXTERNAL STAR LOCK WASHER	2
112	5390211	SWITCH	1
113	5390361	SWITCH INSULATOR	1
114	9120380	10-24 X 3/8 ROUND HEAD PHILLIPS MACHINE SCREW	1
115	9120320	10 SPLIT LOCK WASHER	1
116	0298981	# 10 RING TERMINAL 14-16 GAGE	1
117	5392401	DECAL - "WARNING - FIRE"	1
118	0190901	DECAL - "WARNING" - 120 VOLT ONLY	1
	0190921	DECAL - "ICON ADAPTOR" LABEL - 240 VOLT ONLY	1
119	0190911	DECAL - "GROUNDING" LABEL - 120 VOLT ONLY	1
120	5490441	INSULATION - BREAKER LEAD	1
121	9120430	10-24 X 3/4 ROUND HEAD PHILLIPS MACHINE SCREW	2
122	5490401	20 AMP CIRCUIT BREAKER - 120 VOLT ONLY	1
	5294581	8 AMP CIRCUIT BREAKER - 240 VOLT ONLY	1
123	9120320	10 SPLIT LOCK WASHER	1
124	9120360	10-24 HEX NUT WITH STAR LOCK WASHER	2
125	5490451	CIRCUIT BREAKER LEAD - 4"	1
126	9120200	8 SPLIT LOCK WASHER	1
127	9120223	8-32 X 1/4 PAN HEAD PHILLIPS MACHINE SCREW	1
128	5390511	FOAM PAD	1
129	5391891	HANDLE	1
130	5091636	CORD HOOK CLAMP	1
131	9120880	1/4 SPLIT LOCK WASHER	2
132	9121010	1/4-20 X 3/4 TRUSS HEAD PHILLIPS MACHINE SCREW	2
133	5090441	NYLON BUSHING	2
134	5490151	HANDLE CORD	1
135	5293131	GROMMET	1
136	5091682	CORD HOOK	1
137	5293791	CORD - 75 FEET - 14-3 - 120 VOLT ONLY	1
	0299671	SHUKO CORD - 75 FEET - 16-3 - 240 VOLT ONLY	1
138	9120080	6-32 X 3/4 ROUND HEAD PHILLIPS MACHINE SCREW - 240 VOLT ONLY	1
139	5391931	TERMINAL BLOCK - 240 VOLT ONLY	1
140	5391921	WIRE - GROUND - 240 VOLT ONLY	1
141	5391911	WIRE - DEAD MAN - 240 VOLT ONLY	1
142	5091671	STRAIN RELIEF - 120 VOLT	1
	0299531	STRAIN RELIEF - 240 VOLT	1
143	5390261	STRAIN RELIEF NUT - 120 VOLT	2
	0891131	STRAIN RELIEF NUT - 240 VOLT	1
144	5092371	STRAIN RELIEF CORD CLAMP - 120 VOLT	1
	0299661	STRAIN RELIEF CORD CLAMP - 240 VOLT	1
145	5091656	7/8 I.D. X 1 3/8 O.D. X .112 THICK FLAT WASHER	1
146	5095501	CORD CLAMP	1
147	8791070	VINYL HOSE	1
148	9120025	6-32 DOUBLE HOLE SWITCH SPEED NUT	1
149	0393441	HANDLE GRIP	2
150	9120320	10 SPLIT LOCK WASHER	1

HANDLE ASSEMBLY

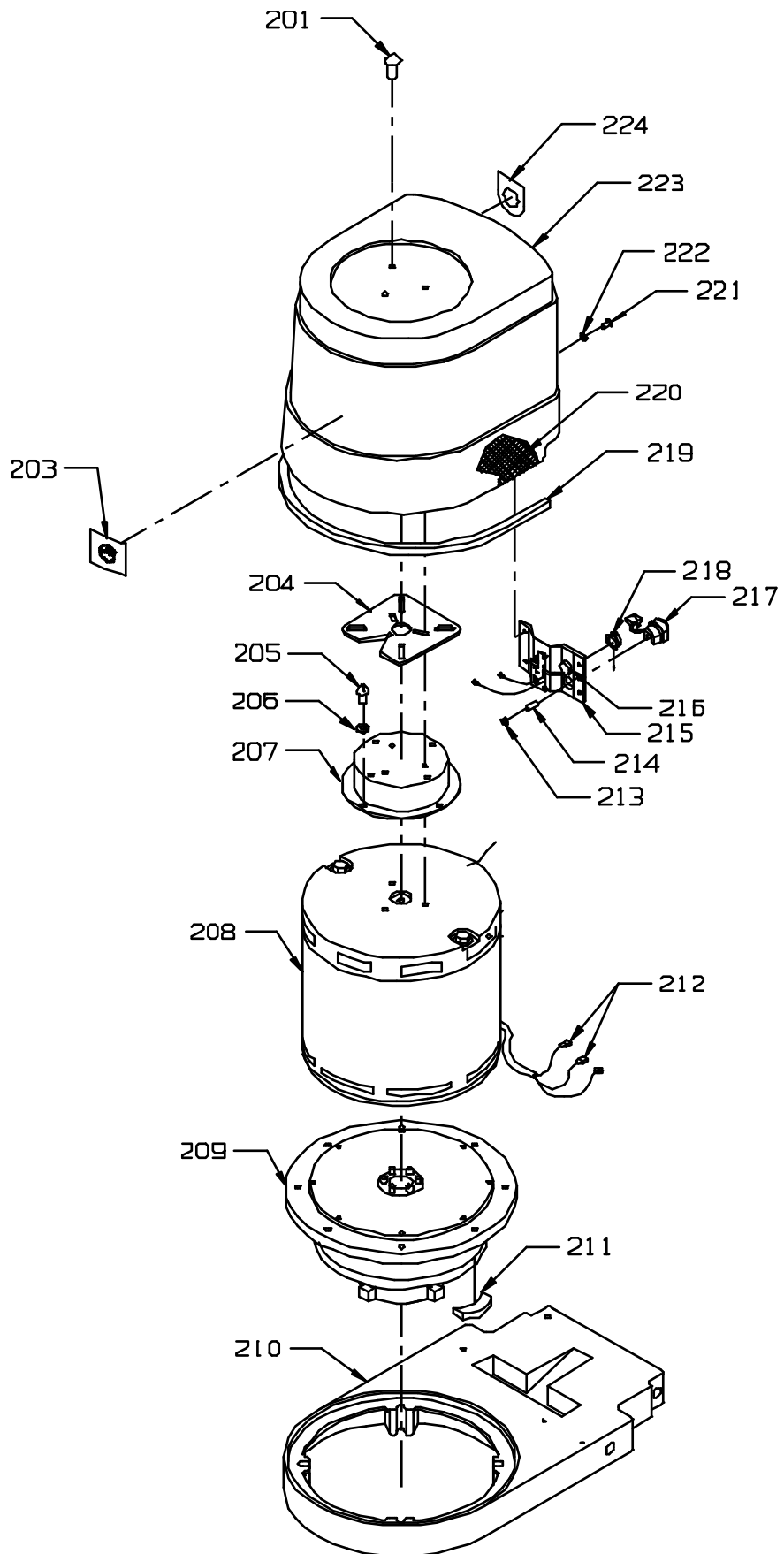


151	9120380	10-24 X 3/8 ROUND HEAD PHILLIPS MACHINE SCREW	1
152	0393381	SPRING	1
153	0393881	M3 X .05 X 8mm PAN HEAD PHILLIPS THREAD CUTTING SCREW	2
154	0393841	M3 EXTERNAL STAR LOCK WASHER	2
155	9120320	10 SPLIT LOCK WASHER	1
156	9120430	10-24 X 3/4 ROUND HEAD PHILLIPS MACHINE SCREW	1
157	5392471	DECAL - "OPERATION"	1
158	5391873	SWITCH BOX COVER	1

UPPER BASE ASSEMBLY

<u>ITEM</u>	<u>PART NO.</u>	<u>PART DESCRIPTION</u>	<u>QTY.</u>
201	9120510	10-24 X 1/2 TRUSS HEAD PHILLIPS MACHINE SCREW	3
203	0393531	NSS LOGO DECAL	1
204	5293951	CORK PAD	1
205	9120220	8-32 X 3/8 ROUND HEAD PHILLIPS MACHINE SCREW	4
206	9120180	8 INTERNAL STAR LOCK WASHER	4
207	5490113	STANDOFF	1
	5491801	MOTOR AND GEAR - 120 VOLT - 1 1/2 H.P.	1
208	5490021	MOTOR ONLY - 120 VOLT - 1 1/2 H.P.	1
209	5490031	GEAR ONLY - 3 IDLER	1
	5490719	MOTOR AND GEAR - 240 VOLT - 1 1/2 H.P.	1
208	5490701	MOTOR ONLY - 240 VOLT - 1 1/2 H.P.	1
209	5490031	GEAR ONLY - 3 IDLER	1
210	5390013	BASE	1
211	5091691	RUBBER PAD	4
212	5490161	FULLY INSULATED FEMALE TERMINAL 14-16 GAGE	2
213	9120690	10-32 HEX NUT WITH STAR LOCK WASHER	1
214	9120650	10-32 X 3/4 SET SCREW - CUP POINT	1
215	5490079	SPEED CONTROL - 120 VOLT - INCLUDES:	1
	5490061	SPEED CONTROL BRACKET	1
216	5490241	POTENTIOMETER	1
215	5490641	SPEED CONTROL - 240 VOLT - INCLUDES:	1
	5490061	SPEED CONTROL BRACKET	1
216	5490241	POTENTIOMETER	1
217	5293941	HEYCO STRAIN RELIEF	1
218	5490131	KNOB WITH SET SCREW	1
219	8891080	3/16" X 5/16" NEOPRENE GASKET	2
220	5490191	FELT - INSIDE COVER	1
221	9120740	10-32 X 3/8 TRUSS HEAD PHILLIPS MACHINE SCREW	4
222	9120495	10 INTERNAL STAR LOCK WASHER	4
223	5490041	MOTOR COVER WITH BAFFLE	1
224	5392361	DECAL KIT - "SPEED CONTROL"	1

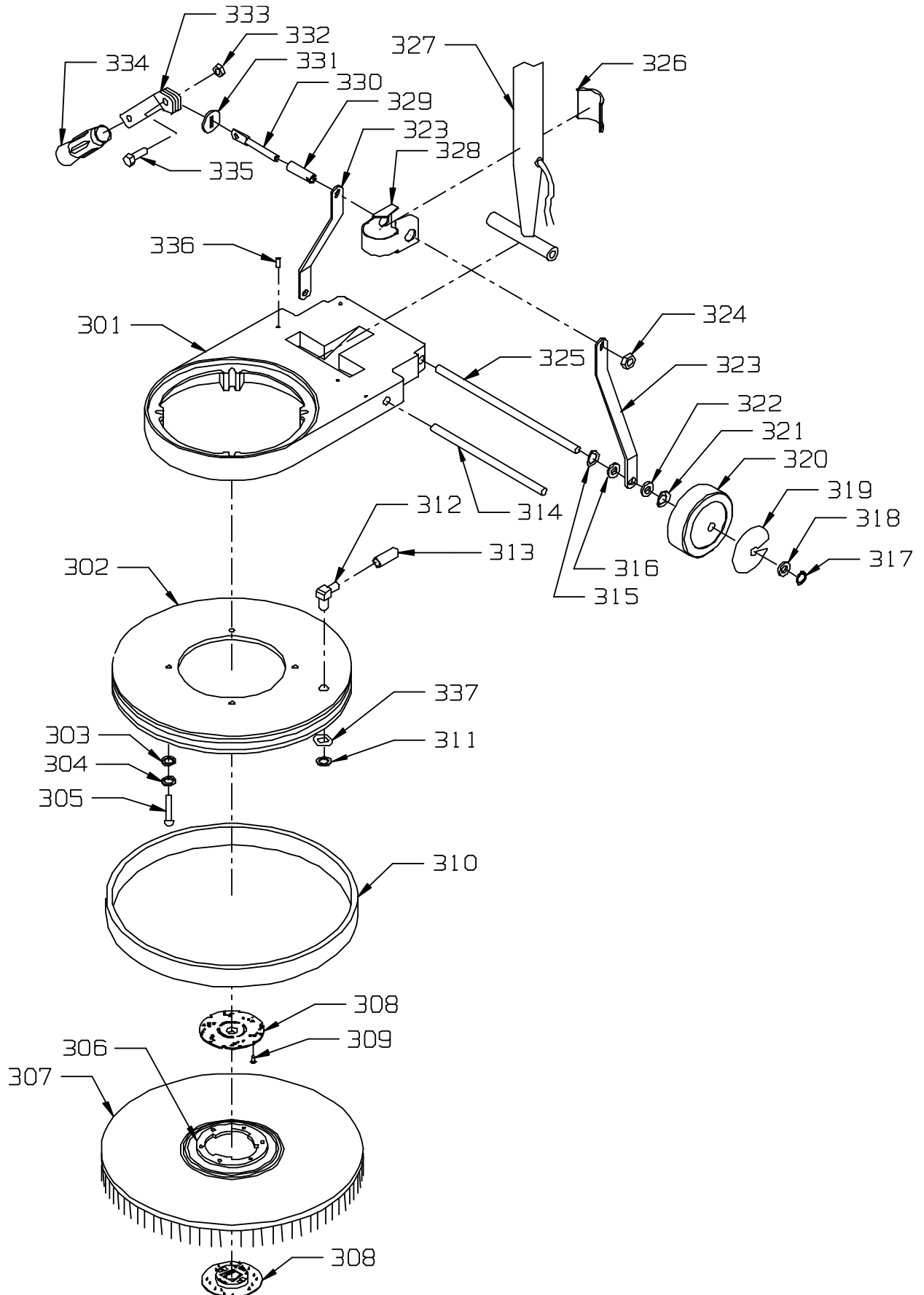
UPPER BASE ASSEMBLY



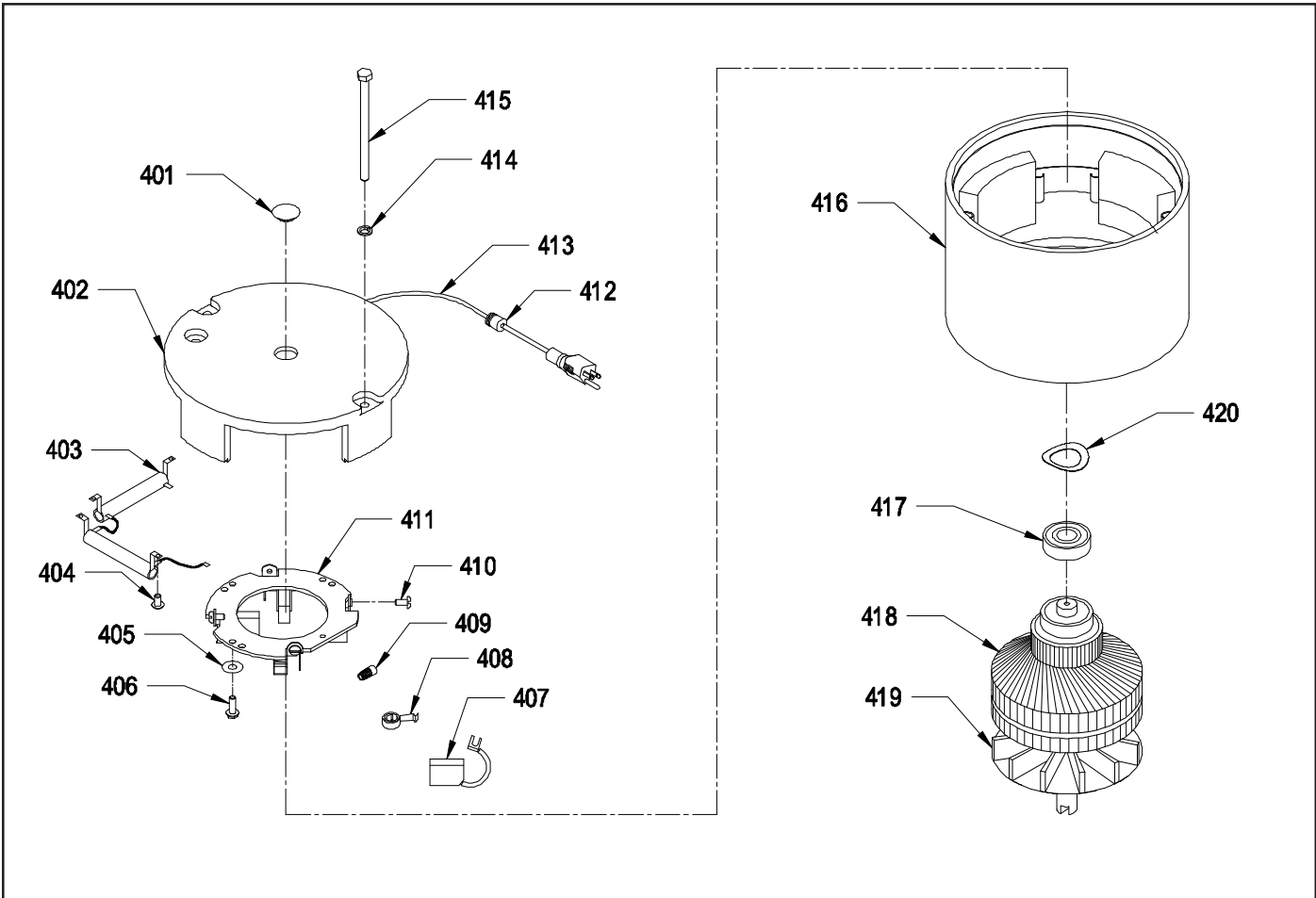
LOWER BASE ASSEMBLY

<u>ITEM</u>	<u>PART NO.</u>	<u>PART DESCRIPTION</u>	<u>QTY.</u>
301	5390013	BASE	1
302	5090045	SKIRT - 17"	1
	5090065	SKIRT - 20"	1
303	9121390	11/32 I.D. X 11/16 O.D. X .051/.080 THICK FLAT WASHER (5/16)	4
304	9121520	5/16 SPLIT LOCK WASHER	4
305	9121545	5/16-18 X 2 1/2 SOCKET HEAD CAP SCREW	4
306	2890971	PLASTIC CLUTCH PLATE - 5" DIAMETER - 6 HOLES - BLACK	1
307	2897551	17" HIGH SPEED PAD DRIVER	1
	2892551	20" HIGH SPEED PAD DRIVER	1
308	5990731	SPRING CLIP PAD HOLDER SET - INCLUDES:	1
309	9120140	#6 X 5/8 PAN HEAD PHILLIPS SHEET METAL SCREW	3
310	5090371	BUMPER - 17"	1
	5090401	BUMPER - 20"	1
311	5092641	RETAINING RING	1
312	5092630	90 DEGREE SOLUTION FEED TUBE	1
313	5092531	SOLUTION FEED TUBE CAP	1
314	5390496	HANDLE PIVOT BAR	1
315	9122705	1/2 I.D. X 3/4 O.D. X .01 THICK - 1 WAVE SPRING WASHER (1/2)	2
316	5390811	1/2 I.D. X 1 O.D. X .07 THICK FLAT WASHER - NYLATRON	2
317	9122496	RETAINING RING	2
318	9122465	.516 I.D. X .813 O.D. X .027/.030 THICK FLAT WASHER	2
319	5090491	DECAL KIT - "WHEEL COVER"	1
320	5092591	WHEEL - 5" - WITH PLASTIC BEARING	2
321	9122705	1/2 I.D. X 3/4 O.D. X .01 THICK - 1 WAVE SPRING WASHER (1/2)	2
322	5390811	1/2 I.D. X 1 O.D. X .07 THICK FLAT WASHER - NYLATRON	2
323	5390026	HANDLE BRACE	2
324	9122140	3/8-16 HEX NUT WITH NY-LOK INSERT	1
325	5390136	AXLE	1
326	5390826	TUBE CLAMP SHOE	1
327	5391891	HANDLE	1
328	5390043	TUBE CLAMP	1
329	5390201	RUBBER TUBING	1
330	0393141	FLATTENED CLAMP BOLT	1
331	0393131	SLOTTED WASHER	1
332	9121420	5/16-18 HEX NUT	1
333	0393121	CLAMP LEVER	1
334	0393321	HANDLE GRIP	1
335	9121680	5/16-18 X 1 HEX BOLT	1
336	9120850	1/4-20 X 5/16 SET SCREW - KNURL POINT	1
337	5990331	O-RING	1

LOWER BASE ASSEMBLY

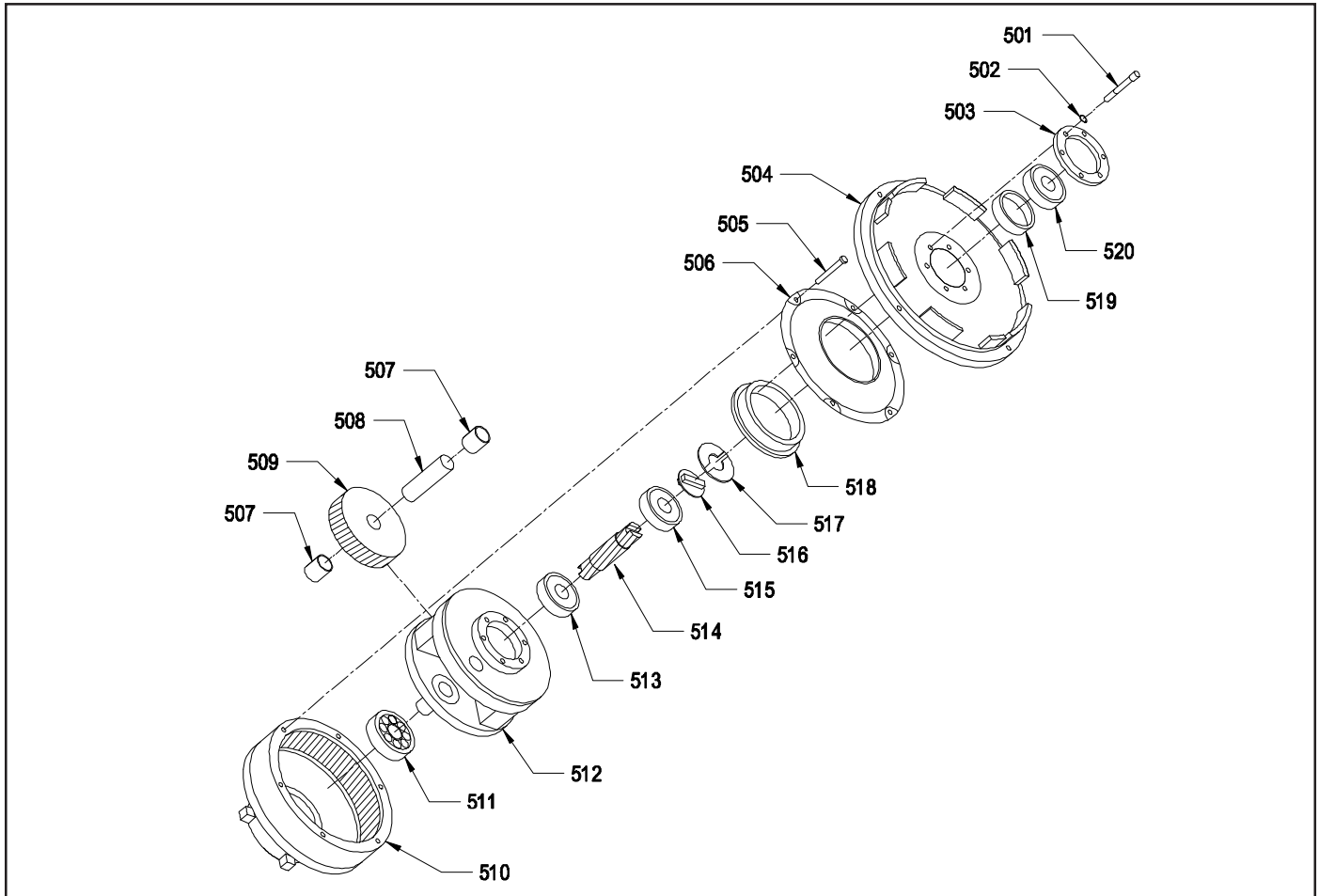


MOTOR ASSEMBLY



<u>ITEM</u>	<u>PART NO.</u>	<u>PART DESCRIPTION</u>	<u>QTY.</u>
401	—	PLUG - NOT AVAILABLE	1
402	5294401	TOP END BELL ASSEMBLY WITH PIGTAIL	1
	—	TOP END BELL ONLY	1
403	5492741	RECTIFIER - 60 AMP	2
404	9120260	8-32 X 3/4 ROUND HEAD PHILLIPS MACHINE SCREW	1
405	9120330	10 EXTERNAL STAR LOCK WASHER	2
406	9120771	10-32 X 5/8 PAN HEAD PHILLIPS MACHINE SCREW	2
407	5294051	CARBON BRUSHES	4
408	5293881	BRUSH SPRING	4
409	5391321	WIRE NUT - ORANGE	1
410	9120560	10-24 X 1/4 BINDING HEAD SLOT MACHINE SCREW - BRASS	4
411	5490421	BRUSH RING ASSEMBLY WITH DUAL RECTIFIERS	1
412	5293941	HEYCO STRAIN RELIEF	1
413	5990511	CORD	1
414	9120880	1/4 SPLIT LOCK WASHER	2
415	5492801	1/4-20 X 7 HEX WASHER HEAD THRU BOLT	2
416	5294121	FRAME WITH MAGNETS	1
417	5092041	BEARING - TOP	1
418	—	ARMATURE AND VENT FAN ASSEMBLY - 120 VOLT	1
	5294741	ARMATURE AND VENT FAN ASSEMBLY - 240 VOLT	1
419	4491731	VENT FAN	1
420	9123105	1 3/16 I.D. X 1 1/2 O.D. X .018 THICK - 2 WAVE SPRING WASHER (1 3/16)	2

GEAR BOX ASSEMBLY



ITEM	PART NO.	PART DESCRIPTION	QTY.
501	9120774	10-32 X 1 3/16 SOCKET HEAD CAP SCREW	6
502	9120495	10 INTERNAL STAR LOCK WASHER	6
503	5391021	BEARING RETAINER PLATE	1
504	5391101	MOTOR END BELL	1
505	9120430	10-24 X 3/4 ROUND HEAD MACHINE SCREW	6
506	—	GEAR HOUSING COVER	1
507	5391171	IDLER SHAFT BEARING	6
508	5391181	IDLER SHAFT	3
509	5391191	IDLER GEAR	3
510	—	GEAR HOUSING	1
511	5391201	LOWER BEARING	1
512	—	3 IDLER CAGE	1
513	5391031	BEARING	3
514	5391071	PINION - 13 TEETH	1
515	5391031	BEARING	3
516	5095301	ODUM COUPLING	1
517	5391251	SHAFT WASHER	1
518	5391141	BEARING - GEAR HOUSING	1
519	5391041	BEARING SPACER	1
520	5391031	BEARING	3

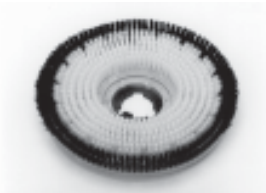
ACCESSORIES



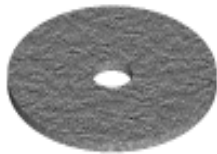
- 2890101 PLASTIC CLUTCH PLATE - 5" DIAMETER - 6 HOLES
- 2890981 PLASTIC CLUTCH PLATE - 4" DIAMETER - 3 HOLES
- 2890991 ALUMINUM CLUTCH PLATE - 5" DIAMETER - 6 HOLES
- 2893001 ALUMINUM CLUTCH PLATE - 4" DIAMETER - 3 HOLES



- 2897211 17" POLY BACK TUFTED PAD DRIVER
- 2897601 17" STRUCTURAL FOAM PAD DRIVER
- 2897201 17" POLY BACK NYLON FILL SCRUB BRUSH - LIGHT TO MEDIUM SCRUB
- 2897711 17" POLY BACK NYLON GRIT FILL SCRUB BRUSH - HEAVY CONCRETE SCRUB
- 2897821 17" POLY BACK NYLON - SOFT SCRUB BRUSH - CARPET ONLY
- 2897901 17" POLY BACK SCRUB GRIT BRUSH - MILD TO MEDIUM SCRUB



- 2892211 20" POLY BACK TUFTED PAD DRIVER
- 2892601 20" STRUCTURAL FOAM PAD DRIVER
- 2892201 20" POLY BACK NYLON FILL SCRUB BRUSH - LIGHT TO MEDIUM SCRUB
- 2892651 20" POLY BACK NYLON FILL SCRUB BRUSH - WITH GUIDE FOR CARPET SHAMPOOING
- 2892711 20" POLY BACK NYLON GRIT FILL SCRUB BRUSH - HEAVY CONCRETE SCRUB
- 2892031 20" PLASTIC BACK BASSINE SCRUB BRUSH - GENERAL SCRUB
- 2892701 20" POLY BRUSH - SHOWER FEED - STANDARD CARPET SCRUB
- 2892901 20" POLY BACK SCRUB GRIT BRUSH - MILD TO MEDIUM SCRUB



- NOTE: ALL PADS COME 5 PADS PER CASE
- 7991751 17" LITE BLUE POLISH/BURNISH PAD - SOFT FINISH
 - 7991741 17" UHS CLEAN BUFF PAD - REMOVE SCUFF MARKS NOT FINISH
 - 7991731 17" BLUE SCRUB PAD - TOP SCRUB AND LIGHT FINISH REMOVAL
 - 7991721 17" GREEN SCRUB PAD - HEAVY FINISH REMOVAL
 - 7991701 17" BLACK STRIP PAD - REMOVES FINISH COMPLETELY

- 7992051 20" LITE BLUE POLISH/BURNISH PAD - SOFT FINISH
- 7992041 20" UHS CLEAN BUFF PAD - REMOVE SCUFF MARKS NOT FINISH
- 7992031 20" BLUE SCRUB PAD - TOP SCRUB AND LIGHT FINISH REMOVAL
- 7992021 20" GREEN SCRUB PAD - HEAVY FINISH REMOVAL
- 7992001 20" BLACK STRIP PAD - REMOVES FINISH COMPLETELY
- 7992011 20" BROWN STRIP PAD - REMOVES FINISH COMPLETELY

TWISTER PADS

- | | | | |
|---------|-------------------------|---------|-------------------------|
| 7990831 | 17" TWISTER STARTER KIT | 7990851 | 20" TWISTER STARTER KIT |
| 7991801 | 17" TWISTER RED PAD | 7992141 | 20" TWISTER RED PAD |
| 7991791 | 17" TWISTER WHITE PAD | 7992131 | 20" TWISTER WHITE PAD |
| 7991771 | 17" TWISTER YELLOW PAD | 7992121 | 20" TWISTER YELLOW PAD |
| 7991761 | 17" TWISTER GREEN PAD | 7992101 | 20" TWISTER GREEN PAD |



- 2890201 SPRAY BUFF APPLICATOR - PUMP UP TYPE



- 5094771 DELUXE SOLUTION TANK - 3.5 GALLON WITH BRASS VALVES



NSS ® Enterprises, Inc.

3115 Frenchmens Road, Toledo, Ohio 43607
 PHONE (419) 531-2121 FAX (419) 531-3761

NSS ® Enterprises, Inc. European Distribution Centre
 Unit II, Pinfold Trading Estate * 55 Nottingham Road
 STAPLEFORD, NOTTINGHAM NG9 8AD ENGLAND U.K.
 PHONE: (44) 0115 939 1568 * FAX: (44) 0115 949 0615