



Electronic Service Manuals

This electronic document is provided as a service to our customers. We do not create the contents of the information contained in this document. Should you have detailed questions pertaining to the information contained in this document, you may contact Michco, or the manufacturer which provided the original information in this electronic deliverable. Michco's only part in this electronic deliverable was the electronic assembly process. By providing this manual on line we are not guaranteeing parts availability.

You may contact Michco through the following methods:

Phone (517) 484-9312 or (800) 331-3339

2011 N. High St. -- Lansing, Michigan -- 48906

Fax: (517) 484-9836

Email: CustServe@Michco.com

Web site: www.Michco.Com

Parts Web site: www.FloorMachineParts.Com

Order Parts on Line at:

www.FloorMachineParts.Com

Directly to Parts & Service:

By Email: **Shop@Michco.com**

By Fax: (517) 702-2041

By Voice: Use numbers above.

Serving the Cleaning Industry Since 1922

Notice: All copyrighted material remains property of original owners, all trademarks are property of respective owners. Manuals are subject to Manufacturer's reproduction limitations. Originals or reproductions were provided by manufacturers through a request. We make no warranty as to the correctness of information provided in this document and you assume all risk. By placing these manuals on line we are not declaring our corporation to be an manufacturer authorized dealer or provider, please check our web site for authorized manufacturers we represent.

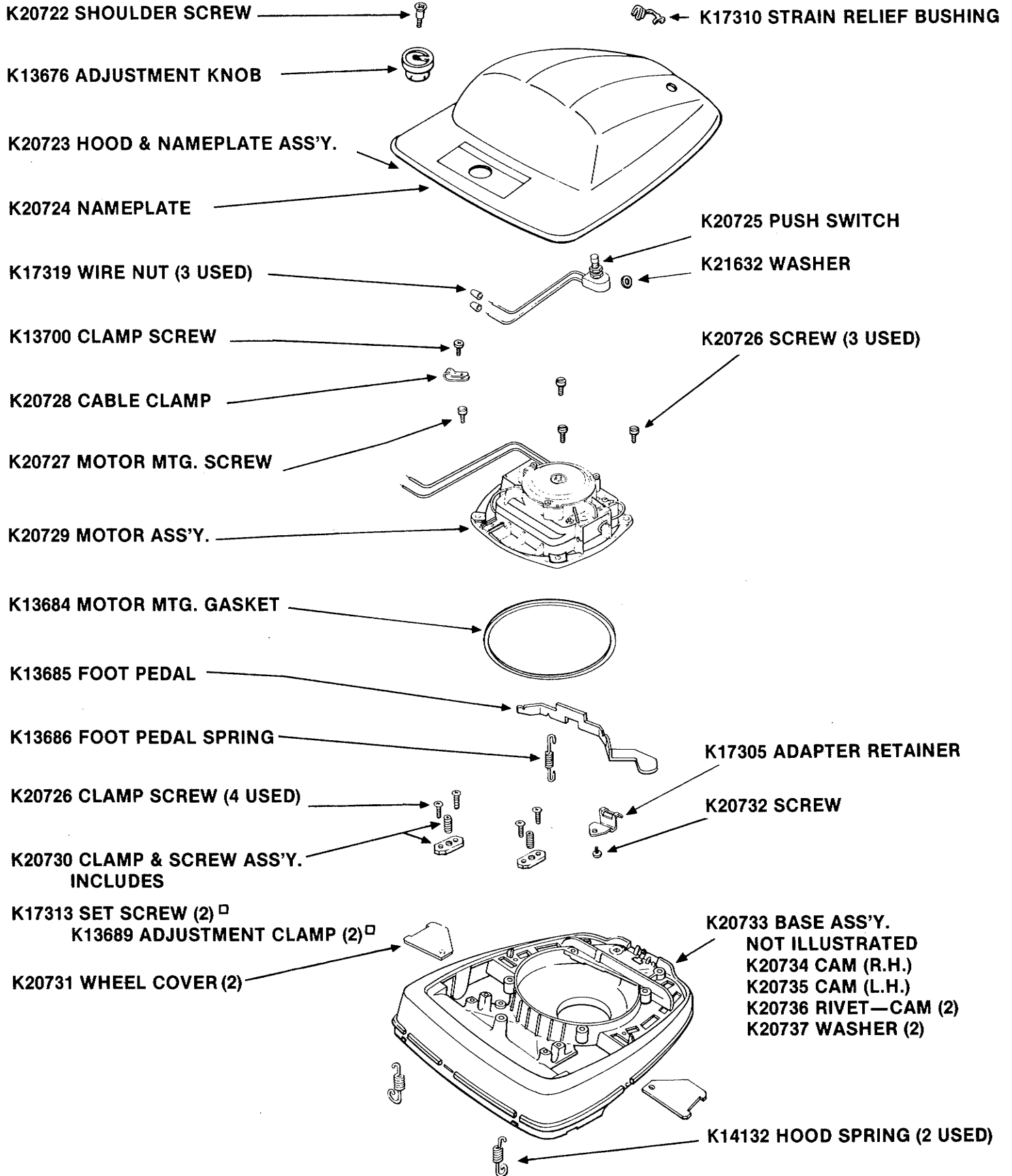
REPAIR PARTS LIST

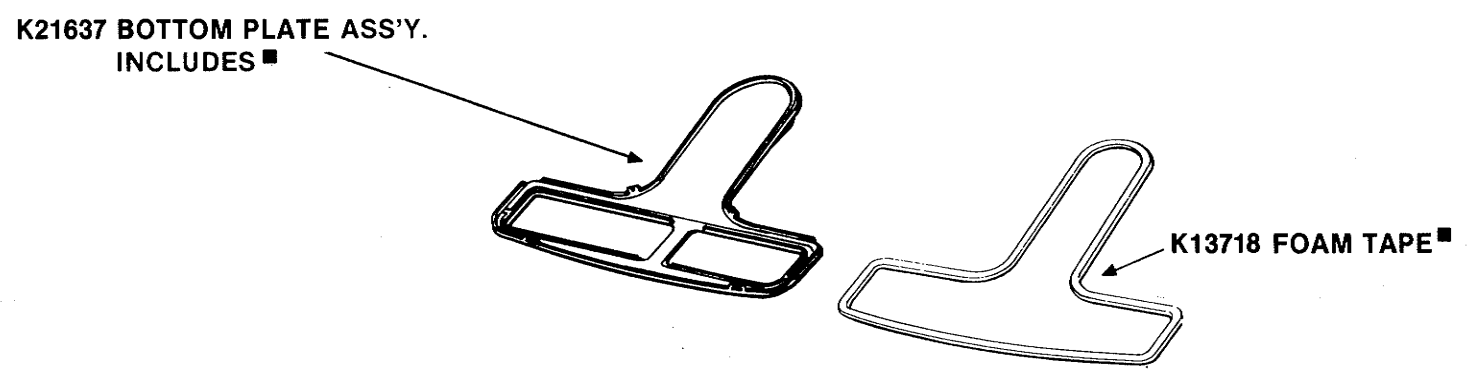
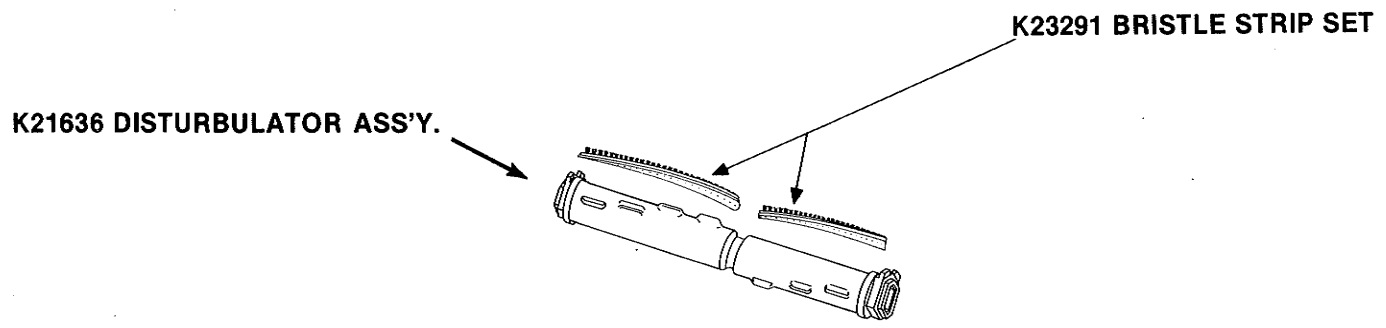
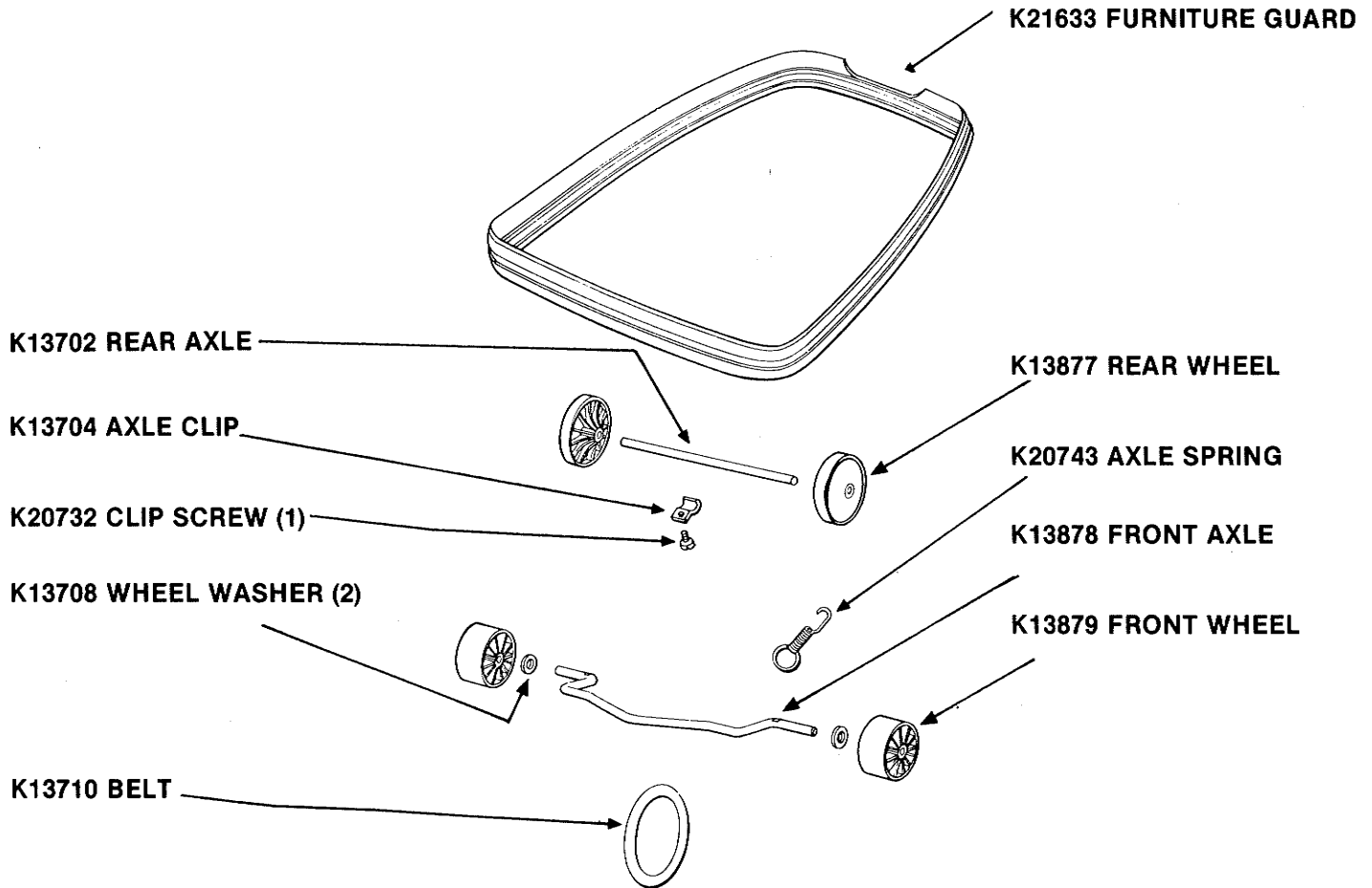
NOBLES KNIGHT

MODEL KN11CH

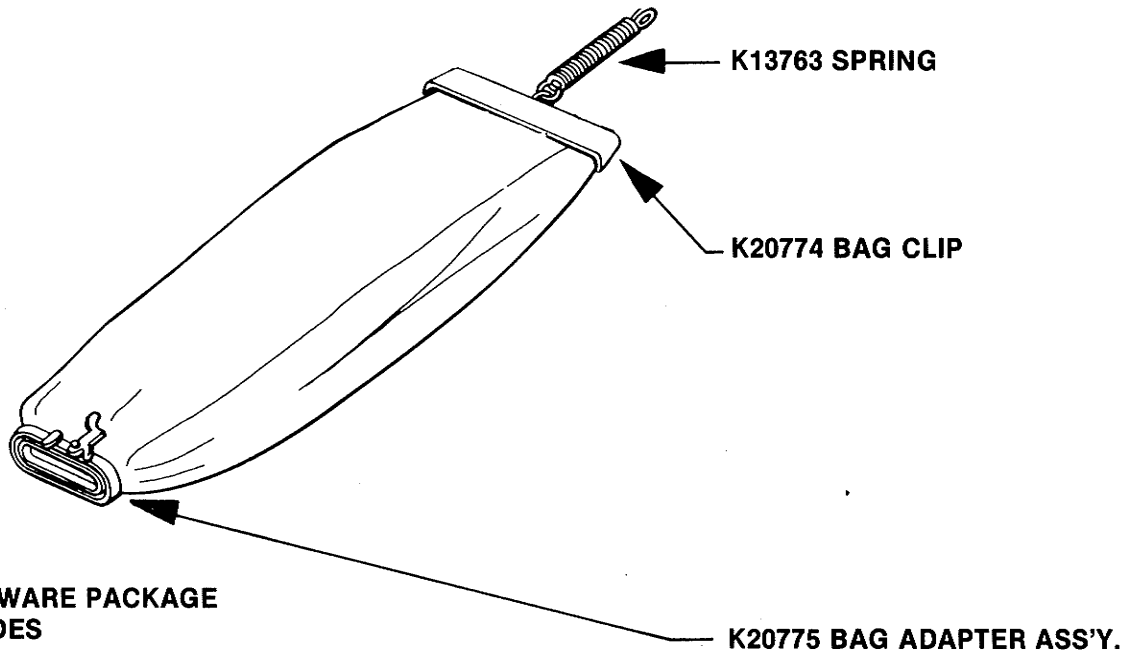


645 E. 7th ST., ST. PAUL, MINN. 55106





K20773 BAG ASSEMBLY COMPLETE

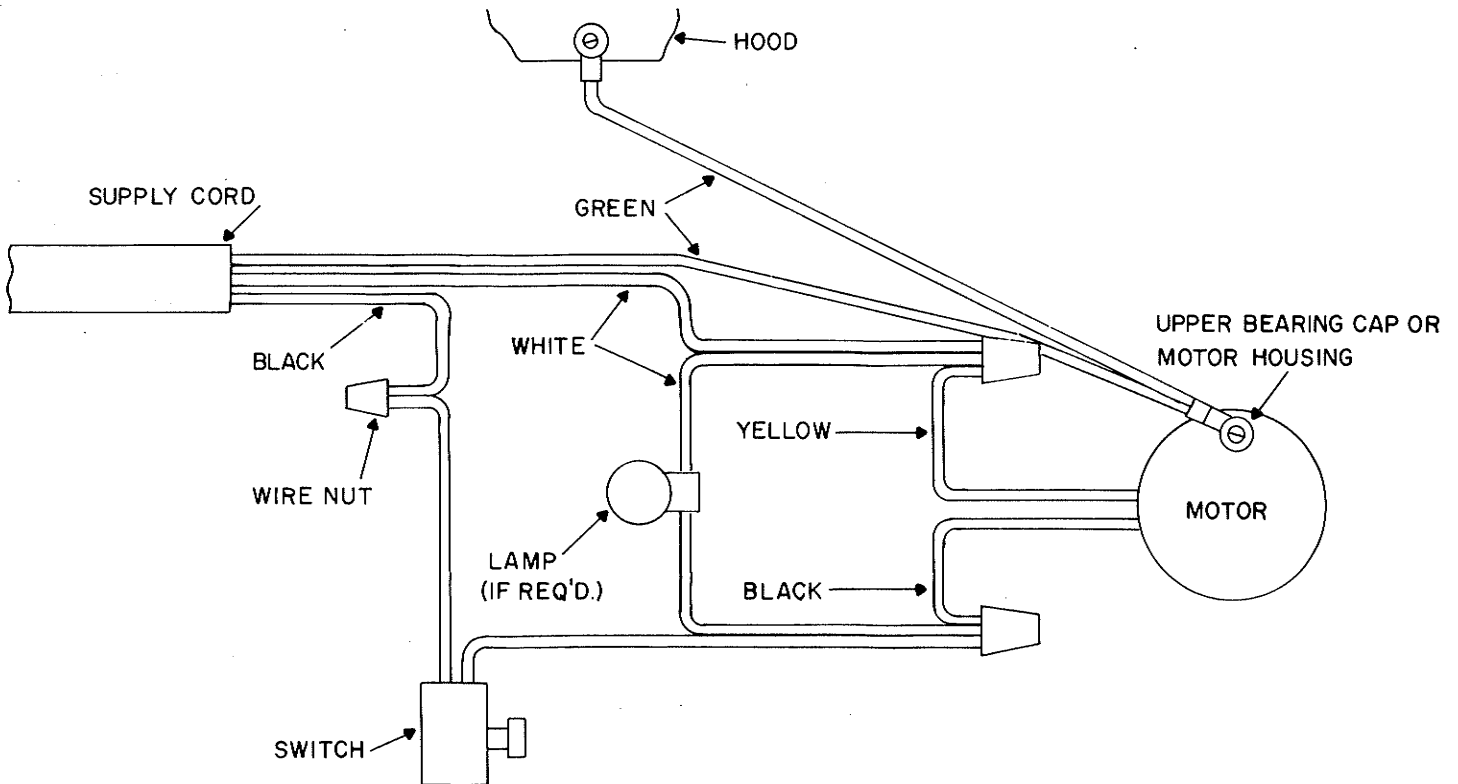


**K20777 HARDWARE PACKAGE
INCLUDES**

- K13710 BELT
- K20763 CORD RETAINER (UPPER)
- K20766 CORD RETAINER (LOWER)
- K20765 HANDLE & SCREW ASS'Y.

K20775 BAG ADAPTER ASS'Y.

- K13766 CAM
- K20776 WASHER
- K17315 RIVET
- K13894 GASKET



36575 WIRING DIAGRAM

K20729 MOTOR ASSEMBLY

K20751 RETAINER SCREW (3)

K13881 RETAINER ASSEMBLY

K20752 HEX NUT (4)

K13755 LOCKWASHER (2)

K17317 BRUSH SCREW (2)

K13751 MOTOR BRUSH ASSEMBLY (2)

K13752 MOTOR COVER

K13753 ARM, FAN & BEARING ASSEMBLY
K13883 BEARING
K20753 FAN

K21643 LOCKNUT (2)

K20754 FIELD ASSEMBLY

K20755 MOTOR BASE ASSEMBLY
K14585 BEARING & RETAINER
K14586 BEARING
K16783 RETAINER
K14588 RIVET (3)

K20756 TIE FASTENER

K20757 ORLO THD. SCREW (2)

K13759 WASHER

K20758 FAN WASHER

K20759 FAN

K20758 FAN WASHER

K20760 PULLEY

