



Electronic Service Manuals

This electronic document is provided as a service to our customers. We do not create the contents of the information contained in this document. Should you have detailed questions pertaining to the information contained in this document, you may contact Michco, or the manufacturer which provided the original information in this electronic deliverable. Michco's only part in this electronic deliverable was the electronic assembly process. By providing this manual on line we are not guaranteeing parts availability.

You may contact Michco through the following methods:

Phone (517) 484-9312 or (800) 331-3339

2011 N. High St. -- Lansing, Michigan -- 48906

Fax: (517) 484-9836

Email: CustServe@Michco.com

Web site: www.Michco.Com

Parts Web site: www.FloorMachineParts.Com

Order Parts on Line at:

www.FloorMachineParts.Com

Directly to Parts & Service:

By Email: **Shop@Michco.com**

By Fax: (517) 702-2041

By Voice: Use numbers above.

Serving the Cleaning Industry Since 1922

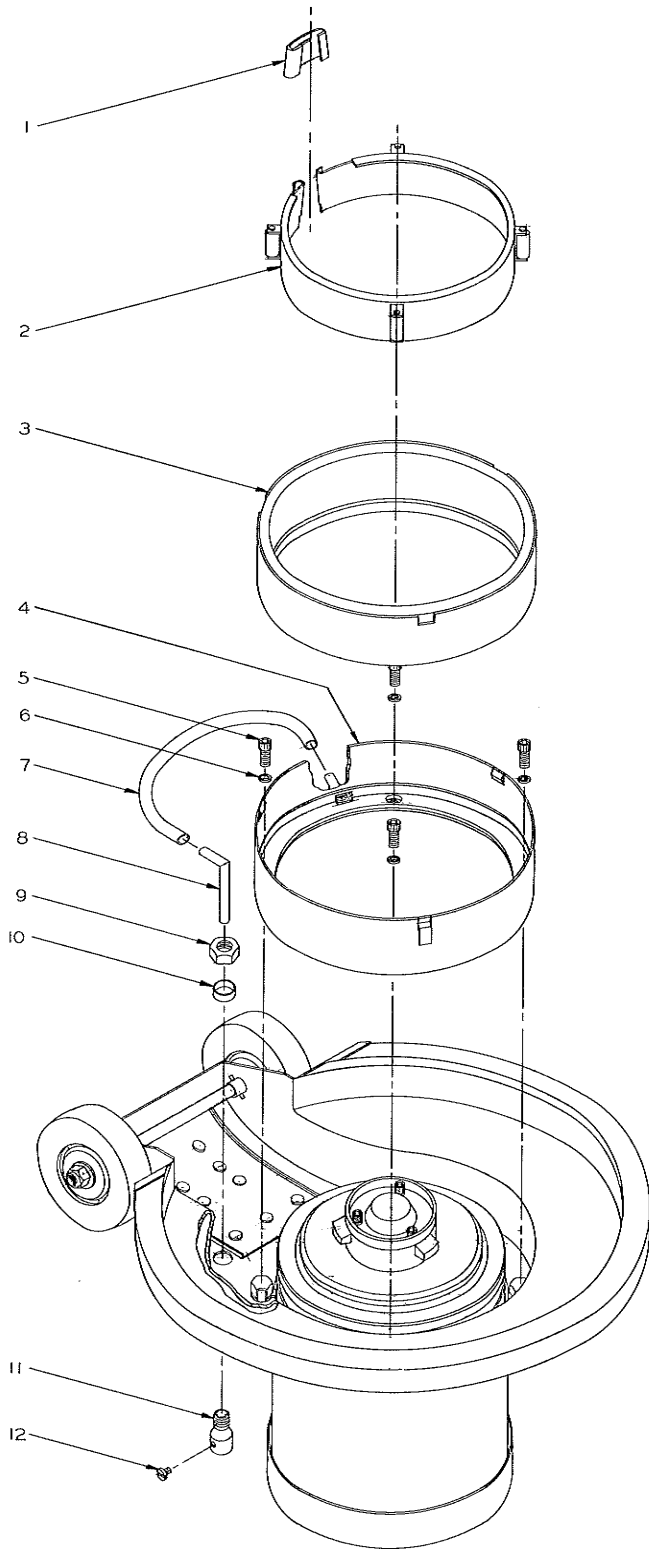
Notice: All copyrighted material remains property of original owners, all trademarks are property of respective owners. Manuals are subject to Manufacturer's reproduction limitations. Originals or reproductions were provided by manufacturers through a request. We make no warranty as to the correctness of information provided in this document and you assume all risk. By placing these manuals on line we are not declaring our corporation to be an manufacturer authorized dealer or provider, please check our web site for authorized manufacturers we represent.



645 E. 7th ST., ST. PAUL, MINN. 55106
 TELEPHONE (612) 771-5581
 TELEX NO. 29-7403

FORM 165-6751
 PARTS BREAKDOWN
 EFFECTIVE DECEMBER 8, 1975
 (Supersedes All Other Lists)
 E. E. O. EMPLOYER M/F

ROTO-FOAMER ASSEMBLY – C14145



NO.	PART NAME	QTY.	PART NO.	PRICE
1	Retaining Clip (Marked "N" – For Motors beginning with No. 53Mp)	1	A14115	PRICES ON REQUEST
	Retaining Clip (Marked "S" – For Motors beginning with No. 53L20)	1	A14121	
2	Rotating Ring & Rollers	1	C14117	
3	Foam & Ring	1	C14113	
4	Stationary Ring	1	C14110	
5	Soc. Hd. Cap Screw	4	K14144-10	
6	Lock Washer	4	K2964-14	
7	Vinyl Tubing	1	K5384-9	
8	Copper Tubing	1	A14122	
9	Jam Nut	1	K14143	
10	Spacer	1	A14167	
11	Tube Holder	1	A14118	
12	Pan Hd. Machine Screw	1	K4770-4	
13	Allen Wrench	1	K14337	

ROTO-FOAMER MOUNTING INSTRUCTIONS

1. Unpack Roto-Foamer Ass'y. Inspect for freight damage. If damaged, file claim with freight carrier.
2. Turn Speedshine upside down on its motor. Unit should be placed on an elevated object.
3. Remove hole plug – insert tube holder (11) – drop spacer (10) over tube holder (11) – securely tighten jam nut (9) onto tube holder (11) – drop in copper tubing (8) – end to be pointing toward back of machine – tighten screw (12).
4. Remove four hex hd. bolts and four lockwashers – insert stationary ring (4) with inlet tube in position shown – secure with four lockwashers (6) and four soc. hd. cap screws (5).
5. Push vinyl tube onto copper tubing (8) and inlet tube.
6. Snap in foam ring (3).
7. Insert rotating ring (2) – for motors beginning with No. 53MP, Lip will stop against bottom of gear box – for motors beginning with No. 53L20, edge will stop against ledge on side of gear box.
8. Insert retaining clip (1) with slot up towards bottom of machine as shown, tap down until approx. flush with Lip of rotating ring (2) – NOTE: Use clip marked "N" for motors beginning with No. 53MP, Use clip marked "S" for motors beginning with No. 53L20.

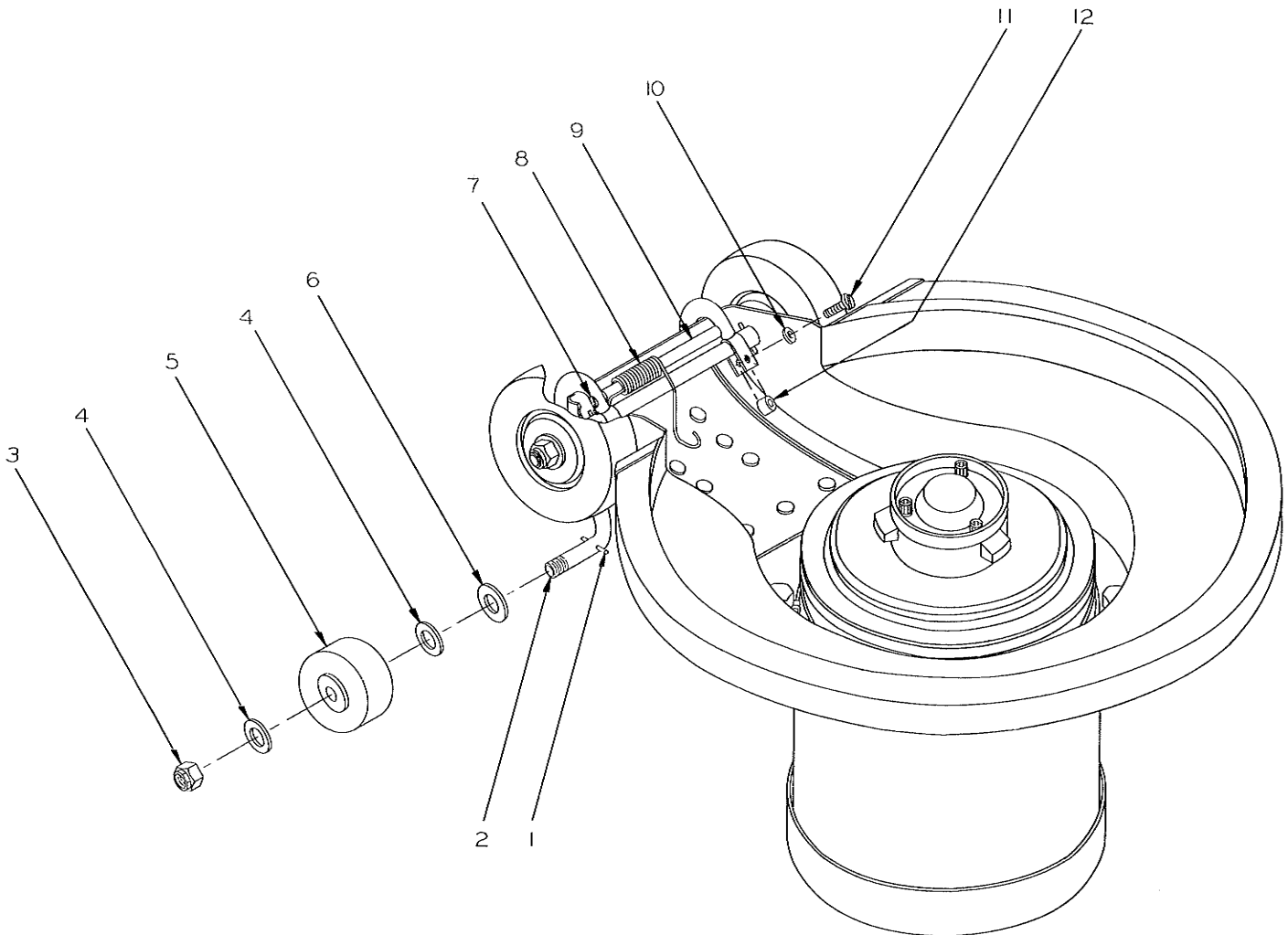
ROTO-FOAMER KICK-UP WHEELS ASSEMBLY C14351 MOUNTING INSTRUCTIONS

KICK-UP WHEELS MOUNTING INSTRUCTIONS

1. Unpack Kick-up Wheel Ass'y. Inspect for freight damage. If damaged, file claim with freight carrier.
2. Turn Speedshine upside down on its motor. Unit should be placed on an elevated object.
3. Insert weldment (2) onto existing axle-lifting spring (8) — loop over axle as shown.
4. Insert spacers (12) between "U" shaped parts and secure with lockwashers (10) and screws (11).
5. Mount wheels as shown.

PARTS BREAKDOWN

NO.	PART NAME	QTY.	PART NO.	PRICE
1	Roll Pin	2	K5115	PRICES ON REQUEST
2	Weldment	1	C14349	
3	Flex Lock Nut	2	K5237	
4	Compression Washer	4	K5236	
5	Wheel	2	A14354	
6	Flat Washer	2	K6306-6	
7	Flat HD. Screw	2	K14355-12	
8	Spring	1	A14344	
9	Spring Holder	1	A14343	
10	Lock Washer	2	K2964-10	
11	Pan HD Screw	2	K4770-12	
12	Spacer	2	A14342	



NOTE: Will fit any Nobles Speedshine.