



Electronic Service Manuals

This electronic document is provided as a service to our customers. We do not create the contents of the information contained in this document. Should you have detailed questions pertaining to the information contained in this document, you may contact Michco, or the manufacturer which provided the original information in this electronic deliverable. Michco's only part in this electronic deliverable was the electronic assembly process. By providing this manual on line we are not guaranteeing parts availability.

You may contact Michco through the following methods:

Phone (517) 484-9312 or (800) 331-3339

2011 N. High St. -- Lansing, Michigan -- 48906

Fax: (517) 484-9836

Email: CustServe@Michco.com

Web site: www.Michco.Com

Parts Web site: www.FloorMachineParts.Com

Order Parts on Line at:

www.FloorMachineParts.Com

Directly to Parts & Service:

By Email: **Shop@Michco.com**

By Fax: (517) 702-2041

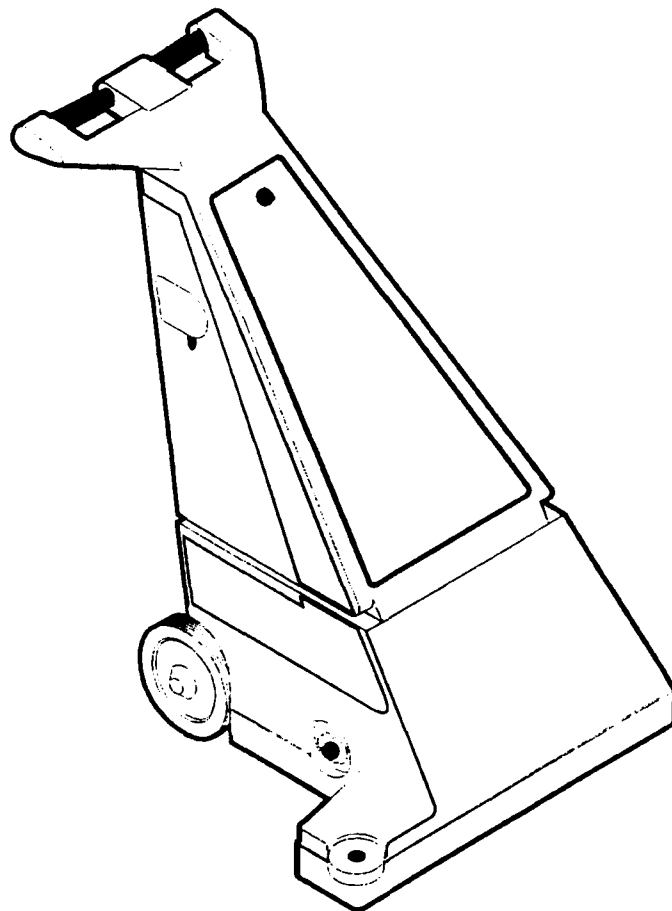
By Voice: Use numbers above.

Serving the Cleaning Industry Since 1922

Notice: All copyrighted material remains property of original owners, all trademarks are property of respective owners. Manuals are subject to Manufacturer's reproduction limitations. Originals or reproductions were provided by manufacturers through a request. We make no warranty as to the correctness of information provided in this document and you assume all risk. By placing these manuals on line we are not declaring our corporation to be an manufacturer authorized dealer or provider, please check our web site for authorized manufacturers we represent.



PARTS



KC-280

Spare Parts List

SPECIFICATIONS

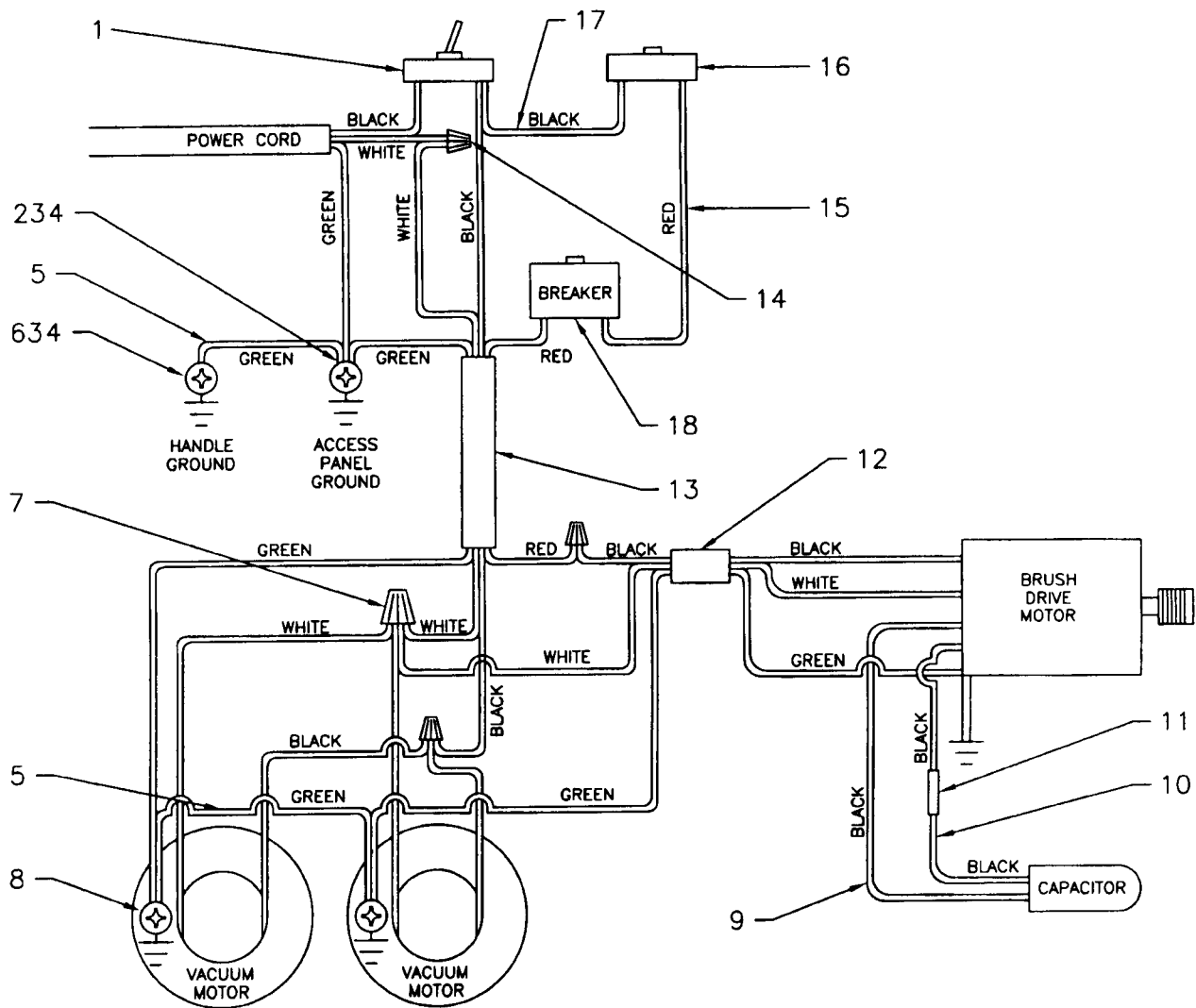
Construction	Roto-molded polyethylene
Controls:	
Vacuum Motor	ON/OFF Toggle Switch
Brush Drive Motor	Squeeze Trigger (Dead-man Switch)
Circuit Breaker	10 Amps
Brush Drive Motor / RPM	1/3 HP / 1,750
Voltage / Hertz	115 / 60
Vacuum Motor	Two single-stage nonbypass 1-1/8 PHP
Sealed Lift	55 in. / 139.7 cm
Air Flow	180 cfm @ 3 in. / 76 cm Orifice
Brush	2.75 in. / 7 cm Diameter, 25.25 in. / 64.1cm Long
Core	Polypropylene
Bristles	Nylon, Herringbone Pattern
Brush Speed (RPM)	1300
Brush Height Adjustment	8-Position
Brush Wear Adjustment	2-Position
Debris Bag	Corduroy Cloth
Capacity	1.12 bu. / 39.6 L
Filter Area	1,100 in. / 7,097 cm
Wheels:	
Front	Two-2 in. / 5.1 cm Diameter, swivel type
Rear	Two-8 in. / 20.3 cm Diameter, non-marking
Power Cord	14-3 SJT, (75 ft. / 22.9 m) Long
Decibel Rating	72 Dba
Dimensions	41 in. / 104 cm Long, 29.5 in. / 75 cm Wide, 38 in. / 96.5 cm High
Gross Weight	140Lbs / 63.5 Kg
Machine Weight	97 Lbs / 44 Kg

RECOMMENDED SPARE PARTS

The following spare parts should be ordered to avoid possible down time from normal wear, or part failure.

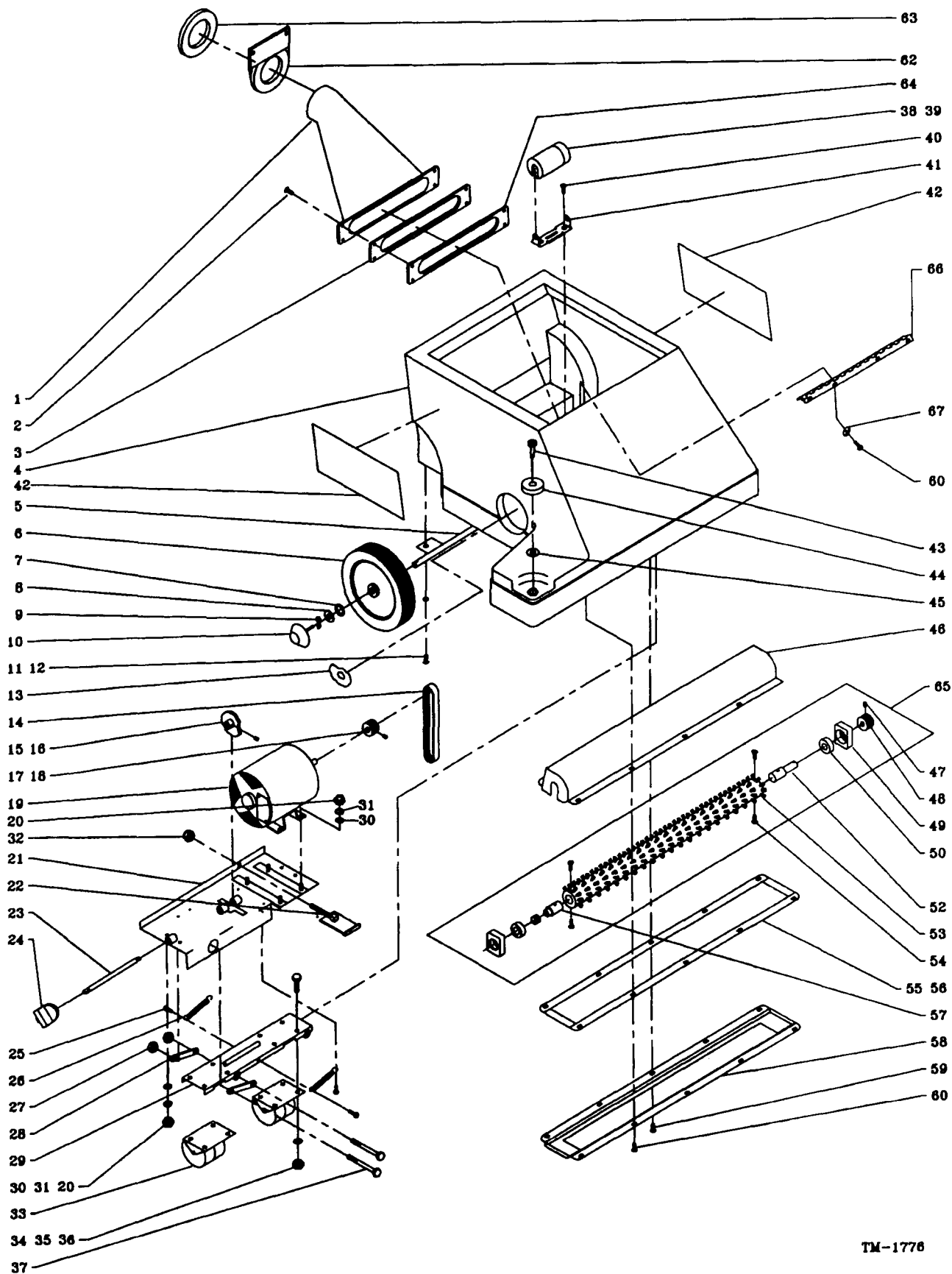
PART NO.	DESCRIPTION	QTY.
055083	BAG,CLOTH—28IN UPRIGHT	1
046817	LINT FILTER	1
025580	CORD,POWER—14-3,SJT,GRAY,75'	1
055084	GUARD,BAG—28IN UPRT,14X10	1

WIRING DIAGRAM



DET. PART NO.	DESCRIPTION	QUANT.	DET. PART NO.	DESCRIPTION	QUANT.
1	026973 SWITCH, TOGGLE—SPST, 10A, 250VAC	1	11	051545 SPLICE, CONDUCTOR—16-14AWG, INS	1
2	001327 SCR MACH PAN HD 10-24X.750L	1	12	025903 CABLE, ELECT—16-3, SJT, 40IN	1
3	004253 WSHR LK .204ID, 410OD, 025T EXT	6	13	025897 ASM, WIRE—4 CNDCT, 14GA, COMB	1
4	003279 NUT, HEX— 10-24, ZN PLT	6	14	026464 NUT, WIRE-IDEAL 73B	3
5	025707 ASM, WIRE—16GA, GRN-8.0L, RINGS	2	15	025648 ASM, WIRE—16GA, RED, 9.0L, COMB	1
6	001295 SCR MACH RD HD 10-24X.625L	1	16	026412 SWITCH-PUSH—SPDT, 21A, 120-240V	1
7	026400 NUT, WIRE—IDEAL 74B	1	17	025902 ASM, WIRE—16GA, BLK, 7.0L, COMB	1
8	005316 SCR TPG F PAN HD 10-24X.375L	2	18	026751 CIRCUIT BREAKER—10AMP	1
9	025880 ASM, WIRE—16GA, BLK, 17.00L, QD	1			
10	025879 ASM, WIRE—16GA, BLK, 17.00L, QD	1			

BASE ASSEMBLY

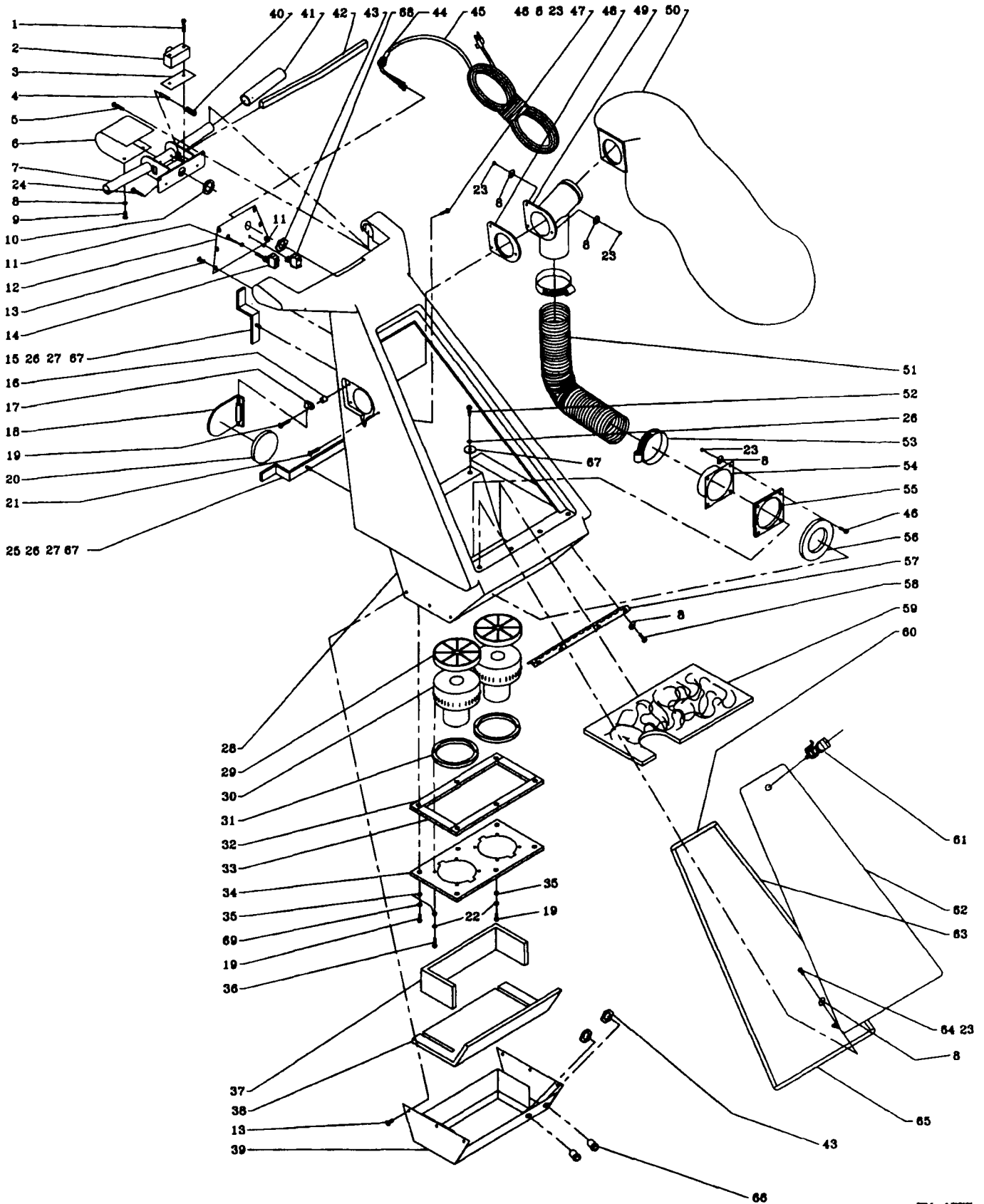


TM-1776

BASE ASSEMBLY PARTS LIST

DET.	PART NO.	DESCRIPTION	QUANT.	DET.	PART NO.	DESCRIPTION	QUANT.
1	055121	TUBE,INTAKE—MACHINED,28IN UPRT	1	34	003243	SCR CAP HEX HD .312-18X.625L	8
2	005456	SCR MACH PAN HD 10-24X.500L	4	35	004212	WSHR LK .326ID.586OD.078TSPLT	8
3	055122	GASKET,FOAM—2.125X12.500,.19T	1	36	003356	NUT,HEX JAM—.312-18,ZN PLT	8
4	055026-1	BASE,MACH—28" UPRIGHT	1	37	223225	SCR CAP HEX HD .375-16X4.00L	4
5	034671-24	WDMT,REAR AXLE—28" UPRT,GRAY	1	38	028798	CAPACITOR	1
6	052893-2	WHEEL—GRAY/BLK,MACH,8.00OD	2	39	051714	CAP,ELEC—CAPACITOR,MACHINED	1
7	004497	WSHR SPR TNSN .500ID.750OD.011	2	40	001211	SCR TPG F FL HD 10-ABX.625L	2
8	005227	WSHR FLT .531ID.875OD.036T STL	2				
9	005200	PIN,COTTER—.125X1.000 LONG	2	41	051595	RETAINER,CAPACITOR—KC-300	1
10	052204-1	CAP,HUB—PLSTC,GRAY,3.19BC	2	42	054812	LABEL,IDENT—KENT,DIE-CUT,WHT	2
				43	005600	SCR SHLDR HEX HD .312-18,1.00S	1
11	002248	SCR MACH RD HD .250-20X.750L	2	44	049261	WHEEL—3.00DIA.,.380BORE,.875HB	1
12	004254	WSHR LK .267ID.510OD.028T EXT	2	45	004320	WSHR SPR TNSN .375ID.750OD.014	1
13	057686	LABEL,INSTR—HGT ADJ,GRAY	1	46	034673	WDMT,BRUSH HOUSING—28IN UPRT	1
14	055123	BELT,V—6V'S,22.00"PITCH LG	1	47	004364	PIN,ROLL—.125 DIA,1.000L	1
15	034679	WDMT,CAM—HEIGHT ADJUSTMENT	1	48	055125	PULLEY,GRVD— 6 GRV,1.312 PD	1
16	001503	SCR SET CUP PT .312-18X.312L	1	49	055030	MOUNT,BEARING—BRUSH,PLSTC	2
17	054011	PULLEY,GRVD—6GRV,ALUM,1.000	1	50	027222	BRG,BALL—.625ID,1.375OD,.437W	2
18	002408	PIN,ROLL—.125 DIA, .750L	1				
19	025873	MTR,AC—115/60,.33HP,MODIF	1	52	055128	SHAFT,BRUSH—LONG,28IN UPRIGHT	1
20	003349	NUT,HEX—.312-18,ZN PLT	8	53	055126	BRUSH,CYL—2.75 ODX25.25 LONG	1
				54	001334	SCR MACH FLAT HD 10-24X.750L	4
21	034675	WDMT,MTR BRACKET—28IN UPRT	1	55	052279	PLSTC,CELLR,CLOSED—.50X4.18L	2
22	034691	WDMT,ADJUST BRACKET—28IN UPRT	1	56	055187	GASKET,FOAM—.125X.750	2
23	055137	SHAFT—.375DIA,HEIGHT ADJ	1	57	055127	SHAFT,BRUSH—SHORT,28IN UPRT	1
24	055136	KNOB,PLASTIC—.375INSERT,1.75D	1	58	034678	PLT,STL—16GA,SS,FORMED	1
25	005316	SCR TPG F PAN HD 10-24X.375L	4	59	002416	SCR TPG F PAN HD 10-10X.375L	1
26	055135	SPRING,EXT .250D 3.25L .037WD	2	60	001366	SCR MACH PAN HD 10-32X.500L	13
27	005279	NUT,HEX LOCK—.375-16,NYLOC	4				
28	055031	BAR,STL—.125X.750, 2.75LONG	4	62	055217	BRACKET,INTAKE TUBE—28IN UPRT	1
29	034677	WDMT,CASTER BRACKET—28IN UPRT	1	63	055054	GASKET,FOAM—2.88ID,4.50OD,.50	1
30	004217	WSHR FLT .344ID.625OD.071T STL	8	64	055615	PLATE,STL—2.14X11.69,INTAKE	1
				65	057655	ASM,BRUSH—KC-280	1
31	004444	WSHR LK .332ID.610OD.034T EXT	8	66	055213-24	HINGE,BUTT—GRAY	1
32	003378	NUT,HEX LOCK—.312-18,ZN PLT	1	67	004253	WSHR LK .204ID.410OD.025T EXT	4
33	055134	CASTER—2.00DIA,2.75X3.75PLATE	2				

UPPER TANK ASSEMBLY



TM-1777

UPPER TANK ASSEMBLY PARTS LIST

DET.	PART NO.	DESCRIPTION	QUANT.	DET.	PART NO.	DESCRIPTION	QUANT.
1	001312	SCR TPG C RD HD 6-32X1.00L	2	35	111384	BUSHING 1 7/32X3/16	14
2	026412	SWITCH-PUSH—SPDT,21A,120-240V	1	36	005482	SCR TPG F PAN HD 10-24X.875L	8
3	046653	INSUL PAPER	1	37	055118	FOAM,MUFFLER—DEFLECTOR,2.5X20	1
4	005467	PIN,ROLL—.125 DIA,1.750L	2	38	055117	FOAM,MUFFLER—CVR,10.25X18.80	1
5	002248	SCR MACH RD HD .250-20X.750L	2	39	034668	WDMT,MUFFLER—28IN UPRIGHT	1
6	034664-24	WDMT,SWITCHBOX COVER—28",GRAY	1	40	046648	SPRING,COMP .344D .687L .032WD	2
7	034663-24	WDMT,HANDLE—28IN UPRIGHT,GRAY	1	41	047418	HANDLE-GRIP	2
8	004253	WSHR LK .204ID.410OD.025T EXT	19	42	050274	TRIGGER BAR-BLK	1
9	002213	SCR MACH RD HD 10-24X2.25L	2	43	006108	NUT,SPECIAL—.500 PIPE.HEX LOC	3
10	046651	GROM—.625ID,.875MHD,.062PA	1	44	027003	BSHG,STRAIN RLF—.170-.470	1
11	004427	WSHR FLT .344ID1.25OD.120T STL	2	45	025580	CORD,POWER—14-3,SJT,GRAY,75'	1
12	055046-24	COVER,ACCESS—UPRIGHT,GRAY	1	46	001334	SCR MACH FLAT HD 10-24X.750L	6
13	002416	SCR TPG F PAN HD 10-10X.375L	12	47	046647	CLAMP,LOOP—.500 DIA.,STL	3
14	026973	SWITCH,TOGGLE—SPST,10A,250VAC	1	48	055149	GASKET,FOAM—3.50X4.00,.18THK	1
15	034687-24	WDMT,CORD HOOK,GRAY	1	49	055037	ELBOW,VALVE—28IN UPRIGHT,ACC	1
16	050406	SPACER,NYLON—.203X.437,.125L	2	50	055083	BAG,CLOTH—28IN UPRIGHT	1
17	055207	CLAMP,LOOP—.125 DIA,NYLON	2	51	055081	HOSE,VAC—3.00ID,25.0IN LONG	1
18	034706-24	WDMT,DOOR—ACC,28",GRAY	1	52	223214	SCR MACH RD HD .312-18X.750L	2
19	002381	SCR TPG F PAN HD 10-10X.875L	8	53	052103	CLAMP,HOSE—3.62 DIA MAX	2
20	055189	GASKET,FOAM—3.250DIA.,.375THK	1	54	034690	WDMT,HOSE CONNECTOR—3.00 DIA	1
21	002461	SCR MACH FLT HD .10-24X1.50L	1	55	055182	GASKET,FOAM—4.00X4.00,INLET	1
22	005407	WSHR FLT .203ID.562OD.045T STL	11	56	055054	GASKET,FOAM—2.88ID,4.50OD,.50	1
23	003279	NUT,HEX— 10-24,ZN PLT	13	57	055213-24	HINGE,BUTT—GRAY	1
24	005478	SCR MACH RD HD .250-20X.500L	2	58	001366	SCR MACH PAN HD 10-32X.500L	4
25	034688-24	WDMT,CORD HOOK—LOWER,GRAY	1	59	055084	GUARD,BAG—28IN UPRT,14X10	1
26	004427	WSHR FLT .344ID1.25OD.120T STL	5	60	055051	GASKET,FOAM—.250X.750, 6.108L	1
27	003378	NUT,HEX LOCK—.312-18,ZN PLT	3	61	055050	LATCH,TWIST—055222,MODIFIED	1
28	055021-1	TANK,UPPER—MACH,28IN UPRIGHT	1	62	034666-24	WDMT,DOOR—28" UPRT,GRAY	1
29	046817	LINT FILTER	2	63	055053	GASKET,FOAM—.250X.750,25.00L	2
30	024078	MTR,VAC—115V,NBP,1 STG	2	64	001295	SCR MACH RD HD 10-24X.625L	4
31	052382	FOAM,CLOSED—4.00ID5.50OD.250T	2	65	055052	GASKET,FOAM—.188X1.50,14.46L	1
32	055041	GASKET,FOAM—.375X.750,13.50L	2	66	026935	BSHG,ELEC CONDCT—.500MPT,2-SCR	2
33	055042	GASKET,FOAM—.375X.750, 6.00L	2	67	S50242	WASHERNOPENRE .250X1.375X.093T	5
34	055023	PLATE,STL—VAC MTR MOUNT	1	68	026751	CIRCUIT BREAKER—10AMP	1
				69	224015	WSHR FLT .187ID1.00OD.063T STL	3



KENT

The Kent Company
2310 Industrial Parkway
P O Box 1665
Elkhart IN 46515 U S A
Telephone (800) 334-1083
(219) 293-8661
Fax (219) 295-8610

083252P-1 5-97 USK