



Electronic Service Manuals

This electronic document is provided as a service to our customers. We do not create the contents of the information contained in this document. Should you have detailed questions pertaining to the information contained in this document, you may contact Michco, or the manufacturer which provided the original information in this electronic deliverable. Michco's only part in this electronic deliverable was the electronic assembly process.

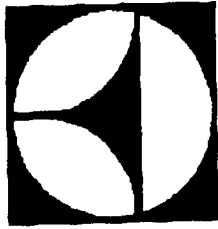
You may contact Michco through the following methods:
Phone (517) 484-9312 or (800) 331-3339 MI, OH, IN only
2011 N. High St. -- Lansing, Michigan -- 48906
Fax: (517) 484-9836
Email: CustServ@Michco.com
Web site: www.Michco.Com
Parts Web site: www.FloorMachineParts.Com

Order Parts on Line at:
www.FloorMachineParts.Com

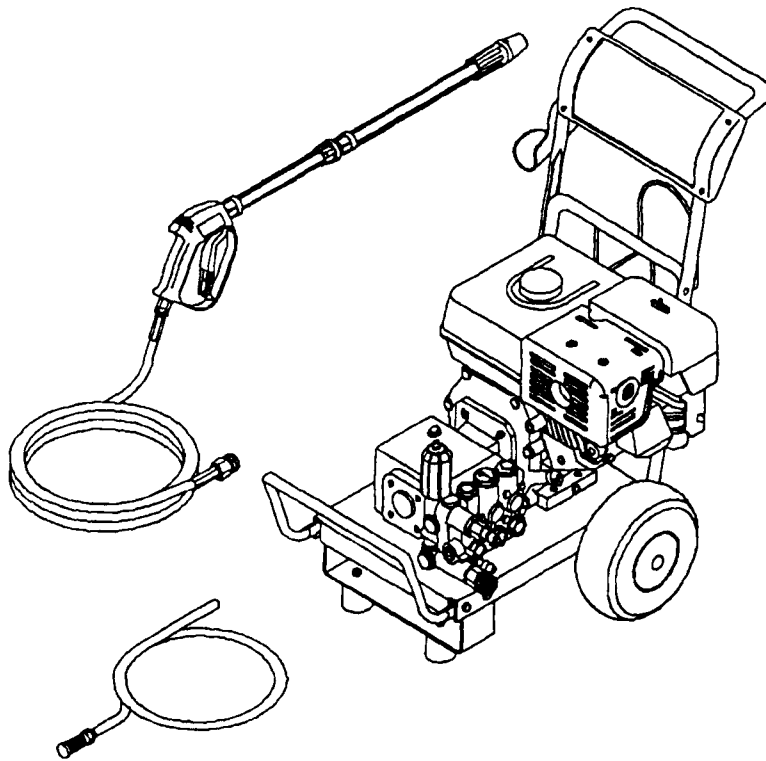
Directly to Parts & Service:
By Email: **Shop@Michco.com**
By Fax: (517) 702-2041
By Voice: Use numbers above.

Serving the Cleaning Industry Since 1922

Notice: All copyrighted material remains property of original owners, all trademarks are property of respective owners. Manuals are subject to Manufacturer's reproduction limitations. Originals or reproductions were provided by manufacturers through a request. We make no warranty as to the correctness of information provided in this document and you assume all risk.



KENT



MODELS:
KW-2200G
KW-2800G
PRESSURE
WASHERS

**OPERATING,
MAINTENANCE
INSTRUCTIONS
& ILLUSTRATED
PARTS LIST**

THE KENT COMPANY
P.O. Box 1665
2310 Industrial Parkway
Elkhart, IN 46515

TEL: (219) 293-8861
(800) 334-1083
~~(800) 642-6635 (Indiana)~~

FAX: (219) 295-8610

~~TELEX: 25-8991 KENT OO EKR~~

JANUARY, 1995

KENT TABLE OF CONTENTS

INTRODUCTION	3
IMPORTANT SAFETY WARNINGS	4-7
FIRE & VENTILATION PRECAUTIONS	4
SPRAY PRECAUTIONS	5
DETERGENT CLEANING PRECAUTIONS	6
MISCELLANEOUS SAFETY PRECAUTIONS	6
ADJUSTMENT PRECAUTIONS	7
SPECIFICATIONS	7
FEATURES DRAWINGS	
KW-2200G	8
KW-2800G	9
INSTALLATION & PREPARATION	10-13
SET-UP	10
ENGINE FUEL TANK	10
PUMP OIL LEVEL	10
NOZZLE ASSEMBLY	11
TRIGGER GUN	11
WATER SUPPLY	12
ATTIRE	12
HEAT DUMP VALVE	12
UNLOADER	13
PRE-START INSPECTION PROCEDURES	13
OPERATING INSTRUCTIONS	16-17
PRIMING THE PUMP	16
START-UP	16
CLEANING WITH DETERGENTS	17
SHUTDOWN	17
STORAGE & MAINTENANCE	18-19
SPECIFIC MAINTENANCE	18
GENERAL MAINTENANCE	19
WINTERIZING	19
TROUBLESHOOTING	20
PARTS LISTING	22-33
STATEMENT OF WARRANTY	BACK COVER

INTRODUCTION

Congratulations on the purchase of your new KENT pressure washer! You can be assured your KENT pressure washer was constructed and designed with quality and performance in mind. Each component has been rigorously tested to ensure the highest level of acceptance.

This operator's manual was compiled for your benefit. By reading and following the simple safety, installation, operation, maintenance and troubleshooting steps described in this manual, you will receive years of trouble free operation from your new KENT pressure washer. The contents of this manual are based on the latest product information available at the time of publication. KENT reserves the right to make changes in price, color, materials, equipment, specifications or models at any time without notice.

! IMPORTANT !

These paragraphs are surrounded by a "SAFETY ALERT BOX". This box is used to designate and emphasize Safety Warnings that must be followed when operating this pressure washer. Accompanying the Safety Warnings are "signal words" which designate the degree or level of hazard seriousness. The "signal words" used in this manual are as follows:

DANGER: Indicates an imminently hazardous situation which, if not avoided, WILL result in death or serious injury.

WARNING: Indicates a potentially hazardous situation which, if not avoided, COULD result in death or serious injury.

CAUTION: Indicates a potentially hazardous situation which, if not avoided MAY result in minor or moderate injury.



The symbol set to the left of this paragraph is a "Safety Alert Symbol". This symbol is used to call attention to items or procedures that could be dangerous to you or other persons using this equipment.

ALWAYS PROVIDE A COPY OF THIS MANUAL TO ANYONE USING THIS EQUIPMENT. READ ALL INSTRUCTIONS BEFORE OPERATING THIS PRESSURE WASHER AND ESPECIALLY POINT OUT THE "SAFETY WARNINGS" TO PREVENT THE POSSIBILITY OF PERSONAL INJURY TO THE OPERATOR.

Once the unit has been uncrated, immediately write in the serial number of your unit in the space provided below.

SERIAL NUMBER _____

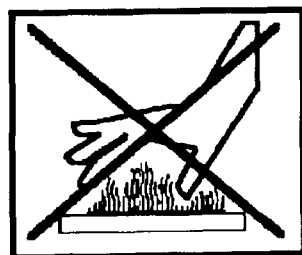
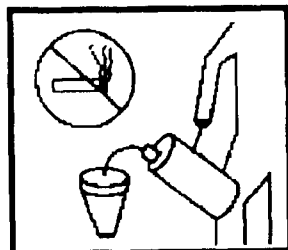
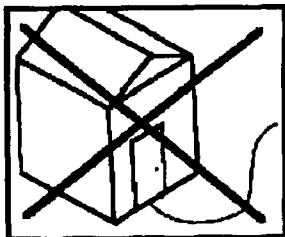
Inspect for signs of obvious or concealed freight damage. If damage does exist, file a claim with the transportation company immediately. Be sure that all damaged parts are replaced and that the mechanical problems are corrected prior to operation of the unit. If you require service, contact KENT Customer Service.

CUSTOMER SERVICE
CALL OUR TOLL-FREE NUMBER
for the Sales or Service Center nearest you!
800-334-1083

Please have the following information available for all service calls:

1. Model Number
2. Serial Number
3. Date and Place of Purchase

! IMPORTANT SAFETY WARNINGS !



! FIRE & VENTILATION PRECAUTIONS:

1. This unit was designed for outdoor use only. NEVER operate this unit in an enclosed area. ALWAYS make certain there is adequate air (oxygen) for combustion as well as ventilation to prevent the presence of poisonous carbon monoxide gases. Beware of poorly ventilated areas or exhaust fans which can cause inadequate combustion or engine overheating.
2. NEVER operate this unit in the presence of flammable vapors or combustible dust, gases or other combustible materials. (A spark may cause an explosion or fire.) When servicing this machine, be especially careful to properly dispose of any flammable materials. DO NOT spray flammable liquids.
3. ENGINE FUEL TANK:
 - DO NOT SMOKE WHILE FILLING ENGINE FUEL TANK
 - NEVER fill the engine fuel tank while the unit is running or hot. Allow the engine to cool two minutes before refueling.
 - DO NOT refuel indoors or in a poorly ventilated area.
 - ALWAYS refuel slowly to avoid the possibility of spilled fuel which may cause a risk of fire.
4. DO NOT operate the unit if gasoline is spilled. Wipe unit clean and move the unit away from the spill. Avoid creating any ignition until the gasoline has evaporated.
5. DO NOT operate the unit without all covers in place.
6. NEVER run the engine with the governor disconnected, or operate at excessive speed.
7. Avoid contacting the engine muffler to prevent the possibility of burns.
8. DO NOT leave the unit unattended after shutdown until it is completely cooled down as described in the "SHUTDOWN" procedures listed on page 17 of this manual.
9. DO NOT store the unit near an open flame or any equipment such as a stove, furnace, water heater, etc., which utilizes a pilot light or devices which can create a spark.

IMPORTANT

The following is required by California State law, Section 4442 of the California Public Resources Code. Other states may have similar laws. Federal laws apply on federal lands.

A spark arrester must be added to the muffler of this engine if it is to be used on any forest covered, brush covered or grass covered unimproved land. The arrester must be maintained in effective working order by the operator.

See your engine or equipment dealer for spark arrester muffler options.

⚠ IMPORTANT SAFETY WARNINGS ⚠

⚠ SPRAY PRECAUTIONS:

⚠ DANGER ⚠

RISK OF INJECTION OR SEVERE CUTTING INJURY

KEEP CLEAR OF NOZZLE

DO NOT DIRECT DISCHARGE STREAM AT PERSONS OR PETS
THIS PRODUCT IS TO BE USED ONLY BY THOSE WHO HAVE READ
AND UNDERSTOOD THE CONTENTS OF THIS MANUAL.

1. KEEP AWAY FROM THE SPRAY:

- Because of the high pressure and velocity of the spray, fluids can penetrate the skin, causing serious injury.
- Never point the gun at yourself or anyone else. Never put your hand, fingers or body directly over the spray nozzle. Always keep operating area clear of all persons. Use **extreme** caution when operating near children.
- If an accident does occur and the spray appears to have penetrated the skin, **SEEK EMERGENCY MEDICAL CARE. DO NOT TREAT AS A SIMPLE CUT.** If you are using cleaning agents, be prepared to tell a physician exactly what kind.

2. ALWAYS wear protective goggles when operating the unit to shield the eyes from flying debris and detergents. Other protective equipment such as rubber suits, gloves and respirators are advisable, especially when using cleaning detergents. Use **extreme** caution when operating near children.

3. Stay alert-watch what you are doing. Do not operate the unit when fatigued or under the influence of alcohol or drugs.

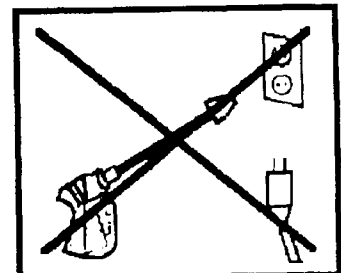
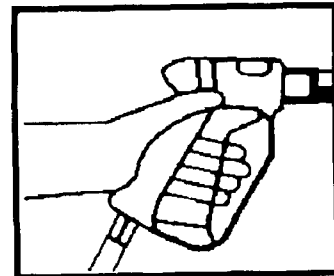
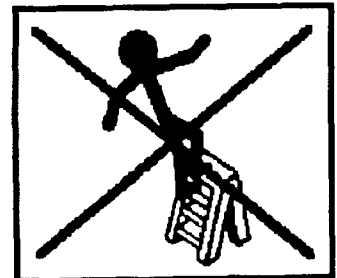
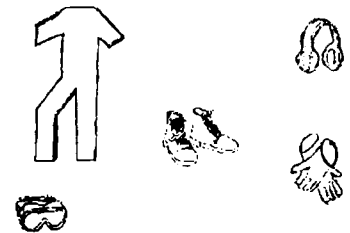
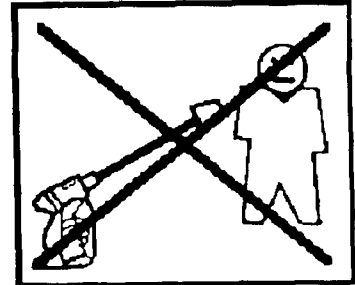
4. NEVER squeeze the trigger unless securely braced. The thrust from the water traveling through the nozzle may be powerful enough to cause the operator to lose balance if unprepared. DO NOT overreach or stand on unstable support. Wet surfaces can be slippery, wear protective foot gear and keep good footing and balance at all times. NEVER trigger the gun while on a ladder or roof.

5. DO NOT direct spray toward fragile materials such as glass. Shattering could result in serious injury.

6. ALWAYS hold on firmly to the gun/wand assembly when starting and operating the unit. Failure to do so can cause the wand to fall and whip dangerously. NEVER operate the gun with the trigger wired in the open position. To prevent accidental discharge, the trigger gun should be securely locked when not in use.

7. DO NOT direct spray on or into electrical installations of any kind! This includes electrical outlets, light bulbs, fuse boxes, transformers, the unit itself, etc. Severe electrical shock may occur.

8. Even after you shut off the unit, there is high pressure water left in the pump, hose and gun until you release it by triggering the gun. Before removing the spray nozzle or servicing the unit, ALWAYS shut off the unit and trigger the gun to release trapped pressure.



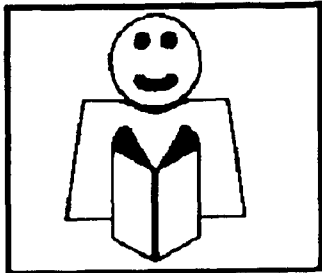
⚠ IMPORTANT SAFETY WARNINGS ⚠

⚠ DETERGENT CLEANING PRECAUTIONS:

1. DO NOT use solvents or highly corrosive detergents or acid type cleaners with this pressure washer. Use only mild detergents.
2. KNOW YOUR DETERGENTS! Be prepared to tell a physician exactly what you are using in the event of an emergency. Read the Material Safety Data Sheet (MSDS) provided with your detergent and all detergent labels. Follow all appropriate instructions regarding preparation use, safety and transportation. Keep ALL detergents out of the reach of children.
3. DO NOT use this pressure washer to dispense hazardous detergents.
4. DO NOT alter the detergent injection feature in any manner not prescribed in this manual. Use only genuine KENT replacement parts for necessary repairs.
5. Avoid working on hot surfaces or in direct sunlight to minimize the chances of the detergent drying, which may result in damaging painted surfaces. Be certain to rinse a small section at a time.

⚠ MISCELLANEOUS SAFETY PRECAUTIONS:

1. NEVER ALLOW CHILDREN OR ADOLESCENTS TO OPERATE THIS UNIT!
2. Read and follow all handling, operations, maintenance and safety instructions listed in this manual and the Engine Operator's manual that accompanies this unit, and provide such information to ANYONE who will be operating this unit.
3. When connecting the water inlet to the water supply mains, local regulations of your water company must be observed. In some areas the unit must not be connected directly to the public drinking water supply. This is to ensure that there is no feedback of the detergents into the water supply. (Direct connection is permitted if a back flow preventer is installed.)
4. DO NOT allow any part of your body or the high pressure hose to make contact with the muffler. Avoid dragging the hose over an abrasive surface such as cement. This causes wear and eventual rupturing.
5. High pressure hoses should be inspected daily for signs of wear. If evidence of failure exists, promptly replace all suspect hoses to prevent the possibility of injury from the high pressure spray. If a hose or fitting is leaking, NEVER place your hand directly on the leak.
6. DO NOT operate the unit if you see any fuel oil, pump oil or water leaks from the machine. DO NOT resume operation until the unit has been inspected and repaired by a qualified service person.
7. NEVER run the unit with the governor disconnected or operate at excessive speeds.
8. To reduce the risk of injury, maintain a safe distance for persons while operating this unit. Close supervision is necessary when operating the unit near children.
9. DO NOT leave pressurized unit unattended. Shut off the unit and release trapped pressure before leaving.
10. DO NOT move the unit by pulling on the hose.



! IMPORTANT SAFETY WARNINGS !

! ADJUSTMENT PRECAUTIONS:

1. NEVER alter or modify the equipment, be sure any accessory items and system components being used will withstand the pressure developed. Use ONLY genuine KENT parts for repair of your pressure washer. Failure to do so can cause hazardous operating conditions and will void warranty.
2. NEVER make adjustments to the machinery while it is connected to the engine without first removing the ignition cable from spark plug. Turning the machinery over by hand during adjustment or cleaning might start the engine and machinery with it, causing serious injury to the operator.
3. Know how to stop the pressure washer and bleed pressures quickly. Be thoroughly familiar with controls.
4. Before servicing the unit; turn the unit off, relieve the water pressure, and allow the unit to cool down. Service in a clean, dry, flat area. Block the wheels to prevent the unit from moving.
5. Follow the maintenance instructions specified in this manual.

! ! SAVE THESE INSTRUCTIONS ! !

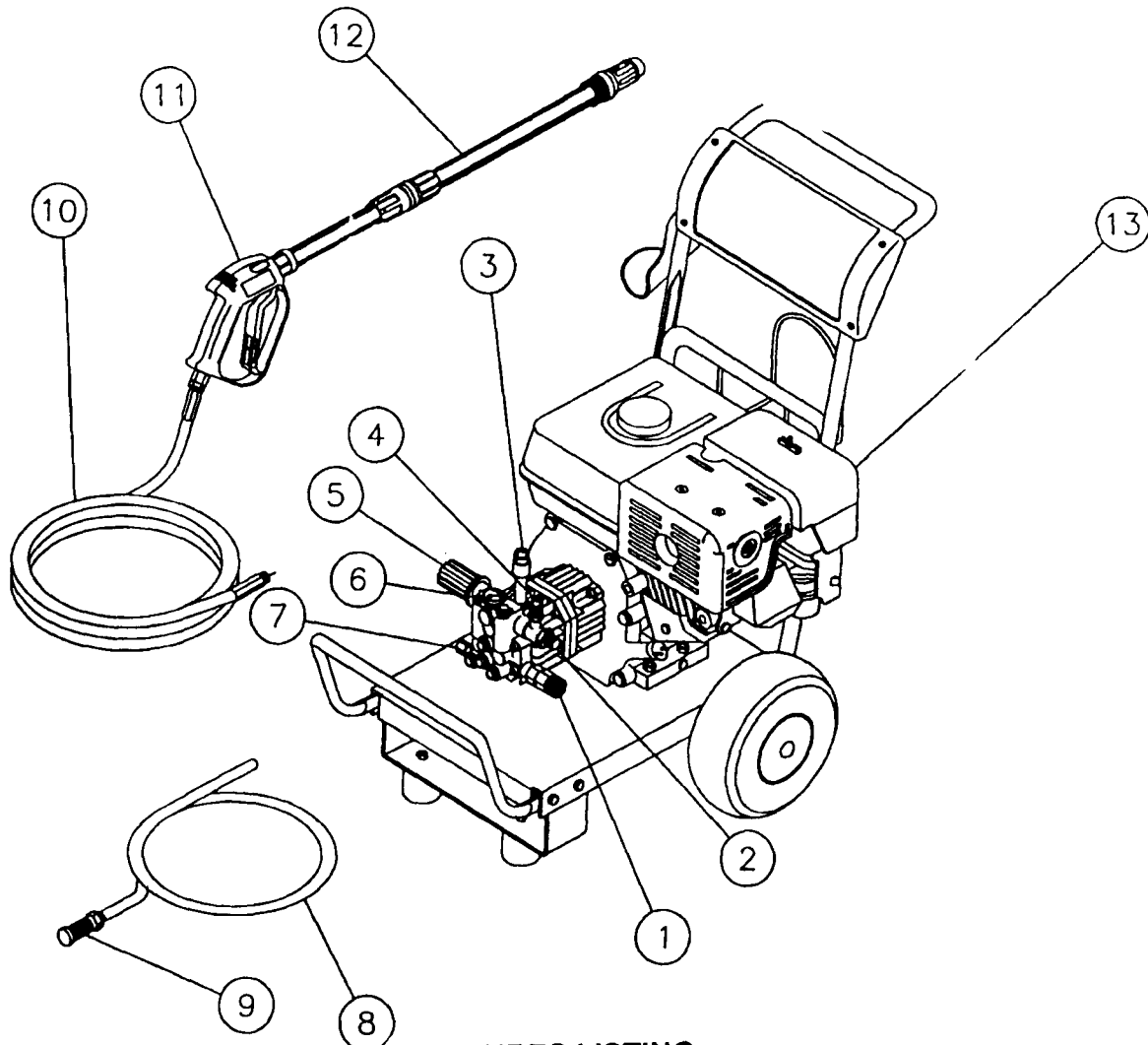
EQUIPMENT SPECIFICATIONS

Model Number	KW-2200G	KW-2800G
Operating Pressure	2200 PSI	2800 PSI
Flow Rate (GPM)	2.4	3.3
Maximum Water Inlet Temperature (F°)	135°	135°
Gasoline Engine (Standard)	Honda	Honda
Engine Horsepower	5.5	9.0
Engine (Honda) Model Number	GX160KI	GX270KI
Nozzle Angle	0°-65° Adjustable	0°-65° Adjustable
Lance Length (Inches)	36	36
Engine Oil	SAE 10W40	SAE 10W40
Pump Style	Axial Piston	Ceramic Piston
Pump Oil	SAE 30 Non-Detergent	SAE 30 Non-Detergent
Pressure Hose Length (Feet)	23	40
Fuel Tank Capacity (Gallons)	0.97	1.60
Fuel Consumption (GPH)	0.53	0.75
Unit Length (Inches)	34	34
Unit Width (Inches)	23	23
Unit Height (Inches)	29	29
Unit Weight (Pounds)	83	155
Unit Shipping Weight (Pounds)	93	165

FIGURE 1
KW-2200G

NOTE: This drawing is referenced through-out the manual. Locations of specific items will be noted by listing the ITEM # in parenthesis.

Example: Pump Oil Fill = (3)



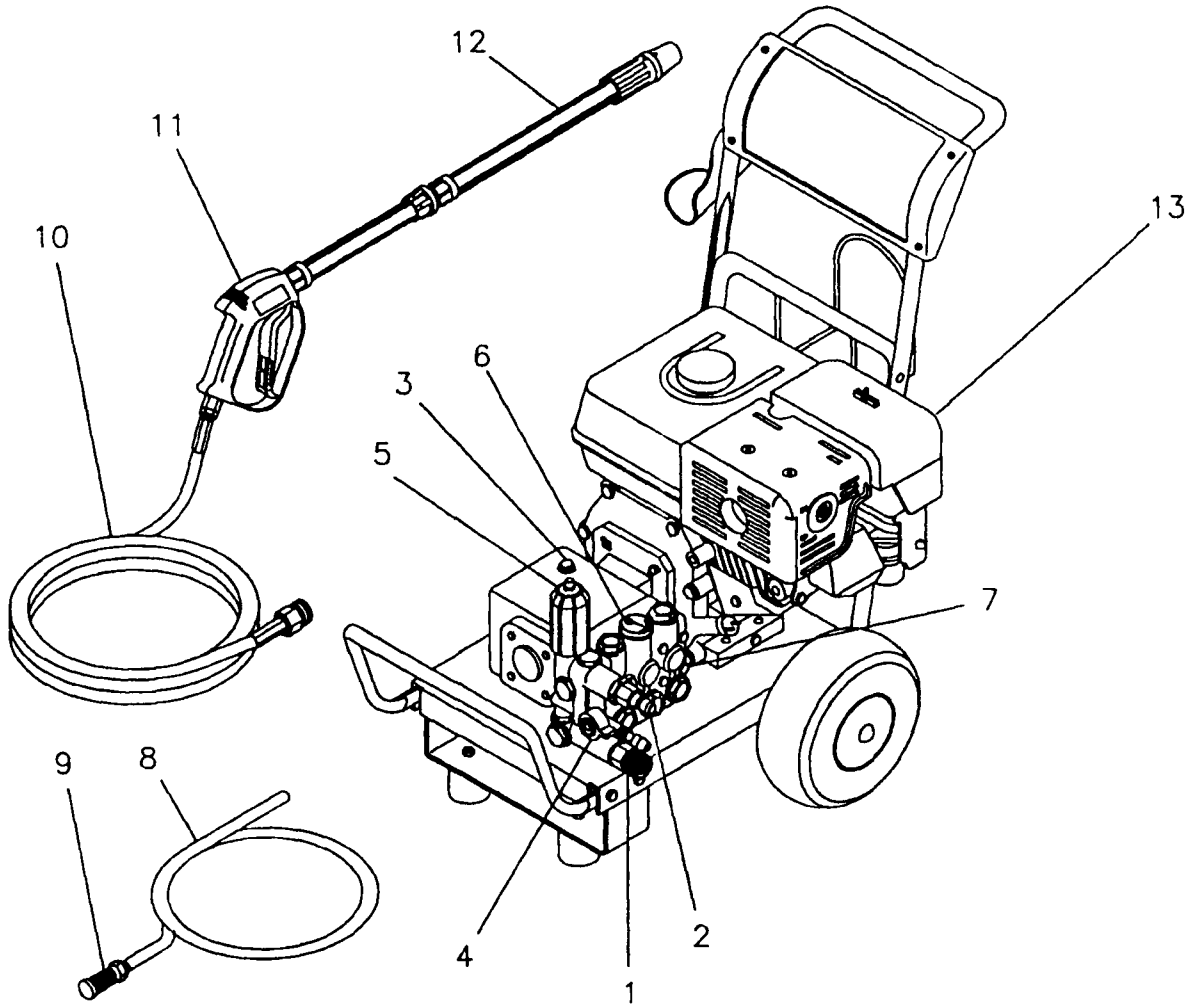
FEATURES LISTING

1. Water Inlet with Strainer
2. Water Outlet
3. Pump Oil Fill
4. Adjustable Detergent Injector
5. Adjustable Unloader
6. Pressure Gauge
7. Heat Dump Valve
8. Detergent Hose
9. Detergent Strainer
10. High Pressure Hose
11. Gun Assembly
12. Nozzle Assembly
13. Honda 5.5 HP Engine

FIGURE 2
KW-2800G

NOTE: This drawing is referenced through-out the manual. Locations of specific items will be noted by listing the ITEM # in parenthesis.

Example: Pump Oil Fill = (3)



FEATURES LISTING

- 1 Water Inlet with Strainer
- 2 Water Outlet
- 3 Pump Oil Fill
- 4 Adjustable Detergent Injector
- 5 Adjustable Unloader
- 6 PressureGauge
- 7 Heat Dump Valve
- 8 Detergent Hose
- 9 Detergent Strainer
- 10. High Pressure Hose
- 11. Gun Assembly
- 12 Nozzle Assembly
- 13 Honda 9.0 HP Engine

INSTALLATION & PREPARATION



DANGER

RISK OF EXPLOSION OR FIRE!

DONOT PLACE UNIT IN AN AREA WHERE FLAMMABLE GAS VAPORS MAY BE PRESENT. A SPARK COULD CAUSE AN EXPLOSION OR FIRE!



WARNING

RISK OF ASPHYXIATION!

DO NOT OPERATE IN AN ENCLOSED AREA. USE THIS PRODUCT ONLY IN WELL VENTILATED AREAS!

THE EXHAUST FROM THE ENGINE CONTAINS CARBON MONOXIDE, A POISONOUS, ODORLESS AND INVISIBLE GAS. BREATHING THIS GAS CAN CAUSE SERIOUS INJURY, ILLNESS & POSSIBLE DEATH.



DANGER

RISK OF FIRE!

DO NOT SMOKE WHILE FUELING!

DO NOT FILL THE FUEL TANK WHILE UNIT IS RUNNING OR HOT. ALLOW UNIT & ENGINE TO COOL FOR TWO MINUTES BEFORE REFUELING.

DO NOT FILL FUEL TANK TO POINT OF OVERFLOWING. ALLOW APPROXIMATELY 1/4" OF TANK SPACE FOR FUEL EXPANSION.



WARNING

RISK OF EXPLOSION OR FIRE!

ALWAYS STORE FUEL AWAY FROM THE WASHER WHILE THE UNIT IS RUNNING OR HOT.

SET-UP:

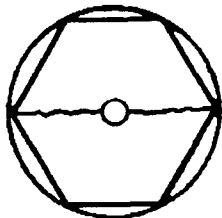
1. This unit should only be placed on a level surface to ensure proper lubrication for the engine and water pump while operating. Do not allow the unit to be exposed to rain, snow or freezing temperatures. NEVER spray water directly on the unit!
2. Be certain to block the wheels to prevent the unit from moving while operating.

ENGINE FUEL TANK:

1. Review "Fire & Ventilation Precautions" pg. 4, before fueling.
2. Locate the Safety Decals on your unit and heed their warnings.
3. A minimum of 86 octane fuel is recommended for use with this unit. **DO NOT MIX OIL WITH GASOLINE.**
4. Purchase fuel in quantities that may be used within 30 days. Use of clean, fresh lead free gasoline is recommended. Leaded gasoline may be used if lead-free is unavailable. **DO NOT** use gasoline containing methanol or alcohol.
5. Check the engine oil level before starting the engine. (See Engine manual.)
6. Fill the fuel tank according to accompanying engine manual instructions.
7. Occasional carburetor and choke adjustments will be necessary for the engine. Refer to the engine manual supplied with this unit for proper adjustment procedures.
8. **Review the engine manual accompanying this pressure washer for correct engine start-up and maintenance procedures.**

PUMP OIL LEVEL:

PROPER OIL LEVEL



1. Before initial use, ensure the oil dipstick is inserted into the pump. Because of varying shipping requirements, the pump may need to be shipped with an oil travel plug instead of the dipstick in the pump. If your pump has been shipped with an oil travel plug, you will need to remove it and replace the plug with the oil dipstick provided with the unit.
2. Once properly installed, check the oil sight glass on the pump crankcase. Make certain the oil is at the correct level indicated by the dot on the sight glass. (Correct level shown at left.) If the level appears to be low, use SAE 30 non-detergent oil.

INSTALLATION & PREPARATION

NOZZLE ASSEMBLY:

The Adjustable Spray Pattern Nozzle (with lance) has two functions: NOTE Nozzle assembly should NOT be connected to the gun assembly at this time

- 1 Selections of high and low pressure can be achieved by pulling the cover at the end of the wand "TOWARD" yourself for the High Pressure setting, and pushing the cover "AWAY" from yourself for Low Pressure and detergent application
- 2 The spray pattern can be adjusted from 0° to 60° by rotating the nozzle cover at the end of the wand in a clockwise and counter-clockwise direction



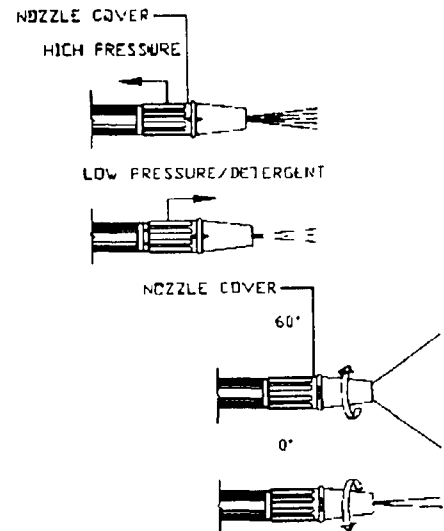
WARNING

RISK OF INJECTION CAUSING SEVERE INJURY!

NEVER LOOK DIRECTLY AT THE NOZZLE ORIFICE UNLESS IT IS DISCONNECTED FROM THE GUN/WAND ASSEMBLY!

WHEN USING THE ADJUSTABLE NOZZLE, NEVER ADJUST THE SPRAY PATTERN WHILE THE TRIGGER GUN IS OPEN!

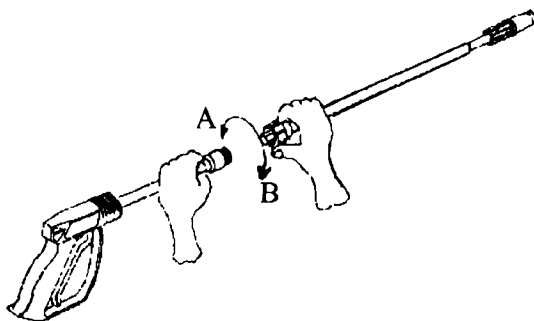
ADJUSTABLE NOZZLE



TRIGGER GUN:

- 1 Be certain the trigger gun is locked in the "OFF" position. See *WARNING*, left
2. The nozzle assembly should be disconnected from the gun assembly at this time by unscrewing the nozzle/lance assembly from the gun/lance assembly

ADJ. NOZZLE CONNECTION



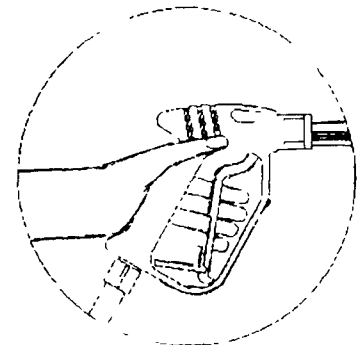
DIRECTION "A"=CONNECTION / "B"=DIS-CONNECTION



WARNING

RISK OF SEVERE INJURY!

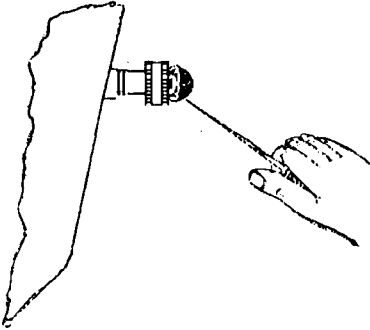
THE TRIGGER GUN SHOULD ALWAYS BE LOCKED IN THE OFF POSITION WHEN NOT IN USE!



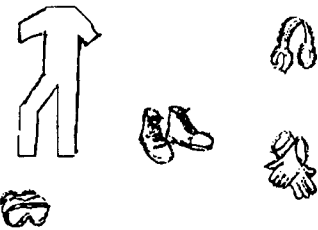
INSTALLATION & PREPARATION

WATER SUPPLY:

CHECK WATER INLET STRAINER



1. Select a water supply hose which is a quality grade of garden hose measuring at least 3/4" ID and no longer than 50 feet.
2. Check the water inlet strainer (1) to ensure it is clean and free of any obstructions. Using a screwdriver, remove the strainer from the unit. Clean, or replace with KENT #M19-0001 if necessary.
3. Connect one end of the water supply hose to the water inlet (1) of the unit. Connect the other end of the hose to your pressurized water supply. *NOTE:* If a non-pressurized water supply is being used (i.e. well water) it is highly recommended that an additional water strainer (KENT #M851-0207) be added to the water inlet to help reduce mineral content in the water. Be certain to clean both strainers before starting your pressure washer (KENT #M851-0207 & Ref. #1).
4. Quick-connect the high pressure discharge hose (10) to the water outlet (2) of the unit. Be certain the quick connect is securely locked.
5. Be certain all connections are securely tightened.
 - a. Water supply hose to the Water Inlet on the unit.
 - b. Water supply hose to Pressurized Water Supply.
 - c. High Pressure Discharge Hose to Water Outlet on the unit.
6. Follow the incoming water requirements listed below:
 - a. Water pressure must be a minimum of 20 pounds per square inch (PSI) and a maximum of 125 PSI. (A typical outdoor faucet will generally supply this PSI if turned completely "ON".)
 - b. Incoming GPM must be approximately one gallon more than the outgoing GPM stated on the pressure washer nameplate. (You can check GPM by timing how long it takes to fill a 5 gallon container.)
 - c. Incoming water temperature must not exceed 125°F. Excessive pump damage may result if the water temperature exceeds this acceptable level.



ATTIRE:

1. Proper attire is essential to your safety. It is advised to utilize whatever means necessary to protect eyes, ears, and skin. Additional safety attire (such as respiratory mask) may be required when using detergent cleaning agents with this washer.

HEAT DUMP VALVE:

To ensure the water temperature does not exceed acceptable levels, never allow the pressure washer to operate in the bypass mode (with the unit running and the trigger gun closed) for more than three minutes.

An additional safety feature; a "heat dump valve" has been added to this unit to protect the pump. It may begin to open and release water if the water temperature in the pump has exceeded 140°F.

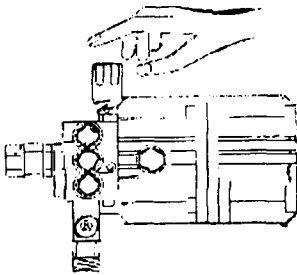
The "heat dump valve" will alleviate this condition by releasing excess hot water from the system. This will allow fresh, cool water to enter the system, therefore preventing premature packing seal failure in the pump.

INSTALLATION & PREPARATION

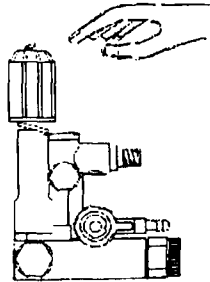
UNLOADER:

1. The unloader valve on your machine is equipped with an adjustment knob (5) to adjust the pressure. Should less pressure be required, simply turn the adjustment knob counter-clockwise. To set back to maximum, turn adjustment knob completely clockwise. **DO NOT OVERTIGHTEN!**

KW-2200G UNLOADER



KW-2800G UNLOADER



CAUTION

RISK OF UNIT DAMAGE!

DO NOT OVERTIGHTEN THE UNLOADER. BREAKAGE WILL RESULT IN IMMEDIATE LOSS OF WATER PRESSURE AND COSTLY REPAIRS.

PRE-START INSPECTION PROCEDURES:

1. Before starting the unit, perform the following procedures:
 - a. Check the oil level in the pump and engine.
 - b. Inspect the inlet water strainer.
Clean or replace if necessary.
See "Water Supply", #2, pg. 12.
 - c. Check all hose connections to ensure they are securely tightened.
See "Water Supply", #5, pg. 12.
 - d. Inspect for system fuel leaks.
If a fuel leak is found, **DO NOT START UNIT!**
See "Fire & Ventilation Precautions", #2 and #4, pg. 4.
Be sure that all damaged parts are replaced and that the mechanical problems are corrected prior to operation of the unit.
If you require service, contact KENT Customer Service.
 - e. Inspect high pressure hoses for kinking, cuts and leaks.
If a cut or leak is found, **DO NOT USE HOSE!**
Replace hose before starting unit.
See "Miscellaneous Safety Precautions" #5, pg. 6.
Be sure that all damaged parts are replaced and that the mechanical problems are corrected prior to operation of the unit.
If you require service, contact KENT Customer Service.

END OF PREPARATION INSTRUCTIONS

NOTES

WARNING

**THE FOLLOWING PAGES CONTAIN
OPERATING AND MAINTENANCE
INSTRUCTIONS**

**DO NOT ATTEMPT TO OPERATE THIS
PRESSURE WASHER
UNTIL YOU HAVE READ AND UNDERSTOOD
ALL SAFETY PRECAUTIONS AND
INSTRUCTIONS LISTED IN THIS MANUAL.**

**INCORRECT OPERATION OF THIS UNIT CAN
CAUSE SERIOUS INJURY!!**

**DO NOT ALTER OR MODIFY THIS
EQUIPMENT IN ANY MANNER!**

OPERATING INSTRUCTIONS

PRIMING THE PUMP:

1. Lay the high pressure hose out to release any kinks. Water flow will tighten the hose, creating tight loops if the hose is not straight.
2. Securely connect the gun assembly to the high pressure hose. (NOTE: The nozzle assembly should NOT be connected to the gun assembly at this time. See "Trigger Gun", pg. 11)
3. With the trigger gun locked in the "OFF" position, turn the water supply completely on. Pointing the gun in a safe direction, unlock the trigger gun and squeeze the trigger.
4. Low pressure water will begin flowing from the hose/gun assembly. This allows the unit to prime and purge any air from the system. The unit is primed when water flow is uninterrupted by air.
5. Once the unit is primed, release the trigger and lock the gun in the "OFF" position. Securely connect the nozzle assembly. (See "Nozzle Assembly" and "Trigger Gun", pg. 11)



DANGER

RISK OF INJECTION CAUSING SEVERE INJURY!

**KEEP CLEAR OF NOZZLE!
NEVER PLACE HAND OR FINGERS IN FRONT OF NOZZLE!**

DO NOT DIRECT DISCHARGE STREAM AT PEOPLE OR PETS!

BE CERTAIN THE NOZZLE IS SECURELY CONNECTED TO THE WAND TO PREVENT ACCIDENTAL DISCHARGE!



CAUTION

RISK OF DAMAGE.

DO NOT ALLOW SPRAY PATTERN TO REMAIN ON A FIXED AREA FOR AN EXTENDED PERIOD OF TIME. POSSIBLE DAMAGE MAY OCCUR TO THE AREA.

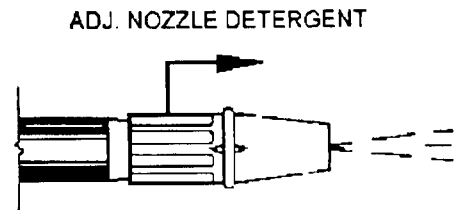
START-UP:

1. Refer to the "Safety Precautions" pgs. 4-7 before starting the unit.
2. Locate the Safety Decals on your unit and heed their warnings.
3. With the gun locked in the "OFF" position, point the trigger gun away from yourself or anyone else.
4. Disengage the safety lock-off on the gun and squeeze the trigger. Low pressure water will begin flowing from the nozzle.
5. **BE CERTAIN the trigger gun remains in an open position while starting the engine.** Brace yourself as the gun will kick-back from the high pressure created by the pump once the engine has started.
6. Put your foot on the frame or wheel to steady the unit during engine start-up. (Refer to the engine manual accompanying this pressure washer for the correct procedures needed to start the engine.)
7. Once the engine has started, perform the following procedures:
 - a. Inspect for system oil leaks and fuel leaks.
If a fuel leak is found, **TURN UNIT OFF IMMEDIATELY!**
See "Fire & Ventilation Precautions", #2 and #4, pg. 4.
Be sure that all damaged parts are replaced and that the mechanical problems are corrected prior to operation of the unit.
If you require service, contact KENT Customer Service.
 - b. Inspect high pressure hoses for kinking, cuts and leaks.
If a cut or leak is found, **DO NOT TOUCH HOSE AT LEAK!!!**
TURN UNIT OFF IMMEDIATELY! Replace hose before re-starting the unit. See "Miscellaneous Safety Precautions" #5, pg. 6. Be sure that all damaged parts are replaced and that the mechanical problems are corrected prior to operation of the unit.
If you require service, contact KENT Customer Service.
8. Trigger the gun several times and try adjusting the spray pattern. **Be certain** to LOCK the trigger gun in the "OFF" position whenever moving the adjustable nozzle OR changing quick-connect nozzles. **NEVER** look directly into the nozzle! High pressure water creates a risk of severe injury!
9. Because your pressure washer delivers a high pressure spray and a variety of spray patterns, there are many cleaning jobs that can be done without the use of detergents. If a cleaning agent is required, see "Cleaning With Detergents" pg. 17 for the correct procedures.

OPERATING INSTRUCTIONS

CLEANING WITH DETERGENTS:

1. Refer to "Detergent Cleaning Precautions" pg. 6 before working with detergents. Be certain to wear protective safety attire as stated on pg. 12.
2. Prepare detergent solution according to label directions.
3. Connect the detergent hose to the unit as shown in Figure 1, pg. 8 or Figure 2, pg. 9.
4. Adjust the amount of detergent desired by locating the adjustment knob at the end of the clear vinyl hose near the pump head. Turn the knob completely counter-clockwise to set at the maximum siphon rate.
5. Immerse the strainer into the detergent solution to allow detergent to siphon.
6. Be certain the water supply is completely turned "ON".
7. With the trigger gun locked in the "OFF" position, push the collar at the end of the wand away from the trigger gun.
8. To apply solution, unlock the trigger gun and squeeze the trigger. In a few moments a detergent/water mixture will exit the low pressure nozzle. Start spraying the lower portion of the surface being cleaned and move up, using long overlapping strokes. Applying from the bottom up helps avoid streaking. Allow to soak briefly. DO NOT allow detergent solution to dry on the surface.
9. To rinse; lock the trigger gun in the "OFF" position and pull the collar at the end of the wand toward the gun. Unlock the trigger gun and spray. It will take about 30 seconds to purge all detergent from the line. For best rinsing results, start at the top and work down.
10. Siphon a gallon of water through the low pressure detergent injection system after each use. This prevents the possibility of corrosion or detergent residue causing mechanical problems during the next use.



SHUT-DOWN:

1. Turn engine "OFF" as directed in the Engine Manual.
2. Turn the water supply "OFF".
3. Pointing the gun in a safe direction, trigger gun momentarily to relieve any trapped pressure.
4. Once pressure is relieved, disconnect the nozzle assembly.
5. Drain gun, wand and hoses. Once drained, disconnect hoses.
6. Wipe unit clean and store with gun, wand and hoses in a safe area.

STORAGE & MAINTENANCE

SPECIFIC MAINTENANCE:

ENGINE: The engine instructions that accompany your unit detail specific procedures for maintenance of the engine. Following the engine manufacturer's recommendations will extend engine work life.

PUMP: Change the pump oil after the first 25 hours of operation. After initial change, 250 hour intervals are recommended. If oil appears dirty or milky, changes may be required in greater frequency. Use SAE 30 non-detergent oil and fill only to the dot on the oil sight glass. DO NOT overfill.

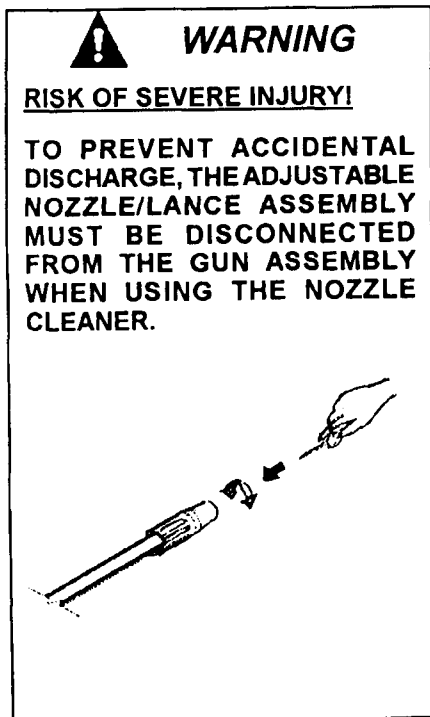
WATER STRAINER:

Periodic cleaning of the water strainer will help prevent pump problems. As a strainer becomes obstructed, it restricts proper flow of water to the pump. This can result in cavitations which will cause premature failure of pump packings. Using a screw driver, remove the screen; clean or replace.

NOZZLES:

Nozzle orifices should be kept clean and free of obstructions. If the nozzle becomes clogged, the pump pressure will increase causing risk of pump damage. Therefore, should the nozzle become clogged, the nozzle orifice must be cleaned immediately. Follow the procedure listed below to clean nozzle orifice: (See *WARNING*, left.)

1. Disconnect the wand from the gun.
2. Insert the nozzle cleaner (supplied with unit) into the nozzle and rotate.
3. Flush the nozzle with water.
4. Reconnect the wand and gun assembly.
5. Turn the unit "ON". Point the gun in a safe direction and trigger the gun to begin spraying. Adjust spray pattern to 0°. If spray pattern is still distorted, repeat steps 1-4. If you are unable to thoroughly clean the nozzle using this procedure, then the nozzle must be replaced.



STORAGE & MAINTENANCE

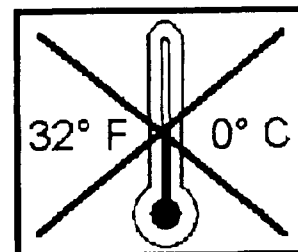
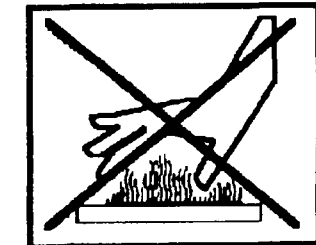
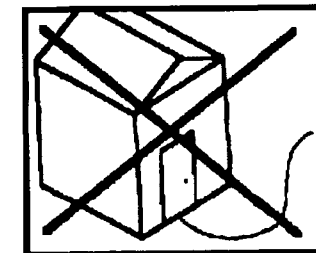
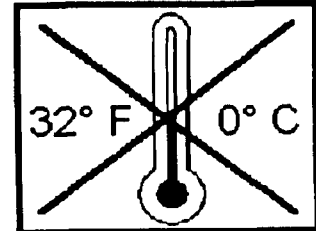
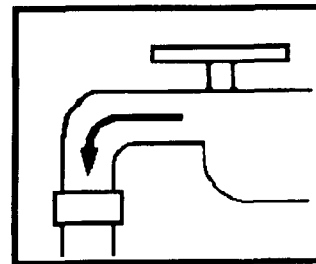
GENERAL MAINTENANCE:

1. Never allow the unit to operate without incoming water line attached and the water supply turned all the way on. Incoming water pressure should NOT exceed 125 PSI and incoming water temperature should not exceed 125°F.
2. Do not allow unit to operate in bypass mode (with trigger closed) for more than three minutes without triggering the gun. Failure to follow this simple rule can cause premature failure of pump packing seals, resulting in costly pump repair.
3. Never spray water directly on the unit or store the unit outdoors where it can be exposed to rain or other adverse weather conditions.
4. Do not store unit in freezing environment. This can cause "lock-up" conditions in the water pump. Never pour hot water on a frozen pump; let pump thaw in a warm place. If storage in freezing conditions is necessary, follow the winterizing procedures outlined below.
5. Never pump acids, alkaline, abrasive fluids or solvents through the unit. Due to the unknown and often corrosive characteristics of many detergents commonly used in the pressure washer cleaning industry, it is recommended to use only KENT detergents with this unit.
6. Do not make repairs while the unit is running.
7. Do not operate the unit in places with insufficient ventilation. Do not operate the unit if there is evidence of oil or gasoline leaks.
8. Be cautious when using the straight narrow stream. It is not recommended for use on painted or wood surfaces, OR items attached with adhesive backings.
9. Be cautious to keep all hoses away from the muffler or gasoline engine to prevent the possibility of bursting. Keep clear of the engine and muffler to prevent the possibility of burns.
10. Always follow the "SHUT-DOWN" procedures outlined in this manual.

WINTERIZING:

1. Always store your unit in an area where the temperature will not fall below 32°F (0°C). The pump in this unit may be permanently damaged if frozen. **FREEZE DAMAGE IS NOT COVERED BY WARRANTY.** If you must store your unit in an area where the temperature may fall below 32°F, you can protect your unit from the chance of damage by following the procedure outlined below.

1. Gather the following items:
 - a. Blow-down kit #M852-0066.
 - b. Air line with air chuck. (Portable air tanks are available at most rental yards.)
2. Procedure:
 - a. Ensure the water supply hose is disconnected from the water inlet (1) of the unit, and the nozzle assembly is disconnected from the wand assembly.
 - b. Assemble the blowdown valve and connect it to the water inlet of the unit.
 - c. Point the trigger gun in a safe direction and squeeze the trigger. While trigger is open, attach the air line to the blowdown valve to blow water from the system.
 - d. Continue blowing for approximately three minutes.
 - e. Detach the air line and release the trigger gun.
 - f. Remove the blowdown valve from the unit inlet.
 - g. Follow the engine storage instructions listed in the engine manual supplied with this unit.
 - h. Store the hose, gun and wand with the unit in a safe area.

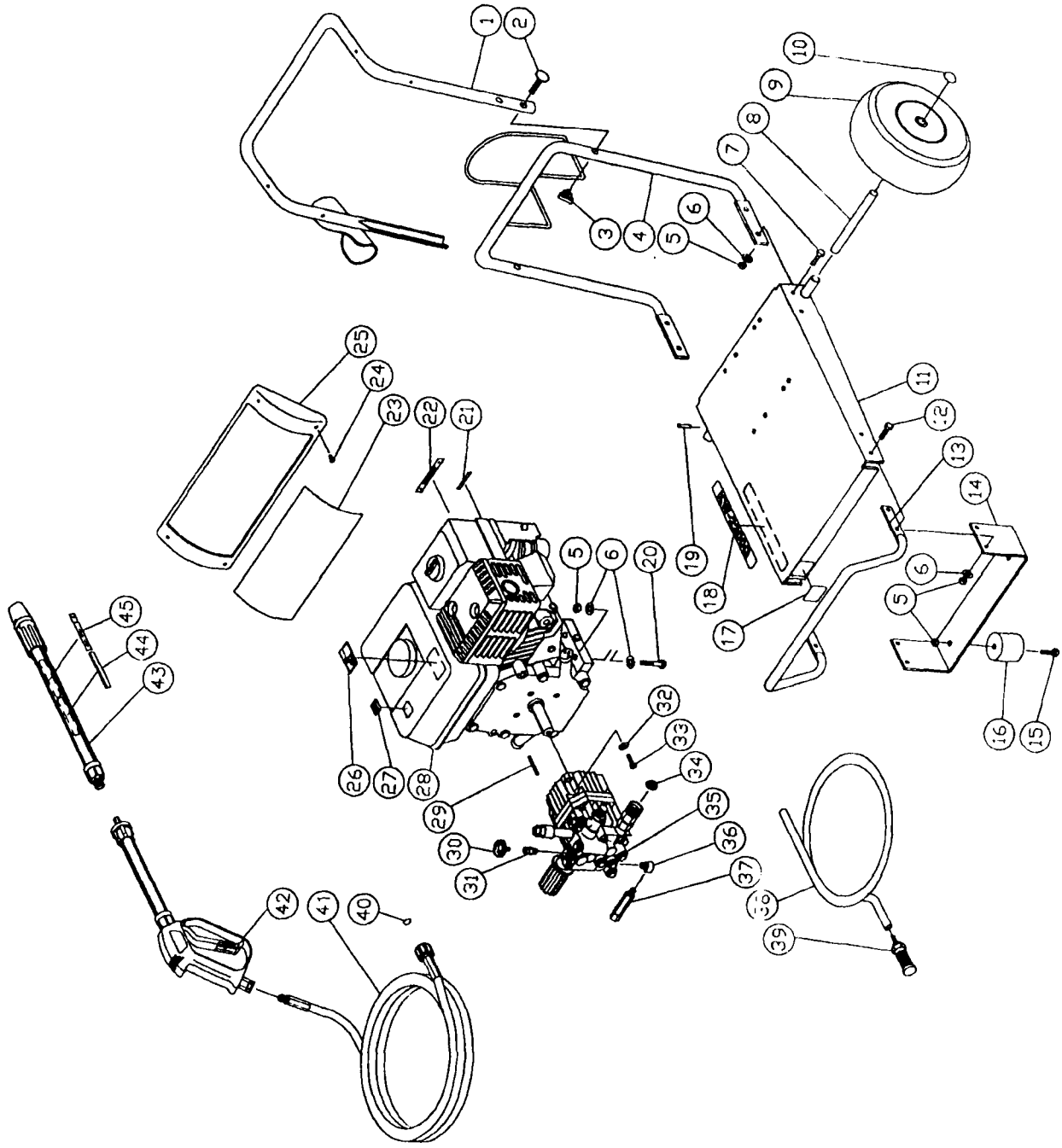


TROUBLESHOOTING

SYMPTOM	PROBABLE CAUSE	REMEDY
No discharge at nozzle when trigger mechanism is squeezed.	Inadequate water supply.	Ensure hose is 3/4" diameter and incoming water supply is turned on.
Low or fluctuating pressure.	Kink in water inlet hose or in high pressure discharge hose.	Remove kink.
	Water inlet screen obstructed.	Remove screen, clean or replace.
	Pump sucking air. (Prime eliminated)	Tighten all water intake connections Eliminate leaks in intake line.
	Not in high pressure mode.	Pull collar toward the gun to engage.
	Obstructed or worn spray nozzle.	Remove and clean, OR Replace.
		Bypass valve not operating correctly.
Water flows from the nozzle when the trigger gun is locked in the "OFF" position.	Gun is malfunctioning.	DO NOT USE!!! Contact KENT Customer Service.
Detergent will not siphon into Low Pressure Detergent mode.	Detergent strainer is not completely submerged in detergent solution.	Check, submerge if necessary.
	Detergent strainer obstructed.	Inspect, clean or Replace.
	Detergent hose cut, obstructed or kinked.	Inspect, clean or Replace.
	Detergent adjusting knob turned to closed position.	Open adjusting knob. Refer to "Cleaning with Detergents" pg. 17
	Not in Low Pressure mode.	Push collar away from the gun.
	Nozzle assembly is plugged.	Clean or replace.
	Too many high pressure hose extensions attached to the water outlet.	Use one extension maximum.
		Ball & Spring in Venturi stuck.
Water flows back into detergent container.	Ball & Spring in Venturi reversed, missing or corroded.	Remove, clean OR Replace.
Water is leaking from the "Heat-Dump Valve".	Water temperature is too high.	Do not allow unit to operate in the bypass mode (with trigger gun closed) for more than three minutes.
Oil appears milky or foamy.	Water in oil.	Change pump oil. Fill to proper level.
Oil leaking from unit.	DO NOT USE!!!!	Contact KENT Service.

**THE FOLLOWING PAGES
CONTAIN
KENT PART LISTINGS
FOR THE
KW-2200G
&
KW-2800G**

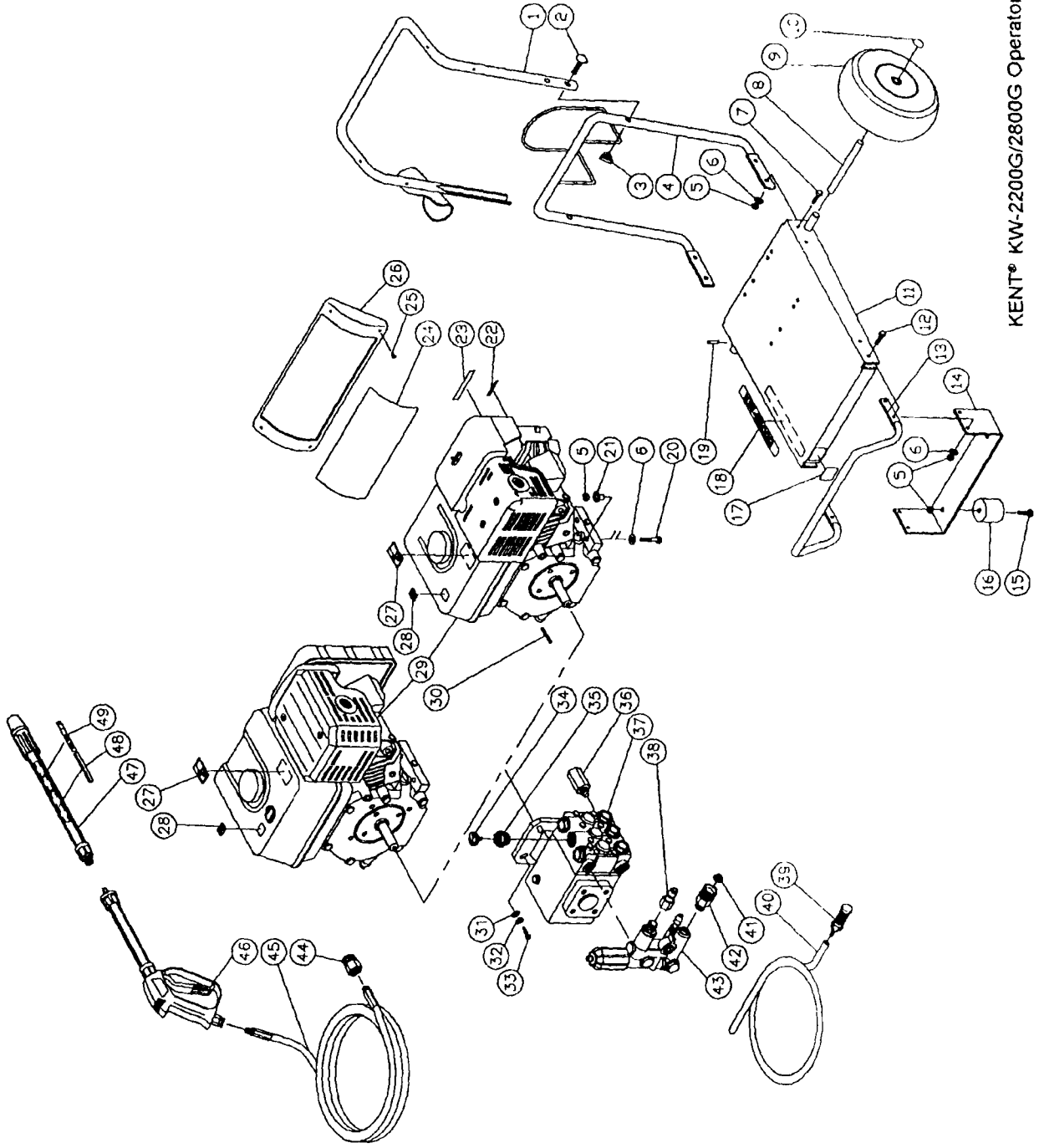
KW-2200G FRAME ASSEMBLY



KW-2200G FRAME ASSEMBLY

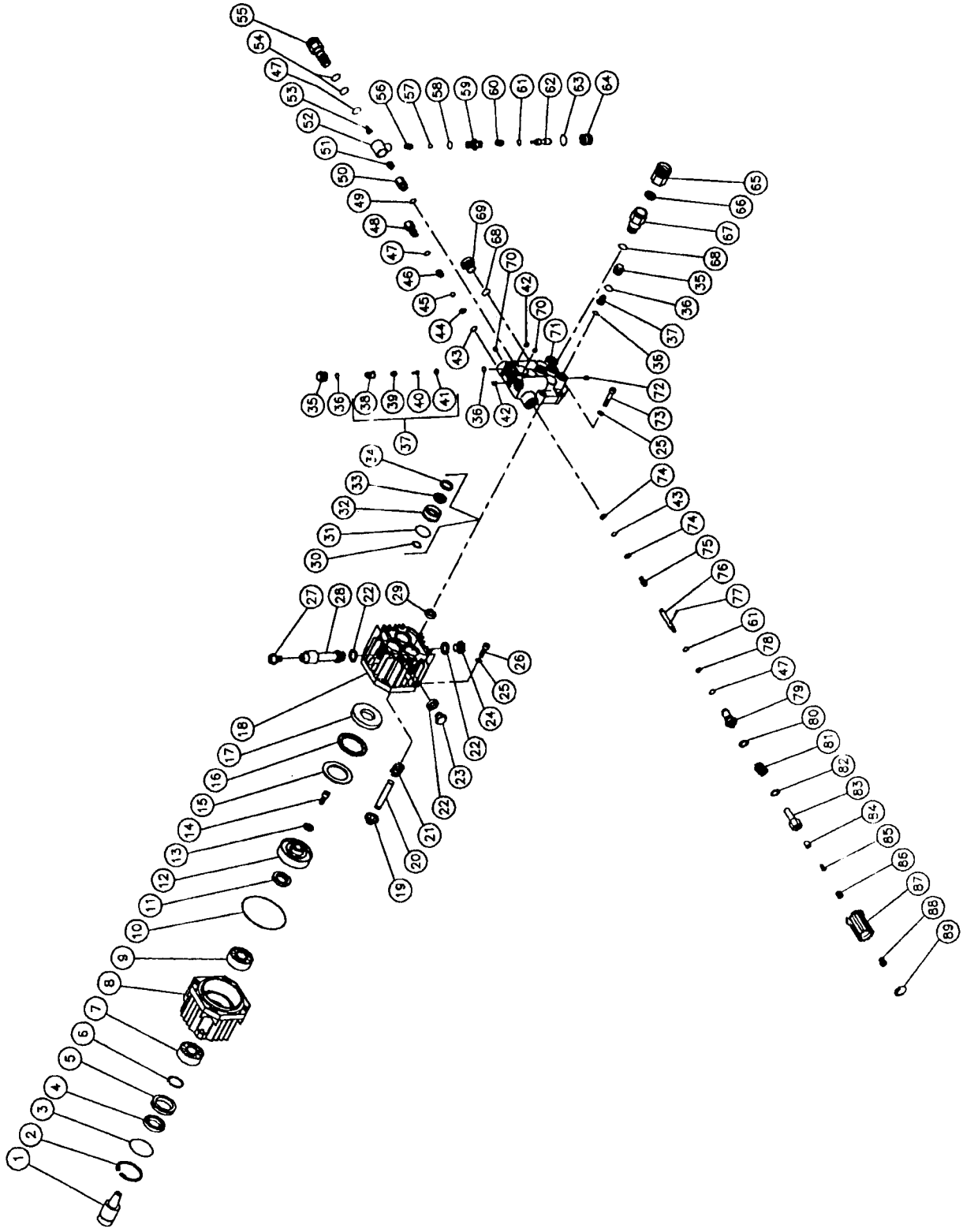
Ref. #	Description	Part #	Qty.	Ref #	Description	Part #	Qty.
1	Handle	M7-0106	1	24	Bolt	M27-3049	4
2	Carriage Bolt	M31-0051	2	25	Name Plate	M62-0084	1
3	Knob	M7-0107	2	26	Decal: Warning-Muffler Hot	M34-0130	1
4	Rear Handle	M7-0108	1	27	Decal: Caution-Allow to Cool	M34-0588	1
5	Locknut	M30-0157	14	28	Engine-5.5 HP Honda	M1-0013	1
6	Washer	M28-0003	12	29	Key	M43-0073	1
7	Bolt	M27-0066	4	30	Pressure Gauge	M22-0107	1
8	Axle	M20-0004	1	31	Valve Plug Adapter	M39-0081	1
9	Wheel	M14-0017	2	32	Lockwasher	M29-0007	4
10	Hub Cap	M33-0018	2	33	Bolt	M27-0847	4
11	Base Plate	M5-0103	1	34	Filter	M19-0001	1
12	Bolt	M27-0067	4	35	Pump	M3-0106	1
13	Front Handle	M7-0103	1	36	Elbow	M23-0014	1
14	Under Bracket	M13-0112	1	37	Heat Dump Valve	M22-0148	1
15	Bolt	M27-0068	2	38	Detergent Hose	M15-0021	4'
16	Isolator	M14-0008	2	39	Detergent Strainer	M19-0050	1
17	Data Plate	M34-0643	1	40	O-ring	M25-0258	1
18	Decal: KW-2200G	M34-0642	1	41	Pressure Hose	M15-0133	1
19	Roll Pin	M43-0002	1	42	Gun Assembly	M16-0218	1
20	Bolt	M27-0070	4	43	Variable Nozzle	M16-0219	1
21	Choke Lever	M34-0458	1	44	Decal: Warning-Risk of Injection	M34-0572	1
22	Throttle	M34-0459	1	45	Decal: Adj. Nozzle/High-Low Soap	M34-0457	1
23	Decal: Warning	M34-0491	1				

KW-2800G FRAME ASSEMBLY



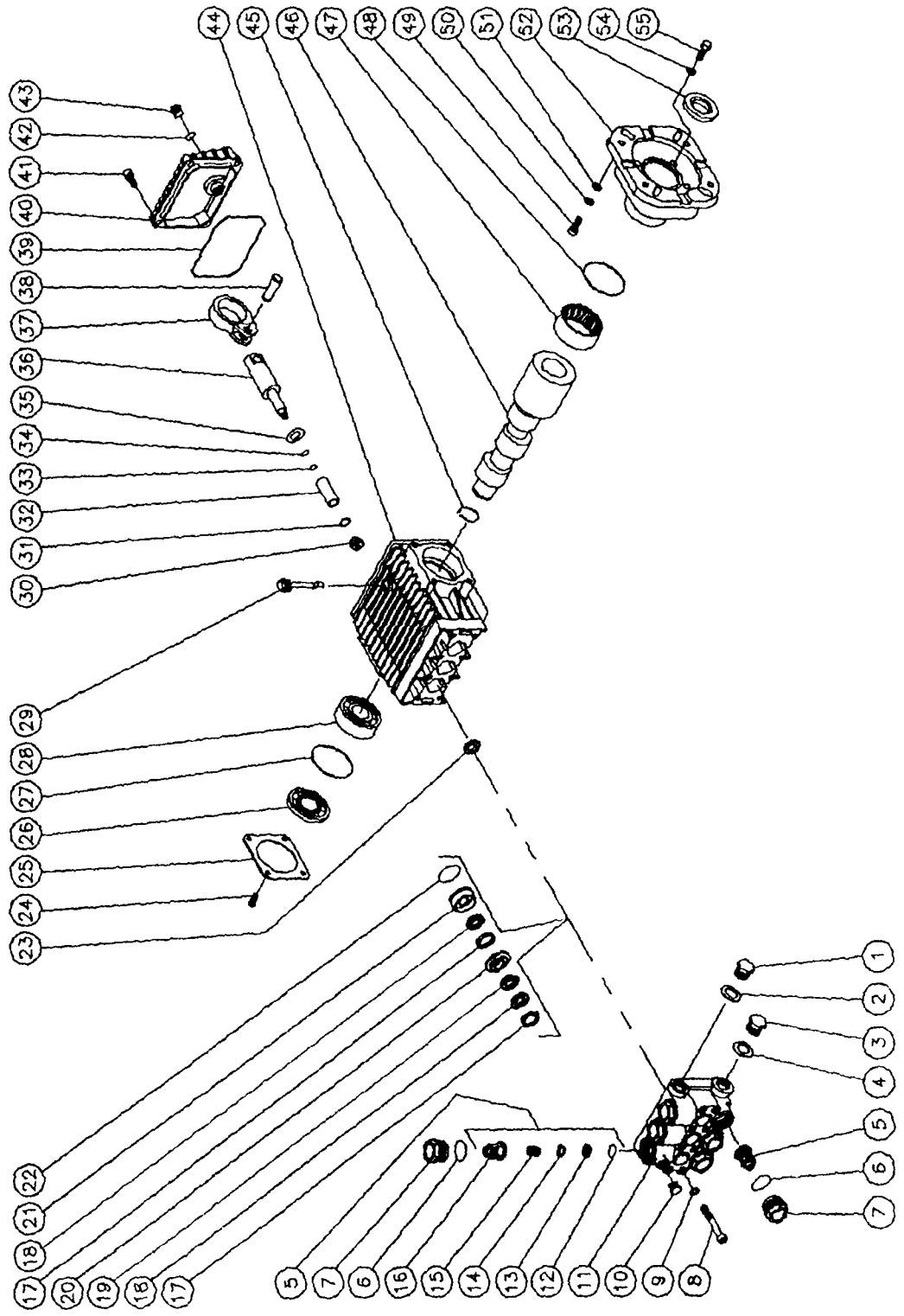
KW-2800G FRAME ASSEMBLY							
Ref. #	Description	Part #	Qty.	Ref #	Description	Part #	Qty.
1	Handle	M7-0106	1	26	Name Plate	M62-0084	1
2	Carriage Bolt	M31-0051	2	27	Decal Warning-Muffler Hot	M34-0130	1
3	Knob	M7-0107	2	28	Decal Caution-Allow to Cool	M34-0588	1
4	Rear Handle	M7-0108	1	29	Engine-9 0 HP Honda	M1-0065	1
5	Locknut	M30-0157	14		CX-0037-9 0 HP Vanguard	M1-0070	1
6	Washer	M28-0003	12	30	Key (Honda Only)	M43-0078	1
7	Bolt	M27-0066	4	31	Washer	M28-0022	4
8	Axle	M20-0004	1	32	Lockwasher	M29-0008	4
9	Wheel	M14-0017	2	33	Bolt	M27-0118	4
10	Hub Cap	M33-0018	2	34	Pressure Gauge	M22-0107	1
11	Base Plate	M5-0103	1	35	Valve Plug Adapter	M39-0078	1
12	Bolt	M27-0067	4	36	Heat Dump Valve	M22-0005	1
13	Front Handle	M7-0103	1	37	Pump	M3-0120	1
14	Under Bracket	M13-0112	1	38	Quick Connect Plug	M17-0006	1
15	Bolt	M27-0068	2	39	Detergent Strainer	M19-0050	1
16	Isolator	M14-0008	2	40	Detergent Hose	M15-0021	4
17	Data Plate	M34-0509	1	41	Filter	M19-0001	1
18	Decal KW-2800G	M34-0492	1	42	Garden Hose Swivel	M23-0095	1
19	Roll Pin	M43-0002	1	43	Unloader	M8-0216	1
20	Bolt	M27-0070	4	44	Quick Connect Socket	M17-0004	1
21	Shim-Engine	M33-0169	4	45	Pressure Hose	M15-0137	1
22	Choke Lever	M34-0458	1	46	Gun Assembly	M16-0218	1
23	Throttle	M34-0459	1	47	Variable Nozzle	M16-0220	1
24	Decal Warning	M34-0491	1	48	Decal Warning-Risk of Injection	M34-0572	1
25	Bolt	M27-3049	4	49	Decal Adj Nozzle/High-Low Soap	M34-0457	1

KW-2200G PUMP ASSEMBLY (M3-0106)



PUMP ASSEMBLY (M3-0108) FOR KW-2203G											
REF #	DESCRIPTION	PART #	QTY	REF #	DESCRIPTION	PART #	QTY	REF #	DESCRIPTION	PART #	QTY
1	Pump Shaft	M46-0427	1	34	Packing Ring (See Kit M70-0002)	N/A Sep.	3	67	Inlet Connector	M23-0188	1
2	Circle Clip	M46-0405	1	35	Valve Plug	M46-0628	6	68	O-ring	M25-0273	2
3	O-ring	M25-0272	1	36	O-ring	M25-0335	12	69	Manifold Plug	M39-0072	1
4	Oil Seal	M46-0425	1	37	Valve Complete (See Kit M70-0003)	N/A Sep.	6	70	Screw	M27-8822	2
5	Spacer	M46-0407	1	38	Valve Cage (See Kit M70-0003)	N/A Sep.	6	71	Manifold	M46-0629	1
6	Circle Clip	M46-0406	1	39	Valve Spring (See Kit M70-0003)	N/A Sep.	6	72	Screw	M27-8198	1
7	Bearing-Rear	M48-0038	1	40	Valve Plate (See Kit M70-0003)	N/A Sep.	6	73	Bolt	M27-8857	4
8	Flange	M52-0028	1	41	Valve Seat (See Kit M70-0003)	N/A Sep.	6	74	Back-up Ring	M25-0247	2
9	Bearing-Front	M48-0037	1	42	Screw	M27-8821	2	75	By-pass Piston (See Kit M70-0120)	N/A Sep.	1
10	O-ring	M25-0243	1	43	O-ring	M25-0230	2	76	Pressure Regulator Pin (See Kit M70-0120)	N/A Sep.	1
11	Washer	M46-0468	1	44	Valve Seat	M46-0409	1	77	Roll Pin	M46-0421	1
12	Wobble Plate	M46-0625	1	45	Ball	M46-0394	1	78	Back-up Ring (See Kit M70-0120)	N/A Sep.	1
13	Washer	M28-0133	1	46	Valve Spring	M46-0411	1	79	Plug (See Kit M70-0120)	N/A Sep.	1
14	Bolt	M27-8432	1	47	O-ring	M25-0255	3	80	Washer	M46-0624	1
15	Bearing Disc-Rear	M48-0047	1	48	Plug	M46-0412	1	81	Pressure Regulation Spring	M49-0109	1
16	Bearing	M48-0048	1	49	O-ring	M25-0334	1	82	Washer	M46-0648	1
17	Bearing Disc-Front	M48-0049	1	50	No-return Valve	M46-0626	1	83	Pressure Regulation Screw	M46-0623	1
18	Pump Housing	M46-0426	1	51	Spring	M49-0110	1	84	Screw Support	M27-8853	1
19	Piston Spring Retainer	M46-0362	3	52	Injector Body	M46-0620	1	85	Bolt	M27-8810	1
20	Piston-Ceramic	M46-0578	3	53	Injector Nozzle	M46-0415	1	86	Internal Screw	M27-8852	1
21	Piston Spring	M49-0081	3	54	O-ring	M25-0263	2	87	Pressure Regulation Knob	M7-0091	1
22	Gasket	M26-0168	3	55	Pressure Outlet	M46-0627	1	88	Screw	M27-8086	1
23	Oil Sight Glass	M46-0582	1	56	Spring (See Kit M852-0056)	N/A Sep.	1	89	Cap	M7-0088	1
24	Oil Drain Plug	M39-0065	1	57	Ball (See Kit M852-0056)	N/A Sep.	1		Oil Seal Kit (Includes 3 each 29)	M70-0001	
25	Lockwasher	M29-0154	8	58	O-ring (See Kit M852-0056)	N/A Sep.	1		Packing Kit (Inc. 3 each 30, 31, 33 & 34)	M70-0002	
26	Bolt	M27-8194	4	59	Injector Nipple	M46-0417	1		Valve Kit (Inc. 6 each 36 & 37)	M70-0003	
27	Oil Cap	M39-0066	1	60	Injector Spring	M49-0088	1		Unloader Seat (Includes 43-46)	M70-0110	
28	Oil Tube Extension	M46-0351	1	61	O-ring (See Kit M852-0056)	N/A Sep.	2		Unloader Stem (Includes 43, 47, 61, 74-89)	M70-0120	
29	Oil Seal (See Kit M70-0001)	N/A Sep.	3	62	Injector Piston	M46-0418	1		Injector Assembly (Includes 47, 49-64)	M70-0005	
30	O-ring (See Kit M70-0002)	N/A Sep.	3	63	Flexible Ring	M25-0277	1		Injector Repair Kit (Includes 55-58 & 61)	M852-0056	
31	O-ring (See Kit M70-0002)	N/A Sep.	3	64	Injector Regulation Knob	M46-0469	1		Manifold Assembly (Includes 30-64, 67-72, 74-89)	M70-0006	
32	Packing Retainer	M9-0060	3	65	Garden Hose Connection	M23-0162	1				
33	V-Packing (See Kit M70-0002)	N/A Sep.	3	66	Gasket	M26-0166	1				

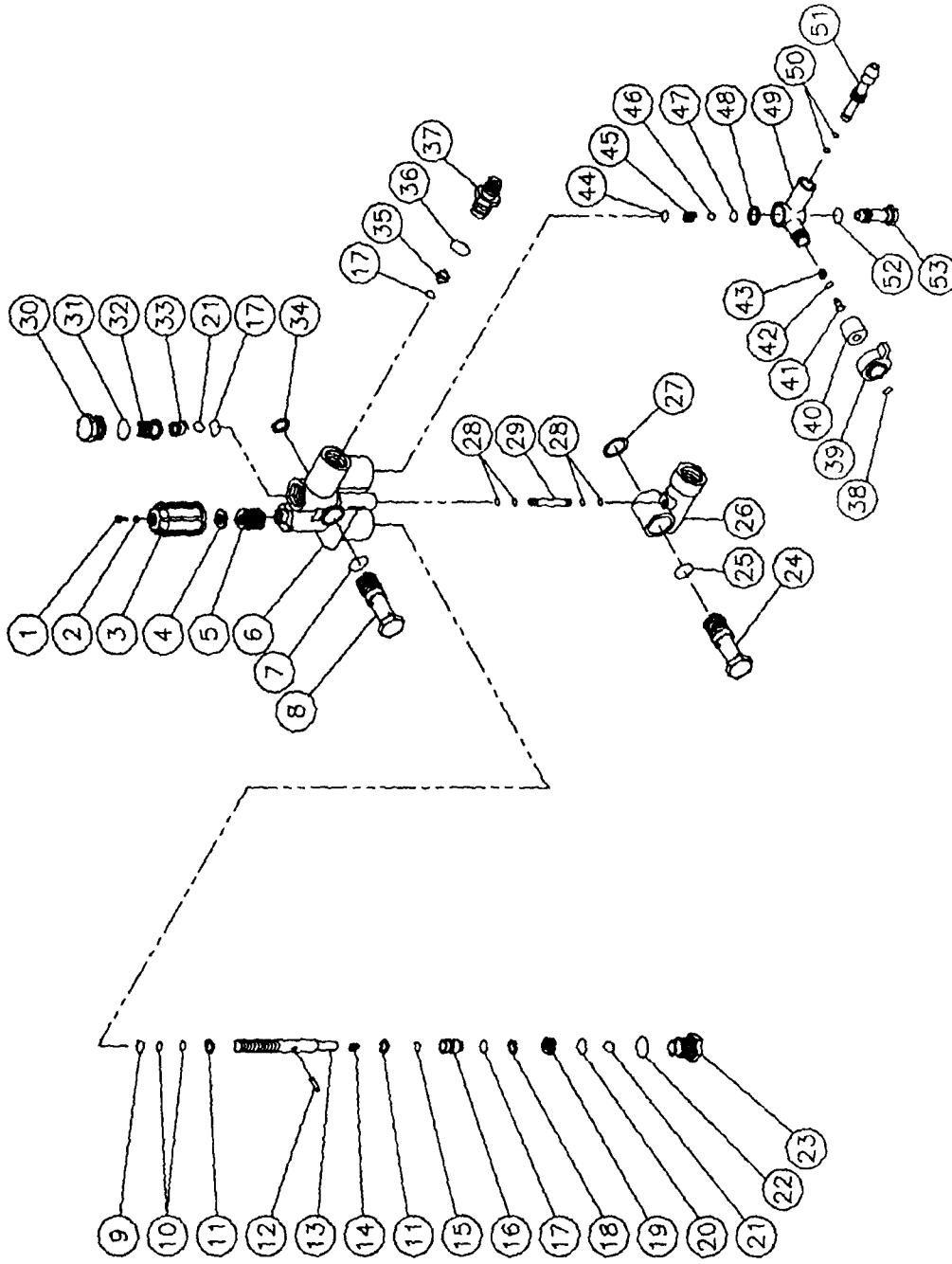
KW-2800G PUMP ASSEMBLY (M3-0120)



KW-2800G PUMP ASSEMBLY (M3-0120)						
REF #	DESCRIPTION	PART #	QTY	REF #	DESCRIPTION	PART #
1	Plug	M39-0018	1	30	Nut	M46-0168
2	Washer	M28-0600	1	31	Washer	M46-0166
3	Plug	M39-0019	1	32	Plunger	M46-0228
4	Washer	M28-0601	1	33	O-ring	M25-0045
5	Valve Assembly (See M70-0028)	N/A Sep	6	34	Back-up Ring	M25-0143
6	O-ring	M25-0012	6	35	Flinger Washer	M28-1018
7	Valve Plug	M39-0071	6	36	Piston Guide	M46-0573
8	Bolt	M27-8439	8	37	Connecting Rod	M46-0572
9	Lockwasher	M29-0154	8	38	Pin/Connecting Rod	M43-0079
10	Plug	M39-0032	1	39	O-ring	M25-0317
11	Pump Manifold	M46-0566	1	40	Crankcase cover	M46-0571
12	O-ring (See M70-0028)	N/A Sep	6	41	Bolt	M27-8401
13	Valve Seat (See M70-0028)	N/A Sep	6	42	O-ring	M25-0014
14	Valve Plate (See M70-0028)	N/A Sep	6	43	Plug	M39-0017
15	Valve Spring (See M70-0028)	N/A Sep	6	44	Crankcase	M46-0570
16	Valve Cage (See M70-0028)	N/A Sep	6	45	Snap Ring	M46-0104
17	Head Ring (See M852-0047)	N/A Sep	6	46	Crankshaft	M46-0569
18	V-Packing (See M852-0047)	N/A Sep	6	47	Bearing/Needle	M48-0040
19	Stop Ring Packing (See M852-0047)	N/A Sep	3	48	O-ring	M25-0316
20	Intermediate Ring	M46-0223	3	49	Bolt	M27-0118
21	Packing Retainer	M46-0567	3	50	Lockwasher	M29-0008
22	O-ring	M25-0048	3	51	Washer	M28-0023
23	Seal	M26-0046	3	52	Flange	M38-0038
24	Bolt	M27-8000	4	53	Oil Seal	M26-0181
25	Retainer	M46-0084	1	54	Lockwasher	M29-0153
26	Oil Level Indicator	M46-0574	1	55	Bolt	M27-8404
27	O-ring	M25-0060	1		Valve Kit (Inc 6 each 12-16)	M70-0028
28	Ball Bearing	M48-0050	1		V-Packing Kit (Inc 6 each 17, 18 and 3 each 19)	M852-0047
29	Oil Dipstick	M46-0143	1			

KENT® KW-2200G/2800G Operator's Manual 1995

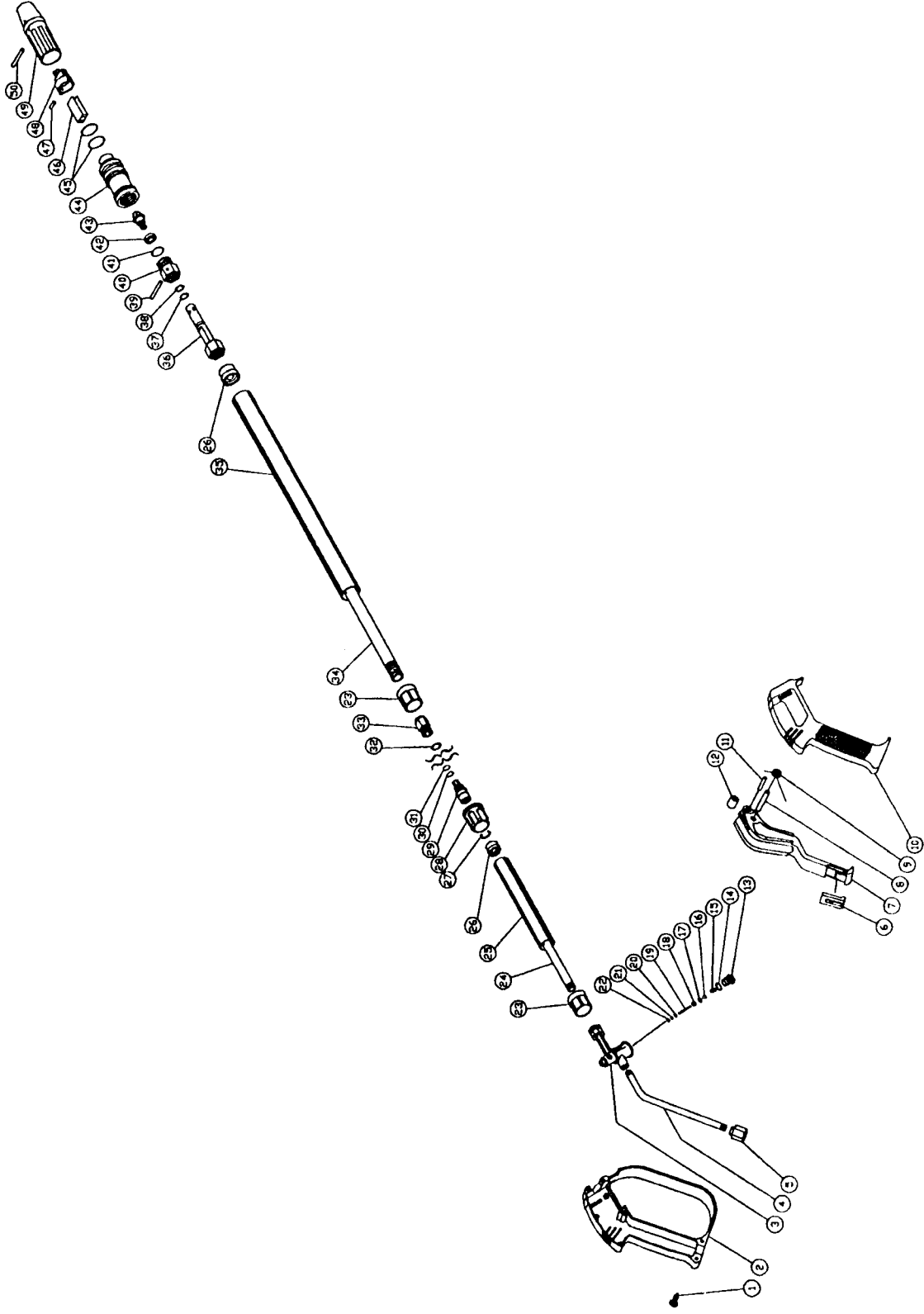
KW-2800G UNLOADER ASSEMBLY (M8-0216)



KW-2800G UNLOADER ASSEMBLY (M8-0216)							
REF. #	DESCRIPTION	PART #	QTY.	REF. #	DESCRIPTION	PART #	QTY.
1	Screw	M27-8409	1	29	By-pass Tube	M8-0223	1
2	Nut	M30-3024	1	30	Cap	M39-0040	1
3	Pressure Regulating Knob	M7-0050	1	31	O-ring	M25-0136	1
4	Spring Guide	M8-0332	1	32	Valve Guide	M8-0225	1
5	Spring	M49-0047	1	33	Spring	M49-0046	1
6	Valve Body-Brass	M8-0218	1	34	Washer	M28-0600	1
7	O-ring	M25-0231	1	35	Orifice	M8-0216	1
8	Fixing Screw-Brass	M8-0224	1	36	O-ring	M25-0051	1
9	Anti-Extension Ring	M25-0137	1	37	Nipple	M8-0130	1
10	O-ring	M25-0138	2	38	Snap Ring	M8-0229	1
11	Washer	M28-0209	2	39	Injector Regulating Knob	M7-0051	1
12	Pin	M43-0051	1	40	Knob Insert	M8-0228	1
13	Piston Guide	M8-0219	1	41	Shutter	M8-0227	1
14	Spring	M49-0049	1	42	O-ring	M25-0046	1
15	O-ring	M25-0163	1	43	Spring	M49-0019	1
16	Drive Piston	M8-0220	1	44	O-ring	M25-0120	1
17	O-ring	M25-0050	3	45	Spring	M49-0020	1
18	Back-up Ring	M8-0284	1	46	Ball	M50-0012	1
19	Valve Seat	M8-0221	1	47	O-ring	M25-0045	1
20	O-ring	M25-0159	1	48	Washer	M28-0400	1
21	Ball	M8-0201	1	49	Injector Body	M8-0226	1
22	O-ring	M25-0160	1	50	O-ring	M25-0132	2
23	Cap-Brass	M39-0039	1	51	Hose Barb	M8-0177	1
24	Fixing Screw	M8-0222	1	52	O-ring	M25-0014	1
25	O-ring	M25-0053	1	53	Valve Seat	M8-0174	1
26	Inlet Body	M46-0242	1		Unloader Repair Kit (Includes 5,7,9,10,14,15,17-22,25,28,31-33)	M70-0020	1
27	Washer	M28-0601	4		Detergent Repair Kit (Includes 17, 35,42-47,50,52)	M70-0021	1
28	O-ring	M25-0161	1				

KENT® KW-2200G/2800G Operator's Manual 1995

KW-2200G/KW-2800G GUN (16-0218) & WAND (16-0219/16-0220) ASSEMBLY



GUN (M16-0218) & WAND (M16-0219/M16-0220) ASSEMBLY

REF. #	DESCRIPTION	PART #	QTY.	REF. #	DESCRIPTION	PART #	QTY.
1	Screw	M27-8950	7	29	Engagement Pin (See M16-0257)	N/A Sep.	1
2	Plastic Housing (Left side)	M16-0253	1	30	Back-up Ring (See M16-0257)	N/A Sep.	1
3	Housing-Brass	M16-0251	1	31	O-ring (See M16-0257)	N/A Sep.	1
4	Pipe	M16-0252	1	32	O-ring	M25-0318	1
5	Coupler	M16-0255	1	33	Nipple	M16-0222	1
6	Trigger Safety Lock	M16-0256	1	34	Pipe	M16-0224	1
7	Trigger	M16-0254	1	35	Wand Protector	M16-0293	1
8	Trigger Pin	M16-0245	1	36	Nozzle Holder (See M18-0252 or M18-0248)	N/A Sep.	1
9	Trigger Spring	M49-0100	1	37	Back-up Ring (See M18-0252 or M18-0248)	N/A Sep.	1
10	Plastic Housing with Warning (Right Side)	M16-0243	1	38	O-ring (See M18-0252 or M18-0248)	N/A Sep.	1
11	Pin	M16-0250	1	39	Pin (See M18-0252 or M18-0248)	N/A Sep.	1
12	Bushing	M16-0232	1	40	Slide Adapter (See M18-0252 or M18-0248)	N/A Sep.	1
13	Plug (See Kit M70-0060)	N/A Sep.	1	41	O-ring (See M18-0252 or M18-0248)	N/A Sep.	1
14	O-ring (See Kit M70-0060)	N/A Sep.	1	42	Seal (See M18-0252 or M18-0248)	N/A Sep.	1
15	Spring (See Kit M70-0060)	N/A Sep.	1	43	Nozzle Orifice -for KW-2200 1.20mm -for KW-2800 1.30mm	M18-0250 M18-0251	1
16	Ball (See Kit M70-0060)	N/A Sep.	1	44	Vari. Nozzle Body (See M18-0252 or M18-0248)	N/A Sep.	1
17	O-ring (See Kit M70-0060)	N/A Sep.	1	45	O-ring (See M18-0252 or M18-0248)	N/A Sep.	2
18	Seat (See Kit M70-0060)	N/A Sep.	1	46	Spring (See M18-0252 or M18-0248)	N/A Sep.	1
19	Pin (See Kit M70-0060)	N/A Sep.	1	47	Pin (See M18-0252 or M18-0248)	N/A Sep.	1
20	Washer (See Kit M70-0060)	N/A Sep.	1	48	Angle Regulator (See M18-0252 or M18-0248)	N/A Sep.	1
21	O-ring (See Kit M70-0060)	N/A Sep.	1	49	Nozzle Cover (See M18-0252 or M18-0248)	N/A Sep.	1
22	Back-up Ring (See Kit M70-0060)	N/A Sep.	1	50	Pin (See M18-0252 or M18-0248)	N/A Sep.	1
23	Gun/Wand Connector	M16-0182	2		Gun w/Screw Lance (includes items 1-31)	M16-0218	1
24	Pipe	M16-0224	1		Gun Repair Kit (includes items 13-22)	M70-0060	1
25	Wand Protector	M16-0293	1		Gun/Wand Connector Assy. (includes 27-31)	M16-0257	1
26	Plastic Protector	M16-0226	2		Variable Nozzle Assembly (includes 32-50) -for KW-2200G -for KW-2800G	M16-0219 M16-0220	1
27	Snap Ring (See M16-0257)	N/A Sep.	1		Adjustable Nozzle Assy. (includes 36-50) -for KW-2200G -for KW-2800G	M18-0252 M18-0248	1
28	Hand Wheel (See M16-0257)	N/A Sep.	1		Must order M16-0218 & M16-0219/M16-0220 for complete Assembly.		

THE KENT LIMITED WARRANTY

Your Kent equipment which has been manufactured, tested and inspected in accordance with carefully specified engineering requirements, is warranted to be free from defects in material and workmanship. This warranty is, however, subject to the following qualifications, conditions and limitations which are set forth to provide you and all users of the Kent equipment with information concerning the duration, extent, availability and applicability of this Kent limited warranty, the procedure to be taken to obtain its performance and other information concerning the Kent warranty policy.

The Kent Limited Warranty is extended to the original end user as follows:

KW Series pressure washers 1 year parts replacement and service labor warranty. Normal wear parts including hoses, gaskets, pump seals and nozzles guaranteed against defects for a period of 90 days from date of sale. Honda engines are warranted by American Honda Co., Inc. for a period of 1 year.

Replacement parts guaranteed for 90 days from date of installation against defects in material and workmanship.

The 10 year poly component replacement warranty with 1 year service labor extends for a period of ten (10) years from the date of the original purchase of the Kent equipment by the original purchaser. This warranty will not cover damage attributable to the following:

- (1) Improper, unreasonable or negligent use or abuse of the equipment.
- (2) Use of equipment with hot water or high temperature above 130 degrees Fahrenheit (54 degrees Centigrade).
- (3) "Warping", "Creepage", or "Distortion: of part so long as the same does not interfere with normal operation.
- (4) Abrasions or punctures of the equipment.

The start date of the warranty coverage shall be the purchase date of the original end user or 1 year from the date the machine was shipped from the factory, whichever come first. Proof of purchase will be required.

PARTS OF KENT EQUIPMENT NOT COVERED BY WARRANTY

Certain parts of Kent equipment require replacement in the ordinary course of use due to normal wear by reason of their characteristics. These are normal wear items such as cords, gaskets, switches, bumpers, carbon brushes, handle grips, bags, hoses, bearings, etc.

EXCEPTIONS AND EXCLUSIONS FROM WARRANTY

This equipment is required to be used on electric current as indicated on the data plate. Otherwise damage, defects, malfunctions or other failures of the equipment arising from use on electric current not as indicated are excepted and excluded from this warranty. Defects, malfunctions, failure or damage of the equipment caused by improper, unreasonable or negligent use or abuse other than those designated as authorized to perform such work without first having obtained factory instructions, The Kent Company, at its sole option, may determine that this warranty will not apply and that reimbursement for such repair will not be made because of the failure to comply with such factory specified instructions.

PROCEDURE TO BE TAKEN TO OBTAIN PERFORMANCE OF WARRANTY REPAIR

To secure repair of the equipment or any warranted parts under this warranty, the following procedure should be taken. The inoperative equipment or warranted parts, together with satisfactory evidence of the purchase date, must be delivered, with shipping and deliver charges prepaid, to one of the following:

- (1) The dealer from whom purchased;
- (2) Any Kent distributor's service department in the United States;
- (3) Any Kent authorized service station in the United States.

If you are unable to locate any of the foregoing, you may write or otherwise communicate with The Kent Company for instructions before repair service is performed by anyone else. In such event, The Kent Company will provide either the location of a closely available Kent distributor service department or Kent authorized service station or other factory instructions. Upon compliance with the above procedure, all warranted defects will be repaired, at no additional charge or costs to the customer, and the repaired product returned to the customer, with all shipping and delivery charges prepaid. In following the procedures above set forth, PLEASE MAKE CERTAIN to state the Kent model, type and serial number as shown on the data plate of the equipment.

REPLACEMENT

In the event of a defect, malfunction or failure of your Kent equipment or any warranted part to conform with this warranty, The Kent Company may, at its sole option and own expense, replace the equipment or any warranted part with another new identical or reasonably equivalent model or part in lieu of repairing the defect.

NO REFUND OF PURCHASE PRICE

The Kent Company will not, as a matter of its warranty policy, refund the customer's purchase price.

WARRANTY REGISTRATION CARD FOR YOUR KENT EQUIPMENT AND INFORMATION REQUEST

Your Kent Company distributor from whom you purchased your equipment is responsible for the registration of your warranty with the factory. We ask that you cooperate with your distributor in supplying the necessary information on the warranty card so that we may better serve you. Any information or questions you may have concerning your Kent equipment or this warranty may likewise be secured from the factory. This warranty gives you specific legal rights, and you may also have other rights which vary from state to state.

THE KENT COMPANY
P.O. BOX 1665 ELKHART, INDIANA 46515