



Electronic Service Manuals

This electronic document is provided as a service to our customers. We do not create the contents of the information contained in this document. Should you have detailed questions pertaining to the information contained in this document, you may contact Michco, or the manufacturer which provided the original information in this electronic deliverable. Michco's only part in this electronic deliverable was the electronic assembly process.

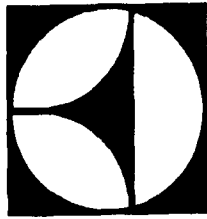
You may contact Michco through the following methods:
Phone (517) 484-9312 or (800) 331-3339 MI, OH, IN only
2011 N. High St. -- Lansing, Michigan -- 48906
Fax: (517) 484-9836
Email: CustServ@Michco.com
Web site: www.Michco.Com
Parts Web site: www.FloorMachineParts.Com

Order Parts on Line at:
www.FloorMachineParts.Com

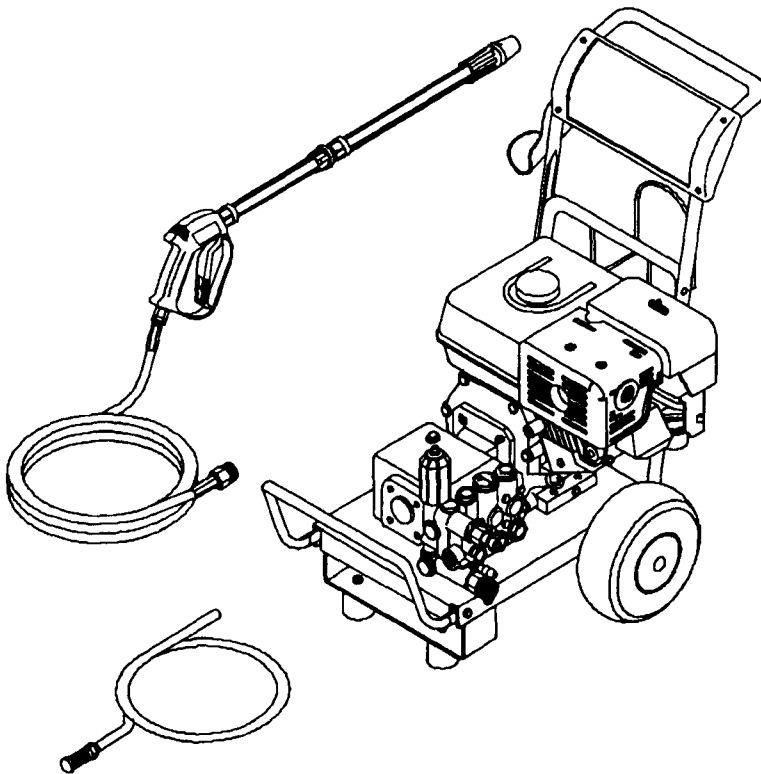
Directly to Parts & Service:
By Email: **Shop@Michco.com**
By Fax: (517) 702-2041
By Voice: Use numbers above.

Serving the Cleaning Industry Since 1922

Notice: All copyrighted material remains property of original owners, all trademarks are property of respective owners. Manuals are subject to Manufacturer's reproduction limitations. Originals or reproductions were provided by manufacturers through a request. We make no warranty as to the correctness of information provided in this document and you assume all risk.



KENT



MODEL:
KW-2000G
PRESSURE
WASHERS

**OPERATING,
MAINTENANCE
INSTRUCTIONS
& ILLUSTRATED
PARTS LIST**

THE KENT COMPANY
P.O. Box 1665
2310 Industrial Parkway
Elkhart, IN 46515
TEL: (219)293-8661,
(800)334-1083

~~(800)642-0885 (Indiana)~~

FAX: (219)295-8610

~~TELEX: 95 8331 KENT CO EKR~~

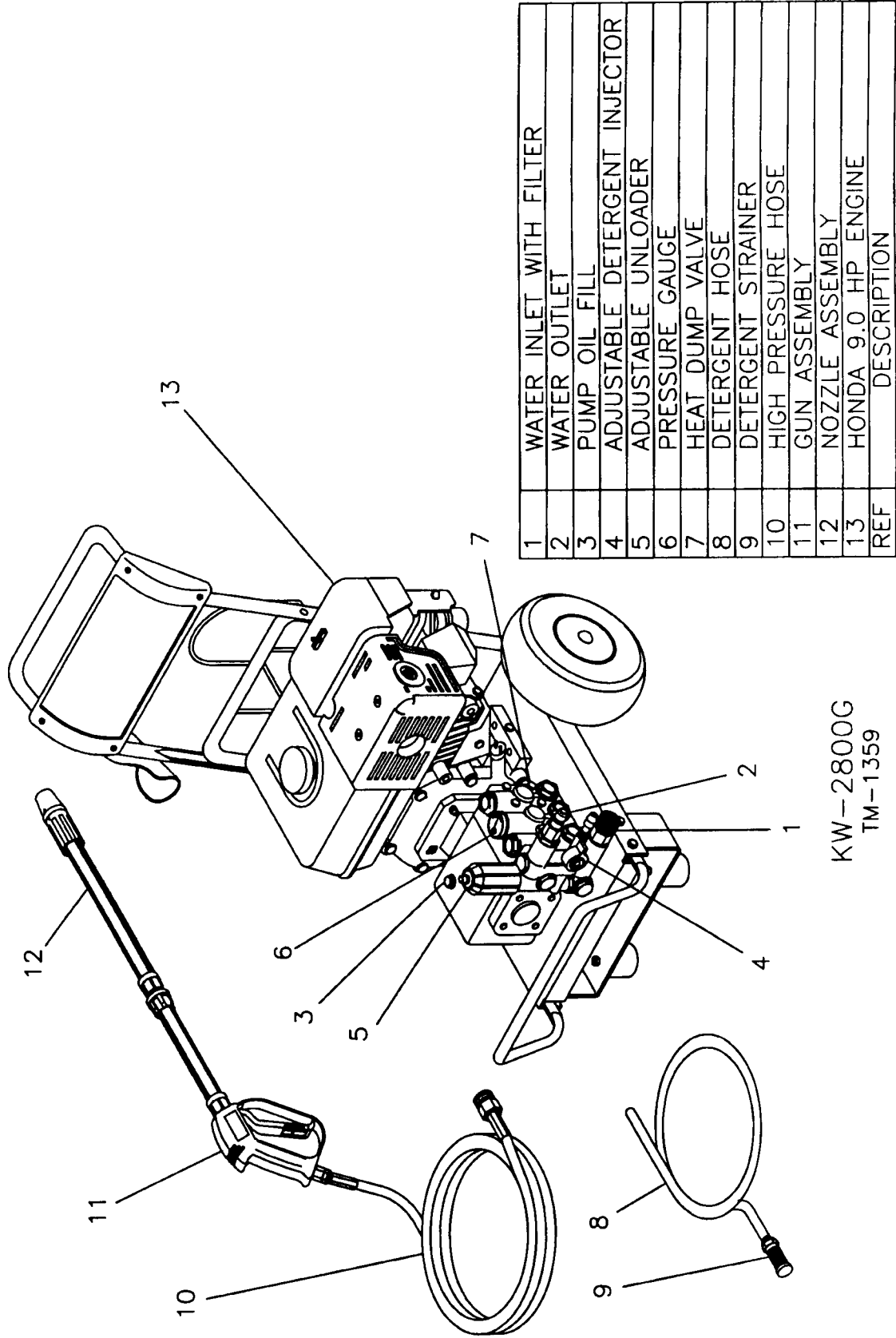
FEBRUARY 1993

TABLE OF CONTENTS

	Page(s)
EQUIPMENT SPECIFICATIONS	2
STANDARD EQUIPMENT	3-4
IMPORTANT SAFETY WARNINGS	
SPRAY PRECAUTIONS	5
DETERGENT CLEANING PRECAUTIONS	5
MISCELLANEOUS PRECAUTIONS	6
ADJUSTMENT PRECAUTIONS	7
GASOLINE PRECAUTIONS	8
GENERAL & SERVICE INFORMATION	9
PREPARATION & INSTALLATION	
INSTALLATION	10
ATTIRE	10
WATER SUPPLY	10
ADJUSTABLE NOZZLE	11
FUEL	11
UNLOADER	11
OPERATING INSTRUCTIONS	
START-UP	12
ENGINE OVERVIEW	13
CLEANING WITH DETERGENTS	14
SHUT-DOWN	14
INSPECTION PROCEDURES	14
STORAGE & MAINTENANCE	
WINTERIZING	15
NOZZLE MAINTENANCE	15
NOZZLE REMOVAL / REPLACEMENT	15
GENERAL MAINTENANCE	16
SPECIFIC MAINTENANCE	16
SERVICE DIAGNOSIS- FAULTS & REPAIR	17
PARTS LISTING & B/M	18-28

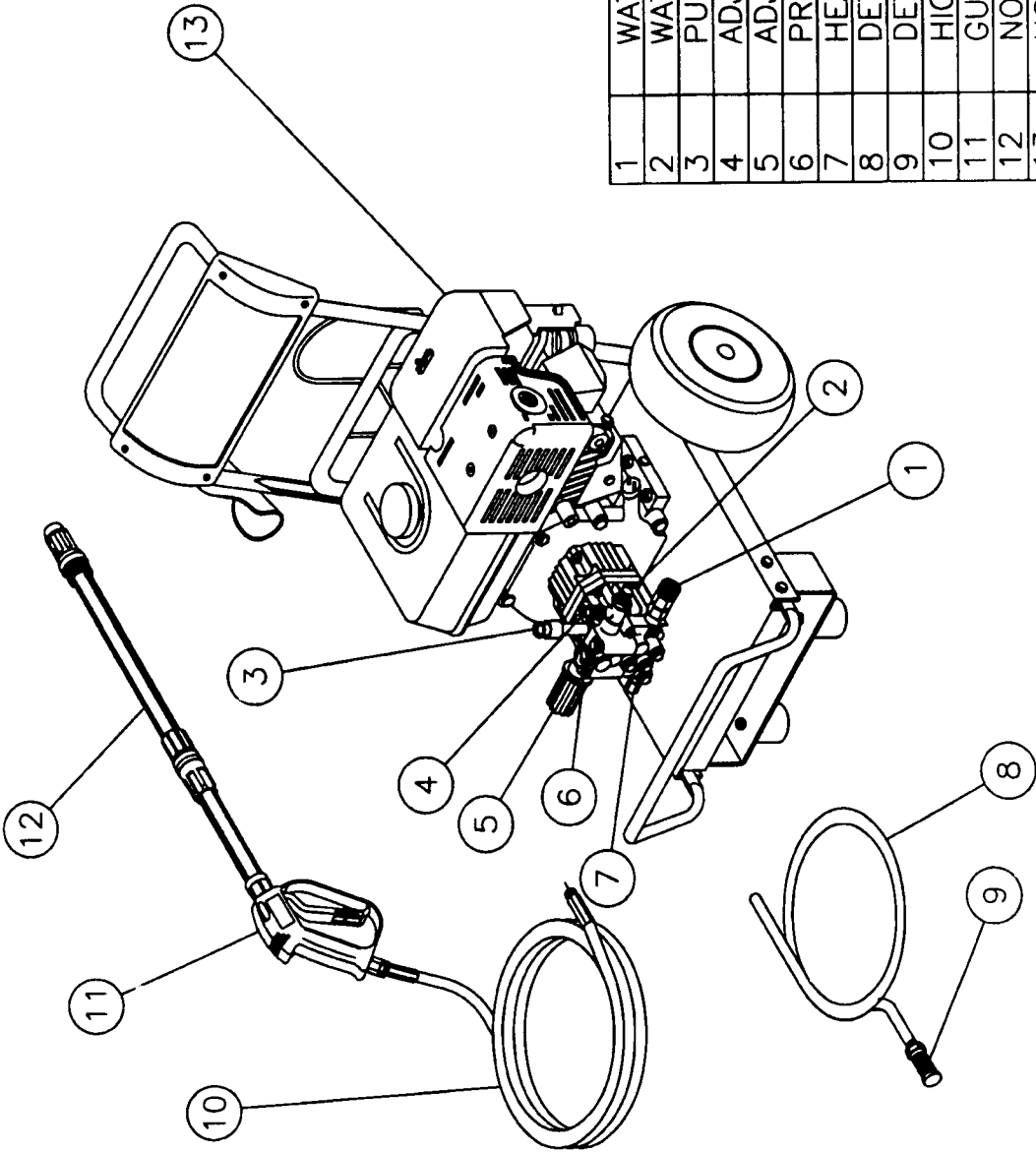
EQUIPMENT SPECIFICATIONS

	KW-2000G	KW-2800G
Model Number	KW-2000G	KW-2800G
Operating Pressure (psi)	2000	2800
Flow Rate (gpm)	2.7	3.3
Max. Inlet Water Temp (F°)	135°	135°
Gasoline Engine (std)	Honda	Honda
Engine Horsepower	5.5	9.0
Engine (Honda) Model Number	GX160KIQX	GX270KIQA
Nozzle Angle	0°-65° adjustable	0°-65° adjustable
Lance Length (in)	36	35.5
Engine Oil	SAE 10w40	SAE 10w40
Pump Style	Axial Piston	Ceramic Piston
Pump Oil	SAE 30 Non-Detergent	SAE 30 Non-Detergent
Pressure Hose (ft)	23	40
Fuel Tank Cap (gal)	0.97	1.60
Fuel Consumption (gph)	0.53	0.75
Length (in)	34	34
Width (in)	23	23
Height (in)	29	29
Weight (lbs)	83	155
Shipping Weight (lbs)	93	165



1	WATER INLET WITH FILTER
2	WATER OUTLET
3	PUMP OIL FILL
4	ADJUSTABLE DETERGENT INJECTOR
5	ADJUSTABLE UNLOADER
6	PRESSURE GAUGE
7	HEAT DUMP VALVE
8	DETERGENT HOSE
9	DETERGENT STRAINER
10	HIGH PRESSURE HOSE
11	GUN ASSEMBLY
12	NOZZLE ASSEMBLY
13	HONDA 9.0 HP ENGINE
REF	DESCRIPTION

KW-2800G
TM-1359



1	WATER INLET WITH FILTER
2	WATER OUTLET
3	PUMP OIL FILL
4	ADJUSTABLE DETERGENT INJECTOR
5	ADJUSTABLE UNLOADER
6	PRESSURE GAUGE
7	HEAT DUMP VALVE
8	DETERGENT HOSE
9	DETERGENT STRAINER
10	HIGH PRESSURE HOSE
11	GUN ASSEMBLY
12	NOZZLE ASSEMBLY
13	HONDA 5.5 HP ENGINE
REF	DESCRIPTION

KW-2000G
TM-1357

IMPORTANT SAFETY WARNINGS

SPRAY PRECAUTIONS:

WARNING!

HIGH PRESSURE SPRAY CAN CAUSE SERIOUS INJURY.

1. **KEEP AWAY FROM SPRAY:** Because of the high pressure and velocity of the spray, fluids can penetrate the skin, causing serious injury.
NEVER point the gun at yourself or anyone else. **NEVER** put your hand, fingers or body directly over the spray nozzle.
If an accident does occur and the spray appears to have penetrated the skin, **SEEK EMERGENCY MEDICAL CARE. DO NOT TREAT AS A SIMPLE CUT.** If you are using cleaning agents, be prepared to tell a physician exactly what kind.
2. **ALWAYS** wear protective goggles when operating the unit to shield the eyes from flying debris.
3. Even after the unit is shut off, there can be high pressure water left in the pump, hose and gun until you release it by triggering the gun. Before removing the pressure hose or servicing the unit, **ALWAYS** shut off the unit and trigger the gun to release trapped pressure.
4. **NEVER** operate the gun with the trigger "wired" in the open position.
5. To prevent accidental discharge, the trigger should be securely locked when not in use.
6. To reduce the risk of injury, maintain a safe distance from persons while operating unit. Close supervision is necessary when used near children.
7. **NEVER** allow children to operate this unit. Adolescents should **NOT** operate this unit unless under constant adult supervision. (Supervising adult assumes ALL responsibility and liability.)

DETERGENT CLEANING PRECAUTIONS:

1. **KNOW YOUR DETERGENTS!** Be prepared to tell a physician exactly what you are using in the event of an emergency. Read all detergent labels and follow all appropriate instructions regarding preparation, use, safety, and transportation. Keep **ALL** detergents out of the reach of children.
2. **ALWAYS** wear eye protection when using a pressure washer. Other protective clothing, e.g. rubber suits, rubber gloves, respirator, etc. may be necessary. Read the detergent label for recommended safety attire.
3. **DO NOT** use highly corrosive detergents or acid type cleaners with this pressure washer.
4. **DO NOT** alter the detergent injection feature in any manner not prescribed in this manual.
5. Avoid working on hot surfaces or in direct sunlight to minimize the chances of the soap damaging painted surfaces.
6. **DO NOT** allow detergent to dry on painted surfaces as damage may occur.

IMPORTANT SAFETY WARNINGS

Spark arrestor is std equipment only on KW-2800G.

MISCELLANEOUS SAFETY PRECAUTIONS:

1. Stay alert- - watch what you are doing. Do not operate the product when fatigued, or under the influence of alcohol or drugs.
2. The operator should **NEVER** squeeze trigger unless securely braced. The thrust from the water traveling through the nozzle may be powerful enough to cause the operator to lose balance if unprepared. **DO NOT** overreach or stand on unstable support. Keep good footing and balance at all times. **NEVER** trigger a gun while on a ladder.
3. **DO NOT** lay hose directly over any hot surface and avoid dragging hose over abrasive surfaces such as cement. This causes wear and eventual rupturing. If a hose or fitting is leaking, **NEVER** place your hand directly on the leak.
4. When connecting high pressure hose assembly, **BE CERTAIN** the connection is securely tightened.
5. When connecting water inlet to water supply mains, local regulations of your water company must be observed. In some areas the unit must not be connected directly to the public drinking water supply. This is to ensure that there is no feedback of detergents into the water supply. (Direct connection is permitted if a **backflow preventer** is installed.)
6. **DO NOT** leave pressurized unit unattended. Shut off the unit and relieve pressure before leaving.
7. **DO NOT** operate if you see any pump oil or water leaks from the unit. **DO NOT** resume operation until the unit has been inspected and repaired by an authorized service representative.

ADJUSTMENT PRECAUTIONS:

1. Be sure any accessory items and system components being used will withstand the unit pressure generated. **NEVER** alter or modify equipment. Your personal safety as well as the function of the equipment is at stake.
2. **DO NOT** try to overtighten any pressure adjustment. Changing these settings may cause excessive pressure, intermittent unloader operation, and increased wear on parts.
3. Know how to stop the pressure washer and bleed pressures quickly. Be thoroughly familiar with controls.
4. Follow the maintenance instructions specified in this manual.
5. Use **ONLY** genuine parts for repair of your pressure washer. Failure to do so may cause hazardous operating conditions and will void warranty.

IMPORTANT SAFETY WARNINGS

MISCELLANEOUS SAFETY PRECAUTIONS:

1. Stay alert- - watch what you are doing. Do not operate the product when fatigued, or under the influence of alcohol or drugs.
2. The operator should **NEVER** squeeze trigger unless securely braced. The thrust from the water traveling through the nozzle may be powerful enough to cause the operator to lose balance if unprepared. **DO NOT** overreach or stand on unstable support. Keep good footing and balance at all times. **NEVER** trigger a gun while on a ladder.
3. **DO NOT** lay hose directly over any hot surface and avoid dragging hose over abrasive surfaces such as cement. This causes wear and eventual rupturing. If a hose or fitting is leaking, **NEVER** place your hand directly on the leak.
4. When connecting high pressure hose assembly, **BE CERTAIN** the connection is securely tightened.
5. When connecting water inlet to water supply mains, local regulations of your water company must be observed. In some areas the unit must not be connected directly to the public drinking water supply. This is to ensure that there is no feedback of detergents into the water supply. (Direct connection is permitted if a **backflow preventer** is installed.)
6. **DO NOT** leave pressurized unit unattended. Shut off the unit and relieve pressure before leaving.
7. **DO NOT** operate if you see any pump oil or water leaks from the unit. **DO NOT** resume operation until the unit has been inspected and repaired by an authorized service representative.

ADJUSTMENT PRECAUTIONS:

1. Be sure any accessory items and system components being used will withstand the unit pressure generated. **NEVER** alter or modify equipment. Your personal safety as well as the function of the equipment is at stake.
2. **DO NOT** try to overtighten any pressure adjustment. Changing these settings may cause excessive pressure, intermittent unloader operation, and increased wear on parts.
3. Know how to stop the pressure washer and bleed pressures quickly. Be thoroughly familiar with controls.
4. Follow the maintenance instructions specified in this manual.
5. Use **ONLY** genuine parts for repair of your pressure washer. Failure to do so may cause hazardous operating conditions and will void warranty.

IMPORTANT SAFETY WARNINGS

WARNING

YOU AS THE OWNER, ARE RESPONSIBLE FOR THE SAFE OPERATION OF THIS UNIT. ALWAYS PROVIDE A COPY OF THIS MANUAL TO ANYONE USING THIS EQUIPMENT. READ ALL INSTRUCTIONS BEFORE OPERATING THIS PRESSURE WASHER AND ESPECIALLY POINT OUT THE "SAFETY WARNINGS" TO PREVENT THE POSSIBILITY OF PERSONAL INJURY TO THE OPERATOR. DO NOT USE SOLVENTS WITH THIS PRESSURE WASHER. YOUR PERSONAL SAFETY AS WELL AS THE FUNCTION OF THE EQUIPMENT IS AT STAKE.

GASOLINE ENGINE PRECAUTIONS:

1. Follow **ALL** handling, operation, maintenance, and safety instructions listed in the Engine Operator's Manual that accompanies this unit and PROVIDE SUCH INFORMATION to **ANYONE** who will be operating this unit.
2. **NEVER** fill fuel tank while engine is running or hot. **DO NOT** smoke! **DO NOT** refuel indoors or in a poorly ventilated area. Avoid the possibility of spilled fuel causing fire. Always refuel slowly to avoid spillage.
3. **NEVER** operate engine in a closed building unless the exhaust is piped outside. The exhaust contains carbon monoxide, a poisonous, odorless, and invisible gas, which if breathed can cause serious injury, illness and possible death.
4. **NEVER** make adjustments on machinery while it is connected to the engine without first removing the ignition cable from the spark plug. Turning over the machinery by hand during adjustment or cleaning might start the engine and machinery with it, causing serious injury to the operator.
5. **NEVER** operate this machine in the presence of flammable vapors or combustible dust, gases or other combustible materials to prevent the possibility of explosion or fire. When servicing this unit, be especially careful to properly dispose of any flammable materials. **DO NOT** spray flammable liquids.
6. **DO NOT** operate the unit if gasoline is spilled. Move the unit away from the spill and avoid creating any ignition until the gasoline has evaporated.
7. **NEVER** run the engine with governor disconnected, or operate at excessive speed.
8. Avoid contacting the engine muffler to prevent the possibility of burns.
9. **DO NOT** store the unit near an open flame or any equipment such as a stove, furnace, water heater, etc., which utilize a pilot light or devices which can create a spark.

IMPORTANT

The following is required by California State law, Section 4442 of the California Public Resources Code. Other state may have similar laws. Federal laws apply on federal lands.

A spark arrester must be added to the muffler of this engine if it is to be used on any forest covered, brush covered or grass covered unimproved land. The arrester must be maintained in effective working order by the operator.

Spark arrester is standard equipment only on KW-2800G.

GENERAL & SERVICE INFORMATION

GENERAL INFORMATION

Your machine has been especially engineered and manufactured to give the maximum performance in cleaning large areas.

With careful maintenance, according to the instructions outlined in the following pages, a high standard of operation throughout will be insured.

Carefully inspect all components to insure that there is no concealed freight damage. If such damage is discovered, file a "damage report" immediately with the delivering carrier.

The contents of this manual are based on the latest product information available at the time of publication. The right is reserved to make changes at any time without notice in price, color, materials, equipment, specifications, or models.

SERVICE INFORMATION

To obtain consistent performance over the life of your machine, read through these instructions and keep them handy for future reference. If you require service, contact the dealer from whom the machine was purchased, or the local authorized Kent service agency. Always refer to your Kent limited warranty for complete service information.

The model, type and serial number are indicated on the data plate. For prompt and complete information, always refer to these numbers when inquiring about service.

THE KENT CO.		
ELKHART INDIANA USA		
SERIAL NO.		MODEL
VOLTS	PHASE	Hz
MOTOR 1	AMP	Hz
MOTOR 2	AMP	Hz

Write the model and serial number of your unit in the space provided. Refer to the rating plate on unit.	
MODEL #	SERIAL #
Retain this owner's manual for future reference.	

PREPARATION & INSTALLATION INSTRUCTIONS

INSTALLATION:

1. Check engine oil level.

-Briggs & Stratton engines will need to have oil added before initial use.

-Honda engines will need to have the oil level checked before initial use.

2. Check pump oil level.

Check the oil sight glass window on the pump crankcase before each use. Make certain the oil is at the proper level indicated by the dot on the oil sight glass.

3. Place the unit on a level surface to insure proper lubrication for the water pump while operating.

CAUTION: DO NOT place the unit in an area where flammable gas vapors may be present. A spark could cause an explosion or fire.

4. **DO NOT** leave the unit exposed to rain, snow or freezing temperatures when not in use. (Refer to Winterizing section pg. 15).

ATTIRE:

Protect eyes, ears, and skin by utilizing whatever means necessary. Proper attire is essential to your safety.

WATER SUPPLY:

1. **Water supply hose** should be connected to the inlet of the unit. Connect the other end of the hose to your pressurized water supply. (**NOTE:** Supply hose should be at least 5/8" (KW-2000G) and 3/4" (KW-2800G) inside diameter (ID) and no longer than 50 feet.)

2. **Inlet water pressure** to the unit must be:

-A minimum of 20 PSI

-A maximum of 125 PSI

-The flow must be at least 4 GPM

(KW-2000G) and 4.5 GPM (KW-2800G)

-Incoming water temperature should not exceed 135° F (57.2° C).

3. **High pressure discharge hose** should be screw-connected (KW-2000G) or quick connected (KW-2800G) to the washer.

Make certain that all connections are securely tightened together and trigger gun is locked in the OFF position.

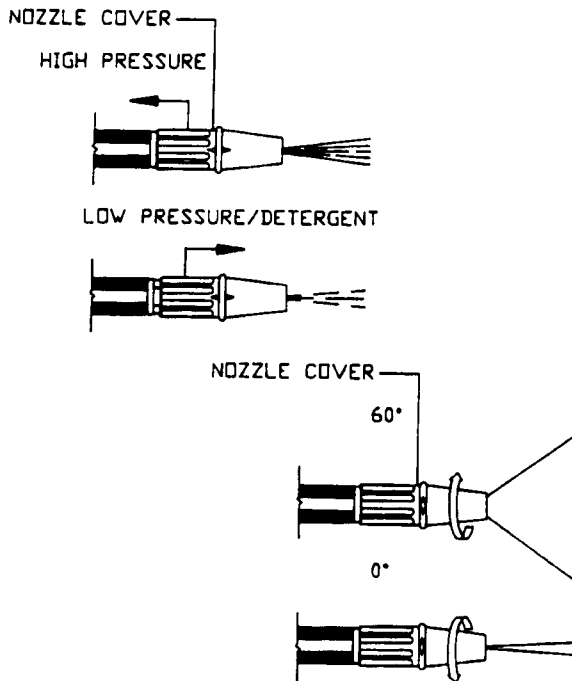
PREPARATION & INSTALLATION INSTRUCTIONS

ADJUSTABLE NOZZLE REVIEW:

The Adjustable Spray Pattern Nozzle has two functions:

1. **Select high and low pressure** by locking the gun in the "OFF" position. Pull the collar (KW-2000G) or nozzle cover (KW-2800G) at the end of the wand "TOWARD" the gun for the High Pressure setting, and push the collar "AWAY" from the gun for Low Pressure detergent application.
2. **Adjust spray pattern** from 0° to 65° by rotating the nozzle at the end of the wand in a clockwise and counter-clockwise direction

**FIGURE 1
ADJUSTABLE NOZZLE**



FUEL:

1. Fill fuel tank.

CAUTION: DO NOT fill fuel tank while engine is running or hot. Allow engine to cool 2 minutes before refueling.

DO NOT fill fuel tank to point of overflowing. Allow approximately 1/4 inch of tank space for fuel expansion.

2. **A minimum of 86 octane** is recommended for use with this unit. **DO NOT MIX OIL WITH GASOLINE.**
3. **Purchase fuel in quantities** that may be used within 30 days. Use of clean, fresh, **lead-free gasoline** is recommended. (Leaded gasoline may be used if lead-free is unavailable.) **DO NOT** use gasoline containing methanol or alcohol.
4. **Store gasoline** away from engine while unit is running.

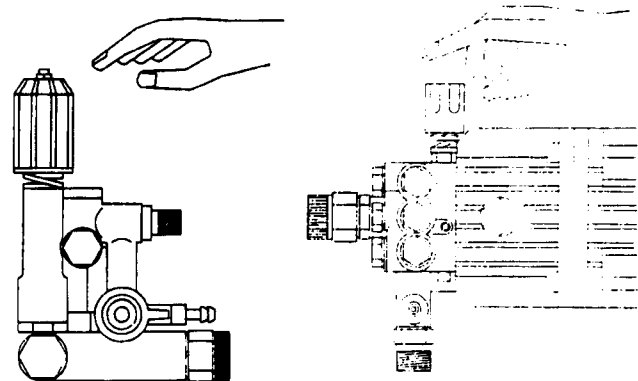
*Refer to Engine manual supplied with this unit for additional recommendations.

UNLOADER

1. **Adjust the pressure** by turning the unloader valve on your unit. To reduce pressure, simply turn the adjustment knob counter-clockwise. **DO NOT OVERTIGHTEN!**

KW-2000G UNLOADER

KW-2800G UNLOADER



OPERATING INSTRUCTIONS

START-UP

1. **Lock the trigger gun** in the OFF position. Trigger gun should always be locked in the OFF position when not in use.
2. **Turn on the water** supply after ensuring all connections are secure.
3. **Point the trigger gun away** from yourself or anyone else and adjust to low pressure mode. Squeeze the trigger.

Hold gun open while starting engine.

This purges any air or mineral deposits from the entire system. Start engine as directed below.

Honda® engine start-up:

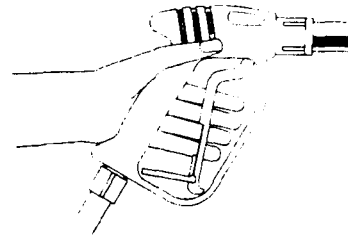
(SEE HONDA ENGINE OVERVIEW)

1. FUEL VALVE should be moved to the right to turn on fuel supply.
 2. CHOKE LEVER (Ref 3) should be moved to the left to close the choke. (Once the engine has started, move choke lever back to the right.)
 3. THROTTLE LEVER should be moved slightly to the left. (Once the engine has started, move throttle lever completely to the left.
 4. The ON/OFF switch should be moved to the ON position.
 5. The STARTER GRIP should be grasped and pulled slowly until resistance is felt. Once this is achieved, pull cord rapidly.
4. **Release the trigger** and lock in "OFF" position. Adjust nozzle to high or low pressure and adjust the pressure to the desired setting by turning the pressure adjustment knob **clockwise**. Open trigger gun to spray, and release trigger to stop.

Honda engine shut-down:

1. THROTTLE LEVER should be moved completely to the right.
2. ON/OFF switch should be moved to the OFF position.
3. FUEL VALVE should be moved to the closed position.

GUN LOCK



Optional Vanguard® engine start-up:

(SEE VANGUARD OVERVIEW)

1. FUEL VALVE should be moved horizontally to turn on fuel supply.
2. CHOKE LEVER should be moved to the left to close the choke. (Once engine has started, move choke lever back to the right.)
3. CONTROL/THROTTLE LEVER should be moved completely to the right to set engine to fast for start-up.
4. THE ON/OFF SWITCH displays both a vertical line and a circle. The vertical line indicates "ON" and the circle signifies "OFF". Push the switch to the "ON" position.
5. The STARTER GRIP should be grasped and pulled slowly until resistance is felt. Once this is achieved, pull cord rapidly.

Upon starting engine, move to Step 4, left.

Optional Vanguard engine shut-down:

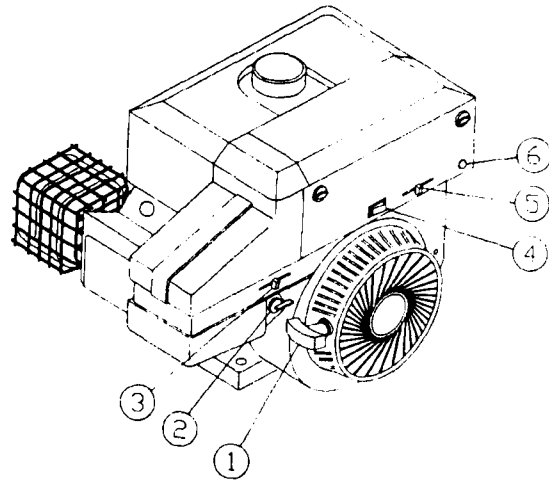
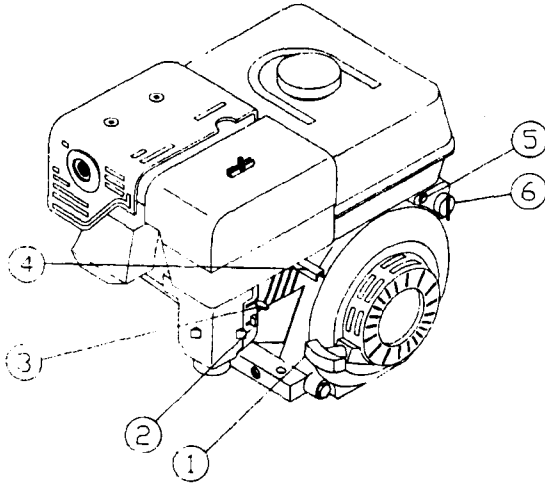
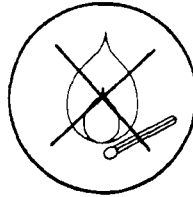
1. CONTROL/THROTTLE LEVER should be moved completely to the left to set engine to slow.
2. ON/OFF SWITCH should be moved to the "OFF" position.
3. FUEL VALVE should be turned vertically to turn fuel OFF.

DO NOT close choke to stop engine. Backfire or engine damage may result if choke is used to stop engine.

OPERATING INSTRUCTIONS

HONDA® ENGINE OVERVIEW

OPTIONAL VANGUARD® ENGINE OVERVIEW



HONDA ENGINE LISTING

- 1..... Starter grip
- 2..... Fuel valve
- 3..... Choke lever
- 4..... Throttle lever
- 5..... Oil Alert® light
- 6..... On/Off switch

CHECK OIL LEVEL BEFORE EACH USE!

Refer to Honda Engine manual for specifications and procedures

OPTIONAL VANGUARD ENGINE LISTING

- 1..... Starter grip
- 2..... Fuel valve
- 3..... Choke lever
- 4..... On/Off switch
- 5..... Control/Throttle lever
- 6..... Oil Gard® light

CHECK OIL LEVEL BEFORE EACH USE!

Refer to Vanguard Engine Manual for specifications and procedures.

OPERATING INSTRUCTIONS

CLEANING WITH DETERGENT FEATURE

1. **Prepare detergent solution** according to label directions.
2. **Adjust the amount** of detergent desired, by locating the adjustment knob at the end of the clear vinyl hose near the pump head. Turn the knob completely counter-clockwise to set at maximum siphon rate.
3. **Immerse the strainer** into the detergent solution to allow detergent to siphon. Push the collar "AWAY" from the gun with the trigger gun locked in the "OFF" position.
4. **Start the unit** as directed in the "OPERATION" procedure outlined earlier.
5. **Trigger the gun.** In a few moments a detergent/water mixture will exit the **low pressure nozzle.**
6. **Apply the solution** by spraying the lower portion of the surface being cleaned and move up, using long overlapping strokes. Applying from the bottom up helps avoid streaking. **DO NOT** allow detergent solution to dry on surface.
7. **To rinse,** pull the collar (KW-2000G) or nozzle cover (KW-2800G) toward the gun and rotate the nozzle to the desired spray pattern. It will take approximately 30 seconds to purge all detergent from the line.
8. **For best rinsing results,** start at the top and work down.
9. **Siphon a gallon of water** through the low pressure detergent injection system after each use. This prevents the possibility of corrosion or detergent residue causing mechanical problems during the next use.

SHUT-DOWN

IMPORTANT: For both safety and mechanical reasons, you must follow the procedures outlined below:

1. **Run one gallon** of clean water through the detergent line.
2. **Turn unit "OFF".**
3. **Turn water supply "OFF".**
4. **Trigger gun** momentarily to relieve any trapped pressure.
5. **Disconnect and store** hoses.

INSPECTION PROCEDURES

Inspect the following before and after starting the unit:

Check oil level in pump.

Inspect inlet water strainer.

Inspect for system water leaks.

Inspect for oil leaks.

Inspect high pressure hose for kinking, cuts or leaks.

STORAGE & MAINTENANCE

WINTERIZING:

IMPORTANT: Always store your unit in an area where the temperature will not fall below 32°F. The pump may be permanently damaged if frozen.

FREEZE DAMAGE IS NOT COVERED BY WARRANTY

If you must store the unit in an environment where the temperature may fall below 32°F, you can protect your unit from the chance of damage by following the procedure outlined below:

1. **Turn off water supply** and shut the unit "OFF". Squeeze the trigger to release any remaining pressure in the gun and hose. Detach both the water inlet hose and the High Pressure hose from the unit and drain.
2. **Restart the unit** and run until water no longer discharges from the high pressure outlet (about five (5) seconds)
3. **Disconnect and store** the High Pressure hose, gun and wand.

NOZZLE MAINTENANCE:

Nozzle orifices should be kept clean and free from obstructions. If the nozzle becomes clogged, the pump pressure will become too high. Should this occur, the nozzle must be cleaned immediately.

Nozzle orifices should be replaced whenever pressure is less than 85% of maximum. Water flow through the spray nozzle will erode the orifice, making it larger, resulting in a pressure loss. The frequency of replacement will depend upon such variables as mineral content in water and number of hours used.

TO CLEAN NOZZLE ORIFICE:

1. **Disconnect** the wand from the gun.
2. **Insert the nozzle cleaner** into the nozzle and rotate. (See Figure 4A, below.)

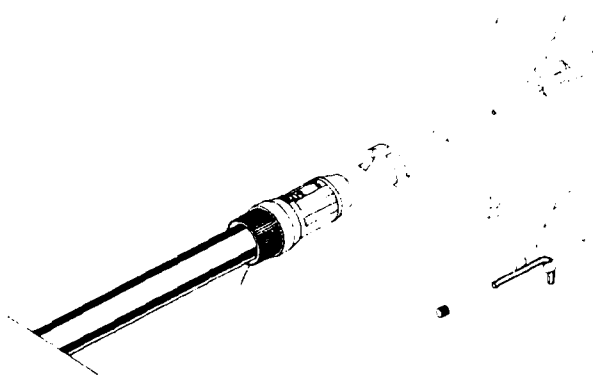
CAUTION: For safety reasons, the wand **MUST** be disconnected from the gun when using the nozzle cleaner. Personal injury could result if this procedure is not followed.

3. **Flush the nozzle** with water.
4. **Reconnect** the wand and gun assembly.
5. **Turn the unit "ON"** and squeeze the trigger to begin spraying. Adjust spray pattern to 0°. If pattern is still distorted, repeat steps 1-4.
If you are unable to thoroughly clean the nozzle using this procedure, then the nozzle KW-2000G or nozzle-lance KW-2800G must be removed/replaced.

TO REMOVE OR REPLACE NOZZLE: (KW-2000G ONLY)

1. **Insert a 2.5 mm allen wrench** into the nozzle.
2. **Rotate the wrench** counter-clockwise to remove the nozzle (Figure 4B, below).
3. **Inspect the nozzle** and clean or replace before re-inserting.

**FIGURE 4
NOZZLE MAINTENANCE**



STORAGE & MAINTENANCE

GENERAL MAINTENANCE

1. There is a water screen at the water intake on the unit. It should be inspected, removed and cleaned before each use.
2. **ALWAYS** follow the "SHUT-DOWN" procedures outlined in this manual.
3. **DO NOT** allow unit to operate in bypass mode (with trigger closed) for more than one (1) minute without triggering the gun.
4. **NEVER** allow the unit to operate without incoming water line attached and the water supply turned all the way on. Incoming water pressure should **NOT** exceed 125 PSI and incoming water temperature should not exceed 135° F (57.2° C).
5. **DO NOT** store the unit in a freezing environment. This can cause "lock-up" conditions in the water pump. Never pour hot water on a frozen pump. If storage in freezing conditions is necessary, follow the winterizing procedures on pg. 15 of this manual.
6. **DO NOT** operate unit in places with insufficient ventilation. **DO NOT** operate the unit if there is evidence of oil or gasoline leaks.
7. **NEVER** spray water directly on the unit or store the unit outdoors where it can be exposed to rain or other adverse weather conditions.
8. **DO NOT** make repairs while unit is running.
9. **NEVER** pump acids, alkaline, or abrasive fluids through the unit.
10. Be careful to keep hoses away from the muffler or gasoline engine to prevent the possibility of bursting.
11. Be cautious when using the straight narrow stream. It is **NOT** recommended for use on painted or wood surfaces, OR items attached with an adhesive backing.

SPECIFIC MAINTENANCE:

ENGINE:

Extend the work life of your engine by following the engine manufacturers recommendations. The engine instructions that accompany your unit detail specific procedures for maintenance of the engine.

PUMP:

Change the pump oil after the first 25 hours of operation. After initial change, 250 hour intervals are recommended. If oil appears dirty or milky, changes may be required in greater frequency. Use SAE 30 and fill only to the dot on the oil sight glass. **DO NOT** overfill.

HOSE:

Inspect high pressure hoses daily for signs of wear. If evidence of failure exists, promptly replace all suspect hoses to prevent the possibility of injury from high pressure spray.

WATER STRAINER CLEANING:

Periodic cleaning of the water strainer is one easy way to prevent pump problems. As a strainer becomes obstructed, it restricts proper flow of water to the pump. This can result in cavitation which will cause premature failure of pump packings. Using a small screw driver, remove screen and clean.

QUICK COUPLERS: (KW-2800G ONLY)

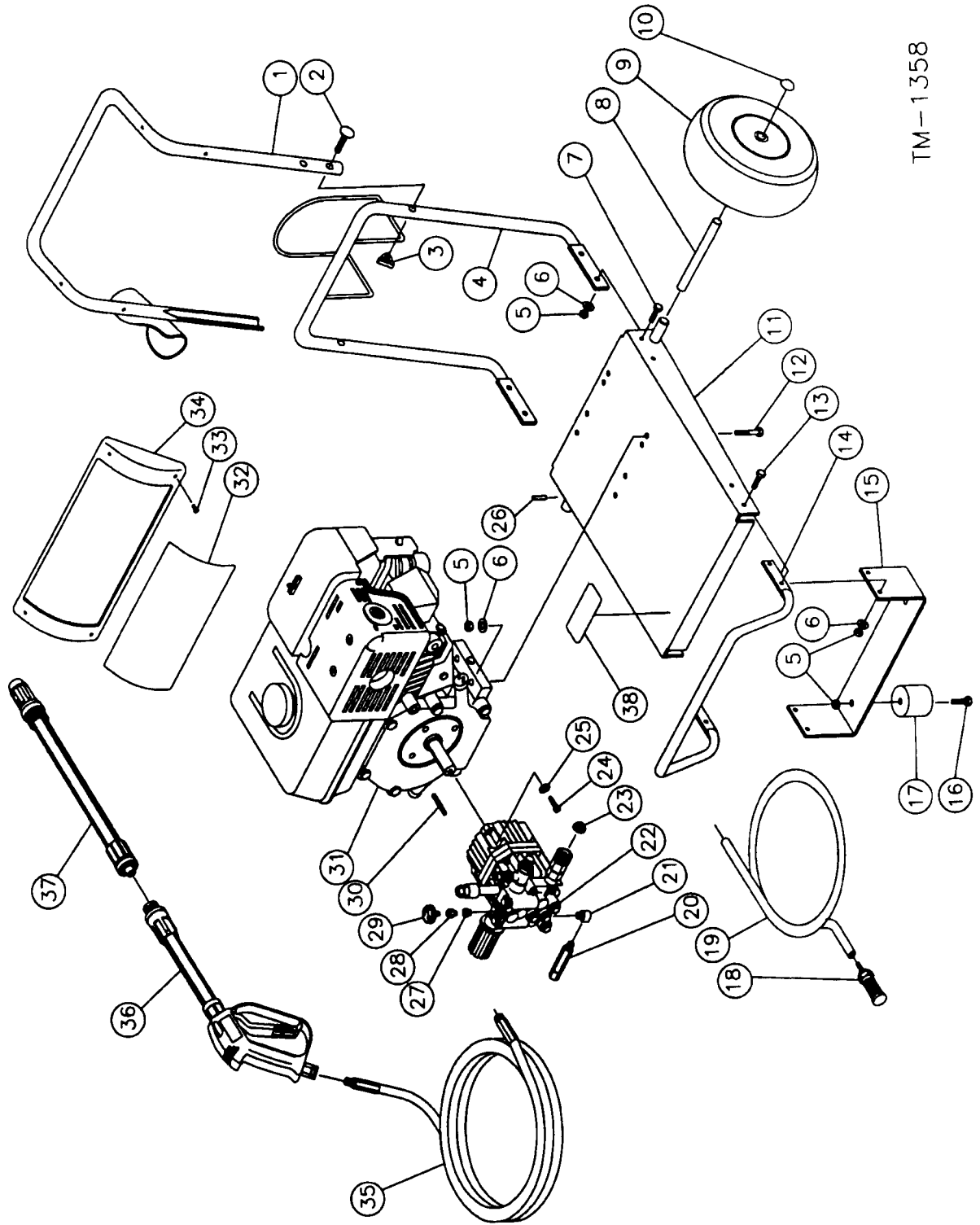
There is an o-ring seal inside the female quick coupler. This o-ring will deteriorate or be blown out occasionally if the unit is allowed to pump without the hose attached. Simply insert a replacement o-ring to correct the leak.

Service Diagnosis - Faults & Repair

PROBLEM	PROBABLE CAUSE	REMEDY
<p>No discharge at nozzle when trigger is squeezed.</p> <p>Low or fluctuating pressure.</p>	<p>Inadequate water supply.</p> <p>Kink in water inlet hose OR High Pressure hose.</p> <p>Water inlet screen obstructed.</p> <p>Pump sucking air.</p> <p>"High Pressure" spray mode not engaged.</p> <p>Obstructed or worn nozzle.</p> <p>Bypass valve not adjusted to High Pressure.</p>	<p>Ensure hose diameter is 3/4" for KW-2800G and incoming water supply is turned on.(5/8" for KW-2000G)</p> <p>Remove kink.</p> <p>Remove screen. Clean or replace as necessary.</p> <p>Tighten all water intake connections. Eliminate leaks in intake line.</p> <p>Pull nozzle cover TOWARD gun to engage.</p> <p>Clean orifice or replace with new correctly sized orifice and lance assembly. See Nozzle Mtnc.)</p> <p>Adjust accordingly. Refer to Unloader Preparation instructions.)</p>
<p>Detergent will not siphon into "Low-Pressure" injection.</p>	<p>Detergent strainer not submerged in solution.</p> <p>Detergent strainer obstructed.</p> <p>Detergent hose cut, obstructed or kinked.</p> <p>Detergent adjusting knob turned to closed position.</p> <p>Low Pressure spray mode not engaged.</p> <p>Injector ball locked to o-ring.</p>	<p>Ensure strainer screen is submerged into detergent.</p> <p>Inspect, clean or replace as necessary.</p> <p>Inspect hose, clean or replace as necessary.</p> <p>Open adjusting knob. (See Cleaning with Detergents.)</p> <p>Push nozzle or nozzle cover "AWAY" from gun.</p> <p>Run warm water through injector line.</p>
<p>Water flows back into detergent container.</p>	<p>Ball and spring in venturi reversed, missing or corroded.</p>	<p>Remove and clean or replace as necessary.</p>
<p>Pump oil appears milky or foaming.</p>	<p>Water in oil.</p>	<p>Change pump oil, fill to proper level. (See Specific Mtnc./Pump.)</p>
<p>Oil leaking from unit.</p>	<p>DO NOT USE!</p>	<p>Contact the Authorized Service Center nearest you.</p>

CONTACT CUSTOMER SERVICE WITH ANY ADDITIONAL QUESTIONS.

KW-2000G

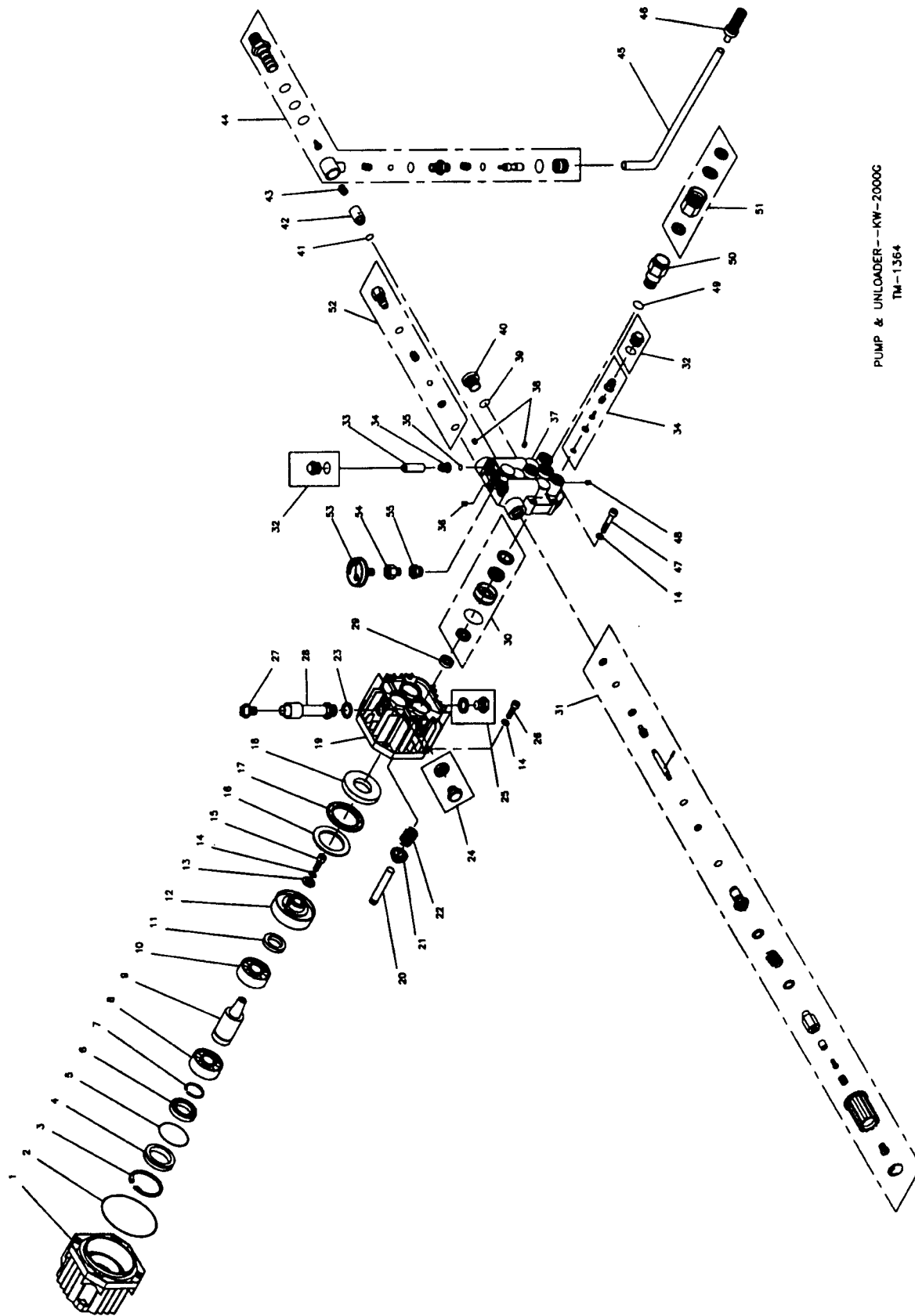


TM-1358

KW-2000G ASSEMBLY

DET PART NO.	DESCRIPTION	QUANT
20	M22-0148 VALVE,HEAT DUMP--20G,MMPW	1
21	M23-0014 ELBOW,BRASS--20G,MMPW	1
22	M3-0104 PUMP,PRESSURE--20G,MMPW	1
23	M19-0001 FILTER,WATER--INLET,MMPW	1
24	M27-0847 SCR,PUMP--MMPW	2
25	M29-0007 WSHR,LOCK--PUMP,MMPW	2
26	M43-0002 PIN,ROLL--MMPW	1
27	M23-0190 PLUG,VALVE--MMPW	1
28	M23-0093 FITTING--PRESSURE GAUGE,MMPW	1
29	M22-0107 GAUGE,PRESSURE--MMPW	1
30	M43-0073 KEY,ENGINE--5.5HP,20G,MMPW	1
31	M1-0013 ENGINE,HONDA--5.5HP,MMPW	1
32	M34-0491 LABEL,WARNING/NAME--MMPW	1
33	M27-3049 SCR--PLASTIC PLATE,MMPW	4
34	M62-0084 PLATE,PLASTIC--LABEL,MMPW	1
35	M15-0133 HOSE,HP--20G,23FT,MMPW	1
36	M16-0167 ASM,SPRAY GUN--20G,MMPW	1
37	M16-0173 ASM,VARIABLE NOZZLE--MMPW	1
38	M34-0493 LABEL,MODEL--KW2000G PW	1

DET PART NO.	DESCRIPTION	QUANT
1	M7-0106 HANDLE,REAR TOP--20G,28G,MMPW	1
2	M31-0051 SCR,CARRIAGE--HANDLE,MMPW	2
3	M7-0107 KNOB,HANDLE--20G,28G,MMPW	2
4	M7-0108 HANDLE,REAR--20G,28G,MMPW	1
5	M30-0157 NUT,HEX LOCK--MMPW	14
6	M28-0003 WSHR FLT--20G,MMPW	12
7	M27-0066 SCR--REAR HANDLE--MMPW	4
8	M20-0004 ROD,AXLE--20G,28G,MMPW	1
9	M14-0017 WHEEL--20G,28G,MMPW	2
10	M33-0018 CAP,HUB--MMPW	2
11	M5-0103 PLATE,BASE--MMPW	1
12	M27-0070 SCR--ENGINE,MMPW	4
13	M27-0067 SCR--FRONT HANDLE,MMPW	4
14	M7-0103 HANDLE,FRONT--20G,28G,MMPW	1
15	M13-0112 BRACKET,UNDER FRAME--MMPW	1
16	M27-0068 SCR--RUBBER FOOT,MMPW	2
17	M14-0008 FOOT,RUBBER--MMPW	2
18	M19-0050 STRAINER,DETERGENT--MMPW	1
19	M15-0021 HOSE,DETERGENT--20G,28G,MMPW	1



PUMP & UNLOADER--KW-2000C
TM-1354

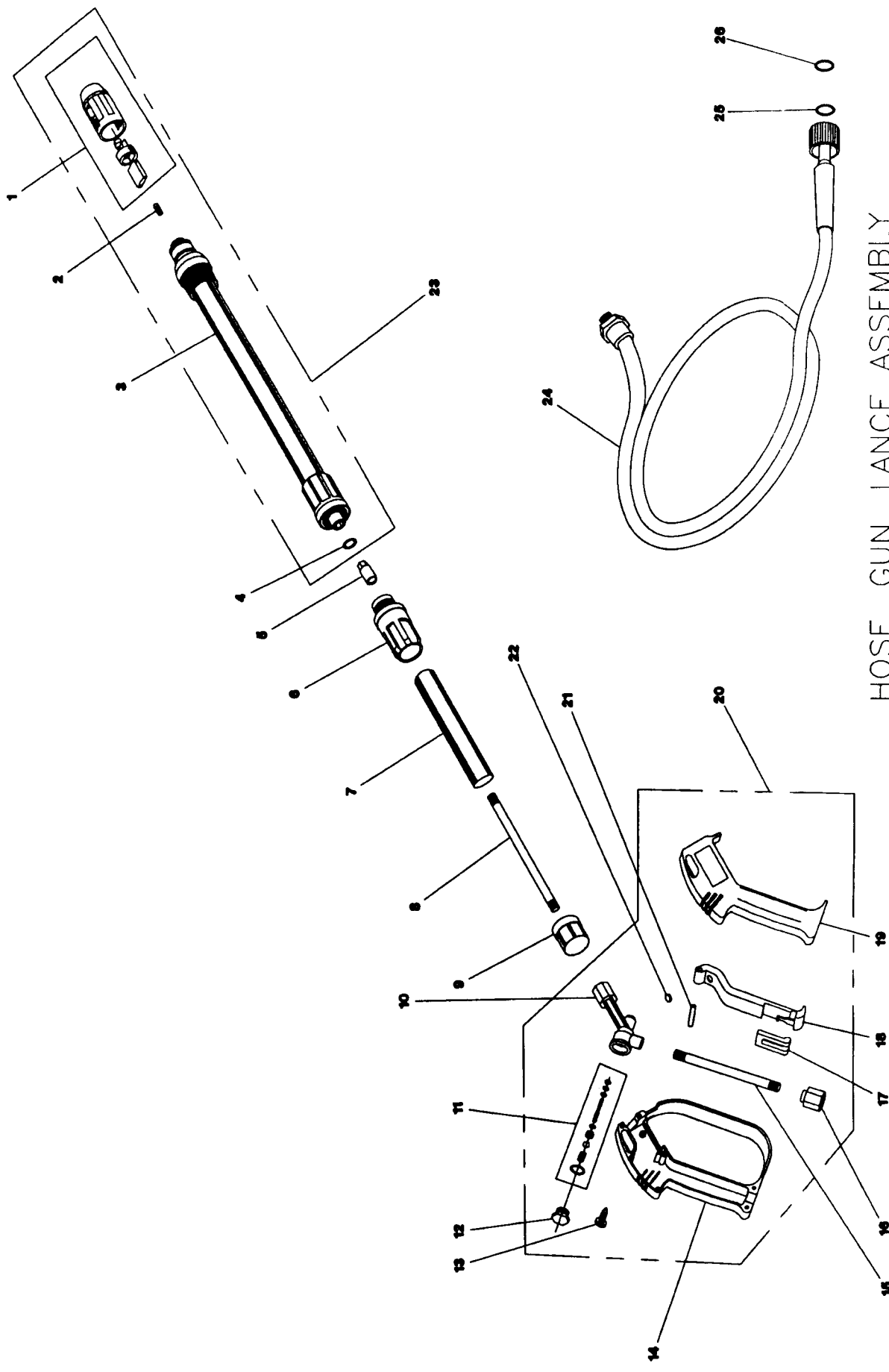
KW-2000G PUMP & UNLOADER ASSEMBLY

DET PART NO.	DESCRIPTION	QUANT
29	M26-0163 SEAL,OIL--1015W,MMPW	1
30	M46-0579 KIT,PACKING--PUMP,MMPW	3
31	M46-0474 ASM,PRES REG--1015W,MMPW	1
	M70-0004	
32	M46-0478 PLUGS,MANIFOLD--MMPW	5
33	M46-0359 SPACER,VALVE--MANIFOLD,MMPW	6
34	M46-0376 KIT,VALVE--UNLOADER,MMPW	1
36	M27-8822 SCREW,SET--UNLOADER,MMPW	1
37	M46-0577 HEAD,MANIFOLD--MMPW	1
38	M27-8821 SCREW--MMPW,PUMP	2
39	M25-0273 O-RING--UNLOADER,MMPW	1
40	M39-0072 PLUG,MANIFOLD--KW2000G	1
41	M25-0278 O-RING--UNLOADER,MMPW	1
42	M46-0465 VALVE,NO RETURN--KW2000G	1
43	M49-0086 GARDEN HOSE SWIVEL--KW2000G	1
44	M46-0476 INJECTOR,DETERGENT--KW2000G	1
45	M15-0021 HOSE,DETERGENT--20G,28G,MMPW	1
46	M19-0050 STRAINER,DETERGENT--MMPW	1
47	M27-8194 SCR,METRIC--1015W,MMPW	1
48	M27-8198 SCR,METRIC--1015W,MMPW	1
49	M25-0273 O-RING--UNLOADER,MMPW	1
50	M23-0188 CONNECTOR,INLET--MMPW	1
51	M23-0186 CONNECTOR,GARDEN HOSE--MMPW	1
52	M46-0479 KIT,VALVE--1015H,MMPW	1
53	M22-0107 GAUGE,PRESSURE--MMPW	1
54	M23-0093 FITTING--PRESSURE GAUGE,MMPW	1
55	M23-0190 PLUG,VALVE--MMPW	1

DET PART NO.	DESCRIPTION	QUANT
1	M52-0028 FLANGE,ENGINE--KW2000G	1
2	M25-0243 O-RING,METRIC--1015H,MMPW	1
3	M46-0405 C CLIP,PUMP--MMPW	1
4	M46-0425 SEAL,OIL--MMPW	1
5	M25-0227 O-RING,PUMP--MMPW	1
6	M46-0407 SPACER,PUMP--KW2000G	1
7	M46-0406 C CLIP,PUMP--KW2000G	1
8	M48-0036 BEARING,PUMP--KW2000G	1
9	M46-0427 SHAFT,PUMP--KW2000G	1
10	M48-0037 BEARING--KW2000G	1
11	M46-0468 WASHER,PUMP--KW2000G	1
12	M46-0467 DISC,WOBBLE--KW2000G	1
13	M28-0133 SUPPORT,LOCKING--1015W,MMPW	1
14	M29-0055 WASHER,PUMP--MMPW	5
15	M27-8432 SCREW,PUMP--MMPW	1
16	M48-0035 DISC,BEARING--1015W,MMPW	1
17	M48-0030 BEARING,NEEDLE--1015W,MMPW	1
18	M48-0032 DISC,BEARING--1015W,MMPW	1
19	M46-0426 HOUSING,PUMP--KW2000G	1
20	M46-0578 PISTON,PUMP--KW2000G	3
21	M46-0362 RETAINER,SPRING--1015W,MMPW	3
22	M49-0081 SPRING--1015W,MMPW	3
24	M46-0404 GLASS,OIL SIGHT--MMPW	1
25	M46-0398 KIT,OIL DRAIN PLUG--MMPW	1
26	M27-8194 SCR,METRIC--1015W,MMPW	4
27	M39-0066 CAP,OIL--MMPW	1
28	M46-0351 EXTENSION--OIL PORT,MMPW	1

24) M70-0003

24) M70-0175 = 1/4"
24) M70-0090 = 3/8"



HOSE, GUN, LANCE ASSEMBLY
TM-1370

KW-2000G HOSE, GUN, LANCE ASSEMBLY

DET PART NO.	DESCRIPTION	QUANT
1	M16-0203 KIT, ANGLE REGULATOR—MMPW	1
2	M18-0227 NOZZLE—,055 ORIFICE,MMPW	1
3	M16-0173 ASM,VARIABLE NOZZLE—MMPW	1
4	M25-0259 O-RING,METRIC—MMPW	1
5	M17-0031 CONNECTOR,QUICK—FEMALE,MMPW	1
6	M16-0181 CONNECTOR,SCREW—PLSTC,MMPW	1
7	M62-0063 PROTECTOR,WAND—PLSTC,MMPW	1
8	M21-0089 PIPE—SS,MMPW	1
9	M16-0182 CONNECTOR,GUN & WAND—MMPW	1
10	M23-0183 HOUSING,GUN—MMPW	1
11	M16-0198 KIT,GUN REPAIR—MMPW	1
12	M23-0175 PLUG,GUN—MMPW	1
13	M27-8382 SCR,METRIC—GUN,MMPW	7

DET PART NO.	DESCRIPTION	QUANT
14	M16-0189 COVER,GUN—LH,MMPW	1
15	M21-0095 PIPE,HANDLE—GUN,MMPW	1
16	M23-0174 NIPPLE,GUN—2000G,MMPW	1
17	M16-0188 LOCK,TRIGGER SAFETY—GUN,MMPW	1
18	M16-0187 TRIGGER—SPRAYGUN,MMPW	1
19	M16-0185 COVER,GUN—RH,MMPW	1
20	M16-0191 ASM,SPRAYGUN—2000G,MMPW	1
21	M43-0069 PIN,TRIGGER—SPRAYGUN,MMPW	1
22	M16-0186 TRIGGER REST—SPRAYGUN,MMPW	1
23	M16-0173 ASM,VARIABLE NOZZLE—MMPW	1
24	M15-0133 HOSE,HP—20G,23FT,MMPW	1
25	M25-0258 O-RING,METRIC—SPRAYGUN,MMPW	1

THE KENT LIMITED WARRANTY

Your Kent equipment which has been manufactured, tested and inspected in accordance with carefully specified engineering requirements, is warranted to be free from defects in material and workmanship. This warranty is, however, subject to the following qualifications, conditions, and limitations which are set forth to provide you and all users of the Kent equipment with information concerning the duration, extent, availability, and applicability of this Kent limited warranty, the procedure to be taken to obtain its performance, and other information concerning the Kent warranty policy.

The Kent Limited Warranty is extended to the original end user as follows:

KW Series pressure washers 1 year parts replacement and service labor warranty. Normal wear parts including hoses, gaskets, pump seals and nozzles guaranteed against defects for a period of 60 days from date of sale. Honda engines are warranted by American Honda Co., Inc. for a period of 1 year.

Replacement parts guaranteed for 90 days from date of installation against defects in material and workmanship.

The 10 year poly component replacement warranty with 1 year service labor extends for a period of ten (10) years from the date of the original purchase of the Kent equipment by the original purchaser. This warranty will not cover damage attributable to the following:

- (1) Improper, unreasonable or negligent use or abuse of the equipment.
- (2) Use of equipment with hot water or high temperature above 130 degrees Fahrenheit (54 degrees centigrade).
- (3) "Warpage", "Creepage", or "Distortion" of part so long as the same does not interfere with normal operation.
- (4) Abrasions or punctures of the equipment.

The start date of the warranty coverage shall be the purchase date of the original end user or six months from the date the machine was shipped from the factory, whichever comes first.

PARTS OF KENT EQUIPMENT NOT COVERED BY WARRANTY

Certain parts of Kent equipment require replacement in the ordinary course of use due to normal wear by reason of their characteristics. These are normal wear items such as cords, gaskets, switches, bumpers, carbon brushes, handle grips, bags, hoses, bearings, etc.

EXCEPTIONS AND EXCLUSIONS FROM WARRANTY

This equipment is required to be used on electric current as indicated on the data plate. Otherwise damage, defects, malfunctions or other failures of the equipment arising from use on electric current not as indicated are excepted and excluded from this warranty. Defects, malfunctions, failure or damage of the equipment caused by improper, unreasonable or negligent use or abuse while in the possession of the purchaser are likewise excluded from this warranty. If repair is done on your equipment by anyone other than those designated as authorized to perform such work without first having obtained factory instructions, The Kent Company, at its sole option, may determine that this warranty will not apply and that reimbursement for such repair will not be made because of the failure to comply with such factory specified instructions.

PROCEDURE TO BE TAKEN TO OBTAIN PERFORMANCE OF WARRANTY REPAIR

To secure repair of the equipment or any warranted parts under this warranty, the following procedure should be taken. The inoperative equipment or warranted parts, together with satisfactory evidence of the purchase date, must be delivered, with shipping and delivery charges prepaid, to one of the following:

- (1) The dealer from whom purchased;
- (2) Any Kent distributor's service department in the United States;
- (3) Any Kent authorized service station in the United States.

If you are unable to locate any of the foregoing, you may write or otherwise communicate with The Kent Company for instructions before repair service is performed by anyone else. In such event, The Kent Company will provide either the location of a closely available Kent distributor service department or Kent authorized service station or other factory instructions. Upon compliance with the above procedure, all warranted defects will be repaired, at no additional charge or costs to the customer, and the repaired product returned to the customer, with all shipping and delivery charges prepaid. In following the procedures above set forth, PLEASE MAKE CERTAIN to state the Kent model, type and serial number as shown on the data plate of the equipment.

REPLACEMENT

In the event of a defect, malfunction or failure of your Kent equipment or any warranted part to conform with this warranty, The Kent Company may, at its sole option and own expense, replace the equipment or any warranted part with another new identical or reasonably equivalent model or part in lieu of repairing the defect.

NO REFUND OF PURCHASE PRICE

The Kent Company will not, as a matter of its warranty policy, refund the customer's purchase price.

WARRANTY REGISTRATION CARD FOR YOUR KENT EQUIPMENT AND REQUEST FOR INFORMATION

Your Kent Company distributor from whom you purchased your equipment is responsible for the registration of your warranty with the factory. We ask that you cooperate with your distributor in supplying the necessary information on the warranty card so that we may better serve you. Any information or questions you may have concerning your Kent equipment or this warranty may likewise be secured from the factory. This warranty gives you specific legal rights, and you may also have other rights which vary from state to state.

THE KENT COMPANY

P.O. BOX 1665 ELKHART, INDIANA 46515