



Electronic Service Manuals

This electronic document is provided as a service to our customers. We do not create the contents of the information contained in this document. Should you have detailed questions pertaining to the information contained in this document, you may contact Michco, or the manufacturer which provided the original information in this electronic deliverable. Michco's only part in this electronic deliverable was the electronic assembly process.

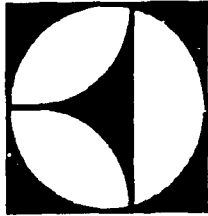
You may contact Michco through the following methods:
Phone (517) 484-9312 or (800) 331-3339 MI, OH, IN only
2011 N. High St. -- Lansing, Michigan -- 48906
Fax: (517) 484-9836
Email: CustServ@Michco.com
Web site: www.Michco.Com
Parts Web site: www.FloorMachineParts.Com

Order Parts on Line at:
www.FloorMachineParts.Com

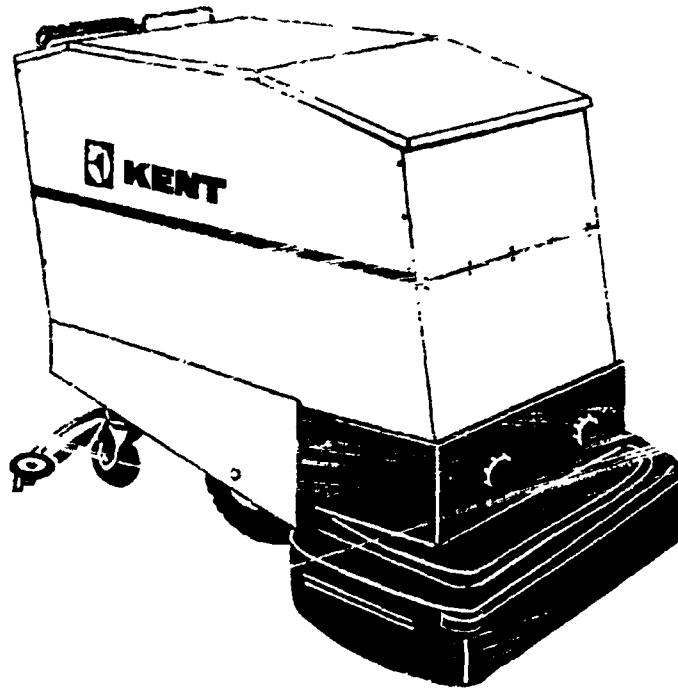
Directly to Parts & Service:
By Email: **Shop@Michco.com**
By Fax: (517) 702-2041
By Voice: Use numbers above.

Serving the Cleaning Industry Since 1922

Notice: All copyrighted material remains property of original owners, all trademarks are property of respective owners. Manuals are subject to Manufacturer's reproduction limitations. Originals or reproductions were provided by manufacturers through a request. We make no warranty as to the correctness of information provided in this document and you assume all risk.



KENT



MODELS:
KA-280B
AUTOMATIC
SCRUBBERVAC
WITH CYLINDRICAL BRUSHES

OPERATING,
MAINTENANCE
INSTRUCTIONS
& ILLUSTRATED
PARTS LIST

THE KENT COMPANY
P.O. Box 1665
2310 Industrial Parkway
Elkhart, IN 46515
TEL: (219)293-8661, (800)334-1083
FAX: (219)295-8610
TELEX: 25-8331 KENT CO EN

1991

MACHINE SPECIFICATIONS:

CONTROLS	Light effort push button for forward or reverse operation. All switches to reach hand controls.	roll and squeegee lift lever easy
TRACTION MOTOR	36V, 3/4HP, 700 RPM planetary gear type	
VACUUM MOTOR	36V, 1.7 HP 3 STAGE BY-PASS	
BRUSH DRIVE MOTORS (2)	36V 0.5 HP, 1000 RPM	
TRACTION DRIVE	Slipping disc clutch thru chain to differential	
BRUSHES	Dual 5" (12.7cm) DIA.	
BRUSH SPEED	466 RPM	
SCRUBBING WIDTH	38" (96.5 cm)	
BRUSH PRESSURE	115 lbs (52.1 kg) floating 200 lbs (90.7 kg) strip	
TANKS	27 gal (102.2L) capacity each, high density, molded seamless linear polyethylene with 2" (5.1 cm) dump valve for each	
BATTERIES	Six heavy-duty deep cycle type 6V 270AH series connected	
SQUEEGEE	43 3/2" (110.0 cm) wide, swinger type with cast in vacuum tube, easily replaceable gum rubber blades (reversible for extended wear), arcuate shape, new superior tracking center wheel design, new positive height adjustment and new pivot makes squeegee self leveling on turns	
WHEELS	Two 11" (27.9 cm) dia. pneumatic traction tires - front Two 5" (12.7 cm) dia. polyurethane swivels - rear	
SOLUTION FEED	Adjustable flow rate to center of each brush	
FLOAT	7 amp hermetically sealed mercury type with PVC outer shell	
FRAME	All welded steel 1/4" (0.6 cm) flat plates, angle and square stock	
OUTER SHELL	All exterior panels 16 Ga. brushed stainless steel	
BRUSH COVER	High density molded seamless linear polyethylene	
BATTERY CHARGER	Exterior - Electronic, 20 Amp, 36V	
LENGTH (OVERALL)	58 00" (147.3 cm)	
HEIGHT (OVERALL)	39 50" (100.3 cm)	
WIDTH (BODY)	25 50" (64.8 cm)	
WIDTH (BRUSH COVER)	35 00" (88.9 cm)	
WIDTH (SQUEEGEE)	45 25" (114.9 cm)	
WEIGHT (MACHINE W/BATTERIES)	1,075 lbs (487.5 kg)	
WEIGHT (CHARGER)	22 lbs (9.9 kg)	
SHIPPING WEIGHT (TOTAL)	1,300 lbs (589.6 Kg)	

THE KENT CO.		
ELKHART, INDIANA USA		
SERIAL NO		MODEL
VOLTS	PHASE	Hz
MOTOR 1	A M P	H P
MOTOR 2	A M P	H P

The model, type and serial number are indicated on the data plate. For prompt and complete information, always refer to these numbers when inquiring about service

WRITE THE MODEL AND SERIAL NUMBER OF YOUR UNIT IN THE SPACE PROVIDED.

MODEL # _____ SERIAL # _____
RETAIN THIS OWNER'S GUIDE FOR FUTURE REFERENCE

AUTOMATIC SCRUBBER ACCESSORIES KA-280B

FILTER BAG (DRY PICKUP ONLY)	47351
SLUDGE TRAP (WET PICKUP)	49844
BATTERY	
.....WET	26512
.....DRY	26551
CHARGERS	
.....120V 60HZ	31360
.....100V 50HZ	1,361
.....230V 50HZ	31362
.....230V 60HZ	31364
DUMP HOSE KIT	38369
DUMP HOSE INSTALLED	38078
KEYLOCK SWITCH	25295
FOAM FILLED TIRE	19660
NEOPRENE SQUEEGEE BLADE	39203
SQUEEGEE BLADE SET	39204

INTRODUCTION

Your automatic has been especially engineered and manufactured to give the maximum in performance during scrubbing of large floor areas.

With careful maintenance according to the instructions outlined in the following pages, a high standard of operation throughout its use will be insured.

Carefully inspect all components to insure that there is no concealed freight damage. If such damage is discovered, file a "CONCEALED DAMAGE REPORT" immediately with the delivering carrier.

The contents of this manual are based on the latest product information available at the time of publication. The right is reserved to make changes at any time without notice, in materials, equipment, price, color, specifications and models.



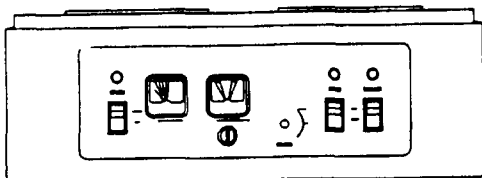
CAUTION:

IMPORTANT SAFEGUARDS: ACCIDENTS DUE TO MISUSE CAN ONLY BE PREVENTED BY THOSE USING THE MACHINE. TO GUARD AGAINST INJURY, BASIC SAFETY PRECAUTIONS AS SHOWN IN THIS MANUAL SHOULD BE OBSERVED.

READ AND FOLLOW ALL SAFETY INSTRUCTIONS.

CONTROL PANEL

1. Brush Up/Down control switch with red indicator light.
2. Brush load indicator. The needle must be out of the red area.
3. Battery meter. The needle must be within the GREEN area for efficient operation.
4. Water flow control knob.
5. Main DRIVE "ON/OFF" switch with red indicator light.



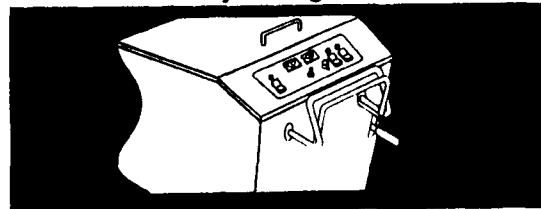
6. "ON/OFF" switch for VACUUM motor. Red light indicates a full recovery tank.

MOTOR PROTECTION

There are three circuit breakers located on the rear panel of the machine directly beneath the traction control handles. These circuit breakers protect the motors in your machine by shutting them off in the event that they become overheated during operation. There is one circuit breaker to protect the brush drive motors, one to protect the traction drive motor, and one to protect the vacuum motor. If any of these motors will not turn on during operation, check to see if one of the circuit breaker buttons has popped out. If so, once the motor has been allowed to cool for a moment, push the button in and resume operation.

TRACTION DRIVE OPERATION

To move the machine in forward or reverse first push the drive switch "ON." The forward motion of the machine is controlled by squeezing the control bar lightly for creeping motion, firmly for full speed. Reverse motion is controlled by pulling the control rod backwards, again lightly for creeping action, firmly for full reverse speed. The machine is equipped with a differential drive for easy turning in either direction.



SQUEEGEE OPERATION

On the rear panel, the right handle raises and lowers the squeegee. To raise the squeegee, pull the handle up and set it on the top of the ramp.

Push the squeegee handle down to lower the squeegee. This automatic is equipped with a squeegee which is capable of swinging nine (9") inches to either side of the machine. This permits picking up of water on a turn because the squeegee will follow the pattern of the brushes. When up against a wall, the squeegee will ride tight to it until the machine pulls away. Should the squeegee encounter an obstruction,

it will shift laterally until the obstruction has been passed.

BRUSH CONTROL

To start and lower brushes:

1. Push drive switch "ON."
2. Press the brush control switch "down" until the brush load indicator needle is in the white "float" zone. Brush drive motors and indicator light come on automatically.
3. For strip pressure, press and hold the brush control switch "down" until the brush load indicator is in the green "strip" zone.
4. To raise the brushes, press and hold the brush control switch "up" until the brush motors stop and the indicator light goes off.

INSTALLING THE BRUSHES



CAUTION:

PLACE MAIN SWITCH IN OFF POSITION BEFORE APPROACHING BRUSH COVER.

This cylindrical brush automatic comes with two horizontal brushes which mount to the brush housing as follows:

Each brush assembly is secured to the housing by four (4) screws.

To install new brushes:

- 1.) Remove brush cover from machine.
- 2.) Raise the brush mechanism to full up position.
- 3.) Loosen the brush motor so that the drive belts can slip off the lower pulley.

4.) Loosen the bearing opposite the pulley side by untightening the set screw. This should allow the brush assembly to drop out of its position. If not lightly tap the end of the axle shaft with a soft hammer.

5.) Remove the brush from underneath the housing.

6.) Remove the eight (8) hex socket screws from each brush along with the four (4) set screw holding the block to the axle. Remove the used brush from the shaft and replace with the new brush.

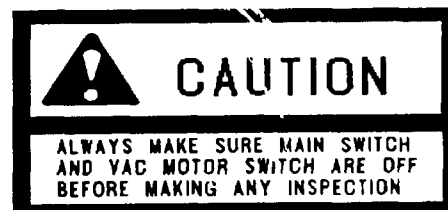
7.) Reverse steps 1-6 for installation of brush.

SOLUTION TANKS

Raise the lid at the front of the machine. The fresh solution and the recovery tanks are mounted side by side. The right-hand tank is the fresh solution tank and is marked "FILL HERE." The left is the recovery tank, it has the vacuum motor mounted to it.

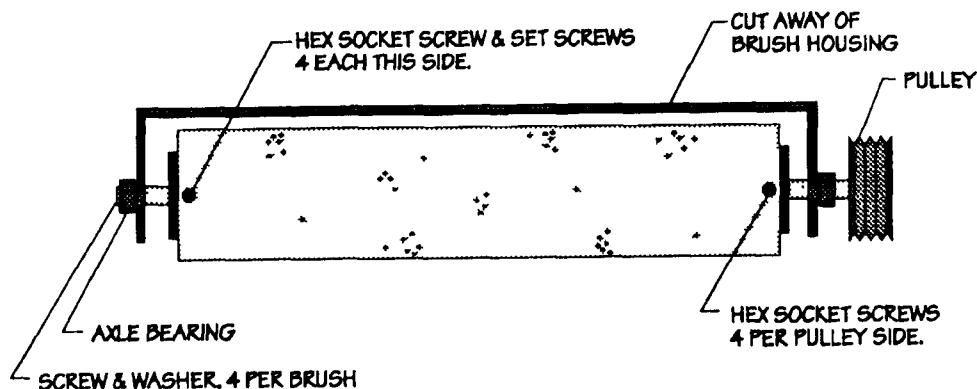
DO NOT USE HOT WATER (OVER 125 DEGREES F) IN EITHER TANK.

VACUUM MOTOR AND LINT FILTER



The vacuum motor and lint filter are located in the vac well of the recovery tank. To inspect:

BRUSH DIAGRAM



1. Turn off all switches.
2. Disconnect the vacuum motor plug.
3. Remove the two (2) vacuum motor tie down screws.
4. Lift the vacuum motor and filter off the two (2) studs.
5. Remove the motor filter and clean the foam material and any lint on motor fan or louvers.

SCRUBBING OPERATIONS

To apply solution to the floor, scrub and immediately recover the liquid and soil. The following sequence of operations is followed:

1. Press the main drive switch to the "ON" position.
 2. Turn the vacuum switch "ON."
 3. Lower the squeegee.
 4. Turn water knob to desired flow rate.
 5. Lower the brushes to the desired position; brush drive motors automatically turn "ON."
 6. Squeeze the control rod for forward motion.
- Various speeds of forward or reverse motion can be obtained by changes in force on the central rod. An infinite number of speeds are available. **DO NOT REVERSE MACHINE WITH SQUEEGEE DOWN.**

TURNS IN THE NORMAL SCRUBBING PATTERN

In order to reduce an over abundance of solution during operation on sharp turns:

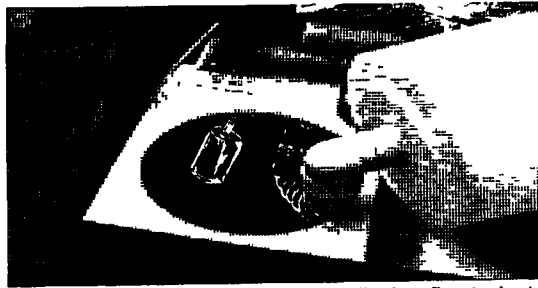
- (A) Turn water knob to "OFF" six (6) feet before the turn.
- (B) Return the water knob to "ON" in the middle of the turn.

Our automatics can be easily controlled and maneuvered with one hand leaving the other hand free to manipulate the water flow.

WET FLOAT SHUT-OFF AND INDICATOR LIGHT

The wet float shut-off is located in the recovery tank. To inspect and clean, remove the vacuum motor pot from the recovery tank.

NEVER RESTRICT THE WET FLOAT SHUT-OFF OR VACUUM MOTOR; FLOODING AND DAMAGE MAY OCCUR.



When the recovery tank is full, the float shut-off will turn on the red vacuum light. When the red vacuum light comes on:

1. Turn the vacuum "OFF."
2. Take the machine to a dumping area and empty the recovery tank.
3. Flush out the tank with clean water and check to see that the wet float is not restricted.

TO DUMP SOLUTION

Go to the right side of the machine, reach DOWN TO THE RIGHT DUMP VALVE (red handle) and pull up.

NOTE: Stand well away from the valve for the soil will dump very fast.

The left dump valve is for releasing the clean solution. (Directions are from operators position.)

DUMP HOSE KIT

For conditions where a drain is not accessible, a dump hose kit (Part 038369) is available.

MACHINE CARE

Please read and follow the daily, weekly, and monthly maintenance schedule located on THE UNDERSIDE OF THE LID OVER THE BATTERY COMPARTMENT.

At the end of the day's operation, the machine should be completely cleaned and prepared for the next shift's operations. Careful maintenance will insure effective performance throughout a long period of service.

1. Open the access to the recovery tank and completely rinse with clean water. If this is done at the end of each day, there will be no soil build-up to the surface of the polyethylene tank.
2. Clean the fresh water tank using the same procedure as in No. 1 above.
3. Do not store the machine with the brushes in down position because of the possible set in

the brushes and possible discoloration of the floor due to moisture in the brushes.

4. Tilt the battery compartment lid full forward and inspect the battery compartment to insure that no large amount of water or solution has gathered in the battery compartment tray.

5. Clean inside of brush housing and brush with water under pressure.

MAINTENANCE INSTRUCTIONS

A sound Preventative Maintenance Program will insure long, reliable and effective performance from your machine. We would strongly suggest that responsibility for the machine be assigned to a reliable individual in your organization.

DAILY

1. Clean and flush fresh and recovery solution tanks.
2. Clean lint filter on vac fan.
3. Wipe squeegee blades and machine wheels clean.
4. Wipe clean all interior and exterior surfaces.
5. Check battery water level and clean tops with damp cloth - connect battery charger.
6. Charge batteries.
7. Check pick-up tube for any obstruction.
8. Lubricate axle bearings.

WEEKLY

1. Lubricate chain and check for tension.
2. Lubricate all linkage and hinge parts. See lubrication chart.
3. Lubricate caster bearings and axle. See lubrication chart.
4. Replace Microstat Filter (where applicable).

MONTHLY

1. Check belt and chain for tension and wear. (See adjustments.)
2. Check sprockets for wear.
3. Check alignment of chain and belt.
4. Check all gaskets, vacuum motor, vacuum pot, tank inlet tube, and water valve.
5. Check proper clutch adjustments.
6. Check traction bar control spacing.
7. Check all wiring connections for cleanliness.
8. Lubricate caster bearings and axle. (See lubrication chart.)

9. Replace Microstat Filter (where applicable).
10. Check tire pressure (60 PSI).

SIX MONTHS

1. Inspect vacuum motor carbon brushes, replace if worn to 3/8" length or less.
2. Inspect traction motor carbon brushes, replace if worn to 3/8".
3. Inspect brush drive motor carbon brushes, replace if worn to 3/8".

ADJUSTMENTS

CLUTCH

The transmission in this automatic scrubber uses a clutch to engage and disengage the power to the drive wheels. When the clutch is properly adjusted the machine will start smoothly in both forward and reverse. If the machine starts with a sudden jerk when the control bar is slowly squeezed, the clutch adjustment is too tight. At the other extreme if slipping occurs when the control bar is squeezed tight, the clutch adjustment is too loose. This can promote premature clutch wear.

To adjust the clutch simply turn the wing nut on the adjustment screw on the lower right-hand side of the rear of the machine (item 57 on lower Chassis Figure). Turn clockwise to tighten the clutch adjustment, counterclockwise to loosen the adjustment.

MAIN BELT

The drive belt on this automatic scrubber may be adjusted by turning the adjustment screw at the lower left-hand side of the rear of the machine (Item 2 on Lower Chassis Figure). The belt should never slip, but avoid excessive tightening which can damage bearings. To tighten the belt, first loosen the four (4) motor mounting bolts, next turn the adjustment screw clockwise. To loosen, turn counterclockwise. Retighten motor mounting bolts.

CONTROL BAR SWITCH

The traction drive motor in this automatic scrubber is controlled by two switches which are activated when the control bar is squeezed tight or pulled back. These switches are triggered by cams which are mounted to the activator pivot linkage. The adjustment of these cams on the pivot linkage and the mounting position of the switches must be correct in order for the traction drive motor to function properly.

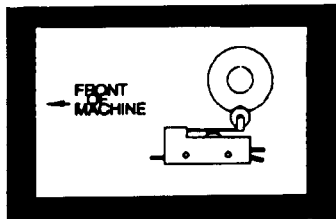
To adjust the switches and cams:

1. Turn all switches off.
2. Open battery compartment.
3. Disconnect forward battery cable and place lead so that it will not come in contact with any battery post.
4. Cover battery tops with cardboard or other non-conducting material.
5. Remove instrument panel and carefully lay out on the cardboard sheet. **DO NOT TOUCH ANY OF THE BATTERY TERMINALS.**

The switches and cams are located about 2 inches left and 6 inches beneath the control panel voltmeter. The switches are mounted together under the pivot linkage. The switch nearest the center of the machine is the traction motor ON/OFF switch. Adjust this switch first. To adjust:

1. Loosen the set screw on the cam nearest the center of the machine. The cam has a V-groove on one side. With the control bar released in neutral position, this cam should be directly above the switch and the V-groove should be down so that the switch roller rests in the center of the groove (see Figure). With the cam in this position, tighten the cam set screw.

Cam-Switch Configuration with Control Bar in Neutral Position

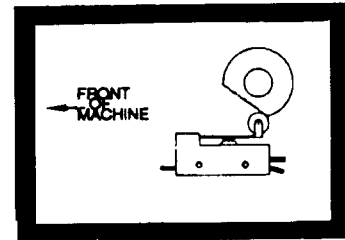


2. The mounting position of the switches must be at a height which allows the operator to move the control bar about 1/2-3/4 inch in both forward and reverse before the ON/OFF switch (the switch nearest center of machine) is activated. If this height is not correct, loosen the switch mounting screws and move the switches up or down until the ON/OFF switch is set correctly. After this is set, check to make sure the roller rests in the center of the cam V-groove when the control bar is in the neutral position.

3. The left cam activates the forward-reverse traction motor switch. This cam should be set so that even the slightest backward movement of the control bar will activate the forward/reverse switch. When the control bar is pulled back from the neutral position this switch **MUST** activate before the ON/OFF switch (referred to above) activates. If it doesn't, loosen the left cam set screws and index it on the shaft to the correct setting (see Figure). Then retighten the

cam set screw. In some cases it may be necessary to bend the switch lever.

Approximate Cam switch Configuration with Control Bar in Neutral Position



DRIVE CHAIN ADJUSTMENTS

1. Locate access hole on lower chassis assembly on left side of machine.
2. Loosen bolt in access hole with 1/2" socket.
3. Slide idler sprocket down until chains snug.
4. Retighten idler sprocket bolt.

SQUEEGEE PRESSURE ADJUSTMENT

Squeegee pressure adjustment is required if squeegee wheels will not stay on the floor when squeegee is down. At the rear of the machine, mounted directly above the traction drive motor is a nut that adjusts the squeegee pressure.

To increase squeegee pressure:

1. Use a 1/2" deep socket wrench.
2. Turn the nut clockwise to increase squeegee pressure.

NOTE: Increasing squeegee pressure will increase effort required to lift squeegee.

SQUEEGEE LIFT ADJUSTMENT

This adjustment is necessary when the squeegee will not clear the floor when the squeegee is in the "UP" position.

To adjust the squeegee higher, adjust the jam nuts on each side of the bracket at the bottom end of the squeegee cable:

1. Put the squeegee handle in the "UP" position.
2. Loosen the bottom jam nut.
3. Turn the top jam nut clockwise until the squeegee is clear of the floor.
4. Tighten the bottom jam nut to lock the squeegee position.

SQUEEGEE TILT ADJUSTMENT

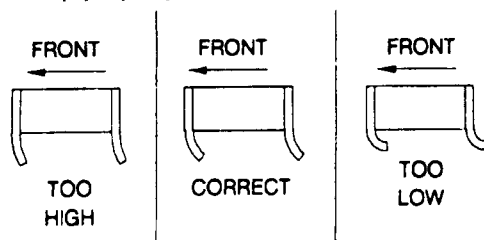
The squeegee on this machine pivots freely, allowing the pressure on each end of the squeegee to keep it level with the floor at all times. The right to left tilt adjustment is automatic. Front to rear tilt adjustment is correct if, as the machine is moved forward, there is an equal amount of squeegee flare at the ends of the squeegee rubber as there is at the center. The

front to rear tilt is controlled by adjusting the four (4) set screws on the squeegee mounting plate. If the squeegee flare is greater at the ends than at the center, loosen the two (2) black knobs, tighten the back two (2) set screws on the squeegee mounting plate equally and retighten the black knobs. If the squeegee flare is less at the ends than at the center, loosen the black knobs, tighten the front two (2) set screws on the squeegee mounting plate, and retighten the black knobs.

SQUEEGEE HEIGHT ADJUSTMENT

In order for the squeegee to pick up effectively, the height must be adjusted to give the correct amount of squeegee rubber contact with the floor. As the machine is moved forward the back squeegee rubber should flare back so that the corner of the leading edge is straight down as shown in the figure labeled "CORRECT" below.

If the squeegee is too high or too low it will not pick up properly.



To adjust the squeegee height:

1. Lower the squeegee to the floor.
2. Loosen the jam nut on the squeegee height adjustment screw (located on top of the squeegee bar, directly above the squeegee wheels).
3. To raise squeegee turn screw clockwise, to lower turn counterclockwise.
4. Retighten jam nut.

BRUSH STRIP PRESSURE ADJUSTMENT

This Automatic Scrubber uses an electric actuator to raise and lower the brush head. When the brush control switch on the instrument panel is pushed and held "down", the brushes automatically come on and lower until strip pressure is reached. In strip position the brush load indicator needle should be in the green area of the indicator dial. On smooth floors the needle may stay slightly below the green area. On rough or sticky floors, the indicator needle may go into the red area of the dial. Prolonged operation with the needle in the red area can cause premature brush drive motor failure! If the machine's indicator needle goes

into the red area when operated in strip position, you must decrease the strip pressure. To do this:

1. Check that all power switches are "OFF"!
2. Remove the two black knobs at the front of the machine and remove the brush cover assembly.
3. Remove the two screws in the lower front door and open the door, exposing the brush head.
4. The strip pressure is controlled by the adjustment screw at the front of the brush head directly below the down limit switch (item 30 on brush head figure.) To decrease strip pressure, loosen the jam nut and turn the screw counterclockwise. Retighten the jam nut after adjusting.



CAUTION:

USE OF THE BATTERY CHARGER

To operate the battery charger:

1. Open the battery compartment lid. Do not close this lid during charging operation. Hydrogen gas is formed when the batteries approach the full charge state. This gas is explosive; therefore, when charging batteries with lid open, avoid any open flame or electric spark near batteries. This includes connecting or disconnecting charger with timer "ON." To avoid accumulation of gas, be sure batteries receive good air circulation while being charged.
2. Connect the charger plug into the machine firmly. The charger plug is mounted in the battery compartment and beneath the control panel.
3. Plug the battery charger into a normal electrical outlet and turn the timer to "ON."

NOTE: Set the battery charger on a flat, hard surface to insure that cooling air can circulate through the bottom louvers.

The battery charger is guaranteed against defective parts and workmanship. Any parts proving defective within six months will be repaired free of charge when the charger is returned prepaid to the manufacturer.

BATTERY CARE

Battery care determines the life span and efficiency of the units; therefore, for the longest

possible useful life from these batteries, the following procedure should be followed:

1. Keep battery solution (electrolyte) level up in cells. Check daily - if cells need water, use only distilled or approved water.

2. Keep batteries fully charged.

3. Keep batteries and connection clean. When necessary clean with baking soda solution, attach wires and coat terminals with grease to retard corrosion.

BRUSH CARE

Do not allow brushes to be in contact with floor surface for an extended period of time while not in use.

Check periodically for brush wear. Replace brushes if worn excessively.

SERVICE & BATTERY GUARANTEE APPLYING TO SCRUBBER-VAC BATTERIES

SERVICE GUARANTEE: If a battery becomes unserviceable in normal use within 90 days of purchase, the purchaser is entitled to a new battery of a comparable size and type, without charge, or to the necessary repairs, without charge for either labor or materials, at the option of the manufacturer. Transportation,

recharges, or the use of rental batteries are not classed as repairs and the battery owner is expected to pay for such services, if required.

ADJUSTMENT POLICY: If a battery becomes unserviceable in normal use after the expiration of the service guarantee, it will be repaired or replaced with another battery of a comparable size and type to the original purchaser, on a pro-rated price basis, in exchange for the unserviceable battery, the purchaser paying only for the service received, plus transportation charges.

LIMITATIONS: Failure in service due to fire wreckage, explosion, freezing, abuse or neglect, use of battery "dopes," or the use of a battery of a group size smaller than of the battery used as original equipment is not covered by the Service & Battery Guarantee. The Service & Battery Guarantee will not apply if battery has been opened or repaired or manufacturer's identification markings has been obliterated before presentation for adjustment or if battery has broken case or cover or if battery is discharged.

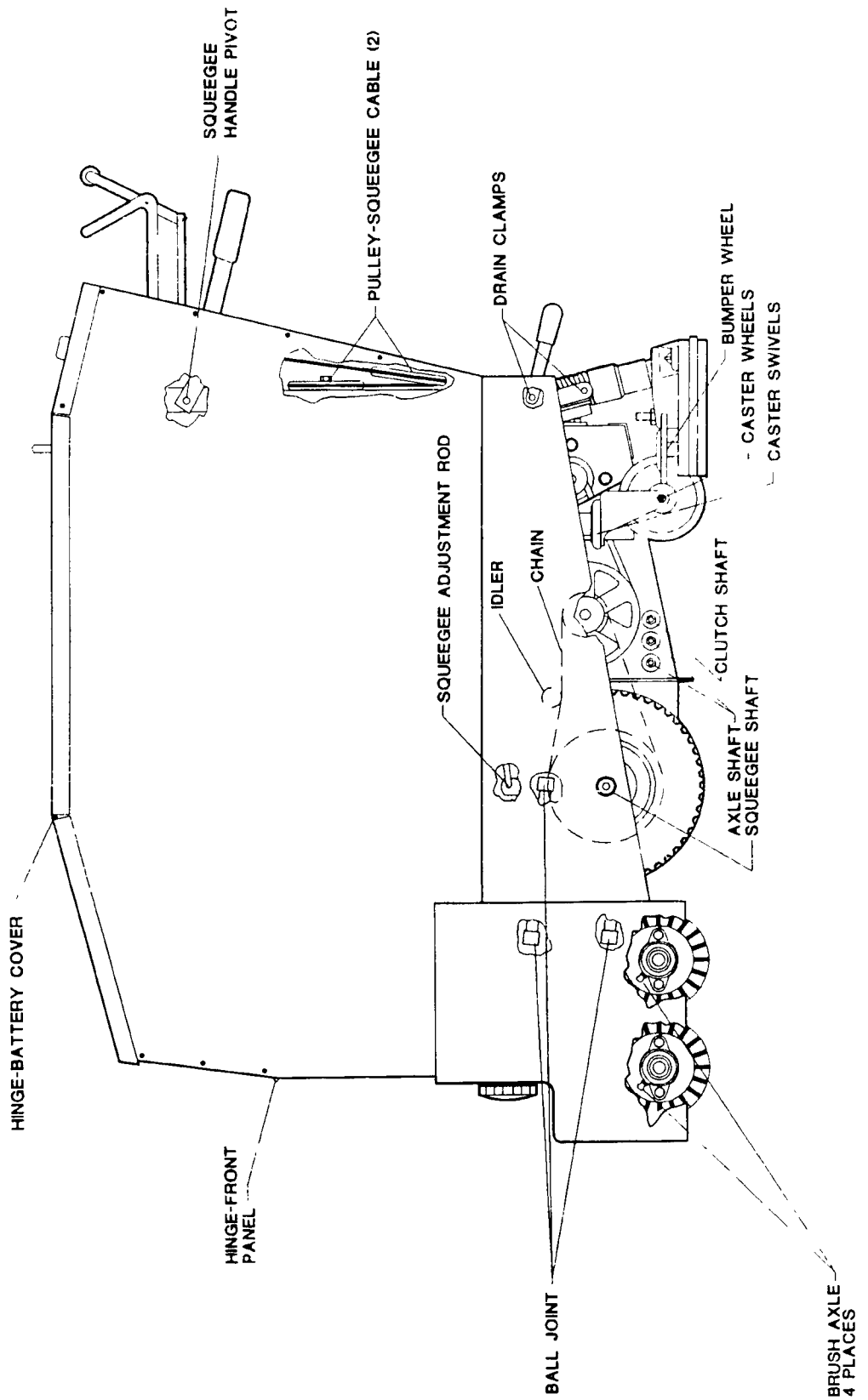
SCALE FOR PRO-RATING AFTER 90 DAYS

Months Operation Price Exchange
Months Guarantee x 1 = Price

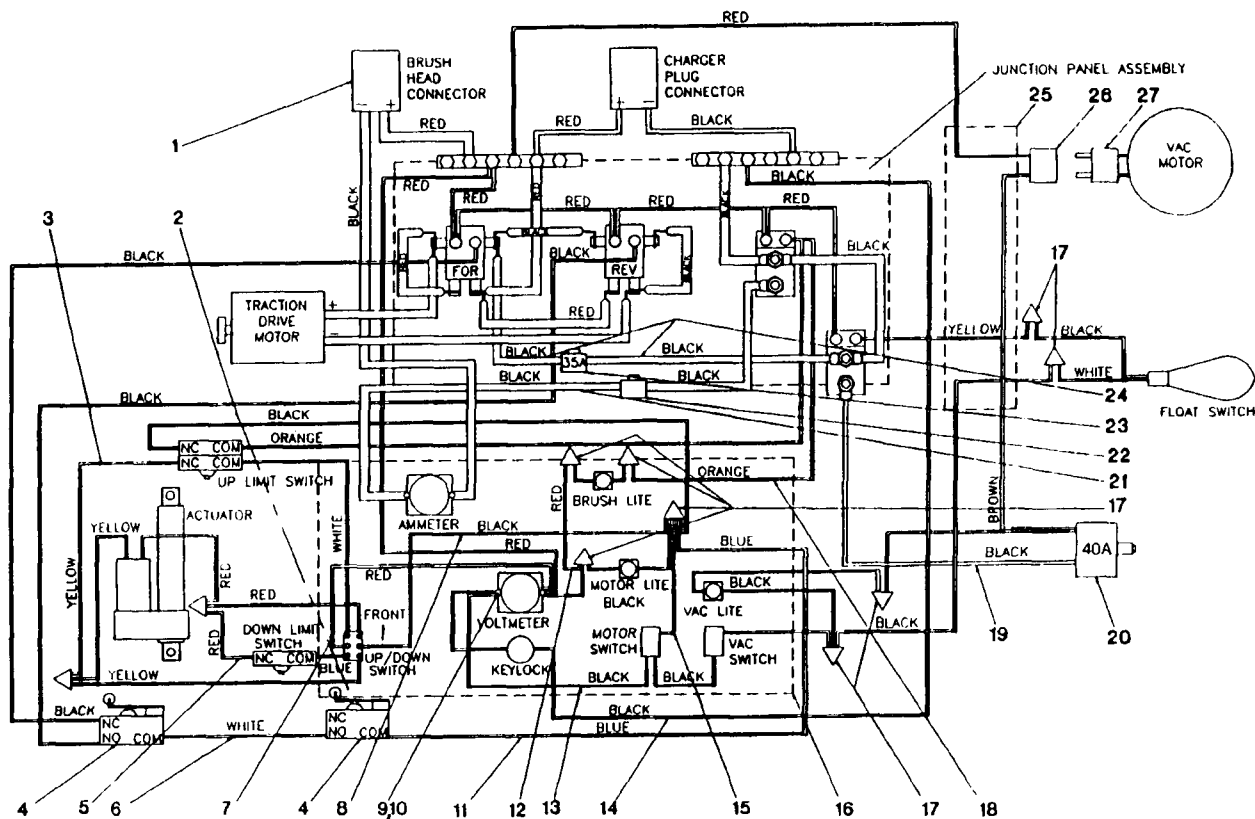
All batteries are guaranteed for twelve (12) months from date of receipt.

(Subject to change without notice)

LUBRICATION CHART



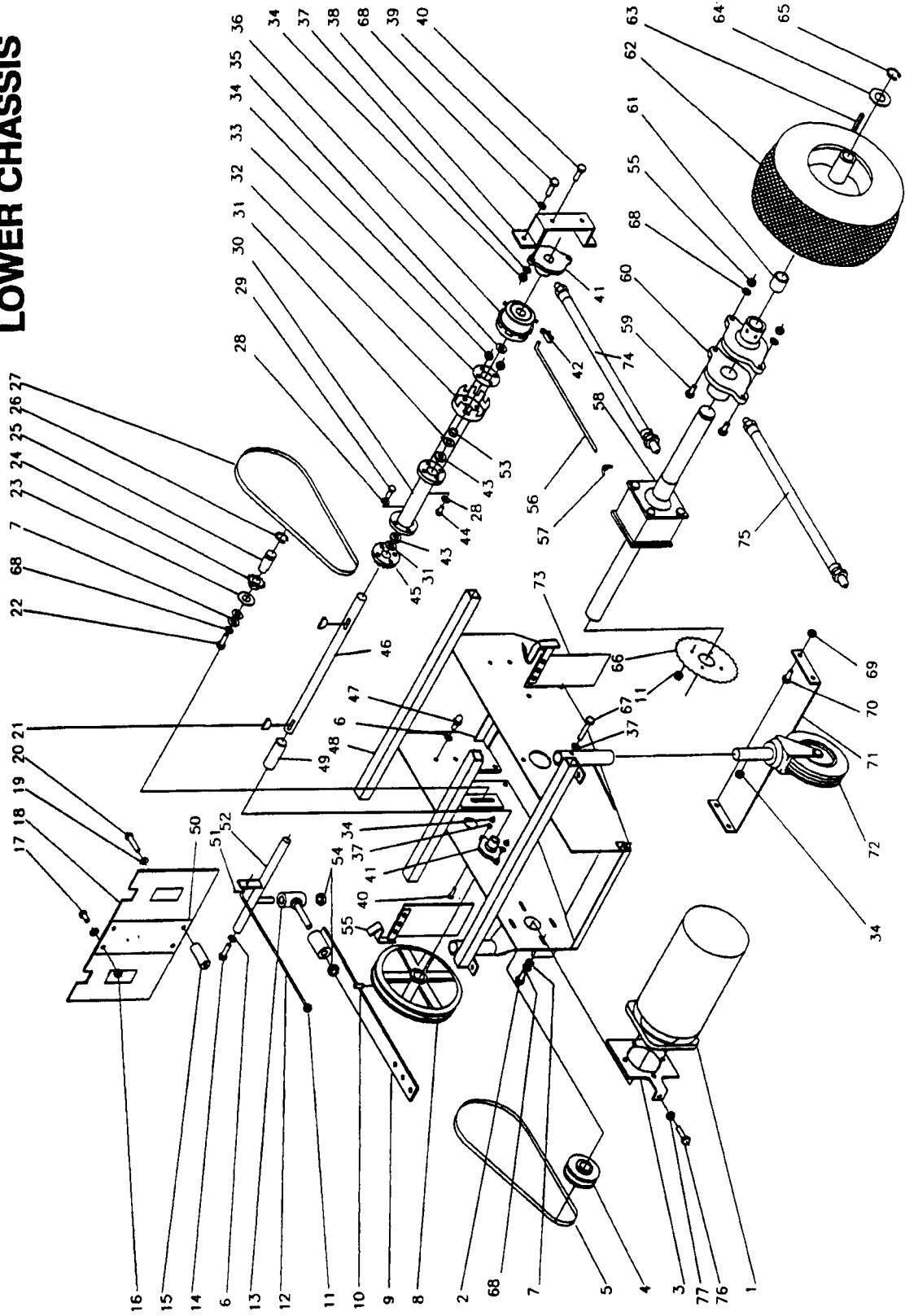
WIRING DIAGRAM



DET	PART NO.	DESCRIPTION	QUANT
1	025340	ASM,WIRE-- 6GA,BLK,78 0L,RINGS	1
2	025823	ASM,WIRE--6 CNDCT,16GA,COMB	1
3	025825	ASM,WIRE--16GA,YEL,18 0L,RING	1
4	026886	SWITCH,PUSH--SPDT,20A,125-250V	2
5	025824	ASM,WIRE--16GA,RED, 6 0L,RING	1
6	025734	ASM,WIRE--16GA,WHT,6 00,QD'S	1
7	025648	ASM,WIRE--16GA,RED, 9 0L,COMB	1
8	025554	ASM,WIRE--16GA,BLK,10 5L,COMB	1
9	003279	NUT,HEX-- 10-24,ZN PLT	16
10	005297	WSHR LK 200ID.334OD.047TSPLT	8
11	025835	ASM,WIRE--16GA,BLU,20 0L,QD	1
12	025410	WIRE--RS 98036,12 00L, .62& 62	1
13	025244	ASM,WIRE--2 CNDCT,16GA,BLK	1
14	025272	ASM,WIRE--16GA,BLK,15 0L,RINGS	2
15	025570	ASM,WIRE--16GA,BLK, 7.0L,QD	1

DET	PART NO.	DESCRIPTION	QUANT
16	034447	ASM,PANEL--INSTRUMENT,32,ELIFT	1
17	026400	NUT,WIRE--IDEAL 74B	6
18	025826	ASM,WIRE--16GA,ORN,12 0L,RING	1
19	025765	ASM,WIRE--14GA,BLK,12.00L,COMB	1
20	026888	CIRCUIT BREAKER-- 40AMP	1
21	025024	ASM,WIRE-- 6GA,BLK,14 0L,RINGS	1
22	026924	CIRCUIT BREAKER--45 AMP	1
23	026717	CIRCUIT-BREAKER--35A-THERMAL	1
24	025303	ASM,WIRE-- 6GA,BLK,10 0L,RINGS	1
25	027024	ASM, WIRE --4 CNDCT,	1
26	026661	CONN,RCPT -2-WR,LINE CONN,FEM	1
27	026555	CONN,PLUG--2-WR,LINE CONN,MALE	1

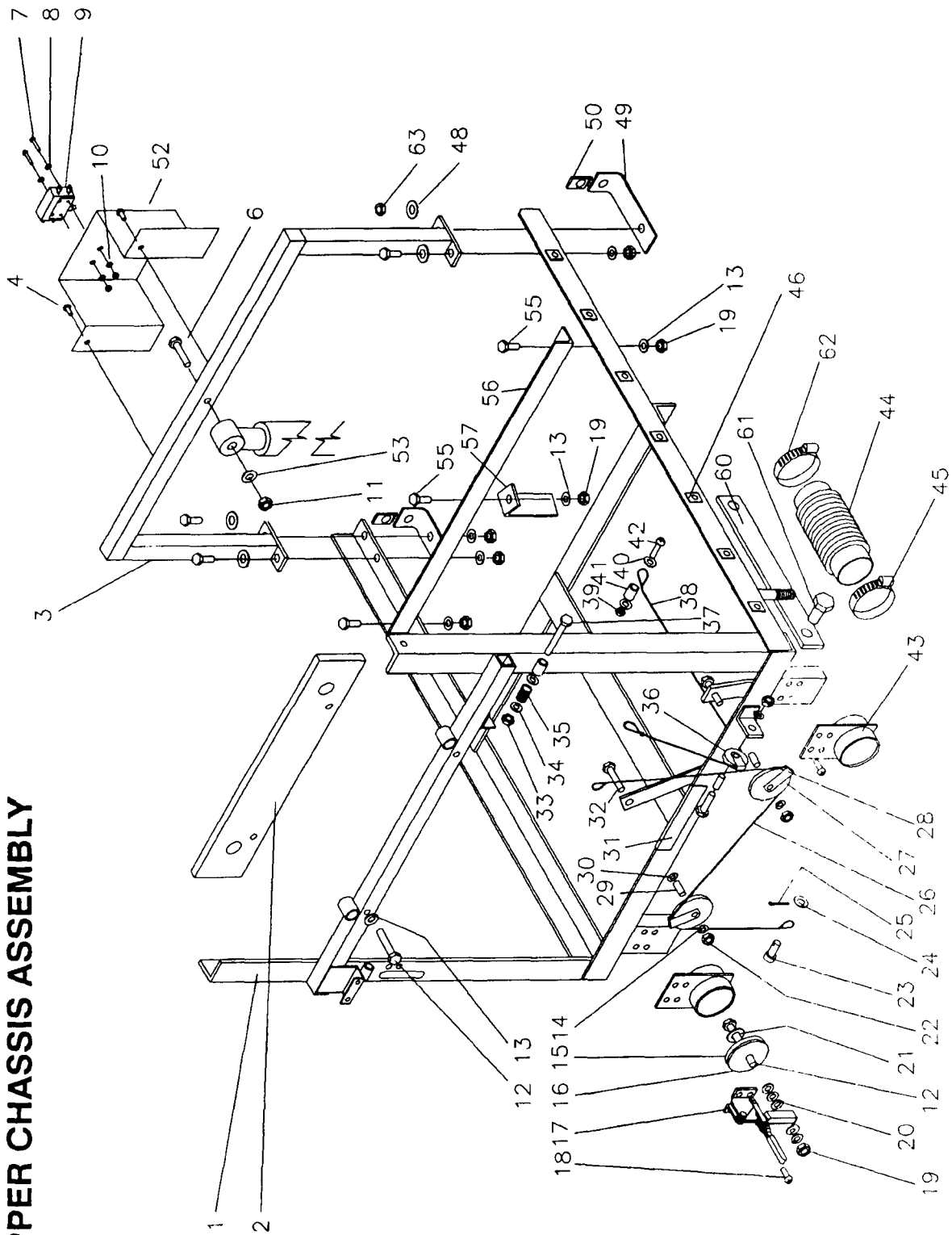
LOWER CHASSIS



DET	PART NO.	DESCRIPTION	QUANT
1	023308	MTR,DC--36V,.750HP,700RPM,48F	1
1	026642	BRUSH,MTR--FOR 23307 & 23308	4
1	026643	ASM,RING--BRUSH	1
1	027212	BRG,BALL--.787ID,1.850OD,.551W	2
2	003246	SCR CAP HEX HD .312-18X1.00L	4
3	053284	BRACKET,STL--6.0X5.0,TENSIONER	1
4	051570	SHEAVE--ZINC PLATED'OUT-SERV'	1
5	053385	BELT,V--4L,30.3 PITCH LENGTH	1
6	004214	WSHR LK .390ID.683OD.094TSPLT	6
7	004218	WSHR FLT .344ID.750OD.060T STL	6
8	053286	PULLEY,GRVD--7.00OD,.625 BR	1
9	034170	ASM,SQUEEGEE BAR--W/WHEELS	1
9	034174	WDMT,SQUEEGEE BAR--PIVOT TUBE	1
10	005387	SCR SET CUP PT .312-18X.500L	1
11	003378	NUT,HEX LOCK--.312-18,ZN PLT	1
12	051283	ROD,SQUEEGEE--.312 DIA X 13.3L	1
13	034173	WDMT,PIVOT--SQUEEGEE	1
14	003228	SCR CAP HEX HD .375-16X.875L	2
15	050872	SPACER,PHEN--.250X.500, .375L	2
16	005480	NUT,HEX LOCK-- 10-24,NYLOC	2
17	001289	SCR MACH RD HD 10-24X.500L	2
18	052200	RUBBER,SPLSH GUARD--8.18X14.75	1
19	224015	WSHR FLT .187ID1.00OD.063T STL	4
20	005482	SCR TPG F PAN HD 10-24X.875L	2
21	049017	KEY,WOODRUFF--#606,.750D,.187W	2
22	033386	ASM, GREASE FITTING 'AUTOS'	1
23	004221	WSHR FLT .344ID1.00OD.036T STL	1
24	049003	SPROCKET,CHAIN--#40,.500P,11T	1
25	052483	IDLER SHAFT--MOTOR,1.339 LONG	1
26	048216	RING,RTNG--EXT,.625 SHAFT,5100	1
27	054698	CHAIN,ROLLER--#40,61LK,W/HL&ML	1
28	004254	WSHR LK .267ID.510OD.028T EXT	8
29	002256	SCR CAP HEX HD .250-20X1.00L	4
30	034003	WDMT,CLUTCH DRIVE--AUTOMATICS	1
31	004422	WSHR SPR TNSN .689ID1.25OD.010	2
32	053447	CUP,DRIVE--CLUTCH,AUTO	1
33	049010	WSHR FLT RS#04421 W/4 HOLES	1
34	003283	NUT,HEX--.250-20,ZN PLT	6
35	004496	WSHR SPR TNSN .625ID1.00OD.014	1
36	038388	CLUTCH REBUILD KIT	1
36	049016	ASM,CLUTCH--	1
37	002278	WSHR LK .262ID.489OD.062TSPLT	6
38	053282	BRACKET,STL--7.5X2.0,JACKSHAFT	1
39	003244	SCR CAP HEX HD .312-18X.750L	2
40	002256	SCR CAP HEX HD .250-20X1.00L	4

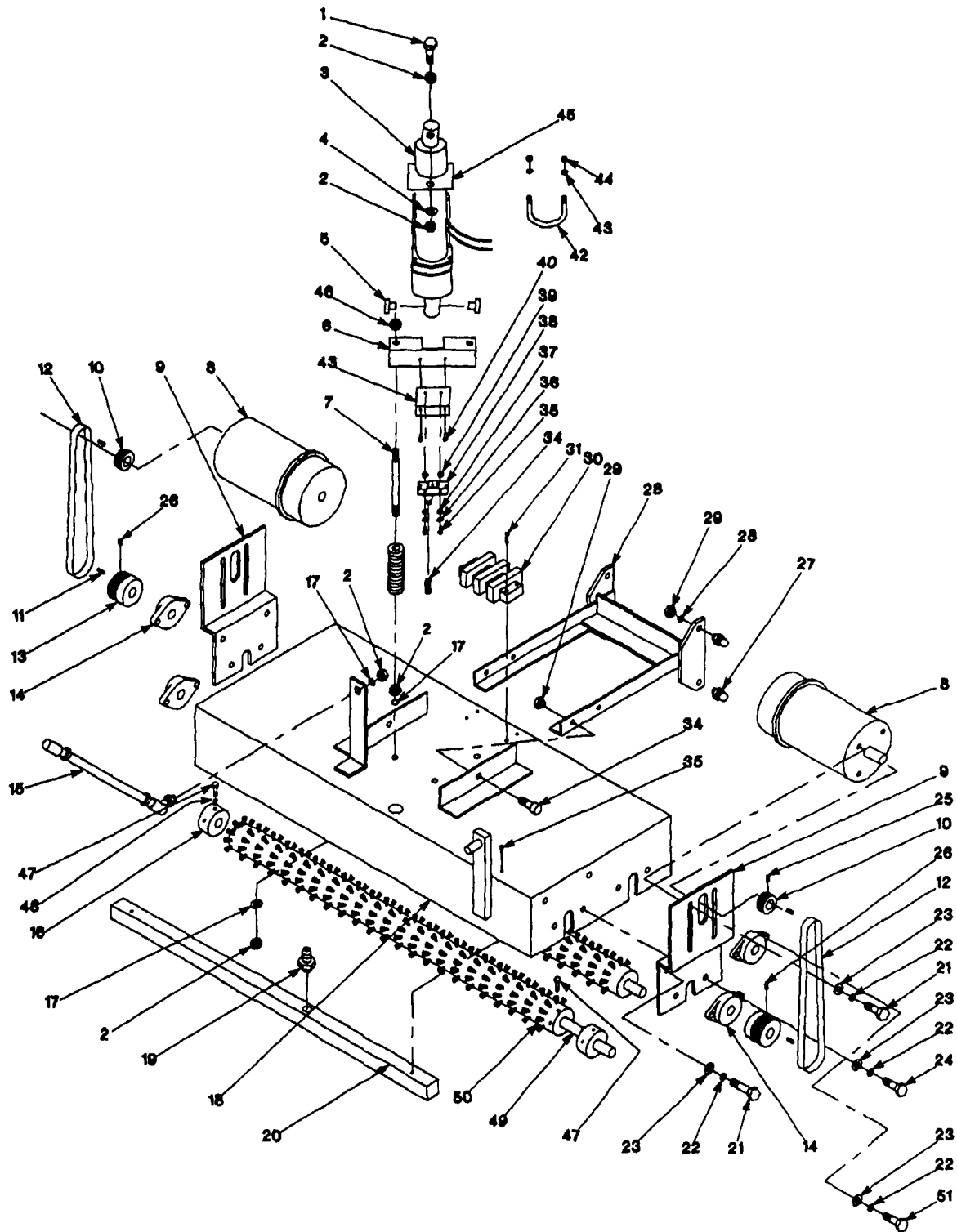
DET	PART NO.	DESCRIPTION	QUANT
41	027179	BRG,W/PB--.625ID,CAST IRON	2
42	049011	CLIP-R H	1
43	027208	BRG,BALL--.625ID,1.375OD,.344W	2
44	002254	SCR CAP HEX HD .250-20X.875L	4
45	049001	SPROCKET,CHAIN--#40,.500P,11T	1
46	053285	SHAFT--CLUTCH DRIVE, .625ODX15	1
47	048953	BALL JOINT	4
48	034006	WDMT,CHASSIS--LOWER,26&32 AUTO	1
49	053274	TUBE,STL--.750 OD,17 GA,3.406	1
50	052408	PLATE,MTG--SPLASH GUARD 4.0X7	1
51	004297	PIN,COTTER--.094X .750 LONG	1
52	033422	WDMT,SQUEEGEE-ADJUSTMENT	1
53	053659	SPACER,STL--.750X.640, .156,2	1
54	003370	NUT,HEX LOCK--.500-13,ZN PLT	2
55	033337	ASM,GUARD--SPLASH, LEFT	1
56	053287	ROD,STL--.187X11.32L,THDD	1
57	003358	NUT,WING-- 10-24,ZN PLT	1
58	051375	DIFFERENTIAL,DRIVE--26&32 AUTO	1
59	003251	SCR CAP HEX HD .312-18X1.75L	4
60	027221	BRG,BALL,ANLR,SLD--SELF ALGN.	4
61	051417	SPACER,STL--1.01X1.25, .563L	2
62	051395	WHEEL,DRIVE--4.10/3.50X5,GRAY	2
63	044656	KEY,SQUARE--.250 SQ,2.500 LONG	2
64	004330	WSHR FLT 1.05ID1.50OD.036T STL	4
65	048537	RING,RTNG--EXT,.984 SHAFT,5160	2
66	054697	SPROCKET,CHAIN--#40,.500P,36T	1
67	002273	SCR CAP HEX HD .250-20X1.75L	2
68	004212	WSHR LK .326ID.586OD.078TSPLT	11
69	005279	NUT,HEX LOCK--.375-16,NYLOC	4
70	003224	SCR CAP HEX HD .375-16X.750L	4
71	051394	SUPPORT,PLATE--LOWER 26&32AUTO	2
72	049940	WHEEL & BEARING ONLY	2
73	033356	ASM,GUARD--SPLASH, RIGHT	1
74	039018	ASM,HOSE--GREASE, 8.50L HOSE	2
75	039019	ASM,HOSE--GREASE, 10.25L HOSE	4
76	002453	SCR CAP HEX HD .312-18X1.25L	1
77	003356	NUT,HEX JAM--.312-18,ZN PLT	1

UPPER CHASSIS ASSEMBLY



DET	PART NO.	DESCRIPTION	QUANT
1	034030	WDMT,CHASSIS--UPPER,32 AUTO	1
2	032580	ASM,BATTERY--SUPPORT	1
3	032742	WDMT,SUPPORT--ACTUATOR,AUTO'S	1
4	005316	SCR TPG F PAN HD 10-24X.375L	3
6	003268	SCR CAP HEX HD .375-16X3.00L	1
7	001248	SCR MACH RD HD 6-32X1.00L	2
8	004200	WSHR FLT .156ID.375OD.065T BRS	2
9	026979	SWITCH,PUSH--DPDT,20A	1
10	003274	NUT,HEX-- 6-32,ZN PLT	2
11	005279	NUT,HEX LOCK--.375-16,NYLOC	1
12	005462	SCR CAP HEX HD .312-18X1.75L	4
13	004212	WSHR LK .326ID.586OD.078TSPLT	11
14	002278	WSHR LK .262ID.489OD.062TSPLT	3
15	048140	WSHR NEOPRENE .250X2.25X.187T	2
16	048097	WSHR FLT .328ID2.27OD.120T STL	2
17	048047	DRAIN CLAMP	2
18	002343	SCR TPG F PAN HD .250-20X.500L	8
19	003349	NUT,HEX--.312-18,ZN PLT	9
20	005284	WSHR FLT .344ID.687OD.080T STL	7
21	004374	WSHR FLT .406ID1.75OD.060T STL	2
22	003283	NUT,HEX--.250-20,ZN PLT	3
23	004383	PIN,CLEVIS--.375X .625 LONG	1
24	005320	WSHR FLT .406ID.750OD.060T STL	1
25	004298	PIN,COTTER--.125X .750 LONG	1
26	048771	CABLE,STL--.125DIA,37.50L	1
27	048174	PULLEY,CABLE--2.50OD,.378 BORE	2
28	048176	GUARD-PULLEY	3
29	048177	SPACER,STL--.253X.374 .530L,Z	3
30	005433	WSHR FLT .281ID.750OD.120T STL	1
31	048178	WEAR STRIP-CABLE 98256	1

DET	PART NO.	DESCRIPTION	QUANT
32	002269	SCR CAP HEX HD .250-20X1.25L	3
33	003368	NUT,HEX LOCK--.375-16,ZN PLT	1
34	005483	WSHR FLT .438ID1.00OD.104T STL	4
35	048206	SPRING,COMP .600D 1.00L .072WD	2
36	053300	PULLEY,CABLE--1.62 OD,.375 ID	1
37	003268	SCR CAP HEX HD .375-16X3.00L	1
38	053305	WIRE ROPE--.125 DIA. X 32 75'	1
39	005480	NUT,HEX LOCK-- 10-24,NYLOC	1
40	E49039A	WSHR FLT .203ID.750OD .048T SS	2
41	046425	SPACER,PHEN--.250X.437 .250L	1
42	001327	SCR MACH PAN HD 10-24X.750L	1
43	032489	WDMT,BRACKET--DUMP VALVE	2
44	048783	HOSE,RBR,FLEX--4.37-7.50L	2
45	049999	CLAMP,HOSE--2.25 MAX DIA,WORM	2
46	005591	NUT,SELF RETAINING--.250-20	14
47	003293	NUT,HEX--.375-16,ZN PLT	2
48	004214	WSHR LK .390ID.683OD.094TSPLT	3
49	054318	BRACKET,ANGLE--FRONT PANEL,MTG	2
50	003436	NUT,SPEED,J--.250-20,.63X.96,Z	2
51	003249	SCR CAP HEX HD .312-18X1.25L	1
52	054684	BRACKET,SWITCH--2.00X2.87,16GA	1
53	004384	WSHR FLT .406ID.875OD.064T STL	1
55	003243	SCR CAP HEX HD .312-18X.625L	3
56	051552	ANGLE,STL--1.50X1.50X24.00L	1
57	054087	BRACKET,ANGLE--1.25X2.00X1.00L	1
60	050025	BAR-CASTER SUPPORT 26&32 AUTO	2
61	005423	SCR CAP HEX HD .250-20X2.00L	2
62	044112	CLAMP,HOSE--2.50 MAX DIA,WORM	2
63	003294	NUT, HEX JAM	1

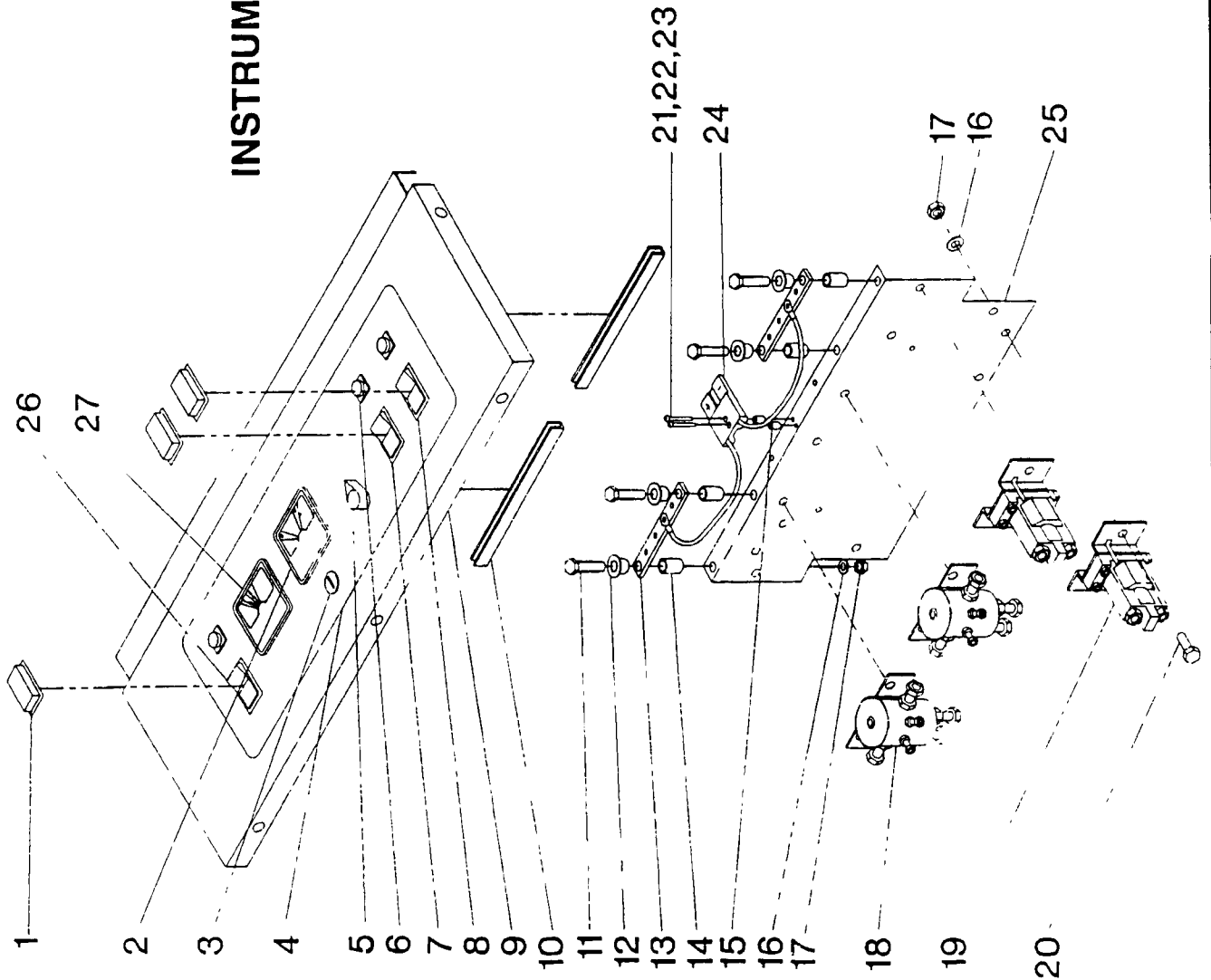


BRUSH HEAD ASSEMBLY

DET	PART NO.	DESCRIPTION	QUANT
1	003265	SCR CAP HEX HD .375-16X1.50L	1
2	003294	NUT,HEX JAM--.375-16,ZN PLT	11
3	024368	ACTUATOR,DC--36V,500LBS,6IN	1
4	004215	WSHR LK 398ID.694OD.040T EXT	1
5	054502	BSHG,SLV-- 377ID.498OB1.00FLNG	2
6	034449	WDMT,BRACKET--ANGLE,BRUSH LIFT	1
7	048946	STUD-- 375-16X4 37L STL	2
8	025884	ASM,MOTOR--36V W/TERMINALS	2
8	39304	MOTOR BRUSHES -4/MTR	4
9	054981	MOUNT,MOTOR PLATE	2
10	051898	PULLEY,GRVD--10 GRV,1.400 PD	2
11	040407	KEY,SQUARE--.187 SQ,1.125 LONG	2
12	054999	BELT,V--10V'S,18 00 PITCH LG	2
13	053115	PULLEY,GRVD--10 GRV,3 0 PD	2
14	027179	BRG,W/PB--.625ID,MALLEABLE IRN	4
15	034698	ASM,ARM--W/BALL JOINTS,	1
16	054985	BRUSH MOUNT BLOCK	1
17	004214	WSHR LK .390ID.683OD.094TSPLT	13
18	034625	WDMT,BRUSH HEAD--KA-280 W/EL	1
19	055011	FITTING,3/8ML TO .5 BARBED,BR	1
20	034627	WDMT,MANIFOLD--1X1X26 5	1
21	002242	SCR CAP SOC HD 1/4-20x.625	12
22	002278	WSHR LK 262ID.489OD.062TSPLT	20
23	004208	WSHR FLT .281ID.500OD.036T STL	20
24	002260	SCR CAP SOC HD .250-20X1.00L	4
25	002290	SCR SET CUP PT 312-18X.250LZE	2

DET	PART NO.	DESCRIPTION	QUANT
26	005387	SCR SET CUP PT 312-18X 500L	2
27	048953	BALL JOINT	4
28	034145	WDMT,BRUSH HEAD SUPPORT	1
29	005479	NUT,HEX LOCK--.250-20,NYLOC,ZN	2
30	026922	BLOCK,TERMINAL--2 POLE,70 AMPS	1
31	005482	SCR TPG F PAN HD 10-24X 875L	4
32	002446	SCH SHLDR SOC HD 25-20X 37L	2
33	005487	SCR TPG F PAN HD 10-24X 500L	2
34	046648	SPRING,COMP 344D 687L 032WD	1
35	001248	SCR MACH RD HD 6-32X1 00L	2
36	004250	WSHR LK .148ID 250OD 031TSPLT	2
37	004200	WSHR FLT .156ID 375OD 065T BRS	2
38	026515	SWITCH,PUSH--SPDT 21A,240V	1
39	003274	NUT,HEX-- 6-32,ZN PLT	2
40	005316	SCR TPG F PAN HD 10-24X 375L	2
41	054507	BRACKET,STL--SWITCH,LOWER LIM	1
42	005592	BOLT,U--10-24,1.125R,3 00L	1
43	005297	WSHR LK 200ID 334OD 047TSPLT	2
44	003279	NUT,HEX-- 10-24,ZN PLT	2
45	054499	BRACKET,U-3 25X3 87X 75	1
46	005279	NUT,HEX LOCK-- 375-16 NYLOC	2
47	003447	CAP SCREW	16
48	002290	SET SCREW	8
49	034624	WDMT, SHAFT	2
50	054979	BRUSH	2
51	002465	SCR CAP SOC HD 250-20x 75 L	4

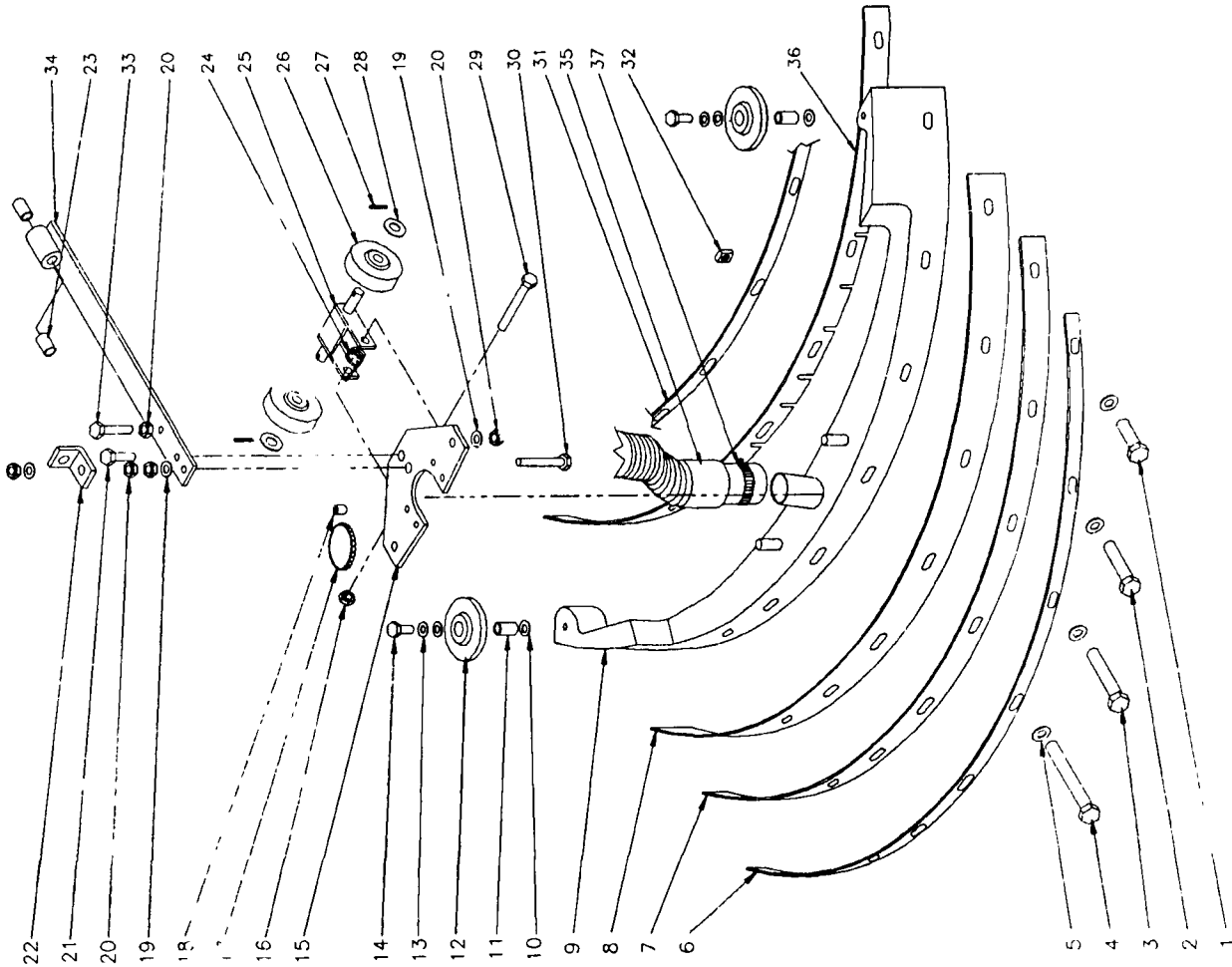
INSTRUMENT PANEL ASSEMBLY



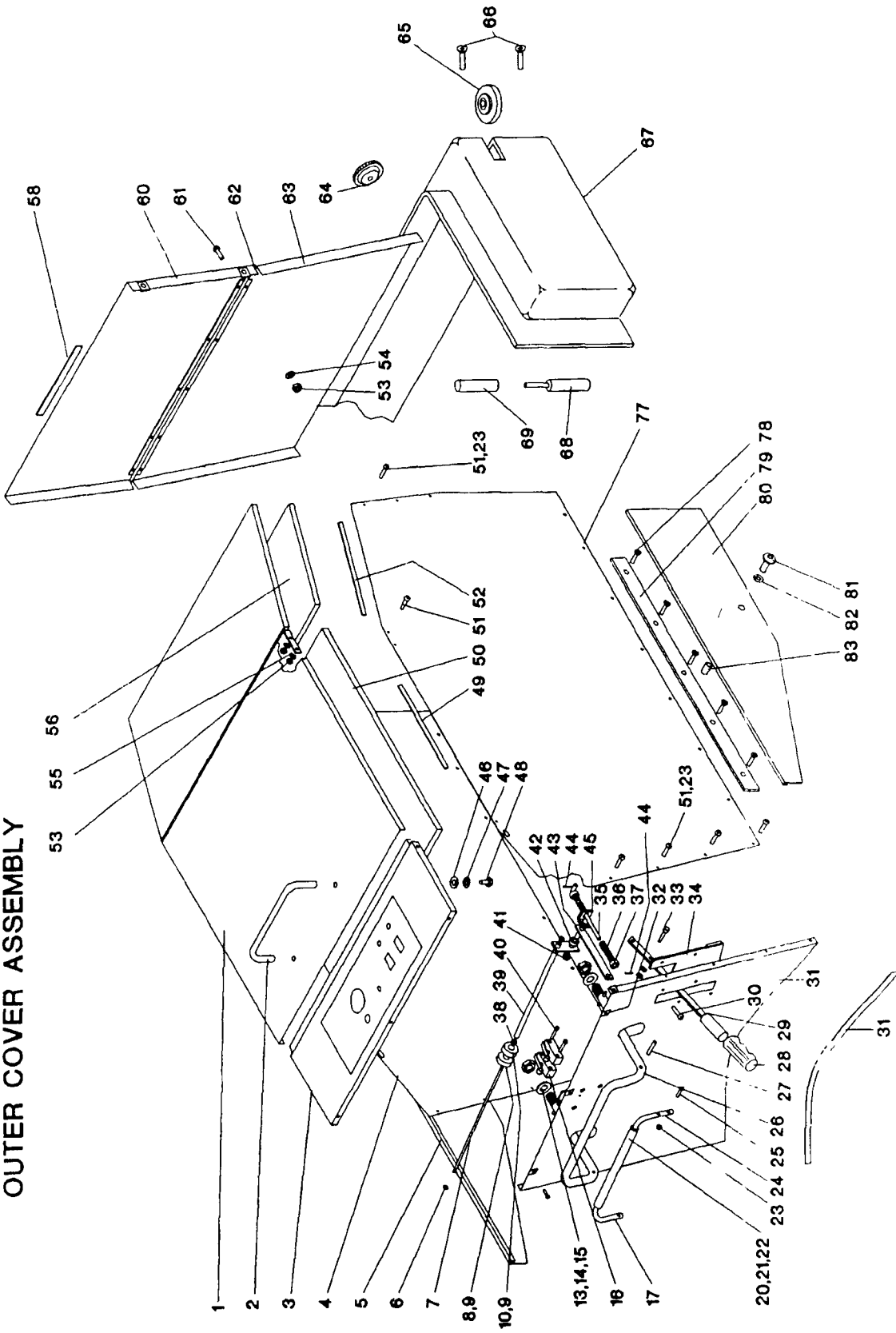
DET PART NO.	DESCRIPTION	QUANT
1	SWITCH PROTECTOR	3
2	VOLTMETER	1
3	ASM, SWITCH--KEYLOCK	1
4	LABEL, INST--AUTO CNTRL, PANEL	1
5	KNOB-WATER CONTROL	1
6	LIGHT, INDICATOR--RED, 36VDC	3
7	SWITCH, RKR--SPST, 10A, 250V, 3/4H	1
8	SWITCH, RKR--SPST, 10A, 250V, 3/4H	1
9	PANEL, INSTR--32 AUTO, W/ELEC LT	1
10	U-CHNL, PLSTC--RS 98251, 7 62 L	2
11	SCR CAP HEX HD 250-20X1 50L	4
12	WSHR SHLDR 250ID 562OD 120T, NY	4
13	BAR, STL-- 187X 750X 4 00 LONG	2
14	SPACER, PLSTC--500X 625, 500L	4
15	SPACER, PHEN-- 250X 437, 250L	2
16	WSHR LK 262ID 489OD 062T SPLT	12
17	NUT, HEX-- 250-20, ZN PLT	12
18	SOLENOID, DOUBLE THROW--SWITCH	2
19	SOLENOID--SWITCH, SPNO, 36VDC	2
20	SCR CAP HEX HD 250-20X 500L	8
21	SCR MACH RD HD 6-32X1 25L	2
22	WSHR LK 148ID 250OD 031T SPLT	4
23	NUT, HEX. 6-32 ZN PLT	4
24	CHARGER PLUG	1
25	PANEL JUNCTION AUTOMATICS	1
26	SWITCH, RKR--DPDT, 20A, MOMENTARY	1
27	AMMETER- DC, 0-50A COLOR CODED	1

SQUEEGEE ASSEMBLY

DET PART NO.	DESCRIPTION	QUANT
1	SCR CAP HEX HC .250-20X1.50L	2
2	SCR CAP HEX HC .250-20X2.50L	2
3	SCR CAP HEX H... .50-20X3.00L	2
4	SCR CAP HEX HD .250-20X3.50L	2
5	WSHR FLT .281"DIA... .062T STL	10
6	BAR, STL-- .125X1.00, 34.14 LONG	1
7	RUBBER BACKUP-- .125X2.00, 34.4L	1
8	RUBBER, SQUEEGEE-- .187X2.75, 35L	1
9	CASTING, SQUEEGEE-- 26 AUTO, HV	1
10	WSHR FLT .344ID, 7500D, 060T STL	4
11	SPACEH. STL-- .312X.437, .43L	2
12	WHEEL-- 4.00DIA, .438BORE, .688HB	2
13	WSHR LK .326ID, .586OD, .078TSPLT	2
14	SCR CAP HEX HD .312-18X1.00L	2
15	WDMT, PLATE-- SQUEEGEE	1
16	NUT, HEX LOCK-- .375-16, ZN PLT	1
17	KNOB	2
18	SCR SET CUP FT .375-16X.500L	4
19	WSHR LK .390ID, .683OD, .094TSPLT	3
20	NUT, HEX JAM-- .375-16, ZN PLT	5
21	SCR CAP HEX HD .375-16X1.00L	1
22	BRACKET, ANGLE-- 1.25X1.25X1.00L	1
23	BRG, SLV-- .500ID, .625OD, .750W	4
24	SPRING, TRSN, 791D 1.09L, 106WD	1
25	WDMT, BRACKET-- SQUEEGEE WHEEL	1
26	WHEEL-- 3.00DIA, .390BORE, .875HB	2
27	PIN, COTTER-- .094X1.000 LONG	2
28	WSHR FLT .406ID, .625OD, .036T STL	2
29	SCR CAP HEX HD .375-16X2.75L	2
30	SCR CAP HEX HD .375-16X2.75L	2
31	BAR, STL-- .125X1.00, 31.14 LONG	1
32	NUT, SELF RETAINING-- 250-20	10
33	SCR CAP HEX HD 375-16X2.25L	1
34	WDMT, SQUEEGEE BAR-- PIVOT TUBE	1
35	ASM, HOSE-- 2.0 DIA W/CUFFS	1
36	RUBBER, SQUEEGEE-- .125X1.75, 33L	1



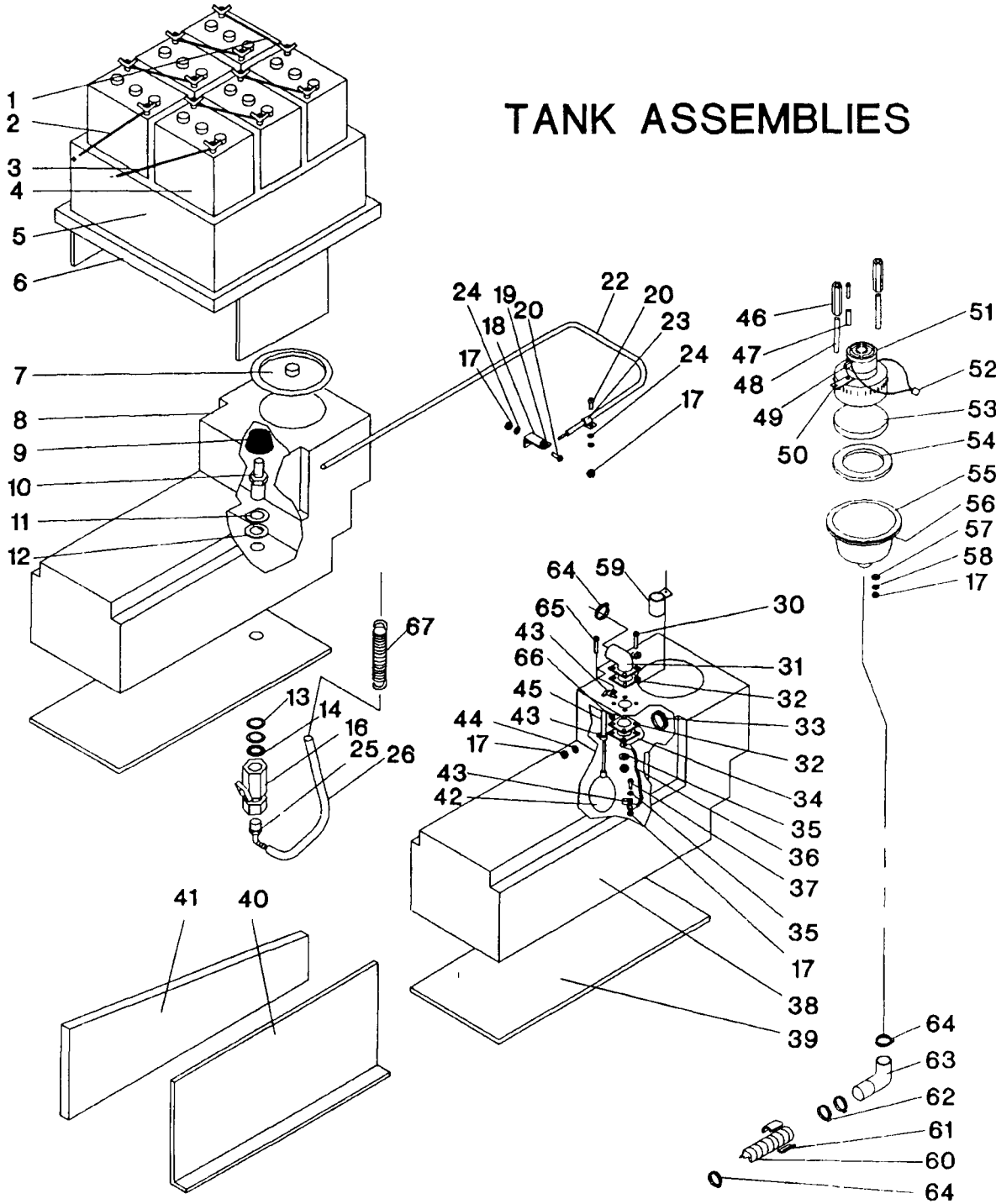
OUTER COVER ASSEMBLY



DET	PART NO.	DESCRIPTION	QUANT
1	032746	ASM,COVER--	1
2	048071	HANDLE,STL	1
3	054413	PANEL,INSTR--32 AUTO,W/ELEC LT	1
4	050072	PANEL OUTER COVER-LEFT	1
5	048681	PANEL,LOWER--LEFT,AUTO'S	1
6	048512	RING,RTNG--EXT, 250 SHAFT,5133	2
7	053691	RD,STL--.250DIA,13.95 LONG	1
8	053136	CAM,CONTROL--REVERSE SWITCH	1
9	001276	SCR SET CUP PT 10-24X.250L	2
10	053137	CAM,CONTROL--BRAKE SWITCH	1
13	003369	NUT,HEX JAM--.625-11,ZN PLT	2
14	050979	WSHR FLT 625ID1.250D.120T STL	2
15	005453	PIN,ROLL--.187 DIA,1.000L	2
16	026886	SWITCH,PUSH--SPDT,20A,125-250V	2
17	051416	BAR,HANDLE-LEFT,26&32 AUTO	1
20	033427	ASM,SQUEEZE HANDLE--26&32 AUTO	1
21	049965	HANDLE-TRACTION BAR	1
22	005450	PIN,ROLL--.187 DIA, .880L	1
23	005480	NUT,HEX LOCK-- 10-24,NYLOC	15
24	051415	BAR,HANDLE-RIGHT,26&32 AUTO	1
25	005457	SCR MACH PAN HD 10-24X1.00L	1
26	034139	WDMT,HANDLE--26&32 AUTO,CHROME	1
27	005474	PIN,ROLL--.187 DIA,1.375L	2
28	047418	HANDLE-GRIP	2
29	032492	ASM,HANDLE--SQUEEGEE	1
30	005478	SCR MACH RD HD .250-20X.500L	4
31	055017	PANEL,REAR--SS,KA-280B	1
31	052528	WEAR STRIP-REAR PANEL	1
32	003436	NUT,SPEED,J--.250-20,.63X.96,Z	5
33	004361	PIN,CLEVIS--.375X1.000 LONG	1
34	032544	ASM,LOCK--SQUEEGEE	1
35	053296	ROD,STL-- 312 DIA, 6.00 LONG	1
36	053521	SPRING,COMP--.480D,2.75L,.059W	2
37	048987	COLLAR-CENTERING SPRING	2
38	027224	BRG,FLANGE--.250IDX.375ODX.37W	2
39	034142	WDMT,CLUTCH ACTUATOR--W/C'BORE 1	1

DET	PART NO.	DESCRIPTION	QUANT
40	001489	SCR MACH RD HD 6-22X1 75L	2
41	005479	NUT,HEX LOCK - 20-20 NYLOC,ZN	1
42	046425	SPACER,PHEN-- 250X 437, 250L	1
43	053297	BAR,STL--.188X 50X8 125L	1
44	004297	PIN,COTTER-- 094X 750 LONG	2
45	034011	WDMT,BRACKET--CABLE,ACTUATOR	1
46	005213	WSHR FLT .281ID 562OD 063T STL	2
47	002278	WSHR LK .262ID 489OD 062TSPLT	2
48	002243	SCR CAP HEX HD 250-20X 625L	2
49	048683	WEAR STRIP-SIDE PANEL REAR	2
50	048506	COVER-BATTERIES	1
51	005456	SCR MACH PAN HD 10-24X 500L	20
52	048682	WEAR STRIP-SIDE PANEL FRONT	2
53	003279	NUT,HEX-- 10-24,ZN PLT	14
54	005297	WSHR LK 200ID 334OD 047TSPLT	10
55	004253	WSHR LK .204ID 410OD 025T EXT	4
56	049845	SOUND RETAINER - VAC FAN	1
58	048684	WEAR STRIP-UPPER FRONT PANEL	1
60	052597	PANEL,UPPER FRONT--S STEEL,321	1
61	005316	SCR TPG F PAN HD 10-24X 375L	10
62	052658	HINCE BUTT--1 25X24 50 LONG	1
62	053944	GASKET,FOAM--.062X 500X22 50L	2
63	052598	PANEL,LOWFR FRONT--SS,32 AUTO	1
64	047484	KNOB	2
65	049261	WHEEL--3.00DIA, 380BORE, 875HB	1
66	002241	SCR MACH FLAT HD 250-20X1 00L	2
67	055004	COVER, BRUSH	1
68	054997	AXLE,BUMPER WHEEL-BOTTOM AXLE	1
69	055003	AXLE, BUMPER WHEEL, TOP SLEEVE	1
77	050073	PANEL-OUTER COVER-RIGHT	1
78	002252	SCR MACH FLAT HD 250-20x 750L	8
79	048078	BAR, SPACER--27 LONG	2
80	048680	PANEL,LOWER--RIGHT,AUTO'S	1
81	001486	SCR MACH BTN HD 500 13X2 50L	2
82	004331	WSHR FLT .500ID1 500D 125" NYL	2
83	052771	SPACER,STL--.506X 750,1 500L,Z	2

TANK ASSEMBLIES



DET	PART NO.	DESCRIPTION	QUANT
1	025274	ASM,WIRE-- 6GA,BLK,14.0L,RINGS	1
2	025275	ASM,WIRE-- 6GA,RED, 8.0L,RINGS	4
3	025085	ASM,WIRE-- 6GA,BLK,10.2L,RINGS	4
4	026512	BATTERY--6VOLT,270AH,WET	6
4	026551	BATTERY-- 6V,275AH,DRY	6
5	053534	BOX,BATT--32' AUTO'S,MACHINED	1
6	032938	FRAME - BATTERY SUPPORT	1
7	051107	LID-SOLUTION TANK	1
8	051449	SOLUTION TANK--'MACHINED'	1
9	048848	LINE STRAINER	1
10	048776	ADPTR,PP-BS--3/4 MPTX.500 BOSS	1
11	004472	WSHR FLT 1.08ID.06OD W/FLAT	1
12	046980	ASM,GASKET--SCREEN	2
13	004330	WSHR FLT 1.05ID1.50OD.036T STL	2
14	008114	NUT,HEX LOCK--.750 IPT,CONDUIT	1
16	048654	VALVE-WATER V-75	1
17	003279	NUT,HEX-- 10-24,ZN PLT	11
18	051615	LEVER,WATER--VALVE	1
19	044826	CONNECTOR-WATER VALVE CABLE	1
20	001295	SCR MACH RD HD 10-24X.625L	1
22	032548	ASM,CABLE--WATER	1
24	004253	WSHR LK .204ID.410OD.025T EXT	3
25	006130	ELBOW,PP-HS--3/4 MPTX1/2HS,PLS	1
26	055006	TUBE,VINYL--.500X.750,21.00L	1
30	002210	SCR MACH RD HD 10-24X1.50L	4
31	032542	ASM,ELBOW--INLET-TOP	1
32	048257	GASKET-INLET ELBOW	2
33	046831	GROM--1.31 ID,1.50 MHD,.062 PA	1
34	032543	ELBOW ASM-INLET-BOTTOM	1
35	005297	WSHR LK .200ID.334OD.047TSPLT	5

DET	PART NO.	DESCRIPTION	QUANT
36	033521	ASM,CHAIN-- BALL LINK 7.37L	1
37	001327	SCR MACH PAN HD 10-24X.750L	2
38	051448	VAC TANK--'MACHINED',D.DRIVE	1
40	048818	GUARD-BRUSH LIFT LEVER	1
41	048817	SUPPORT-TANK	1
42	026947	SWITCH,TILT--MERCURY	1
43	051466	CLAMP,LOOP--.297 CLOSED ! D	3
44	224074	WSHR SEAL .203ID SS	4
45	051692	PIPE,PVC--.50 IDX.62 ODX6 87 L	1
46	048843	BAR,ALUM,HEX-- 500, 3.00 LONG	2
47	055028	TUBE,STL--.3125 O.D X 2.050 L	2
48	053149	STUD--10-24 X 6.25L,ZN PLTD	2
49	039301	BRUSH,MTR--FOR 23412	2
50	055027	LUG MOTOR MOUNT--3-STAGE VAC	2
51	023412	MTR,VAC- 3KV,BYP,3STG,PD	1
52	026573	CONN PLUG--2-WR,LINE CONN,MALE	1
53	051434	FILTER-BAG GUARD	1
54	111701	GASKET 7.50X6 25X.18	4
55	054990	VAC POT--3 STG (MACH)	1
56	055012	GASKET-VAC POT 10" INSIDE	1
57	048881	SPACER,RBR--.130X1.00, .187L	2
58	004226	WSHR FLT .234ID1.125OD.036TSTL	2
59	034628	WDMT,VAC HOSE SUPPORT--AUTO	1
60	054891	HOSE,GRAY--VINYL 1.50D X 19.0L	1
61	055150	CLAMP,PVC--	2
62	044112	CLAMP,HOSE--2.50 MAX DIA,WORM	2
63	034636	ASM,ELBOW--3-STG VAC POT	1
64	046688	CLAMP,HOSE--	3
65	005457	SCR MACH PAN HD 10-24X1.00L	1
66	005480	NUT,HEX LOCK-- 10-24,NYLOC	1
67	053321	SPRING--	1

SERVICE DIAGNOSIS - TROUBLESHOOTING CHECKLIST

PROBLEM

CORRECTION

MACHINE WILL NOT MOVE

1. Loose wire.
2. Battery condition low.
3. Clutch requires adjusting
4. Drive belt slipping.

1. Reconnect
2. Check voltmeter and charge batteries
3. See Adjust Clutch.
4. Tighten belt.

BRUSH DRIVE MOTOR WILL NOT START

1. Brush Drive Switch faulty
2. Loose wire.
3. Battery condition low.
4. Circuit breaker tripped.
5. Pins left in brush plate tripping circuit breaker.

1. Replace switch.
2. Reconnect.
3. Check voltmeter and charge batteries
4. Reset by pushing circuit breaker button
5. Remove pins and store in holes in frame

MACHINE STREAKING A CLEANED FLOOR

1. Foreign materials lodged under rear squeegee blade.
2. Insufficient water flow to brushes.
3. Worn squeegee blades
4. Worn brushes or pads.
5. Improper squeegee adjustment.

1. Raise squeegee and clean squeegee blade
2. Clean screen and fresh solution tank and eliminate any restrictions in lines.
3. Replace squeegee blade
4. Replace brushes or pads.
5. See Squeegee Adjustments.

VACUUM SUCTION BLOCKED

1. Clogged pick-up tube.
2. Lint Filter dirty.
3. Air leaks around vac motor.
4. Clogging at elbows and hose entering recovery tank

1. Remove accumulations.
2. Clean lint filter.
3. Examine gasket for damage or warped motor well
4. Remove elbow and clean.

SHORT OPERATING TIME

1. Battery charge condition very low.
2. Constant scrub operation in high pressure (strip) position
3. Corroded wires or connectors

1. Recharge batteries fully before beginning operation
2. Use high pressure more sparingly.
3. Clean thoroughly.

CIRCUIT BREAKER KEEPS TRIPPING

1. Pins left in brush plate
2. Pads or brushes rubbing

1. Remove pins and store in holes in frame
2. Install original equipment accessories

WATER WILL NOT COME ON

1. Water line disconnected
2. Cable is loose on water valve

1. Reconnect water solution line to brush head
2. Tighten cable to valve.

MACHINE PULLS TO ONE SIDE

1. Low tire pressure.

1. Increase tire pressure to 60 lbs

SQUEEGEE LEVER DOES NOT PICK UP

1. Squeegee cable off of pulleys.
2. Squeegee height requires adjustment.

1. Place cable in pulleys once again
2. See adjustment instructions in catalog

CHARGER WILL NOT COME ON

1. DC or AC cords not connected
2. Fuse defective.
3. Polarity reversed

1. Connect.
2. Replace fuse with standard 15 Amp fuse
3. Change polarity so voltmeter on instrument panel reads correctly

TIRE MARKS ON FLOOR

1. Low tire pressure

1. Pump tires to 60 lbs. of pressure or use optional foam filled tire (No 038660).

CONTROL BAR WON'T RETURN TO NEUTRAL

1. Return springs disconnected.
2. Return spring collar not adjusted properly

1. Reconnect spring.
2. Adjust collar.

BRUSHES SHOW EXCESSIVE BOUNCE AND VIBRATION WHEN SCRUBBING.

1. Improper brush pressure
2. Screws on bearing loose
3. Worn bearings
4. Worn shaft.

1. Adjust up or down until smooth operation
2. Tighten screws.
3. Replace.
4. Replace shaft.

THE KENT LIMITED WARRANTY

Your Kent equipment which has been manufactured, tested and inspected in accordance with carefully specified engineering requirements, is warranted to be free from defects in material and workmanship. This warranty is, however, subject to the following qualifications, conditions, and limitations which are set forth to provide you and all users of the Kent equipment with information concerning the duration, extent, availability, and applicability of this Kent limited warranty, the procedure to be taken to obtain its performance, and other information concerning the Kent warranty policy.

The Kent Limited Warranty is extended to the original end user as follows:

Automatic scrubber vacs and battery operated burnishers 3 year parts replacement and 1 year service labor warranty (see instruction manual for battery guarantee). Battery chargers are guaranteed by charger manufacturer for a period of 1 year.

Replacement parts guaranteed for 90 days from date of installation against defects in material and workmanship.

The 10 year poly component replacement warranty with 1 year service labor extends for a period of ten (10) years from the date of the original purchase of the Kent equipment by the original purchaser. This warranty will not cover damage attributable to the following:

- (1) Improper, unreasonable or negligent use or abuse of the equipment.
- (2) Use of equipment with hot water or high temperature above 130 degrees Fahrenheit (54 degrees centigrade).
- (3) "Warpage", "Creepage", or "Distortion" of part so long as the same does not interfere with normal operation.
- (4) Abrasions or punctures of the equipment.

The start date of the warranty coverage shall be the purchase date of the original end user or six months from the date the machine was shipped from the factory, whichever comes first.

PARTS OF KENT EQUIPMENT NOT COVERED BY WARRANTY

Certain parts of Kent equipment require replacement in the ordinary course of use due to normal wear by reason of their characteristics. These are normal wear items such as cords, gaskets, switches, bumpers, carbon brushes, handle grips, bags, hoses, bearings, etc.

EXCEPTIONS AND EXCLUSIONS FROM WARRANTY

This equipment is required to be used on electric current as indicated on the data plate. Otherwise damage, defects, malfunctions or other failures of the equipment arising from use on electric current not as indicated are excepted and excluded from this warranty. Defects, malfunctions, failure or damage of the equipment caused by improper, unreasonable or negligent use or abuse while in the possession of the purchaser are likewise excluded from this warranty. If repair is done on your equipment by anyone other than those designated as authorized to perform such work without first having obtained factory instructions, The Kent Company, at its sole option, may determine that this warranty will not apply and that reimbursement for such repair will not be made because of the failure to comply with such factory specified instructions.

PROCEDURE TO BE TAKEN TO OBTAIN PERFORMANCE OF WARRANTY REPAIR

To secure repair of the equipment or any warranted part under this warranty, the following procedure should be taken. The inoperative equipment or warranted parts, together with satisfactory evidence of the purchase date, must be delivered, with shipping and delivery charges prepaid, to one of the following:

- (1) The dealer from whom purchased;
- (2) Any Kent distributor's service department in the United States;
- (3) Any Kent authorized service station in the United States.

If you are unable to locate any of the foregoing, you may write or otherwise communicate with The Kent Company for instructions before repair service is performed by anyone else. In such event, The Kent Company will provide either the location of a closely available Kent distributor service department or Kent authorized service station or other factory instructions. Upon compliance with the above procedure, all warranted defects will be repaired at no additional charge or expense to the customer, and the repaired product returned to the customer with all shipping and delivery charges prepaid. In following the procedures above set forth, PLEASE MAKE CERTAIN to state the Kent model, type and serial number as shown on the dataplate of the equipment.

REPLACEMENT

In the event of a defect, malfunction or failure of your Kent equipment or any warranted part to conform with this warranty, The Kent Company may, at its sole option and own expense, replace the equipment or any warranted part with another new identical or reasonably equivalent model or part in lieu of repairing the defect.

NO REFUND OF PURCHASE PRICE

The Kent Company will not, as a matter of its warranty policy, refund the customer's purchase price.

WARRANTY REGISTRATION CARD FOR YOUR KENT EQUIPMENT AND REQUEST FOR INFORMATION

Your Kent Company distributor from whom you purchased your equipment is responsible for the registration of your warranty with the factory. We ask that you cooperate with your distributor in supplying the necessary information on the warranty card so that we may better serve you. Any information or questions you may have concerning your Kent equipment or this warranty may likewise be secured from the factory. This warranty gives you specific legal rights, and you may also have other rights which vary from state to state.

THE KENT COMPANY

P.O. BOX 1665 ELKHART, INDIANA 46515