



Electronic Service Manuals

This electronic document is provided as a service to our customers. We do not create the contents of the information contained in this document. Should you have detailed questions pertaining to the information contained in this document, you may contact Michco, or the manufacturer which provided the original information in this electronic deliverable. Michco's only part in this electronic deliverable was the electronic assembly process.

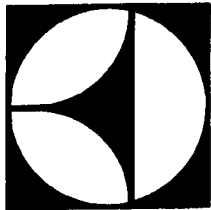
You may contact Michco through the following methods:
Phone (517) 484-9312 or (800) 331-3339 MI, OH, IN only
2011 N. High St. -- Lansing, Michigan -- 48906
Fax: (517) 484-9836
Email: CustServ@Michco.com
Web site: www.Michco.Com
Parts Web site: www.FloorMachineParts.Com

Order Parts on Line at:
www.FloorMachineParts.Com

Directly to Parts & Service:
By Email: **Shop@Michco.com**
By Fax: (517) 702-2041
By Voice: Use numbers above.

Serving the Cleaning Industry Since 1922

Notice: All copyrighted material remains property of original owners, all trademarks are property of respective owners. Manuals are subject to Manufacturer's reproduction limitations. Originals or reproductions were provided by manufacturers through a request. We make no warranty as to the correctness of information provided in this document and you assume all risk.



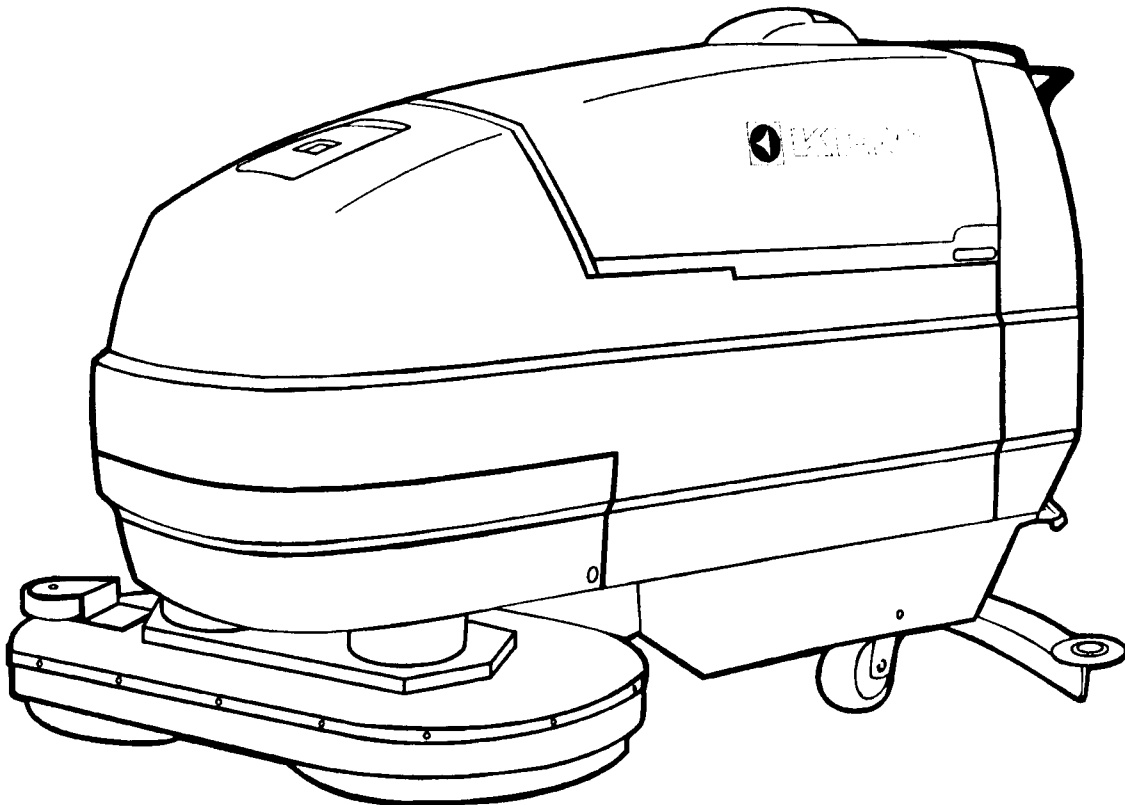
KENT

PARTS MANUAL

SERVICE • PARTS

AUTOMATIC SCRUBBERVAC

KA-27 DuraScrub



EDITION 1
MARCH 1996
083359

THE KENT COMPANY • 2310 INDUSTRIAL PARKWAY • P.O. BOX 1865 • ELKHART, IN 46515, U.S.A.
TEL: (219)293-8661 • (800)334-1083 • FAX: (219)295-8610 • TELEX: 25-8331 KENT CO EKR

TABLE OF CONTENTS

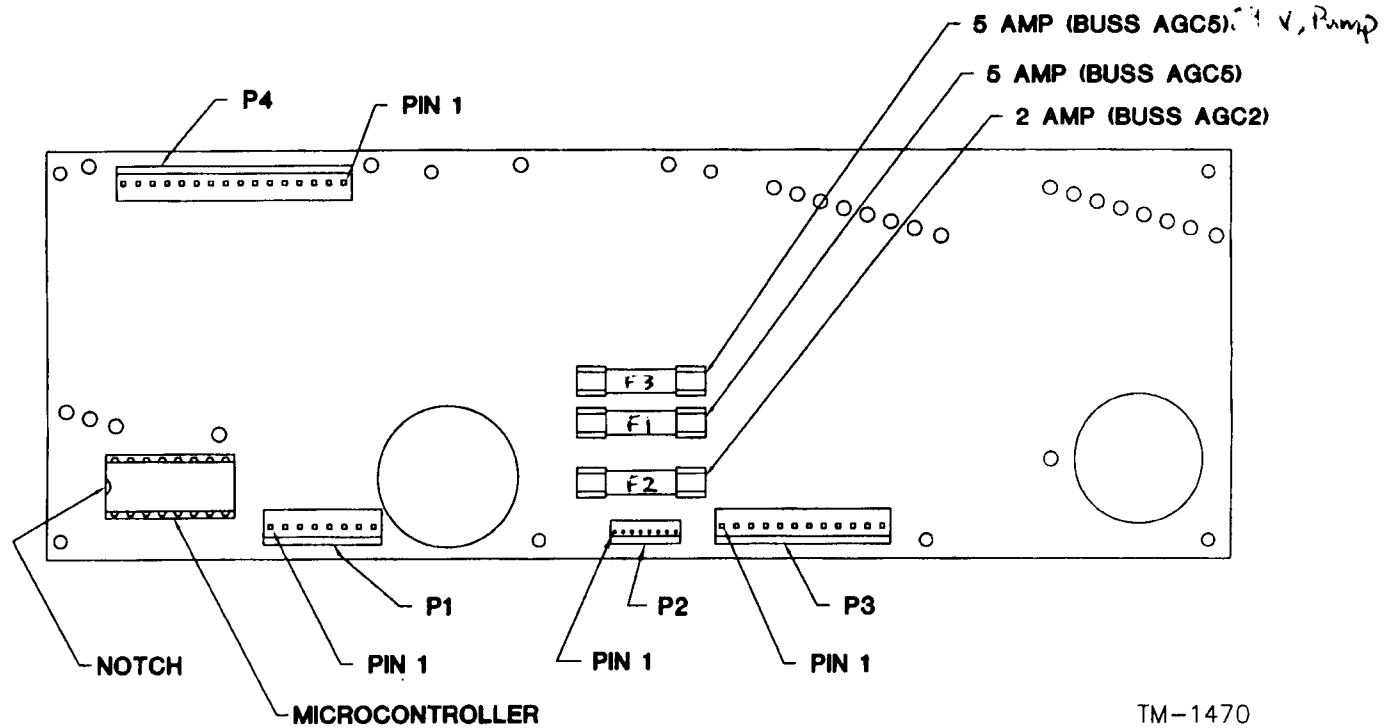
KA-27 SOLUTION TANK	2,3
KA-27 RECOVERY TANK	4,5
KA-27 BACK PANEL	6,7
WIRE DIAGRAM	8,9
KA-27 SQUEEGEE	10,11
KA-27 BRUSH HEAD	12,13
KA-27 REAR COVER	14,15
KA-27 BRUSH COVER	16
KA-27 FRAME ASSEMBLY	17
KA-27 CHASSIS ASSEMBLY	18

RECOMMENDED SPARE PARTS

Recommended spare parts should be ordered and stocked to avoid possible down time in case of failure, breakage, or normal wear.

<u>PART NO.</u>	<u>DESCRIPTION</u>	<u>QUANT.</u>
035302	ASM,HOSE--SQUEEGEE, BLK,22"L	1
035129	ASM,HOSE--TANK, BLK,36"L	1
035179	ASM,HOSE--DUMP,1,50 DIA,BLK,40"L	1
039276	BRUSH,MTR--FOR 027153 MOTOR	4
039428	BRUSH,MTR--FOR 024373 VAC MTR	2
047484	KNOB	1
056425	RUBBER,SQUEEGEE--27" AUTO,FRONT	1
056427	RUBBER,SQUEEGEE--27" AUTO,REAR	1
056426	RUBBER,SQUEEGEE--27" AUTO,BACKUP	1
056466	GASKET,SQUEEGEE--.187 x 2, 9.75L	1
056793	FILTER,SCREEN--1.85ID,SS	1

DURASCRUB SYSTEM CIRCUIT BOARD CONNECTIONS



TM-1470

CONNECTOR P1

PIN 1	TANK PROBE 1 (-), NO.57
PIN 2	TANK PROBE 2 (+), NO.58
PIN 3	BRUSH UP SWITCH (-), NO.17
PIN 4	BRUSH UP SWITCH (+), NO.18
PIN 5	BRUSH DOWN SWITCH (-), NO.23
PIN 6	BRUSH DOWN SWITCH (+), NO.22
PIN 7	ON/OFF HANDLE SWITCH (-), NO.55
PIN 8	ON/OFF HANDLE SWITCH (+), NO.56

PIN 4	(-) JUNCTION BAR, NO.60
PIN 5	(-) JUNCTION BAR, NO.61
PIN 6	(-) JUNCTION BAR, NO.62
PIN 7	WATER PUMP (+), NO.51
PIN 8	WATER PUMP (-), NO.52
PIN 9	LOAD INDICATOR (+), NO.64
PIN 10	LOAD INDICATOR (-), NO.59
PIN 11	BATTERY LOW INDICATOR (+), NO.4
PIN 12	BATTERY LOW INDICATOR (-), NO.8

CONNECTOR P2 (KEYPAD)

Function Pin combinations:

GROUND	PIN 1
WATER FLOW SELECT	PIN 2 & 6
WATER FLOW ON/OFF	PIN 3 & 6
BRUSH PRESSURE (+)	PIN 4 & 6
BRUSH PRESSURE (-)	PIN 5 & 6
BRUSH INSTALL	PIN 2 & 7
BRUSH REMOVE	PIN 3 & 7
VACUUM ON/OFF	PIN 4 & 7
BRUSH ON/OFF	PIN 5 & 7

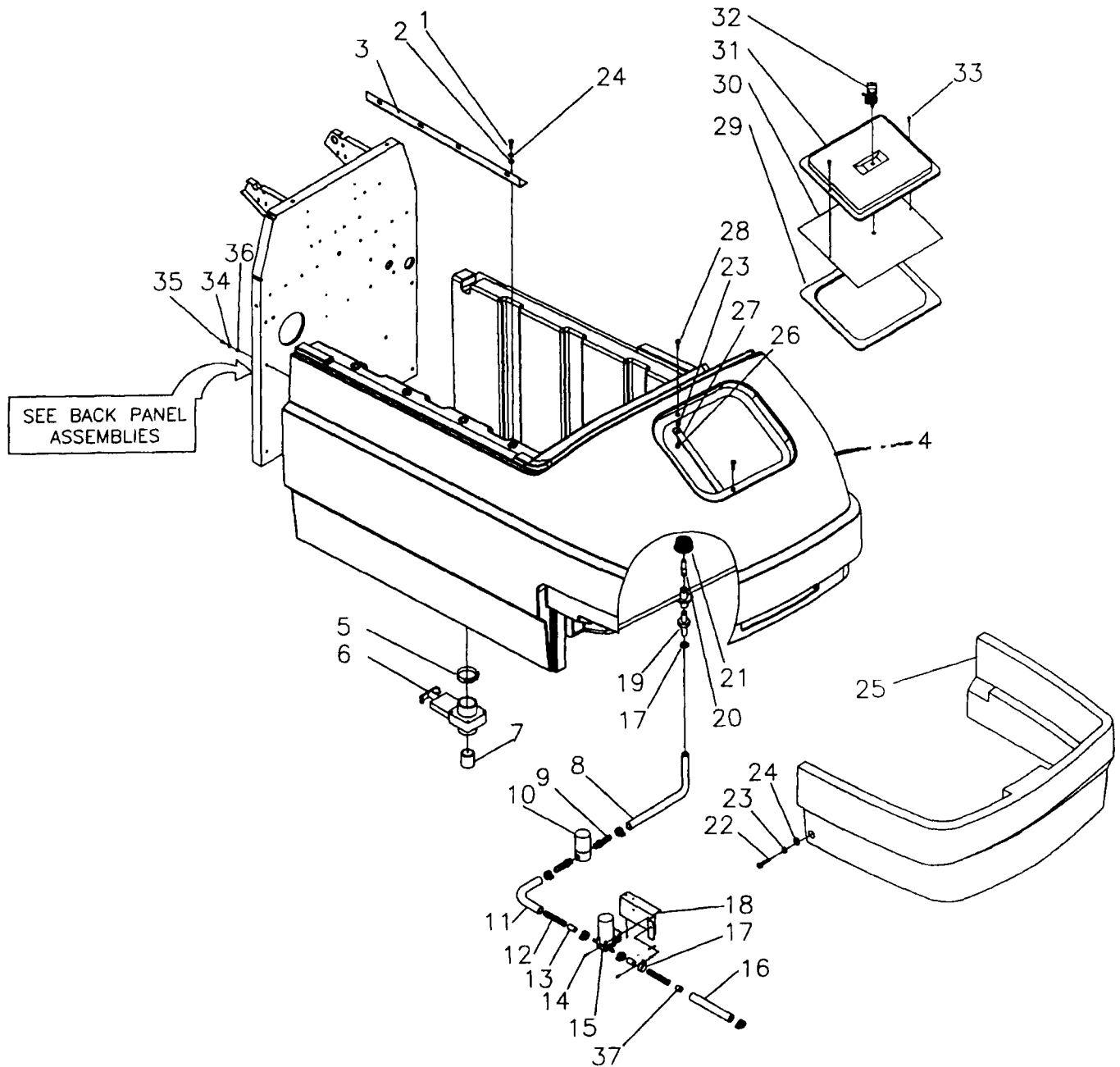
CONNECTOR P4

PIN 1	BRUSH DOWN SOLENOID (+), NO.33
PIN 2	BRUSH DOWN SOLENOID (-), NO.32
PIN 3	BRUSH UP SOLENOID (+), NO.25
PIN 4	BRUSH UP SOLENOID (-), NO.20
PIN 5	NOT USED
PIN 6	NOT USED
PIN 7	REMOVE SOLENOID (+), NO.47
PIN 8	REMOVE SOLENOID (-), NO.48
PIN 9	INSTALL SOLENOID (+), NO.43
PIN 10	INSTALL SOLENOID (-), NO.44
PIN 11	WATER VALVE (+), NO.49
PIN 12	WATER VALVE (-), NO.50
PIN 13	BRUSH ON/OFF SOLENOID (+), NO.45
PIN 14	BRUSH ON/OFF SOLENOID (-), NO.46
PIN 15	VAC SOLENOID (+), NO.53
PIN 16	VAC SOLENOID (-), NO.54

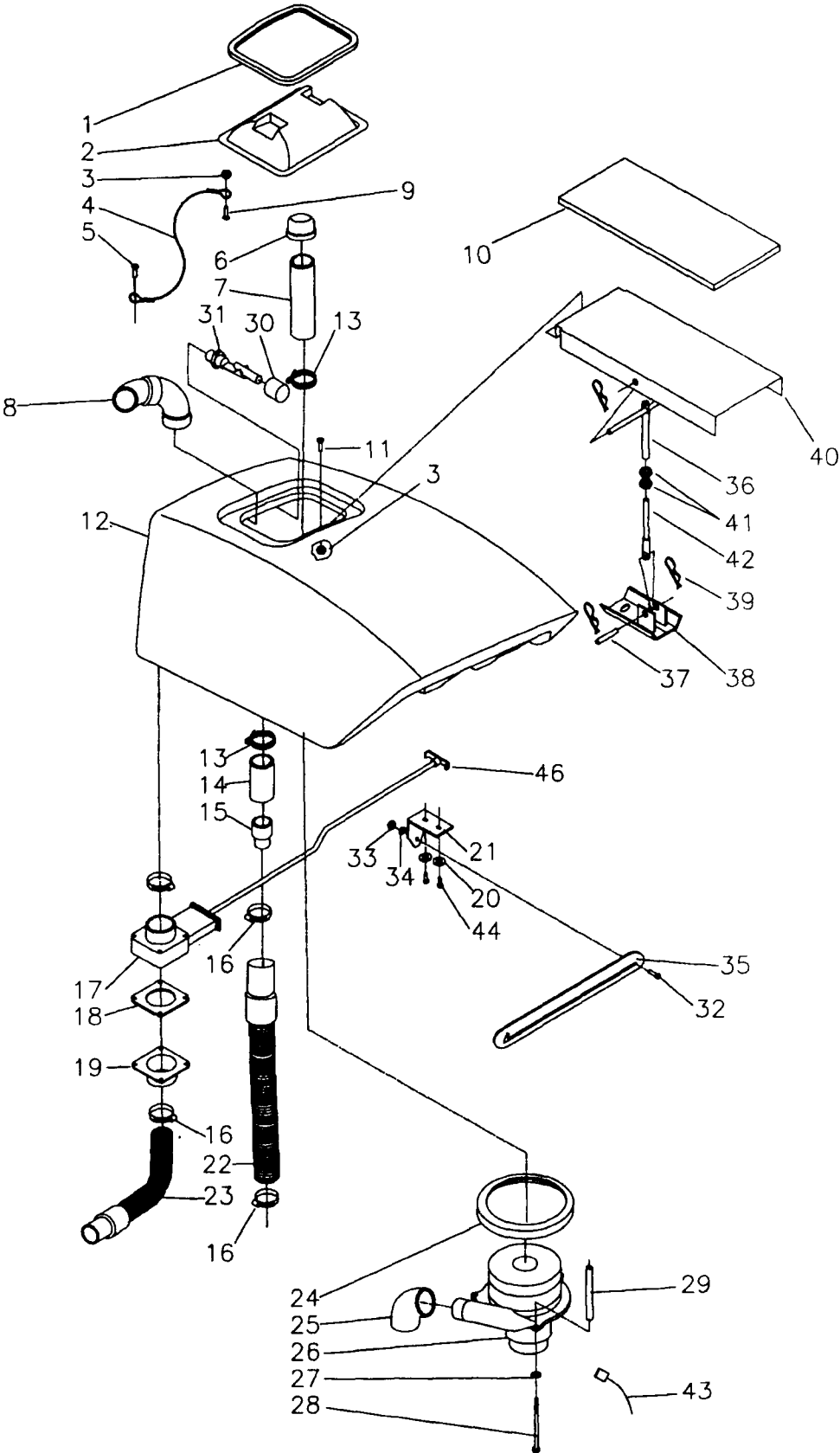
CONNECTOR P3

PIN 1	MAIN SOLENOID, NO.63
PIN 2	NOT USED
PIN 3	NOT USED

KA-27 SOLUTION TANK ASSEMBLY



KA-27 RECOVERY TANK ASSEMBLY



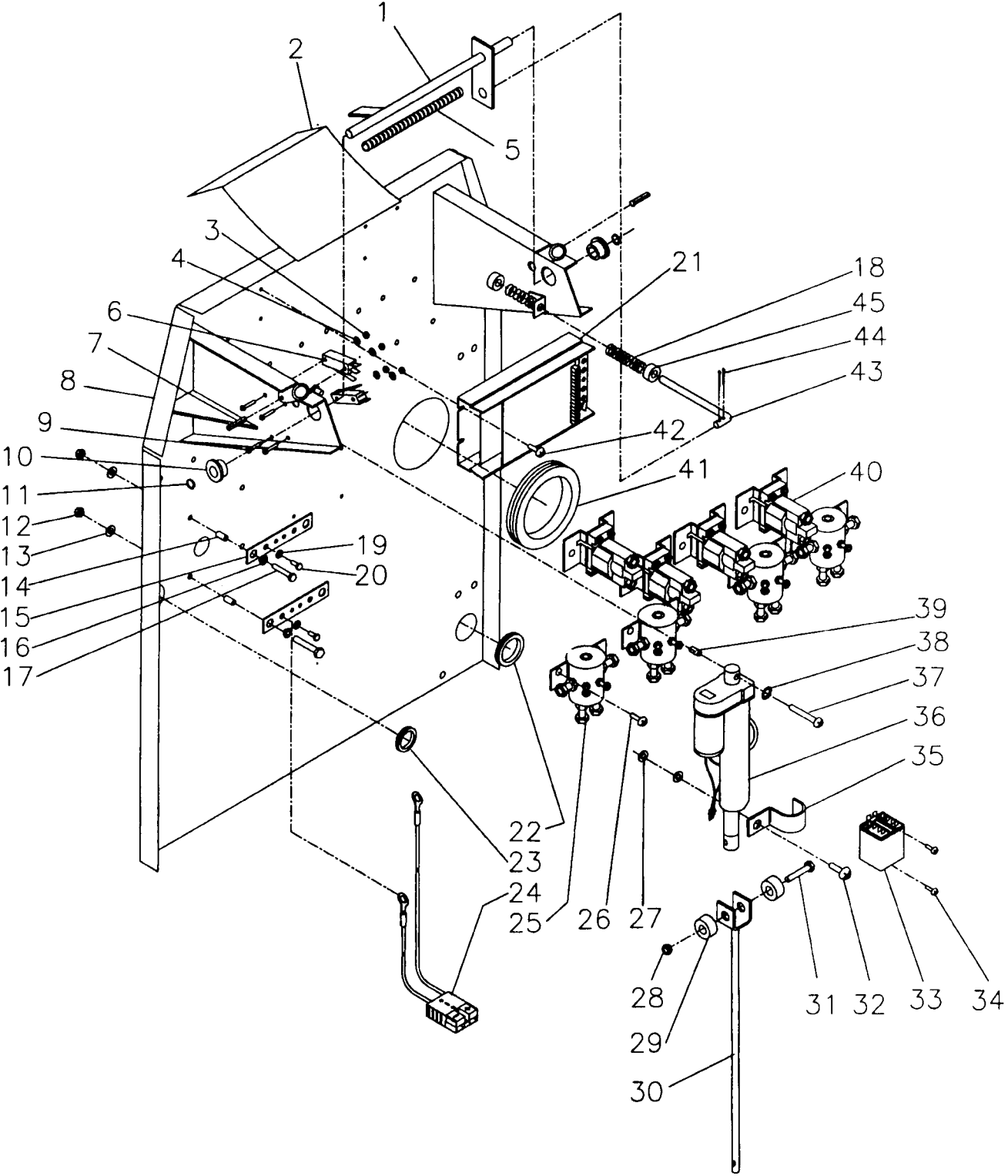
KA-27 RECOVERY TANK PARTS LIST

DET.	PART NO.	DESCRIPTION	QUANT.	DET.	PART NO.	DESCRIPTION	QUANT.
1	057962	GASKET,FOAM—EXTR.RECOVERY	1	23	035179	ASM,HOSE—DUMP,BLK,1.50 DIA	1
2	057579	LID,DOMED—DURASCRUB,CLEAR	1	24	E23788B	RING-MOTOR MOUNTING	1
3	005480	NUT,HEX LOCK— 10-24,NYLOC	1	25	056676	ELBOW,PIPE—RS 98402,CUT OFF	1
4	056617	WIRE ROPE—.062DIA X 6.00L	1	26	026056	ASM,VAC MTR—24V.3-STG,W/TERMS	1
5	002382	SCR TPG F PAN HD 10-B X.500L	1	27	004254	WSHR LK .267ID.510OD.028T EXT	3
6	056793	FILTER,SCREEN—1.85ID,SS	1	28	223213	SCR CAP HEX HD .250-20X4.00L	3
7	055494	PIPE,PVC—1.50 SCH40 X 6.00L	1	29	056764	SPACER,PHEN—.265X.500.3.156L	3
8	056758	ASM,ELBOW—RECOVERY TANK	1	30	057318	ADPTR,FLOAT—DURA SCRUB	1
9	002449	SCR MACH PAN HD 10-24X.875L,SS	1	31	057002	SWITCH,FLOAT W/WIRE	1
10	057029	GASKET,SUPPORT—27" AUTO	1	32	002433	SCR SHLDR SOC HD .250X.500L	1
11	002491	SCR MACH FLAT HD 10-24X1LSS	1	33	005433	NUT,HEX—.250-20,SS	1
12	057437	TANK,REC—MACH'D,27SS	1	34	005433	WSHR FLT .281ID.750OD.120T STL	1
13	049999	CLAMP,HOSE—2.25 MAX DIA,WORM	3	35	057508-02	BAR,STL—11GA.W/SLOT,PLATED	1
14	057106	TUBE,PVC—RS098403,4.500L	1	36	035326	WDMT,SUPPORT—AUTOS	1
15	053894	FITTING—REDUCER,1.58-1.50,PLS	1	37	057026	PIN,STL—3/8"OD,SS	1
16	046688	CLAMP,HOSE—1.75 MAX DIA,WORM	2	38	057025	PLATE,STL—16GA,SS	1
17	057421	VALVE,SLIDE—1-1/2PIPE,27" AUTO	1	39	004352	PIN,LOCK—.125 DIA WIRE	4
18	054762	GASKET,FOAM—.187X2.87X2.87	2	40	057033	PLATE,STL—REC TANK,SS	1
19	035160	WDMT,DRAIN—RECOVERY TANK	1	41	003438	NUT,HEX JAM—.375-16,SST	2
20	004253	WSHR LK .204ID.410OD.025T EXT	2	42	035327	WDMT,SUPPORT—REC TANK	1
21	057504-02	BRACKET,STL—11GA,PLATED	1	43	038786	BRUSH,MTR—24 AND 36V DC VAC	2
22	035129	ASM,HOSE—TANK,1.50 DIA,BLK	1	44	001273	SCR MACH RD HD 10-32X.500L	2
17	057421	valve w/ plastic handle		46	057187	Handle only, 1.1um.	

AVAILABLE ASSEMBLIES

035484 ASM, RECOVERY TANK--INCLUDES ITEMS 1-15, 17-21, 24-31, 36-43

KA-27 BACK PANEL ASSEMBLY

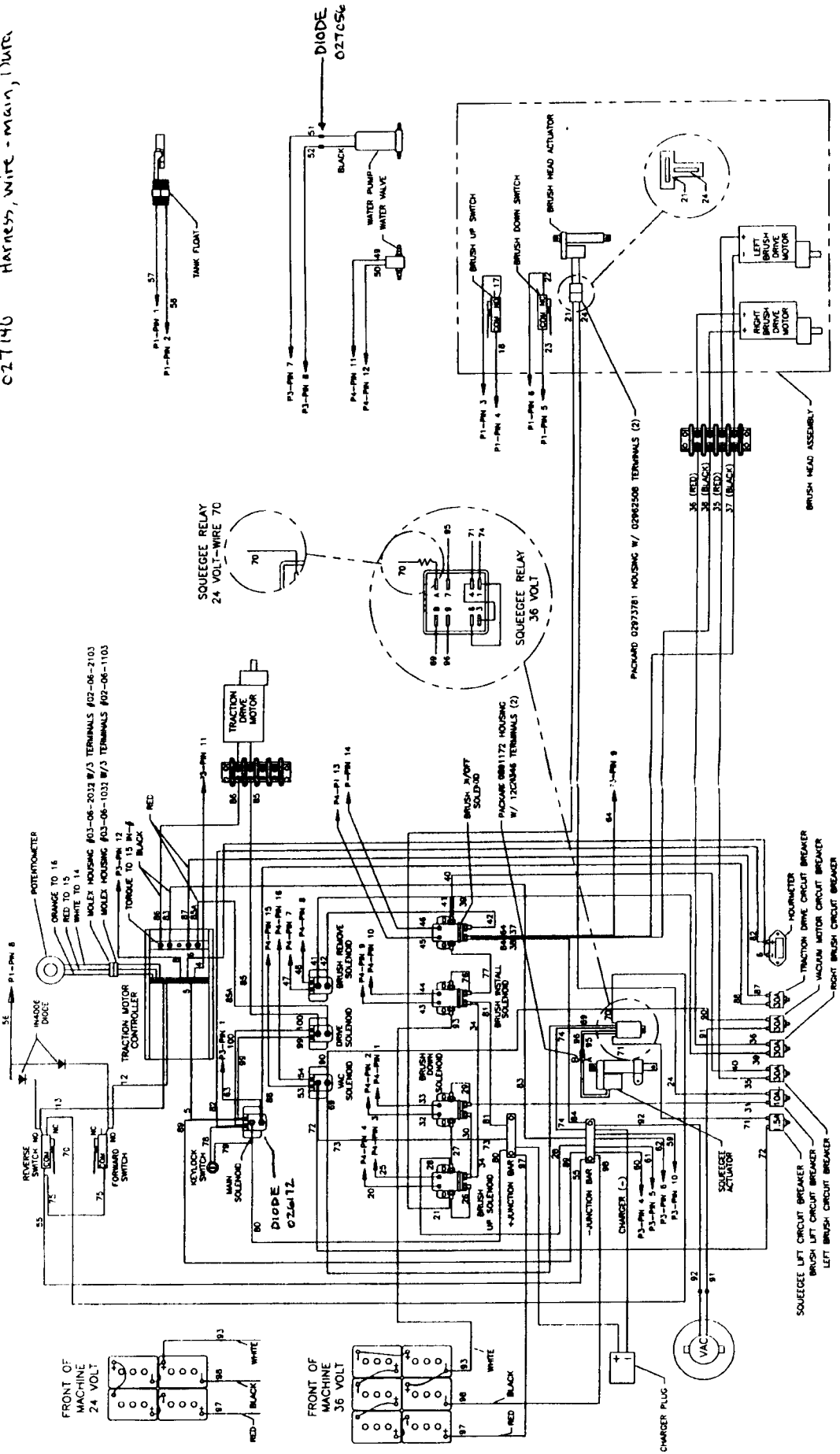


KA-27 BACK PANEL PARTS LIST

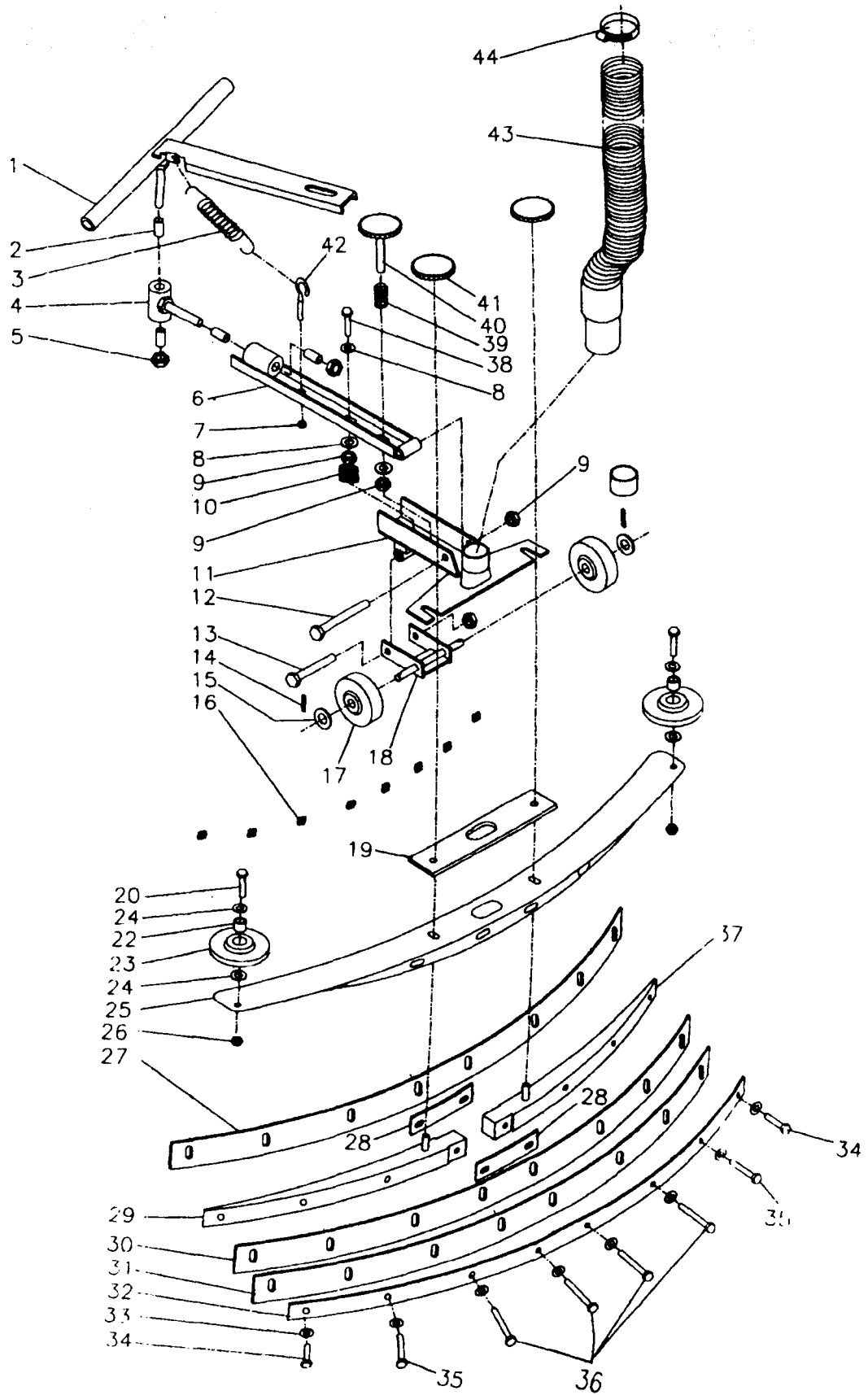
DET. PART NO.	DESCRIPTION	QUANT.	DET. PART NO.	DESCRIPTION	QUANT.		
1	035384	WDMT SHAFT—ACTUATOR	1	24	027152	ASM.CHARGER PLUG—2 CNDCT	1
2	027076	INSULATION BARRIER—SPLASH CVR	1	25	026645	SOLENOID—24V	4
3	003274	NUT,HEX—6-32,ZN PLT	4	26	001514	SCR TPG F PAN HD 210 20X 375L	16
4	004250	WSHR LK .148ID.250OD.031TSPLT	4	27	004336	WSHR FLT .281ID 875C D 125T STL	2
5	057176	TUBE,PLSTC—SLIT,.81ODX11.0"L	1	28	003363	NUT,HEX LOCK—250-10,ZN PLT	1
6	026603	SWITCH,LVR—DPST.20A.125-250V	2	29	050575	SPACER,PHEN—281X 875. 375L	2
7	005624	PIN,ROLL—312DIA.1.000"L	2	30	035183	WDMT.ACTUATOR—SQUEEGEE	1
8	035481	WDMT.BACK PANEL—KA-27SS	1	31	002282	SCR CAP HEX HD 250-20X2.50L	1
9	001248	SCR MACH RD HD 6-32X1.00L	4	32	002371	SCR TPG F PAN HD 110 24X.625L	1
10	027131	BRG.FLANGE—500ID.750OD.500W	2	33	027136	RELAY,DPDT—24VDC 10 AMPS	1
11	004351	RING,RTNG—EXT,.500 SHAFT,"E"	2	34	005313	SCR TPG F PAN HD 110 32X.312L	2
12	003283	NUT,HEX—250-20,ZN PLT	4	35	056623	STRAP,CONDUIT—1IN RIGID	1
13	002278	WSHR LK .262ID.489OD.062TSPLT	4	36	027155	ACTUATOR,DC—24V.75LBS.3IN	1
14	048268	SPACER,PLSTC—500X 625. 500L	4	37	002267	SCR CAP HEX HD 250 20X1.50L	1
15	048269	BAR,STL—187X.750X 4.00 LONG	2	38	004254	WSHR LK .267ID 510CD 028T EXT	1
16	004369	WSHR SHI.DR.250ID 562OD.120T.NY	4	39	049343	SPACER,STL—375X.500. 437L.Z	1
17	002269	SCR CAP HEX HD .250-20X1.25L	4	40	027165	SOLENOID 24V SPST NORM OPEN	4
18	056597	SPRING,COMP 480D 2.75L .045WD	2	41	054	GROM—3.00ID.3.50MFD.12PA	1
19	004212	WSHR LK .326ID.586OD 078TSPLT	4	42	005313	SCR TPG F PAN HD 110 24X 375L	4
20	003242	SCR CAP HEX HD 312-18X.500L	4	43	053296	ROD,STL—312 DIA .600 LONG	1
21	027166	CONTROL—DC,PROGRAMMABLE.27	1	44	004297	PIN,COTTER—094X 1.50 LONG	2
22	056672	GROM—2"IDX2.44MHDX.12PA	1	45	048987	COLLAR-CENTERING SPRING	2
23	055434	GROM—1 0ID.1.25MHD.125PA	1				

WIRE DIAGRAM

027140 Harness, wire - main, Data



KA-27 SQUEEGEE ASSEMBLY



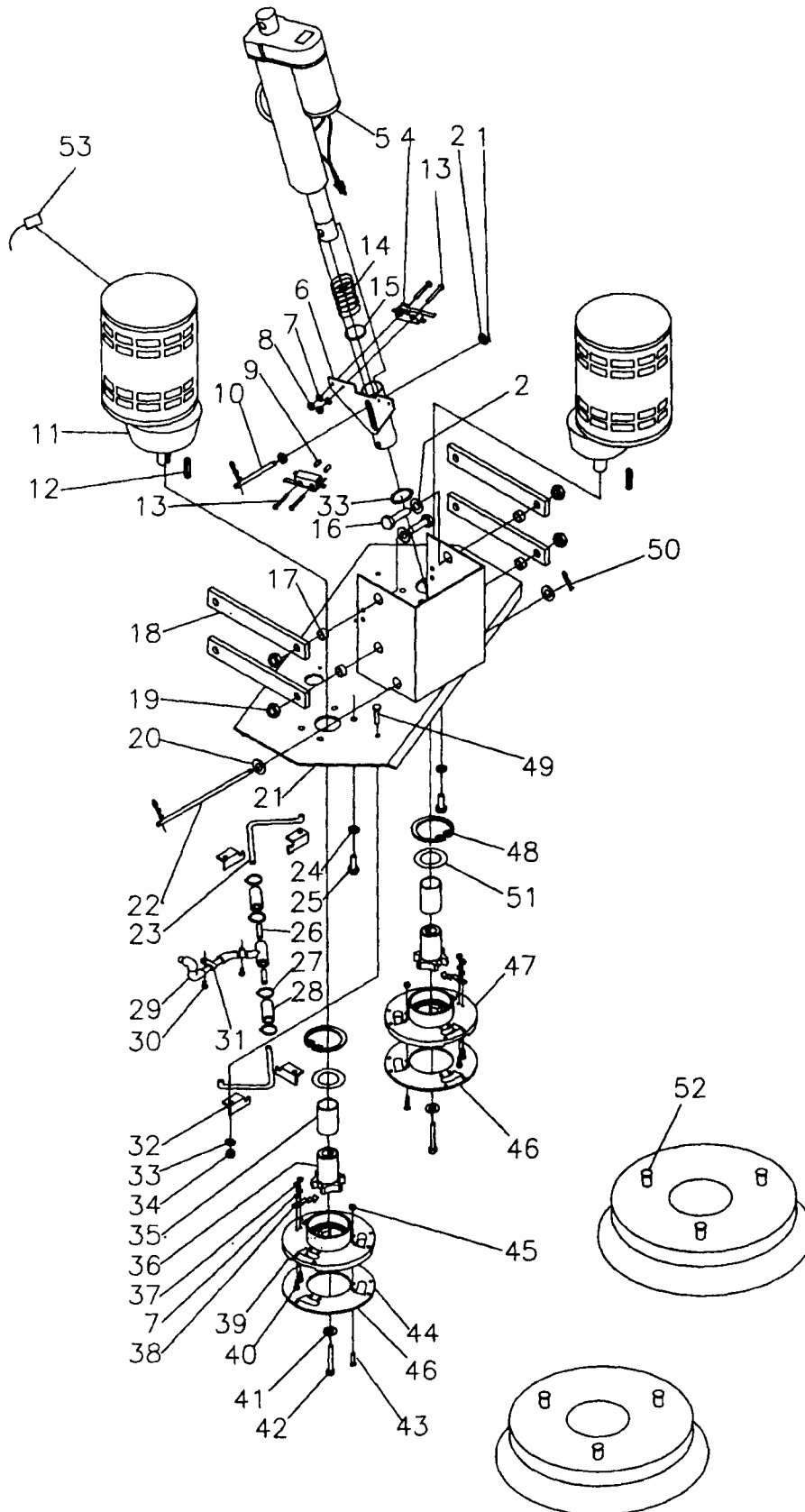
KA-27 SQUEEGEE PARTS LIST

DET. PART NO.	DESCRIPTION	QUANT.	DET. PART NO.	DESCRIPTION	QUANT.		
1	035310	WDMT,SQUEEGEE LIFT—27 AUTO	1	23	053720	WHEEL—4.00DIA.,438BORE.,688HB	2
2	027171	BRG.SLV—.500ID,.625OD,.750W	4	24	004218	WSHR FLT .344ID.750OD.060T STL	4
3	051136	SPRING,EXT .750D 2.92L .104WD	1	25	035118	WDMT,SQUEEGEE—27" AUTO	1
4	035150	WDMT,SQUEEGEE PIVOT—33&39AUTO	1	26	003378	NUT,HEX LOCK—.312-18,ZN PLT	2
5	003370	NUT,HEX LOCK—.500-13,ZN PLT	2	27	056425	RUBBER,SQUEEGEE—FRT,27" AUTO	1
6	035137	WDMT,SQUEEGEE BAR—33&39 AUTOS	1	28	056461	CLAMP,SQUEEGEE—11GA,5.00L	2
7	005479	NUT,HEX LOCK—.250-20,NYLOC,ZN	1	29	056285	SPACER,SQUEEGEE—LEFT,27" AUTO	1
8	005219	WSHR FLT .406ID1.00OD.071T STL	4	30	056427	RUBBER,SQUEEGEE—REAR,27 AUTO	1
9	003368	NUT,HEX LOCK—.375-16,ZN PLT	4	31	056426	RUBBER,SQUEEGEE—BACKUP	1
10	056808	SPRING,COMP—.970D,.750L,.072W	1	32	056671	STRAP,SQUEEGEE—27" AUTO	1
11	035138	WDMT,SQUEEGEE BRACKET—33&39	1	33	004531	WSHR FLT .281ID.625OD.080T,SS	8
12	002445	SCR CAP HEX HD .375-16-2.50L	1	34	002454	SCR CAP HEX HD .250-20X1.50L	2
13	003268	SCR CAP HEX HD .375-16X3.00L	1	35	002476	SCR CAP HEX HD .250-20X2.00L	2
14	005383	PIN,COTTER—.094X1.000 LONG	2	36	002455	SCR CAP HEX HD .250-20X2.50L	4
15	004223	WSHR FLT .406ID.625OD.036T STL	2	37	056435	SPACER,SQUEEGEE—RIGHT,27" AUT	1
16	005591	NUT,SELF RETAINING—.250-20	8	38	002332	SCR CAP HEX HD .375-16X1.75L	1
17	057143	WHEEL,PLASTIC—3"OD,3/8"BORE	2	39	056585	SPRING,COMP .845D 1.75L .085WD	1
18	035139	WDMT,BRACKET—SQUEEGEE WHEEL	1	40	035163	ASM,KNOB—ADJUSTMENT,.375-16	1
19	056466	GASKET,SQUEEGEE—.187X2,9.75L	1	41	047484	KNOB	2
20	003249	SCR CAP HEX HD .312-18X1.25L	2	42	005594	BOLT,EYE—.250-20,X1.0 SHANK	1
21	004212	WSHR LK .326ID.586OD.078TSPLT	2	43	035302	ASM,HOSE—SQUEEGEE,1.5DIA,BLK	1 - 18" Long
22	053699	SPACER,STL—.312X.437,.43L	2	44	046688	CLAMP,HOSE—1.75 MAX DIA,WORM	1

AVAILABLE ASSEMBLIES

- 035215 ASM, SQUEEGEE--INCLUDES ITEMS 16, 19-37
 035309 ASM, SQUEEGEE LINKAGE--INCLUDES ITEMS 1-18, 38-42
 035590 SET, SQUEEGEE BLADE--INCLUDES ITEMS 27, 30, 31

KA-27 BRUSH HEAD ASSEMBLY



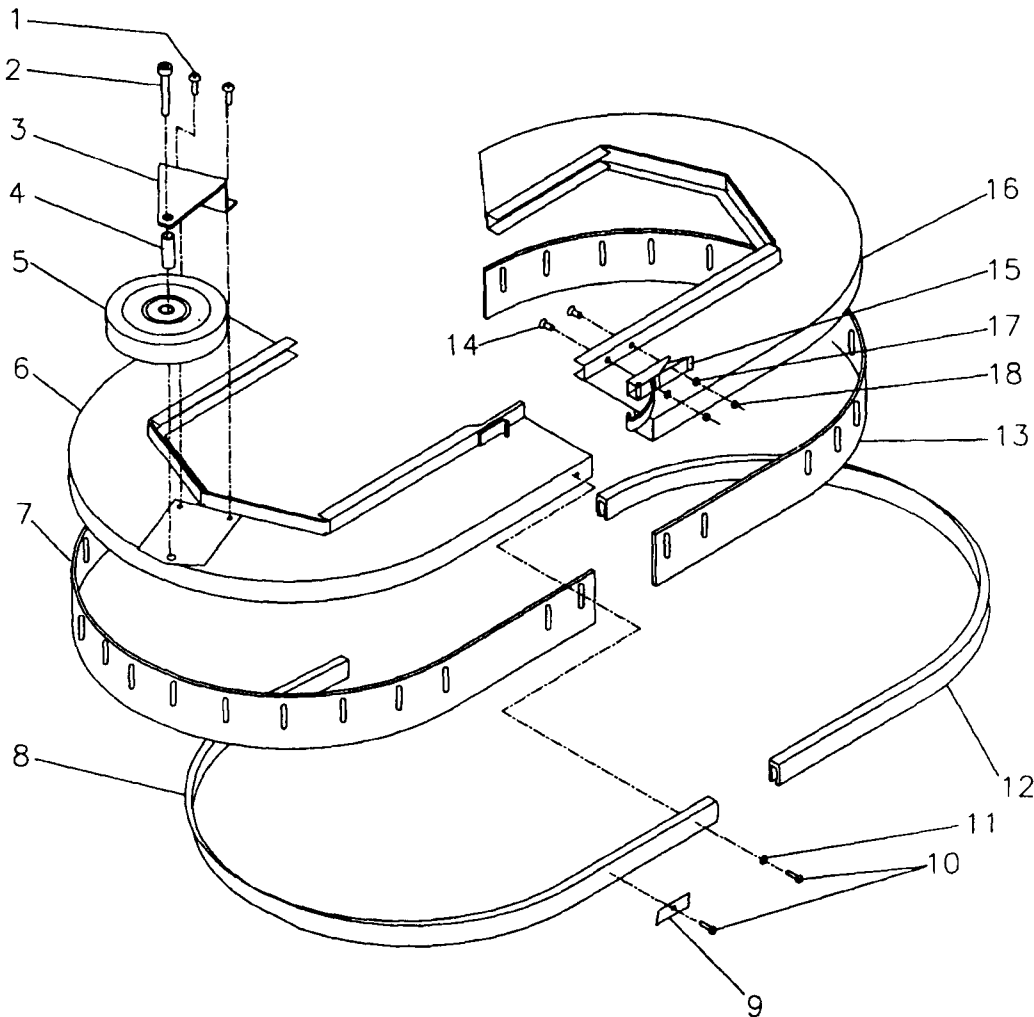
KA-27 BRUSH HEAD PARTS LIST

DET.	PART NO.	DESCRIPTION	QUANT.	DET.	PART NO.	DESCRIPTION	QUANT.
1	005200	PIN,COTTER—.125X1.000 LONG	2	28	048607	TUBE,VINYL—.500X.750, 1.50L	2
2	004238	WSHR FLT .531ID1.00OD.071T STL	4	29	035332	ASM,TUBE—PVC,SOLUTION,27"	1
3	005227	WSHR FLT .531ID.875OD.036T STL	2	30	005316	SCR TPG F PAN HD 10-24X.375L	2
4	026603	SWITCH,LVR—DPST,20A,125-250V	2				
5	027154	ACTUATOR,DC—24V,500LBS,6IN	1	31	051474	CLAMP,LOOP—.609 CLOSED I.D.	2
6	035421	WDMT,ACTUATOR TUBE—BRUSH LIFT	1	32	053277	BRACKET,SOLN TUBE—.75X.75X1.8	4
7	004250	WSHR LK .148ID.250OD.031TSPLT	4	33	046762	RING,RTNG—INT.1.18 CYL,N5000	1
8	003274	NUT,HEX— 6-32,ZN PLT	4	34	003363	NUT,HEX LOCK—.250-20,ZN PLT	4
9	046425	SPACER,PHEN—.250X.437, .250L	2	35	056464	TUBE,SS—1.50OD,16GA,1.937L	2
10	056155	PIN—ACTUATOR	1	36	056445	SHAFT,DRIVE—BRUSH,AUTOS	2
11	039623	Shaft & Gear	2	37	003466	NUT,HEX— 6-32,SS	4
11	024439	ASM,MTR&GEAR UNIT—24V,W/RINGS	2	38	057046	CLIP,RETAINING—BRUSH LUG,27	2
12	057663	KEY,SQUARE—.250SQ,1.50L	2	39	056446	HUB,DRIVE—BRUSH,AUTOS,LEFT	1
13	005261	SCR MACH RD HD 6-32X1.25L	4	40	001515	SCR MACH PAN HD 6-32X 500L	4
14	054427	SPRING,COMP—1.09D 2.50L.135WD	1				
15	056639	PLATE,STL—13GA,1.125DIA	1	41	005358	WSHR LK—.326ID.586OD.078T SPL	2
16	003270	SCR CAP HEX HD .500-13X1.25L	4	42	002499	SCR CAP SOC HD 312-18X2.00L	2
17	056473	SPACER,STL—.531X.750C .218L,Z	4	43	002473	SCR MACH FLAT HD 10-24X.875L	12
18	056254	BAR,STL—.375X1.25, 9.25L	4	44	057159	PLATE,SS—BRUSH MTG RING,RIGHT	3
19	003370	NUT,HEX LOCK—.500-13,ZN PLT	4	45	222224	NUT,HEX LOCK— 10-24,ZN PLT	12
20	005219	WSHR FLT .406ID1.00OD.071T STL	2	46	057160	PLATE,SS—BRUSH MTG RING,LEFT	1
				47	056447	HUB,DRIVE—BRUSH,AUTOS,RIGHT	1
21	035313	WDMT,BRUSH HEAD—27 AUTO	1	48	004529	RING,RTNG—INT.2 375 BORE	2
22	056987	SHAFT,STL—.375DIA, 5.75L	1	49	002459	SCR CAP HEX HD .250-20X.500LSS	4
23	055297	TUBE,FORMED—AUTO,SOLN,RIGHT	2	50	004352	PIN,LOCK—.125 DIA WIRE	2
24	004214	WSHR LK .390ID.683OD.094TSPLT	8				
25	003262	SCR CAP HEX HD .375-16X1.00L	8	51	004548	WSHR FLT 1.770ID2.342OD.078T	2
26	056986	TUBE,VINYL—.313X.500, 1.00L	2	52	005630	LUG,BRUSH—.250-20 THREAD	6
27	051117	CLAMP,HOSE—.875 MAX DIA,WORM	4	53	039276	BRUSH,MTR—FOR 024372&027153	4

AVAILABLE ASSEMBLIES

- 035491 ASM, BRUSH HEAD--INCLUDES ITEMS 1-51, 53
- 035315 ASM, SOLUTION LINE--INCLUDES ITEMS 23, 26-29
- 035366 ASM, DRIVE HUB, RIGHT--INCLUDES ITEMS 7, 35-45, 48, 51
- 035367 ASM, DRIVE HUB, LEFT--INCLUDES ITEMS 7, 35-38, 40-43, 45-48, 51

KA-27 BRUSH COVER ASSEMBLY



TM-1462

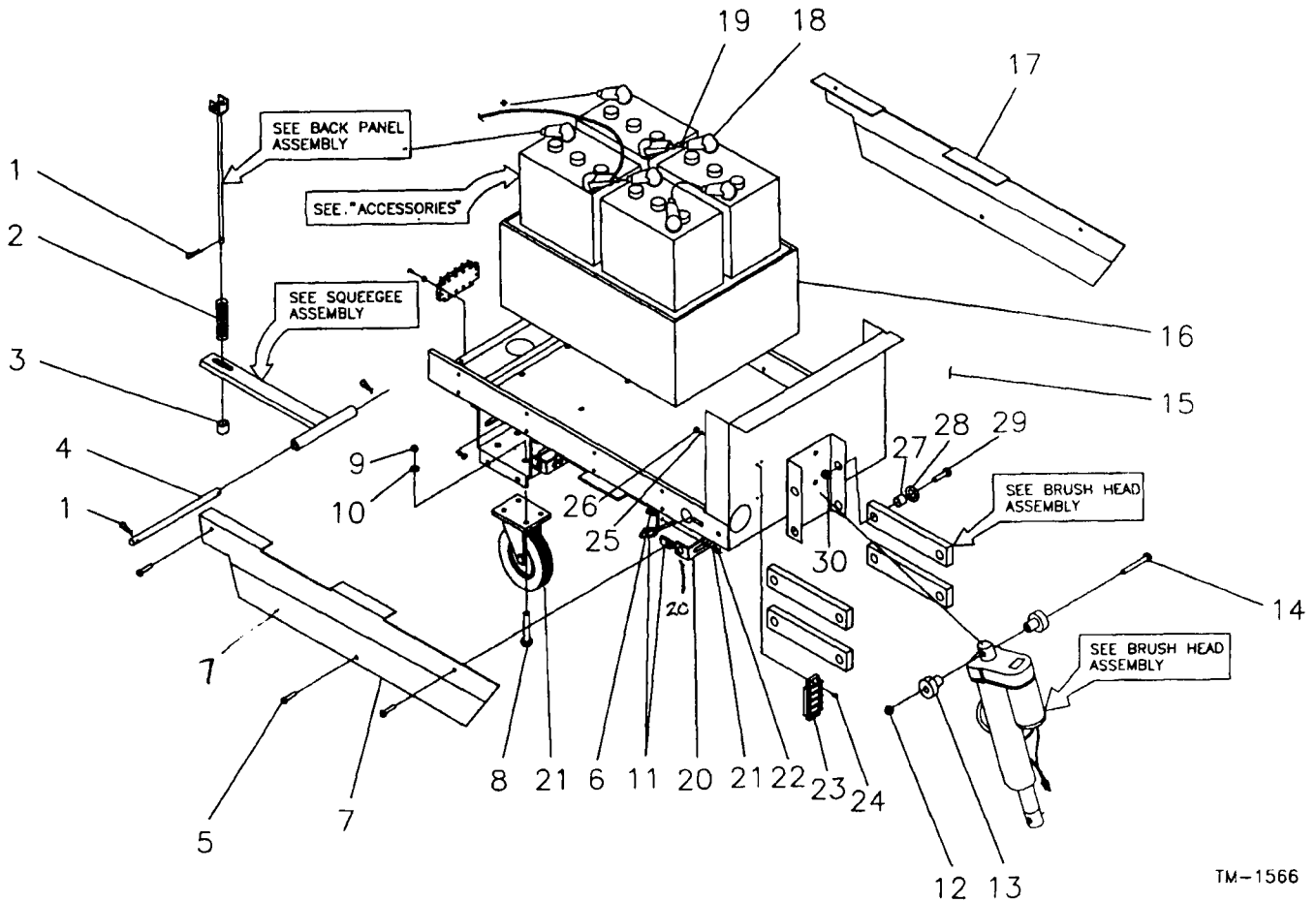
DET. PART NO.	DESCRIPTION	QUANT.	DET. PART NO.	DESCRIPTION	QUANT.		
1	002357	SCR MACH PAN HD .250-20X.625L	2	10	004542	SCR TPG F PAN HD 10-24X.875L	22
2	005536	SCR CAP SOC HD .375-16X2.00L	1	11	005323	WSHR FLT .203ID.500OD.036T STL	4
3	056701	BRACKET,BUMPER WHEEL-27 AUTO	1	12	056939	CHANNEL,VINYL-BRUSH CVR,27,LT	1
4	056684	SPACER,STL-.500X17GA,1.50L,Z	1	13	056937	GUARD,SPLASH-27 AUTO,LEFT	1
5	056673	WHEEL,BLACK-5" OD	1	14	001288	SCR MACH FLAT HD 10-24X.500L	2
6	035281	WDMT,BRUSH COVER-27 AUTO,RT	1	15	054306	CLAMP,TOGGLE-BLACK,1.62 LATCH	1
7	056936	GUARD,SPLASH-27 AUTO,RIGHT	1	16	035282	WDMT,BRUSH COVER-27 AUTO,LEFT	1
8	056938	CHANNEL,VINYL-BRUSH CVR,27,RT	1	17	003279	NUT,HEX- 10-24,ZN PLT	2
9	052006	STR,STL-.062X.437X1.50 LONG	18	18	005297	WSHR LK .200ID.334OD.047TSPLT	2

AVAILABLE ASSEMBLIES

- 035283 ASM, BRUSH COVER, RIGHT--INCLUDES ITEMS 1-11
- 035284 ASM, BRUSH COVER, LEFT--INCLUDES ITEMS 9-18

TM-1466

KA-27 FRAME ASSEMBLY AND PARTS LIST

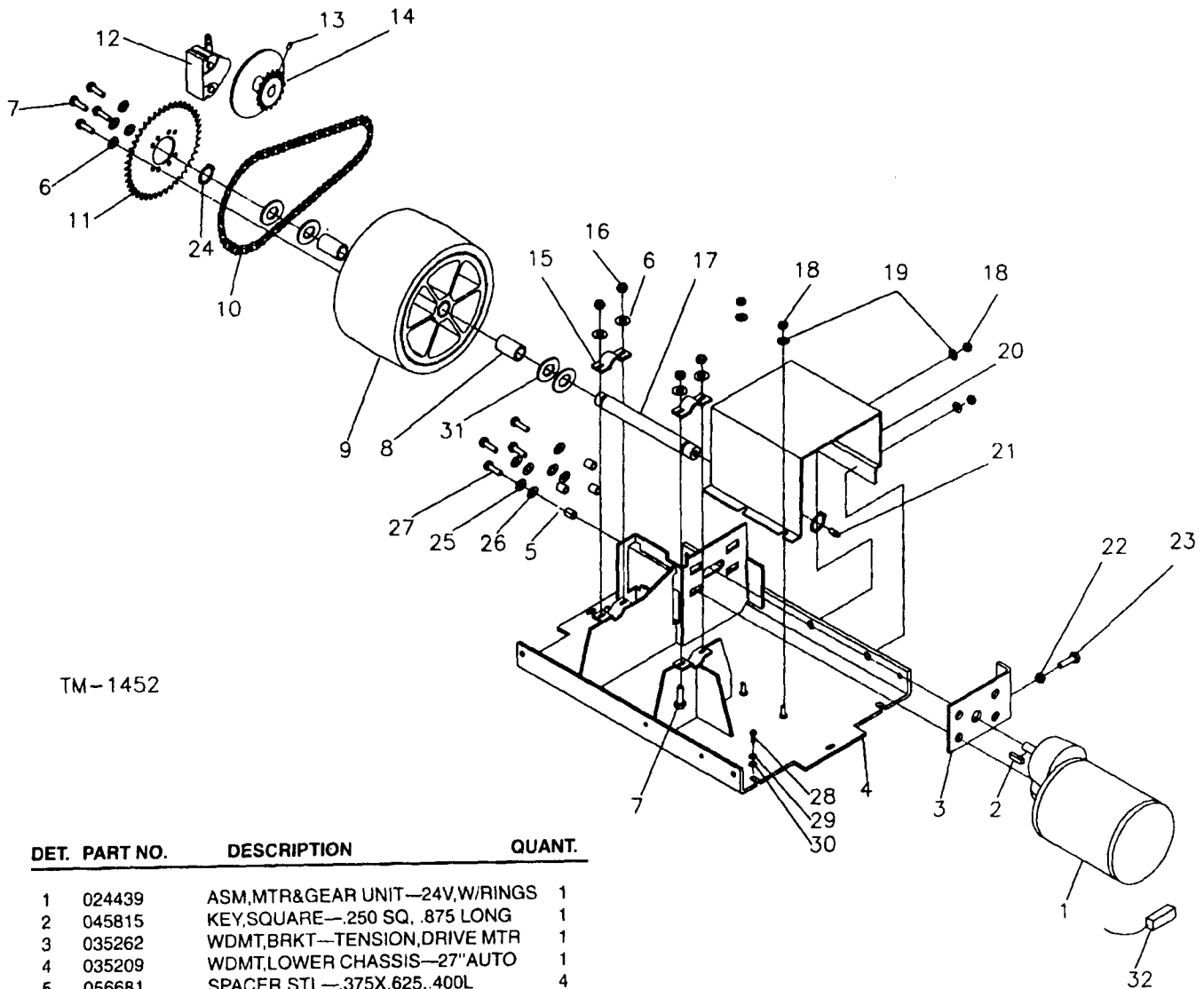


TM-1566

DET. PART NO.	DESCRIPTION	QUANT.	DET. PART NO.	DESCRIPTION	QUANT.		
1	004352	PIN, LOCK—.125 DIA WIRE	3	16	056727	BOX, BATT—MACH. 27 AUTO	1
2	056618	SPRING, COMP—.845D, 3.50L, 100WD	1	17	056717	SKIRT, LOWER—27 AUTO, LEFT	1
3	056683	SPACER, STL—.391X.625, .500L, Z	1	18	054186	BOOT, INSULATOR—BATT TERMINALS	8
4	056977	SHAFT, STL—.375 DIA, 11.00L	1	19	025085	ASM, WIRE— 6GA, BLK, 10.2L, RINGS	3
5	002480	SCR MACH PAN HD .250-20X.625L	6	20	056715	BRACKET, STL—SKIRTS, 27 AUTO	4
6	004254	WSHR LK .267ID.510OD.028T EXT	6	20	CC2253	SCREWS	
7	056716	SKIRT, LOWER—27 AUTO, RIGHT	1	21	055658	CASTER, SWIVEL—5.0 DIA, 700 LB	2
8	003262	SCR CAP HEX HD .375-16X1.00L	8	22	003283	NUT, HEX—.250-20, ZN PLT	4
9	003293	NUT, HEX—.375-16, ZN PLT	8	23	026111	TERMINAL BLOCK—4 GERM, 50 AMP	2
10	004214	WSHR LK .390ID.683OD.094TSPLT	8	24	003279	NUT, HEX— 10-24, ZN PLT	8
7	057422	Label: ID KA27		25	004253	WSHR LK .204ID.410OD.025T EXT	8
11	003429	NUT, SPEED, U—.250-20, .58X1.125	4	26	005457	SCR MACH PAN HD 10-24X1.00L	8
12	005279	NUT, HEX LOCK—.375-16, NYLOC	1	27	056473	SPACER, STL—.531X.750C .218L, Z	4
13	054502	BSHG, SLV—.377ID.498OB1.00FLNG	2	28	004238	WSHR FLT .531ID1.00OD.071T STL	4
14	003267	SCR CAP HEX HD .375-16X2.75L	1	29	003270	SCR CAP HEX HD .500-13X1.25L	4
15	035277	WDMT—UPPER CHASSIS, 27"	1	30	003370	NUT, HEX LOCK— 500-13, ZN PLT	4
				31	039563	KIT, WHEEL&AXLE—FOR 055658	2
				19	025252	Red Batt *	
				19	025945	Black Batt *	

TM-1566

KA-27 CHASSIS ASSEMBLY AND PARTS LIST



TM-1452

DET. PART NO.	DESCRIPTION	QUANT.
1	024439 ASM,MTR&GEAR UNIT—24V,W/RINGS	1
2	045815 KEY,SQUARE—.250 SQ, .875 LONG	1
3	035262 WDMT,BRKT—TENSION,DRIVE MTR	1
4	035209 WDMT,LOWER CHASSIS—27" AUTO	1
5	056681 SPACER,STL—.375X.625,.400L	4
6	004212 WSHR LK .326ID.586OD.078TSPLT	8
7	003244 SCR CAP HEX HD .312-18X.750L	8
8	027130 BEARING,SLEEVE—1"ID,1.25"OD	2
9	035097 ASM,WHEEL—10"OD,AUTO'S	1
10	056448 CHAIN,ROLLER—#40,70LK&CONN	1
10	049781 Master link	
11	051376 SPROCKET,CHAIN—#40,.500P,44T	1
12	056245 BRAKE,MECHANICAL—CALIPER	1
13	002234 SCR SET CUP PT .250-20X.500L	1
14	035141 WDMT,SPROCKET—DURASCRUB	1
15	056327 CLAMP,AXLE—BLACK	2
16	003349 NUT,HEX—.312-18,ZN PLT	4
17	056258 AXLE—1.00 DIA X 9-5/16"L	1
18	003283 NUT,HEX—.250-20,ZN PLT	4
19	002278 WSHR LK .262ID.489OD.062TSPLT	4
20	056405 COVER,MOTOR—AUTOMATICS	1

9 056242-1 Polywheel
AVAILABLE ASSEMBLIES

DET. PART NO.	DESCRIPTION	QUANT.
21	054330 ZERK,GREASE—.250-28 THREAD	1
22	003294 NUT,HEX JAM—.375-16,ZN PLT	1
23	002332 SCR CAP HEX HD .375-16X1.75L	1
24	048537 RING,RTNG—EXT.984 SHAFT,5160	2
25	004214 WSHR LK .390ID.683OD.094TSPLT	4
26	004384 WSHR FLT .406ID.875OD.064T STL	4
27	003264 SCR CAP HEX HD .375-16X1.25L	4
28	003259 SCR CAP HEX HD .375-16X.625L	4
29	004215 WSHR LK .398ID.694OD.040T EXT	4
30	005320 WSHR FLT .406ID.750OD.060T STL	4
31	004330 WSHR FLT 1.05ID1.50OD.036T STL	4
32	039276 BRUSH,MTR—FOR 024372&027153	4

035208 ASM, LOWER CHASSIS--INCLUDES ITEMS 1-31

TM-1565