



## Electronic Service Manuals

This electronic document is provided as a service to our customers. We do not create the contents of the information contained in this document. Should you have detailed questions pertaining to the information contained in this document, you may contact Michco, or the manufacturer which provided the original information in this electronic deliverable. Michco's only part in this electronic deliverable was the electronic assembly process. By providing this manual on line we are not guaranteeing parts availability.

You may contact Michco through the following methods:

Phone (517) 484-9312 or (800) 331-3339

2011 N. High St. -- Lansing, Michigan -- 48906

Fax: (517) 484-9836

Email: [CustServe@Michco.com](mailto:CustServe@Michco.com)

Web site: [www.Michco.Com](http://www.Michco.Com)

Parts Web site: [www.FloorMachineParts.Com](http://www.FloorMachineParts.Com)

Order Parts on Line at:

**[www.FloorMachineParts.Com](http://www.FloorMachineParts.Com)**

Directly to Parts & Service:

By Email: **[Shop@Michco.com](mailto:Shop@Michco.com)**

By Fax: (517) 702-2041

By Voice: Use numbers above.

**Serving the Cleaning Industry Since 1922**

Notice: All copyrighted material remains property of original owners, all trademarks are property of respective owners. Manuals are subject to Manufacturer's reproduction limitations. Originals or reproductions were provided by manufacturers through a request. We make no warranty as to the correctness of information provided in this document and you assume all risk. By placing these manuals on line we are not declaring our corporation to be an manufacturer authorized dealer or provider, please check our web site for authorized manufacturers we represent.

# *CaddyClean*<sup>®</sup>

Patented



**Spareparts**

---

**Reservdelar**

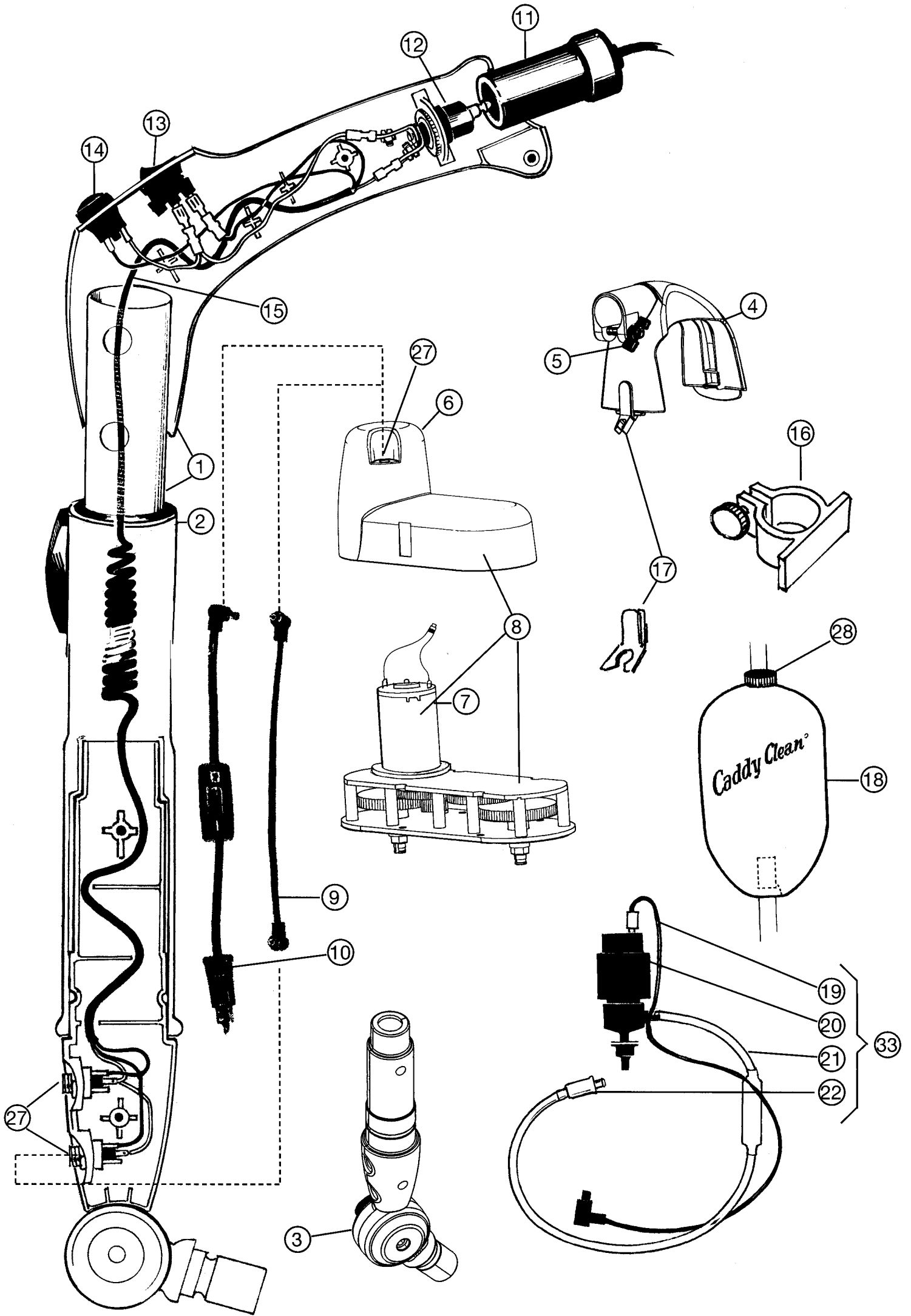
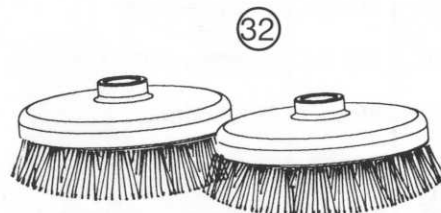
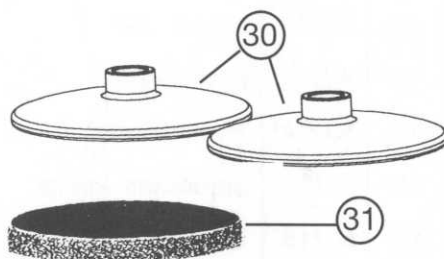
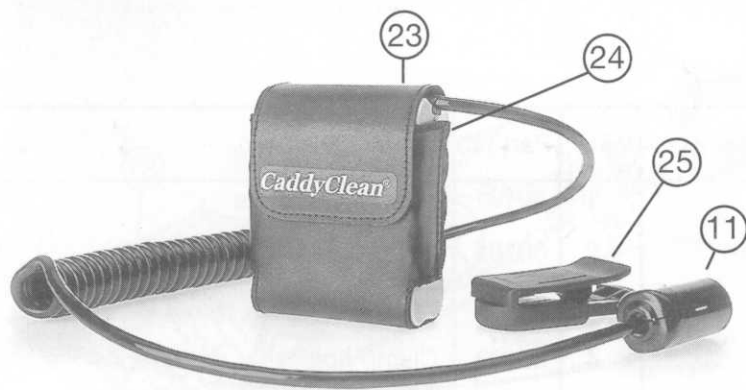


Bild	Nr.	Beskrivning	Ref.	Part nr.	Description
1	50101	Handtag komplett	1	50101	Handle complete
2	50102	Ställbart rör	2	50102	Adjustable handle
3	50103	Led komplett	3	50103	Joint, complete
4	50104	Hållare för motorenhet	4	50104	Clamp holder for motor unit
5	50105	Vingskruv	5	50105	Wing screw
6	50106	Motorkåpa	6	50106	Motor cover
7	50107	Elmotor 12v	7	50107	Electric motor, 12V
8	50108	Växel komplett	8	50108	Gear complete
9	50109	Kabel, led - motorenhet	9	50109	Cable, joint - motor unit
10	50110	Kabel för handhållen motorenhet	10	50110	Cable for hand held motor unit
11	50111	Honkontakt	11	50111	Female contact
12	50112	Hankontakt	12	50112	Male contact
13	50113	Strömbrytare	13	50113	Electric switch
14	50114	Tryckkontakt	14	50114	Push on/off switch
15	50115	Spiralkabel kompl.	15	50115	Spiral cable, complete
16	50116	Tankhållare	16	50116	Tank holder
17	50117	Munstyckshållare	17	50117	Nozzel holder
18	50118	Tank	18	50118	Tank
19	50119	Pumpmotorkabel	19	50119	Pump motor cable
20	50120	Pumpmotor	20	50120	Pump motor
21	50121	Slang	21	50121	Hose
22	50122	Munstycke	22	50122	Nozzle
23	50123	Batteripack NiMH batteri	23	50123	Battery pack (NiMH)
24	50124	Batteriväska NiMH batteri	24	50124	Battery case (NiMH)
25	50125	Batterihållare	25	50125	Battery holder
26	50126	Laddare/NiMH batteri	26	50126	Charger/NiMH battery
27	50127	Honkontakt	27	50127	Female contact
28	50128	Tanklock	28	50128	Cap
29	50129	Axelrems- midjeväska	29	50129	Shoulder strap/ waist strap bag
30		Rondellhållare	30		Pad holder
31		Rondeller	31		Pads
32		Skurborstar	32		Brushes
33	50133	Pump komplett	33	50133	Pump complete



**CaddyClean**<sup>®</sup>  
Patented

MADE IN SWEDEN  
[www.caddyclean.com](http://www.caddyclean.com)

**EUROCLEAN SPARE PARTS  
FOR CADDY CLEAN**

Item No.	Part No.	Description
1	1450101000	Handle
2	1450102000	Adjustable Handle
3	1450103000	Joint Complete
4	1450104000	Clamp Holder, Mfr
5	1450105000	Wing Nut
6	1450106000	Motor Cover
7	1450107000	Electric Motor 12V
8	1450108000	Gear Assembly
9	1450109000	Cable, Joint-Motor
10	1450110000	Cable, on/off switch
11	1450111000	Female Contact
12	1450112000	Male Contact
13	1450113000	On/Off Switch
14	1450114000	Pump Button
15	1450115000	Inner Spiral Cable
16	1450116000	Tank Holder
17	1450117000	Nozzel Holder
18	1450118000	Tank
19	1450119000	Pump Motor Cable
20	1450120000	Pump Motor
21	1450121000	Hose
22	1450122000	Nozzle
27	1450127000	Female Contact
28	1450128000	Cap
33	1450133000	Pump Complete
		<b>Accessories</b>
	1450504000	Tank Complete
	1450506000	Battery W/Case
	1450507000	Brush .4mm Standard
	1450508000	Brush .6mm
	1450509000	Grit Brush .60mm
	1450510000	Grit Brush .75mm
	1455101000	Grit Brush .80mm
	1450511000	Cable, Hand Held
	1450513000	Pad Holder
	1450515000	Waist Strap Bag
	1450519000	Battery Charger
	1453004000	Floor Pad, Green
	1453204000	Floor Pad, Black
	1453304000	Floor Pad, White
	1453404000	Floor Pad, Red
	1453504000	Floor Pad, Blue
	1453604000	Floor Pad, Brown
	1452904000	Floor Pad, Hi Pro