



# Electronic Service Manuals

This electronic document is provided as a service to our customers. We do not create the contents of the information contained in this document. Should you have detailed questions pertaining to the information contained in this document, you may contact Michco, or the manufacturer which provided the original information in this electronic deliverable. Michco's only part in this electronic deliverable was the electronic assembly process.

You may contact Michco through the following methods:  
Phone (517) 484-9312 or (800) 331-3339 MI, OH, IN only  
2011 N. High St. -- Lansing, Michigan -- 48906  
Fax: (517) 484-9836  
Email: [CustServ@Michco.com](mailto:CustServ@Michco.com)  
Web site: [www.Michco.Com](http://www.Michco.Com)  
Parts Web site: [www.FloorMachineParts.Com](http://www.FloorMachineParts.Com)

Order Parts on Line at:  
**[www.FloorMachineParts.Com](http://www.FloorMachineParts.Com)**

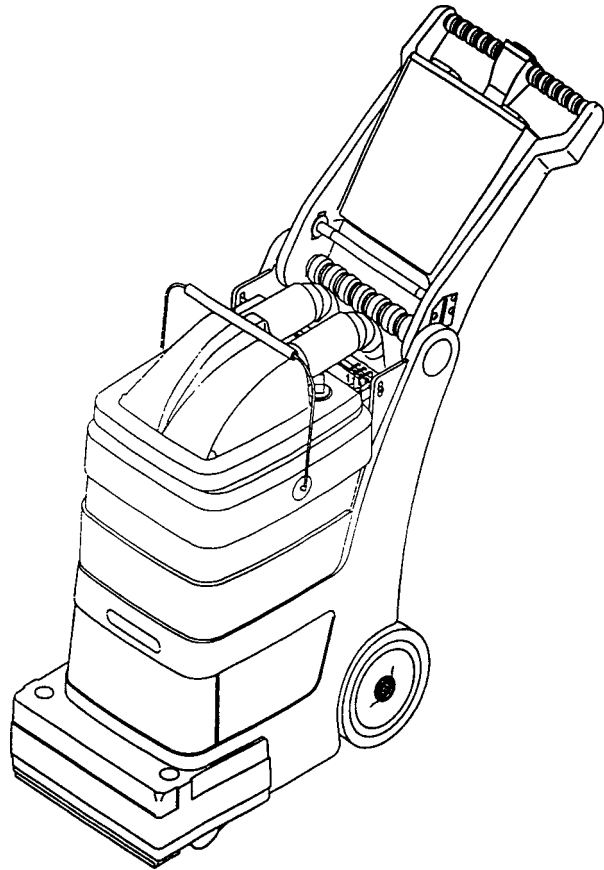
Directly to Parts & Service:  
By Email: **[Shop@Michco.com](mailto:Shop@Michco.com)**  
By Fax: (517) 702-2041  
By Voice: Use numbers above.

**Serving the Cleaning Industry Since 1922**

Notice: All copyrighted material remains property of original owners, all trademarks are property of respective owners. Manuals are subject to Manufacturer's reproduction limitations. Originals or reproductions were provided by manufacturers through a request. We make no warranty as to the correctness of information provided in this document and you assume all risk.

# EC 12

---



## **PARTS LIST**

**Euroclean MODEL 56649015**

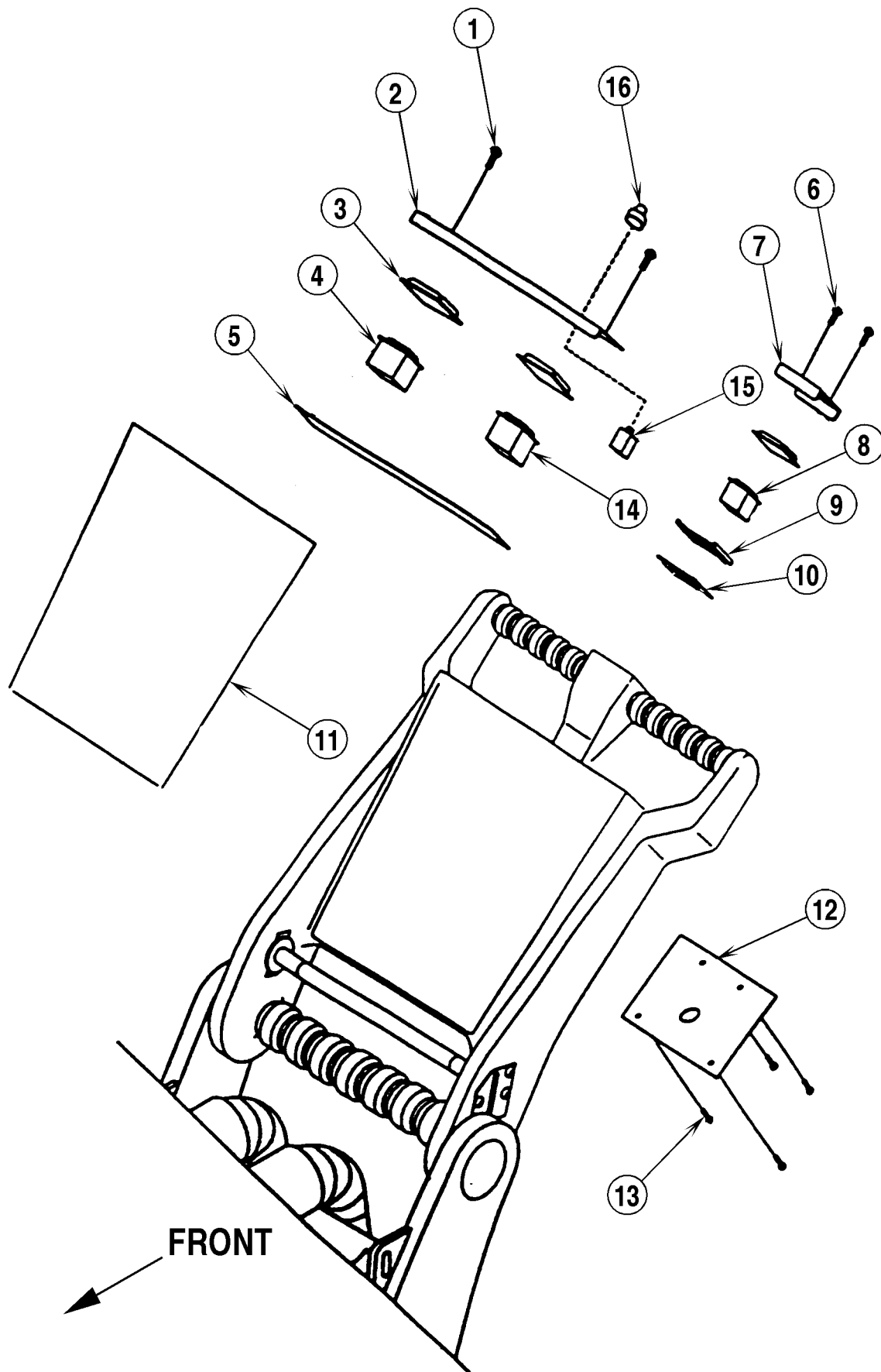


<b>DESCRIPTION</b>	<b>PAGE</b>
SWITCH HOUSING .....	2-3
HANDLE ASSEMBLY .....	4-5
TANK ASSEMBLY .....	6-7
LID ASSEMBLY .....	8-9
BRUSH ROLL ASSEMBLY .....	10-11
MOTORS .....	12-13
EXTERIOR PARTS .....	14-15
WIRING DIAGRAM .....	16
RECOMMENDED SPARE PARTS .....	17

#### **WHEN ORDERING PARTS**

- \* Use the 9 digit numbers from the "Ref. No." columns in this parts list.
- \* Specify the model and serial number of the machine.
- \* Use the space below to record the model and serial number for future reference.

Model \_\_\_\_\_ Serial No. \_\_\_\_\_



01-2	<b>SWITCH HOUSING</b>		
02-8	<b>EC 12</b>		<b>3</b>

Item	Ref. No.	Qty	Description
1	56628917	2	Screw, Mach—8/32 X 3/8l
2	56628941	1	Plate,Switch Mounting
3	1410751010	3	Cover, Rocker Switch
4	56628942	1	Switch,Rocker—Dpdt Black
5	56628943	1	Gasket,Switchplate
6	56628944	2	Screw,6-32 X 5/8 Phil. Hd.
7	56628945	1	Plate,Mom. Switch Mounting
8	1410866010	1	Switch,Push Button
9	56628946	1	Plate,Mom. Switch
10	56628947	1	Gasket,Mom. Switch
11	56628948	1	Label,Instruction
12	56628949	1	Plate,Cover
13	56628917	4	Screw, Mach—8/32 X 3/8l
14	1410749010	1	Switch, Rocker—115/230, 20a
15	56628950	1	Circuit Breaker—1.2 A
16	56628951	1	Seal,Circuit Breaker

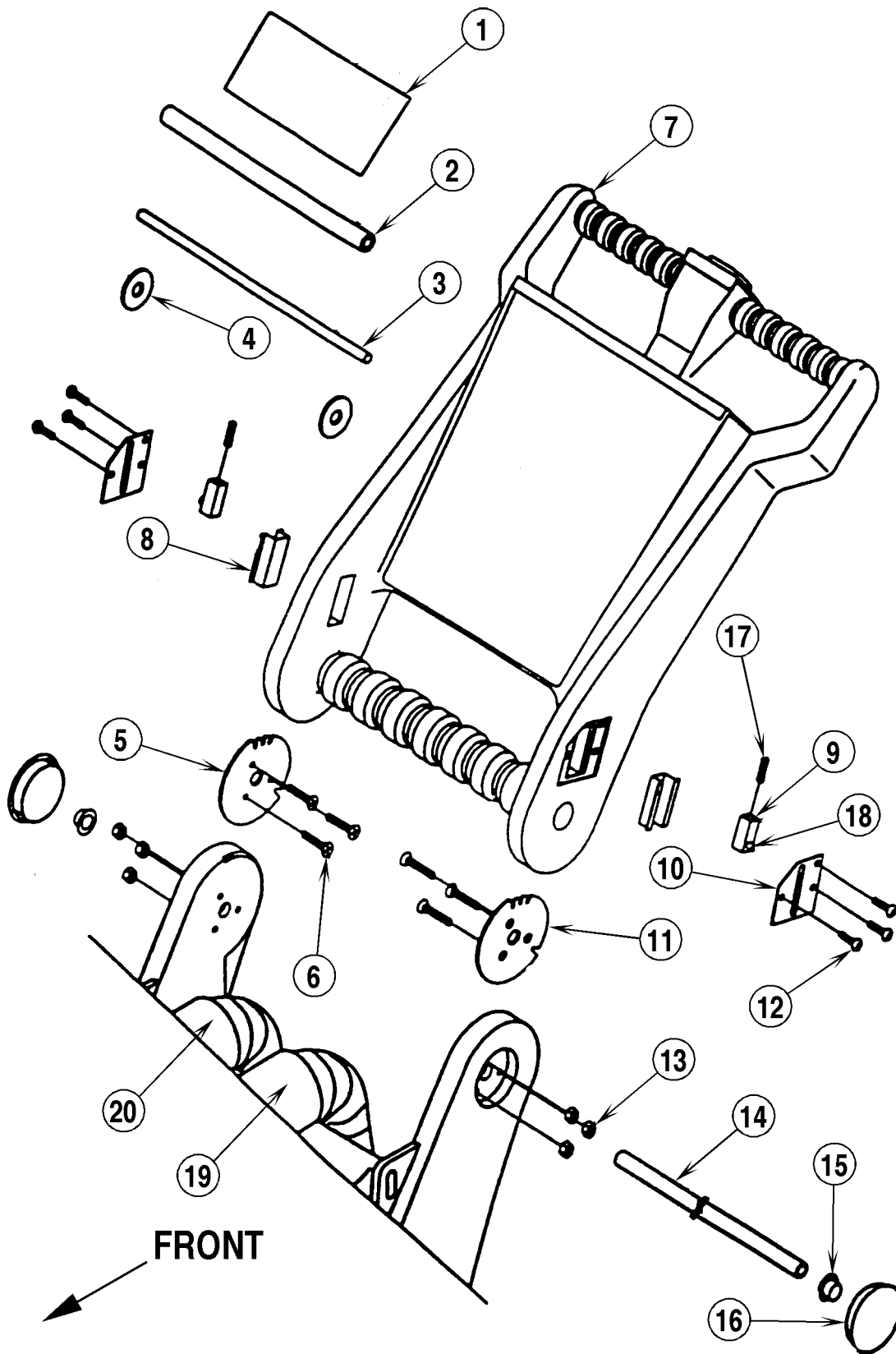
# HANDLE ASSEMBLY

01-2

4

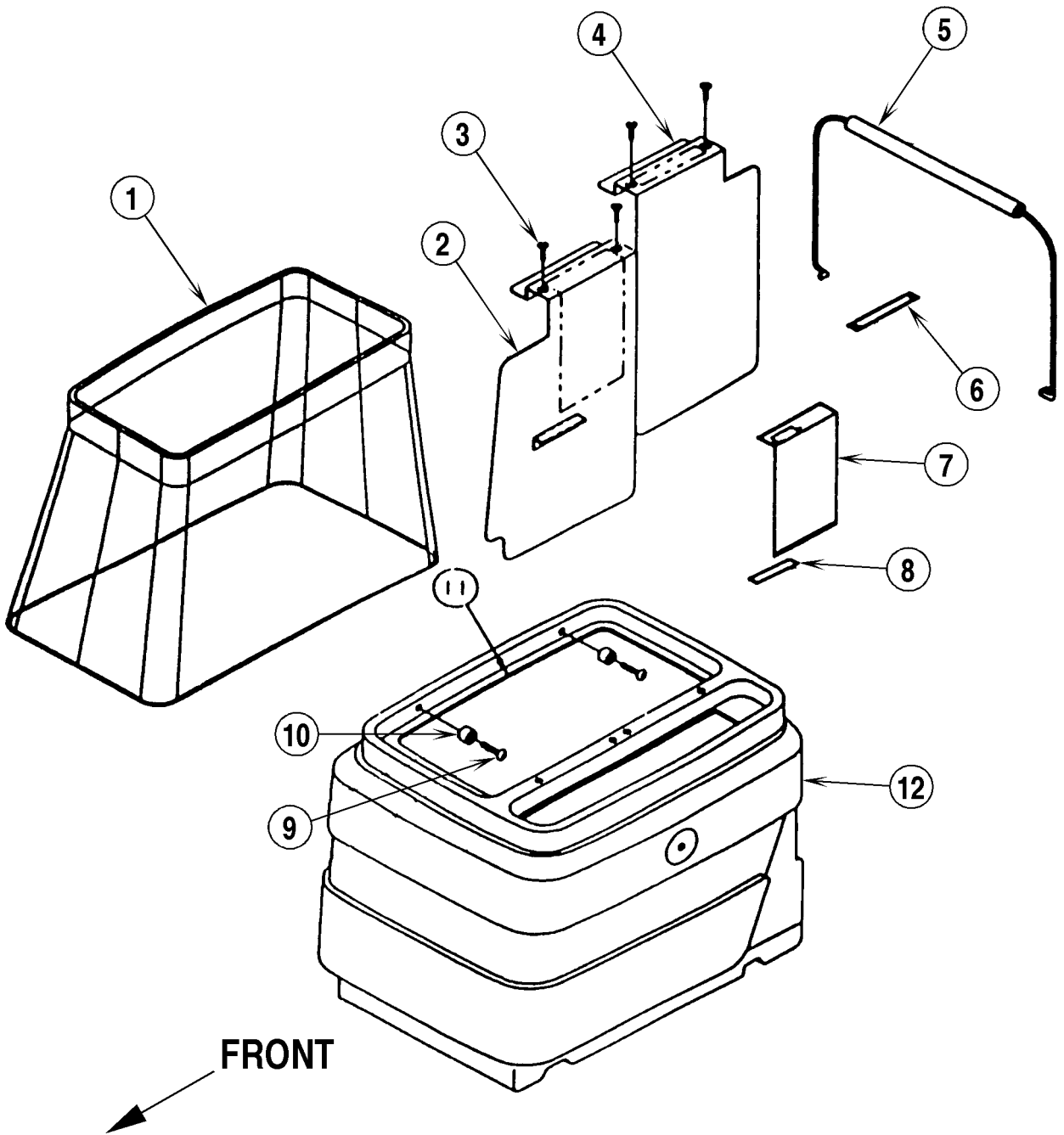
EC 12

02-10



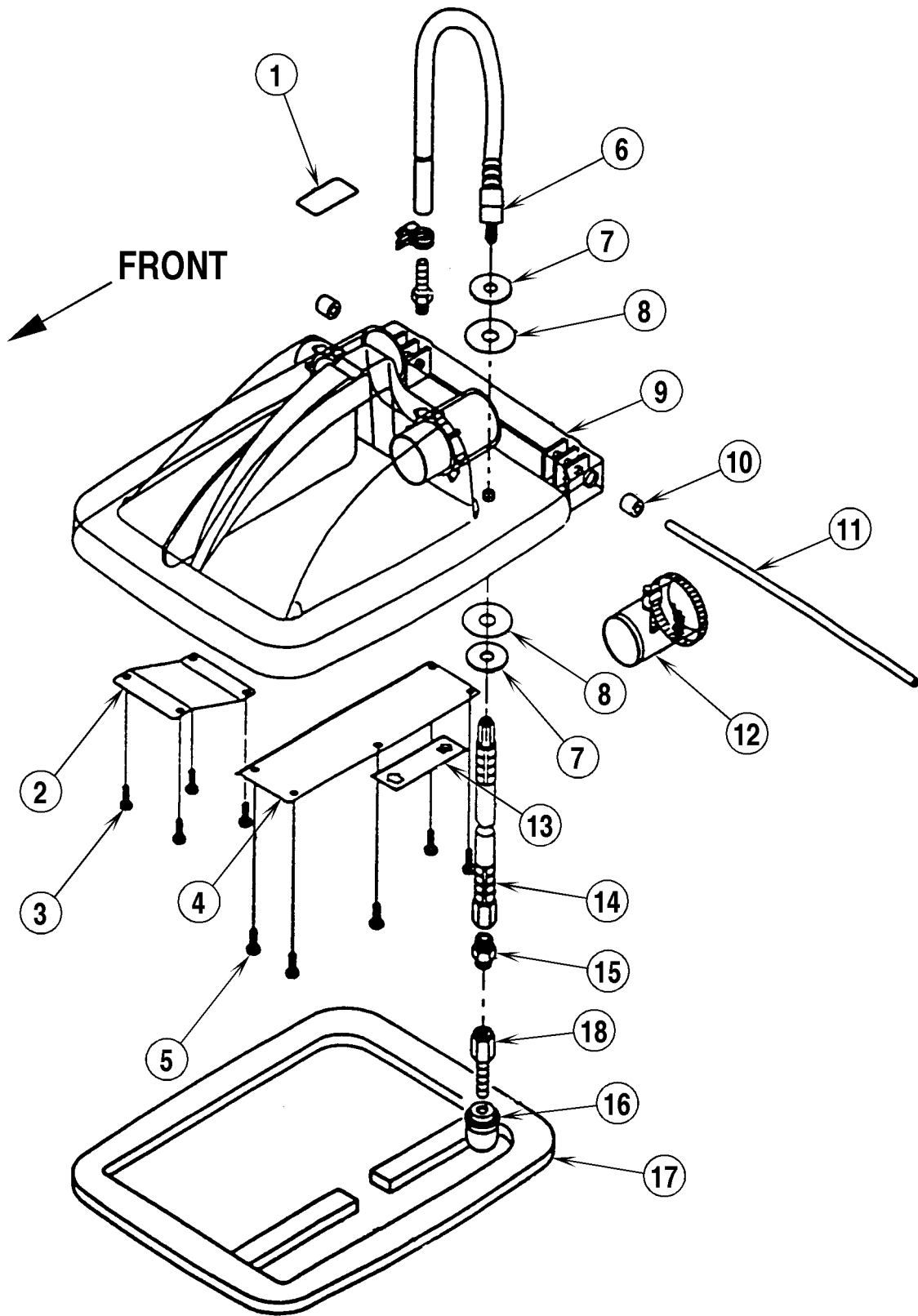
01-2	<b>HANDLE ASSEMBLY</b>		
02-10	<b>EC 12</b>		<b>5</b>

Item	Ref. No.	Qty	Description
1	56628952	1	Label,Handle Adjust.
2	56628953	1	Tube,Pull Lock
3	56628954	1	Rod,Pull Lock
4	56628955	2	Washer,Nylon—1.25" Od
5	56628956	1	Disk,Locking—Right
6	56628957	6	Screw—8-32 X 1,Flat Hd
7	56628958	1	Handle
8	56628959	2	Bracket,Guide
9	56628960	2	Slide Lock,Nylon
10	56628961	2	Plate,Cover
11	56628962	1	Disk,Locking—Left
12	56628917	6	Screw, Mach—8/32 X 3/8l
13	56628963	6	Nut,Lock—8-32 Ss
14	56628964	1	Tube,Handle
15	1410777010	2	Nut, Push—1/2" Cap
16	56628965	2	Plug,Hole—2"
17	56628966	2	Spring,Locking Mechanism
18	56628967	2	Pin,Dowel—Slide Lock
19	56649828	1	Cuff, Hose – Gray 1.5 Hose, 1.75 Tube-Left
20	1410969010	1	Cuff, Hose – Black 1.5 Hose, 1.75 Tube-Right



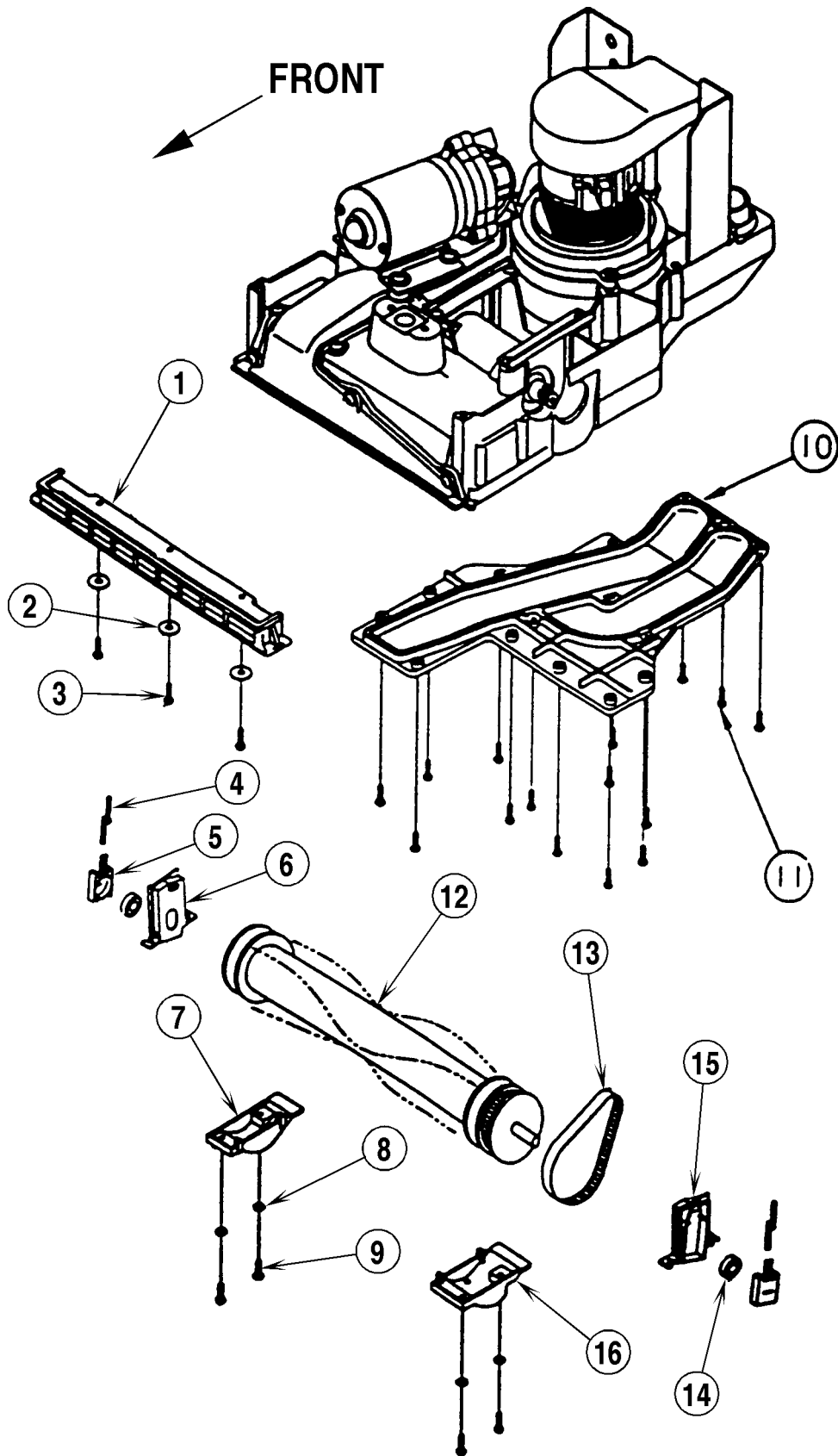
01-2	<b>TANK ASSEMBLY</b>		
02-10	<b>EC 12</b>		<b>7</b>

Item	Ref. No.	Qty	Description
	56649829	1	Bucket Complete (#1-12)
1	1410890010	1	Asm,Bladder—3 Gal
2	56628968	1	Plate,Divider—Front
3	56628969	4	Screw—8-32 X 1/2 Flat Hd Ss
4	56628970	1	Plate,Divider—Rear
5	1410894010	1	Asm,Bail Handle
6	56628971	1	Label,Anti Foam
7	56628972	1	Label,Do Not Overfill
8	56628973	1	Label,Fill Level
9	56628974	2	Screw—8-32 X 5/8 Truss Hd Ss
10	56628975	2	Spacer,Nylon
11	1410900010	1	Gasket,Bucket
12	1410901010	1	Bucket—3 Gal.



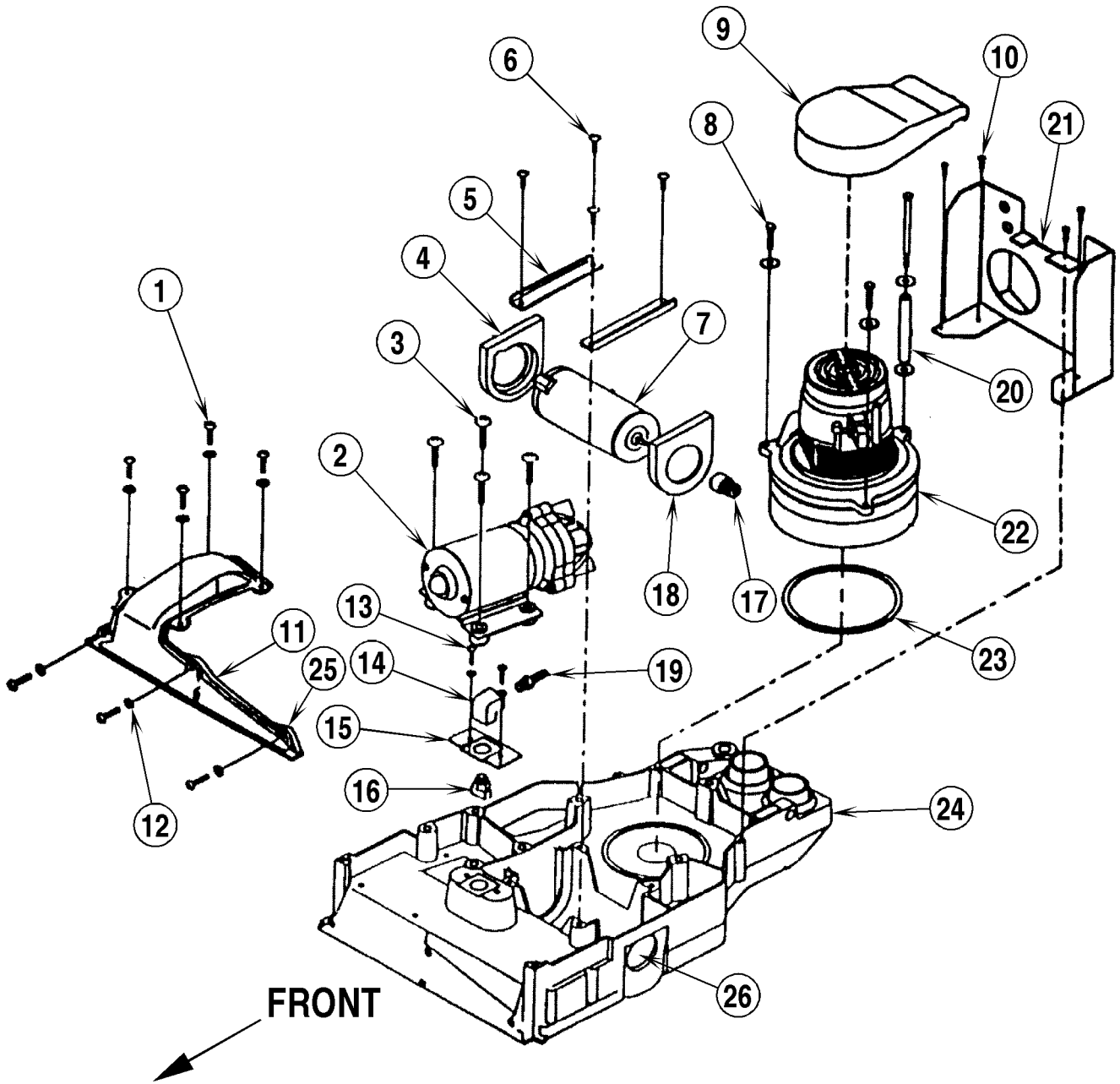
01-2	<b>LID ASSEMBLY</b>		
02-10	<b>EC 12</b>		<b>9</b>

Item	Ref. No.	Qty	Description
	56649830	1	Dome Assembly Complete
	56649831	1	Dome W/Gaskets, Inserts & Labels
	56649832	1	Dome, Inserts, Tube Only, W/O Gaskets
1	56628976	1	Label, Patents
2	56628977	1	Plate, Deflector
3	56628978	7	Screw—6-32 X 3/8 Rd Hd Ss
4	56628979	1	Plate, Lid Gasket
5	56628980	2	Screw—6-32 X 3/8 Flat Hd Ss
6	56628981	1	Asm, Hose—Pump To Dome
7	56628982	2	Washer, Flat
8	56628983	2	Gasket, Rubber
9	1410910010	1	Dome, Clear
10	56628984	2	Tube, Latex—1/2" Long
11	56628985	1	Shaft, Dome Hinge
12	56628986	1	Filter, Screen—Air
13	56628987	1	Label, Clean Filter
14	1410915010	1	Asm, Hose W/Filter & Ck. Valve
15	56628989	1	Check Valve
16	1410917010	1	Filter, Screen—Water
17	56628990	1	Gasket, Dome
18	56649737	1	Barb, 1/4 x 3/8 FP Brass



01-2	<b>BRUSH ROLL ASSEMBLY</b>		
02-10	<b>EC 12</b>		<b>11</b>

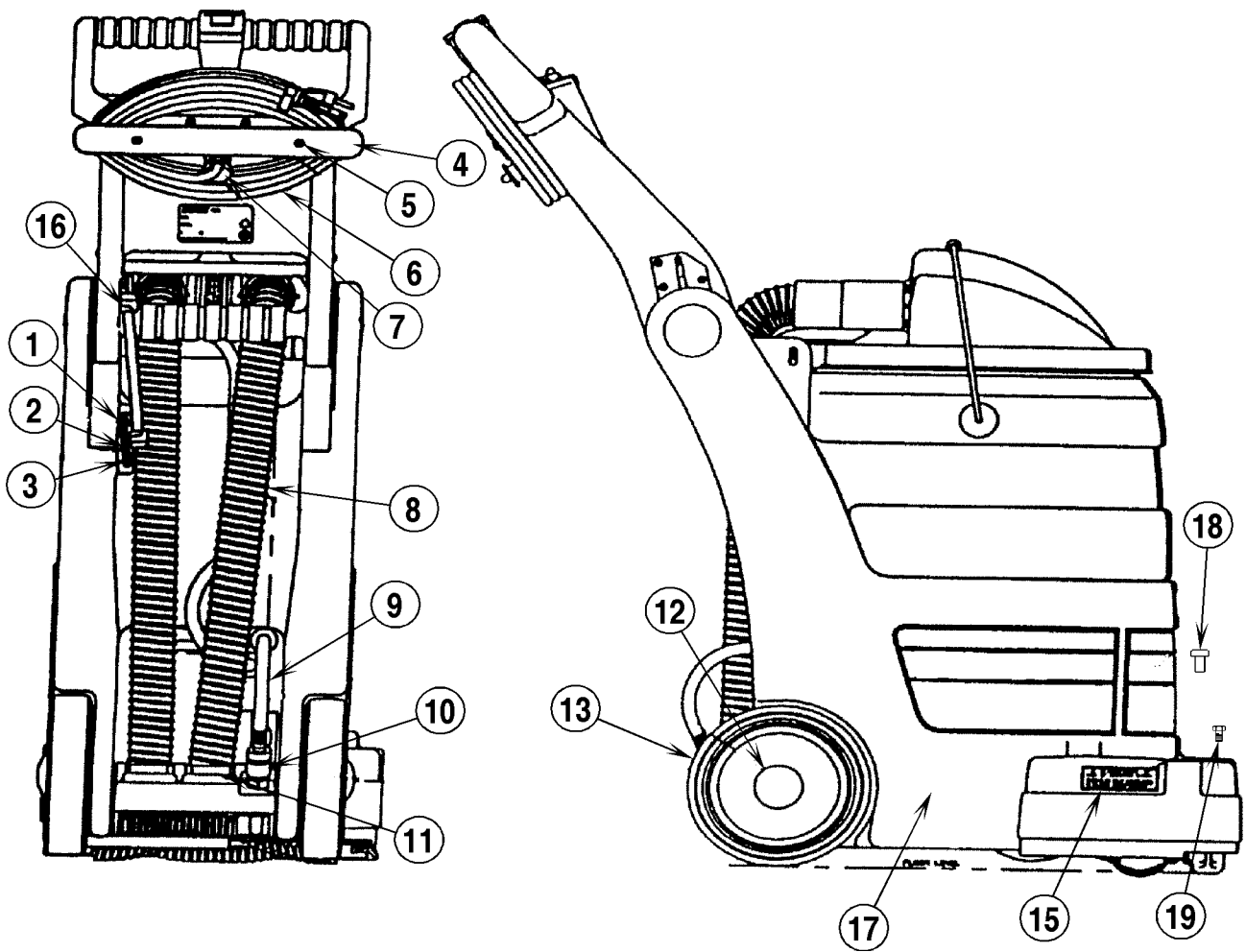
Item	Ref. No.	Qty	Description
1	1410920010	1	Shoe, Vacuum
	56649841	1	Shoe, Vacuum W/Gasket
2	56628992	3	Washer, Flat—#8 Ss
3	56628910	3	Screw, Mach—8-32 X 3/4, Ss
4	56628993	4	Spring, Brush
5	56628994	2	Block, Slide
6	1410933010	1	Retainer, Brush—Left
7	56649809	1	Cover, Brush Retainer—Left
8	56628995	4	Washer, Cushion
9	56628974	4	Screw—8-32 X 5/8 Truss Hd Ss
10	56628996	1	Cover, Bottom
11	56628997	15	Screw—8-16 X 1 Plastite Pan Hd
12	56649815	1	Asm, Brush Roll—W/Pulley
13	1410930010	1	Belt—7mm X 300 Mm X 3mm Pitch
14	1410931010	2	Bearing, Brush
15	1410932010	1	Retainer, Brush—Right
16	56649810	1	Cover, Brush Retainer—Right



01-2	<b>MOTORS</b>			
02-10	<b>EC 12</b>			<b>13</b>

Item	Ref. No.	Qty	Description
1	56628974	7	Screw—8-32 X 5/8 Truss Hd Ss
2	1410934010	1	Pump—115v,1.4 Gpm,W/Bypass
	56649738	1	Pump, Complete (includes wire connectors)
3	56628998	4	Screw—1/4-20 X 1 Rd Hd Ss
4	1410936010	1	Mount, Motor—Pump Rear
5	56628999	2	Clamp, Brush Motor
6	56628974	4	Screw—8-32 X 5/8 Truss Hd Ss
7	56629000	1	Motor, Brush—115v/60hz
8	56629001	2	Asm, Bolt 1-1/4"
9	56629002	1	Intercooler
10	56628997	4	Screw—8-16 X 1 Plastite Pan Hd
11	56629003	1	Cover, Suction
	56649834	1	Cover, Suction W/Gasket
12	56629004	7	Washer, Backup
13	56629005	2	Screw—8-32 X 1/2 Phil. Hd.
14	56629006	1	Elbow, Brs—90deg, 1/8fp X 1/8fp
15	56629007	1	Bracket, Spray Nozzle
16	56629008	1	Nozzle, Spray—1/8" X 11006
17	1410947010	1	Pulley—16 Tooth W/Screw <b>NOTE</b>
18	56629009	1	Mount, Motor—Front
19	1410949010	1	Barb—1/4" X 1/8" Mp, Brass
20	56629010	1	Asm, Bolt—1/4 X 4"
21	56629011	1	Backplate
22	1410952010	1	Mtr, Vac—115v/60hz
23	56629013	1	Gasket, Vac Motor
24	56649811	1	Chassis
25	56649835	4	Lens Gasket
26	56649836	1	Ball Valve

**NOTE:** You must order a qty of 7 screws PN56649833 when ordering 1410947010.

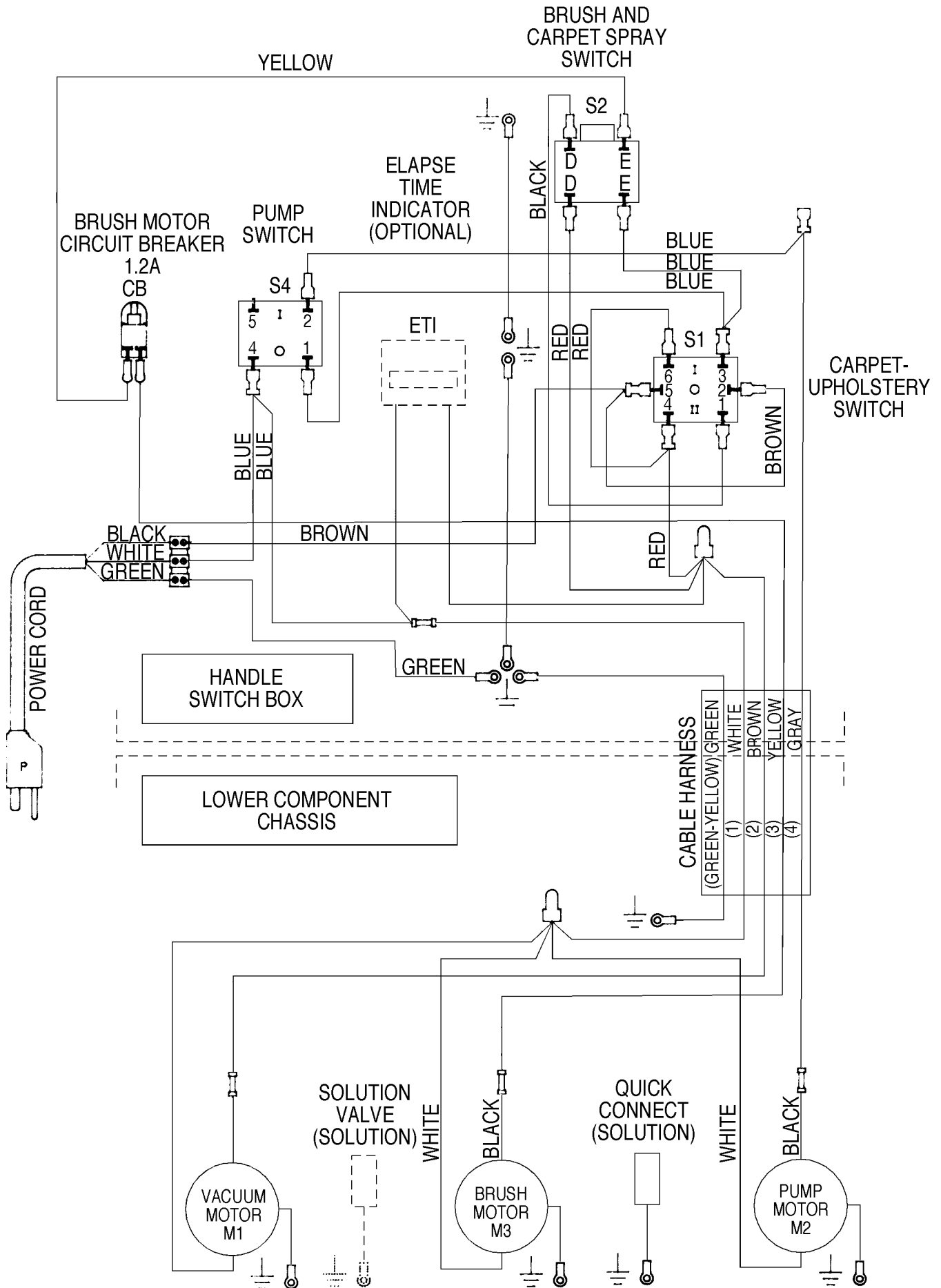


01-2	<b>EXTERIOR PARTS</b>		
02-10	<b>EC 12</b>		<b>15</b>

Item	Ref. No.	Qty	Description
1	56629014	4	Screw—6-32 X 3/4 Phil. Hd.
2	56629015	2	Plate,Strain Relief
3	56629016	2	Gasket,Strain Relief
4	56629017	1	Plate,Cord Wrap
5	56628917	2	Screw, Mach—8/32 X 3/8l
6	56629018	1	Cord,Power—16-3 Sjto,20'
7	56629019	1	Relief,Strain
8	56629020	2	Hose,Vac—1-1/2" Wire Reinf.
9	56629021	1	Asm,Hose—Quick Connect
10	56629022	1	Quick Disconnect
11	56629023	2	Clamp,Hose—1-1/2" Nylon
12	1410965010	2	Cap, Hub
13	56629024	2	Wheel—7" Dia. X 3/8" Bore
*	56649837	1	Axle, Wheel
15	56629025	1	Label,Caution
16	56629026	2	Relief,Strain
17	56649839	1	Motor Housing
18	56649838	2	Plug, Hole 1"
19	56649840	2	Scr, Phil 10-32 x .62
**	56033224	A/R	Asm, Hose-15ft - 100 Psi Rated
**	56034053	A/R	Asm, Hose-20ft - High Press-100 Psi Rated
**	1410858010	A/R	Hose Assy Tool Package
**	56039631	A/R	Drag Tool, SS

\* = Not Shown

\*\* = Optional Accessories



01-2	<b>RECOMMENDED SPARE PARTS</b>		
02-10	<b>EC 12</b>		<b>17</b>

Ref. No.	Qty	Description
1410751010	3	Cover, Rocker Switch
56628942	1	Switch,Rocker—Dpdt, Black
1410866010	1	Switch,Push Button
1410749010	1	Switch,Rocker—115/230,20a
56628950	1	Circuit Breaker—1.2a
56628951	1	Seal,Circuit Breaker
56628960	2	Slide Lock,Nylon
56628966	2	Spring,Locking Mechanism
56628967	2	Pin,Dowel—Slide Lock
56628986	1	Filter,Screen—Air
56628989	1	Check Valve
1410917010	1	Filter,Screen—Water
56628993	4	Spring,Brush
56649815	1	Asm,Brush Roll W/Pulley
1410930010	1	Belt—7mm X 300mm X 3mm Pitch
1410931010	2	Bearing,Brush
1410934010	1	Pump—115v,1.4gpm,W/Bypass
56629008	1	Nozzle,Spray—1/8" X 11006
1410947010	1	Pulley—16 Tooth
56629020	2	Hose,Vac—1-1/2" Wire, Reinf.
56649828	1	Cuff, Hose – Gray 1.5 Hose, 1.75 Tube-Left
1410969010	1	Cuff, Hose – Black 1.5 Hose, 1.75 Tube-Right



Kent/Euroclean  
14600 21st Avenue North  
Plymouth, MN, 55447-3408  
[www.eurocleanusa.com](http://www.eurocleanusa.com)  
Phone: 800-334-1083  
Fax: 866-261-4779