



Electronic Service Manuals

This electronic document is provided as a service to our customers. We do not create the contents of the information contained in this document. Should you have detailed questions pertaining to the information contained in this document, you may contact Michco, or the manufacturer which provided the original information in this electronic deliverable. Michco's only part in this electronic deliverable was the electronic assembly process. By providing this manual on line we are not guaranteeing parts availability.

You may contact Michco through the following methods:

Phone (517) 484-9312 or (800) 331-3339

2011 N. High St. -- Lansing, Michigan -- 48906

Fax: (517) 484-9836

Email: CustServe@Michco.com

Web site: www.Michco.Com

Parts Web site: www.FloorMachineParts.Com

Order Parts on Line at:

www.FloorMachineParts.Com

Directly to Parts & Service:

By Email: **Shop@Michco.com**

By Fax: (517) 702-2041

By Voice: Use numbers above.

Serving the Cleaning Industry Since 1922

Notice: All copyrighted material remains property of original owners, all trademarks are property of respective owners. Manuals are subject to Manufacturer's reproduction limitations. Originals or reproductions were provided by manufacturers through a request. We make no warranty as to the correctness of information provided in this document and you assume all risk. By placing these manuals on line we are not declaring our corporation to be an manufacturer authorized dealer or provider, please check our web site for authorized manufacturers we represent.



IPC Eagle

Industrial Vacuums

Planet Optimum Series

Operations and parts manual



IMPORTANT SAFETY INSTRUCTIONS

When using an electrical appliance, basic precaution must always be followed, including the following:

READ ALL INSTRUCTIONS BEFORE USING THIS MACHINE.

This machine is for commercial use.

WARNING



DANGER: Failure to read and observe all DANGER statements could result in severe bodily injury or death. Read and observe all DANGER statements found in your Owner's Manual and on your machine.



WARNING: Failure to read and observe all WARNING statements could result in injury to you or to other personnel; property damage could occur as well. Read and observe all WARNING statements found in your Owner's Manual and on your machine.



CAUTION: Failure to read and observe all CAUTION statements could result in damage to the machine or to other property. Read and observe all CAUTION statements found in your Owner's Manual and your machine.



DANGER: Failure to read the Owner's Manual prior to operating or attempting any service or maintenance procedure to your machine could result in injury to you or to other personnel; damage to the machine or to other property could result as well. You must have training in the operation of this machine before using it. If you or your operator(s) cannot read English, have this manual explained fully before attempting to operate this machine.



DANGER: Operating a machine that is not completely or fully assembled could result in injury or property damage. Do not operate this machine until it is completely assembled. Inspect the machine carefully before operation. Use only as described in this manual. Use only the manufacturer's recommended attachments.



DANGER: Machines can cause an explosion when operated near flammable materials and vapors. Do not use this machine with or near fuels, grain dust, solvents, thinners, or other flammable materials.



DANGER: Do not pick up flammable fluids, dust or vapors.



DANGER: Do not vacuum anything that is burning or smoking, such as cigarettes, matches, or hot ashes.



DANGER: This machine **is not** suitable for picking up health endangering dust.



DANGER: Using a machine with a damaged power cord could result in an electrocution. Do not use the machine if the power cord is damaged. Do not use the electrical cord to move the machine. Keep cord away from heated surfaces. Do not unplug by pulling on the cord; grasp the plug, not the cord. Turn off all controls before unplugging. Do not close a door on cord or pull around sharp edges or corners.



DANGER: Electrocution could occur if maintenance and repairs are performed on a unit that is not properly disconnected from the power source. Disconnect the power supply before attempting any maintenance or service.



Warning: Operating a machine without observing all labels, decals, etc., could result in injury or damage. Read all machine labels before attempting to operate the machine. Make sure all of the labels are attached or fastened to the machine. Get replacement labels and decals from the manufacturer's distributor.



Warning: Electrical components can "short-out" if exposed to water or moisture. Keep the electrical components of the machine dry. Always store the machine in a dry area.



Warning: Use of this machine to move other objects or to climb on could result in injury to the operator or damage to the machine. Do not use this machine as a step or furniture. Do not allow to be used as a toy. Close attention is necessary when used by or near children.



Warning: Moving parts of this machine can cause injury and/or damage. Keep hands, feet, loose clothing, hair, fingers, and all parts of the body away from openings and moving parts.



Warning: Electrocutation could occur if you handle the plug or appliance with wet hands. Do not handle plug or appliance with wet hands.



Warning: The machine employs a removable float for wet pick-up operation to reduce risk of electrical shock. Always install float before any wet pick-up operation.



Warning: Rotating fan blades inside the cover. Before opening cover, switch off machine. Wait until the fan/brush stops completely or dust and debris may be ejected.



Warning: If the machine is not working properly, has been dropped, damaged, left outdoors, or dropped into water, return it to an Authorized service center.



Warning: Damage could occur to machine if openings are blocked. Do not put any object into openings. Do not use any opening blocked: keep free of dust, lint, hair, and anything that may reduce air flow.



Warning: Injury could occur to the operator or the machine if used without the dust bag and/or filters in place. Do not use the machine without the dust bag and/or filters in place.



Warning: Injury to the operator and/or damage to the machine could occur when cleaning on stairs, unless caution is used. Use extreme caution when cleaning on stairs.

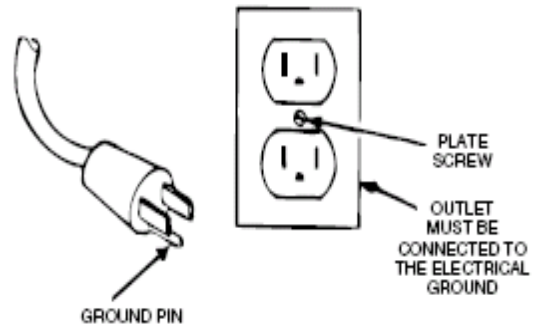


Warning: To reduce the risk of electrical shock, always use a 3-wire electrical system connected to the electrical ground. Whenever possible connect the machine to an outlet protected by a ground fault interrupter (GFCI). See "Grounding Instructions."

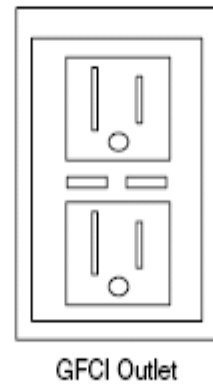
SAVE THESE INSTRUCTIONS

120 Volt Machine Instructions For Connection To The Power Supply And The Electrical Ground

This machine must be connected to the electrical ground to protect the operator from electrical shock. The machine has an approved power cord with three conductors and a plug with three terminals. Connect the plug to a receptacle that has three holes and is connected to the electrical ground. The green (or green and yellow) conductor in the cord is the ground wire. Never connect this wire to any terminal other than the ground terminal.



This machine uses a 120 volt AC 60 cycle electrical circuit. Make sure you have the correct frequency and voltage before connecting the power cord to an outlet. The machine has a plug as shown in Figure 1. If a receptacle connected to the electrical ground as shown in Figure 1 is not available, have one installed by an electrical contractor. **Do not use an adapter.**



Warning: To reduce the risk of electrical shock, protect the machine from rain. Keep the machine in a dry area.



Warning: To reduce the risk of electrical shock, always use a 3-wire electrical system connected to the electrical ground. Whenever possible connect the machine to an outlet protected by a ground fault interrupter (GFCI).



Warning: Do not cut, remove or break the ground pin. If the outlet does not fit the plug, consult your electrical contractor.



Warning: Have worn, cut or damaged cords and plugs replaced by an authorized service person.



Warning: If it becomes necessary to use an extension cord to reach an electrical outlet, you must use one that is at least one size larger in wire size. Such as a power cord that is marked 12/3 would need to use an extension cord that is marked 10/3. Do not use an extension cord that is undersized.

IMPORTANT INSTRUCTIONS

- Before use the equipment must be correctly assembled with all of its components
- Check that the electrical outlet is correct for use with the plug on the machine
- Before connecting, check that the specified motor voltage corresponds to the main voltage available
- Never use the equipment near flammable, explosive or toxic substances: sparks from the motor could cause dangerous reactions.
- Always unplug the machine from the electrical outlet when leaving machine unattended or before attempting any repair.
- Service and repair should be done by qualified personnel only. Use only original manufacturer's replacement parts.

Operation

This machine is a commercial vacuum designed for dry pick up only. The three motors can be run simultaneously or independently as the job requires. The machine can be equipped with a vacuum equalizer hose (VEK) which enables the use of standard plastic garbage bags for the collection of dust and debris, it is recommended that heavy duty "Contractor" style bags are used. When the bag is full and ready to be removed, turn off all motors and allow the machine to stop completely before opening machine up. Prior to opening machine operate the filter shaker handle to knock excess debris off of the filter. To remove the debris collection bag, lift up on the bin release handle on the collection bin lower the collection bin to the floor and roll it out from under the machine. Close the debris collection bag and either tie the opening shut or use a plastic wire tie to close and prevent dust from escaping, the bag can now be removed for disposal. When replacing the collection bag make sure the bag is fully opened and fully lines the lower collection tank.



Depending on the type of dust and debris being picked up it may be necessary to operate the filter shaker before it is time to empty the collection bag. To clean the filter, slide the filter shaker handle to the right, tion. This action will shake the filter assembly and allow the loose dust to fall into the collection bin, at the same time it blows air backwards through the filter

To extend the life of the filter you may want to occasionally remove the complete filter assembly and vacuum or rinse the filter. Allow the fabric to dry fully before returning it to the inside of the machine.

Filtration can also be enhanced by adding one of the various cartridge filters to the bottom of the motor head assembly. These optional filters can be purchased from your Distributor, the optional filters available are listed below:

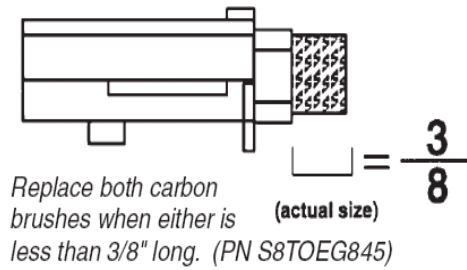
S8321142PH Cartridge Filter, HEPA



Periodic Maintenance

(Every six to twelve months)

1. Check filter for wear, replace dirt saturated filters that do not respond to normal cleaning.
2. Inspect gasket seals and replace those which have begun to leak.
3. Examine carbon motor brushes and commutator.



Servicing The Filter

The filter is accessed by lifting the head assembly off the tank.

The Filter is located underneath the cyclone tube. Remove the black hand knob, and remove the cyclone tube first. Remove the black hand knob holding the filter in place, the filter can now be removed from the head.

Note:

- Be sure to frequently clean the filters.
- Allow filters to thoroughly air dry after washing them before returning them to the machine.
- Worn filters can affect vacuum performance. Replace the filters when they become worn out and normal cleaning will not restore vacuum performance.

Servicing The Vac Motor

Motor Replacement

1. Disconnect power cord from power source.
2. To access the vac motor, remove the screws that attach the main cover to the head assembly and set the cover to one side.
3. Disconnect the motor's 2 red lead wires from the main wiring bridge.
4. Disconnect green/yellow wire by removing the screw from the motor core.
5. Remove the four motor mounting screws.
6. Remove motor plate and set aside.
7. Take out the motor and remove the upper and lower gaskets.
8. Inspect gaskets. If they show signs of wear replace the.
9. Install gaskets onto new motor ensuring that they are properly seated.
10. Install the new motor. Make sure foam mufflers are positioned properly.
11. Attach motor plate to motor.
12. Connect green/yellow wire to motor core.
13. Connect motor's 2 red lead wires to main wiring bridge.
14. Re-assemble vac cover.
15. Test for proper operation.

Servicing The Vac Motor

Carbon Brush Replacement

1. Disconnect power cord from power source.
2. To access the vac motor, remove the screws that attach the main cover to the head assembly and set the cover to one side.
3. Remove the motor cover by removing two screws. **See Fig. 1**
4. Remove the wire terminal from carbon brush housing. **See Fig. 2**
5. Remove the carbon brush assembly by removing the 2 screws that attach it to the vac motor. **See Fig.3**
6. Inspect armature commutator. If it is extremely pitted, grooved or not concentric then the motor will need to be replaced or sent to a qualified service center.
7. Slide the yellow brush housing from plastic holder. **See Fig. 4**
8. Reverse steps 7 through 4 to install new brush and housing (part number S8TOEG845)
9. Repeat steps 4 through 8 for the other carbon brush.
10. Reverse steps 3 and 2 for re-assembly.
11. Test for proper operation.

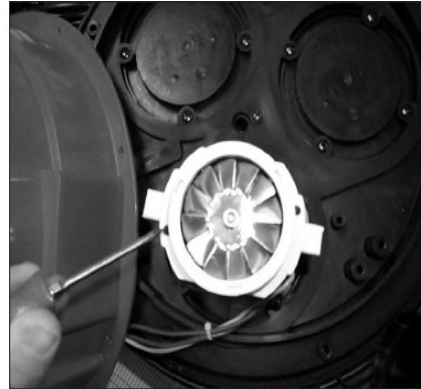


Fig. 1



Fig. 2

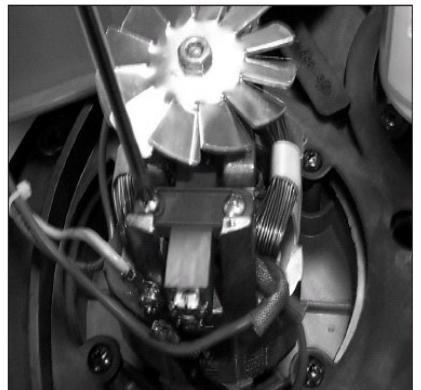


Fig. 3

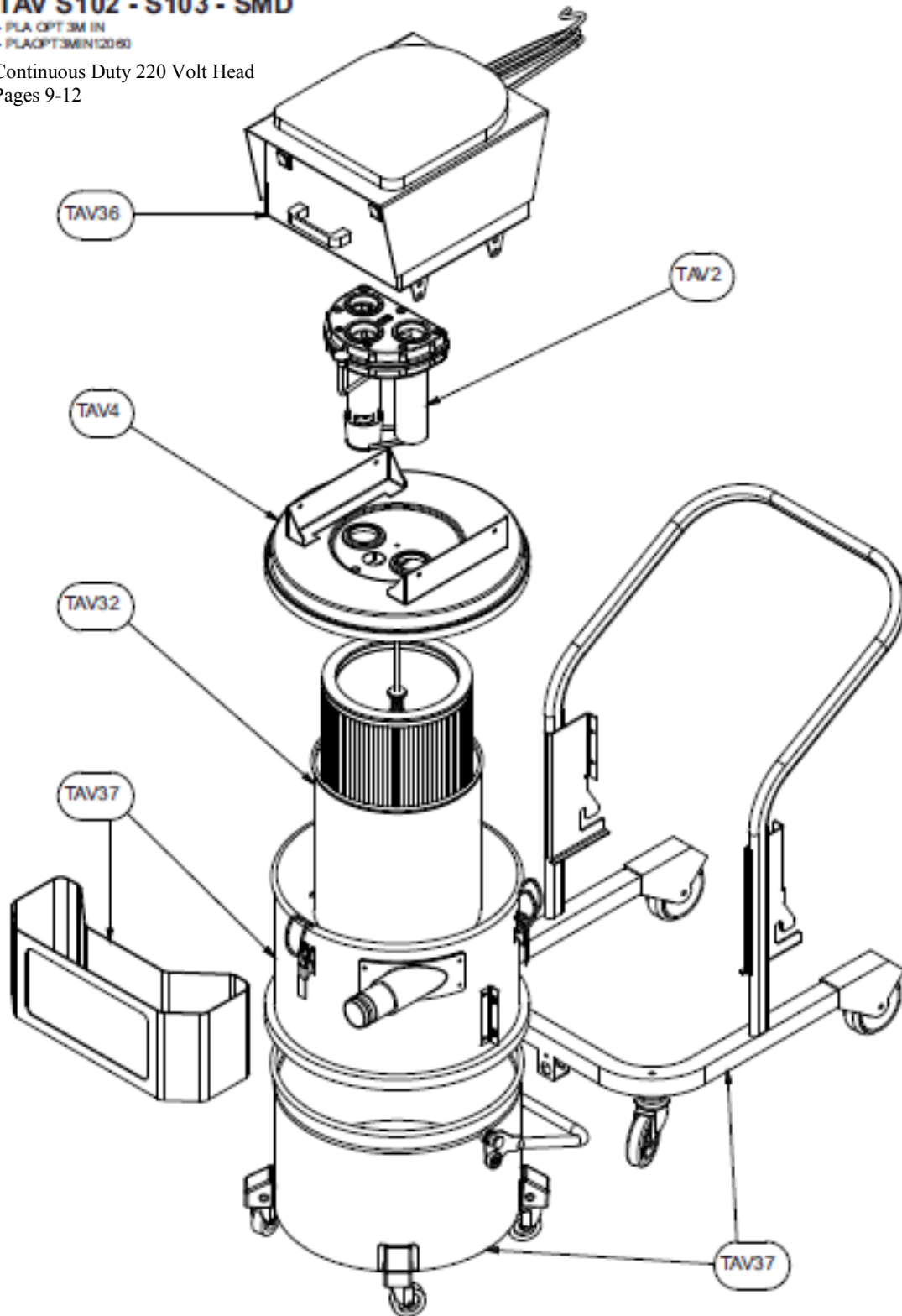


Fig. 4

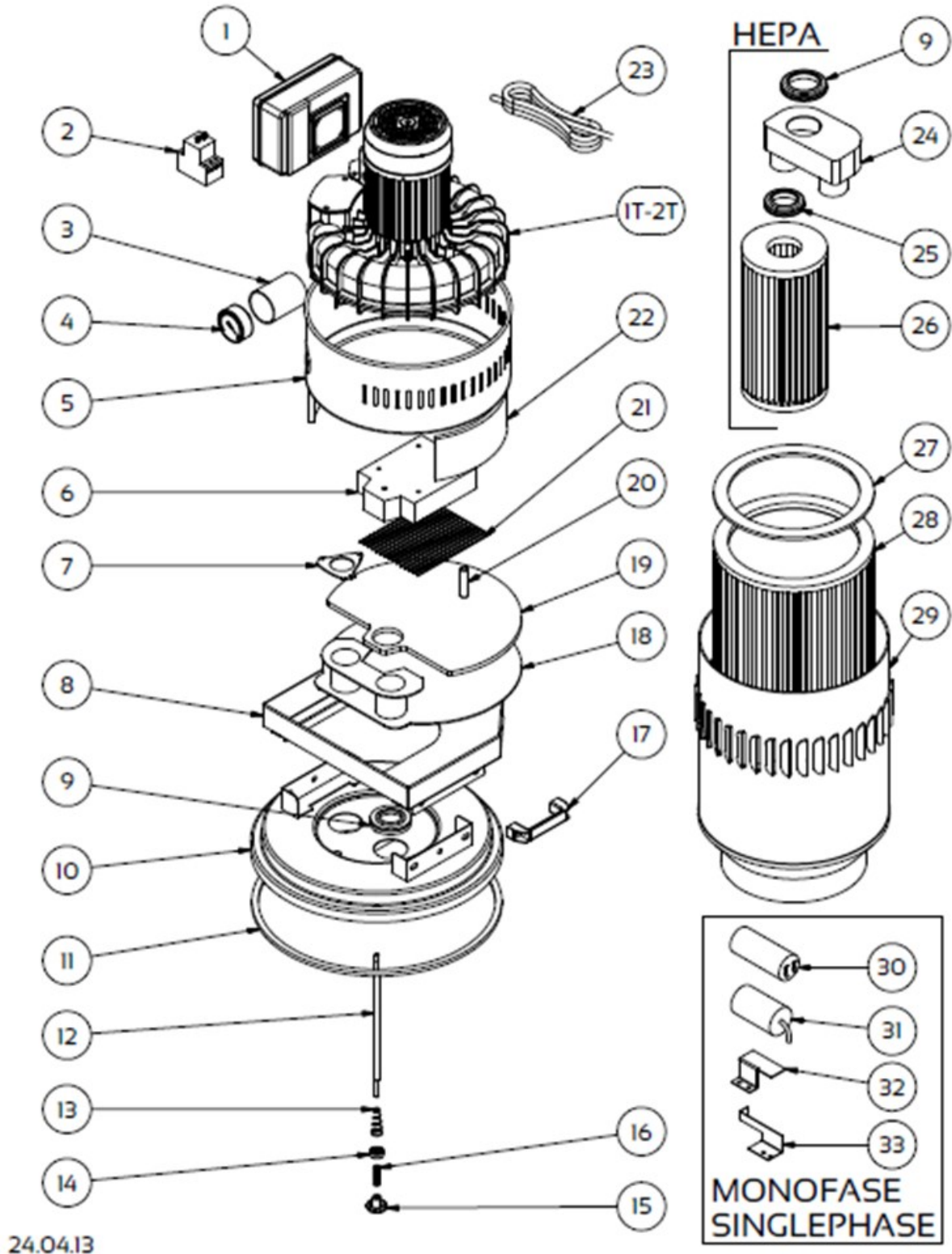
TAV S102 - S103 - SMD

- PLA OPT 3M IN
- PLA OPT 3MIN (2060)

Continuous Duty 220 Volt Head
Pages 9-12



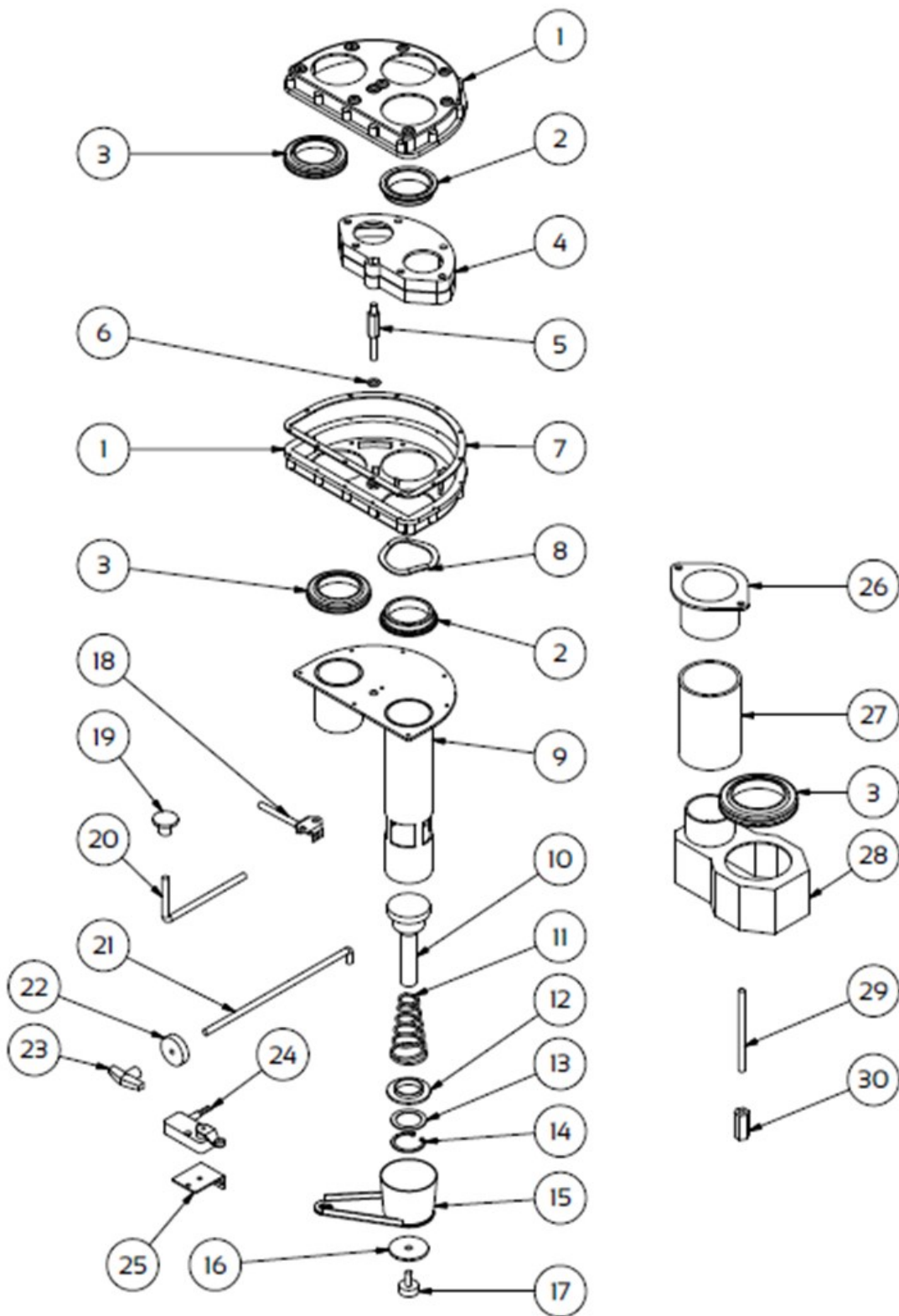
Continuous Duty 220 Volt Vacuum Head



Continuous Duty 220 Volt Cleaning Valve

<u>Item</u>	<u>Part Number</u>	<u>Description</u>
1	S8150100	Box Weldment
2	S81T0000	Electrical Board
3	S8070200	Tube
4	S8070300	Sensor
5	S8150500	Cover
6	S8150600	Support Box
7	S82T3700	Gasket
8	S8150800	Support Weldment
9	S8011400	Seal
10	S8151000	Ring Weldment
11	S8111300	Gasket
12	S8191200	Rod, filter support
13	S8151300	Spring
14	S8013400	Washer
15	S8013600	Retainer
16	S8013500	Spring
17	S8151700	Handle
18	S8151800	Support, motor Flow
19	S8151900	Support, Weldment
20	S8152000	Support, stand off
21	S8152100	Screen
22	S8152200	Curved Support
23	S8074003	Cord
24	S83211T	Adaptor—HEPA Filter
25	S8072600	Seal, Rubber
26	S8321142PH	Filter, HEPA
27	S8172700	Seal
28	S8192800	Filter
29	S8192900	Cover, Filter
30	S82T4060	Condenser—60
31	S82T4140	Condenser—40—Not Used
32	S82T4300	Condenser Support—60
33	S82T7200	Condenser Support—40 Not Used
TAV 1T	S8425MM	Turbine Complete

Continuous Duty 220 Volt Cleaning Valve



Continuous Duty 220 Volt Vacuum Head

<u>Item</u>	<u>Part Number</u>	<u>Description</u>
1	S8210107	Valve Body
2	S8210200	Ring Valve
3	S8011400	Ring Valve
4	S8210403	Air Diverter Box
5	S8210500	Hexagonal Bolt
6	S8210600	Wash
7	S8210700	Gasket
8	S8210800	Ring Compensation
9	S8210900	Intake Manifold
10	S8211000	Piston, Nylon
11	S8211100	Spring
12	S8211200	Washer, aluminum
13	S8211300	Washer
14	S8211400	Snap Ring
15	S8211500	Block Piston
16	S8211600	Washer
17	S8211700	Bumper, vibration
18	S8211800	Lever
19	S8211900	Knob
20	S8212000	Lever
21	S8212100	Lever, Extension
22	S8212200	Spacer, Washer
23	S8212300	Handle
24	S8212400	Junction
25	S8212500	Support, Junction
26	S8212600	Tube, Flange
27	S8212700	Sleeve, Rubber
28	S8212800	Box, recovery
29	S8212900	Extension, piston
30	S8213000	Connector

110 Volt Vacuum Head

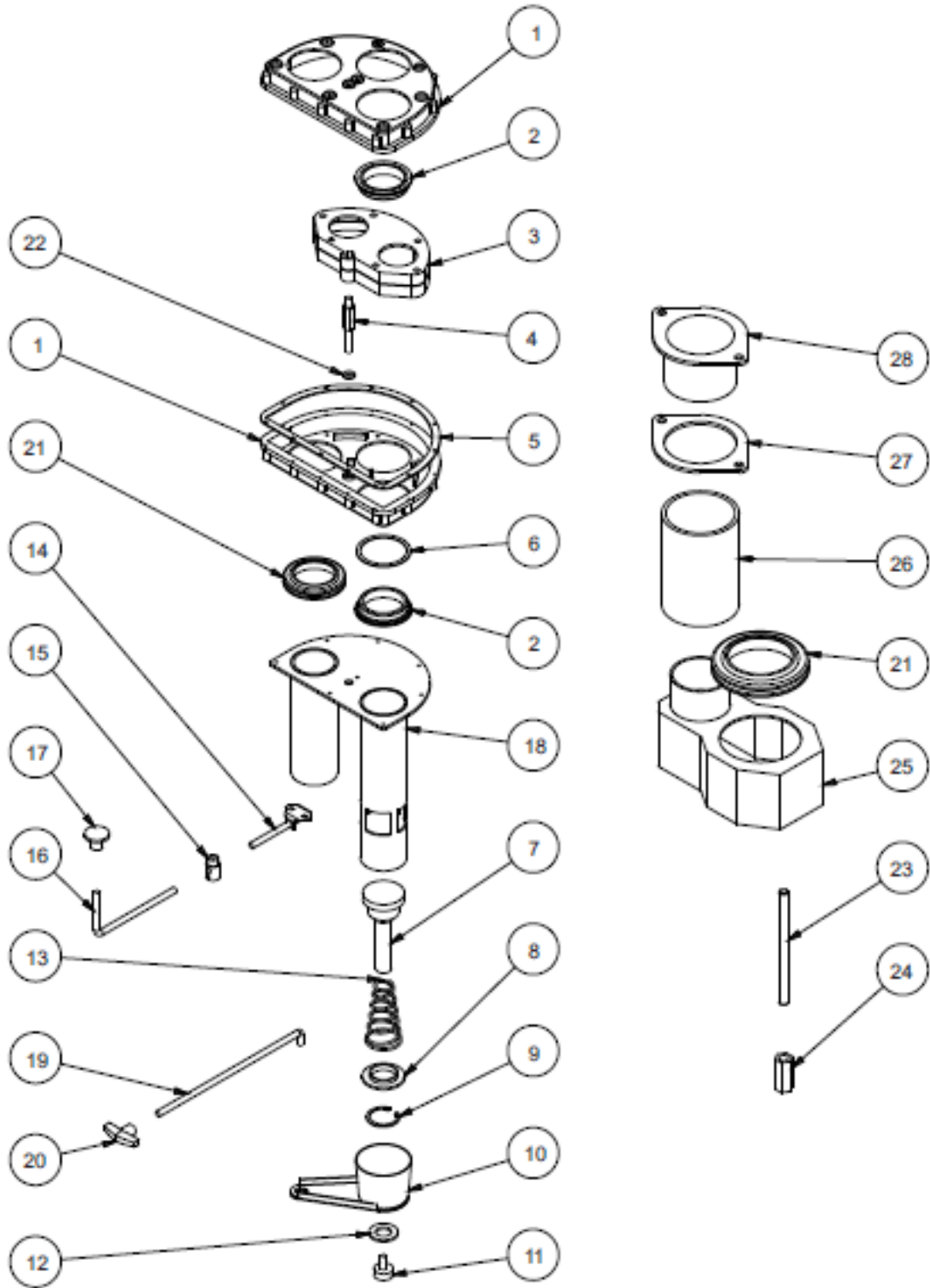
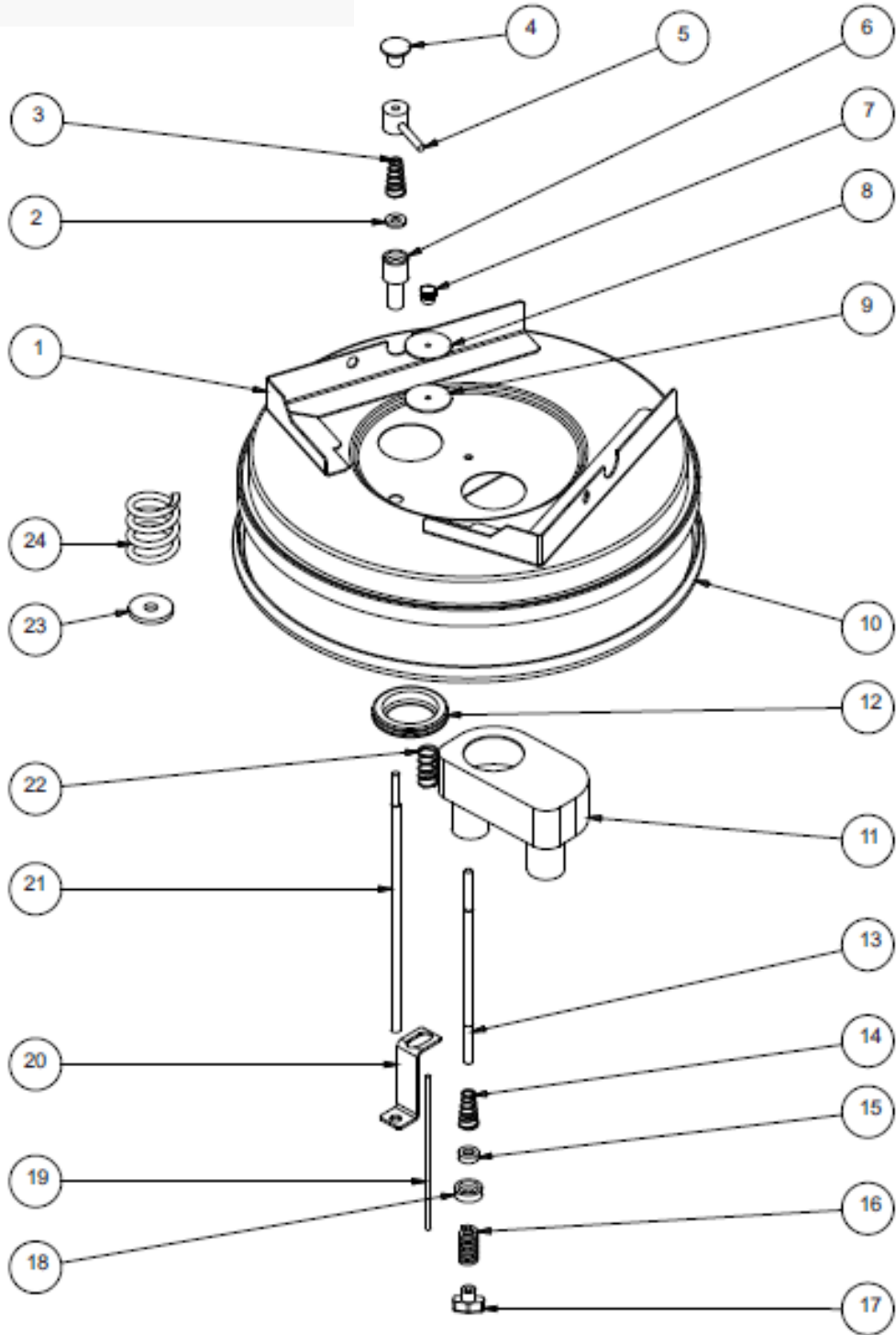


Diagram 2

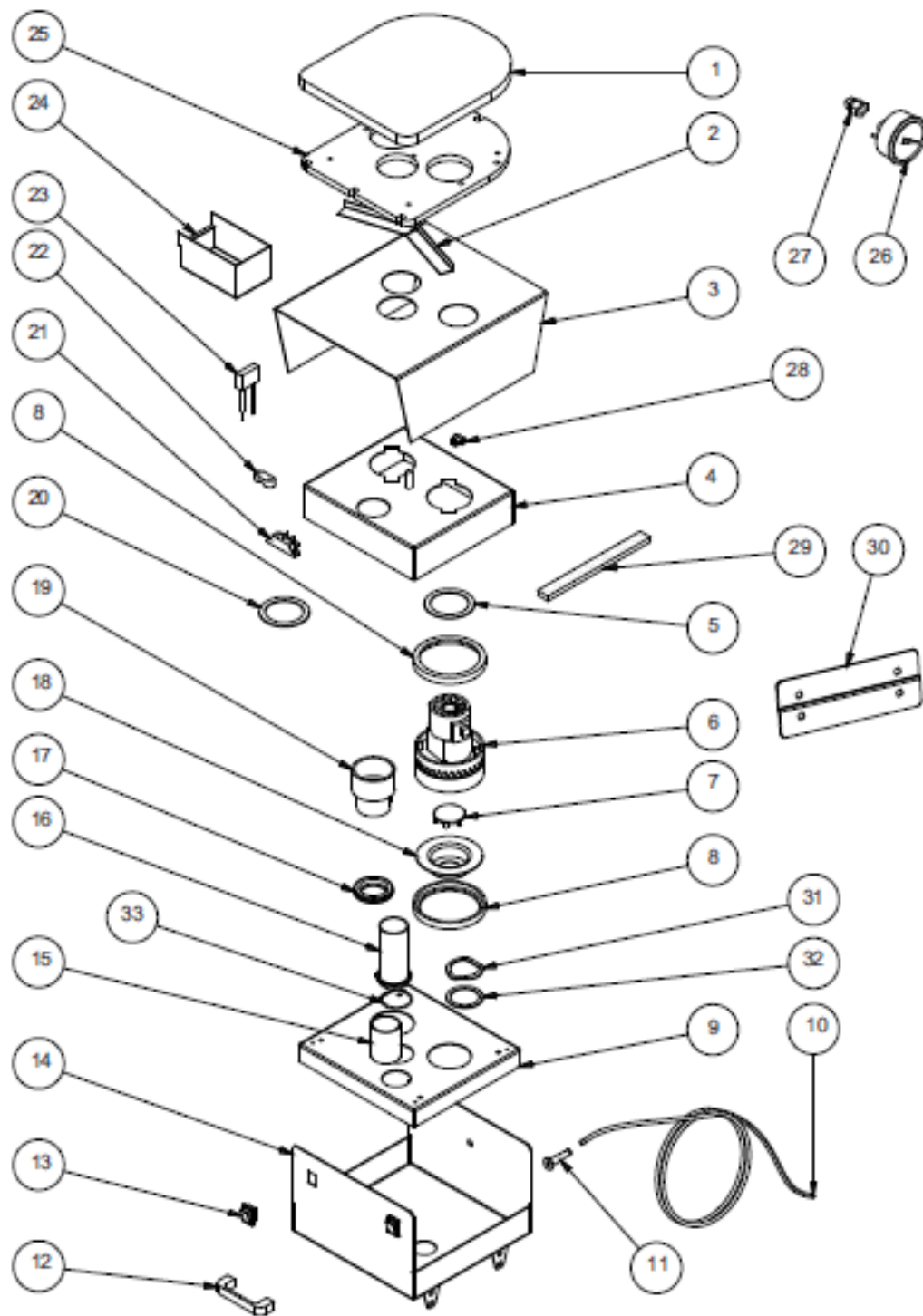
Item	Part Number	Description
1	S82010330	3 Hole Valve Body, Upper
2	S82020000	Ring Valve
3	S82030030	Air Diverter Box
4	S82040030	Hexagonal Bolt
5	S82050009	Gasket
6	S82060000	Compensation Ring
7	S82070000	Nylon Piston
8	S82080000	Aluminum Piston Washer
9	S82090000	Snap Ring
10	S82100000	Block Piston
11	S82110009	Vibration Bumper
12	S82120000	Washer
13	S82130000	Conical Spring
14	S82140000	Lever
15	S82150000	Lever Connector
16	S82160000	Lever
17	S82170000	Knob
18	S82180250	Intake Manifold
19	S82190253	Extension Lever
20	S82200230	Handle
21	S82210009	Guide
22	S82220009	Washer
23	S82230100	Piston Extension
24	S82240000	Connector
25	S82250000	Recovery Box
26	S82260009	Rubber Sleeve
27	S82270009	Flange
28	S82282500	Tube Flange

110 Volt Vacuum Head



Item	Part Number	Description
1	S8401000W	Lid
2	S84020000	Washer
3	S84030000	Conical Spring
4	S82170000	Knob
5	S84050000	Block System
6	S84060000	Guide
7	S84070000	Exhaust Valve Adjustment Knob
8	S84080045	Washer
9	S84090009	Washer
10	S84100000	Gasket
11	S83211T002	Collector, Filter
12	S82210009	Guide
13	S84130370	Filter Support Rod
14	S84140000	Spring
15	S84020000	Spacer
16	S84160000	Spring
17	S84170000	Knob
18	S84180000	Seat Ring
19	S84190000	Valve actuator rod
20	S84200000	Bracket
21	S84210345	Filter Shaker Rod
22	S84220000	Spring
23	S84230000	Washer
24	S84240070	Spring

110 Volt Vacuum Head



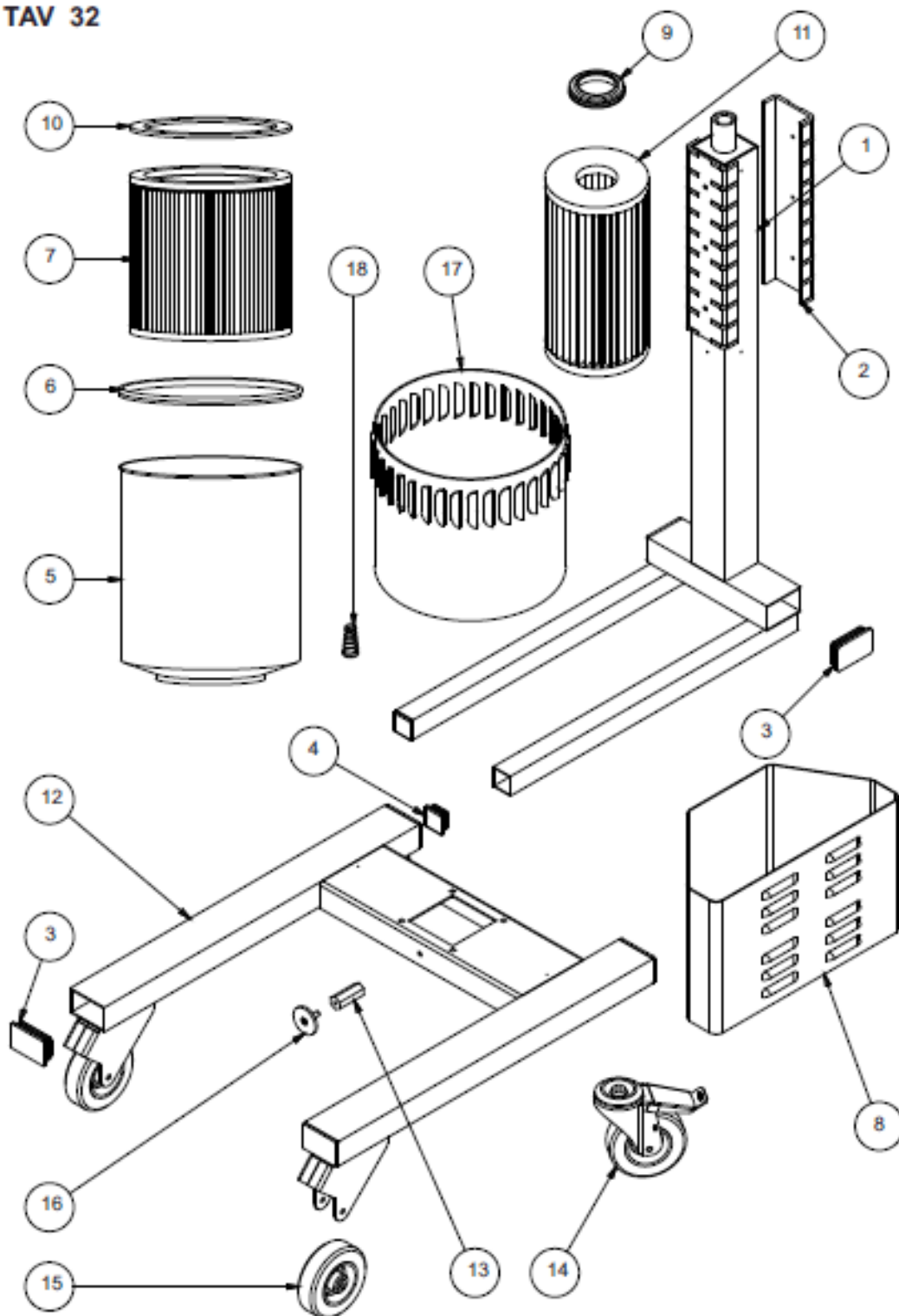
110 Volt Vacuum Head

Diagram 36

Item	Part Number	Description
1	S836010000	Cover, Top
2	S836020000	Air Separator
3	S836031000	Cover, 3 motor
4	S836041000	Motor Support, 3 motor
5	S836050000	Gasket
6	S81119S	Motor 800 watt 110V
	S83891S	Motor 1000 watt 220V
7	S836070000	Valve
8	S836080000	Gasket, Motor
9	S836091000	Conveyor, 3 motor
10	T80070	Power Cord
11	S836110000	Strain Relief
12	S836120000	Handle
13	S836130000	Switch
14	S836141000	Housing
15	S836150070	Tube 70mm
16	S836160160	Tube 160mm
17	S802210009	Guide
18	S836180000	Valve Plate
19	S836190000	Filler Neck
20	S836200000	Gasket, Cooling Fan
21	S836210000	Terminal Block
22	S836220000	Clamp, Cord
23	S836230000	RFI Capacitor
24	S836240000	Drain Box
25	S836251009	Cover
26	S836260000	Vacuum Gauge
27	S836270000	Fitting
28	S836280000	Fitting, Elbow
29	S836290000	Gasket
30	S836300000	High Valve Adapter
31	S802060000	Compensator Ring
32	S836320000	Washer
33	S836330000	O-Ring

110 Volt Vacuum Head and Single Stacked Tanks Frame

TAV 32



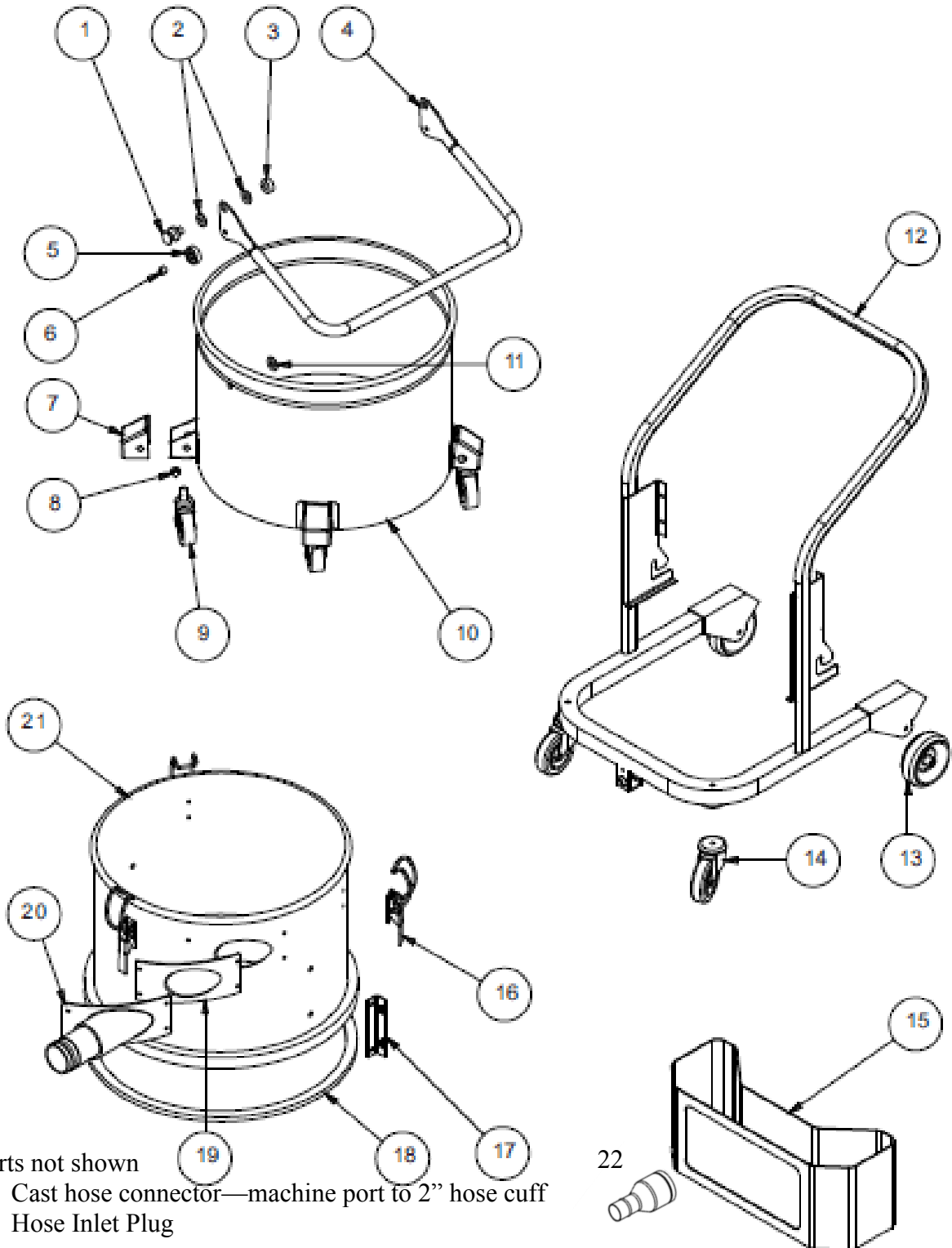
110 Volt Vacuum Head and Single Stacked Tanks Frame

Diagram 32

Item	Part Number	Description
1	S832010000	Internal Column
2	S832020000	Guide Track
3	S832030000	Cap
4	S832040000	Cap
5	S832053580	Cyclone Shield
6	S832060000	Filter Seal
7	S820826	Filter, Main
8	S832080000	Tool Bin, Left Side
8	S832081000	Tool Bin, Right Side
9	S802210040	Guide
10	S832100000	Gasket
11	S8321142PH	HEPA Filter (Requires adaptor S83211M to install)
12	S832120000	Cart Frame
13	S802240000	Connector Nut
14	S832140150	Swivel Caster
15	S832150150	Wheel
16	S832160000	Bin Stop
17	S83217580D	Cyclone Shield
18	S832180000	Spring

Single Stacked Tanks

TAV 37



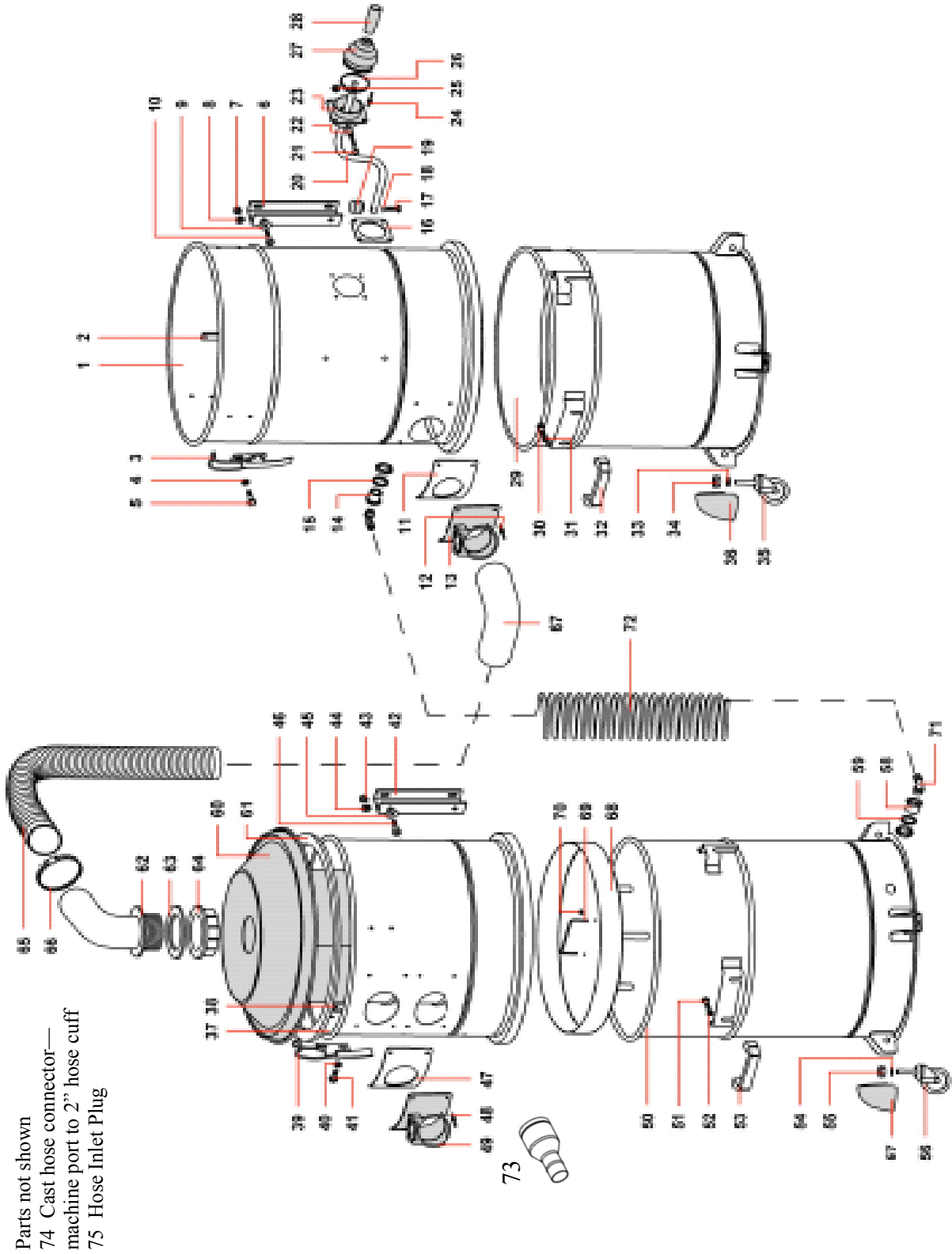
- Parts not shown
23 Cast hose connector—machine port to 2" hose cuff
24 Hose Inlet Plug

Single Stacked Tanks

Diagram 37

Item	Part Number	Description
1	S837010000	Tank Coupling
2	S837020009	Nylon Washer
3	S837030000	Spacer Sleeve
4	S837040000	Bin Release Handle
5	S837050000	Bearing
6	S837060000	Bushing
7	S831040000	Wheel Cover
8	S831030000	Cap Locknut
9	S831050000	Swivel Caster
10	S8371070X0	Collection Bin
11	S837110009	Washer
12	S837121000	Cart
13	S832150150	Wheel
14	S832140150	Swivel Caster
15	S837150000	Tool Storage Bin
16	S808030000	Clamp
17	S837170000	Bracket
18	S804100000	Gasket
19	S808050609	Gasket, Inlet
20	S808130000	Inlet
21	S8372110X0	Tank, Intermediate
22	S86852	Steel Hose Connect 50/70
23	S820823	Cast Hose adaptor
24	S87889	Hose connect Plug

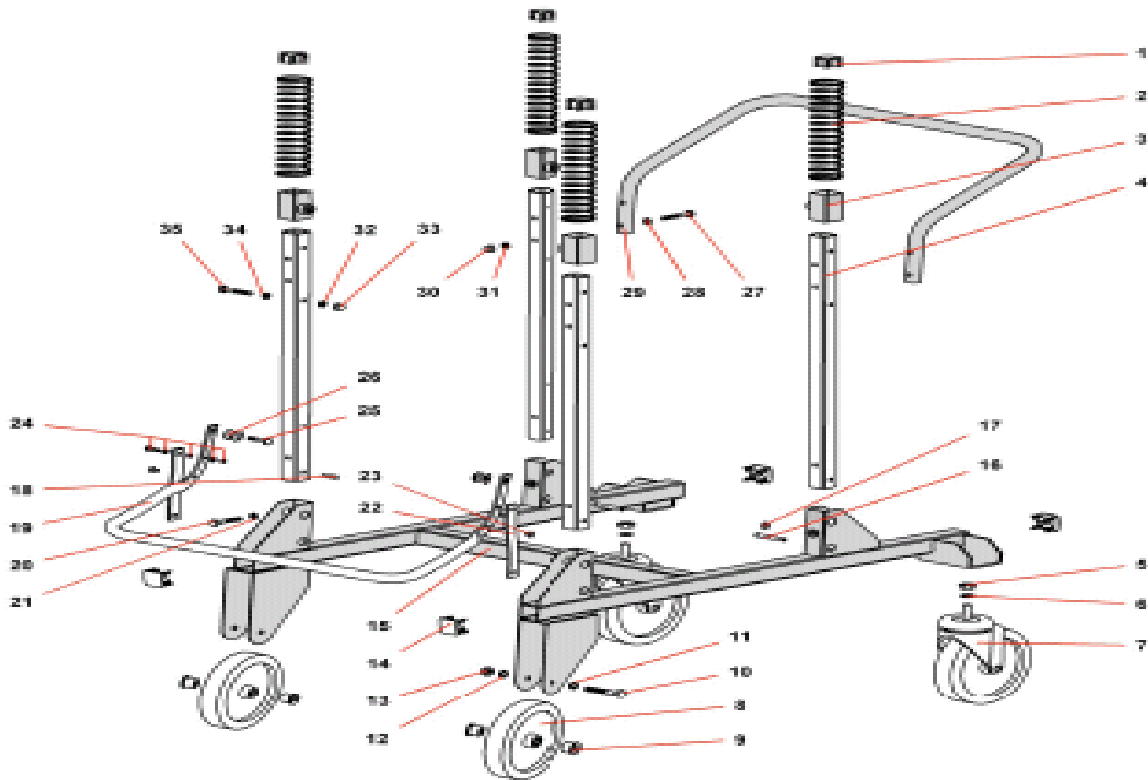
Tandem Tank Assembly



Tandem Tank Assembly

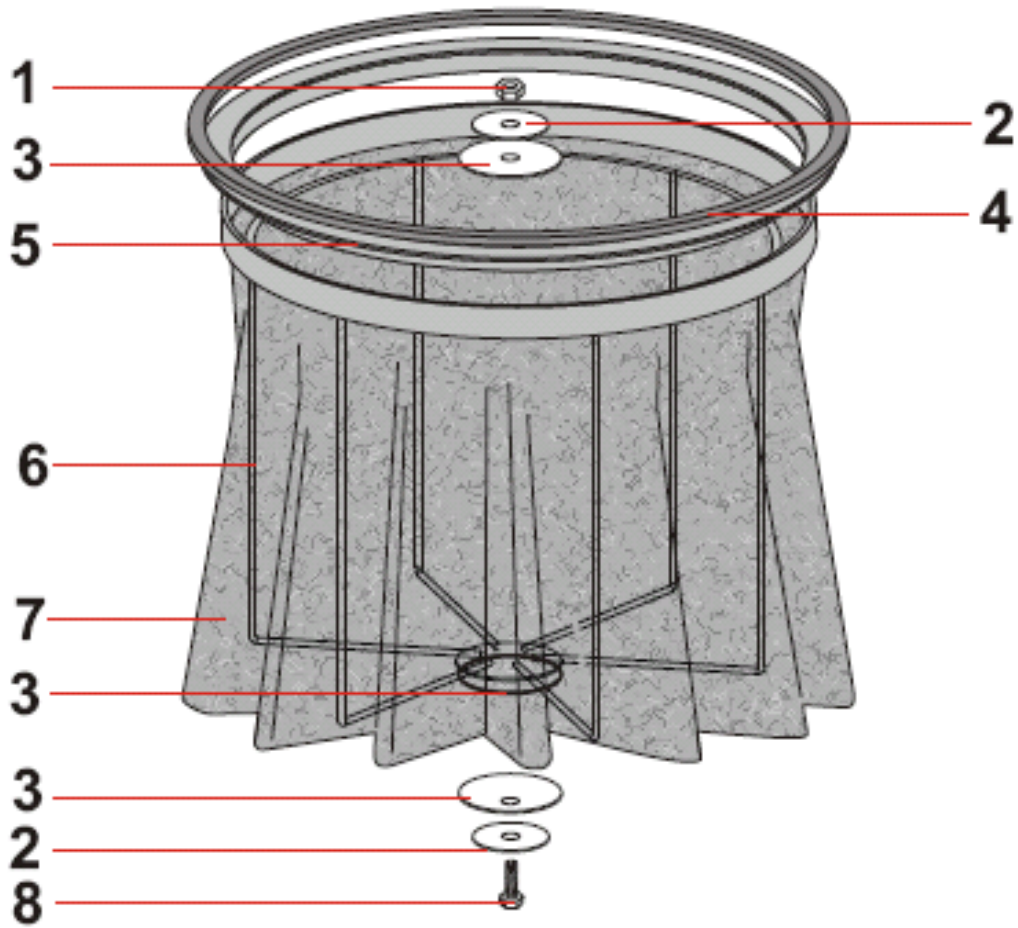
Item:	Part#:	Description:	Qty:	Item:	Part#:	Description:	Qty:
1	S820707G	Tank, Vacuum Chamber	1	41	S82726	Screw M6x12	6
2	S86907	Support Plate	3	42	S86792	Bracket, Tank Support	2
3	S87095	Latch, Tank	3	43	S80130	Cap Nut M8	4
4	S81052	Washer, M6	6	44	S81034	Flat Washer M8	4
5	S82726	Screw, M6x12	6	45	S81744	Bushing 8x32	4
6	S86792	Bracket, Tank Support	2	46	S87136	Screw M8x18	4
7	S80130	Cap Nut M8	4	47	S86870	Gasket, Inlet	1
8	S81034	Washer, M8	4	48	S81302	Rivet 5x19	8
9	S81744	Bushing, M8x32	4	49	S87233	Inlet D.70	2
10	S87136	Screw, M8x16	4	50	S820736	Tank, Separator Bin	1
11	S86870	Gasket, Inlet	1	51	S81950	Screw M8x10	4
12	S81302	Rivet, 5x19	4	52	S81034	Flat Washer M8	4
13	S87233	Inlet, D.70	1	53	S86891	Handle	2
14	S820832	Bulkhead, Elbow	1	54	S82054	Lock Washer M12	4
15	S87097	Washer, Rubber	1	55	S87138	Nut M12	4
16	S87538	Gasket, Shaker	1	56	S87106	Caster	4
17	S81043	Screw, M8x25	1	57	S86801	Cover, Caster	4
18	S87086	Lock Washer, M8	1	58	S820834	Bulkhead Elbow	1
19	S86363	Bumper, Filter Shaker	1	59	S87097	Washer, Rubber	1
20	S87536	Shaker Lever	1	60	S820753	Cover, Pre-Separator	1
21	S87575	Screw, M6x70	1	61	S820749	Gasket, Separator Lid	1
22	S87574	Spacer	1	62	S820768	Elbow D.60	1
23	S87539	Bellows Holder	1	63	S820770	Gasket D.60	1
24	S81302	Rivet 5x19	4	64	S820769	Ring Nut	1
25	S81650	Self-Locking Nut M6	1	65	S87093	Hose D.60	1
26	S83592	Clamp	1	66	S83005	Clamp, Hose	2
27	S87508	Bellows, Shaker	1	67	S820741	Elbow	1
28	S82900	Knob M10x65	1	68	S87041	Grid	1
29	S820737	Tank, Vacuum Collection Bin	1	69	S87396	Handle	1
30	S81950	Screw, M8x10	4	70	S87517	Retainer Ring	2
31	S81034	Washer M8	4	71	S820836	Quick Release, Male	2
32	S86891	Handle	2	71.1	S820835	Quick Release, Female	2
33	S82054	Lock Washer M12	4	71.2	S820833	Nipple, Hose Grip	2
34	S87138	Nut M12	4	71.3	S820837	Coupling	2
35	S87106	Caster	4	72	S820828	Hose, Coil VEK	1
36	S86801	Caster Cover	4	73	S86852	Hose Connector 50/70	1
37	S820710	Tank, Separator	1	74	S820823	Cast adaptor inlet to 2"	1
38	S86907	Support Plate	3	75	S87889	Hose inlet plug	1
39	S87095	Latch, Tank	3				
40	S81052	Flat Washer M6	6				

Tandem Cart Assembly



Item:	Part#:	Description:	Qty:	Item:	Part#:	Description:	Qty:
1	S87294	Tube Cap	4	20	S87227	Screw M8x45	4
2	S86823	Spring, Carriage	4	21	S81034	Flat Washer M8	4
3	S86793	Guide, Shaft Hook	4	22	S86791	Linkage Rod	4
4	S87201	Shaft, Tank Support	4	23	S86786	Shaft Stop	4
5	S82052	Lock Nut M12	2	24	S86787/RIC	Lever Link Rod	4
6	S82054	Lock Washer	2	25	S87140	Screw M8x25	4
7	S87107	Caster D.200	2	26	S86789	Bushing	4
8	S87108	Wheel D.200	2	27	S87141	Screw M8x70	4
9	S87582	Spacer, Wheel	4	28	S81034	Flat Washer M8	4
10	S87144	Screw M10x70	2	29	S86795	Handle	1
11	S81012	Flat Washer M10	2	30	S80130	Cap Nut M8	4
12	S81012	Flat Washer M10	2	31	S81034	Flat Washer M8	4
13	S87145	Lock Nut M10	2	32	S81034	Flat Washer M8	8
14	S86835	Tube Cap	4	33	S80130	Cap Nut M8	8
15	S820716	Frame	1	34	S81034	Flat Washer M8	8
16	S86788	Pin	4	35	S87146	Screw M8x50	8

Filter Assembly



Item:	Part#:	Description:	Qty:
1	S81650	Locknut M6	1
2	S87518/64	Plate	2
3	S87518	Plate	3
4	S87561	Gasket	1
5	S86799	Filter Ring	1
6	S87535	Basket, Filter	1
7	S87023	Cloth, Filter	1
8	S82082	Screw M6x20	1

Warranty Policy

Limited Warranty

IPC Eagle warrants new cleaning equipment against defects in material and workmanship under normal use and service to the original purchaser as detailed below.

10 years

Subject to the conditions stated below, IPC Eagle warrants polyethylene tanks and housings to be free from defects in materials and workmanship for a period of ten years.

3 years

Subject to the conditions stated below, IPC Eagle warrants all automatic scrubber components to be free from defects in materials and workmanship for a 3-year period. Parts replaced or repaired are warranted for the remainder of the original warranty period.

1 year

Subject to the conditions stated below, IPC Eagle warrants all other cleaning equipment components to be free from defects in materials and workmanship for a 1-year period. Parts replaced or repaired are warranted for the remainder of the original warranty period. Batteries are pro-rated for one year.

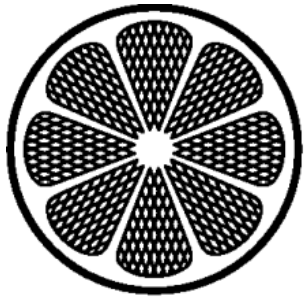
IPC Eagle will furnish and charge for replacement parts, including transportation, to the original owner through an IPC Eagle authorized service center. If the part is returned within 30 days and is found defective, the owner will be credited for the cost of the replacement part including shipping and handling.

Labor charges are covered for one year from the date of purchase if provided by an authorized IPC Eagle service center. Travel is covered for 90 days for battery operated equipment only.

Wear items exempt from warranty include belts, carbon brushes, power cords, wheels, pad drivers, clutch plates, brushes, pads, handle grips, filters, screens, throttle cables, hoses, and squeegees.

This warranty shall not apply to failures caused by misuse or abuse, improper maintenance as stated in the operation manuals, use of unauthorized repair parts, repairs by other than an IPC Eagle authorized service center, and damage in transit.

IPC Eagle disclaims and denies any liability for any direct, indirect, special incidental or consequential damage which may be suffered as a result of sale, delivery, servicing, use, loss of any product, downtime, labor, freight, or other charges not expressly included herein.



IPC Eagle

2955 Lone Oak Drive, #180 Eagan, MN 55121

Toll Free: 800-486-2775

www.ipceagle.com