



Electronic Service Manuals

This electronic document is provided as a service to our customers. We do not create the contents of the information contained in this document. Should you have detailed questions pertaining to the information contained in this document, you may contact Michco, or the manufacturer which provided the original information in this electronic deliverable. Michco's only part in this electronic deliverable was the electronic assembly process. By providing this manual on line we are not guaranteeing parts availability.

You may contact Michco through the following methods:

Phone (517) 484-9312 or (800) 331-3339

2011 N. High St. -- Lansing, Michigan -- 48906

Fax: (517) 484-9836

Email: CustServe@Michco.com

Web site: www.Michco.Com

Parts Web site: www.FloorMachineParts.Com

Order Parts on Line at:

www.FloorMachineParts.Com

Directly to Parts & Service:

By Email: **Shop@Michco.com**

By Fax: (517) 702-2041

By Voice: Use numbers above.

Serving the Cleaning Industry Since 1922

Notice: All copyrighted material remains property of original owners, all trademarks are property of respective owners. Manuals are subject to Manufacturer's reproduction limitations. Originals or reproductions were provided by manufacturers through a request. We make no warranty as to the correctness of information provided in this document and you assume all risk. By placing these manuals on line we are not declaring our corporation to be an manufacturer authorized dealer or provider, please check our web site for authorized manufacturers we represent.

Eagle Power™

Products Group



LOTUS 10 CYLINDRICAL SCRUBBER/ DRYER

ENTER 

PARTS MANUAL



Click on icon to
return to this page.

← Back 1 page

Lotus 10 Cylindrical Scrubber/Dryer

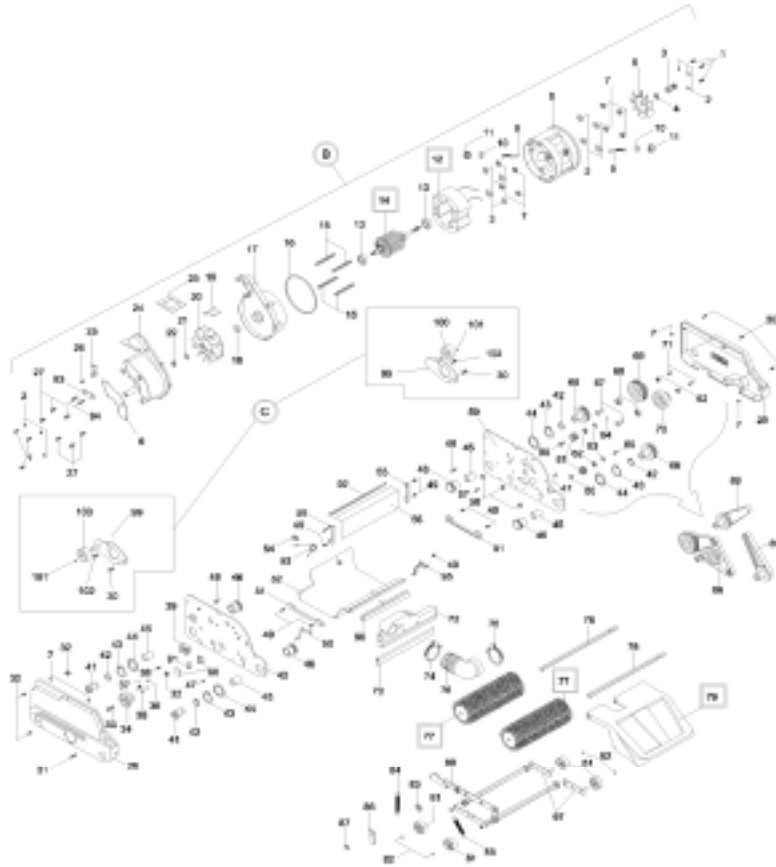
Base Assembly

Handle Assembly



← Back 1 page

LOTUS 10-BASE ASSEMBLY



LOTUS 10-BASE ASSEMBLY

POSITION	PART NUMBER	DESCRIPTION
1	1105514	Screw 5X16
2	1105302	Washer 5x10
3	22502018	Motor shaft pulley
4	1105752	Washer Ø 12 Uni 8841
5	12902001	Cooling fan L 10
6	21602004	Outer motor gasket
7	1105122	M5 nut
8	13802012	Charcoal holder body
9	13802011	Charcoal L 10
10	21602005	Gasket cap
11	13802013	Charcoal holder cap
12	23802000	Stator for L 10 motor, 220 V
12	23802002	Stator for L 10 motor, 110 V
13	1390008	Motor bearing 6201 2RS
14	23802001	Rotor for L 10 motor - 220 V

Next page →



← Back 1 page

LOTUS 10-BASE ASSEMBLY

POSITION	PART NUMBER	DESCRIPTION
14	23802003	Rotor for L 10 motor - 110 V
15	22302003	Pin for the motor tie-rod
16	21602006	Internal motor gasket
17	21202005	Motor lock
18	1160055	Gasket 12x24x7 din 3760
19	21202006	Suction lock
20	12902000	Suction fan L 10
21	1105769	Washer, Ø 6 Uni 8841
22	1105123	M6 nut
23	21602007	Container gasket
24	21202007	Suction pump cover
25	21902003	Suction locking lever
26	1105775	Self tapping screw, 2.9x13
27	1105761	Self tapping screw, 4.8x25
28	21202023	Grey right hand casing
28	21202025	Black right hand casing
28	21202027	Pink right hand casing
28	21202033	Apple green right hand casing
28	21202031	Dark green right hand casing
28	21202029	Light blue right hand casing
29	21202024	Grey left hand casing
29	21202026	Black left hand casing
29	21202028	Pink left hand casing
29	21202034	Apple green left hand casing
29	21202032	Dark green left hand casing
29	21202030	Light blue right hand casing
30	1105500	Screw, 5x12
31	1105763	Screw, 4x16
32	13802007	Core hitch rubber pad
33	1105764	Screw, 5x50
34	13202001	Height adjusting knob
35	21102006	Height adjusting bushing
36	22302033	Pivot
37	22052003	Knob spring, H 22
38	1105776	Self tapping screw, 2.9x16
39	1180011	Terminal board
40	22622000	Aluminum right hand side panel
41	21102003	Bushing for brush pivot

Next page →



← Back 1 page

LOTUS 10-BASE ASSEMBLY

POSITION	PART NUMBER	DESCRIPTION
42	1105401	Ring WR 20 A
43	1105419	Outer snap ring, Ø 30
44	1105771	Belleville washer, Ø 30
45	21102004	Sintered bushing
46	21102005	Bushing for side panel
47	1105773	Dowel, 5x10
48	22302004	Container support pivot
49	1105759	Screw, 4x10
50	22602005	Right curved sheet metal panel support
51	22602006	Bottom sheet metal panel support
52	22622003	Bottom stainless steel sheet
53	22052002	Spring for the suction tank
54	22302005	Pivot for the suction tank spring
55	22602004	Rear sheet metal panel support
56	22622002	Rear sheet metal panel
57	1105767	Screw, 5x10
58	21652000	Fixing nut
59	22622001	Aluminum left hand side panel
60	22302006	Tightening pulley pin
61	22502019	Belt tightening pulley
62	1390027	Bearing, 625 2Z
63	1105411	Outer snap ring, Ø 17
64	1105757	Outer snap ring, Ø 5
65	1105777	Screw, 5x20
66	22502015	Pulley
67	21102007	Pulley spacer
68	1390026	Bearing, 629 2RS
69	22502016	Striped big pulley
70	22502017	Smooth small pulley
71	1105758	Screw, 5x40
72	21202015	Suction fan
73	21602003	Suction system rubber pad
74	1500010	Suction system clamp, 33-53 B3
75	1500011	Sucking system clamp, 48-68 B6
76	22002001	Rubber sleeve
77	13502000	Brush 012 Grey
77	13502001	Brush 020 Black
78	22302007	Brush bearing pivot

Next page →



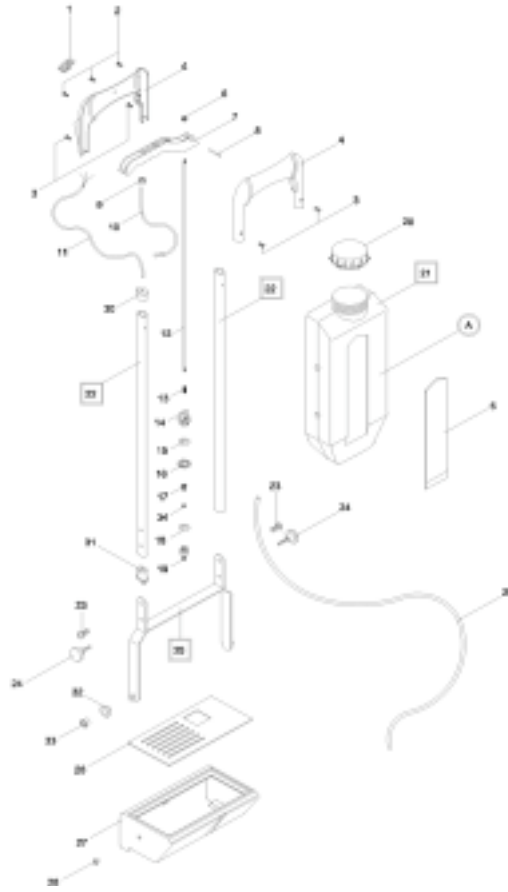
← Back 1 page

LOTUS 10-BASE ASSEMBLY		
POSITION	PART NUMBER	DESCRIPTION
79	21202020	Bonnet -White-
79	21202021	Bonnet -Grey-
79	21202022	Bonnet -Red-
80	22702005	Trolley
81	22502030	Wheel Ø 40
82	1105768	Outer snap ring, Ø 7
83	21102008	Plastic hexagon bushing
84	22052004	Trolley release spring
85	22052005	Trolley support spring
86	21902000	Handle release lever
87	1105766	Ø 10 snap ring
88	13302001	Striped belt
89	13302002	Toothed belt POLY V 150 5J
90	13802010	Fusebox
91	13802002	4 A Fuse
92	23102002	Protection kit for the rear panel
93	21202008	Suction system locking lever reinforcement
94	1105775	Self tapping screw, 2.9x13
95	22602007	Left curved sheet metal panel support
96	21202002	Water diffusor
97	21902011	Connecting rod
98	22302006	Pivot
99	22602021	Wheels support
100	1250040	Wheel 75 - M - G
101	1105409	Outer snap ring, Ø 8
102	1105708	Screw, 4x12
B	23102005	COMPLETE 220V MOTOR
B	23102006	COMPLETE 110V MOTOR
C	23102097	DRIVE WHEEL KIT



Back 1 page

LOTUS 10-HANDLE ASSEMBLY



LOTUS 10-HANDLE ASSEMBLY

POSITION	PART NUMBER	DESCRIPTION
1	1380066	Bipolar switch
2	1105756	Self tapping screw 3,9 x 22
3	1105356	Self tapping screw 3,5 x 9.5
4	22002000	Handle
5	69112000	L 10 tank label
6	21302001	Nut for the tank dipstick
7	21902002	Water control lever
8	22302002	Pin for handle, Ø 4 x 28
9	13802000	Core hitch
10	21802001	Power supply cable with plug
11	21802002	Power supply cable
12	21002001	Water control rod
13	22052001	Water control spring
14	22552001	Pipe fitting for tank
15	1160006	OR 119 Gasket

Next page



← Back 1 page

LOTUS 10-HANDLE ASSEMBLY		
POSITION	PART NUMBER	DESCRIPTION
16	21302002	Tank brass dowel
17	22302001	Sealing pivot
18	1160007	OR 3043 Gasket
19	22552002	Rubber bearer
20	21202003	Tank cap
21	21202000	White tank L 10
21	21202001	Black tank L 10
22	22702001	Black tube for handle
22	22702002	Gray tube for handle
23	1105234	Screw TBCE 6 x 10
24	1320005	Handwheel Ø 30 M6x10
25	22602002	Black handle support
25	22602003	Grey handle support
26	21202017	Water container grill
27	21202016	Water container
28	21202004	Container cap
29	25002001	Water hose L 10
30	22702003	Top cap for the core hitch
31	22702004	Core hitch cap
32	21102001	Handle support bushing
33	21102002	Hex. handle support bushing
34	21602014	Gasket
A	23102003	COMPLETE WHITE TANK ASSEMBLY
A	23102004	COMPLETE BLACK TANK ASSEMBLY



Warranty Policy

Limited Warranty

Eagle Power Products (EPP) warrants new cleaning equipment against defects in material and workmanship under normal use and service to the original purchaser as detailed below.

10 Years

Subject to the conditions stated below, EPP warrants polyethylene tanks and housings to be free from defects in materials and workmanship for a period of ten years.

3 Years

Subject to the conditions stated below, EPP warrants all automatic scrubber components to be free from defects in materials and workmanship for a 3-year period. Parts replaced or repaired are warranted for the remainder of the original warranty period.

1 Year

Subject to the conditions stated below, EPP warrants all other cleaning equipment components to be free from defects in materials and workmanship for a 1-year period. Parts replaced or repaired are warranted for the remainder of the original warranty period. Batteries are prorated for one year.

EPP will furnish and charge for replacement parts, including transportation, to the original owner through an EPP authorized service center. If the part is returned within 30 days and is found defective, the owner will be credited for the cost of the replacement part including shipping and handling.

Labor charges are covered for one year from the date of purchase if provided by an authorized EPP service center. Travel is covered for 90 days for battery operated equipment only.

Wear items exempt from warranty include belts, carbon brushes, power cords, wheels, pad drivers, clutch plates, brushes, pads, handle grips, filters, screens, throttle cables, and squeegees.

This warranty shall not apply to failures caused by misuse or abuse, improper maintenance as stated in the operation manuals, use of unauthorized repair parts, repairs by other than an EPP authorized service center, and damage in transit.

EPP disclaims and denies any liability for any direct, indirect, special incidental or consequential damage which may be suffered as a result of sale, delivery, servicing, use, loss of any product, downtime, labor, freight, or other charges not expressly included herein.

Date Purchased: _____

Serial Number: _____

Model Number: _____

Please be sure to record this information. This information will be necessary for future warranty claims.



1174 Northland Drive Mendota Heights, MN 55120
651.686.5399 Fax 651.686.5695
www.eaglepower.com

Eagle Power Products Sales and Service Provided by: