



Electronic Service Manuals

This electronic document is provided as a service to our customers. We do not create the contents of the information contained in this document. Should you have detailed questions pertaining to the information contained in this document, you may contact Michco, or the manufacturer which provided the original information in this electronic deliverable. Michco's only part in this electronic deliverable was the electronic assembly process. By providing this manual on line we are not guaranteeing parts availability.

You may contact Michco through the following methods:

Phone (517) 484-9312 or (800) 331-3339

2011 N. High St. -- Lansing, Michigan -- 48906

Fax: (517) 484-9836

Email: CustServe@Michco.com

Web site: www.Michco.Com

Parts Web site: www.FloorMachineParts.Com

Order Parts on Line at:

www.FloorMachineParts.Com

Directly to Parts & Service:

By Email: **Shop@Michco.com**

By Fax: (517) 702-2041

By Voice: Use numbers above.

Serving the Cleaning Industry Since 1922

Notice: All copyrighted material remains property of original owners, all trademarks are property of respective owners. Manuals are subject to Manufacturer's reproduction limitations. Originals or reproductions were provided by manufacturers through a request. We make no warranty as to the correctness of information provided in this document and you assume all risk. By placing these manuals on line we are not declaring our corporation to be an manufacturer authorized dealer or provider, please check our web site for authorized manufacturers we represent.

Eagle Power™

Products Group



350 AUTOMATIC SCRUBBER

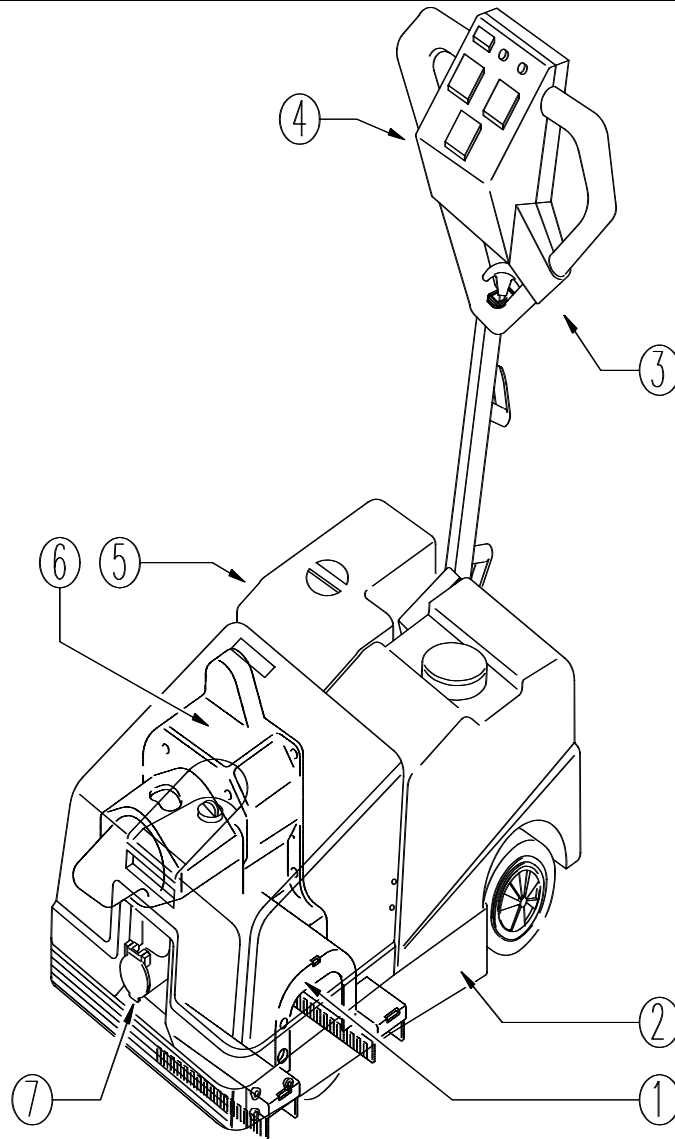
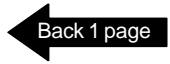
ENTER 

PARTS MANUAL

350 Automatic Scrubber

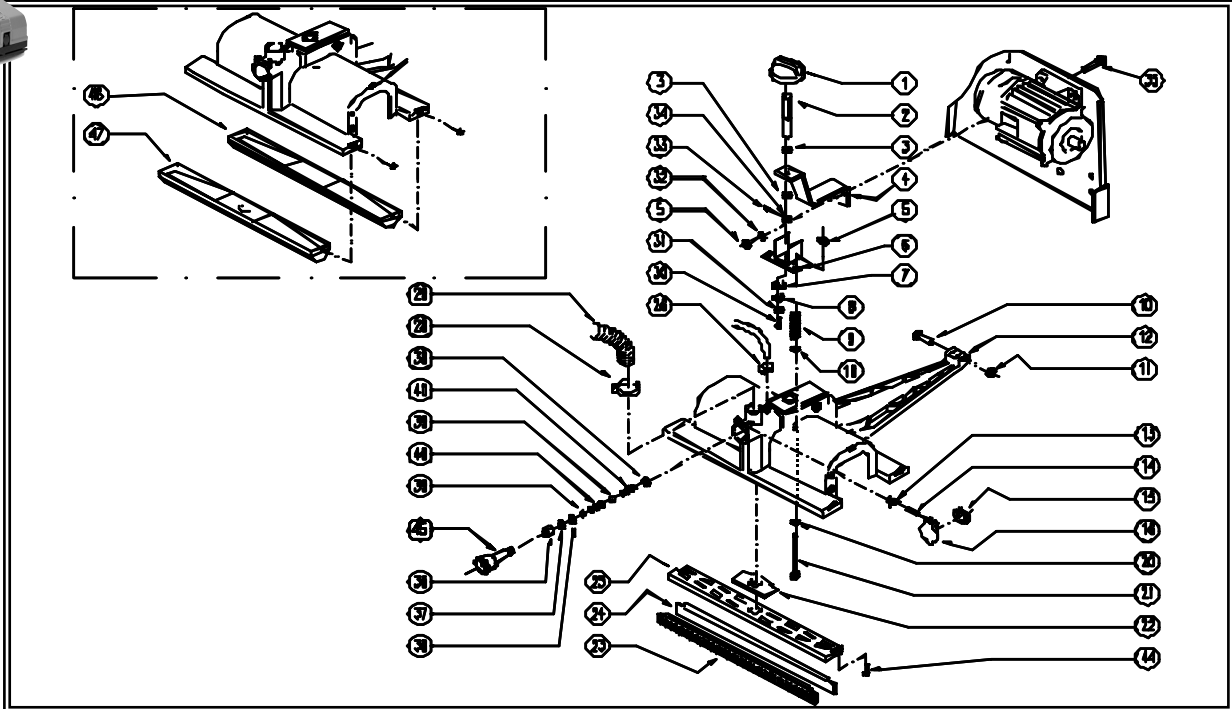


Click on icon to return to this page.



| REF. | CODE | DESCRIPTION |
|------|-------------------------|----------------------|
| 1 | PL1090 | SQUEEGEE |
| 2 | PL1086U | FRAME-MOTOR |
| 3 | PL1087 | HANDGRIP UNIT |
| 4 | PL1088U | CONTROL PANEL |
| 5 | PL1089U | TANK |
| 6 | PL1091U | SUCTION |
| 7 | PL1092U | HYDRAULIC UNIT |
| | PL1275U | EXTERNAL PARTS |
| | WD27008 | ELEC. WIRING DIAGRAM |
| | | |
| | | |
| | | |
| | | |

350 Automatic Scrubber CODE: pl1090 ad SN from 9916!



350 Automatic Scrubber CODE: pl1090 ad SN from 99165

| REF. | CODE | DESCRIPTION | QTY |
|------|---------|-------------|-----|
| 1 | SL2002E | HANDGRIP | 1 |
| 2 | SL0720E | ROD | 1 |
| 3 | SL13052 | SPRING | 2 |
| 4 | SL09607 | SUPPORT | 1 |
| 5 | SL05011 | NUT | 4 |
| 6 | SL0984E | BRACKET | 1 |
| 7 | SL0602E | WASHER | 1 |
| 8 | SL06064 | WASHER | 1 |
| 9 | SL13104 | SPRING | 2 |
| 10 | SL0415E | SCREW | 1 |
| 11 | SL0503E | NUT | 1 |
| 12 | SL17252 | SUPPORT | 1 |
| 13 | SL13057 | SPRING | 1 |
| 14 | SL07204 | PIN / PLUG | 1 |
| 15 | SL0319E | GASKET | 1 |
| 16 | SL17254 | LID | 1 |
| 18 | SL0606C | WASHER | 2 |
| 20 | SL0311E | GASKET | 2 |
| 21 | SL04247 | SCREW | 2 |
| 22 | SL03351 | GASKET | 2 |
| 23 | SL03194 | BLADE | 2 |
| 24 | SL0319E | BLADE | 2 |
| 25 | SL1725E | BODY | 2 |
| 26 | SL14021 | CLAMP | 1 |
| 28 | SL1406E | CLAMP | 1 |



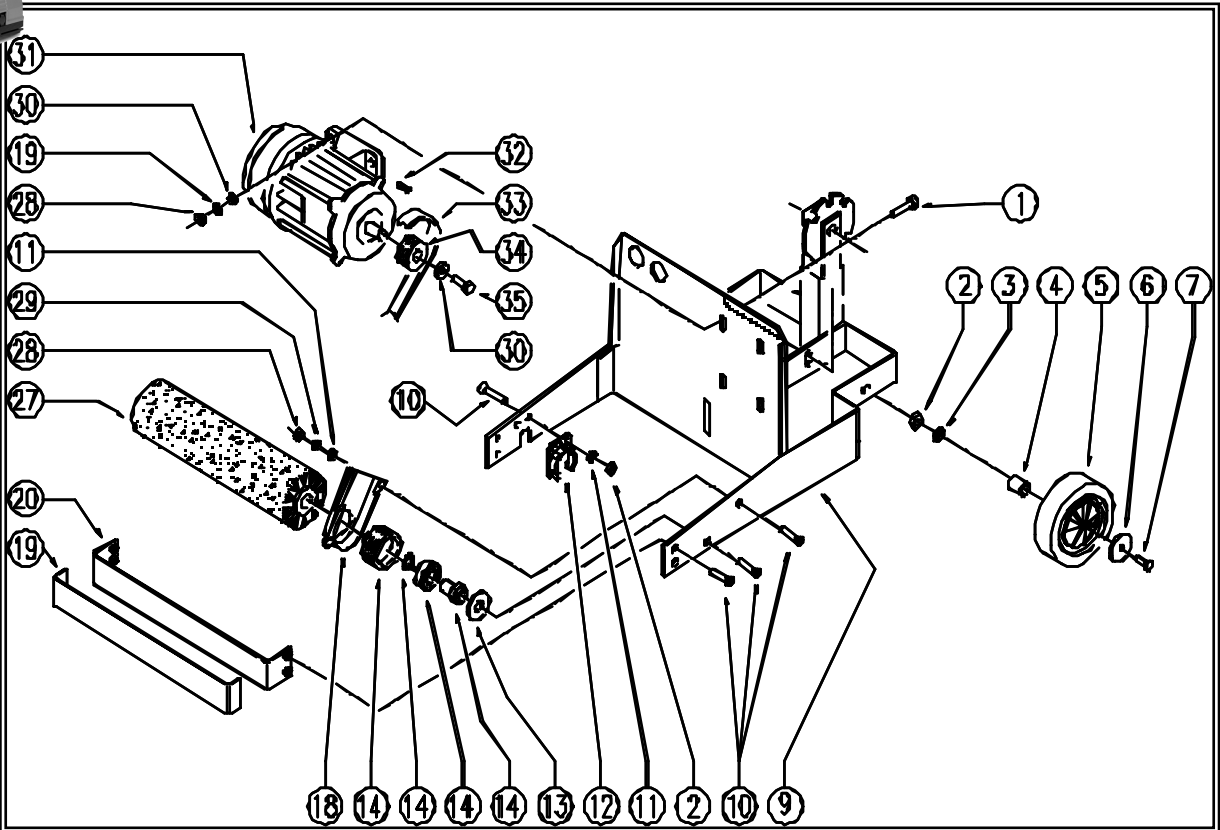
← Back 1 page

350 Automatic Scrubber CODE: pl1090 ad SN from 99165

| REF. | CODE | DESCRIPTION | QTY |
|------|---------|--------------------|-----|
| 29 | SL19083 | HOSE | 1 |
| 30 | SL04323 | SCREW | 1 |
| 31 | SL06031 | WASHER | 1 |
| 32 | SL06022 | WASHER | 2 |
| 33 | SL11054 | SPLIT PIN | 1 |
| 34 | SL05056 | NUT | 1 |
| 35 | SL04159 | SCREW | 2 |
| 36 | SL07307 | BUSHING FOR O-RING | 1 |
| 37 | SL03200 | GASKET | 1 |
| 38 | SL03199 | GASKET | 2 |
| 39 | SL14152 | BALL | 2 |
| 40 | SL13077 | SPRING | 1 |
| 41 | SL13059 | SPRING | 1 |
| 44 | SL04065 | SCREW | 4 |
| 45 | SL09820 | CAP | 1 |
| 46 | SL17344 | SQUEEGEE | 1 |
| 47 | SL17345 | SQUEEGEE | 1 |



350 Automatic Scrubber CODE: pl1086U ab SN from 98L001



350 Automatic Scrubber CODE: pl1086U ab SN from 98L001

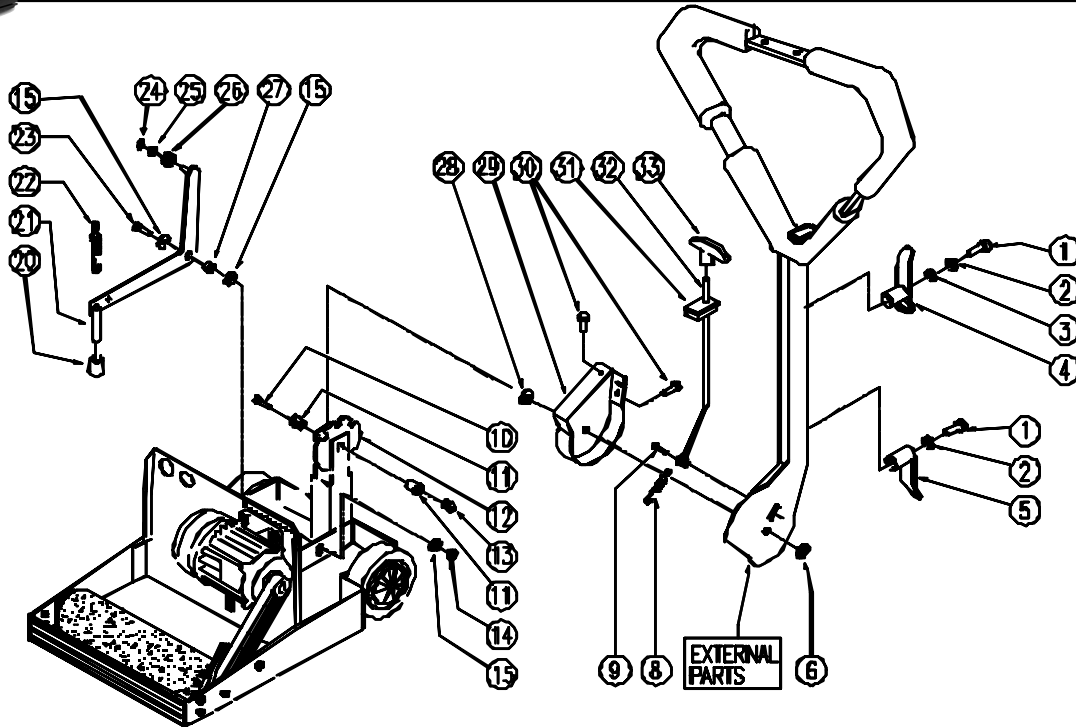
| REF. | CODE | DESCRIPTION | QTY |
|------|-----------|---------------------|-----|
| 1 | SL04159 | SCREW | 4 |
| 2 | SL05039 | NUT | 3 |
| 3 | SL06003 | WASHER | 2 |
| 4 | SL07195 | BEARING | 2 |
| 5 | SL08025 | WHEEL / SMALL WHEEL | 2 |
| 6 | SL06017 | WASHER | 2 |
| 7 | SL04217 | SCREW | 2 |
| 9 | SL09619 | BASEMENT | 1 |
| 10 | SL04221 | SCREW | 9 |
| 11 | SL06022 | WASHER | 4 |
| 12 | SL17257 | SUPPORT | 1 |
| 13 | SL17268 | DISC | 1 |
| 14 | SL17256 | PULLEY | 1 |
| 18 | SL17258 | CASE | 1 |
| 19 | SL03198 | BUMPER EDGE | 1 |
| 20 | SL09602 | BUMPER | 1 |
| 27 | AL04013 | ROLLER | 1 |
| 28 | SL05017 | NUT | 1 |
| 29 | SL06023 | WASHER | 6 |
| 30 | SL06039 | WASHER | 5 |
| 31 | MP02402-U | MOTOR | 1 |
| 32 | SL11099 | TANG / TONGUE | 1 |



← Back 1 page

| 350 Automatic Scrubber CODE: pl1086U ab SN from 98L001 | | | |
|---|-------------|--------------------|------------|
| REF. | CODE | DESCRIPTION | QTY |
| 33 | SL16019 | BELT | 1 |
| 34 | SL07160 | PULLEY | 1 |
| 35 | SL04032 | SCREW | 1 |

350 Automatic Scrubber CODE: pl1087 aa SN from 98L000



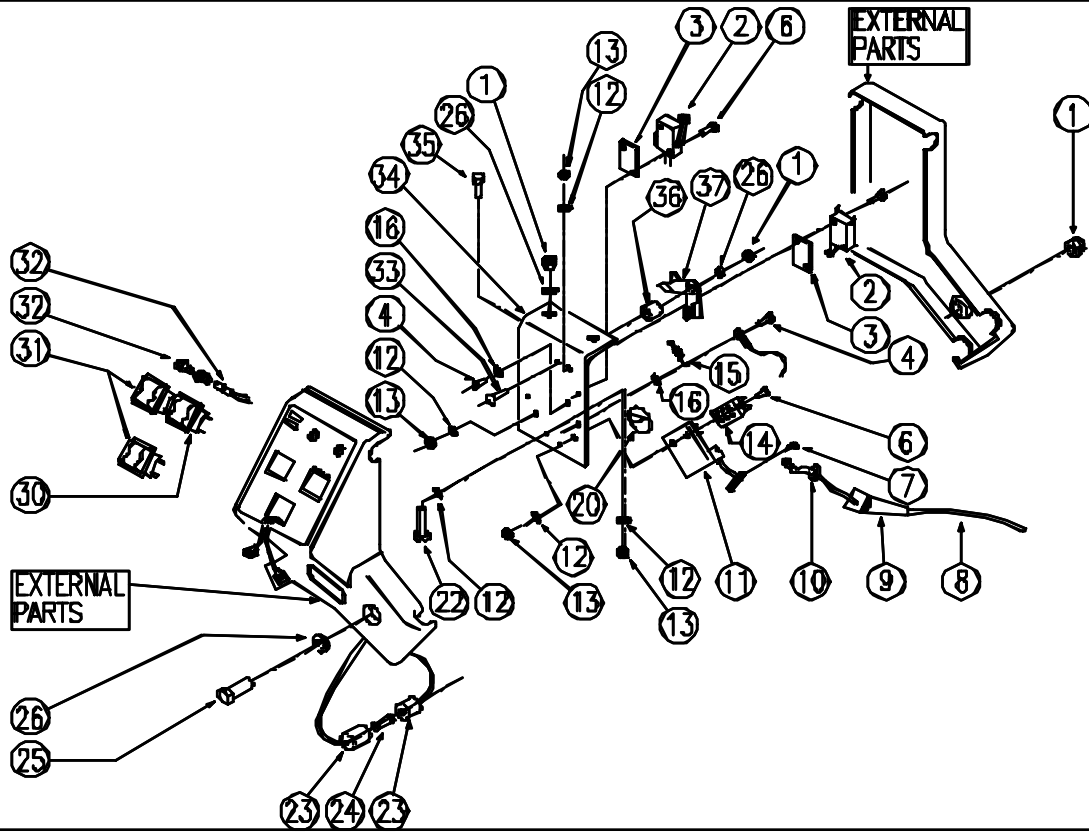
| REF | CODE | DESCRIPTION | QTY |
|-----|---------|----------------|-----|
| 1 | SL04167 | SCREW | 2 |
| 2 | SL06003 | WASHER | 3 |
| 3 | SL13053 | SPRING | 1 |
| 4 | SL17267 | CABLE WINDER | 1 |
| 5 | SL17174 | CABLE WINDER | 1 |
| 6 | SL06061 | WASHER | 1 |
| 8 | SL13013 | SPRING | 1 |
| 9 | SL04192 | SCREW | 1 |
| 10 | SL04220 | SCREW | 1 |
| 11 | SL07200 | BUSHING / BUSH | 2 |
| 12 | SL09619 | BASEMENT | 1 |
| 13 | SL05011 | NUT | 5 |
| 14 | SL05039 | NUT | 1 |
| 15 | SL06025 | WASHER | 3 |
| 20 | SL20016 | FOOT / PIN | 1 |
| 21 | SL09605 | LEVER | 1 |
| 22 | SL13055 | SPRING | 1 |
| 23 | SL04145 | SCREW | 1 |
| 24 | SL11045 | SEEGER | 1 |
| 25 | SL06022 | WASHER | 1 |
| 26 | SL07213 | SMALL WHEEL | 1 |
| 27 | SL07063 | BUSHING / BUSH | 1 |
| 28 | SL06027 | WASHER | 1 |
| 29 | SL17266 | LID | 1 |
| 30 | SL04079 | SCREW | 2 |



← Back 1 page

| REF | CODE | DESCRIPTION | QTY |
|-----|---------|-------------|-----|
| 1 | SL04167 | SCREW | 2 |
| 31 | SL1411€ | TERMINAL | 1 |
| 32 | SL0961C | TIE ROD | 1 |
| 33 | SL2002€ | HANDGRIP | 1 |

350 Automatic Scrubber CODE: pl1088 aa SN from 98L000



350 Automatic Scrubber CODE: pl1088 aa SN from 98L000

| REF | CODE | DESCRIPTION | QTY |
|-----|---------|-----------------------|-----|
| 1 | SL05011 | NUT | 4 |
| 2 | SL23021 | MICROSWITCH | 2 |
| 3 | SL03260 | PLAQUE | 2 |
| 4 | SL04079 | SCREW | 2 |
| 6 | SL04016 | SCREW | 6 |
| 7 | SL07001 | SCREW | 2 |
| 8 | SL23847 | CABLE | 1 |
| 9 | SL23044 | FAIRLEAD | 1 |
| 10 | SL06029 | WASHER | 1 |
| 11 | SL23080 | TERMINAL BOARD HOLDER | 1 |
| 12 | SL06024 | WASHER | 8 |
| 13 | SL05009 | NUT | 7 |
| 14 | SL23078 | TERMINAL BOARD | 1 |
| 15 | SL13044 | SPRING | 1 |
| 16 | SL06021 | WASHER | 2 |
| 20 | SL25185 | ADESIVE LABEL | 1 |
| 22 | SL04122 | SCREW | 1 |
| 23 | SL23947 | FUSE CARRIER | 1 |
| 24 | SL23949 | FUSE | 1 |
| 25 | SL04073 | SCREW | 2 |
| 26 | SL06004 | WASHER | 5 |
| 30 | SL23572 | SWITCH | 1 |
| 31 | SL23573 | SWITCH | 2 |

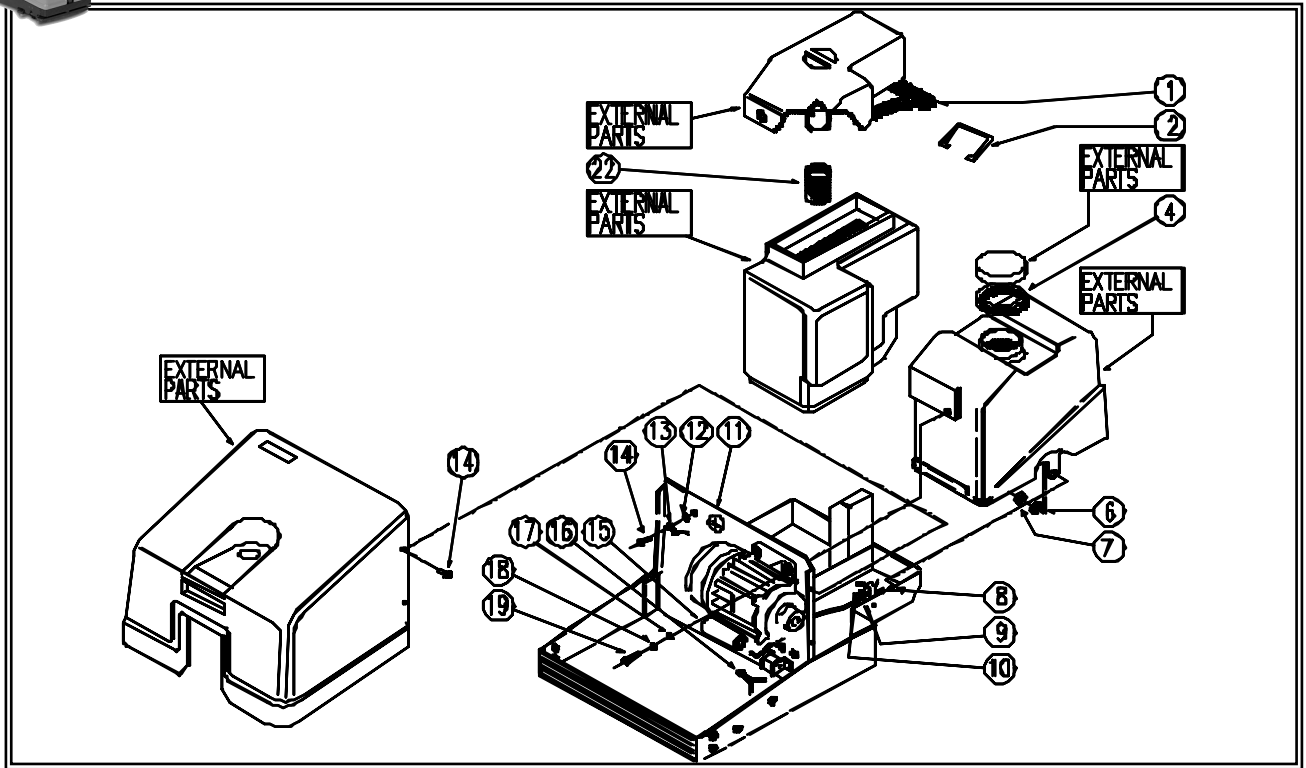


← Back 1 page

350 Automatic Scrubber CODE: pl1088 aa SN from 98L000

| REF | CODE | DESCRIPTION | QTY |
|------------|-------------|--------------------|------------|
| 32 | SL23574 | PILOT LIGHT | 2 |
| 33 | SL04161 | SCREW | 1 |
| 34 | SL09490 | SHEET PLATE | 1 |
| 35 | SL04010 | SCREW | 2 |
| 36 | SL07169 | BUSHING / BUSH | 1 |
| 37 | SL17173 | LEVER | 1 |

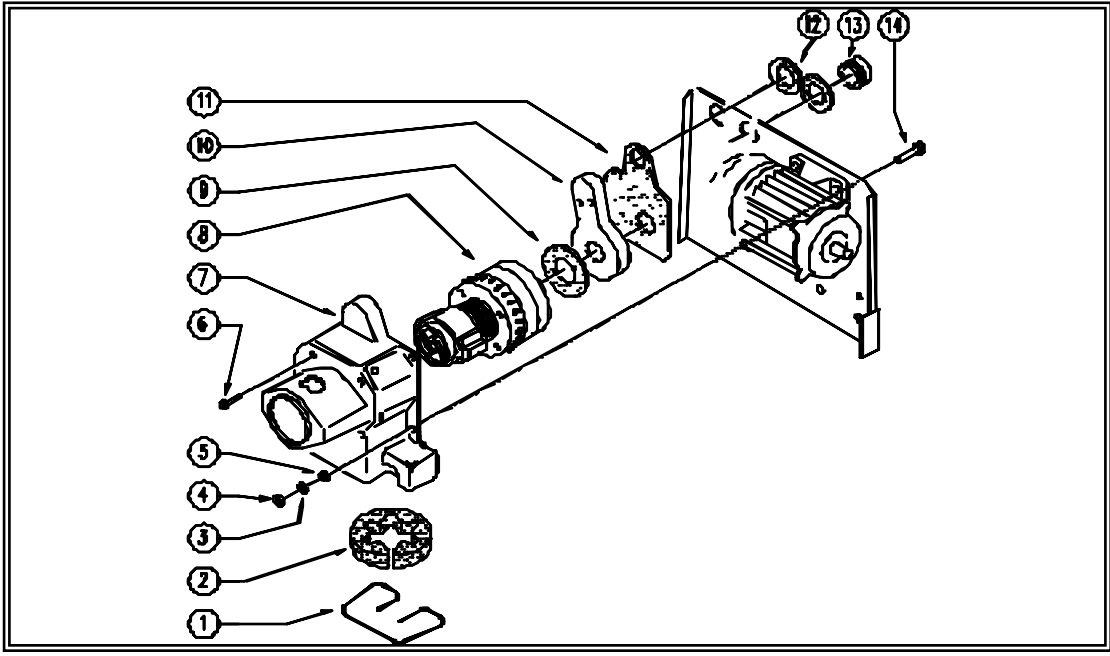
350 Automatic Scrubber CODE: pl1089U aa SN from 98L000



| REF. | CODE | DESCRIPTION | QTY |
|------|-----------------------|---------------|-----|
| 1 | SL17259- t | GASKET | 1 |
| 2 | SL09606 | HANDLE | 1 |
| 4 | SL03280 | GASKET | 1 |
| 6 | SL06039 | WASHER | 3 |
| 7 | SL05011 | NUT | 2 |
| 8 | SL14146 | DUCT LOCK | 1 |
| 9 | SL14156 | RIVET | 1 |
| 10 | SL06032 | WASHER | 1 |
| 11 | SL25185 | ADESIVE LABEL | 1 |
| 12 | SL06021 | WASHER | 1 |
| 13 | SL23855-2L | WIRING | 1 |
| 14 | SL04079 | SCREW | 5 |
| 15 | SL23639 | CAPACITOR | 1 |
| 16 | SL23367 | GUARD | 1 |
| 17 | SL06039 | WASHER | 3 |
| 18 | SL06023 | WASHER | 2 |
| 19 | SL04180 | SCREW | 2 |
| 22 | SL18334 | FILTER | 1 |



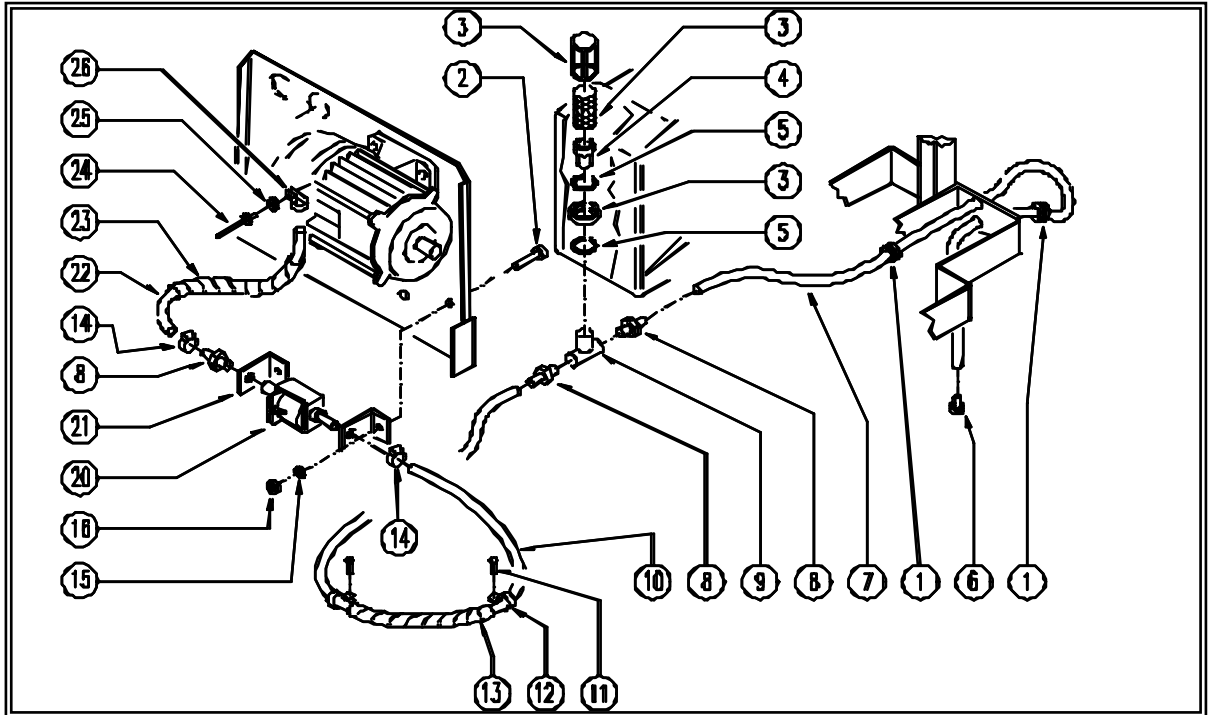
350 Automatic Scrubber CODE: pl1091U ac SN from 98L01



| REF | CODE | DESCRIPTION | QTY |
|-----|-----------|------------------|-----|
| 1 | SL13099 | SPRING | 1 |
| 2 | SL03192 | SILENCER | 1 |
| 3 | SL06023 | WASHER | 4 |
| 4 | SL05017 | NUT | 4 |
| 5 | SL06022 | WASHER | 4 |
| 6 | SL04223 | SCREW | 4 |
| 7 | SL17251 | LID | 1 |
| 8 | MP02307-L | MOTOR | 1 |
| 9 | SL03033 | GASKET | 1 |
| 10 | SL17250 | SUCTION CONVEYOR | 1 |
| 11 | SL03190 | GASKET | 1 |
| 12 | SL03211 | GASKET | 2 |
| 13 | SL07044 | BUSHING / BUSH | 1 |
| 14 | SL04159 | SCREW | 4 |

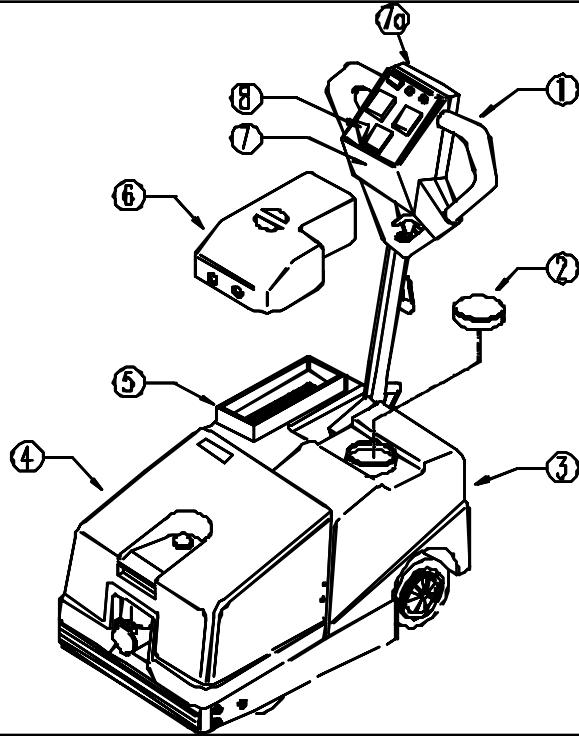


350 Automatic Scrubber CODE: pl1092U ab SN from 991657



| REF | CODE | DESCRIPTION | QTY |
|-----|----------|----------------------|-----|
| 1 | SL2311€ | FAIRLEAD | 2 |
| 2 | SL0415€ | SCREW | 2 |
| 3 | SL1819€ | FILTER | 1 |
| 4 | SL07202 | SUPPORT | 1 |
| 5 | SL0320C | GASKET | 2 |
| 6 | SL1820C | CAP | 1 |
| 7 | SL1918€ | HOSE | 1 |
| 8 | SL18102 | UNION / CONNECTOR | 3 |
| 9 | SL1819€ | DEVIATION / SHUNTING | 1 |
| 10 | SL19184 | HOSE | 1 |
| 11 | SL0407€ | SCREW | 2 |
| 12 | SL1415C | DUCT LOCK | 2 |
| 13 | SL03512 | PIGTAIL | 1 |
| 14 | SL14021 | CLAMP | 3 |
| 15 | SL0603€ | WASHER | 2 |
| 16 | SL05011 | NUT | 2 |
| 20 | SL02068U | PUMP | 1 |
| 21 | SL14124 | VIBRATION-DAMPING | 2 |
| 22 | SL1918€ | HOSE | 1 |
| 23 | SL1310€ | PIGTAIL | 1 |
| 24 | SL1415€ | RIVET | 1 |
| 25 | SL0601€ | WASHER | 1 |
| 26 | SL1414€ | DUCT LOCK | 1 |

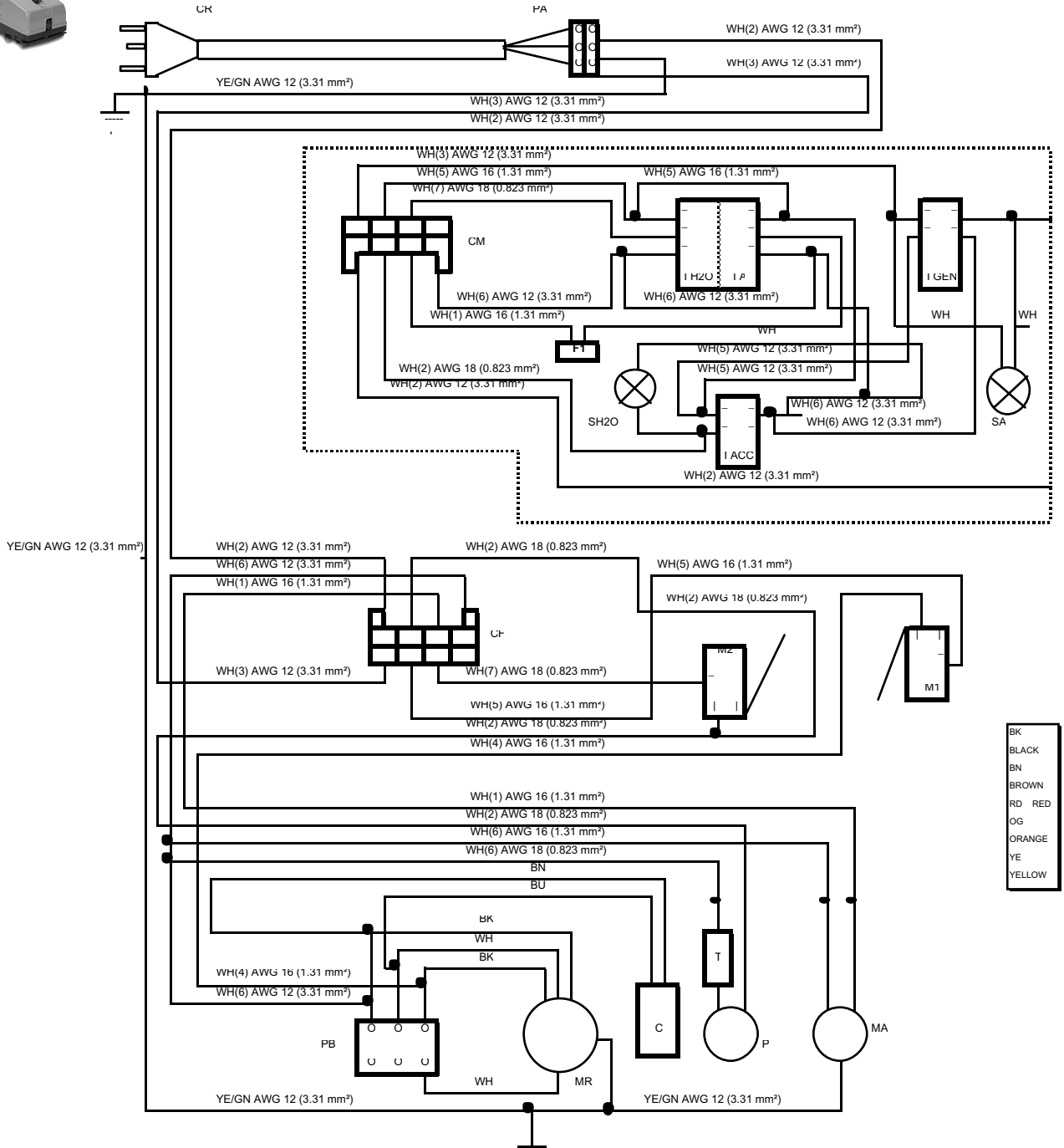
350 Automatic Scrubber CODE: pl1275U ab SN from 00B000



| REF | CODE | DESCRIPTION | QTY |
|-----|-----------|-----------------|-----|
| 1 | SL0959€ | STEERING COLUMN | 1 |
| 2 | SL17185NE | LID | 1 |
| 3 | SL17248F | TANK | 1 |
| 4 | SL1726C | HOOD | 1 |
| 5 | SL17249F | TANK | 1 |
| 6 | SL17259NE | LID | 1 |
| 7 | SL1726€ | BOX | 1 |
| 7a | SL1717z | BOX | 1 |
| 8 | SL253021 | LABEL | 1 |
| | | | |
| | | | |

WD27008 aa SN from 98L000

CODE:



- BK BLACK
- BN BROWN
- RD RED
- OG ORANGE
- YE YELLOW

| REF | DESCRIPTION |
|------|---------------------------|
| IA | VACUUM SWITCH |
| IACC | COMBI SWITCH |
| IGEN | POWER SUPPLY SWITCH |
| IH20 | PUMP SWITCH |
| M1 | BRUSH MICROSWICH |
| M2 | PUMP MICROSWICH |
| PA | TERMINAL BOARD 3 POS PA27 |
| SA | POWER SUP. WARN. LIGHT |
| SH20 | PUMP WARNING-LIGHT |
| T | PUMP TEMPERATUR SENSOR |
| C | BRUSH MOTOR CAPACITOR |
| CR | GRID CABLE |
| MA | VACUUM MOTOR |
| MR | BRUSH MOTOR |



← Back 1 page

| REF | DESCRIPTION |
|-----|----------------------|
| P | PUMP |
| PB | TERMINAL BOARD 6 POS |
| CF | FEMALE CONNECTOR |
| CM | MALE CONNECTOR |
| F1 | FUSE |



Warranty Policy

Limited Warranty

Eagle Power Products (EPP) warrants new cleaning equipment against defects in material and workmanship under normal use and service to the original purchaser as detailed below.

10 Years

Subject to the conditions stated below, EPP warrants polyethylene tanks and housings to be free from defects in materials and workmanship for a period of ten years.

3 Years

Subject to the conditions stated below, EPP warrants all automatic scrubber components to be free from defects in materials and workmanship for a 3-year period. Parts replaced or repaired are warranted for the remainder of the original warranty period.

1 Year

Subject to the conditions stated below, EPP warrants all other cleaning equipment components to be free from defects in materials and workmanship for a 1-year period. Parts replaced or repaired are warranted for the remainder of the original warranty period. Batteries are prorated for one year.

EPP will furnish and charge for replacement parts, including transportation, to the original owner through an EPP authorized service center. If the part is returned within 30 days and is found defective, the owner will be credited for the cost of the replacement part including shipping and handling.

Labor charges are covered for one year from the date of purchase if provided by an authorized EPP service center. Travel is covered for 90 days for battery operated equipment only.

Wear items exempt from warranty include belts, carbon brushes, power cords, wheels, pad drivers, clutch plates, brushes, pads, handle grips, filters, screens, throttle cables, and squeegees.

This warranty shall not apply to failures caused by misuse or abuse, improper maintenance as stated in the operation manuals, use of unauthorized repair parts, repairs by other than an EPP authorized service center, and damage in transit.

EPP disclaims and denies any liability for any direct, indirect, special incidental or consequential damage which may be suffered as a result of sale, delivery, servicing, use, loss of any product, downtime, labor, freight, or other charges not expressly included herein.

Date Purchased: _____

Serial Number: _____

Serial Number: _____

Please be sure to record this information. This information will be necessary for future warranty claims.



1174 Northland Drive Mendota Heights, MN 55120
651.686.5399 Fax 651.686.5695
www.eaglepower.com

Eagle Power Products Sales and Service Provided by: