



Electronic Service Manuals

This electronic document is provided as a service to our customers. We do not create the contents of the information contained in this document. Should you have detailed questions pertaining to the information contained in this document, you may contact Michco, or the manufacturer which provided the original information in this electronic deliverable. Michco's only part in this electronic deliverable was the electronic assembly process. By providing this manual on line we are not guaranteeing parts availability.

You may contact Michco through the following methods:

Phone (517) 484-9312 or (800) 331-3339

2011 N. High St. -- Lansing, Michigan -- 48906

Fax: (517) 484-9836

Email: CustServe@Michco.com

Web site: www.Michco.Com

Parts Web site: www.FloorMachineParts.Com

Order Parts on Line at:

www.FloorMachineParts.Com

Directly to Parts & Service:

By Email: **Shop@Michco.com**

By Fax: (517) 702-2041

By Voice: Use numbers above.

Serving the Cleaning Industry Since 1922

Notice: All copyrighted material remains property of original owners, all trademarks are property of respective owners. Manuals are subject to Manufacturer's reproduction limitations. Originals or reproductions were provided by manufacturers through a request. We make no warranty as to the correctness of information provided in this document and you assume all risk. By placing these manuals on line we are not declaring our corporation to be an manufacturer authorized dealer or provider, please check our web site for authorized manufacturers we represent.

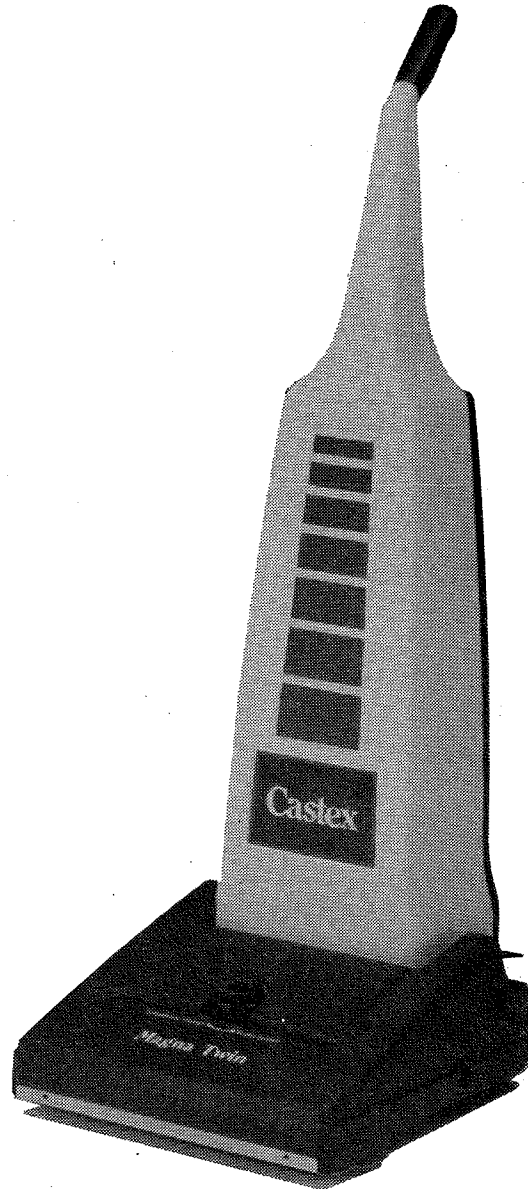
10/20/87

Magna Twin 16

The high powered dual motor vacuum

Model No. CV 5000 MV 2000

Reference Manual



Machine Serial Number:

**READ MANUAL CAREFULLY
BEFORE OPERATING MACHINE**

Castex

Castex Industries, Inc.
4240 Blue Star Hwy., Holland, Michigan 49423.
800-253-7871 616-392-6966

MAGNA TWIN OPERATIONS MANUAL

A. SET UP AND OPERATION:

(Numbers refer to parts diagrams)

1. Unpack your Magna Twin from its box and verify that the filter vac bag is in place by rotating the Latch Handle #5 in either direction, then lowering the Rear Panel Housing. The filter bag's collar should be securely fastened onto the air inlet pipe.

The Magna Twin 16 Model MV2000 is shipped with a cloth bag installed and one disposable paper bag. The Magna Twin 16 Model CV5000 is shipped with a paper bag installed along with 2 paper bags inside the packaging carton.

IMPORTANT:

DO NOT OPERATE THE MAGNA TWIN WITHOUT EITHER THE CLOTH BAG OR A PAPER BAG IN PLACE! THIS WILL FILL THE VACUUM CHAMBER WITH DIRT AND ALSO PLUG THE SECONDARY VACUUM FILTER #29 WHICH COULD BURN OUT THE VACUUM MOTOR #28.

2. Plug the Magna Twin into a grounded outlet.

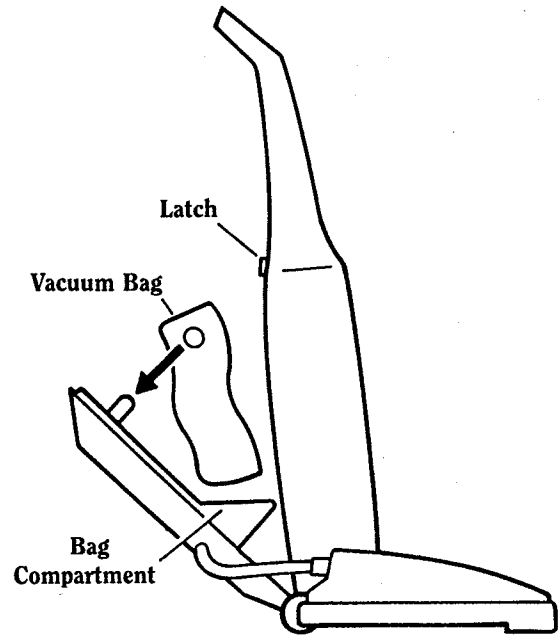
WARNING!!:

DO NOT OPERATE THE MACHINE WITHOUT A GROUND PIN! THE GROUND PIN IS NECESSARY TO AVOID AN ELECTRICAL HAZARD.

DO NOT USE YOUR MAGNA TWIN FOR PICK UP OF WET DEBRIS OR ON WET SURFACES! THIS POSES AN ELECTRICAL HAZARD AND COULD RESULT IN SERIOUS INJURY!

THE BAG FULL LIGHT REFERS ONLY TO MODEL MV2000.

3. Turn the Power Switch #12 on and check the Bag Full Light #8. If this light glows, turn the Power Switch off. The Bag Full Light senses when airflow inside the vacuum chamber is restricted. This could be caused by the following problems:
 - a. The Vacuum Filter Bag is full. If the bag is full, empty a Cloth Bag or install a new Paper Bag. (*See illustration).
 - b. The pores in a Cloth Bag are clogged. This is caused by not cleaning the Cloth Bag thoroughly enough. If the bag is heavily clogged, it may be necessary to turn the bag inside out and remove the debris by hand.



(Bag Installation and Removal)

- c. The Vacuum Hose #18 is kinked or plugged. Remove the Vacuum Hose cuff from the Inlet Tube Base #50 and gently pull the Vacuum Hose from its storage compartment until it is fully extended. Then, turn the Magna Twin on and attempt to dislodge the clog by repeatedly cupping and removing your palm on the end of the Vacuum Hose. If the clog still remains, try inserting a broom handle into the hose to dislodge the debris. Use care in packing the vacuum hose back into its storage compartment to prevent kinking.

IMPORTANT:

ALWAYS TURN THE MAGNA TWIN OFF IMMEDIATELY WHEN THE BAG FULL LIGHT GLOWS, AND PERFORM ITEMS 3a, 3b, and 3c IN THE ABOVE CHECKLIST. EXTENDED OPERATION WITH THIS LIGHT GLOWING MEANS THAT THE VACUUM MOTOR IS BEING STARVED FOR AIR, WHICH MAY CAUSE IT TO OVERHEAT AND BURN OUT.

DO NOT OPERATE THE MAGNA TWIN WITHOUT FILTER #29 IN PLACE! If the Filter Bag should break, the snap-on filter will protect the vacuum motor from ingesting dirt and debris which will cause severe damage to the motor!

Each time the filter bag needs cleaning or changing, also remove the snap-on vacuum filter #29 and clean it. Keeping this filter clean will improve airflow and maximize the amount of dirt your Magna Twin can pick up.

With the Magna Twin switched ON, depress the foot latch #46 and lower the handle to working position. Push the Magna Twin forward and back to test brush height. If the brush needs raising, rotate the height adjustment knob #54 counterclockwise. Turn the knob clockwise to lower the brush.

When you have adjusted the brush to the correct height, begin your vacuuming job by pushing the Magna Twin forward and back.

IMPORTANT:

DO NOT PERMIT THE SPINNING BRUSH TO REMAIN ON ONE SPOT FOR AN EXTENDED PERIOD OF TIME! THIS CAN FRAY THE CARPET!

Your Magna Twin is equipped with a circuit breaker #37 to protect the brush motor if the brush becomes entangled with carpet fibers. This circuit breaker senses when the brush is encountering excessive friction and shuts off electrical current to the motor. If the circuit breaker trips, follow these steps:

1. TURN OFF AND UNPLUG THE MAGNA TWIN.
2. Tip the Magna Twin sideways and verify that the circuit breaker is protruding outward in the "tripped" position.
3. Remove carpet strands or other debris clogging the brush.
4. Reset the circuit breaker by pushing the black button labeled "1.5".

B. OPERATION WITH ACCESSORY ATTACHMENTS:

Disconnect the vacuum hose #18 from the Inlet Tube Base #50 and gently pull vacuum hose from its storage compartment until it is fully extended. Attach the desired accessory to the vacuum hose, flip the power switch ON and begin cleaning.

Always do accessory cleaning with the handle locked in the upright position. This keeps the brush raised off the carpet which prevents it from fraying the carpet by remaining in one spot too long.

C. SERVICING:

WARNING!:

ALWAYS UNPLUG YOUR MAGNA TWIN BEFORE PERFORMING ANY SERVICE. SEVERE PERSONAL INJURY COULD RESULT IF ELECTRICAL POWER IS NOT DISCONNECTED!

1. BRUSH WEAR ADJUSTMENT:

Your Magna Twin features a brush-wear adjustment which allows you to obtain maximum life from your brush as the bristle length decreases with wear. To adjust the brush, follow these steps:

- a. Remove the two slotted head screws #47A.
- b. Lift brush shoe #39 by raising rearward portion and sliding it forward and off.
- c. Use a screwdriver to pry the white brush block #59 loose on the side OPPOSITE to the belt.
- d. Remove brush from vacuum cleaner housing.
- e. Note that the brush block holes are offset, then rotate both blocks 180° and reinstall brush with the longer sides of the blocks toward the vacuum cleaner housing. This will force your brush away from the housing and deeper into carpet, which compensates for worn bristles.

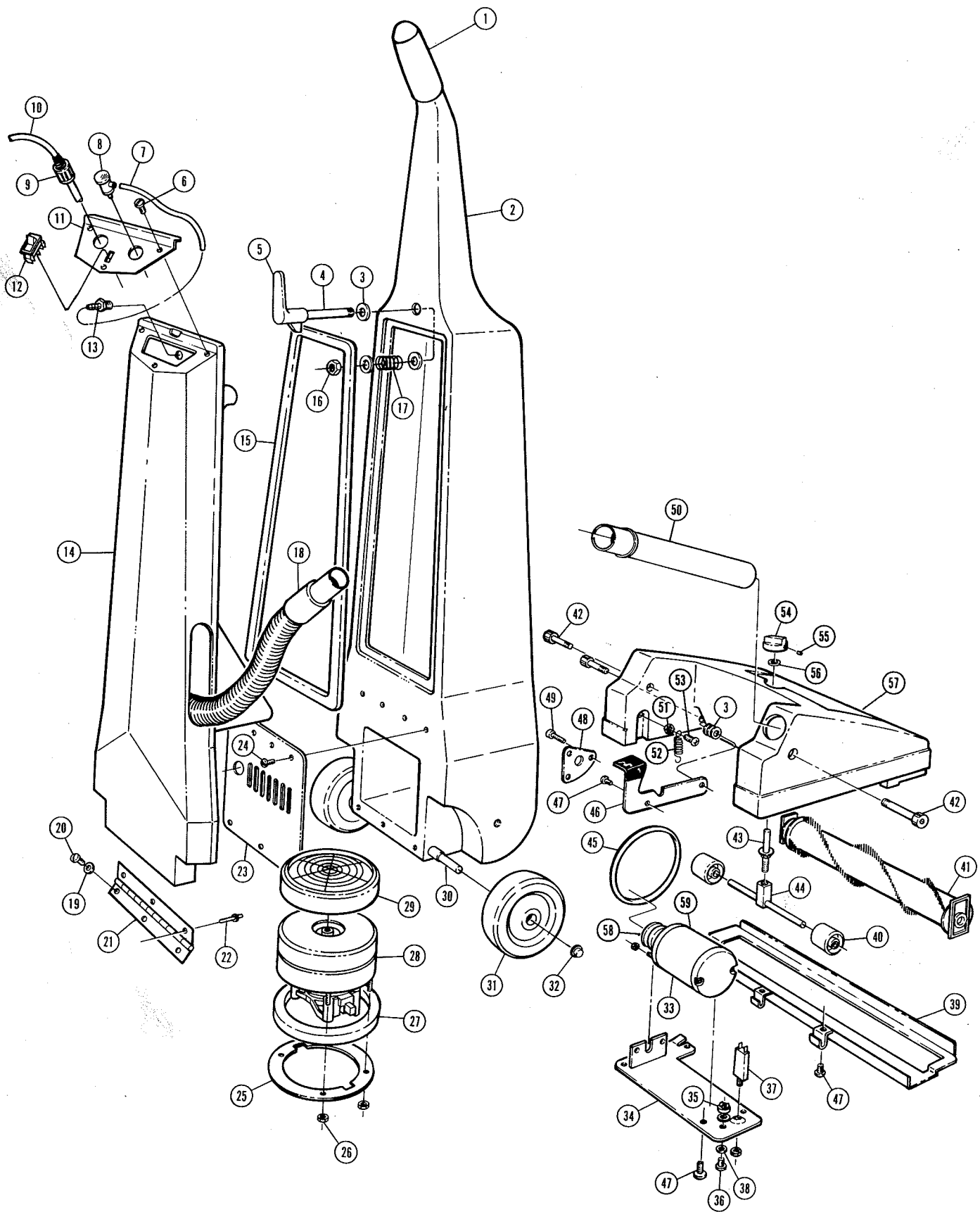
2. BELT REPLACEMENT:

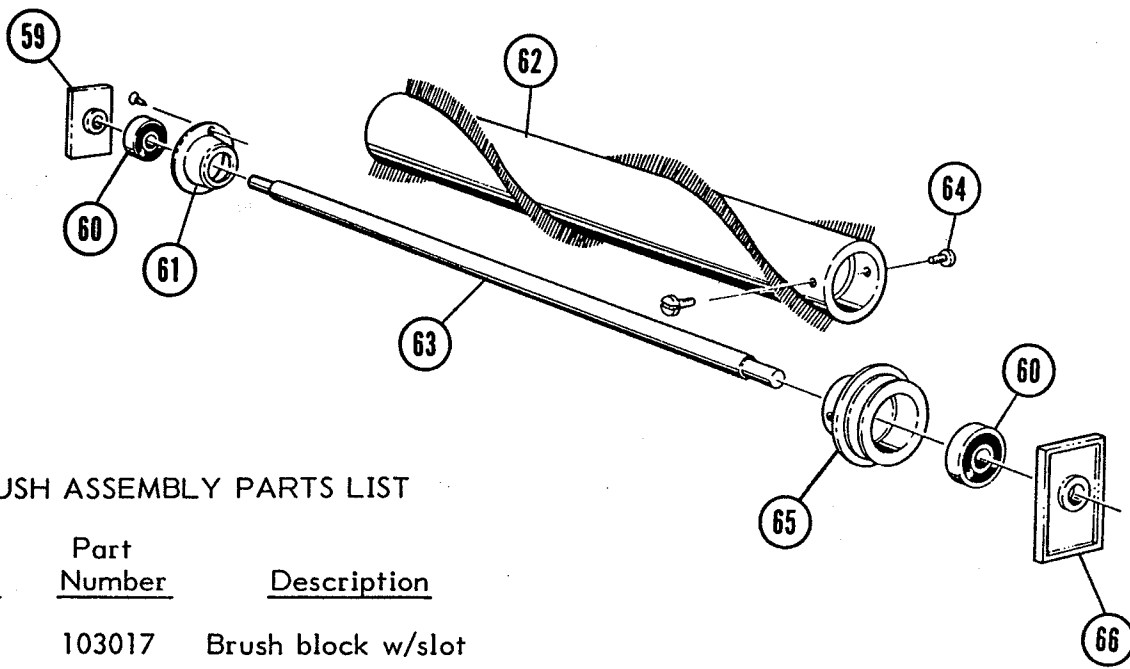
Follow instructions 1a through 1d for BRUSH WEAR ADJUSTMENT. Next, remove the three motor plate screws #47 to allow removal of the motor plate. With the motor plate removed, replace the belt on the motor pulley and reinstall the motor plate. Now slip the belt onto the brush and reinstall the brush, stretching the belt firmly. Fasten the brush shoe #39 back into place using the two screws #47A.

MAGNA TWIN PARTS LIST

Code Number	Part Number	Description	Code Number	Part Number	Description
1	180622	Handle grip	32	103029	Axle cap
2	100731	Handle housing	33	130425	Drive motor
3	140013	3/8" washer	34	240027	Motor plate
4	230245	Latch shaft	35	130304	Rectifier
5	103015	Latch handle	36	140838	6/32 x 3/4 screw
6	140822	10 - 24 3/8" screw	37	130743	Circuit breaker
7	160225	Hose MV 2000	38	140031	#10 washer
8	130742	Bag full light MV 2000	39	240026	Brush shoe
9	130137	Cord grip	40	203018	Rollers
10	130219	18/3 - 50' power cord	41	240035	Brush assembly (complete)
11	240032	Switch plate	42	140239	3/8" x 1 3/8" socket head
12	130714	Lighted rocker switch	43	230242	Adjuster shaft
13	150514	1/4" x 1/8" hose barb MV 2000	44	240130	Axler roller shaft
14	100732	Rear panel housing	45	100047	Belt
15	100009	Handle housing gasket	46	240028	Foot latch
16	140535	3/8" - 16 jam nut	47	140878	1/4" x 3/8" round head screw
17	140412	Spring	48	240029	Latch plate
18	160425	5' Attachment hose MV 2000	49	140863	1/4" x 1" socket head screw
	160428	25 1/2" hose DV 5000	50	240177	Inlet tube base
19	140011	3/16 washer	51	140510	1/4 - 20 hex nut
20	140821	10 - 24 x 1" screw	52	140413	Spring
21	230244	Hinge	53	140808	1/4" x 3/4" round head screw
22	140703	3/16 rivet	54	130230	Height adjuster knob
23	240034	Vac motor plate	55	140859	Set screw
24	140825	#6 - 1/2" self tapping screw	56	140000	1/4" washer
25	240033	Vac motor ring	57	100730	Brush housing
26	140519	10 - 24 kep nut	58	240030	Pulley
27	100039	Gasket vac motor	59	130425	Motor
28	130418	2 stage vac motor			
29	180626	Vac filter			
30	240129	Wheel axle			
31	103028	Wheel			

130425 ?





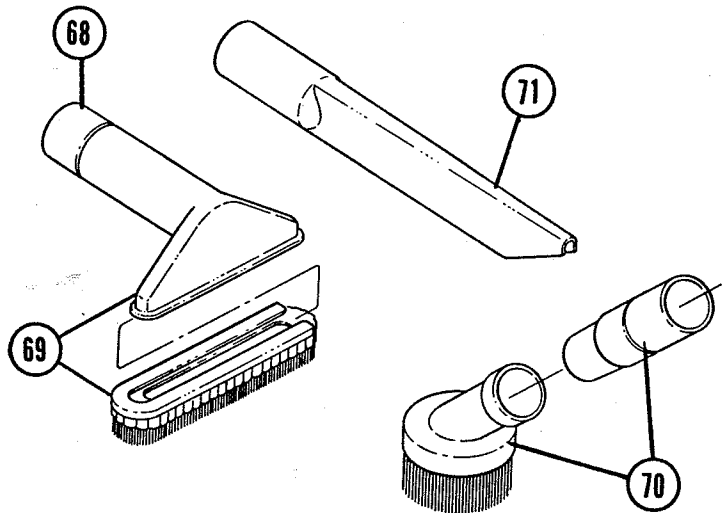
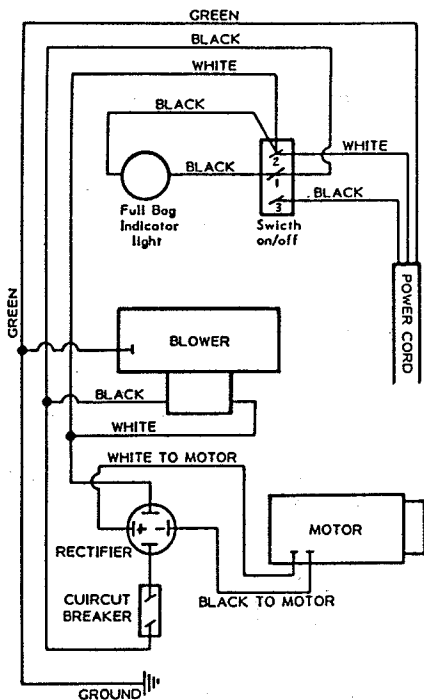
BRUSH ASSEMBLY PARTS LIST

<u>Code Number</u>	<u>Part Number</u>	<u>Description</u>
59	103017	Brush block w/slot
60	140125	Bearings
61	240024	Bearing cup
62	240003	Brush
63	230241	Brush shaft
64	—	Screw
65	240031	Brush pulley
66	103016	Brush block
	240035	Brush (complete)

HOSE ATTACHMENTS PARTS LIST

<u>Code Number</u>	<u>Part Number</u>	<u>Description</u>
67	190040	Complete kit
68	190041	Upholstery tool
69	190042	Stair brush
70	190043	Dusting brush
71	190044	Crevice tool

VACUUM WIRING DIAGRAM



VACUUM BAGS

<u>Part Number</u>	<u>Description</u>
190050	Vacuum bags, paper (six per pack)
190051	Vacuum bags, paper (case of 12 packages)
900031	Vacuum bag, cloth (one per package)

MAGNA TWIN TROUBLESHOOTING GUIDE

Problem	Cause	Solution
Will not pick up dirt	1. Slipping belt	1. Inspect belt for wear and replace if needed
	2. Brush clogged	2. Remove debris from brush
	3. Brush circuit breaker tripped	3. Push black circuit breaker button labeled "1.5" underneath Magna Twin. Check for clogs around brush.
	4. Filter bag full	4. See SETUP AND OPERATION, step #3a
	5. Cloth bag clogged	5. See SETUP AND OPERATION, step #3b
	6. Vacuum hose clogged	6. See SETUP AND OPERATION, step #3c
	7. Vacuum filter #29 plugged with dirt	7. Remove filter and clean by brushing dirt off by hand. DO NOT clean with water unless filter is dry before re-installing.
		DO NOT EVER CLEAN WITH FLAMMABLE MATERIAL SUCH AS GASOLINE OR THINNER!! THIS COULD CAUSE EXPLOSION HAZARD!
	8. Brush too high	8. Turn brush adjustment knob #54 clockwise
Brush slows	1. Brush too low	1. Turn brush adjustment knob #54 counter-clockwise
	2. Brush clogged	2. Remove carpet fibers or other debris
	3. Belt worn	3. Replace belt
Bag full light glows	1. Airflow restriction	1. See Causes and Solutions #4 - #7 under the Problem "Will not pick up dirt."

**CASTEX INDUSTRIES INC., reserves the right to make changes and improvements
to its equipment without notice.**