



Electronic Service Manuals

This electronic document is provided as a service to our customers. We do not create the contents of the information contained in this document. Should you have detailed questions pertaining to the information contained in this document, you may contact Michco, or the manufacturer which provided the original information in this electronic deliverable. Michco's only part in this electronic deliverable was the electronic assembly process. By providing this manual on line we are not guaranteeing parts availability.

You may contact Michco through the following methods:

Phone (517) 484-9312 or (800) 331-3339

2011 N. High St. -- Lansing, Michigan -- 48906

Fax: (517) 484-9836

Email: CustServe@Michco.com

Web site: www.Michco.Com

Parts Web site: www.FloorMachineParts.Com

Order Parts on Line at:

www.FloorMachineParts.Com

Directly to Parts & Service:

By Email: **Shop@Michco.com**

By Fax: (517) 702-2041

By Voice: Use numbers above.

Serving the Cleaning Industry Since 1922

Notice: All copyrighted material remains property of original owners, all trademarks are property of respective owners. Manuals are subject to Manufacturer's reproduction limitations. Originals or reproductions were provided by manufacturers through a request. We make no warranty as to the correctness of information provided in this document and you assume all risk. By placing these manuals on line we are not declaring our corporation to be an manufacturer authorized dealer or provider, please check our web site for authorized manufacturers we represent.

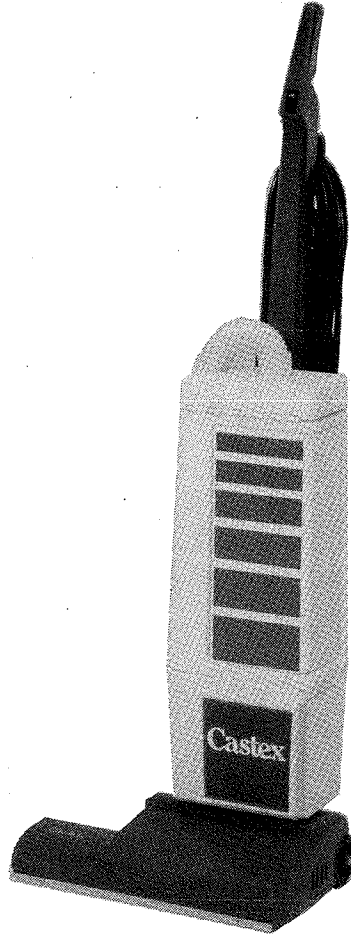
4/15/92

Lite Trac

Lightweight, Powerful Upright Vacuum

Reference Manual

This manual revised 02/91



Machine Serial Number

**READ MANUAL CAREFULLY
BEFORE OPERATING MACHINE**

Castex®

Castex Industries, Inc.
4240 Blue Star Highway Holland, MI 49423 U.S.A.
800-283-7871 616-392-6966
FAX 616-392-2886 Telex: 910 2409 127

A. SET UP AND OPERATION:

NOTE: Numbers in these instructions refer to parts in the parts list and diagram on pages 3 and 4.

1. Your new Lite Trac vacuum is shipped with the handle removed. Align the handle in the channel on the back of the vacuum housing. Carefully slide the handle downward until the male plug, #61 at the bottom of the handle connects with the female receptacle, #60 in the vacuum housing. Check to make sure the plug is connected securely, then fasten the handle in place using the two screws, #63.
2. For North American models, connect only to a grounded 120 volt A.C. (3 hole) electrical outlet. See Figure 1.

For models sold outside North America, plug into a grounded (earthed) 240 volt A.C. power outlet.

WARNING!!! To avoid an electrical hazard, the Lite Trac must be grounded while in use to protect the user from electric shock and serious injury!

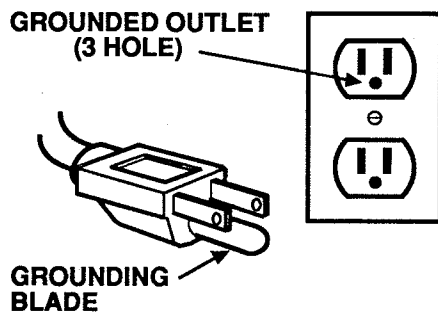


Figure 1

3. Before beginning operation, always check to make sure that there is a bag installed in the vacuum housing.

IMPORTANT! Operation without a bag or with a full bag will damage your vacuum. Damage due to these causes is NOT covered by warranty.

4. Close the vacuum housing lid, #5 and latch it.
5. Place your right foot on the toe kick to hold the base, then pull the handle back to the vacuuming position.
6. Turn on the power switch located on the handle.
7. Begin vacuuming. When cleaning under beds or other hard to reach areas, you can lower the handle to the floor for easy clearance.
8. Periodically check the vacuum bag level. For best

cleaning results, change the bag when it becomes three-quarters full.

9. When you change the bag, also check the condition of the secondary filter, #13. If it is dusty, remove and clean it. A clogged filter can reduce airflow and cleaning power.

NOTE: If the brush stops during use, unplug the vacuum and dislodge any obstructions near the brush. Then, push in the brush reset button, #29 located at the rear of the vacuum, near the wheels.

B. USING ACCESSORY TOOLS:

1. You can use accessory tools with your Lite Trac. To connect these tools, pull the vacuum hose cuff out of the brush base assembly. Leave the other end of the hose connected to the vacuum housing.
2. Connect the accessory tool to the hose. See Figure 3.



Figure 3

3. With the handle locked in the upright position, turn on the switch and begin vacuuming.

NOTE: The brush will not run while the handle is locked in the upright position. An automatic switch shuts the brush motor off in this position.

C. ROUTINE MAINTENANCE:

1. The most important step is to remove carpet strands and other clogging debris from the brush after every use. This simple step can extend the life of your brush bearings.
2. Check the vacuum bag level frequently to prevent overfilling the bag. Always dispose of paper bags when they become full, do not reuse them. If using a cloth bag, empty the bag and shake out excess dust. Also, inspect the cloth bag for tearing or holes each time you empty it.
3. Check the vacuum hose, #6 for clogging material after every use.
4. Clean the secondary filter, #13 once each month. This filter provides extra vacuum motor protection.
5. Clean the exhaust filter, #26 once each month. Press down on the top of the filter cover, #27 and remove the cover to gain access to the filter.
6. The brush on your Lite Trac vacuum is adjustable for maximum brush life. When the brush bristles shorten with wear, you can lower the brush shaft closer to the carpet and get extended life from the shorter brush bristles. Follow these steps:
 - a. Remove the brush plate #49.
 - b. Look closely at the two white bearing blocks, #53 and note that a number 1 shows on each block.
 - c. Remove the brush assembly #56 from the brush housing #32.

- d. Hold the brush and rotate each of the two white bearing blocks, #53 until you see the number 2 on each block. See **Figure 4**.

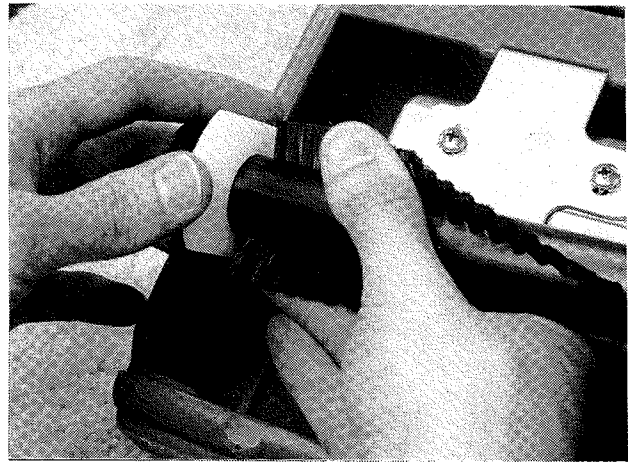


Figure 4

- e. Reinstall the brush so the number 2 shows on each block.
- f. Replace the brush plate #49.

D. GENERAL SERVICE POLICY:

When ordering parts or requesting service, specify:

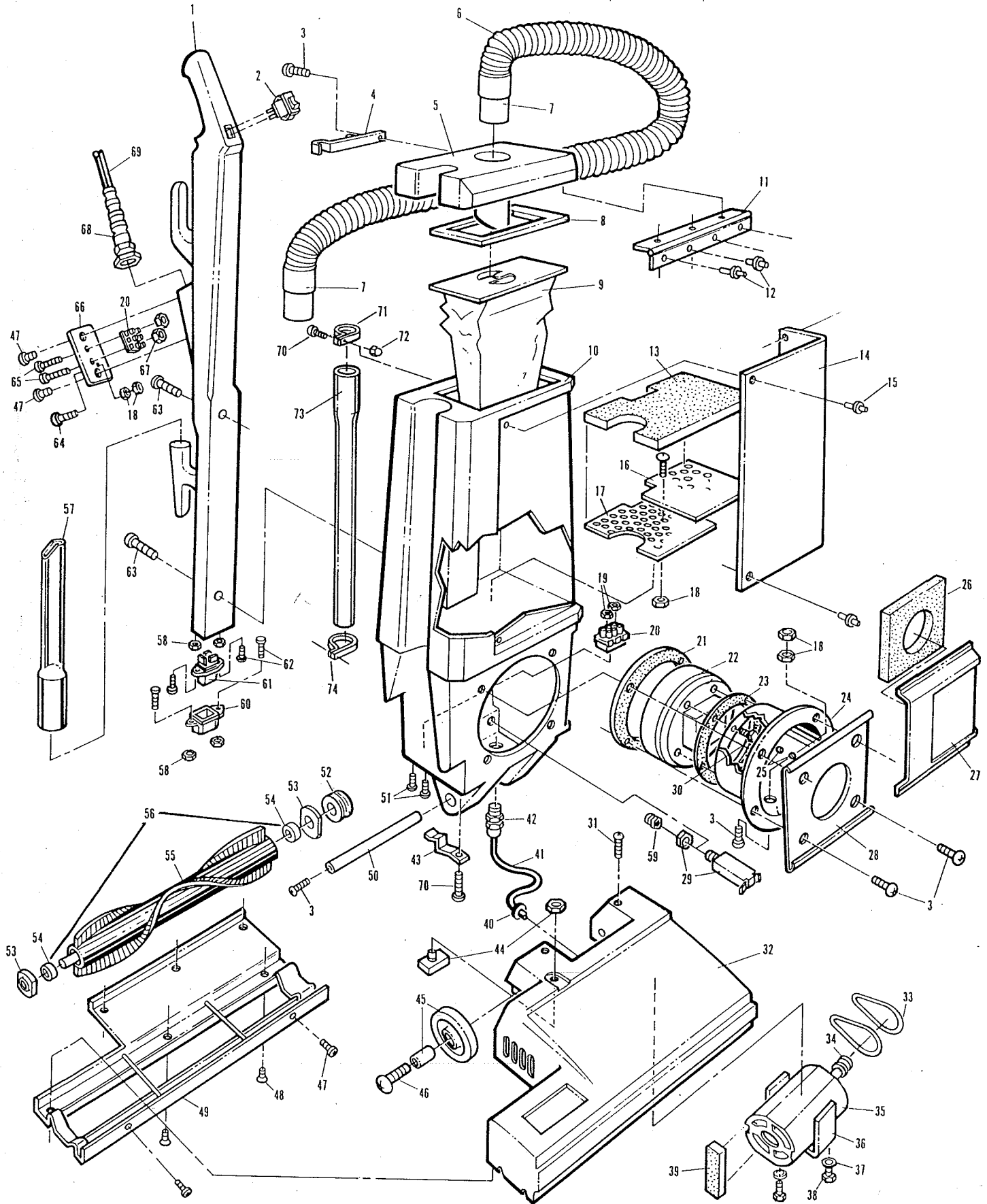
1. The model & serial number of the machine.
2. Part number.
3. PART DESCRIPTION.

All parts returned to the factory must arrive prepaid with a Return Authorization Number issued by Castex Customer Service. Always enclose a note indicating the problem you are experiencing with the part, your name, phone number and address.

LITE TRAC PARTS LIST

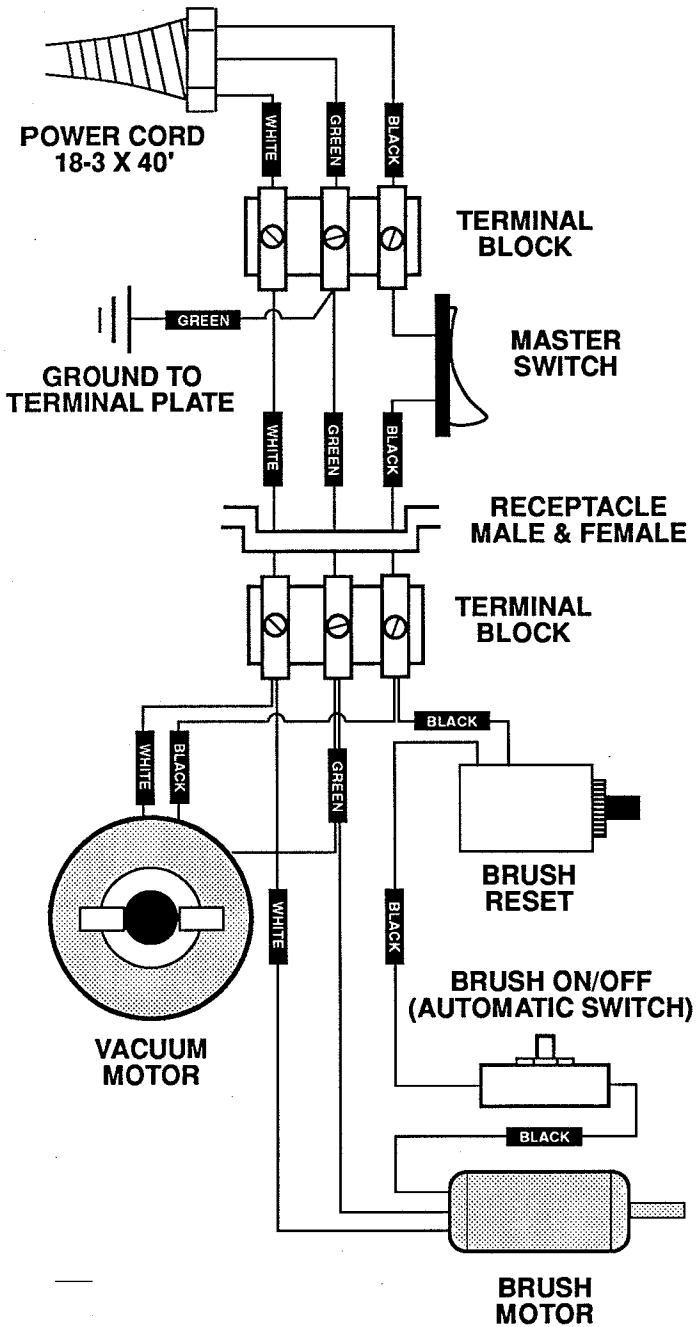
| ITEM # | DESCRIPTION | PART # | QTY. | ITEM # | DESCRIPTION | PART # | QTY. |
|--------|--|-------------|------|--------|--|-------------|------|
| 1. | HANDLE, ROTO.BLUE 120 V W/CUTOUTS | 100876 | 1 | 38. | SCREW, MACHINE 10-32 X 1/4" PHP ZINC | 140941 | 2 |
| | HANDLE, ROTO.BLUE 220 V W/CUTOUTS | 100880 | 1 | 39. | FILTER, BRUSH MOTOR | 180637 | 2 |
| 2. | SWITCH, ROCKER ON/OFF 120 V | 130717 | 1 | 40. | BUSHING, SNAP 5/16 ID - BLACK (7/16" HOLE) | 130188 | 1 |
| | SWITCH, ROCKER DPST 220 V | 130647 | 1 | 41. | CORD ASSY., #18/3 X 24" BLACK SJTO | 130672 | 1 |
| 3. | SCREW, MACHINE 10-24 X 3/8 THP-S/S | 140837 | 8 | 42. | CORD, GRIP/LIQ. TIGHT 3/8"NPT NYL. | 130165 | 1 |
| 4. | LATCH, COVER | 230617 | 1 | 43. | SPRING, LATCH HANDLE | 140422 | 2 |
| 5. | COVER, BAG ROTO. NAT. W/CUTOUTS | 100879 | 1 | 44. | SWITCH, ON-OFF NORMALLY CLOSED | 130754 | 1 |
| 6. | HOSE, VAC. 1-1/4" X 28" | 160475 | 1 | 45. | WHEEL, 3" BLACK W/ BUSHING | 103055 | 2 |
| 7. | HOSE CUFF, 1-1/2" TAPERED END WHITE | 160471 | 2 | 46. | SCREW, MACH. 5/16"-18 X 1-3/4 THP-Z | 140850 | 2 |
| 8. | GASKET, COVER | 100141 | 1 | 47. | SCREW, MACH. 8-32 X 1/4 PHP-ZINC | 140878 | 4 |
| 9. | BAG, VACUUM-PAPER 1 PKG. = 10 BAGS | 900035 | 1 | 48. | SCREW, MACH. 10-24 X 3/8" FHP ZINC | 140882 | 6 |
| 10. | HOUSING, BAG ROTO. W/CUTOUTS | 100878 | 1 | 49. | SHOE, CARPET | 230624 | 1 |
| 11. | HINGE, COVER | 230626 | 1 | 50. | SHAFT, PIVOT | 230618 | 1 |
| 12. | RIVET, POP 1/8 - ZINC LID | 140706 | 7 | 51. | SCREW, 6-32 X 1" ROUND HD. SLOT NYLON | 140946 | 2 |
| 13. | FILTER, HOUSING | 102530 | 1 | 52. | PULLEY, BRUSH DOUBLE V | 230348 | 1 |
| 14. | PLATE, DECAL L SHAPE WHITE | 250388 | 1 | 53. | BLOCK, BEARING | 230622 | 2 |
| 15. | RIVET, POP 1/8 ALUM. - WHITE DECAL PLATE | 140707 | 4 | 54. | BEARING, BRUSH | 140125 | 2 |
| 16. | SCREEN, BAG HOUSING BLACK | 250080 | 1 | 55. | BRUSH, CYLINDER | 240067 | 1 |
| 17. | SCREEN, BAG HOUSING W/1/2 MOON BLACK | 250081 | 1 | 56. | BRUSH ASSEMBLY (LITE TRAC) | 700870 | 1 |
| 18. | NUT, KEPS 10-24 - S/S BULK | 140519 | 5 | 57. | TOOL, CREVICE | 190714 | 1 |
| 19. | NUT, NYLON 6-32 | 140534 | 2 | | ATTACHMENT KIT COMPLETE | 190713 | 1 |
| 20. | TERMINAL STRIP, 25 AMP 3 POS. | 130005 | 2 | | (Includes dusting brush, upholstery brush & floor brush) | | |
| 21. | GASKET, VAC COVER | 100142 | 1 | 58. | NUT, JAM HEX NYLON LOCK 4-40 ZINC | 140581 | 4 |
| 22. | MOTOR, VACUUM 5.7 DIA 1 STAGE 120 V | 130988 | 1 | 59. | SEAL, BELLOW W/NUT | 130761 | 1 |
| | MOTOR, VACUUM 5.7 DIA 1 STAGE 220 V | 130997 | 1 | 60. | RECEPTACLE, FEMALE | 130614 | 1 |
| 23. | GASKET, VAC MOTOR | 100143 | 1 | 61. | RECEPTACLE, MALE | 130613 | 1 |
| 24. | COVER, VAC MOTOR | 230623 | 1 | 62. | SCREW, 4-40 X 1/2 FHP-ZINC | 140566 | 4 |
| 25. | GROMMET, 1/4" O.D. X 1/8" I.D. | 240218 | 2 | 63. | SCREW, MACHINE 5/16"-18 X 1" THP-ZINC | 140849 | 2 |
| 26. | FILTER, EXHAUST | 180633 | 1 | 64. | SCREW, 10-24 X 1/2" THP -S/S | 140890 | 3 |
| 27. | COVER, EXHAUST FILTER | 100793 | 1 | 65. | SCREW, MACH. 6-32 X 3/4 RHS-NYLON | 140879 | 2 |
| 28. | PLATE, COVER PAINTED WHITE 120 V | 230625.WH | 1 | 66. | PLATE, TERMINAL BLOCK BLUE | 230619.BL | 1 |
| | PLATE, COVER PAINTED WHITE 220 V | 230625.1.WH | | 67. | NUT, HEX 6-32 - NYLON | 140534 | 2 |
| 29. | BREAKER, CIRCUIT 1.5 AMP | 130760 | 1 | 68. | CORD GRIP, LIQ. TIGHT FLEX NYLON 120V | 130166 | 1 |
| 30. | SCREW, THREAD FORM.HEX HD. 10-32 X 1/2 | 140751 | 2 | | CORD GRIP, LIQ. TIGHT 3/8 NPT NYLON 220V | 130137 | 1 |
| 31. | SCREW, 10-24 X 3/8 SLOT HD.NYLON | 140947 | 2 | 69. | CORD ASSY., 18/3 X 40 FT. BLK. SJTO 120V | 130252 | 1 |
| 32. | HOUSING, BASE ROTO. BLUE, CUT 120/220 | 100877 | 1 | | CORD EURO. 18/3 BLACK EURO. | 13093640 ft | |
| 33. | BELT, BRUSH MOTOR ROUND | 230349 | 2 | 70. | SCREW, 10-24 X 1/2" TRUSS HEAD PHILIPS | 140890 | 2 |
| 34. | PULLEY, MOTOR DOUBLE V | 230347 | 1 | 71. | CLAMP, 1 1/2" DIA. NYLON | 140327 | 1 |
| 35. | MOTOR, BRUSH DRIVE 120 VOLT | 130446 | 1 | 72. | NUT, ACORN 10-24 - NICKEL | 140511 | 2 |
| | MOTOR, BRUSH DRIVE 240 VOLT | 130447 | 1 | 73. | TUBE, EXTENSION, BLACK | 190039 | 1 |
| 36. | BRACKET, MOTOR | 230615 | 1 | 74. | CLAMP, NYLON 1 1/4" ID - NATURAL | 140330 | 1 |
| 37. | WASHER, EXTERNAL LOCK TOOTH #10 ZINC | 140031 | 2 | | | | |

LITE TRAC PARTS DIAGRAM

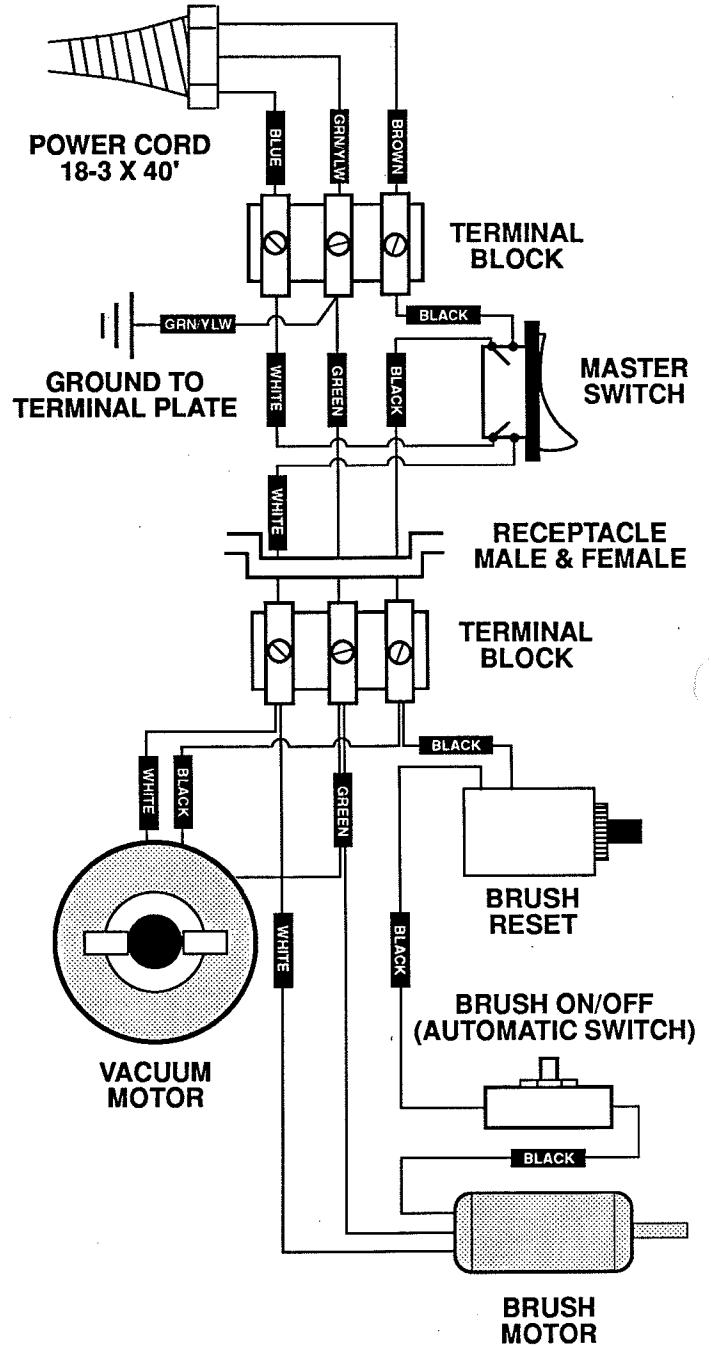


WIRING DIAGRAMS

120 VOLT



220 VOLT



TROUBLESHOOTING GUIDE

| PROBLEM | CAUSE | SOLUTION |
|---|--|--|
| The Lite Trac will not pick up dirt. | 1. The vacuum bag, #9 is full. | 1. Install a new paper vacuum bag or empty the cloth bag. |
| | 2. The hose, #6 is clogged. | 2. Remove clogs from hose. |
| | 3. The hose, #6 is loose from the brush base, #32. | 3. Push the hose cuff firmly into the brush base after cleaning with attachments. |
| | 4. One or both hose cuffs, #7 are loose. | 4. Hold hose in one hand and turn cuff with the other hand until it is tightly threaded onto the hose. |
| | 5. The brush clogged and caused the brush circuit breaker, #29 to trip. | 5. Unplug the Lite Trac , then remove the clog. Push the brush reset button, #29 at the rear of the vacuum. |
| | 6. The secondary filter, #13 is clogged. | 6. Remove the filter and clean or replace it. |
| | 7. The brush drive belts, #33 are worn or broken. | 7. Replace the drive belts. |
| The Lite Trac will not run. | 1. The power cord is not plugged in or there is a short in the power cord. | 1. Check that the power cord is plugged in and also inspect it for damage. |
| | 2. The power outlet is not providing electricity due to a circuit breaker that has tripped in the building. | 2. Try plugging the Lite Trac into another power outlet. |
| | 3. The vacuum motor has shut off on thermal overload due to clogged hose, #6, vacuum bag, #9, secondary filter #13, or exhaust filter #26. | 3. Check all these locations for clogs. |
| | 4. The brush clogged and caused the brush circuit breaker, #29 to trip. | 4. Unplug the Lite Trac , then remove the clog. Push the brush reset button, #29 at the rear of the vacuum. |
| | 5. Faulty master switch, #2. | 5. Replace the switch. |
| | 6. Loose or broken wiring inside the vacuum. | 6. Consult the wiring diagram and repair wiring or take the Lite Trac to your authorized Castex Distributor for repairs. |

Castex® Warranty



L I F E T I M E

You can qualify for a lifetime warranty on all internal components with the Castex Added Protection Plan, C.A.P.P. When you use Castex chemicals, you receive C.A.P.P. coupons toward the purchase of Castex replacement parts. Call Castex for more information on C.A.P.P. You may never pay for a replacement part again!

10 Subject to the conditions stated below, Castex warrants the rotationally molded polyethylene and fiberglass housings, aluminum frames, and steel chassis for a period of 5 years on materials and workmanship. From the 5th to the 10th year, the warranty is prorated at 20% per year on materials and workmanship.

5 Subject to the conditions stated below, Castex warrants ALL components, materials and workmanship on the Cyclone Dryers for a full 5 years. The pump motor on the Magnum, Magnum DV and Magnum DVA is warranted for a period of 5 years on materials and workmanship.

1 Castex offers a full one year warranty on all other Castex components as outlined below.

Subject to the conditions and exceptions stated in this warranty, Castex Industries, Inc., warrants the Castex product to be free from defects in material and workmanship, under normal use and service, for one year to the original purchaser. At any time within one year from date of delivery to the original purchaser, the company will furnish for the Castex product a replacement part. Such replacement part will be furnished to the owner and charged, including transportation charges, through any authorized Castex distributor or F.O.B. the factory. If the part is returned for inspection by the factory and is found to be defective the owner will be credited for the part, labor (as specified in the Warranty Flat Rate Schedule) and normal transportation charges only. Parts replaced or repaired under warranty are fully guaranteed for the remainder of the original warranty period. Replacement parts that have become defective through wear or abuse are not included in this warranty. (See owner's manual to prevent abuse.) This warranty does not apply to damage caused by accident, misuse, negligence, abuse, fire, or to any Castex product which has been repaired by other than an authorized Castex distributor or factory personnel. Because this product is intended for commercial and/or industrial use, no warranty is extended to persons purchasing or using the equipment for personal, family, or household uses. This warranty is void if products are used for any purpose other than which was intended, and it is void if any cleaning compound other than Castex or Castex approved products are used. There are no other warranties expressed or implied, including any implied warranties of merchantability or fitness for a particular purpose.