

Castex®

WD85-15/05

Wet/Dry Vacuum

MODEL: WD08151C & OSWD08515C

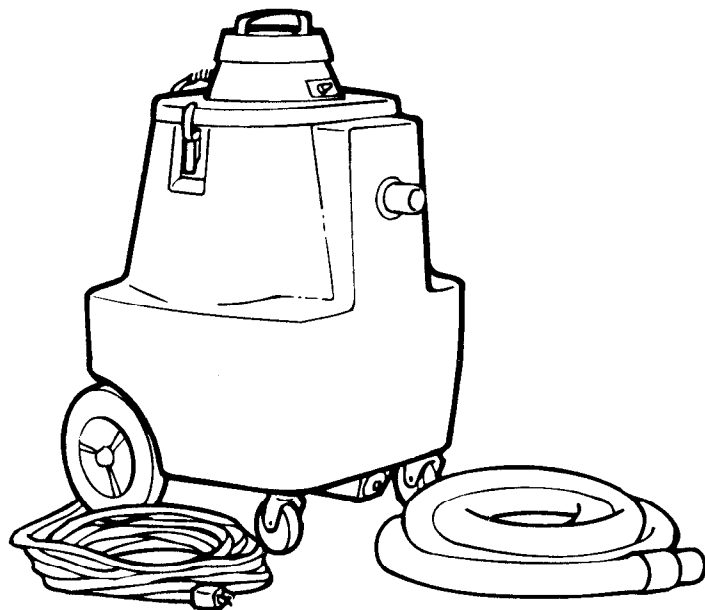
Operator & Parts Manual

Starting Serial No.: WDO851906IM

Record Serial No. Here: _____



PDF Version of Manual by:
Michigan Company Inc.
2011 N. High St.
Lansing, Mich. 48906
(517) 484-9312
<http://www.Michco.Com>
Email: Shop@Michco.Com
(c) 1998 by Michco & Others.



CASTEX INCORPORATED
12875 RANSOM STREET
HOLLAND MI 49424

A **TENNANT** COMPANY

1-800-522-7839
616-786-2330
FAX: 1-800-678-4240
CUSTOMER SERVICE: 1-800-365-6625

173232
Rev. 01 (08-95)

A. SET-UP AND OPERATION:

1. Carefully unpack and inspect your vacuum for shipping damage. Each unit is tested and thoroughly inspected before shipment, and any damage is the responsibility of the delivering carrier. If you do find damage, notify the delivering carrier IMMEDIATELY.
2. Install the float and float cage to the head assembly. When installing float, make sure the weighted bolt in the float faces away from the vacuum head. Remove the nut from the tensioning screw on the float cage. The float cage will now snap onto the bottom of the head assembly. Thread the nut onto the tension screw and tighten until the float cage is firmly attached to the vacuum head.
3. Plug the Power Cord into a grounded, (earthed), 120 volt outlet. See **Figure 1**.

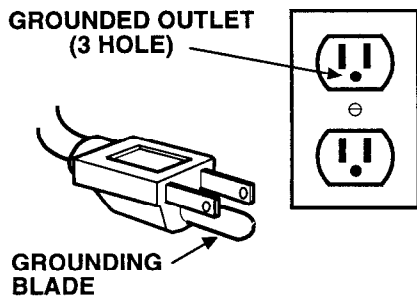


Figure 1

WARNING!!! To avoid serious personal injury:

Do not expose to rain. Store indoors. Disconnect power if machine is left unattended. Plug into grounded outlets only. Do not use an adapter or remove ground pin on plug. Do not use if cord is damaged. Disconnect power before servicing. Electrical service must be performed by an authorized service station or electrician. Do not use machine to recover hazardous or flammable materials. Do not use where explosive vapors or dust are present in the air. Do not allow machine to freeze.

4. For dry vacuuming, always use disposable paper filters in addition to the cloth wet/dry filter bag. Disposable paper filter bags slide over the intake elbow. For wet vacuuming, remove the paper filter bag.
5. Place the vacuum head on top of the tank and secure it using the clamps on either side of the tank.
6. Attach the swivel cuff end of the hose to the intake on the front of the tank.
7. Check the drain plug located on the lower front of the tank. Make sure this plug is secure. If it is loose, tighten it by rotating locking handle clockwise.

B. ROUTINE MAINTENANCE:

1. Clean the cloth filter bag frequently by shaking dust and debris from it. The filter bag can be washed out using a mild soap and water. Using disposable paper bags will help keep the filter bag clean.

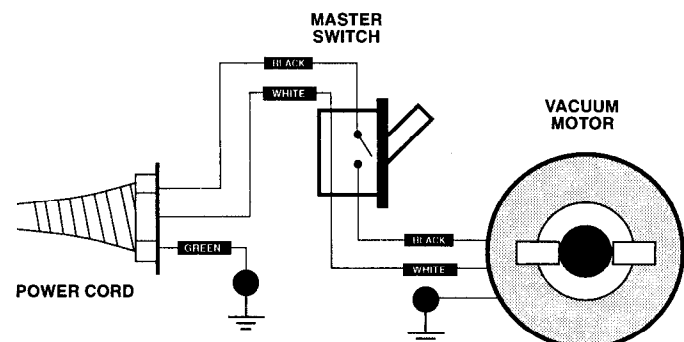
WARNING!!! To avoid serious personal injury, never clean the cloth filter bag using any flammable chemicals. Fumes from the cleaning chemicals may cause an explosion inside the vacuum.

2. There is a plastic tubular screen and a foam filter on the float assembly. This keeps debris from entering during wet pickup and damaging the vacuum motor. Periodically remove the filter assembly and clean the screen and foam filter for top performance. Be sure to install the filter assembly with the foam filter, screen and float before using the vacuum again.
3. If water gets drawn into the vacuum head, turn the power off immediately. Remove the head assembly from the tank and place it on the floor. Turn on the power for three minutes to blow any liquid out of the vacuum motor.

IMPORTANT: If you are vacuuming up liquids which may cause foaming, be sure to use a quality defoamer chemical. Foam will not shut off the float and will be drawn into the vacuum motor. Damage due to foam WILL NOT BE COVERED BY WARRANTY.

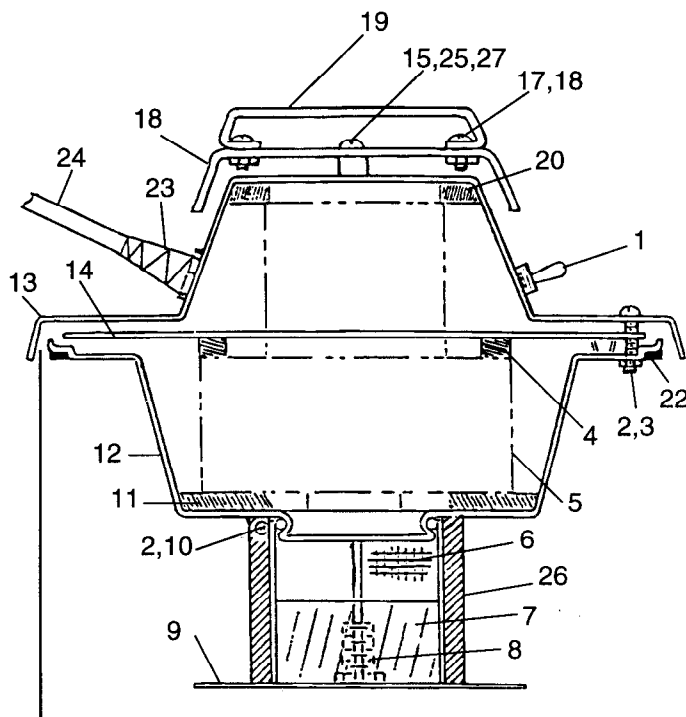
4. If vacuum performance decreases during operation, turn off power, remove the head assembly from the tank and inspect the intake elbow for blockage. If the intake area is open, check the hose for blockage or damage.
5. Empty the tank after each use and rinse it to prevent odor buildup.

WIRING DIAGRAM



VACUUM HEAD PARTS LIST

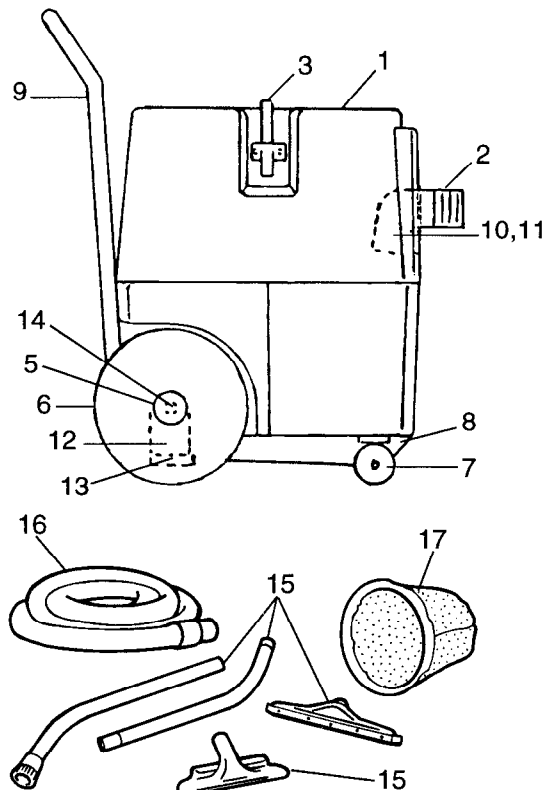
ITEM #	DESCRIPTION	PART#	QTY.
1.	TOGGLE SWITCH	MS859	1
2.	LOCK NUT, STAINLESS STEEL	140552	7
3.	MACHINE SCREW, STAINLESS STEEL	MS111	6
4.	GASKET 5085-5105	MS112	1
	GASKET WD130	MS204	1
5.	MOTOR, VAC 115V	630187	1
	BRUSH, CARBON	190155	1
	MOTOR, VAC WD105	MS206	1
	BRUSH, CARBON	190161	1
	MOTOR, VAC	22829	1
	BRUSH, CARBON	190157	1
	MOTOR, VAC 220V	600435	1
	BRUSH, CARBON	600436	1
6.	PLASTIC SCREEN	MS114	1
7.	FLOAT	MS115	1
8.	FLOAT BOLT	MS116	1
9.	FLOAT CAGE	MS117	1
10.	MACHINE SCREW, STAINLESS STEEL	MS111	1
11.	GASKET 5085-5105	MS860	1
	GASKET WD130	MS209	1
12.	BOTTOM SPINNING	MS121	1
13.	OUTSIDE SPINNING	MS861	1
14.	MOTOR SPINNING	MS123	1
15.	SPEED NUT	MS124	3
16.	TOP SPINNING	MS862	1
17.	SCREW, 1/4"	MS126	2
18.	NUT, 1/4"	MS127	2
19.	TOP HANDLE	MS863	1
20.	TOP GASKET 5085	MS129	2
21.	WIRE CONNECTOR (NOT SHOWN)	MS864	1
22.	GASKET	MS132	1
23.	STRAIN RELIEF & NUT	130166	1
24.	POWER CORD, 25'	MS865	1
25.	TAPPING SCREW, 1" (850)	MS866	3
26.	FOAM FILTER	MS163	1
27.	SPACER 3/8"	MS867	3
	SPACER 5/8"	MS868	3



When changing motor, DO NOT over tighten screws to the point of closing off the air space. Check with a piece of wire or paper clip to make sure there is an opening.

TANK AND TOOLS PARTS LIST

ITEM #	DESCRIPTION	PART#	QTY.
1.	TANK, 15 GALLON	MS515	1
	TANK, 5 GALLON	MS520	1
2.	INTAKE	25202	1
3.	LATCH	MS138	2
5.	HUB CAP	MS140	2
6.	WHEEL, 8"	MS869	2
7.	CASTER	MS142	2
8.	DRAIN PLUG	MS108	1
9.	HANDLE	MS513	1
10.	DEFLECTOR ELBOW	MS144	1
11.	INTAKE GASKET	MS145	1
12.	HANDLE BRACKET	MS146	2
13.	SCREW, 1/4-20 X 1 3/4"	MS870	2
14.	AXLE, 15 GAL TANK	MS871	1
	AXLE, 10/5 GAL TANK	MS139	1
15.	KIT, TOOL WAND W/CRPT & FLOOR ATT	190142	1
	WAND 2-PIECE	190722	1
	TOOL, RUG 11" W/SLEEVE	13841	1
	SQUEEGEE, 14" PUSH/PULL	13840	1
16.	HOSE, 1/1/2"X10' WHITE W/SWIVEL CUFF	180481	1
17.	CLOTH FILTER BAG	MS105	1
	PAPER FILTER BAG (NOT SHOWN)	MS106	1
	BAG RING (NOT SHOWN)	MS148	1



TROUBLE-SHOOTING GUIDE

PROBLEM	CAUSE	SOLUTION
Motor will not run	1. Circuit overloaded.	1. Check circuit breakers in building. Also check number of appliances plugged in on same circuit.
	2. Switch broken.	2. Replace switch.
	3. Loose or broken wiring.	3. Check wiring with WIRING DIAGRAM. Repair any loose or broken wires. Also inspect the power cord.
	4. Vacuum motor is faulty.	4. Replace vacuum motor.
Motor runs but little or no suction.	1. Hose is clogged or holes in hose.	1. Clear hose or replace it.
	2. Intake elbow is clogged.	2. Remove hose from the elbow and check for clogging material.
	3. Drain plug is loose or open.	3. Tighten the drain plug.
	4. Vacuum head is not securely latched onto the tank.	4. Latch both latches down securely.
	5. There is a worn gasket which is leaking air.	5. Inspect all gaskets, and replace if necessary.

THE CASTEX WARRANTY POLICY

An Ongoing Commitment to Customer Satisfaction

10 YEAR: Subject to the conditions stated below, Nobles warrants the rotationally molded polyethylene and fiberglass housings, aluminum frames and steel chassis to be free from defects in materials and workmanship for 10 full years to the original purchaser.

3 YEAR: Castex offers a full 3 year warranty to the original purchaser on all other Castex components as outlined below.

Exceptions: A 5-year warranty is extended to the original purchaser against manufacturer's defects and workmanship and applies to all components of the Cyclone Dryer and the pump motor on the Magnum, Magnum DV and Magnum DVA.

A 1-year warranty is extended to the original purchaser against manufacturer's defects and workmanship and applies to :

- All other components of the Anser, Scout 27, Lite Trac, TV1200, battery chargers, and all accessories.
- Batteries are pro-rated for 1-year.
- Any equipment used for rental purpose.

Subject to the conditions and exceptions stated in this warranty, Castex Incorporated warrants the Castex product to be free from defects in material and workmanship, under normal use and service, for three years to the original purchaser. At any time within three years from date of delivery to the original purchaser, the company will furnish for the Castex product a replacement part. Such replacement part will be furnished to the owner and charged, including transportation charges, through any authorized Castex distributor or FOB the factory. If the original part is returned within three years from date of delivery for inspection by the factory and is found to be defective, the owner will be credited for the cost of the replacement part, labor (as specified in the Warranty Flat Rate Schedule) and normal transportation charges only. Parts replaced or repaired under warranty are fully guaranteed for the remainder of the original warranty period. Replacement parts that have become defective through wear or abuse are not included in this warranty. See owner's manual to prevent abuse. This warranty does not apply to damage caused by accident, misuse, negligence, abuse, fire or to any Castex product which has been repaired by other than an authorized Castex distributor or factory personnel. Because this product is intended for commercial and/or industrial use, no warranty is extended to persons purchasing or using the equipment for personal, family or household uses. This warranty is void if products are used for any purpose other than that which was intended, and it is void if any cleaning compound other than Castex or Castex-approved products are used. There are no other warranties expressed or implied, including any implied warranties of merchantability or fitness for a particular purpose. Revised 06/94.

Castex reserves the right to make changes and improvements to its equipment without notice.

CASTEX INCORPORATED

12875 RANSOM STREET
HOLLAND MI 49424

A  COMPANY

1-800-522-7839

616-786-2330

FAX: 1-800-678-4240

CUSTOMER SERVICE: 1-800-365-6625