



Electronic Service Manuals

This electronic document is provided as a service to our customers. We do not create the contents of the information contained in this document. Should you have detailed questions pertaining to the information contained in this document, you may contact Michco, or the manufacturer which provided the original information in this electronic deliverable. Michco's only part in this electronic deliverable was the electronic assembly process. By providing this manual on line we are not guaranteeing parts availability.

You may contact Michco through the following methods:

Phone (517) 484-9312 or (800) 331-3339

2011 N. High St. -- Lansing, Michigan -- 48906

Fax: (517) 484-9836

Email: CustServe@Michco.com

Web site: www.Michco.Com

Parts Web site: www.FloorMachineParts.Com

Order Parts on Line at:

www.FloorMachineParts.Com

Directly to Parts & Service:

By Email: **Shop@Michco.com**

By Fax: (517) 702-2041

By Voice: Use numbers above.

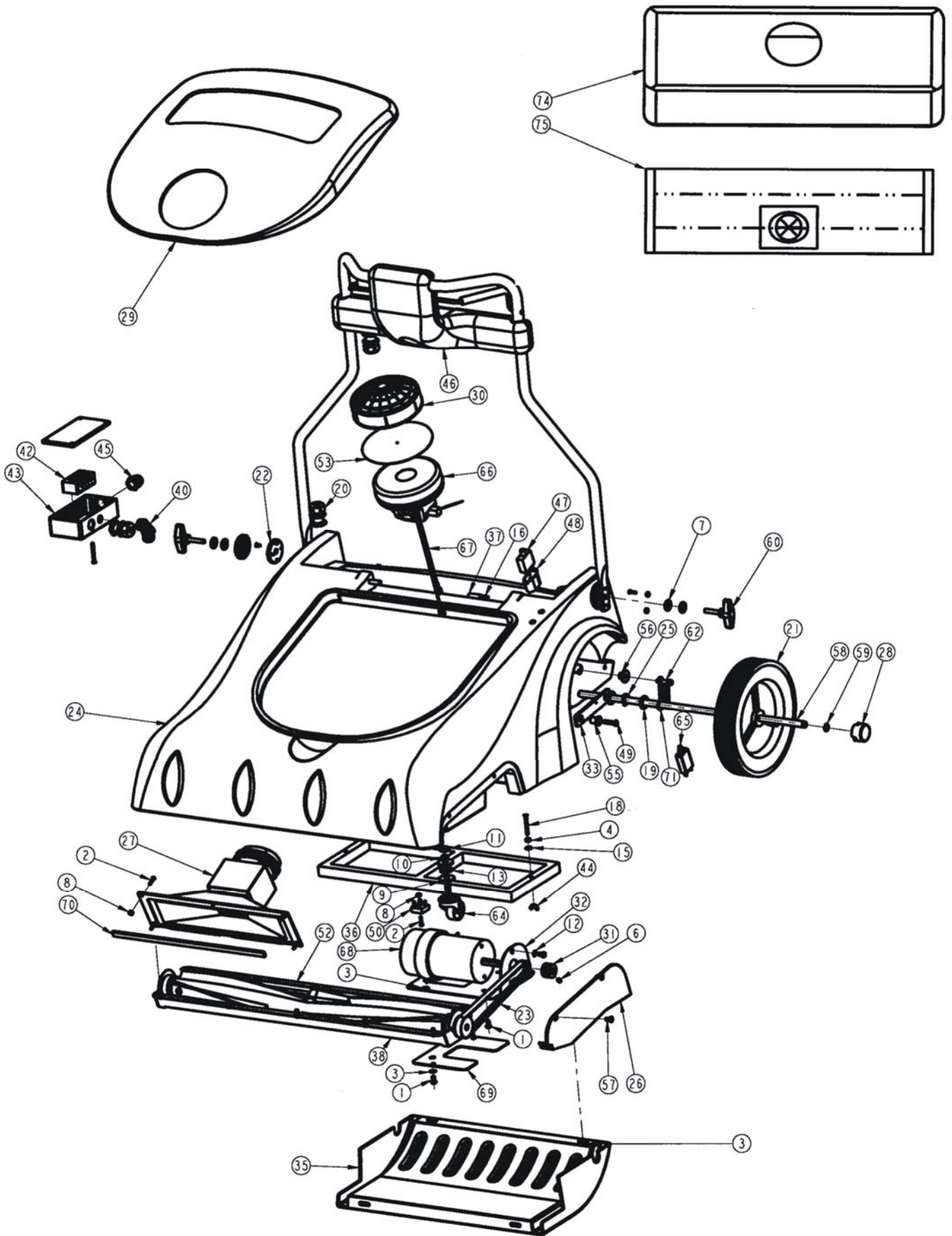
Serving the Cleaning Industry Since 1922

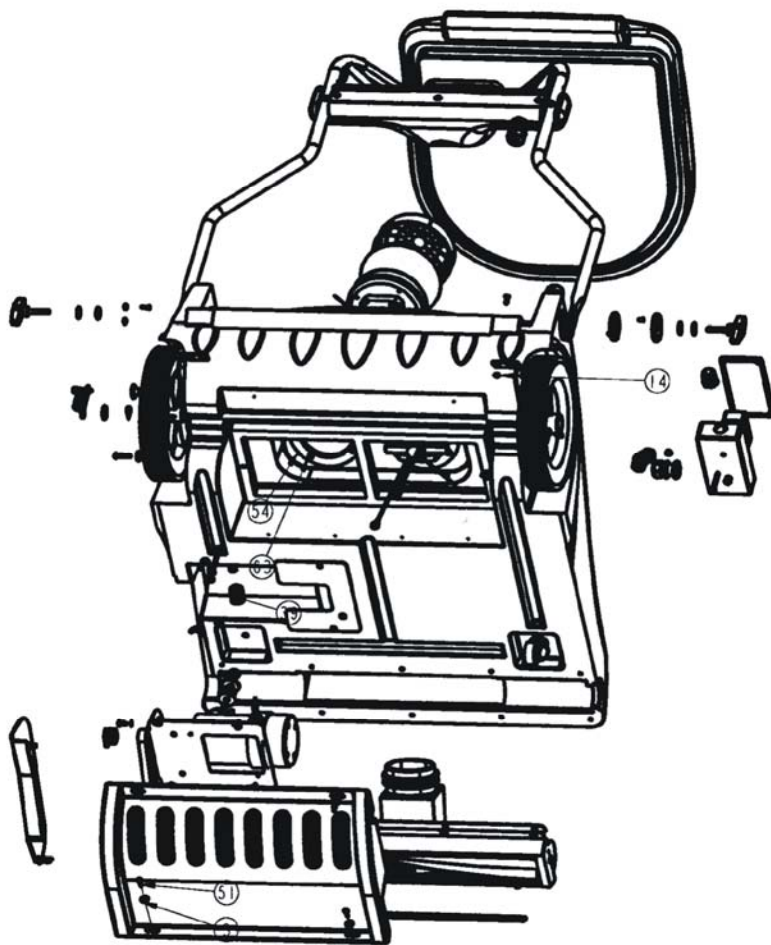
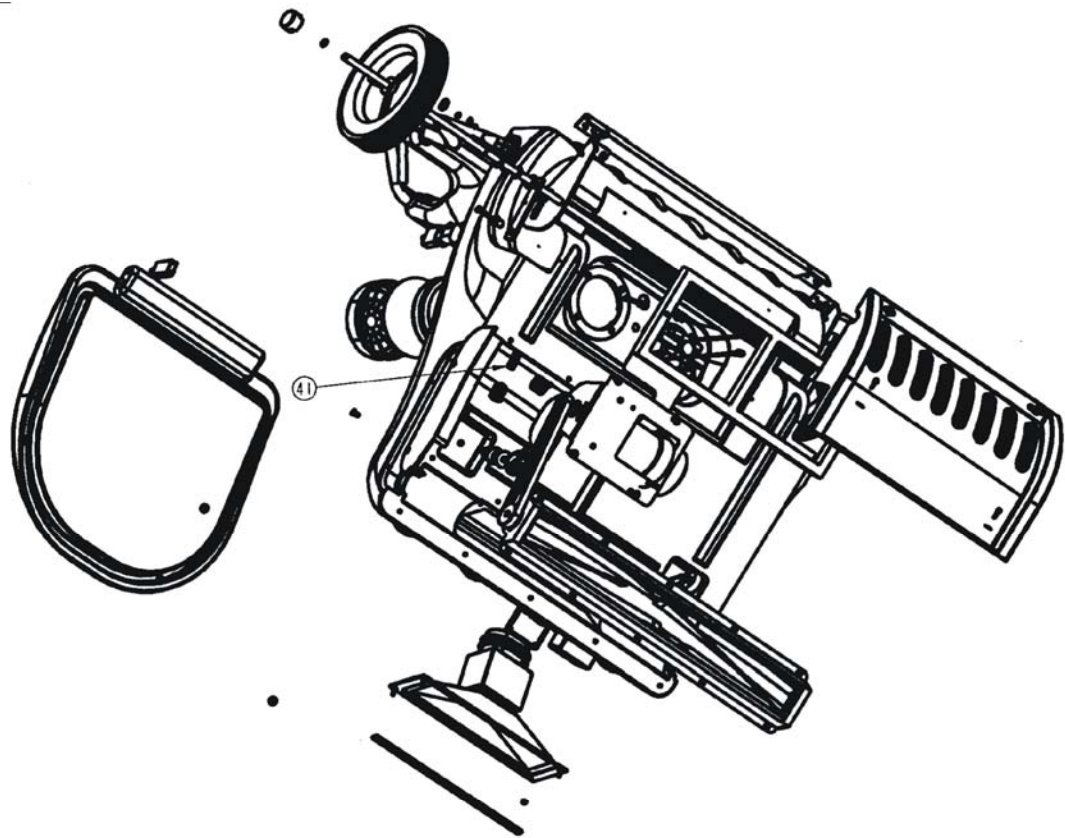
Notice: All copyrighted material remains property of original owners, all trademarks are property of respective owners. Manuals are subject to Manufacturer's reproduction limitations. Originals or reproductions were provided by manufacturers through a request. We make no warranty as to the correctness of information provided in this document and you assume all risk. By placing these manuals on line we are not declaring our corporation to be an manufacturer authorized dealer or provider, please check our web site for authorized manufacturers we represent.

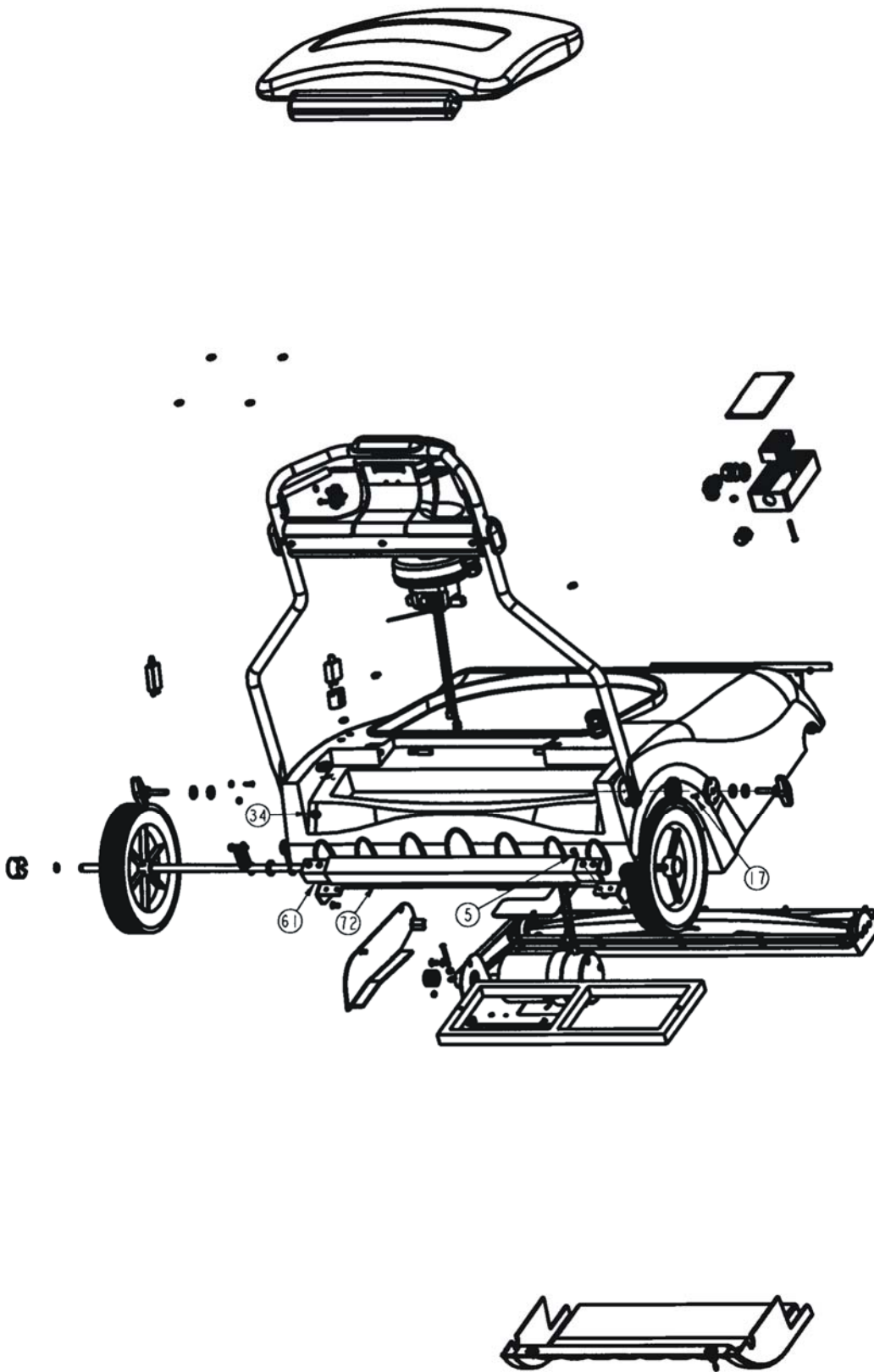
CLEAN MAX

WIDE AREA VAC

CM-WAV







FULL ASSEMBLY PARTS LIST

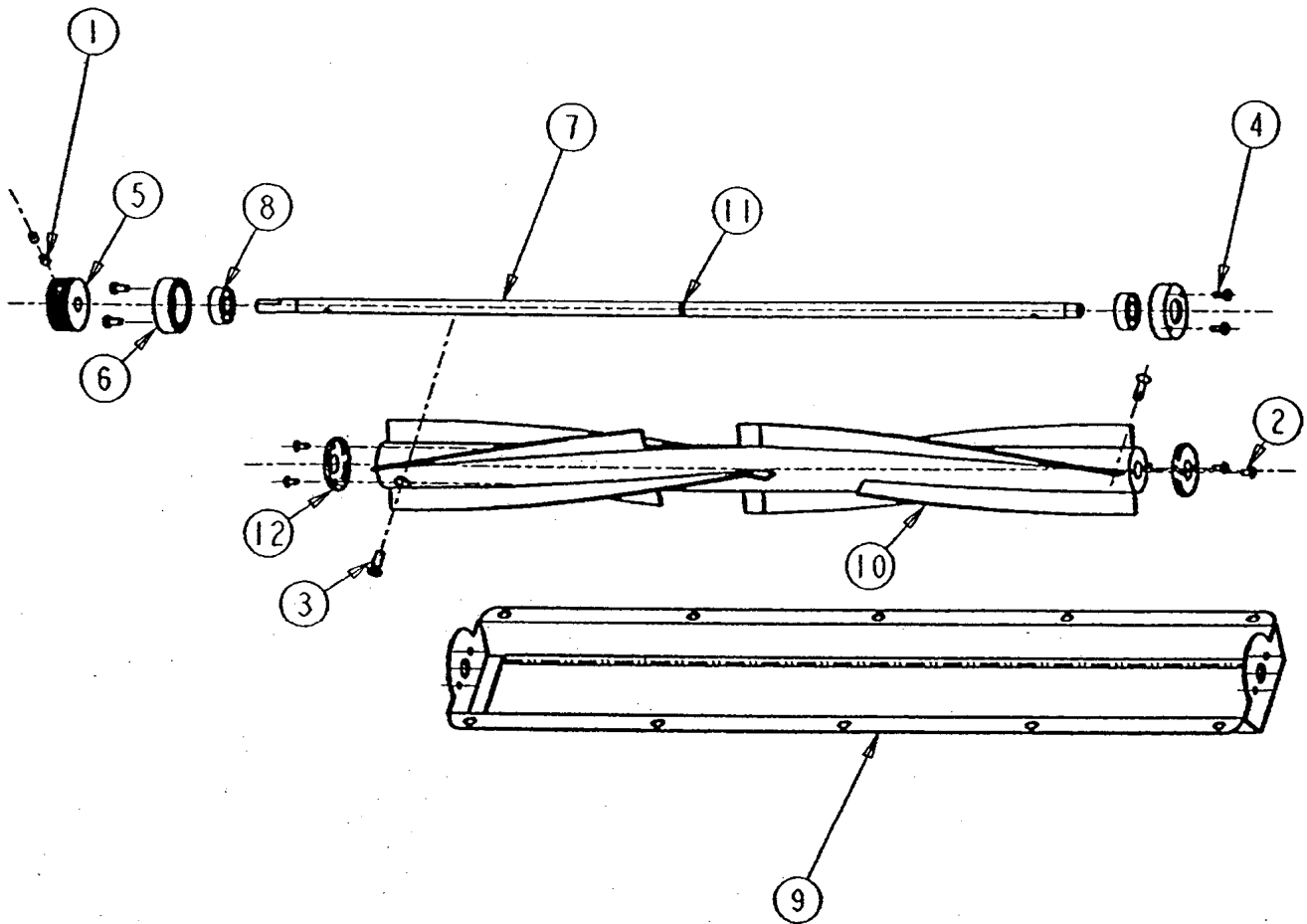
ITEM	QTY	PART #	DESCRIPTION
1	16	00086	SCREW - PHILLIPS ROUND HEAD MACHINE 1/4-20 X 1/2
2	5	00600	SCREW - SLOTTED ROUND HEAD MACHINE #8-32 X 3/4
3	4	00851	WASHER - PLAIN 1/4
4	4	01604	NUT – FINISHED HEX
5	4	01993	SCREW - PHILLIPS FLAT HEAD MACHINE #10-24 X 3/4
6	1	02011	SET SCREW, BRUSH PULLEY
7	4	02568	WASHER - PLAIN 5/16
8	5	02956	NUT – HEX. LOCK (KEPS) *8-32
9	4	03321	WASHER - PLAIN .391
10	2	03536	WASHER - LOCK 3/8"
11	2	05025	NUT – HEX. LOCK JAM
12	2	07870	WASHER - LOCK (I/T) 1/4"
13	2	10373	WASHER - PLAIN .500
14	4	10894	NUT – HEX. LOCK (P/T)
15	2	11385	WASHER SEALING
16	2	15357	SPRING - LATCH RELEASE
17	8	15475	SCREW – PHILLIPS FLAT HEAD MACHINE #8-32 X 3/8
18	4	16433	SCREW – PHILLIPS FLAT HEAD MACHINE #10-32 X 1-3/4
19	4	16581	WASHER – PLAIN 1/2"
20	4	18793	STRAIN RELIEF (LIQ. TITE)
21	2	19797	WHEEL 10" PLASTIC HUB 125 LB
22	2	19798	BRACKET GROOVED HANDLE
23	1	19802	BELT, BRUSH DRIVE-POLY
24	1	19814	CHASSIS, MAIN - ROTO MOLDED
25	2	19818	SPRING, 1/2 CURVED (VEND)
26	1	19819	COVER, BELT ROTO-MOLDED
27	1	19822	INTAKE DUCT
28	2	19831	HUB CAP, WHEEL WAV
29	1	B353-4120	LID, MOLDED (WAV)
30	2	19834	FILTER VAC. MTR. INTAKE
31	1	19835	PULLEY, BRUSH DRIVE MOTOR
32	1	19836	MOUNT, BRUSH MOTOR (STEEL)
33	2	19841	ARM , WHEEL PIVOT - 3/16 X 1
34	1	19850	SWITCH, ON/OFF
35	1	19854	COVER EXHAUST .13" NOM. THK
36	1	19855	FILTER, WAV EXHAUST
37	2	19864	PIN, LID HINGE STEEL .340"
38	1	19870	ASS'Y – BRUSH
39	1	19875	FITTING STRAIGHT (BLK PLSTC)
40	1	19876	FITTING, ELBOW (FOR CABLE)
41	1	19878	CONDUIT - CABLE 10" LG.
42	1	19879	BLOCK TERMINAL
43	2	19880	BOX - ELECTRICAL
44	2	19975	NUT - WING (10-32) ZINC PL
45	1	19977	STRAIN RELIEF (PLACTIC)
46	1	19984	ASS'Y HANDLE
47	1	19990	CIRCUIT BREAKER

FULL ASSEMBLY PARTS LIST - CONTINUED

48	1	19991	BOOT, RUBBER – ELECTRICAL CONNECT
49	2	19999	SCREW - PHILLIPS ROUND HEAD MACHINE 1/4-20 X 1-1/8
50	1	24185	RECTIFIER 60 AMP
51	4	30018	SCREW - THUMB W/ SHOULDER #10-32 X 1/2"
52	1	30077	GASKET - SHOE (POLY FOAM)
53	2	30088	FILTER - PRE
54	2	30089	GASKET - MOTOR (POLY FOAM)
55	2	30461	SLEEVE PIVOT .5"(.25"ID)
56	2	30464	SLEEVE PIVOT (LRG).312"ID
57	2	30467	SCREW - PHIL. FLAT HD MACH
58	1	30491	ASS'Y AXLE WHEEL
59	2	30507	SNAP RING 1/2" EXTERNAL
60	2	30558	KNOB - HANDLE ADJ.(BLACK)
61	1	30595	PEDAL - FOOT ADJ. (STEEL)
62	2	30617	SCREW - SOCKET HD SHOULDER 5/16 DIA. X 1-1/2"
63	8	30620	SCREW – PHILLIPS PAN HEAD TAPTITE #10-16 X 3/4
64	1	31209	WHEEL, CASTER
65	1	31236	CIRCUIT BREAKER, 3 AMPS
66	2	31540	MOTOR – VACUUM (120V)
67	4	31544	LEAD WIRE – 9" (BLACK)
68	1	32419	MOTOR – BRUSH 115VDC
69	1	32456	PLATE – MOTOR COVER (WAV)
70	1	80605	GASKET MAT'L – NEOPRENE
71	2	30466	SPRING TENSION
72	1	30596	COVER PEDAL
73	1	19473	CORD - POWER (115V) 14/3 75' (MALE PLUG) YELLOW
74	1	19816	BAG, CLOTH
75	4	90701	BAG – PAPER, DISPOS – 10 PACK
(76)	1	18706	WIRE TIES 15" BLACK
(77)	1	30008	DECAL, WIRING
(78)	1	30017	WIRING HARNESS – MAIN BODY
(79)	1	30078	GASKET - HOOD 54" (L-200)
(80)	1	30442	DECAL REPLACEMENT PARTS
(81)	1	30618	DECAL – CARPET LEVEL
(82)	1	15245	TERMINAL – RING #10-16/14 GA (INS)

() ITEMS NOT SHOWN

* ITEM TO BE USED WHERE APPLICABLE

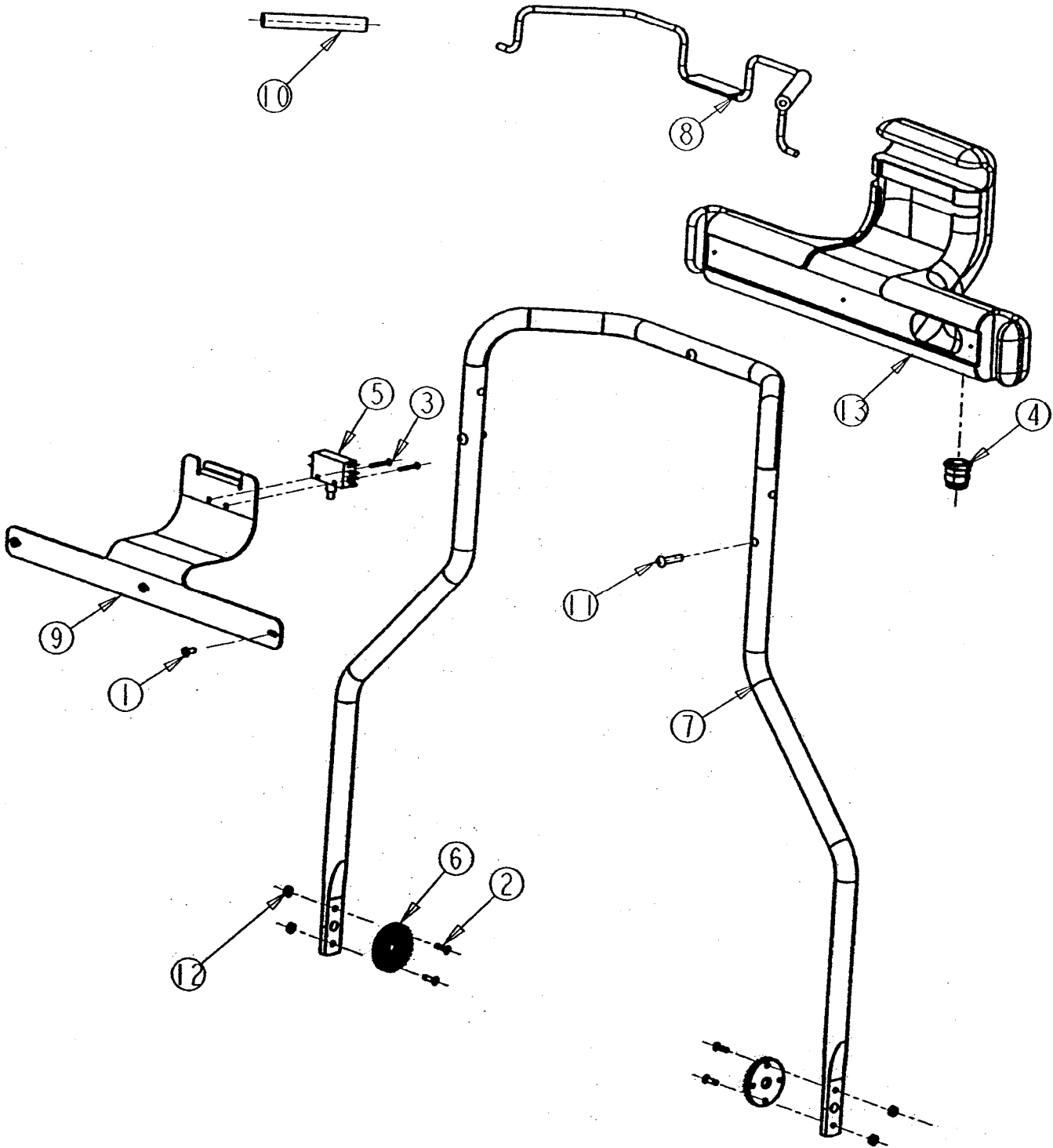


BRUSH ASSEMBLY PARTS LIST

(REF. DRAWING 19870)

<u>ITEM</u>	<u>QTY</u>	<u>PART #</u>	<u>DESCRIPTION</u>
1	2	02011	SET SCREW, BRUSH PULLEY
2	4	07535	SCREW #8-15 X .50 LG. (SHEET METAL)
3	2	11276	SCREW 1/4-20 X 7/8" LG. FLAT HEAD
4	4	16142	SCREW #10-32 X 1/2" LG. PAN HD (PHIL)
5	1	19804	BRUSH PULLEY
6	2	19805	BLOCK, BRUSH BEARING
7	1	19808	AXLE, WAV BRUSH
8	2	19809	BEARING, WAV BRUSH
9	1	19810	SHOE, WAV BRUSH MOUNT
10	1	19811	BRUSH 20" WAV
11	1	19838	"O" RING
12	2	19848	THREAD GUARD

HANDLE ASSEMBLY
(DRWG. P/N 30873)



HANDLE ASSEMBLY PARTS LIST

(REF. DRAWING 30873)

<u>ITEM</u>	<u>QTY</u>	<u>PART #</u>	<u>DESCRIPTION</u>
1	3	03660	#10-24 X 7/16" PAN HEAD SCREW
2	4	05769	#8-32 X 5/8" FLAT HEAD SCREW
3	2	06686	#6-32 X 3/4" PAN HEAD SCREW
4	1	18793	STRAIN RELIEF, CONTROL PANEL
5	1	19357	SWITCH, BRUSH
6	2	19798	BRACKET, HANDLE ADJUSTMENT
7	1	19829	HANDLE, MAIN STEEL TUBE
8	1	19849	TRIGGER, BRUSH SWITCH
9	1	19869	COVER, CONTROL PANEL
10	2	19971	FOAM GRIP TRIGGER
11	3	19999	1/4-20 X 1-1/8" ROUND HEAD SCREW
12	4	30074	HEX NUT LOCK
13	1	19813	CONTROL PANEL, WAV
(14)	1	19996	WIRE HARNESS

* ITEMS TO BE USED WHERE APPLICABLE

() ITEMS NOT SHOWN

WIRING DIAGRAM

Wide Area Vacuum
(Ref. Drawing #30008)

