



Electronic Service Manuals

This electronic document is provided as a service to our customers. We do not create the contents of the information contained in this document. Should you have detailed questions pertaining to the information contained in this document, you may contact Michco, or the manufacturer which provided the original information in this electronic deliverable. Michco's only part in this electronic deliverable was the electronic assembly process. By providing this manual on line we are not guaranteeing parts availability.

You may contact Michco through the following methods:

Phone (517) 484-9312 or (800) 331-3339

2011 N. High St. -- Lansing, Michigan -- 48906

Fax: (517) 484-9836

Email: CustServe@Michco.com

Web site: www.Michco.Com

Parts Web site: www.FloorMachineParts.Com

Order Parts on Line at:

www.FloorMachineParts.Com

Directly to Parts & Service:

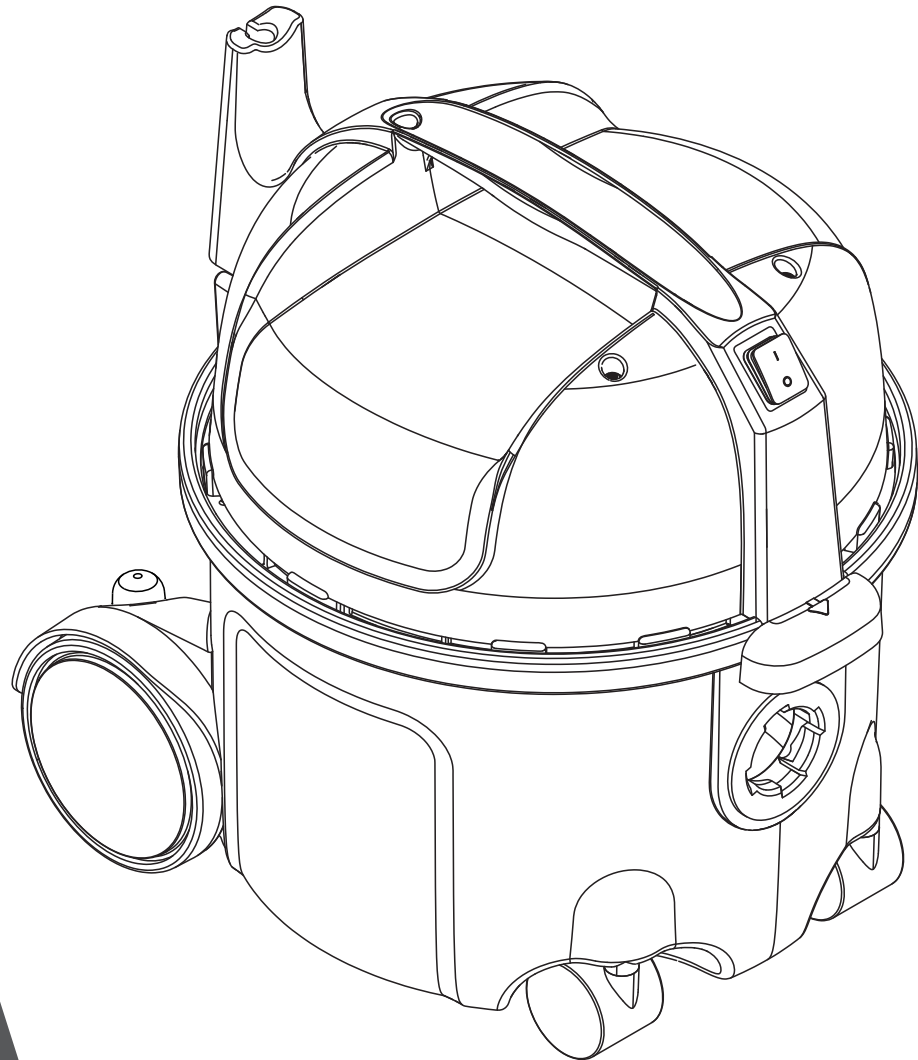
By Email: **Shop@Michco.com**

By Fax: (517) 702-2041

By Voice: Use numbers above.

Serving the Cleaning Industry Since 1922

Notice: All copyrighted material remains property of original owners, all trademarks are property of respective owners. Manuals are subject to Manufacturer's reproduction limitations. Originals or reproductions were provided by manufacturers through a request. We make no warranty as to the correctness of information provided in this document and you assume all risk. By placing these manuals on line we are not declaring our corporation to be an manufacturer authorized dealer or provider, please check our web site for authorized manufacturers we represent.



SPARE PARTS LIST

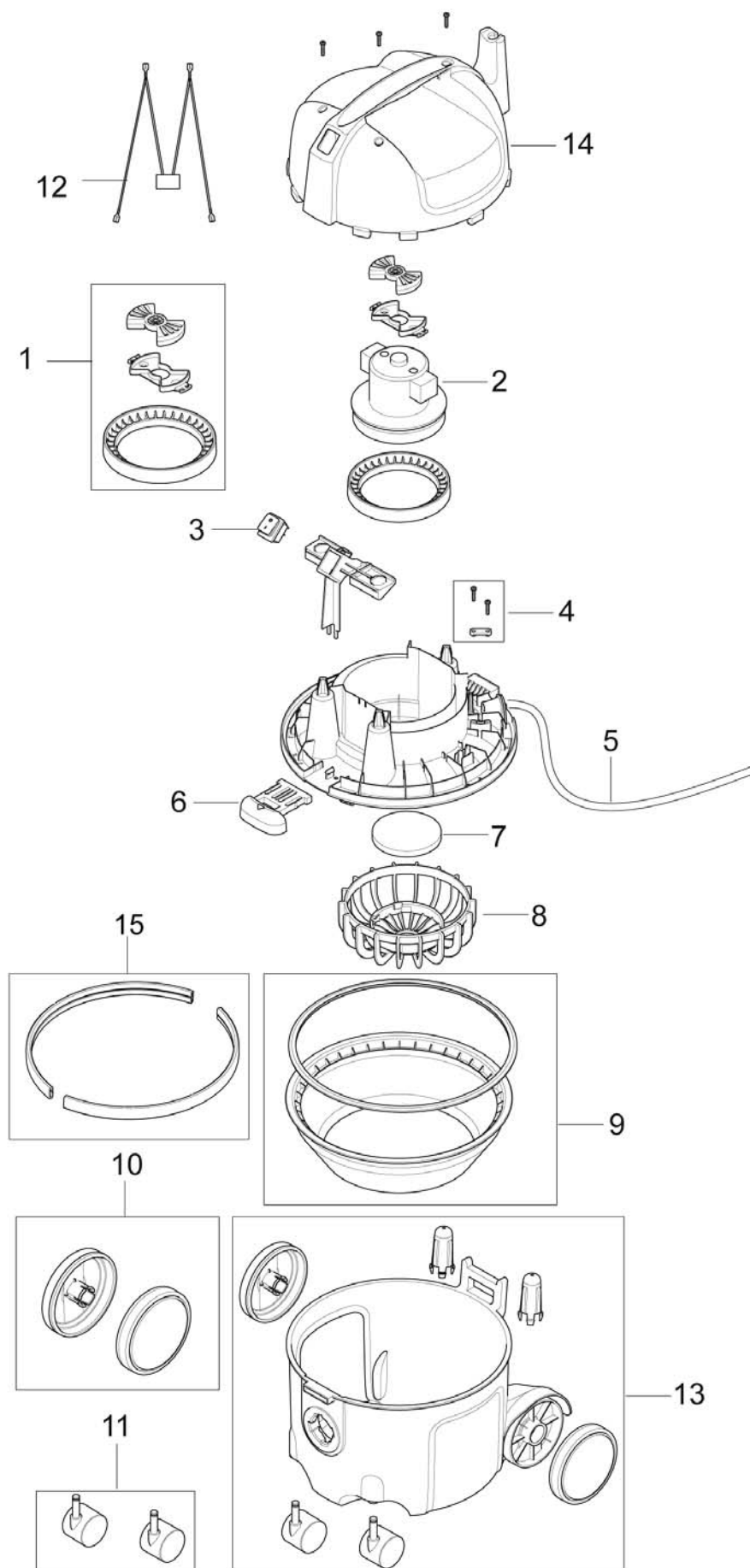
VP300/SALTIX 10 SERIES SPARE PARTS LIST



Table of Contents

VP300 / SALTIX 10

Summary (VP300 / SALTIX 10)	(
Accessories	*
RECOMMENDED SPARE PARTS	,



Summary

VP300 / ÚOŠVQÁ€

19-12-2013

Part List ID
GD11102

1

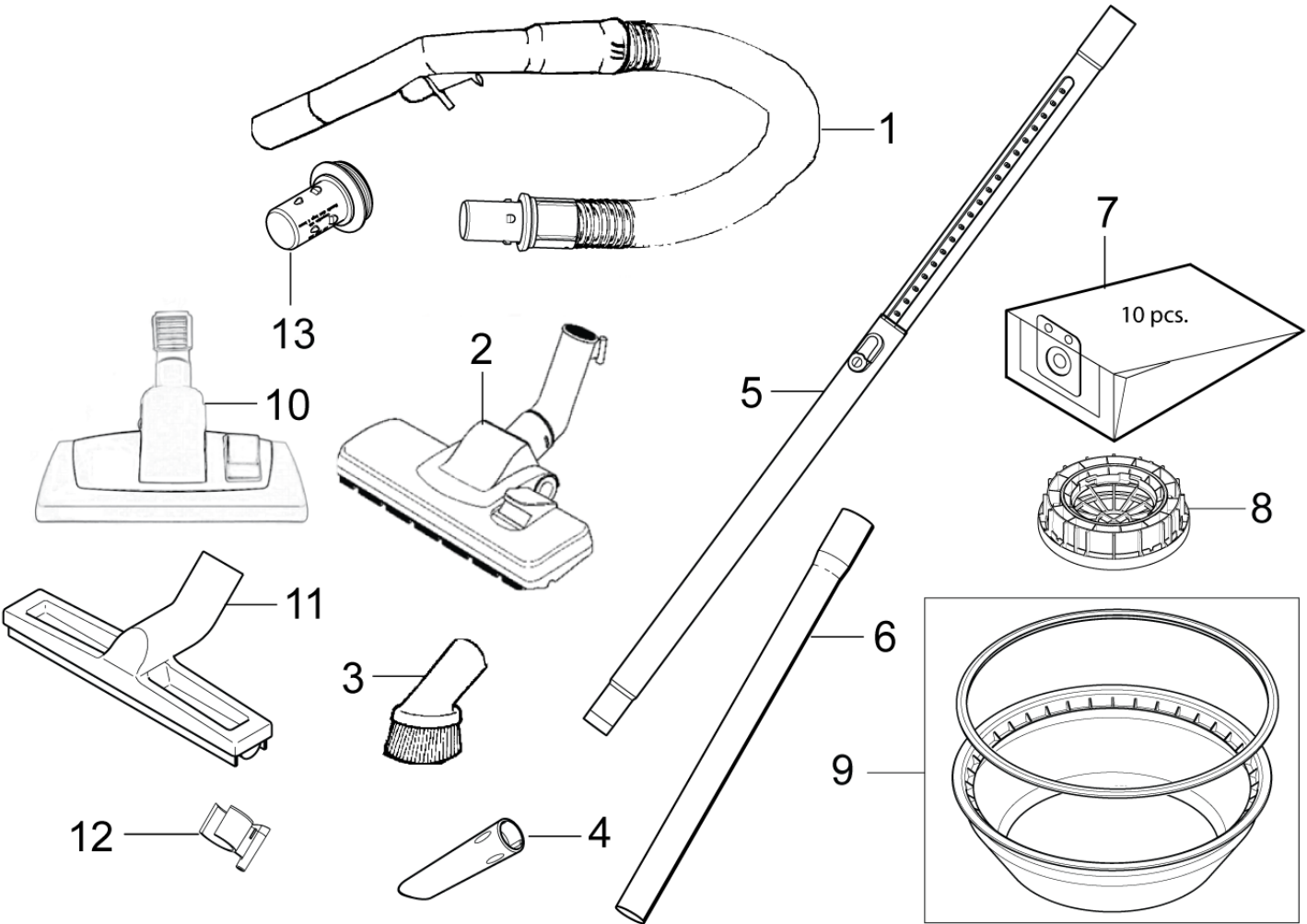
Pos	Part no.	Qty	Description	
0	147 1436 000	1	BOX GD111 & SALTIX 10	
1	147 0660 500	1	MOTOR SUSPENSION KIT GD910	
2	107402675	1	FAN UNIT 1200W TCO KIT	EU
2	107407518	1	FAN UNIT 220-240V 900W CN KIT	CN
2	147 1428 500	1	FAN UNIT 230-240	EU
2	147 1429 500	1	FAN UNIT 110-120V 900W TCO	US
2	147 1430 500	1	FAN UNIT 100V 900W TCO	JP
3	140 9537 500	1	SWITCH TWO POLE 2 PCS	
4	140 6560 500	1	ANTI STRAIN CLIP	
5	107403731	1	CORDSET 15.5 M JP	JP
5	140 3608 600	1	CORD SET 10.5M US/TW	US
5	140 6643 580	1	CORD SET 10.5M UK	UK
5	140 6676 570	1	CORD SET AU NZ 10M	AU
5	140 6800 650	1	CORD SET 10M EU	EU
5	147 0504 540	1	CORD SET 10.5M CHINA	CN
6	147 1409 500	1	LATCH	
7	147 0670 500	1	FILTER MOTOR KIT GD910	
8	147 0669 500	1	BASKET SACK FILTER GD910	
9	147 1432 500	1	SACK FILTER CPL	Accessory
10	140 8458 500	1	WHEEL KIT 2 REAR WHEELS	
11	140 6422 500	1	LINK WHEELS KIT 2 WHEELS	
12	107407519	1	SUPPRESSOR UNIT CCC L350 KIT	CN
12	140 7620 530	1	SUPPRESSOR EU/UK/AU/NZ GWD 350-2/375-2	
13	107406056	1	CONTAINER VP300	
14	107408800	1	COVER TOP FOR VP300 KIT	
14	107410002	1	COVER TOP SALTIX 10 KIT	

Accessories

VP300 / ÚČIŠŤOVAČ

19-12-2013

Part List ID
GD11106



Accessories

VP300 / ÚOŠVQÁ€

19-12-2013

Part List ID
GD11106

1

Pos	Part no.	Qty	Description
1	147 0765 500	1	HOSE CPL BLACK
2	107403122	1	COMB NOZZLE D252 KIT
2	107405141	1	SPAREPART COMBI NOZZLE VC300JP JP
3	140 8244 500	1	BRUSH NOZZLE KIT
4	147 0146 500	1	CREVICE NOZZLE D32 L153 B
5	011 8130 500	1	TELESCOPIC TUBE 32MM GD111, VP300
5	107403804	1	TELESCOPIC TUBE GD111 X-tra, VP300 HEPA
6	011 6431 500	2	TUBE 32MM X 500MM LONG
6	140 8246 040	2	STEEL TUBE 32MM X 500MM
7	140 8618 000	1	DUST BAG 10L 10 PCS GD 2000 SERIES
8	107402902	1	HEPA FILTER BOXED VP300 HEPA
9	147 1432 500	1	SACK FILTER CPL
10	140 8492 510	1	ROLLER COMBI NOZZLE
10	140 8492 520	1	COMBI NOZZLE VP300 HEPA
11	140 6700 540	1	HARD FLOOR NOZZLE
12	147 0585 500	1	PARKING CLIP SVART
13	107401199	1	20 PCS ADAPTER TO USE COMPETITOR BAGS & HOSES

RECOMMENDED SPARE PARTS

VP300 / ÚOŠVQÁ€

19-12-2013

Part List ID

GD11108

1

No Drawing For Part List

RECOMMENDED SPARE PARTS

VP300 / ÚOŠVQAF€

19-12-2013

Part List ID
GD11108

J

Pos	Part no.	Qty	Description
0	107402675	1	FAN UNIT 1200W TCO KIT
0	140 3608 600	1	CORD SET 10.5M US/TW US
0	140 6422 500	1	LINK WHEELS KIT 2 WHEELS
0	140 6560 500	1	ANTI STRAIN CLIP
0	140 6643 580	1	CORD SET 10.5M UK
0	140 6800 650	1	CORD SET 10M EU
0	140 7620 530	1	SUPPRESSOR EU/UK/AU/NZ GWD 350-2/375-2
0	140 8458 500	1	WHEEL KIT 2 REAR WHEELS
0	140 9537 500	1	SWITCH TWO POLE 2 PCS
0	147 0660 500	1	MOTOR SUSPENSION KIT GD910
0	147 0669 500	1	BASKET SACK FILTER GD910
0	147 0670 500	1	FILTER MOTOR KIT GD910
0	147 1409 500	1	LATCH
0	147 1428 500	1	FAN UNIT 230-240
0	147 1429 500	1	FAN UNIT 110-120V 900W TCO US
0	147 1432 500	1	SACK FILTER CPL



USA

Nilfisk-Advance Inc.
14600 21st Avenue North
Plymouth, MN 55447-3408
Tel.: (763) 745 3500
Fax : (763) 745 3718

Canada

Nilfisk-Advance Canada
240 Superior Boulevard Mississauga, ON L5T 2L2
Tel.: 905-564-1149
Fax: 905-564-1030