

Parts and Service Manuals From:



On Line Materials for the Jan San Industry.

Since 1922

**Michigan Company Inc.
2011 N. High St.
Lansing, Mi 48906
(517) 484-9312**

[Http://www.Michco.Com](http://www.Michco.Com)

Email:Shop@Michco.com

Order parts on line or by Phone

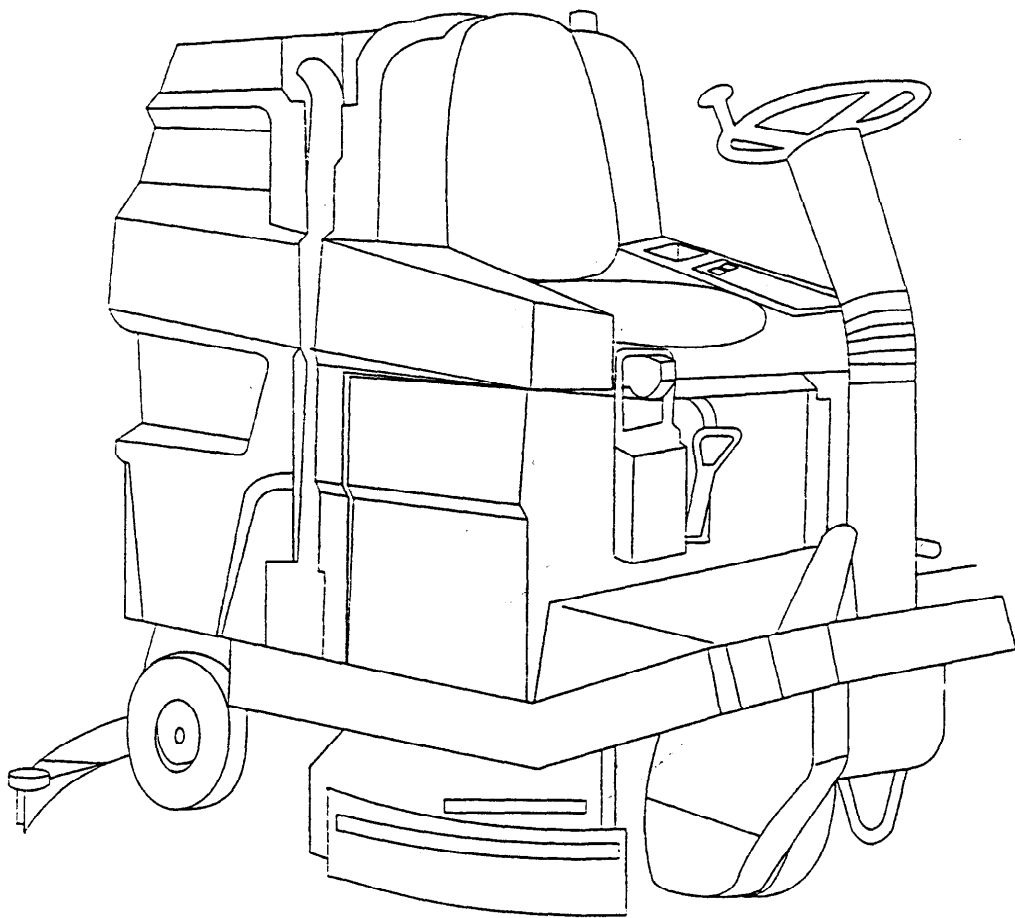
Visa, MasterCard, Amex

Shipping to US addresses only.

Materials contained in this manual Copyright respective manufacturer, PDF version made exclusively by Michco for our customer's use only. Any other use of PDF version violates our PDF copyright.



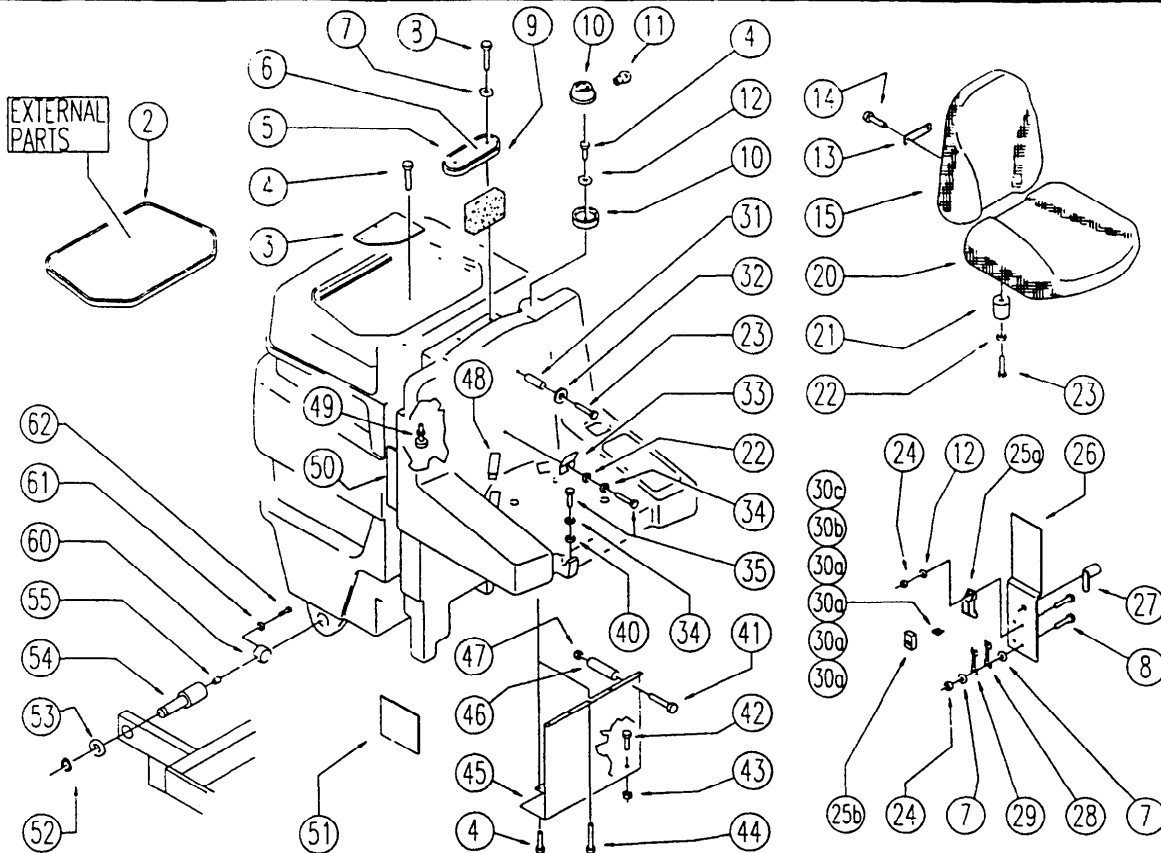
SPARE PARTS



AS 36R RIDER AUTOMATIC

AUTOMATIC-SWEEPING-SCRUBBER

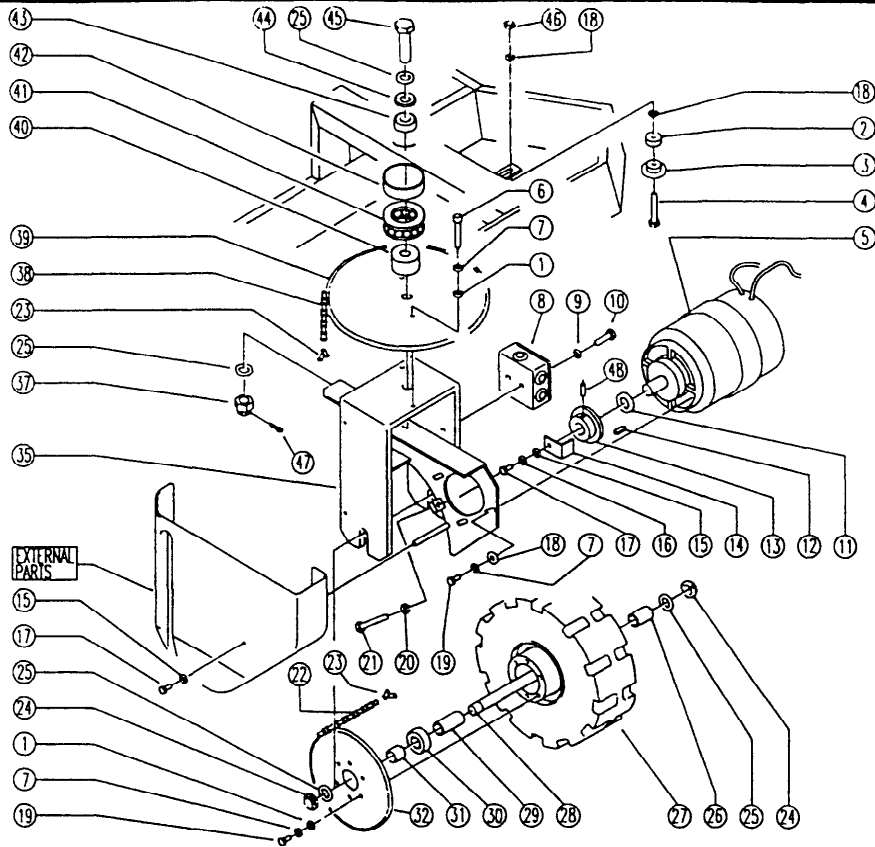
DESCRIPTION: TANK-ACCESSORIES



REF. CODE	DESCRIPTION	QT			
2 SL03274	GASKET	1			
3 SL17363	LID	1			
4 SL04173	GASKET	11			
5 SL03275	SCREW	1			
6 SL17379	LID	1			
7 SL06031	WASHER	6			
8 SL04065	SCREW	6			
9 SL03241	FILTER	1			
10 SL23464	FLASH-LIGHT (n.)	1			
11 SL23464-2	LAMP	1			
12 SL06034	WASHER	3			
13 SL09705	PLATE	1			
14 SL04259	SCREW	1			
15 SL14191-PL	SEAT BACK	1			
20 SL14190-PL	SEAT	1			
21 SL03103	PLUG / STOPPER	4			
22 SL06004	WASHER	4			
23 SL04009	SCREW	6			
24 SL05012	NUT	4			
25a SL23894-1	FUSE-HOLDERS	1			
25b SL23893-2	LID	1			
26 SL09901	LID	1			
27 SL20045	CATCH / LOCK	1			
28 SL23869	FUSE	1			
29 SL23606	FUSE	1			
30a SL23144	FUSE	4			
30b SL23147	FUSE	1			
30c SL23145	FUSE	1			
31 SL07293	SPACER	2			
32 SL06015	WASHER	2			
33 SL09540	PLATE	1			
34 SL06001	WASHER	1			
35 SL04180	SCREW	2			
40 SL06015	WASHER	1			
41 SL04196	SCREW	1			
42 SL04252	SCREW	1			
43 SL05039	NUT	1			
44 SL04223	SCREW	5			
45 SL09694	PLATE	1			
46 SL07337	SPACER	1			
47 SL05011	NUT	1			
48 SL14199	TERMINAL	2			
49 SL23799	FLOAT	1			
50 SL17395	REINFORCEMENT	1			
51 SL17499	PANEL	1			
52 SL11108	RING	2			
53 SL06080	WASHER	2			
54 SL07301	PIN	2			
55 SL07150	BUSHING	2			
60 SL07308	SUPPORT	1			
61 SL06003	WASHER	1			
62 SL04083	SCREW	1			

DESCRIPTION:

WHEEL



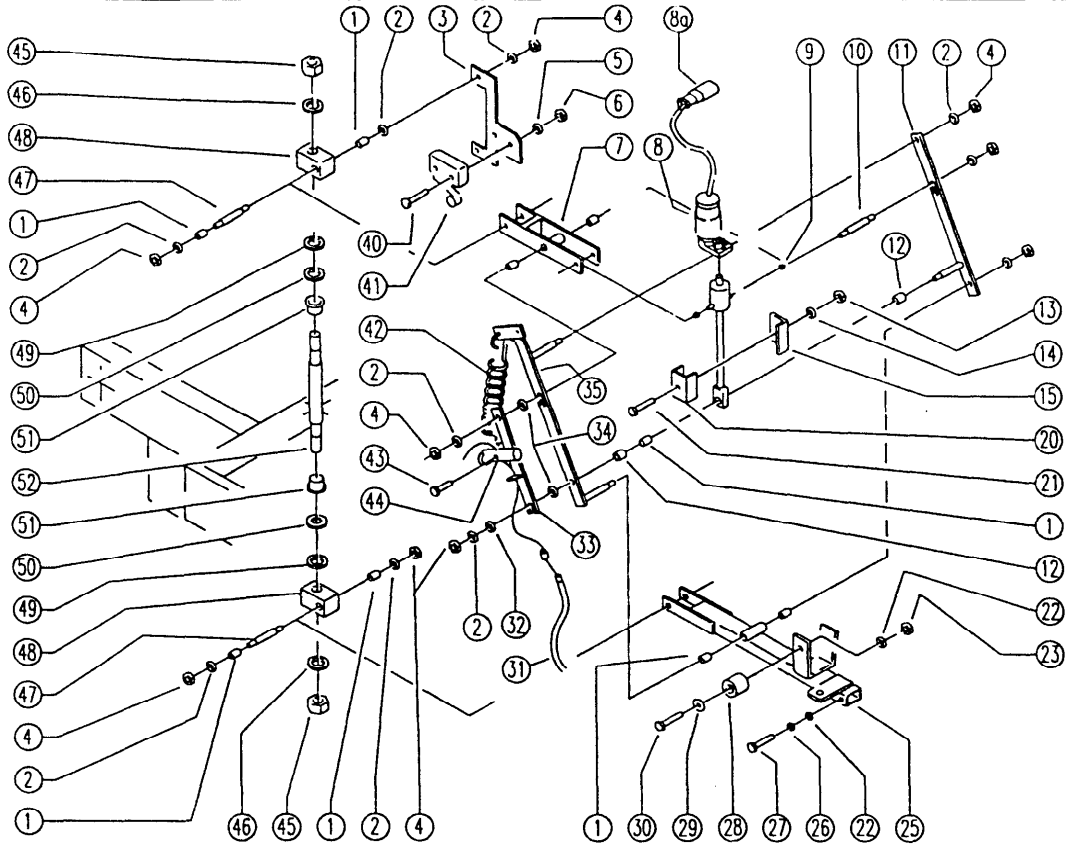
REF. CODE	DESCRIPTION	QT			
1	SL06003	WASHER	14		
2	SL07451	SPACER	1		
3	SL10057	CHAIN TIGHTENER	1		
4	SL04184	SCREW	1		
5	SL02112	GEARMOTOR	1		
6	SL04192	SCREW	2		
7	SL06002	WASHER	12		
8	SL23468	ELECT. HOUSING	1		
9	SL06019	WASHER	2		
10	SL04079	SCREW	2		
11	SL06066	WASHER	1		
12	SL11010	TONGUE	1		
13	SL10054	PINION	1		
14	SL09706	PLATE	1		
15	SL06004	WASHER	4		
16	SL06001	WASHER	1		
17	SL04190	SCREW	3		
18	SL06017	WASHER	5		
19	SL04023	SCREW	10		
20	SL05004	NUT	1		
21	SL04156	SCREW	1		
22	SL16023	CHAIN	1		
23	SL16027	GRID	2		
24	SL05052	NUT	2		
25	SL06027	WASHER	4		
26	SL07265	SPACER	1		
27	SL08031	WHEEL	1		
28	SL07263	PIN	1		
29	SL07266	SPACER	1		
30	SL12038	BEARING	1		
31	SL07267	SPACER	1		
32	SL10055	CROWN	1		
35	SL09687	FORK	1		
37	SL05079	NUT	1		
38	SL16026	CHAIN	1		
39	SL10034	CROWN	1		
40	SL07096	SPACER	1		
41	SL12014	BEARING	1		
42	SL03451	GUARD	1		
43	SL12015	BEARING	1		
44	SL12021	RING	1		
45	SL07450	SCREW	1		
46	SL05001	NUT	1		
47	SL11121	SPLIT PIN	1		
48	SL11048	SPLIT PIN	1		
	SL07258	MOTOR DRUM	1		

CODE:

pl1047 ab SN from 97F757

DESCRIPTION:

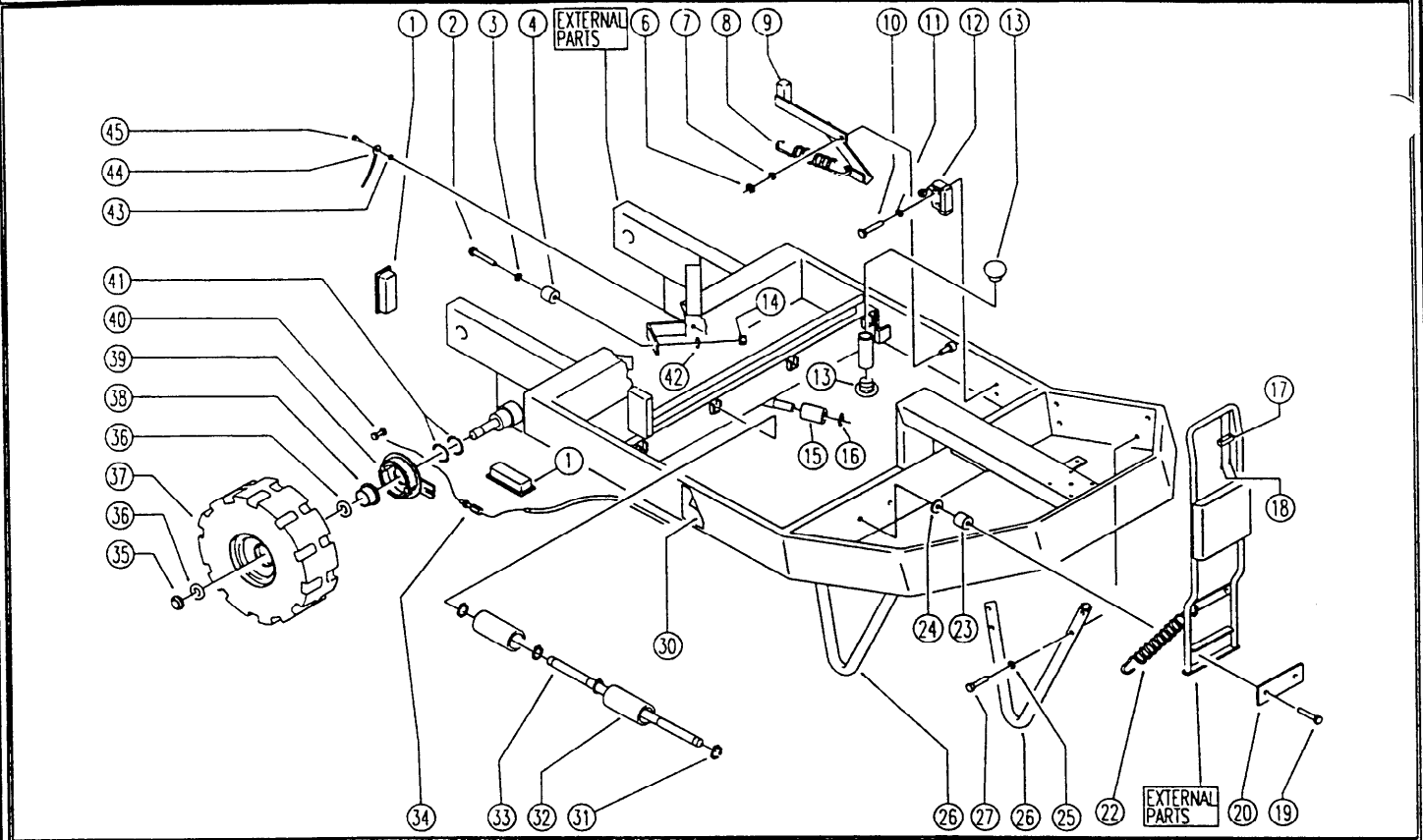
REAR HEAD LIFT



REF.	CODE	DESCRIPTION	QT
1	SL12036	BEARING	9
2	SL06003	WASHER	10
3	SL09852	SUPPORT	1
4	SL05039	NUT	10
5	SL06019	WASHER	2
6	SL05034	NUT	2
7	SL09520	LEVER	1
8	SL02111-1	ACTUATOR	1
8a	SL23971	WIRING UNIT	1
9	SL12040	BEARING	2
10	SL07312	PIN	1
11	SL09736	LEVER	1
12	SL07297	SPACER	2
13	SL05007	NUT	1
14	SL06016	WASHER	1
15	SL09734	SUPPORT	1
20	SL09743	SPACER	1
21	SL04013	SCREW	1
22	SL06004	WASHER	3
23	SL05058	NUT	1
25	SL09519	LEVER	1
26	SL06001	WASHER	2
27	SL04048	SCREW	2
28	SL03103	CAP	1
29	SL06039	WASHER	1
30	SL04073	SCREW	1
31	SL14225	CABLE	1
32	SL06064	WASHER	1
33	SL09749	PLATE	1
34	SL06062	WASHER	2
35	SL09735	PLATE	1
40	SL04107	SCREW	2
41	SL23200	MICROSWITCH	1
42	SL13078	SPRING	2
43	SL04180	SCREW	1
44	SL07314	PIN	1
45	SL05037	NUT	2
46	SL06029	WASHER	2
47	SL07272	PIN	2
48	SL07274	BLOCK / LOCK	2
49	SL06027	WASHER	2
50	SL06074	WASHER	2
51	SL12037	BUSHING	2
52	SL07273	PIN	1

DESCRIPTION:

FRAME



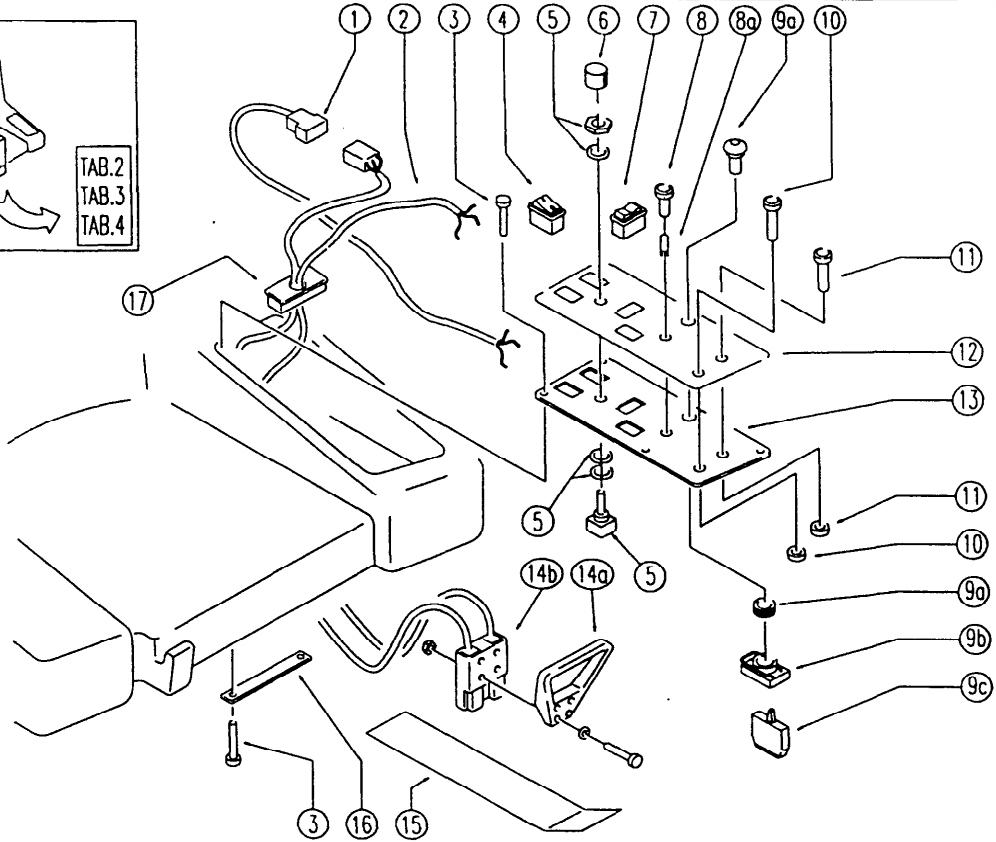
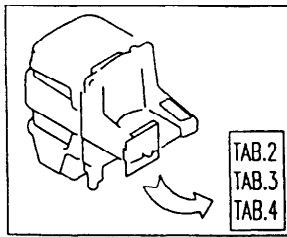
REF.	CODE	DESCRIPTION	QT
1	SL14198	TERMINAL	4
2	SL04073	SCREW	2
3	SL06039	WASHER	2
4	SL03103	PLUG / STOPPER	2
6	SL05001	NUT	1
7	SL06003	WASHER	1
8	SL13011	SPRING	1
9	SL09698	LEVER	1
10	SL04107	SCREW	2
11	SL06019	WASHER	2
12	SL23200	MICROSWITCH	1
13	SL14217	PLUG	6
14	SL05011	NUT	2
15	SL07325	ROLLER	1
16	SL11021	SEEGER	1
17	SL07336	CONNECTION	1
18	SL04231	SCREW	2
19	SL04198	SCREW	2
20	SL09529	PLATE	1
22	SL13013	SPRING	2
23	SL07067	SPACER	2
24	SL06071	WASHER	2
25	SL06002	WASHER	8
26	SL09769	HOSE	2
27	SL04264	SCREW	8
28	SL06025	WASHER	1
29	SL04143	SCREW	1
30	SL25602	LABEL	1
31	SL11100	SEEGER	16
32	SL07351	ROLLER	8
33	SL07300	PIN	4
34	SL14222	REGISTER	2
35	SL05052	NUT	2
36	SL06027	WASHER	4
37	SL08030	WHEEL	2
38	SL07275	BUSHING	2
39	SL14192	BLOCK	2
40	SL14031	CLAMP	2
41	SL06075	WASHER	4
42	SL06004	WASHER	2
43	SL06083	WASHER	1
44	SL23593	CABLE	1
45	SL04010	SCREW	1

CODE:

pl1060BC aa SN from 98L000

DESCRIPTION:

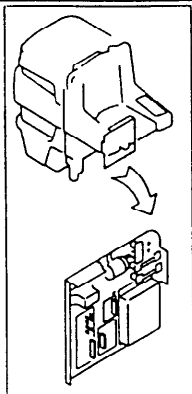
ELECTRIC UNIT 1



REF.	CODE	DESCRIPTION	QT
1	GR23478BC	CONTROL PANEL UNIT	1
2	GR23479	WIRING UNIT	1
3	SL04223	SCREW	10
4	SL23183	SWITCH	2
5	SL23872	POTENTIOMETER	1
6	SL23821	KNOB	1
7	SL23474	PUSH-BUTTON	2
8	SL23031-1	(RETRO)REFLECTOR / REFLEX R	1
8a	SL23413	LAMP	1
9a	SL23669	PUSH-BUTTON	1
9b	SL23955	PUSH-BUTTON	1
9c	SL23956	PUSH-BUTTON	2
	SL23461	PUSH-BUTTON	1
	SL23461-1	PUSH-BUTTON	1
10	SL23461-3	PILOT LIGHT	1
	SL23462-2	(RETRO)REFLECTOR / REFLEX R	1
	SL23462	PUSH-BUTTON	1
	SL23461-2	(RETRO)REFLECTOR / REFLEX R	1
11	SL23461-3	PILOT LIGHT	1
	SL23461-4	LAMP	1
	SL23462-1	PUSH-BUTTON	1
12	SL25902	ADESIVE LABEL	1
13	SL09750	PLATE	1
14a	SL09294	HANDLE	1
14b	SL23459	CONNECTOR	1
15	SL09917	PLATE	1
16	SL09526	SUPPORT	3
17	SL14230	TERMINAL	1

DESCRIPTION:

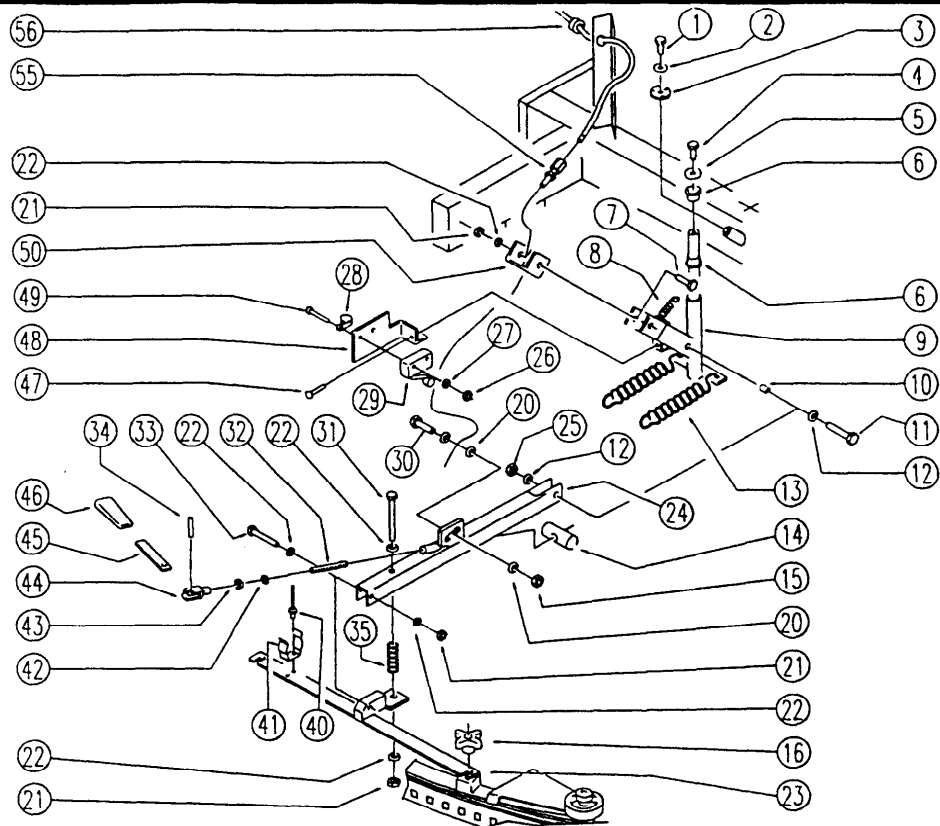
ELECTRIC UNIT 4



REF.18
TAB.2

REF.	CODE	DESCRIPTION	QT
1	SLD4016	SCREW	12
2	SLO4106	SCREW	8
3	SL14184	SPACER	12
4	SL23361	GEARCASE / BOARD	1
5	SL06009	WASHER	12
6	SL05009	SCREW	12
7	SL23571	GEARCASE / BOARD	1
8	SL23924	GEARCASE / BOARD	1
9	SL05034	NUT	8
10	GR23479	WIRING UNIT	2
11	SL23476	GEARCASE / BOARD	1
12a	SL23894	FUSE CARRIER	2
12b	SL23893-2	LID	2
13	SL23144	FUSE	1
14	SL23144	FUSE	1
15	SL23144	FUSE	1
16	SL23144	FUSE	1
17	SL23147	FUSE	1
18	SL23145	FUSE	1
19	SL23144	FUSE	1

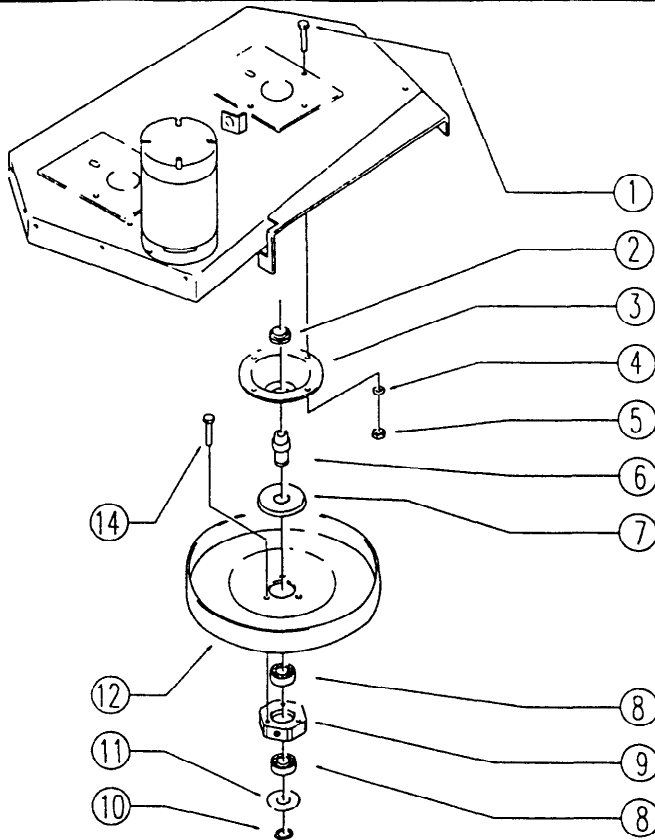
DESCRIPTION: SQUEEGEE LIFT



REF.	CODE	DESCRIPTION	QT				
1	SL04180	SCREW	1				
2	SL06039	WASHER	1				
3	SL06092	WASHER	1				
4	SL04010	SCREW	1				
5	SL06069	WASHER	1				
6	SL12035	BEARING	2				
7	SL04024	SCREW	2				
8	SL13016	SPRING	1				
9	SL09789	BRACKET	1				
10	SL12036	BEARING	2				
11	SL04312	SCREW	1				
12	SL06011	WASHER	2				
13	SL13065	SPRING	2				
14	SL09537	HOOKING	1				
15	SL05013	NUT	1				
16	SL20004	HANDLE	2				
20	SL06005	WASHER	2				
21	SL05039	NUT	4				
22	SL06003	WASHER	6				
23	SL09753	BRACKET	1				
24	SL09657	LEVER	1				
25	SL05032	NUT	1				
26	SL05034	NUT	2				
27	SL06019	WASHER	2				
28	SL14150	CLAMP	1				
29	SL23200	MICROSWITCH	1				
30	SL07310	SCREW	1				
31	SL04248	SCREW	1				
32	SL04251	BAR	1				
33	SL04164	SCREW	1				
34	SL11053	PIN	1				
35	SL13083	SPRING	1				
40	SL14006	TEAR RIVET	2				
41	SL09789	CLIP	1				
42	SL06018	WASHER	1				
43	SL05004	NUT	1				
44	SL22001	FORK	1				
45	SL09721	LEVER	1				
46	SL20021	HANDLE	1				
47	SL04079	SCREW	1				
48	SL09742	SUPPORT	1				
49	SL04107	SCREW	2				
50	SL09737	SUPPORT	1				
55	SL14222	REGISTER	1				
56	SL23050	FAIRLEAD	1				

DESCRIPTION:

HEAD



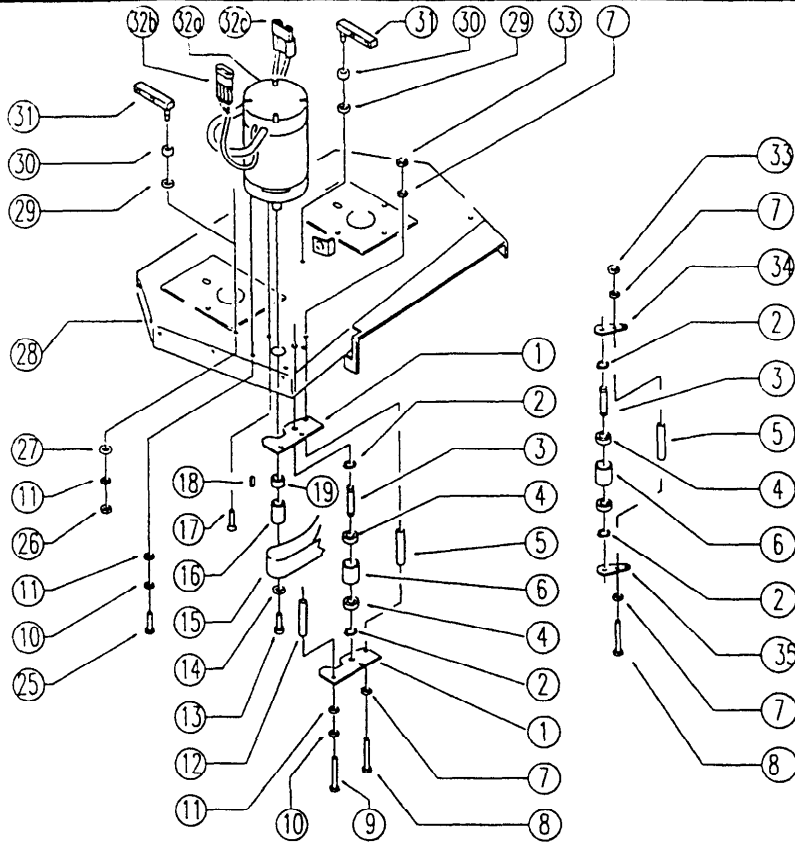
REF.	CODE	DESCRIPTION	QT
1	SL04271	SCREW	8
2	SL05049	NUT	2
3	SL15023	FLANGE	2
4	SL06003	WASHER	8
5	SL05001	NUT	8
6	SL07278	PIN	2
7	SL03259	GUARD	2
8	SL12025	BEARING	4
9	SL14204	HEXAGON	2
10	SL11096	RING	2
11	SL03247	GUARD	2
12	SL10053	PULLEY	2
14	SL04100	SCREW	6

CODE:

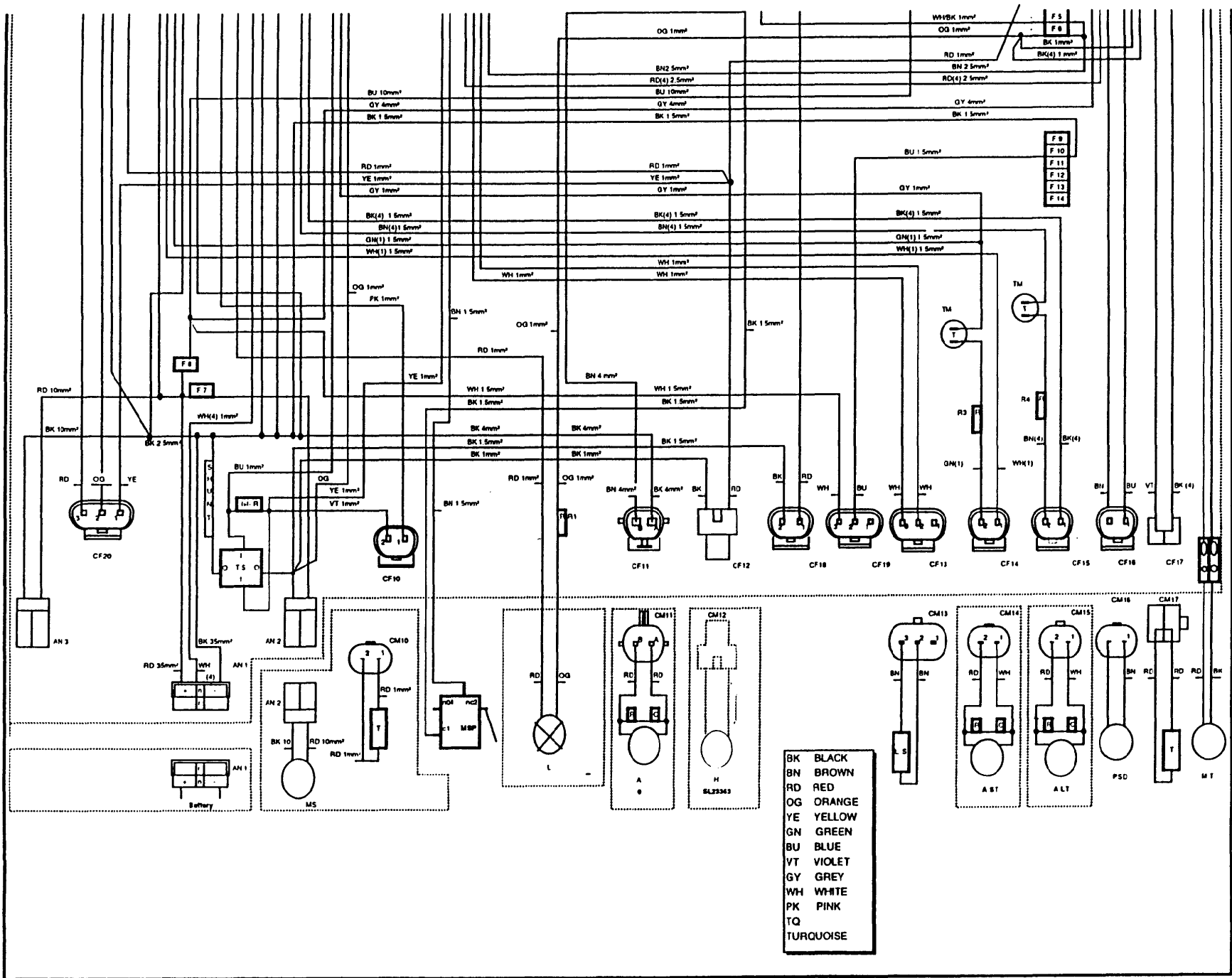
pl1209 aa SN from 97J641

DESCRIPTION:

HEAD



REF.	CODE	DESCRIPTION	QT
1	SL09622	PLATE	2
2	SL11095	RING	4
3	SL11041	PIN	2
4	SL12003	BEARING	4
5	SL07143	SPACER	1
6	SL10045	PULLEY	2
7	SL06004	WASHER	2
8	SL04326	SCREW	3
9	SL04049	SCREW	2
10	SL06002	WASHER	3
11	SL06003	WASHER	5
12	SL07234	SPACER	2
13	SL04096	SCREW	1
14	SL07166	WASHER	1
15	SL16029	BELT	1
16	SL07222	PULLEY	1
17	SL04283	SCREW	1
18	SL11010	TONGUE	1
19	SL10068	SPACER	1
25	SL04083	SCREW	1
26	SL05001	NUT	2
27	SL06064	WASHER	2
28	SL09695	PLATE	1
29	SL06062	WASHER	2
30	SL03209	RUBBER	2
31	SL09629	BRACKET	2
33	SL05011	NUT	1
32a	SL02113	MOTOR	1
32b	SL23527	CONNECTOR	1
32c	SL23010	CONNECTOR	1
32d	SL02113-1	MOTOR COAL	4
34	SL09855	PLATE	1
35	SL09854	PLATE	1



- BK BLACK
- BN BROWN
- RD RED
- OG ORANGE
- YE YELLOW
- GN GREEN
- BU BLUE
- VT VIOLET
- GY GREY
- WH WHITE
- PK PINK
- TQ TURQUOISE

WE RESERVE THE RIGHT TO MODIFY SPECIFICATIONS WITHOUT NOTICE OR OBLIGATION



BETCO
1001 Brown Avenue - Toledo, Ohio 43607 - 1-800-777-9343

SL255118C-1 AS 36R RIDER AUTOMATIC SPARE PARTS