

**Parts and Service Manuals From:**



**On Line Materials for the Jan San Industry.**

**Since 1922**

**Michigan Company Inc.  
2011 N. High St.  
Lansing, Mi 48906  
(517) 484-9312**

**[Http://www.Michco.Com](http://www.Michco.Com)**

**Email:Shop@Michco.com**

**Order parts on line or by Phone**

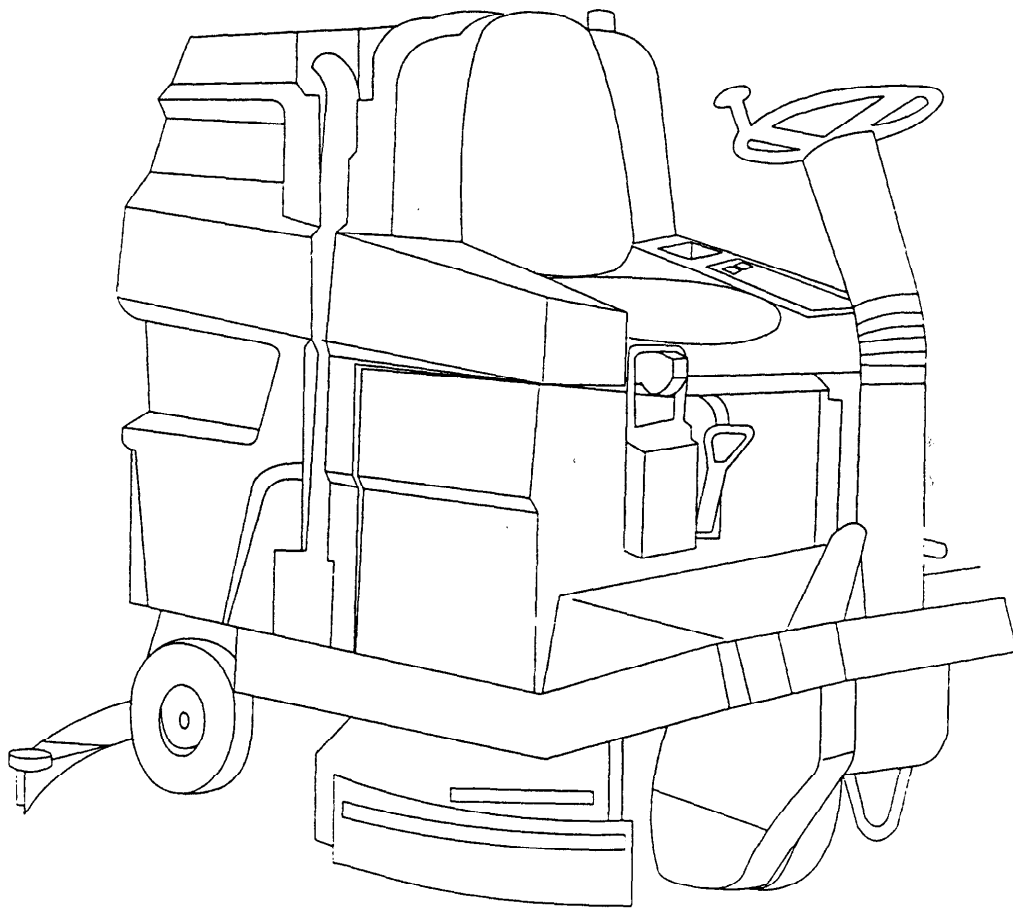
**Visa, MasterCard, Amex**

**Shipping to US addresses only.**

**Materials contained in this manual Copyright respective manufacturer, PDF version made exclusively by Michco for our customer's use only. Any other use of PDF version violates our PDF copyright.**



## SPARE PARTS



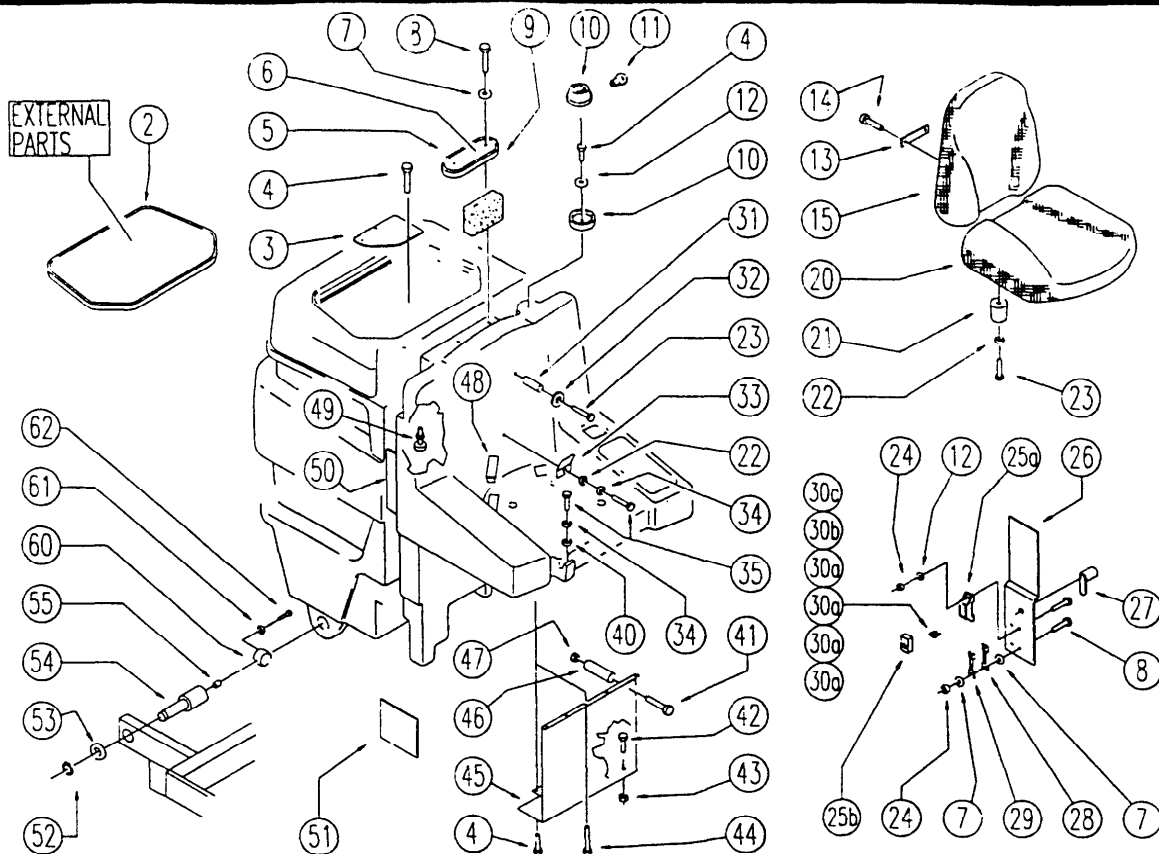
## ***AS 30R RIDER AUTOMATIC***

AUTOMATIC-SWEEPING-SCRUBBER





DESCRIPTION: TANK-ACCESSORIES



REF.	CODE	DESCRIPTION	QT
2	SL03274	GASKET	1
3	SL17363	LID	1
4	SL04173	GASKET	11
5	SL03275	SCREW	1
6	SL17379	LID	1
7	SL06031	WASHER	6
8	SL04065	SCREW	6
9	SL03241	FILTER	1
10	SL23464	FLASH-LIGHT (n.)	1
11	SL23464-2	LAMP	1
12	SL06034	WASHER	3
13	SL09705	PLATE	1
14	SL04259	SCREW	1
15	SL14191-PL	SEAT BACK	1
20	SL14190-PL	SEAT	1
21	SL03103	PLUG / STOPPER	4
22	SL06004	WASHER	4
23	SL04009	SCREW	6
24	SL05012	NUT	4
25a	SL23894-1	FUSE-HOLDERS	1
25b	SL23893-2	LID	1
26	SL09901	LID	1
27	SL20045	CATCH / LOCK	1
28	SL23869	FUSE	1
29	SL23606	FUSE	1
30a	SL23144	FUSE	4
30b	SL23147	FUSE	1
30c	SL23145	FUSE	1
31	SL07293	SPACER	2
32	SL06015	WASHER	2
33	SL09540	PLATE	1
34	SL06001	WASHER	1
35	SL04180	SCREW	2
40	SL06015	WASHER	1
41	SL04196	SCREW	1
42	SL04252	SCREW	1
43	SL05039	NUT	1
44	SL04223	SCREW	5
45	SL09694	PLATE	1
46	SL07337	SPACER	1
47	SL05011	NUT	1
49	SL14199	TERMINAL	2
49	SL23798	FLOAT	1
50	SL17395	REINFORCEMENT	1
51	SL17499	PANEL	1
52	SL11108	RING	2
53	SL06080	WASHER	2
54	SL07301	PIN	2
55	SL07150	BUSHING	2
60	SL07308	SUPPORT	1
61	SL06003	WASHER	1
62	SL04083	SCREW	1

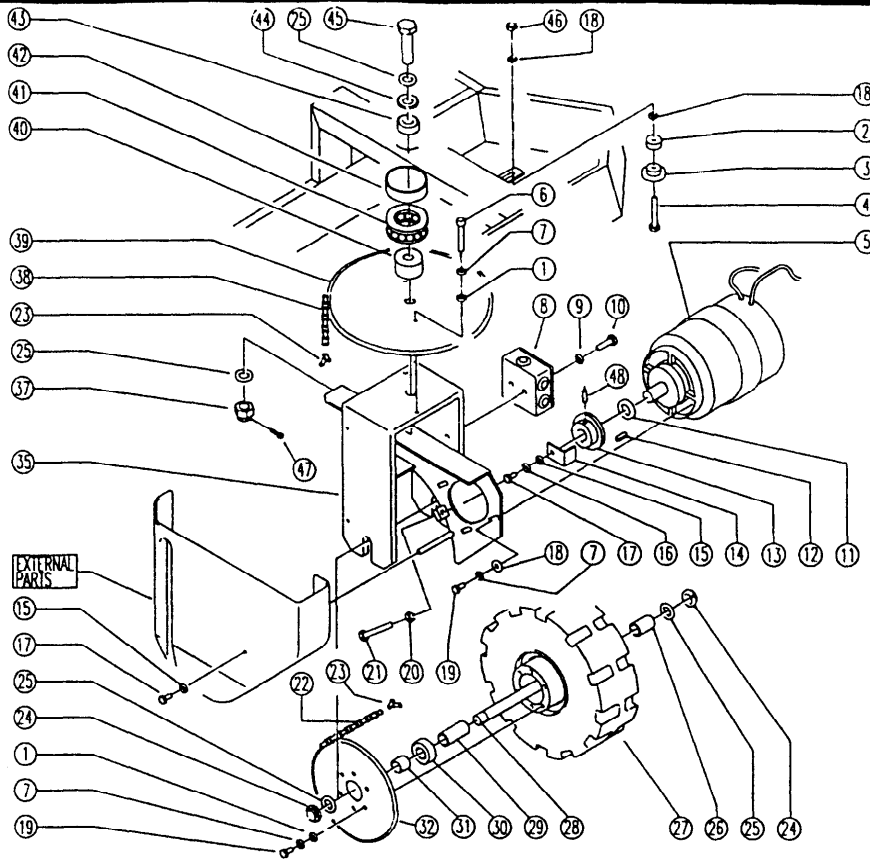


CODE:

pl1045 aa SN from 98D84

DESCRIPTION:

WHEEL



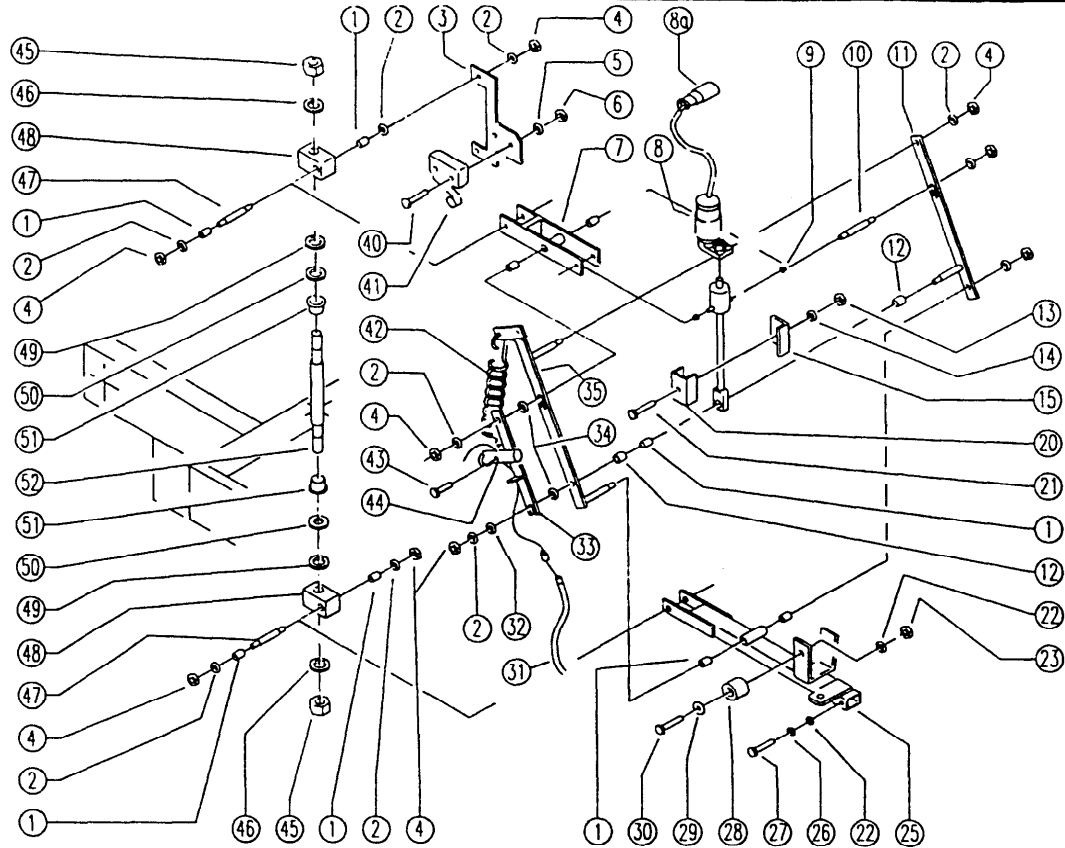
REF.	CODE	DESCRIPTION	QT
1	SL06003	WASHER	14
2	SL07451	SPACER	1
3	SL10057	CHAIN TIGHTENER	1
4	SL04164	SCREW	1
5	SL02112	GEARMOTOR	1
6	SL04192	SCREW	2
7	SL06002	WASHER	12
8	SL23468	ELECT. HOUSING	1
9	SL06019	WASHER	2
10	SL04079	SCREW	2
11	SL06066	WASHER	1
12	SL11010	TONGUE	1
13	SL10054	PINION	1
14	SL09706	PLATE	1
15	SL06004	WASHER	4
16	SL06001	WASHER	1
17	SL04190	SCREW	3
18	SL06017	WASHER	5
19	SL04023	SCREW	10
20	SL05004	NUT	1
21	SL04156	SCREW	1
22	SL16023	CHAIN	1
23	SL16027	GRID	2
24	SL05052	NUT	2
25	SL06027	WASHER	4
26	SL07265	SPACER	1
27	SL08031	WHEEL	1
28	SL07263	PIN	1
29	SL07266	SPACER	1
30	SL12038	BEARING	1
31	SL07267	SPACER	1
32	SL10055	CROWN	1
35	SL09687	FORK	1
37	SL05079	NUT	1
38	SL16026	CHAIN	1
39	SL10034	CROWN	1
40	SL07096	SPACER	1
41	SL12014	BEARING	1
42	SL03461	GUARD	1
43	SL12015	BEARING	1
44	SL12021	RING	1
45	SL07450	SCREW	1
46	SL05001	NUT	1
47	SL11121	SPLIT PIN	1
48	SL11048	SPLIT PIN	1
	SL07258	MOTOR DRUM	1

CODE:

pl1047 ab SN from 97F757

DESCRIPTION:

REAR HEAD LIFT

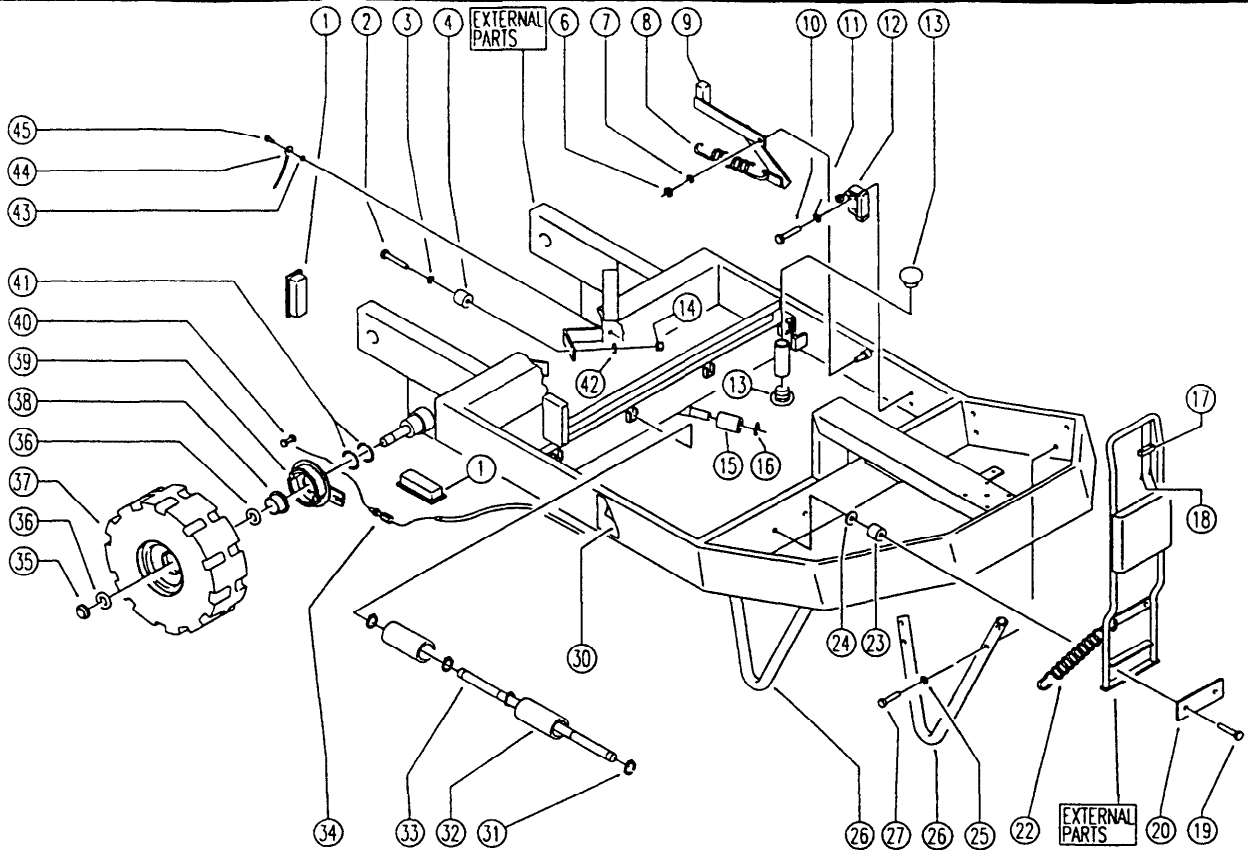


REF.	CODE	DESCRIPTION	QT
1	SL12036	BEARING	9
2	SL06003	WASHER	10
3	SL09852	SUPPORT	1
4	SL05039	NUT	10
5	SL06019	WASHER	2
6	SL05034	NUT	2
7	SL09520	LEVER	1
8	SL02111-1	ACTUATOR	1
8a	SL23971	WIRING UNIT	1
9	SL12040	BEARING	2
10	SL07312	PIN	1
11	SL09736	LEVER	1
12	SL07297	SPACER	2
13	SL05007	NUT	1
14	SL06016	WASHER	1
15	SL09734	SUPPORT	1
20	SL09743	SPACER	1
21	SL04013	SCREW	1
22	SL06004	WASHER	3
23	SL05058	NUT	1
25	SL09519	LEVER	1
26	SL06001	WASHER	2
27	SL04048	SCREW	2
28	SL03103	CAP	1
29	SL06039	WASHER	1
30	SL04073	SCREW	1
31	SL14225	CABLE	1
32	SL06064	WASHER	1
33	SL09749	PLATE	1
34	SL06062	WASHER	2
35	SL09735	PLATE	1
40	SL04107	SCREW	2
41	SL23200	MICROSWITCH	1
42	SL13078	SPRING	2
43	SL04180	SCREW	1
44	SL07314	PIN	1
45	SL05037	NUT	2
46	SL06029	WASHER	2
47	SL07272	PIN	2
48	SL07274	BLOCK / LOCK	2
49	SL06027	WASHER	2
50	SL06074	WASHER	2
51	SL12037	BUSHING	2
52	SL07273	PIN	1



DESCRIPTION:

FRAME



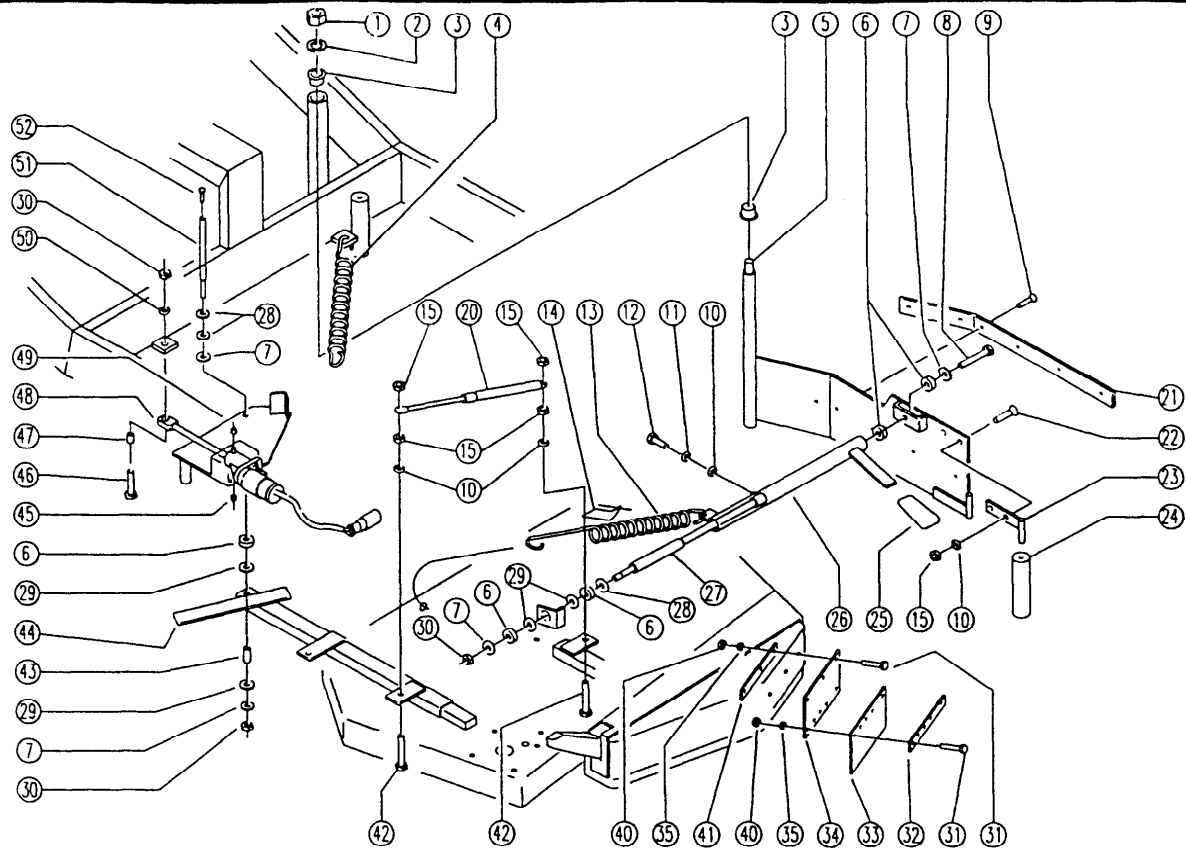
REF.	CODE	DESCRIPTION	QT
1	SL14198	TERMINAL	4
2	SL04073	SCREW	2
3	SL06039	WASHER	2
4	SL03103	PLUG / STOPPER	2
6	SL05001	NUT	1
7	SL06003	WASHER	1
8	SL13011	SPRING	1
9	SL09698	LEVER	1
10	SL04107	SCREW	2
11	SL06019	WASHER	2
12	SL23200	MICROSWITCH	1
13	SL14217	PLUG	6
14	SL05011	NUT	2
15	SL07325	ROLLER	1
16	SL11021	SEEGER	1
17	SL07336	CONNECTION	1
18	SL04231	SCREW	2
19	SL04198	SCREW	2
20	SL09529	PLATE	1
22	SL13013	SPRING	2
23	SL07067	SPACER	2
24	SL06071	WASHER	2
25	SL06002	WASHER	8
26	SL09759	HOSE	2
27	SL04264	SCREW	8
28	SL06025	WASHER	1
29	SL04143	SCREW	1
30	SL25602	LABEL	1
31	SL11100	SEEGER	16
32	SL07351	ROLLER	8
33	SL07300	PIN	4
34	SL14222	REGISTER	2
35	SL05052	NUT	2
36	SL06027	WASHER	4
37	SL08030	WHEEL	2
38	SL07275	BUSHING	2
39	SL14192	BLOCK	2
40	SL14031	CLAMP	2
41	SL06075	WASHER	4
42	SL06004	WASHER	2
43	SL06083	WASHER	1
44	SL23593	CABLE	1
45	SL04010	SCREW	1





DESCRIPTION:

HEAD EXIT



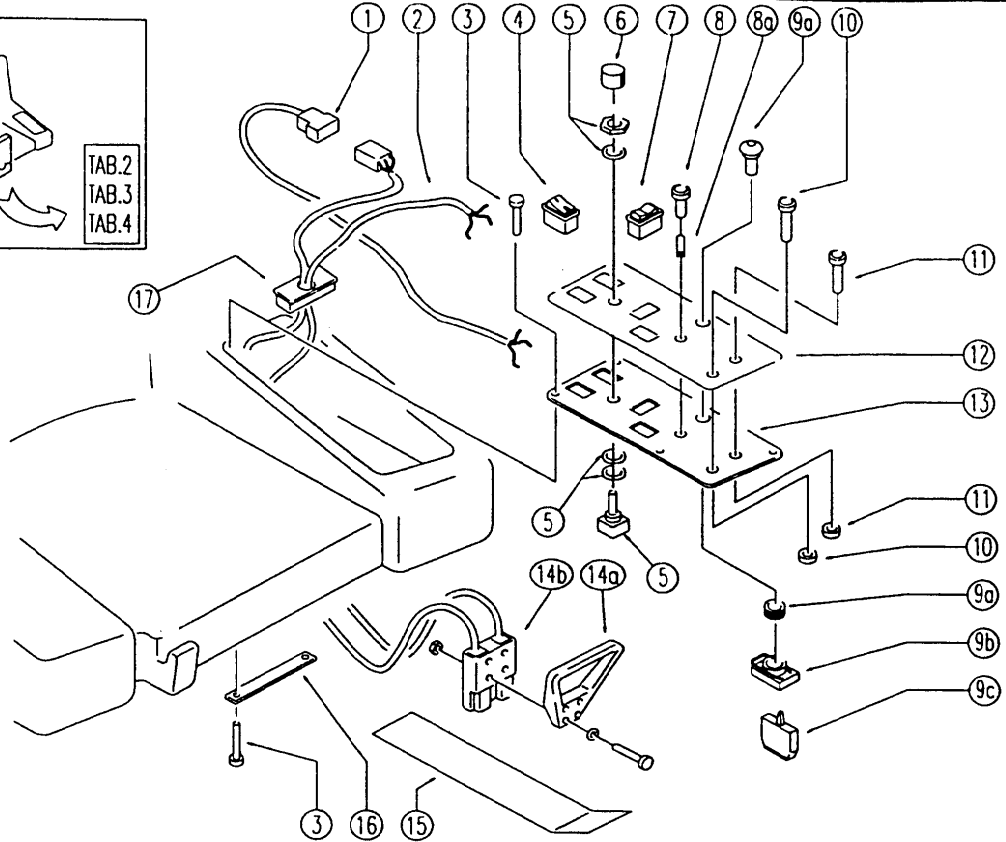
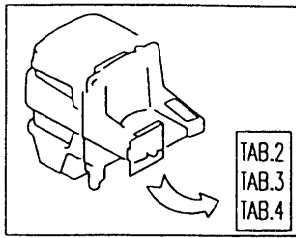
REF.	CODE	DESCRIPTION	QT
1	SL05037	NUT	1
2	SL06029	WASHER	1
3	SL12037	BEARING	2
4	SL13028	SPRING	1
5	SL09692	BUMPER	1
6	SL03209	RUBBER	5
7	SL06017	WASHER	4
8	SL04155	SCREW	1
9	SL04231	SCREW	6
10	SL06004	WASHER	7
11	SL06001	WASHER	1
12	SL04010	SCREW	1
13	SL13082	SPRING	1
14	SL25604	LABEL	1
15	SL05011	NUT	8
20	SL13068	SPRING	1
21	SL17378	STRIP / BAND	1
22	SL04259	SCREW	4
23	SL09707	PLATE	2
24	SL07295	ROLLER	1
25	SL20021	HANDLE	1
26	SL09525	LEVER	1
27	SL09524	LEVER	1
28	SL06011	WASHER	3
29	SL06062	WASHER	4
30	SL05001	NUT	3
31	SL04189	SCREW	8
32	SL17394	STRIP / BAND	1
33	SL03265	FLAP	1
34	SL09709	SUPPORT	1
35	SL06031	WASHER	8
40	SL05034	NUT	8
41	SL09710	PLATE	1
42	SL04073	SCREW	2
43	SL07232	SPACER	1
44	SL09517	LEVER	1
45	SL12040	BEARING	2
46	SL04127	SCREW	1
47	SL07082	SPACER	1
48	SL02111-1	ACTUATOR	1
49	SL09518	CRANK	1
50	SL06003	WASHER	1
51	SL07276	PIN	1
52	SL04101	SCREW	1

CODE:

pl1060BC aa SN from 98L000

DESCRIPTION:

ELECTRIC UNIT 1



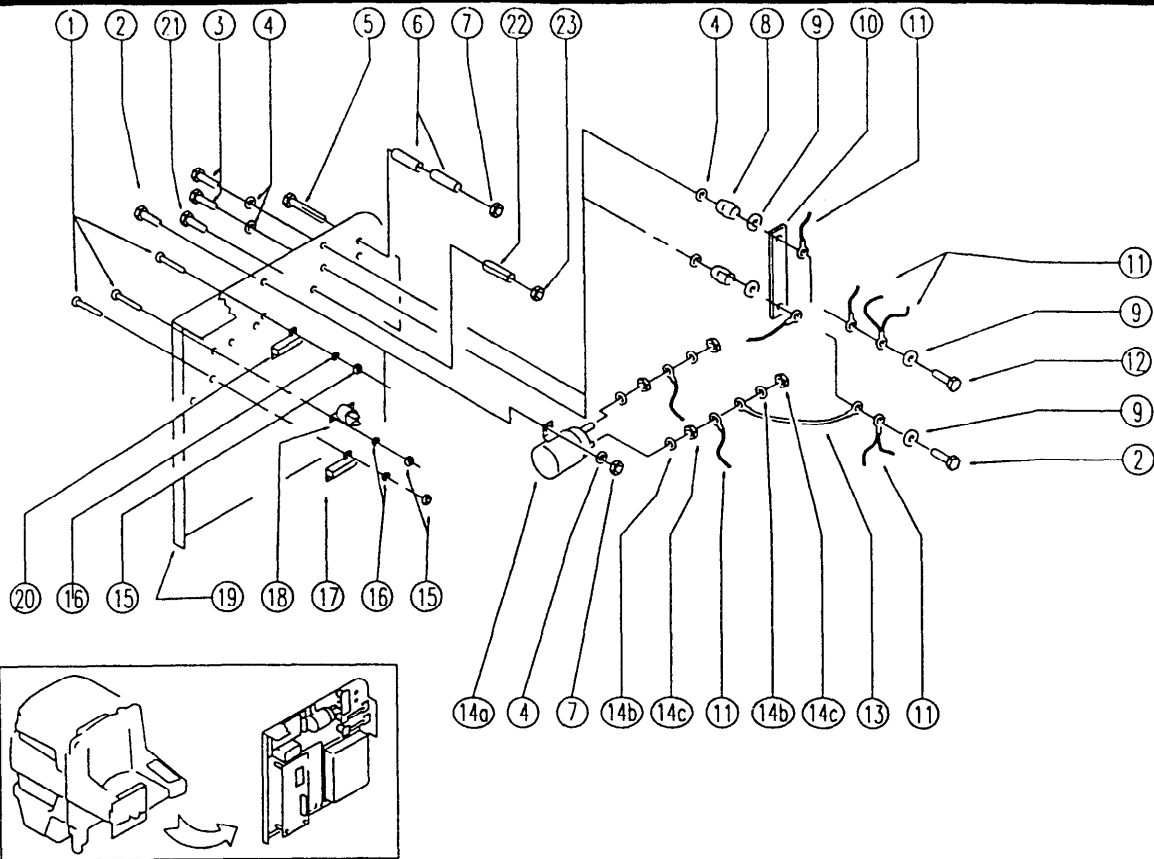
REF.	CODE	DESCRIPTION	QT
1	GR23478BC	CONTROL PANEL UNIT	1
2	GR23479	WIRING UNIT	1
3	SL04223	SCREW	10
4	SL23183	SWITCH	2
5	SL23872	POTENTIOMETER	1
6	SL23821	KNOB	1
7	SL23474	PUSH-BUTTON	2
8	SL23031-1	(RETRO)REFLECTOR / REFLEX RI	1
8a	SL23413	LAMP	1
9a	SL23669	PUSH-BUTTON	1
9b	SL23955	PUSH-BUTTON	1
9c	SL23956	PUSH-BUTTON	2
	SL23461	PUSH-BUTTON	1
	SL23461-1	PUSH-BUTTON	1
10	SL23461-3	PILOT LIGHT	1
	SL23462-2	(RETRO)REFLECTOR / REFLEX RI	1
	SL23462	PUSH-BUTTON	1
	SL23461-2	(RETRO)REFLECTOR / REFLEX RI	1
11	SL23461-3	PILOT LIGHT	1
	SL23461-4	LAMP	1
	SL23462-1	PUSH-BUTTON	1
12	SL25902	ADESIVE LABEL	1
13	SL09750	PLATE	1
14a	SL09294	HANDLE	1
14b	SL23459	CONNECTOR	1
15	SL09917	PLATE	1
16	SL09526	SUPPORT	3
17	SL14230	TERMINAL	1

CODE:

pl1061 aa SN from 96D673

DESCRIPTION:

ELECTRIC UNIT 2

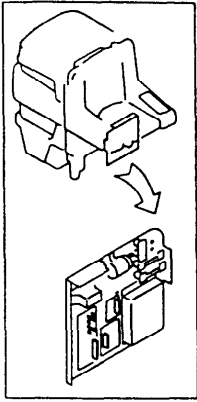


REF.	CODE	DESCRIPTION	QT
1	SL04179	SCREW	12
2	SL04092	SCREW	3
3	SL04010	SCREW	2
4	SL06004	WASHER	6
5	SL04196	SCREW	2
6	SL07176	SPACER	4
7	SL05058	NUT	4
8	SL23103	INSULATOR	2
9	SL06015	WASHER	4
10	SL23569	BRIDGE / JUMPER	1
11	GR23479	WIRING UNIT	1
12	SL04002	SCREW	1
13	SL23125	SHUNT	1
14a	SL23371	TELESWITCH	1
14b	SL06002	WASHER	4
14c	SL05004	NUT	4
15	SL05019	NUT	12
16	SL06009	WASHER	12
17	SL23957	RESISTANCE	1
18	SL23961	THERMOSTAT	2
19	SL09682	PLATE	1
20	SL23969	RESISTANCE	1
21	SL04047	SCREW	1
22	SL07337	SPACER	1
23	SL05039	NUT	1



DESCRIPTION:

ELECTRIC UNIT 4



REF. 18  
TAB. 2

REF.	CODE	DESCRIPTION	QT
1	SL04016	SCREW	12
2	SL04106	SCREW	8
3	SL14184	SPACER	12
4	SL23361	GEARCASE / BOARD	1
5	SL06009	WASHER	12
6	SL05009	SCREW	12
7	SL23571	GEARCASE / BOARD	1
8	SL23924	GEARCASE / BOARD	1
9	SL05034	NUT	8
10	GR23479	WIRING UNIT	2
11	SL23476	GEARCASE / BOARD	1
12a	SL23894	FUSE CARRIER	2
12b	SL23893-2	LID	2
13	SL23144	FUSE	1
14	SL23144	FUSE	1
15	SL23144	FUSE	1
16	SL23144	FUSE	1
17	SL23147	FUSE	1
18	SL23145	FUSE	1
19	SL23144	FUSE	1

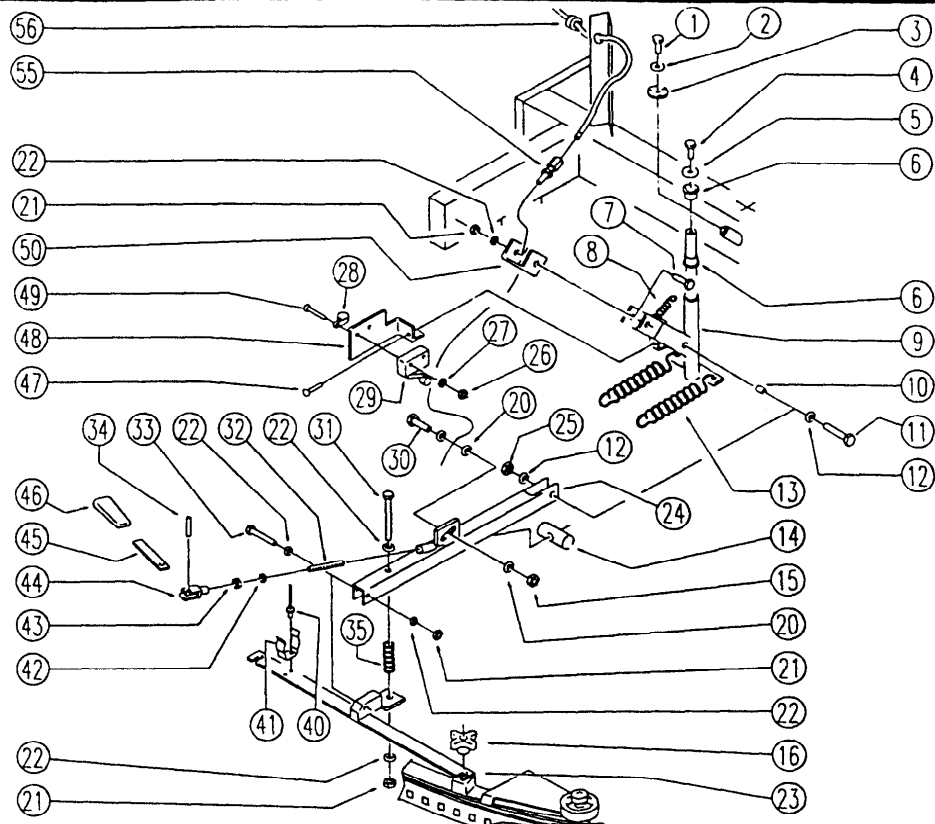


CODE:

pi1069 aa SN from 97146

DESCRIPTION:

SQUEEGEE LIFT



REF.	CODE	DESCRIPTION	QT
1	SL04180	SCREW	1
2	SL06039	WASHER	1
3	SL06092	WASHER	1
4	SL04010	SCREW	1
5	SL06069	WASHER	1
6	SL12035	BEARING	2
7	SL04024	SCREW	2
8	SL13016	SPRING	1
9	SL09789	BRACKET	1
10	SL12036	BEARING	2
11	SL04312	SCREW	1
12	SL06011	WASHER	2
13	SL13065	SPRING	2
14	SL09537	HOOKING	1
15	SL05013	NUT	1
16	SL20004	HANDLE	2
20	SL06005	WASHER	2
21	SL05039	NUT	4
22	SL06003	WASHER	6
23	SL09753	BRACKET	1
24	SL09657	LEVER	1
25	SL05032	NUT	1
26	SL05034	NUT	2
27	SL06019	WASHER	2
28	SL14150	CLAMP	1
29	SL23200	MICROSWITCH	1
30	SL07310	SCREW	1
31	SL04248	SCREW	1
32	SL04251	BAR	1
33	SL04164	SCREW	1
34	SL11053	PIN	1
35	SL13083	SPRING	1
40	SL14006	TEAR RIVET	2
41	SL09789	CLIP	1
42	SL06018	WASHER	1
43	SL05004	NUT	1
44	SL22001	FORK	1
45	SL09721	LEVER	1
46	SL20021	HANDLE	1
47	SL04079	SCREW	1
48	SL09742	SUPPORT	1
49	SL04107	SCREW	2
50	SL09737	SUPPORT	1
55	SL14222	REGISTER	1
56	SL23050	FAIRLEAD	1







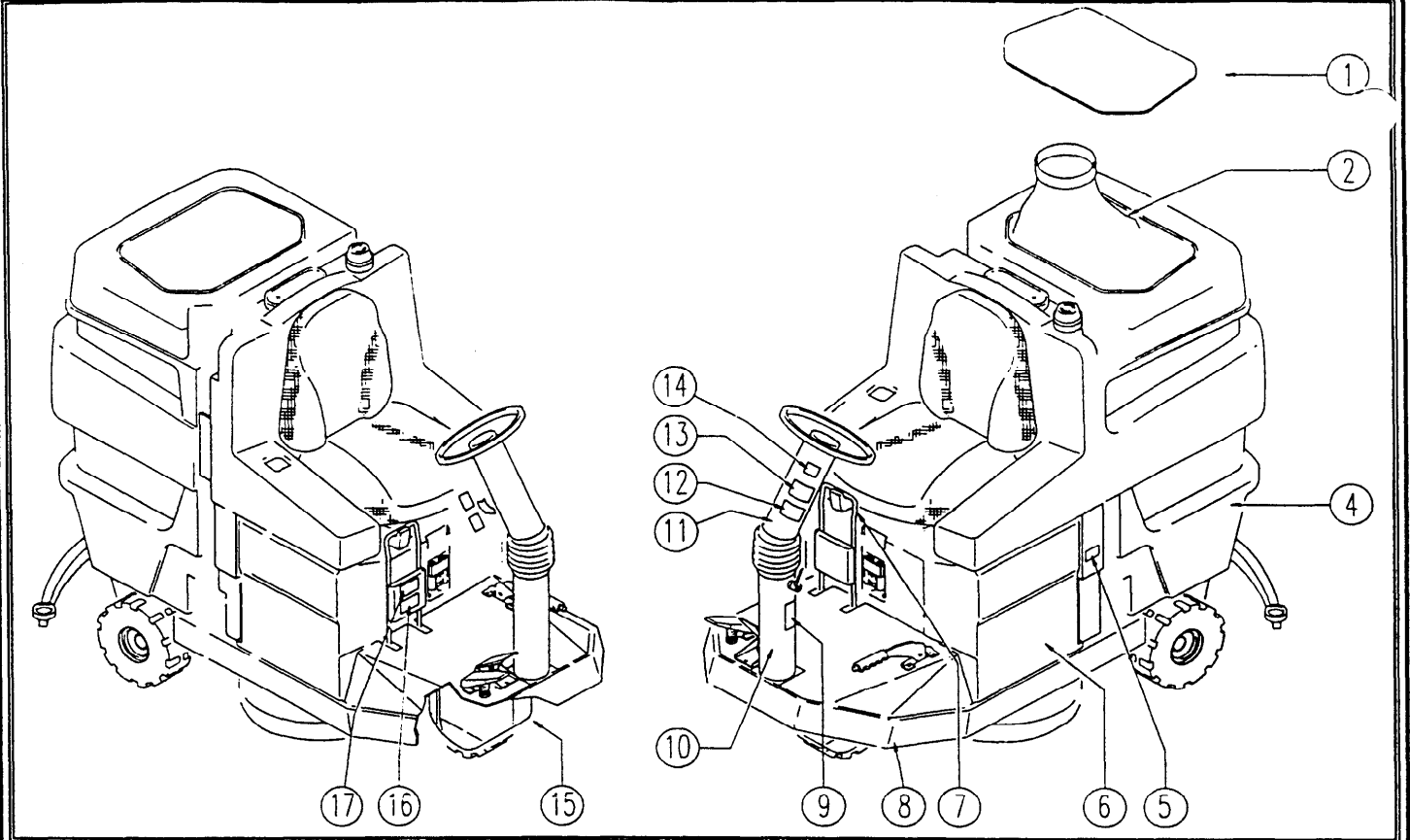




CODE:

pl1276BC aa SN from 98L000

DESCRIPTION: EXTERNAL PARTS



REF. CODE	DESCRIPTION	QT
1	SL17365F LID	1
2	AL04714BC DIAPHRAGM / MEMBRANE	1
4	SL17340BC TANK	1
5	SL25187 LABEL	1
6	SL17342BC TANK / BOX	1
7	SL09523F HANDLE	1
8	SL09678F FRAME	1
9	SL25559 LABEL	1
10	SL09696F STEERING COLUMN	1
11	SL09697F STEERING COLUMN	1
12	SL25177 LABEL	1
13	SL25053 ADESIVE LABEL	1
14	SL25362 ADESIVE LABEL	1
15	SL17337BC CASE	1
16	SL25911 LABEL	1
17	SL25912 LABEL	1

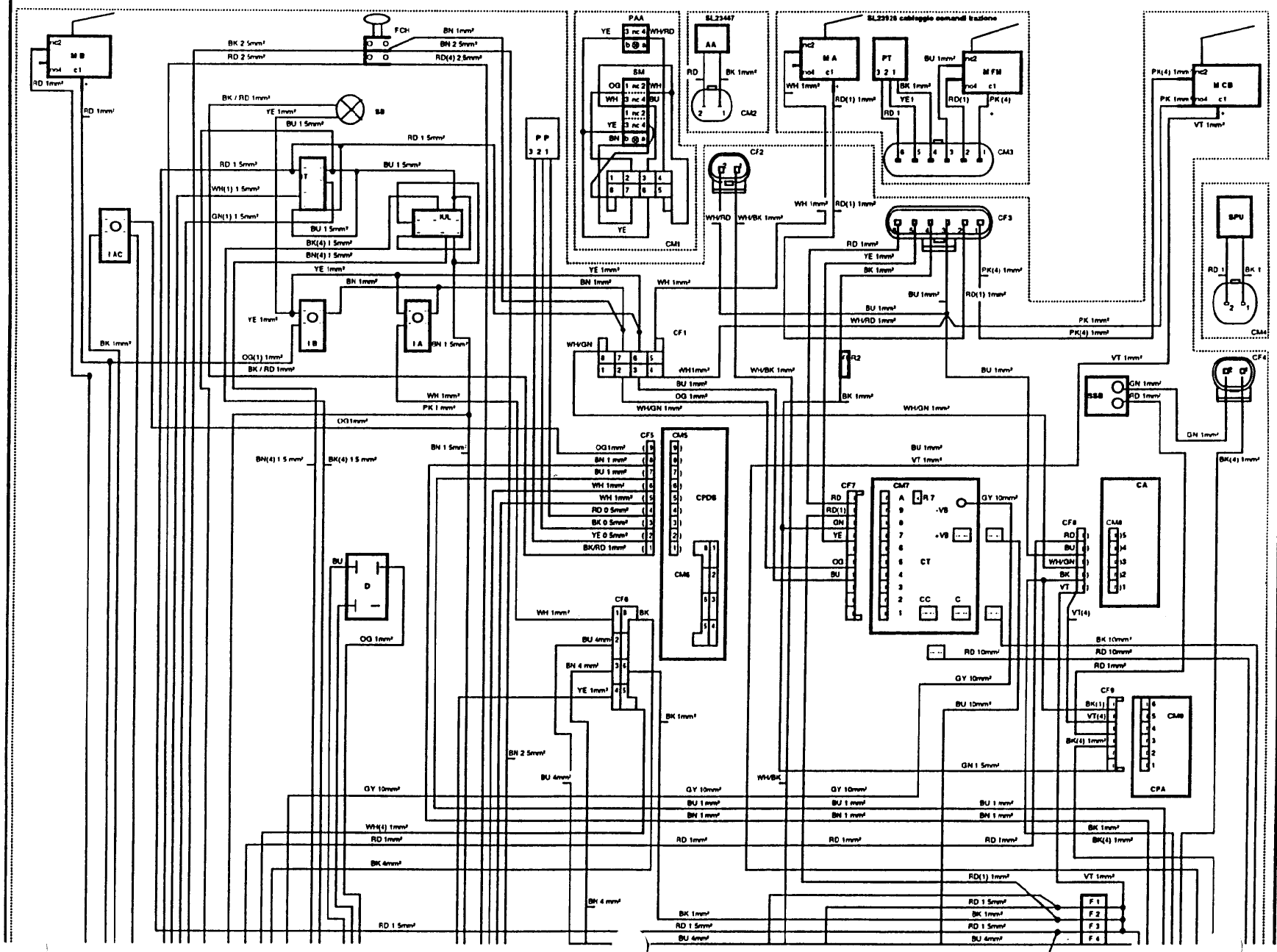


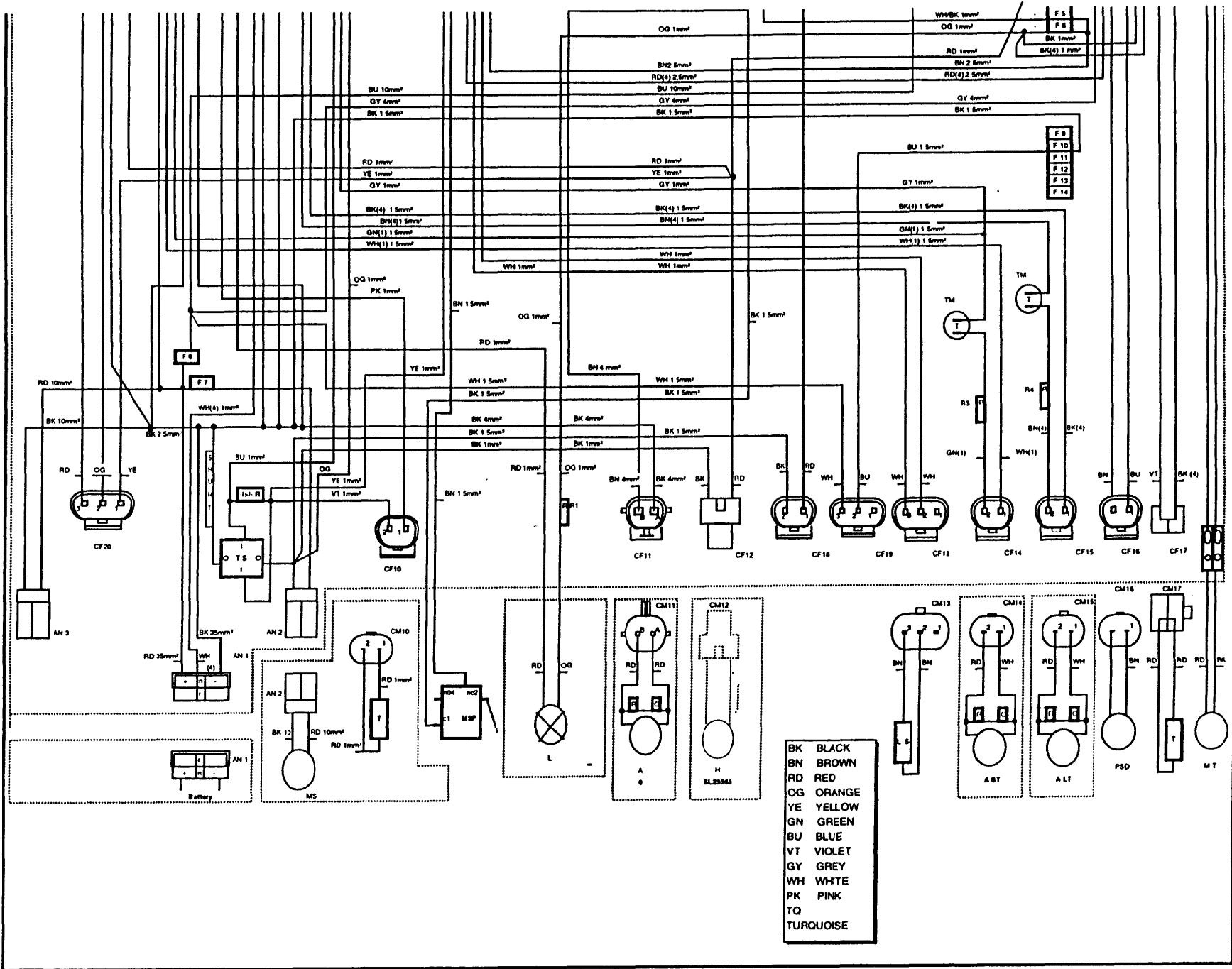
DESCRIPTION:

WIRING DIAGRAM

CODE:

WD27126 aa SN from 98F217





- BK BLACK
- BN BROWN
- RD RED
- OG ORANGE
- YE YELLOW
- GN GREEN
- BU BLUE
- VT VIOLET
- GY GREY
- WH WHITE
- PK PINK
- TO TURQUOISE





WE RESERVE THE RIGHT TO MODIFY SPECIFICATIONS WITHOUT NOTICE OR OBLIGATION



BETCO

1001 Brown Avenue - Toledo, Ohio 43607 - 1-800-777-9343