



Electronic Service Manuals

This electronic document is provided as a service to our customers. We do not create the contents of the information contained in this document. Should you have detailed questions pertaining to the information contained in this document, you may contact Michco, or the manufacturer which provided the original information in this electronic deliverable. Michco's only part in this electronic deliverable was the electronic assembly process. By providing this manual on line we are not guaranteeing parts availability.

You may contact Michco through the following methods:

Phone (517) 484-9312 or (800) 331-3339

2011 N. High St. -- Lansing, Michigan -- 48906

Fax: (517) 484-9836

Email: CustServe@Michco.com

Web site: www.Michco.Com

Parts Web site: www.FloorMachineParts.Com

Order Parts on Line at:

www.FloorMachineParts.Com

Directly to Parts & Service:

By Email: **Shop@Michco.com**

By Fax: (517) 702-2041

By Voice: Use numbers above.

Serving the Cleaning Industry Since 1922

Notice: All copyrighted material remains property of original owners, all trademarks are property of respective owners. Manuals are subject to Manufacturer's reproduction limitations. Originals or reproductions were provided by manufacturers through a request. We make no warranty as to the correctness of information provided in this document and you assume all risk. By placing these manuals on line we are not declaring our corporation to be an manufacturer authorized dealer or provider, please check our web site for authorized manufacturers we represent.

6150

Power Sweeper



ZAOH Special Features PARTS LIST

American-Lincoln Model: 576-508

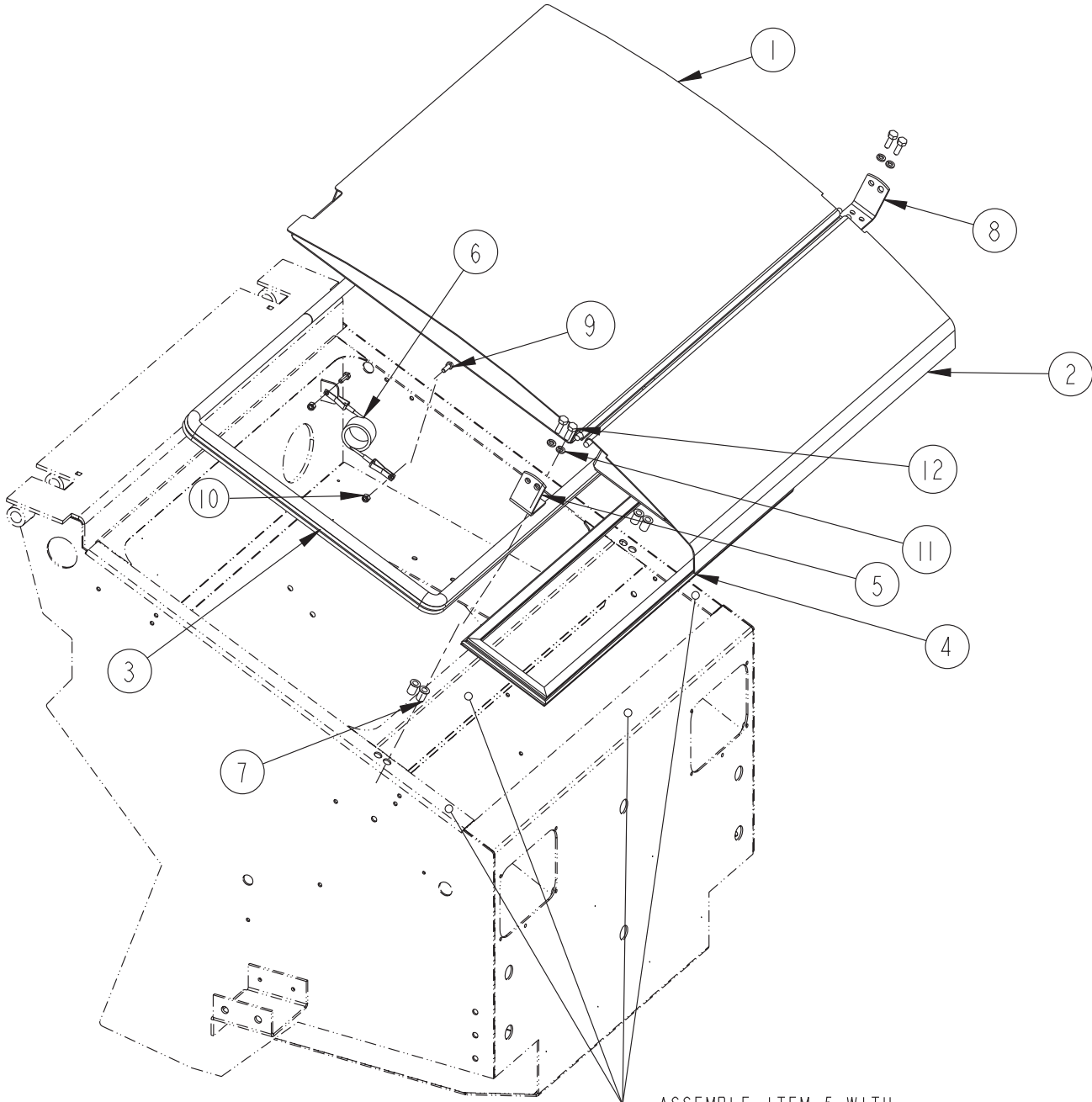
American-Lincoln[®]

DESCRIPTION	Page
Hopper Covers & Gaskets.....	2
Dump Door	4
Steering Column.....	6
Wheel Well Flaps.....	8
Engine Cover.....	10
Kubota 3-Cylinder Diesel Engine	12
Instrument Panel	14
Lift Hooks/Broom Chamber Flaps & Seals.....	16
Control And Relief Valve.....	18
Hydraulic Hose Diagram	20
Vac Fan Assembly	22
Main Broom Driver	24
Hydraulic Oil Cooler	25
Filter Shaker.....	26
Battery Electrical Assembly.....	28
Instrument Panel Connection Drawing.....	29
Electrical Schematic	30
Hydraulic Schematic	31
Zaoh Unique Operations	32

WHEN ORDERING PARTS

- * Use the 6 to 8 digit numbers from the "Ref. No." columns in this parts list.
- * Specify the model and serial number of the machine.
- * Use the space below to record the model and serial number for future reference.

Model _____ Serial No. _____



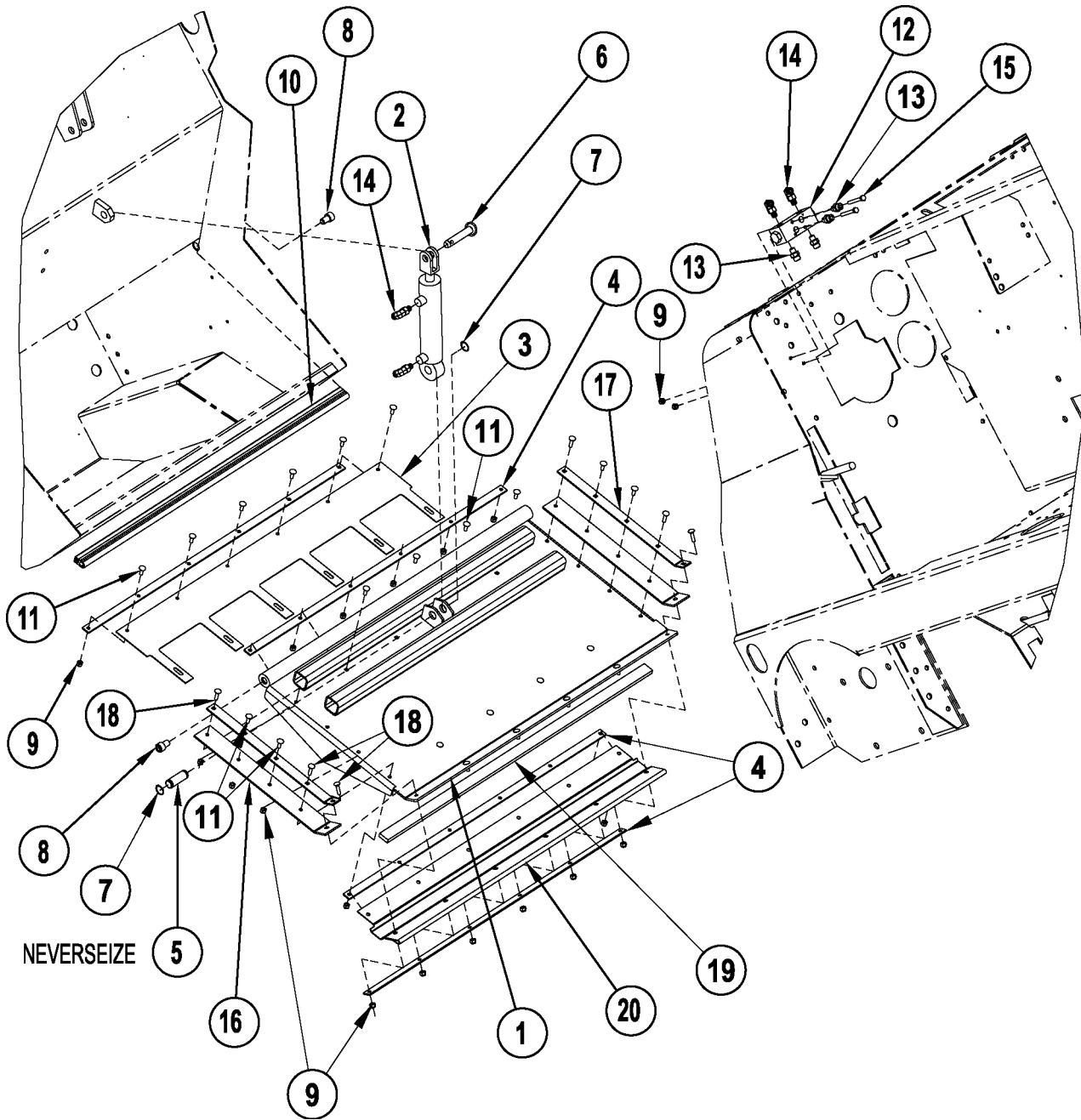
80806-2/2-05

ASSEMBLE ITEM 5 WITH
SCOTCH 4925 ADHESIVE
TAPE (3-73-00042, 6.5 FT)

06-5

HOPPER COVERS & GASKETS**6150 - ZAOH****3**

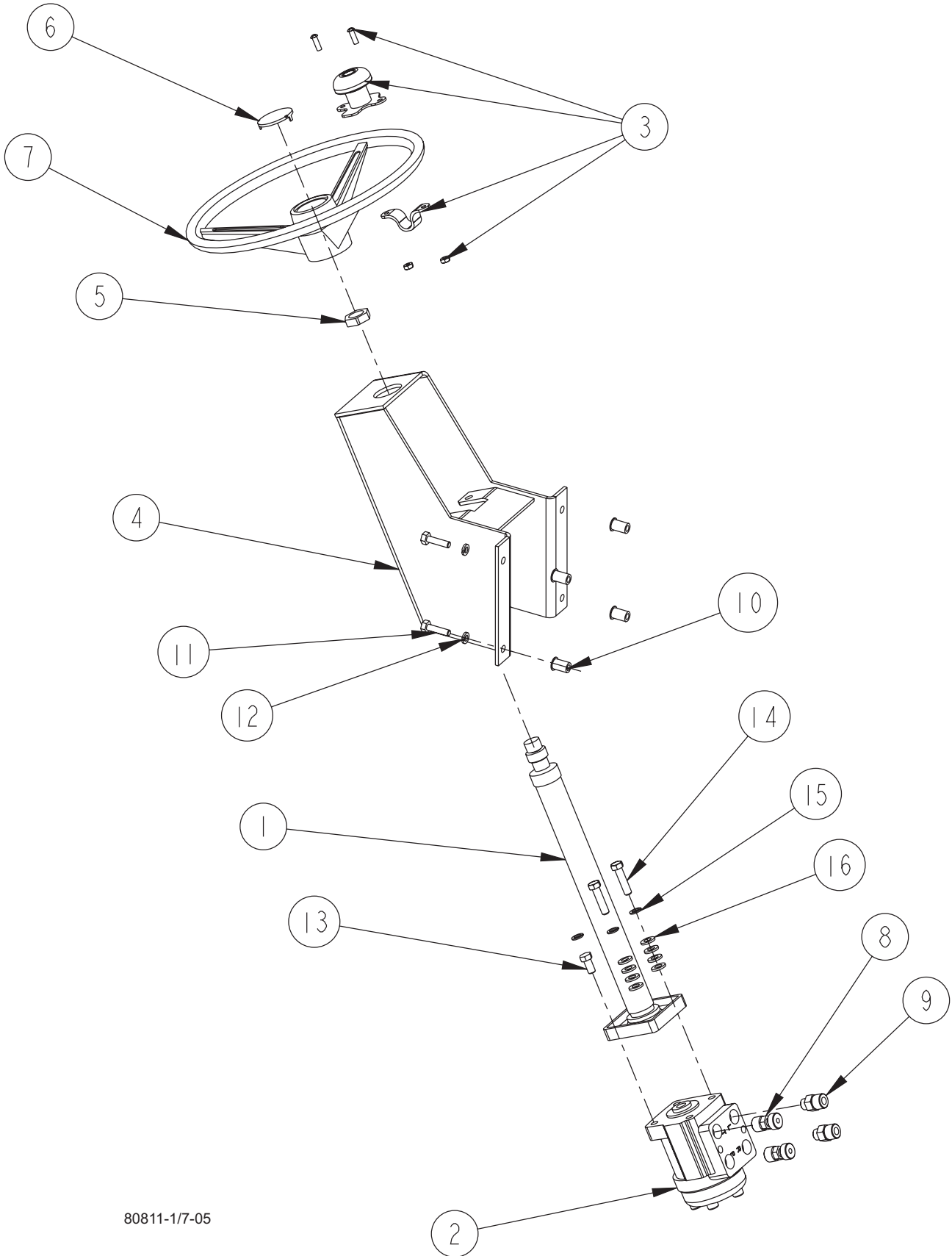
Item	Ref. No.	Qty	Description
1	8-16-07373	1	Cover, Filter (welded)
2	8-16-07374	1	Cover, Debris (welded)
3	8-29-00290	1	Gasket
4	8-29-00254	1	Gasket
5	8-08-00847	1	Bracket, RH Cover Hinge
6	8-10-00027	1	Cable
7	2-00-05330	4	Insert, 5/16-18 Threaded
8	8-08-00875	1	Bracket, LH Cover Hinge
9	2-00-00221	2	Screw, 1/4-20 x .625 HHC
10	2-00-00641	2	Nut 1/4-20 Fiber Insert
11	2-00-00530	4	Lock Washer, 5/16 HS Med.
12	2-00-00206	4	Screw, 5/16-18 x 1.0 HHC



06-5

DUMP DOOR**6150 - ZAOH****5**

Item	Ref. No.	Qty	Description
1	8-19-08066-2	1	Door, Dump
2	7-17-05011	1	Cylinder-Lift
3	8-25-08210	1	Flap, Door Vent
4	8-13-07141	4	Clamp, Door Vent Flap
5	8-55-08123	1	Pin-Cylinder
6	7-55-08121	1	Pin-Lift
7	2-00-00540	2	Ring-Ret. Ext.#5100-75 For 3/4 D.
8	2-00-05277	2	Socket Head Cap Screw, 1/2" X 3/4"
9	2-00-00641	30	Nut, Fiber Insert 1/4-20
10	8-29-00244	1	Gasket, Dump Door
11	2-00-03575	22	Bolt-Carr, .25-20 X .75 GR5 Zn
12	8-88-00064	1	Check Valve Assy
13	2-00-04895	4	Fitting-Straight Connector
14	2-00-04892	4	Fitting-90° Elbow (O-Ring)
15	2-00-02589	2	Bolt-Hex Head, Finished, 1/4-20
16	8-68-05087-2	2	Seal-Dump Door
17	8-13-07140-3	2	Clamp-Dump Seal
18	2-00-02196	6	1/4-20-1 LG Carriage Bolt
19	7-29-00346	1	Gasket
20	7-29-00347	1	Gasket

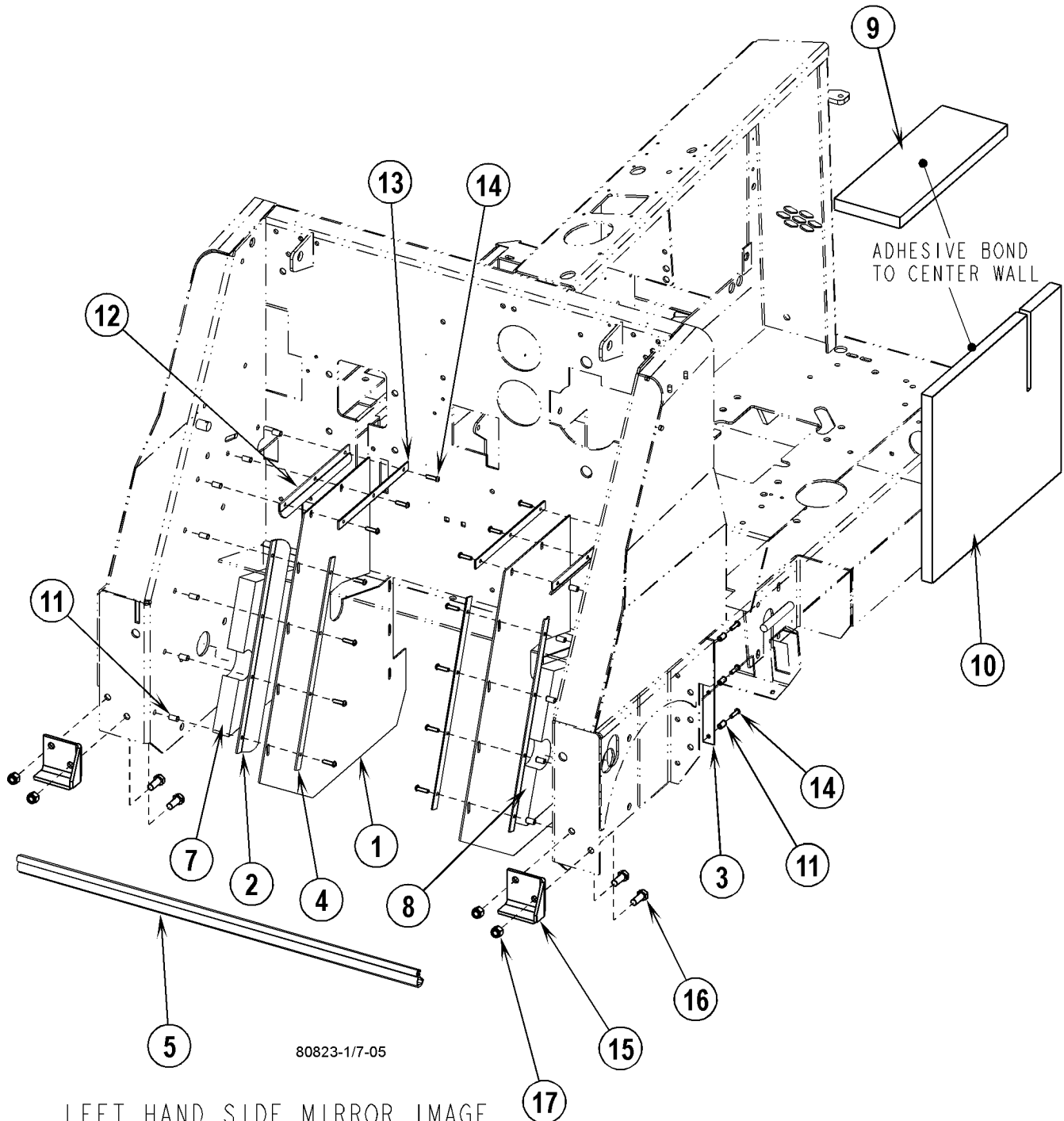


80811-1/7-05

06-5

STEERING COLUMN**6150 - ZAOH****7**

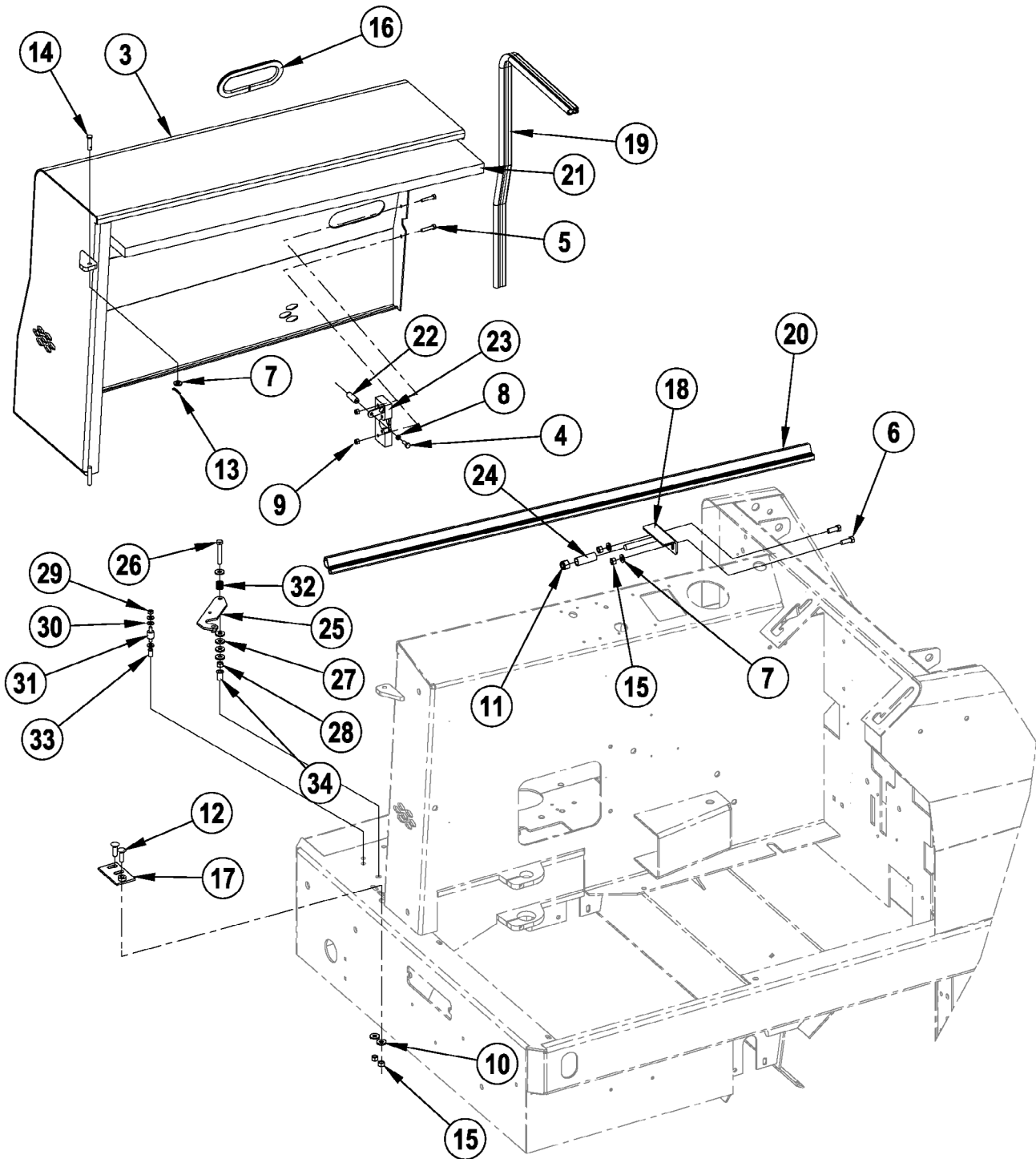
Item	Ref. No.	Qty	Description
1	8-70-05303	1	Steering Column
2	8-60-05026	1	Steering Unit (Gas, LP, Diesel)
3	7-39-00049	1	Knob, Steering Wheel
4	8-33-05127	1	Steering, Housing
5	8-23-03072	1	Nut, Special
6	8-11-00052	1	Cap, Steering Wheel
7	8-89-08074	1	Steering Wheel
8	2-00-04970	2	Connector Fitting, STR 8 ORS - 8 SAE
9	2-00-05264	2	Fitting, #8 SAE x #4 ORS
10	2-00-05330	4	Threaded Insert, 5/16-18
11	2-00-02709	4	Screw, 5/16-18 x 1.50
12	2-00-00530	4	Lock Washer, 5/16 HS Med.
13	2-00-00232	2	Screw, 3/8-16 x .750 HHC
14	2-00-00234	2	Screw, 3/8-16 x 1.50 HHC
15	2-00-02310	4	Lock Washer, Helical Spring 3/8 Med.
16	2-00-00402	8	Flat Washer, .750 x .391 x .093



06-5	WHEEL WELL FLAPS		
07-3	6150 - ZAOH		9

Item	Ref. No.	Qty	Description
1	8-25-08211-1	2	Flap, Wheel Well
2	8-13-07142-1	2	Clamp, Wheel Well Flap (Front)
3	8-13-07148	2	Clamp, Wheel Well Flap (Rear)
4	8-13-07147-1	2	Clamp, Wheel Well Flap (Front)
5	8-68-05090	1	Seal, Broom Chamber/Dump Door
7	8-68-05088	1	Seal, Wheel Well (Right)
8	8-68-05089	1	Seal, Wheel Well (Left)
9*	8-34-09028	1	Insulation, Top
10*	8-34-09034	1	Insulation, Side
11	2-00-05261	20	Threaded Insert, 1/4-20
12	8-13-07175	2	Clamp, Rear Flap
13	8-13-07176	2	Clamp, Front Flap
14	2-00-04877	20	Screw, 1/4-20 x 1.0 BHS
15	7-08-01343	2	Bracket, Jack Point
16	2-00-00240	4	Screw, 1/2-13 x 1.250 HHC
17	2-00-04936	4	Locknut-Elastic, 1/2-13

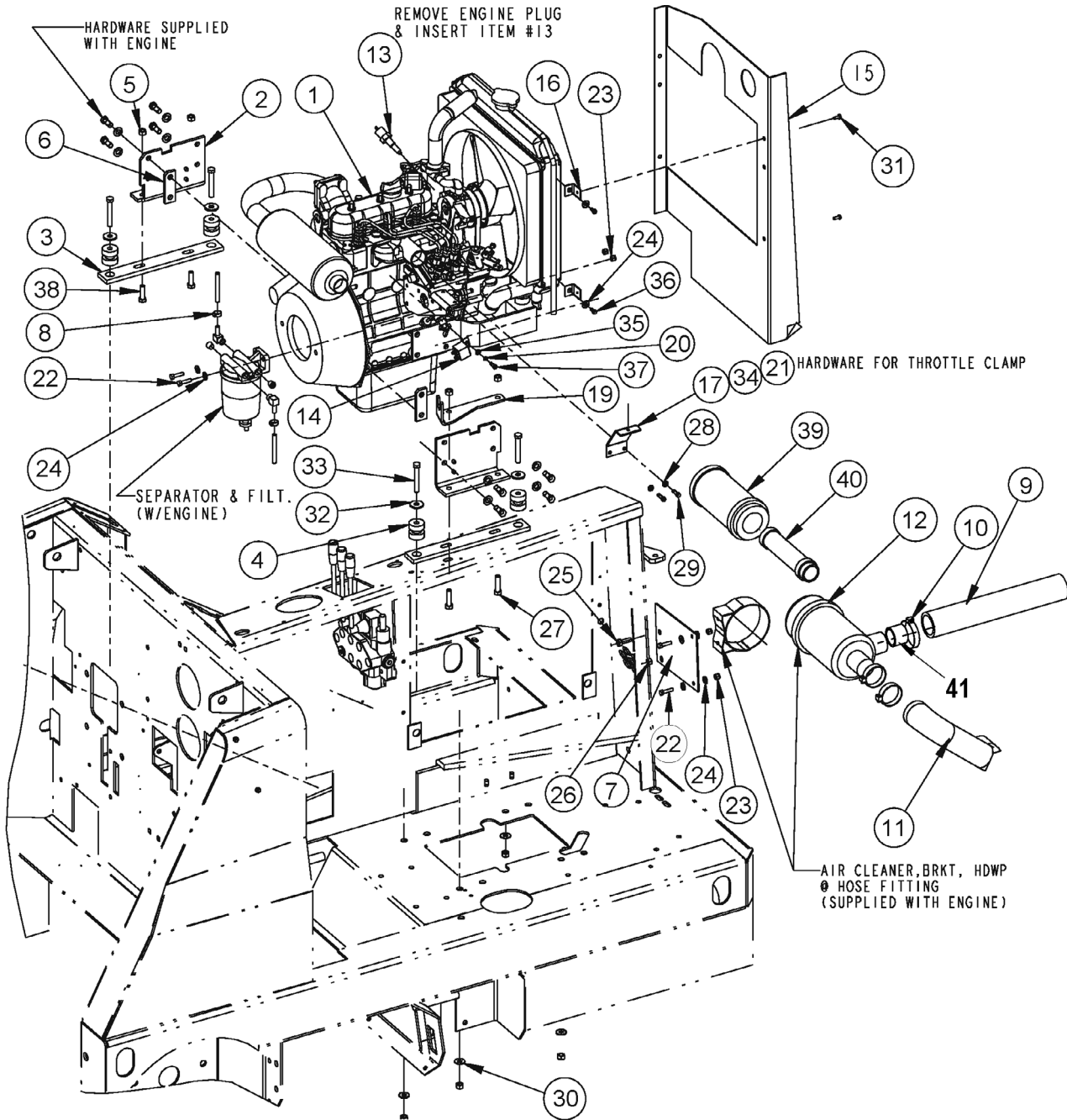
* Gas, LP, Diesel Only



06-5	ENGINE COVER			
09-2	6150 - ZAOH			11

Item	Ref. No.	Qty	Description
1#			DELETED
2#			DELETED
3	8-16-07367	1	Engine Cover Weldment
4	2-00-00221	1	Bolt-Hex Head, Finished, 1/4-20x3/4 Lg
5	2-00-00222	2	1/4-20 X 1.25 Lg Hex Head Screw
6	2-00-00233	2	Bolt-Hex Head, Finished, 3/8-16 X 1.00
7	2-00-00402	3	Washer, 25/64" Id X 3/4" Od
8	2-00-00518	1	Washer,Lock,1/4" Helical Spring
9	2-00-00641	2	Nut, Fiber Insert 1/4-20
10#	2-00-04801	7	Flat Washer, 1.00 X .39 X .06
11	2-00-04936	1	Locknut-Elastic, 1/2-13
12	2-00-05187	2	3/8-16 X 1.0", Carriage Bolt
13	2-00-05249	1	Hair Pin (Cotter)
14	2-00-05266	1	Pin - 3/8 Dia
15	2-95-04182	4	Nut, Hex, Stop, 3/8-16
16	7-21-03003	1	Edging
17	8-08-00844	1	Weldt, Engine Cover Mounting Plate
18	8-08-00961	1	Bracket, Engine Cover Guide
19	8-29-00245	1	Gasket-Engine Cover
20	8-29-00246	1	Gasket-Engine Cover
21	8-34-09030	1	Insulation-Cover
22	8-39-00014	1	Knob, Latch
23	8-41-00051	1	Latch, Rotor
24	8-66-05012	1	Roller, Engine Cover Mtg
25	7-03-04275	1	Safety Arm, Engine Cover
26	2-00-02599	1	Screw, 3/8-16 x 2.25 HHCS
27#			DELETED
28	2-00-02360	1	Nut, .38-16 Hex
29	2-00-00594	1	Nut, 1/4-20 Hex
30	2-00-03702	3	Flat Washer, .625 x .281 x .063
31	8-50-05053	1	Mount, Isoator
32	7-76-00121	1	Spring
33	2-00-05261	1	Insert, 1/4-20
34	2-00-05347	1	Insert, 3/8-16 Threaded

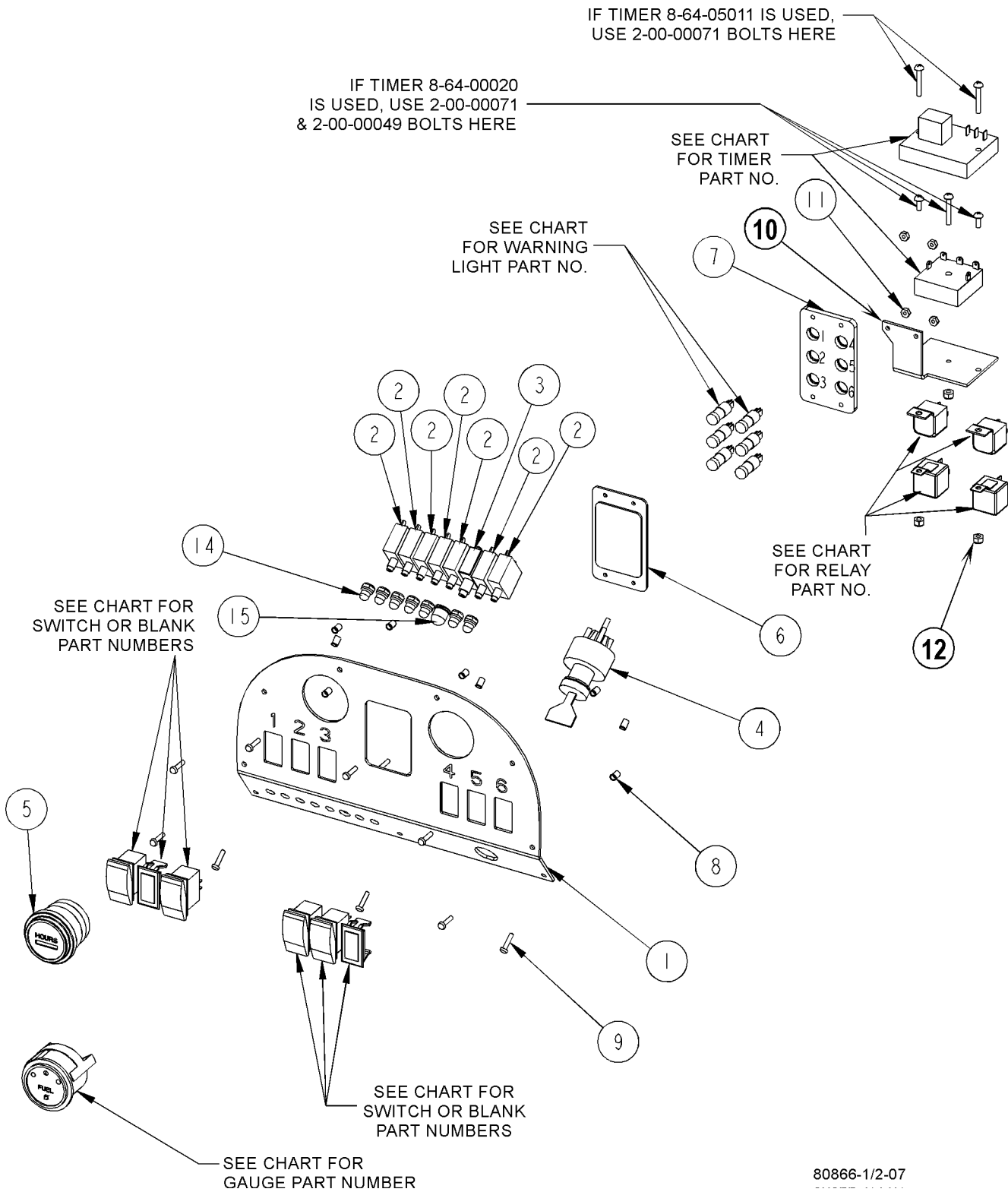
= Revised or new since last update



06-5	ENGINE - 3 CYL. KUBOTA DIESEL		
08-7	6150 - ZAOH		13

Item	Ref. No.	Qty	Description
1	0877-070	1	Engine, 3-cyl Kubota Diesel
	7-33-05153		Flywheel Housing: SAE-B (service part)
2	8-08-00835	2	Bracket, Engine Mtg
3	8-52-00173	2	Rail, Engine Mtg
4	8-75-01155	4	Isolator, Vibration
5	2-95-04182	8	Nut, 3/8-16 Fiber Insert
6	8-75-01222	2	Spacer, Engine Bracket
7	8-08-00956	1	Bracket, Air Filter
8	2-95-04388	2	Clamp, Hose
9	8-33-02405	1	Hose, Air Inlet
10	2-00-02216	3	Clamp, Hose
11	8-33-02363	1	Hose, Air Cleaner to Engine
12	8-24-04160	1	Air Cleaner Assy.
	8-24-04161	1	Element, Air Cleaner (service part)
13	7-82-00031	1	Switch, Water Temperature
14	8-64-00012	1	Relay
15	8-52-00199	1	Panel, Radiator Heat
16	8-13-07160	2	Clip, Heat Baffle
17	7-08-00763	1	Bracket, Throttle Mount
18	0895-145	1	Harness, Engine (not shown)
19	7-08-01262	1	Bracket, Forward/Reverse Cable
20	2-00-00519	1	Lock Washer, # 10 Med HS
21	2-00-01246	1	Nut, #10-24 Fiber Insert
22	2-00-00205	3	Screw, 1/4-20 x 1.000 HHC
23	2-00-00641	4	Nut, 1/4-20 Insert Fiber
24	2-00-03702	4	Washer, .625 x .281 x .063
25	2-00-02708	1	Screw, 5/16-18 x 1.000 HHM
26	2-00-00644	1	Nut, 5/16-18, Insert Fiber
27	2-00-00234	2	Screw, 3/8-16 x 1.50 HHC
28	2-00-00518	2	Lock Washer, Helical Spring
29	2-00-05279	2	Screw, M6 x 1.0 x 20 mm MHHC
30	2-00-00410	4	Flatwasher, .875 x .375 x .060
31	2-00-03940	2	Screw, #10 - 24 x .50 T/C HH
32	2-00-03266	4	Washer
33	2-00-00236	4	Screw, 3/8-16 x 2.50 HHC
34	2-00-04794	1	Screw, #10-24 x .625 BHS
35	2-00-00466	1	Flat Washer, .625 x .203 x .031
36	2-00-05490	1	Screw - M5 x 0.8 x 12 MM
37	2-00-05148	1	Screw - HHC M5 x 0.8 x 16 MM
38	2-00-00209	2	Screw, 3/8-16 x 1.25 HHC
39	8-24-04161	1	Filter Element, Primary (service part)
40	7-24-04105	1	Filter Element, Secondary (service part)
41	56109310	1	Pipe, PVC SCH 40
*	56504460	1	Filter, Fuel Water Assy

* = Optional, Not Included



80866-1/2-07

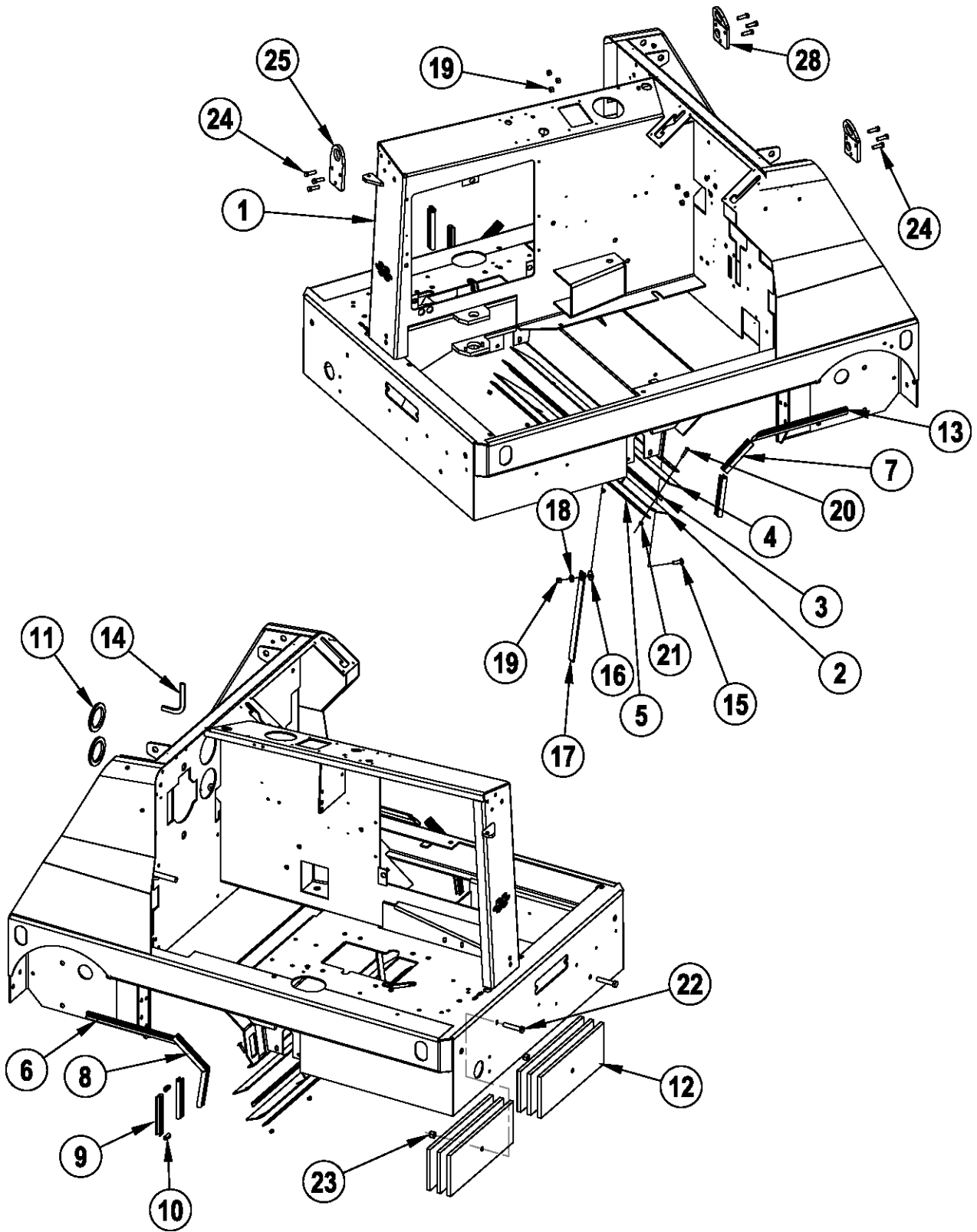
06-5	INSTRUMENT PANEL			
08-7	6150 - ZAOH			15

Item	Ref. No.	Qty	Description
1	8-52-00203	1	Panel, Instrument
2	8-64-00008	7	Circuit Breaker (15 amp)
3	7-64-00025	1	Circuit Breaker (25 amp)
4	7-82-00026	1	Switch, Anti-Restart Key
	2-60-02272		Ignition Key: (for 7-82-00026)
5	56478363	1	Gauge, Hour Meter
6	8-41-03014	1	Lens, Warning Light
7	8-58-05292-1	1	Plate, Warning Light
8	2-00-05324	9	Insert, #8-32 Threaded
9	2-00-05337	9	Screw, #8-32 x .75 BHSC
10	8-08-00948	1	Bracket, Timer
11	2-00-01372	4	Nut, #8-32 Fiber Insert Lock
12	2-00-01246	3	Nut, #10-24 Elastic Stop
13	0895-142	1	Harness, Instrument Panel (not shown)
14	8-11-00044	7	Boot
15	56459369	1	Boot, Reset Button

SWITCH POSITIONS						
	HEAD LIGHTS	WORK LIGHT	GLOW PLUG	FILTER SHAKER	DUST CONTROL	THROTTLE
DIESEL	8-82-00072	2-00-05375	8-82-00073	8-82-00073	8-82-00072	2-00-05375

0880-646 REAR WORK LIGHT-GAS, LP, DIESEL- (POSITION 2): 8-82-00072

	LIGHT POSITIONS		GAUGE	TIMER	RELAY (2 PER)
	1 - 3	4 - 6			
DIESEL	7-40-05052	7-40-05053	8-48-05032	8-64-05011	8-64-05009



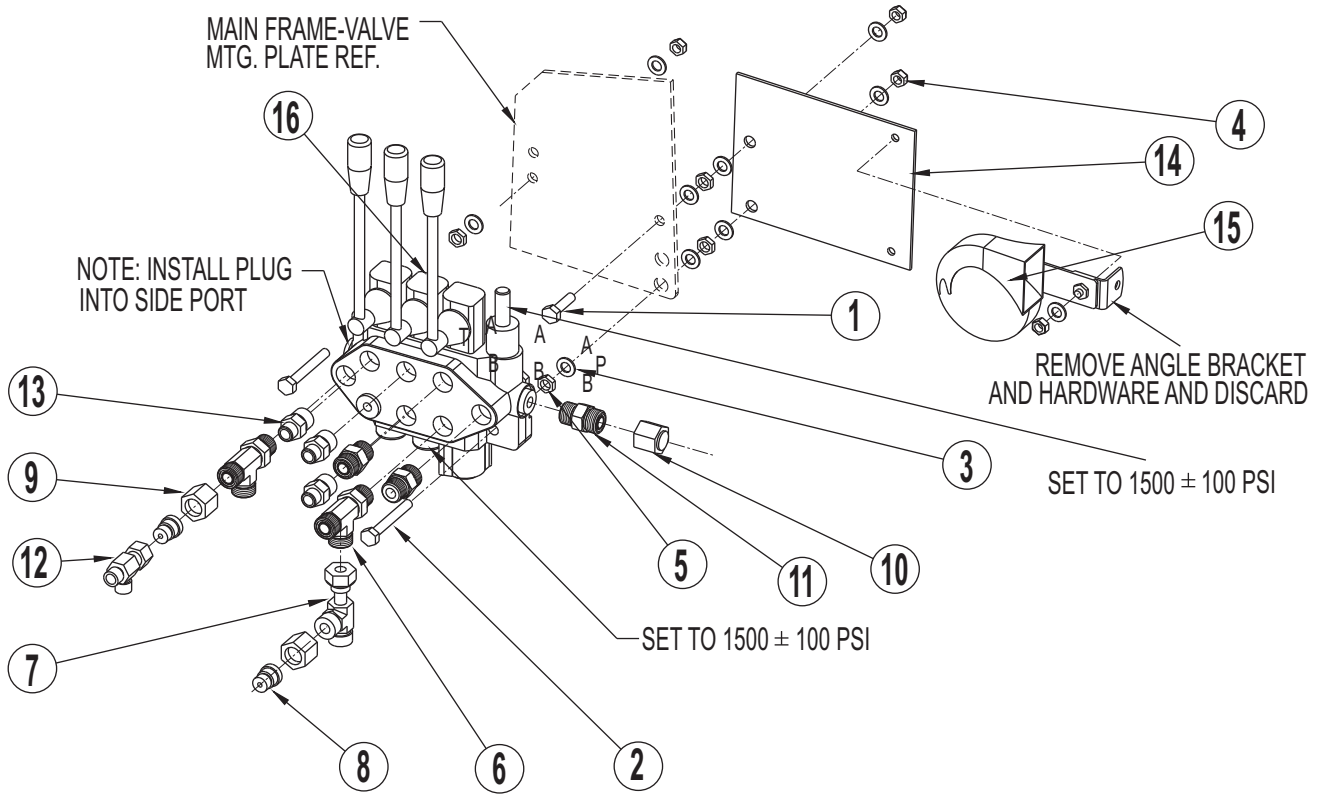
06-5

BROOM CHAMBER, FLAPS, & SEALS/LIFT HOOKS

08-7

6150 - ZAOH**17**

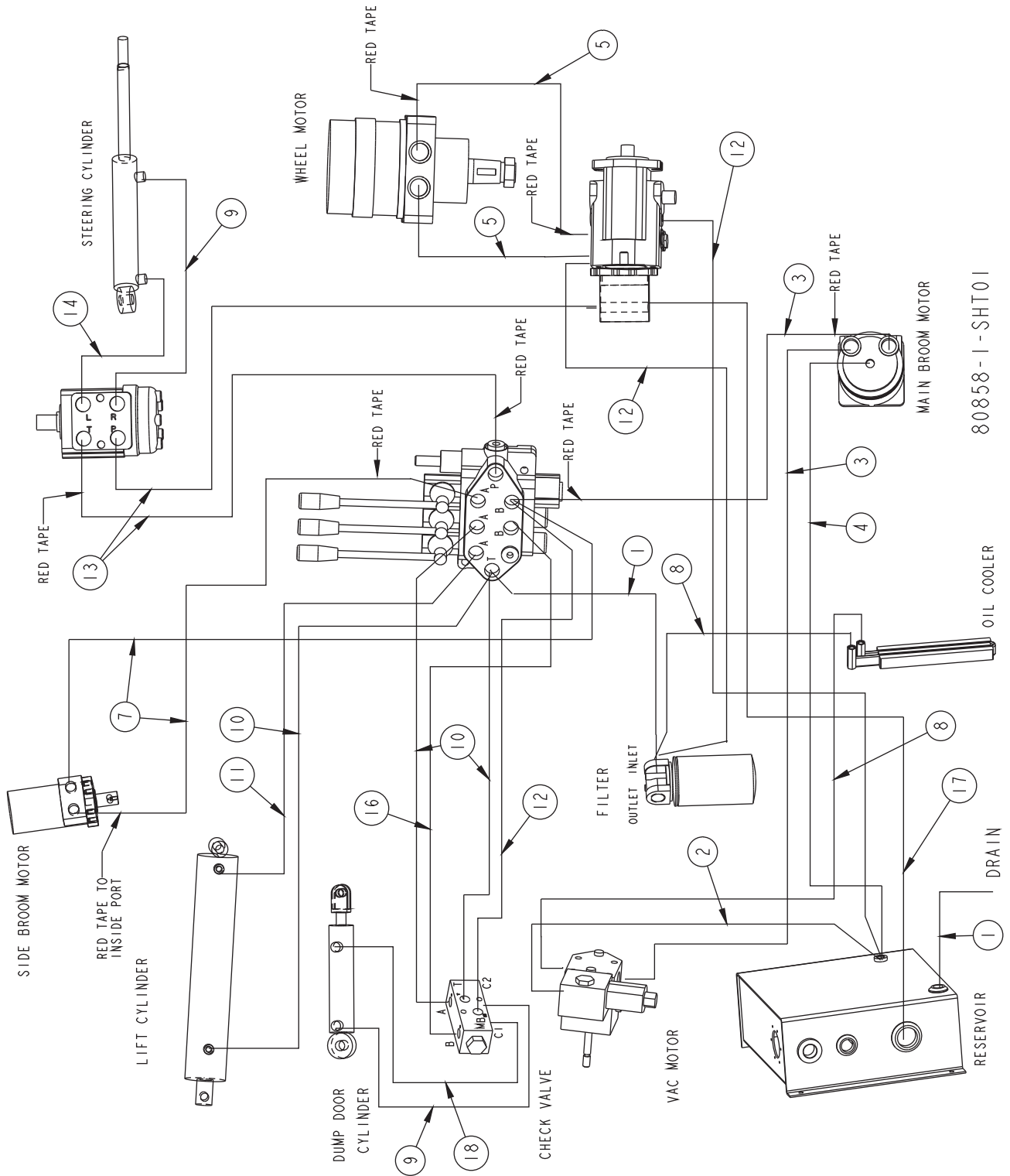
Item	Ref. No.	Qty	Description
1	8-27-07121	1	Frame Weldment
2	8-25-08213	1	Flap, Broom Chamber Outer
3	8-13-07143	1	Clamp, Broom Chamber Inner
4	8-25-08214	1	Flap, Broom Chamber Inner
5	8-13-07144	1	Clamp, Broom Chamber Outer
6	8-29-00257	1	Gasket
7	8-29-00232	1	Gasket
8	8-29-00234	1	Gasket
9	8-29-00233	3	Gasket
10	8-21-04048	2	Edging
11	7-21-03003	2	Edging
12	8-89-04016	6	Weight, 13.5 lbs.
13	8-29-00256	1	Gasket
14	8-21-04015	1	Edging
15	2-00-05187	1	Bolt Carr. 3/8-16 x 1.25 GR5 ZN
16	2-00-03829	1	Lk Wash Int/Ext Tooth ZN
17	56416517	1	Static Strap
18	2-00-04801	1	Wshr-Flat .875 x .380 x .120 TH ZN
19	2-95-04182	10	Nut - EL. Stop 3/8-16 ZN PL
20	2-00-01951	5	Carriage Bolt, 1/4-20 x 1.250
21	2-00-00641	5	Nut, 1/4-20 Insert Fiber
22	2-00-00247	2	Screw, 1/2 - 13 x 2.500 HHC
23	2-00-04936	2	Nut, 1/2 - 13 Fiber Lock
24	2-00-04705	9	Bolt, 3/8-16 x 1.25 LG
25	7-08-01320	1	Bracket, Rear Lift Eye
28	7-08-01319	2	Bracket, Front Lift Eye



06-5	CONTROL AND RELIEF VALVE		
08-7	6150 - ZAOH		19

Item	Ref. No.	Qty	Description
1	2-00-00207	1	Screw, Hex Head 5/16-18 X 1.25"
2	2-00-00228	2	Hex Screw, 5/16-18 X 2.5
3	2-00-00409	10	Flat Washer, .687 X .344 X .062
4	2-00-00644	4	Nut, Hex, Insert Fiber, 5/16-18
5	2-00-02369	4	3/8-16 Nut
6	2-00-04924	2	Fitting- 3/4-16 X 13/16-16 Tee
7	2-00-04928	1	Fitting-13/16-16 X 13/16-16 Tee
8	2-00-04929	2	Fitting, -.08 ORFS X -.04 ORFS Reducer
9	2-00-04939	2	Fitting-Nut for Reducer 8ORS
10	2-00-04957	1	Fitting-Cap 8ORS
11	2-00-04970	3	Fitting, Str. -8 ORS X -8 SAE
12	2-00-05162	1	Fitting-Run Tee 4ORS
13	2-00-05264	3	Fitting-Connector #8SAE - #4ORS
14	8-08-00956	1	Bracket - Air Cleaner
15	8-32-09013	1	Horn
16	8-88-00060	1	Control Valve
[]	7-88-00068	A/R	Relief Valve (2500) (replacement part for 8-88-00060)
[]	7-70-00095	A/R	Seal Kit (replacement part for 8-88-00060)
[]	56109168	A/R	Knob (replacement part for 8-88-00060)
[]	56504492	A/R	Boot, Neoprene (replacement part for 8-88-00060)
[]	56504493	A/R	Handle, M10 x 180 (replacement part for 8-88-00060)

[] = Not Shown



06-5

HYDRAULIC HOSE DIAGRAM

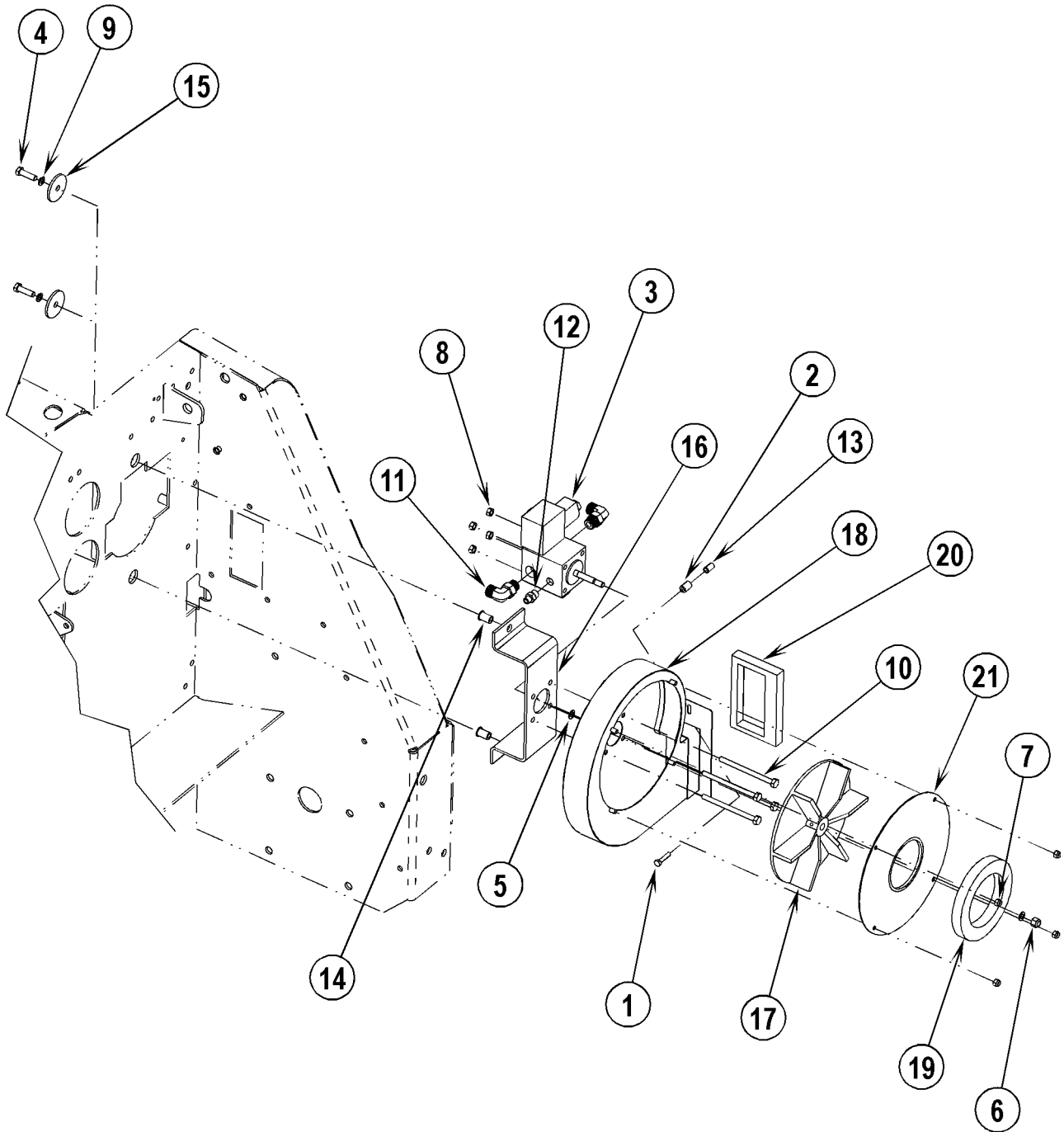
07-3

6150 - ZAOH

21

Item	Ref. No.	Qty	Description
1	8-33-02193	2	#8 x 18.0" 0-0 ORS
2	8-33-02329	1	#4 x 30.0" 0-90 ORS
3	8-33-02325	2	#8 x 65.0" 0-0 ORS
4	7-33-02193	1	#4 x 49.0" 0-90 ORS
5	8-33-02191	2	#8 x 56.50" 0-0 ORS
7	8-33-02213	2	#8 x 88.0" 0-0 ORS
8	8-33-02419	2	#8 x 20.5" 0-0 ORS
9	8-33-02184	2	#4 x 50.5" 0-0 ORS
10	8-33-02199	3	#4 x 24.5" 0-90 ORS
11	7-33-02225	1	#4 x 38.0" 0-90 ORS
12	8-33-02176	3	#4 x 21.0" 0-90 ORS
13	7-33-02187	2	#8 x 42.0" 0-0 ORS
14	8-33-02179	1	#4 x 46.0" 0-0 ORS
16	7-33-02189	1	#4 x 26.0" 0-90 ORS
17	7-33-02700	1	3/4" ID Gates GMV (11")
18	8-33-02182	1	#4 x 42.5" 0-0 ORS

NOTE: ITEMS 1 - 16, 18 ARE PART OF HOSE KIT 0860-670-1



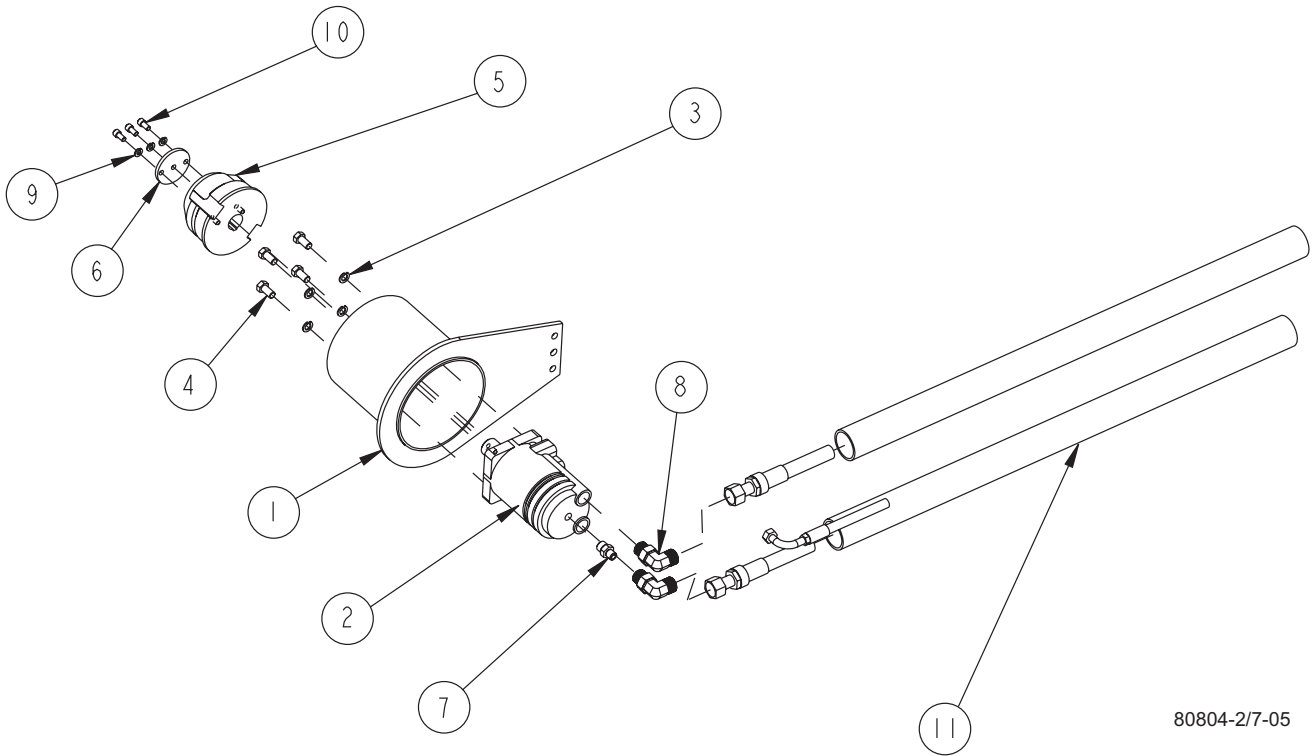
06-5

VAC FAN ASSEMBLY

07-3

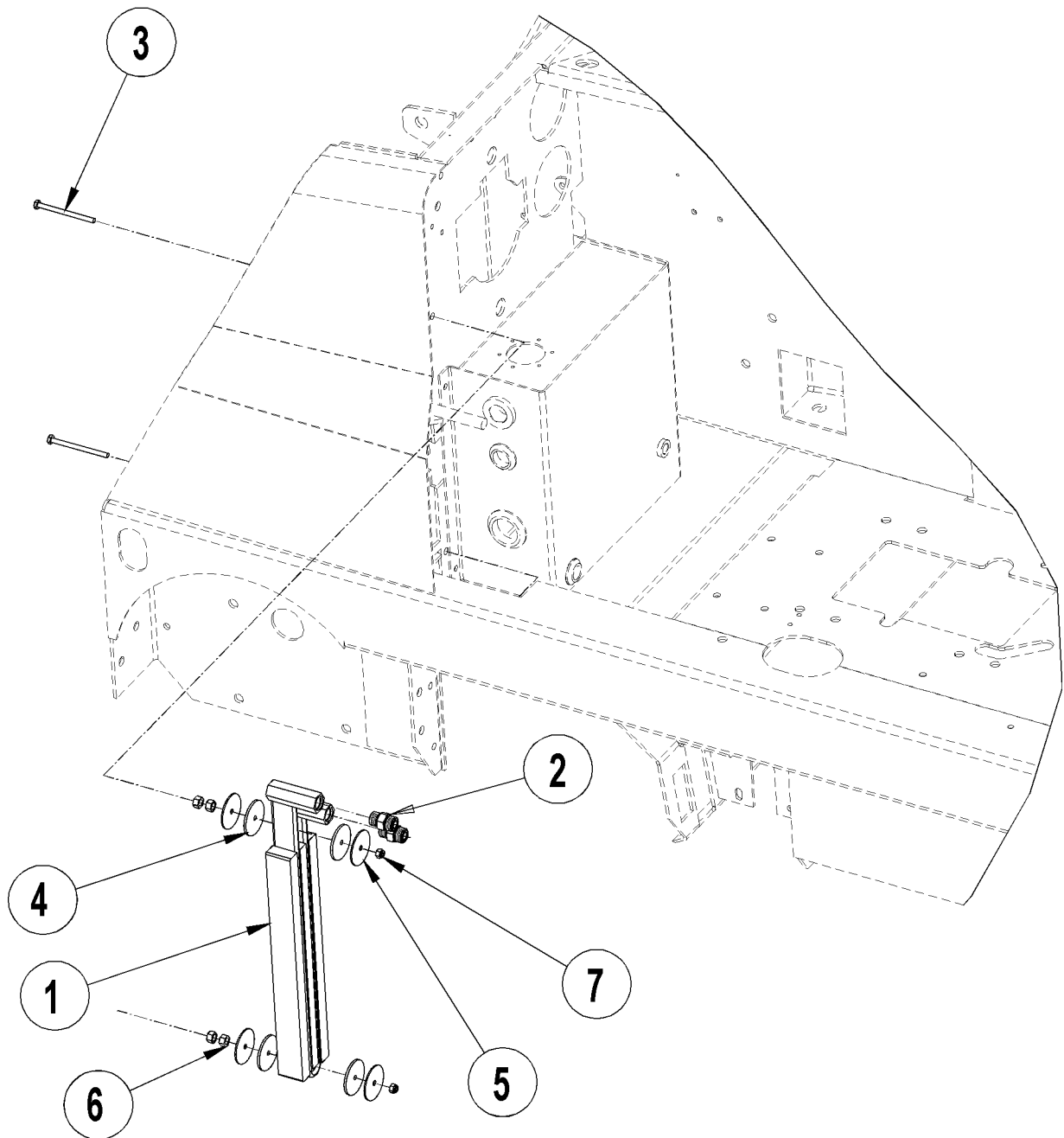
6150 - ZAOH**23**

Item	Ref. No.	Qty	Description
1	56001878	1	Scr, Hex 1/4-20 x 1.25
2	56109263	1	Spacer
3	0882-064	1	Vacuum Motor
4	2-00-00209	2	Bolt, Hex Head, 3/8-16 x 1.25"
5	2-00-00484	2	Flat Washer, .625 x .375 x .046
6	2-00-00632	1	Nut, 5/16-18, Insert Fiber
7	2-00-00641	4	Nut, Fiber Insert 1/4-20
8	2-00-00644	4	Nut, Hex, Insert Fiber, 5/16-18
9	2-00-02310	2	Washer-Lock, 3/8", Helical Spring
10	2-00-02655	4	Bolt-Hex Head, Finished, 5/16-18
11	2-00-04885	2	Fitting-90° Elbow (O-Ring)
12	2-00-04895	1	Adapter, 7/16 ORB - 9/16 ORFS
13	2-00-05261	1	Nutsert, 1/4-20
14	2-00-05347	2	Threaded Insert 3-8-16
15	2-95-04689	2	Washer-Axle
16	8-08-00842-1	1	Bracket, Vac Fan
17	8-23-00013	1	Impellor
18	8-72-00005-1	1	Shroud, Vac Fan
19	8-29-00183	1	Gasket - Blower
20	8-29-00230-1	1	Gasket
21	8-30-05169	1	Weldment-Guard Plate



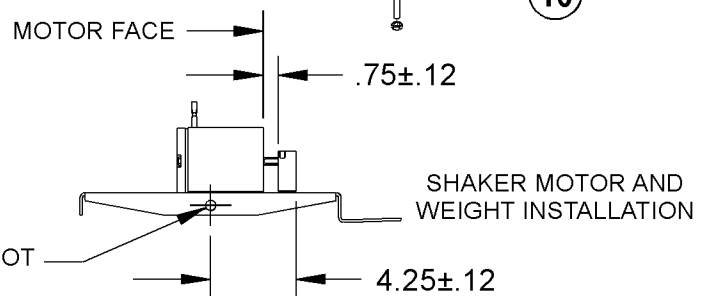
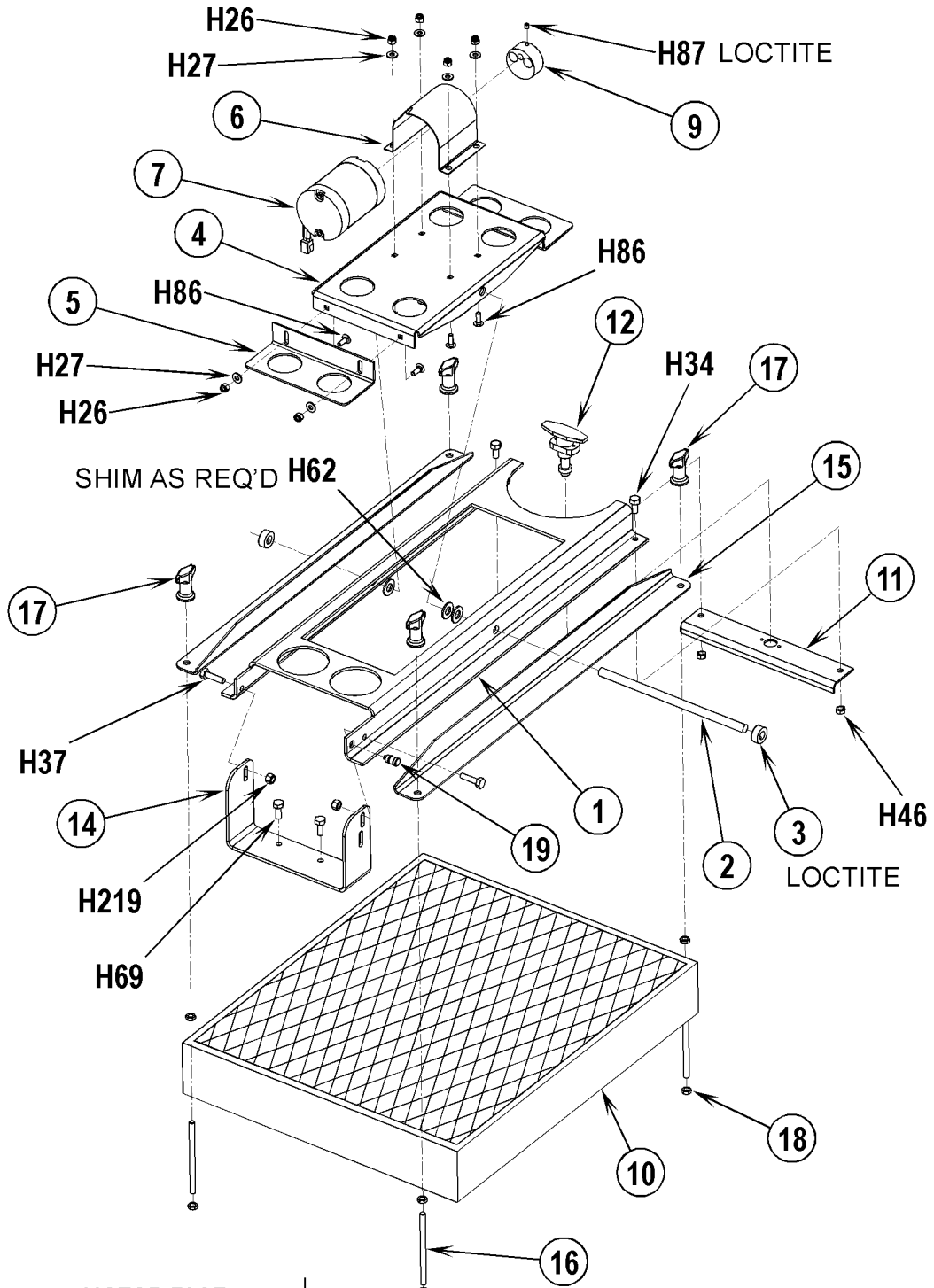
80804-2/7-05

Item	Ref. No.	Qty	Description
1	8-16-00041	1	Driver, Broom Arm
2	0882-040	1	Motor, Hydraulic
3	2-00-02310	4	Lock Washer, 3/8 Helical Spring
4	2-00-00232	4	Bolt, 3/8-16 x .75 Fin. Hex Head
5	8-33-09046-1	1	Hub, Broom Driver
6	8-58-05160	1	Lock Plate, Broom Driver
7	2-00-04895	1	Fitting, Straight Connector
8	2-00-04885	2	Fitting, 90° Elbow (O-Ring)
9	2-00-00518	3	Lock Washer, 1/4 Helical Spring
10	2-00-03039	3	Set Screw, 1/4-20 x .625 HSHC
11	8-72-03018	2	Sleeve, Hydraulic Hose



Item	Ref. No.	Qty	Description
1	8-62-01018	1	Oil Cooler NOTE 1
2	2-00-04970	2	Fitting, Str. -8 ORS X -8 SAE
3	2-00-04596	2	Screw, 1/4-20 X 3.50", Hex Head
4	2-00-05028	4	Washer-Flat 2.00 OD X .281 X .125
5	2-00-05236	4	Washer-Flat 2.00 OD X .28 X .08
6	2-00-02360	4	Nut, Hex, 3/8-16
7	2-00-00641	2	Nut, Fiber Insert 1/4-20

NOTE 1: Oil cooler previously was part number "8-62-01010" and had the fittings built-in to the cooler. The separate fittings "2-00-04970" were not used with that oil cooler.



06-5	FILTER SHAKER			
08-7	6150 - ZAOH			27

Item	Ref. No.	Qty	Description
1	8-13-07139-1	1	Clamp, Filter
2	8-55-08119	1	Pin, Shaker Pivot
3	2-00-03589	2	Collar
4	8-58-05284	1	Shaker Plate
5	8-03-04302	1	Shaker Arm
6	8-16-07406	1	Filter Shaker Motor Cover
7	0860-623	1	Filter Shaker Motor (12 vdc) NOTE 1
8*	0860-624	1	Filter Shaker Motor (36vdc)
9	8-89-04019	1	Weight
10	8-24-04148	1	Filter
	8-24-04148-2		POLY Filter Option
11	8-13-07121	1	Shaker Mounting Angle
12	8-41-00053	1	Latch
13	8-90-07433	Ref.	Wire, Hopper Shaker
14	8-08-00826-1	1	Shaker Mounting Angle
15	56109150	2	Bracket, Holddown
16	56109163	4	Rod, Threaded
17	56370711	4	Knob
18	56009086	8	Nut, Hex Jam 5/16-18
19	7-41-00050	1	Latch, Dust Control

Item 13 is shown on the Connection Drawing on page 176, 176A, and 176B

HARDWARE USED:

H26	2-00-00641	6	Nut, 1/4-20 Insert Fiber
H27	2-00-03702	6	Washer, .625 x .281 x .063
H34	2-00-00208	2	Screw, 5/16-18 x .750 HHC
H37	2-00-00207	2	Screw, 5/16-18 x 1.250 HHC
H46	2-00-00644	2	Nut, 5/16-18, Insert Fiber
H62	2-00-00405	3	Flat Washer, 1.063 x .531 x .094
H69	2-00-01255	2	Screw, 5/16-18 x .875 HHC
H86	2-00-03575	6	Carriage Bolt, 1/4-20 x .750
H87	56001841	1	Set Screw, 1/4-20 x .25
H219	56002701	2	Nut, Serrated Flange 5/16-18

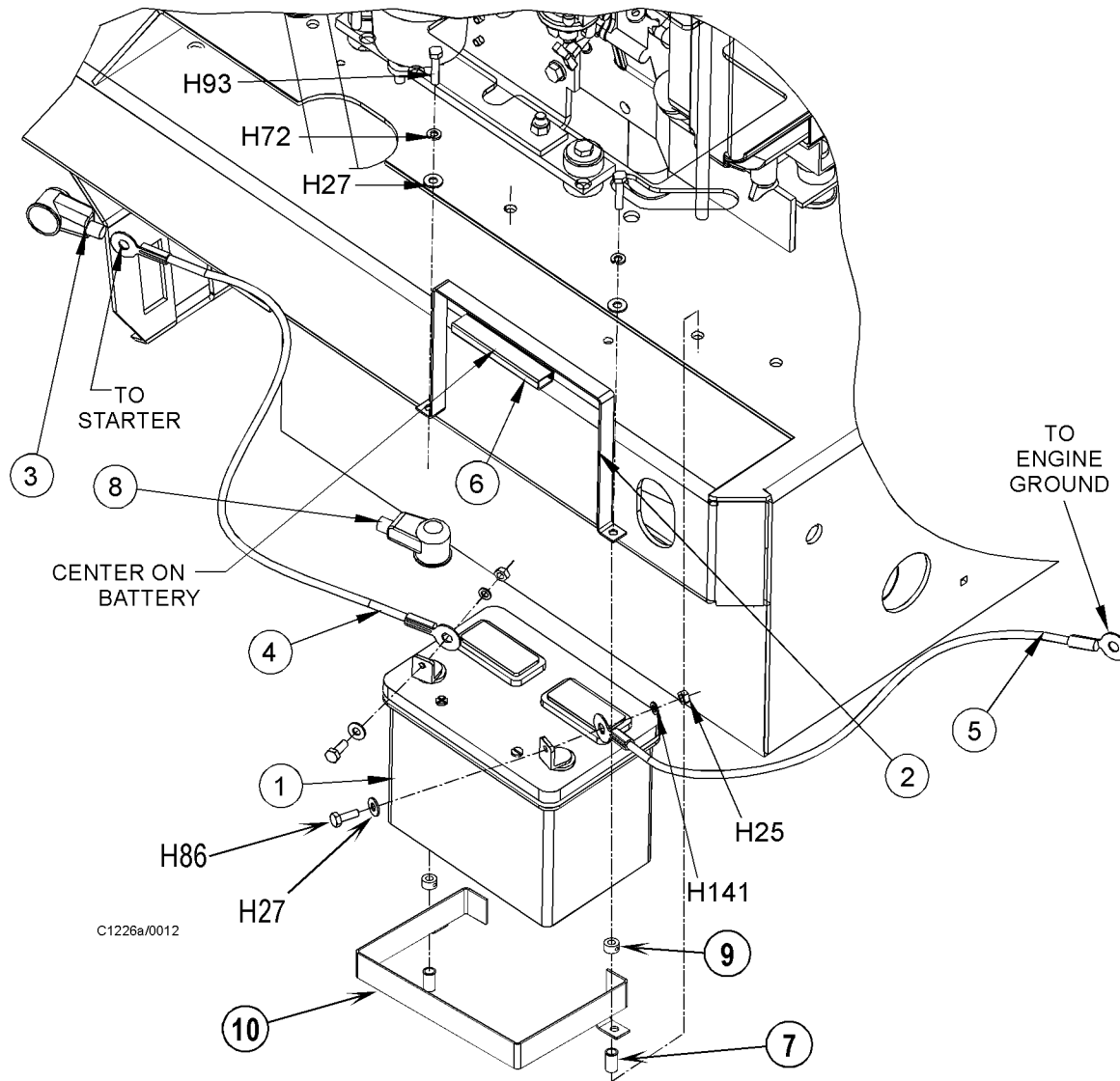
NOTE 1: Filter Shaker Kit 0880-705 contains; Filter Shaker Motor Assy 0860-623, Filter Shaker Motor Cover 8-16-07406, Weight 8-89-04019 & Socket Set Screw 1/4-20 x .25 56001841.

For Battery Machine Only

Frame and Shaker Adjustment Instructions:

1. Adjust Frame to Filter - Adjust filter frame pivot bolts and pawl of filter frame latch such that filter gasket compress approximately 1/8".
2. Adjust shaker to filter - Adjust shaker arm (8-03-04302) such that it and shaker plate (8-58-05273) force filter screen to contact filter media.

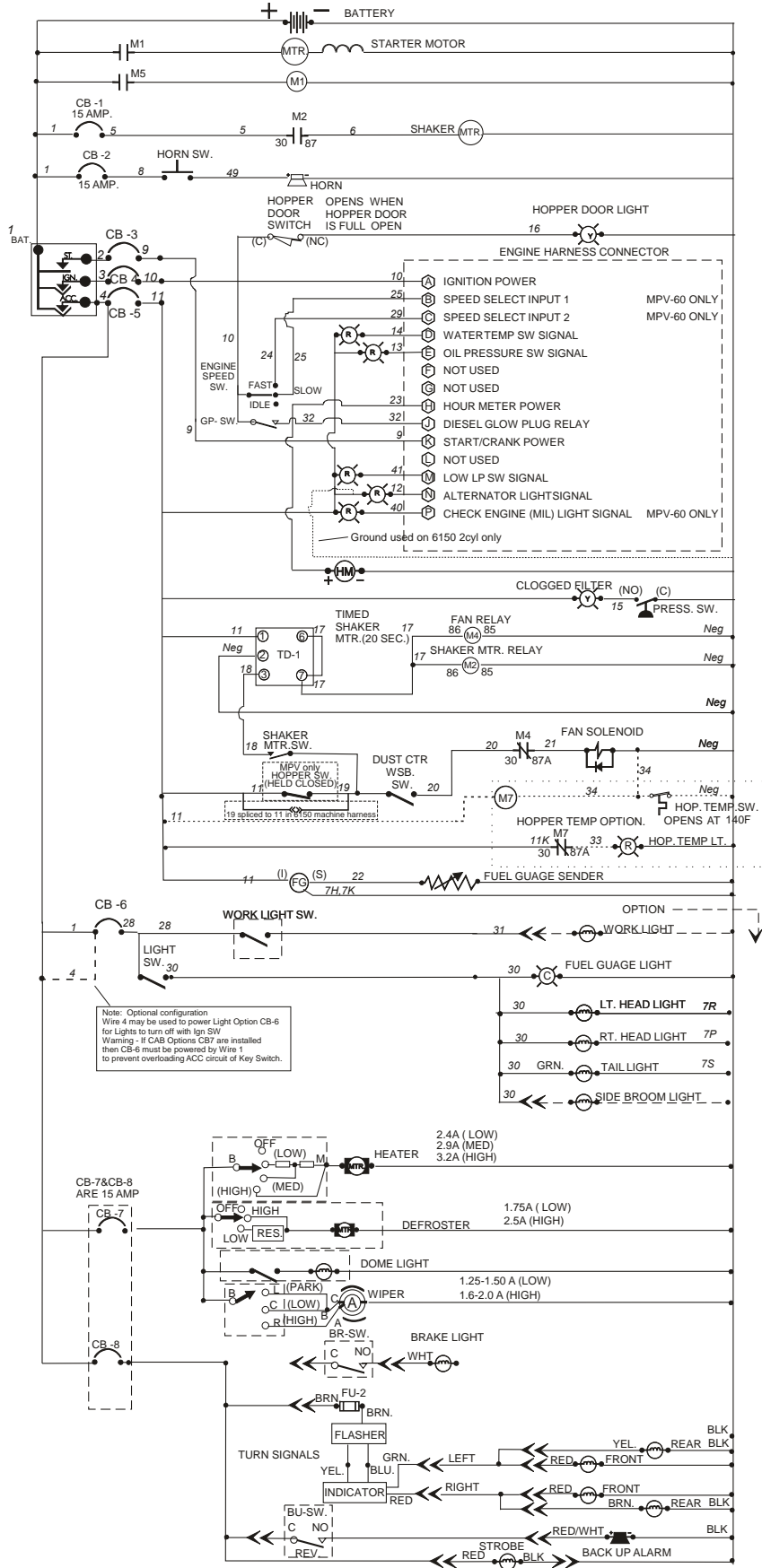
NOTE: Do not compress filter media with shaker

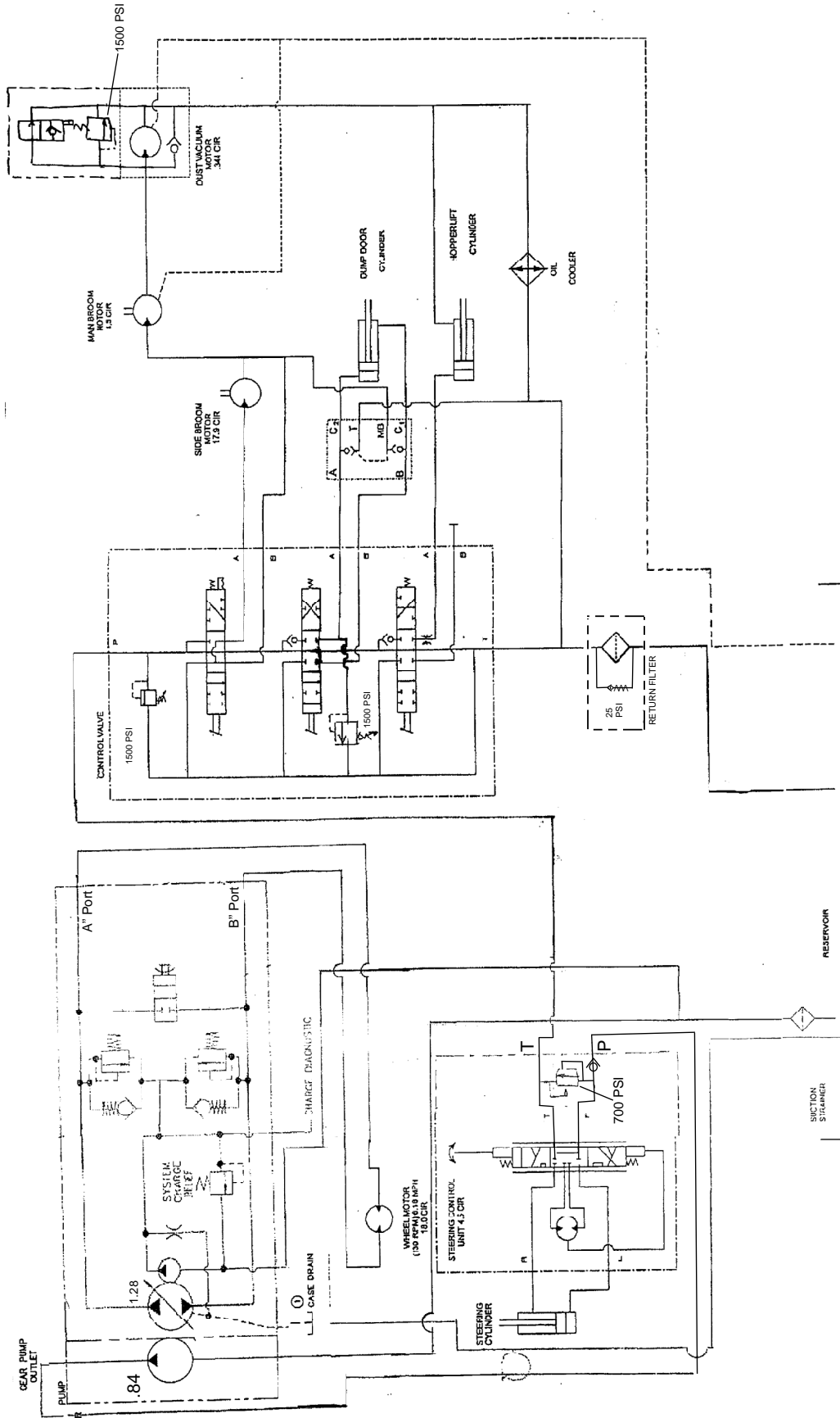


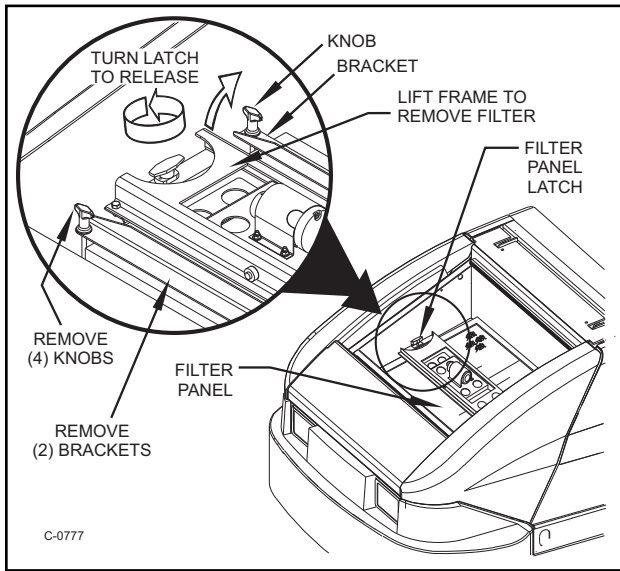
Item	Ref. No.	Qty	Description
1	0775-117	1	Battery
2	8-79-00126	1	Strap - Battery
3	2-00-04952	1	Boot - Red
4	8-90-07436	1	POS Cable
5	8-90-07435	1	NEG Cable
6	8-20-06039	1	Duct - Wire
7	2-00-05261	2	1/4-20 Thd Insert
8	2-00-04203	1	Rubber Terminal Boot
9	7-15-01031	2	Collar-Clamp
10	7-81-00291	1	Support, Battery

HARDWARE USED:

H25	2-00-00594	2	Nut, Hex 1/4-20 x .437 x .218
H27	2-00-03702	4	Washer, .625 x .281 x .063
H72	2-00-00518	2	Lock Washer, Helical Spring
H86	2-00-00221	2	Bolt-Hex Head, Finished, 1/4-20x3/4 Lg
H93	2-00-00222	2	Screw, 1/4-20 x 1.250 HHM
H141	2-00-00501	2	Lock Washer, Int.







FILTER PANEL LATCH

The filter panel is located in the hopper filter compartment and will need to be removed periodically for cleaning or replacement. Removal of the filter panel requires no tools. The hopper cover must be opened to gain access to the filter compartment. The panel filter is held in place by two brackets and a hinged frame and latch.

To remove the panel filter; remove the (4) knobs and (2) brackets, then turn the latch counter clockwise and lift the hinged frame.

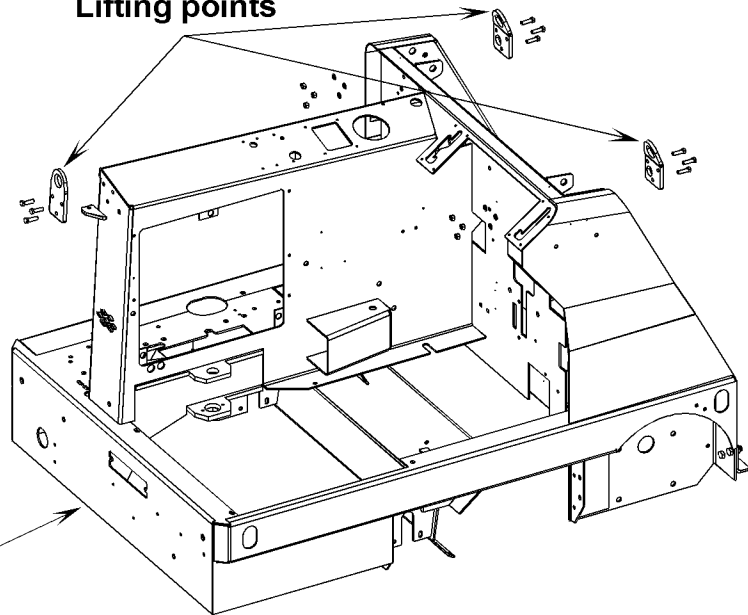
The panel filter can now be lifted out and cleaned or replaced. (See "To Clean the Dust Control Filter" in this manual).

To install the replacement panel filter, lower the frame and turn the knob clockwise to lock the filter in place. Then replace the two brackets and knobs. Hand tighten the knobs only.

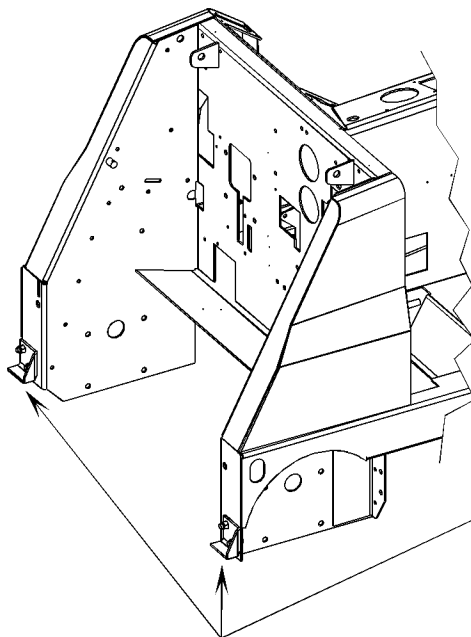
TO CHECK THE DUST CONTROL FILTER

1. Park the sweeper on a smooth level surface. Turn the key switch to the "O" position and engage the parking brake.
2. Raise the hopper lid for access to the filter compartment.
3. Remove the (4) knobs and (2) brackets, then turn the latch, lift the filter frame and remove the filter.
4. Inspect the panel filter for tears and clean or replace if necessary.
5. Reinstall the filter, lower the filter frame and engage the filter latch. Then replace the two brackets and knobs. Hand-tighten the knobs only.
6. Close the hopper cover.

Lifting points



Jacking points



American-Lincoln®

14600 21st Avenue North
Plymouth, MN 55447-3408
www.americanlincoln.com
Phone: 800-331-7692
Fax: 877-877-2586
©2009 American-Lincoln