



Electronic Service Manuals

This electronic document is provided as a service to our customers. We do not create the contents of the information contained in this document. Should you have detailed questions pertaining to the information contained in this document, you may contact Michco, or the manufacturer which provided the original information in this electronic deliverable. Michco's only part in this electronic deliverable was the electronic assembly process.

You may contact Michco through the following methods:
Phone (517) 484-9312 or (800) 331-3339 MI, OH, IN only
2011 N. High St. -- Lansing, Michigan -- 48906
Fax: (517) 484-9836
Email: CustServ@Michco.com
Web site: www.Michco.Com
Parts Web site: www.FloorMachineParts.Com

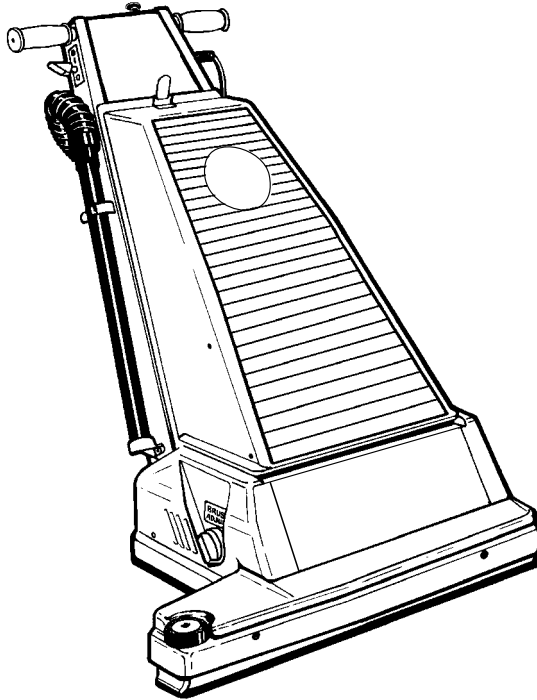
Order Parts on Line at:
www.FloorMachineParts.Com

Directly to Parts & Service:
By Email: **Shop@Michco.com**
By Fax: (517) 702-2041
By Voice: Use numbers above.

Serving the Cleaning Industry Since 1922

Notice: All copyrighted material remains property of original owners, all trademarks are property of respective owners. Manuals are subject to Manufacturer's reproduction limitations. Originals or reproductions were provided by manufacturers through a request. We make no warranty as to the correctness of information provided in this document and you assume all risk.

GU 700



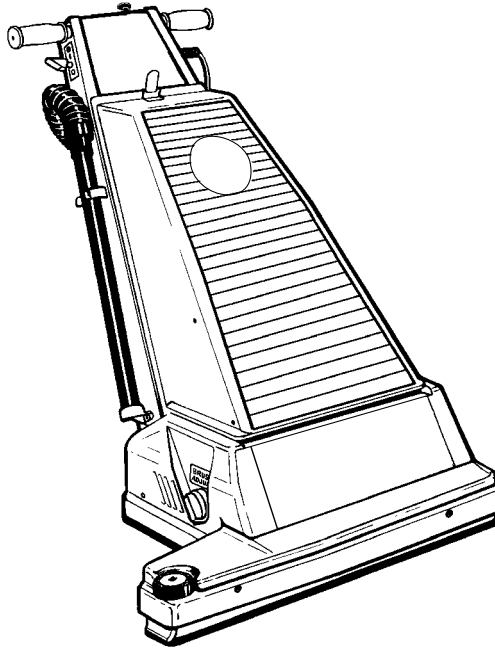
PARTS LIST **Nilfisk MODEL 56331450**



Nilfisk
Advance

setting standards

6/97 revised 10/00 FORM NUMBER 56042329
BOOK B SECTION 2.9.1

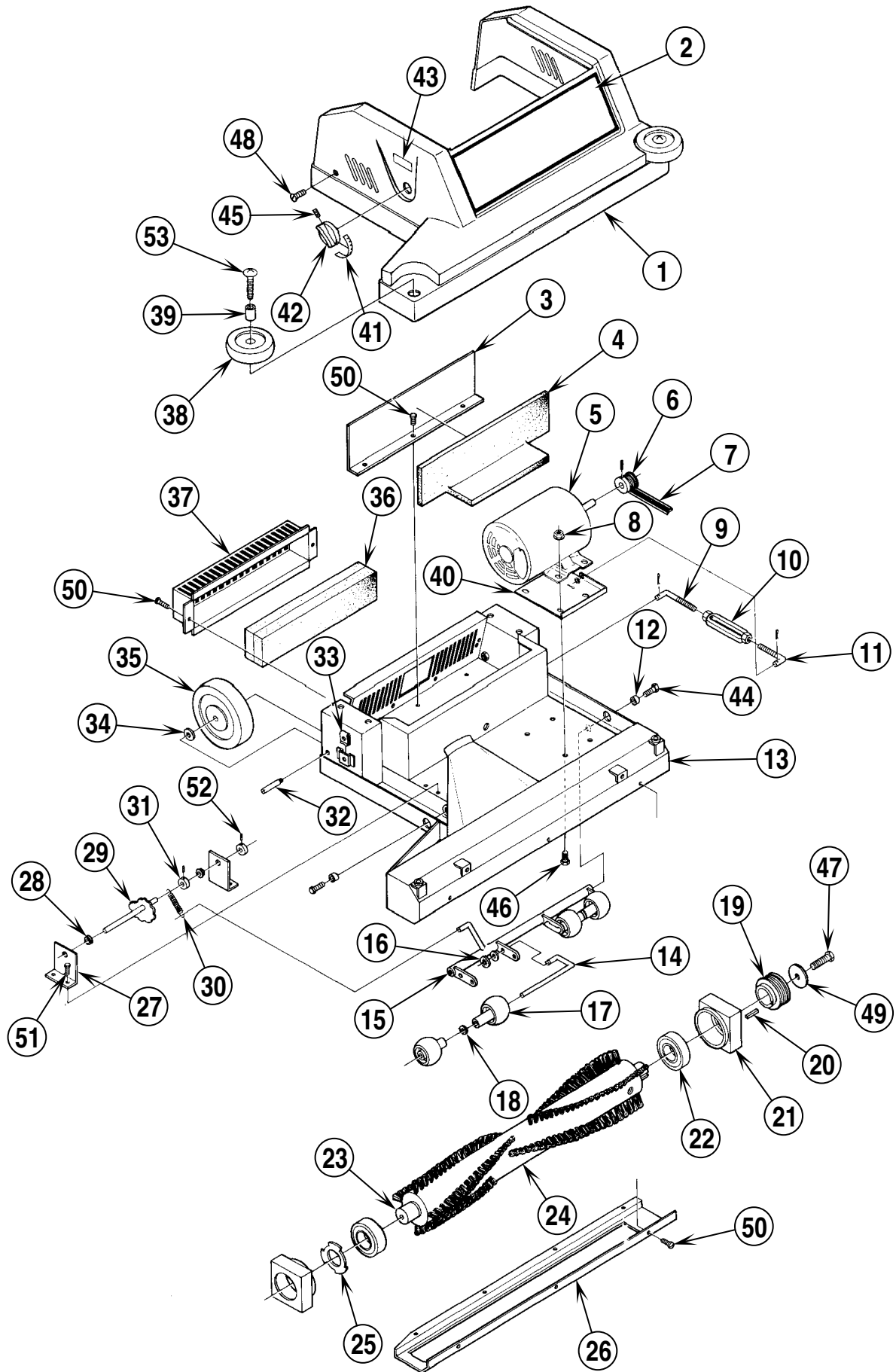


DESCRIPTION	PAGE
Base Assembly	B 2.9.1 3
Handle - Front	B 2.9.1 5
Handle - Rear	B 2.9.1 7
Shroud	B 2.9.1 9
Wiring Diagram	B 2.9.1 11

WHEN ORDERING PARTS

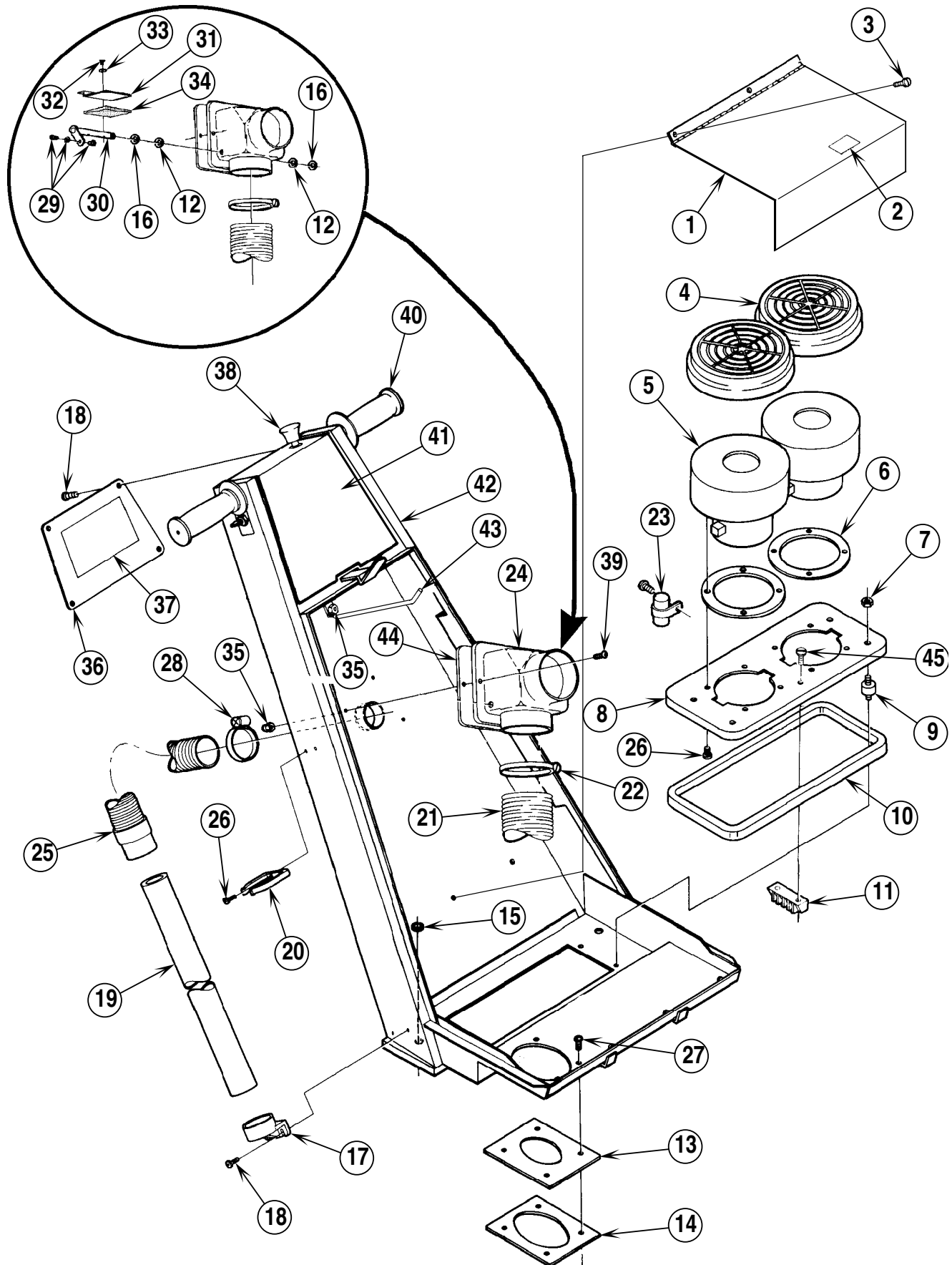
- * Use the 8 digit numbers from the "Ref. No." columns in this parts list.
- * Specify the model and serial number of the machine.
- * Use the space below to record the model and serial number for future reference.

Model _____ Serial No. _____



97-6	BASE ASSEMBLY	BOOK B		
00-10	GU 700	B	2.9.1	3

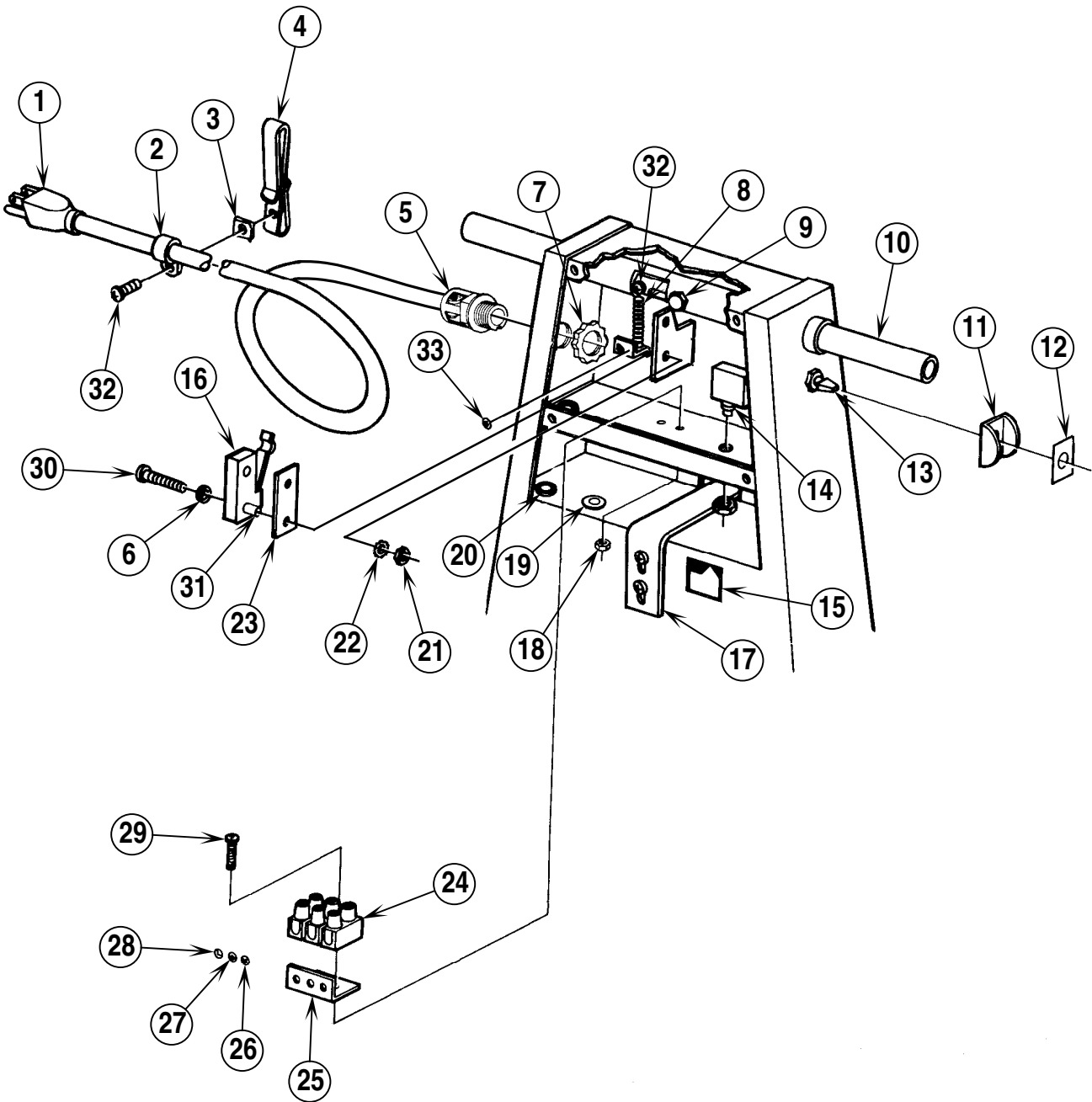
Item	Ref. No.	Qty	Description	Item	Ref. No.	Qty	Description
	56331453	1	Shroud Assembly (#1, 2, 43)	27	56331078	2	Bracket
1	56331454	1	Base Shroud	28	56329098	2	Bushing
2	56015984	1	Decal, Base Nilfisk GU700	29	56330458	1	Cam
3	56330314	1	Plate	30	56330642	1	Spring
4	56330577	1	Foam	31	56331076	2	Collar
5	56238161	1	Motor	32	56520845	2	Axle
6	56330681	1	Sheave	33	56328855	2	Nut
7	56331100	1	Belt	34	56009001	2	Washer
8	56002701	4	Nut, Hex Nyl Loc 5/16-18	35	56330607	2	Wheel
9	56331093	1	Rod	36	56330573	2	Filter
10	56206814	1	Turnbuckle	37	56330303	1	Grill
11	56350109	1	Rod	38	56324350	2	Wheel
12	56321532	2	Bushing	39	56360139	2	Bushing
13	56330552	1	Base	40	56238162	1	Motor Mount
14	56325224	2	Pin	41	56015780	1	Decal, Knob
15	56330613	1	Bracket	42	56324502	1	Knob
16	56325227	2	Nut	43	56023290	1	Decal, Brush Adjust
17	56323086	4	Roller	44	56002155	2	Scr, Hex Hd 1/4-20 x .75
18	56009125	2	Wsh, Spr	45	56002016	1	Scr, Soc Set Loc 8-32 x .31
19	56330675	1	Sheave	46	56001862	4	Scr, Hex Hd 5/16-18 x .50
20	56003235	1	Key	47	56002956	1	Scr, Hex Loc 5/16-18 x .75
21	56322420	2	Bearing Block	48	56002043	4	Scr, Hex Hd 10-24 x .38
22	56372773	2	Bearing	49	56002220	1	Wsh, Fit SAE 5/16
23	56330671	1	Shaft	50	56002834	12	Scr, Hex Hd 10-24 x .38
24	56330669	1	Brush	51	56002234	4	Scr, Hex Hd 3/8-16 x .62
	56330666	1	Brush Assembly (#19-25, 47, 49)	52	56009084	2	Scr, Soc Set Loc 10-24 x .19
25	56320153	1	Load Spring	53	56002825	2	Scr, Pan Phil 1/4-20 x 1.25
26	56330677	1	Shoe				



97-6	HANDLE - FRONT	BOOK B		
00-10	GU 700	B	2.9.1	5

Item	Ref. No.	Qty	Description	Item	Ref. No.	Qty	Description
1	56331351	1	Tray	26	56009039	10	Scr, Hex Thd Form 10-24 x .50
2	56023252	1	Decal, Filter	27	56001818	4	Scr, Hex Hd 8-32 x .38
3	56014629	1	Decal, Caution	28	56329145	1	Hose Clamp
4	56384898	2	Filter	29	56442445	1	Wire Swivel
5	56300411	2	Vacuum Motor	30	56331356	1	Lever
*	56503017	2	Carbon Brush Set	31	56331345	1	Plate
6	56209325	2	Gasket	32	56009032	3	Scr, Hex Thd Form 6-32 x .50
7	56002708	8	Nut, Hex Nyl Loc 1/4-20	33	56002006	4	Wsh, Flt SAE #6
8	56330730	1	Mounting Plate	34	56331352	1	Gasket
9	56478684	4	Mount	35	56002768	9	Nut, Hex Nyl Loc 10-24
10	56330749	1	Gasket	36	56330344	1	Cover
11	56328062	1	Terminal Block	37	56023295	1	Decal, Wiring
12	56009045	4	Wsh, Spr 3/8	38	56331349	1	Cable
13	56330631	1	Gasket	*	56331350	1	Cable Support Bracket
14	56330634	1	Nut Plate	*	56321559	2	Grommet
15	56327409	3	Bushing	39	56217927	2	Rubber Washer
16	56003269	2	Ring, Ret. Ext. Type E 3/8	40	56388545	2	Grip
17	56331301	1	Wand Holder	41	56015985	1	Decal, Handle
18	56009012	12	Scr, Hex Thd Form 10-24 x .38	42	56331185	1	Handle
19	56331310	1	Wand	43	56331334	1	Bag Hook
20	56392171	1	Clamp	44	56331312	1	Gasket
*	56331350	1	Support	45	56009030	2	Scr, Pan Phil Thd Form 10-24 x .38
21	56331332	1	Hose	46	56002503	4	Scr, Hex Hd 10-24 x .40
*	56442011	1	P-Clamp	47	56002834	4	Scr, Hex Hd 10-24 x .38
22	56352829	2	Hose Clamp	*	56002768	2	Nut, Hex Nyl Loc 10-24
23	56331150	1	RFI Filter				
24	56331313	1	Housing				
25	56323718	1	Hose				

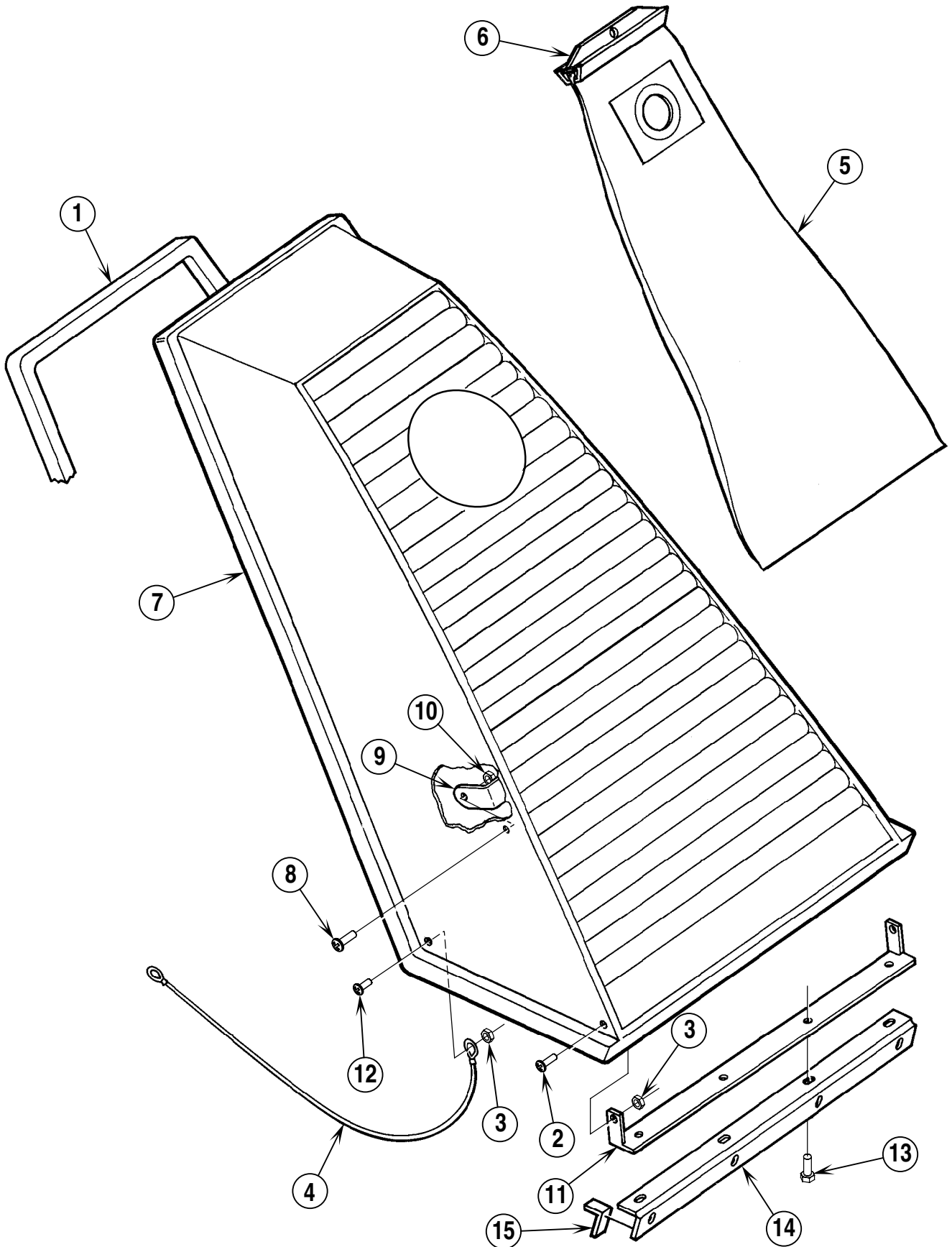
* = Not Shown



97-6	HANDLE - REAR	BOOK B		
	GU 700	B	2.9.1	7

Item	Ref. No.	Qty	Description
1	56330734	1	Power Cord
2	56342319	1	Clamp
3	56322504	1	Nut
4	56300187	1	Belt Clip
5	56323136	1	Strain Relief
6	56200190	2	Washer, Fiber
7	56009095	1	Nut, Conduit Lock 1/2-14
8	56328790	1	Spring
9	56234079	1	Scr, Machined Shank
*	56009052	1	Wsh, Int Shprf 5/16
10	56330898	1	Tube
11	56200352	1	Switch Guard
12	56014016	1	Decal, Switch
13	56301636	1	Switch
14	56329185	1	Brush Circuit Breaker
15	56014362	1	Decal, Reset
16	56014204	1	Decal, Caution
17	56330343	1	Latch
18	56001986	2	Nut, Hex Machine 4-40
19	56321559	1	Grommet
20	56331006	6	Grommet
21	56002838	2	Nut, Hex Nyl Loc 4-40
22	56002431	2	Wsh, Flt SAE #4
23	56331023	1	Insulator
24	56183523	1	Terminal Block
25	56183533	1	Insulator
26	56900231	1	Decal, Symbol "N"
27	56900135	1	Decal, Ground
28	56900232	1	Decal, Symbol "L"
29	56002183	2	Scr, Pan Phil 4-40 x .88
30	56003104	2	Scr, Hex Hd 4-40 x 1.00
31	56183545	2	Sleeve
32	56009034	2	Scr, Pan Phil Thd Form 8-32 x .38
33	56014119	1	Decal, Ground
34	56388019	1	Brush Switch

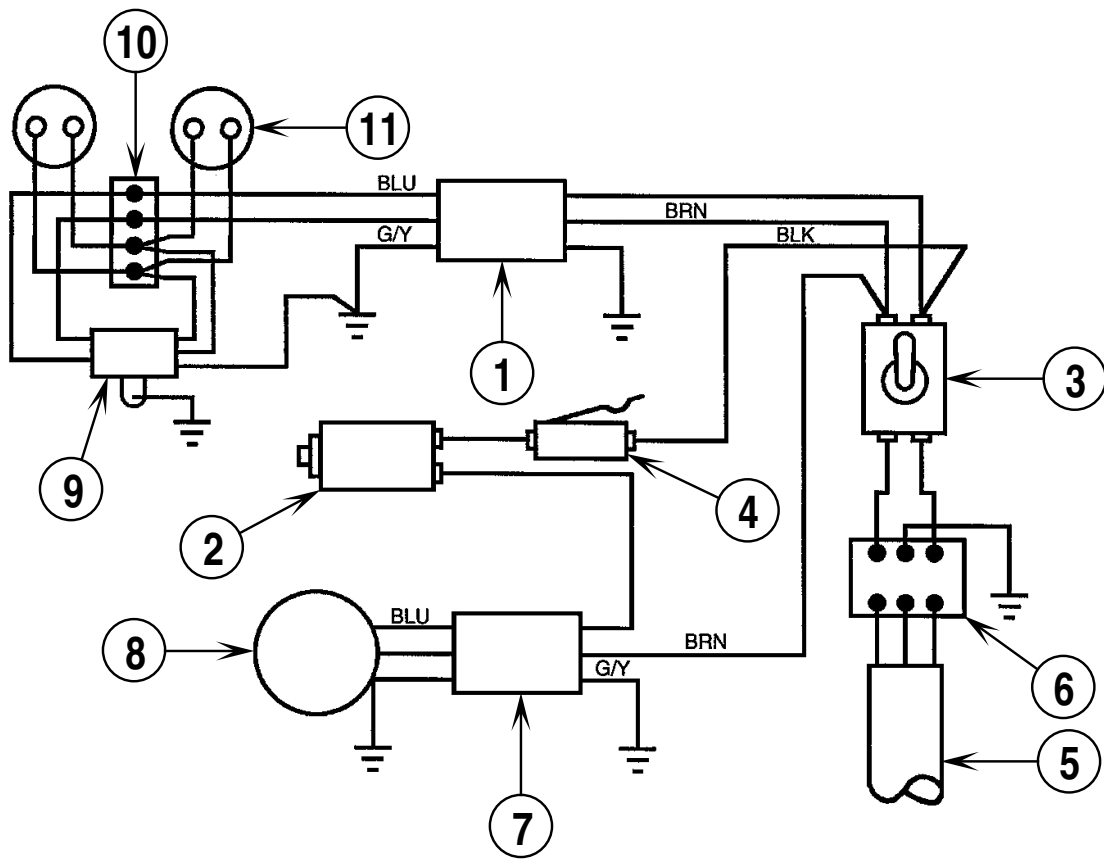
* = Not Shown



97-6	SHROUD	BOOK B		
00-10	GU 700	B	2.9.1	9

Item	Ref. No.	Qty	Description
	56331452	1	Shroud Assembly (#1-12)
1	56449227	7'	Gasket Material (215 cm)
2	56001830	2	Scr, Pan Phil 6-32 x .50
3	56002830	5	Nut, Hex Nyl Loc 6-32
4	56015314	1	Decal, Warning
5	56330589	1	Cloth Bag
*	56330690	1	Paper Bag (package of 6) (optional)
6	56330608	1	Bag Clip for Cloth Bag
7	56331323	1	Shroud
8	56001993	2	Scr, Pan Phil 10-24 x .50
9	56331318	1	Strap
10	56002768	2	Nut, Hex Nyl Loc 10-24
11	56330340	1	Nut Plate
12	56001904	2	Scr, Pan Phil 6-32 x .38
13	56002834	4	Scr, Hex Hd 10-24 x .38
14	56330347	1	Hinge
15	56330745	1'	Gasket Material (30 cm)
16	56330391	1	Wire Rope
17	56015986	1	Decal, Nilfisk Logo

* = Not Shown



97-6	WIRING DIAGRAM	BOOK B		
	GU 700	B	2.9.1	11

Item	Ref. No.	Qty	Description
1	56331136	1	Cord Set
2	56329185	1	Brush Circuit Breaker
3	56301636	1	Main Switch
4	56388019	1	Brush Switch
5	56330734	1	Cord Set
6	56183523	1	Terminal Block
7	56331138	1	Cord Set
8	56238155	1	Brush Motor
9	56331150	1	RFI Filter
10	56328062	1	Terminal Block
11	56300411	2	Vacuum Motor

DANMARK

Nilfisk-Advance Nordic A/S
 Myntevej 3, 8900 Randers
 ☎ 86 42 84 33 – Fax 86 41 19 55

NORGE

Nilfisk-Advance AS
 Enebakkn, 119, 0680 Oslo, Postboks 196, Manglerud,
 0612 Oslo
 ☎ 22 08 63 50 – Fax 22 08 63 63
 Distriktsrepresentanter over hele landet

SVERIGE

Nilfisk-Advance AB
 Sjöbjörnsvägen 5, 117 67 Stockholm
 ☎ 085 55 944 00 – Fax 085 55 944 30

FINLAND/ SUOMI

BERNER Ltd. Facotek Department
 Etäleranta 4B, 00130 Helsinki
 ☎ +358 9 1345 1382

AUSTRALIA

Nilfisk-Advance Pty. Ltd.
 ACN 003 762 623
 Head office: 17 Leeds Street, Rhodes, N. S. W. 2138
 ☎ (02) 9736 1244 – Fax (02) 9736 3910
 Customer Responce Centre:
 ☎ 1 800 011 013

BELGIQUE / BELGIË/ LUXEMBOURG

Nilfisk-Advance s.a./n.v.
 Doornveld/ Sphere Business Park
 Industrie Asse 3, nr 11 – bus 41
 1731 Zellik-Asse
 ☎ (02) 467.60.50 Fax (02) 463.44.16

CANADA

Nilfisk-Advance Ltd.
 396 Watline Avenue
 Mississauga, Ontario L4Z 1X
 ☎ (905) 712-3260 – Fax (905) 712-3255

DEUTSCHLAND

Nilfisk-Advance AG
 Siemensstraße 25-27
 25462 Rellingen
 ☎ (041 01) 3990 – Fax (04101) 399191
 Zentraler Kundenservice
 ☎ für die Industrie: 0180 535 67 97
 ☎ Institutionen und Gebäudereiniger: 0180 500 11 70

FRANCE

Nilfisk-Advance S.A.
 BP 246
 91944 Courtaboeuf Cedex
 ☎ (01) 69.59.87.00 Télécopie (01) 69.59.87.01

HONG KONG

Nilfisk-Advance Ltd.
 2001, 20/F HK Worsted Mills
 Industrial Building
 31-39 Wo Tong Tsui Street
 Kwai Chung, N.T.
 ☎ 2427 59 51 – Fax 2487 5828

IRELAND

Nilfisk-Advance Ltd.
 28 Sandyford Office Park
 Dublin 18
 ☎ +353 1 2943838 – Fax +353 1 2943845

JAPAN

Nilfisk-Advance Inc.
 3-4-9 Chigasaki Minami
 Tsuzuki-Ku Yokohama 224
 ☎ 045-942-7741 – Fax 045-942-6545

MALAYSIA

Nilfisk-Advance Sdn Bhd
 Lot 2, 1st. Floor
 Lorong 19/1A
 46300 Petaling Jaya
 Selangor Darul Ehsan
 ☎ 03-7568188 / 03-7568189 / 03-7568388 – Fax 03-7566828

NEDERLAND

Nilfisk-Advance B.V.
 Flevolaan 7, Postbus 341
 1380 AH Weesp
 ☎ 0294-462121 – Fax 0294-430053

NEW ZEALAND

Nilfisk-Advance Limited
 477 Great South Road, Penrose
 Auckland
 ☎ (09) 525 0092 – Fax (09) 525 6440

SCHWEIZ / SUISSE

Nilfisk-Advance AG
 Ringstrasse 19, 9533 Kirchberg/Wil
 ☎ 719 23 52 83 – Fax 719 23 84 44

SINGAPORE

Nilisk-Advance Pte. Ltd.
 22, Woodlands Industrial Park E1
 Singapore 757740
 ☎ (65) 759 9100 – Fax (65) 759 9133

TAIWAN

Nilfisk-Advance Ltd.
 1 F, No.23, Lane 132, Sec. 2
 Ta An Road, Taipei
 ☎ 700 22 68 – Fax 784 08 43

UNITED KINGDOM

Nilfisk-Advance Limited
 Newmarket Road
 Bury St. Edmunds
 Suffolk IP 33 3SR
 ☎ (01284) 763163 – Fax (01284) 750562

USA

Nilfisk-Advance Inc.
 14600 21st Avenue North
 Plymouth, MN 55447-3408
 ☎ +1 800 989 2235 – Fax 1 800 989 6566

Nilfisk-Advance of America, Inc.

300 Technology Drive
 Malvern, PA 19355
 ☎ (610) 647 647-6427

ÖSTERREICH

Nilfisk-Advance GmbH
 Vorarlberg Allee 46
 1230 Wien
 ☎ 1 616 58 30 – Fax 1 616 58 30 40

ESPAÑA

Nilfisk-Advance, S.A.
 Torre D'Ara
 Passeig del Rengle, 5 Pl.9-10
 E-08302 – Mataró (Barcelona)
 ☎ Tel. 93 741 24 00 – Fax: 93 757 80 20
 Central atención al cliente: 902 200 201
nilfisk@nilfisk-advance.es – www.nilfisk-advance.com
 Distribuidores y Servicio Técnico en toda España y Andorra

ITALIA

Nilfisk-Advance Italia Spa
 Località Novella Terza
 26862 Guardamiglio (LO)
 Italy
 ☎ +39 0377 414067-54 – Fax +39 0377 414097
www.nilfisk-advance.com

PORTUGAL

Nilfisk-Advance Lda.
 Rua Cândido de Figueiredo, 91-i, 1500-133 LISBOA
 ☎ 01/7784142 – Fax 01/7785613
 Porto 02/526766 – Fax 02/520739
 Açores 096/628092/3 – Fax 096/628129
 Madeira 091/228965 – Fax 091/228796

GREECE

Embiom S.A.
 Λεωφ. Βουλιαγμένης 60
 Αργυρούπολη
 164 52 Αθήνα
 ☎ 9950613 - Fax 9951680



Material composition of the Nilfisk GU 700

