



Electronic Service Manuals

This electronic document is provided as a service to our customers. We do not create the contents of the information contained in this document. Should you have detailed questions pertaining to the information contained in this document, you may contact Michco, or the manufacturer which provided the original information in this electronic deliverable. Michco's only part in this electronic deliverable was the electronic assembly process.

You may contact Michco through the following methods:
Phone (517) 484-9312 or (800) 331-3339 MI, OH, IN only
2011 N. High St. -- Lansing, Michigan -- 48906
Fax: (517) 484-9836
Email: CustServ@Michco.com
Web site: www.Michco.Com
Parts Web site: www.FloorMachineParts.Com

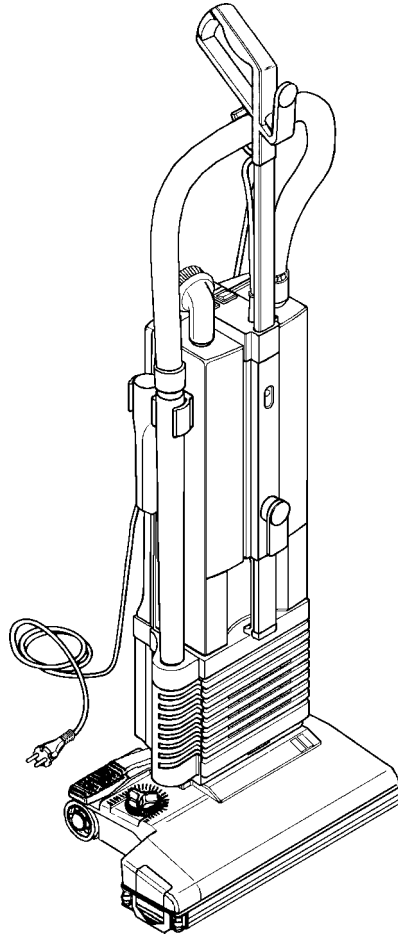
Order Parts on Line at:
www.FloorMachineParts.Com

Directly to Parts & Service:
By Email: **Shop@Michco.com**
By Fax: (517) 702-2041
By Voice: Use numbers above.

Serving the Cleaning Industry Since 1922

Notice: All copyrighted material remains property of original owners, all trademarks are property of respective owners. Manuals are subject to Manufacturer's reproduction limitations. Originals or reproductions were provided by manufacturers through a request. We make no warranty as to the correctness of information provided in this document and you assume all risk.

GU 350 / GU 450



PARTS LIST

Nilfisk MODELS 56704070, 56704071

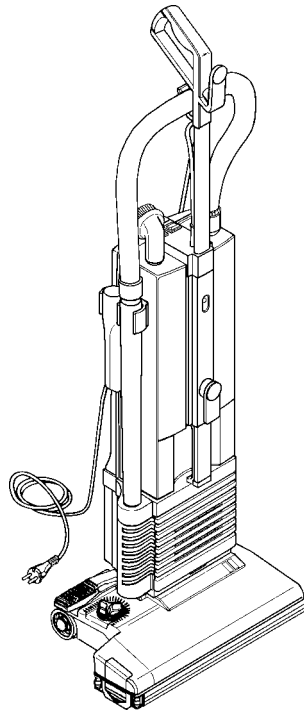
56704072, 56704073, 56704117, 56704118



**Nilfisk
Advance**

setting standards

6/95 revised 8/01 FORM NO. 56042389
BOOK B-SECTION 2.6.1

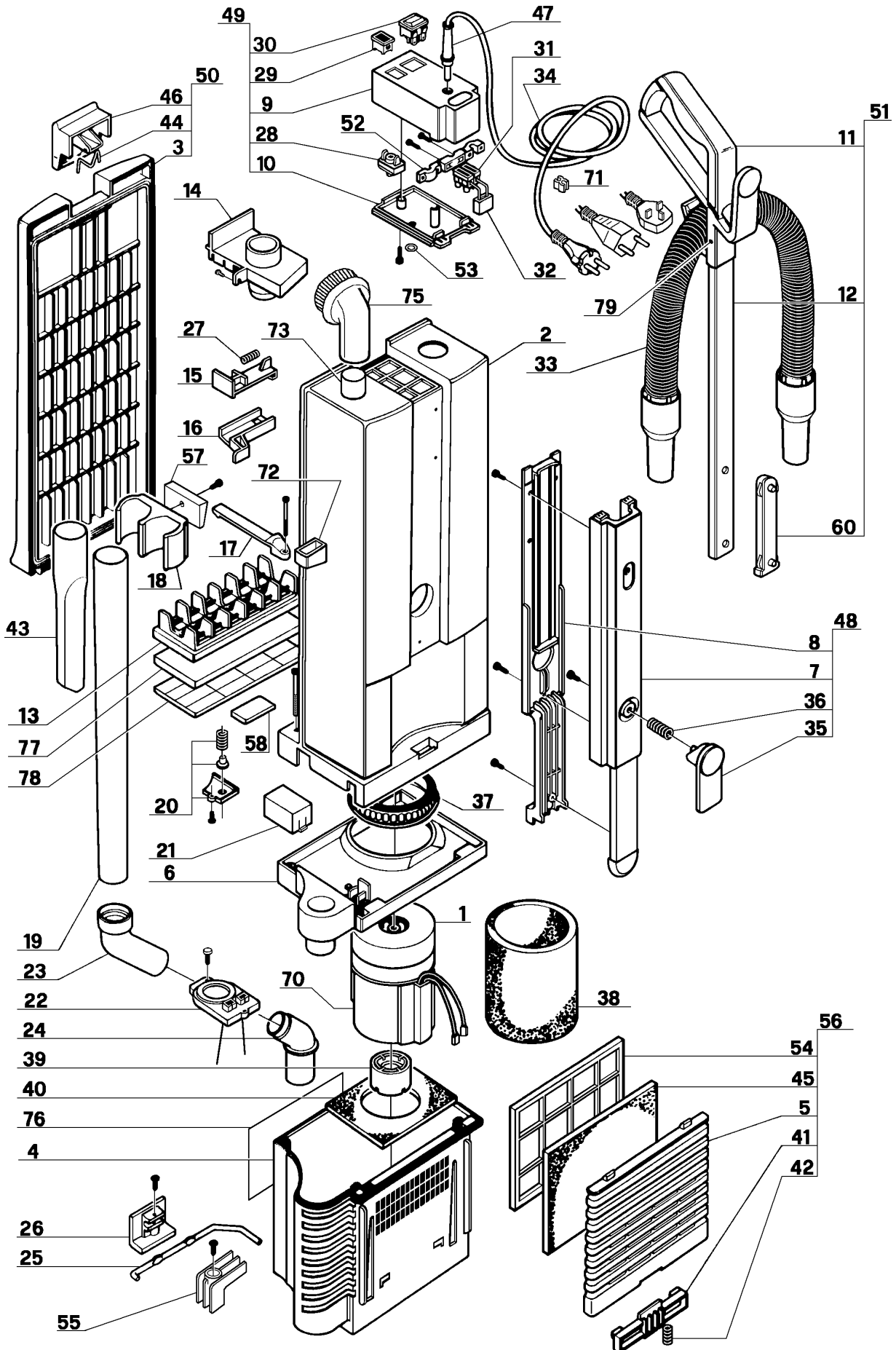
**DESCRIPTION****PLAN**

BAG HOUSING	B-2.6.1-5
BRUSH HOUSING - GU 350	B-2.6.1-7
BRUSH HOUSING - GU 450	B-2.6.1-9
WIRING DIAGRAM	B-2.6.1-11

WHEN ORDERING PARTS

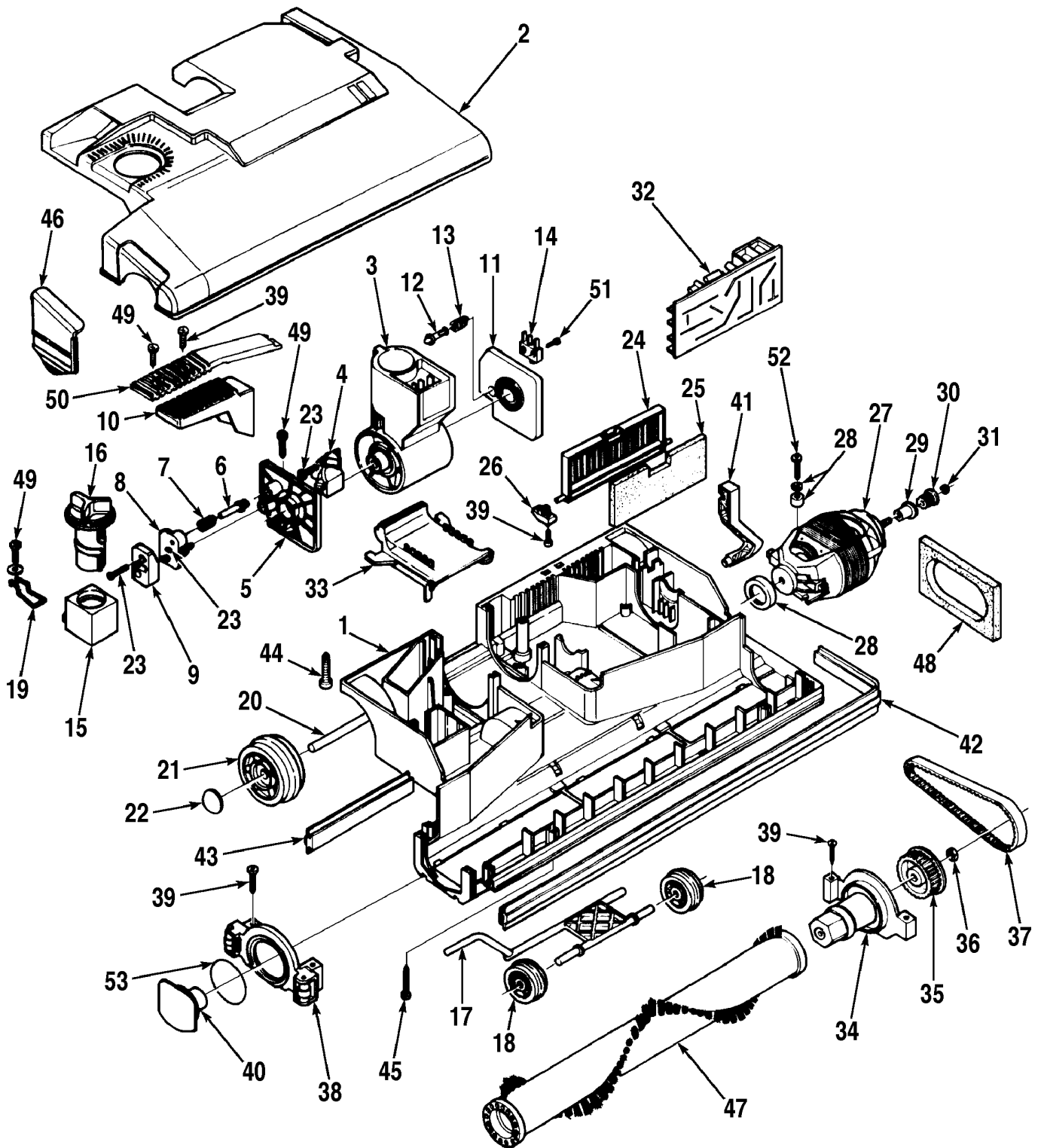
- * Use the 8 digit numbers from the "Ref. No." columns in this parts list.
- * Specify the model and serial number of the machine.
- * Use the space below to record the model and serial number for future reference.

Model _____ Serial No. _____



95-6	BAG HOUSING	BOOK B		
01-8	GU 350 / GU 450	B	2.6.1	5

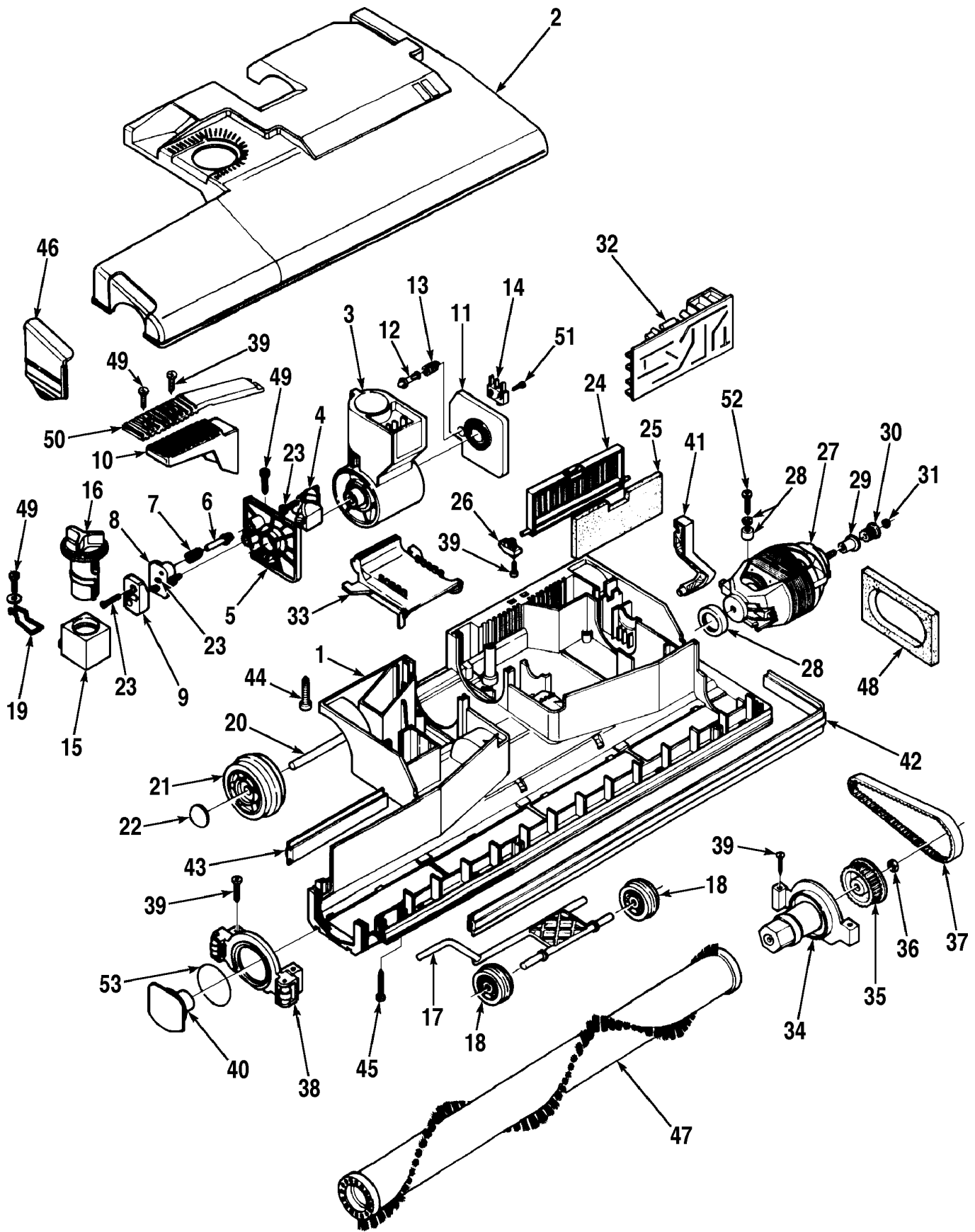
Item	Ref. No.	Qty	Description	Item	Ref. No.	Qty	Description
	56704122	1	Bag Housing Assy (models 56704117, 56704118)	41	56704100	1	Grill Housing Button
	56704084	1	Bag Housing Assy (models 56704070, 56704071)	42	56703949	1	Grill Housing Spring
	56704085	1	Bag Housing Assy (models 56704072, 56704073)	43	56703725	1	Crevice Tool
	56704169	1	Vacuum Motor Note 1	44	56703950	1	Spring
1	56704173	1	Vacuum Motor Kit Note 1	45	56703951	1	Electrostat Exhaust Filter (pkg of 5)
2	56704083	1	Bag Housing	46	56704081	1	Bag Housing Cover Button
3	56704080	1	Bag Housing Cover with Gasket	47	56703662	1	Strain Relief
4	56703918	1	Outer Vacuum Motor Housing	48	56704089	1	Electrical System Assembly (#7,8,35,36)
5	56703919	1	Exhaust Filter Cover	49	56704079	1	Frame Switch Housing with Cable (#9,10,28,29,30)
6	56703920	1	Inner Vacuum Motor Housing	50	56704082	1	Complete Cover (#3,44,46)
7	56704086	1	Frame, Handle Assembly	51	56704076	1	Handle Tube Assembly (#11,12,60)
8	56704087	1	Handle Cover	52	56703977	1	Cord Clamp
9	56704158	1	Switch Housing Dark Gray	53	56703978	1	O-Ring
10	56704078	1	Switch Housing Cover	54	56703967	1	Exhaust Grill
11	56704074	1	Handle	55	56703966	1	Joint Pin
12	56704126	1	Chromate Tube with Buttons	56	56704101	1	Complete Grill (#5,41,42,45,54)
13	56703927	1	Grill, Filter Holder	57	56703968	1	Slide
14	56703928	1	Bag Entrance	58	56703714	1	Scented Pad (pkg of 10)
15	56703929	1	Bag Holder Button	60	56704075	1	Handle Button Assembly
16	56703930	1	Button Guide	70	56703993	1	Vacuum Motor Shell
17	56703931	1	Safety Grill Clip	71	56703990	1	Cord Clip
18	56703932	1	Double Wand Clip	72	56703991	1	Crevice Tool Support
19	56703771	1	Extension Tube	73	56703992	1	Dusting Brush Support
20	56703933	1	Relief Valve	75	56703785	1	Round Dusting Brush
21	56703934	1	Contacts Protection	76	56017042	1	Warning Decal
22	56703858	1	Curve Contacts Support w/2 wires	77	56703969	1	Filter, Vacuum Inlet
23	56703936	1	Upper Curve	78	56703914	1	Intake Grill
24	56703937	1	Lower Curve	79	56009128	1	Screw, M3.5-1.3 x 13mm
25	56703938	1	Blocking Joint Pin	**	56704116	1	Paper Filter Bag (pkg of 5 plus 1 Electrostat Exhaust Filter)
26	56704090	1	Control Pin Slide	**	56703909	1	Cloth Bag
*	56704046	1	Screw, 3.9 x 13 mm	**	56706189	1	Bag Clip for Cloth Bag
27	56703940	1	Bag Holder Button Spring	**	56703774	1	Upholstery Tool
28	56704161	1	Vacuum Sensor Kit Note 2	**	56703771	1	Wand Extension 48cm long
29	56703941	1	Indicator Light	**	56703772	1	Bent Wand with Suction Control
30	56703708	1	Main Switch	**	56703913	1	Cloth Filter Bag with Bag Clip
31	56703783	1	Terminal Block	** = Optional Accessory, not shown			
32	56703784	1	RFI Filter				
33	56704216	1	Semi-Flex Hose with Sleeves				
	56703855	2	Sleeve				
34	56704123	1	Power Cord (Swiss Plug)	Note 1: Vacuum Motor Kits include one of each (items 1, 38 and 39).			
	56703974	1	Power Cord (Schuko Plug)	Note 2: Vacuum Sensor Kits include one of each (vacuum sensor 56704159,			
	56703982	1	Power Cord (British Plug)	vacuum sensor adapter 56704160, and dark gray switch housing 56704158.			
35	56704088	1	Cable Clip				
36	56703943	1	Spring				
37	56703944	1	Gasket				
38	56703945	1	Sound Reduction Foam				
39	56704170	1	Gasket				
40	56703947	1	Lower Motor Filter				



95-6	BRUSH HOUSING - GU 350	BOOK B		
01-8	GU 350 / GU 450	B	2.6.1	7

Item	Ref. No.	Qty	Description	Item	Ref. No.	Qty	Description
	56704102	1	Brush Housing Assy	27	56703657	1	Brush Motor
1	56704104	1	Body Main Brush Head	*	56704137	2	Carbon Brush for 56703657
*	56704133	1	Base Assy (#1, 15, 17-22, 28, 49)	28	56704038	1	Brush Motor Support Kit
2	56704103	1	Electric Brush Cover	29	56704130	1	Pulley Spacer
3	56704064	1	Joint Complete w/pin slide (#4)	30	56704129	1	Brush Motor Pulley
			TSB 675	31	56703853	1	Brush Motor Nut
*	56704131	1	Prong Set w/3 cables	32	56704026	1	Circuit Board
4	56704016	1	Joint Pin Slide	33	56704112	1	Felt Support w/one felt seal
5	56704017	1	Support Right Joint w/felt seal				TSB 675
6	56704018	2	Plunger	34	56704044	1	Transmission Support
7	56703766	2	Spring, Handle Release Pedal	35	56703747	1	Brush Pulley
8	56704019	1	Double Pin Washer	36	56703746	1	Brush Pulley Nut
9	56704111	1	Double Release Plate	37	56704039	1	Belt
10	56704107	1	Handle Release Pedal	38	56704047	1	Wheels Support
11	56704022	1	Support Left Joint w/felt seal	39	56704041	2	Screw, 3.9 x 16
12	56704023	1	Switch Activator Pin	40	56704049	1	Roller Support
13	56704024	1	Spring	41	56704050	1	Side Lever
14	56703738	1	Brush Motor Switch	42	56704051	1	Front Bumper Gasket
15	56704110	1	Brush Adjuster	43	56704053	1	Back Bumper Gasket
16	56704109	1	Brush Adjuster Knob	44	56704055	5	Screw, 4.8 x 50
17	56704028	1	Front Axle	45	56704056	2	Screw, 3.5 x 38
18	56704029	2	Front Wheel Note 1	46	56704105	1	Side Cover
19	56704030	1	Spring, Brush Adjust	47	56704058	1	Brush Roller
20	56704031	1	Rear Axle	48	56704060	1	Brush Motor Filter
21	56704032	2	Rear Wheel	49	56704046	1	Screw, 3.9 x 13
22	56704033	2	Wheel Retainer	50	56704108	1	Lever
23	56704065	4	Screw, 2.9 x 16	51	56704045	1	Screw, 2.2 x 16
24	56704106	1	Filter Grill	52	56704219	2	Screw, 3.5 x 25
25	56704035	1	Brush Motor Filter	53	56704135	1	O-Ring
26	56704124	1	Stop Grill Plate				

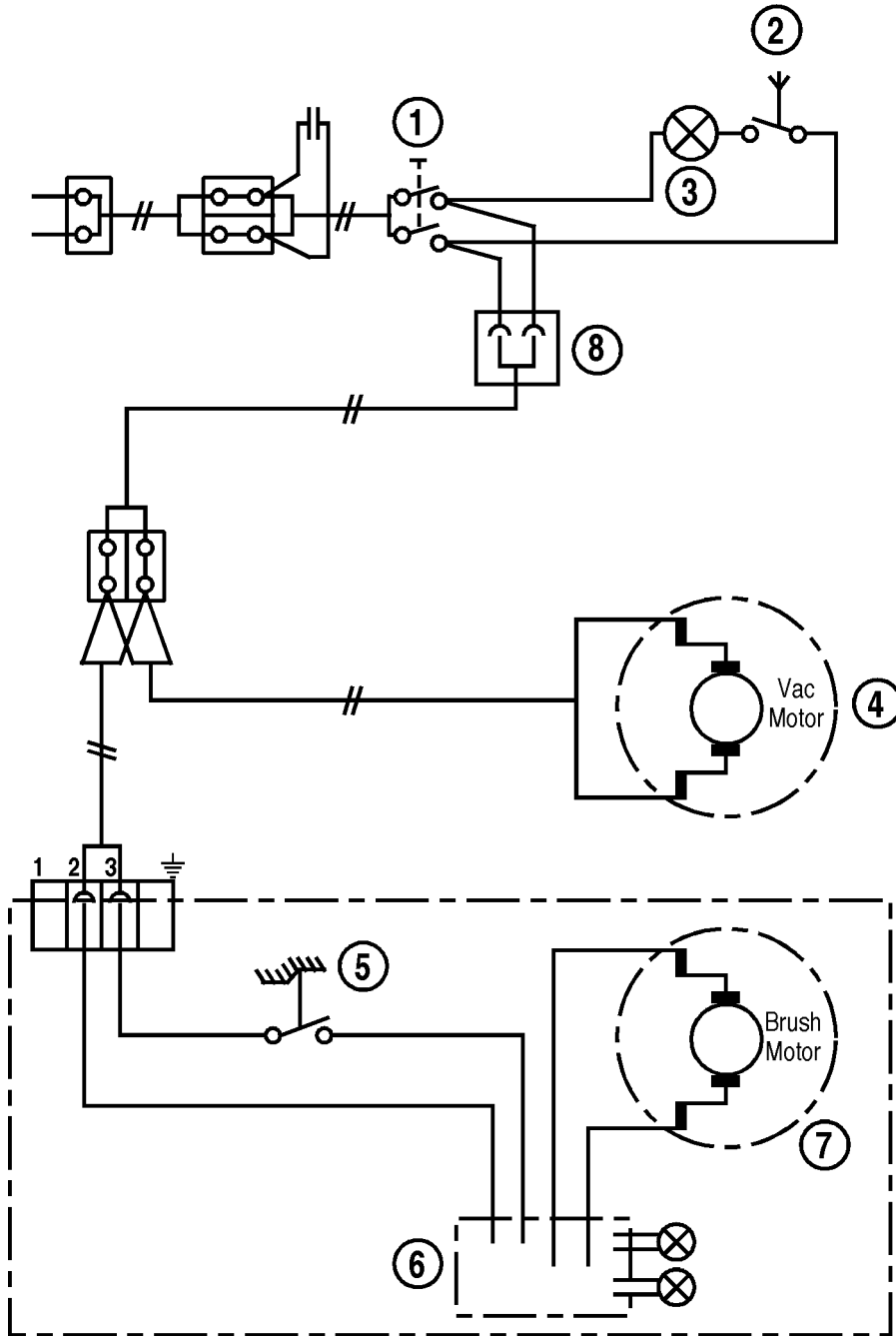
Note 1: Front plastic wheel with a rubber thread (56704029) has been replaced with an all-plastic wheel (56703757) which allows easier machine movement on carpet, but 56704029 is still available.



95-6	BRUSH HOUSING - GU 450	BOOK B		
01-8	GU 350 / GU 450	B	2.6.1	9

Item	Ref. No.	Qty	Description	Item	Ref. No.	Qty	Description
	56704113	1	Brush Housing Assy	27	56704025	1	Brush Motor
1	56704115	1	Body Main Brush Head	*	56704137	2	Carbon Brush for 56704025
*	56704134	1	Base Assy (#1, 15, 17-22, 28, 49)	28	56704038	1	Brush Motor Support Kit
2	56704114	1	Electric Brush Cover	29	56704130	1	Pulley Spacer
3	56704064	1	Joint Complete w/pin slide (#4)	30	56704129	1	Brush Motor Pulley
			TSB 675	31	56703853	1	Brush Motor Nut
*	56704131	1	Prong Set w/3 cables	32	56704026	1	Circuit Board
4	56704016	1	Joint Pin Slide	33	56704112	1	Felt Support w/one felt seal
5	56704017	1	Support Right Joint w/felt seal				TSB 675
6	56704018	2	Plunger	34	56704044	1	Transmission Support
7	56703766	2	Spring, Handle Release Pedal	35	56703747	1	Brush Pulley
8	56704019	1	Double Pin Washer	36	56703746	1	Brush Pulley Nut
9	56704111	1	Double Release Plate	37	56704039	1	Belt
10	56704107	1	Handle Release Pedal	38	56704047	1	Wheels Support
11	56704022	1	Support Left Joint w/felt seal	39	56704041	2	Screw, 3.9 x 16
12	56704023	1	Switch Activator Pin	40	56704049	1	Roller Support
13	56704024	1	Spring	41	56704050	1	Side Lever
14	56703738	1	Brush Motor Switch	42	56704052	1	Front Bumper Gasket
15	56704110	1	Brush Adjuster	43	56704054	1	Back Bumper Gasket
16	56704109	1	Brush Adjuster Knob	44	56704055	6	Screw, 4.8 x 50
17	56704028	1	Front Axle	45	56704056	3	Screw, 3.5 x 38
18	56704029	2	Front Wheel Note 1	46	56704105	1	Side Cover
19	56704030	1	Spring, Brush Adjust	47	56704059	1	Brush Roller
20	56704031	1	Rear Axle	48	56704060	1	Brush Motor Filter
21	56704032	2	Rear Wheel	49	56704046	1	Screw, 3.9 x 13
22	56704033	2	Wheel Retainer	50	56704108	1	Lever
23	56704065	4	Screw, 2.9 x 16	51	56704045	1	Screw, 2.2 x 16
24	56704106	1	Filter Grill	52	56704219	2	Screw, 3.5 x 25
25	56704035	1	Brush Motor Filter	53	56704135	1	O-Ring
26	56704124	1	Stop Grill Plate				

Note 1: Front plastic wheel with a rubber thread (56704029) has been replaced with an all-plastic wheel (56703757) which allows easier machine movement on carpet, but 56704029 is still available.



95-6	WIRING DIAGRAM	BOOK B		
01-8	GU 350 / GU 450	B	2.6.1	11

Item	Ref. No.	Qty	Description
1	56703708	1	Main Switch
2	56704161	1	Vacuum Sensor Kit
3	56703941	1	Indicator Light
4	56703971	1	Vacuum Motor
5	56703738	1	Brush Motor Switch
6	56704026	1	Circuit Board
7	56703657	1	Brush Motor
8	56703784	1	RFI Filter

DANMARK

Nilfisk-Advance Nordic A/S
 Myntevej 3, 8900 Randers
 ☎ 86 42 84 33 – Fax 86 41 19 55

NORGE

Nilfisk-Advance AS
 Enebakkn, 119, 0680 Oslo, Postboks 196, Manglerud,
 0612 Oslo
 ☎ 22 08 63 50 – Fax 22 08 63 63
 Distriktsrepresentanter over hele landet

SVERIGE

Nilfisk-Advance AB
 Sjöbjörnsvägen 5, 117 67 Stockholm
 ☎ 085 55 944 00 – Fax 085 55 944 30

FINLAND/ SUOMI

BERNER Ltd. Facotek Department
 Etäleranta 4B, 00130 Helsinki
 ☎ +358 9 1345 1382

AUSTRALIA

Nilfisk-Advance Pty. Ltd.
 ACN 003 762 623
 Head office: 17 Leeds Street, Rhodes, N. S. W. 2138
 ☎ (02) 9736 1244 – Fax (02) 9736 3910
 Customer Responce Centre:
 ☎ 1 800 011 013

BELGIQUE / BELGIË/ LUXEMBOURG

Nilfisk-Advance s.a./n.v.
 Doornveld/ Sphere Business Park
 Industrie Asse 3, nr 11 – bus 41
 1731 Zellik-Asse
 ☎ (02) 467.60.50 Fax (02) 463.44.16

CANADA

Nilfisk-Advance Ltd.
 396 Watline Avenue
 Mississauga, Ontario L4Z 1X
 ☎ (905) 712-3260 – Fax (905) 712-3255

DEUTSCHLAND

Nilfisk-Advance AG
 Siemensstraße 25-27
 25462 Rellingen
 ☎ (041 01) 3990 – Fax (04101) 399191
 Zentraler Kundenservice
 ☎ für die Industrie: 0180 535 67 97
 ☎ Institutionen und Gebäudereiniger: 0180 500 11 70

FRANCE

Nilfisk-Advance S.A.
 BP 246
 91944 Courtaboeuf Cedex
 ☎ (01) 69.59.87.00 Télécopie (01) 69.59.87.01

HONG KONG

Nilfisk-Advance Ltd.
 2001, 20/F HK Worsted Mills
 Industrial Building
 31-39 Wo Tong Tsui Street
 Kwai Chung, N.T.
 ☎ 2427 59 51 – Fax 2487 5828

IRELAND

Nilfisk-Advance Ltd.
 28 Sandyford Office Park
 Dublin 18
 ☎ +353 1 2943838 – Fax +353 1 2943845

JAPAN

Nilfisk-Advance Inc.
 3-4-9 Chigasaki Minami
 Tsuzuki-Ku Yokohama 224
 ☎ 045-942-7741 – Fax 045-942-6545

MALAYSIA

Nilfisk-Advance Sdn Bhd
 Lot 2, 1st. Floor
 Lorong 19/1A
 46300 Petaling Jaya
 Selangor Darul Ehsan
 ☎ 03-7568188 / 03-7568189 / 03-7568388 – Fax 03-7566828

NEDERLAND

Nilfisk-Advance B.V.
 Flevolaan 7, Postbus 341
 1380 AH Weesp
 ☎ 0294-462121 – Fax 0294-430053

NEW ZEALAND

Nilfisk-Advance Limited
 477 Great South Road, Penrose
 Auckland
 ☎ (09) 525 0092 – Fax (09) 525 6440

SCHWEIZ / SUISSE

Nilfisk-Advance AG
 Ringstrasse 19, 9533 Kirchberg/Wil
 ☎ 719 23 52 83 – Fax 719 23 84 44

SINGAPORE

Nilfisk-Advance Pte. Ltd.
 10, Woodlands Loop
 Singapore 738388
 ☎ (65) 759 9100 – Fax (65) 759 9133

TAIWAN

Nilfisk-Advance Ltd.
 1 F, No.23, Lane 132, Sec. 2
 Ta An Road, Taipei
 ☎ 700 22 68 – Fax 784 08 43

UNITED KINGDOM

Nilfisk-Advance Limited
 Newmarket Road
 Bury St. Edmunds
 Suffolk IP 33 3SR
 ☎ (01284) 763163 – Fax (01284) 750562

USA

Nilfisk-Advance Inc.
 14600 21st Avenue North
 Plymouth, MN 55447-3408
 ☎ +1 800 989 2235 – Fax 1 800 989 6566

Nilfisk-Advance of America, Inc.

300 Technology Drive
 Malvern, PA 19355
 ☎ (610) 647 647-6427

ÖSTERREICH

Nilfisk-Advance GmbH
 Vorarlberg Allee 46
 1230 Wien
 ☎ 1 616 58 30 – Fax 1 616 58 30 40

ESPAÑA

Nilfisk-Advance, S.A.
 Torre D'Ara
 Passeig del Rengle, 5 Pl.9-10
 E-08302 – Mataró (Barcelona)
 ☎ Tel. 93 741 24 00 – Fax: 93 757 80 20
 Central atención al cliente: 902 200 201
nilfisk@nilfisk-advance.es – www.nilfisk-advance.com
 Distribuidores y Servicio Técnico en toda España y Andorra

ITALIA

Nilfisk-Advance Italia Spa
 Località Novella Terza
 26862 Guardamiglio (LO)
 Italy
 ☎ +39 0377 414067-54 – Fax +39 0377 414097
www.nilfisk-advance.com

PORTUGAL

Nilfisk-Advance Lda.
 Rua Cândido de Figueiredo, 91-i, 1500-133 LISBOA
 ☎ 01/7784142 – Fax 01/7785613
 Porto 02/526766 – Fax 02/520739
 Açores 096/628092/3 – Fax 096/628129
 Madeira 091/228965 – Fax 091/228796

GREECE

Embiom S.A.
 Λεωφ. Βουλιαγμένης 60
 Αργυρούπολη
 164 52 Αθήνα
 ☎ 9950613 - Fax 9951680

