



Electronic Service Manuals

This electronic document is provided as a service to our customers. We do not create the contents of the information contained in this document. Should you have detailed questions pertaining to the information contained in this document, you may contact Michco, or the manufacturer which provided the original information in this electronic deliverable. Michco's only part in this electronic deliverable was the electronic assembly process.

You may contact Michco through the following methods:
Phone (517) 484-9312 or (800) 331-3339 MI, OH, IN only
2011 N. High St. -- Lansing, Michigan -- 48906
Fax: (517) 484-9836
Email: CustServ@Michco.com
Web site: www.Michco.Com
Parts Web site: www.FloorMachineParts.Com

Order Parts on Line at:
www.FloorMachineParts.Com

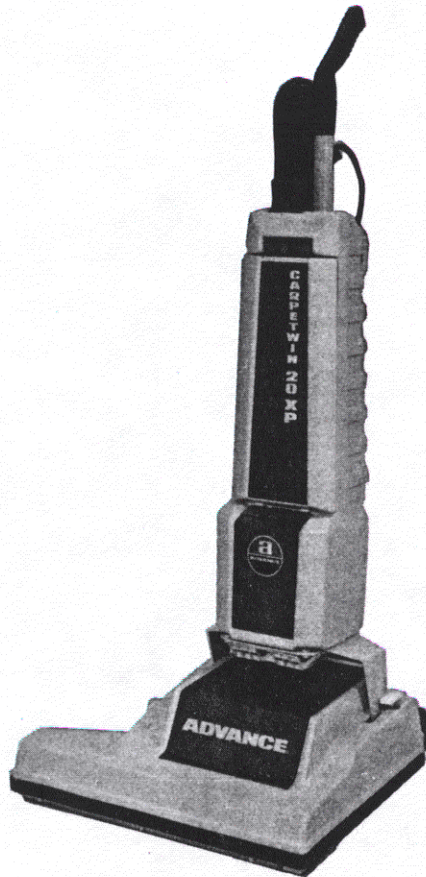
Directly to Parts & Service:
By Email: **Shop@Michco.com**
By Fax: (517) 702-2041
By Voice: Use numbers above.

Serving the Cleaning Industry Since 1922

Notice: All copyrighted material remains property of original owners, all trademarks are property of respective owners. Manuals are subject to Manufacturer's reproduction limitations. Originals or reproductions were provided by manufacturers through a request. We make no warranty as to the correctness of information provided in this document and you assume all risk.

Carpetwin 20XP
Models 323302, 323315
THIS PARTS LIST IS FOR MACHINES
AFTER SERIAL NUMBER 445585

PARTS LIST



ADVANCE
MACHINE COMPANY

INTERNATIONAL HEADQUARTERS, Plymouth, MN 55447-3408
EUROPE, Llantrisant, Pontyclun, Mid-Glamorgan CF7 8YZ Wales, United Kingdom
CANADA, 1295 Crestlawn Drive, Mississauga, Ontario L4W 1A9



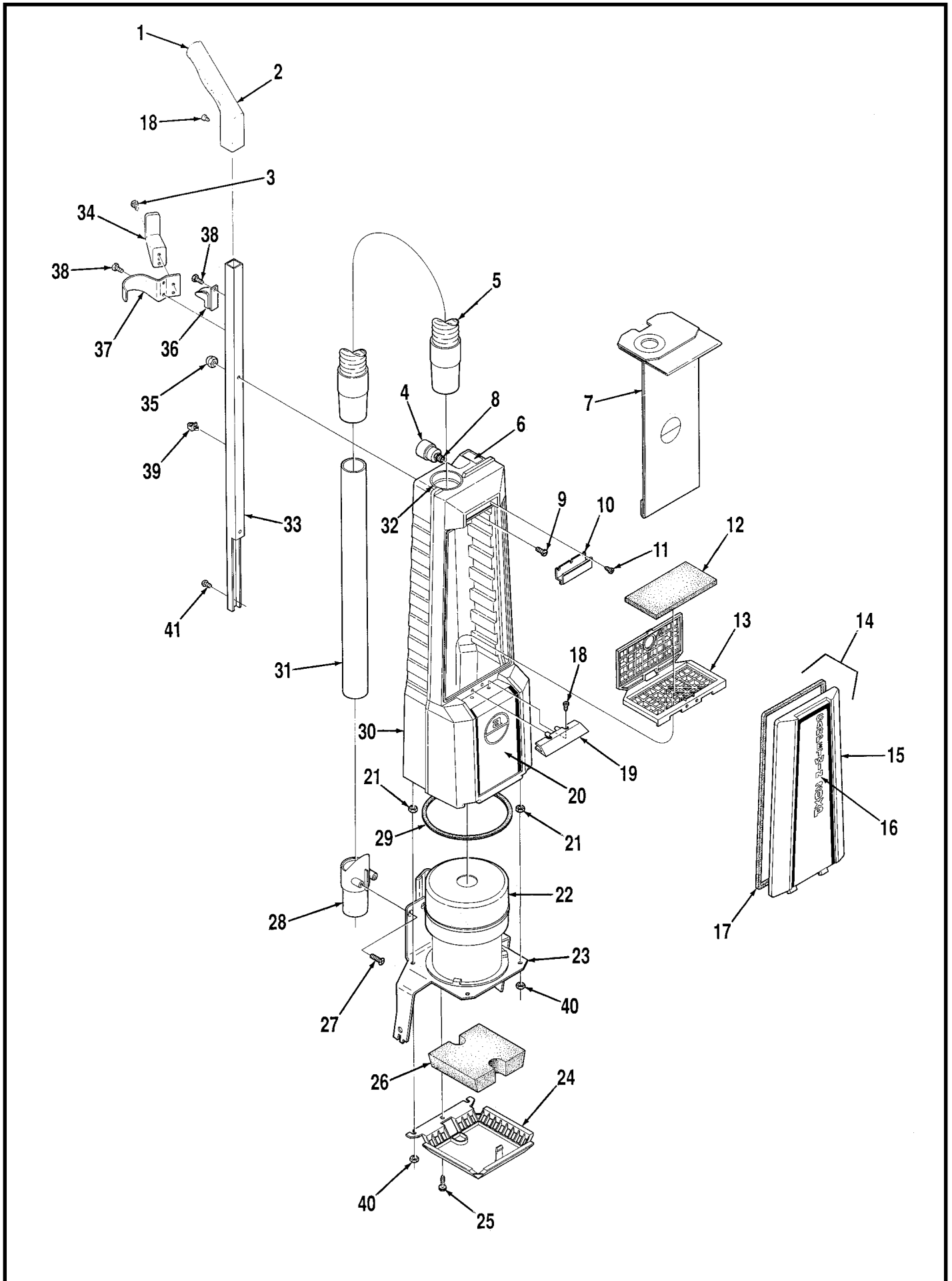
TABLE OF CONTENTS

<u>DESCRIPTION</u>	<u>PAGE</u>
Upper Housing	1-2
Vacuum Motor Assembly	3-4
Base Assembly	5-6
Wiring Diagrams	7-8

WHEN ORDERING PARTS

- * Use the 6 digit numbers from the "Part No." columns in this parts list.
- * Specify the model and serial number of the machine.
- * Use the space below to record the model and serial number for future reference.

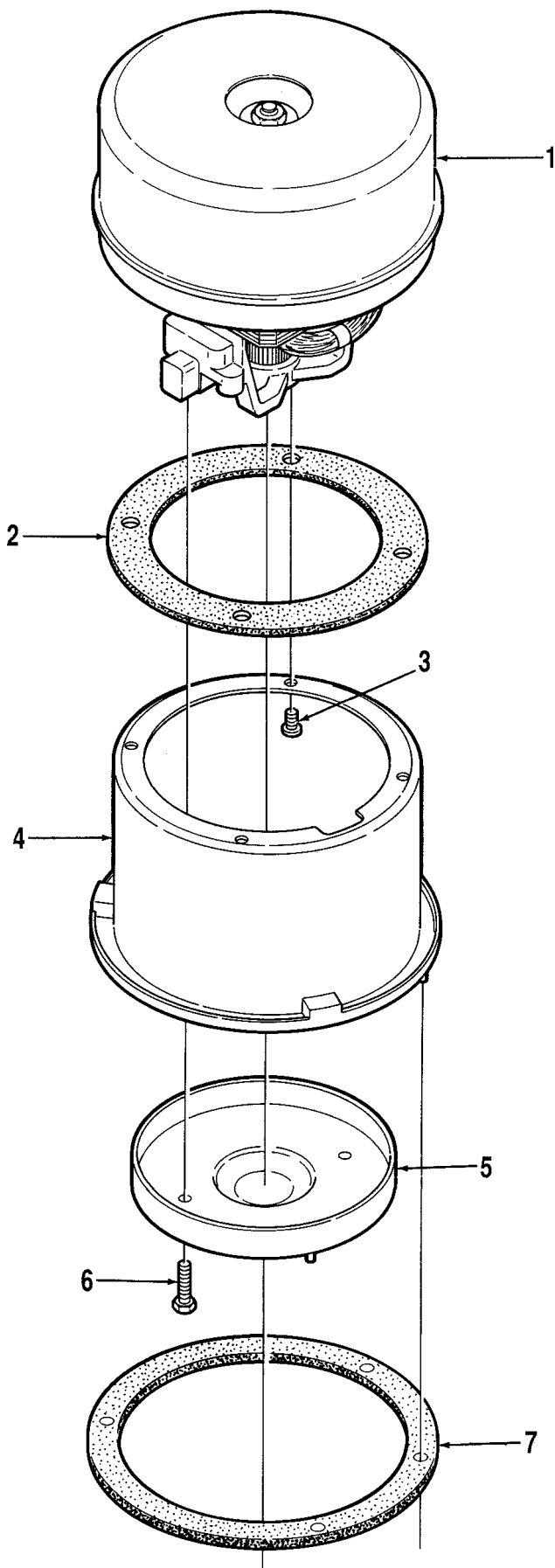
Model _____ Serial No. _____



UPPER HOUSING

Item	Part No.	Qty	Description
	323223	1	Upper Housing Assembly (#1-21, 30-41)
1	706224	1	Plug
2	706220	1	Handle Grip
3		2	#10-24 x 1/4 Screw
4	323170	1	Indicator
5	323167	1	Vacuum Hose
6	015069	1	Decal, Full Bag
7	323153	1	Paper Filter Bag (pkg of 6)
*	323195	1	Cloth Bag
*	320676	1	Clip for Cloth Bag
*	323251	1	Bio-Bag™ (pkg of 6) (optional accessory, not included)
8	750746	1	Nipple
9		2	1/4-20 x 1-1/4 Screw
10	323143	1	Latch TSB 561, G-10
11	900484	3	Screw
12	323158	1	Internal Filter
13	323161	1	Internal Filter Housing
14	323204	1	Cover Assembly (#15-17) TSB 562, G-9
15	323151	1	Cover
16	014991	1	Decal, Carpetwin 20XP
17	323165	1	Gasket
18		3	#10-24 x 1/2 Screw
*		2	#10-24 Whiz Nut
19	323146	1	Stop
20	014945	1	Decal, Housing
21		4	5/16-18 Nut
*		4	5/16-18 x 1 Bolt
*		4	5/16 Washer
*	323013	4	Washer
22			SEE PAGE 3
23	323189	1	20" Yoke
24	323160	1	Exhaust Filter Retainer
25		3	#10-24 x 3/4 Screw
26	323275	1	Exhaust Filter
27	900287	2	Screw
28	323148	1	Wand Holder
29	323157	1	Yoke Gasket
30	323139	1	Housing TSB 697, G-8
31	323141	1	Wand
32	323142	1	Bag Fill Tube
33	100029	1	Handle Tube
34	323074	1	Cord Hook
35		2	1/4-20 Acorn Nut
36	706287	1	Clip
37	323171	1	Hose Bracket
38		3	#10-24 x 3/8 Screw
39	323179	2	Clip
40		4	5/16-18 Jam Nut
41		1	1/4-20 x 5/16 Screw

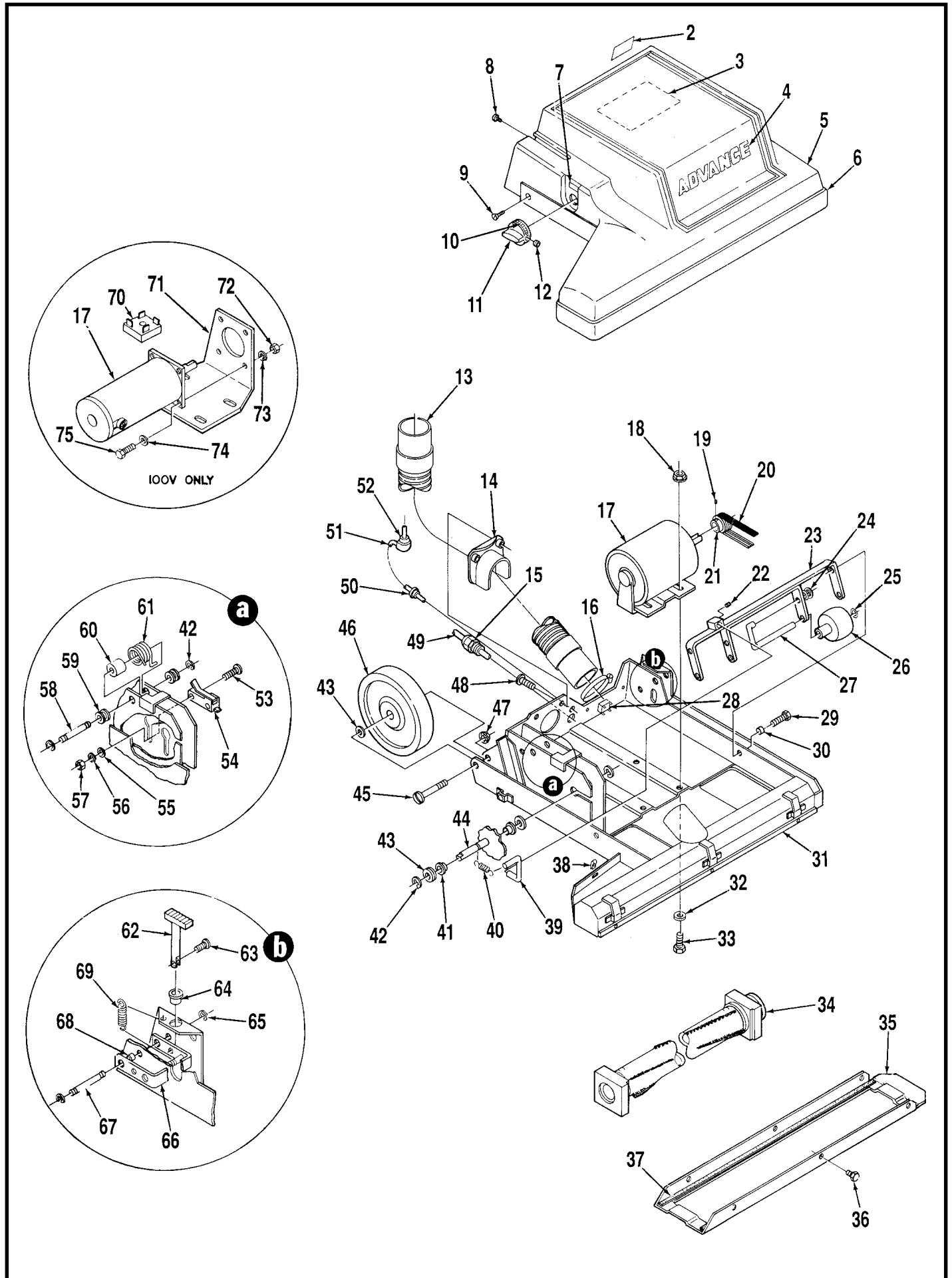
* = Not Shown



VACUUM MOTOR ASSEMBLY

Item	Part No.	Qty	Description
1	323177	1	Vacuum Motor 100V, 120V
*	203518	1	Carbon Brush Set for 323177
2	209325	1	Motor Gasket
3		4	#10-24 x 3/8 Screw
4	323173	1	Vacuum Motor Cup
5	323044	1	Inner Baffle
6		2	#10-24 x 7/8 Screw
7	323164	1	Cup Gasket
*	250150	1	Ground Wire

* = Not Shown

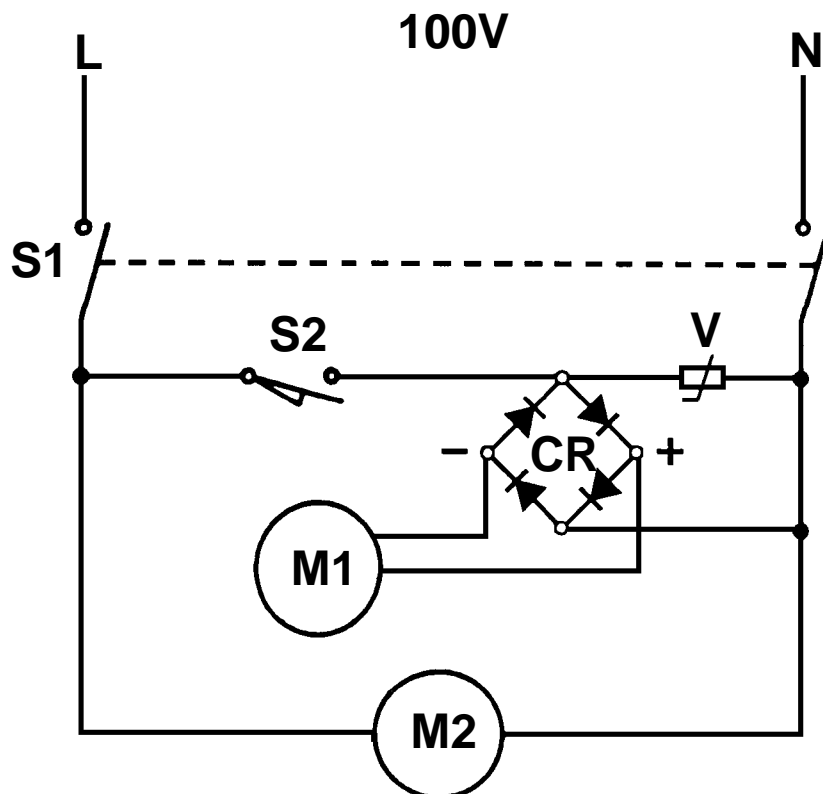
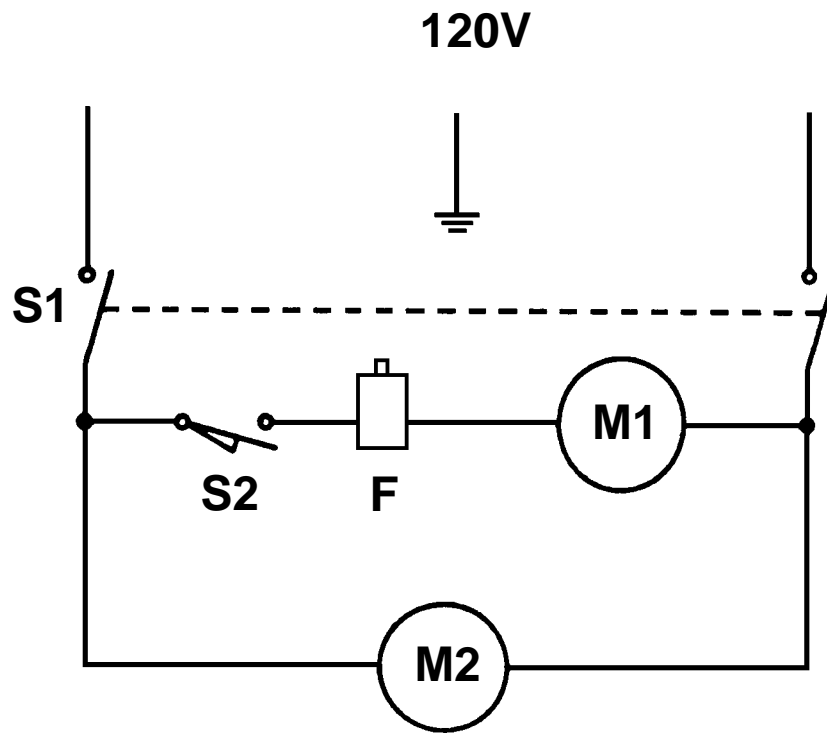


BASE ASSEMBLY

Item	Part No.	Qty	Description	Item	Part No.	Qty	Description
1	323224	1	Shroud Assembly 120V (#2-7)	41	329105	2	Bearing
	323229	1	Shroud Assembly 100V (#2-7)	42	321427	6	Retaining Ring
2	014369	1	Decal, Warning	43		5	3/8 Washer
3	015980	1	Decal, Wiring 120V	44	328058	1	Cam
	015099	1	Decal, Wiring 100V	45		2	3/8-16 x 1-3/4 Bolt
4	015073	1	Decal, Advance	46	327530	2	Wheel
5	323323	1	Shroud	47		2	3/8-16 Whiz Nut
6	326992	1	Bumper	48	900238	2	Screw
7	023290	1	Decal, Brush Adjustment	49	323212	1	Power Cord 120V
8		3	#8-32 x 3/8 Screw		323225	1	Power Cord 100V
9	384929	4	Screw	50	163015	1	Strain Relief
10	023288	1	Decal, Knob Adjustment	51	100057	1	Cord 100V, 120V
11	324502	1	Knob	52	185504	1	Strain Relief
12		1	#8-32 x 3/8 Set Screw	53		2	#4-40 x 1 Screw
13	323203	1	Hose	54	327450	1	Switch
14	323176	1	Baffle	55		2	#4 Washer
15	323135	1	Strain Relief	56		2	#4 Lock Washer
16	440213	1	Hose Clamp	57		2	#4-40 Nut
17	238160	1	Brush Motor 120V	58	329054	2	Pin
	228428	1	Brush Motor 100V	59	329098	4	Bushing
*	228434	1	Carbon Brush Set for 228428	60	323130	1	Bushing
18		4	5/16-18 Whiz Nut	61	323129	1	Torsion Spring
19		1	1/4-20 x 1/4 Set Screw	62	328562	1	Pedal
20	327478	1	Belt	63		1	#6-32 x 1/2 Screw
21	327131	1	Sheave	64	328723	1	Bushing
22		1	5/16-18 x 1/4 Set Screw	65	321125	2	Retaining Ring
23	327607	1	Axle Bracket	66	328561	1	Latch
24	325227	2	Nut	67	328707	1	Pin
25	150150	4	Spring Washer	68	328758	1	Bushing
26	323086	2	Wheel	69	328790	1	Spring
27	327668	2	Axle Roller	70	180163	1	Rectifier 40A
28	323741	1	Power Switch	71	326522	1	Motor Mount Bracket
29		2	1/4-20 x 1 Screw	72		4	1/4-20 Nut
30	151106	2	Bushing	73		4	1/4 Lock Washer
31	323198	1	Base	74		4	1/4 Flat Washer
32		4	5/16 Washer	75		4	1/4-20 x 1/2 Screw
33		4	5/16-18 x 1 Bolt	*	329177	1	Circuit Breaker, 6A
34	327272	1	Brush Assembly				
**	327182	1	Pulley				
**	322420	2	Bearing Block				
**	372773	2	Bearing				
**	327255	1	Brush				
**	327166	1	Tube				
**	320153	1	Loading Spring				
35	326934	1	Shoe				
36		6	#10-24 x 3/8 Screw				
37	330745	4'	Gasket (122 cm)				
38	328855	4	Spring Nut				
39	327657	1	Axle Lever				
40	330642	1	Spring				

* = Not Shown

** = Included in Brush Assembly 327272



120V WIRING DIAGRAM

Item	Part No.	Qty	Description
S1	323741	1	Main Switch
S2	327450	1	Brush Motor Switch
F	329177	1	Circuit Breaker, 6A
M1	238160	1	Brush Motor 120V
M2	323177	1	Vacuum Motor

100V WIRING DIAGRAM

Item	Part No.	Qty	Description
S1	323741	1	Main Switch
S2	327450	1	Brush Motor Switch
M1	228428	1	Brush Motor 100V
M2	323177	1	Vacuum Motor
CR	180163	1	Rectifier
V	387554	1	Varistor Assembly