



Electronic Service Manuals

This electronic document is provided as a service to our customers. We do not create the contents of the information contained in this document. Should you have detailed questions pertaining to the information contained in this document, you may contact Michco, or the manufacturer which provided the original information in this electronic deliverable. Michco's only part in this electronic deliverable was the electronic assembly process.

You may contact Michco through the following methods:
Phone (517) 484-9312 or (800) 331-3339 MI, OH, IN only
2011 N. High St. -- Lansing, Michigan -- 48906
Fax: (517) 484-9836
Email: CustServ@Michco.com
Web site: www.Michco.Com
Parts Web site: www.FloorMachineParts.Com

Order Parts on Line at:
www.FloorMachineParts.Com

Directly to Parts & Service:
By Email: **Shop@Michco.com**
By Fax: (517) 702-2041
By Voice: Use numbers above.

Serving the Cleaning Industry Since 1922

Notice: All copyrighted material remains property of original owners, all trademarks are property of respective owners. Manuals are subject to Manufacturer's reproduction limitations. Originals or reproductions were provided by manufacturers through a request. We make no warranty as to the correctness of information provided in this document and you assume all risk.

Carpetron™ 18



PARTS LIST

**Advance MODELS 56245300(115V), 56245301(100V)
56245305(230V)**

**This parts list is for machines after serial number 0420630
All models covered in this manual are OBSOLETE**



**Nilfisk
Advance**

setting standards

8/93 revised 3/01 FORM NO. 56042228

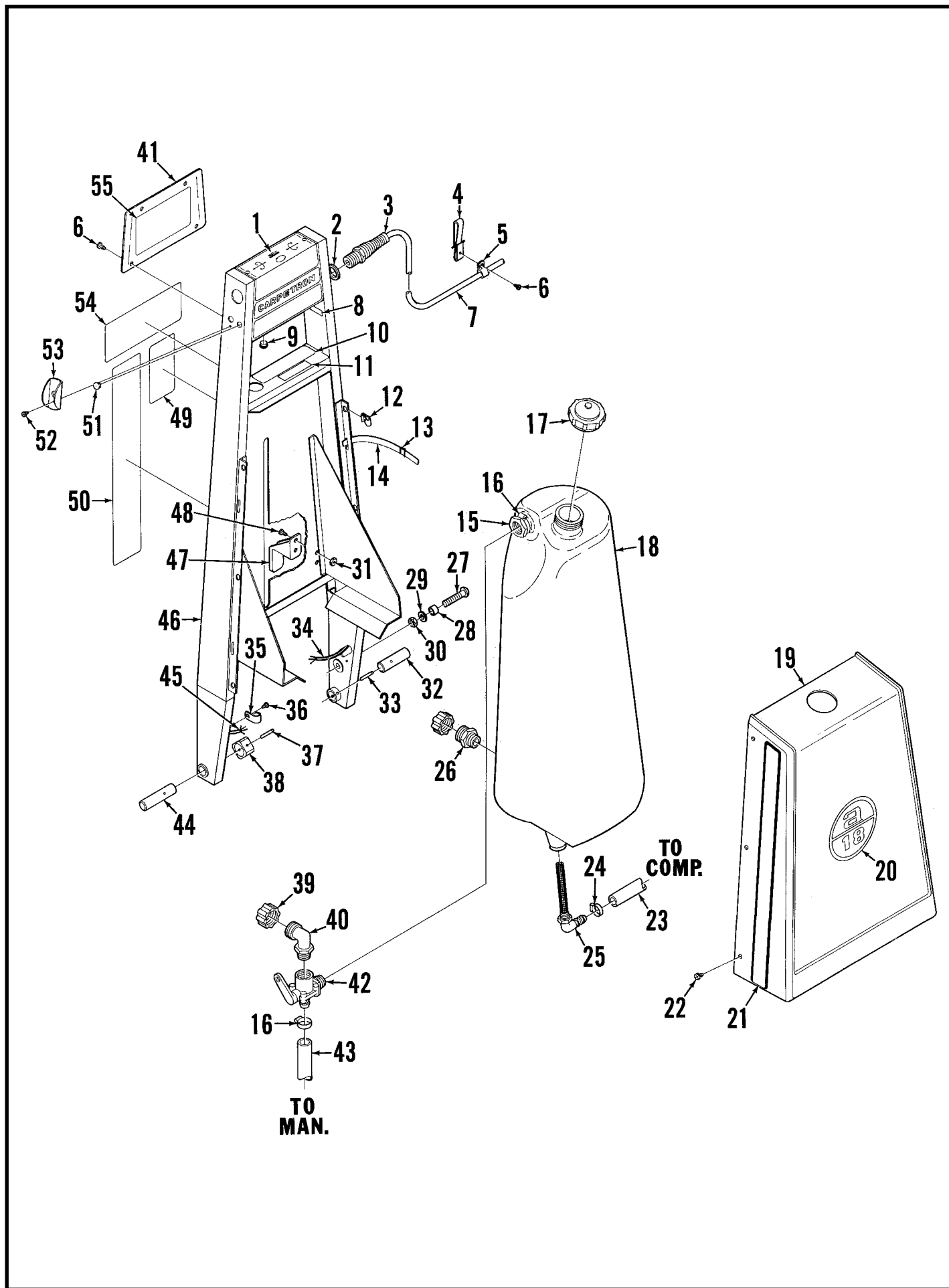
TABLE OF CONTENTS

<u>DESCRIPTION</u>	<u>PAGE</u>
Handle Assembly	1-2
Rear View Of Handle Assembly	3-4
Base Assembly	5-6
Brush And Adjustment Linkage	7-8
Compressor	9-10
Wiring Diagrams	11-12

WHEN ORDERING PARTS

- * Use the 8 digit numbers from the "Part No." columns in this parts list.
- * Specify the model and serial number of the machine.
- * Use the space below to record the model and serial number for future reference.

Model _____ Serial No. _____

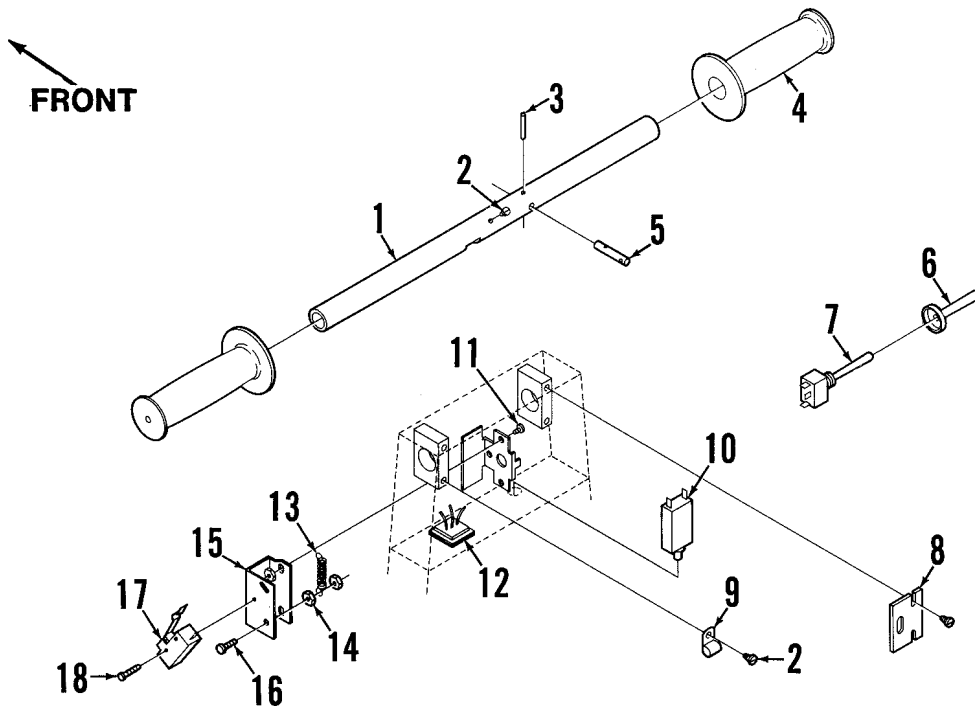


HANDLE ASSEMBLY

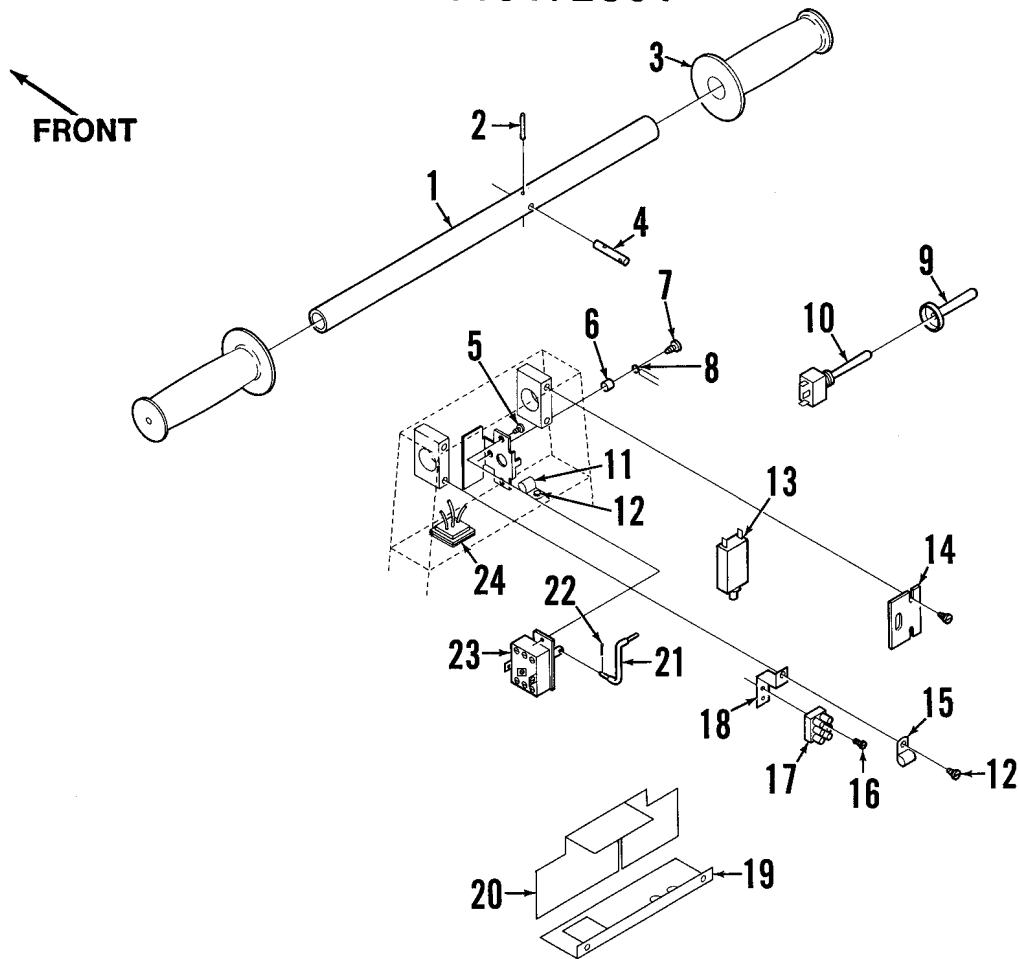
Item	Part No.	Qty	Description	Item	Part No.	Qty	Description
	56245336	1	Handle Assy 100V	34	56244826	1	Cord Set 100V / 115V
	56245313	1	Handle Assy 115V		56244829	1	Cord Set 230V
	56245314	1	Handle Assy 230V	35	56300152	2	Clamp 100V / 115V
1	56014312	1	Decal, Handle 100V		56442011	2	Clamp 230V
	56014308	1	Decal, Handle 115V / 230V	36		2	8-32 x .25 Screw
2	56200433	1	Washer 100V / 115V	37		1	.19 x 1.00 Pin
3	56162736	1	Strain Relief 100V / 115V	38	56244834	1	Cam
	56200441	1	Nut 100V / 115V	39	56255076	2	Cap
	56323046	1	Strain Relief 230V		56368776	2	Rubber Washer
4	56300187	1	Belt Clip	40	56245072	1	Elbow
5	56300152	1	Clamp	41	56245321	1	Cover
6		5	6-32 x .38 Screw	42	56245078	1	Valve
	56322504	5	Nut	43	56245018	1	Tube
7	56245028	1	Cord Set 100V (#4-6)	44	56244873	1	Pin
	56244830	1	Cord Set 115V (#4-6)	45	56245456	1	Cord Set 100V
	56244835	1	Cord Set 230V (#4-6)		56245042	1	Cord Set 115V
8	56015064	1	Decal, Instr. 100V / 115V		56245043	1	Cord Set 230V
9	56153648	1	Button Plug 115V	46	56245323	1	Handle
10	56015123	1	Decal, Instr. 100V / 115V	47	56323074	1	Cord Hook
11	56015121	1	Decal, Instr. 100V / 115V	48		2	10-24 x .25 Screw
12	56255874	6	Nut	49	56014828	1	Decal, Warning 100V / 115V
13	56245013	2	Buckle		56014204	1	Decal, Warning 230V
14	56245041	8'	Strap (2,440 mm)	50	56015285	1	Decal, Gauge
15	56244976	1	Tube	51	56493149	1	Button Plug 100V / 115V
16	56244969	3	Hose Clamp		56153648	1	Button Plug 230V
17	56244866	1	Cap	52		1	6-32 x .50 Screw
18	56244851	1	Tank	53	56200352	1	Switch Guard 230V
19	56245322	1	Shroud	54	56015263	1	Decal, Valve 100V / 115V
20	56014309	1	Decal, 18	55	56015282	1	Decal, Wiring 100V
21	56014342	1	Decal, Right Stripe		56014560	1	Decal, Wiring 115V
	56014343	1	Decal, Left Stripe		56014590	1	Decal, Wiring 230V
22		6	8-32 x .38 Screw				
23	56244967	1	Hose	*	56220426	1	Funnel
24	56219932	3	Hose Clamp	*	56218881	1	Brush
25	56244987	1	Bubbler				
26	56244980	1	Adapter				
27		1	Scr, 5/16-18 x 2.00				
28	56244941	1	Bushing				
29		1	5/16 Washer				
30		1	5/16-18 Nut				
31		2	10-24 Nut				
32	56244858	1	Pin				
33		1	.19 x .88 Pin				

* = Not Shown

100V



115V/230V



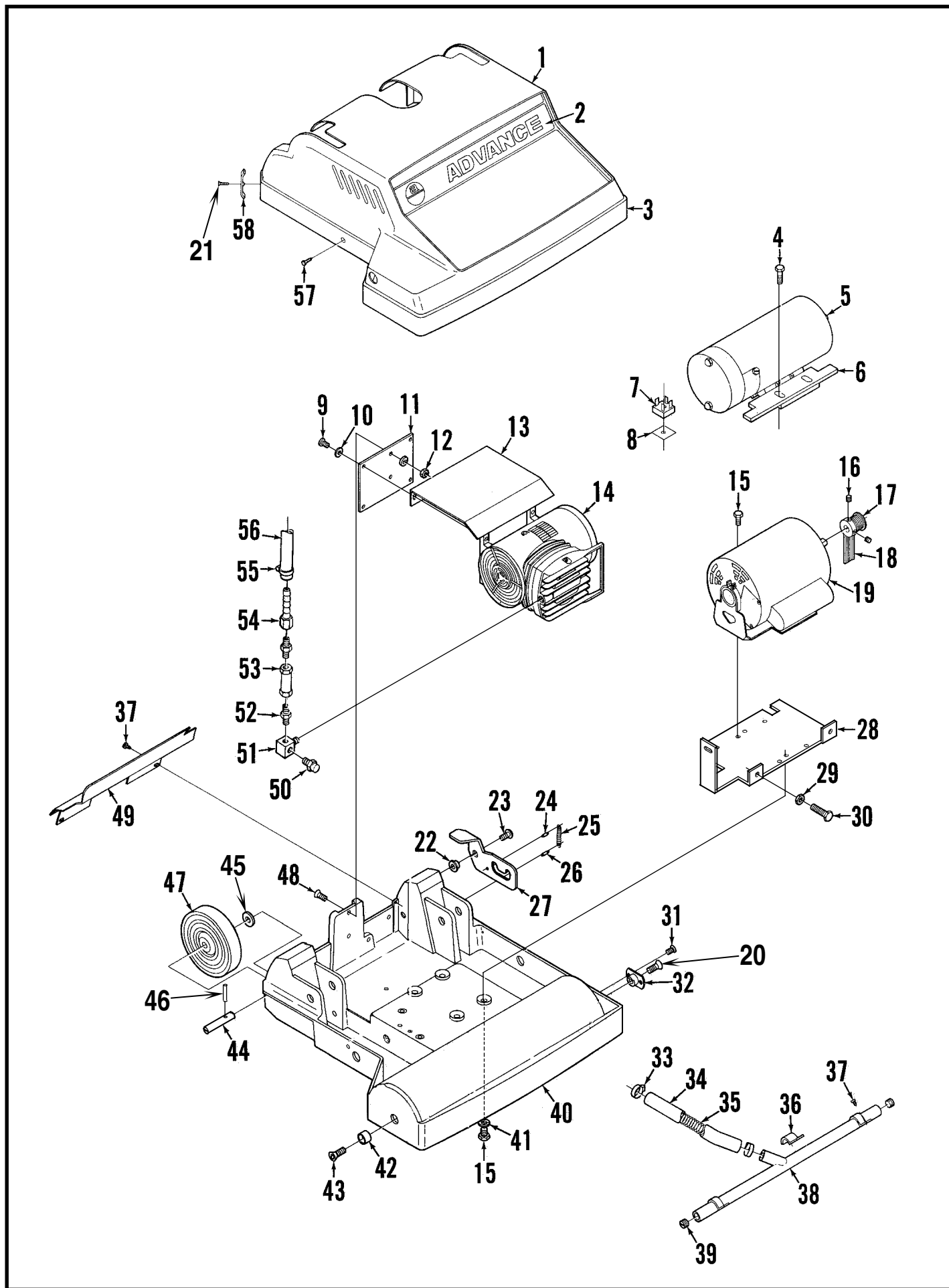
100V HANDLE - REAR VIEW

Item	Part No.	Qty	Description
1	56245528	1	Tube
2		4	8-32 x .38 Screw
3		1	.12 x 1.00 Pin
4	56388545	2	Grip
5	56245004	1	Pin
6	56219886	1	Sleeve
7	56217859	1	Switch
8	56245526	1	Plate
9	56342319	1	Clamp
10	56329177	1	6A Circuit Breaker
11		2	10-24 x .50 Screw
12	56245460	1	Receptacle
13	56445177	1	Spring
14		4	10-24 Nut
15	56245522	1	Bracket
16		1	10-24 x .75 Screw
17	56388019	1	Switch
18		2	6-32 x .88 Screw
*	56376015	1	Nut Plate

* = Not Shown

115V AND 230V HANDLE - REAR VIEW

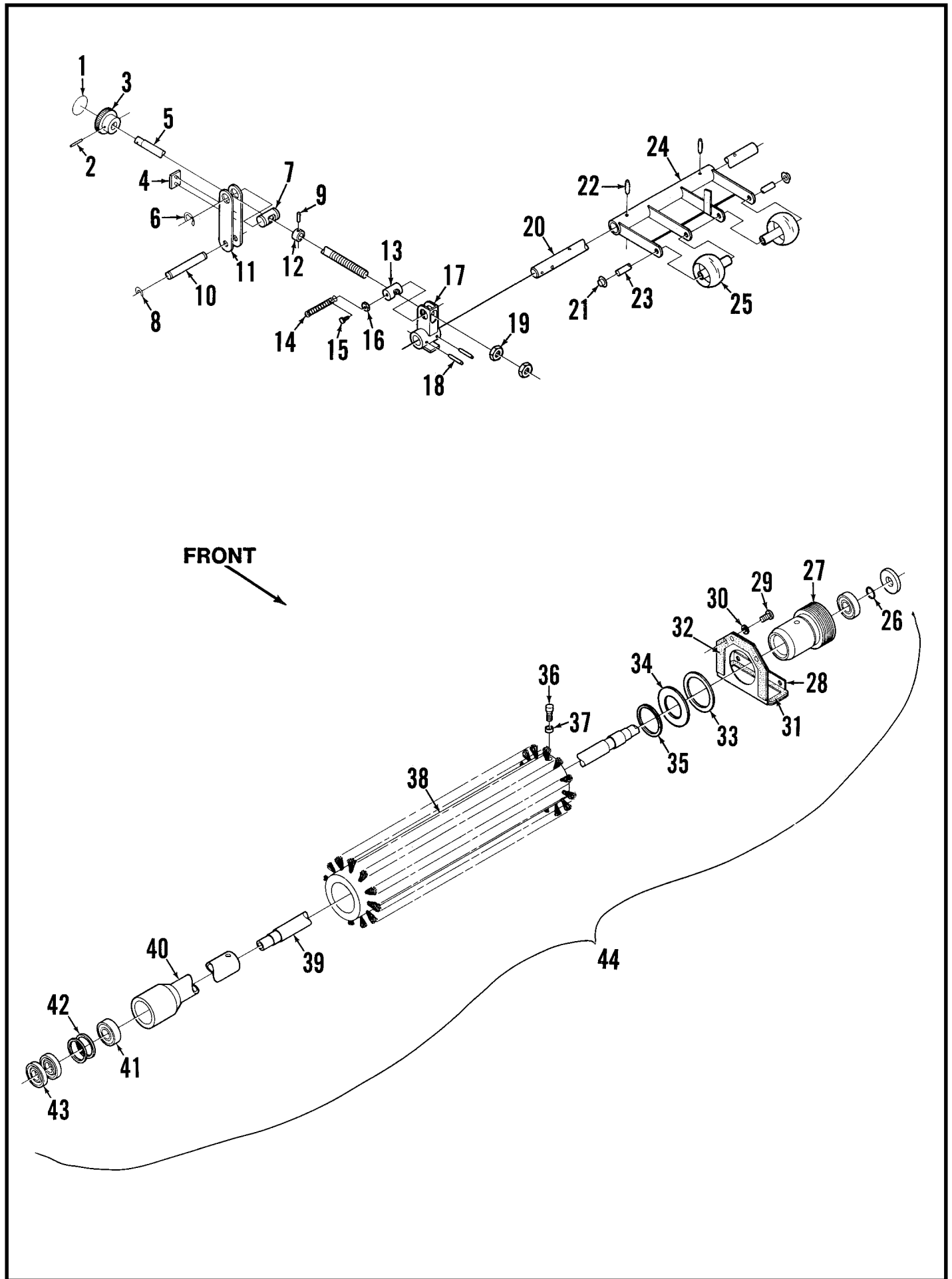
Item	Part No.	Qty	Description	Item	Part No.	Qty	Description
1	56245002	1	Tube	13	56387562	1	4A Circuit Breaker 230V
2		1	.12 x 1.00 Pin	14	56245000	1	Plate
3	56514085	2	Grip 115V	15	56342319	1	Clamp 115V
	56900248	2	Grip 230V		56300152	1	Clamp 230V
4	56245004	1	Pin	16		2	4-40 x .19 Screw 230V
5		2	6-32 x .38 Screw	17	56183523	1	Terminal Block 230V
6	56369004	1	Bushing	18	56245333	1	Bracket 230V
7		1	10-24 x .50 Screw	19	56244955	1	Insulator 230V
		1	10-24 Nut	20	56244952	1	Insulator 230V
8	56245060	1	Spring	21	56244996	1	Link
9	56219886	1	Sleeve 115V	22		2	.06 x .50 Cotter Pin
10	56217859	1	Switch 115V	23	56221155	1	Switch
	56468350	1	Switch 230V	24	56245063	1	Receptacle 115V (optional on 230V)
11	56442011	2	Clamp 230V				
12		4	8-32 x .38 Screw				
		1	8-32 Nut				



BASE ASSEMBLY

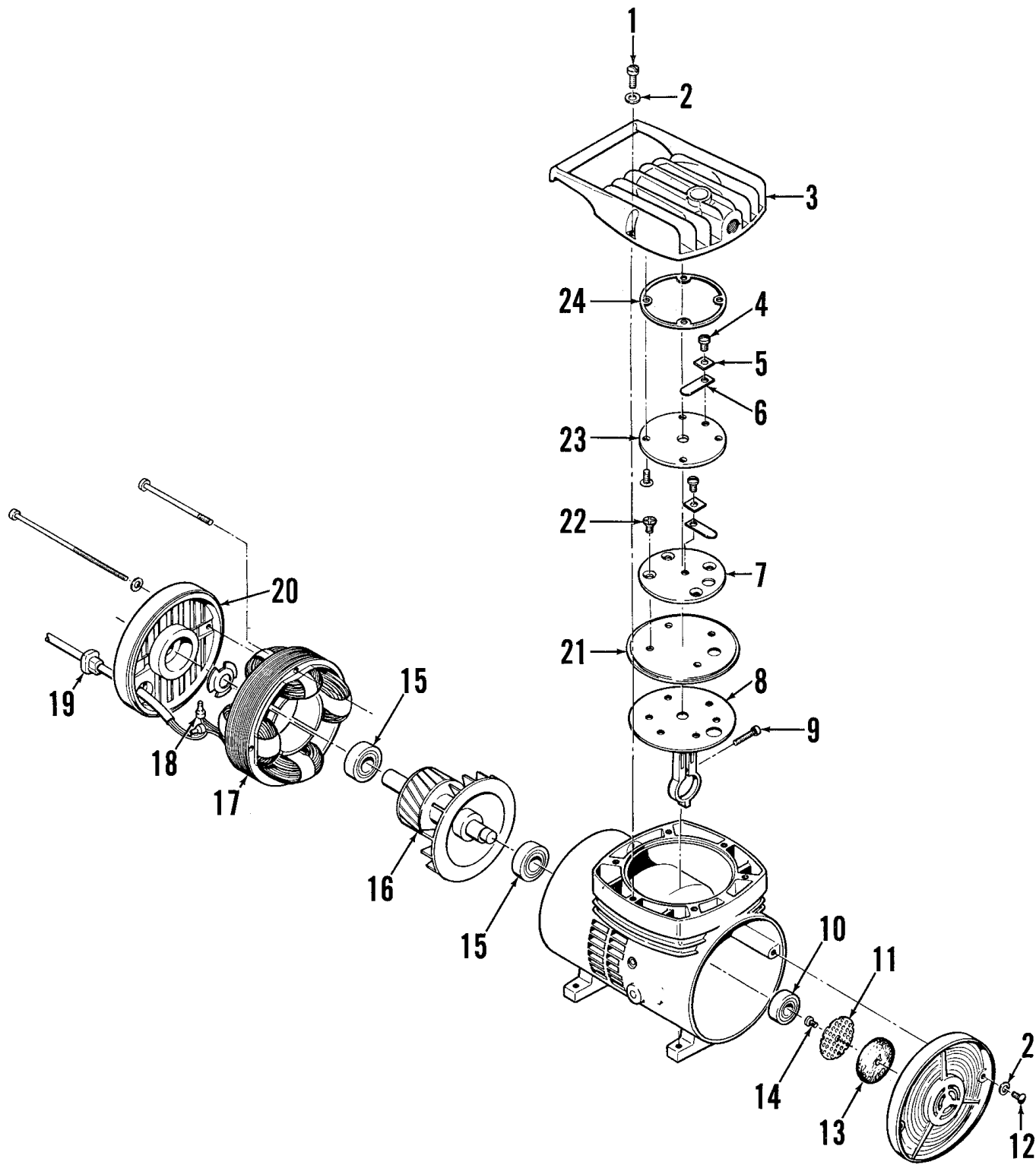
Item	Part No.	Qty	Description	Item	Part No.	Qty	Description
	56245309	1	Shroud Assembly	28	56245186	1	Plate
1	56245338	1	Shroud	29		2	3/8-16 Nut
2	56014307	1	Decal, Base	30		2	3/8-16 x 2-1/4 Bolt
3	56244956	1	Bumper	31	56009040	2	#10-24 x 3/8 Screw
4		4	5/16-18 x 7/8 Bolt 100V	32	56218111	1	Support
5	56245023	1	Motor 100V	33	56244969	2	Hose Clamp
6	56245019	1	Bar 100V	34	56245018	1	Tube
7	56180163	1	Rectifier 100V	35	56245010	1	Spring
*	56387554	1	Varistor 100V	36	56245076	1	Strap
8	56180164	1	Q-Pad 100V	37	56009012	8	#10-24 x .38 Screw
9		4	#10-24 x 1/2 Screw	38	56245068	1	Manifold
10		12	#10 Lock Washer		56220088	4'	Gasket (1220 mm)
11	56245306	1	Plate	39	56261421	2	Plug
12		2	#10-24 Nut	40	56245304	1	Base
13	56245312	1	Shield	41	56002220	4	5/16 Washer
14	56245480	1	Compressor 100V	42	56218146	1	Collar
	56245482	1	Comp Assy 100V (#14,50-56)	43		2	5/16-18 x 3/4 Bolt
	56217867	1	Compressor 115V	44	56219274	2	Axle (before SN1071908)
	56245082	1	Comp Assy 115V (#14,50-56)		56245347	2	Axle (after SN1071907)
	56219215	1	Compressor 230V	45	56001879	8	Washer
	56237647	1	Comp Assy 230V (#14,50-56)	46	56003220	2	Pin (after SN1071907)
15	56002923	8	5/16-18 x 1/2 Bolt	47	56392765	2	Wheel
16		2	5/16-18 x 3/8 Set Screw	48		2	#10-24 x 5/8 Screw
17	56245605	1	Sheave	49	56245306	1	Cover
18	56245608	1	Belt	50	56257990	1	Relief Valve
19	56217832	1	Motor 115V	51	56219798	1	Elbow
	56218529	1	Motor 230V	52	56218510	2	Check Valve
20	56002159	2	Scr, Flt Hd 5/16-18 x 1.00	53	56220526	1	Coupler
21		3	Scr, Flt Hd 10-24 x .50	54	56752754	1	Barb
22	56320595	1	Bushing	55	56219932	1	Hose Clamp
23	56002929	5	Scr, Hex Hd 5/16-18 x .62	56	56244935	1	Hose
24	56244939	1	Pin	57		3	#10-24 x 5/8 Screw
25	56321087	1	Spring	58	56244846	3	Clip
26	56151122	1	Pin				
27	56244936	1	Latch				

* = Not Shown



BRUSH AND ADJUSTMENT LINKAGE

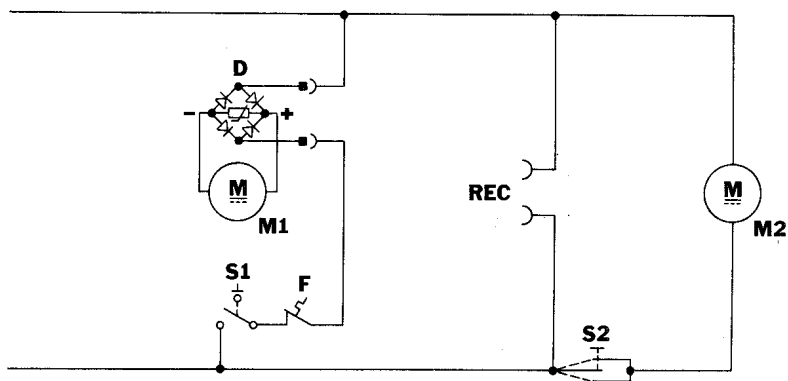
Item	Part No.	Qty	Description
	56245339	1	Control Assembly (#1-19)
1	56023092	1	Decal, Brush
2		1	1/8 x 1 Pin
3	56395061	1	Knob
4	56362069	1	Wear Plate
5	56244861	1	Screw
6	56478775	2	Retaining Ring
7	56245030	1	Swivel
8	56321427	2	Retaining Ring
9		1	1/8 x 5/8 Pin
10	56244865	1	Pin
11	56244854	1	Arm
12	56245022	1	Collar
13	56219169	1	Nut
14	56379301	1	Spring
15		1	#8-32 x 3/8 Screw
16		1	#8-32 Nut
17	56244869	1	Lever
18		2	3/16 x 1 Pin
19		2	7/16-14 Nut
20	56244896	1	Shaft
21	56290935	2	Cap
22		2	3/16 x 7/8 Pin
23	56244810	1	Pin
24	56244884	1	Bracket
25	56323086	2	Wheel
26	56217999	1	Retaining Ring
27	56245602	1	Sheave
28	56244898	1	Shield
29		4	#10-24 x 5/8 Screw
30		4	#10 Lock Washer
31	56244905	1	Gasket
32	56244903	1	Gasket
33	56220965	1	Washer
34	56217875	1	Seal
35	56218448	1	Retaining Ring
36	56218073	2	Screw
37	56368997	2	Bushing
38	56244928	1	Brush
39	56244926	1	Shaft
40	56244930	1	Sleeve
41	56372773	2	Bearing
42	56220108	2	Spacer
43	56218049	3	Seal
44	56244961	1	Brush Assembly (#26-43)



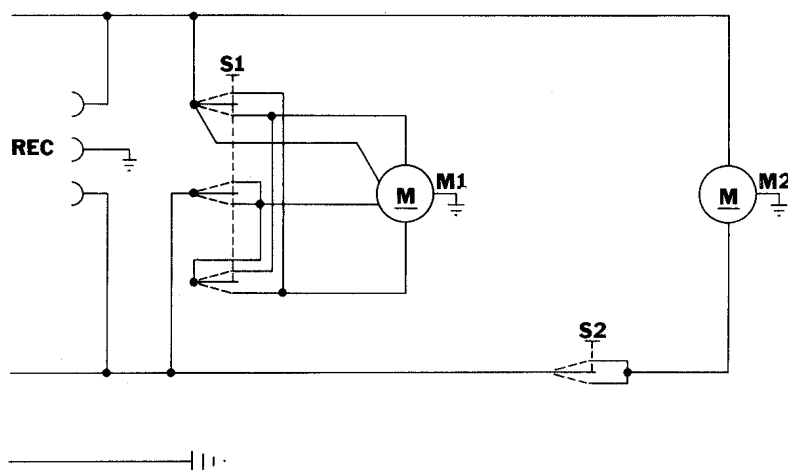
COMPRESSOR

Item	Part No.	Qty	Description
	56245480	1	Compressor 100V
	56217867	1	Compressor 115V / 60 cycle
	56219215	1	Compressor 230V / 50 cycle
1		6	#10-24 x 1/2 Screw
2		8	#10 washer
3	56220951	1	Head
4		2	#6-32 x 1/8 Screw
5	56220963	2	Valve Keeper
6	56220955	2	Flapper Valve
7	56220958	1	Intake Valve Plate
8	56220532	1	Connecting Rod
9		1	#10-24 x 3/4 Screw
10	56220528	1	Con Rod Bearing
11	56220516	1	Screen
12		2	#10-24 x 3/4 Screw
13	56220513	1	Filter
14		1	#8-32 x 7/32 Screw
15	56220529	2	Bearing
16	56220534	1	Shaft & Rotor Assy 115V, 230V
17	56220518	1	Stator 115V
	56220519	1	Stator 230V
18	56321737	2	Wire Nut
19	56163015	1	Strain Relief
20	56220535	1	End Cap
21	56220950	1	Diaphragm
22		8	#8-32 x 3/8 Screw
23	56220930	1	Exhaust Valve Plate
24	56220953	1	Gasket

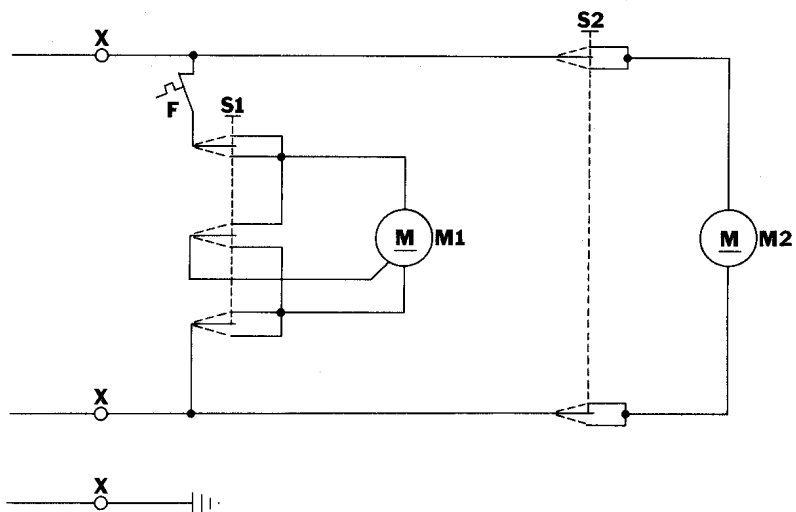
100V



115V



230V



WIRING DIAGRAM 100V

Item	Part No.	Qty	Description
------	----------	-----	-------------

S1	56388019	1	Switch
S2	56217859	1	Switch
F	56329177	1	Circuit Breaker 6A
M1	56245023	1	Brush Motor
M2	56245480	1	Compressor Motor
	56245460	1	Receptacle
	56180163	1	Rectifier
	56387554	1	Varistor

WIRING DIAGRAM 115V

Item	Part No.	Qty	Description
------	----------	-----	-------------

S1	56221155	1	Switch
S2	56217859	1	Switch
M1	56217832	1	Brush Motor
M2	56217867	1	Compressor Motor
	56245063	1	Receptacle

WIRING DIAGRAM 230V

Item	Part No.	Qty	Description
------	----------	-----	-------------

X	56183523	1	Terminal Block
S1	56221155	1	Switch
S2	56468350	1	Switch
F	56387562	1	Circuit Breaker 4A
M1	56218529	1	Brush Motor
M2	56219215	1	Compressor Motor



Nilfisk-Advance, Inc.
14600 21st Avenue North
Plymouth, MN, 55447-3408
www.nilfisk-advance.com
Phone: 800-989-2235
Fax: 800-989-6566
©2001 Nilfisk-Advance, Inc.,
Plymouth, MN 55447-3408
Printed in the U.S.A.