



## Electronic Service Manuals

This electronic document is provided as a service to our customers. We do not create the contents of the information contained in this document. Should you have detailed questions pertaining to the information contained in this document, you may contact Michco, or the manufacturer which provided the original information in this electronic deliverable. Michco's only part in this electronic deliverable was the electronic assembly process.

You may contact Michco through the following methods:  
Phone (517) 484-9312 or (800) 331-3339 MI, OH, IN only  
2011 N. High St. -- Lansing, Michigan -- 48906  
Fax: (517) 484-9836  
Email: [CustServ@Michco.com](mailto:CustServ@Michco.com)  
Web site: [www.Michco.Com](http://www.Michco.Com)  
Parts Web site: [www.FloorMachineParts.Com](http://www.FloorMachineParts.Com)

Order Parts on Line at:  
**[www.FloorMachineParts.Com](http://www.FloorMachineParts.Com)**

Directly to Parts & Service:  
By Email: **[Shop@Michco.com](mailto:Shop@Michco.com)**  
By Fax: (517) 702-2041  
By Voice: Use numbers above.

**Serving the Cleaning Industry Since 1922**

Notice: All copyrighted material remains property of original owners, all trademarks are property of respective owners. Manuals are subject to Manufacturer's reproduction limitations. Originals or reproductions were provided by manufacturers through a request. We make no warranty as to the correctness of information provided in this document and you assume all risk.

# PARTS LIST

---

**Advance**

**Carpetriever™ 28XP**

**Models 331303, 331300, 331305**

---

This parts list is for machines after serial number 434645



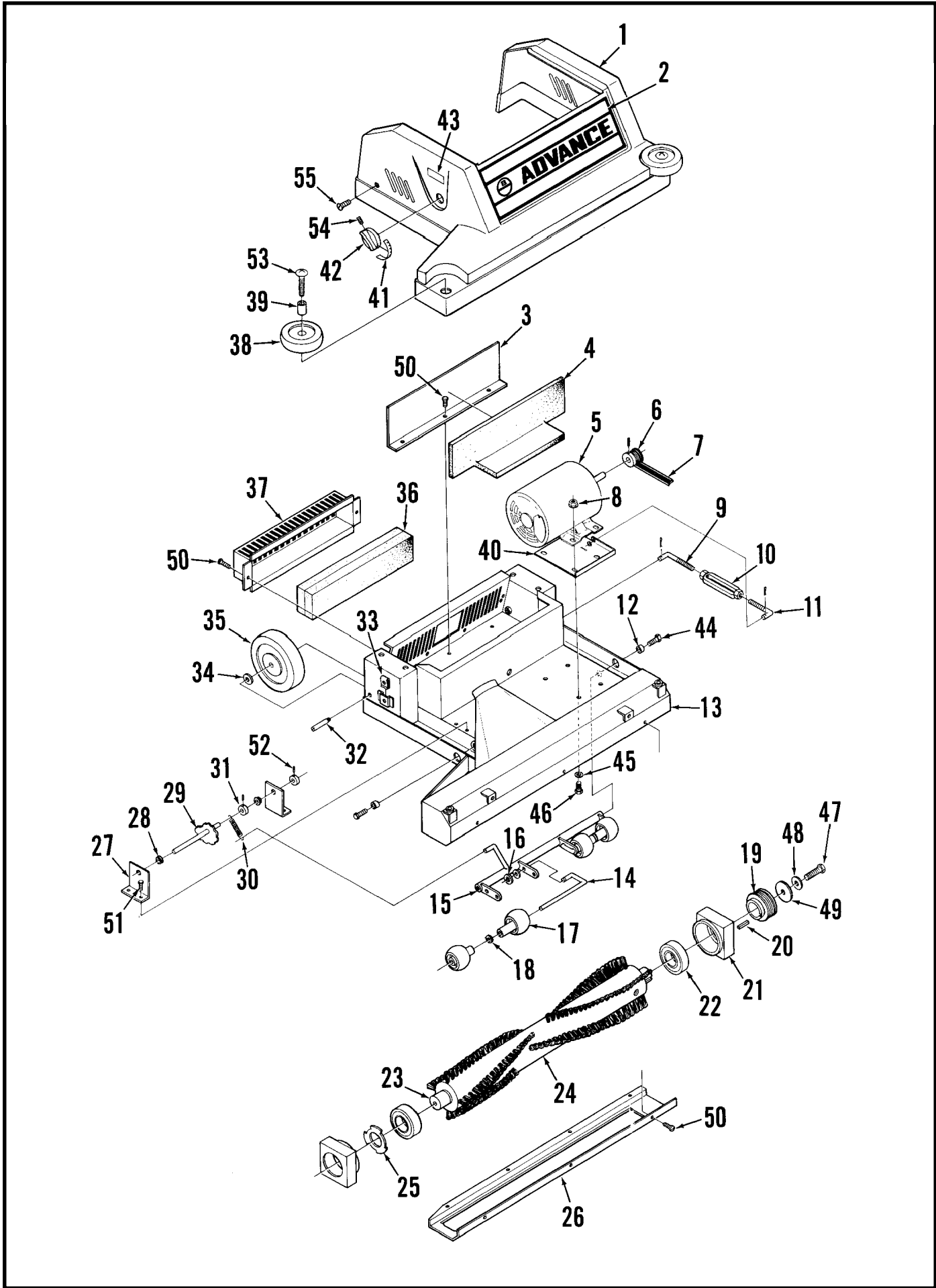
# TABLE OF CONTENTS

<b>DESCRIPTION</b>	<b>PAGE</b>
Base Assembly .....	1-2
Handle - Front .....	3-4
Handle - Rear .....	5-6
Shroud .....	7-8
Wiring Diagrams .....	9-10

## WHEN ORDERING PARTS

- \* Use the 6 digit numbers from the "Part No." columns in this parts list.
- \* Specify the model and serial number of the machine.
- \* Use the space below to record the model and serial number for future reference.

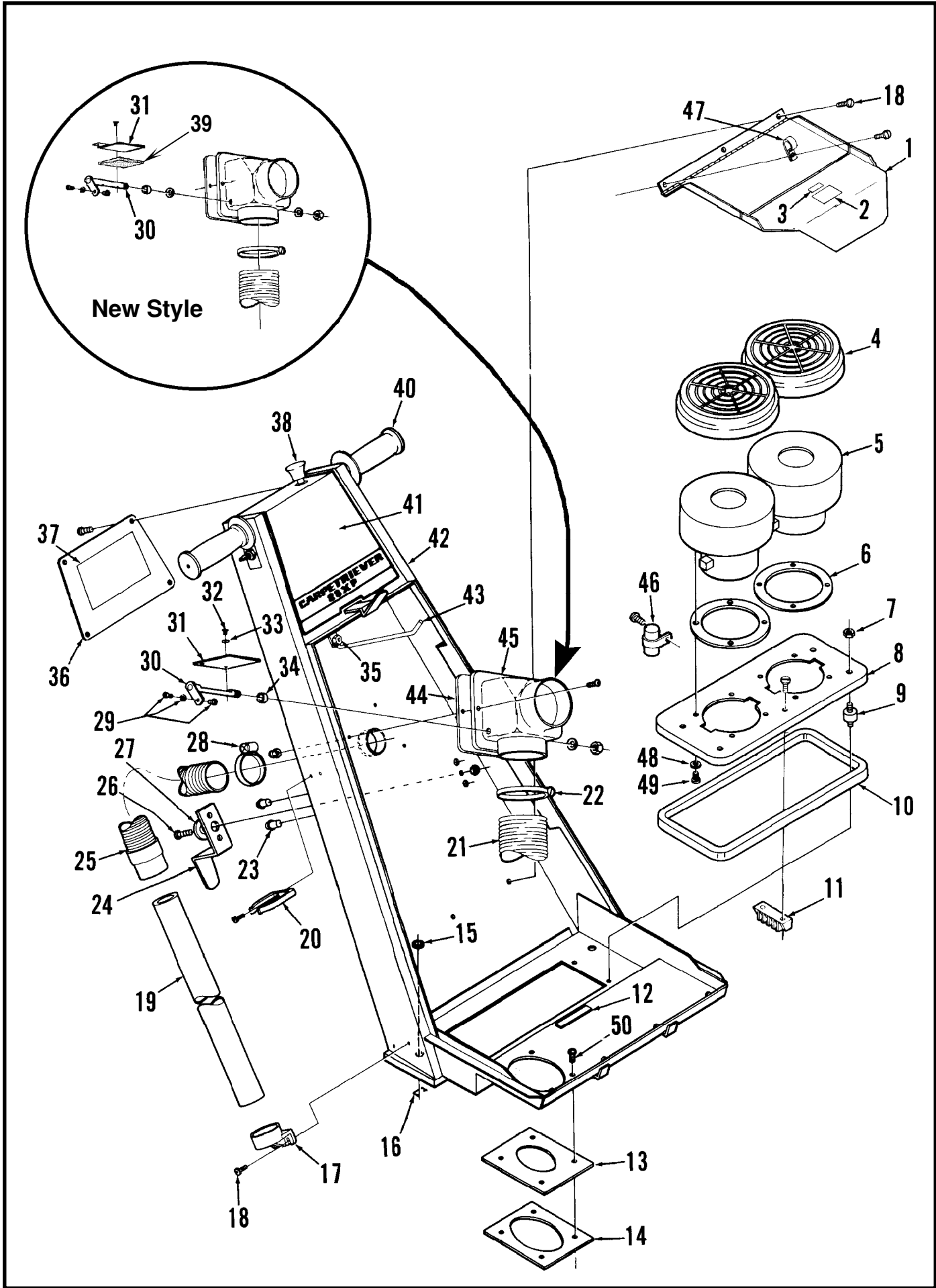
Model \_\_\_\_\_ Serial No. \_\_\_\_\_



## BASE ASSEMBLY

Item	Part No.	Qty	Description	Item	Part No.	Qty	Description
	330397	1	Shroud Assembly (#1, 2, 43)	26	330677	1	Shoe
1	330334	1	Base Shroud	27	331078	2	Bracket
*	330409	1	Button Plug <b>Note #1</b>	28	329098	2	Bushing
2	014285	1	Decal, Advance	29	330717	1	Cam
3	330314	1	Plate	30	330642	1	Spring
4	330577	1	Foam	31	331076	2	Collar
5	228435	1	Motor 100V	32	520845	2	Axle
	238160	1	Motor 115V	33	328855	2	Nut
	238155	1	Motor 230V	34	155373	2	Washer
6	330681	1	Sheave	35	330607	2	Wheel
7	331100	1	Belt	36	330573	2	Filter
8		4	5/16-18 Nut	37	330303	1	Grill
9	331093	1	Rod	38	363855	2	Wheel
10	206814	1	Turnbuckle	39	360139	2	Bushing
11	350109	1	Rod	40	238162	1	Motor Mount
12	321532	2	Bushing	41	023288	1	Decal, Knob
13	330552	1	Base	42	324502	1	Knob
14	325224	2	Pin	43	023290	1	Decal, Brush Adjust
15	330613	1	Bracket	44		2	1/4-20 x 3/4 Screw
16	325227	2	Nut	45		4	5/16 Lock Washer
17	323086	4	Roller	46		4	5/16-18 x 1/2 Screw
18	150150	2	Washer	47		1	5/16-18 x 5/8 Screw
19	330675	1	Sheave	48		1	5/16 Lock Washer
20	109258	1	Key	49		1	5/16 Flat Washer
21	322420	2	Bearing Block	50		12	#10-24 x 3/8 Screw
22	372773	2	Bearing	51		4	3/8-16 x 5/8 Screw
23	330671	1	Shaft	52		2	#10-24 x 3/16 Screw
24	330669	1	Brush	53		2	1/4-20 x 1 1/4 Screw
	330666	1	Brush Assembly (#19-25, 47-49)	54		1	#8-32 x 5/16 Screw
25	320153	1	Load Spring	55		4	#10-24 x 3/8 Screw

**Note #1:** This part is for machines with only (1) wheel, Item # 38.



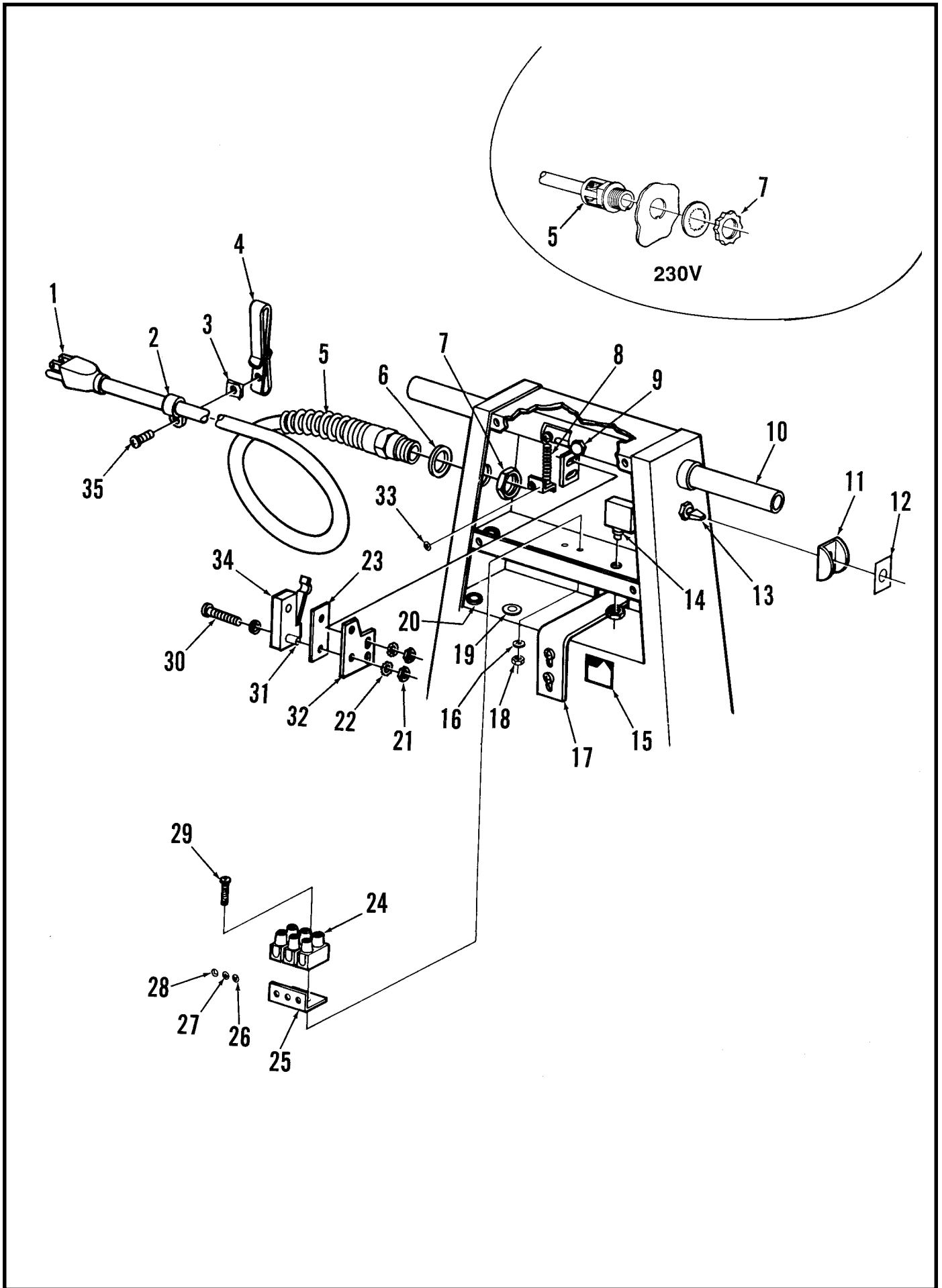
**HANDLE - FRONT**

Item	Part No.	Qty	Description	Item	Part No.	Qty	Description
1	331309	1	Tray	28	329145	1	Hose Clamp
2	023252	1	Decal, Filter	29	442445	1	Wire Swivel
	015871	1	Decal, Important (Japan)	30	331320	1	Lever (OBS) ( <b>See Note #1</b> )
3	014029	1	Decal, Caution		331348	1	Lever (new style)
4	384898	2	Filter	31	331302	1	Plate (OBS) ( <b>See Note #1</b> )
5	325096	2	Vacuum Motor 115V		331345	1	Plate (new style)
	203518	2	Carbon Brush Set 115V	32		2	#6-32 x 3/16 Screw
	300411	2	Vacuum Motor 230V	33		2	#6 Shakeproof Washer
	503017	2	Carbon Brush Set 230V	34	232181	1	Bushing
6	209325	2	Gasket	35		6	#10-24 Nut
7		8	1/4-20 Nut	36	330344	1	Cover
8	330348	1	Mounting Plate	37	023286	1	Decal, 115V Wiring
9	478684	4	Mount		023295	1	Decal, 230V Wiring
10	330749	1	Gasket	38	331349	1	Cable ( <b>See Note #2 / TSB 691, G-11</b> )
11	328062	1	Terminal Block	*	331350	1	Cable Support Bracket
12	200754	3'	Gasket Material (90 cm)	*	321559	2	Grommet
13	330631	1	Gasket	39	331352	1	Gasket (used on 331345)
14	330634	1	Nut Plate	40	900248	2	Grip
15	327409	6	Bushing	41	015038	1	Decal, Handle
16	162981	4	Strain Relief	42	331325	1	Handle
17	331301	1	Wand Holder	43	331334	1	Bag Hook
18		13	#10-24 x 3/8 Screw	44	331312	1	Gasket
19	331310	1	Wand	45	331313	1	Housing
20	404336	1	Clamp	46	331150	1	RFI Filter (230V only)
21	331332	1	Hose	47	442011	1	Clamp
*	442011	1	P-Clamp	48		14	#10 Shakeproof Washer
22	352829	2	Hose Clamp	49		8	#10-24 x 1/2 Screw
23	361321	2	Bullet Catch	50		4	#8-32 x 3/8 Screw
24	330368	1	Cord Hook	*	015872	1	Decal, Caution (Japan)
25	323718	1	Hose				
26		1	#10-24 x 3/4 Screw				
27	387678	1	Bushing				

\* = Not Shown

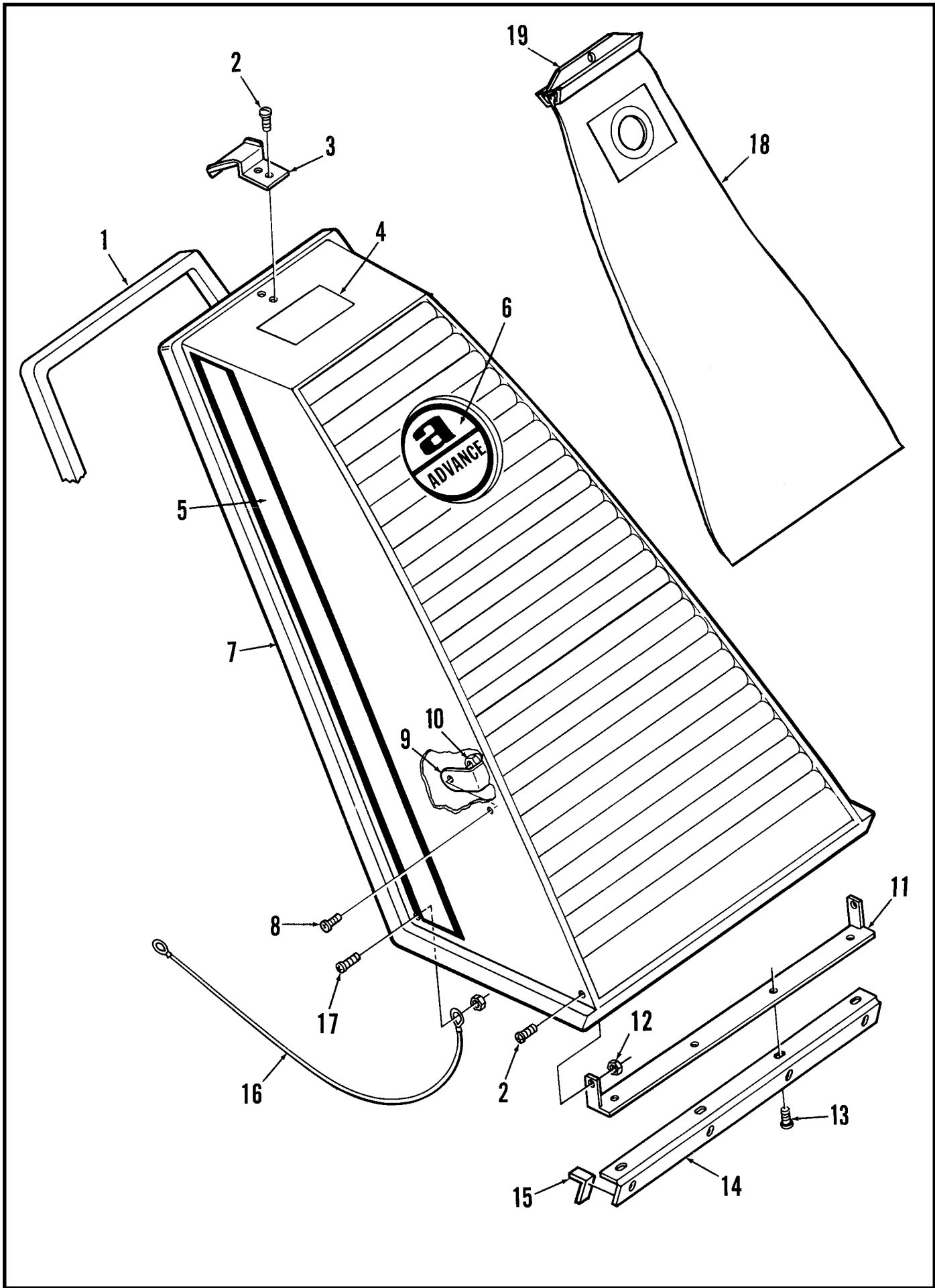
**Note #1:** PN's 331320 & 331302 are obsolete. Order lever weldment kit PN 331342 for replacement, (kit includes new style parts #30, 31 & 51).

**Note #2:** Enlarge mounting hole to 15/32" (12 mm) when replacing cable on older machines.



## HANDLE - REAR

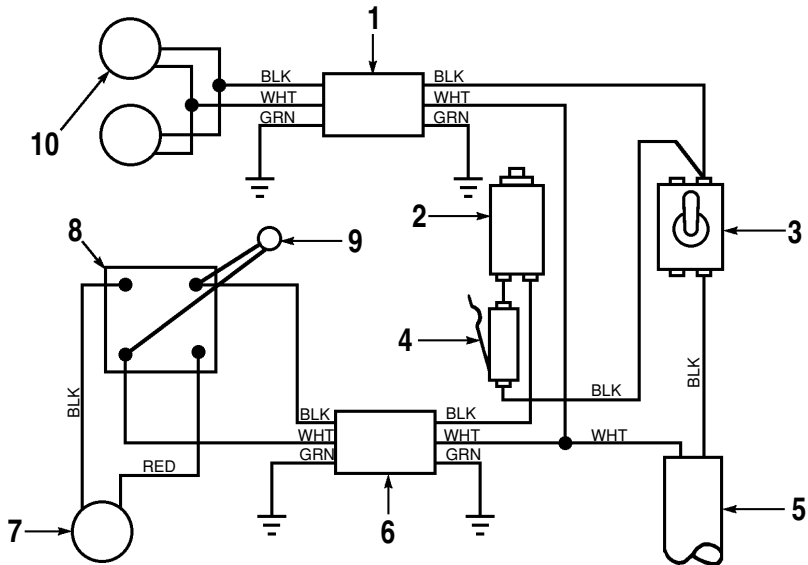
Item	Part No.	Qty	Description	Item	Part No.	Qty	Description
1	331430	1	Power Cord 100V	17	330343	1	Latch
	330871	1	Power Cord 115V	18		2	#4-40 Nut (230V only)
	330734	1	Power Cord 230V	19	321559	1	Grommet
2	342319	1	Clamp	20	327409	6	Bushing
3	322504	1	Nut	21		2	#6-32 Nut
4	300187	1	Belt Clip	22		2	#6 Shakeproof Washer
5	162736	1	Strain Relief 115V	23	331023	1	Insulator (230V only)
	183525	1	Strain Relief 230V	24	183523	1	Terminal Block (230V only)
6	200433	1	Washer (115V only)	25	183533	1	Insulator (230V only)
7	200441	1	Nut 115V	26	900231	1	Decal, Symbol "N" (230V only)
	183538	1	Nut 230V	27	900135	1	Decal, Ground (230V only)
8	328790	1	Spring	28	900232	1	Decal, Symbol "L" (230V only)
9		1	1/4-20 x 1/2 Screw	29		2	#4-40 x 7/8 Screw (230V only)
10	330898	1	Tube	30		2	#6-32 x 7/8 Screw
11	200352	1	Switch Guard (115V / 230V)	31	183545	2	Sleeve (230V only)
12	014016	1	Decal, Switch (115V / 230V)	32	330900	1	Plate
13	200340	1	Switch 115V	33	014119	1	Decal, Ground (230V only)
	301636	1	Switch 230V	34	388019	1	Brush Switch
14	329177	1	Brush Circuit Breaker 115V	35		5	#8-32 x 3/8 Screw
	329185	1	Brush Circuit Breaker 230V				
15	014362	1	Decal, Reset				
	015874	1	Decal, Reset (Japan)				
16		2	#4 Shprf Washer (230V only)				



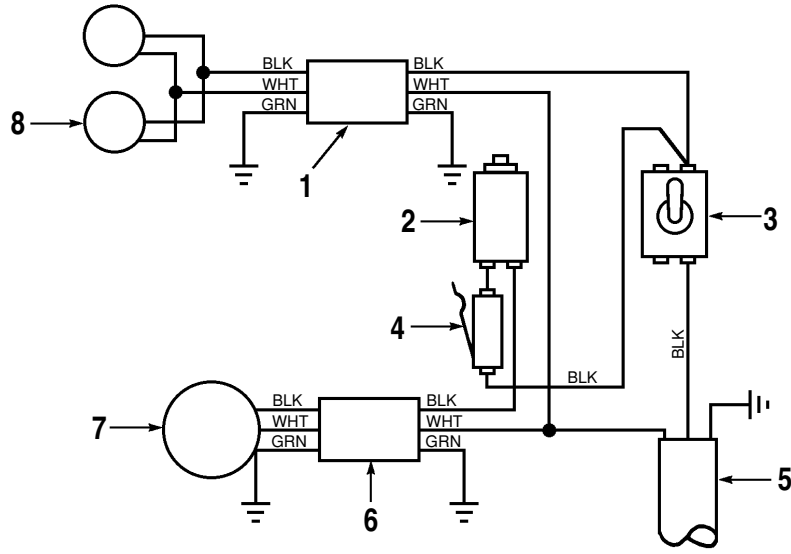
# SHROUD

Item	Part No.	Qty	Description
	331324	1	Shroud Assembly (#1-12)
1	449227	7'	Gasket Material (215 cm)
2		4	#6-32 x 5/16 Screw
3	330339	1	Latch
4	015314	1	Decal, Warning
	017025	1	Decal, Warning (Japan)
5	014291	1	Decal, Right Stripe
	014290	1	Decal, Left Stripe
6	015326	1	Decal, Logo
7	331323	1	Shroud
8		2	#10-24 x 1/2 Screw
9	331318	1	Strap
10		2	#10-24 Nut
11	330340	1	Nut Plate
12		4	#6-32 Nut
13		4	#10-24 x 3/8 Screw
14	330347	1	Hinge
15	330745	1'	Gasket Material (30 cm)
16	330391	1	Wire Rope
17		2	#6-32 x 3/8 Screw
18	330589	1	Cloth Bag
	330690	1	Paper Bag (package of 6) (optional)
19	330608	1	Bag Clip for Cloth Bag

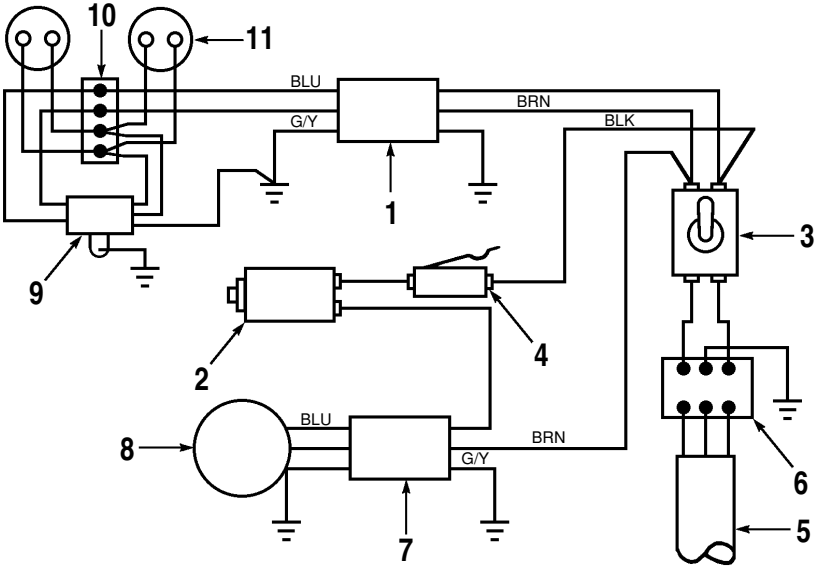
100V



115V



230V



## 100V WIRING DIAGRAM

Item	Part No.	Qty	Description
1	331112	1	Cord Set
2	329185	1	Brush Circuit Breaker
3	200340	1	Main Switch
4	388019	1	Brush Switch
5	331430	1	Cord Set
6	331106	1	Cord Set
7	228429	1	Brush Motor
8	180163	1	Rectifier
9	387554	1	Varistor
10	325096	2	Vacuum Motor

## 115V WIRING DIAGRAM

Item	Part No.	Qty	Description
1	331112	1	Cord Set
2	329177	1	Brush Circuit Breaker
3	200340	1	Main Switch
4	388019	1	Brush Switch
5	330871	1	Cord Set
6	331106	1	Cord Set
7	238160	1	Brush Motor
8	325096	2	Vacuum Motor

## 230V WIRING DIAGRAM

Item	Part No.	Qty	Description
1	331136	1	Cord Set
2	329185	1	Brush Circuit Breaker
3	301636	1	Main Switch
4	388019	1	Brush Switch
5	330734	1	Cord Set
6	183523	1	Terminal Block
7	331138	1	Cord Set
8	238155	1	Brush Motor
9	331150	1	RFI Filter
10	328062	1	Terminal Block
11	300411	2	Vacuum Motor



Nilfisk-Advance, Inc.  
14600 21st Avenue North  
Plymouth, MN, 55447-3408  
[www.nilfisk-advance.com](http://www.nilfisk-advance.com)  
Phone: 800-989-2235  
Fax: 800-989-6566  
©2000 Nilfisk-Advance, Inc.,  
Plymouth, MN 55447-3408  
Printed in the U.S.A.