



Electronic Service Manuals

This electronic document is provided as a service to our customers. We do not create the contents of the information contained in this document. Should you have detailed questions pertaining to the information contained in this document, you may contact Michco, or the manufacturer which provided the original information in this electronic deliverable. Michco's only part in this electronic deliverable was the electronic assembly process.

You may contact Michco through the following methods:
Phone (517) 484-9312 or (800) 331-3339 MI, OH, IN only
2011 N. High St. -- Lansing, Michigan -- 48906
Fax: (517) 484-9836
Email: CustServ@Michco.com
Web site: www.Michco.Com
Parts Web site: www.FloorMachineParts.Com

Order Parts on Line at:
www.FloorMachineParts.Com

Directly to Parts & Service:
By Email: **Shop@Michco.com**
By Fax: (517) 702-2041
By Voice: Use numbers above.

Serving the Cleaning Industry Since 1922

Notice: All copyrighted material remains property of original owners, all trademarks are property of respective owners. Manuals are subject to Manufacturer's reproduction limitations. Originals or reproductions were provided by manufacturers through a request. We make no warranty as to the correctness of information provided in this document and you assume all risk.

CARPETRIEVER 28DB

MODEL 330401

THIS PARTS LIST IS FOR MACHINES
AFTER SERIAL NUMBER 325179.

PARTS LIST



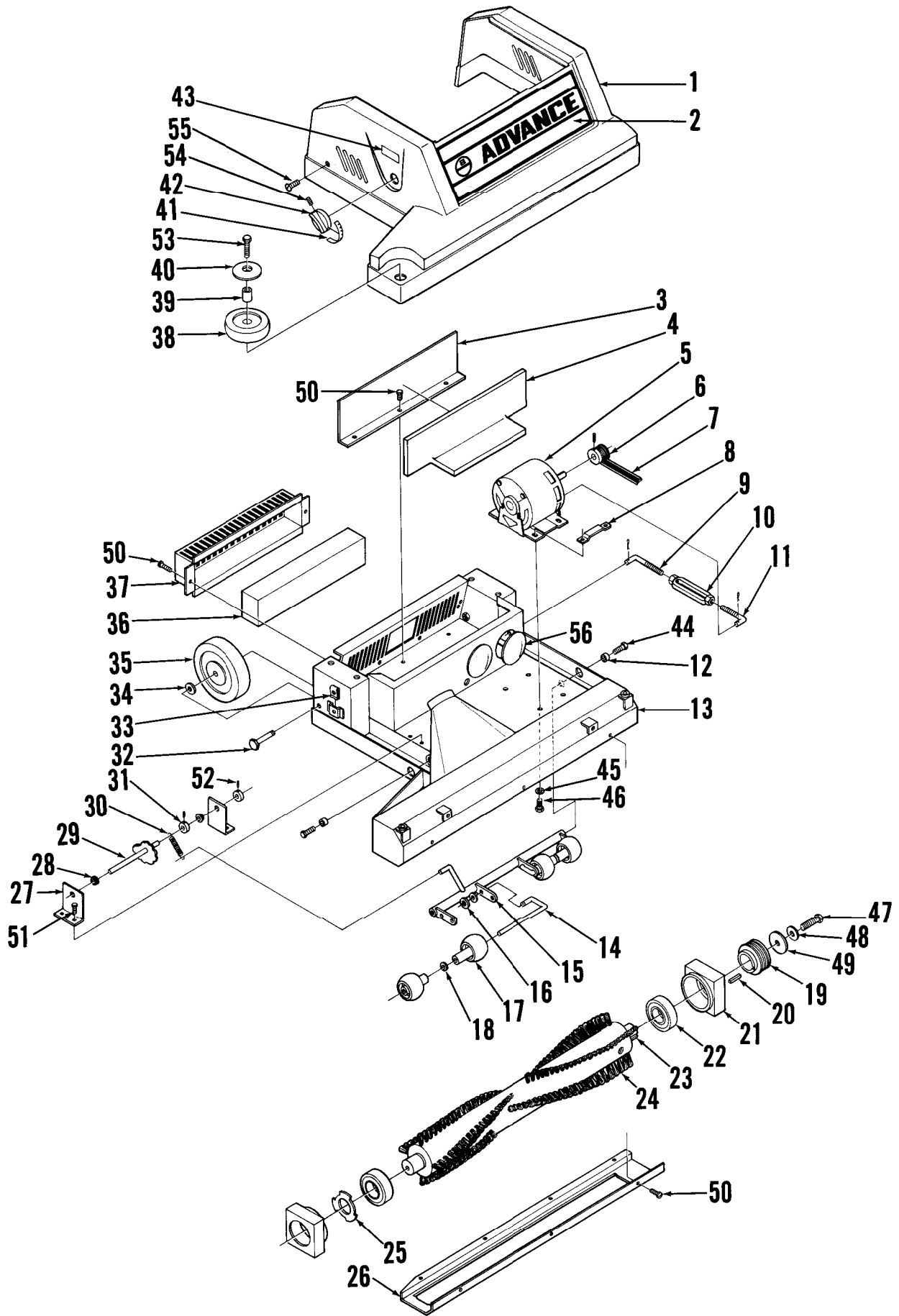
ADVANCE
MACHINE COMPANY

INTERNATIONAL HEADQUARTERS, Plymouth, MN 55447-3408
EUROPE, Llantrisant, Pontyclun, Mid-Glamorgan CF7 8YZ Wales, United Kingdom
CANADA, 1295 Crestlawn Drive, Mississauga, Ontario L4W 1A9



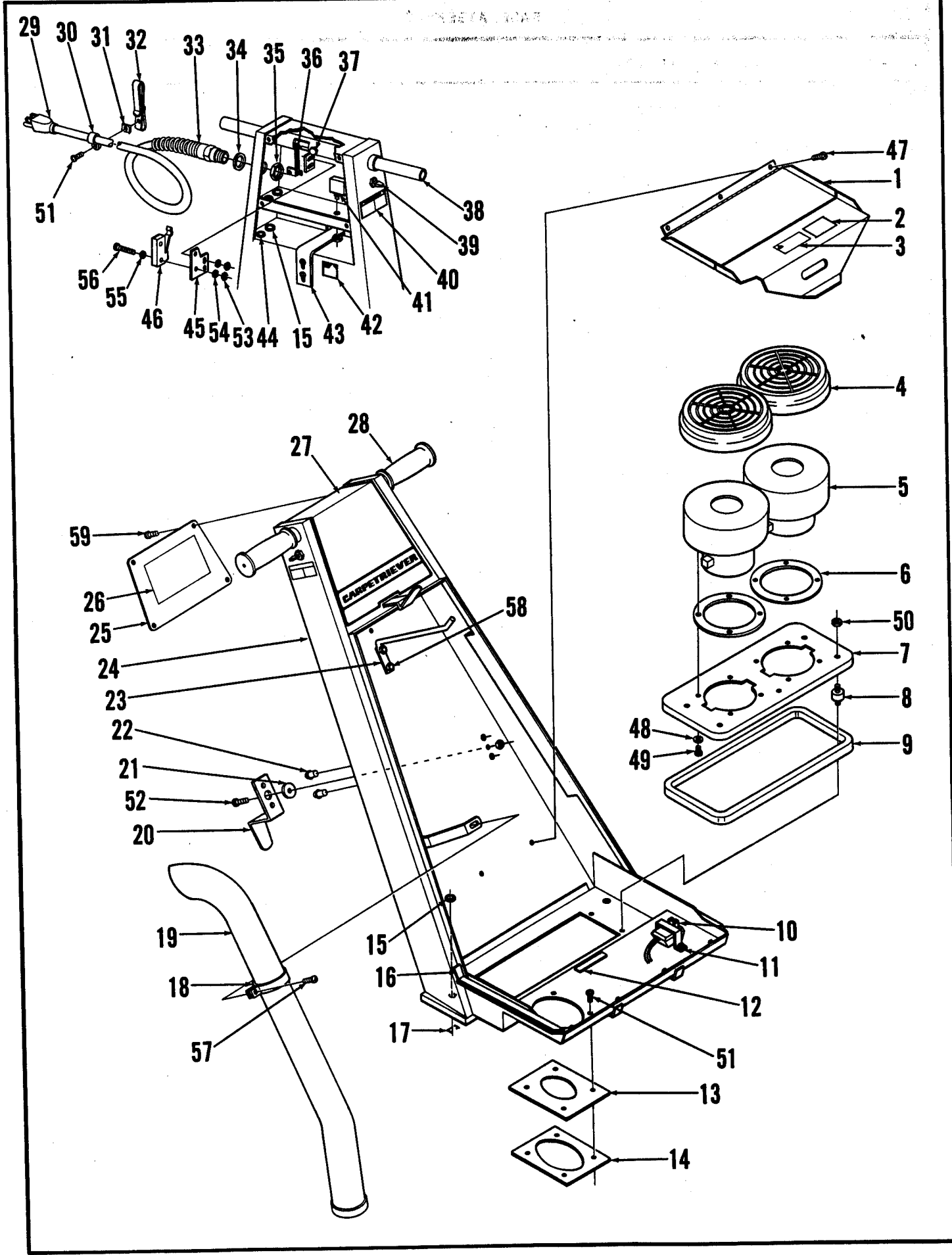
INDEX FOR FORM NUMBER 042199

<u>Description</u>	<u>Location</u>	<u>Page</u>
Base	C12	1
Cover, Bag Housing	D3	5
Handle	D1	3
Motor, Vacuum	D5	7
Wiring Diagram	D6	8



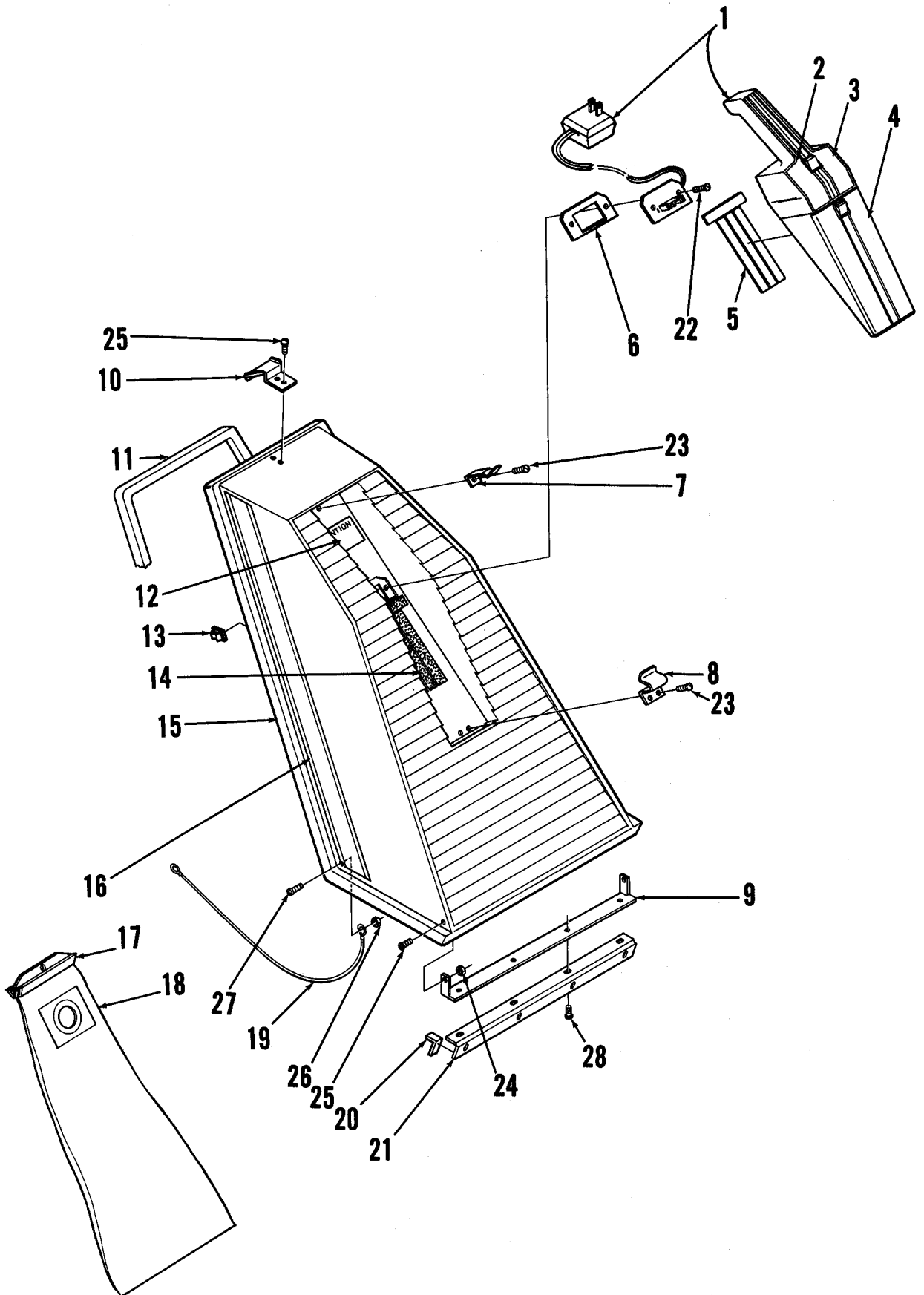
BASE ASSEMBLY

Item	Part No.	Qty	Description	Item	Part No.	Qty	Description
1	330334	1	Base Shroud	29	330717	1	Cam
2	014285	1	Decal, Advance	30	330642	1	Spring
3	330314	1	Plate	31	331076	2	Collar
4	330577	1	Foam	32	520845	2	Axle
5	238147	1	Motor	33	328855	2	Nut
6	330681	1	Sheave	34	155373	2	Washer
7	331100	1	Belt	35	330607	2	Wheel
8	218065	2	Nut Plate	36	330573	1	Filter
9	330686	1	Rod	37	330303	1	Grill
10	206814	1	Turnbuckle	38	330683	1	Wheel
11	350109	1	Rod	39	330741	1	Bushing
12	321532	2	Bushing	40	330335	1	Cap
13	330336	1	Base	41	023288	1	Decal, Knob
14	325224	2	Pin	42	324502	1	Knob
15	330613	1	Bracket	43	023290	1	Decal, Brush Adjust
16	325227	2	Nut	44		2	1/4-20 X 3/4 Screw
17	323086	4	Roller	45		4	5/16 Lock Washer
18	150150	2	Washer	46		4	5/16-18 X 1/2 Screw
19	330675	1	Sheave	47		1	5/16-18 X 5/8 Screw
20	109258	1	Key	48		1	5/16 Lock Washer
21	322420	2	Bearing Block	49		1	5/16 Flat Washer
22	372773	2	Bearing	50		12	10-24 X 3/8 Screw
23	330671	1	Shaft	51		4	3/8-16 X 5/8 Screw
24	330669	1	Brush	52		2	10-24 X 3/16 Screw
	330666	1	Brush Assembly (#1-19)	53		1	1/4-20 X 1 1/4 Screw
25	320153	1	Load Spring	54		1	8-32 X 5/16 Screw
26	330677	1	Shoe	55		4	10-24 X 3/8 Screw
27	331078	2	Bracket	56	330056	2	Button Plug
28	329098	2	Bushing				



HANDLE ASSEMBLY

#	PN	QTY	DESCRIPTION	#	PN	QTY	DESCRIPTION
	330445	1	HANDLE ASSEMBLY	56		2	6-32 X 7/8 SCREW
1	330351	1	TRAY	57		1	10-24 X 1/2 SCREW
2	023252	1	DECAL, FILTER	58		4	10-24 X 3/8 SCREW
3	014029	1	DECAL, CAUTION	59		4	10-24 X 3/8 SCREW
4	384898	2	FILTER				
5	325096	2	VACUUM MOTOR, 115V				
	203518	2	CARBON BRUSH SET				
6	209325	2	GASKET				
7	330348	1	MOUNTING PLATE				
8	478684	4	MOUNT				
9	330749	1	GASKET				
10	330441	1	CHARGER AND HAND VAC				
11	330435	1	CLAMP				
12	200754	1	GASKET 3"				
13	330631	1	GASKET				
14	330634	1	NUT PLATE				
15	327409	6	BUSHING				
16	331126	2	GASKET 12"				
17	162981	4	STRAIN RELIEF				
18	330345	1	CLAMP				
19	330346	1	INLET TUBE				
20	330368	1	CORD HOOK				
21	387678	1	BUSHING				
22	361321	2	BULLET CATCH				
23	330579	1	BAG HOOK				
24	330436	1	HANDLE				
25	330344	1	COVER				
26	014534	1	DECAL, WIRING				
27	014286	1	DECAL, HANDLE				
28	388545	2	GRIP				
29	330871	1	POWER CORD				
30	342319	1	CLAMP				
31	322504	1	NUT				
32	300187	1	BELT CLIP				
33	162736	1	STRAIN RELIEF				
34	200433	1	WASHER				
35	200441	1	NUT				
36	328790	1	SPRING				
37	234079	1	SCREW				
38	330898	1	TUBE				
39	200340	1	SWITCH				
40	015314	1	DECAL, WARNING				
41	329177	1	CIRCUIT BREAKER				
42	014362	1	DECAL, RESET				
43	330343	1	LATCH				
44	320319	2	BUSHING				
45	330900	1	SWITCH PLATE				
46	388019	1	SWITCH				
47		3	10-24 X 3/8 SCREW & NUT				
48		8	10-24 LOCKWASHER				
49		8	10-24 X 1/2 SCREW				
50		8	1/4-20 NUT				
51		7	8-32 X 3/8 SCREW				
52		1	10-24 X 3/4 SCREW				
53		2	6-32 NUT				
54		2	6-32 SHAKEPROOF WASHER				
55		2	6-32 FLAT WASHER				

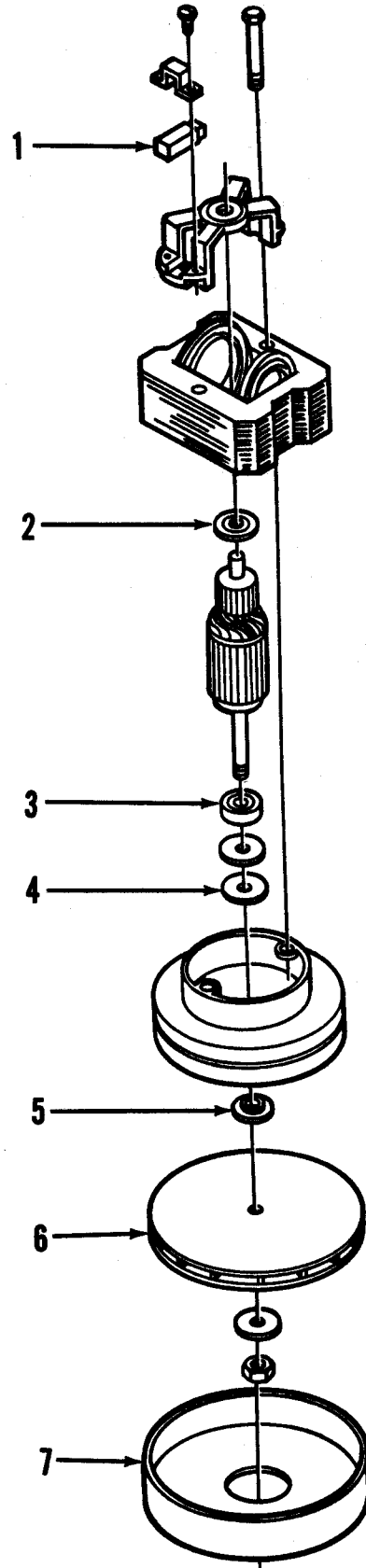


SHROUD ASSEMBLY

#	PN	QTY	DESCRIPTION
	330442	1	HAND VAC ASSY (#1-5)
1	330441	1	HAND VAC AND CHARGER
2	014569	1	DECAL, RIGHT
3	014570	1	DECAL, LEFT
4	014571	1	DECAL, FRONT
5	171319	1	VELCRO
6	330448	1	GASKET
7	330431	1	CLIP
8	330432	1	CLIP
9	330340	1	NUT PLATE
10	330339	1	LATCH PLATE
11	449227	1	GASKET
12	014572	1	DECAL, ATTENTION
13	900143	4	CORD CLIP
14	170961	1	VELCRO
15	330428	1	SHROUD
	330427	1	SHROUD ASSY (#7-15)
16	014291	1	DECAL, RIGHT STRIPE
	014290	1	DECAL, LEFT STRIPE
17	330608	1	BAG CLAMP
18	330589	1	CLOTH BAG
	330690	1	PAPER BAG, PKG OF 6
19	325240	1	WIRE ROPE
20	330745	2	GASKET 3"
21	330347	1	HINGE
22	230235	2	RIVET
23	312045	3	RIVET
24		4	6-32 NUT
25		4	6-32 X 5/16 SCREW
26		1	6-32 NUT/WASHER
27		1	6-32 X 3/8 SCREW
28		4	10-24 X 3/8 SCREW

VACUUM MOTOR, 115V

#	PN	QTY	DESCRIPTION
	325096	2	VACUUM MOTOR 115V
1	203518	1	CARBON BRUSH SET
2	228388	1	WASHER
3	228051	1	BEARING
4	202630	1	WASHER
5	203424	1	SPACER
6	208191	1	FAN
7	325088	1	SHELL



WIRING DIAGRAM, 115V

#	PN	QTY	DESCRIPTION
	014534	1	DECAL, WIRING
1	331112	1	CORD ASSY
2	470785	1	WIRE ASSY
3	200340	1	SWITCH
4	330871	1	POWER CORD
5	330444	1	CORD ASSY
6	330441	1	CHARGER AND HAND VAC
7	331106	1	CORD ASSY
8	238147	1	MOTOR, 115V
9	329177	1	CIRCUIT BREAKER
10	330876	1	WIRE ASSY
11	388019	1	SWITCH
12	325096	2	VACUUM MOTOR

