



Electronic Service Manuals

This electronic document is provided as a service to our customers. We do not create the contents of the information contained in this document. Should you have detailed questions pertaining to the information contained in this document, you may contact Michco, or the manufacturer which provided the original information in this electronic deliverable. Michco's only part in this electronic deliverable was the electronic assembly process.

You may contact Michco through the following methods:
Phone (517) 484-9312 or (800) 331-3339 MI, OH, IN only
2011 N. High St. -- Lansing, Michigan -- 48906
Fax: (517) 484-9836
Email: CustServ@Michco.com
Web site: www.Michco.Com
Parts Web site: www.FloorMachineParts.Com

Order Parts on Line at:
www.FloorMachineParts.Com

Directly to Parts & Service:
By Email: **Shop@Michco.com**
By Fax: (517) 702-2041
By Voice: Use numbers above.

Serving the Cleaning Industry Since 1922

Notice: All copyrighted material remains property of original owners, all trademarks are property of respective owners. Manuals are subject to Manufacturer's reproduction limitations. Originals or reproductions were provided by manufacturers through a request. We make no warranty as to the correctness of information provided in this document and you assume all risk.

AdVac™ 12



PARTS LIST

**Advance MODELS 56703400(Obsolete)
56703410(Obsolete).**



**Nilfisk
Advance**

setting standards

7/90 revised 1/01 FORM NO. 56042229

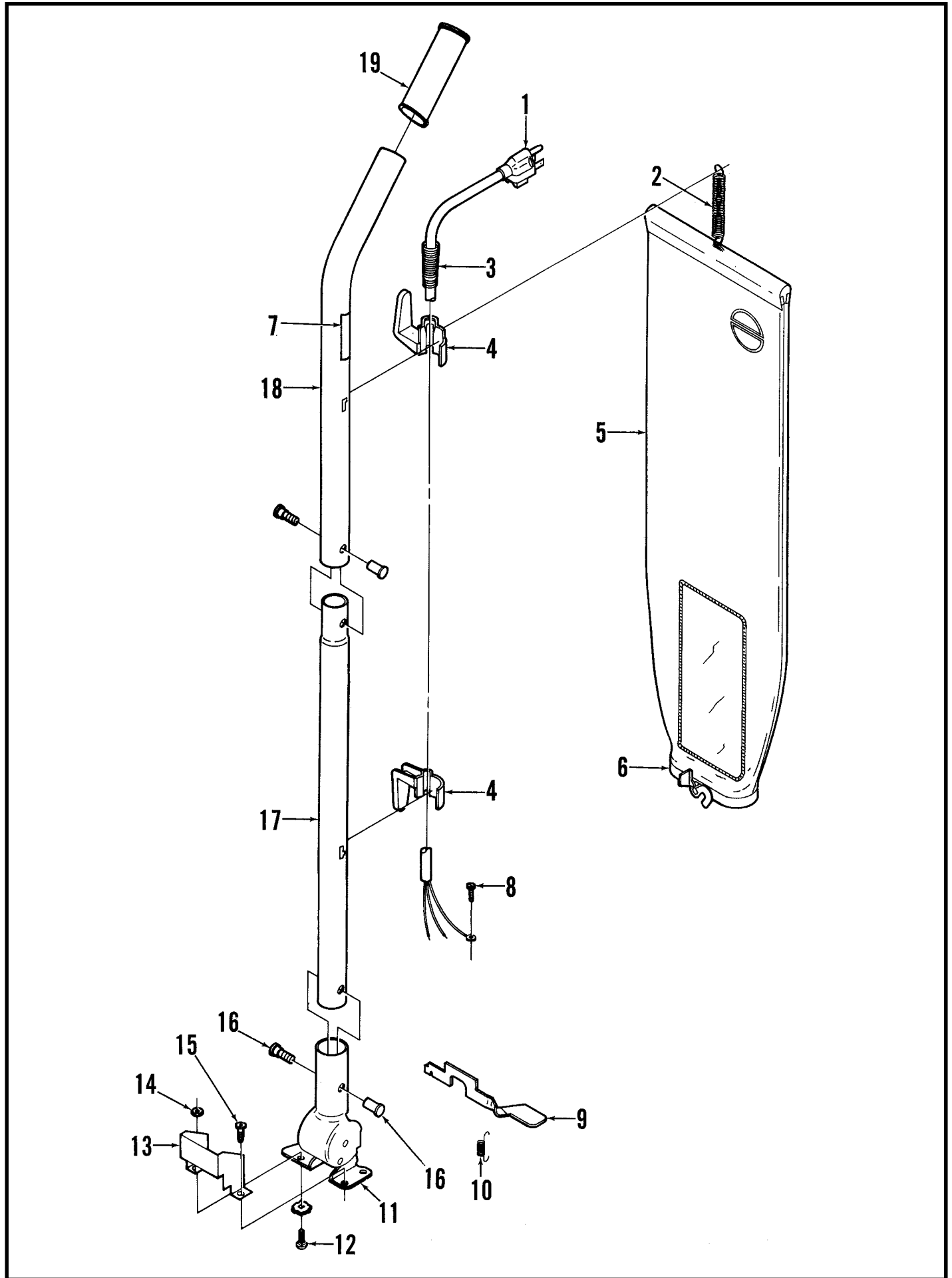
TABLE OF CONTENTS

<u>DESCRIPTION</u>	<u>PAGE</u>
Handle and Bag Assembly	1-2
Base Assembly	3-4
Wiring Diagram	5

WHEN ORDERING PARTS

- * Use the 8 digit numbers from the "Ref. No." columns in this parts list.
- * Specify the model and serial number of the machine.
- * Use the space below to record the model and serial number for future reference.

Model _____ Serial No. _____



HANDLE AND BAG ASSEMBLY

Item	Ref. No.	Qty	Description
1	56703495	1	Power Cord 115V
	56703541	1	Power Cord 100V
2	56703513	1	Spring
3	56703503	*	Spring pkg of 5
4	56703490	1	Cord Hook Set 115V (includes #16 qty 2)
	56703547	1	Cord Hook Set 100V (includes #16 qty 2)
5	56703511	1	Cloth Bag Assembly
	56703525	1	Zippered Cloth Bag (optional, for disposable bags only)
	56703533	*	Disposable Paper Bags pkg of 3
6	56703515	1	Bag Adapter & Gasket Assy
	56703517	1	Gasket
	56703519	1	Rivet
	56703521	1	Washer
7	56703505	1	Decal, Warning
8	56703496	*	Screw pkg of 10
9	56703445	1	Foot Pedal
10	56703430	*	Spring pkg of 5
11	56703498	1	Handle Socket
12	56703709	*	Bolt pkg of 10
13	56703499	1	Socket Shield
14	56703497	2	Nut
15	56703427	*	Screw pkg of 10
16	56703492	*	Handle Screw Set pkg of 6
17	56703494	1	Lower Handle Tube
18	56703491	1	Upper Handle Assy (#18 & 19)
19	56703501	1	Hand Grip

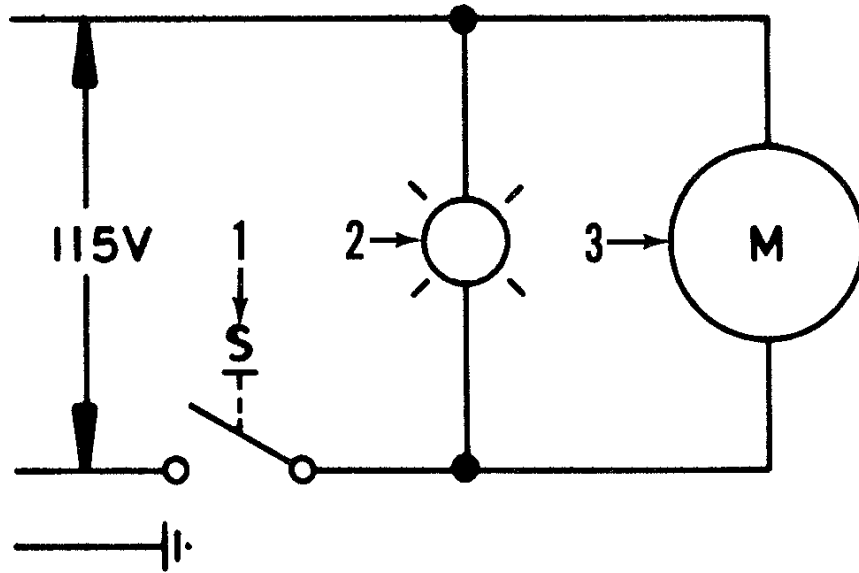
* = sold in package quantities only

BASE ASSEMBLY

Item	Ref. No.	Qty	Description
1	56703422	1	Hood 115V
	56703545	1	Hood 100V
	56703557	1	Padded Cover for Base Housing (not shown) (Optional Accessory)
2	56703437	1	Strain Relief 115V
	56703543	1	Strain Relief 100V
3	56703496	*	Screw, pkg of 10
4	56703440	*	Wire Nut, pkg of 10
5	56703441	3	Nut
6	56703438	1	Wire Assembly
7	56703442	1	Switch
8	56703423	1	Light Bulb
9	56703439	1	Wire Assembly
10	56703428	1	Motor Assembly 100V, 115V
	56703480	2	** Carbon Brush
	56703487	1	** Fan
11	56703429	1	Motor Seal
12	56703427	*	Screw, pkg of 10
13	56703425	1	Light Socket
14	56703444	1	Wire Clip
15	56703431	*	Screw, pkg of 10
16	56703426	1	Light Shield
17	56703467	*	Spring, pkg of 6
18	56703448	1	Base
	56703449	1	Right Cam (not shown)
	56703450	1	Left Cam (not shown)
19	56703453	1	Guard
20	56703436	2	Screw
21	56703446	1	Retainer
22	56703447	*	Screw, pkg of 10
23	56703466	*	Clip, pkg of 5
24	56703464	1	Rear Axle
25	56703465	*	Rear Wheel, pkg of 2
26	56703456	1	Belt
27	56703535	1	Brush Assembly
28	56703463	1	Bottom Plate Assembly (#36,37)
29	56703462	1	Foam Tape
30	56703421	1	Knob Assembly
31	56703420	*	Screw, pkg of 10
32	56703455	1	Front Axle
33	56703468	*	Front Wheel, pkg of 2
34	56703435	2	Wheel Cover
	56703432	*	Screw & Clamp Set (#43,44,15) pkg of 6
35	56703434	*	Clamp, pkg of 6
36	56703433	*	Set Screw, pkg of 10
37	56703424	1	Lens
38	56703443	1	Decal, Stripe
39	56703469	1	Bristle Strip Set

* = sold in package quantities only

** = repair parts for 56703428



WIRING DIAGRAM

Item	Ref. No.	Qty	Description
------	----------	-----	-------------

1	56703442	1	Switch
2	56703425	1	Light Socket
	56703423	1	Light Bulb
3	56703428	1	Motor Assy 115V



Nilfisk-Advance, Inc.
14600 21st Avenue North
Plymouth, MN, 55447-3408
www.nilfisk-advance.com
Phone: 800-989-2235
Fax: 800-989-6566
©2000 Nilfisk-Advance, Inc.,
Plymouth, MN 55447-3408
Printed in the U.S.A.