



Electronic Service Manuals

This electronic document is provided as a service to our customers. We do not create the contents of the information contained in this document. Should you have detailed questions pertaining to the information contained in this document, you may contact Michco, or the manufacturer which provided the original information in this electronic deliverable. Michco's only part in this electronic deliverable was the electronic assembly process.

You may contact Michco through the following methods:
Phone (517) 484-9312 or (800) 331-3339 MI, OH, IN only
2011 N. High St. -- Lansing, Michigan -- 48906
Fax: (517) 484-9836
Email: CustServ@Michco.com
Web site: www.Michco.Com
Parts Web site: www.FloorMachineParts.Com

Order Parts on Line at:
www.FloorMachineParts.Com

Directly to Parts & Service:
By Email: **Shop@Michco.com**
By Fax: (517) 702-2041
By Voice: Use numbers above.

Serving the Cleaning Industry Since 1922

Notice: All copyrighted material remains property of original owners, all trademarks are property of respective owners. Manuals are subject to Manufacturer's reproduction limitations. Originals or reproductions were provided by manufacturers through a request. We make no warranty as to the correctness of information provided in this document and you assume all risk.

AdVac™ 1205



PARTS LIST

Advance MODEL 56703406(Obsolete)



Advance
by Nilfisk-Advance

revised 1/02 FORM NUMBER 56042268

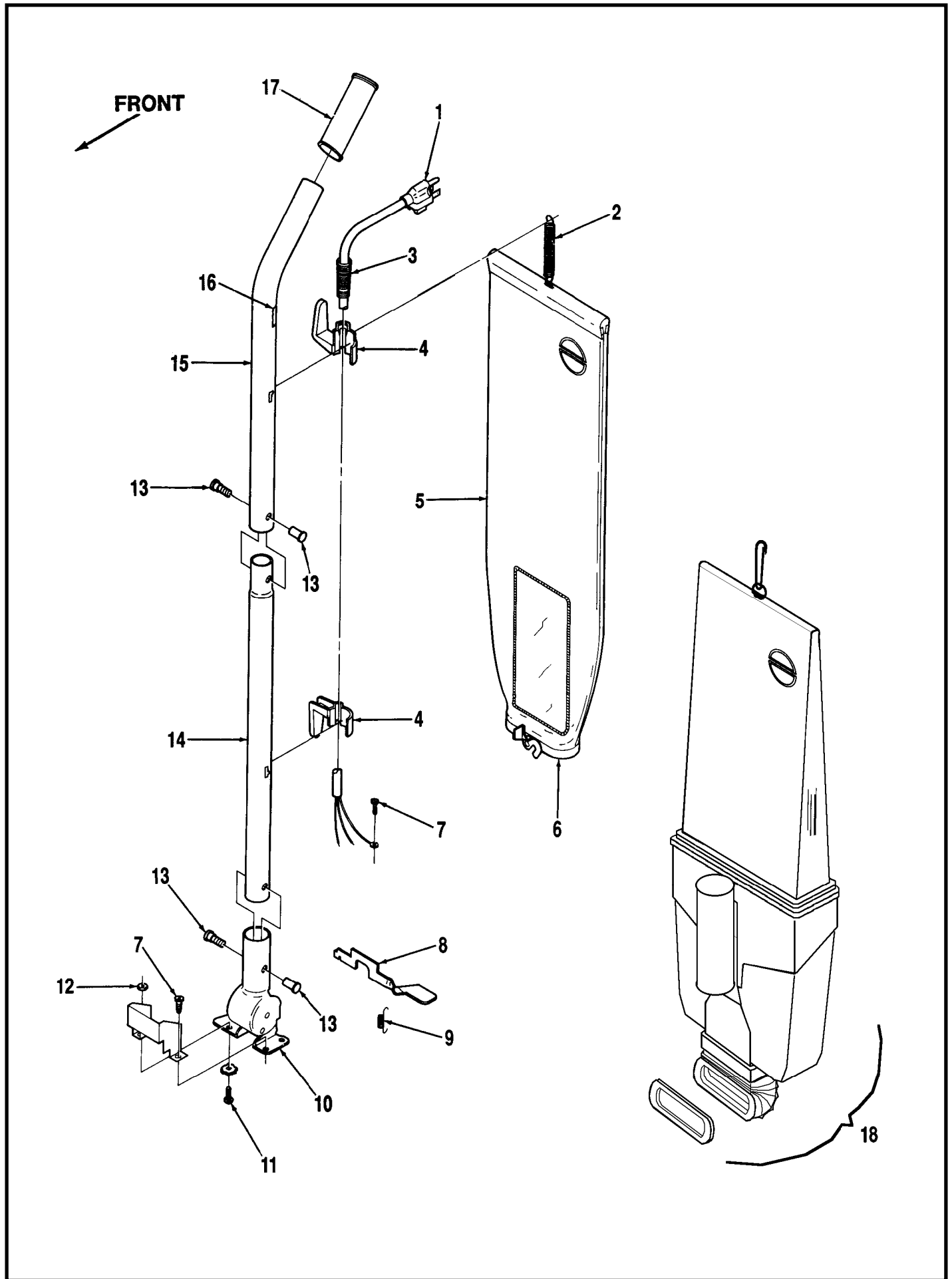
TABLE OF CONTENTS

DESCRIPTION	PAGE
Handle and Bag Assembly	1-2
Base Assembly (before SN 932324828)	3-4
Motor Assembly (before SN 932324828)	5-6
Base Assembly (after SN 932324827)	7-8
Motor Assembly (after SN 932324827)	9-10
Wiring Diagram	11

WHEN ORDERING PARTS

- * Use the 8 digit numbers from the "Ref. No." columns in this parts list.
- * Specify the model and serial number of the machine.
- * Use the space below to record the model and serial number for future reference.

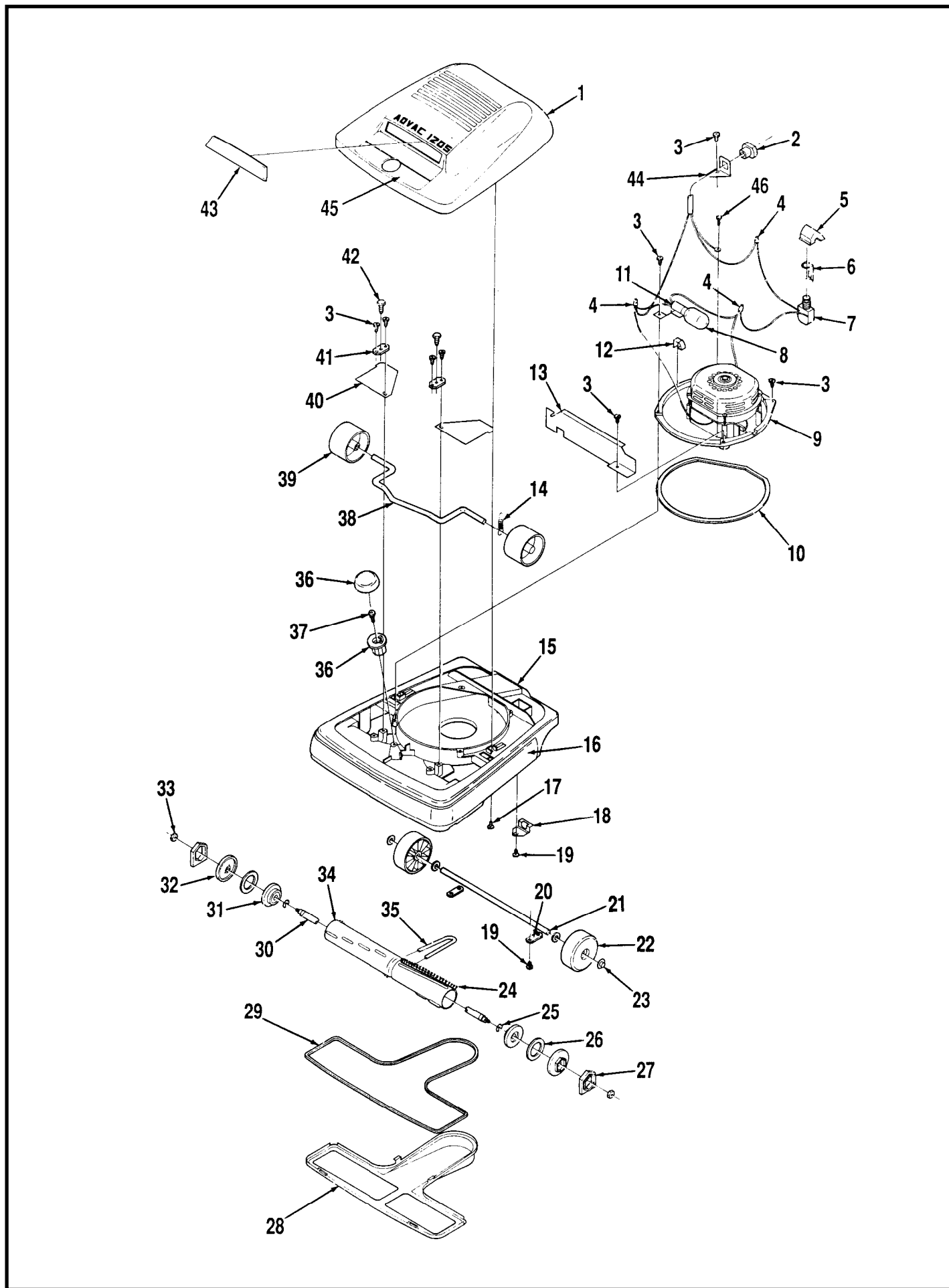
Model _____ Serial No. _____



HANDLE AND BAG ASSEMBLY

Item	Ref. No.	Qty	Description
1	56703495	1	Power Cord
2	56703513	1	Spring
3	56703503	*	Spring - pkg of 5
	56703356	1	Strain Relief Spring
4	56703490	1	Cord Hook Set
5	56703511	1	Cloth Bag Assembly - standard
	56703525	1	Zippered Cloth Bag (optional, for disposable bags only)
	56703533	*	Disposable Paper Bags - pkg of 3
	56703549	*	Disposable Paper Bags - case of 36
6	56703515	1	Bag Adapter & Gasket Assembly
	56703517	1	Gasket
	56703519	1	Rivet
	56703521	1	Washer
7	56703427	*	Screw - pkg of 10
8	56703445	1	Foot Pedal
9	56703430	*	Spring - pkg of 5
10	56703498	1	Handle Socket
11	56100032	*	Bolt - pkg of 10
12	56703497	*	Nut - pkg of 10
13	56703492	*	Handle Screw Set - pkg of 6
14	56703494	1	Lower Handle Tube
15	56703491	1	Upper Handle Assembly (#15,17)
16	56703505	1	Decal, Warning
17	56703501	1	Hand Grip
18	56703567	1	Optional Dirt Cup Kit, includes:
	56703569	1	Upper Handle Assembly
	56703571	1	Upper Cord Retainer
	56703577	1	Dirt Cup Assembly
	56703579	1	Bellows
	56703581	1	Bellows Clamp
	56703583	1	Bag Assembly
	56703585	1	Cable Clamp
	56703587	3	Screw
	56703559	1	Template

* = sold in package quantities only

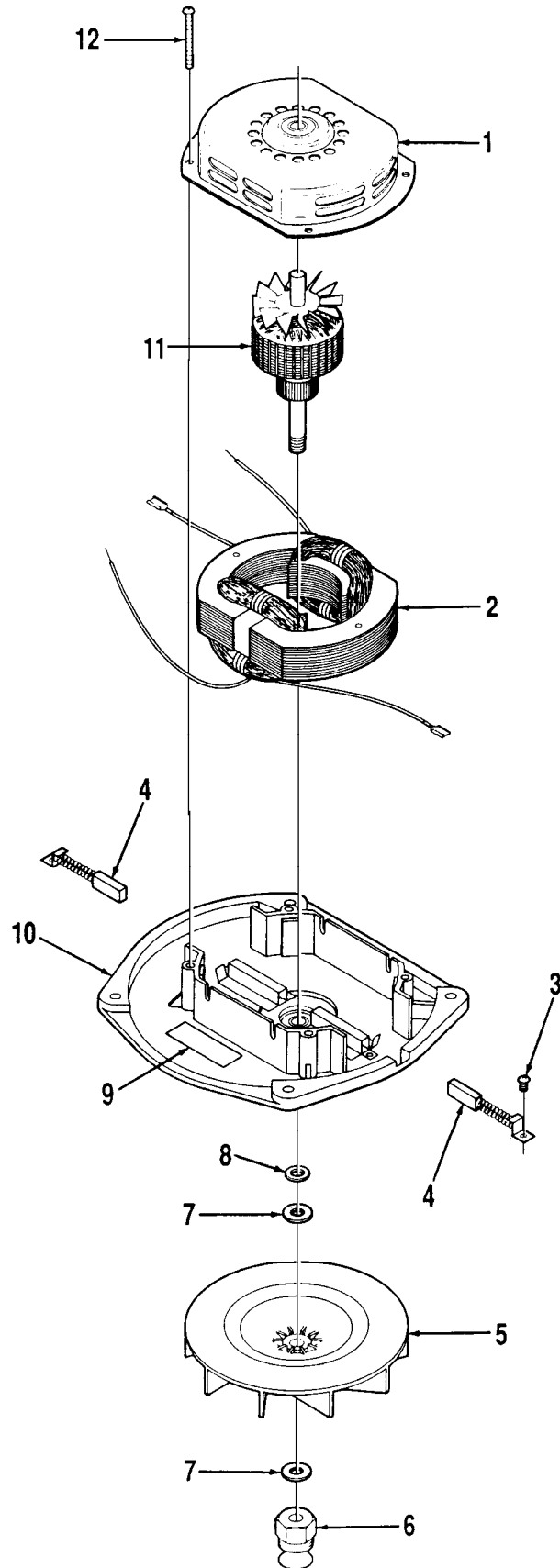


BASE ASSEMBLY (BEFORE SN 932324828)

Item	Ref. No.	Qty	Description
1	56703819	1	Hood and Nameplate
2	56703539	*	Strain Relief Bushing - pkg of 10
3	56703431	*	Screw - pkg of 10
4	56703440	*	Wire Nut - pkg of 10
5	56703551	1	Switch Button
6	56703563	1	Switch Clip
7	56630332	1	Switch, Push
8	56703423	1	Light Bulb
9	56703428	1	Motor Assembly
	56703480	2	** Carbon Brush
	56703487	1	** Fan
10	56703429	1	Motor Seal
11	56703425	1	Light Socket
12	56703444	1	Wire Clip
13	56703426	1	Light Shield
14	56703467	*	Spring - pkg of 6
15	56703820	1	Base Housing
	56703449	1	Right Cam (not shown)
	56703450	1	Left Cam (not shown)
	56703451	*	Cam Rivet - pkg of 10 (not shown)
16	56703821	1	Guard
17	56703537	2	Screw
18	56703446	1	Retainer
19	56703447	*	Screw - pkg of 10
20	56703823	*	Clip - pkg of 10
21	56703831	1	Rear Axle
22	56703824	2	Rear Wheel
23	56703825	*	Push Nut - pkg of 10
	56703535	1	Disturbulator Assembly (#24-27,30-34)
24	56703469	1	Bristle Strip Set
25	56703460	*	Clip - pkg of 10
26	56703470	2	Felt Washer
27	56703459	2	Cap Cover
28	56703463	1	Bottom Plate Assembly (#28,29)
29	56703462	1	Foam Tape
30	56703461	1	Shaft
31	56703404	*	Bearing Retainer - pkg of 2
32	56703472	*	Disturbulator Cap - pkg of 2
33	56703458	*	Nut - pkg of 10
34	56703457	1	Disturbulator Tube
35	56703456	1	Belt
36	56703421	1	Knob Assembly
37	56703420	*	Screw - pkg of 10
38	56703553	1	Front Axle
39	56703416	*	Front Wheel - pkg of 2
40	56703435	2	Wheel Cover
41	56703432	*	Screw & Clamp Set (#41,42) - pkg of 6
42	56703432	*	Screw & Clamp Set (#41,42) - pkg of 6
43	56703424	1	Lens
44	56703573	1	Bracket
45	56703443	1	Decal, Stripe
46	56703427	*	Screw - pkg of 10

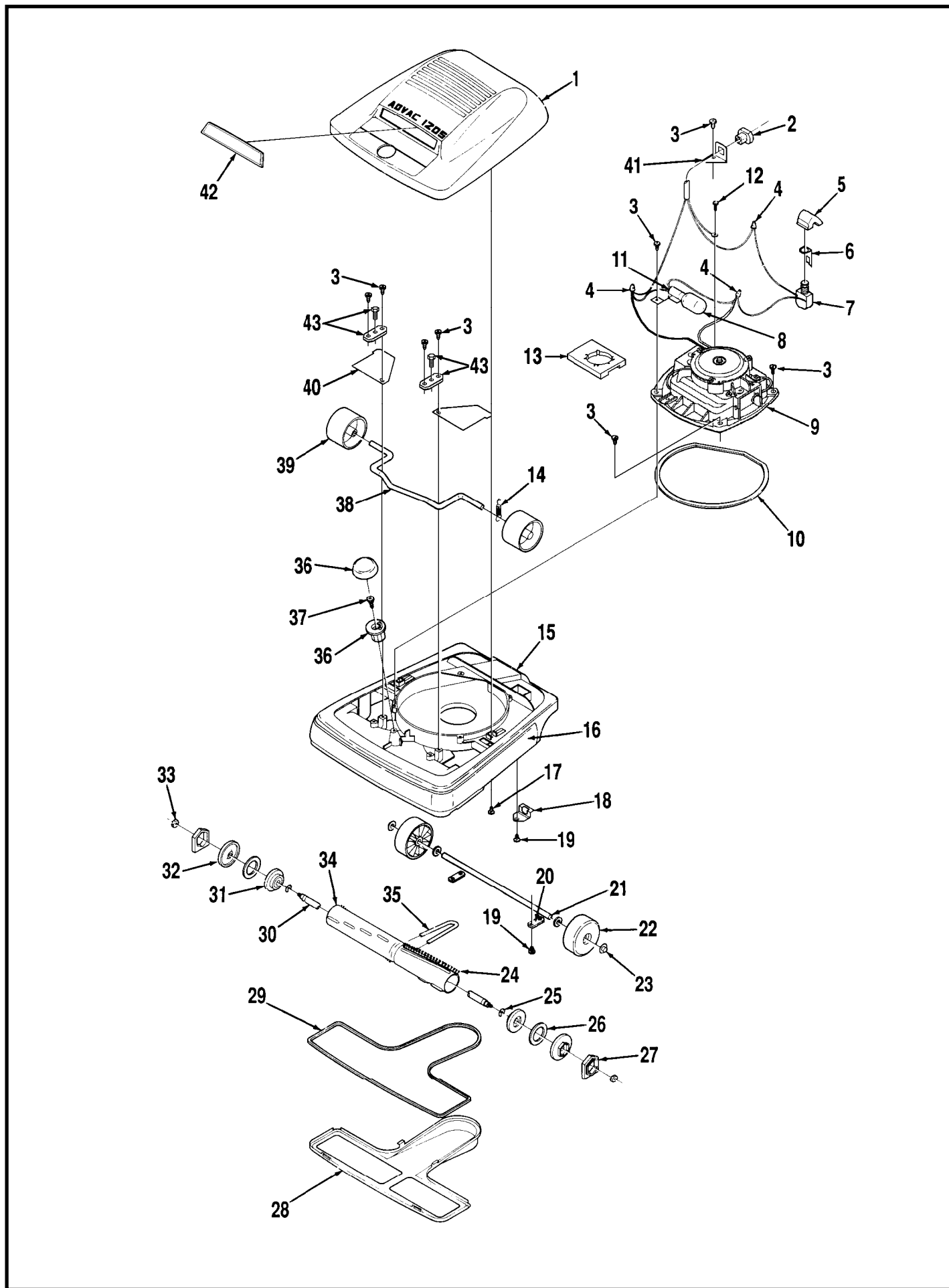
* = sold in package quantities only

** = repair parts for 56703428



MOTOR ASSEMBLY (BEFORE SN 932324828)

Item	Ref. No.	Qty	Description
	56703428	1	Motor Assembly (#1-11)
1	56703475	1	Motor Cover
	56703483	1	Bearing
2	56703478	1	Field Assembly
3	56703479	*	Screw - pkg of 10
4	56703480	2	Carbon Brush Assembly
5	56703487	1	Fan Blower
6	56703565	1	Drive Pulley
7	56703486	*	Washer - pkg of 10
8	56703485	*	Washer - pkg of 10
9	56703488	1	Decal
10	56703481	1	Motor Base Assembly
	56703482	1	Bearing Retainer Assembly
	56703483	1	Bearing
	56703484	*	Rivet - pkg of 10
11	56703476	1	Armature and Fan Assembly
	56703477	1	Fan
12	56703555	4	Torx Screw

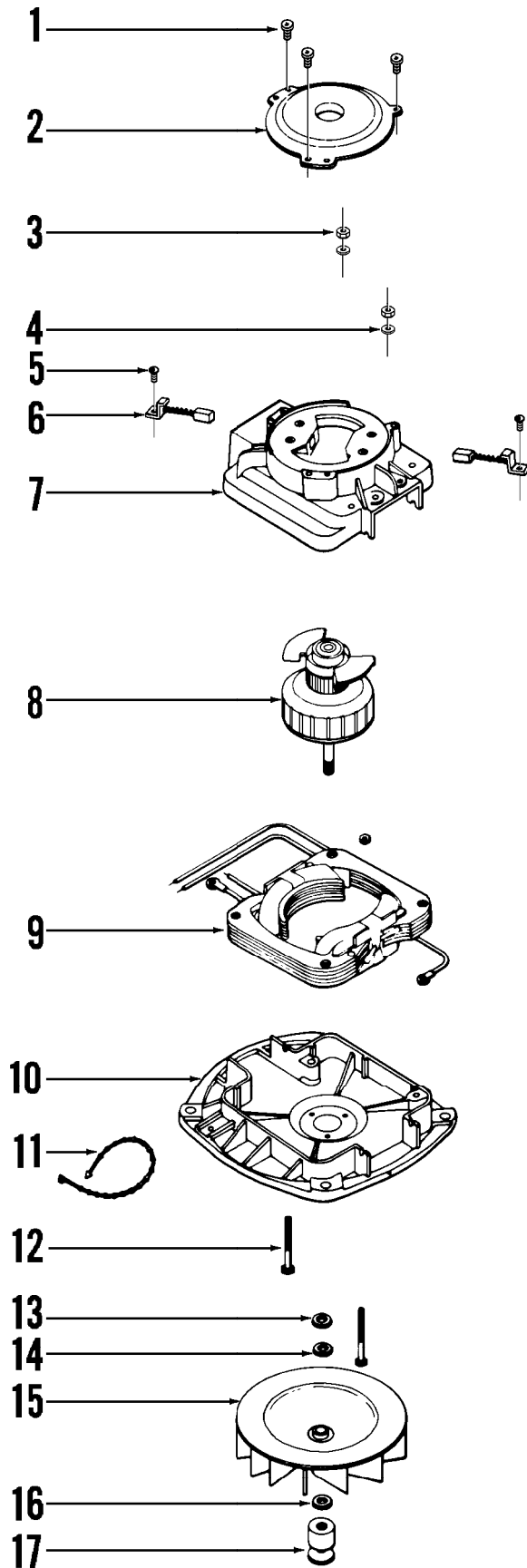


BASE ASSEMBLY (AFTER SN 932324827)

Item	Ref. No.	Qty	Description
1	56703413	1	Hood and Nameplate
2	56703539	*	Strain Relief Bushing - pkg of 10
3	56703431	*	Screw - pkg of 10
4	56703440	*	Wire Nut - pkg of 10
5	56703551	1	Switch Button
6	56703563	1	Switch Clip
7	56630332	1	Switch, Push
8	56703423	1	Light Bulb
9	56703589	1	Motor Assembly
	56703591	2	** Carbon Brush
	56703593	1	** Fan
10	56703429	1	Motor Seal
11	56703425	1	Light Socket
12	56703427	*	Screw - pkg of 10
13	56703595	1	Separator Assembly
14	56703467	*	Spring - pkg of 6
15	56703597	1	Base Housing
	56703449	1	Right Cam (not shown)
	56703450	1	Left Cam (not shown)
	56703451	*	Cam Rivet - pkg of 10 (not shown)
16	56703821	1	Guard
17	56703599	*	Screw - pkg of 10
18	56703446	1	Retainer
19	56703447	*	Screw - pkg of 10
20	56703823	*	Clip - pkg of 10
21	56703831	1	Rear Axle
22	56703824	2	Rear Wheel
23	56703825	*	Push Nut - pkg of 10
	56703535	1	Disturbulator Assembly (#24-27,30-34)
24	56703469	1	Bristle Strip Set
25	56703460	*	Clip - pkg of 10
26	56703470	2	Felt Washer
27	56703459	*	Cap Cover - pkg of 2
28	56703463	1	Bottom Plate Assembly (#28,29)
29	56703462	1	Foam Tape
30	56703461	1	Shaft
31	56703404	*	Bearing Retainer - pkg of 2
32	56703472	*	Disturbulator Cap - pkg of 2
33	56703458	*	Nut - pkg of 10
34	56703457	1	Disturbulator Tube
35	56703456	1	Belt
36	56703421	1	Grip and Knob Assembly
37	56703420	*	Screw - pkg of 10
38	56703553	1	Front Axle
39	56703416	*	Front Wheel - pkg of 2
40	56703435	2	Wheel Cover
41	56703573	1	Bracket
42	56703424	1	Lens
43	56703432	*	Screw & Clamp Set - pkg of 6

* = sold in package quantities only

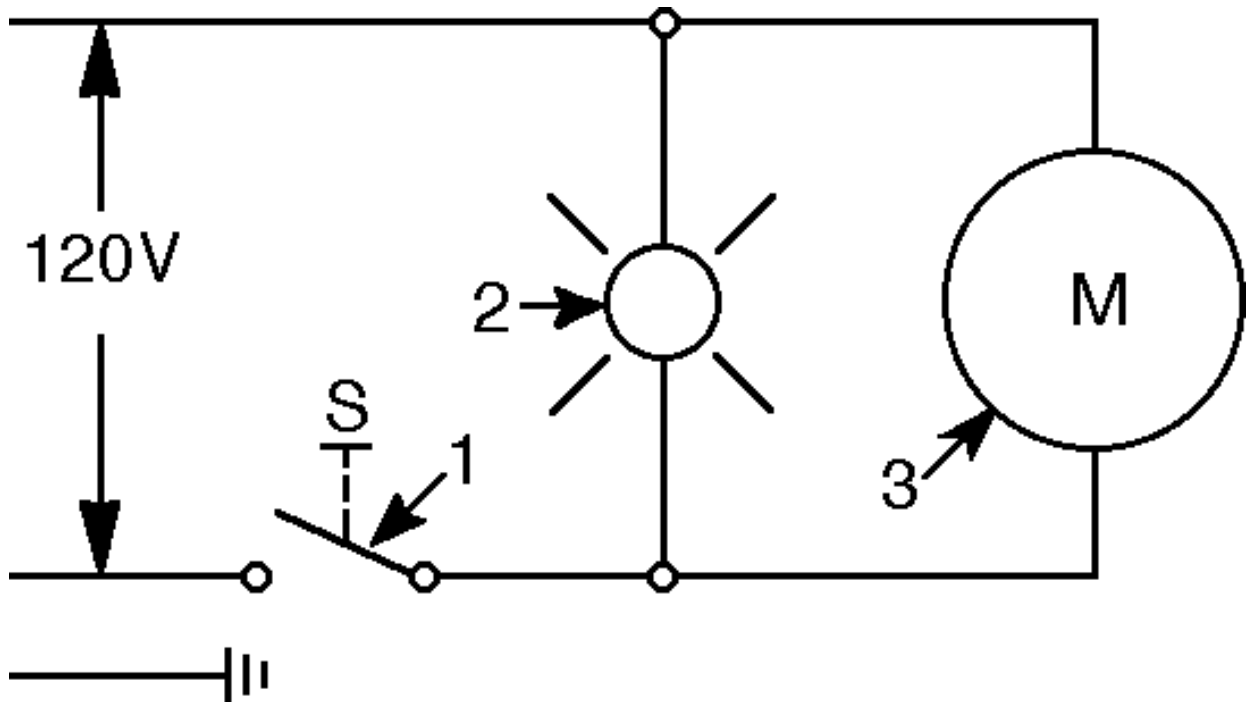
** = repair parts for 56703589



MOTOR ASSEMBLY (AFTER SN 932324827)

Item	Ref. No.	Qty	Description
	56703589	1	Motor Assembly (#1-11)
1	56703458	*	Retainer Screw - pkg of 10
2	56703368	1	Retainer Assembly
3	56703625	*	Hex Nut - pkg of 10
4	56703380	*	Lock Washer - pkg of 10
5	56703392	*	Brush Screw - pkg of 10
6	56703601	2	Carbon Brush Assembly
7	56703603	1	Motor Cover
8	56703605	1	Arm Fan and Bearing Assembly
	56703483	*	Bearing only - pkg of 5
	56703607	1	Fan only
9	56703609	1	Field Assembly
10	56703611	1	Motor Base Assembly
	56703483	*	Bearing - pkg of 5
	56703484	*	Rivet - pkg of 10
11	56703613	1	Tie Fastener
12	56703615	*	Orlo Thread Screw - pkg of 10
13	56703485	*	Washer - pkg of 10
14	56703486	*	Fan Washer - pkg of 10
15	56703593	1	Fan
16	56703486	*	Fan Washer - pkg of 10
17	56703329	1	Pulley

* = sold in package quantities only



WIRING DIAGRAM

Item	Ref. No.	Qty	Description
1	56630332	1	Switch, Push
2	56703425	1	Light Socket
	56703423	1	Light Bulb
3	56703428	1	Motor Assembly before serial number 932324828
	56703589	1	Motor Assembly after serial number 932324827



Nilfisk-Advance, Inc.
14600 21st Avenue North
Plymouth, MN, 55447-3408
www.nilfisk-advance.com
Phone: 800-989-2235
Fax: 800-989-6566
©2000 Nilfisk-Advance, Inc.,
Plymouth, MN 55447-3408
Printed in the U.S.A.