



Electronic Service Manuals

This electronic document is provided as a service to our customers. We do not create the contents of the information contained in this document. Should you have detailed questions pertaining to the information contained in this document, you may contact Michco, or the manufacturer which provided the original information in this electronic deliverable. Michco's only part in this electronic deliverable was the electronic assembly process.

You may contact Michco through the following methods:
Phone (517) 484-9312 or (800) 331-3339 MI, OH, IN only
2011 N. High St. -- Lansing, Michigan -- 48906
Fax: (517) 484-9836
Email: CustServ@Michco.com
Web site: www.Michco.Com
Parts Web site: www.FloorMachineParts.Com

Order Parts on Line at:
www.FloorMachineParts.Com

Directly to Parts & Service:
By Email: **Shop@Michco.com**
By Fax: (517) 702-2041
By Voice: Use numbers above.

Serving the Cleaning Industry Since 1922

Notice: All copyrighted material remains property of original owners, all trademarks are property of respective owners. Manuals are subject to Manufacturer's reproduction limitations. Originals or reproductions were provided by manufacturers through a request. We make no warranty as to the correctness of information provided in this document and you assume all risk.

PARTS LIST

Advance

Tip and Pour™

Models TP120, TP120-5, TP120-H, TP120H-5

This parts list is for machines after serial number 157941



**Nilfisk
Advance**

setting standards

revised 11/00 Form Number 56042030

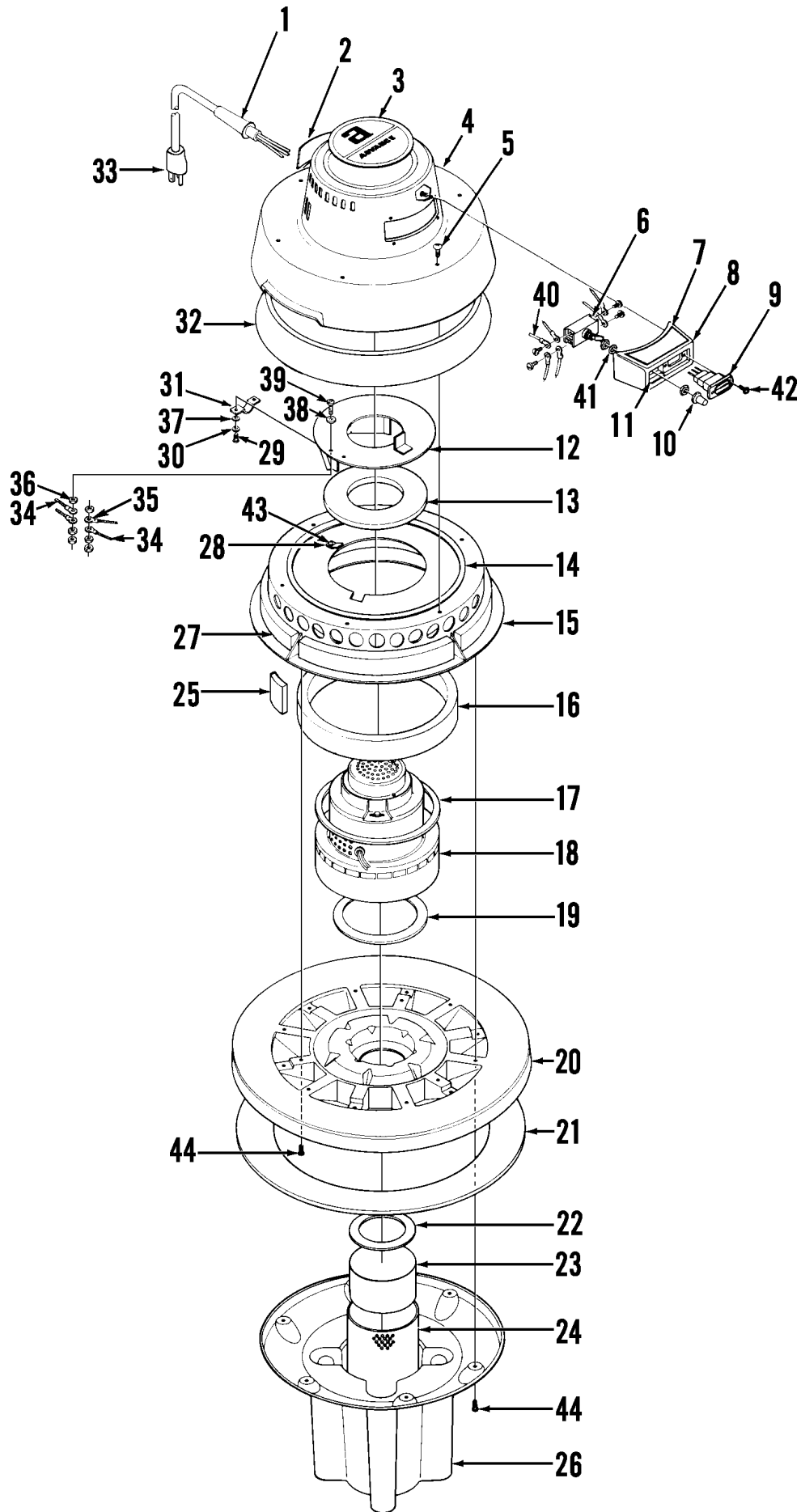
TABLE OF CONTENTS

DESCRIPTION	PAGE
VACUUM HEAD ASSEMBLY	1-2
TANK AND BASE ASSEMBLY	3-4
WIRING DIAGRAMS	5
VACUUM MOTOR	6
H.E.P.A. POWERHEAD ASSEMBLY	7-8

WHEN ORDERING PARTS

- * Use the 8 digit numbers from the "Ref. No." columns in this parts list.
- * Specify the model and serial number of the machine.
- * Use the space below to record the model and serial number for future reference.

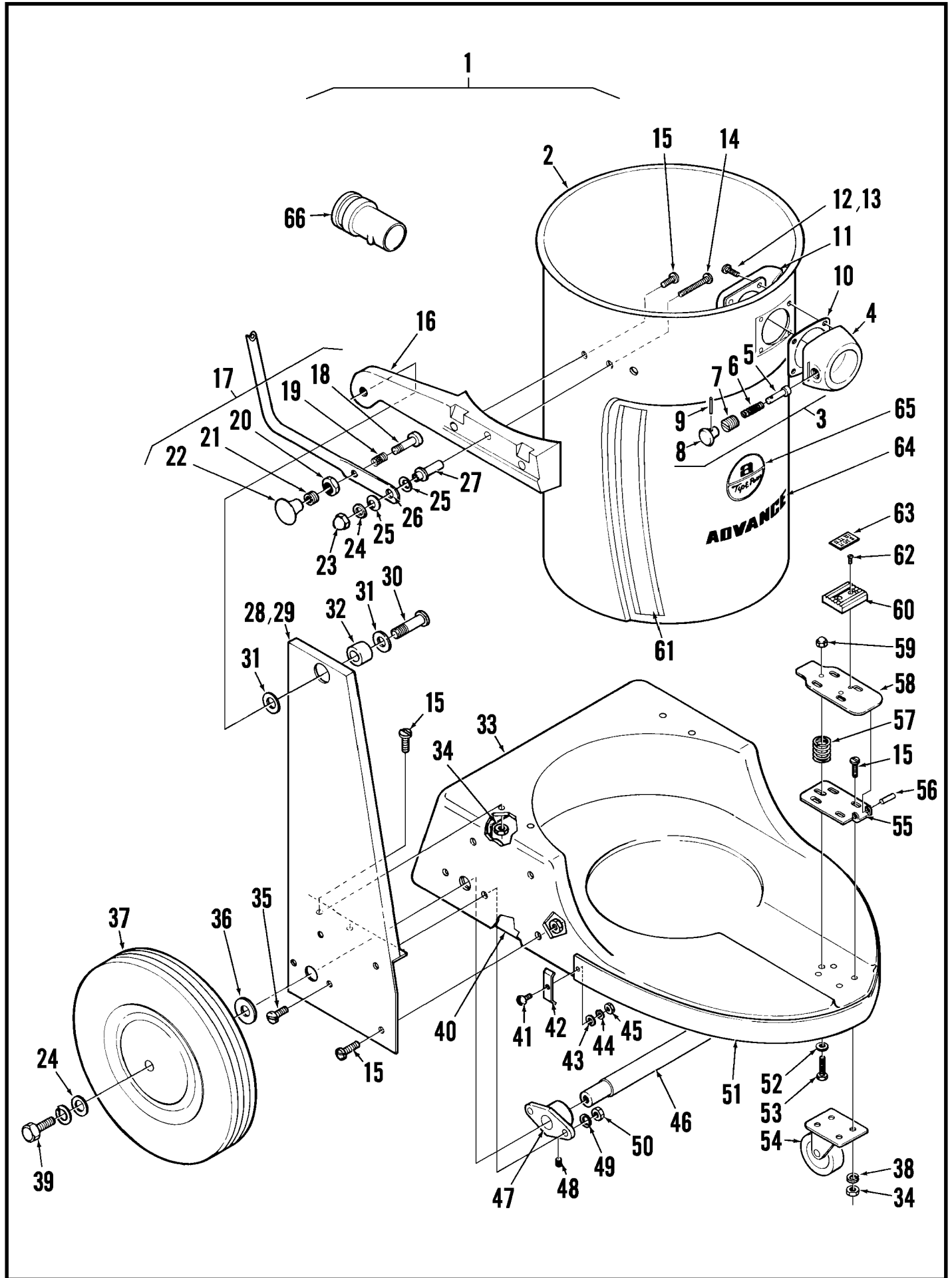
Model _____ Serial No. _____



VACUUM HEAD ASSEMBLY

Item	Ref. No.	Qty	Description	Item	Ref. No.	Qty	Description
	56205803	1	Vacuum Head Assembly 115V	27	56249447	4	Foam
	56205775	1	Vacuum Head Assembly 230V	28	56249559	2	Tab
1	56301396	1	Strain Relief 115V	29	56002173	2	#8-32 x .63 Screw
	56323046	1	Strain Relief 230V	30	56002140	2	#8 Shakeproof Washer
2	56015084	1	Decal, Warning 115V	31	56300542	1	Clamp
	56014327	1	Decal, Warning 230V	32	56205651	1	Foam
3	56014170	1	Decal, Advance 115V	33	56249638	1	Power Cord 115V
	56015076	1	Decal, Warning 230V		56301309	1	Power Cord 230V
4	56205794	1	Vacuum Head Cover 115V	34	56249615	2	Wire Assembly
	56205825	1	Vacuum Head Cover 230V	35	56325314	2	Terminal Ring #10
5	56002683	6	#10-24 x .5 Screw 115V	36	56002349	14	#10-24 Nut
	56570226	6	Screw 230V	37	56001940	2	#8 Washer
6	56200340	1	Toggle Switch 115V	38	56002011	15	#10 Shakeproof Washer
	56301636	1	Toggle Switch 230V	39	56002124	3	#10-24 x .62 Pan Head Screw
7	56014493	1	Decal, Hydro Vac 115V	40	56311229	1	Terminal Ring #6
8	56205795	1	Console	41	56001991	1	Shakeproof Washer
9	56209826	1	Receptacle 115V	42	56570514	2	#6 x .375 Screw
	56209983	1	Receptacle Cover 230V	43	56002519	2	#10-24 x .375 Screw
10	56756514	1	Boot	44	56002683	12	#10-24 x .5 Screw 115V
11	56023224	1	Decal, On-Off		56209488	12	#10-24 x .43 Screw 230V
12	56249612	1	Ring 115V		56478246	3	Wire Tie (9 on 230V)
	56250555	1	Ring 230V	*	56183523	1	Terminal Block 230V
13	56249533	1	Foam	*	56250564	2	Wire Assembly 230V
14	56249648	1	Gasket	*	56249530	1	RFI Filter 230V
15	56205776	1	Vacuum Motor Ring	*	56250530	1	Choke Coil 230V
16	56249535	1	Foam	*	56331027	1	Grn/Yel Wire Assembly
17	56249656	1	Gasket	*	56331029	1	Brown Wire Assembly
18	56249525	1	Vacuum Motor 115V	*	56331031	1	Blue Wire Assembly
	56249526	1	Vacuum Motor 230V	*	56900134	1	Symbol "L"
19	56249642	1	Gasket	*	56900135	1	Symbol Ground
20	56205807	1	Base Cover	*	56900231	1	Symbol "N"
21	56250099	1	Gasket	*	56014119	1	Decal, Ground Symbol
22	56249646	1	Gasket				
23	56209571	1	Float				
24	56209566	1	Shield				
25	56205652	6	Foam				
26	56205809	1	Float Housing				

* = Not Shown



TANK AND BASE ASSEMBLY

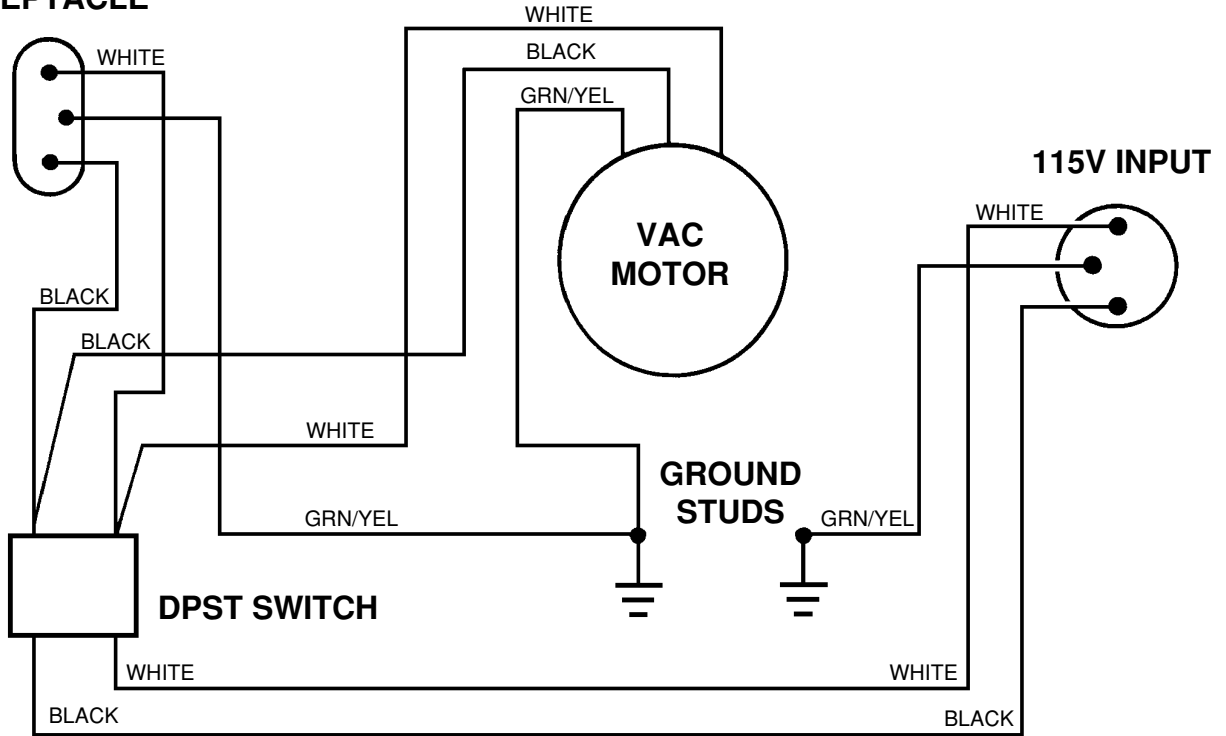
Item	Ref. No.	Qty	Description	Item	Ref. No.	Qty	Description
1	56205749	1	Tank and Base Assembly	36	56001879	2	1/2 Flat Washer
2	56250543	1	Tank	37	56201774	2	Wheel
3	56205821	1	Connector Assembly (#4-9)	38	56001907	4	1/4 Lock Washer
4	56205854	1	Connector	39	56002513	2	1/4-20 x .5 Screw
5	56201391	1	Pin	40	56205766	1	Brace
6	56201448	1	Spring	41	56002002	2	#6-32 x .75 Screw
7	56201383	1	Socket	42	56244846	2	Clip
8	56201405	1	Knob	43	56002006	2	#6 Flat Washer
9	56201 472	1	Pin	44	56001839	2	#6 Lock Washer
10	56201 390	1	Gasket	45	56002061	2	#6-32 Nut
11	56207089	1	Deflector	46	56578282	1	Axle
12	56209521	3	#10-16 x 1 Screw	47	56578316	2	Axle Block
13	56209519	1	#10-16 x .75 Screw	48	56001957	2	1/4-20 x .375 Set Screw
14	56002108	2	1/4-20 x 2 Screw	49	56001981	5	#10 Lock Washer
15	56002066	20	1/4-20 x .62 Screw	50	56002349	4	#10-24 Nut
16	56205767	1	Left Handle Mount	51	56578260	1	Bumper
*	56205773	1	Right Handle Mount	52	56001954	1	#10 Flat Washer
17	56578214	1	Lock Assembly (#18-22)	53	56002231	1	#10-24 x 1.5 Screw
18	56578226	1	Pin	54	56206725	1	Caster
19	56578222	1	Spring	55	56578342	1	Bracket
20	56578218	1	Nut	56	56002781	1	Spring Pin
21	5657821 6	1	Socket	57	56228142	1	Spring
22	56362778	1	Knob	58	56578330	1	Latch
23	56002062	2	1/4-20 Acorn Nut	59	56209720	1	Acorn Nut
24	56002098	6	1/4 Flat Washer	60	56365000	1	Rubber Pad
25	56151041	2	Spring Washer	61	56014563	1	Decal, Right
26	56250542	1	Handle		56014564	1	Decal, Left
27	56578244	2	Bushing	62	56002521	2	1/4-20 x .75 Screw
28	56205777	1	Right Support	63	56057202	1	Decal, Release
29	56205763	1	Left Support	64	56014046	1	Decal, Advance
30	56001858	2	3/8-16 x 1.25 Screw	65	56015326	1	Decal, Logo
31	56002063	4	3/8 Flat Washer	66	56201820	1	Adapter, 1-1/2" (not included)
32	56578242	2	Bushing				
33	56205756	1	Base Housing				
34	56001976	16	1/4-20 Nut				
35	56002124	4	#10-24 x .62 Screw				

* = Not Shown

WIRING DIAGRAMS

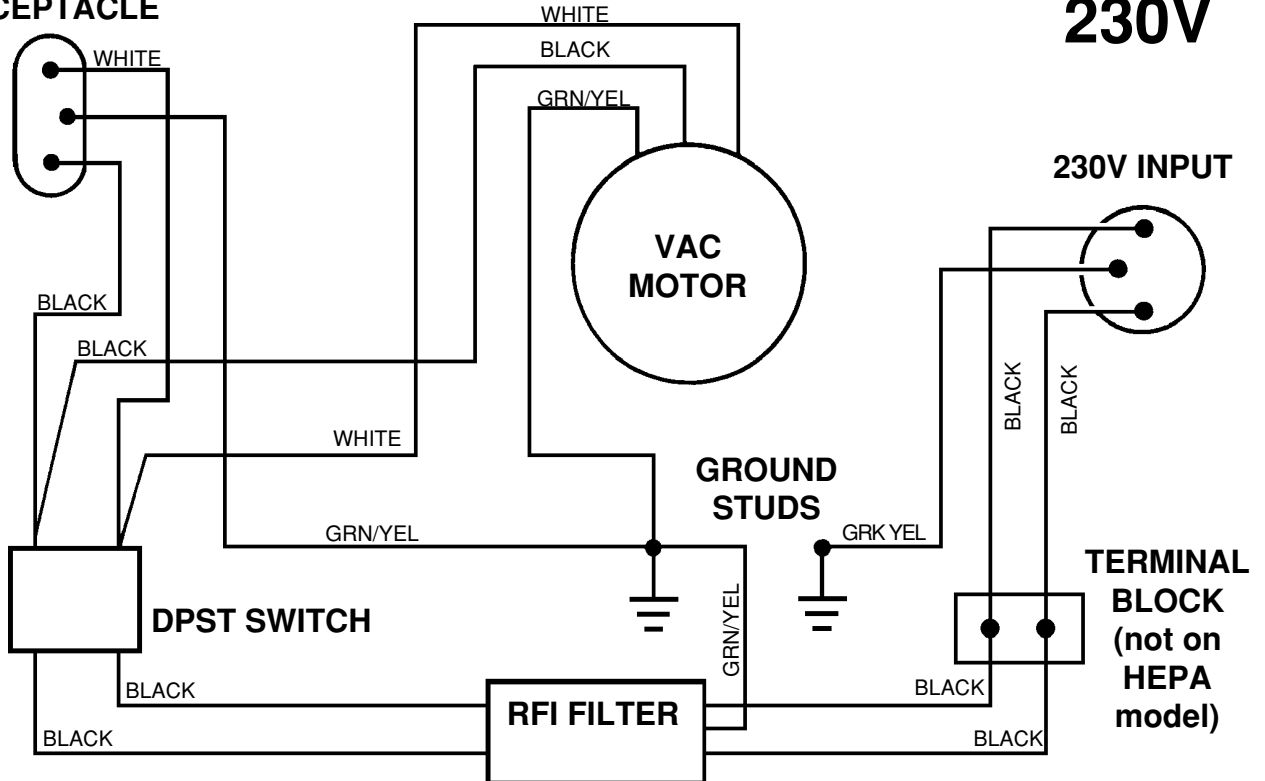
115V

RECEPTACLE



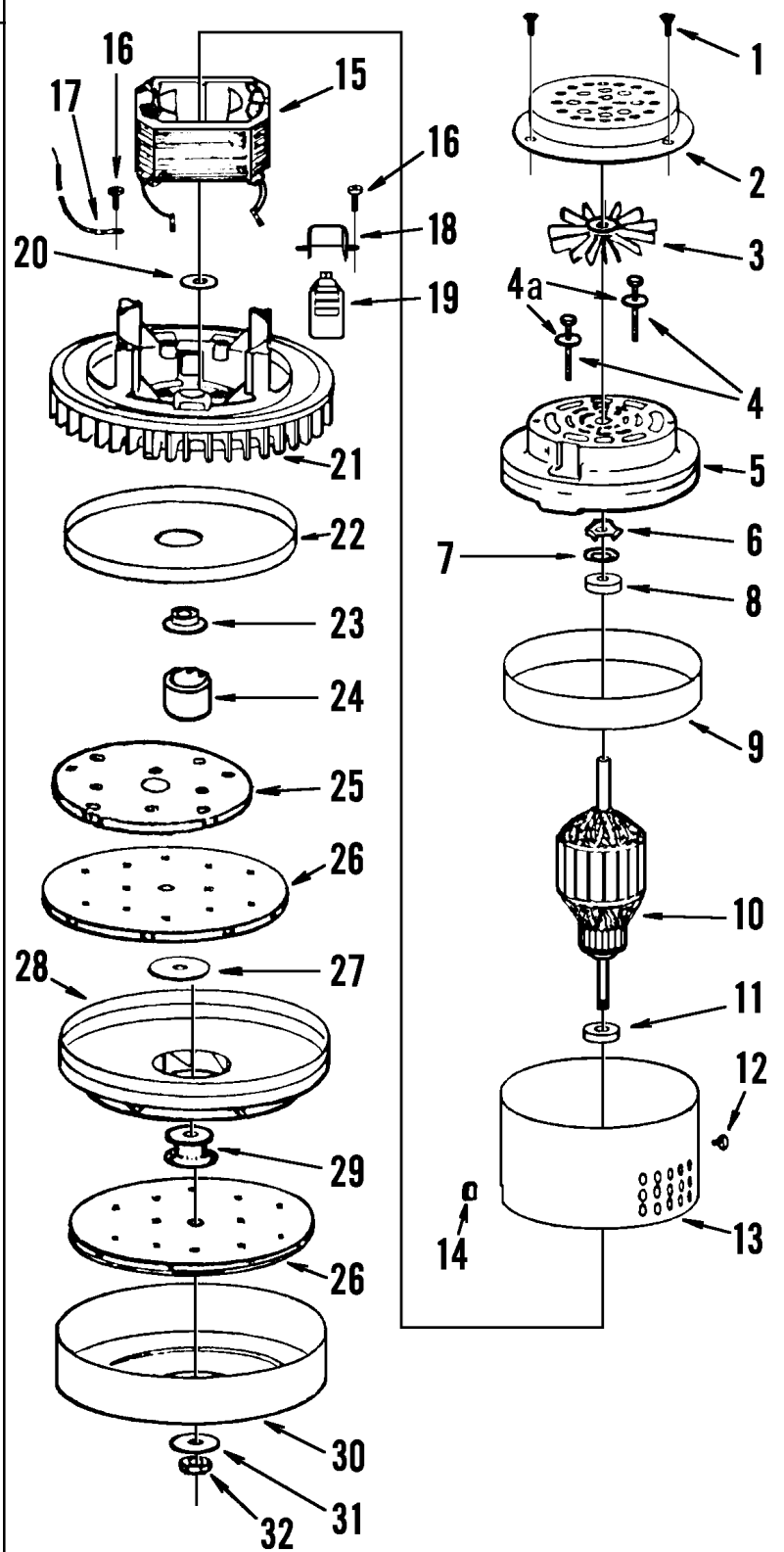
230V

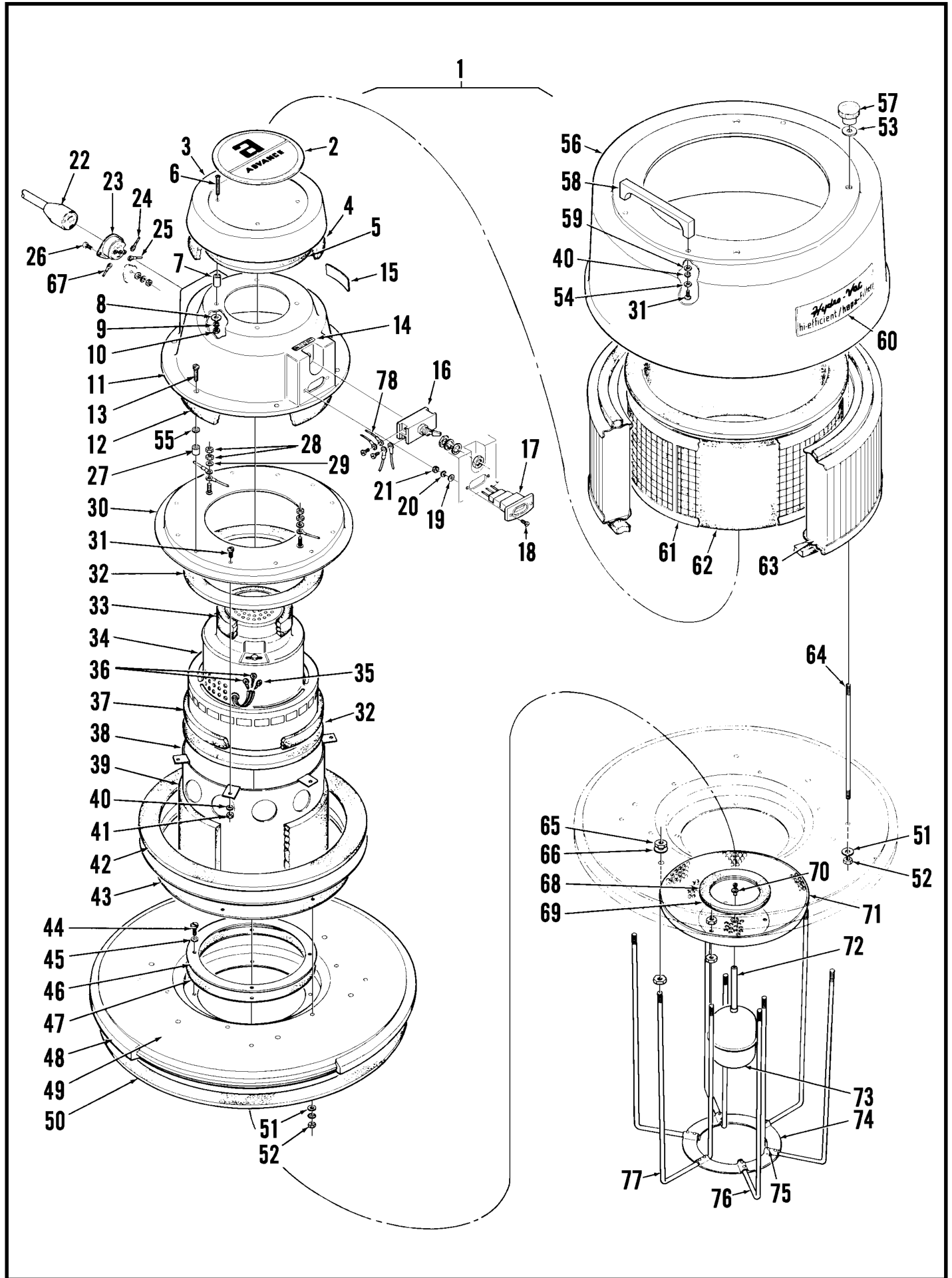
RECEPTACLE



VACUUM MOTOR

Item	Ref. No.	Qty	Description
1		2	Screw
2		1	Cover
3	56249729	1	Fan
4		2	Screw
4a		2	Washer
5		1	Bracket
6	56202843	1	Bowed Washer
7	56249735	1	Disc
8	56249737	1	Bearing
9		1	Air Vent Ring
10	56249743	1	Armature 115 Volt
		1	Armature 220 Volt
11	56228051	1	Bearing
12		1	Screw
13		1	Band
14		1	Snap Bushing
15		1	Field
16		5	Screw
17		1	Lead & Terminal
18	56208132	2	Clamp
19	56207403	2	Brush Mechanism (Set)
20		1	Neoprene Washer
21		1	Fan End Bracket
22	56202703	1	Shell
23	56260162	1	Spacer
24	56249751	1	Slinger
25	56249753	1	Fan
26	56202592	2	Fan
27		1	Washer
28	56249755	1	Stationary Fan
29	56203516	1	Spacer
30	56249757	1	Fan Shell
31	56203432	1	Washer
32		1	Nut





H.E.P.A. POWERHEAD ASSEMBLY

Item	Ref. No.	Qty	Description	Item	Ref. No.	Qty	Description
1	56207007	1	HEPA Powerhead Assy 115V	43	56207102	1	Gasket
	56207008	1	HEPA Powerhead Assy 230V	44		4	1/4-20 x .375 Screw
2	56015076	1	Decal, Advance	45		10	1/4 Lock Washer
3	56207121	1	Motor Cover	46	56207019	1	Shut-Off Plate
4	56204072	1	Gasket	47	56207122	1	Gasket
5	56204099	1	Liner	48	56207123	1	Bumper
6		4	#6-32 x 1.25 Screw	49	56207021	1	Tank Cover
7	56200239	4	Bushing	50	56250099	1	Gasket
8		6	#6 Flat Washer	51		10	1/4 Flat Washer
9		6	#6 Lock Washer	52		10	1/4-20 Nut
10		6	#6-32 Nut	53	56380875	4	Fiber Washer
11	56207009	1	Cover 115V	54	56209596	4	Rubber Washer
	56207150	1	Cover 230V	55	56200190	6	Fiber Washer
12	56207038	2	Foam	56	56207083	1	Cover
13		10	#10-24 x .75 Screw	57	56207088	4	Knob
14	56023224	1	Decal, On-Off	58	56300101	4	Handle
15	56015084	1	Decal, Warning 115V	59		4	#10 Flat Washer
	56014327	1	Decal, Warning 230V	60	56014173	1	Decal 115V
16	56200340	1	Toggle Switch 115V		56014578	1	Decal 230V
	56301636	1	Toggle Switch 230V	61	56207023	1	Prefilter Weldment
17	56205752	1	Receptacle 115V	62	56207048	1	Prefilter
	56207162	1	Receptacle Cover 230V	63	56207014	1	HEPA Filter
18		2	#4-40 x .62 Screw	64	56207046	4	Stud
19		2	#4 Flat Washer	65		24	5/16-18 Nut
20		2	#4 Lock Washer	66		12	5/16 Flat Washer
21		2	#4-40 Nut	67	56207096	1	Green Wire Assembly
22	56207066	1	Power Cord 115V **	68	56249646	1	Gasket
	56207084	1	Power Cord 230V **	69	56200522	1	Washer
23	56207064	1	Twist-Lok Inlet 115V	70	56200077	1	Outer Eyelet
	56180272	1	Connector Inlet 230V TSB 741	71	56200492	1	Suds Shield
24	56207114	1	White Wire Assembly	72	56200584	1	Stem
25	56207094	1	Black Wire Assembly	73	56200603	1	Float
26		2	#6-32 x .5 Screw	74	56200670	1	Ring
27	56200123	6	Bushing	75	56200673	12	Rivet
28		4	#8-32 Nut	76	56200654	3	Rod
29		2	#8 Flat Washer	77	56200646	3	Rod
30	56207015	1	Top Motor Mount	78	56209900	1	Grn/Yel Wire Assembly
31		6	#10-24 x .62 Screw	*	56249530	1	RFI Filter 230V
32	56207010	2	Gasket	*	56249532	1	Choke Coil 230V
33	56206020	1	Gasket	*	56171490	2	Receptacle Tab 230V
34	56249525	1	Vacuum Motor 115V	*	56209897	2	Wire Assembly 230V
	56249526	1	Vacuum Motor 230V	*	56014119	2	Decal, Ground 230V
35	56207110	1	#8 Terminal Ring	*	56325219	2	Cable Tie 230V
36	56311229	2	#6 Terminal Ring				
37	56449227	1	Gasket, 26 inches				
38	56207017	1	Motor Mount				
39	56207078	1	Foam				
40		10	#10 Lock Washer				
41		6	#10-24 Nut				
42	56207050	2	Prefilter Gasket				

* = Not Shown
 ** = Not Included



Nilfisk-Advance, Inc.
14600 21st Avenue North
Plymouth, MN, 55447-3408
www.nilfisk-advance.com
Phone: 800-989-2235
Fax: 800-989-6566
©2000 Nilfisk-Advance, Inc.,
Plymouth, MN 55447-3408
Printed in the U.S.A.