



Electronic Service Manuals

This electronic document is provided as a service to our customers. We do not create the contents of the information contained in this document. Should you have detailed questions pertaining to the information contained in this document, you may contact Michco, or the manufacturer which provided the original information in this electronic deliverable. Michco's only part in this electronic deliverable was the electronic assembly process.

You may contact Michco through the following methods:
Phone (517) 484-9312 or (800) 331-3339 MI, OH, IN only
2011 N. High St. -- Lansing, Michigan -- 48906
Fax: (517) 484-9836
Email: CustServ@Michco.com
Web site: www.Michco.Com
Parts Web site: www.FloorMachineParts.Com

Order Parts on Line at:
www.FloorMachineParts.Com

Directly to Parts & Service:
By Email: **Shop@Michco.com**
By Fax: (517) 702-2041
By Voice: Use numbers above.

Serving the Cleaning Industry Since 1922

Notice: All copyrighted material remains property of original owners, all trademarks are property of respective owners. Manuals are subject to Manufacturer's reproduction limitations. Originals or reproductions were provided by manufacturers through a request. We make no warranty as to the correctness of information provided in this document and you assume all risk.

Sprite Battery Air-Scoop™ 8/12



PARTS LIST

Advance MODELS 56209008, 56209000

This parts list is for machines after serial number 0551564

All models covered in this manual are OBSOLETE



Advance

by Nilfisk-Advance

4/93 revised 11/01 Form Number 56042278

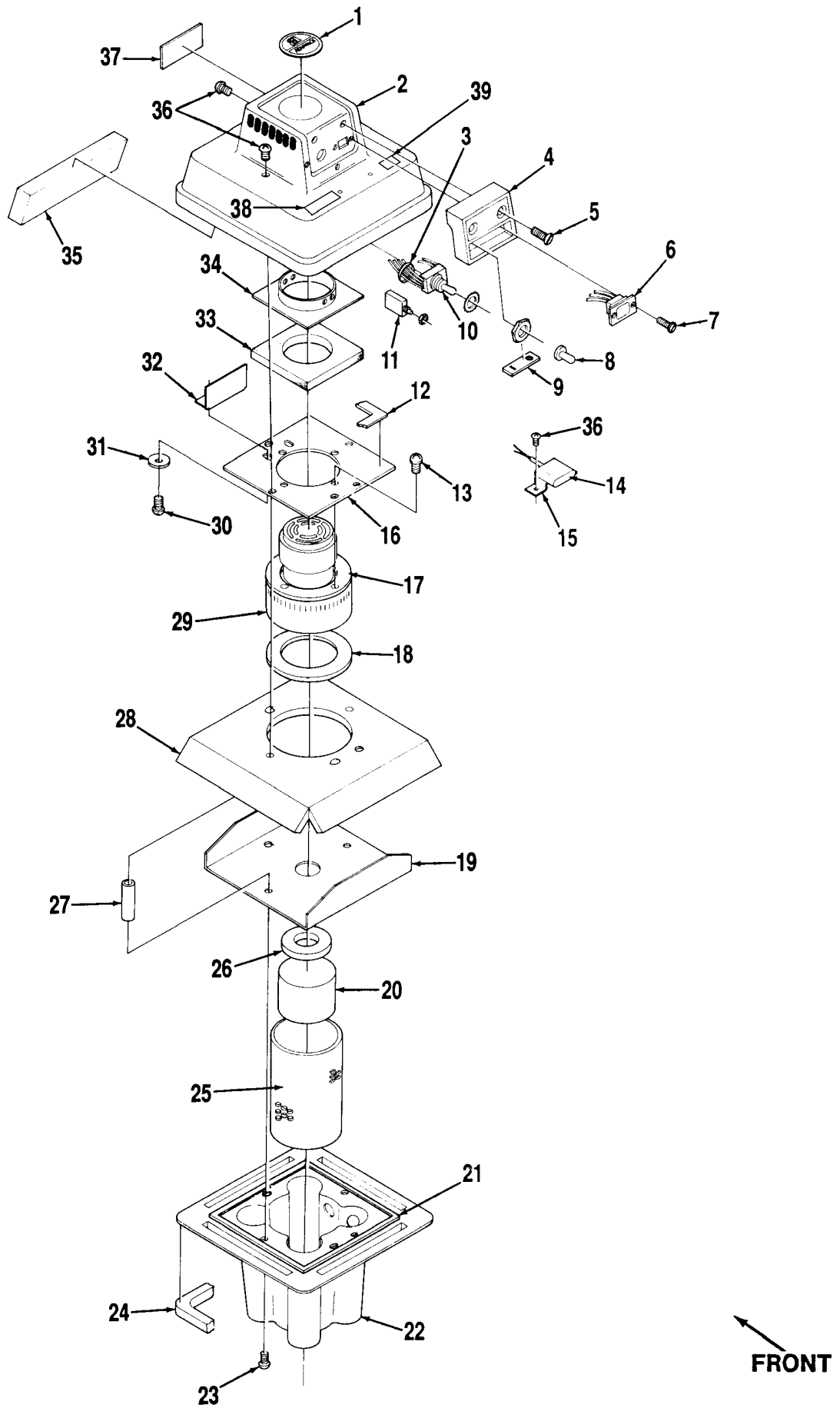
TABLE OF CONTENTS

<u>DESCRIPTION</u>	<u>PAGE</u>
Power Head	1-2
Tank Assembly	3-4
Squeegee Assembly	5-6
Wiring Diagram	7

WHEN ORDERING PARTS

- * Use the 8 digit numbers from the "Part No." columns in this parts list.
- * Specify the model and serial number of the machine.
- * Use the space below to record the model and serial number for future reference.

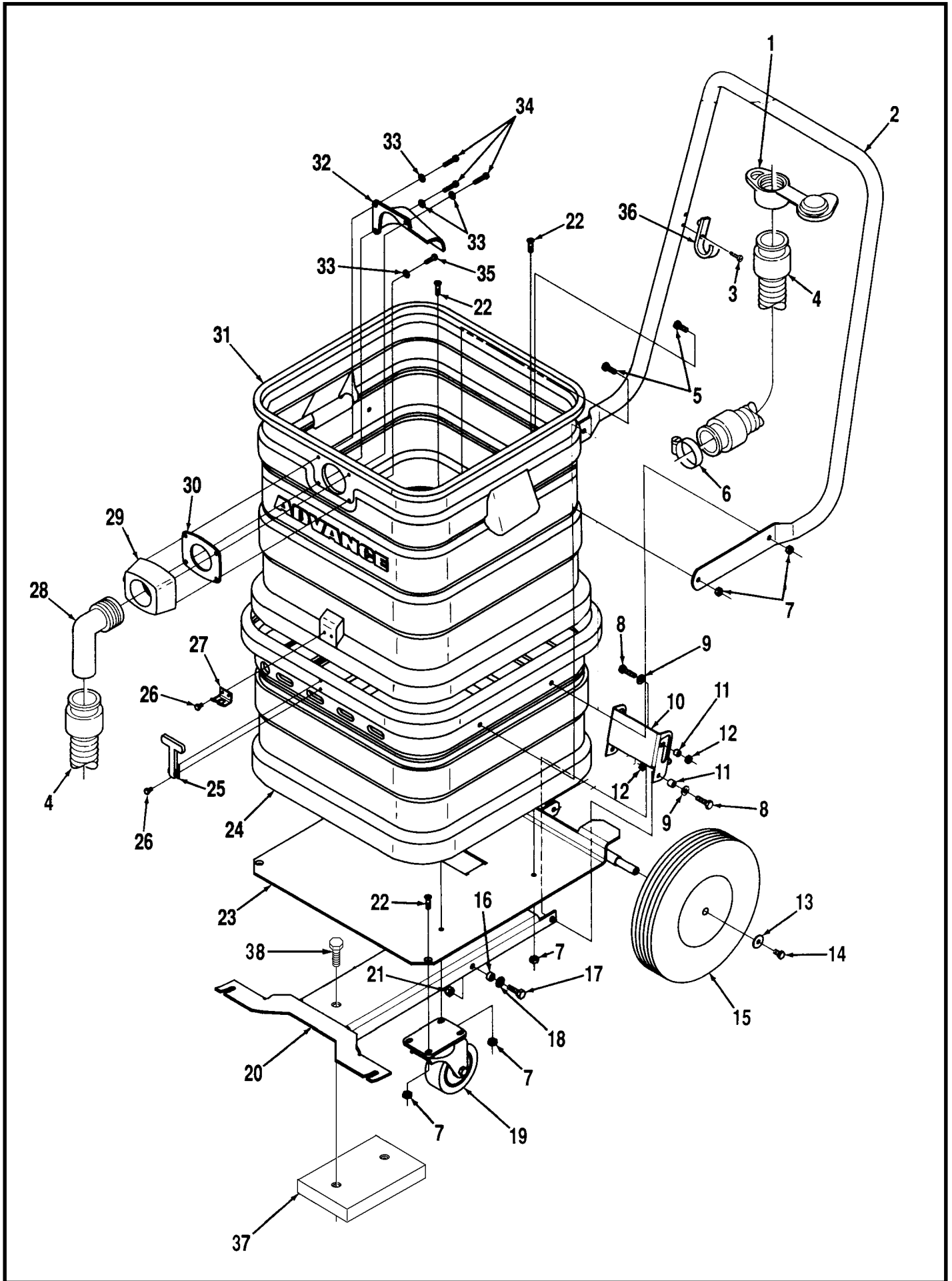
Model _____ Serial No. _____



POWER HEAD

Item	Part No.	Qty	Description
	56209001	1	Power Head Assy (#1-37)
1	56015326	1	Decal, Logo
2	56209002	1	Shroud
3	56325219	4	Cable Tie
4	56209027	1	Console
5	56002495	2	#10-24 x 1 1/2 Screw
*	56002768	2	#10-24 Nyloc Nut
6	56372089	1	Battery Condition Indicator
7	56209828	2	Screw
*	56002244	2	#8-32 Nyloc Nut
8	56756514	1	Boot
9	56023224	1	Decal, On/Off
10	56200336	1	Switch
11	56395454	1	Circuit Breaker 20 Amp
12	56200754	36"	Gasket (38.5 cm)
13	56002967	4	#10-24 x 5/8 Screw
14	56209035	1	Power Head Connector
15	56209021	1	Bracket
16	56209012	1	Plate
17	56209325	1	Gasket
18	56209326	1	Gasket
19	56209766	1	Cover Plate
20	56209571	1	Float
21	56385248	60"	Gasket (1.5 m)
22	56205845	1	Float Housing
23	56209491	5	Screw
24	56209763	1	Gasket
25	56209566	1	Perforated Shield
26	56206128	1	Gasket
27	56209440	5	Spacer
28	56209013	1	Foam
29	56209037	1	Vacuum Motor 24VDC
*	56503003	1	Carbon Brush Set For 56209037
30	56001818	2	#8-32 x 3/8 Screw
31	56203874	2	Washer
32	56209018	1	Baffle
33	56209816	1	Foam
34	56209003	1	Ring Plate
35	56209461	1	Filter
36	56570220	6	Screw
37	56014148	1	Decal, Sprite
38	56015084	1	Decal, Warning 12 gal
	56017023	1	Decal, Warning 8 gal (Japan)
39	56015633	1	Decal, Battery Charging

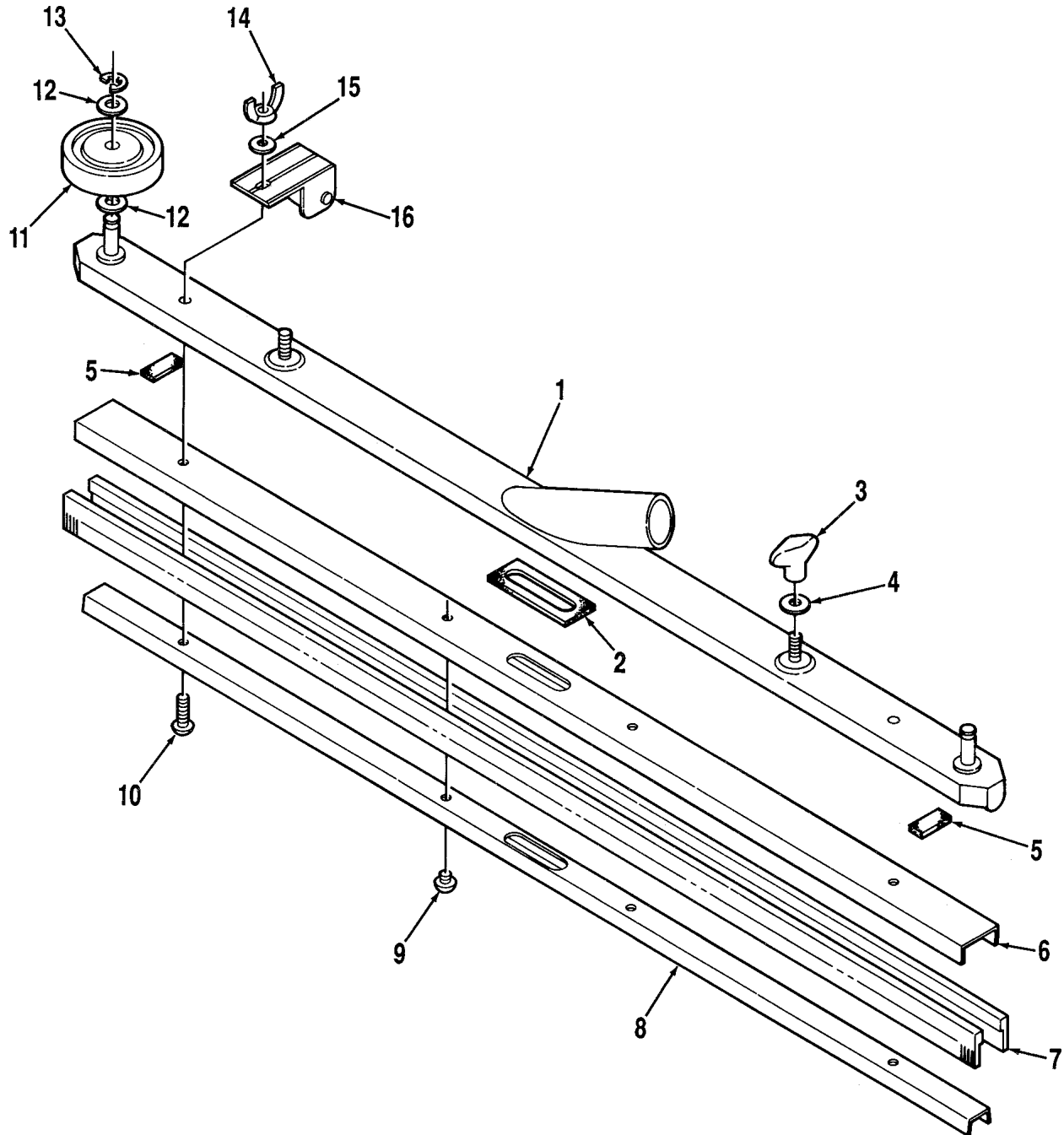
* = Not Shown



TANK ASSEMBLY

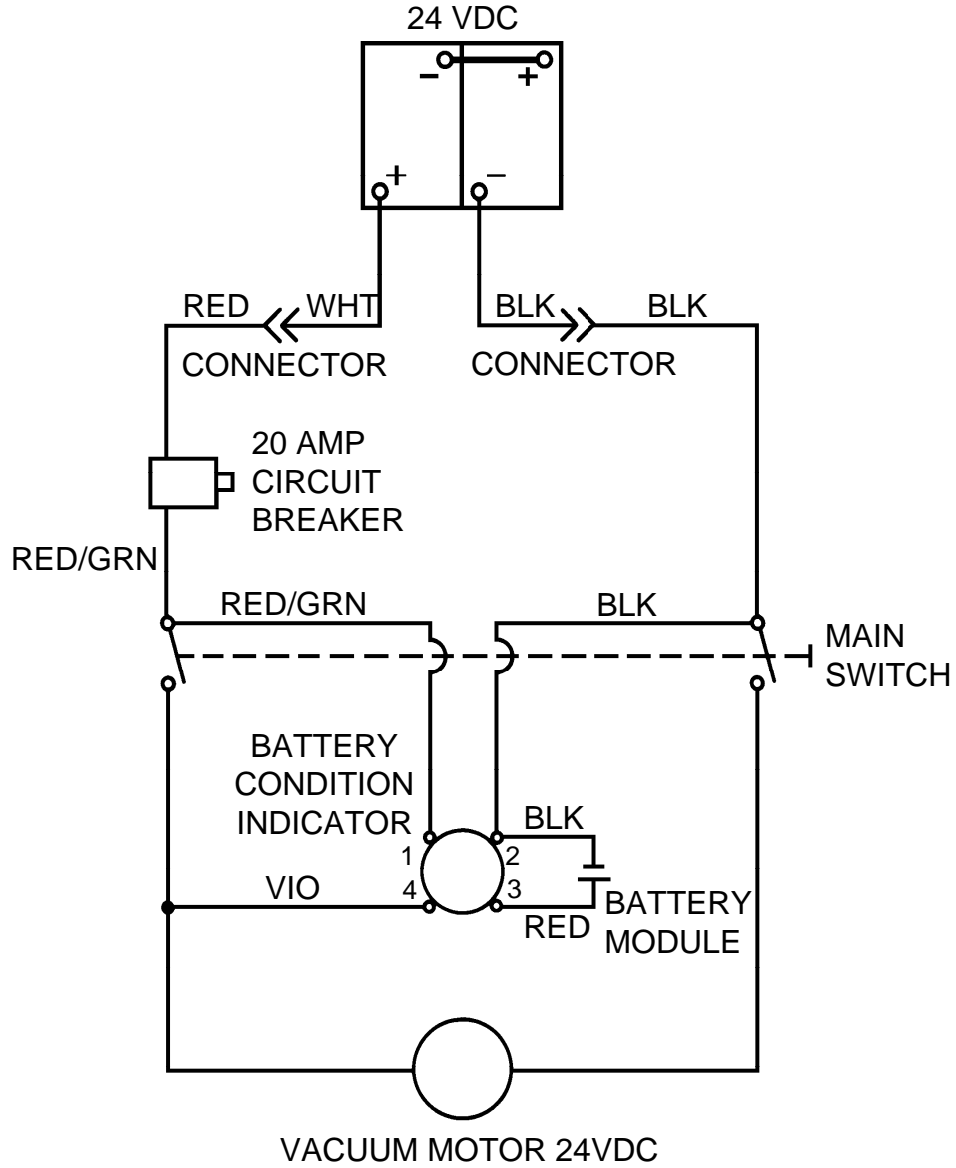
Item	Part No.	Qty	Description
1	56324180	1	Drain Plug
2	56209015	1	Handle
3	56002508	1	#10-24 x 1/2 HP-5 Screw
4	56372222	2	Hose
5	56002957	4	1/4-20 x 3/4 Stnlss Stl Screw
6	56131601	1	Hose Clamp
7	56002491	10	1/4-20 Stnlss Stl Nyl Loc Nut
8	56002893	4	1/4-20 x 1 Screw
9	56002098	4	1/4 Fit Washer
10	56209980	1	Pedal
11	56321532	4	Bushing
12	56002708	4	1/4-20 Nyl Loc Nut
13	56151114	2	Washer
14	56002729	2	1/4-20 x 1/2 Locking Screw
15	56249505	2	Wheel
16	56320595	2	Bushing
17	56002221	2	5/16-18 x 1 Bolt
18	56001939	2	5/16 Fit Washer
19	56340081	2	Caster
20	56209014	1	Squeegee Lift TSB 608-G4
21	56002701	2	5/16-18 Nyl Loc Nut
22	56002969	6	1/4-20 x 3/4 Stnlss Stl Screw
23	56209022	1	Cart
24	56209023	1	Battery Housing
*	56209024	1	Battery Spacer
25	56393560	1	Latch
26	56003069	4	#6-32 x 1/2 Stnlss Stl Screw
*	56002907	4	#6-32 Stnlss Stl Nyl Loc Nut
27	56393559	1	Keeper
28	56370593	1	Hose Adaptor
29	56205821	1	Connector
30	56201390	1	Gasket
31	56209025	1	Tank 12 Gallon
*	56209047	1	Tank 8 Gallon (Japan)
32	56205829	1	Deflector
33	56249992	4	Stnlss Stl Washer
34	56209521	3	#10-16 x 1 Stnlss Stl Screw
35	56209519	1	#10-16 x 3/4 Stnlss Stl Screw
36	56324349	1	Hook
37	56209048	1	Weight
38	56002947	2	Scr, Hex Hd Loc 3/8-16 x 1

* = Not Shown



SQUEEGEE

Item	Part No.	Qty	Description
	56387804	1	Squeegee Assy (#1-16)
1	56387806	1	Squeegee Tool
2	56400613	1	Gasket
3	56370711	2	Thumb Nut
4	56001939	2	5/16 Flt Washer
5	56400614	2	Gasket
	56363892	1	Squeegee Cartridge Assy (#6-10&14)
6	56105552	1	Channel
7	56105534	2	Squeegee Blade
8	56105553	1	Retainer
9	56003037	2	1/4-20 x 1/4 Stnlss Stl Screw
10	56900274	2	1/4-20 x 1 Stnlss Stl Screw
11	56363855	2	Wheel
12	56371009	4	Washer
13	56157060	2	Retainer Ring
14	56201677	2	1/4-20 Wing Nut
15	56002098	2	1/4 Flt Washer
16	56387376	2	Roller



WIRING DIAGRAM

Part No.	Qty	Description
56206962	2	Battery 12V, 93AH (not included)
56206981	1	Automatic Battery Charger (not included)
56209035	1	Power Head Connector (wired to power head)
56209029	1	Battery Charger Connector (wired to batteries)
56395454	1	Circuit Breaker 20 Amp
56200336	1	Main Switch
56372089	1	Battery Condition Indicator
56209036	1	Battery Module
56209037	1	Vacuum Motor 24VDC



**Nilfisk
Advance**
setting standards

Nilfisk-Advance, Inc.
14600 21st Avenue North
Plymouth, MN, 55447-3408
www.nilfisk-advance.com
Phone: 800-989-2235
Fax: 800-989-6566
©2001 Nilfisk-Advance, Inc.,
Plymouth, MN 55447-3408
Printed in the U.S.A.