



Electronic Service Manuals

This electronic document is provided as a service to our customers. We do not create the contents of the information contained in this document. Should you have detailed questions pertaining to the information contained in this document, you may contact Michco, or the manufacturer which provided the original information in this electronic deliverable. Michco's only part in this electronic deliverable was the electronic assembly process.

You may contact Michco through the following methods:
Phone (517) 484-9312 or (800) 331-3339 MI, OH, IN only
2011 N. High St. -- Lansing, Michigan -- 48906
Fax: (517) 484-9836
Email: CustServ@Michco.com
Web site: www.Michco.Com
Parts Web site: www.FloorMachineParts.Com

Order Parts on Line at:
www.FloorMachineParts.Com

Directly to Parts & Service:
By Email: **Shop@Michco.com**
By Fax: (517) 702-2041
By Voice: Use numbers above.

Serving the Cleaning Industry Since 1922

Notice: All copyrighted material remains property of original owners, all trademarks are property of respective owners. Manuals are subject to Manufacturer's reproduction limitations. Originals or reproductions were provided by manufacturers through a request. We make no warranty as to the correctness of information provided in this document and you assume all risk.

Sprite Air Scoop™



PARTS LIST

**Advance MODELS 56209951, 56209954, 56209956
56210101, 56210106, 56210111**

All models covered in this manual are Obsolete except 56209954.



Advance
by Nilfisk-Advance

5/89 revised 8/01 FORM NO. 56042206

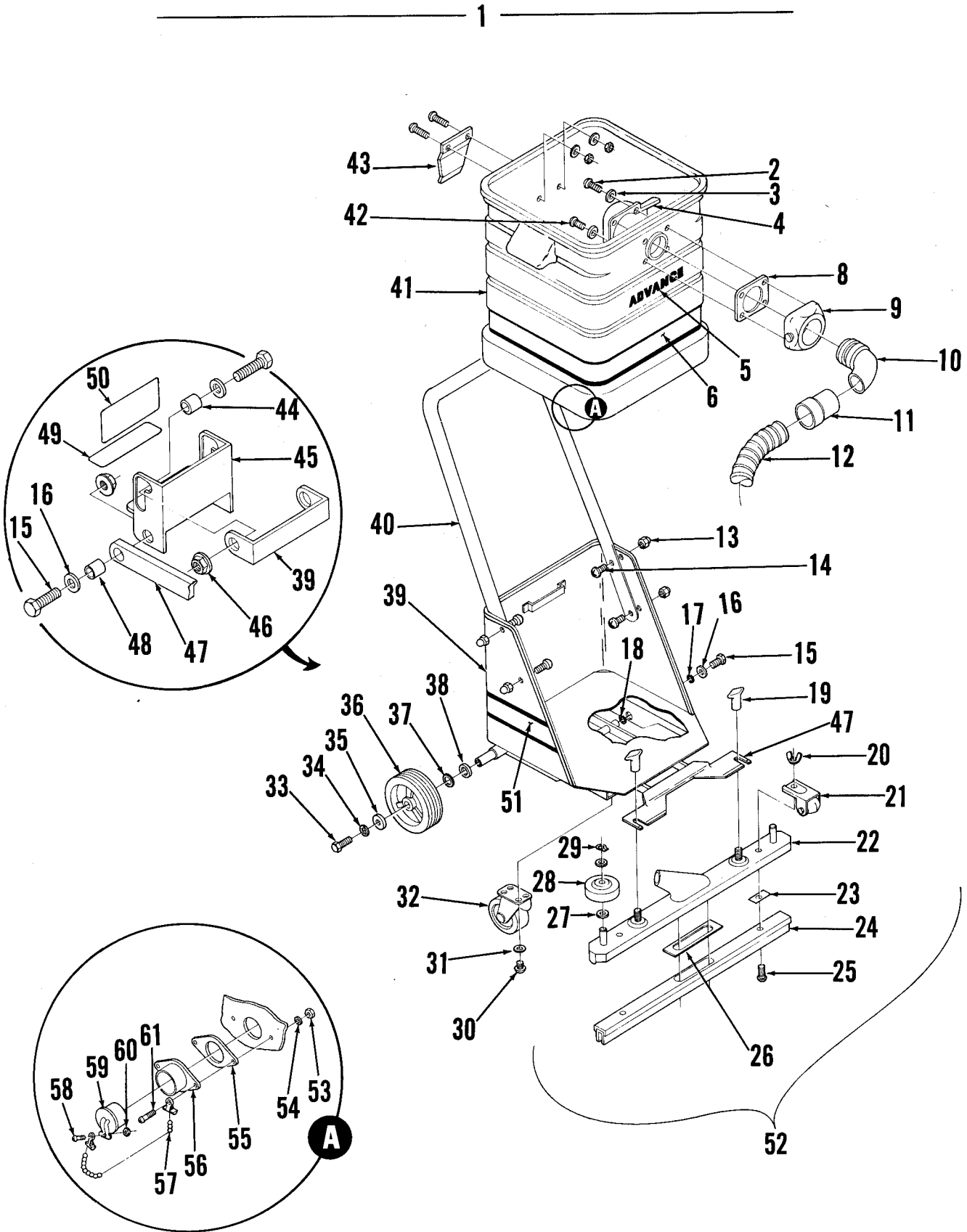
AIR SCOOP TANK AND CART

89-5

2

Sprite Air Scoop™

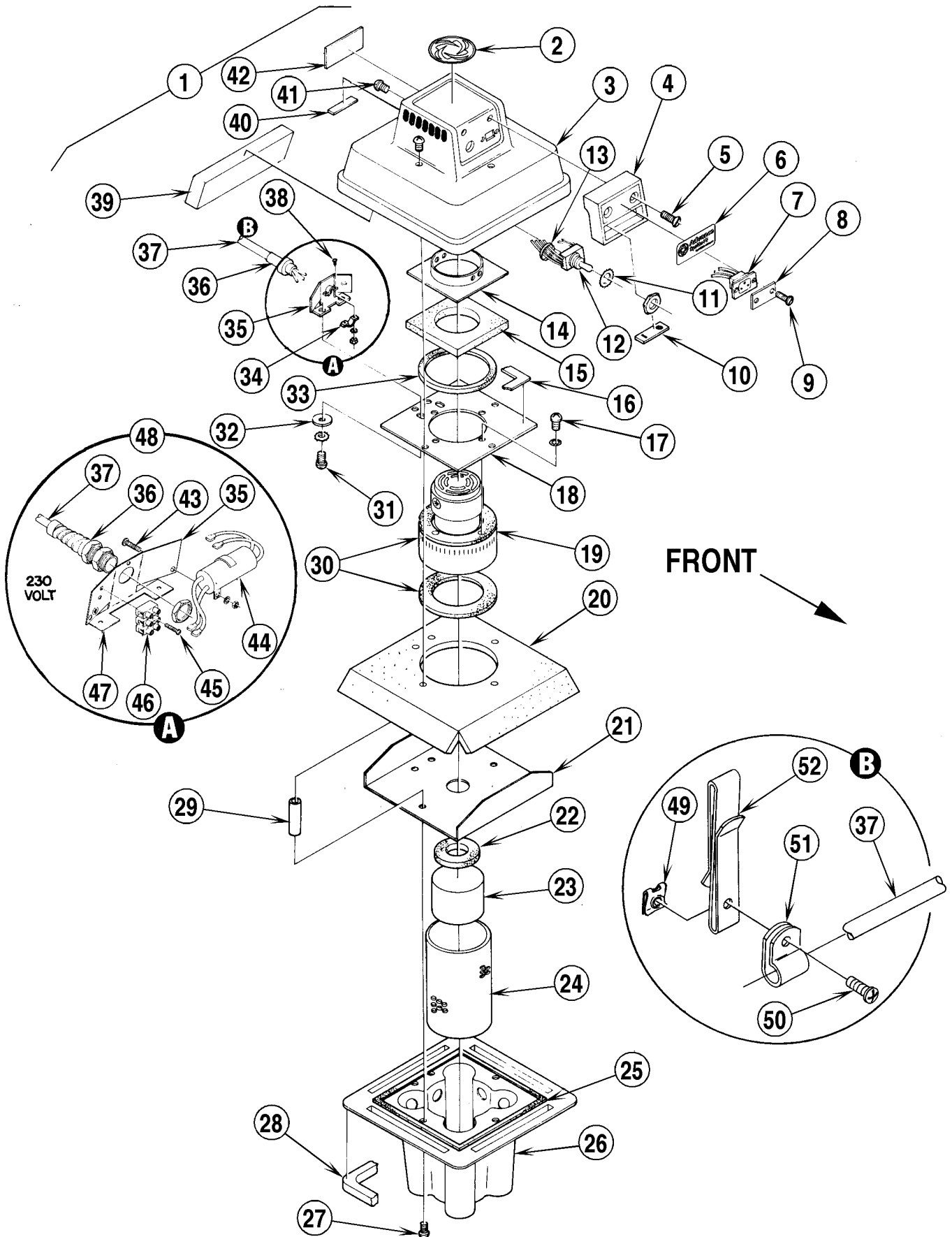
01-1



Item	Ref. No.	Qty	Description	Item	Ref. No.	Qty	Description
1	56209967	1	Tank Assembly 8 Gal	31	56009011	8	Flat Washer
	56210108	1	Tank Assembly 12 Gal	32	56201693	2	Caster
2	56209521	3	#10 x 1 Screw	33	56009033	2	1/4-20 x 1/2 Screw
3	56249992	4	Washer	34	56009008	2	Shakeproof Washer
4	56205829	1	Deflector	35	56151114	2	Washer
5	56014059	1	Advance Decal 8 Gal	36	56209990	2	Wheel 8 Gal
	56014046	1	Advance Decal 12 Gal		56210148	2	Wheel 12 Gal
6	56014156	1	Stripe Decal 8 Gal	37	56155373	2	Washer
	56014146	1	Stripe Decal 12 Gal	38	56155411	2	Washer
7	56210156	1	Drain Plug	39	56209959	1	Base Weldment 8 Gal
8	56201390	1	Gasket		56210102	1	Base Weldment 12 Gal
9	56205821	1	Connector Assembly	40	56209961	1	Handle 8 Gal
10	56370592	1	Hose Adapter		56210103	1	Handle 12 Gal
11	56209957	1	Cuff	**	56209971	1	Complete Cart Assy 8 Gal
12	56209973	1	Hose, Raw				(includes items #13-18, 30-40, 44-51)
	56209969	1	Hose Assembly	41	56209963	1	Tank 8 Gal
13	56002062	4	1/4-20 Acorn Nut		56210104	1	Tank 12 Gal
14	56002145	4	1/4-20 x 1/2 Screw	42		1	#10 x 3/4 Screw
15		5	1/4-20 x 3/4 Screw	43	56250510	1	Bracket
16	56002098	8	Flat Washer	44	56368989	2	Bushing
17	56206784	2	Bushing	45	56209980	1	Pedal
18	56385356	2	Bushing	46	56002708	4	1/4-20 Nut
19	56370711	2	Thumb Nut	47	56209982	1	Lift Arm 8 Gal
20		2	1/4-20 Wing Nut		56210120	1	Lift Arm 12 Gal
21	56387376	2	Roller	48	56321532	2	Bushing
22	56387800	1	Channel 8 Gal	49	56023060	1	Raise Decal
	56387806	1	Channel 12 Gal	50	56023062	1	Lower Decal
23	56400614	1	Gasket	51	56014162	1	Stripe Decal 8 Gal
24	56382356	1	Squeegee Cartridge 8 Gal TSB 590		56014161	1	Stripe Decal 12 Gal
	56363892	1	Squeegee Cartridge 12 Gal TSB 590	52	56387798	1	Squeegee Assembly 8 Gal *
25		2	1/4-20 x 5/8 Screw		56387804	1	Squeegee Assembly 12 Gal *
26	56400613	1	Gasket	53		2	1/4-20 Brass Nut
27	56371009	4	Washer	54		2	1/4 Brass Washer
28	56363855	2	Wheel	55	56210138	1	Gasket
29	56157060	2	Retaining Ring	56	56210107	1	Drain Tube
30		8	#10-24 x 1/2 Screw	57	56209992	1	Chain
				58		1	#6-32 x 1/2 Screw
				59	56210156	1	Cap
				60		1	#6-32 Nut
				61		2	1/4-20 x 5/8 Brass Screw

* = Includes #19 - 29

** = Not Shown

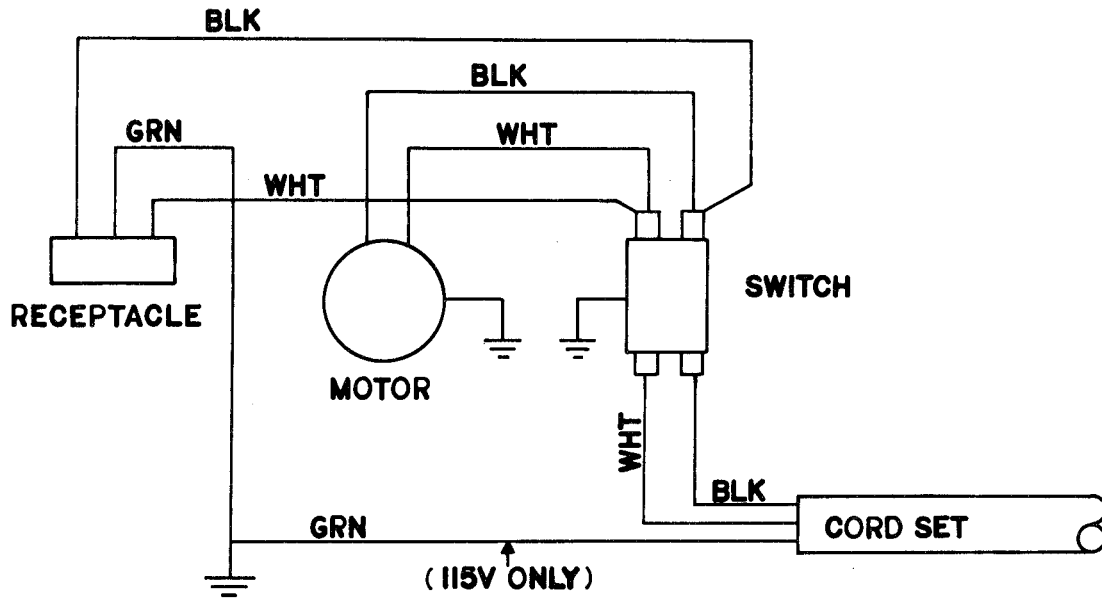


89-5	POWERHEAD			
01-8	Sprite Air Scoop™			5

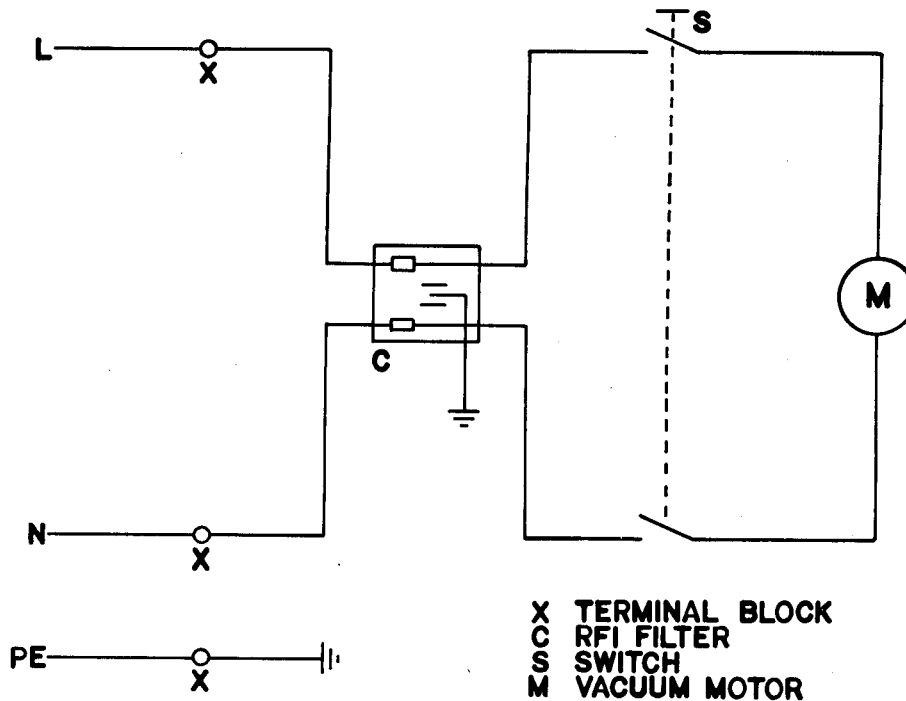
Item	Ref. No.	Qty	Description	Item	Ref. No.	Qty	Description
1	56209975	1	Vac Head 100V	31		2	#8-32 x 3/8 Screw
	56209855	1	Powerhead 115V	32	56203874	2	Washer
	56205858	1	Powerhead 230V	33	56209981	1	Gasket (230V only)
2	56016348	1	Decal, Logo	34	56300542	1	Cord Clamp (100V, 115V)
3	56205838	1	Shroud 8 Gal	35	56209834	1	Bracket 8 Gal (100,115V)
	56205839	1	Shroud 12 Gal		56209875	1	Bracket 8 Gal 230V
4	56205843	1	Console 8 Gal		56209836	1	Bracket 12 Gal 100V, 115V
	56205841	1	Console 12 Gal		56209837	1	Bracket 12 Gal 230V
5		2	#10-24 x 1-3/8 Screw	36	56301396	1	Strain Relief 100V, 115V
6	56016293	1	Decal, Sprite 8		56323046	1	Strain Relief 230V
	56014148	1	Decal, Sprite 12 Gal	37	56209627	1	Cord Set 100V
7	56209876	1	Receptacle (except 230V)		56570680	1	Cord Set 115V
8	56172290	1	Cover (230V) 8 Gal		56301309	1	Cord Set 230V
	56209983		Cover (230V only) 12 Gal	38		2	#8-32 x 1/2 Screw
9	56209828	2	Screw	39	56209461	1	Filter
10	56023224	1	Decal, On/Off	40	56015074	1	Lint Screen Decal
11		1	7/16 Shakeproof Washer	41	56570220	6	Screw
12	56207077	1	Switch 100V, 115V	42	56015084	1	Warning Decal
	56301636	1	Switch 230V	43		2	#8-32 x 3/4 Screw (230V)
13	56325219	5	Cable Tie	44	56387426	1	RFI Filter (230V only)
14	56209482	1	Ring Plate 8 Gal	45		2	#4-40 x 5/8 Screw (230V)
	56209820	1	Ring Plate 12 Gal	46	56183852	1	Terminal Block (230V)
15	56209481	1	Foam 8 Gal	47	56014119	3	Ground Decal (230V)
	56209816	1	Foam 12 Gal	48	56209867	1	Harness Assembly 8 Gal
16	56200754	3'	Gasket		56209874	1	Harness Assembly 12 Gal
17		4	#10-16 x 5/8 Screw	49	56322504	1	#6-32 Spring Nut
18	56209863	1	Plate 8 Gal	50		1	#8-32 x 1/2 Screw
	56209862	1	Plate 12 Gal	51	56300152	1	Clamp
19	56207802	1	Vacuum Motor 100V, 115V	52	56300187	1	Belt Clamp
	56202290	1	Vacuum Motor 230V	**	56015366	1	Decal, Power Outlet
*	56203518	1	Carbon Brush Set				
*	56228051	2	Bearing				
*	56208191	2	Rotating Fan				
20	56209476	1	Sound Reducing. Foam 8 Gal				
	56209768	1	Sound Reducing. Foam 12 Gal				
21	56209766	1	Cover Plate				
22	56206128	1	Gasket				
23	56209571	1	Float				
24	56209566	1	Perforated Shield				
25	56385248	3'	Gasket				
26	56205844	1	Float Housing 8 Gal				
	56205845	1	Float Housing 12 Gal				
27	56209485	5	Screw				
28	56209432	1	Gasket 8 Gal				
	56209763	1	Gasket 12 Gal				
29	56209440	5	Spacer				
30	56209325	2	Gasket				

* = Replacement Parts for Vacuum Motor

** = Not Shown



100V, 115V



230V



Nilfisk-Advance, Inc.
14600 21st Avenue North
Plymouth, MN, 55447-3408
www.nilfisk-advance.com
Phone: 800-989-2235
Fax: 800-989-6566
©2001 Nilfisk-Advance, Inc.,
Plymouth, MN 55447-3408
Printed in the U.S.A.