



Electronic Service Manuals

This electronic document is provided as a service to our customers. We do not create the contents of the information contained in this document. Should you have detailed questions pertaining to the information contained in this document, you may contact Michco, or the manufacturer which provided the original information in this electronic deliverable. Michco's only part in this electronic deliverable was the electronic assembly process.

You may contact Michco through the following methods:
Phone (517) 484-9312 or (800) 331-3339 MI, OH, IN only
2011 N. High St. -- Lansing, Michigan -- 48906
Fax: (517) 484-9836
Email: CustServ@Michco.com
Web site: www.Michco.Com
Parts Web site: www.FloorMachineParts.Com

Order Parts on Line at:
www.FloorMachineParts.Com

Directly to Parts & Service:
By Email: **Shop@Michco.com**
By Fax: (517) 702-2041
By Voice: Use numbers above.

Serving the Cleaning Industry Since 1922

Notice: All copyrighted material remains property of original owners, all trademarks are property of respective owners. Manuals are subject to Manufacturer's reproduction limitations. Originals or reproductions were provided by manufacturers through a request. We make no warranty as to the correctness of information provided in this document and you assume all risk.

Sprite™ 5/8

Sprite Air-Scoop™ 8



PARTS LIST

Advance MODELS 56209270, 56209273, 56209276

This parts list is for machines after serial number 1194685

All models covered in this manual are OBSOLETE



Advance
by Nilfisk-Advance

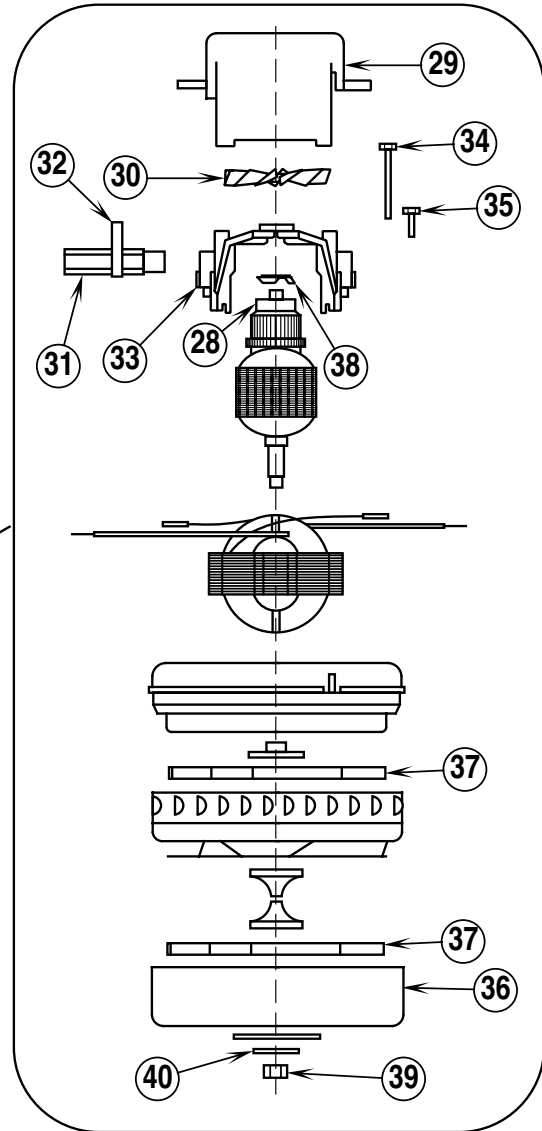
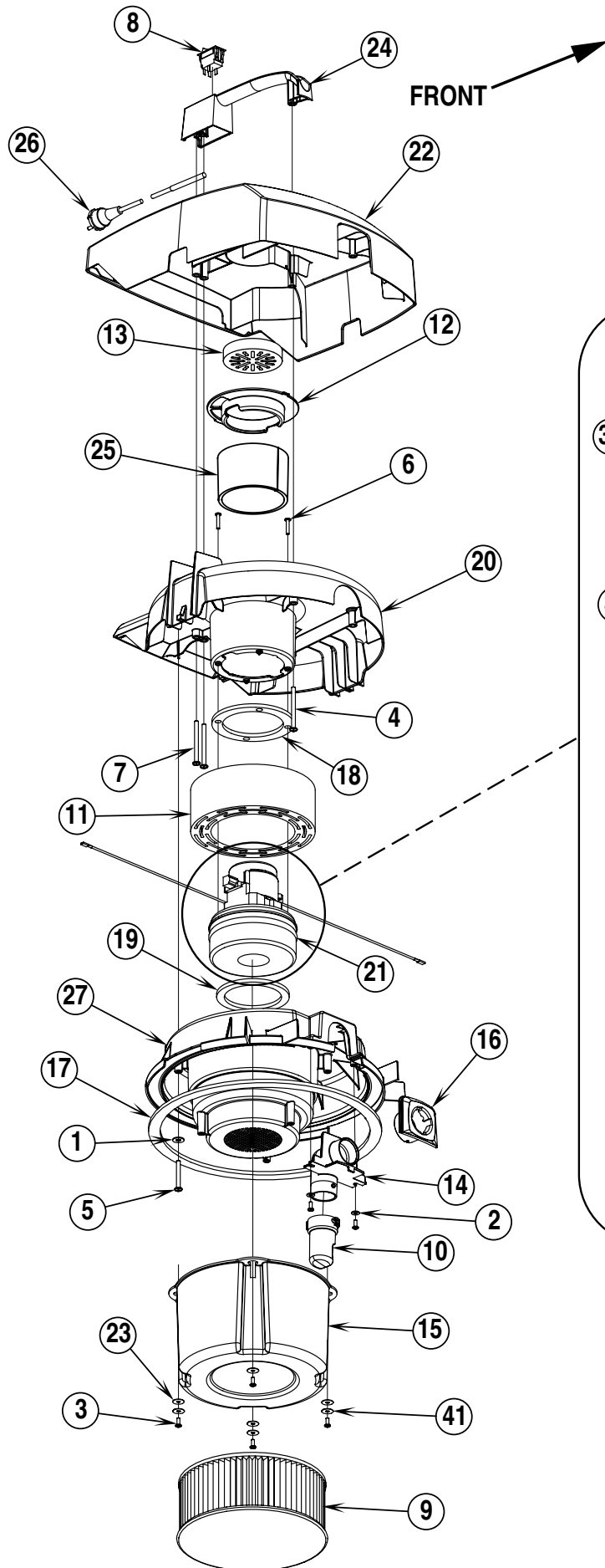
TABLE OF CONTENTS

DESCRIPTION	PAGE
Motorhead System	1-2
Tank Systems	3-4
Handle Assembly / Squeegee System	5-6
Squeegee Assembly	7-8
Wiring Diagrams	9-10

WHEN ORDERING PARTS

- * Use the 8 digit numbers from the "Part No." columns in this parts list.
- * Specify the model and serial number of the machine.
- * Use the space below to record the model and serial number for future reference.

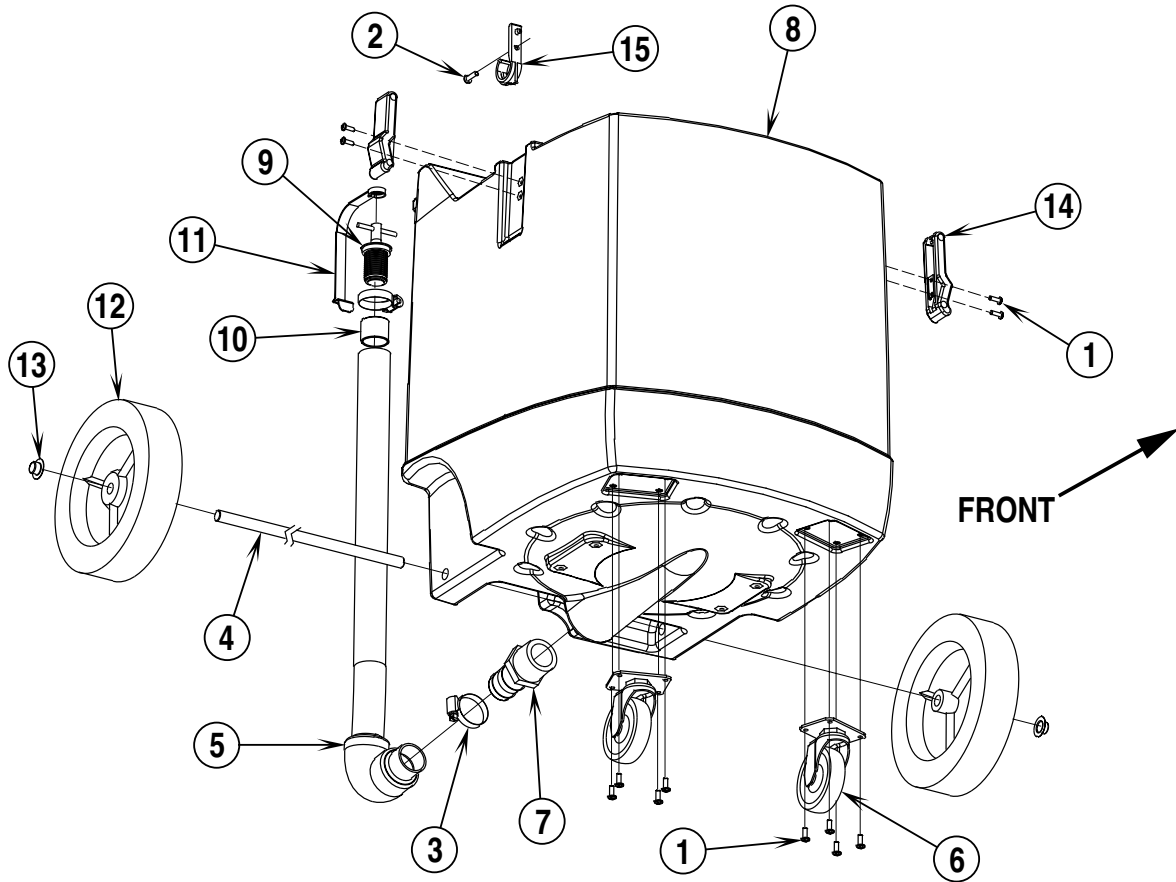
Model _____ Serial No. _____



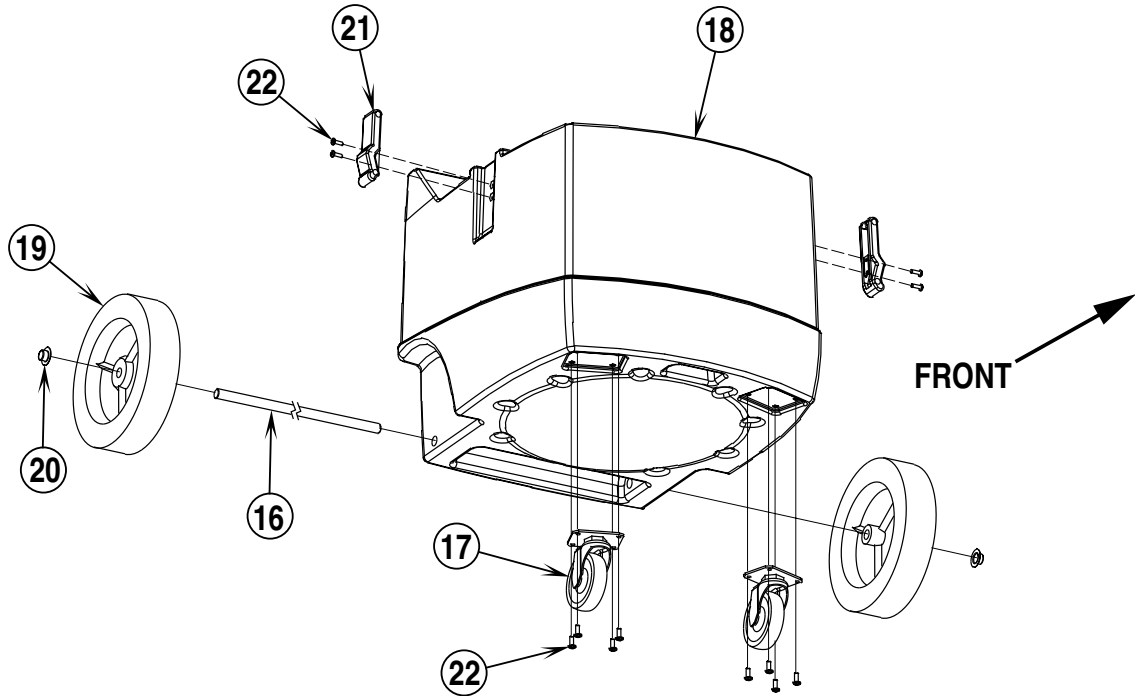
MOTORHEAD SYSTEM

Item	Part No.	Qty	Description
1	56002859	7	Wsh, Flt SAE SS 1/4
2	56009205	2	Wsh, Flt SAE SS #10
3	56003400	6	Scr, Pan Phil Loc SS 10-24 x .50
4	56002397	1	Scr, Hex Hd 1/4-20 x 2.75
5	56002880	4	Scr, Hex Hd Loc 1/4-20 x 1.75
6	56009135	4	Scr, Hex Hd Thd Form 10-24 x .62
7	56002603	2	Scr, Hex Hd 1/4-20 x 3.00
8	56209321	1	Switch, Rocker (main power)
9	56209300	1	Filter, Dry Pick-up (optional)
10	56209280	1	Deflector, Elbow
11	56209284	1	Silencer, Outlet Air
12	56209285	1	Cover, Inlet Seal
13	56209286	1	Seal, Foam
14	56209287	1	Elbow, Inlet
15	56209288	1	Float
16	56209289	1	Coupling, Hose Inlet
17	56209290	1	Gasket, Cover
18	56209291	1	Gasket, Motor
19	56209292	1	Gasket, Motor Face
20	56209282	1	Cover Assembly, Middle
21	56209307	1	Motor, Vacuum 120V (refer to items 28-40 for replacement parts)
*	56250579	1	Ground Wire
*	56009029	1	Scr, Pan Phil Thd Form 10-24 x .50
22	56209338	1	Cover Assembly, Outer 120V
23	56209334	4	Retainer, Float Cover
24	56209301	1	Handle Assembly, Motorhead
25	56209320	1	Filter, Sound
26	56209342	1	Cord Set 120V
27	56209281	1	Cover Assembly, Inner
28	56209405	1	Ball Bearing
29	56209389	1	By-Pass Cap
30	56209390	1	Cooling Fan
31	56209393	2	Carbon Brush Assembly 120V
32	56209395	2	Cap Clip 120V
33	56209396	1	Brush End Bracket
34	56209397	2	Assembly Screw
35	56209398	2	Brush Screw
36	56209399	1	Chamber 120V
37	56209401	2	Impeller
38	56209402	1	Pre-Load Spring
39	56209403	1	Nut
40	56209404	1	Washer
41	56002875	4	Wsh, Flt SAE SS #8

Sprite 8



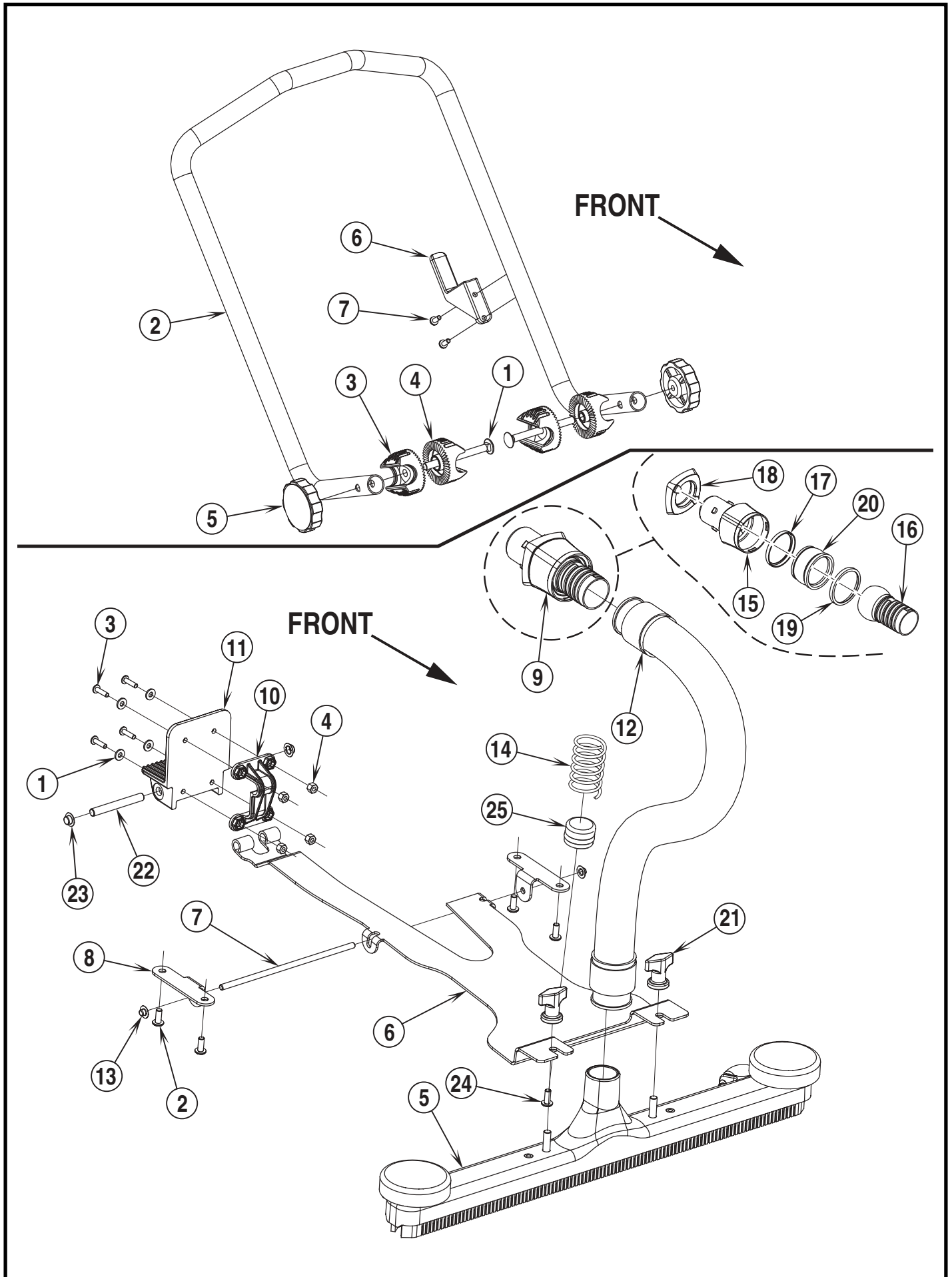
Sprite 5



TANK SYSTEMS

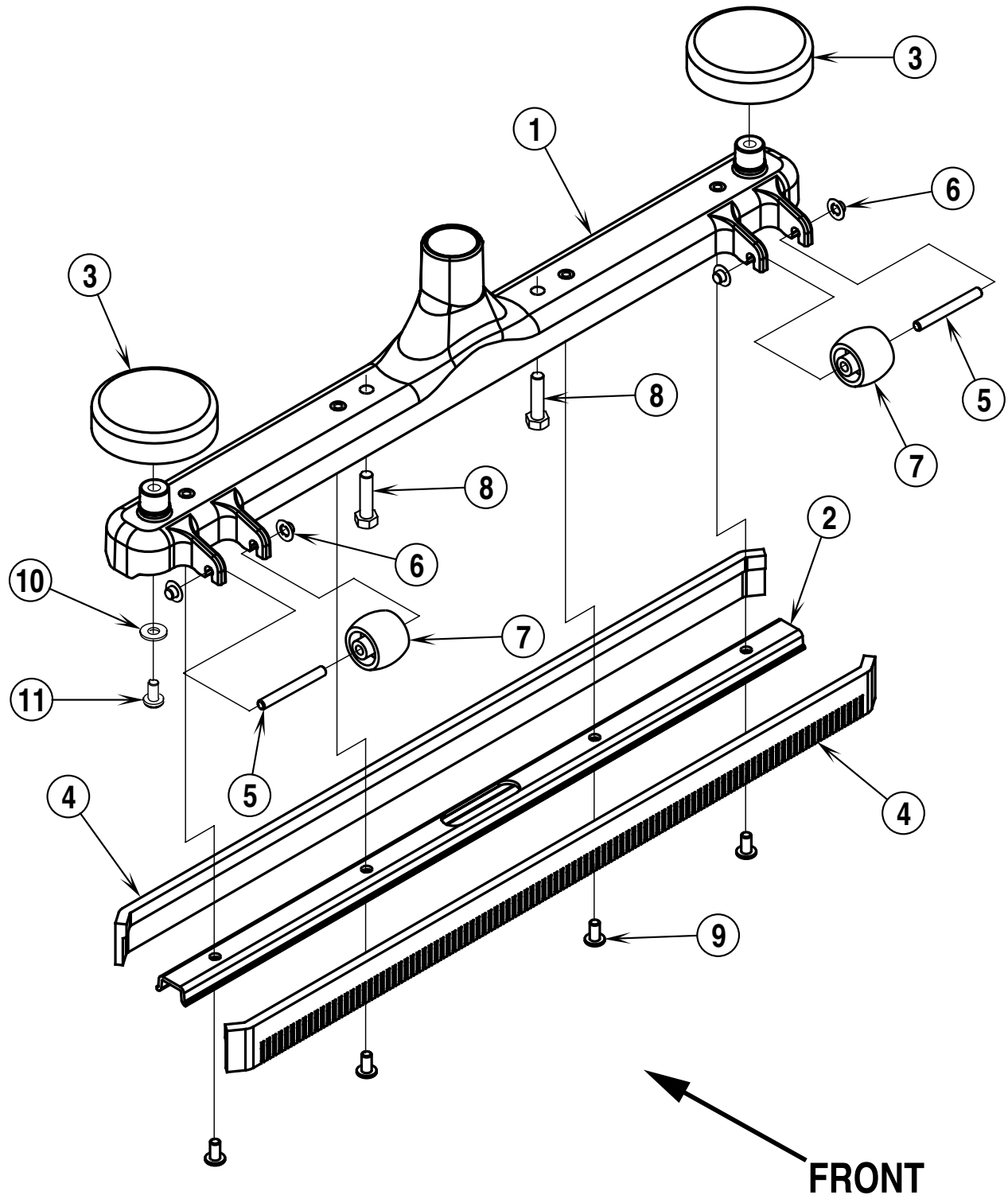
Item	Part No.	Qty	Description
8 Gallon Tank System			
1	56002438	12	Scr, Hex Hd 8-32 x .50
2	56009005	1	Scr, Pan Phil SS Plastite 10-16 x .75
3	56131601	2	Clamp, Hose SAE #16
4	56209296	1	Axle, Wheel
5	56209302	1	Hose, Drain
6	56209304	2	Caster
7	56209306	1	Fitting
8	56209294	1	Tank, 8 Gallon
9	56260098	1	Plug, T-Handle
10	56261266	1	Plug Tube
11	56261378	1	Cork Strap
12	56346594	2	Wheel
13	56009097	2	Cap, Stud
14	56462316	2	Latch, Draw
15	56324349	1	Hook (Drain Hose Hanger)
5 Gallon Tank System			
16	56209296	1	Axle, Wheel
17	56209304	2	Caster
18	56209295	1	Tank, 5 Gallon
19	56346594	2	Wheel
20	56009097	2	Cap, Stud
21	56462316	2	Latch, Draw
22	56002438	12	Scr, Pan Phil 8-32 x .50
*	56209224	1	Tool Kit (optional)
*	56100373	1	14" Tool, Soft Floor
*	56100372	1	14" Tool, Hard Floor
*	56209234	1	54" Two Piece, 2 Bend Chromed Steel Wand with ABS Tool Coupling
*	56209233	1	14" ABS Squeegee with Thermal Plastic Rubber Blades
*	56100377	1	3" Round Dusting Brush
*	56100375	1	5" Upholstery Tool
*	56100376	1	11" Crevice Tool
*	56204212	1	1.5" x 10' Crushproof Plastic Vacuum Hose with Cuffs

* = Not Shown



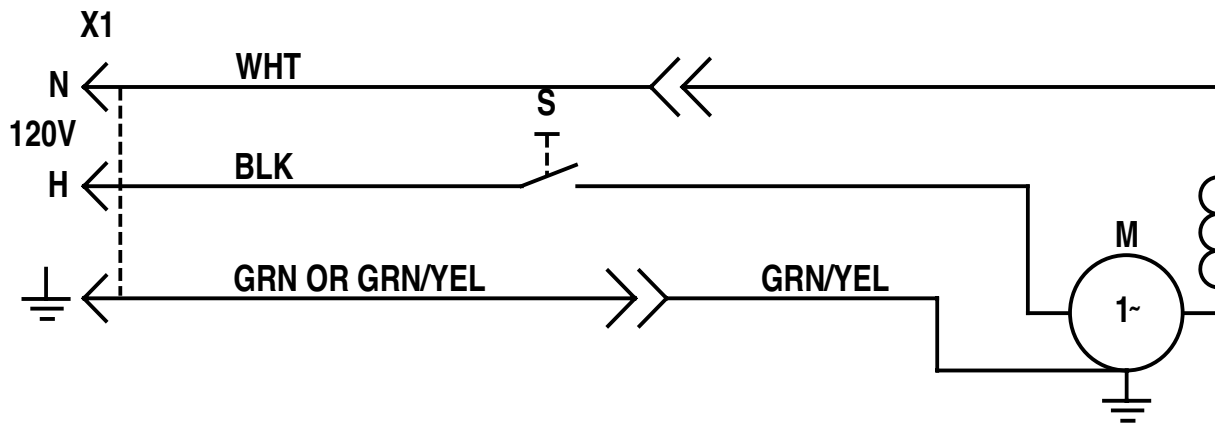
HANDLE ASSEMBLY / SQUEEGEE SYSTEM

Item	Part No.	Qty	Description
	56209329	1	Handle Assembly
1	56009227	2	Scr, Carriage 5/16-18 x 3.50
2	56209297	1	Handle Tube
3	56264118	2	Ratchet
4	56264123	2	Ratchet
5	56302167	2	Knob
6	56262518	1	Hook, Cord
7	56009029	2	Scr, Pan Phil Thd Form 10-24 x .50
Squeegee System (Sprite 8 Air Scoop)			
1	56001954	4	Wsh, Flt SAE #10
2	56002066	4	Scr, Pan Phil 1/4-20 x .62
3	56002192	4	Scr, Pan Phil 10-24 x .75
4	56002768	4	Nut, Loc Nut Full 10-24
5	56209088	1	Squeegee Assembly (refer to pages 7-8)
6	56209305	1	Arm, Squeegee
7	56209308	1	Axle, Squeegee
8	56209309	2	Bracket, squeegee
9	56209310	1	Adaptor Assembly, Hose Outlet (refer to items 15-20 for replacement parts) TSBUS2002-815
10	56209331	1	Cam, squeegee Lift
11	56209332	1	Pedal
12	56209333	1	Hose, Squeegee
13	56009132	2	Cap, Stud
14	56209298	1	Compression Spring
15	56209314	1	Coupling, Hose Outlet TSBUS2002-815
16	56209318	1	Coupling Adaptor, Hose Outlet TSBUS2002-815
17	56209328	1	Ring, Inner TSBUS2002-815
18	56209330	1	Seal, Hose Inlet TSBUS2002-815
19	56209335	1	Ring, Outer TSBUS2002-815
20	56370711	1	Retainer, Rubber TSBUS2002-815
21	56209154	2	Nut, Thumb
22	56209160	1	Axle, Pedal
23	56009123	2	Nut, Push Cap 3/8
24	56009005	1	Scr, Pan Phil SS Type B 10-16 x .75
25	56209382	1	Housing, Spring
	56209381	1	Kit, Squeegee (items 1-25 of Squeegee System / for Sprite 8)



SQUEEGEE ASSEMBLY (SPRITE 8 AIR SCOOP)

Item	Part No.	Qty	Description
	56209088	1	Squeegee Assembly (#1-11)
1	56209155	1	Housing, Squeegee
2	56209130	1	Retainer, Squeegee
3	56209157	2	Bumper, Side Roller
4	56105533	2	Blade
5	56209150	2	Axle
6	56009132	4	Nut, Push Cap 1/4
7	56329554	2	Roller
8	56002884	2	Scr, Hex Hd SS 5/16-18X1.25
9	56003119	4	Scr, Pan Phil SS 1/4-20X.50
10	56009205	2	Wsh, Flt SS #10
11	56009226	2	Scr, Pan Phil Type 25 SS 10-16 x .38



WIRING DIAGRAM

Item	Part No.	Qty	Description
S	56209321	1	Switch, Rocker (main power)
M	56209307	1	Motor, Vacuum 120V (refer to pages 1-2 for replacement parts)



Nilfisk-Advance, Inc.
14600 21st Avenue North
Plymouth, MN, 55447-3408
www.nilfisk-advance.com
Phone: 800-989-2235
Fax: 800-989-6566
©2001 Nilfisk-Advance, Inc.,
Plymouth, MN 55447-3408
Printed in the U.S.A.