



Electronic Service Manuals

This electronic document is provided as a service to our customers. We do not create the contents of the information contained in this document. Should you have detailed questions pertaining to the information contained in this document, you may contact Michco, or the manufacturer which provided the original information in this electronic deliverable. Michco's only part in this electronic deliverable was the electronic assembly process.

You may contact Michco through the following methods:
Phone (517) 484-9312 or (800) 331-3339 MI, OH, IN only
2011 N. High St. -- Lansing, Michigan -- 48906
Fax: (517) 484-9836
Email: CustServ@Michco.com
Web site: www.Michco.Com
Parts Web site: www.FloorMachineParts.Com

Order Parts on Line at:
www.FloorMachineParts.Com

Directly to Parts & Service:
By Email: **Shop@Michco.com**
By Fax: (517) 702-2041
By Voice: Use numbers above.

Serving the Cleaning Industry Since 1922

Notice: All copyrighted material remains property of original owners, all trademarks are property of respective owners. Manuals are subject to Manufacturer's reproduction limitations. Originals or reproductions were provided by manufacturers through a request. We make no warranty as to the correctness of information provided in this document and you assume all risk.

Sprite™ 5/8/12



PARTS LIST

**Advance MODELS 56205601, 56205800, 56205805
56205830, 56205835, 56205840, 56205701, 56205705**

This parts list is for machines after serial number 334802

All models covered in this manual are OBSOLETE



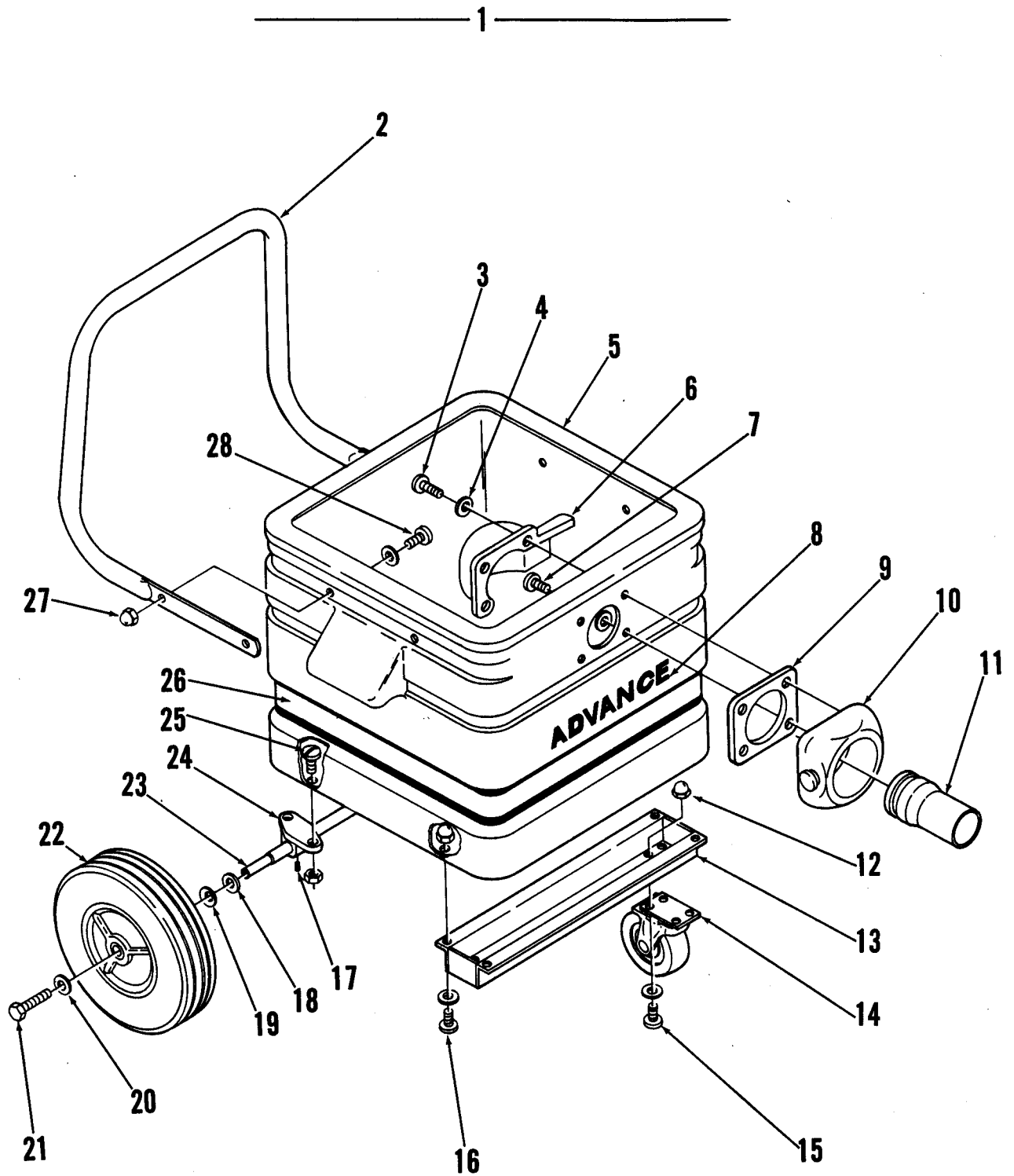
**Nilfisk
Advance**

setting standards

revised 2/99 Form Number 56042201

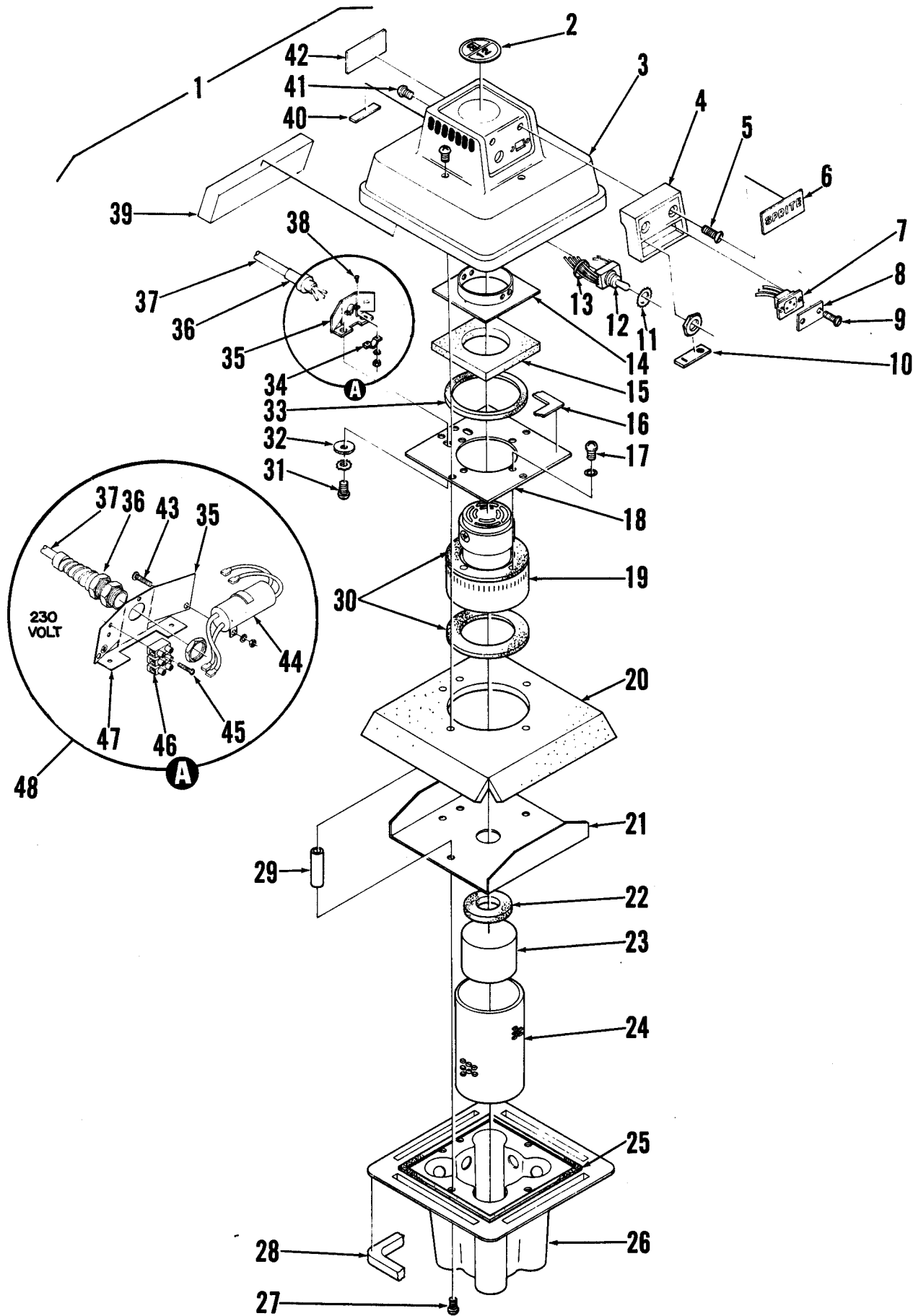
Index for Form Number 042201

Description	Location	page
Tank	D1	1
Vacuum Head	D3	3
Wiring Diagram	D5	5



TANK ASSEMBLY

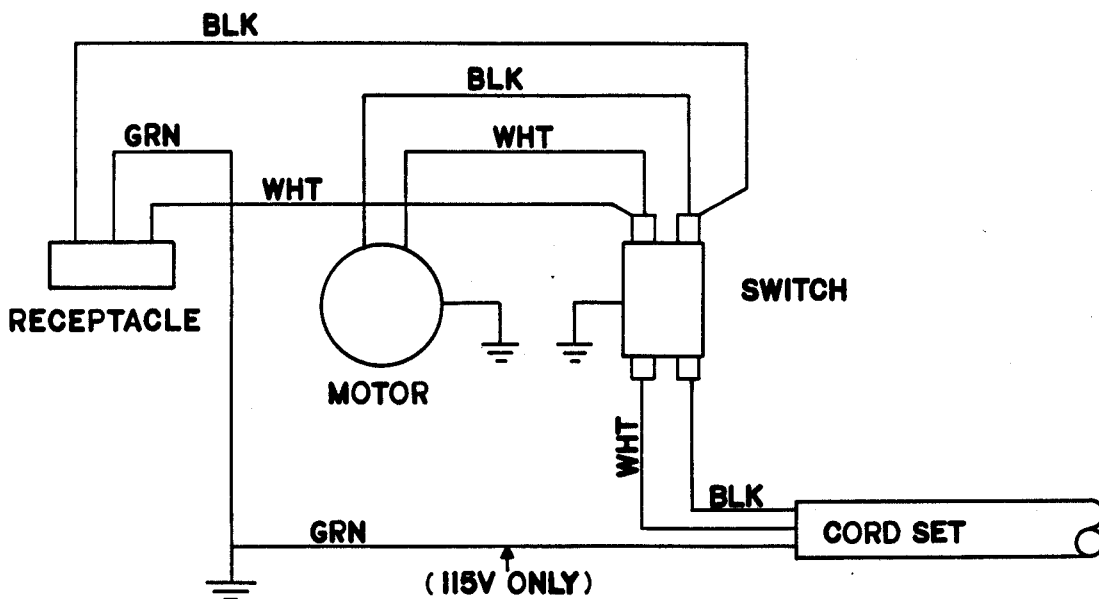
Item	Part No.	Qty	Description
1	205857	1	Tank Assembly, 5 Gal
	205855	1	Tank Assembly, 8 Gal
	205856	1	Tank Assembly, 12 Gal
2	205846	1	Handle, 5, 8 Gal
	205847	1	Handle, 12 Gal
3	209521	3	Screw
4	249992	4	Washer
5	205848	1	Tank, 5 Gal
	205813	1	Tank with Decal, 5 Gal
	205849	1	Tank, 8 Gal
	205819	1	Tank with Decal, 8 Gal
	205851	1	Tank, 12 Gal
	205823	1	Tank with Decal, 12 Gal
6	205829	1	Deflector
7	205519	1	Screw
8	014059	1	Advance Decal, 5, 8 Gal
	014046	1	Advance Decal, 12 Gal
9	201390	1	Gasket
10	205821	1	Connector
11	301339	1	Coupler
12	209720	8	Nut, 5, 8 Gal
		8	#10-24 Nut, 12 Gal
13	205824	1	Bracket (12 Gal only)
14	201693	2	Caster
15	209485	8	Screw, 5, 8 Gal
		8	#10-32 x 3/8 Screw, 12 Gal
16	209491	4	Screw (12 Gal only)
17		2	1/4-20 x 1/4 Set Screw
18	155411	2	Washer
19	155373	2	Bowed Washer
20	155114	2	Washer
21		2	1/4-20 x 1/2 Screw
22	209990	2	Wheel, 5, 8 Gal
	346594	2	Wheel, 12 Gal
23	209420	1	Axle, 5, 8 Gal
	209712	1	Axle, 12 Gal
24	205827	1	Right Axle Block
	205828	1	Left Axle Block
25	204491	4	Screw, 5, 8 Gal
	209486	4	Screw, 12 Gal
26	014156	1	Stripe Decal, 5, 8 Gal
	014146	1	Stripe Decal, 12 Gal
27		4	1/4-20 Nut
28	576518	4	Screw



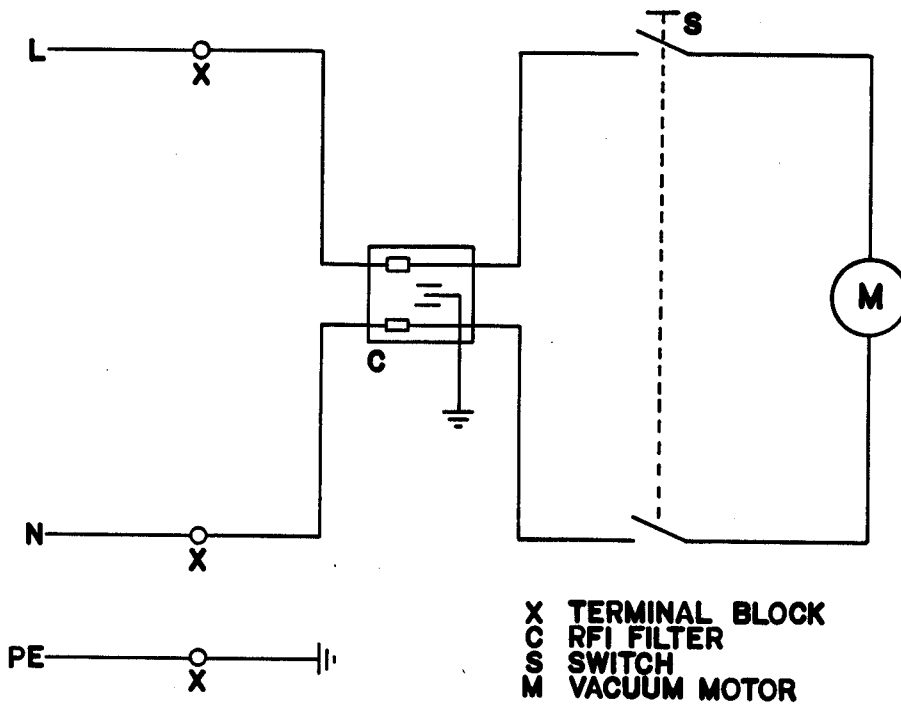
POWER HEAD

Item	Part No.	Qty	Description	Item	Part No.	Qty	Description
1	205860	1	Powerhead 100V 5, 8 Gal	31		2	#8-32 x 3/8 Screw
	205836	1	Powerhead 115V 5, 8 Gal	32	203874	2	Washer
	205859	1	Powerhead 230V 5, 8 Gal	33	209981	1	Gasket (230V only)
	205837	1	Powerhead 115V 12 Gal	34	300542	1	Cord Clamp (100V, 115V)
	205858	1	Powerhead 230V 12 Gal	35	209834	1	Bracket 5, 8 Gal 100,115V
2	014149	1	Decal, 5 Gal		209875	1	Bracket 5, 8 Gal 230V
	014150	1	Decal, 8 Gal		209836	1	Bracket 12 Gal 100V, 115V
	014151	1	Decal, 12 Gal		209837	1	Bracket 12 Gal 230V
3	205838	1	Shroud 5, 8 Gal	36	301396	1	Strain Relief 100V, 115V
	205839	1	Shroud 12 Gal		323046	1	Strain Relief 230V
4	205843	1	Console 5, 8 Gal	37	209627	1	Cord Set 100V
	205841	1	Console 12 Gal		570680	1	Cord Set 115V
5		2	#10-24 x 1-3/8 Screw		301309	1	Cord Set 230V
6	014147	1	Decal, Sprite 5, 8 Gal	38		2	#8-32 x 1/2 Screw
	014148	1	Decal, Sprite 12 Gal	39	209461	1	Filter
7	209876	1	Receptacle (except 230V)	40	015074	1	Lint Screen Decal
8	172290	1	Cover (230V) 5, 8 Gal	41	570220	6	Screw
	209983	1	Cover (230V only) 12 Gal	42	015084	1	Warning Decal
9	209828	2	Screw	43		2	#8-32 x 3/4 Screw (230V)
10	023224	1	Decal, On/Off	44	387426	1	RFI Filter (230V only)
11		1	7/16 Shakeproof Washer	45		2	#4-40 x 5/8 Screw (230V)
12	207077	1	Switch 100V, 115V	46	183852	1	Terminal Block (230V)
	301636	1	Switch 230V	47	014119	3	Ground Decal (230V)
13	325219	5	Cable Tie	48	209867	1	Harness Assembly 5, 8 Gal
14	209482	1	Ring Plate 5, 8 Gal		209874	1	Harness Assembly 12 Gal
	209820	1	Ring Plate 12 Gal	*	015366	1	Decal, Power Outlet
15	209481	1	Foam 5, 8 Gal				
	209816	1	Foam 12 Gal				
16	200754	3'	Gasket				
17		4	#10-16 x 5/8 Screw				
18	209863	1	Plate 5, 8 Gal				
	209862	1	Plate 12 Gal				
19	207802	1	Vacuum Motor 100V, 115V				
	202290	1	Vacuum Motor 230V				
*	203518	1	Carbon Brush Set				
*	228051	1	Bearing				
*	208191	2	Rotating Fan				
20	209476	1	Sound Reducing Foam 5, 8 Gal				
	209768	1	Foam 12 Gal				
21	209436	1	Cover Plate 5, 8 Gal				
	209766	1	Cover Plate 12 Gal				
22	206128	1	Gasket				
23	209571	1	Float				
24	209566	1	Perforated Shield				
25	385248	3'	Gasket				
26	205844	1	Float Housing 5, 8 Gal				
	205845	1	Float Housing 12 Gal				
27	209485	5	Screw				
28	209432	1	Gasket 5, 8 Gal				
	209763	1	Gasket 12 Gal				
29	209440	5	Spacer				
30	209325	2	Gasket				

* = Replacement Parts for Vacuum Motor



100V, 115V



230V

WIRING DIAGRAM