



## Electronic Service Manuals

This electronic document is provided as a service to our customers. We do not create the contents of the information contained in this document. Should you have detailed questions pertaining to the information contained in this document, you may contact Michco, or the manufacturer which provided the original information in this electronic deliverable. Michco's only part in this electronic deliverable was the electronic assembly process. By providing this manual on line we are not guaranteeing parts availability.

You may contact Michco through the following methods:

Phone (517) 484-9312 or (800) 331-3339

2011 N. High St. -- Lansing, Michigan -- 48906

Fax: (517) 484-9836

Email: [CustServe@Michco.com](mailto:CustServe@Michco.com)

Web site: [www.Michco.Com](http://www.Michco.Com)

Parts Web site: [www.FloorMachineParts.Com](http://www.FloorMachineParts.Com)

Order Parts on Line at:

**[www.FloorMachineParts.Com](http://www.FloorMachineParts.Com)**

Directly to Parts & Service:

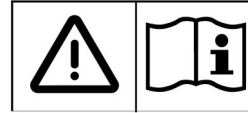
By Email: **[Shop@Michco.com](mailto:Shop@Michco.com)**

By Fax: (517) 702-2041

By Voice: Use numbers above.

**Serving the Cleaning Industry Since 1922**

Notice: All copyrighted material remains property of original owners, all trademarks are property of respective owners. Manuals are subject to Manufacturer's reproduction limitations. Originals or reproductions were provided by manufacturers through a request. We make no warranty as to the correctness of information provided in this document and you assume all risk. By placing these manuals on line we are not declaring our corporation to be an manufacturer authorized dealer or provider, please check our web site for authorized manufacturers we represent.



ENGLISH

Models:  
35, 55-1, 55-2, 75-1, 75-2

VL 500

Service Manual



Preface	3
Safety Issues	4
Technical specifications	5
Construction	12
Top	12
Container	15
Parts	18
Models:	
35	18
55-1, 75-1	20
55-2, 75-2	21
55, 75 BSF, BDF	22
55, 75 EDF	23
Filter and Bags	24
Squeegee	24
Diagrams	25
Notes	26

In this manual you will find the essentials you need to know when repairing the wet and dry vacuum cleaners in the VL500 series. When carrying out repairs, make sure you have a suitable workbench or the like with the necessary water and power supply available.

- If you determine an error in operation, be sure to refer the customer to the user manual.

A fault in the equipment can have a number of causes. The chapter "service / repair" will help you here. Use the illustrated spare parts lists for your repairs. These show you the location of the individual parts and the sequence in which they are assembled.

- Always refer to the technical service bulletin information sheets. Also known as TSB's

These will tell you about any technical modifications made after publication of this service manual.

- Only use **original Nilfisk-Advance** spare parts

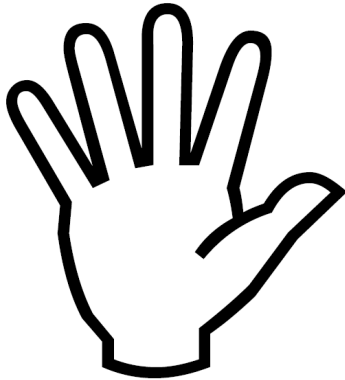
It is under no circumstances legal to provide this service manual and any technical service bulletin that might be released to third party without a written approval from the Global Product Management group, located at

Sognevej 25, 2605 Brøndby, Denmark

**To be performed by a skilled or instructed person only !  
Disconnect the vacuum cleaner from the power supply before  
starting the work!**



Safety instructions marked with this symbol in this manual must be observed to prevent danger to persons.



This symbol is used to mark safety instructions that must be observed to prevent damage to the equipment and degradation of performance.



This symbol indicates tips and instructions to simplify work and to ensure safe operation.

Technical description				
VL500 Series				
Service data	Unit	Europe		
Model		VL500	VL500	VL500
Country Variants		EU	EU	EU
Technical Data ↓				
Electric:				
Power Picc	W	1250	1250 / 2400	1250 / 2400
Max Power	W	1350	1350 / 2500	1350 / 2500
IP Protection		IP24	IP24	IP24
Plug style		EU	EU	EU
Cable length	m	10	10	10
Motor:				
Numbers of motors		1	1 / 2	1 / 2
Suction power	W	250	250 / 390	250 / 390
Vacuum	kPa	20	20	21
Air flow	l/sec	48	48 / 72	48 / 72
Unit Data:				
Container size	l	35	55	75
Container net filling - dry (without bag)	l	35	51,7	71,2
Container net filling - dry (with bag)	l	18,2	28,1	44,4
Container net filling (wet)	l	24.5	38.5	52.5
Container material		PPC	PPC	PPC
Sack filter area	cm <sup>2</sup>	1051	1840	1840
Wet filter area	cm <sup>2</sup>	1051	1840	1840
Cartridge filter area	cm <sup>2</sup>	2070	4410	4410
Hose length	m	1.9	2.5	2.5
Accessories diameter	mm	32	40	40
Sound pressure IEC 704	dB	81	82 / 84	82 / 84
Sound pressure BS 5415	dB	62	64 / 66	64 / 66
Weight - BSF	kg	11,5	23,5 / 24,5	26 / 27
Weight - EDF	kg	12,5	26,5 / 27,5	27,5 / 28,5
Weight - BDF	kg	-	24,5 / 25,5	27 / 28
Dimensions - Basic	cm	-	84,2x62x100	84,2x62x100
Dimensions - Ergo	cm	46,2x42x73,6	65,5x62x89	65,5x62x103
Drain hose		No	Yes	Yes

Technical specification for the VL500 EU variants

Technical description				
VL500 Series				
Service data	Unit	United Kingdom		
Model		VL500	VL500	VL500
Country Variants		UK	UK	UK
Technical Data ↓				
Electric:				
Power Picc	W	1250	1250 / 2400	1250 / 2400
Max Power	W	1350	1350 / 2500	1350 / 2500
IP Protection		IP24	IP24	IP24
Plug style		UK	UK	UK
Cable length	m	10	10	10
Motor:				
Numbers of motors		1	1 / 2	1 / 2
Suction power	W	250	250 / 390	250 / 390
Vacuum	kPa	20	20	21
Air flow	l/sec	48	48 / 72	48 / 72
Unit Data:				
Container size	l	35	55	75
Container net filling - dry (without bag)	l	35	51,7	71,2
Container net filling - dry (with bag)	l	18,2	28,1	44,4
Container net filling (wet)	l	24.5	38.5	52.5
Container material		PPC	PPC	PPC
Sack filter area	cm <sup>2</sup>	1051	1840	1840
Wet filter area	cm <sup>2</sup>	1051	1840	1840
Cartridge filter area	cm <sup>2</sup>	2070	4410	4410
Hose length	m	1.9	2.5	2.5
Accessories diameter	mm	32	40	40
Sound pressure IEC 704	dB	81	82 / 84	82 / 84
Sound pressure BS 5415	dB	62	64 / 66	64 / 66
Weight - BSF	kg	11,5	23,5 / 24,5	26 / 27
Weight - EDF	kg	12,5	26,5 / 27,5	27,5 / 28,5
Weight - BDF	kg	-	24,5 / 25,5	27 / 28
Dimensions - Basic	cm	-	84,2x62x100	84,2x62x100
Dimensions - Ergo	cm	46,2x42x73,6	65,5x62x89	65,5x62x103
Drain hose		No	Yes	Yes

Technical specification for the VL500 UK variants

Technical description				
VL500 Series				
Service data	Unit	Australia / New Zealand		
Model		VL500	VL500	VL500
Country Variants		AU / NZ	AU / NZ	AU / NZ
Technical Data ↓				
Electric:				
Power Picc	W	1250	1250 / 2400	1250 / 2400
Max Power	W	1350	1350 / 2500	1350 / 2500
IP Protection		IP24	IP24	IP24
Plug style		AU / NZ	AU / NZ	AU / NZ
Cable length	m	10	10	10
Motor:				
Numbers of motors		1	1 / 2	1 / 2
Suction power	W	250	250 / 390	250 / 390
Vacuum	kPa	20	20	21
Air flow	l/sec	48	48 / 72	48 / 72
Unit Data:				
Container size	l	35	55	75
Container net filling - dry (without bag)	l	35	51,7	71,2
Container net filling - dry (with bag)	l	18,2	28,1	44,4
Container net filling (wet)	l	24.5	38.5	52.5
Container material		PPC	PPC	PPC
Sack filter area	cm <sup>2</sup>	1051	1840	1840
Wet filter area	cm <sup>2</sup>	1051	1840	1840
Cartridge filter area	cm <sup>2</sup>	2070	4410	4410
Hose length	m	1.9	2.5	2.5
Accessories diameter	mm	32	40	40
Sound pressure IEC 704	dB	81	82 / 84	82 / 84
Sound pressure BS 5415	dB	62	64 / 66	64 / 66
Weight - BSF	kg	11,5	23,5 / 24,5	26 / 27
Weight - EDF	kg	12,5	26,5 / 27,5	27,5 / 28,5
Weight - BDF	kg	-	24,5 / 25,5	27 / 28
Dimensions - Basic	cm	-	84,2x62x100	84,2x62x100
Dimensions - Ergo	cm	46,2x42x73,6	65,5x62x89	65,5x62x103
Drain hose		No	Yes	Yes

Technical specification for the VL500 AU / NZ variants

Technical description				
VL500 Series				
Service data	Unit	United States		
Model		VL500	VL500	VL500
Country Variants		US	US	US
Technical Data ↓				
Electric:				
Power Picc	W	1000	1000 / 1840	1000 / 1840
Max Power	W	1100	1100 / 2000	1100 / 2000
IP Protection		IP24	IP24	IP24
Plug style		US	US	US
Cable length	m	15	15	15
Motor:				
Numbers of motors		1	1 / 2	1 / 2
Suction power	W	220	170 / 340	170 / 340
Vacuum	kPa	20	18 / 19	18 / 19
Air flow	l/sec	45	40 / 64	40 / 64
Unit Data:				
Container size	l	35	55	75
Container net filling - dry (without bag)	l	35	51,7	71,2
Container net filling - dry (with bag)	l	18,2	28,1	44,4
Container net filling (wet)	l	24.5	38.5	52.5
Container material		PPC	PPC	PPC
Sack filter area	cm <sup>2</sup>	1051	1840	1840
Wet filter area	cm <sup>2</sup>	1051	1840	1840
Cartridge filter area	cm <sup>2</sup>	2070	4410	4410
Hose length	m	1.9	2.5	2.5
Accessories diameter	mm	32	40	40
Sound pressure IEC 704	dB	81	82 / 84	82 / 84
Sound pressure BS 5415	dB	62	64 / 66	64 / 66
Weight - BSF	kg	11,5	23,5 / 24,5	26 / 27
Weight - EDF	kg	12,5	26,5 / 27,5	27,5 / 28,5
Weight - BDF	kg	-	24,5 / 25,5	27 / 28
Dimensions - Basic	cm	-	84,2x62x100	84,2x62x100
Dimensions - Ergo	cm	46,2x42x73,6	65,5x62x89	65,5x62x103
Drain hose		No	Yes	Yes

Technical specification for the VL500 US variants

Technical description				
VL500 Series				
Service data	Unit	Japan		
Model		VL500	VL500	VL500
Country Variants		JP	JP	JP
Technical Data ↓				
Electric:				
Power Picc	W	1150	1150	1150
Max Power	W	1250	1250	1250
IP Protection		IP24	IP24	IP24
Plug type		JP	JP	JP
Cable length	m	15	15	15
Motor:				
Numbers of motors		1	1	1
Suction power	W	250	200	200
Vacuum	kPa	20	18	18
Air flow	l/sec	48	42	42
Unit Data:				
Container size	l	35	55	75
Container net filling - dry (without bag)	l	35	51,7	71,2
Container net filling - dry (with bag)	l	18,2	28,1	44,4
Container net filling (wet)	l	24.5	38.5	52.5
Container material		PPC	PPC	PPC
Sack filter area	cm <sup>2</sup>	1051	1840	1840
Wet filter area	cm <sup>2</sup>	1051	1840	1840
Cartridge filter area	cm <sup>2</sup>	2070	4410	4410
Hose length	m	1.9	2.5	2.5
Accessories diameter	mm	32	40	40
Sound pressure IEC 704	dB	81	82	82
Sound pressure BS 5415	dB	62	64	64
Weight - BSF	kg	11,5	23,5	26
Weight - EDF	kg	12,5	26,5	27,5
Weight - BDF	kg	-	24,5	27
Dimensions - Basic	cm	-	84,2x62x100	84,2x62x100
Dimensions - Ergo	cm	46,2x42x73,6	65,5x62x89	65,5x62x103
Drain hose		No	Yes	Yes

Technical specification for the VL500 JP variants

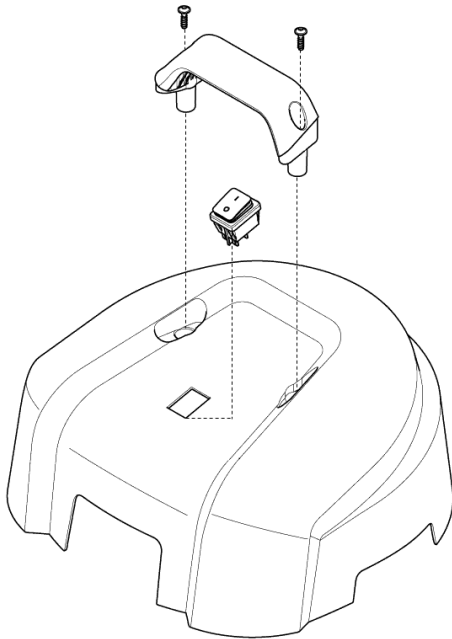
Technical description				
VL500 Series				
Service data	Unit	Switzerland		
Model		VL500	VL500	VL500
Country Variants		CH	CH	CH
Technical Data ↓				
Electric:				
Power Picc	W	1250	1250 / 2400	1250 / 2400
Max Power	W	1350	1350 / 2500	1350 / 2500
IP Protection		IP24	IP24	IP24
Plug style		CH	CH	CH
Cable length	m	10	10	10
Motor:				
Numbers of motors		1	1 / 2	1 / 2
Suction power	W	250	250 / 390	250 / 390
Vacuum	kPa	20	20	21
Air flow	l/sec	48	48 / 72	48 / 72
Unit Data:				
Container size	l	35	55	75
Container net filling - dry (without bag)	l	35	51,7	71,2
Container net filling - dry (with bag)	l	18,2	28,1	44,4
Container net filling (wet)	l	24.5	38.5	52.5
Container material		PPC	PPC	PPC
Sack filter area	cm <sup>2</sup>	1051	1840	1840
Wet filter area	cm <sup>2</sup>	1051	1840	1840
Cartridge filter area	cm <sup>2</sup>	2070	4410	4410
Hose length	m	1.9	2.5	2.5
Accessories diameter	mm	32	40	40
Sound pressure IEC 704	dB	81	82 / 84	82 / 84
Sound pressure BS 5415	dB	62	64 / 66	64 / 66
Weight - BSF	kg	11,5	23,5 / 24,5	26 / 27
Weight - EDF	kg	12,5	26,5 / 27,5	27,5 / 28,5
Weight - BDF	kg	-	24,5 / 25,5	27 / 28
Dimensions - Basic	cm	-	84,2x62x100	84,2x62x100
Dimensions - Ergo	cm	46,2x42x73,6	65,5x62x89	65,5x62x103
Drain hose		No	Yes	Yes

Technical specification for the VL500 CH variants

Technical description				
VL500 Series				
Service data	Unit	China		
Model		VL500	VL500	VL500
Country Variants		CN	CN	CN
Technical Data ↓				
Electric:				
Power Picc	W	1250	1250 / 2400	1250 / 2400
Max Power	W	1350	1350 / 2500	1350 / 2500
IP Protection		IP24	IP24	IP24
Plug style		CN	CN	CN
Cable length	m	10	10	10
Motor:				
Numbers of motors		1	1 / 2	1 / 2
Suction power	W	250	250 / 390	250 / 390
Vacuum	kPa	20	20	21
Air flow	l/sec	48	48 / 72	48 / 72
Unit Data:				
Container size	l	35	55	75
Container net filling - dry (without bag)	l	35	51,7	71,2
Container net filling - dry (with bag)	l	18,2	28,1	44,4
Container net filling (wet)	l	24.5	38.5	52.5
Container material		PPC	PPC	PPC
Sack filter area	cm <sup>2</sup>	1051	1840	1840
Wet filter area	cm <sup>2</sup>	1051	1840	1840
Cartridge filter area	cm <sup>2</sup>	2070	4410	4410
Hose length	m	1.9	2.5	2.5
Accessories diameter	mm	32	40	40
Sound pressure IEC 704	dB	81	82 / 84	82 / 84
Sound pressure BS 5415	dB	62	64 / 66	64 / 66
Weight - BSF	kg	11,5	23,5 / 24,5	26 / 27
Weight - EDF	kg	12,5	26,5 / 27,5	27,5 / 28,5
Weight - BDF	kg	-	24,5 / 25,5	27 / 28
Dimensions - Basic	cm	-	84,2x62x100	84,2x62x100
Dimensions - Ergo	cm	46,2x42x73,6	65,5x62x89	65,5x62x103
Drain hose		No	Yes	Yes

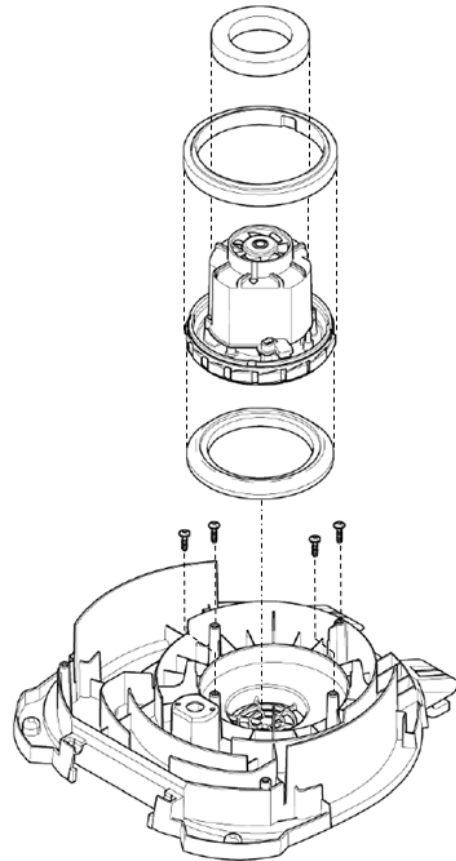
Technical specification for the VL500 CN variants

## VL500 - Top 35



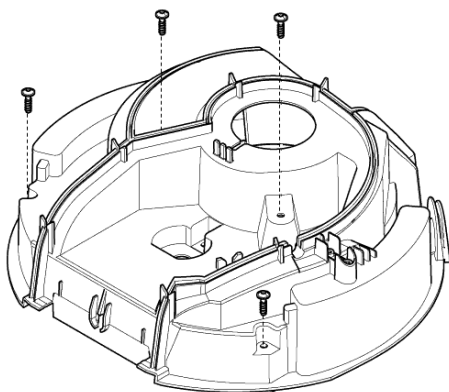
Art: 6.1

Art: 6.1 shows how the handle, top cover and the switch is placed on top of the motor cover.



Art: 6.3

Art: 6.3 shows how the motor is fitted into the bottom part of the motor head.

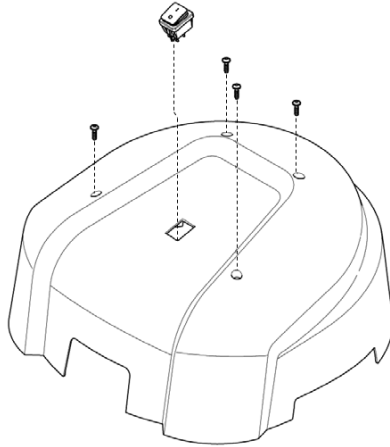


Art: 6.2

Art: 6.2 shows how the motor cover is fitted into the bottom part of the motor head.

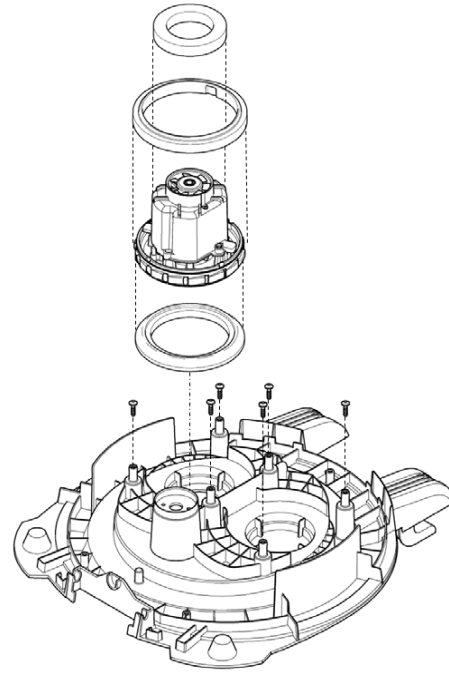
Please refer to the spare part list for part numbers.

### VL500 - Top 55-1, 75-1



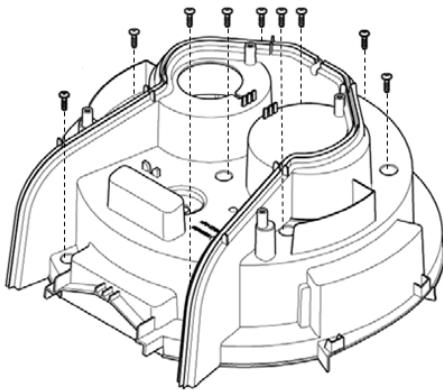
Art: 7.1

Art: 7.1 shows how the top cover and the switch is placed on top of the motor cover.



Art: 7.3

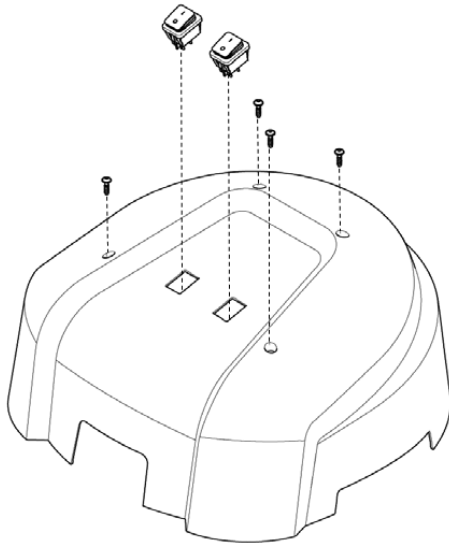
Art: 7.3 shows how the motor is fitted into the bottom part of the motor head.



Art: 7.2

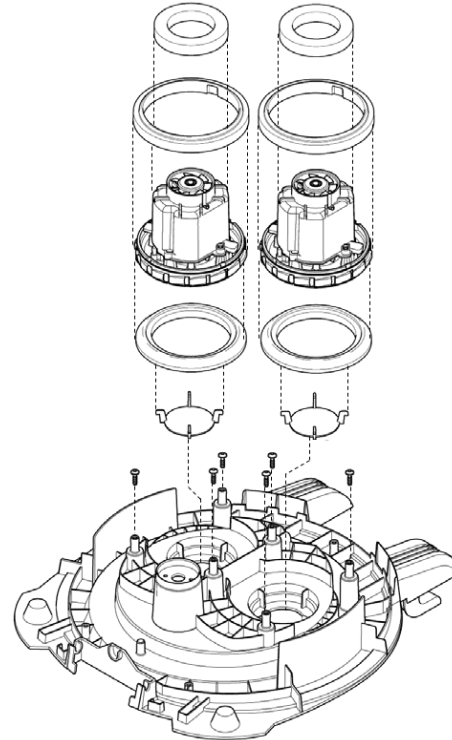
Art: 7.2 shows how the motor cover is fitted into the bottom part of the motor head.

Please refer to the spare part list for part numbers.

**VL500 - Top 55-2, 75-2**


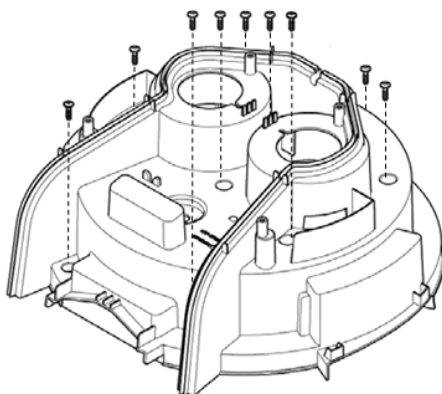
Art: 8.1

Art: 8.1 shows how the top cover and the switches are placed on top of the motor cover.



Art: 8.3

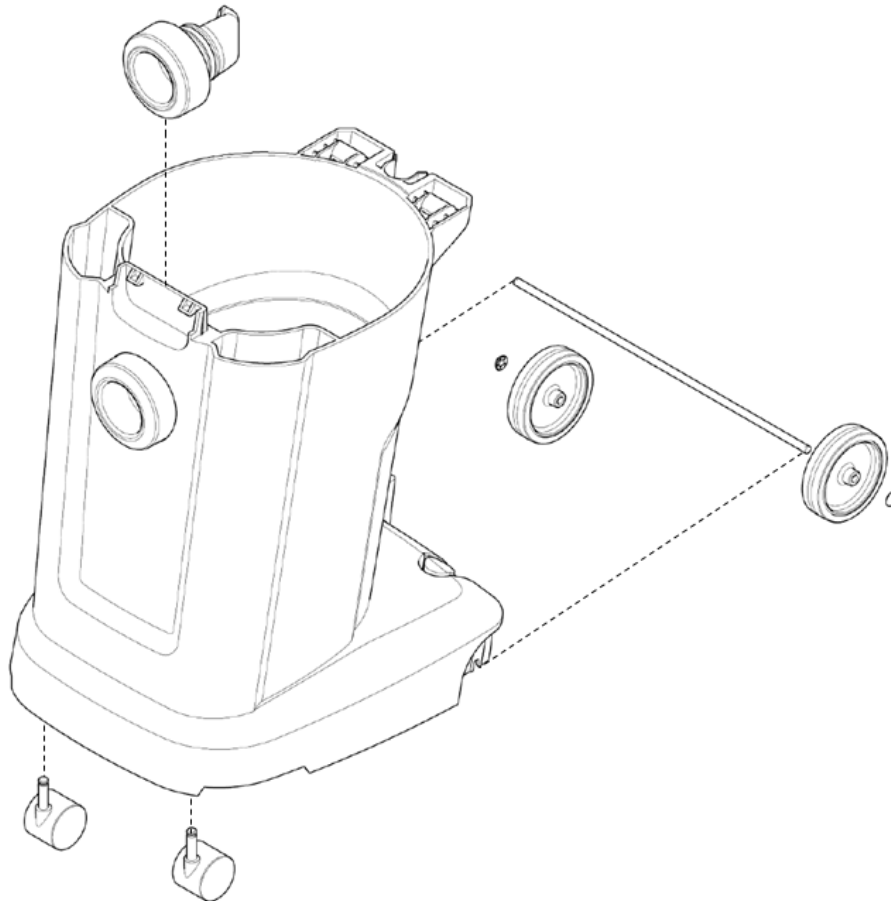
Art: 8.3 shows how the motors are fitted into the bottom part of the motor head.



Art: 8.2

Art: 8.2 shows how the motor cover is fitted into the bottom part of the motor head.

Please refer to the spare part list for part numbers.

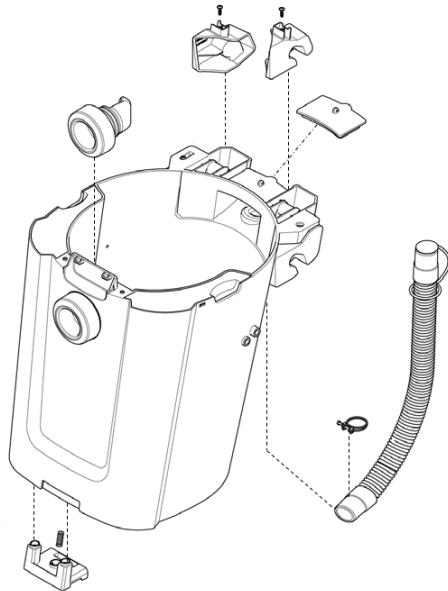
**VL500 - Container 35**

Art: 9.1

Art: 9.1 shows how the 35 L container is fitted with front and back wheels including the rear axel.

\*Please note that the inlet will need to be damaged/cut in order to change it.

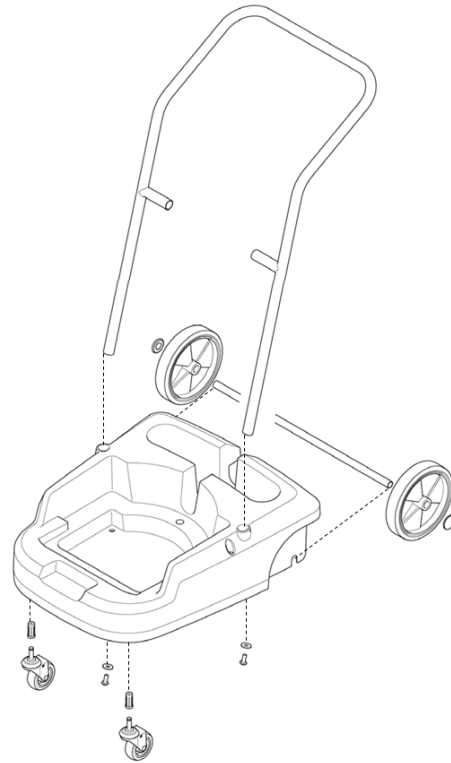
Please refer to the spare part list for part numbers.

**VL500 - Container 55-1, 55-2, 75-1, 75-2**


Art: 10.1

Art: 10.1 shows how the drain hose, drain lid, and the release is fitted to the container.

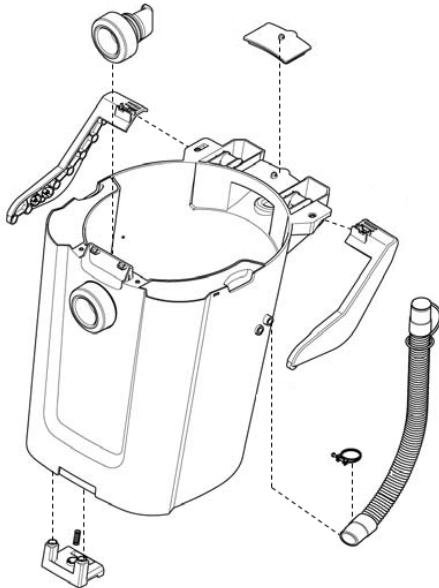
\*Please note that the inlet will need to be damaged/cut in order to change it.



Art: 10.2

Art: 10.2 shows how the front- and rear wheels, axel, and the handle is fitted to the trolley.

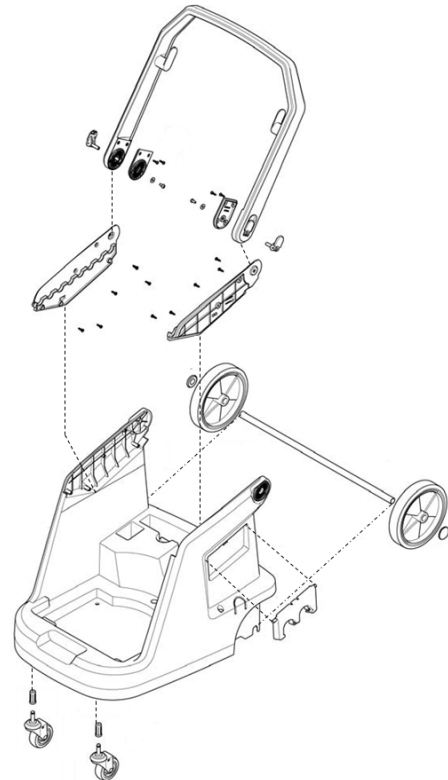
Please refer to the spare part list for part numbers.

**VL500 - Container 55-1, 55-2, 75-1, 75-2 ERGO**


Art: 11.1

Art: 11.1 shows how the drain hose, drain lid, release and the ERGO tilt is fitted to the container.

\*Please note that the inlet will need to be damaged/cut in order to change it.

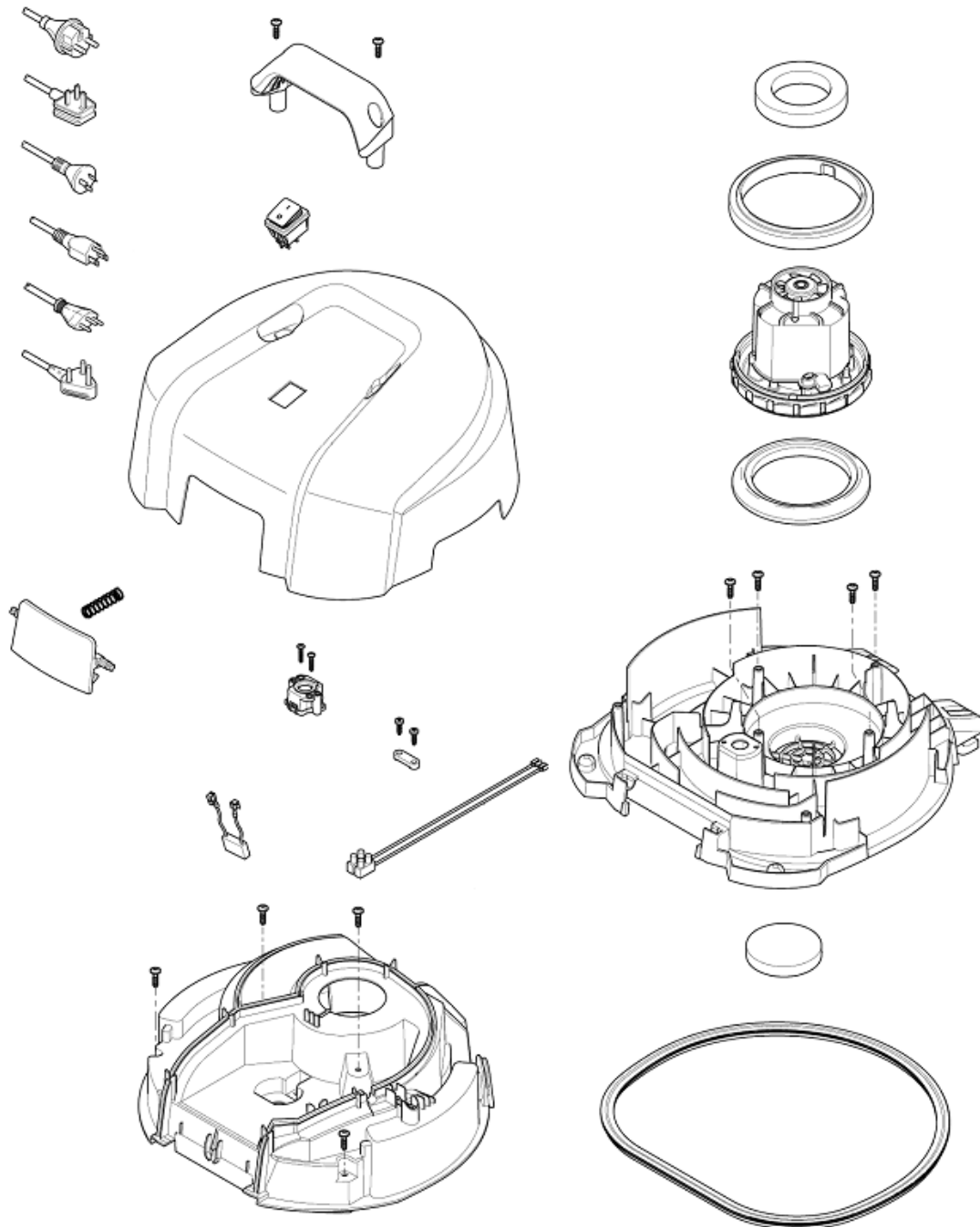


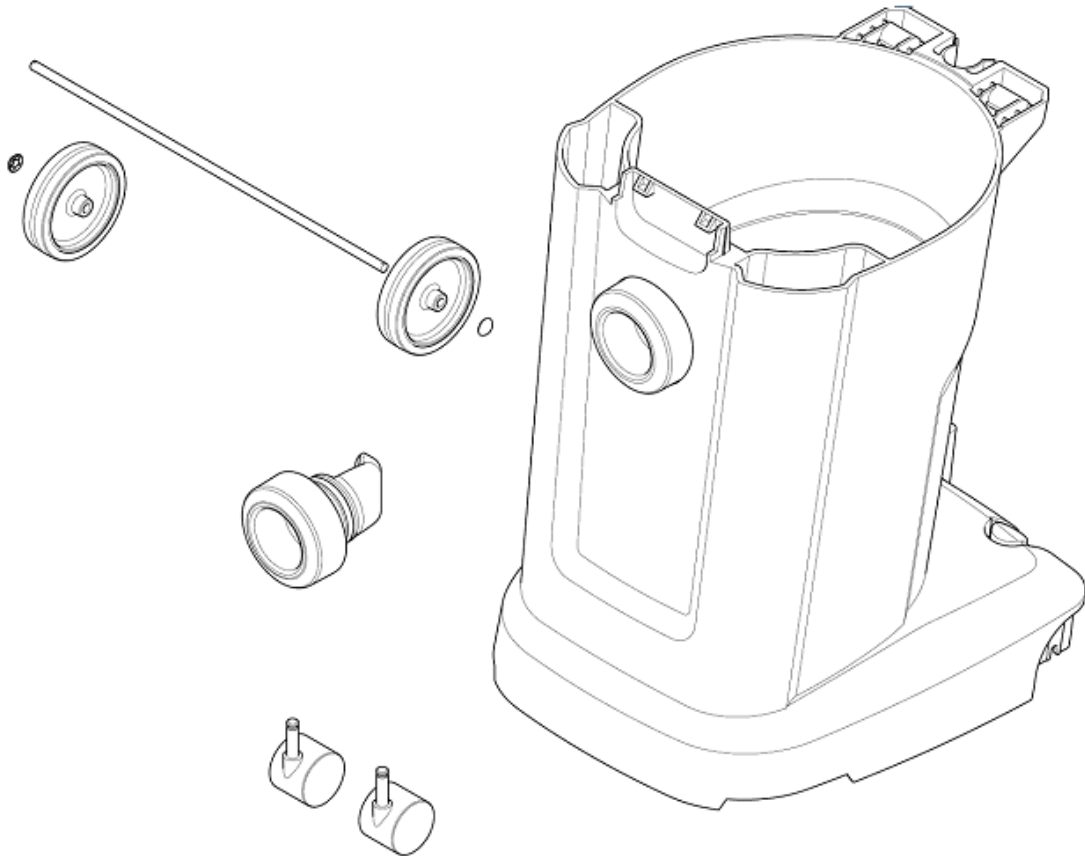
Art: 11.2

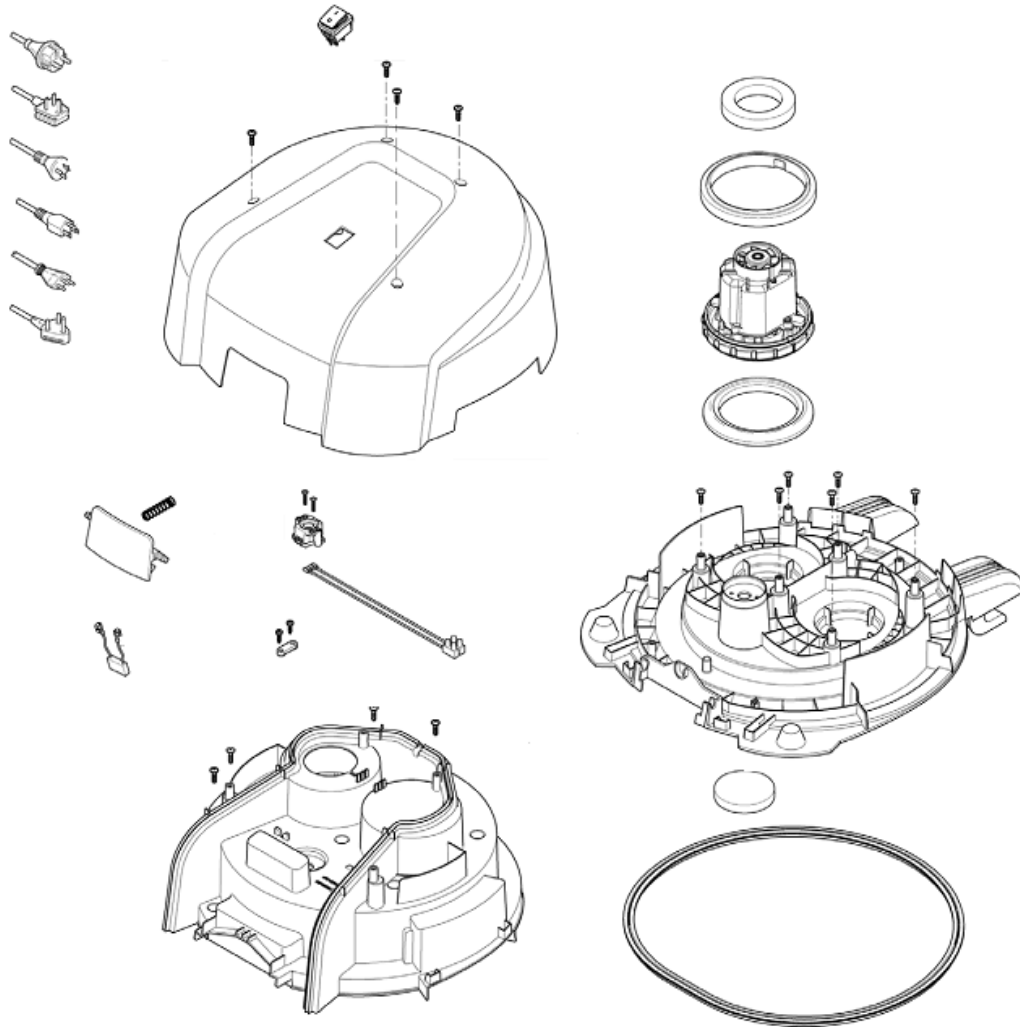
Art: 11.2 shows how the front- and rear wheels, axel, handle and the ERGO tilt function is fitted to the trolley.

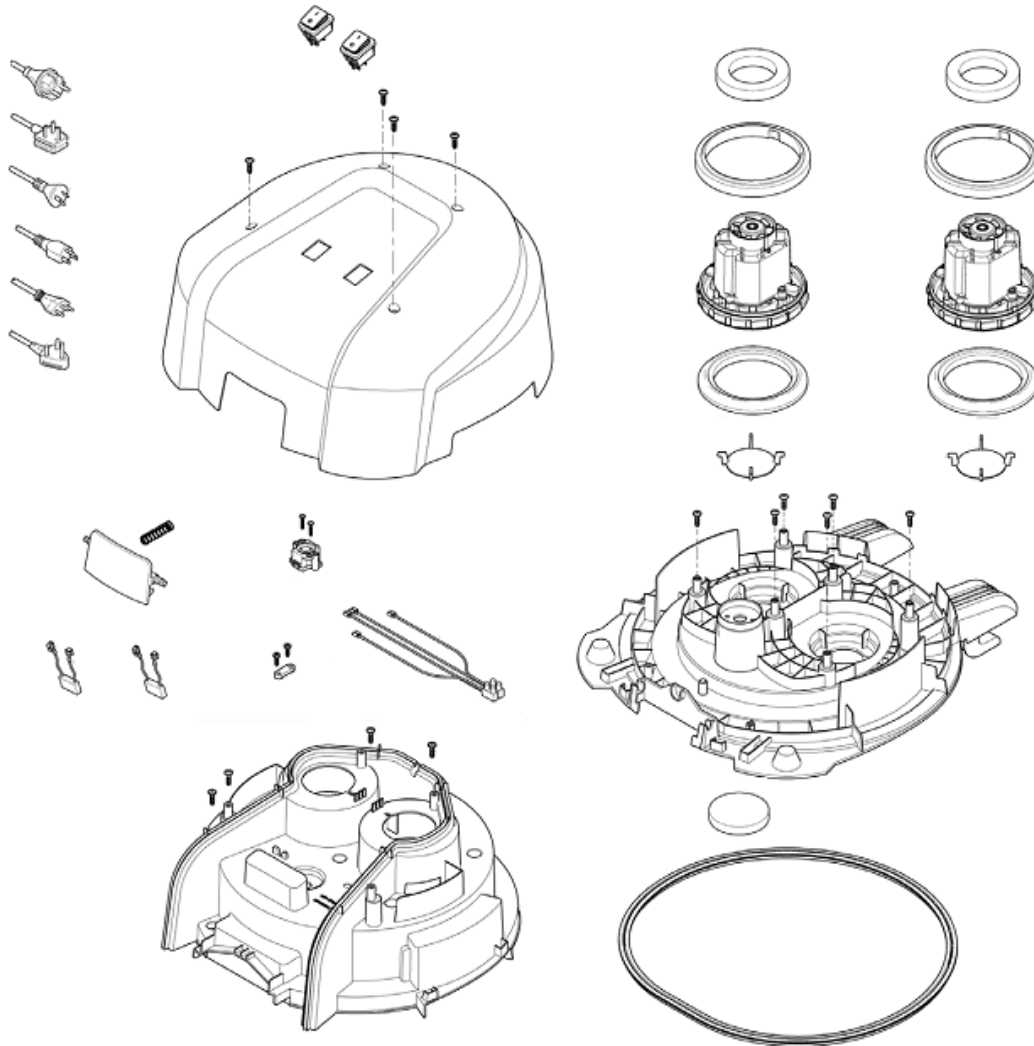
Please refer to the spare part list for part numbers.

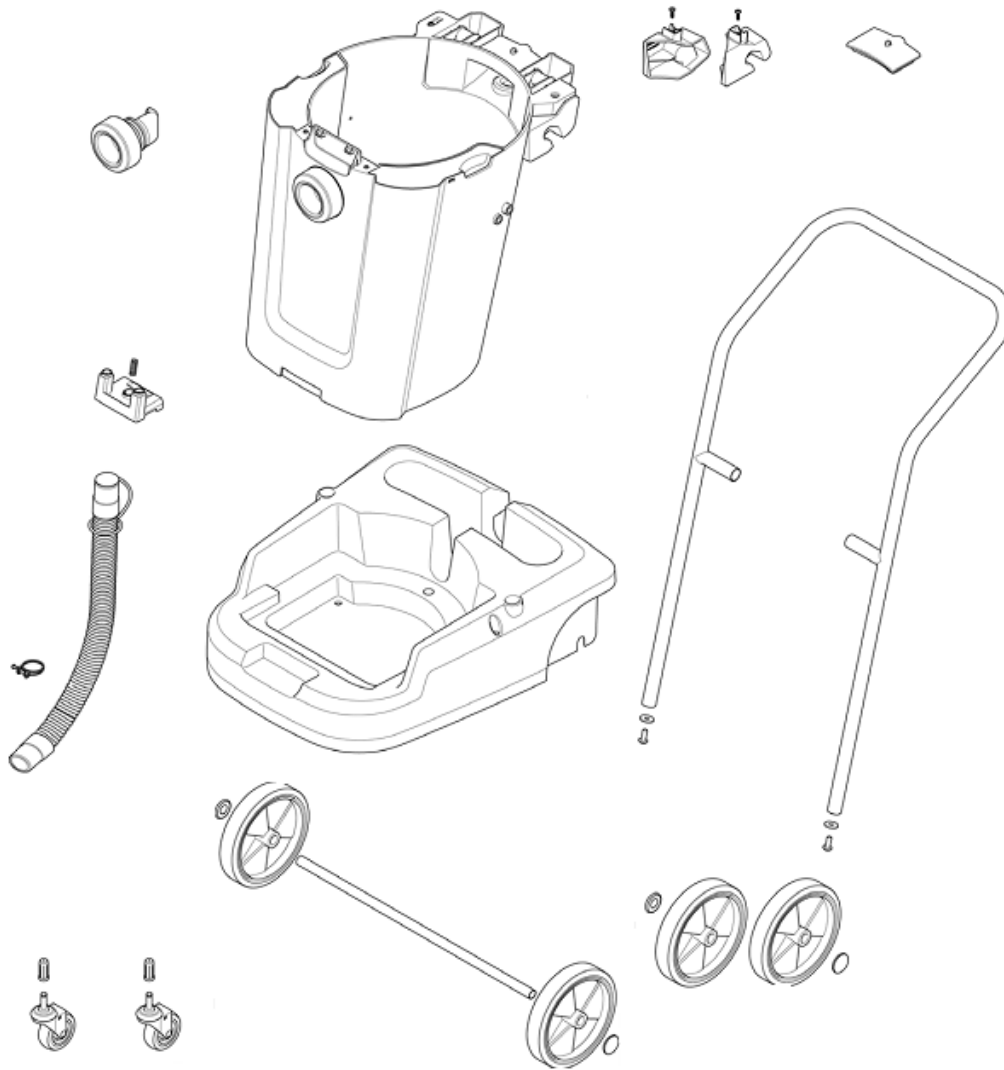
## VL500 - Top 35



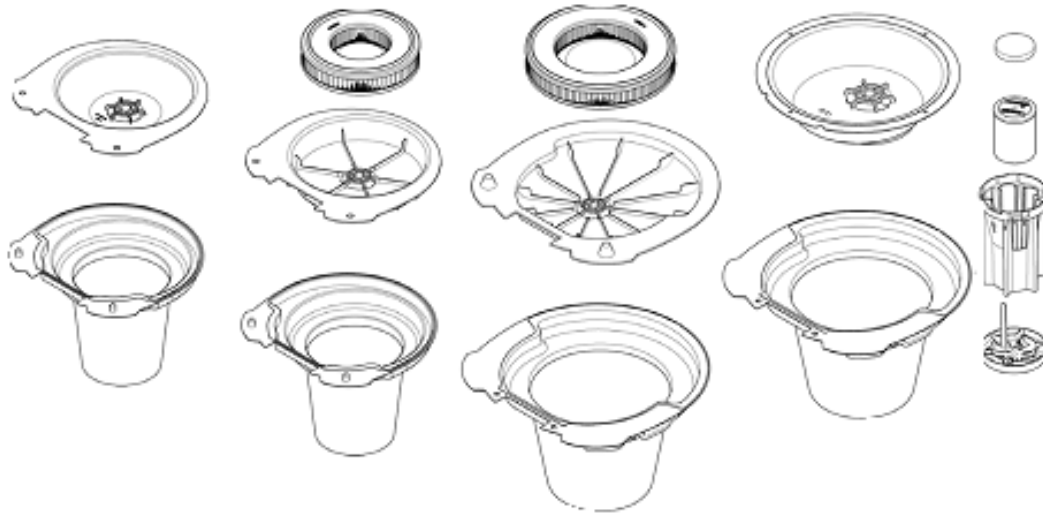
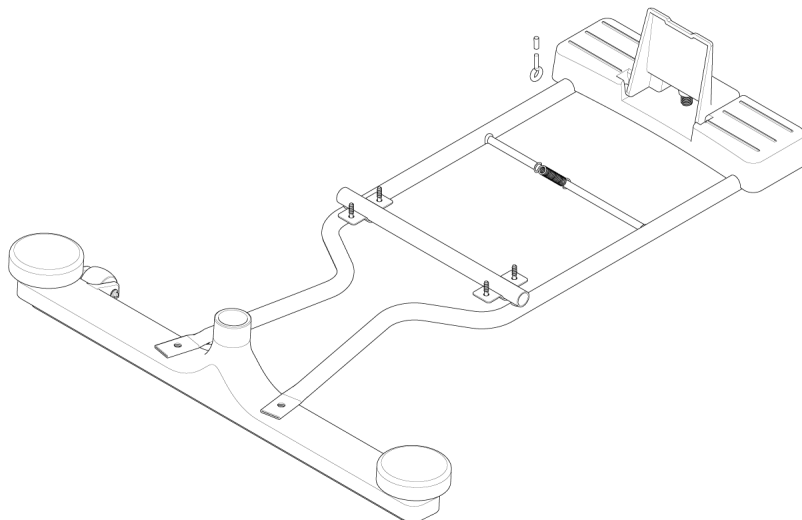
**VL500 - Container 35**

**VL500 - Top 55-1, 75-1**

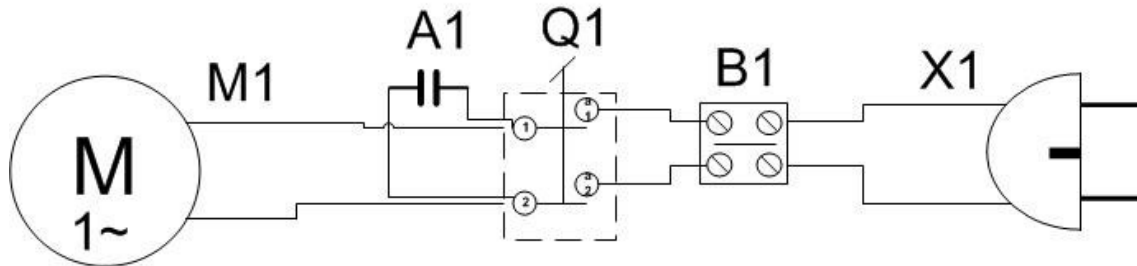
**VL500 - Top 55-2, 75-2**

**VL500 - Container 55, 75 BSF, BDF**



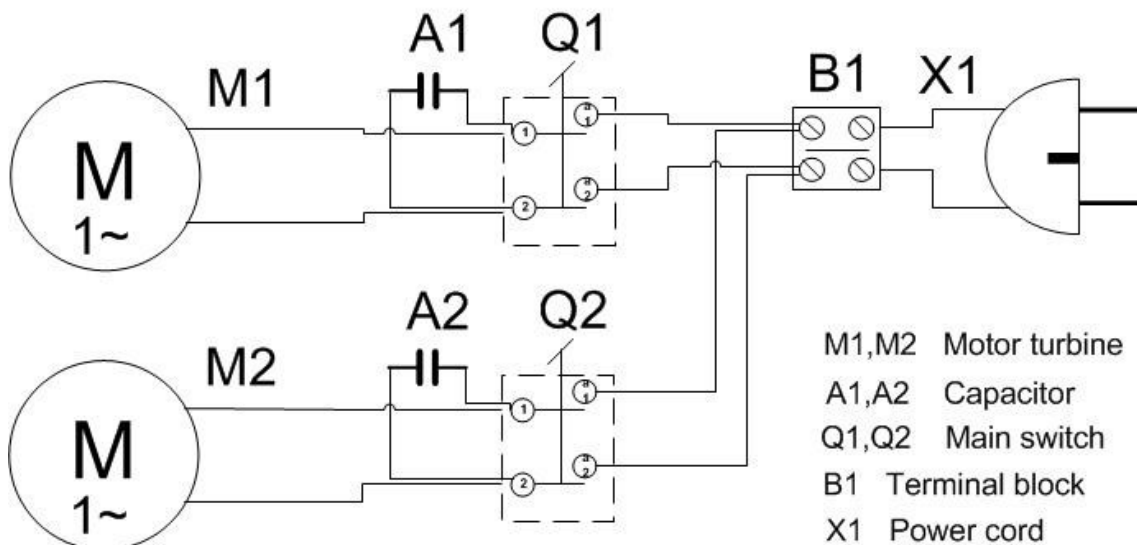
**VL500 - Filter and Bags****VL500 - Squeegee**

### Electrical diagram for 1 motor



- M1 Motor turbine
- A1 Capacitor
- Q1 Main switch
- B1 Terminal block
- X1 Power cord

### Electrical diagram for 2 motor



- M1,M2 Motor turbine
- A1,A2 Capacitor
- Q1,Q2 Main switch
- B1 Terminal block
- X1 Power cord

